



#### CONTACT INFORMATION

Mining Records Curator  
Arizona Geological Survey  
416 W. Congress St., Suite 100  
Tucson, Arizona 85701  
602-771-1601  
<http://www.azgs.az.gov>  
[inquiries@azgs.az.gov](mailto:inquiries@azgs.az.gov)

The following file is part of the Arimetco, Inc. Mining Collection

#### ACCESS STATEMENT

These digitized collections are accessible for purposes of education and research. We have indicated what we know about copyright and rights of privacy, publicity, or trademark. Due to the nature of archival collections, we are not always able to identify this information. We are eager to hear from any rights owners, so that we may obtain accurate information. Upon request, we will remove material from public view while we address a rights issue.

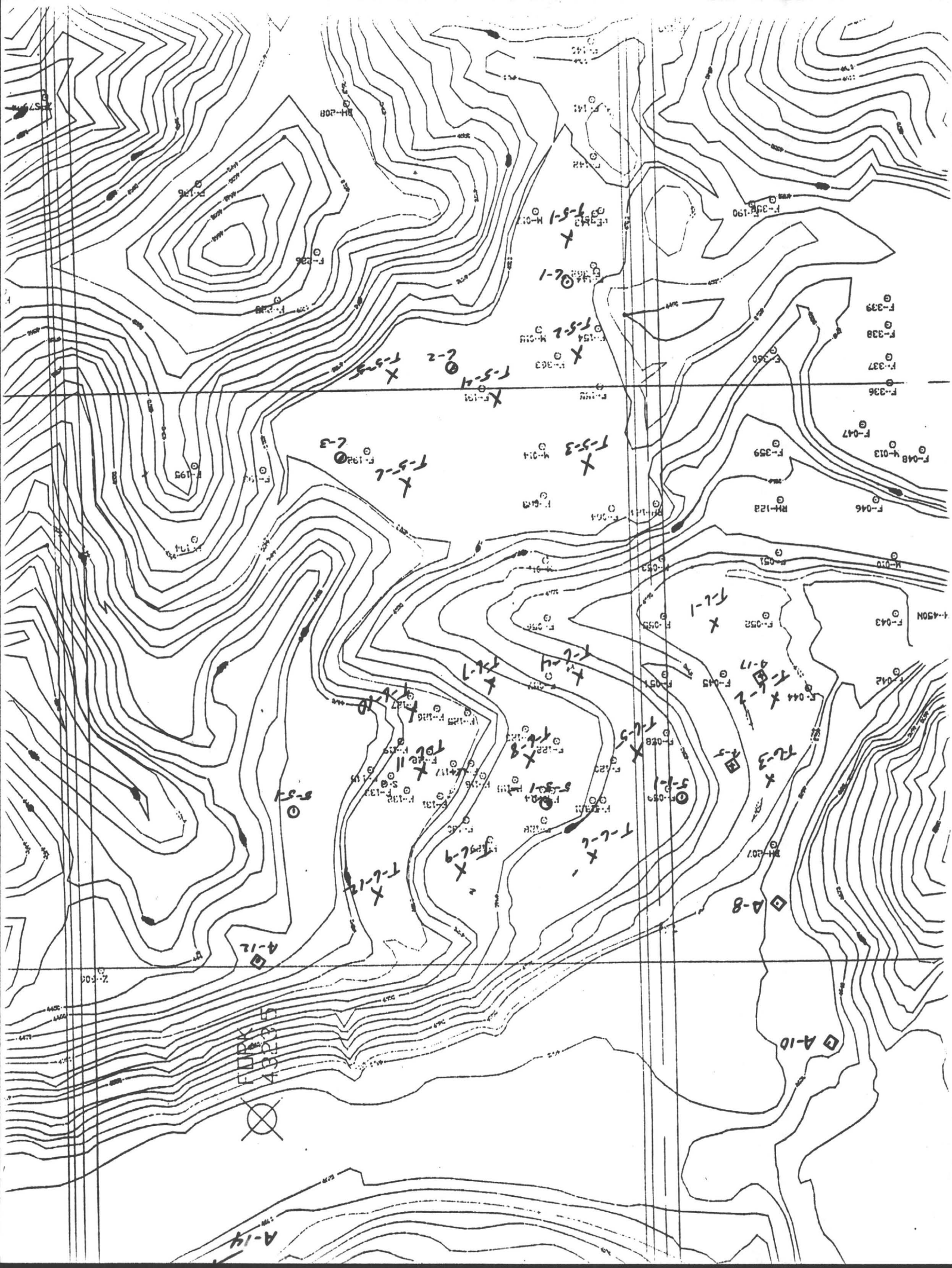
#### CONSTRAINTS STATEMENT

The Arizona Geological Survey does not claim to control all rights for all materials in its collection. These rights include, but are not limited to: copyright, privacy rights, and cultural protection rights. The User hereby assumes all responsibility for obtaining any rights to use the material in excess of "fair use."

The Survey makes no intellectual property claims to the products created by individual authors in the manuscript collections, except when the author deeded those rights to the Survey or when those authors were employed by the State of Arizona and created intellectual products as a function of their official duties. The Survey does maintain property rights to the physical and digital representations of the works.

#### QUALITY STATEMENT

The Arizona Geological Survey is not responsible for the accuracy of the records, information, or opinions that may be contained in the files. The Survey collects, catalogs, and archives data on mineral properties regardless of its views of the veracity or accuracy of those data.



1700

1600

1500

1400

1300

798

PUMP PAD 40

22"

25 9"

HEAP NO. 6

27 SPRINKLERS

4105

12.23"

8.56"

19.41"

4134

17.45"

NO. 4 TEE  
4166.7

NO. 3 TEE  
4187.5

NO. 2 TEE  
4200.0

HEA



1200

1100

1000

900

800

700

4200.0

512  
 O 140'  
 4198.6

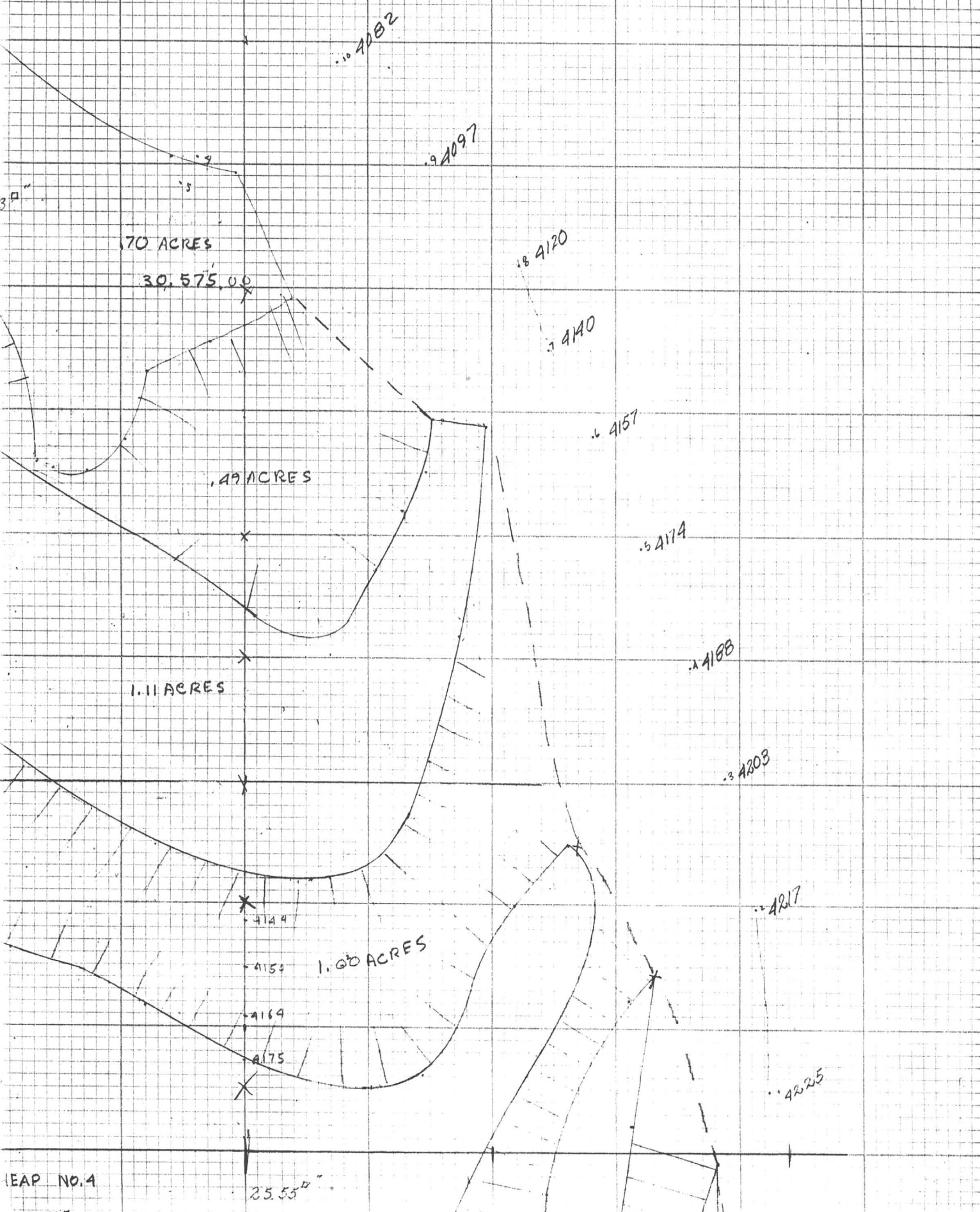
NO. 1 TEE  
 4255.6

SURFACE AREA - 10.55 ACRES OR 459,558 sq ft  
 TOTAL TONS ORE - 5,041,388  
 TOTAL TONS Cu CONTAINED - 10638.984  
 TOTAL LB Cu CONTAINED - 21,677,968  
 GRADE - 215 %

TOTAL = 10.55

LEACH BASIN No. 5

4050



LEAP NO. 4

4175

