



CONTACT INFORMATION
Mining Records Curator
Arizona Geological Survey
416 W. Congress St., Suite 100
Tucson, Arizona 85701
602-771-1601
<http://www.azgs.az.gov>
inquiries@azgs.az.gov

The following file is part of the Arimetco, Inc. Mining Collection

ACCESS STATEMENT

These digitized collections are accessible for purposes of education and research. We have indicated what we know about copyright and rights of privacy, publicity, or trademark. Due to the nature of archival collections, we are not always able to identify this information. We are eager to hear from any rights owners, so that we may obtain accurate information. Upon request, we will remove material from public view while we address a rights issue.

CONSTRAINTS STATEMENT

The Arizona Geological Survey does not claim to control all rights for all materials in its collection. These rights include, but are not limited to: copyright, privacy rights, and cultural protection rights. The User hereby assumes all responsibility for obtaining any rights to use the material in excess of "fair use."

The Survey makes no intellectual property claims to the products created by individual authors in the manuscript collections, except when the author deeded those rights to the Survey or when those authors were employed by the State of Arizona and created intellectual products as a function of their official duties. The Survey does maintain property rights to the physical and digital representations of the works.

QUALITY STATEMENT

The Arizona Geological Survey is not responsible for the accuracy of the records, information, or opinions that may be contained in the files. The Survey collects, catalogs, and archives data on mineral properties regardless of its views of the veracity or accuracy of those data.



ARIZONA DEPARTMENT OF ENVIRONMENTAL QUALITY

Fife Symington, Governor Edward Z. Fox, Director

March 12, 1993

PARTIAL COPY OF LETTER

Mr. Harrison Matson
Arimetco International Inc.
6245 East Broadway, Suite 350
Tucson, Arizona 85711

RE: NWP 26 - CONSTRUCTION OF TWO DAMS AND LEACHATE RECOVERY FACILITIES IN TWO UNNAMED TRIBUTARIES OF FRENCH GULCH AT THE ZONIA MINE, NEAR KIRKLAND JUNCTION, ARIZONA

Dear Mr. Matson:

The Arizona Department of Environmental Quality (ADEQ) staff has reviewed information pertaining to the referenced proposed activity for State Water Quality Certification pursuant to Sections 401 and 404 of the Federal Clean Water Act. Information listed in Section B were used as the basis for this action. Our technical review has determined that the construction and operation of the subject facilities will control two sources of surface water pollution at the Zonia Mine and have a beneficial impacts on the chemical, physical or biological integrity of French Gulch when the Conditions shown below in Section C are adhered to during construction and post construction operations.

A. PROJECT DESCRIPTION

The company, Arimetco International, Inc. proposes to conduct a partial remediation program at the Zonia Mine to eliminate the discharge of pollution to French Gulch. The proposed construction includes two dams and pumpback works to contain contaminated discharge from two of the three leach basin areas at the Zonia Mine. These dams are the only proposed remediation features that affect navigable waters of the United States. This water quality certification addresses the following:

1. Two process water collection dams will be constructed to receive discharge from existing leach basins. These are identified as Leach Basins No. 1 (formerly 1,2,3 and 4), No. 2 (formerly 5 and 6) and No. 3 (formerly 7,8 and 9)
 - a. One dam will capture the discharge to surface water from Leach Basin No. 1. This dam will be located on a tributary to French Gulch near the old Zonia processing plant.
 - b. The second dam will capture the discharge to surface water from Leach Basins No. 2 and receive the discharge from leachate recovery wells at Leach Basin No. 3 via a new pipeline. This dam will be constructed on another, upstream tributary to French Gulch.
2. Both dams will be lined on the upstream face in accordance with the ADEQ Aquifer Protection program approval.

3. The basins behind the dams will be lined in accordance with the ADEQ Aquifer Protection program approval.
4. Impounded water behind the two dams will not discharge to surface water and will be pumped to the leach basins through sprays for enhanced evaporation, or allowed to evaporate behind the dams.
5. The water storage capacity of the impoundment for the dam Leach Basin No. 1 is 3,198,995 gallons and the impoundment for the Leach Basin Nos. 2 and 3 dam is 7,214,340 gallons. Leach Basin No. 3 (the insitu basin with a depth of 200 feet) will have a pumping system to discharge a minimum of 150 gpm to the evaporation pond. The pumpback system at each of the two dams is designed to contain all runoff from a 5.5 inch precipitation event on a wet watershed and empty storage impoundments at the beginning of the event.

B. BASIS FOR CONDITIONAL STATE 401 WATER QUALITY CERTIFICATION

1. Arizona Water Quality Standards for Navigable Waters, A.A.C. R18-11, Article 1.
2. Arizona Water Quality Control Council Policy for Construction and Related Activities in Watercourses, Adopted April 13, 1977.
3. Final Report and Recommendations of the Governor's Riparian Habitat Task Force, Executive Order 89-16, dated October 1990.
4. Letter requesting State 401 Water Quality Certification for the referenced Nationwide 26 Permit, dated December 8, 1992, from Harrison Matson, Arimetco International, Inc. (AII) to James Matt, Arizona Department of Environmental Quality (ADEQ), received on December 10, 1992, including the following items:
 - a. A letter dated November 5, 1992 from Harrison Matson, to Enio Sabastiani of United States Environmental Protection Agency (EPA) explaining the AII remediation plan.
 - b. An aerial photograph of the Zonia Mine area (undated) measuring 36" X 36" with a scale of 1 inch = 200 feet.
5. A memo dated November 25, 1992 from Peter Hyde, ADEQ to Ron Frey, ADEQ recommending approval of the November 5, 1992 AII proposed remediation plan for surface water pollution control (Item B.4.a, above).
6. A Remediation Plan - Zonia Mine dated November 25, 1992 signed by Harrison Matson, Registered Geologist for Arimetco International, Inc.
7. A site inspection conducted January 12, 1993 with Harrison Matson, Peter Hyde and James Matt.
8. A memo dated January 19, 1993 from Ed Pond (ADEQ) to Ron Frey concerning an intent to issue a temporary Aquifer Protection Permit to Arimetco International, Inc.

ARIZONA DEPARTMENT OF WATER RESOURCES

15 South 15th Avenue, Phoenix, Arizona 85007

Telephone (602) 542-1581

Fax (602) 542-3383



FIFE SYMINGTON
Governor

RITA P. PEARSON
Director

February 10, 1994

Arimetco Inc.
Attn: Allen Wells
6245 East Broadway, Ste. 350
Tucson, Arizona 85711

Re: Permit to Appropriate Public Water Nos. 33-96293.0000, 33-96294.0000,
33-96295.0000

Dear Mr. Wells:

The Department of Water Resources is prepared to issue permits for the referenced applications.

Per Arizona Administrative Code Rule 12-15-152 a fee in the amount of \$50.00 is required for the preparation and issuance of each permit. Please remit your check to my attention in the amount of \$150.00 for the required fee payment. The permits will be forwarded to you upon completion.

If you have any questions, please call me at (602) 542-1581.

Yours truly,

A handwritten signature in cursive script that reads "Miros Gutierrez".

Miros Gutierrez
Surface Water Rights Specialist
Operations Division

MG:hs

February 24, 1994

Arizona Department of Water Resources
Attn: Miros Gutierrez
Surface Water Rights Specialist
Operations Division
15 South 15th Avenue
Phoenix, Arizona 85007

Dear Mr. Gutierrez:

A check in the amount of \$150.00 is enclosed to cover the fee for preparation and issuance of the three permits.

I would like to thank you for your help in the preparation of these permits.

Respectfully submitted,

Allen E. Wells
Engineer

December 10, 1993

Arizona Department of Water Resources
Attn: Mr. Miros Gutierrez
15 South 15th Avenue
Phoenix, Arizona 85007

Dear Mr. Gutierrez:

Please find enclosed three Affidavits of Posting Notices for application to appropriate public waters No's. 33-96293.0000, 33-96294.0000 and 33-96295.0000.

These notices have been posted in excess of thirty days as required by law. The specific locations can be ascertained from the notices.

If I can be of any further assistance please do not hesitate to contact me at (602) 721-1505.

Sincerely,



Allen Wells
Civil Engineer

AW:cra

Enclosures

gutierre.d10
94-213/ARX

WHILE YOU WERE OUT

TO

Allen W.

DATE

12/13

TIME

12:55

FROM

Joe

AREA CODE

NUMBER

OF

scm

EXTENSION

Post Office is Kirkland

MESSAGE

SIGNED

Margie

URGENT!

RETURNED CALL

CALL BACK

WILL CALL AGAIN

PHONED

WANTS TO SEE YOU

WAS IN

AMPAD NO. 23-176-400 SETS

NO. 23-376-200 SETS

Dear Mr. Gutieerez:

In response to your letter dated August 31, 1993 I have included a copy of a letter addressed to Mr. Harison Matson concerning permits to appropriate public waters. Joe B. Stuart, manager surface water rights section of the ADWR, states "that the Arizona Public Water Code provides that any impoundment and retention of surface water runoff will require authoriztion from the Arizona Department of Water Resources prior to the construction of the dams."

Runoff, occuring as sheetflow (horton overland flow), collecting from areas within and around the mine site report to leach basins. There are no discernable channels leading up to the basins. However these basins are a the head of unnamed tributaries of the French Gulch. To prevent discharges of potential contamination into the tributary these dams are located at the toe of their respective basins. It is Arimetco's intention to build "Zero-Discharge" facilities.

Therefore please review the enclosed applications again. If you have questions please do not hesitate to contact me.



August 25, 1993

Arizona Department of Water Resources
Operations Division
Attn: Miros Gutierrez
Surface Water Rights Specialist
15 South 15th Avenue
Phoenix, Arizona 85007

Re: Applications for Permit to Appropriate Public Water

Dear Mr. Gutierrez:

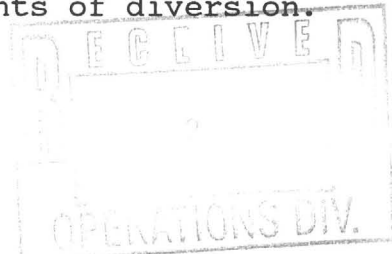
Enclosed please find three resubmitted Applications for Permit to Appropriate Public Water along with a check in the amount of 75 dollars, dated August 12, 1993.

In response to your letter dated August 17, 1993 the applications are being resubmitted taking into account the clarifications you requested. Additional maps have been attached to show location, land ownership, and construction.

The following are responses to the concerns you stated.

- "1. Item 2 of each application: You have indicated the sources of water to be 'Leach pad runoff'. The exact sources of water are not clear. Please clarify the specific type of channel name the runoff flows into, such as; a wash, creek, stream, canyon, ect."

The exact source of water is the same for all three applications. There are no stream channels leading to the dam sites since the dams are located at the base of their respective leach basins. The water that will be collected comes from Horton overland flow and runoff from the aforementioned basins. Since there are no washes, creeks, streams, or canyons leading up to the site no actual containment of perenial flowing water is encountered. Also note that these points of diversion have existed in the past. The leach basins themselves contain interior dams that collect water. The dams that a being permitted are enhancements to these current methods of containment and are not "new" points of diversion.





ARIMETCO
INTERNATIONAL INC.

"2. The maps you provided are inadequate. Enclosed are copies of U.S.G.S. topographic maps which include the places of use where your applications are located. Please clearly mark and label the location of the point of diversion and place of use on each map for each application and return the maps to us for inclusion in your files."

The exact location of the points of diversion and place of use can be seen from the attached maps. Both the point of diversion and place of use are the same. Along with the enlarged U.S.G.S. topographic map originally submitted there is the map you requested be included.

"The locations listed on the three applications appear to be located on land held by the Bureau of Land Management (BLM). Please submit a letter of authorization from the Bureau of Land Management allowing appropriation and use of water on the BLM land. The application will not be accepted by the Department of Water Resources unless accompanied by the letter of authorization or proof of land ownership."

The land that the dams are located on is owned by The Zonia Company. The Zonia Company hold patented and unpatented mining claims throughout the area. Enclosed you will find a master title plat from the Bureau of Land Management (BLM) showing the mineral surveys conducted in the area. Along with this is a map showing an overlay of the mining claims held by The Zonia Company. These maps show without a doubt that the dams are on The Zonia Company land and not on BLM land.

The enclosed Memorandum of Mining Lease Agreement gives a list of the claims afforded to Arimetco Inc. This agreement also gives Arimetco Inc. the right "to place thereon, construct, maintain, use and, at its election, to remove such structures, facilities, equipment, roadways, haulage ways and such other improvements as ARIMETCO may deem necessary...".

I would like to thank you in advance for the help and attention you have given this process and if you have any further questions or concerns please do not hesitate to contact me at (602) 745-8882.

Respectfully submitted,

Allen E. Wells
Engineer

2
OPERATIONS DIV.

ARIZONA DEPARTMENT OF WATER RESOURCES

15 South 15th Avenue, Phoenix, Arizona 85007

Telephone (602) 542-1553

Fax (602) 256-0506



FIFE SYMINGTON
Governor

RITA P. PEARSON
Director

March 30, 1993

Mr. Harrison Matson
Arimetco International Inc.
6245 East Broadway, Suite 350
Tucson, Arizona 85711

Re: Proposed impoundments, French Gulch, Kirkland Junction

Dear Mr. Matson:

I have received a copy of a letter addressed to you from the Arizona Department of Environmental Quality regarding two proposed dams to be located on two unnamed tributaries of French Gulch, located near Kirkland Junction. The project is described as a remediation program at the Zonia Mine to eliminate the discharge of pollution to French Gulch. By the description contained in the letter, it appears that these two structure would also impound any surface water runoff from the contributing watershed area.

Please be advised that the Arizona Public Water Code provides that any impoundment and retention of surface water runoff will require authorization from the Arizona Department of Water Resources prior to the construction of the dams. This authorization can be gained through the filing of an application with the Department and the issuance of a permit.

Similar situations have occurred with other mining companies in Arizona, where they had to gain authorization from the Department for the impoundment of surface water resulting from the construction of these "zero-discharge" facilities.

Please review your project regarding the impoundment of any surface water runoff. Please contact me if you need any further information or assistance.

Yours truly,

Joe B. Stuart
Manager, Surface Water Rights Section
Operations Division
Tel. (602) 542-1581

JBS:hs

September 1, 1993

Mr. Miros Gutierrez
Arizona Department of Water Resources
15 South 15th Avenue
Phoenix, Arizona 85007

Dear Mr. Gutierrez:

In response to your letter dated August 31, 1993 I have included a copy of a letter addressed to Mr. Harrison Matson concerning permits to appropriate public waters. Joe B. Stuart, Manager, Surface Water Rights Section of the ADWR, states "that the Arizona Public Water code provides that any impoundment and retention of surface water runoff will require authorization from the Arizona Department of Water Resources prior to the construction of the dams."

Runoff, occurring as sheetflow (Horton overland flow), collecting from areas within and around the mine site report to leach basins. There are no discernable channels leading up to the basins. However, these basins are at the head of unnamed tributaries of the French Gulch. To prevent discharges of potential contamination into the tributary these dams are located at the toe of their respective basins. It is Arimetco's intention to build "Zero-Discharge" facilities.

Therefore, please review the enclosed applications again. If you have questions please do not hesitate to contact me.

Sincerely,



Allen Wells
Engineer

AW:lp

Enclosed

Permit to appropriate surface water

ARIZONA DEPARTMENT OF WATER RESOURCES

15 South 15th Avenue, Phoenix, Arizona 85007
Telephone (602) 542-1553
Fax (602) 256-0506



FIFE SYMINGTON
Governor

RITA P. PEARSON
Director

March 30, 1993

Mr. Harrison Matson
Arimetco International Inc.
6245 East Broadway, Suite 350
Tucson, Arizona 85711

Re: Proposed impoundments, French Gulch, Kirkland Junction

Dear Mr. Matson:

I have received a copy of a letter addressed to you from the Arizona Department of Environmental Quality regarding two proposed dams to be located on two unnamed tributaries of French Gulch, located near Kirkland Junction. The project is described as a remediation program at the Zonia Mine to eliminate the discharge of pollution to French Gulch. By the description contained in the letter, it appears that these two structure would also impound any surface water runoff from the contributing watershed area.

Please be advised that the Arizona Public Water Code provides that any impoundment and retention of surface water runoff will require authorization from the Arizona Department of Water Resources prior to the construction of the dams. This authorization can be gained through the filing of an application with the Department and the issuance of a permit.

Similar situations have occurred with other mining companies in Arizona, where they had to gain authorization from the Department for the impoundment of surface water resulting from the construction of these "zero-discharge" facilities.

Please review your project regarding the impoundment of any surface water runoff. Please contact me if you need any further information or assistance.

Yours truly,

Joe B. Stuart
Manager, Surface Water Rights Section
Operations Division
Tel. (602) 542-1581

JBS:hs

ARIZONA DEPARTMENT OF WATER RESOURCES

15 South 15th Avenue, Phoenix, Arizona 85007
Telephone (602) 542-1581
Fax (602) 542-3383



FIFE SYMINGTON
Governor

RITA P. PEARSON
Director

August 31, 1993

Arimetco International, Inc.
Attn: Allen E. Wells
6245 East Broadway, Ste. 350
Tucson, Arizona 85711

Re: Three Applications for Permit to Appropriate Public Water

Dear Mr. Wells:

Your response to our letter dated August 17, 1993, stated "The exact source of water is the same for all three applications. There are no stream channels leading to the dam sites since the dams are located at the base of their respective leach basins. The water that will be collected comes from Horton overland flow and runoff from the aforementioned basins. Since there are no washes, creeks, streams, or canyons leading up to the site no actual containment of perennial flowing water is encountered". If these statements are correct then none of the water would be considered appropriable.

The water you are using appears to be sheetflow and you would not need to file applications for permit to appropriate public water. Enclosed are your three applications for permit to appropriate public water and your check no. 19017 dated August 12, 1993, in the amount of \$75.00.

However, if any of this water would flow into a natural channel, such as a wash or stream; then it would become subject to appropriation and applications would be required.

If you require further assistance, please call me at (602) 542-1581.

Yours truly,

Miros Gutierrez
Surface Water Rights Specialist
Operations Division

MG:hs
Enclosures

September 1, 1993

Mr. Miros Gutierrez
Arizona Department of Water Resources
15 South 15th Avenue
Phoenix, Arizona 85007

Dear Mr. Gutierrez:

In response to your letter dated August 31, 1993 I have included a copy of a letter addressed to Mr. Harrison Matson concerning permits to appropriate public waters. Joe B. Stuart, Manager, Surface Water Rights Section of the ADWR, states "that the Arizona Public Water code provides that any impoundment and retention of surface water runoff will require authorization from the Arizona Department of Water Resources prior to the construction of the dams."

Runoff, occurring as sheetflow (Horton overland flow), collecting from areas within and around the mine site report to leach basins. There are no discernable channels leading up to the basins. However, these basins are at the head of unnamed tributaries of the French Gulch. To prevent discharges of potential contamination into the tributary these dams are located at the toe of their respective basins. It is Arimetco's intention to build "Zero-Discharge" facilities.

Therefore, please review the enclosed applications again. If you have questions please do not hesitate to contact me.

Sincerely,



Alan Wells
Engineer

AW:lp

Enclosed

Dear Mr. Gutieerez:

In response to your letter dated August 31, 1993 I have included a copy of a letter addressed to Mr. Harison Matson concerning permits to appropriate public waters. Joe B. Stuart, manager surface water rights section of the ADWR, states "that the Arizona Public Water Code provides that any impoundment and retention of surface water runoff will require authoriztion from the Arizona Department of Water Resources prior to the construction of the dams."

Runoff, occuring as sheetflow (Horton overland flow), collecting from areas within and around the mine site report to leach basins. There are no discernable channels leading up to the basins. However these basins are at the head of unnamed tributaries of the French Gulch. To prevent discharges of potential contamination into the tributary these dams are located at the toe of their respective basins. It is Arimetco's intention to build "Zero-Discharge" facilities.

Therefore please review the enclosed applications again. If you have questions please do not hesitate to contact me.

DAM PERMITTING:

~~LEACH BASIN # 3 SECONDARY CONTAINMENT DAM~~

- ~~AMOUNT OF PROPOSED BENEFICIAL WATER USE~~
- ~~LOCATION OF PROPOSED POINT OF DIVERSION~~
- ~~HOW IS WATER TO BE DEVELOPED / PUT TO USE~~
- ~~MAXIMUM STORAGE~~
- ~~DAM HEIGHT~~
- ~~CAPACITY FOR EACH FOOT OF DEPTH.~~
- ~~CONSTRUCTION TIME TABLE~~

Final
WRITE-UP!

8/11/93

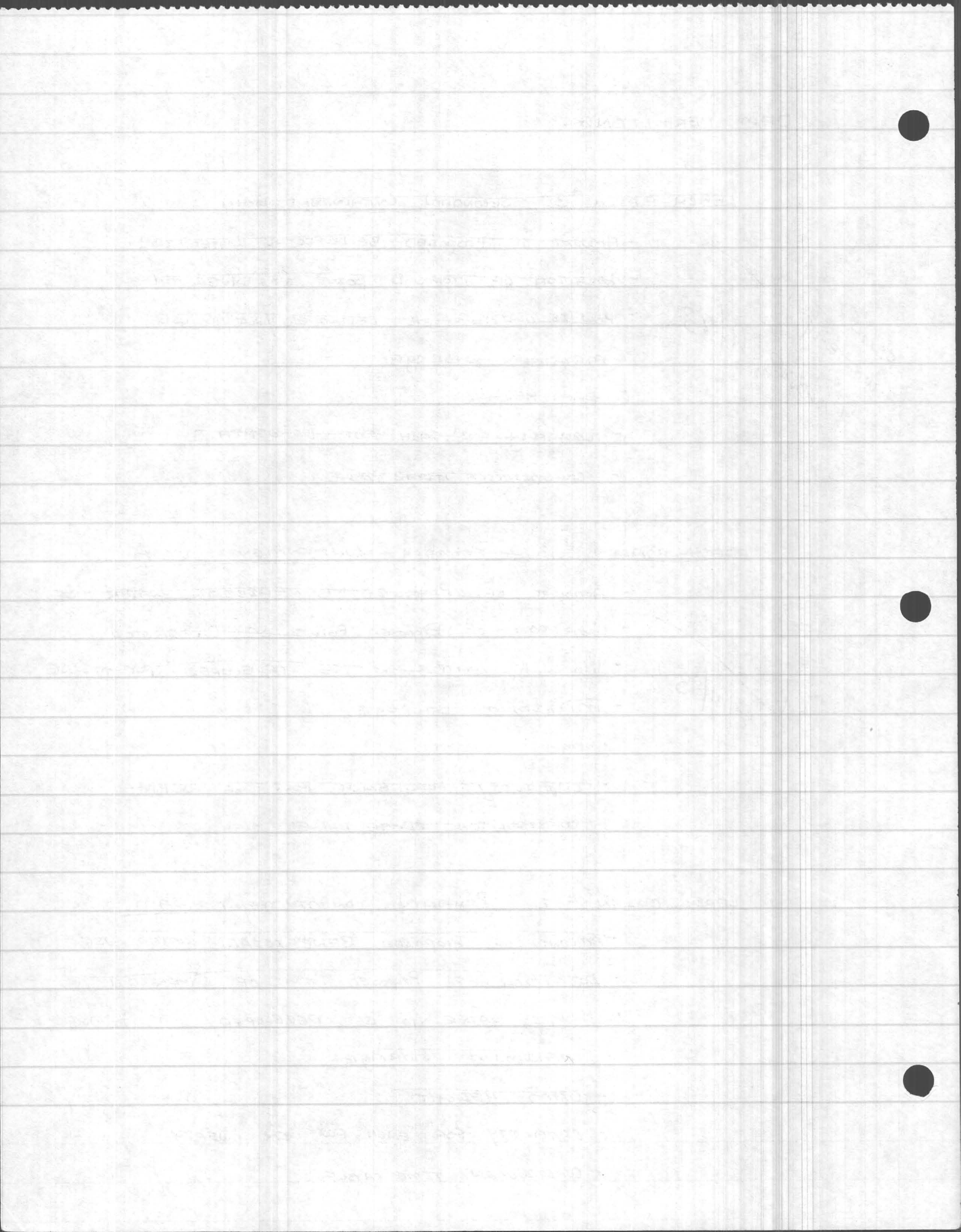
~~LEACH BASIN # 3 Primary CONTAINMENT DAM~~

- ~~AMOUNT OF PROPOSED BENEFICIAL WATER USE~~
- ~~LOCATION OF PROPOSED POINT OF DIVERSION~~
- ~~HOW IS WATER TO BE DEVELOPED / PUT TO USE~~
- ~~MAXIMUM STORAGE~~
- ~~DAM HEIGHT~~
- ~~CAPACITY FOR EACH FOOT OF DEPTH~~
- ~~CONSTRUCTION TIME TABLE~~

8/11/93

~~LEACH BASIN # 1 Primary CONTAINMENT DAM~~

- ~~AMOUNT OF PROPOSED BENEFICIAL WATER USE~~
- ~~LOCATION OF PROPOSED POINT OF DIVERSION~~
- ~~HOW IS WATER TO BE DEVELOPED / PUT TO USE~~
- ~~MAXIMUM STORAGE~~
- ~~DAM HEIGHT~~
- ~~CAPACITY FOR EACH FOOT IN DEPTH~~
- ~~CONSTRUCTION TIME TABLE.~~



ANNUAL PRECIPITATION: ZONIA MINE

* GENERALIZED *
* ESTIMATED *

STATION: WALNUT GROVE, ARIZONA

ANNUAL PRECIPITATION (INCHES): 17.49 (Thru Aug 1984)

8" ϕ rain-gage

TOTAL RAIN FALL ON:

* LEACH BASIN # 1: AREA = $982800 \text{ ft}^2 \left(\frac{144 \text{ in}^2}{1 \text{ ft}^2} \right) = 141523200 \text{ in}^2$
C = 0.95

TOTAL VOLUME OF WATER: 2,475,240,768 $\text{in}^3 \left(\frac{15 \text{ ft}^3}{1728 \text{ in}^3} \right)$
1,432,431 $\text{ft}^3 \left(\frac{7.48 \text{ gal}}{1 \text{ ft}^3} \right)$
1,071,4584 gal

WATER ABSORBED BY ground: $\approx 535729.2 \text{ gal}$

RUNOFF : $\approx 10,178,854.8 \text{ gal}$
 $\approx 10.2 \text{ million gallons.}$

* LEACH BASIN # 2,3: AREA = $2,216,400 \text{ ft}^2 \left(\frac{144}{1728} \right) = 319161600 \text{ in}^2$
C = 0.95

TOTAL VOLUME OF WATER: 5,582,136,384 $\text{in}^3 \left(\frac{1}{1728} \right)$
3,230,403 $\text{ft}^3 \left(\frac{7.48 \text{ gal}}{1 \text{ ft}^3} \right)$
24,163,414.44 gal

WATER ABSORBED BY ground: $\approx 1,208,170.722 \text{ gal}$

RUNOFF : $\approx 22,955,243.72 \text{ gal}$
 $\approx 23 \text{ million gallons}$

ANNUAL BENEFICIAL WATER USE:

<u>LOCATION</u>	<u>USE</u>	<u>AMT / MEASURE</u>	<u>SPECIFIC MONTHS</u>
LB # 1	SURFACE WATER RUNOFF CATCHMENT	10.2 million gal/yr	YEAR ROUND
LB # 2,3	"	23 million gal/yr	"

LOCATION MAP

A SERIES HOLES



BOUNDARY LINE FOR ENCLOSED
DRAWING WHICH IS AN
ENLARGEMENT OF USGS
TOPOGRAPHIC MAP FOR WALNUT
GROVE AND PEEPLE VALLEY

ARIZONA STATE OFFICE
BU. LAND MANAGEMENT

JUN 17 1981

7:45 A.M.
PHOENIX, ARIZONA

SHADED AREA INDICATES
LOCATION OF GEOCHEMICAL
AND GEOPHYSICAL SURVEYS

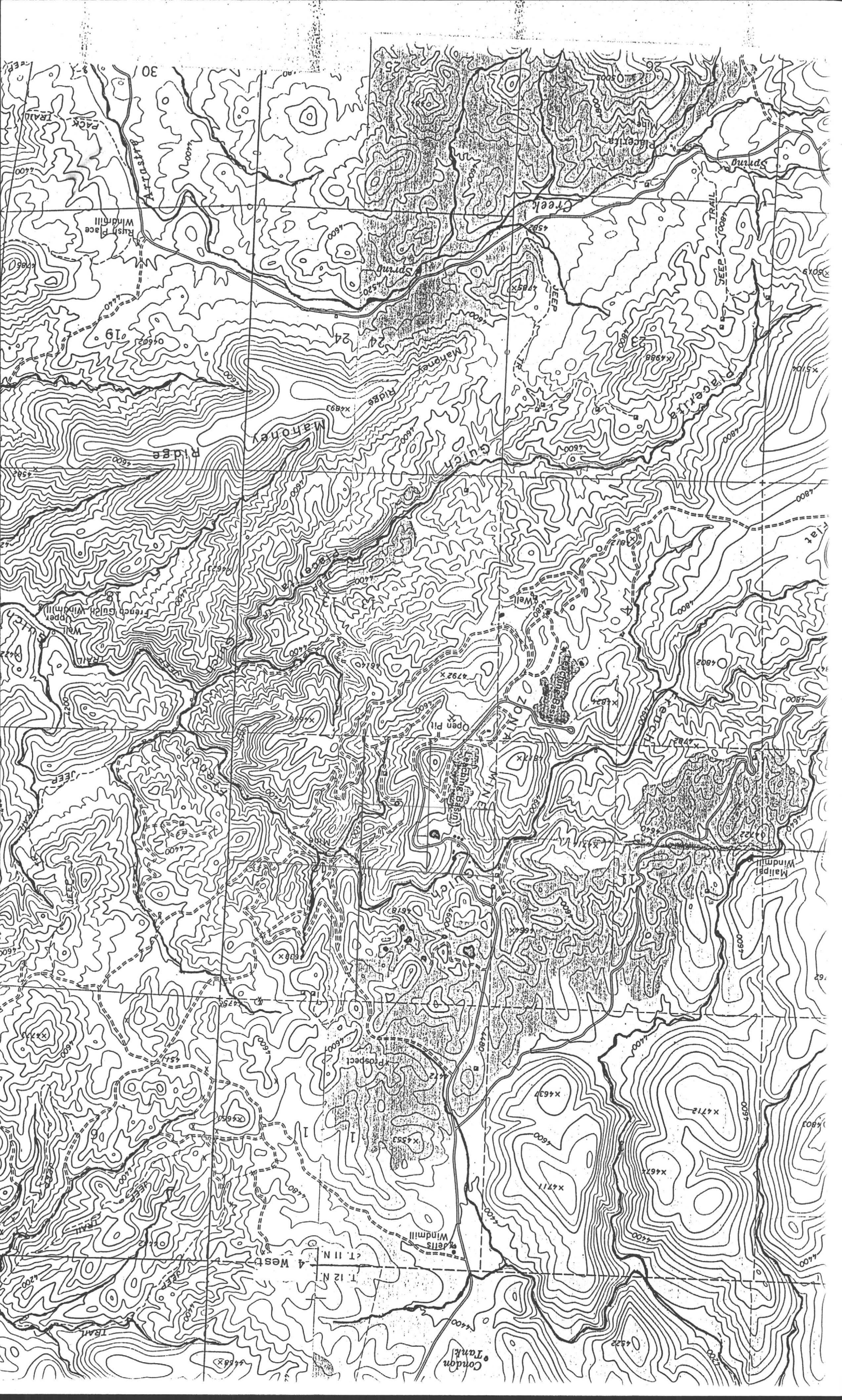
ZONIA
PATENTED CLAIMS

ZONIA, et al CLAIM GROUPS
and
COPPER CROWN CLAIM GROUP
Yavapai County, Arizona

PROPERTY MAP
Showing location of Geochemical
and
Geophysical Surveys

At the expense of:
~~AMERICAN SELCO, INC.~~
during the
1980-1981 assessment year

SCALE: 1" = 2000'



A-16 - 4 1/2" ID

A-14 - 4 1/2" OD PVC

John Peterson

Letter for drill completion - we are still working on it.

A-16 -> Exploration -> monitor
Application for a monitor
A-14
4/8/93 PVC well casing.

ARIZONA DEPARTMENT OF WATER RESOURCES

15 South 15th Avenue, Phoenix, Arizona 85007
Telephone (602) 542-1581
Fax (602) 542-3383



FIFE SYMINGTON
Governor

RITA P. PEARSON
Director

August 17, 1993

ARIMETCO International Inc.
Attn: Allen Edwards Wells
6245 East Broadway, Ste. 350
Tucson, Arizona 85711

Re: Three Applications for Permit to Appropriate Public Water

Dear Mr. Wells:

Enclosed please find the Applications for Permit to Appropriate Public Water you recently submitted to the Department and your check number 19017, dated August 12, 1993.

The locations listed on the three applications appear to be located on land held by the Bureau of Land Management (BLM). Please submit a letter of authorization from the Bureau of Land Management allowing appropriation and use of water on the BLM land. The application will not be accepted by the Department of Water Resources unless accompanied by the letter of authorization or proof of land ownership.

Please clarify the following items when resubmitting your applications:

1. Item 2 of each application: You have indicated the sources of water to be "Leach pad runoff". The exact sources of water are not clear. Please clarify the specific type of channel name the runoff flows into, such as; a wash, creek, stream, canyon, etc.
2. The maps you provided are inadequate. Enclosed are copies of U.S.G.S. topographic maps which include the places of use where your applications are located. Please clearly mark and label the location of the point of diversion and place of use on each map for each application and return the maps to us for inclusion in your files.

If you have any questions concerning these matters, please call me at (602) 542-1581.

Yours truly,

Miros Gutierrez
Surface Water Rights Specialist
Operations Division

MG:hs
Enclosures

Zonia Dam Data

T11N/R4W

Designation	Location	Latitude Longitude	Height (ft.)	Maximum Storage (gal)	Discharge to (gpm)	Liner Type	Use	Status
Southwest Holding Pond	14ac	N 34 17'48" W 112 38'00"		>100 mil	400	Not Available	temporary storage during emergency conditions abng with storing affected groundwater pumped from te in-situLB	Existing
South Runoff Pond	14ad	N 34 17'45" W 112 38'07"		?	N/A	Unlined	Collection of runoff from southern portion of the Zonia open pit. Only natural unaffected runoff with be collected	Existing
Barren Solution Pond		N 34 18'28" W 112 37'55"		4 mil	1500 to LB#1 3000 to LB#3	60 mil VLDPE over clay	Solution to be redistributed to leach basins #1 and #3	Existing
✓ LB#3 Primary Dam ✓	14aa	N 34 18'08" W 112 38'21"		1.3 mil	3000	60 mil VLDPE	Catch surface runoff and leach solution discharge and evaporate it abng with being a PLS plant feed pond.	Proposed
✓ LB#3 Secondary Dam ✓	11dd	N 34 18'12" W 112 38'22"	42	3.8 mil	Depending upon cap. of LB#3 Prim.	clay & polycrylamide	Backup containment for LB#3 Containment Pond.	Proposed
✓ LB#1 Primary Dam ✓	12cb	N 34 18'27" W 112 38'00"		1.3 mil	1500	Clay @ 60 mil VLDPE	Control discharge from LB# 1	Proposed
LB#1 Secondary Dam		N 34 18'34" W 112 38'00"		1.3 mil	Depending upon cap. of LB#1 Prim.	60 mil VLDPE over 40 mil VLDPE	Leach recovery system between liners / serve as a raffinate staging pond / transfer solution to existing raffinate or barren solution pond	Proposed

5. Give the legal land description of the location of the proposed point of diversion from the source. Provide the 1/4, 1/4 of the Section, and the Township and Range.
6. Give the legal land description of the location(s) of the proposed place(s) of use of the water. Provide the 1/4, 1/4 subdivision of the Section, and the Township and Range. Provide a copy of deed or legal document showing land ownership, or letter of authorization from the landowner.
7. Describe how the water source is to be developed, the water conveyed, and the water put to the proposed beneficial use.
8. Describe any proposed reservoirs that would be used to store the appropriated water. Metal or masonry storage tanks should also be described within the context of the proposed project as a whole.
9. Give an estimate of how many months or years before the proposed project is started, an estimate of how many months or years will be required to complete the project, and an estimate as to when the appropriated water will be put to the stated beneficial use. If the appropriation of water has already occurred and the project is already completed, give the date of completion and when the water was put to the stated beneficial use.
10. If the proposed point of diversion and/or place(s) of use is(are) located on lands leased from either a State or Federal agency, provide the name of the agency. Give the lease or allotment number or name. Answer the question as to legal access and explain, if applicable.
11. Identify supplemental water sources and describe the method of supplementing the proposed appropriation as required.
12. The comments section is provided to continue any previous sections or explain as required..
13. Attach an examination fee payment of \$25.00. Make checks payable to the Arizona Department of Water Resources.
14. Attach a map that clearly shows the proposed point of diversion, any conveyance features, and the proposed place(s) of use. The locations marked and labeled on the map **must** agree with the description provided on the application. The map must show Sections, Township and Range. The map should be a United States Geological Survey topographic quadrangle map, 7 1/2-minute series, or copy thereof.
15. The applicant, or a representative of the applicant, must sign and date the application form. The application **must** be signed and the examination fee paid to be accepted by the Department of Water Resources.

The statement at the bottom of the form concerning proposed appropriation of public water on lands belonging to the State or to the Federal government relates to the eventual issuance of any permit or certificate. The Department holds that appropriable water rights are appurtenant to the land, and therefore are held by the landowner. If the proposed appropriation is located on lands administered by the Bureau of Land Management or the National Forest Service, a letter from the specific agency authorizing the proposed appropriation must be submitted with the application. ¹

INSTRUCTIONS TO ASSIST IN PREPARING AN APPLICATION FOR A PERMIT TO APPROPRIATE PUBLIC WATERS OF THE STATE OF ARIZONA

The following instructions are referenced by number to questions on the application form. The application to acquire a permit to appropriate public water relates only to public water, or "surface water", and can not be used to acquire a right to the use of groundwater. Review the questions on the application as they will apply to your individual case. Answer only those questions that apply to the proposed appropriation being requested.

1. Complete name of applicant, current mailing address, including zip code, and telephone number. If the applicant is a corporation or business, give the name of the authorizing agent.
2. Give the name of the direct source of surface water, and the type of source. Give the name to which the source is tributary. Appropriable public water, or "surface water", is defined as meaning "the waters of all sources, flowing in streams, canyons, ravines or other natural channels, or in definite underground channels, whether perennial or intermittent, flood, waste or surplus water, and of lakes, ponds and springs on the surface".
3. Describe the type of proposed beneficial use(s):
 - A. **DOMESTIC** - Give the number of families and total number of persons that would use the water from the source.
 - B. **MUNICIPAL** - Give the population to be served and an estimate of future population and water use requirements. Exhibits may be attached as evidence.
 - C. **IRRIGATION** - Give the legal land description of the location of the proposed irrigation use. Give the total number of acres to be irrigated and the type of crop to be irrigated.
 - D. **STOCKWATERING** - Give the type of stock and the maximum, minimum, and average number of stock that would use the water.
 - E. **POWER** - Describe the nature of the works by which power is to be developed, the pressure head, the points of release of water, and the uses to which the power would be applied.
 - F. **MINING** - Describe the methods of developing, supplying, and using the water. If some water is to be returned to the source, give an estimate as to what percentage would be returned.
 - G. **RECREATION** - Describe the character of the area to be served and the specific water uses.
 - H. **WILDLIFE** (including fish) - Describe the type and number of wildlife, the character of the area to be served and the specific purpose of the water use.
 - I. **GROUNDWATER RECHARGE and STORAGE AND RECOVERY** - describe the proposed project in general terms and provide any application or permit numbers acquired for either type of project. Additional information on the requirements for a Recharge Project or a Storage and Recovery Project are available upon request from the Department of Water Resources.
4. Specify separately each proposed beneficial use. Give the type of use, the amount and measure being used, and the specific months of the year that the use would occur. The measure of use for irrigation should be listed as acre-feet, one acre-foot containing 325,851 gallons. The measure of use for a flow rate should be given as cubic-feet per-second (cfs). Use total gallons-per-annum(year) for stockwatering and wildlife.

5. Location of proposed point of diversion: County: _____
 _____ ¼ _____ ¼ of Section, _____ Township _____ Range _____
6. Location of proposed place(s) of use: County: _____
 _____ ¼ _____ ¼ of Section, _____ Township _____ Range _____
 _____ ¼ _____ ¼ of Section, _____ Township _____ Range _____
7. Describe how the appropriated water is to be developed and put to the stated beneficial use: _____

8. Storage of water: A. Name of reservoir: _____ B. Dam height at downstream face: _____ feet
 C. Maximum storage: _____ acre-feet. D. Capacity for each foot in depth in cubic feet:

9. Construction of facility or diversion works: Number of months to begin construction: _____; Number of months to complete project _____; and put the water to the proposed beneficial use: _____.
 If the facility or diversion is in place and the appropriated water has been put to the beneficial use, give the date of construction or completion of the facility and first date of beneficial use: _____
10. Owner of land on which the appropriation is located: _____
 A. Indicate land ownership: Private _____, State _____, BLM _____, National Forest _____, Other _____,
 B. Does the applicant have legal access to both the proposed diversion point and place(s) of use?
 Yes _____ No _____ If "No", explain in item 12 below.
 C. If the land is held by lease, give the lease or allottee number: _____, and submit copy of lease. For proposed appropriations located on BLM or Forest Service lands, the applicant must obtain a letter of authorization for the proposed appropriation and submit the letter to the Department with the application.
11. Is the water to be used supplementally with other water(s)? Yes _____ No _____ If "yes", identify other waters or water rights, and explain: _____

12. Additional comments or explanations: _____

13. Attach examination fee of \$25.00. Also attach a United States Geological Survey topographic quadrangle map, or copy thereof, clearly showing the proposed point of diversion, any conveyance system, and the place(s) of use. Attach copy of deed showing land ownership or letter of authorization from landowner.

Submit the completed application, with examination fee, to the Arizona Department of Water Resources, Operations Division, 15 South 15th Avenue, Phoenix, Arizona 85007.

_____ date

_____ Signature of Applicant/ or Representative
 (if representative, submit documentation)

No. _____
Filed _____

**APPLICATION FOR PERMIT TO APPROPRIATE
PUBLIC WATER OF THE STATE OF ARIZONA**

1. Name _____, Telephone _____
Address _____

2. Type of water source and name, if any: _____
being tributary to: _____ on the _____ watershed
(for office use only)

3. Proposed beneficial use of water:

- A. Domestic: Number of persons _____ number of families _____
- B. Municipal: Describe population served and estimate of future population and water requirements on an attachment.
- C. Irrigation:

1) Location of the acreage to be irrigated:

_____ 1/4 _____ 1/4 _____ 1/4 of Section _____, Township _____ N/S, Range _____ E/W

_____ 1/4 _____ 1/4 _____ 1/4 of Section _____, Township _____ N/S, Range _____ E/W

2) Total number of acres to be irrigated: _____ 3) Type of crop: _____

D. Stockwatering:

1) Kind of stock: _____ 2) Number of stock: Max _____, Min. _____, Avg. _____

E. Power: Describe on attachment.

F. Mining: Describe the type of mining and the method of supplying and using the water on an attachment, must also submit copy of accepted plan of operation if located on Federal or State lands.

G. Recreation: Describe: _____

H. Wildlife: Describe kind of wildlife and character of area to be served: _____

I. Groundwater recharge: Describe on an attachment.

4. Amount of proposed beneficial water use:

Proposed Use	Amount and Measure	Specific Months of Use
_____	_____	_____
_____	_____	_____
_____	_____	_____

5. Location of proposed point of diversion: County: _____
 _____ 1/4 _____ 1/4 of Section, _____ Township _____ Range _____

6. Location of proposed place of use: County: _____
 _____ 1/4 _____ 1/4 of Section, _____ Township _____ Range _____
 _____ 1/4 _____ 1/4 of Section, _____ Township _____ Range _____

7. Describe how the appropriated water is to be developed and put to the stated beneficial use: _____

8. Storage of water: A. _____ B. Dam height at downstream face: _____ feet
 C. Maximum storage: _____ acre-feet. D. Capacity for each foot in depth in cubic feet: _____

9. Construction of facility to divert water: Number of months to begin construction: _____; Number of months to complete project _____; Date that the water to the proposed beneficial use: _____
 If the facility or diversion of appropriated water has been put to the beneficial use, give the date of construction or completion of the facility and date of beneficial use: _____

10. Owner of land on which the appropriation is located: _____
 A. Indicate land ownership: _____, State _____, BLM _____, National Forest _____, Other _____
 B. Does the applicant own the land on which the proposed diversion point and place(s) of use?
 Yes _____ If "no", explain in item 12 below.
 C. If the land is leased, provide name of lessor or allottee number: _____, and submit copy of lease. For proposed appropriations located on public domain or Forest Service lands, the applicant must obtain a letter of authorization for the proposed appropriation and submit it to the Department with the application.

11. Is the water to be used in conjunction with other water(s)? Yes _____ No _____ If "yes", identify other waters or water rights, and explain: _____

12. Additional comments: _____

13. Attach examination of the proposed diversion point and place(s) of use on a United States Geological Survey topographic quadrangle map, or copy thereof, clearly showing the proposed diversion point, conveyance system, and the place(s) of use. Attach copy of deed showing land ownership or letter of authorization.

Submit the completed application and fee to the Arizona Department of Water Resources, Operations Division, 15 South 15th Avenue, Phoenix, Arizona 85004.

 Signature of Applicant/ or Representative
 (if representative, submit documentation)

Arizona Department of Water Resources
15 South 15th Avenue
Phoenix, Arizona 85007

No. _____
Filed _____

**APPLICATION FOR PERMIT TO APPROPRIATE
PUBLIC WATER OF THE STATE OF ARIZONA**

1. Name _____, Telephone _____
Address _____

2. Type of water source and name, if any: _____
being tributary to: _____ on the _____ watershed
(for office use only)

3. Proposed beneficial use of water:

- A. Domestic: Number of persons _____ number of families _____
- B. Municipal: Describe population served and estimate of future population and water requirements on an attachment.
- C. Irrigation:

1) Location of the acreage to be irrigated:

_____ 1/4 _____ 1/4 _____ 1/4 of Section _____, Township _____ N/S, Range _____ E/W
_____ 1/4 _____ 1/4 _____ 1/4 of Section _____, Township _____ N/S, Range _____ E/W

2) Total number of acres to be irrigated: _____ 3) Type of crop: _____

D. Stockwatering:

1) Kind of stock: _____ 2) Number of stock: Max _____, Min. _____, Avg. _____

E. Power: Describe on attachment.

F. Mining: Describe the type of mining and the method of supplying and using the water on an attachment, must also submit copy of accepted plan of operation if located on Federal or State lands.

G. Recreation: Describe: _____

H. Wildlife: Describe kind of wildlife and character of area to be served: _____

I. Groundwater recharge: Describe on an attachment.

4. Amount of proposed beneficial water use:

Proposed Use	Amount and Measure	Specific Months of Use
_____	_____	_____
_____	_____	_____
_____	_____	_____

5. Location of proposed point of diversion: County: _____
 _____ 1/4 _____ 1/4 of Section, _____ Township _____ Range _____
6. Location of proposed place(s) of use: County: _____
 _____ 1/4 _____ 1/4 of Section, _____ Township _____ Range _____
 _____ 1/4 _____ 1/4 of Section, _____ Township _____ Range _____

7. Describe how the appropriated water is to be developed and put to the stated beneficial use: _____

8. Storage of water: A. Depth of storage: _____ B. Dam height at downstream face: _____ feet
 C. Maximum storage: _____ acre-feet. D. Capacity for each foot in depth in cubic feet: _____

9. Construction of facility or diversion works: Number of months to begin construction: _____; Number of months to complete project _____; and put the water to the proposed beneficial use: _____.

If the facility or diversion is completed and the appropriated water has been put to the beneficial use, give the date of construction or completion of the facility and date of beneficial use: _____

10. Owner of land on which the appropriation is located: _____
- A. Indicate land ownership: Federal _____, State _____, BLM _____, National Forest _____, Other _____.
- B. Does the applicant have legal access to both the proposed diversion point and place(s) of use?
 Yes _____ If "No", explain in item 12 below.
- C. If the land is held under lease, provide lease or allottee number: _____, and submit copy of lease. For proposed appropriations located on Bureau of Land Management Service lands, the applicant must obtain a letter of authorization for the proposed appropriation and submit it to the Department with the application.

11. Is the water to be used commingled with other water(s)? Yes _____ No _____ If "yes", identify other waters or water rights, and explain: _____

12. Additional comments: _____

13. Attach examination fee receipt and a United States Geological Survey topographic quadrangle map, or copy thereof, clearly showing the proposed point of diversion, conveyance system, and the place(s) of use. Attach copy of deed showing land ownership or letter of authorization.

Submit the completed application, including the examination fee, to the Arizona Department of Water Resources, Operations Division, 15 South 15th Avenue, Phoenix, Arizona.

 Signature of Applicant/ or Representative
 (if representative, submit documentation)

Arizona Department of Water Resources
15 South 15th Avenue
Phoenix, Arizona 85007

No. _____
Filed _____

APPLICATION FOR PERMIT TO APPROPRIATE
PUBLIC WATER OF THE STATE OF ARIZONA

1. Name _____, Telephone _____
Address _____

2. Type of water source and name, if any: _____
being tributary to: _____ on the _____ watershed
(for office use only)

3. Proposed beneficial use of water:

- A. Domestic: Number of persons _____ number of families _____
- B. Municipal: Describe population served and estimate of future population and water requirements on an attachment.
- C. Irrigation:

1) Location of the acreage to be irrigated:

_____ 1/4 _____ 1/4 _____ 1/4 of Section _____, Township _____ N/S, Range _____ E/W
_____ 1/4 _____ 1/4 _____ 1/4 of Section _____, Township _____ N/S, Range _____ E/W

2) Total number of acres to be irrigated: _____ 3) Type of crop: _____

D. Stockwatering:

1) Kind of stock: _____ 2) Number of stock: Max _____, Min. _____, Avg. _____

E. Power: Describe on attachment.

F. Mining: Describe the type of mining and the method of supplying and using the water on an attachment, must also submit copy of accepted plan of operation if located on Federal or State lands.

G. Recreation: Describe: _____

H. Wildlife: Describe kind of wildlife and character of area to be served: _____

I. Groundwater recharge: Describe on an attachment.

4. Amount of proposed beneficial water use:

Proposed Use	Amount and Measure	Specific Months of Use
_____	_____	_____
_____	_____	_____
_____	_____	_____

5. Location of proposed point of diversion: County: _____
 _____ 1/4 _____ 1/4 of Section, _____ Township _____ Range _____
6. Location of proposed place(s) of use: County: _____
 _____ 1/4 _____ 1/4 of Section, _____ Township _____ Range _____
 _____ 1/4 _____ 1/4 of Section, _____ Township _____ Range _____
7. Describe how the appropriated water is to be developed and put to the stated beneficial use: _____

8. Storage of water: A. Name of reservoir: _____ B. Dam height at downstream face: _____ feet
 C. Maximum storage: _____ acre-feet. D. Capacity for each foot in depth in cubic feet:

9. Construction of facility or diversion works: Number of months to begin construction: _____; Number of months to complete project _____; and put the water to the proposed beneficial use: _____
 If the facility or diversion is in place and the appropriated water has been put to the beneficial use, give the date of construction or completion of the facility and first date of beneficial use: _____
10. Owner of land on which the appropriation is located: _____
 A. Indicate land ownership: Private _____, State _____, BLM _____, National Forest _____, Other _____
 B. Does the applicant have legal access to both the proposed diversion point and place(s) of use?
 Yes _____ No _____ If "No", explain in item 12 below.
 C. If the land is held by lease, give the lease or allottee number: _____, and submit copy of lease. For proposed appropriations located on BLM or Forest Service lands, the applicant must obtain a letter of authorization for the proposed appropriation and submit it to the Department with the application.
11. Is the water to be used supplemented with other water(s)? Yes _____ No _____ If "yes", identify other waters or water rights, and explain: _____

12. Additional comments or explanation: _____

13. Attach examination fee of _____ Attach a United States Geological Survey topographic quadrangle map, or copy thereof, clearly showing the proposed point of diversion, any conveyance system, and the place(s) of use. Attach copy of deed showing land ownership or letter of authorization from landowner.

Submit the completed application, with examination fee, to the Arizona Department of Water Resources, Operations Division, 15 South 15th Avenue, Phoenix, Arizona 85007.

 Signature of Applicant/ or Representative
 (if representative, submit documentation)

Arizona Department of Water Resources
15 South 15th Avenue
Phoenix, Arizona 85007

No. _____
Filed _____

APPLICATION FOR PERMIT TO APPROPRIATE
PUBLIC WATER OF THE STATE OF ARIZONA

1. Name _____, Telephone _____

Address _____

2. Type of water source and name, if any: _____

being tributary to: _____ on the _____ watershed
(for office use only)

3. Proposed beneficial use of water:

- A. Domestic: Number of persons _____ number of families _____
- B. Municipal: Describe population served and estimate of future population and water requirements on an attachment.
- C. Irrigation:
 - 1) Location of the acreage to be irrigated:

_____ 1/4 _____ 1/4 _____ 1/4 of Section _____, Township _____ N/S, Range _____ E/W

_____ 1/4 _____ 1/4 _____ 1/4 of Section _____, Township _____ N/S, Range _____ E/W

2) Total number of acres to be irrigated: _____ 3) Type of crop: _____

D. Stockwatering:

1) Kind of stock: _____ 2) Number of stock: Max _____, Min. _____, Avg. _____

E. Power: Describe on attachment.

F. Mining: Describe the type of mining and the method of supplying and using the water on an attachment, must also submit copy of accepted plan of operation if located on Federal or State lands.

G. Recreation: Describe: _____

H. Wildlife: Describe kind of wildlife and character of area to be served: _____

I. Groundwater recharge: Describe on an attachment.

4. Amount of proposed beneficial water use:

Proposed Use	Amount and Measure	Specific Months of Use
_____	_____	_____
_____	_____	_____
_____	_____	_____

5. Location of proposed point of diversion: County: _____
 _____ ¼ _____ ¼ of Section, _____ Township _____ Range _____
6. Location of proposed place(s) of use: County: _____
 _____ ¼ _____ ¼ of Section, _____ Township _____ Range _____
 _____ ¼ _____ ¼ of Section, _____ Township _____ Range _____
7. Describe how the appropriated water is to be developed and put to the stated beneficial use: _____

8. Storage of water: A. Name of reservoir: _____ B. Dam height at downstream face: _____ feet
 C. Maximum storage: _____ acre-feet. D. Capacity for each foot in depth in cubic feet:

9. Construction of facility or diversion works: Number of months to begin construction: _____; Number of months to complete project _____; and put the water to the proposed beneficial use: _____
 If the facility or diversion is in place and the appropriated water has been put to the beneficial use, give the date of construction or completion of the facility and first date of beneficial use: _____
10. Owner of land on which the appropriation is located: _____
 A. Indicate land ownership: Private _____, State _____, BLM _____, National Forest _____, Other _____
 B. Does the applicant have legal access to both the proposed diversion point and place(s) of use?
 Yes _____ No _____ If "No", explain in item 12 below.
 C. If the land is held by lease, give the lease or allottee number: _____, and submit copy of lease. For proposed appropriations located on BLM or Forest Service lands, the applicant must obtain a letter of authorization for the proposed appropriation and submit the letter to the Department with the application.
11. Is the water to be used supplementally with other water(s)? Yes _____ No _____ If "yes", identify other waters or water rights, and explain: _____

12. Additional comments or explanations: _____

13. Attach examination fee of \$21.00. Also attach a United States Geological Survey topographic quadrangle map, or copy thereof, clearly showing the proposed point of diversion, any conveyance system, and the place(s) of use. Attach copy of deed showing land ownership or letter of authorization from landowner.

Submit the completed application, with examination fee, to the Arizona Department of Water Resources, Operations Division, 15 South 15th Avenue, Phoenix, Arizona 85007.

 Signature of Applicant/ or Representative
 (if representative, submit documentation)

No. _____
Filed _____

APPLICATION FOR PERMIT TO APPROPRIATE PUBLIC WATER OF THE STATE OF ARIZONA

1. Name _____, Telephone _____

Address _____

2. Type of water source and name, if any: _____

being tributary to: _____ on the _____ watershed
(for office use only)

3. Proposed beneficial use of water:

A. Domestic: Number of persons _____ number of families _____

B. Municipal: Describe population served and estimate of future population and water requirements on an attachment.

C. Irrigation:

1) Location of the acreage to be irrigated:

_____ 1/4 _____ 1/4 _____ 1/4 of Section _____, Township _____ N/S, Range _____ E/W

_____ 1/4 _____ 1/4 _____ 1/4 of Section _____, Township _____ N/S, Range _____ E/W

2) Total number of acres to be irrigated: _____ 3) Type of crop: _____

D. Stockwatering:

1) Kind of stock: _____ 2) Number of stock: Max _____, Min. _____, Avg. _____

E. Power: Describe on attachment.

F. Mining: Describe the type of mining and the method of supplying and using the water on an attachment, must also submit copy of accepted plan of operation if located on Federal or State lands.

G. Recreation: Describe: _____

H. Wildlife: Describe kind of wildlife and character of area to be served: _____

I. Groundwater recharge: Describe on an attachment.

4. Amount of proposed beneficial water use:

Proposed Use	Amount and Measure	Specific Months of Use
_____	_____	_____
_____	_____	_____
_____	_____	_____

ARIZONA DEPARTMENT OF WATER RESOURCES

15 South 15th Avenue, Phoenix, Arizona 85007
Telephone (602) 542-1581
Fax (602) 542-3383



FIFE SYMINGTON
Governor

RITA P. PEARSON
Director

October 1, 1993

Arimetco Inc.
Attn: Allen Wells
6245 East Broadway, Ste. 350
Tucson, Arizona 85711

Re: Application for Permit to Appropriate Public
Water Right Nos. 33-96293.0000, 33-96294.0000, 33-96295.0000

Dear Mr. Wells:

Enclosed are two copies of the Notice of Application to Appropriate Public Water and an Affidavit-of-Posting-Notice form for the referenced applications.

The Notices should be posted within twenty (20) days from the date of issuance appearing at the bottom thereof. The Notices must be posted in two conspicuous public places, and should remain posted continuously for thirty (30) days. The Department suggests one Notice be posted at the Post Office nearest the location of the proposed appropriation, and the other Notice be posted at the site of the appropriation.

At the conclusion of the thirty-day posting period, the Affidavits-of-Posting-Notice form, with one copy of the Notice attached, must be completed, notarized, and filed with the Department.

Yours truly,

A handwritten signature in cursive script that reads "Miros Gutierrez".

Miros Gutierrez
Surface Water Rights Specialist
Operations Division

MG:hs

Enclosures

*CALLER
1/27/94
9:55 AM.*

*ISSUANCE
FEB 17th w/ NO PROTEST.*