



CONTACT INFORMATION
Mining Records Curator
Arizona Geological Survey
3550 N. Central Ave, 2nd floor
Phoenix, AZ, 85012
602-771-1601
<http://www.azgs.az.gov>
inquiries@azgs.az.gov

The following file is part of the West Oatman Project mining collection

ACCESS STATEMENT

These digitized collections are accessible for purposes of education and research. We have indicated what we know about copyright and rights of privacy, publicity, or trademark. Due to the nature of archival collections, we are not always able to identify this information. We are eager to hear from any rights owners, so that we may obtain accurate information. Upon request, we will remove material from public view while we address a rights issue.

CONSTRAINTS STATEMENT

The Arizona Geological Survey does not claim to control all rights for all materials in its collection. These rights include, but are not limited to: copyright, privacy rights, and cultural protection rights. The User hereby assumes all responsibility for obtaining any rights to use the material in excess of "fair use."

The Survey makes no intellectual property claims to the products created by individual authors in the manuscript collections, except when the author deeded those rights to the Survey or when those authors were employed by the State of Arizona and created intellectual products as a function of their official duties. The Survey does maintain property rights to the physical and digital representations of the works.

QUALITY STATEMENT

The Arizona Geological Survey is not responsible for the accuracy of the records, information, or opinions that may be contained in the files. The Survey collects, catalogs, and archives data on mineral properties regardless of its views of the veracity or accuracy of those data.

WORKORDER : 89210640-V02

Client : REYNOLDS METALS EXPLORATION INC.

HVI

5301 LONGLEY LANE, STE. 157
 KEND, NEVADA
 89511

Project
 ATTN:RAY IRWIN

Printout date :

Sample #	Sample descr.	2983 Au ppb	FA+AA
41	FB92-2 200-205	25	
42	FB92-2 205-210	30	
43	FB92-2 210-215	20	
44	FB92-2 215-220	15	
45	FB92-2 220-225	10	
46	FB92-2 225-230	<5	
47	FB92-2 230-235	5	
48	FB92-2 235-240	5	
49	FB92-2 240-245	<5	
50	FB92-2 245-250	<5	
51	FB92-2 250-255	5	
52	FB92-2 255-260	5	
53	FB92-2 260-265	<5	
54	FB92-2 265-270	5	
55	FB92-2 270-275	15	
56	FB92-2 275-280	15	
57	FB92-2 280-285	<5	
58	FB92-2 285-290	<5	
59	FB92-2 290-295	<5	
60	FB92-2 295-300	<5	
STD1	IDN-1	230	
61	FB92-2 200-205	30	
62	FB92-2 200-305	<5	
63	FB92-2 305-310	20	
64	FB92-2 310-315	10	
65	FB92-2 315-320	15	
66	FB92-2 320-325	40	
67	FB92-2 325-330	30	
68	FB92-2 330-335	15	
69	FB92-2 335-340	10	
70	FB92-2 340-345	25	
71	FB92-2 345-350	delay	
72	FB92-2 350-355	delay	
73	FB92-2 355-360	10	
74	FB92-2 360-365	<5	
75	FB92-2 365-370	<5	
76	FB92-2 370-375	<5	
77	FB92-2 375-380	15	
78	FB92-2 380-385	<5	
79	FB92-2 385-390	10	
80	FB92-2 390-395	5	
81	FB92-2 395-400	5	
STD2	IDN-1	240	
BLNK	PL-C	0	

15 ↓ ? *Possibly switched with #71
 75 ↓ Will have final on June 12th
 WAA

*** CHEMEX INTERNAL USE ONLY *** not to be used as a certificate of analysis

WORKORDER : A9215640-001

Client : REYNOLDS METALS EXPLORATION INC.

RWE

5301 LONGLEY LANE, STE. 157

RENO, NEVADA

89511

Project
ATTN:RAY IKMIN

Printout date :

2983

Sample
descr.

AU PPB
FA+AA

1	FB92-2	000-005	<5
2	FB92-2	005-010	10
3	FB92-2	010-015	10
4	FB92-2	015-020	5
5	FB92-2	020-025	10
6	FB92-2	025-030	10
7	FB92-2	030-035	5
8	FB92-2	035-040	15
9	FB92-2	040-045	<5
10	FB92-2	045-050	<5
11	FB92-2	050-055	<5
12	FB92-2	055-060	5
13	FB92-2	060-065	<5
14	FB92-2	065-070	<5
15	FB92-2	070-075	<5
16	FB92-2	075-080	<5
17	FB92-2	080-085	<5
18	FB92-2	085-090	<5
19	FB92-2	090-095	<5
20	FB92-2	095-100	<5
STD1	IDN-1		230
DUPL	FB92-2	000-005	5
21	FB92-2	100-105	<5
22	FB92-2	105-110	<5
23	FB92-2	110-115	<5
24	FB92-2	115-120	5
25	FB92-2	120-125	<5
26	FB92-2	125-130	<5
27	FB92-2	130-135	<5
28	FB92-2	135-140	<5
29	FB92-2	140-145	<5
30	FB92-2	145-150	<5
31	FB92-2	150-155	<5
32	FB92-2	155-160	5
33	FB92-2	160-165	105
34	FB92-2	165-170	145
35	FB92-2	170-175	15
36	FB92-2	175-180	85
37	FB92-2	180-185	90
38	FB92-2	185-190	230
39	FB92-2	190-195	120
40	FB92-2	195-200	20
STD2	IDN-1		250
BLNK	BL-C		1

AAAA CHEMEX INTERNAL USE ONLY -- not to be used as a certificate of analy



Chemex Labs Ltd.

Analytical Chemists * Geochemists * Registered Assayers
 212 Brooksbank Ave., North Vancouver
 British Columbia, Canada V7J 2C1
 PHONE: 604-984-0221

To: REYNOLDS METALS EXPLORATION INC.

5301 LONGLEY LANE, STE. 157
 RENO, NEVADA
 89511

Page Number 1
 Total Pages 2
 Certificate Date 15-JUN-92
 Invoice No. I-9215640
 P.O. Number :
 Account :

Project : FB92-2 WEST OATMAN
 Comments: ATTN:RAY IRWIN

CERTIFICATE OF ANALYSIS A9215640

SAMPLE DESCRIPTION	PREP CODE	Au ppb FA+AA											
FB92-2 000-005	205 276	< 5											
FB92-2 005-010	205 276	10											
FB92-2 010-015	205 276	10											
FB92-2 015-020	205 276	5											
FB92-2 020-025	205 276	10											
FB92-2 025-030	205 276	10											
FB92-2 030-035	205 276	5											
FB92-2 035-040	205 276	15											
FB92-2 040-045	205 276	< 5											
FB92-2 045-050	205 276	< 5											
FB92-2 050-055	205 276	< 5											
FB92-2 055-060	205 276	5											
FB92-2 060-065	205 276	< 5											
FB92-2 065-070	205 276	< 5											
FB92-2 070-075	205 276	< 5											
FB92-2 075-080	205 276	< 5											
FB92-2 080-085	205 276	< 5											
FB92-2 085-090	205 276	< 5											
FB92-2 090-095	205 276	< 5											
FB92-2 095-100	205 276	< 5											
FB92-2 100-105	205 276	< 5											
FB92-2 105-110	205 276	< 5											
FB92-2 110-115	205 276	< 5											
FB92-2 115-120	205 276	65											
FB92-2 120-125	205 276	< 5											
FB92-2 125-130	205 276	< 5											
FB92-2 130-135	205 276	< 5											
FB92-2 135-140	205 276	< 5											
FB92-2 140-145	205 276	< 5											
FB92-2 145-150	205 276	< 5											
FB92-2 150-155	205 276	< 5											
FB92-2 155-160	205 276	35											
FB92-2 160-165	205 276	105											
FB92-2 165-170	205 276	145											
FB92-2 170-175	205 276	15											
FB92-2 175-180	205 276	85											
FB92-2 180-185	205 276	90											
FB92-2 185-190	205 276	230											
FB92-2 190-195	205 276	120											
FB92-2 195-200	205 276	20											

CERTIFICATION: _____

To: REYNOLDS METALS EXPLORATION INC.
 5301 LONGLEY LANE, STE. 157
 RENO, NEVADA 89511
 Project : FB92-2 WEST OATMAN
 Comments: ATTN:RAY IRWIN

Page Number 2
 Total Pages 2
 Certificate Date 15-JUN-92
 Invoice No. 1-P215640
 P.O. Number :
 Account

CERTIFICATE OF ANALYSIS
A9215640

SAMPLE DESCRIPTION	PREP CODE	Au ppb	FA+AA						
FB92-2 200-205	205 276	205 276	25						
FB92-2 205-210	205 276	205 276	30						
FB92-2 210-215	205 276	205 276	20						
FB92-2 215-220	205 276	205 276	15						
FB92-2 220-225	205 276	205 276	10						
FB92-2 225-230	205 276	205 276	< 5						
FB92-2 230-235	205 276	205 276	< 5						
FB92-2 235-240	205 276	205 276	< 5						
FB92-2 240-245	205 276	205 276	< 5						
FB92-2 245-250	205 276	205 276	< 5						
FB92-2 250-255	205 276	205 276	5						
FB92-2 255-260	205 276	205 276	5						
FB92-2 260-265	205 276	205 276	< 5						
FB92-2 265-270	205 276	205 276	5						
FB92-2 270-275	205 276	205 276	15						
FB92-2 275-280	205 276	205 276	15						
FB92-2 280-285	205 276	205 276	< 5						
FB92-2 285-290	205 276	205 276	< 5						
FB92-2 290-295	205 276	205 276	< 5						
FB92-2 295-300	205 276	205 276	< 5						
FB92-2 300-305	205 276	205 276	< 5						
FB92-2 305-310	205 276	205 276	20						
FB92-2 310-315	205 276	205 276	10						
FB92-2 315-320	205 276	205 276	15						
FB92-2 320-325	205 276	205 276	40						
FB92-2 325-330	205 276	205 276	30						
FB92-2 330-335	205 276	205 276	15						
FB92-2 335-340	205 276	205 276	10						
FB92-2 340-345	205 276	205 276	25						
FB92-2 345-350	205 276	205 276	40						
FB92-2 350-355	205 276	205 276	50						
FB92-2 355-360	205 276	205 276	10						
FB92-2 360-365	205 276	205 276	< 5						
FB92-2 365-370	205 276	205 276	< 5						
FB92-2 370-375	205 276	205 276	< 5						
FB92-2 375-380	205 276	205 276	15						
FB92-2 380-385	205 276	205 276	< 5						
FB92-2 385-390	205 276	205 276	10						
FB92-2 390-395	205 276	205 276	5						
FB92-2 395-400	205 276	205 276	5						



Chemex Labs Ltd.

Analytical Chemists / Geochemists / Registered Assayers
 212 Brooksbank Ave. North Vancouver
 British Columbia, Canada V7J 2C1
 PHONE: 604-984-0221

To: REYNOLDS METALS EXPLORATION INC

5391 LONGLEY LANE, STE. 157
 RENO, NEVADA
 89511

Project: FB92-3 WEST GATMAN
 Comments: ATTN: RAY IRWIN

Page Number: 1
 Total Pages: 2
 Certificate Date: 12 JUN 92
 Invoice No.: A9215652
 P.O. Number:
 Account:

CERTIFICATE OF ANALYSIS A9215652

SAMPLE DESCRIPTION	PREP CODE	Au ppb FA+AA							
FB92-3 000-005	212 276	55							
FB92-3 005-010	212 276	5							
FB92-3 010-015	212 276	5							
FB92-3 015-020	212 276	5							
FB92-3 020-025	212 276	< 5							
FB92-3 025-030	212 276	10							
FB92-3 030-035	212 276								
FB92-3 035-040	212 276								
FB92-3 040-045	212 276								
FB92-3 045-050	212 276								
FB92-3 050-055	212 276	10							
FB92-3 055-060	212 276	15							
FB92-3 060-065	212 276	20							
FB92-3 065-070	212 276	40							
FB92-3 070-075	212 276	60							
FB92-3 075-080	212 276	10							
FB92-3 080-085	212 276	5							
FB92-3 085-090	212 276	10							
FB92-3 090-095	212 276	15							
FB92-3 095-100	212 276	15							
FB92-3 100-105	212 276	20							
FB92-3 105-110	212 276	< 5							
FB92-3 110-115	212 276	< 5							
FB92-3 115-120	212 276	< 5							
FB92-3 120-125	212 276	15							
FB92-3 125-130	212 276	20							
FB92-3 130-135	212 276	10							
FB92-3 135-140	212 276	5							
FB92-3 140-145	212 276	5							
FB92-3 145-150	212 276	< 5							
FB92-3 150-155	212 276	15							
FB92-3 155-160	212 276	145							
FB92-3 160-165	212 276	5							
FB92-3 165-170	212 276	< 5							
FB92-3 170-175	212 276	< 5							
FB92-3 175-180	212 276	< 5							
FB92-3 180-185	212 276	5							
FB92-3 185-190	212 276	< 5							
FB92-3 190-195	212 276	< 5							
FB92-3 195-200	212 276	< 5							



Chemex Labs Ltd.

Analytical Chemists * Geochemists * Registered Assayers
 212 Branksbank Ave., North Vancouver
 British Columbia, Canada V7J 2C1
 PHONE: 604-584-0221

To: REYNOLDS METALS EXPLORATION LTD

5301 LONGLEY LANE STE 107
 RENO, NEVADA
 89511

Project: FB92-3 WEST CATMAN
 Comments: ATTN RAY IRWIN

Page Number: 1
 Total Pages: 2
 Certificate Date: 12 JUN 92
 Invoice No.: 15215652
 P.O. Number:
 Account:

CERTIFICATE OF ANALYSIS A9215652

SAMPLE DESCRIPTION	PREP CODE	Au ppb FA-AA							
FB92-3 200-205	212	276	5						
FB92-3 205-210	212	276	< 5						
FB92-3 210-215	212	276	15						
FB92-3 215-220	212	276	5						
FB92-3 220-225	212	276	5						
FB92-3 225-230	212	276	5						
FB92-3 230-235	212	276	5						
FB92-3 235-240	212	276	5						
FB92-3 240-245	212	276	5						
FB92-3 245-250	212	276	5						
FB92-3 250-255	212	276	5						
FB92-3 255-260	212	276	5						
FB92-3 260-265	212	276	5						
FB92-3 265-270	212	276	10						
FB92-3 270-275	212	276	5						
FB92-3 275-280	212	276	5						
FB92-3 280-285	212	276	5						
FB92-3 285-290	212	276	5						
FB92-3 290-295	212	276	5						
FB92-3 295-300	212	276	5						
FB92-3 300-305	212	276	5						
FB92-3 305-310	212	276	80						
FB92-3 310-315	212	276	50						
FB92-3 315-320	212	276	10						
FB92-3 320-325	212	276	10						
FB92-3 325-330	212	276	5						
FB92-3 330-335	212	276	10						
FB92-3 335-340	212	276	10						
FB92-3 340-345	212	276	5						
FB92-3 345-350	212	276	5						
FB92-3 350-355	212	276	15						
FB92-3 355-360	212	276	10						
FB92-3 360-365	212	276	< 5						
FB92-3 365-370	212	276	< 5						
FB92-3 370-375	212	276	< 5						
FB92-3 375-380	212	276	15						
FB92-3 380-385	212	276	5						
FB92-3 385-390	212	276	10						
FB92-3 390-395	212	276	10						
FB92-3 395-400	212	276	10						

CERTIFICATION

06/12/92

1:44PM

CHEMEX LABS VAX-FAX

PAGE 03

Page Number 1
 Total Pages 2
 Certificate Date 15-JUN-92
 Invoice No. 1-B215668
 P.O. Number
 Account

To: REYNOLDS METALS EXPLORATION INC.

5301 LONGLEY LANE, STE. 157
 RENO, NEVADA
 89511

Project: FB92-4 WEST OATMAN

Comments: ATTN: RAY IRWIN

CERTIFICATE OF ANALYSIS
A9215668

Chemex Labs Ltd.



Analytical Chemists " Geochemists " Registered Assayers
 212 Brooksbank Ave., North Vancouver
 British Columbia, Canada V7J 2C1
 PHONE: 604-984-0221

SAMPLE DESCRIPTION	PREP CODE	Au ppb FA+AA
FB92-4 000-005	212 276	< 5
FB92-4 005-010	212 276	< 5
FB92-4 010-015	212 276	< 5
FB92-4 020-025	212 276	< 5
FB92-4 025-030	212 276	< 5
FB92-4 030-035	212 276	< 5
FB92-4 035-040	212 276	< 5
FB92-4 040-045	212 276	< 5
FB92-4 045-050	212 276	10
FB92-4 050-055	212 276	5
FB92-4 055-060	212 276	40
FB92-4 060-065	212 276	10
FB92-4 070-075	212 276	5
FB92-4 075-080	212 276	< 5
FB92-4 080-085	212 276	20
FB92-4 085-090	212 276	15
FB92-4 090-095	212 276	< 5
FB92-4 095-100	212 276	20
FB92-4 100-105	212 276	10
FB92-4 105-110	212 276	< 5
FB92-4 110-115	212 276	< 5
FB92-4 115-120	212 276	< 5
FB92-4 120-125	212 276	5
FB92-4 125-130	212 276	5
FB92-4 130-135	212 276	5
FB92-4 135-140	212 276	5
FB92-4 140-145	212 276	< 5
FB92-4 145-150	212 276	< 5
FB92-4 150-155	212 276	< 5
FB92-4 155-160	212 276	< 5
FB92-4 160-165	212 276	< 5
FB92-4 165-170	212 276	< 5
FB92-4 170-175	212 276	5
FB92-4 175-180	212 276	115
FB92-4 180-185	212 276	70
FB92-4 185-190	212 276	55
FB92-4 190-195	212 276	40
FB92-4 195-200	212 276	15

CERTIFICATION:



Chemex Labs Ltd.

Analytical Chemists * Geochemists * Registered Assayers
 212 Brooksbank Ave., North Vancouver
 British Columbia, Canada V7J 2C1
 PHONE: 604-984-0221

To: REYNOLDS METALS EXPLORATION INC.

5301 LONGLEY LANE, STE. 157
 RENO, NEVADA
 89511

Project: FB92-4 WEST OATMAN
 Comments: ATTN:RAY IRWIN

Page Number 2
 Total Pages 2
 Certificate Date: 15-JUN-92
 Invoice No. I-B215668
 P.O. Number :
 Account :

CERTIFICATE OF ANALYSIS

A9215668

SAMPLE DESCRIPTION	PREP CODE		Au ppb FA+AA									
FB92-4 200-205	212	276	45									
FB92-4 205-210	212	276	25									
FB92-4 210-215	212	276	20									
FB92-4 215-220	212	276	50									
FB92-4 220-225	212	276	135									
FB92-4 225-230	212	276	60									
FB92-4 230-235	212	276	435									
FB92-4 235-240	212	276	10									
FB92-4 240-245	212	276	15									
FB92-4 245-250	212	276	10									
FB92-4 250-255	212	276	5									
FB92-4 255-260	212	276	80									
FB92-4 260-265	212	276	10									
FB92-4 265-270	212	276	< 5									
FB92-4 270-275	212	276	25									
FB92-4 275-280	212	276	10									
FB92-4 280-285	212	276	< 5									
FB92-4 285-290	212	276	< 5									
FB92-4 290-295	212	276	10									
FB92-4 295-300	212	276	5									

CERTIFICATION: _____

WORKORDER : 492150002-001

Client : REYNOLDS METALS EXPLORATION INC.

HVE

Project
ACTIN:RAY IRMIN

3301 LONGLEY LANE, STE. 157
RENO, NEVADA
89511

Printout date :

2983

Sample
descr.

AU PPL
FA+AA

1	FB92-4	000-005	<5
2	FB92-4	005-010	<5
3	FB92-4	010-015	<5
4	FB92-4	015-020	<5
5	FB92-4	020-025	<5
5	FB92-4	025-030	5
7	FB92-4	030-035	<5
8	FB92-4	035-040	<5
9	FB92-4	040-045	<5
10	FB92-4	045-050	10
11	FB92-4	050-055	5
12	FB92-4	055-060	40
13	FB92-4	060-065	10
14	FB92-4	065-070	10
15	FB92-4	070-075	5
16	FB92-4	075-080	35
17	FB92-4	080-085	20
18	FB92-4	085-090	15
19	FB92-4	090-095	<5
20	FB92-4	095-100	20
STD1	IDN-1		215
20PL	FB92-4	000-005	<5
21	FB92-4	100-105	10
22	FB92-4	105-110	10
23	FB92-4	110-115	<5
24	FB92-4	115-120	5
25	FB92-4	120-125	5
26	FB92-4	125-130	5
27	FB92-4	130-135	5
28	FB92-4	135-140	5
29	FB92-4	140-145	<5
30	FB92-4	145-150	<5
31	FB92-4	150-155	<5
32	FB92-4	155-160	<5
33	FB92-4	160-165	<5
34	FB92-4	165-170	<5
35	FB92-4	170-175	5
36	FB92-4	175-180	115
37	FB92-4	180-185	70
38	FB92-4	185-190	55
39	FB92-4	190-195	40
40	FB92-4	195-200	15
STD2	IDN-1		230
PLNK	BL-C		0

*** CHEMEX INTERNAL USE ONLY -- not to be used as a certificate of analysis

WORKORDER : A9215008-002

CLIENT : REYNOLDS METALS EXPLORATION INC.

Project
ATTN: RAY IRWIN5001 LONGLEY LANE, STE. 157
RENO, NEVADA
89511

Printout date :

Sample #	Sample descr.	2983 Au ppb
		FA+AA
41	FR92-4 200-205	45
42	FR92-4 205-210	25
43	FR92-4 210-215	20
44	FR92-4 215-220	50
45	FR92-4 220-225	135
46	FR92-4 225-230	60
47	FR92-4 230-235	435
48	FR92-4 235-240	10
49	FR92-4 240-245	15
50	FR92-4 245-250	10
51	FR92-4 250-255	5
52	FR92-4 255-260	80
53	FR92-4 260-265	10
54	FR92-4 265-270	65
55	FR92-4 270-275	25
56	FR92-4 275-280	10
57	FR92-4 280-285	65
58	FR92-4 285-290	65
59	FR92-4 290-295	10
60	FR92-4 295-300	5
STDL	IRIN-1	225
DUPL	FR92-4 200-205	45

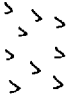
***** CHEMEX INTERNAL USE ONLY --- not to be used as a certificate of analy

Reynolds Metals Exploration, Inc.

West Oatman Project

Drill Log Key

Alcyone Fm.



Trachyte / Rhyolite Flows

Intrusive Rocks



Moss Porphyry / Times Porphyry



Andesite / Basalt Dike



Quartz-eye Rhyolite Dike



Breccia Vein



Quartz Stockwork Veining



Calcite Stockwork Veining



Clay Alteration

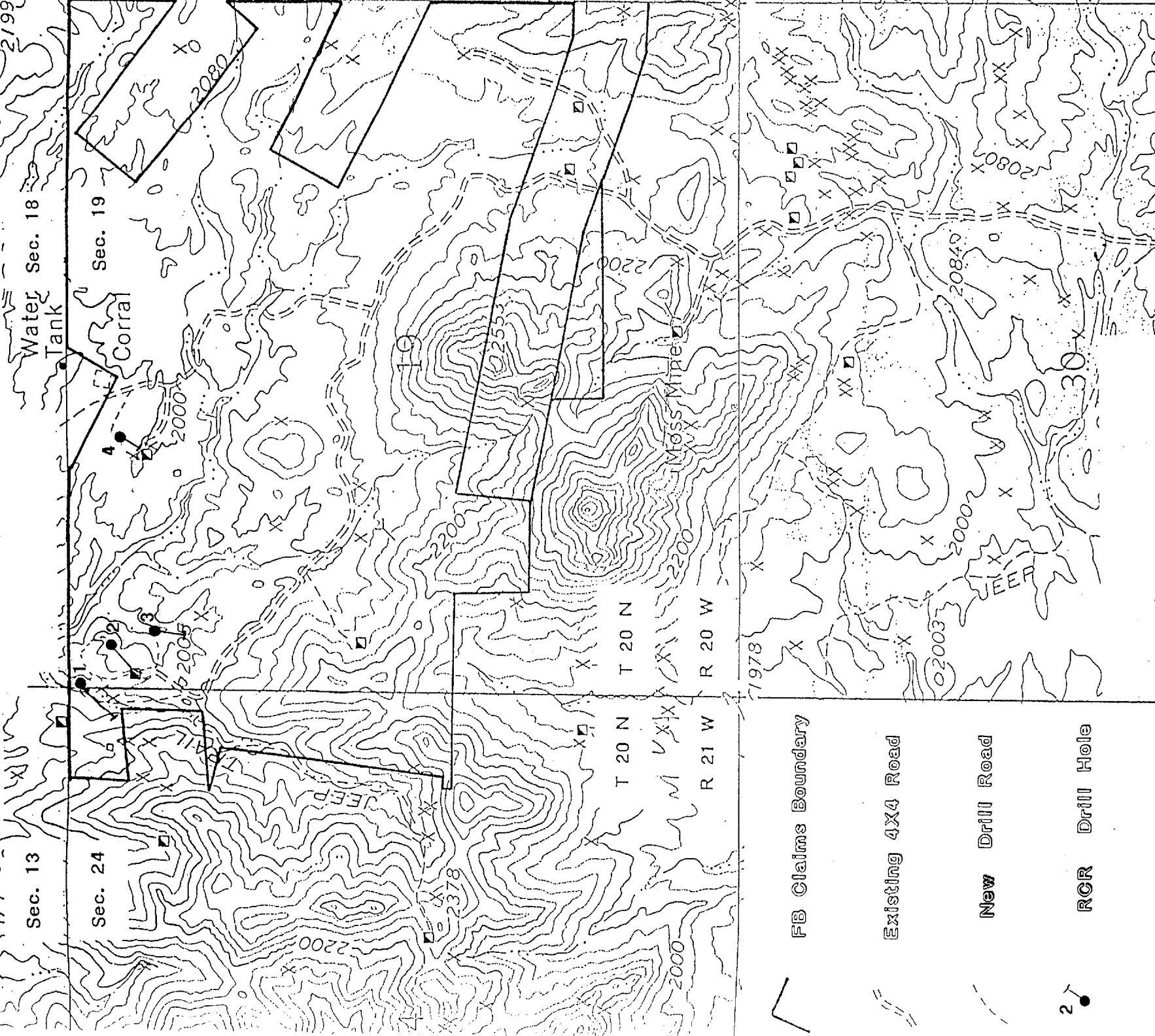


Qal / Fill

West Oatman Project

FB Claims

Drill Hole Map



1" = 1000'

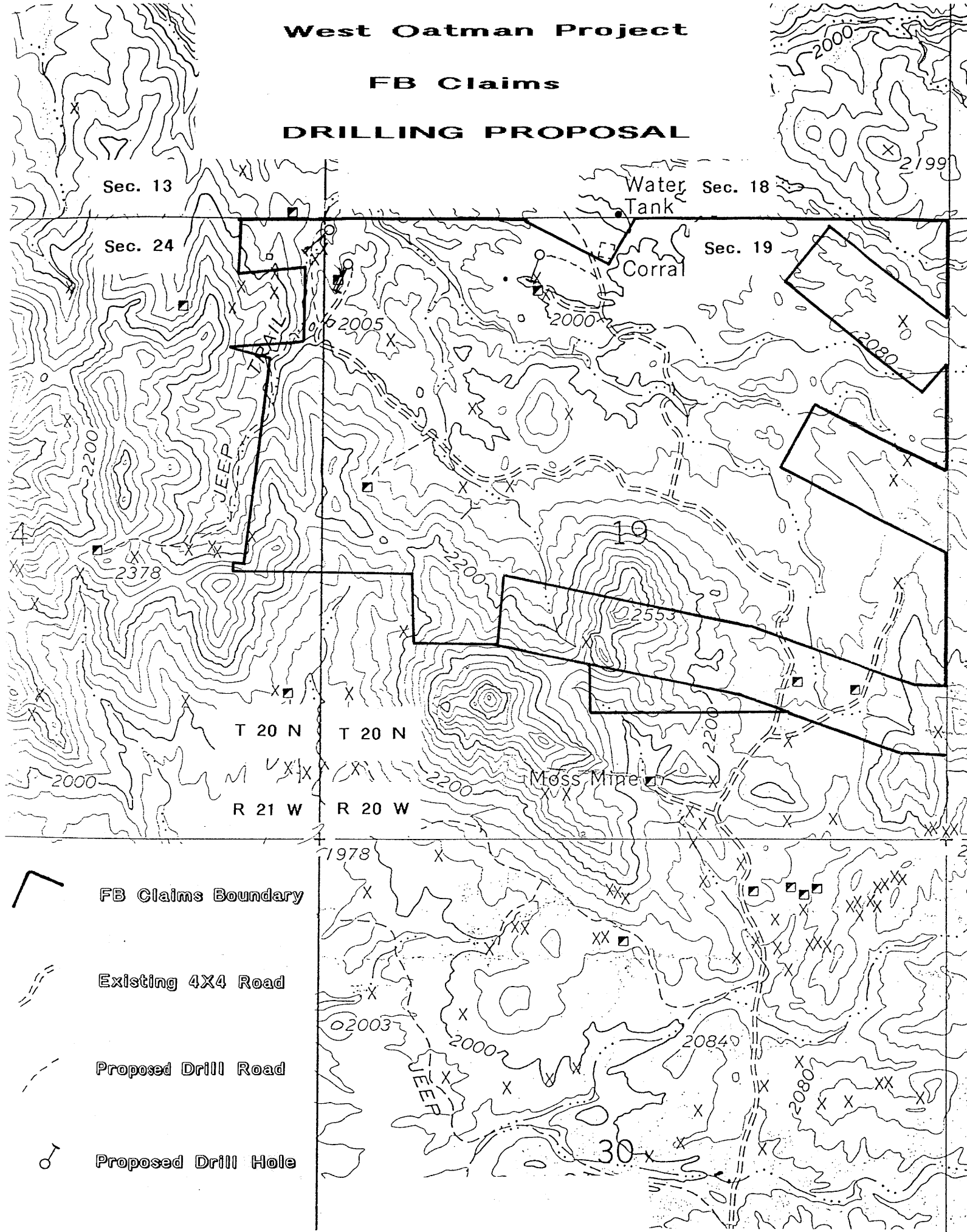
Mohave County, Arizona

Reynolds Metals Exploration Inc.

West Oatman Project

FB Claims

DRILLING PROPOSAL



Sec. 13

Sec. 18

Sec. 24

Sec. 19

T 20 N

T 20 N

R 21 W

R 20 W

FB Claims Boundary

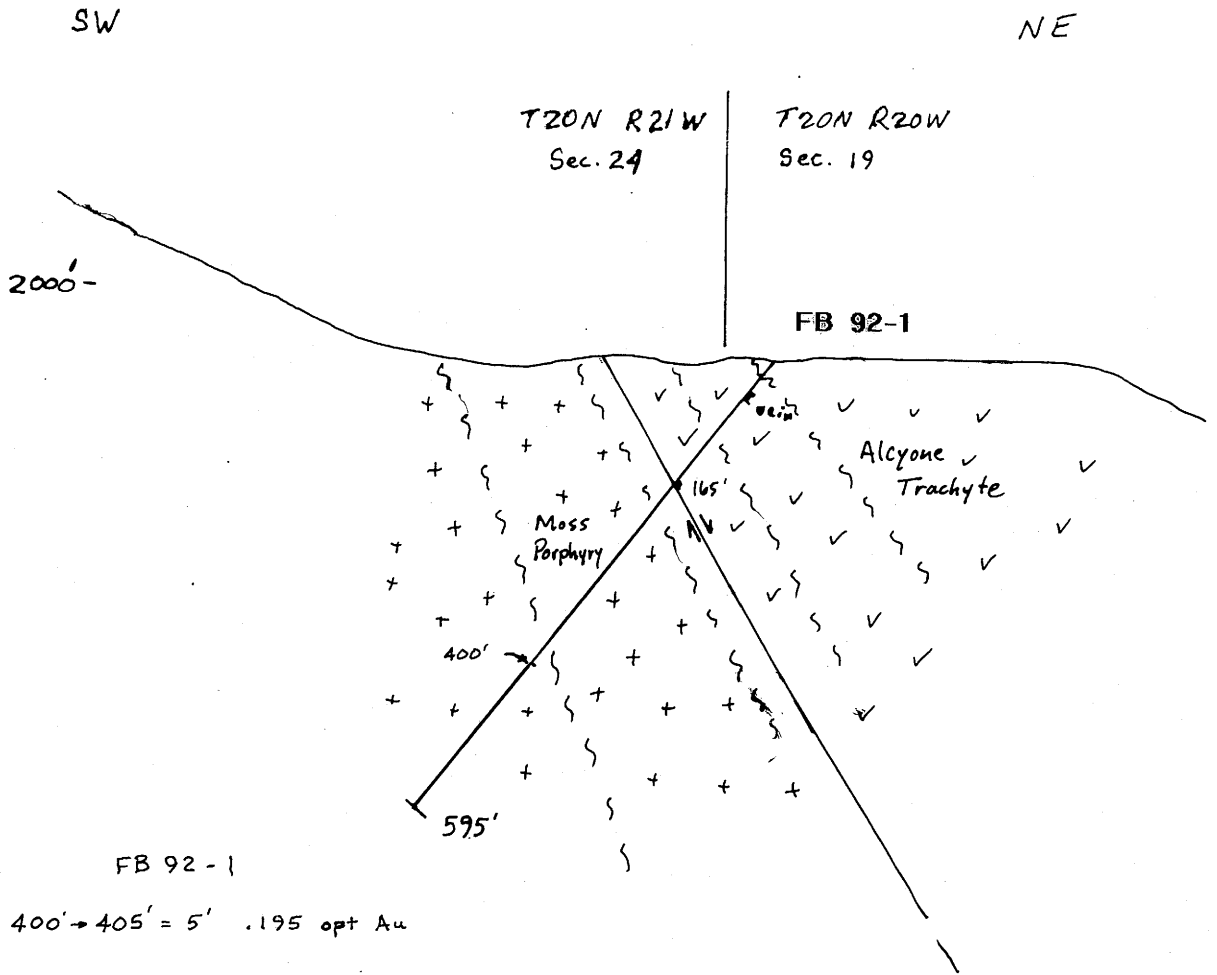
Existing 4X4 Road

Proposed Drill Road

Proposed Drill Hole

West Oatman Project

FB Claims



FB 92-1 S.40°W. -50° 595'

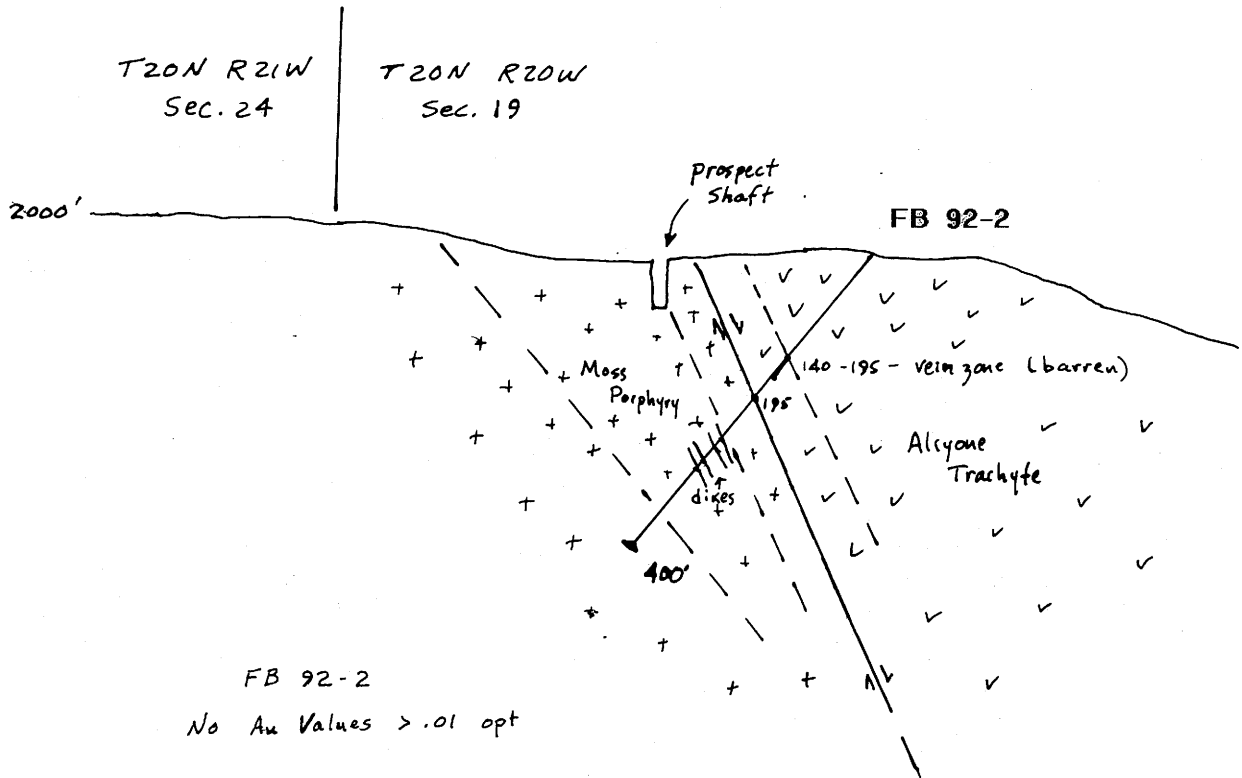


West Oatman Project

FB Claims

SW

NE



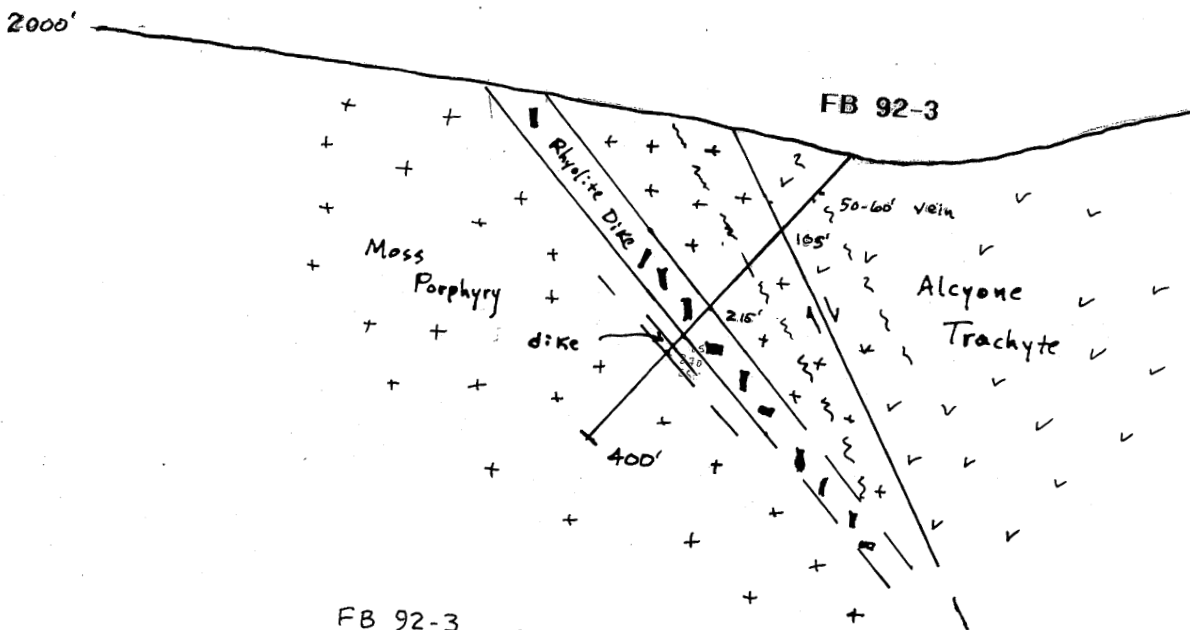
FB 92-2 S.57°W. -50° 400'



West Oatman Project FB Claims

S

N



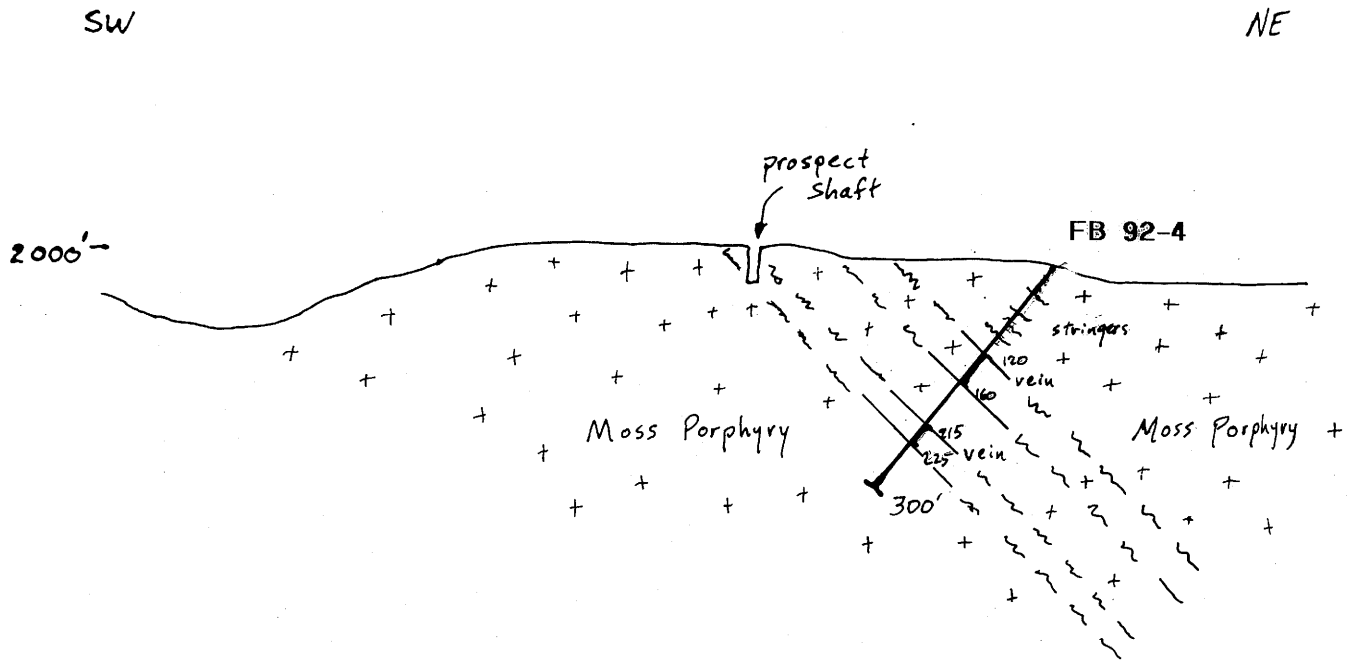
FB 92-3
No Au Values > .01 opt

FB 92-3 S.7°W. -50° 400'



West Oatman Project

FB Claims



FB 92-4

No Au Values > .01 opt

FB 92-4 S.24°W. -50° 300'



West Oatman Project

Proposed Drill Holes

FB Claims

