



CONTACT INFORMATION
Mining Records Curator
Arizona Geological Survey
3550 N. Central Ave, 2nd floor
Phoenix, AZ, 85012
602-771-1601
<http://www.azgs.az.gov>
inquiries@azgs.az.gov

The following file is part of the West Oatman Project mining collection

ACCESS STATEMENT

These digitized collections are accessible for purposes of education and research. We have indicated what we know about copyright and rights of privacy, publicity, or trademark. Due to the nature of archival collections, we are not always able to identify this information. We are eager to hear from any rights owners, so that we may obtain accurate information. Upon request, we will remove material from public view while we address a rights issue.

CONSTRAINTS STATEMENT

The Arizona Geological Survey does not claim to control all rights for all materials in its collection. These rights include, but are not limited to: copyright, privacy rights, and cultural protection rights. The User hereby assumes all responsibility for obtaining any rights to use the material in excess of "fair use."

The Survey makes no intellectual property claims to the products created by individual authors in the manuscript collections, except when the author deeded those rights to the Survey or when those authors were employed by the State of Arizona and created intellectual products as a function of their official duties. The Survey does maintain property rights to the physical and digital representations of the works.

QUALITY STATEMENT

The Arizona Geological Survey is not responsible for the accuracy of the records, information, or opinions that may be contained in the files. The Survey collects, catalogs, and archives data on mineral properties regardless of its views of the veracity or accuracy of those data.

RECEIVED NOV 30 1991

RIVIERA EXPLORATIONS LTD.
Suite 110, 12761 - 16th Avenue
White Rock, B.C., V4A 1N2

Tel (604)538-6601 Fax (604)538-5223

September 11, 1990

Mr. Donald L. C. Newsom
P.O. Box 1844
Ferndale, Washington
U.S.A. 98248

Dear Sir:

Re: Prospecting Permit No. 08-98357
S1/2 Section 32, T20N, R20W


With reference to our previous discussions pertaining to the above, this confirms our offer to acquire from you by way of assignment the above captioned prospecting permit for a total consideration of 100,000 free-trading common shares of Riviera Explorations Ltd.

It is agreed that the assignment shall be made to the wholly-owned US subsidiary of Riviera Explorations Ltd.

Please confirm your acceptance of this offer by signing the enclosed copy of this letter and returning same at your earliest convenience.

Thank you.

Yours truly,

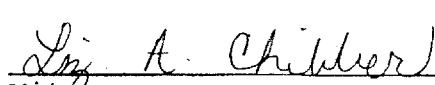

Tatjana K. Pessl
Secretary & Director
Riviera Explorations Ltd.

encl.

I, Donald L. C. Newsom, hereby acknowledge, confirm, agree to and accept the offer of Riviera Explorations Ltd. as outlined above.


Donald L. C. Newsom


Date


Witness


Date

SCHEDULE "A"

Black Wonder Lode Mining Claims
San Francisco Mining District, Mohave County
State of Arizona

Claim Name	Book	Page	AMC Number
U.S.M. #4	900	989	191007
U.S.M. #4a	930	261	197695
U.S.M. #5	900	991	191008
U.S.M. #6	900	993	191009
U.S.M. #7	900	995	191010
U.S.M. #7a	930	263	197696
U.S.M. #8	903	835	191969
U.S.M. #9	930	911	198037
U.S.M. #10	907	930	192647
U.S.M. #11	934	683	192648
U.S.M. #12	930	913	198038
U.S.M. #12a	930	915	198030
U.S.M. #13	930	917	198031
U.S.M. #13a	930	919	198032
U.S.M. #36	938	425	199670
U.S.M. #37	938	427	199761
U.S.M. #38	938	840	199932
U.S.M. #39	938	842	199933
U.S.M. #50	928	947	196373
U.S.M. #53	933	458	198587
U.S.M. #54	933	460	198588
U.S.M. #55	933	462	198589
U.S.M. #56	933	464	198590

MAP OF MINING CLAIM LOCATION

1. The name of the claim is U.S. M #4A (Fractional claim)
2. The SW corner of the claim is 1550 feet in a S28°45'E direction to a survey monument or permanent natural object described as 2" IP w/brass cap MKd 35-5-6-531-532
3. The type of location monument is 2' x 2" x 4' Post w/Loc. Notice
The type of corner and end monuments are 2" x 4" x 4' Posts Painted White
4. The bearing and distance between the corners of the claim are beginning at the SW corner of the claim, 600 feet in a N28°45'E direction to the NW corner, then 450 feet in a S65°E direction to the NE corner, then 610 feet in a South direction to the SE corner, then N65°W 700' direction to the point of beginning.

MAP

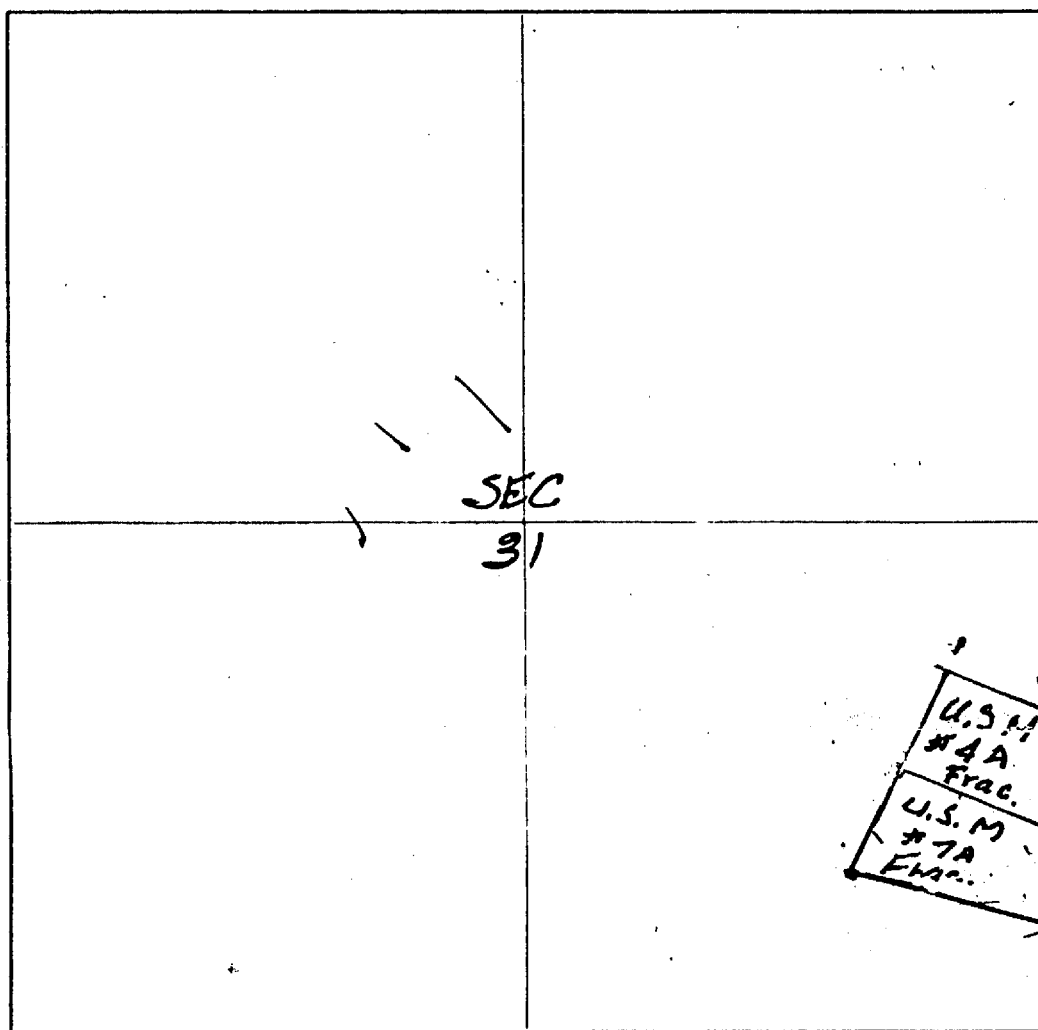
One inch = One thousand feet

North Arrow



ONE MILE

ONE MILE



640 ACRES

Section 31 Range 20W Township 20N G&SRB&M

Date May 18, 1983 United Southern Mines Inc.
by George B. McDevitt
BOOK 930 PAGE 262 Signature Agent

MAP OF MINING CLAIM LOCATION

1. The name of the claim is U.S.M. #4
2. The S.W corner of the claim is 1380 feet in a 516°30'N direction to a survey monument or permanent natural object described as 1" IP w/ brass cap
M&N S-31-36
3. The type of location monument is 2"x2"x4' Post
The type of corner and end monuments are 2"x4"x4' Posts
4. The bearing and distance between the corners of the claim are beginning at the S.W corner of the claim 600 feet in a N25°E direction to the N.W corner, then 1500 feet in a S65°E direction to the S.E corner, then 600 feet in a S25°W direction to the S.E corner, then 1500 feet in a N65°W direction to the point of beginning.

Both End Centrs. are in.

MAP

One inch = One thousand feet

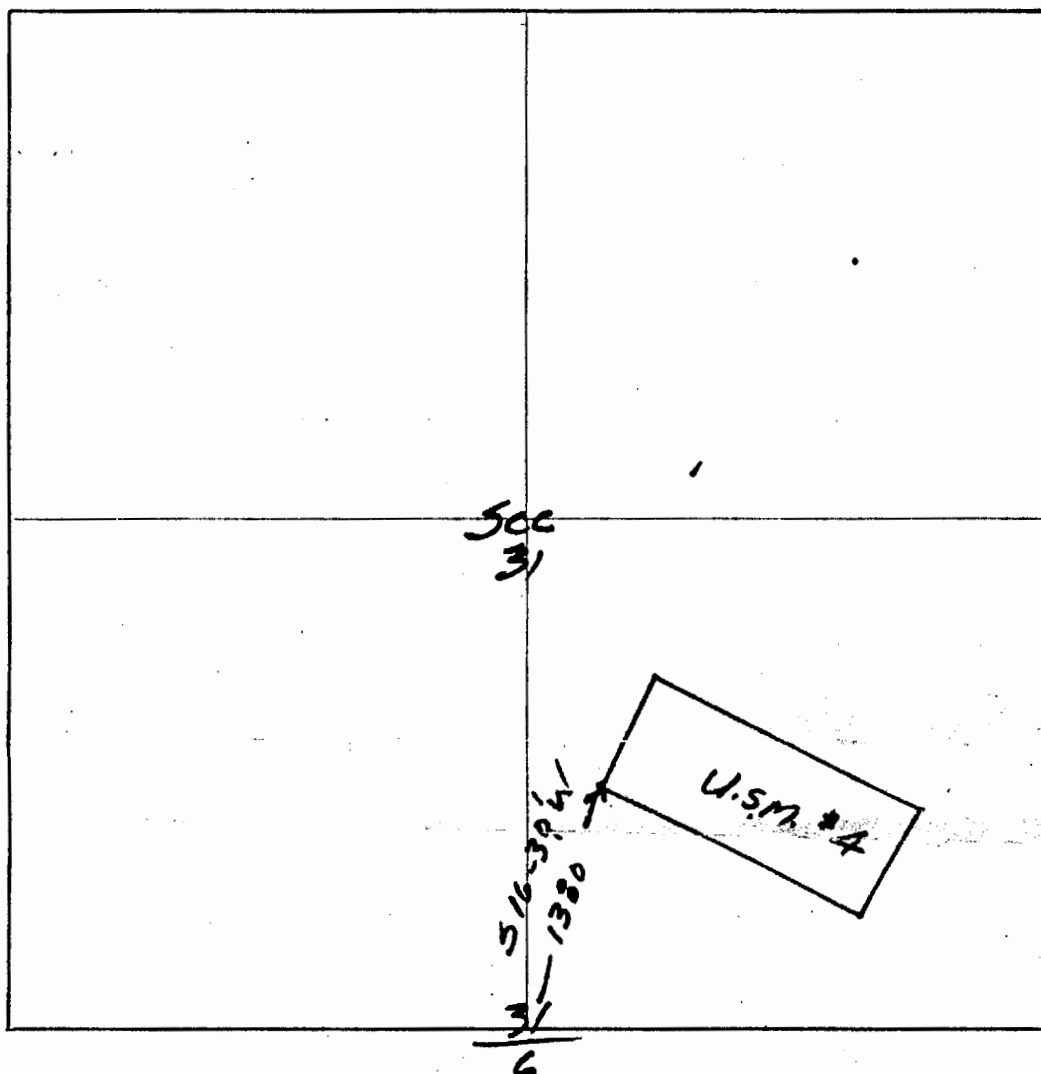
North Arrow



ONE MILE

ONE MILE

640 ACRES



Section 31 Range 20W Township 20N G&SRB&M

Date

Jan 28, 1983 United Southern Mines Inc
by George B. McDevitt
Signature Agent

MAP OF MINING CLAIM LOCATION

1. The name of the claim is U.S.M. #5
2. The S.E. corner of the claim is 1380 feet in a S16°30'W direction to a survey monument or permanent natural object described as 1" IP W/brass Cap
1761 1/4 S 31-56
3. The type of location monument is 2"x2"x4' Post
The type of corner and end monuments are 2"x4"x4' Posts
4. The bearing and distance between the corners of the claim are beginning at the S.E. corner of the claim, 600 feet in a N25°E direction to the N.E. corner, then 1500 feet in a N65°W direction to the N.W. corner, then 600 feet in a S25°W direction to the S.W. corner, then 1500 feet in a S65°E direction to the point of beginning.

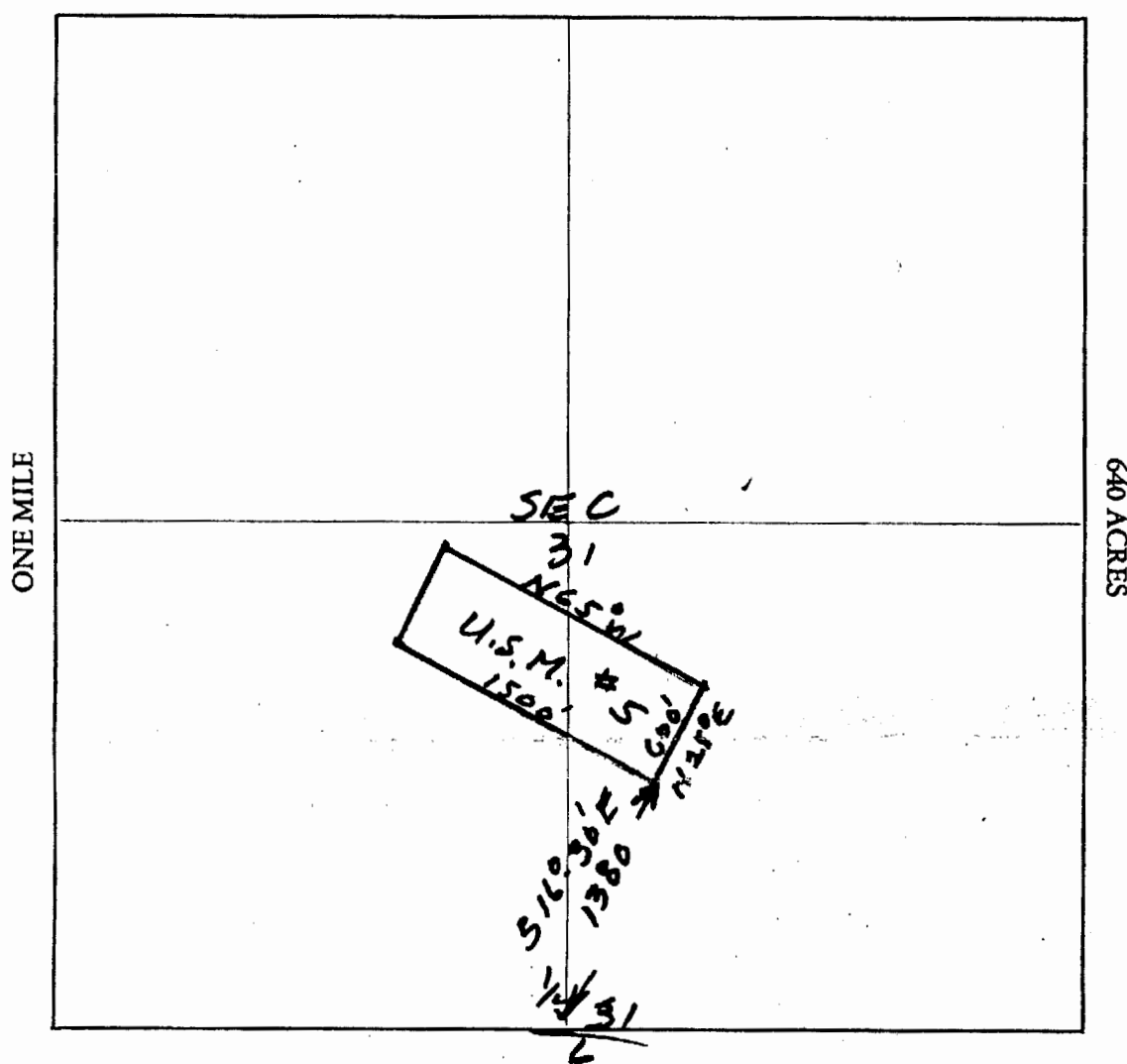
Both End Ctrs. are in
MAP

One inch = One thousand feet

North Arrow



ONE MILE



Section 31 Range 20W Township 20N G&SRB&M

Date Jan. 22, 1983

United Southern Mines Co.
by George B. McDowell
Signature Agent

MAP OF MINING CLAIM LOCATION

1. The name of the claim is U.S.M. #6
2. The N.E. corner of the claim is 1380 feet in a S 16° 13' W direction to a survey monument or permanent natural object described as 1" IP W / Brass Cap
N 4° 1/4 S 6-531
3. The type of location monument is 2" x 2" x 4' Post
The type of corner and end monuments are 2" x 4" x 4' Posts Painted white
4. The bearing and distance between the corners of the claim are beginning at the NE corner of the claim, 600 feet in a S 35° W direction to the S.E. corner, then 1500 feet in a N 65° W direction to the S.W. corner, then 600 feet in a N 25° E direction to the N.W. corner, then 1500 feet in a S 65° E direction to the point of beginning.

Both End Ctrs. are set.

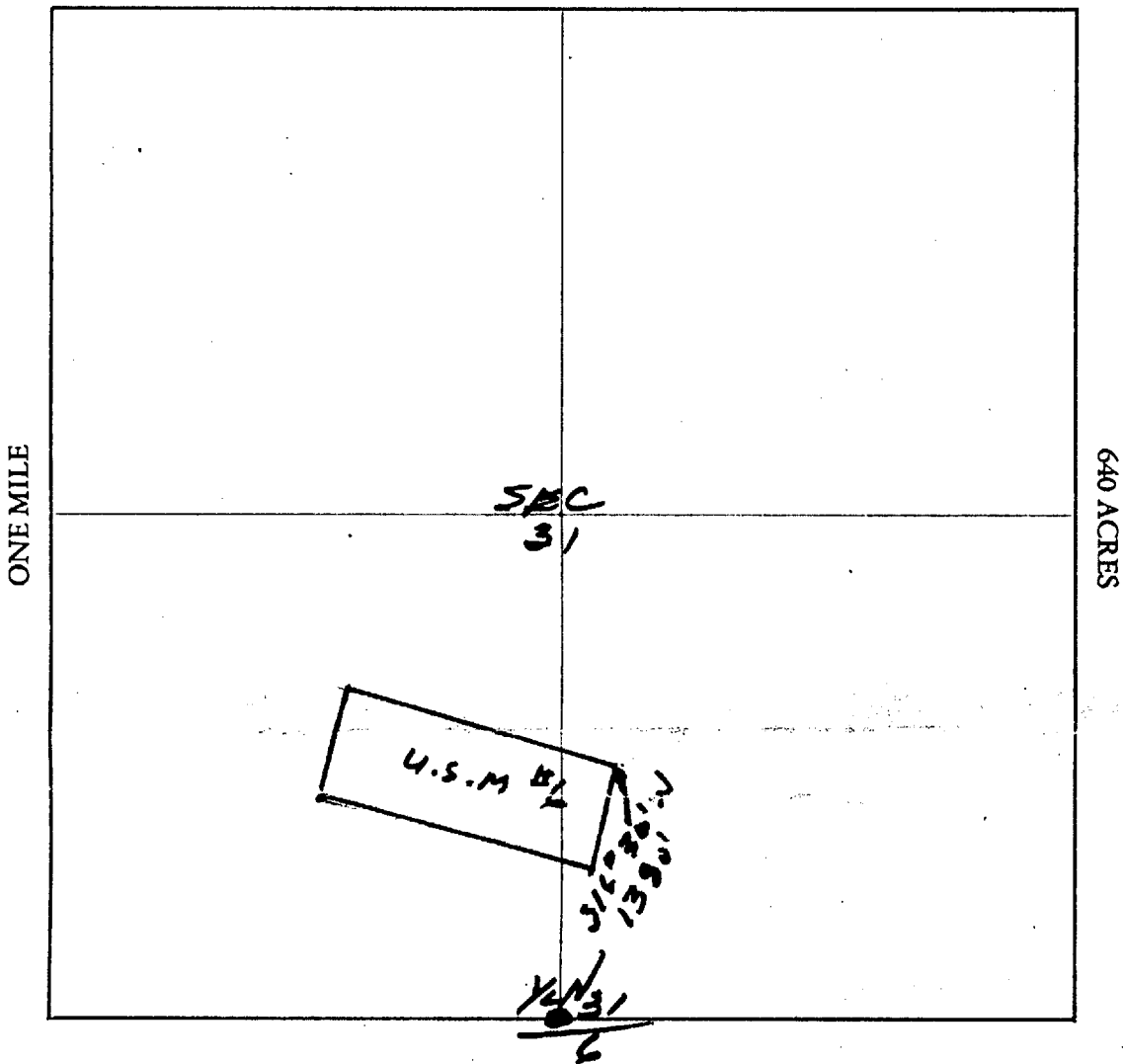
MAP

One inch = One thousand feet

North Arrow



ONE MILE



Section 31 Range 204 Township 204, G&SRB&M

Date Jan 28, 1983 United Southern Mines Inc.
by George B. Miller
Signature Agent

Signature

MAP OF MINING CLAIM LOCATION

1. The name of the claim is U.S.M. #7
2. The N.W. corner of the claim is 1380 feet in a S16°30'W direction to a survey monument or permanent natural object described as 1 1/2" 17kd S-6-31
3. The type of location monument is 2"x2"x4' Post
The type of corner and end monuments are 2"x2"x4' Posts P/white
4. The bearing and distance between the corners of the claim are beginning at the N.W. corner of the claim, 600 feet in a S35°W direction to the S.W. corner, then 1500 feet in a S60°E direction to the S.E. corner, then 600 feet in a N25°E direction to the N.E. corner, then 1500 feet in a N65°W direction to the point of beginning.
both End centers are in

MAP

One inch = One thousand feet

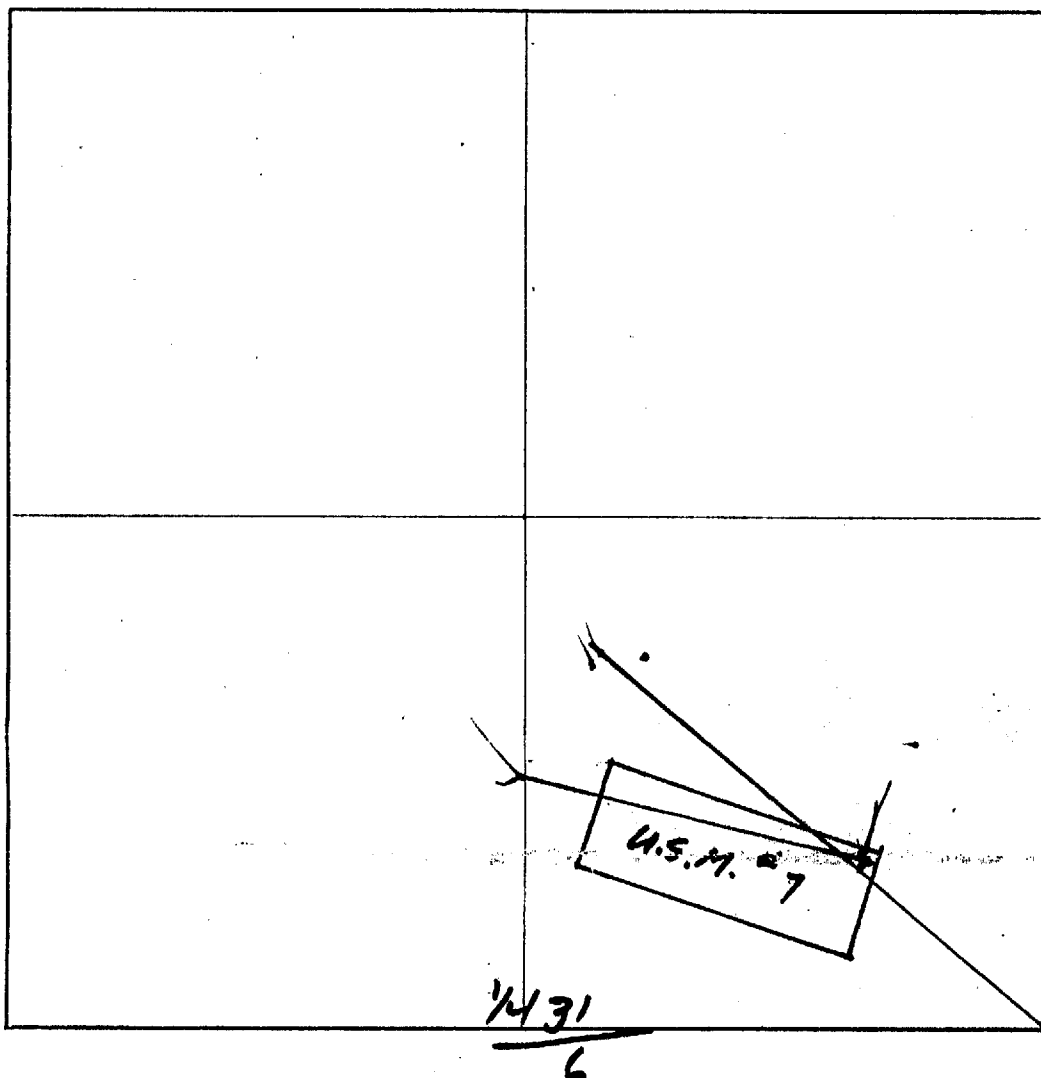
North Arrow



ONE MILE

ONE MILE

640 ACRES



Section 31 Range 20W Township 20N, G&SRB&M

Date Jan 28, 1983

Southern
United Mines Inc
by George B. McElwitt
Signature Agent

MAP OF MINING CLAIM LOCATION

1. The name of the claim is U.S. M # 7A
2. The N.W corner of the claim is 1550 feet in a 528° E direction to a survey monument or permanent natural object described as 2" IP w/brass cap MKA 55-56 231 532
3. The type of location monument is 2"x2"x4' w/Loc. Notice
The type of corner and end monuments are 2"x4"x4' posts Painted White
4. The bearing and distance between the corners of the claim are beginning at the N.W corner of the claim, 600 feet in a 525° W direction to the S.E.W corner, then 1010 feet in a 376° E direction to the S.E corner, then 610 feet in a North direction to the N.E corner, then 760 feet in a N45° W direction to the point of beginning.

End ctrs are in

MAP

One inch = One thousand feet

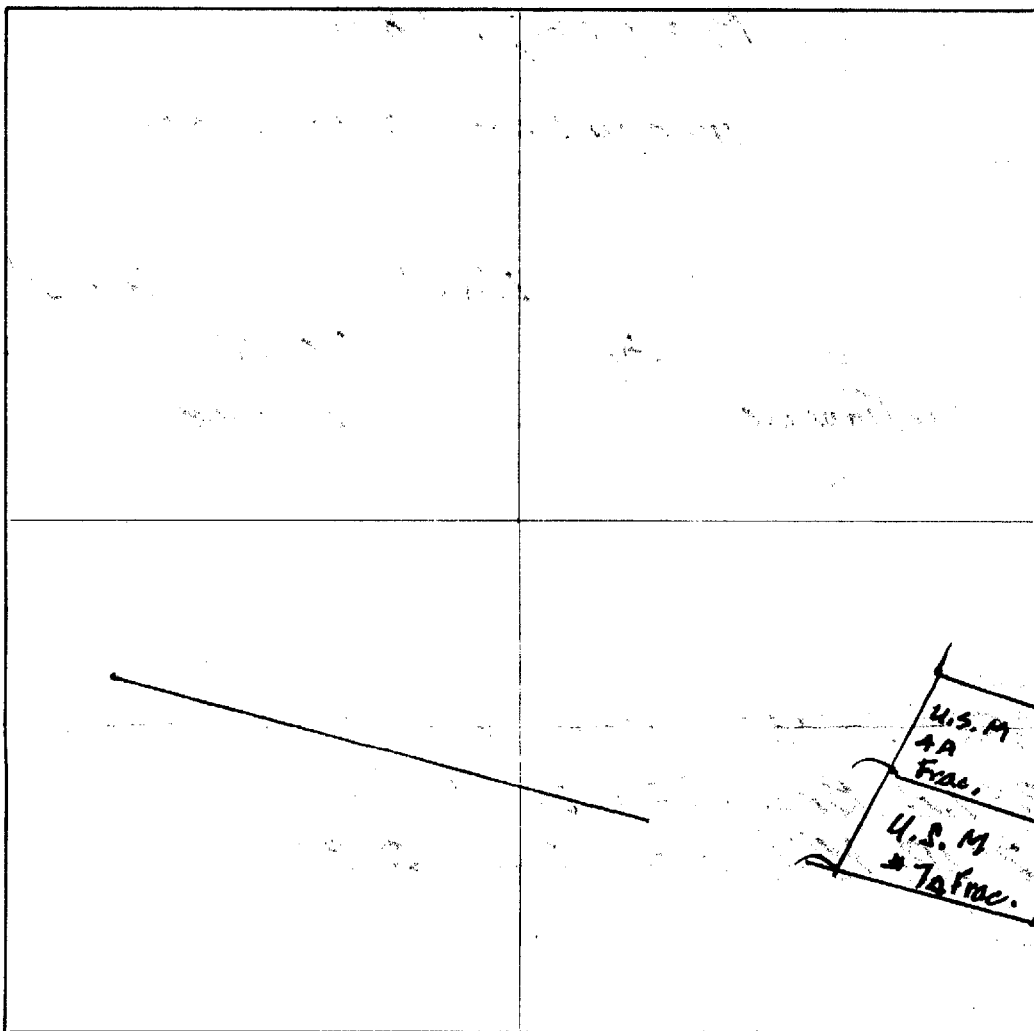
North Arrow



ONE MILE

ONE MILE

640 ACRES



Section 31 Range 20W Township 20N G&SRB&M

Date May 18, 1983

United Southern Mines Inc.
by George P. McDevitt
Signature

BOOK 930 PAGE 264

MAP OF MINING CLAIM LOCATION

1. The name of the claim is U.S.M. #8
2. The SW corner of the claim is 3850 feet in a S35°E direction to a survey monument or permanent natural object described as 2" IP w/ brass cap MKd 531-32-55-6
3. The type of location monument is 2"x2"x4' w/ Loc. Notice
The type of corner and end monuments are 2"x4"x4' Posts Painted White
4. The bearing and distance between the corners of the claim are beginning at the SW corner of the claim, 600 feet in a N25°E direction to the N.W corner, then 1500 feet in a S65°E direction to the N.E. corner, then 600 feet in a S25°W direction to the S.E corner, then 1500 feet in a N65°W direction to the point of beginning.

**Both End Ctrs are in
MAP**

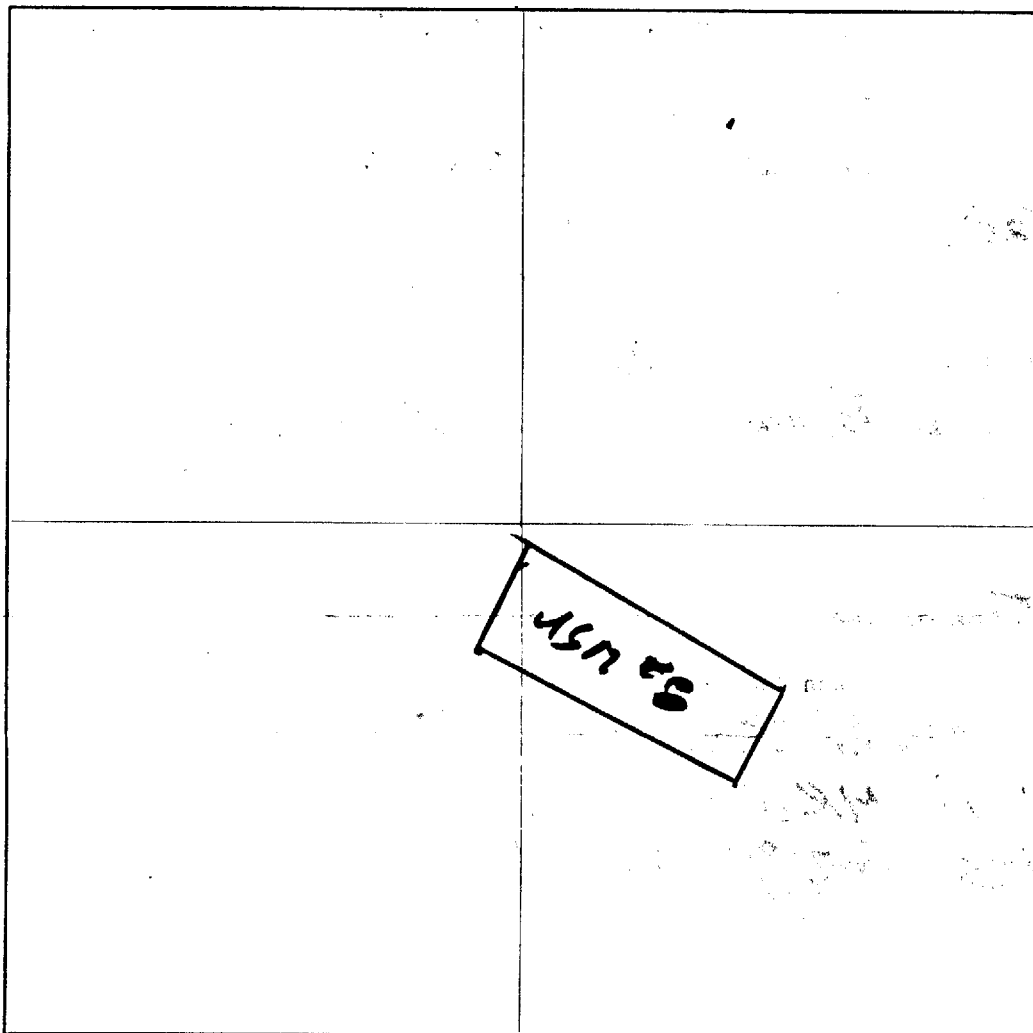
One inch = One thousand feet

North Arrow



ONE MILE

ONE MILE



640 ACRES

Section 31 Range 20 W Township 20 N, G&SRB&M

Date June 14, 1933 United Southern Mines Inc.

George B. Maxwell
Signature

BOOK 935 PAGE 723

Agency

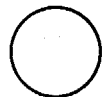
MAP OF MINING CLAIM LOCATION

1. The name of the claim is U.S.M. # 9
2. The N.W. corner of the claim is 860 feet in a S 81° E direction to a survey monument or permanent natural object described as 1" IP w/brass cap M/H 531-532
3. The type of location monument is 2" x 2" x 4' Post w/loc Notice
The type of corner and end monuments are 2" x 2" x 4' Post Painted White
4. The bearing and distance between the corners of the claim are beginning at the N.W. corner of the claim, 950 feet in a S 65° E direction to the N.W.E corner, then 640 feet in a South direction to the S.E corner, then 1250 feet in a N 65° W direction to the S.W corner, then 600 feet in a N 25° E direction to the point of beginning.

End ctns are in.
MAP

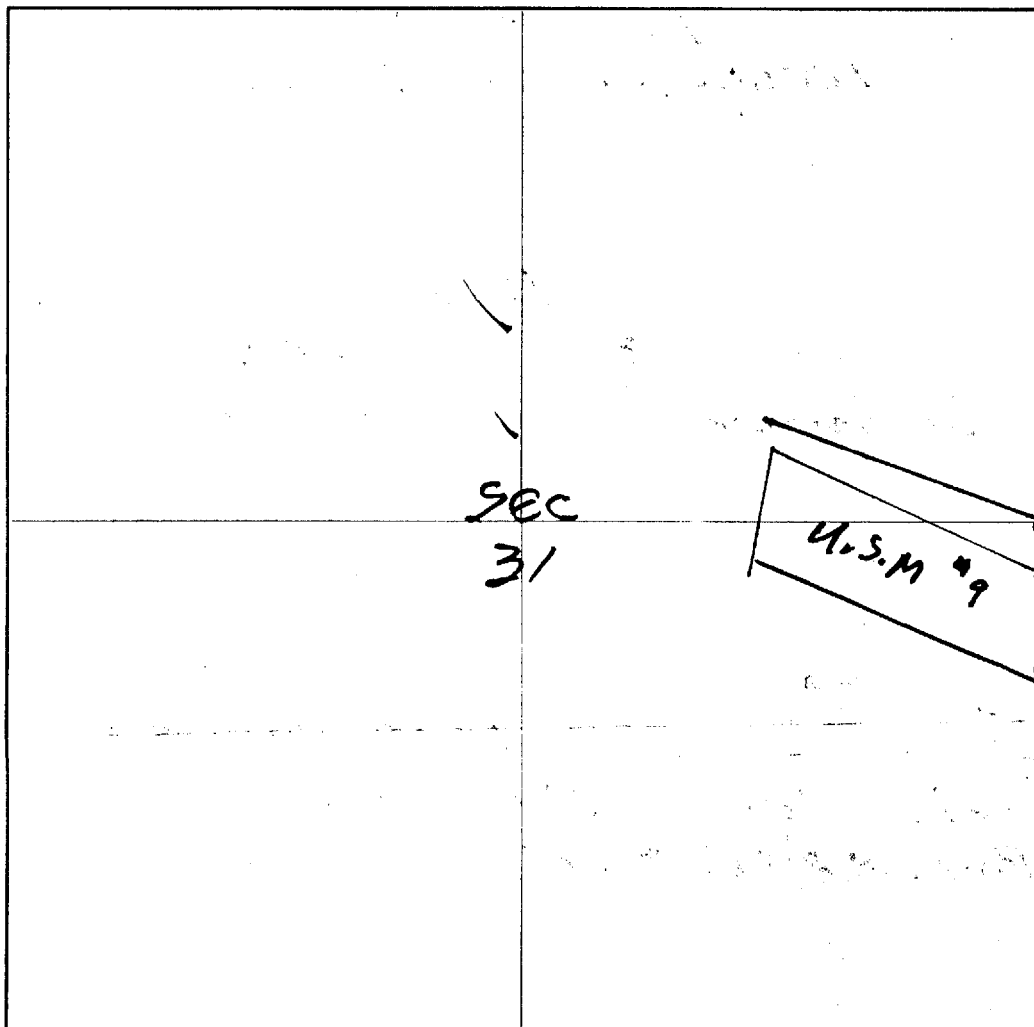
One inch = One thousand feet

North Arrow



ONE MILE

ONE MILE



Section 31 Range 20 W Township 20 N, G&SRB&M

Date May 23 1983 United Southern Mines Inc.
by George B. McNeill
BOOK 930 PAGE 912 Signature

MAP OF MINING CLAIM LOCATION

1. The name of the claim is U.S. 11 #10
2. The N.E. corner of the claim is 1500 feet in a S 15° W direction to a survey monument or permanent natural object described as 1" IP in Md/stone
14/brass cap MRP 1/4 3/6
3. The type of location monument is 3"x2"x4" Post w/loc. Notice
The type of corner and end monuments are 2"x4"x4" Post Painted white
4. The bearing and distance between the corners of the claim are beginning at the N.E. corner of the claim, 1500 feet in a N 65° W direction to the N.W. corner, then 600 feet in a S 25° W direction to the S.W. corner, then 1500 feet in a S 65° E direction to the S.E. corner, then 600 feet in a N 25° E direction to the point of beginning.

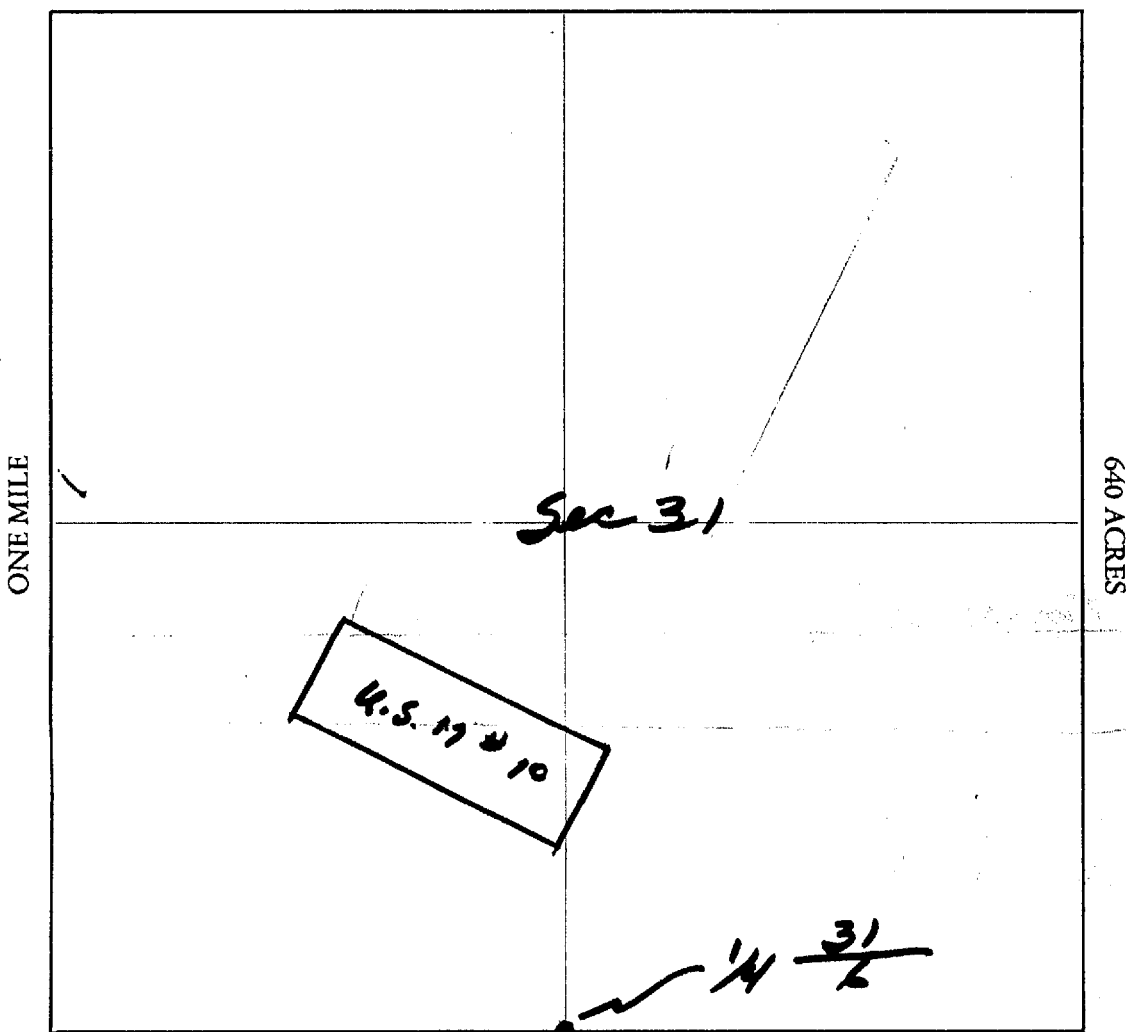
Both End ctrs are set
MAP

One inch = One thousand feet

North Arrow



ONE MILE



Section 31 Range 20W Township 30N, G&SRB&M

Date June 7, 1983

BOOK 934 PAGE 682

United Southern Mines Inc.
by George B. Mawry
Signature: Agent

MAP OF MINING CLAIM LOCATION

1. The name of the claim is U.S.M. # 11
2. The N.W corner of the claim is 1500 feet in a S15°W direction to a survey monument or permanent natural object described as 1" IP in Md/stone w/brass cap Mkd 1/4 31
3. The type of location monument is 2"x2"x4' Post w/loc. Notice
The type of corner and end monuments are 2'x4'x4' Posts Painted White
4. The bearing and distance between the corners of the claim are beginning at the N.W corner of the claim, 600 feet in a S25°W direction to the S.W corner, then 1500 feet in a S65°E direction to the S.E corner, then 600 feet in a N25°E direction to the N.E corner, then 1500 feet in a N65°W direction to the point of beginning.

Both End Ctrs. are Set

MAP

One inch = One thousand feet

North Arrow

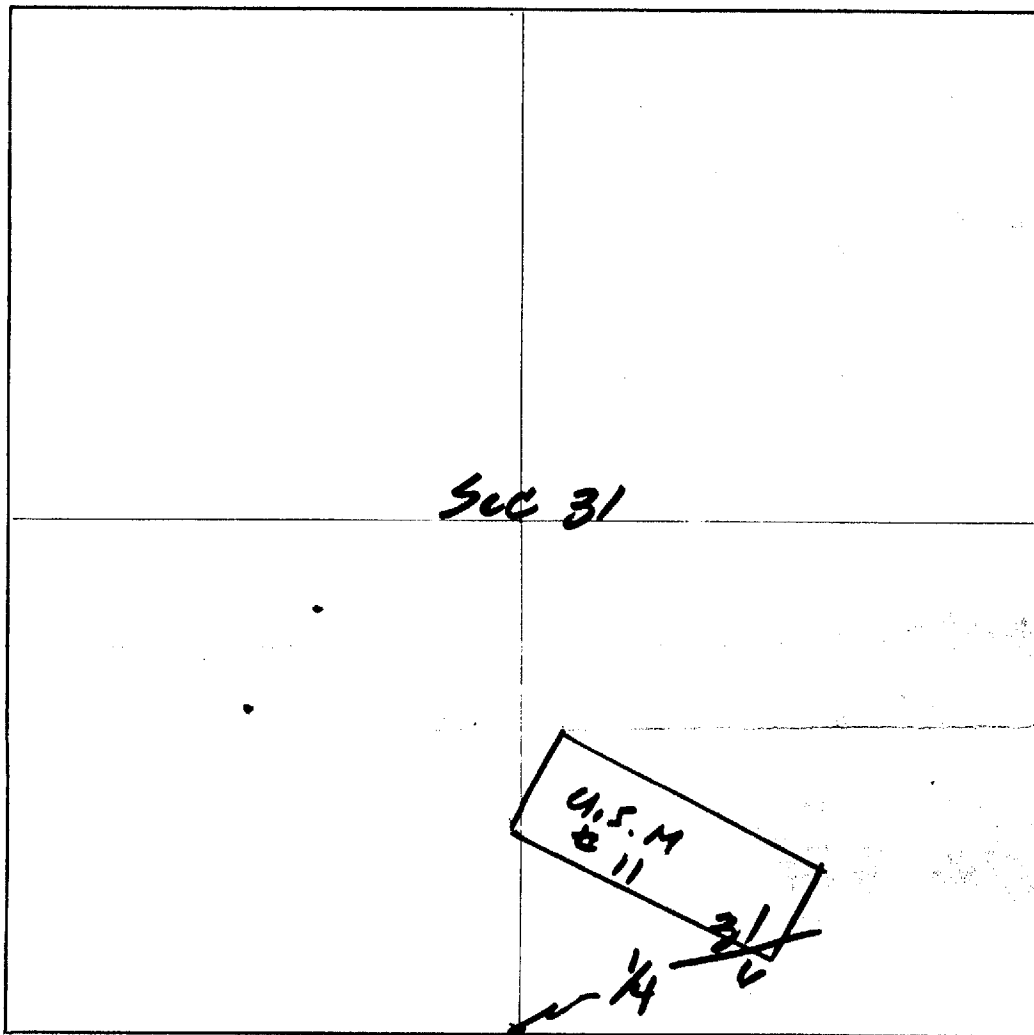


ONE MILE

ONE MILE

640 ACRES

Sec 31



Section 31 Range 20 W Township 20 N G&SRB&M

Date June 7, 1983

BOOK 934 PAGE 684

United Southern Mines Inc
by George B. McSwartz
Signature Agent

MAP OF MINING CLAIM LOCATION

- The name of the claim is U.S.M. #12
- The NE corner of the claim is 910' (Nineteen) feet in a S47°E direction to a survey monument or permanent natural object described as # 1" IP in Md of Stone w/ brass cap MK1 1/4 531-532
- The type of location monument is 2"x2"x4' Post w/ Loc. Notice
The type of corner and end monuments are 2"x2"x4' Post Painted White
- The bearing and distance between the corners of the claim are beginning at the N.E. corner of the claim, 1500 feet in a N65°W direction to the N.W. corner, then 600 feet in a S25°W direction to the S.W. corner, then 1500 feet in a S65°E direction to the S.E. corner, then 600 feet in a N25°E direction to the point of beginning.

Both End ctrs are set

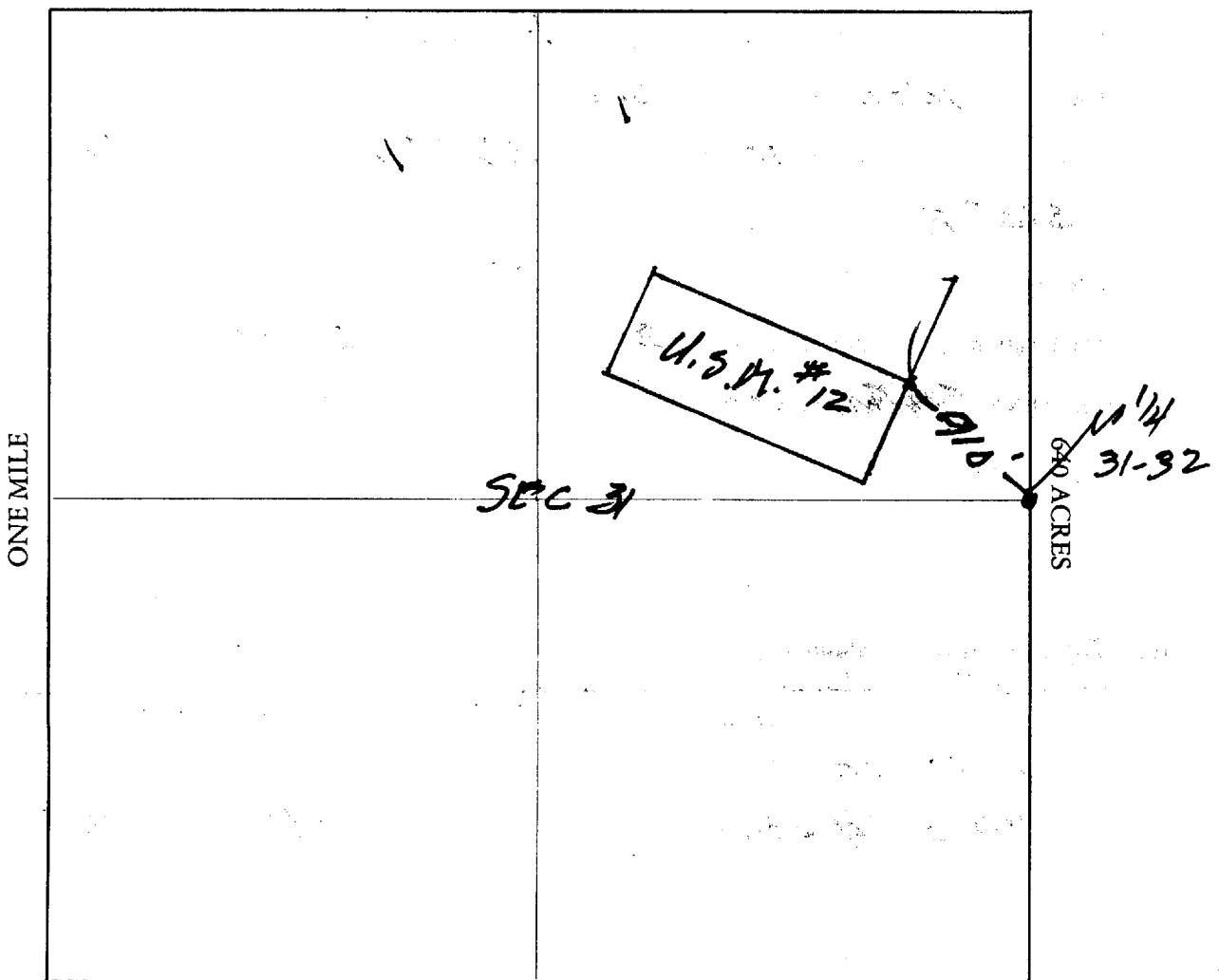
MAP

One inch = One thousand feet

North Arrow



ONE MILE



Section 31 Range 20 W Township 20 N G&SRB&M

Date May 23, 1983

United Southern Mines Inc.
by George B. McDevitt
Agent

BOOK 930 PAGE 914

Signature

MAP OF MINING CLAIM LOCATION

1. The name of the claim is U.S.M. #12A (Fractional claim)
2. The N.W. corner of the claim is 910 feet in a S47°E direction to a survey monument or permanent natural object described as 1" IP MKd S31-S32 in Md Stone w/brass cap
3. The type of location monument is 2"x2"x4' Post w/loc. Notice
The type of corner and end monuments are 2"x4"x9' Posts Painted White
4. The bearing and distance between the corners of the claim are beginning at the NW corner of the claim, 600 feet in a S25°W direction to the S.W. corner, then 950 feet in a S65°E direction to the S.E. corner, then 280' feet in a North direction to the 1/4 Cor 31-32 corner, then 400 feet in a North direction to the N.E. Cor. then N65°E 620' to Pt. of beginning, (End of section)

MAP

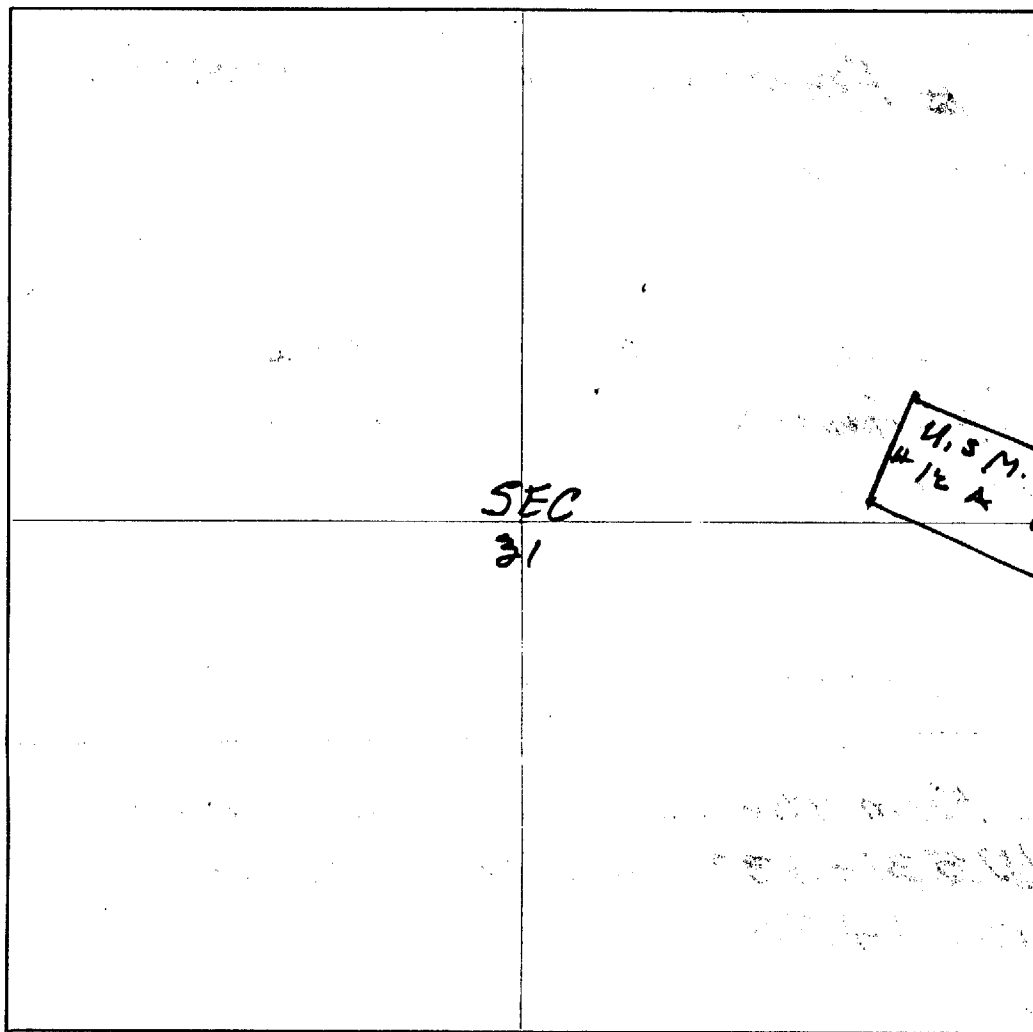
One inch = One thousand feet

North Arrow



ONE MILE

ONE MILE



Section 31 Range 20W Township 20N, G&SRB&M

Date May 23, 1983

BOOK 930 PAGE 916

United Southern Mines Inc.
by George B. McDowell
Signature

MAP OF MINING CLAIM LOCATION

- The name of the claim is U.S. M. #13
- The SE corner of the claim is 910' feet in a S 47° E direction to a survey monument or permanent natural object described as 1" IP MKD 531-532 in M/stone with Brass Cap
- The type of location monument is 2" x 2" x 4' Post w/ Loc. Notice
The type of corner and end monuments are 2" x 4" x 4' Post Painted white
- The bearing and distance between the corners of the claim are beginning at the S. E corner of the claim, 600 feet in a N 25° E direction to the N. E corner, then 1500 feet in a N 65° W direction to the N. W corner, then 600 feet in a S 25° W direction to the S. W corner, then 1500 feet in a S 65° E direction to the point of beginning.

End ctrs are set

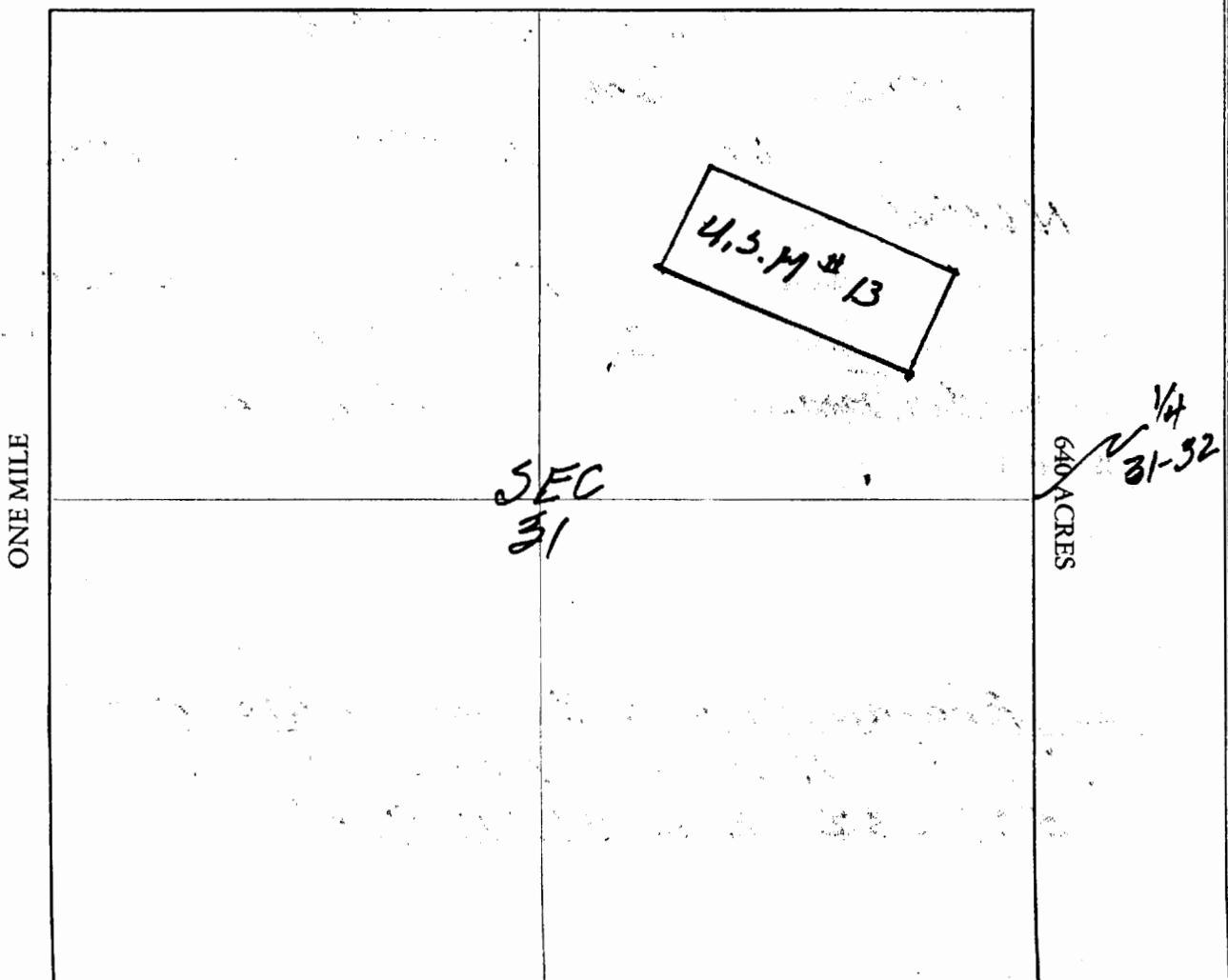
MAP

One inch = One thousand feet

North Arrow



ONE MILE



Section 31 Range 20 W Township 20 N G&SRB&M

Date May 23, 1983
by George B. McDevitt
Signature Agent

MAP OF MINING CLAIM LOCATION

1. The name of the claim is U.S.M. #13A
2. The ~~S.W.~~^S corner of the claim is 910 feet in a S47°E direction to a survey monument or permanent natural object described as 1" IP W/brass Cap MKd 531-532 in Md of Stone
3. The type of location monument is 2"x2"x4' Post w/loc Notice
The type of corner and end monuments are 2"x4"x4' Posts Painted White
4. The bearing and distance between the corners of the claim are beginning at the S.W. corner of the claim, 620 feet in a S65°E direction to the S.E. corner, then 610~~420~~ feet in a North direction to the N.E. corner, then 420 feet in a N65°W direction to the N.W. corner, then 600 feet in a S35°W direction to the point of beginning.

End ctns are set
MAP

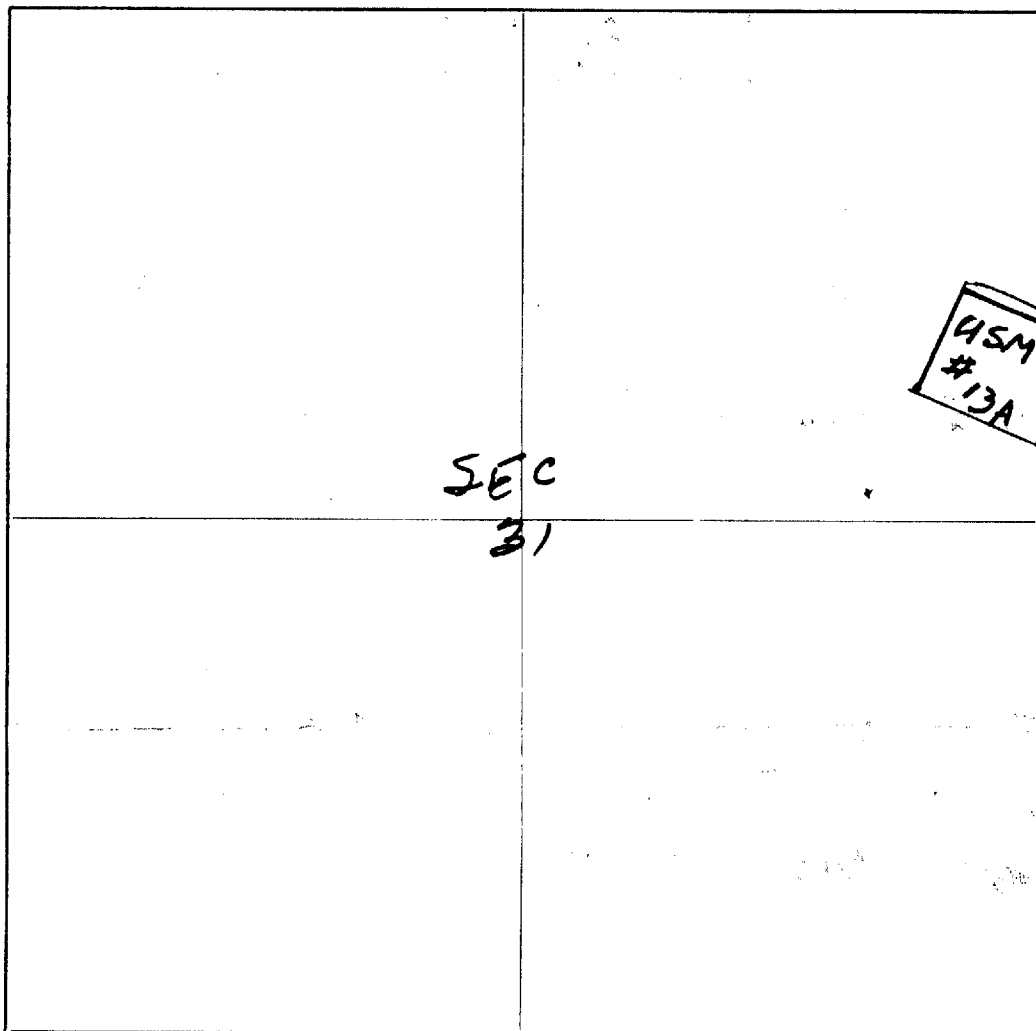
One inch = One thousand feet

North Arrow



ONE MILE

ONE MILE



Section 31 Range 20W Township 20N, G&SRB&M

Date May 23, 1983 United Southern Mines Inc.

BOOK 930 PAGE 920

by George B. M. [Signature]
Agent

MAP OF MINING CLAIM LOCATION

- The name of the claim is U.S.M. #36
- The NW corner of the claim is 2150 feet in a N21°E direction to a survey monument or permanent natural object described as 1" IP W/brass cap
Mkd 1/4 Sec 30
331
- The type of location monument is 2"x2"x4' Post w/koc Notice
The type of corner and end monuments are 2"x4"x4' Posts Painted white
- The bearing and distance between the corners of the claim are beginning at the N.W corner of the claim, 600 feet in a S65°E direction to the N.E corner, then 1500 feet in a S25°W direction to the S.E corner, then 600 feet in a N65°W direction to the S.W corner, then 1500 feet in a N25°E direction to the point of beginning.

Both end centers are set

MAP

One inch = One thousand feet

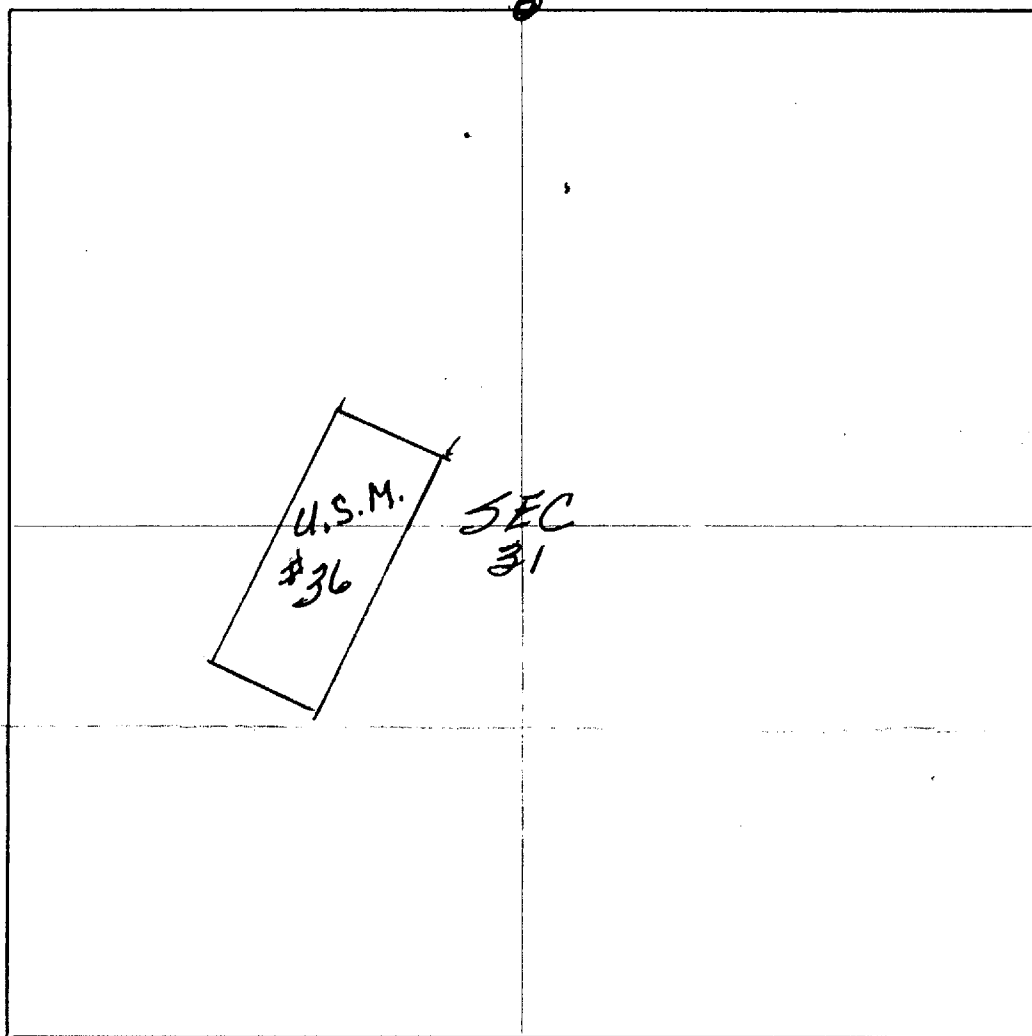
North Arrow



ONE MILE

ONE MILE

640 ACRES



Section 31 Range 20W Township 20N G&SRB&M

Date June 20, 1983 United Southern Mines Inc
BOOK 938 PAGE 426 by George B. McDevitt
Signature Agust

MAP OF MINING CLAIM LOCATION

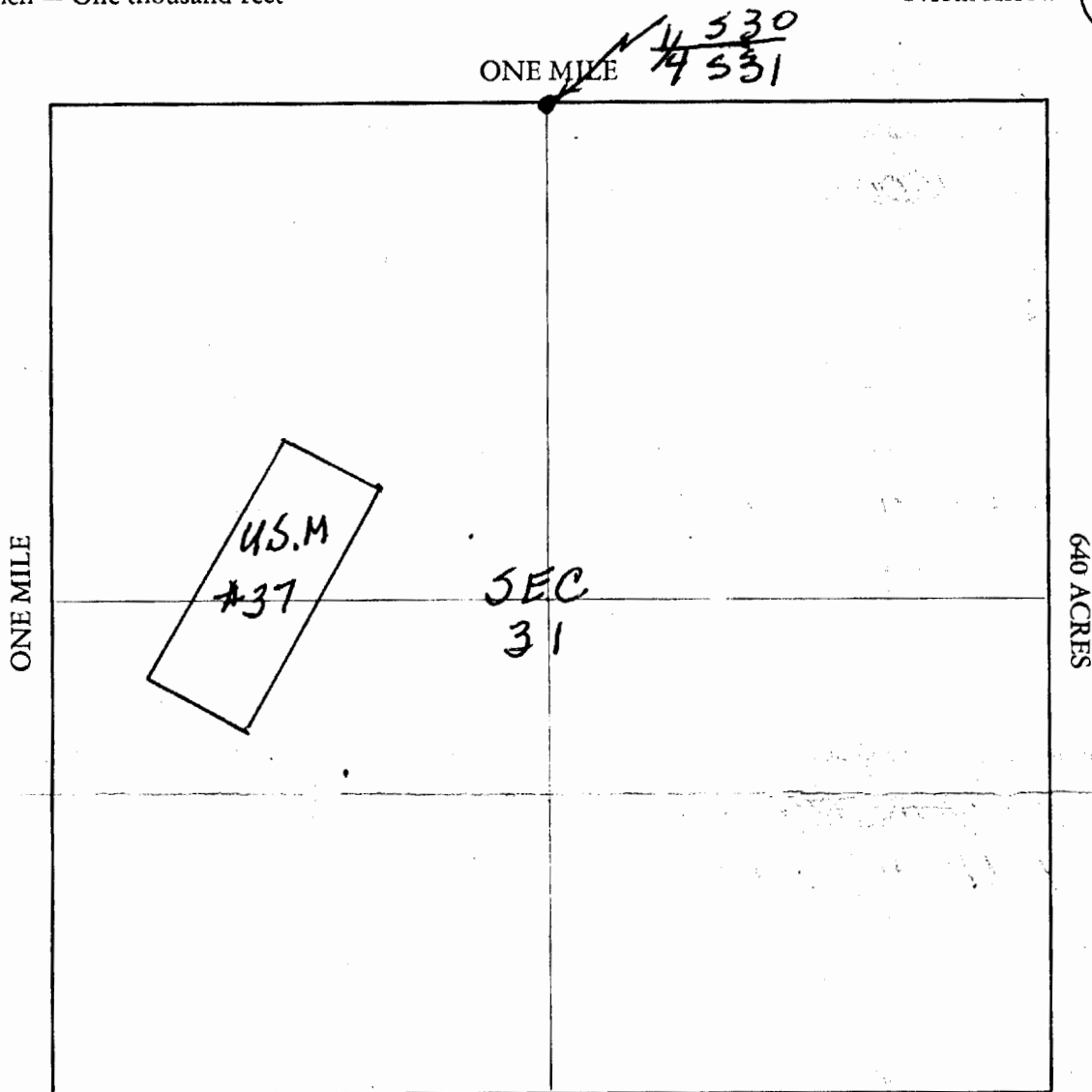
- The name of the claim is U.S.M. # 37
- The N.E. corner of the claim is 2150 feet in a N 21° E direction to a survey monument or permanent natural object described as 1" IP W/brass Cap
Mkd/ 1/4 530
531
- The type of location monument is 2" x 2" x 4' Post
The type of corner and end monuments are 2" x 4" x 4' Posts Painted White
- The bearing and distance between the corners of the claim are beginning at the N.E. corner of the claim, 600 feet in a N 65° W direction to the N.W. corner, then 1500 feet in a S 25° W direction to the S.W. corner, then 600 feet in a S 65° E direction to the S.E. corner, then 1500 feet in a N 25° E direction to the point of beginning.

Both end Centers are set

MAP

One inch = One thousand feet

North Arrow



Section 31 Range 20 W Township 20 N G&SRB&M

Date June 20, 1983

BOOK 938 PAGE 428

United Southern Mines Inc.
by George B. McLevitt
Signature *agent*

MAP OF MINING CLAIM LOCATION

1. The name of the claim is U.S.M. #38
2. The NW corner of the claim is 1625 feet in a N 30° W direction to a survey monument or permanent natural object described as 2" IP w/brass Cap MKd 525-26 & 30-31
3. The type of location monument is 2"x2"x4' Post w/loc. Notice
The type of corner and end monuments are 2"x4"x4' Posts Painted White
4. The bearing and distance between the corners of the claim are beginning at the N.W corner of the claim, 600 feet in a S 65° E direction to the N.E corner, then 1500 feet in a S 15° W direction to the S. E corner, then 600 feet in a N 65° W direction to the S.W. corner, then 1500 feet in a N 25° E direction to the point of beginning.

Both End Ctrs. are set
MAP

One inch = One thousand feet

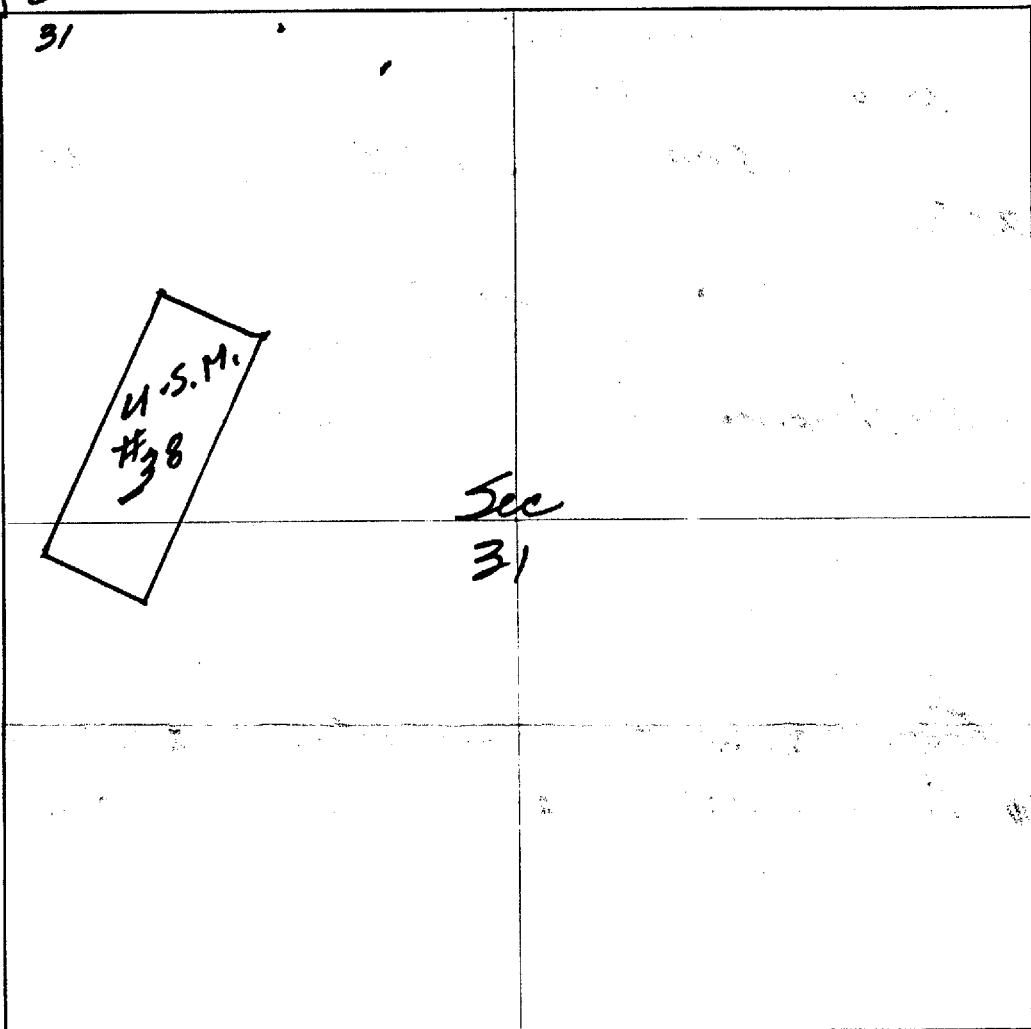
North Arrow



25 | 30
26 | 31

ONE MILE

ONE MILE



640 ACRES

Section 31 Range 20 W Township 20 N, G&SRB&M

Date June 21, 1983 United Southern Mines Inc.
by George B. McDevitt
Signature Agent

BOOK 938 PAGE 841

MAP OF MINING CLAIM LOCATION

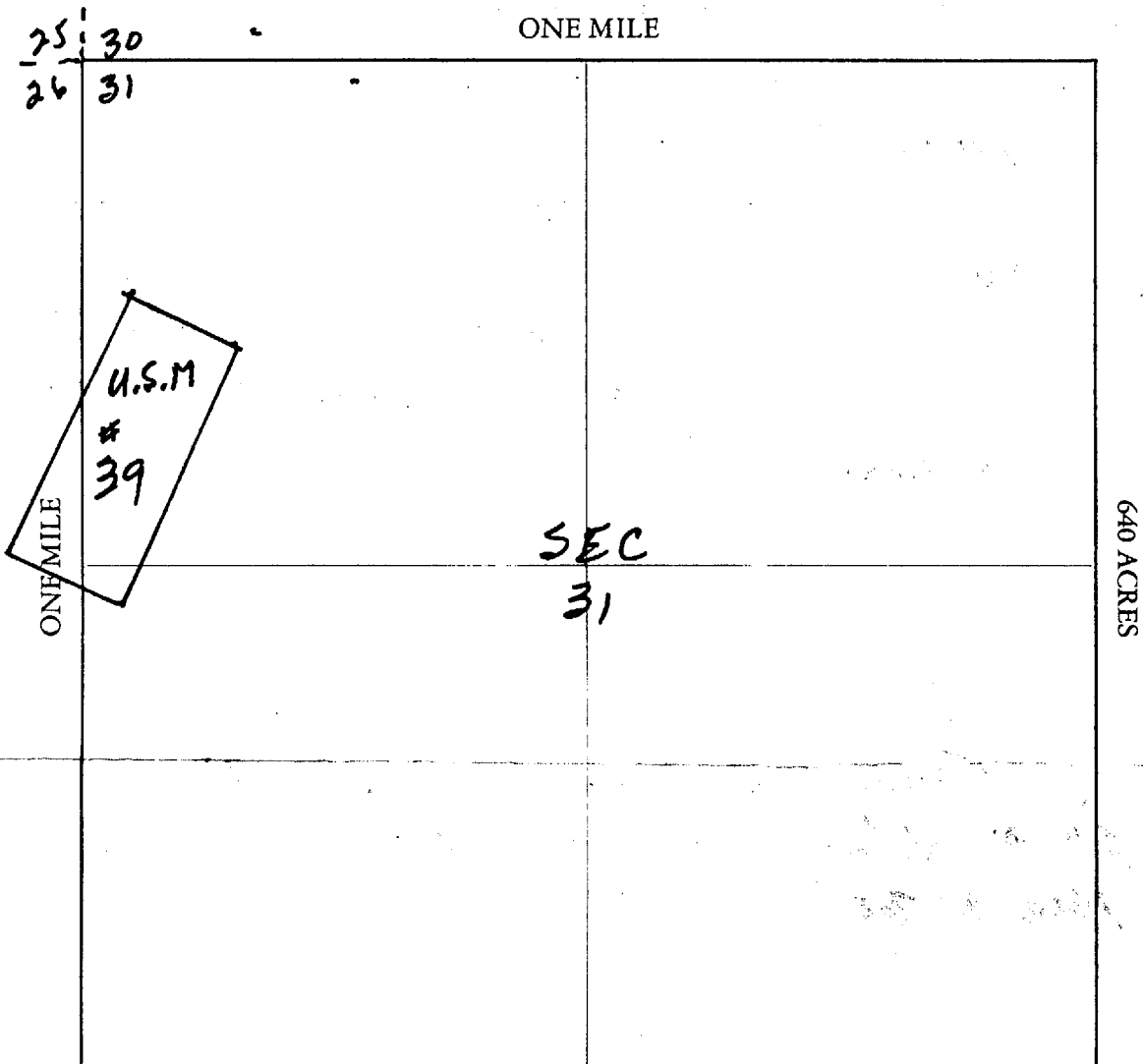
- The name of the claim is U.S.M. #39
- The N.E. corner of the claim is 1625 feet in a N30°W direction to a survey monument or permanent natural object described as 2" IP w/brass Cap MKd 525-26-530-31
- The type of location monument is 2"x2"x4' Post w/Loc. Notice
The type of corner and end monuments are 2"x4"x4' Posts Painted White
- The bearing and distance between the corners of the claim are beginning at the N.E. corner of the claim, 600 feet in a N65°E direction to the N.W. corner, then 1500 feet in a S25° direction to the S.W. corner, then 600 feet in a S65°E direction to the S.E. corner, then 1500 feet in a N25°E direction to the point of beginning.

Both End Ctrs. are set

MAP

One inch = One thousand feet

North Arrow



Section 26 26-31 Range 21W-20W Township 20N, G&SRB&M

Date June 21, 1983 United Southern Mines Inc.
by George B. Malivits
Signature

MAP OF MINING CLAIM LOCATION

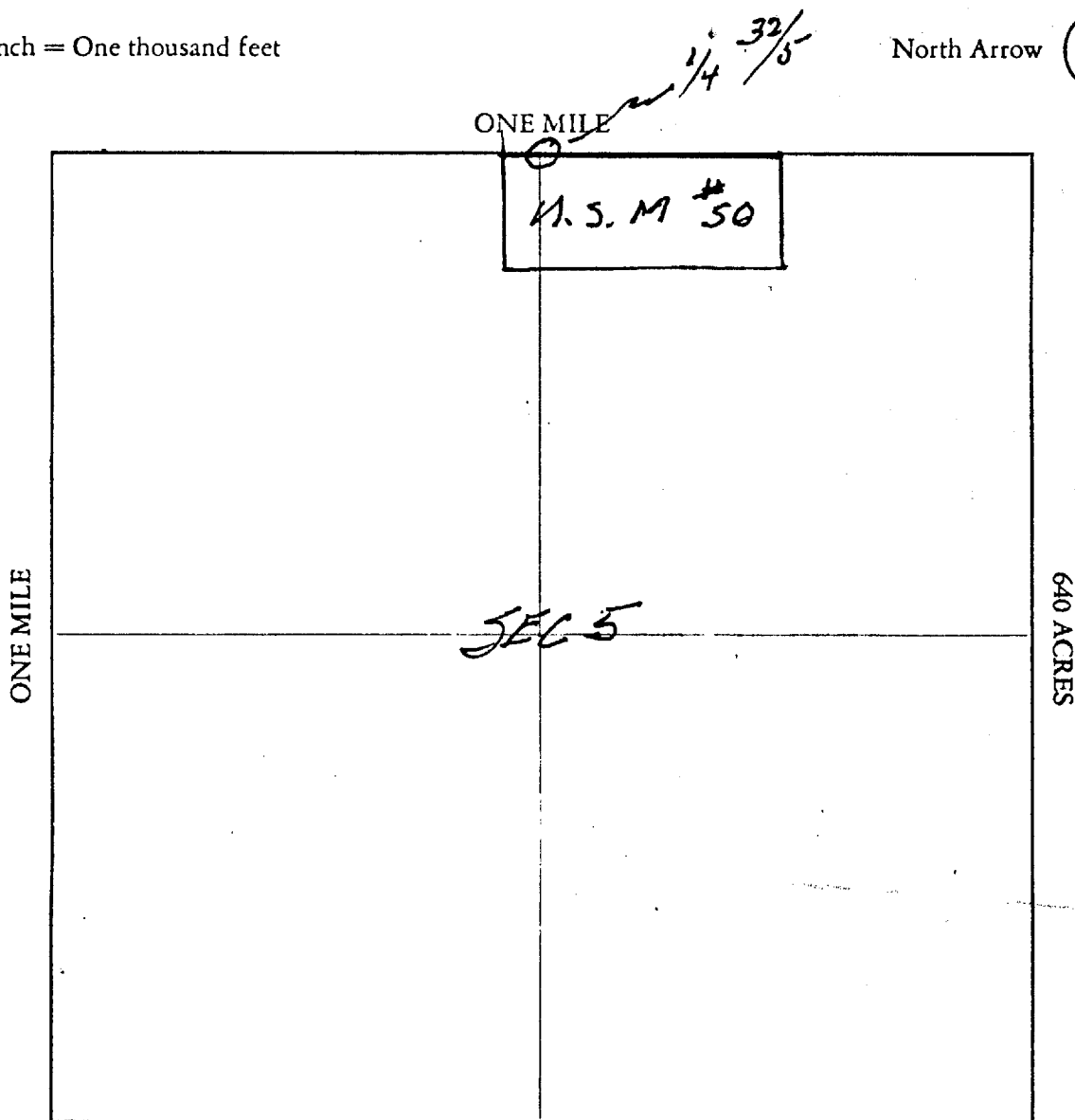
1. The name of the claim is U.S. M. #50
2. The NW corner of the claim is 250 feet in a East direction to a survey monument or permanent natural object described as 1" IP w/brass cap MKol 1/4 532/55 U.S. G.L.O Survey 1914
3. The type of location monument is 2"x2"x4' Post w/loc. Notice
The type of corner and end monuments are 2"x4"x4' Posts Painted White
4. The bearing and distance between the corners of the claim are beginning at the NW corner of the claim, 600 feet in a South direction to the S.W. corner, then 1500 feet in a East direction to the S.E. corner, then 600 feet in a North direction to the N.E. corner, then 1500 feet in a West direction to the point of beginning.

Both End Center Posts are in

MAP

One inch = One thousand feet

North Arrow



Section 5 Range 20W Township 19N G&SRB&M

Date May 13 1983

BOOK 928 PAGE 948

United Southern Mines Inc.
by George B. McDevitt

Signature

MAP OF MINING CLAIM LOCATION

1. The name of the claim is U.S.M. #53
2. The S.E corner of the claim is 3050 feet in a 533°W direction to a survey monument or permanent natural object described as 2" IP w/ brass cap M/d S-25-26-35-36
3. The type of location monument is 2' x 2' x 4' Post w/ Loc. Notice
The type of corner and end monuments are 2' x 4' x 4' Post Painted white
4. The bearing and distance between the corners of the claim are beginning at the S.E corner of the claim, 1500 feet in a N 25° E direction to the N.E corner, then 600 feet in a N 65° W direction to the N.W corner, then 1500 feet in a S 25° W direction to the S.W corner, then 600 feet in a S 65° E direction to the point of beginning.

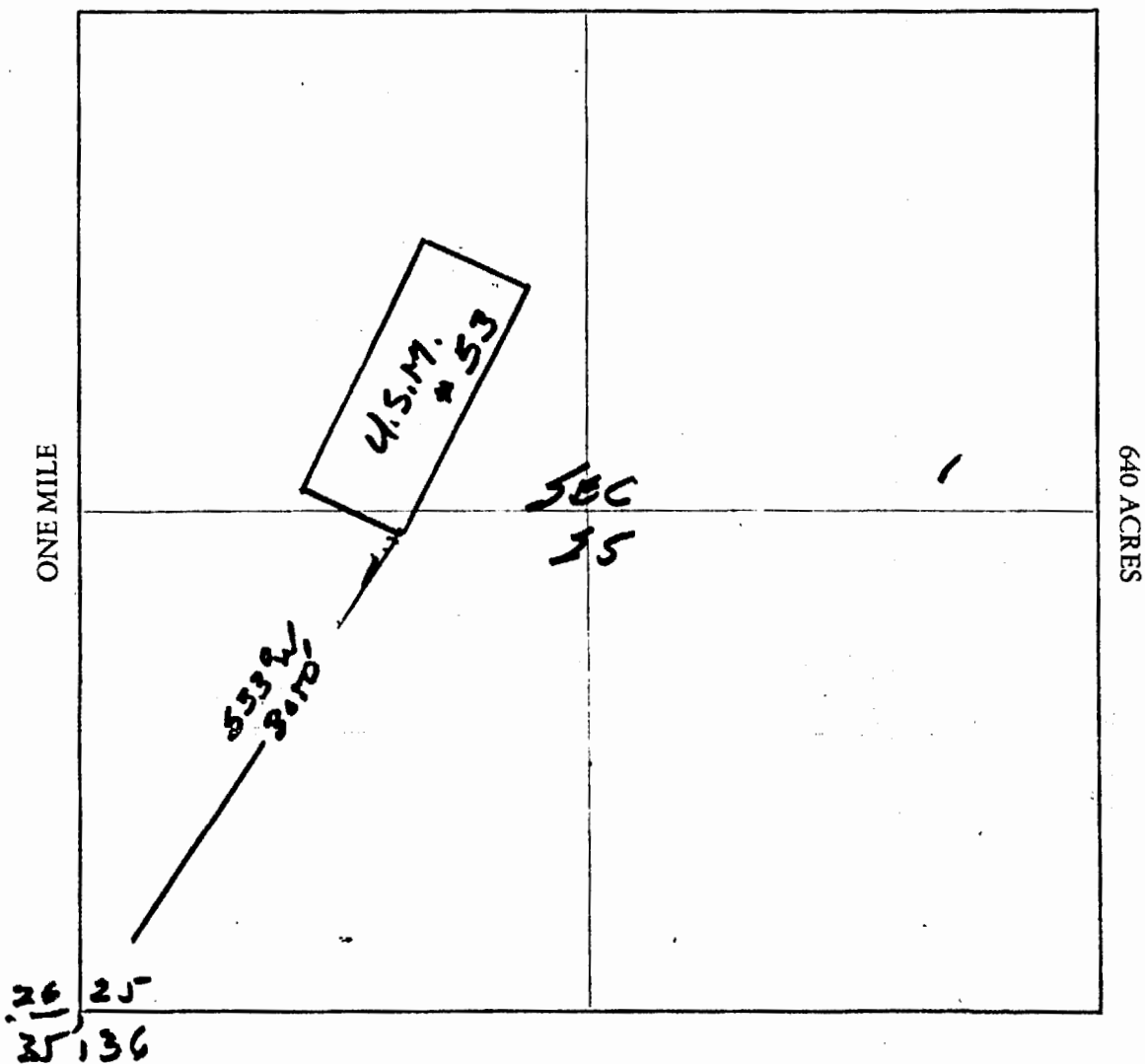
Both end ctrs are in
MAP

One inch = One thousand feet

North Arrow



ONE MILE



Section 25 Range 21 W Township 20 N G&SRB&M

Date June 2, 1983

BOOK 933 PAGE 459

United Southern Mines Inc.
by George B. McDewitt
Signature Agent

MAP OF MINING CLAIM LOCATION

1. The name of the claim is U.S. M #54
2. The S. W corner of the claim is 3050 feet in a S 33° E direction to a survey monument or permanent natural object described as 2" IP W/brass cap MKd S. 25, 26, 35, 36
3. The type of location monument is 2" x 2' x 4' Post w/loc. Notice
The type of corner and end monuments are 2" x 4" x 4' Post Painted White
4. The bearing and distance between the corners of the claim are beginning at the S. W corner of the claim, 600 feet in a S 65° E direction to the S. E corner, then 1500 feet in a N 25° E direction to the N. E corner, then 600 feet in a N 65° W direction to the N. W corner, then 1500 feet in a S 25° W direction to the point of beginning.

Both Ends Ctrs were set.

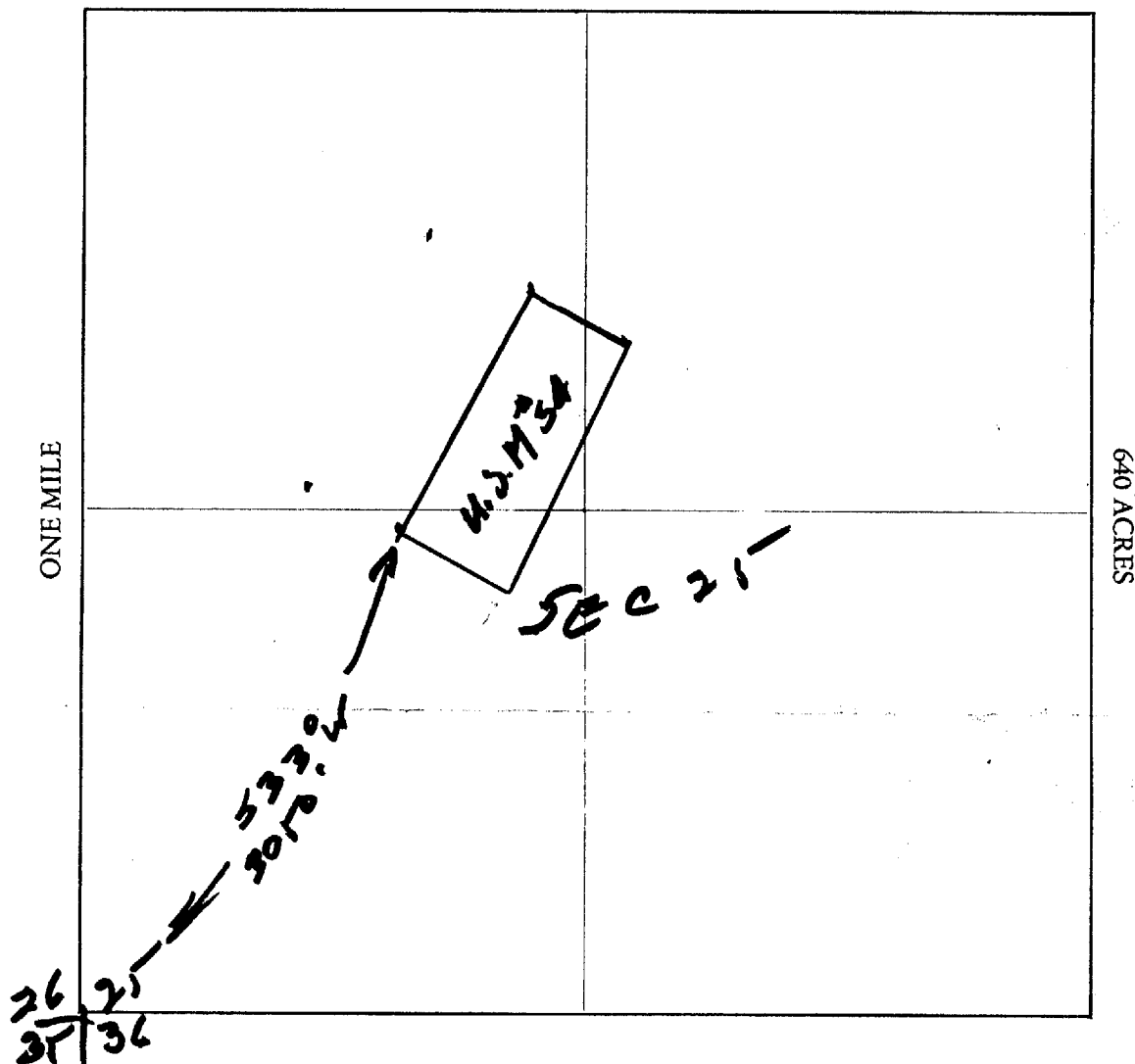
MAP

One inch = One thousand feet

North Arrow



ONE MILE



Section 25 Range 2144 Township 20 N G&SRB&M

Date June 2, 1983

BOOK 933 PAGE 461

United Southern Mines Inc
by George B. Mallory
Signature Agent

MAP OF MINING CLAIM LOCATION

- The name of the claim is U.S. M. #55
- The SE corner of the claim is 3480 feet in a 554°30'W direction to a survey monument or permanent natural object described as 2" I.P. w/brass Cap MKd 525, 26, 35, 36 (3480')
- The type of location monument is 2"x2"x4' Post w/loc. Notice
The type of corner and end monuments are 2"x4"x4' Posts Painted White
- The bearing and distance between the corners of the claim are beginning at the SE corner of the claim, 000 feet in a N65°W direction to the SW corner, then 1500 feet in a N25°E direction to the N.W corner, then 600 feet in a S65°E direction to the N.E corner, then 1500 feet in a S25°W direction to the point of beginning.

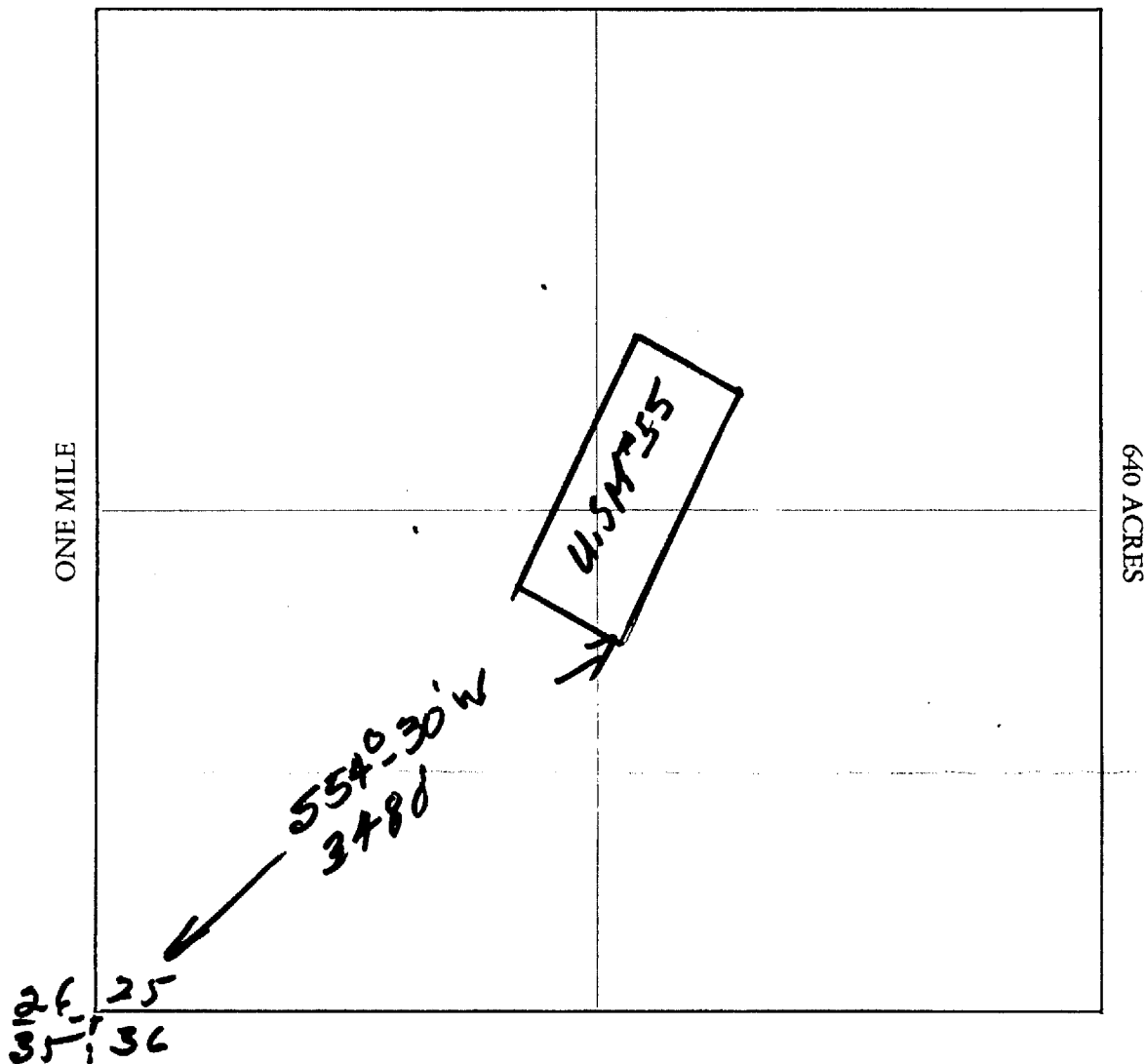
Both end ctn are set
MAP

One inch = One thousand feet

North Arrow



ONE MILE



Section 25 Range 21W Township 20N G&SRB&M

Date June 2, 1983

BOOK 933 PAGE 463

United Southern Mines Inc.
Ken George B. McDevitt
Signature Agent

MAP OF MINING CLAIM LOCATION

1. The name of the claim is U.S.M. # 56
2. The SW corner of the claim is 3480 feet in a 554°30'W direction to a survey monument or permanent natural object described as 2" W/61255 Cof
MPL 535-26 535-36
3. The type of location monument is 2x2"x4' post w/loc. Notice
The type of corner and end monuments are 2"x4"x4' post painted white
4. The bearing and distance between the corners of the claim are beginning at the S.W corner of the claim, 600 feet in a 565°E direction to the SE corner, then 1500 feet in a N85°E direction to the N.E corner, then 600 feet in a N65°W direction to the N.W corner, then 1500 feet in a 325°W direction to the point of beginning.
Both End ctrs are set

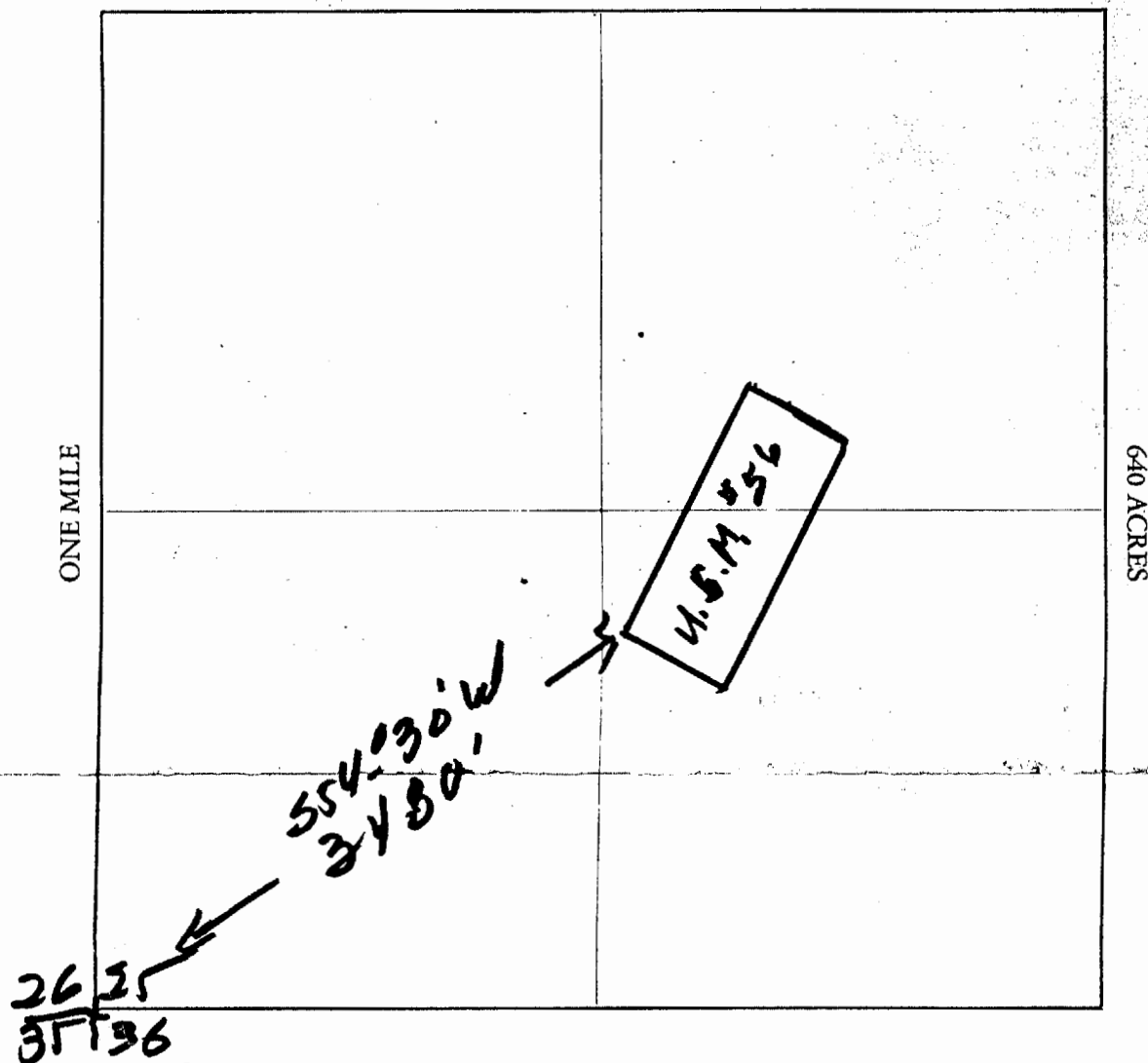
MAP

One inch = One thousand feet

North Arrow



ONE MILE



Section 25 Range 21 W Township 20 N, G&SRB&M

Date June 2, 1983 United Southern Mine Sec
by George E. McPherson



REYNOLDS METALS EXPLORATION, INC.

Reynolds Metals Company • 5301 Longley Lane • Suite 157 • Reno, Nevada 89511-1805
Telephone (702)829-8018 • Facsimile (702)829-8026

June 2, 1992

Mr. Murray Moxley, President
Black Wonder Mines, Inc.
P.O. Box 1914
Ferndale, WA 98248

RE: Black Wonder Area Exploration Summary for the Second Quarter of 1992

Dear Mr. Moxley:

As stipulated in the agreement between Black Wonder Mines, Inc. and Reynolds Metals Exploration, Inc., I am providing a brief summary of Reynolds' exploration activities on the Black Wonder property, which is located in Mohave County, Arizona. Be advised that Reynolds Metals Exploration, Inc. disclaims responsibility for accuracy of all of the information supplied in this report.

Geochemistry

Approximately 128 rock chip samples have been collected along the Black Wonder structure to characterize the extensiveness and degree of gold mineralization in the Black Wonder structure, as well as that of the adjacent quartz-calcite veined hanging wall and footwall. The samples were analyzed for gold "only" by Chemex Labs and the results plotted on a 1"=200' scale map (enclosed).

Geology

Mr. Mike Winston, a contract geologist employed by Reynolds Metals, has geologically mapped the Black Wonder structure in the SE 1/4 Sec. 31 and the extreme southern portion of Sec. 32, T20N, R20W. This mapping emphasized the lithology and structural geology of this portion of the project and is plotted at a scale of 1"=200'. This map is currently being drafted and will be supplied to Black Wonder Mines at a later date.

Drilling

Based on the results of the geochemical sampling and geologic mapping, Mr. Mike Winston prepared a drilling program that would test the Black Wonder structure. This plan was submitted and approved by the Bureau of Land Management in Kingman, Arizona and the Arizona Department of Water Resources in Phoenix.

Hackworth Drilling Company, headquartered in Elko, Nevada, was awarded the Black Wonder property drilling contract. Reverse circulation drilling utilizing a track-mounted Schramm C-560 drill rig, was initiated on May 5, 1992 and completed on May 29, 1992. During this program, 15 holes totaling 5380 feet, were completed. A summary of this drilling program is shown below.

<u>Hole #</u>	<u>Inclination in Degrees</u>	<u>Bearing</u>	<u>T.D.</u>
BW92-1	-50	S12°W	390'
BW92-2	-50	South	400'
BW92-3	Vertical	-	400'
BW92-4	-50	S 5°W	175'
BW92-5	-50	S 8°W	300'
BW92-6	Vertical	-	400'
BW92-7	-50	S 8°W	500'
BW92-8	-50	S 5°E	400'
BW92-9	-50	S20°W	400'
BW92-10	Vertical	-	370'
BW92-11	-50	S25°W	295'
BW92-12	-60	S30°W	300'
BW92-13	-60	S32°W	300'
BW92-14	-50	S 4°E	350'
BW92-15	-75	S12°W	400'

Although analytical work is in progress, the assay results for BW92-1 through BW92-12 have been received and are summarized below.

BW92-1

115'-150':35'-.038
 165'-175':10'-.012
 255'-265':10'-.013

BW92-2

150'-165':15'-.032

BW92-3

No significant mineralization

BW92-4

No significant mineralization

BW92-5

80'- 85': 5'-.20
 90' 95': 5'-.010
 100'-120':20'-.021
 125'-130': 5'-.016
 260'-270':10'-.073

BW92-6

160'-165': 5'-.014
 195'-200': 5'-.011
 235'-240': 5'-.010
 245'-290':45'-.042
 300'-345':45'-.030

BW92-7

355'-360': 5'-.011
 365'-370': 5'-.012
 380'-385': 5'-.011
 420'-435': 15'-.024

BW92-9

150'-155': 5'-.011
 190'-195': 5'-.011
 200'-205': 5'-.013
 275'-280': 5'-.011
 320'-325': 5'-.010
 390'-395': 5'-.010

BW92-11

200'-205': 5'-.035
 210'-225': 15'-.012

BW92-8

160'-180': 20'-.012
 185'-225': 40'-.019
 235'-240': 5'-.012
 260'-275': 15'-.016
 280'-325': 45'-.020
 335'-340': 5'-.013
 350'-355': 5'-.013
 360'-365': 5'-.012

BW92-10

215'-225': 10'-.016
 235'-280': 45'-.037
 285'-290': 5'-.011
 300'-305': 5'-.011
 350'-360': 10'-.017

BW92-12

No Significant Mineralization

I hope that this information will be useful. Should you have any questions, please don't hesitate contacting me.

Sincerely,



Raymond Irwin
 Regional Exploration Manager



REYNOLDS METALS EXPLORATION, INC.

Reynolds Metals Company • 5301 Longley Lane • Suite 157 • Reno, Nevada 89511-1805
Telephone (702)829-8018 • Facsimile (702)829-8026

March 19, 1992

Mr. Walter Francis
P.O. Box 1928
Riviera, AZ 86442

Dear Mr. Francis:

As we discussed in person earlier in March, it would be very convenient for Reynolds to temporarily store drill samples on your property in Sec. 5, T19N, R20W in Mohave County, Arizona.

We plan to drill as soon as all permitting is complete, hopefully in late April to early May. Fifteen to twenty holes are planned over a wide area. This is estimated to take 20 to 30 days to complete. The sample cuttings will be sealed in heavy duty plastic bags and will contain no hazardous liquids or materials.

The roughly 1500 samples will be picked up by Chemex Labs in Tucson in 2 or 3 trips, so that we can get quick turnaround on assays and to avoid overloading their 1 ton truck. This will also assure you of minimal disturbance.

I am enclosing a personal check to you for \$50.00 for your cooperation in this matter and ask you to sign below and return a copy to me so that I can get reimbursed by Reynolds. If you have any questions, please call me in Reno. Otherwise, I shall see you next time I get down there.

Best regards,

A handwritten signature in cursive script that reads 'Mike'.

Michael Winston

RECEIVED BY: _____
Walter Francis

DATE: _____

MICHAEL R. WINSTON
6006 D PLUMAS ST.
RENO, NV 89509

March 19 1992

PAY TO THE
ORDER OF

Walter Francis

\$ 50.⁰⁰

Fifty dollars & no cents

DOLLARS

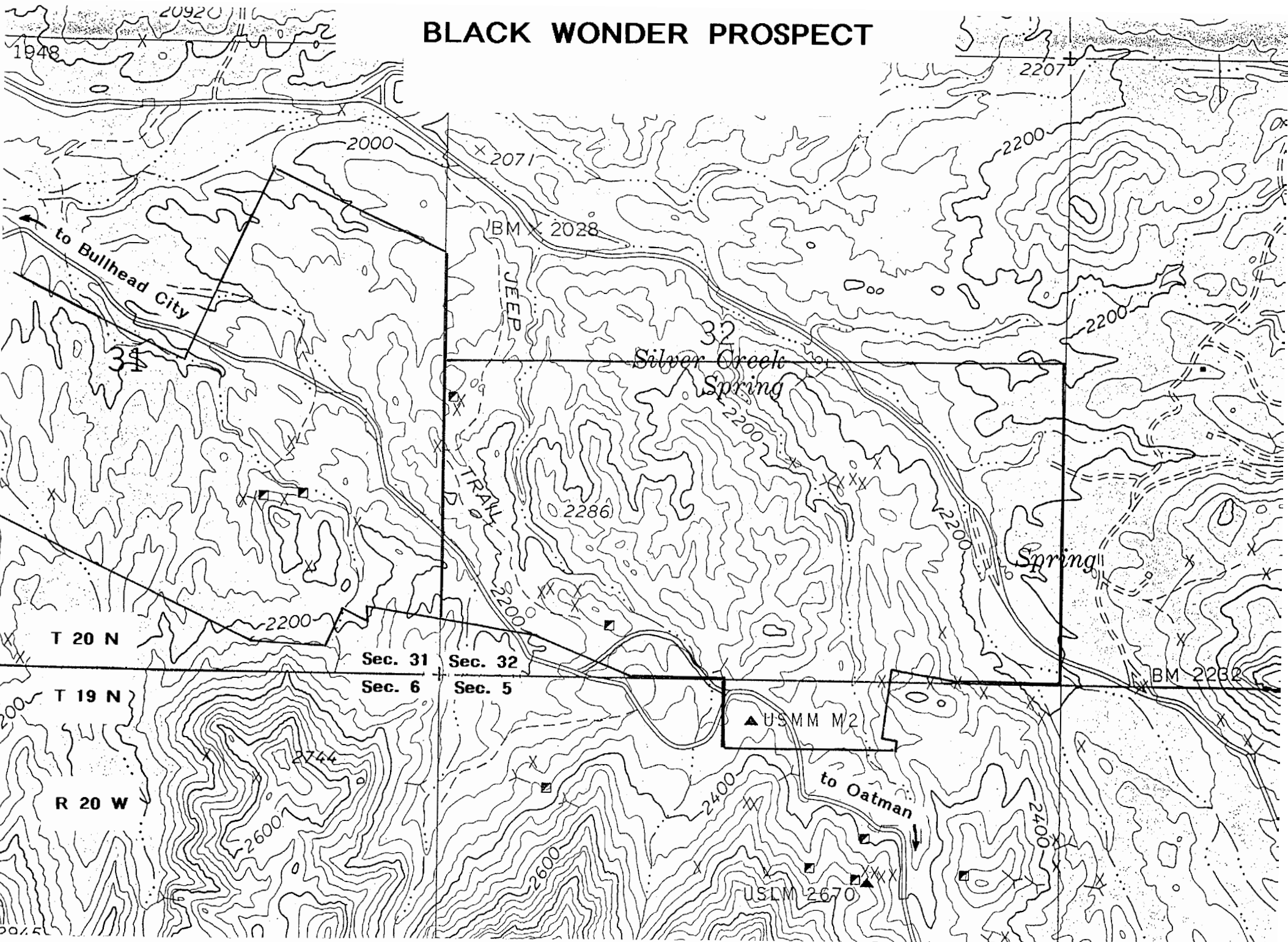


First Interstate Bank
of Nevada, N.A.
Meadowood Office 167
P.O. Box 11007
Reno, Nevada 89520

FOR Black Wonder drilling Storage

Michael R. Winston

BLACK WONDER PROSPECT



1" = 1000'

Reynolds Metals Exploration Inc.

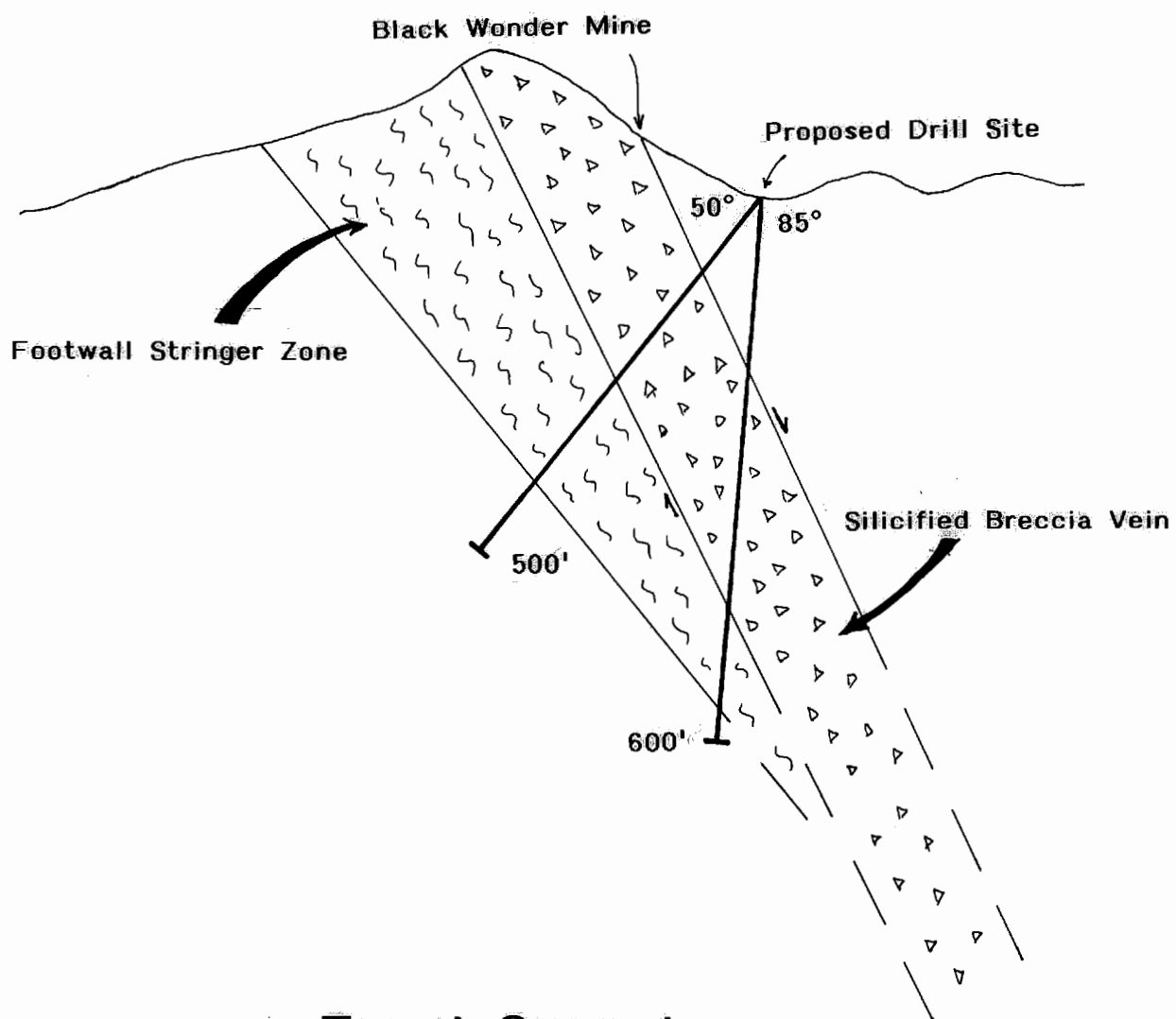
Mohave County, Arizona

Claim Map



Reynolds Metals Exploration Inc.

WEST OATMAN PROJECT



Target Concept



Reynolds Metals Exploration Inc.