



CONTACT INFORMATION  
Mining Records Curator  
Arizona Geological Survey  
416 W. Congress St., Suite 100  
Tucson, Arizona 85701  
602-771-1601  
<http://www.azgs.az.gov>  
[inquiries@azgs.az.gov](mailto:inquiries@azgs.az.gov)

The following file is part of the A. F. Budge Mining Ltd. Mining Collection

#### **ACCESS STATEMENT**

These digitized collections are accessible for purposes of education and research. We have indicated what we know about copyright and rights of privacy, publicity, or trademark. Due to the nature of archival collections, we are not always able to identify this information. We are eager to hear from any rights owners, so that we may obtain accurate information. Upon request, we will remove material from public view while we address a rights issue.

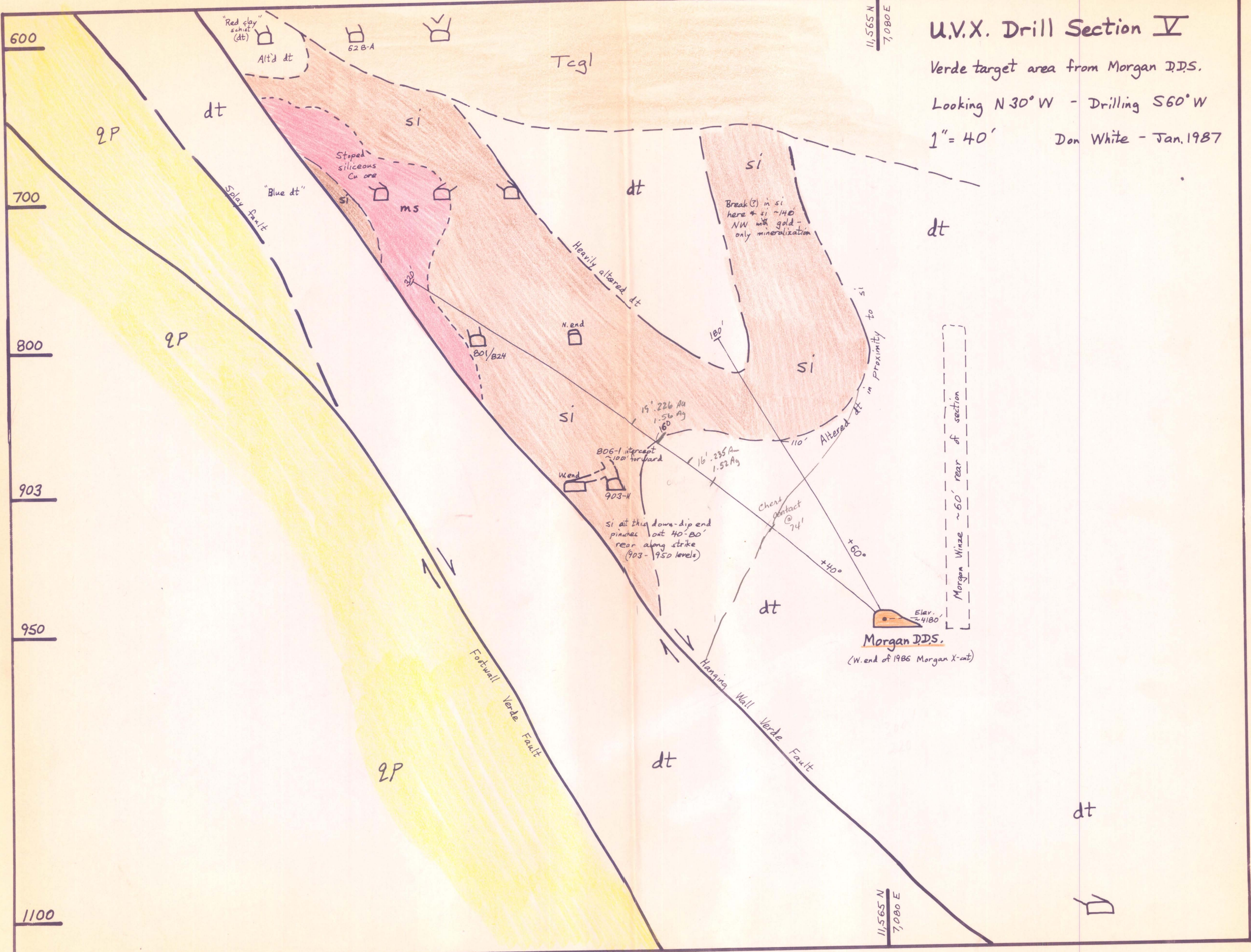
#### **CONSTRAINTS STATEMENT**

The Arizona Geological Survey does not claim to control all rights for all materials in its collection. These rights include, but are not limited to: copyright, privacy rights, and cultural protection rights. The User hereby assumes all responsibility for obtaining any rights to use the material in excess of "fair use."

The Survey makes no intellectual property claims to the products created by individual authors in the manuscript collections, except when the author deeded those rights to the Survey or when those authors were employed by the State of Arizona and created intellectual products as a function of their official duties. The Survey does maintain property rights to the physical and digital representations of the works.

#### **QUALITY STATEMENT**

The Arizona Geological Survey is not responsible for the accuracy of the records, information, or opinions that may be contained in the files. The Survey collects, catalogs, and archives data on mineral properties regardless of its views of the veracity or accuracy of those data.



**U.V.X. Drill Section V**  
 Verde target area from Morgan DDS.  
 Looking N30°W - Drilling S60°W  
 1" = 40' Don White - Jan. 1987

11,565 N  
7,080 E

11,565 N  
7,080 E

600

700

800

903

950

1100

dt





600

700

800

950

1100

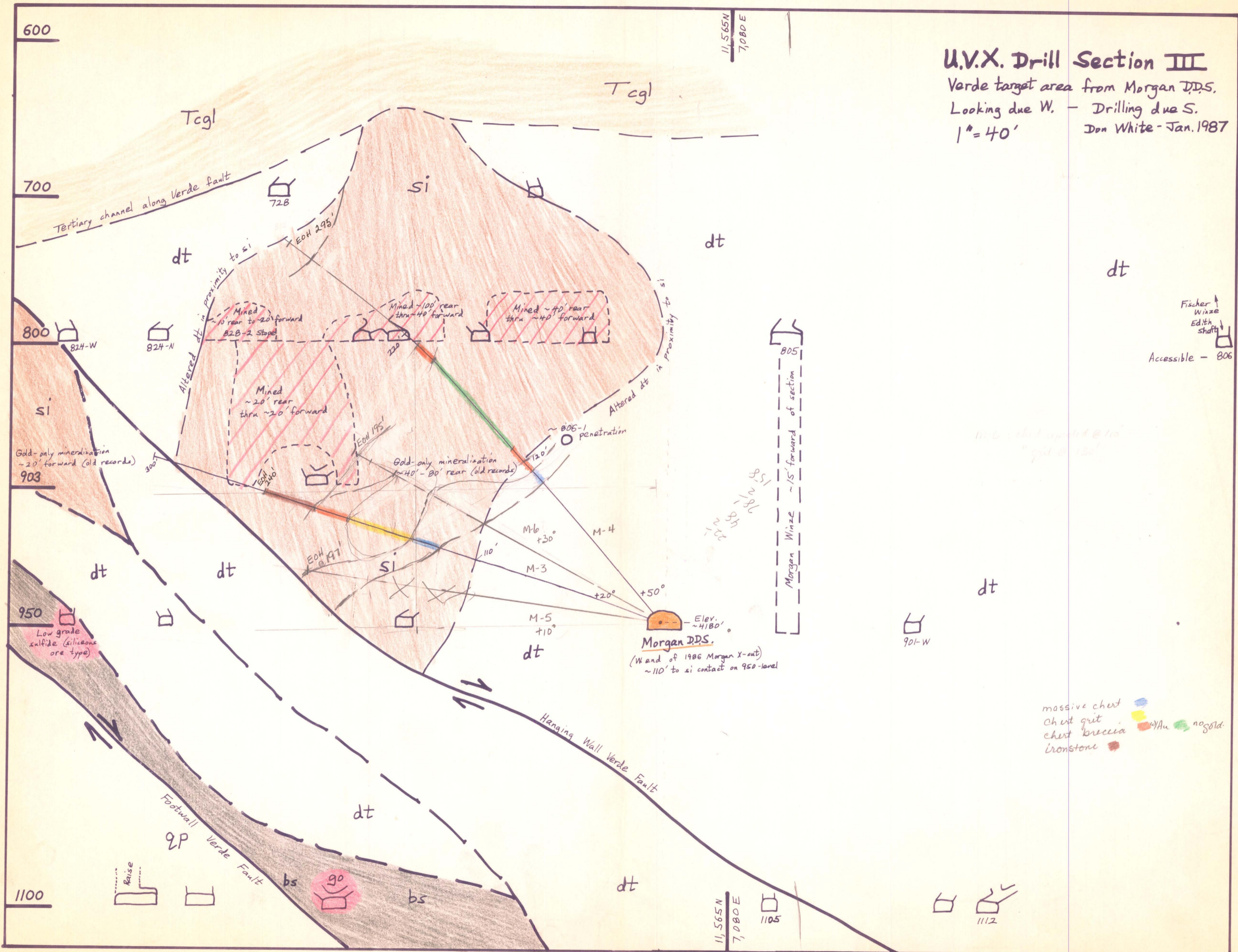
11,565N  
7,080E

11,565N  
7,080E

# U.V.X. Drill Section III

Verde target area from Morgan DDS.  
Looking due W. - Drilling due S.  
1" = 40'

Don White - Jan. 1987



dt

Fischer Winze  
Edith shaft

Accessible - 806

M-6: chert up to 10'  
"grit" @ 120'

222  
221  
220  
219  
218  
217  
216  
215  
214  
213  
212  
211  
210  
209  
208  
207  
206  
205  
204  
203  
202  
201  
200  
199  
198  
197  
196  
195  
194  
193  
192  
191  
190  
189  
188  
187  
186  
185  
184  
183  
182  
181  
180  
179  
178  
177  
176  
175  
174  
173  
172  
171  
170  
169  
168  
167  
166  
165  
164  
163  
162  
161  
160  
159  
158  
157  
156  
155  
154  
153  
152  
151  
150  
149  
148  
147  
146  
145  
144  
143  
142  
141  
140  
139  
138  
137  
136  
135  
134  
133  
132  
131  
130  
129  
128  
127  
126  
125  
124  
123  
122  
121  
120  
119  
118  
117  
116  
115  
114  
113  
112  
111  
110  
109  
108  
107  
106  
105  
104  
103  
102  
101  
100  
99  
98  
97  
96  
95  
94  
93  
92  
91  
90  
89  
88  
87  
86  
85  
84  
83  
82  
81  
80  
79  
78  
77  
76  
75  
74  
73  
72  
71  
70  
69  
68  
67  
66  
65  
64  
63  
62  
61  
60  
59  
58  
57  
56  
55  
54  
53  
52  
51  
50  
49  
48  
47  
46  
45  
44  
43  
42  
41  
40  
39  
38  
37  
36  
35  
34  
33  
32  
31  
30  
29  
28  
27  
26  
25  
24  
23  
22  
21  
20  
19  
18  
17  
16  
15  
14  
13  
12  
11  
10  
9  
8  
7  
6  
5  
4  
3  
2  
1  
0

dt

901-W

massive chert (blue)  
 chert grit (yellow)  
 chert breccia (orange)  
 ironstone (red)

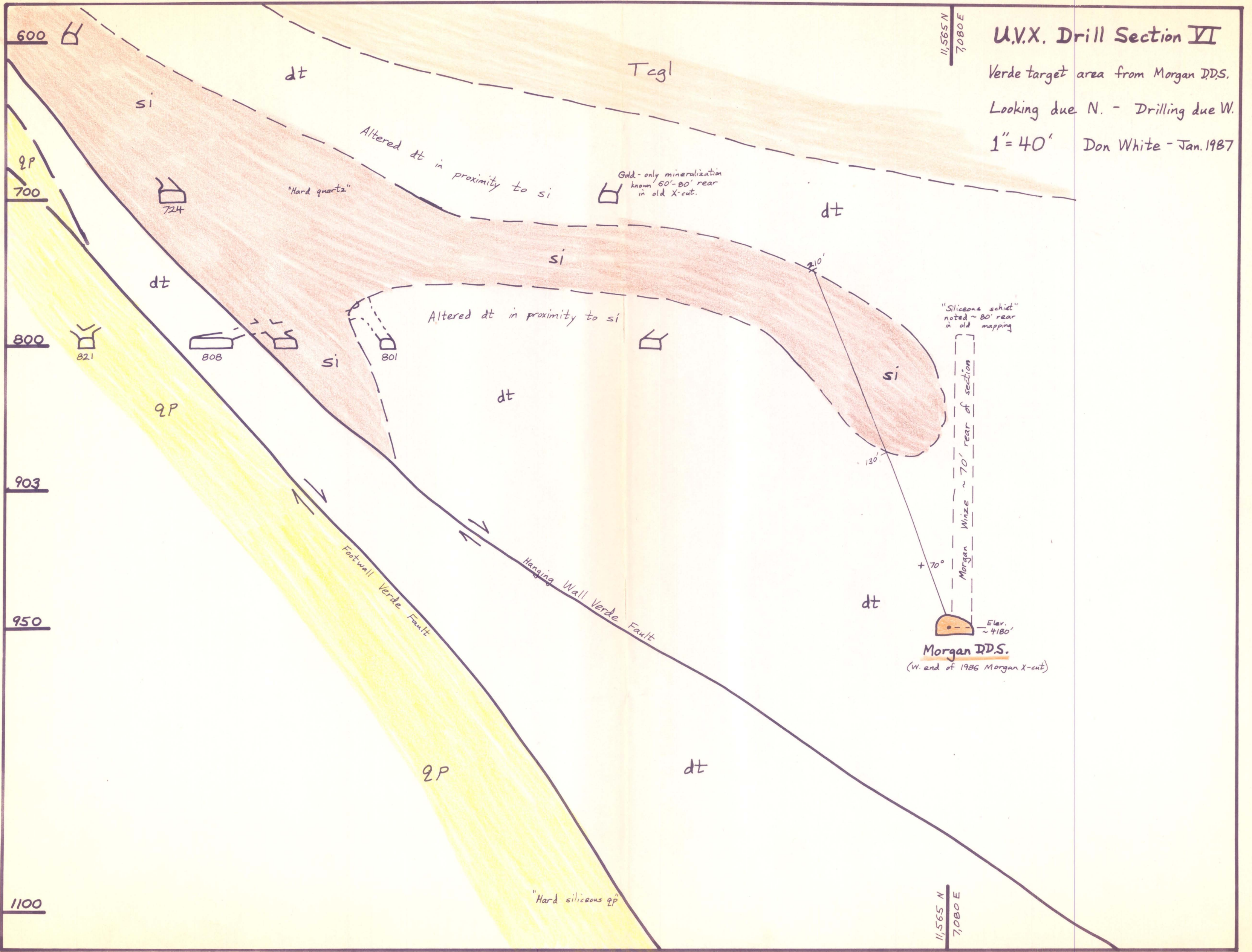
no gold (green)

1105  
1112



# U.V.X. Drill Section VI

Verde target area from Morgan DDS.  
Looking due N. - Drilling due W.  
1" = 40' Don White - Jan. 1987

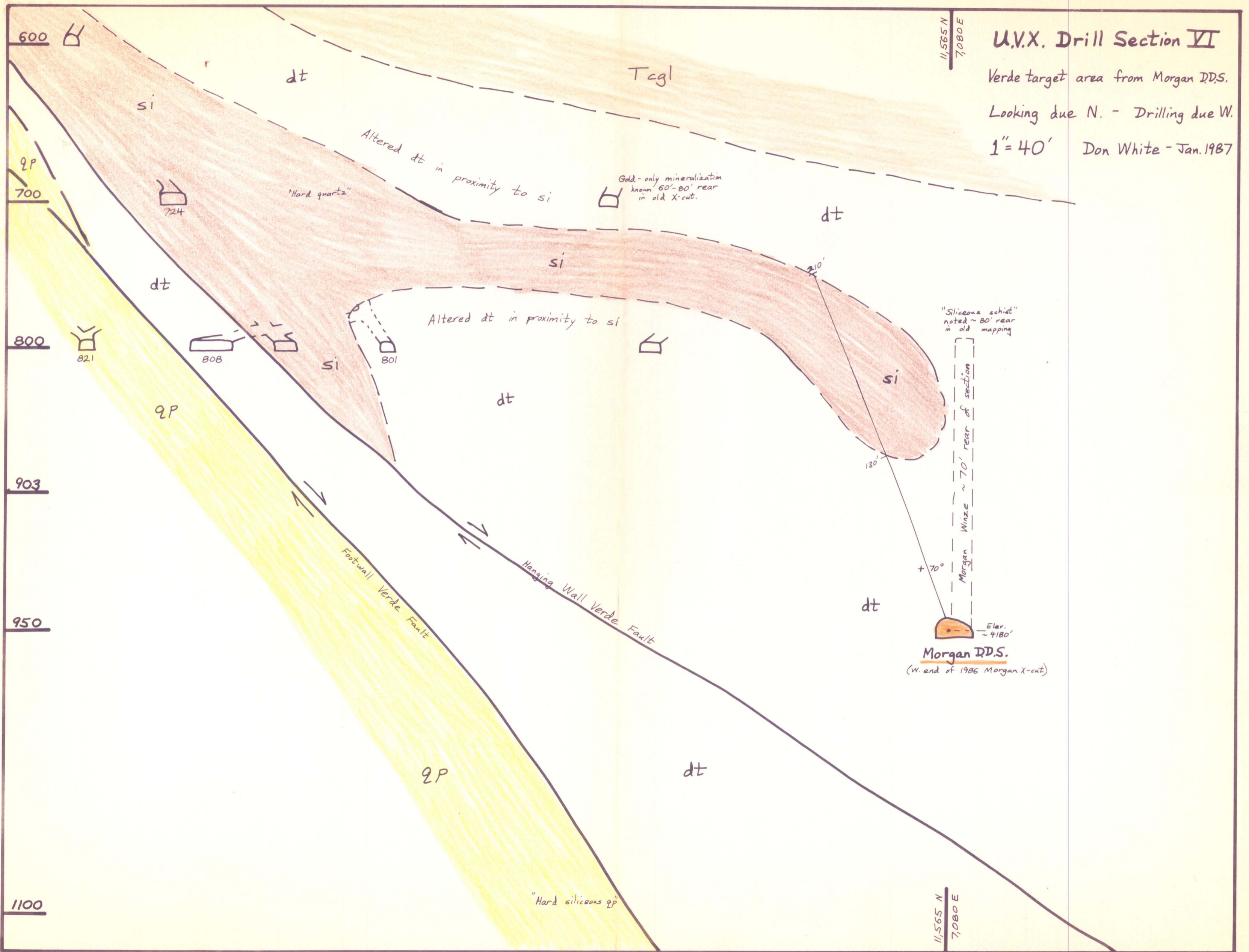


# U.V.X. Drill Section VI

Verde target area from Morgan DDS.

Looking due N. - Drilling due W.

1" = 40' Don White - Jan. 1987



600

Tcgl

# U.V.X. Drill Section VII

Verde target area from Morgan D.D.S.

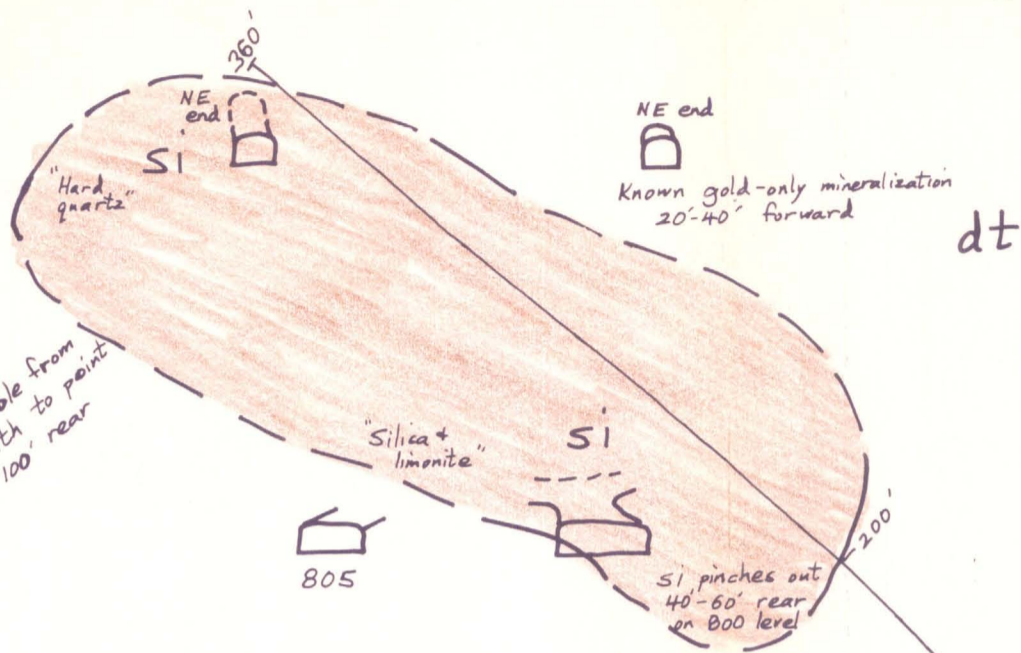
Looking N30°E - Drilling N60°W

1" = 40' Don White - Jan. 1987

11,565 N  
7080 E

700

dt



800

903

950

dt

Hanging Wall Verde Fault  
(Very oblique to line of section)

Morgan Winze ~ 60' rear of section

Morgan D.D.S.  
(W. end of 1986 Morgan X-cut)

dt

1100

Footwall Verde Fault

dt

1105

dt

11,565 N  
7080 E



600

700

800

903

950

1100

11,565 N  
7,080 E

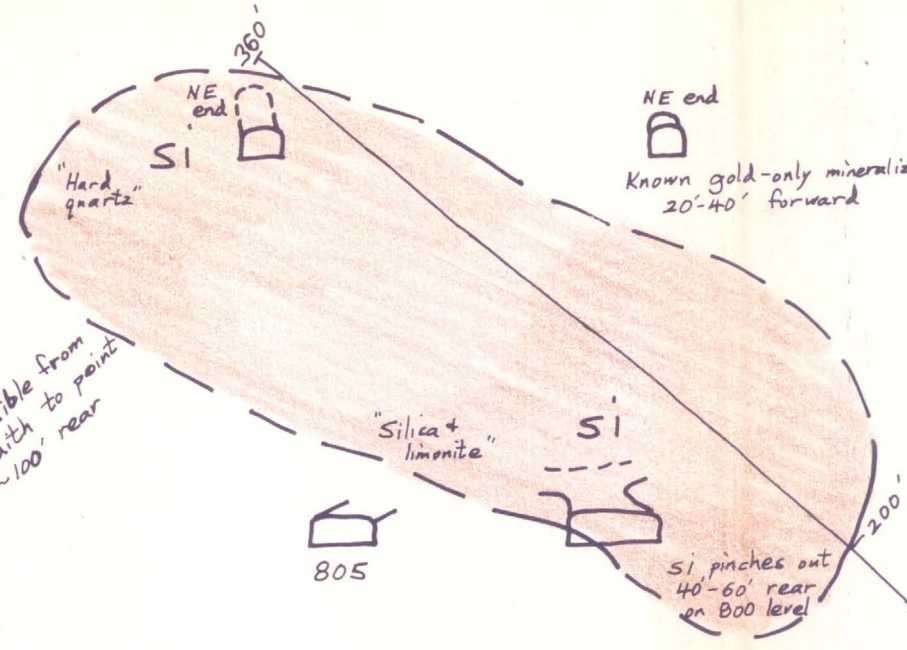
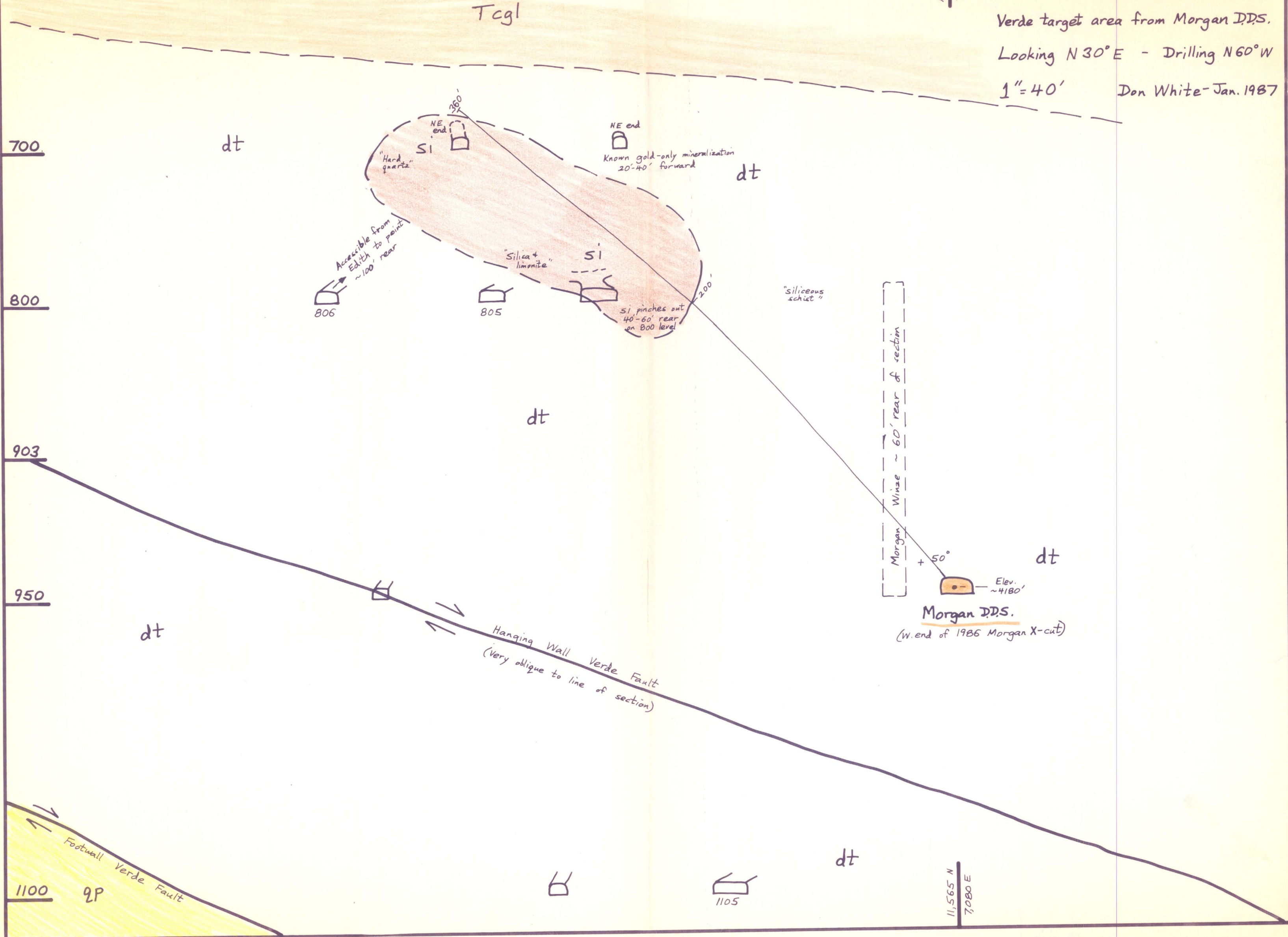
# U.V.X. Drill Section VII

Verde target area from Morgan DDS.

Looking N30°E - Drilling N60°W

1" = 40'

Don White - Jan. 1987



Morgan Winze ~ 60' rear of section

Morgan DDS.  
(W. end of 1986 Morgan X-cut)

Elev. ~4180'

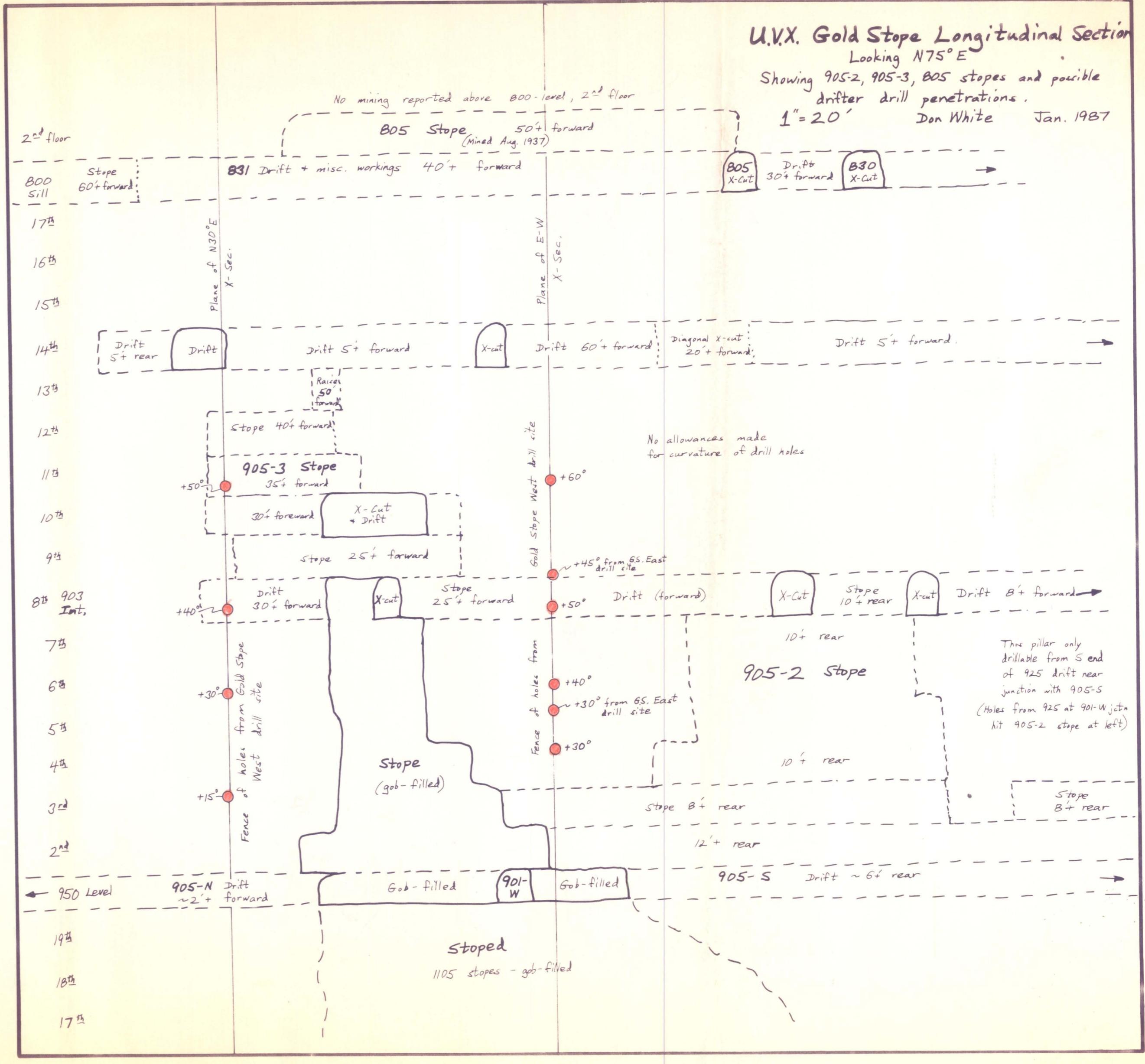
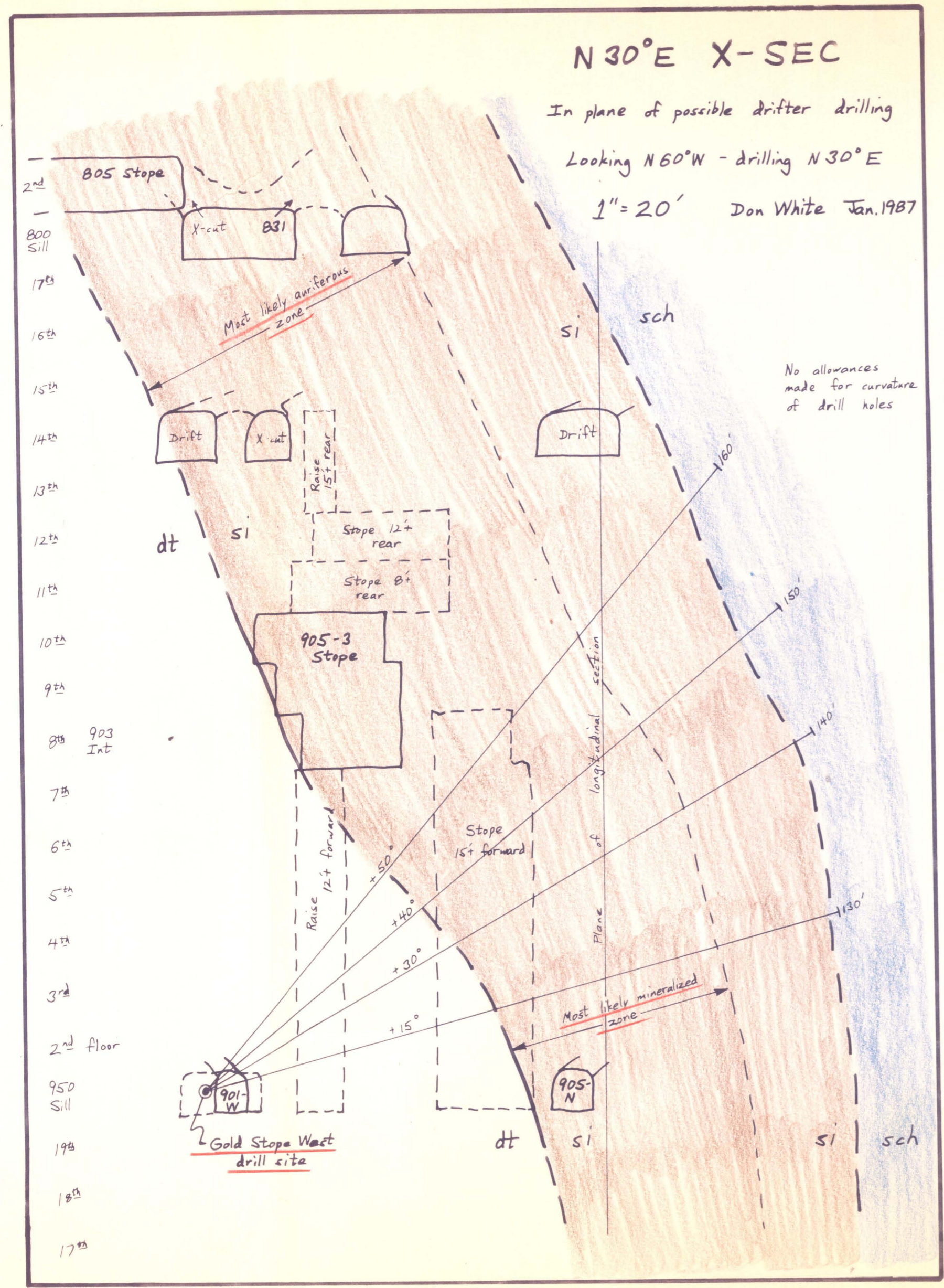
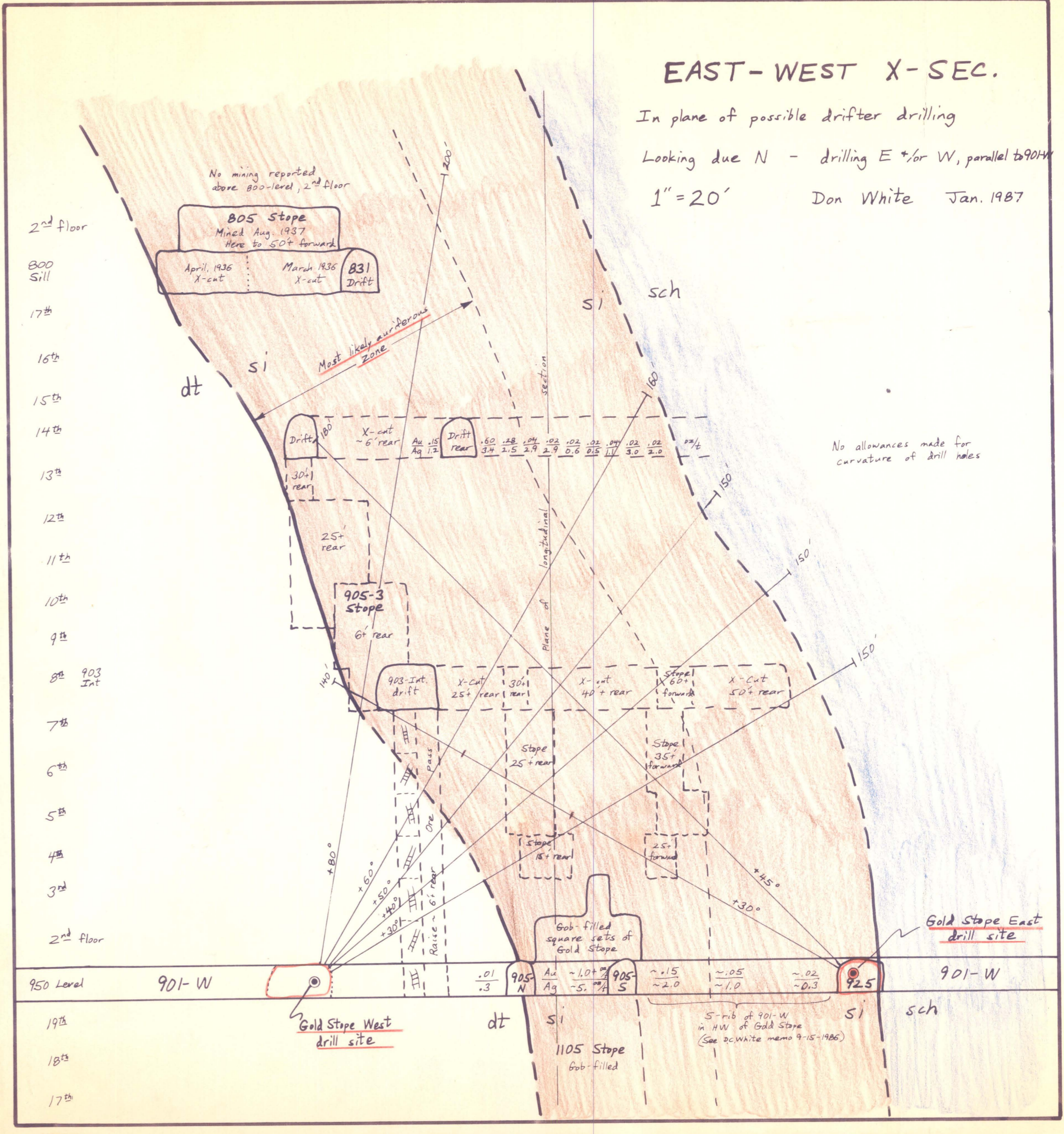
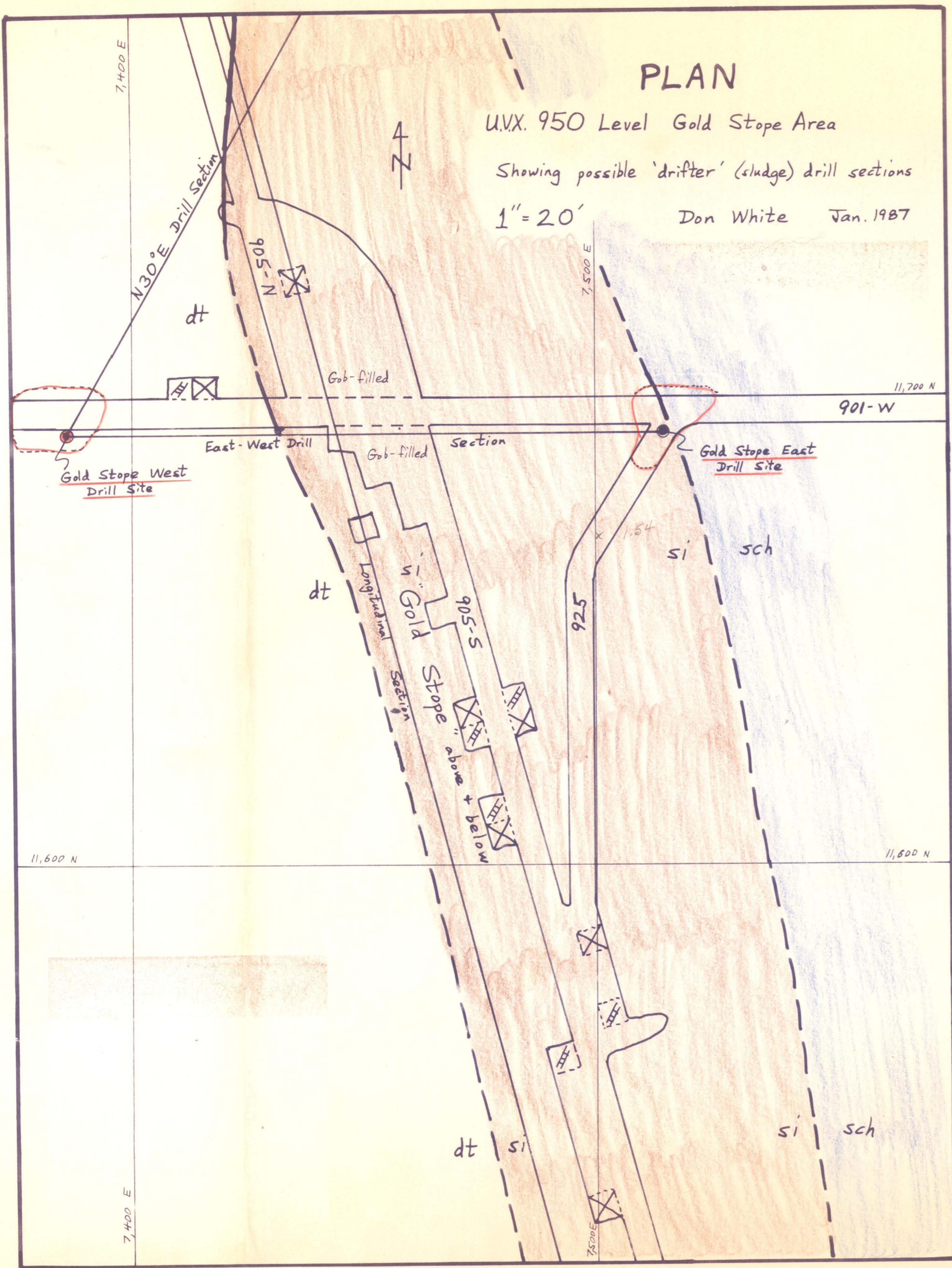
Footwall Verde Fault

Hanging Wall Verde Fault  
(Very oblique to line of section)

9P

1105

11,565 N  
7,080 E



11,600 N

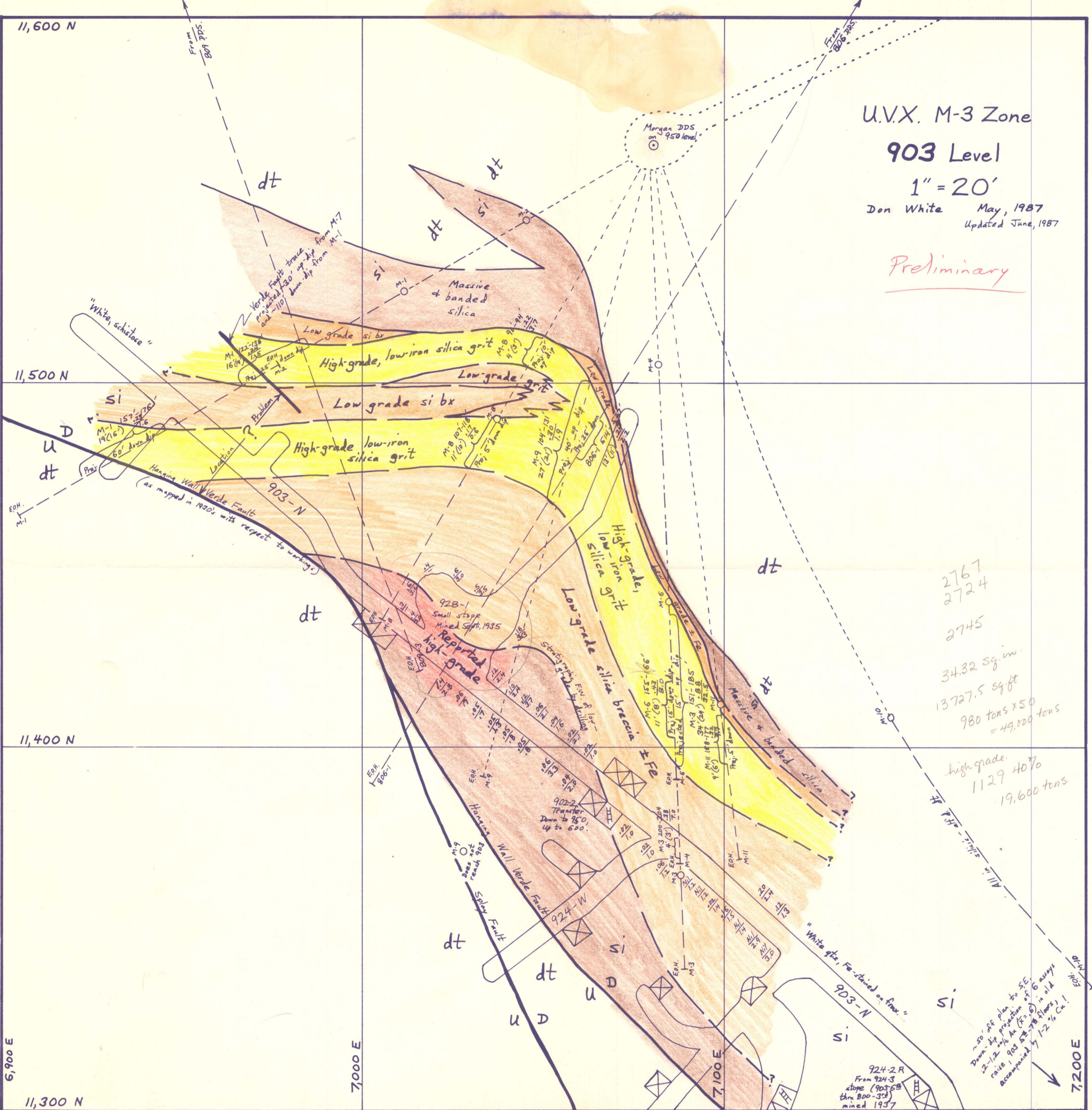
# U.V.X. M-3 Zone

## 903 Level

1" = 20'

Don White May, 1987  
Updated June, 1987

Preliminary



2767  
2724  
2745  
34.32 sq.in.  
13727.5 sq.ft  
980 tons x 50  
= 49,000 tons  
high grade.  
1129 40%  
19,600 tons

~50' dip plan to SE.  
Down-dip projection of 6 assays  
raise 903 50-70 flows, in old  
accompanied by 1-2% Cu!

924-2 R  
From 924-3  
slope (903-68  
thru 800-31)  
mined 1937

6,900 E

7,000 E

7,100 E

7,200 E

11,300 N

11,500 N

11,400 N

EOH. M-1

U D dt

From 800 pps.

From 800 pps.

Morgan DDS on 950 level.

Verde Fault trace from M-7  
projected 130' up-dip from M-1  
and -110' down-dip from M-7

Hanging Wall Verde Fault  
(as mapped in 1930s with respect to workings)

Massive & banded silica

High-grade, low-iron silica grit

Low-grade silica breccia

High-grade low-iron silica grit

Low-grade silica breccia

High-grade, low-iron silica grit

Reported high-grade

Small stopp  
Mined Sept. 1935

902-2  
Transfer  
Down to 950,  
Up to 600.

"White gtz, Fe-stained on floor"

903-N

924-W

U D

U D

U D

U D

U D

U D

U D

U D

U D

U D

U D

U D

U D

U D

U D

U D

U D

U D

U D

U D

U D

U D

U D



- Access to present stations
- Drill indicated gold mineralization
- Sloped areas
- 700 Level
- 800 Level
- 903 Intermediate Level
- 950 Level

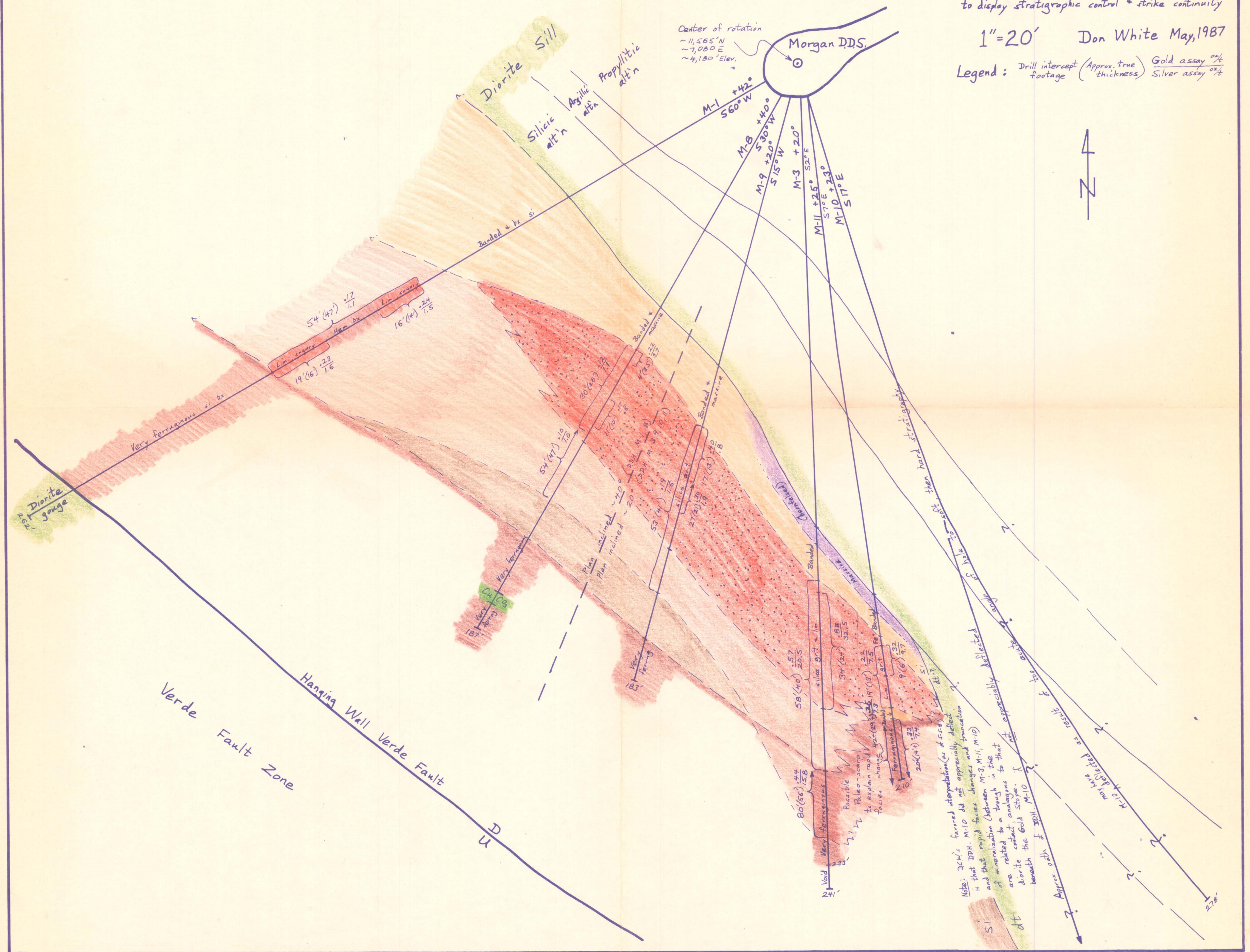
\*Gold Stope mined 1922 - 1935 (?)  
 35,000 tons  
 2.0 oz/1 Silver

200.5 m, 66° - 23' dip  
 111'  
 3.14°

U.V.X. Morgan Drilling  
 Inclined (±20°, 40°) and discontinuous (broken, projected)  
 long. section thru **M-3 Ore Zone**  
 to display stratigraphic control + strike continuity

1" = 20' Don White May, 1987

Legend: Drill intercept (Approx. true footage) (thickness) Gold assay %  
 Silver assay %



### U.V.X. Gold Project - Verde Area - M-3 Ore Zone

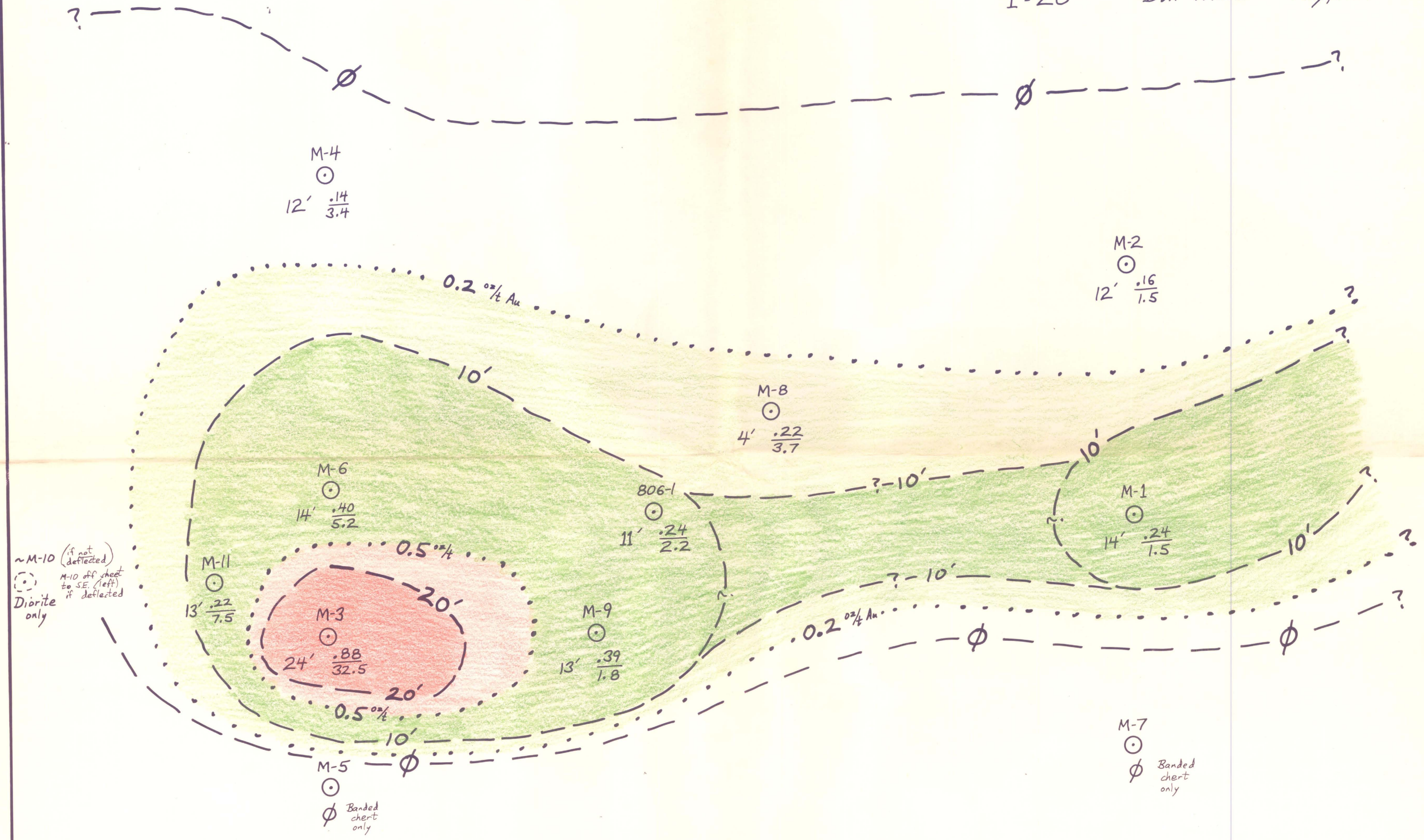
Inclined longitudinal section, looking ~S50°W, ~+40°

Showing isopachs ( $\phi, 10', 20'$ ) of  $\geq .25$  oz/t Au

and contours (.2, .5 oz/t) of gold grades

Footages + grades posted for each hole are approx. true thickness +  $\frac{\text{gold}}{\text{silver}}$  assays

1 = 20' Don White May, 1987

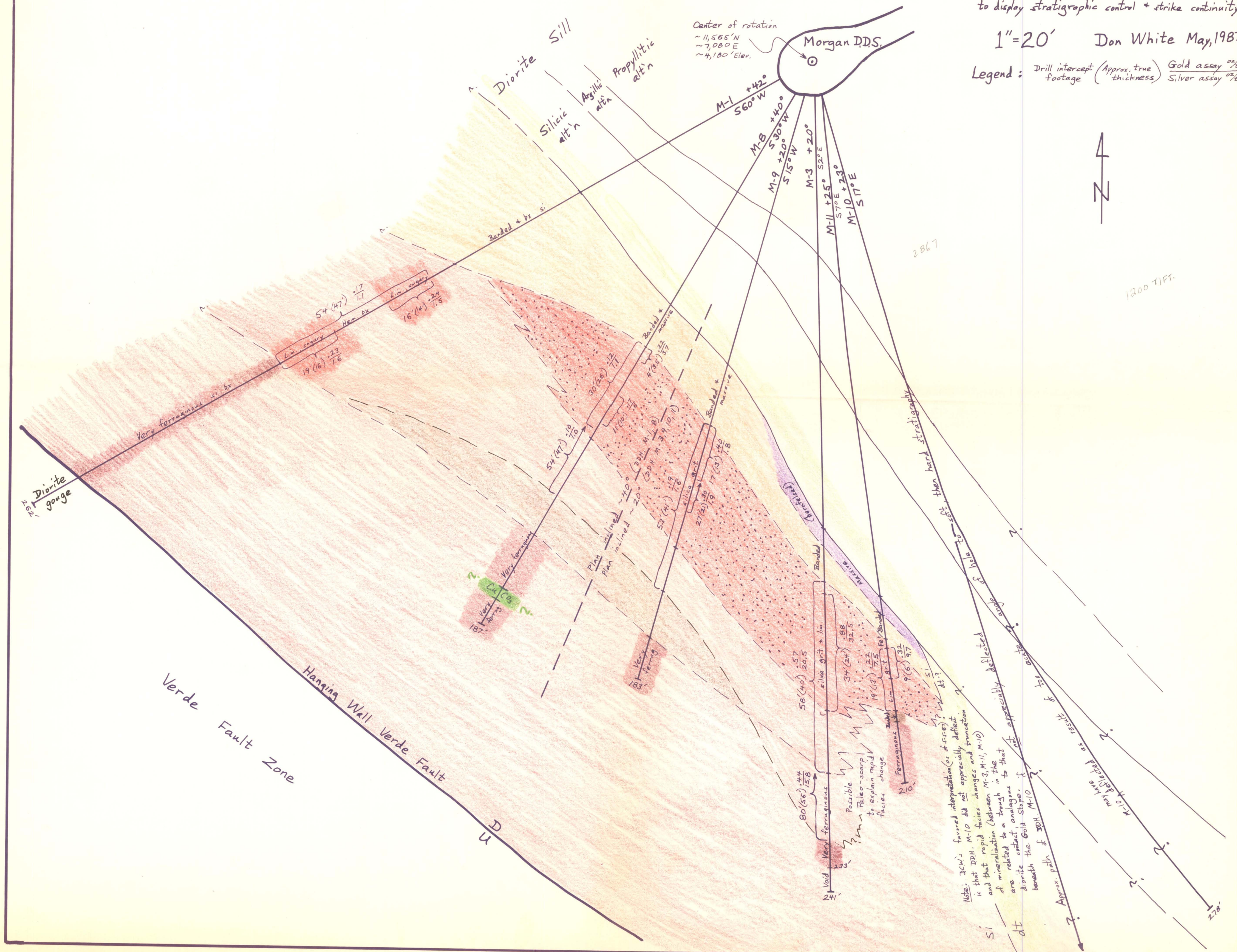


Note: Datum is approximately the stratigraphic top of the very ferruginous chert breccia (base of any significant precious metal mineralization).

U.V.X. Morgan Drilling  
 Inclined (20°, 40°) and discontinuous (broken, projected)  
 long. section thru **M-3 Ore Zone**  
 to display stratigraphic control + strike continuity

1" = 20' Don White May, 1987

Legend: Drill intercept (Approx. true footage) (thickness) Gold assay oz/t Silver assay oz/t



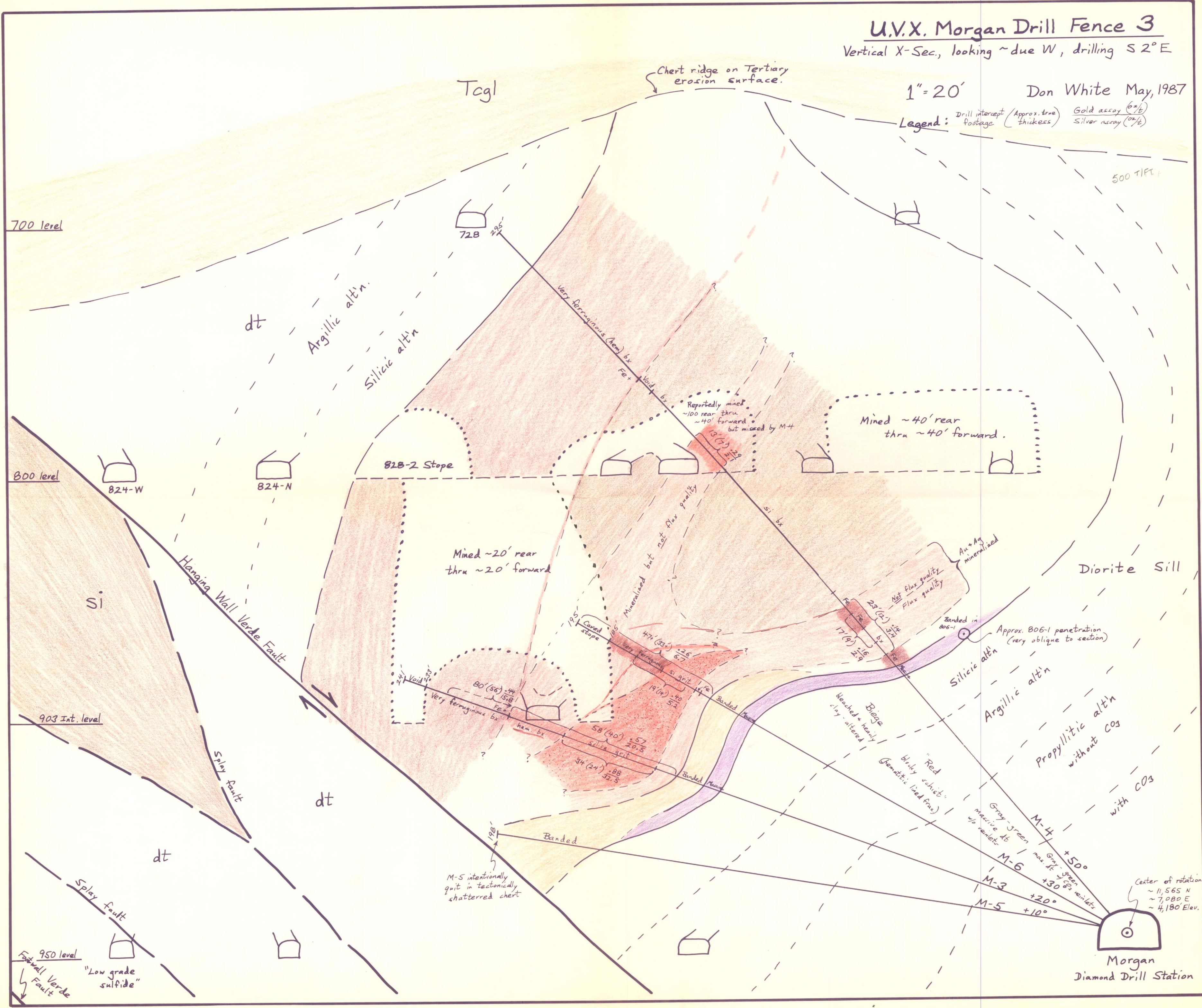
# U.V.X. Morgan Drill Fence 3

Vertical X-sec., looking ~ due W, drilling S 2° E

1" = 20'

Don White May, 1987

Legend: Drill intercept (Approx. true thickness) Gold assay (oz/t) Silver assay (oz/t)



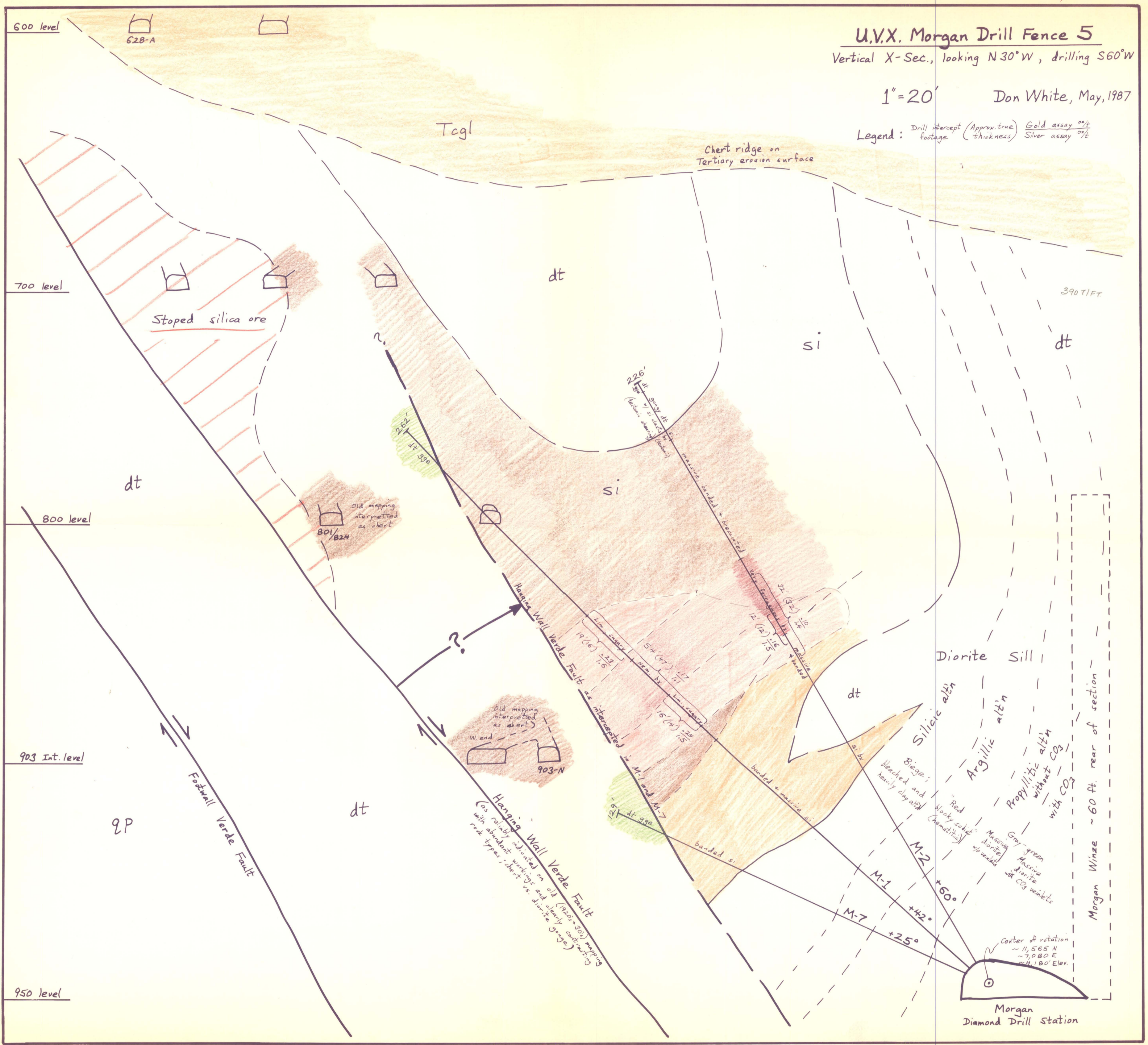


# U.V.X. Morgan Drill Fence 5

Vertical X-Sec., looking N30°W, drilling S60°W

1" = 20' Don White, May, 1987

Legend: Drill intercept (Approx. true footage) (Approx. true thickness) Gold assay <sup>oz/t</sup> Silver assay <sup>oz/t</sup>



600 level

628-A

700 level

Stoped silica ore

Tcgl

Chert ridge on Tertiary erosion surface

dt

si

390 T/Ft

dt

226' dt 390' dt 5' (Au 0.01, Ag 0.01) (Au 0.01, Ag 0.01) massive banded & brecciated

282' dt 390'

801/824 Old mapping interpreted as chert

si

800 level

dt

Hanging Wall Verde Fault as interpreted in M-1 and M-7

Old mapping interpreted as chert W end 903-N

Diorite Sill

dt

903 Int. level

Fossil Verde Fault

Silicic alt'n Biege; bleached and heavily clayed (hematitic)

Argillic alt'n

Propylitic alt'n without CO2 with CO2

Hanging Wall Verde Fault (as reliably indicated on old (1920's-30's) mapping with abundant workings and clearly contrasting rock types; chert vs. diorite gänge)

Red blocky schist (hematitic)

Massive diorite w/o veins

Gray-green Massive diorite with CO2 veinlets

950 level

9P

M-1

M-2

+60°

M-7

+42°

+25°

Center of rotation ~ 11,565 N ~ 7,080 E ~ 4,180' Elev.

Morgan Diamond Drill Station

Morgan Winze ~ 60 ft. rear of section