



CONTACT INFORMATION  
Mining Records Curator  
Arizona Geological Survey  
416 W. Congress St., Suite 100  
Tucson, Arizona 85701  
520-770-3500  
<http://www.azgs.az.gov>  
[inquiries@azgs.az.gov](mailto:inquiries@azgs.az.gov)

The following file is part of the

James Doyle Sell Mining Collection

### **ACCESS STATEMENT**

These digitized collections are accessible for purposes of education and research. We have indicated what we know about copyright and rights of privacy, publicity, or trademark. Due to the nature of archival collections, we are not always able to identify this information. We are eager to hear from any rights owners, so that we may obtain accurate information. Upon request, we will remove material from public view while we address a rights issue.

### **CONSTRAINTS STATEMENT**

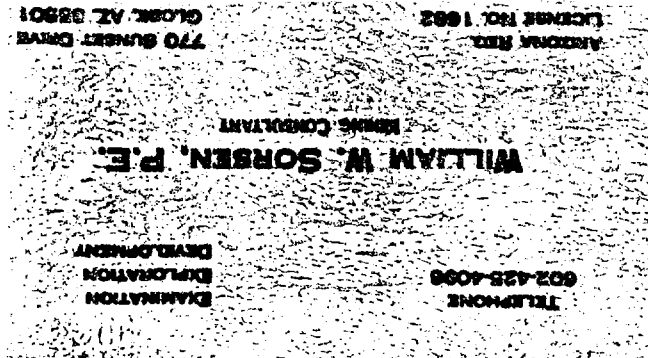
The Arizona Geological Survey does not claim to control all rights for all materials in its collection. These rights include, but are not limited to: copyright, privacy rights, and cultural protection rights. The User hereby assumes all responsibility for obtaining any rights to use the material in excess of "fair use."

The Survey makes no intellectual property claims to the products created by individual authors in the manuscript collections, except when the author deeded those rights to the Survey or when those authors were employed by the State of Arizona and created intellectual products as a function of their official duties. The Survey does maintain property rights to the physical and digital representations of the works.

### **QUALITY STATEMENT**

The Arizona Geological Survey is not responsible for the accuracy of the records, information, or opinions that may be contained in the files. The Survey collects, catalogs, and archives data on mineral properties regardless of its views of the veracity or accuracy of those data.

JDS



RECONNAISSANCE  
REPORT  
OF  
NEW DEAL MINING CLAIMS  
SPRING CREEK MINING DISTRICT  
GILA COUNTY, ARIZONA

Sections 1, 2, 12.  
T9N, R12E



NEW DEAL CLAIMS  
SPRING CREEK MINING DISTRICT  
GILA COUNTY, ARIZONA

Property

This property is known as the old "Houden Mine" and consists of 12 unpatented lode mining claims called "New Deal" numbers 1-12, recorded in Booklet 599, pages 145-148, Docket 497, pages 62-74, Docket 560, pages 779-781, and Docket 709- pages 778-784, in the Gila County Record of Mines, Bureau of Land Management registration numbers are: AMC 208020- 208021, 102079-102082, 161357- 161358, 272290-272293.

Location

The New Deal Group is located in the Spring Creek Mining District in the northern end of the Sierra Ancha Mountains in Sections 1, 2, and 12, T9N, R12E, Gila and Salt River Meridian, Gila County, Arizona. The property is located 8 miles west of Young, Arizona, the nearest town, and 74 miles north of Globe, Arizona and the closest smelter operated by Cyprus Miami Mines.

History

Local residents claim that the mine was operated in 1897 by the owner, Alex Houden, who processed the ore in a crude arrastra where Walnut Creek joins Spring Creek. Alex was ambushed and killed by unknown parties. The property was idle until the late 30s, when Ed Phelan built a small gravity mill at the site and did extensive underground development. The mine was shut down during the war and has not been active since. Phelan left two piles of reject ore that assay 0.25 and 0.65 oz. gold per ton. Surface outcrop samples assay from 0.16 to 0.86 oz. gold per ton.

A caved incline shaft and several open cuts expose the vein for 500 feet along a quartz outcrop which strikes about N40W and dips 32 degrees Northeast. Another vein system about 1000 feet Southeast of the shaft was prospected by open cuts and exposes a good grade of ore as evidenced by the stockpile at the site. This vein strikes about N45E and dips about 70 degrees East. The outcrop is exposed for 600 feet and varies in width from 5 to 50 feet.

Geology

The entire mine area is of steep relief with folding, faulting, and deep erosional channels creating steep alluvial slopes and cliff forming members of metasediments and meta volcanics. Precambrian quartzites of the Apache Series are prominent. Pillow volcanics and schists are invaded by prominent quartz veins in the mine area.

Geology-continued

Some brecciated wall rock is included in the vein contacts and portions of the vein quartz are oxidized to dark red due to the presence of sulfides. Vein minerals are quartz, pyrite, hematite, limonite, jarosite, specularite, free gold and gold in combination with sulfides. Some copper carbonates are present in small amounts. The vein structures are very prominent and obviously intersect at depth, making an ideal exploration target.

Exploration and Development Objectives.

An economical approach to exploration of this property would be pneumatic drilling with an airtrac to a depth of 100 feet or less to determine continuity and position of the vein structures. Drill cuttings could be panned to select samples for assay. If the outcome of this preliminary drilling indicates a a feasible core drilling program, it could be initiated with confidence.

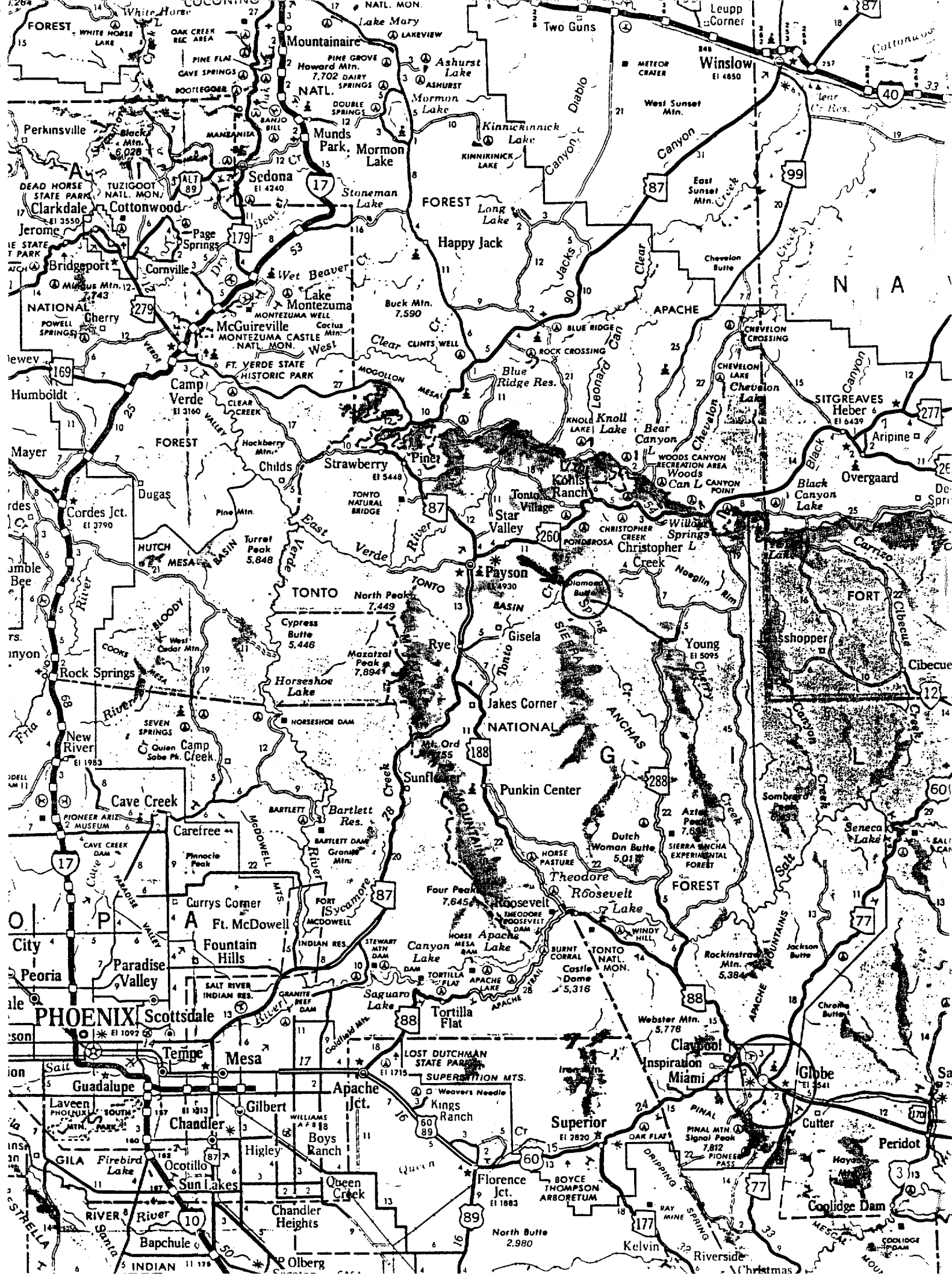
Preliminary development vein material could be shipped for smelter flux or stockpiled for future processing or heap leached. Other gold properties on the Spring Creek drainage nearby would provide additional ore for custom processing. None of the local prospects has ever been explored by drilling however numerous surface occurrences indicate the probability of commercial orebodies at depth. Local claim owners are eager to have their properties explored and realize that a drilling program is needed to confirm their expectations.

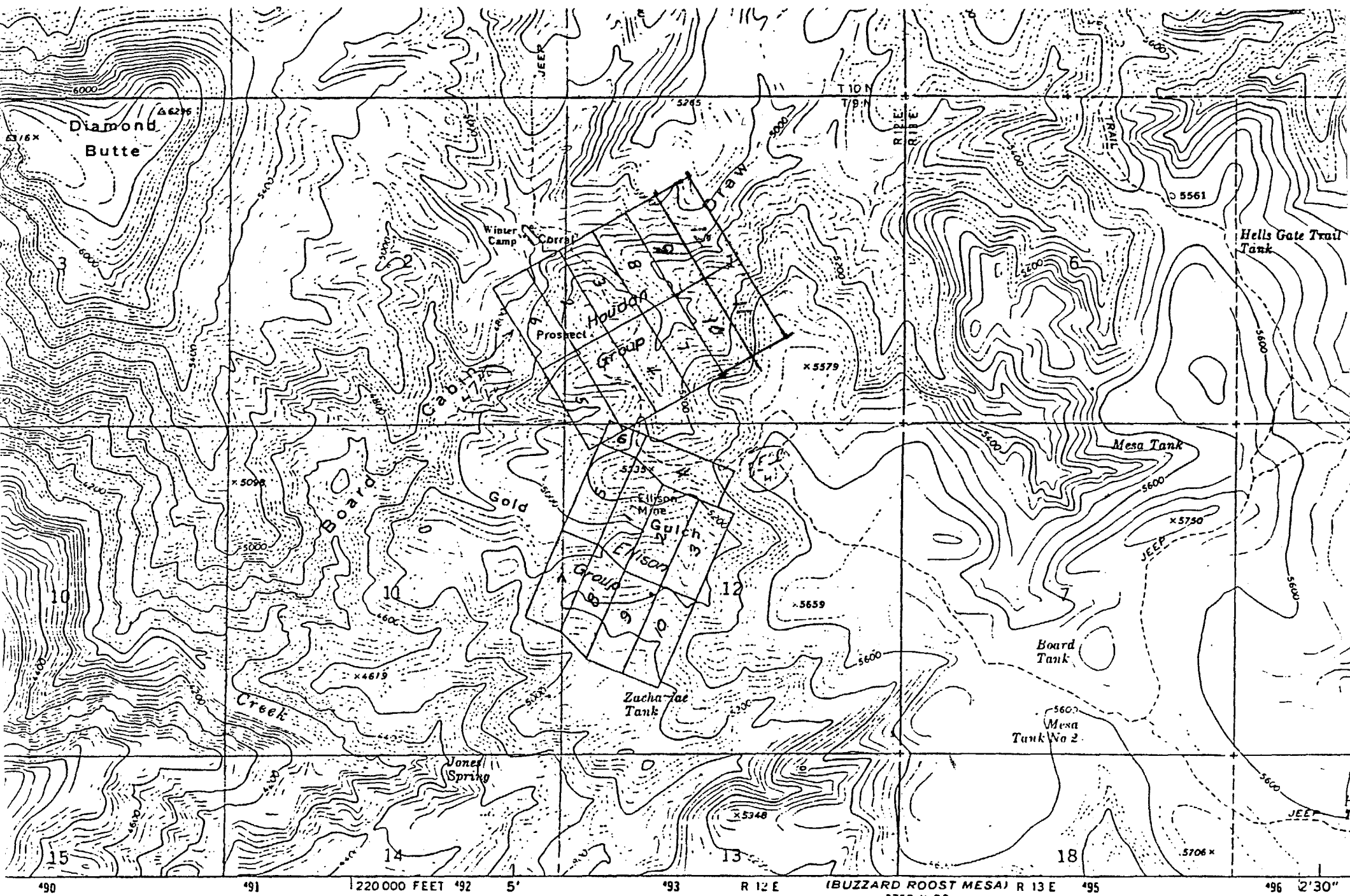
Inquiries should be addressed to:

Wm. W. Sorsen  
770 Sunset Drive  
Globe, AZ. 85501  
Tel. 602 425 4096

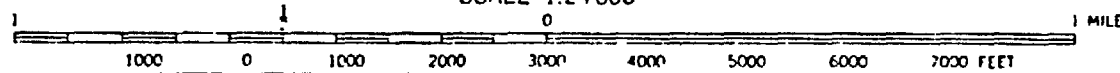
or

Clifford Konczak  
762 Cherry Ave.  
Globe, AZ. 85501  
Tel. 602 425 2288





al Survey



# MAP OF MINING CLAIM LOCATION

- The name of the claim is NEW DEAL #12
- The SW corner of the claim is 3180 feet in a S44-30W direction to a survey monument or permanent natural object described as SW Cor. Sec. 1, T9N, R12E
- The type of location monument is a 2"x2"x4" post  
The type of corner and end monuments are 2"x2"x4" posts
- The bearing and distance between the corners of the claim are beginning at the SW corner of the claim, 600 feet in a N60E direction to the SE corner, then 1500 feet in a N30W direction to the NE corner, then 600 feet in a S60W direction to the NW corner, then 1500 feet in a S30E direction to the point of beginning.

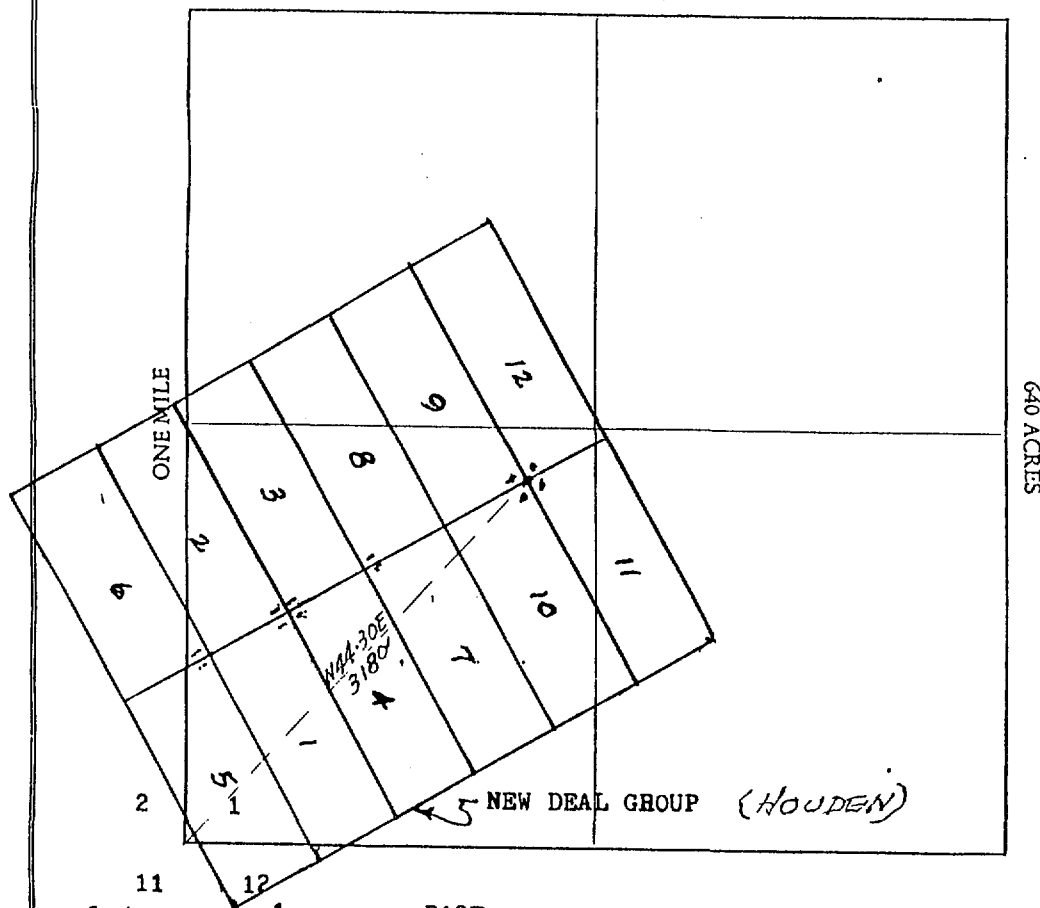
## MAP

One inch = One thousand feet

North Arrow



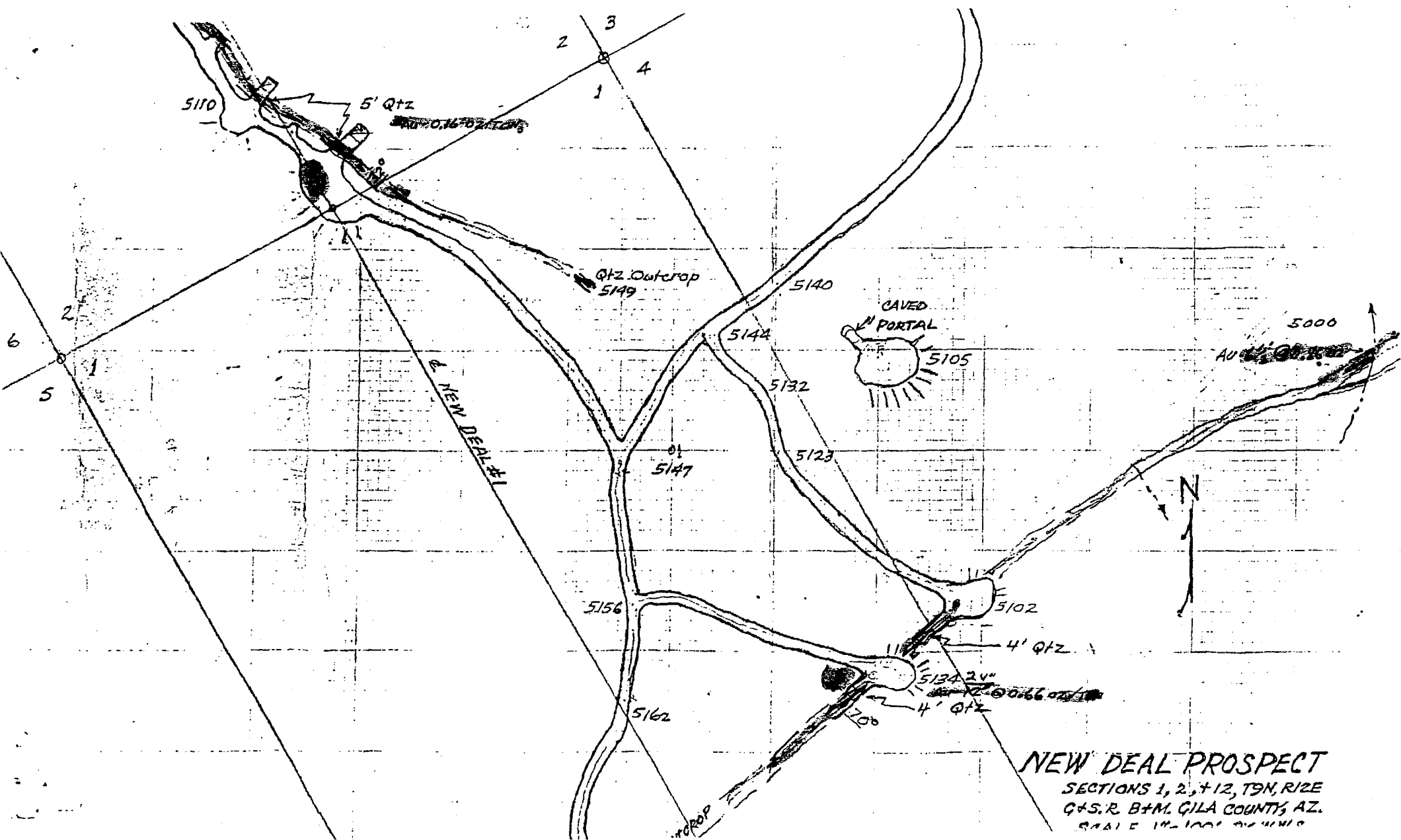
ONE MILE



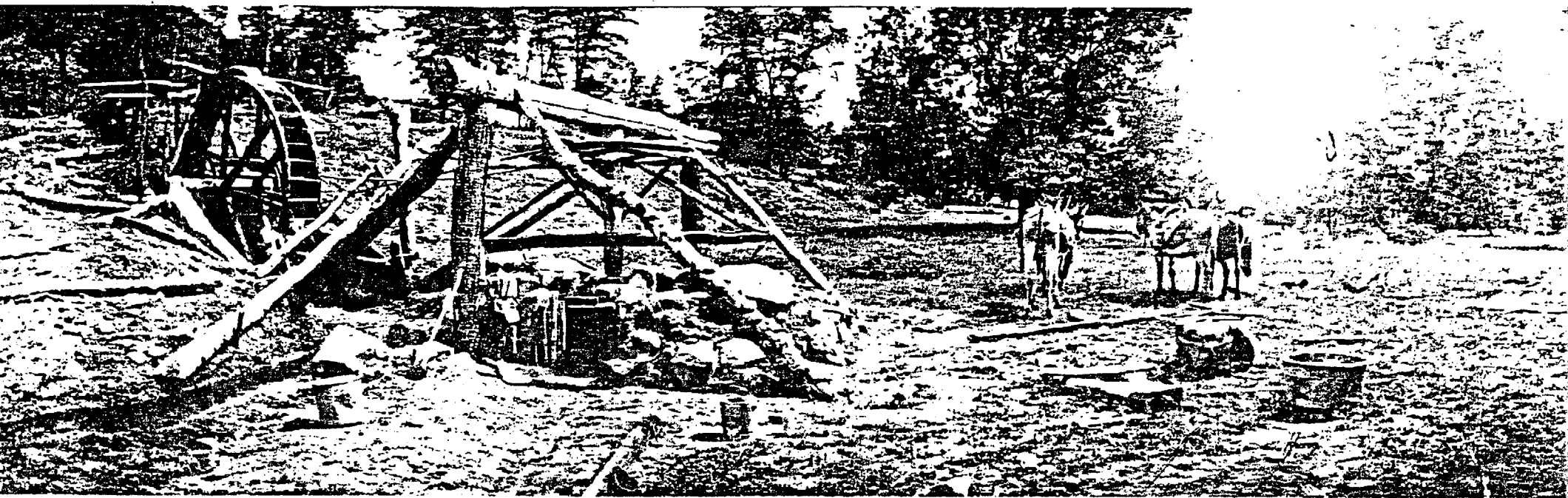
Section 1 Range R12E Township T9N G&SRB&M

Date June 15, 1987

*Wm J. Dorian*  
Signature







WOODEN ARRASTRA - 1898