



CONTACT INFORMATION
Mining Records Curator
Arizona Geological Survey
416 W. Congress St., Suite 100
Tucson, Arizona 85701
520-770-3500
<http://www.azgs.az.gov>
inquiries@azgs.az.gov

The following file is part of the

James Doyle Sell Mining Collection

ACCESS STATEMENT

These digitized collections are accessible for purposes of education and research. We have indicated what we know about copyright and rights of privacy, publicity, or trademark. Due to the nature of archival collections, we are not always able to identify this information. We are eager to hear from any rights owners, so that we may obtain accurate information. Upon request, we will remove material from public view while we address a rights issue.

CONSTRAINTS STATEMENT

The Arizona Geological Survey does not claim to control all rights for all materials in its collection. These rights include, but are not limited to: copyright, privacy rights, and cultural protection rights. The User hereby assumes all responsibility for obtaining any rights to use the material in excess of "fair use."

The Survey makes no intellectual property claims to the products created by individual authors in the manuscript collections, except when the author deeded those rights to the Survey or when those authors were employed by the State of Arizona and created intellectual products as a function of their official duties. The Survey does maintain property rights to the physical and digital representations of the works.

QUALITY STATEMENT

The Arizona Geological Survey is not responsible for the accuracy of the records, information, or opinions that may be contained in the files. The Survey collects, catalogs, and archives data on mineral properties regardless of its views of the veracity or accuracy of those data.

Property Name: White Elephant *See Senator*

Location: Sections 20 and 30, T29N, R18W
Mohave County, Arizona

Acreage: Approximately 1440 acres

Land Status: 72 unpatented lode claims located by ECM.

Underlying Royalty: None

Work to Date: Small-scale placer mining occurred on or adjacent to the White Elephant property in the past. Numerous prospect pits and several trenches indicate past efforts to expose gold mineralization associated with the northeast trending White Elephant shear zone. Mapping and sampling by ECM has delineated a gold-enriched, mega-shear system cutting Precambrian metasedimentary and metavolcanic lithologies containing preconcentrated amounts of gold, arsenic, and base metals.

Target: The primary target at White Elephant is a shear zone hosted metamorphogenic gold deposit within Precambrian upper greenschist-amphibolite facies metamorphic rocks. A secondary target is also inferred by the presence of auriferous chemical (?) sediments within metamorphosed volcanogenic stratigraphy. These anomalous rocks support a possible syngenetic, strat-bound gold target.

Positive Data: Pervasive and locally very strong silicification, carbonatization, and K-rick silicate alteration along the White Elephant shear zone depicts multi-stage hydrothermal events that were focused by the structure. Gold, arsenic, and base metal anomalies associated with the shear zone and select volcanogenic units provide areas for target analysis. Widespread placer gold deposits along the trend of the shear zone support a large conceptual target, or numerous disconnected gold occurrences of unknown size and tenor.

**MINERALIZATION
and
TARGET AREAS**

SCALE: 1" = 2000'

PROPERTY: White Elephant

LOCATION: Mohave Co., Arizona

DATA BY: GJH, USGS

DATE: 10/89 REVISED:

ECM Inc.
P.O. Box 3493
Billings, Montana 59103



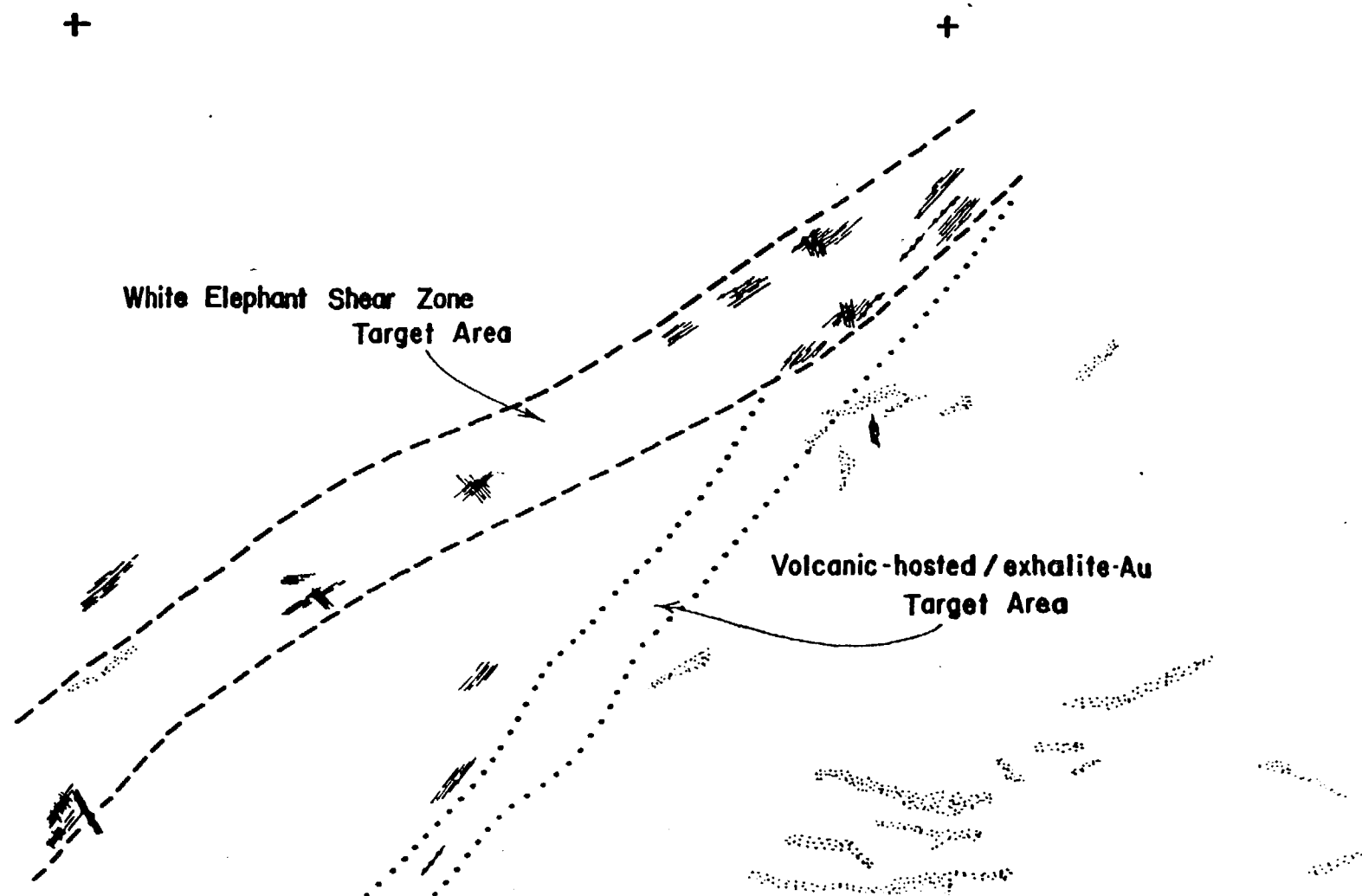
Quartz - CO₂ ± limonite(sulfide) veinlets and limonite(sulfide)-bearing fractures



Quartz - Kfeldspar - CO₂ ± sulfide veins and pegmatites



Area of placer mining



SCALE: 1" = 2000'

SCALE: 1" = 2000'

PROPERTY: White Elephant

LOCATION: Mohave Co., Arizona

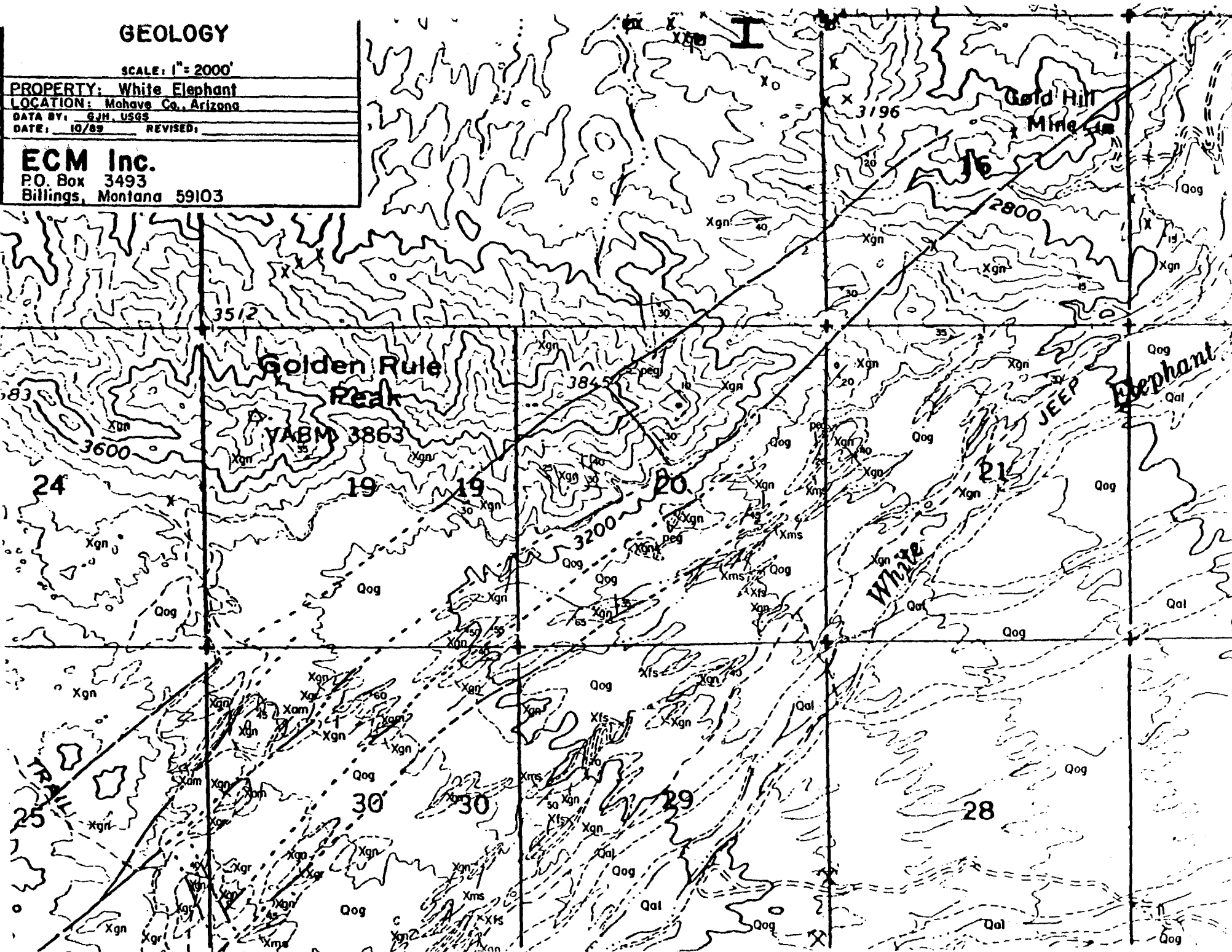
DATA BY: GJH, USGS

DATE: 10/89 REVISED:

ECM Inc.

P.O. Box 3493

Billings, Montana 59103



Introduction

White Elephant
Sec 20, T29N, R18W

Senator
Sec. 10, T28N, R19W

Roodrunner
Sec. 15, T28N, R18W

Mohave Co, AZ

ECM, Inc.'s principle business is to assemble and vend early stage exploration targets. In most cases, it vends its properties through mining leases. However, it will consider joint ventures or other transactions.

This booklet contains summary descriptions of the ECM properties now available to be vended. More detailed reports are available on most of the properties and will be sent upon request.

Anyone interested in seeing detailed reports on any of the properties, or in learning more about ECM or its properties should call Patrick Cavanaugh or Bruce Ennis at 406-245-0484 or 406-259-4650.

ECM, Inc.
P.O. Box 3493
2720 3rd Ave. North
Billings, MT 59103

