



CONTACT INFORMATION
Mining Records Curator
Arizona Geological Survey
416 W. Congress St., Suite 100
Tucson, Arizona 85701
520-770-3500
<http://www.azgs.az.gov>
inquiries@azgs.az.gov

The following file is part of the
James Doyle Sell Mining Collection

ACCESS STATEMENT

These digitized collections are accessible for purposes of education and research. We have indicated what we know about copyright and rights of privacy, publicity, or trademark. Due to the nature of archival collections, we are not always able to identify this information. We are eager to hear from any rights owners, so that we may obtain accurate information. Upon request, we will remove material from public view while we address a rights issue.

CONSTRAINTS STATEMENT

The Arizona Geological Survey does not claim to control all rights for all materials in its collection. These rights include, but are not limited to: copyright, privacy rights, and cultural protection rights. The User hereby assumes all responsibility for obtaining any rights to use the material in excess of "fair use."

The Survey makes no intellectual property claims to the products created by individual authors in the manuscript collections, except when the author deeded those rights to the Survey or when those authors were employed by the State of Arizona and created intellectual products as a function of their official duties. The Survey does maintain property rights to the physical and digital representations of the works.

QUALITY STATEMENT

The Arizona Geological Survey is not responsible for the accuracy of the records, information, or opinions that may be contained in the files. The Survey collects, catalogs, and archives data on mineral properties regardless of its views of the veracity or accuracy of those data.

Attached / x/; Geochemical Results Attached /x /;
Geophysical Results Attached / /; Geologic Map
Attached / x/; Other / /

HISTORY: Producer / /; Past Producer /x/; Prospect /x /;
Mineral Deposit / /; Mineral Occurrence / /

PRODUCTION (Commodity, Tons, Grade): ?

RESERVES (Commodity, Tons, Grade): Measured / /; Estimated /x / 5-10 million
ton potential

NUMBER OF DRILL HOLES:1

APPROXIMATE TOTAL FOOTAGE: 650'

EXCAVATIONS: Several small pits, several deep shafts(>100')

=====

SECTION 4: GEOLOGIC DATA

COMMODITY: Au,Cu

ORE MINERALS (Major and Minor): Co oxides(Chrysocolla, Malachite)

HOST ROCKS (Major and Minor): fg intrusive dike ofr sill, Qz porphyry,
volcanics?

AGES OF HOST ROCKS: Tertiary?

NATURE OF EXPOSURES: Major zone is +2000' long x up to 200' wide.

ALTERATION: Strong silicification assoc with zone , also sericite, loc. weak
argillic alt within area of mineralized structure


TOTAL EXTENT OF ALTERATION: 50' halo around mineralized zone, and along strike
length.

STRUCTURE: N 70⁰ W to E-W moderate to high angle shear or contact zone

ORE OCCURRENCE: Seemingly associated with specularite and copper oxides in
the mineralized zone

AGE OF MINERALIZATION Tert?:

CONCLUSIONS AND RECOMMENDATIONS: The nature and extent of the structure
suggests the possibility of a mineral resource of 5- 10 million tons with a
w/o ratio of 2-5/1 depending upon the depth of the pit. This certainly
suggests a viable target providing the samples show gold in assay. Assays are
pending. 3/25/92: Assays have been received from the prospect sampling.
Based upon the results of the samples it appears that there is very limited
gold potential. No further work is recommended.

AUTHOR'S SIGNATURE: 

DATE: 3/27/92

COPPEROPOLIS Cu/Au
CASTLE CREEK DISTRICT, YAVAPAI CO, AZ
(Au in ppb, Cu, Pb in ppm or %)
Date of report: 3/26/92

CP-1 Granitic, or volcanic; difficult to tell. Abu limonite, hem spec hem along high angle fractures. Shear zone is striking N 70 W cut by main attitude of N 35 E. 10' rock chip sample taken in small open cut. 214,1483,193

CP-2 Granitic unit, very strong oxidation. Alteration as in CP-1 (see outcrop more in place float. 30' random chip across float/ outcrop. 14,924,37.

CP-3 Granitic? or felsic unit in contact with mafic dike both strongly oxidized. Cu Ox seen on dump but little seen in face. Strike is about E-W 70 S. Small open cut. sample rep. 10' horizontal cut. 65,496,24

CP-4 Granitic? highly oxidized, More silic bands, less spec. little CuOx on dump. caved shaft where the structure becomes much thinner +5'. Sample rep. true thickness of structure. 695,2464,25

CP-5 Same general rock type but zone is south of main zone as described. little CuOx. random chip across scattered oc within a 100' circle. 8,5145,69

CP-6,7,8 FG granitic looking rock, taken across top of the hill. Strong oxid, abundant spec hem, limonite and loc CuOx as chrysocolla. Samples represent a total of 75' of outcrop. 6. 93,4405,42
7. 69,1706,31
8. 75,3532,55

CP-9 Quartz porphyry? Highly altered, argillic? no limonite or other oxidation. Taken in the end of 75' adit. Main structure N 5 E 70 NW. Dump contains abu malachite, chrysocolla. 22,310,13

CP-10 Detailed on attached map. *BEST ZONE 75-100' IN MAIN STRUCTURE RUN 1504 ppb Au.*
OTHERS < 52 ppb Au

CP-11 Same fg granitic unit, strongly oxidized, abu spec hem, wk to mod quartz stockwork, wk CuOx. Rep. 40' of exposed oc taken in two segments. 0-15', 15-40'. 441, 1.16%, 139; 174, 2370, 297

CP-12,13 Fg granitic unit on north end, contact w/ andesitic unaltered volcanics on south end. Zone appears to be 200' wide judging by the outcrop and float Sampled in two places on the north and south extremities. Possible barite seen on southern sample. 12. 28,570,4060
13. 205,2363,49

CP-14 Fg unit looks like a granitic gneiss, three samples taken in this pit

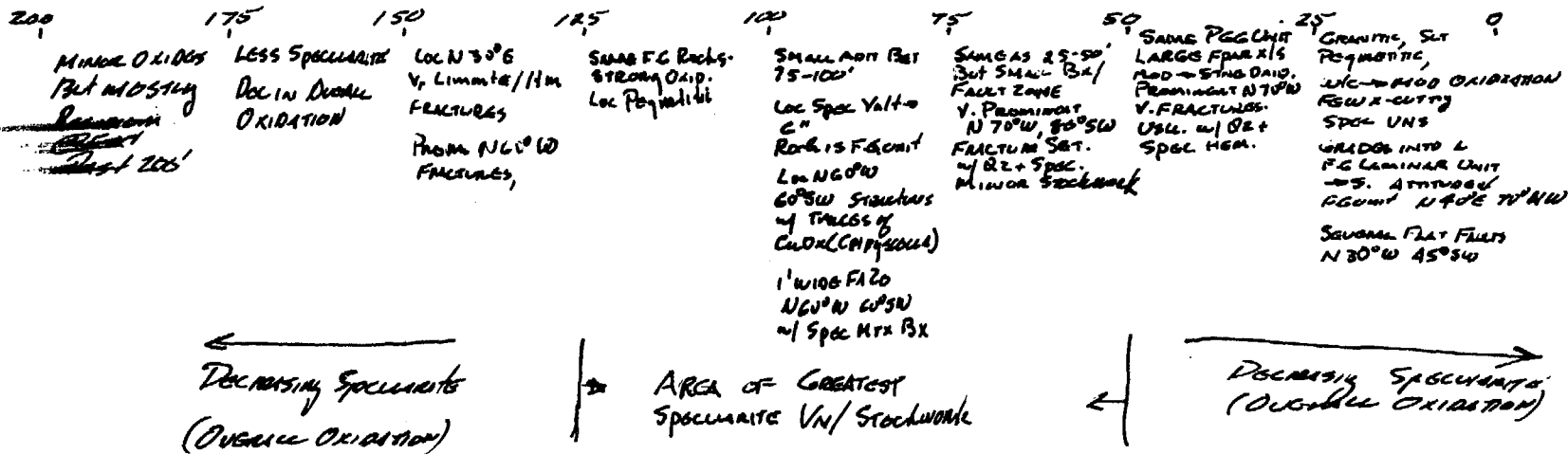
from top to bottom; 0-6, 6-8, 8-10', 6" lead vein seen in pit, prob reason for pit. 19,164,5460; 8,382,8610; 16,151,5660

CP-15 Caved adit, appears to have been driven along a fault zone, fg unit as seen before, possib lead carbonate, Abu silica, spec veins and veinlets. Prominent "bedding is N 30 E, 45 N, structure xcuts regional attitude n 70 W, 50 SW. 31,836,3090

CP-16 same hematitic shear zone, abu silica, specularite, little Cu Ox. same attitde as past reported. Sample rep. 50' of area not all outcrop; two outcrops 10- 15' wide. 420,1546,75

ROCK SAMPLE #'S CP 10 0-200'
(TAKEN IN 25' INCREMENTS)

TRAVERSE THRU ALTERED SHEAR ZONE
LOOKING GENERALLY WEST.



32

33

52

191

1504

11

33

5'

Assay
V. 10/11
PPB's Au

M.M.
1/2 No Scale 1" = 25'
3/12/92

PRELIMINARY REPORT

ASARCO I

MAR 26 1992

REPORT : SP 016169

Page 1 of 2

SW EXPEN

Sample	AU ppm	AG ppm	CU ppm	Pb ppm
CP-1	212	214	1483	193
CP-2	14		924	37
CP-3	65		496	24
CP-4	629	695	2464	25
CP-5	8	45	5145	69
CP-6	93		4405	42
CP-7	69		1706	31
CP-8	75		3253	55
CP-9	22		310	13
CP-10 0-25	51		1532	23
CP-10 25-50	33		513	14
CP-10 50-75	11		1610	19
CP-10 75-100	1360	1504	1.10%	139
CP-10 100-125	196	191	5021	92
CP-10 125-150	52		1110	24
CP-10 150-175	33		966	14
CP-10 175-200	32		514	19
CP-11 0-15	441		1.16%	119
CP-11 15-40	174		2370	297
CP-12 0-30	28		570	4060
CP-13	205	222	2363	49
CP-14 0-6	19		164	5670
CP-14 6-8	8		382	8610
CP-14 8-10	16	21	151	5660
CP-15	31		836	3090

Please refer to the cover sheet for further analysis details.

PRELIMINARY REPORT

REPORT : SP 016169

Page 2 of 2

ASARCO Incorporated
MAR 26 1992
SW

Sample	Ag ppb	Au (P) ppb	Cu ppm	Pb ppm
CP-16	388	420	1546	75

Please refer to the cover sheet for further analysis details.



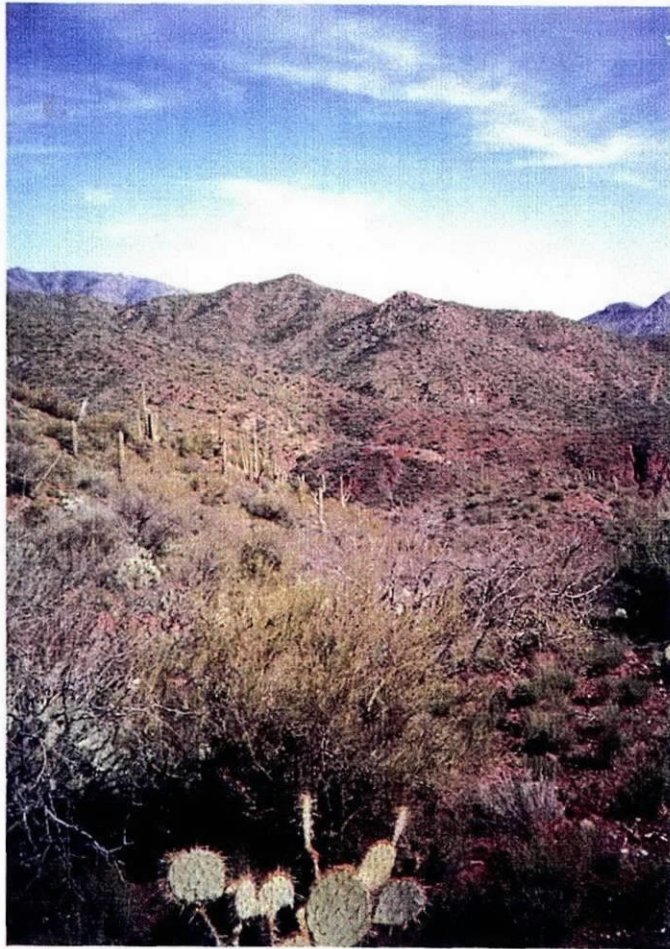
SAMPLE #'S CP 1, 9, 7, 8 LOOKY N ACROSS ZONE



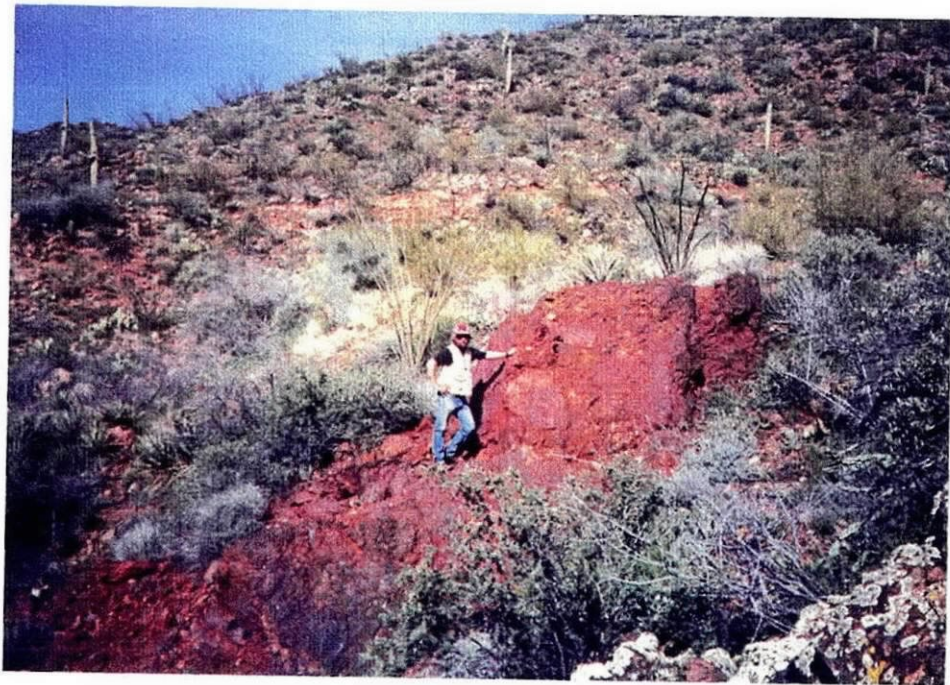
Rocky, Spindly, Vertical Fracture
CP 10, 15-100"



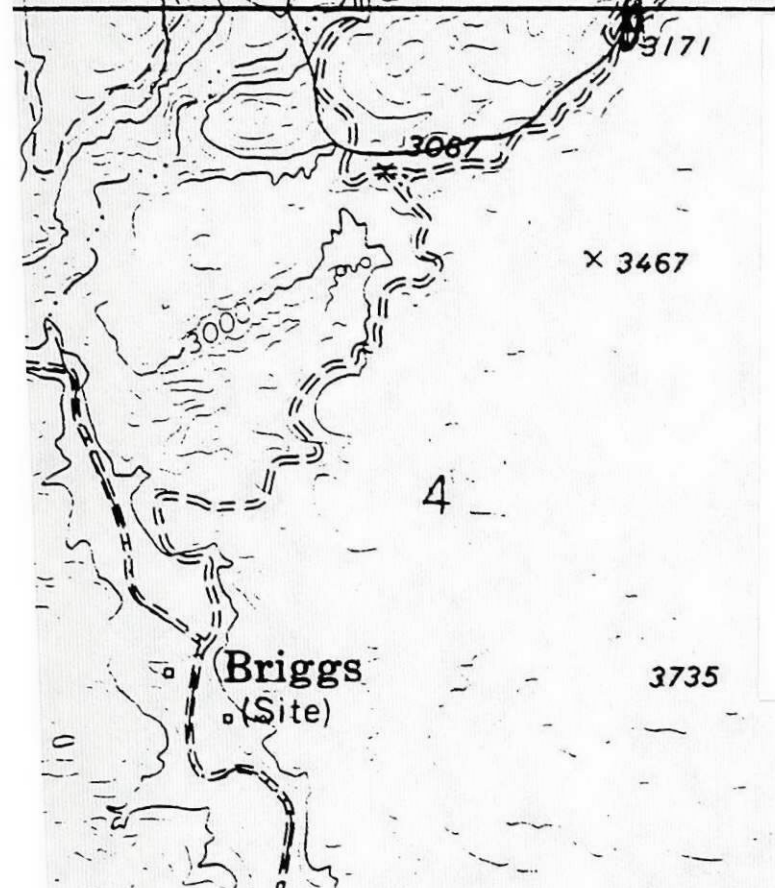
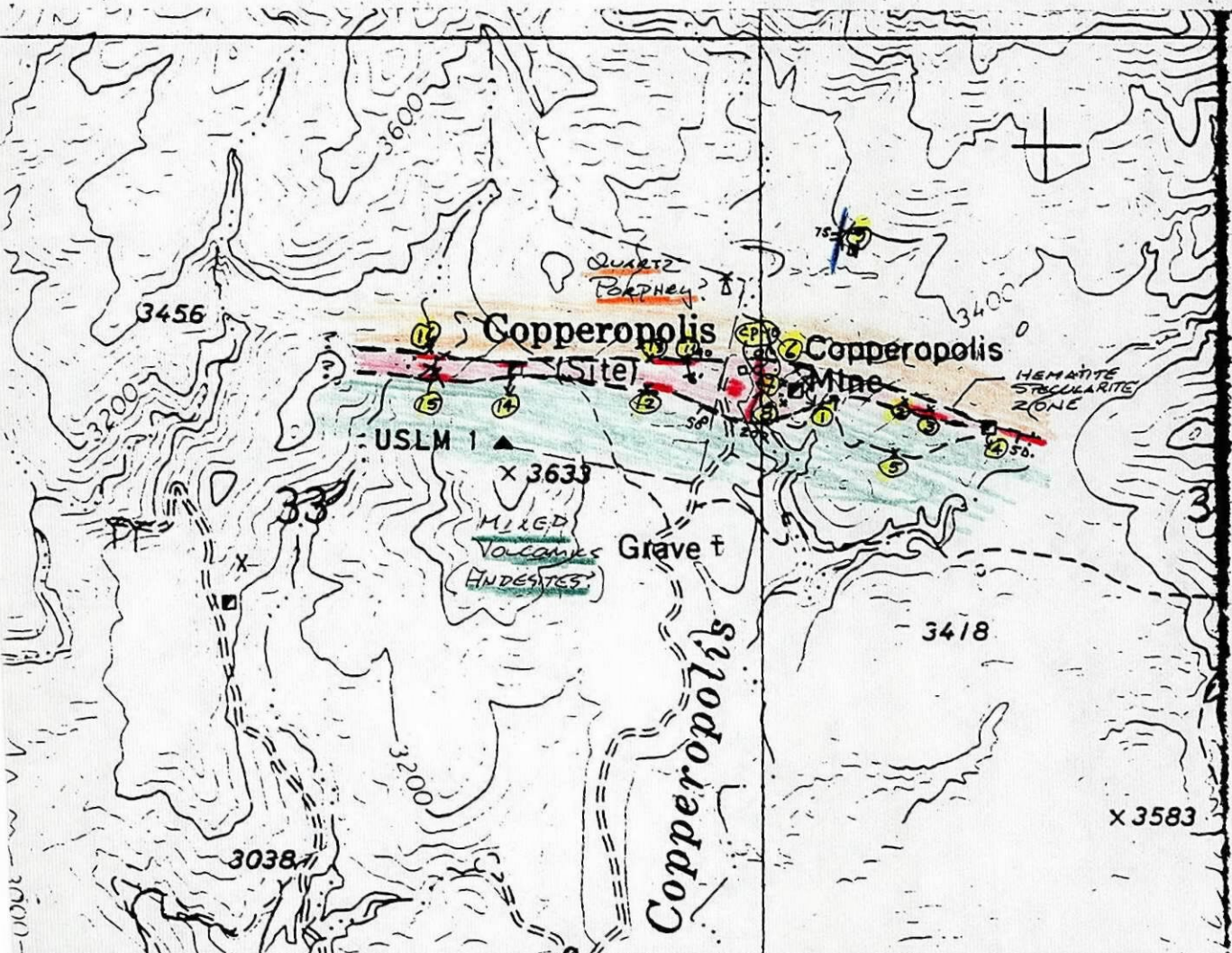
Spindly Fracture Fracture By
Hammer Head CP 10, 75-100"



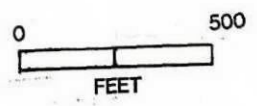
Copperopolis Prospect -
Looking E along strike near Historic
Copper Shanty



Typical outcrop of Haverhill/Spearsville
CPM



Copperopolis
Prospect
T9N, R2W
Section 33,34



COPPEROPOLIS
PROSPECT.
CASTLE CREEK DIST
YAVAPAI CO, AZ
1" = 500'
(CP PREFIX)

PRELIMINARY REPORT

12

RENO: 1500 Glendale Ave, SPARKS 89431
 P.O. Box 71060, RENO 89570
 Ph (702)356 0606 Fax 3561413

ASARCO, INC.

REPORT	: SP 016169	2 Page(s)	Date : 03/26/92
Client reference	: CP-1/16	Project : COPPEROPOLIS	
Cost code	:		
Copies to	: M. MILLER	↔	ASARCO Inc.
	: J.D. SELL		MAR 26 1992
			SW EXP

Samples	: Type	Preparation code
Received	: 03/18/92	-----

Analysis	Code	Quality Parameter	Detection	Units
AU	FA30	Acc. 15 %	5	ppb
AU(R)	FA30	Acc. 15 %	5	ppb
Cu	D210	Prec.10 %	2	ppm
Pb	D210	Prec.10 %	5	ppm

Comments :

DTFS AND D210 RESULTS

Signatory : Jorge Ugarte

PRELIMINARY REPORT

ASARCO I

MAR 26 1992

REPORT : SP 016169

Page 1 of 2

SW EXP... ..

Sample	Au ppm	Ag ppm	Cu ppm	Pb ppm
CP-1	212	214	1483	193
CP-2	14		924	37
CP-3	65		496	24
CP-4	629	695	2464	25
CP-5	8	15	5145	69
CP-6	93		4405	42
CP-7	69		1706	31
CP-8	75		3253	55
CP-9	22		310	13
CP-10 0-25	51		1532	23
CP-10 25-50	33		513	14
CP-10 50-75	11		1610	19
CP-10 75-100	1360	1504	1.10%	139
CP-10 100-125	196	191	5021	92
CP-10 125-150	52		1110	24
CP-10 150-175	33		966	14
CP-10 175-200	32		514	19
CP-11 0-15	441		1.16%	119
CP-11 15-40	174		2370	297
CP-12 0-30	28		570	4060
CP-13	205	222	2363	49
CP-14 0-6	19		164	5670
CP-14 6-8	8		382	8610
CP-14 8-10	16	21	151	5660
CP-15	31		836	3090

Please refer to the cover sheet for further analysis details.

PRELIMINARY REPORT

ASARCO Incorporated

MAR 26 1992

SW LABORATORY

REPORT : SP 016169

Page 2 of 2

Sample	Ag ppm	Au (R) ppb	Cu ppm	Pb ppm
CP-16	388	420	1546	75

Please refer to the cover sheet for further analysis details.

PRELIMINARY REPORT

JDS MB

RENO: 1500 Glendale Ave, SPARKS 89431
P.O. Box 71060, RENO 89570
Ph (702)356 0606 Fax 3561413

ASARCO, INC.

REPORT : 2 Page(s) Date : 03/23/92

Client reference : CP-1/16 Project : COPPEROPOLIS

Cost code :

Copies to : M. MILLER

J.D. SELL

Samples : Type Preparation code
Received : 03/18/92 -----

Analysis	Code	Quality Parameter	Detection	Units
Au	FA30	Acc. 15 %	5	ppb
Au(R)	FA30	Acc. 15 %	5	ppb

Signatory : Jorge Ugarte

PRELIMINARY REPORT

REPORT : SP 016169

Page 1 of 2

Sample	CP	CP(2)
CP-1	212	214
CP-2	14	
CP-3	65	
CP-4	629	695
CP-5	8	45
CP-6	93	
CP-7	69	
CP-8	75	
CP-9	22	
CP-10 0-25	51	
CP-10 25-50	33	
CP-10 50-75	11	
CP-10 75-100	1360	1504
CP-10 100-125	196	191
CP-10 125-150	52	
CP-10 150-175	33	
CP-10 175-200	32	
CP-11 0-15	441	
CP-11 15-40	174	
CP-12 0-30	28	
CP-13	DTF	
CP-14 0-6	19	
CP-14 6-8	8	
CP-14 8-10	16	21
CP-15	31	

Please refer to the cover sheet for further analysis details.

PRELIMINARY REPORT

REPORT : SP 016169

Page 2 of 2

Sample

CP-16

388

420

Please refer to the cover sheet for further analysis details.