



CONTACT INFORMATION  
Mining Records Curator  
Arizona Geological Survey  
416 W. Congress St., Suite 100  
Tucson, Arizona 85701  
520-770-3500  
<http://www.azgs.az.gov>  
[inquiries@azgs.az.gov](mailto:inquiries@azgs.az.gov)

The following file is part of the

James Doyle Sell Mining Collection

### **ACCESS STATEMENT**

These digitized collections are accessible for purposes of education and research. We have indicated what we know about copyright and rights of privacy, publicity, or trademark. Due to the nature of archival collections, we are not always able to identify this information. We are eager to hear from any rights owners, so that we may obtain accurate information. Upon request, we will remove material from public view while we address a rights issue.

### **CONSTRAINTS STATEMENT**

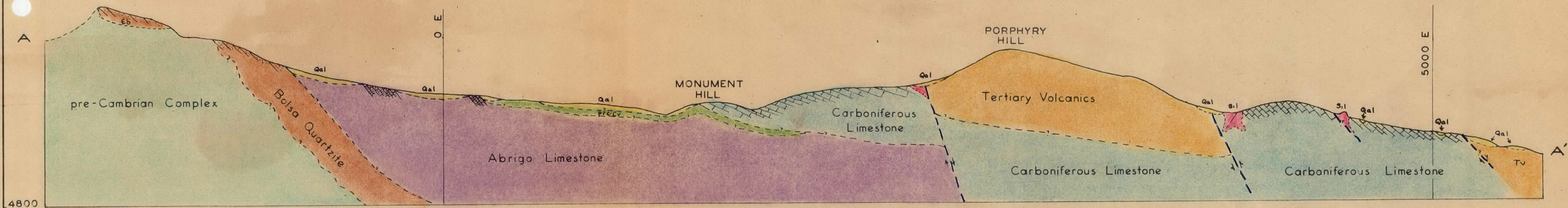
The Arizona Geological Survey does not claim to control all rights for all materials in its collection. These rights include, but are not limited to: copyright, privacy rights, and cultural protection rights. The User hereby assumes all responsibility for obtaining any rights to use the material in excess of "fair use."

The Survey makes no intellectual property claims to the products created by individual authors in the manuscript collections, except when the author deeded those rights to the Survey or when those authors were employed by the State of Arizona and created intellectual products as a function of their official duties. The Survey does maintain property rights to the physical and digital representations of the works.

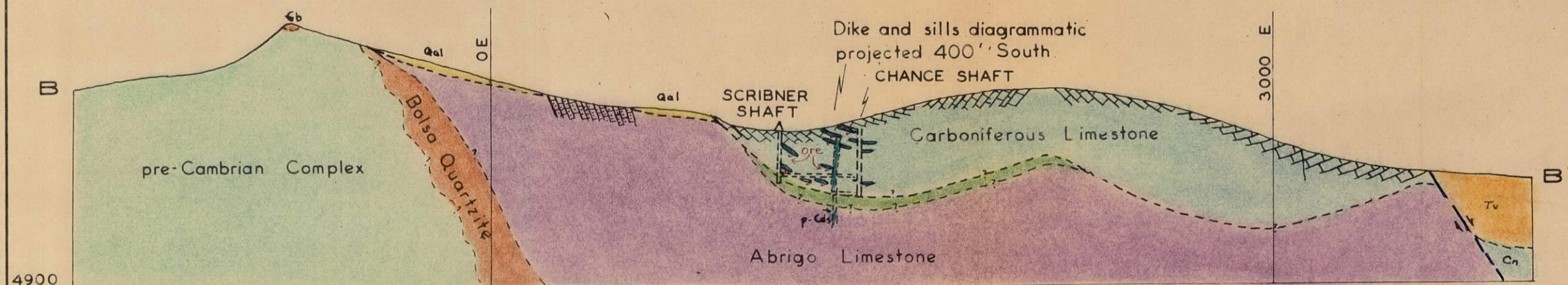
### **QUALITY STATEMENT**

The Arizona Geological Survey is not responsible for the accuracy of the records, information, or opinions that may be contained in the files. The Survey collects, catalogs, and archives data on mineral properties regardless of its views of the veracity or accuracy of those data.





SECTION N 39 E LOOKING NW



SECTION N 69 E LOOKING NW

### EXPLANATION

- |        |  |
|--------|--|
| Qal    | Quaternary Alluvium                        |
| Tv     | Tertiary Volcanics                         |
| p-Cd   | Post Carboniferous Diorite Dikes and Sills |
| Cn     | Carboniferous Limestone                    |
| pre-Cv | Pre Carboniferous Volcanics                |
| Ea     | Cambrian Abrigo Limestone                  |
| Eb     | Cambrian Bolsa Quartzite                   |
| pegs   | Pre-Cambrian Complex                       |
| Sil    | Silicification                             |
| - - -  | Faults                                     |

TO ACCOMPANY Report  
DATED April 12, 1950  
BY H. J. Mac Lean

### VERTICAL SECTIONS

SWISSELM MINING DISTRICT  
COCHISE COUNTY, ARIZONA

SCALE APPROXIMATELY 1" = 500'

Examined for  
American Smelting and Refining Company  
Tucson, Arizona

By H. J. Mac Lean  
J. W. Reinhart

April, 1950

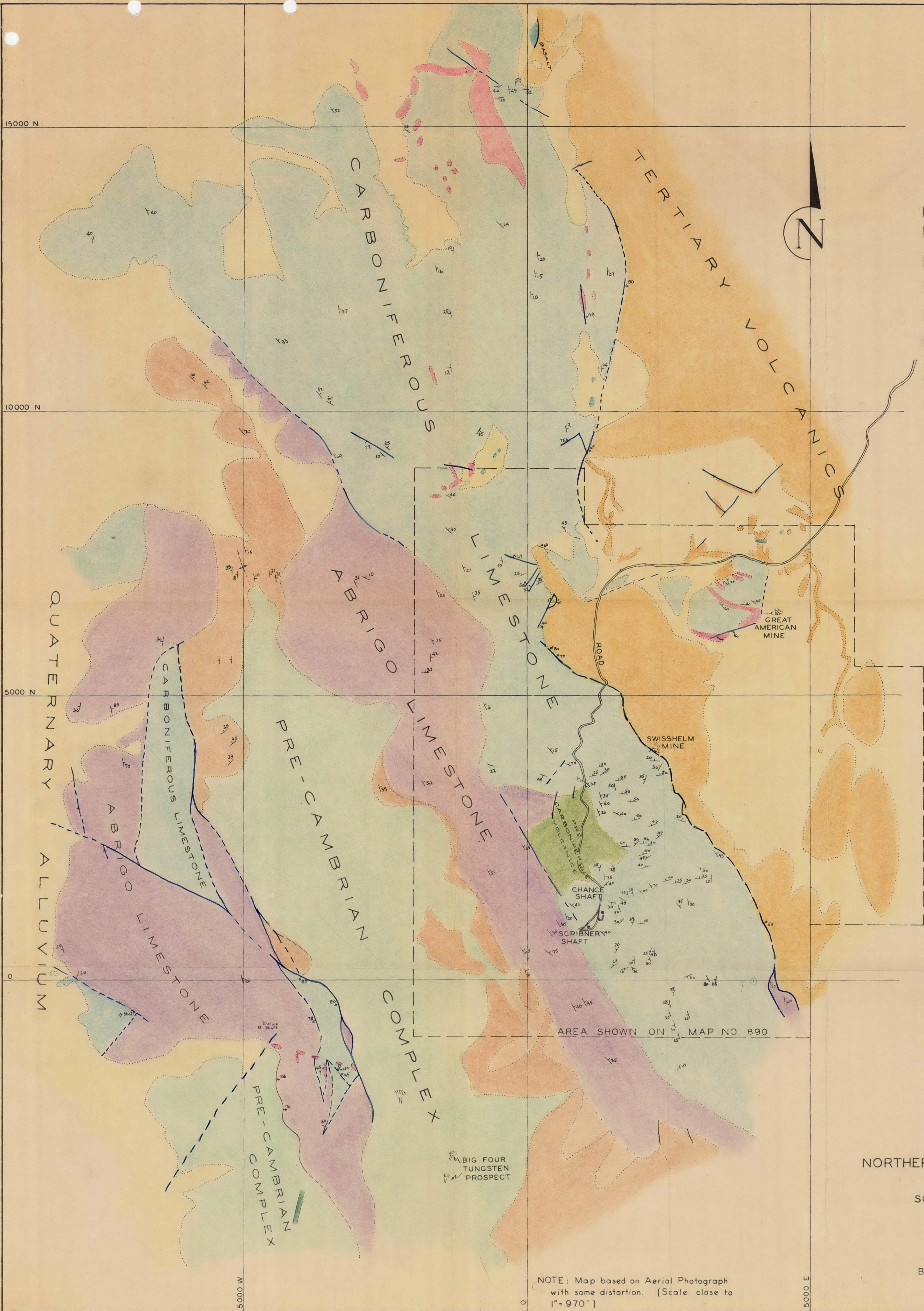
Map No. 891

NOTE: Projected Geology Hypothetical  
Section lines shown on Map No. 890









- EXPLANATION
- Quaternary Alluvium
  - Late Tertiary Diorite and Diabase Dike
  - Tertiary Quarts Latite and Andesite Flow, Agglomerate and Tuffs
  - Carboniferous Limestone
  - Pre Carboniferous Andesite Flow, Agglomerate and Tuffs
  - Cambrian Abrigo Limestone
  - Cambrian Bolsa Quartzite
  - Pre-Cambrian Granitic and Schistose Complex
  - Silicification
  - Faults showing dip

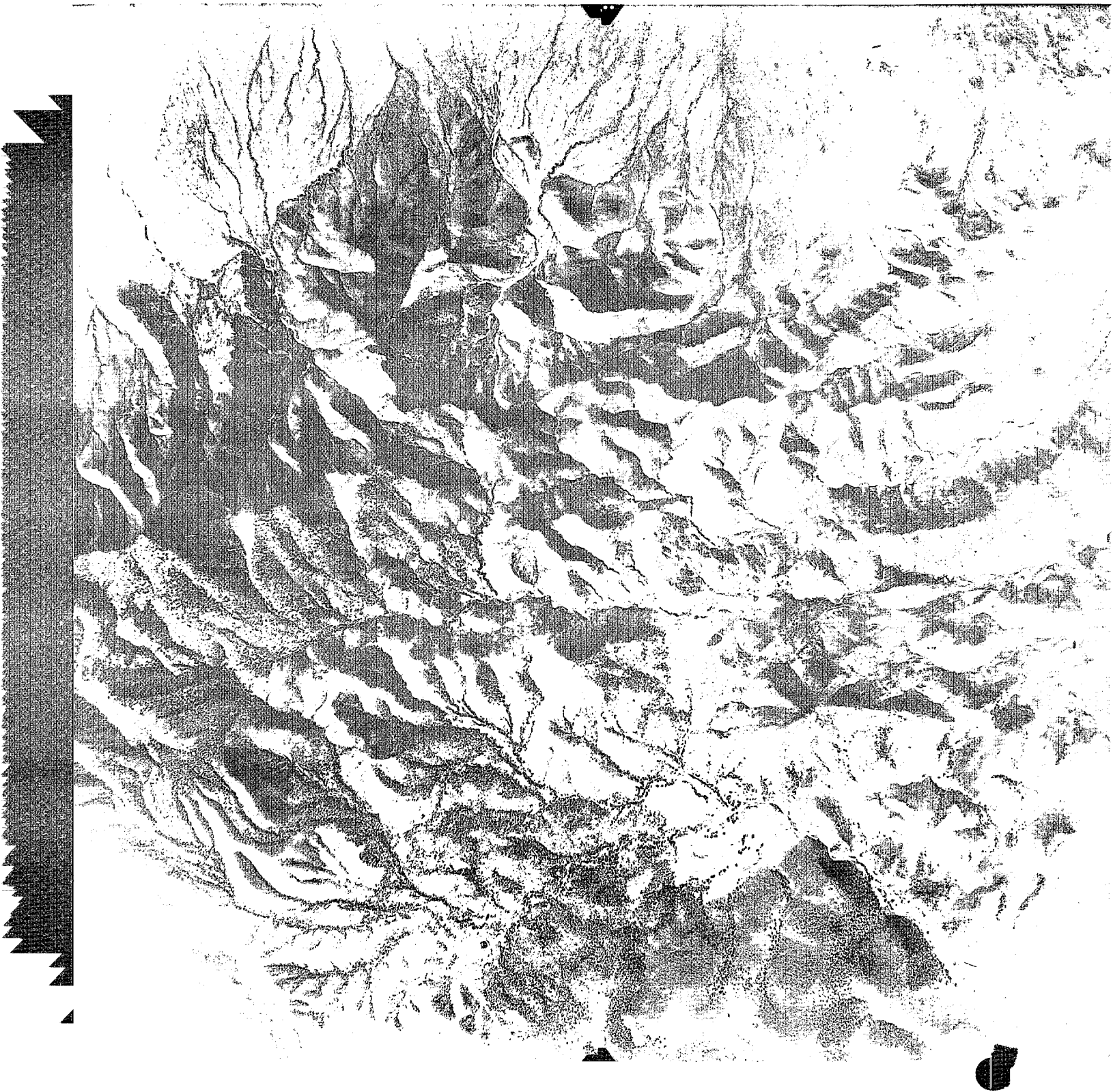
TO ACCOMPANY Report  
DATED April 12, 1950  
BY H. J. Mac Lean

GEOLOGIC MAP  
NORTHERN SWISSELM MINING DISTRICT  
COCHISE COUNTY, ARIZONA  
SCALE APPROXIMATELY 1" = 1000'  
Examined for  
American Smelting and Refining Company  
Tucson, Arizona

By H. J. Mac Lean  
J. W. Reinhart  
April, 1950  
Map No. 889

NOTE: Map based on Aerial Photograph  
with some distortion. (Scale close to  
1" = 970')





APR 22 1950

*File* L. K. W.

*Ma-3.19.0.*



*Approx. 1" = 2750'*