



CONTACT INFORMATION
Mining Records Curator
Arizona Geological Survey
416 W. Congress St., Suite 100
Tucson, Arizona 85701
520-770-3500
<http://www.azgs.az.gov>
inquiries@azgs.az.gov

The following file is part of the

James Doyle Sell Mining Collection

ACCESS STATEMENT

These digitized collections are accessible for purposes of education and research. We have indicated what we know about copyright and rights of privacy, publicity, or trademark. Due to the nature of archival collections, we are not always able to identify this information. We are eager to hear from any rights owners, so that we may obtain accurate information. Upon request, we will remove material from public view while we address a rights issue.

CONSTRAINTS STATEMENT

The Arizona Geological Survey does not claim to control all rights for all materials in its collection. These rights include, but are not limited to: copyright, privacy rights, and cultural protection rights. The User hereby assumes all responsibility for obtaining any rights to use the material in excess of "fair use."

The Survey makes no intellectual property claims to the products created by individual authors in the manuscript collections, except when the author deeded those rights to the Survey or when those authors were employed by the State of Arizona and created intellectual products as a function of their official duties. The Survey does maintain property rights to the physical and digital representations of the works.

QUALITY STATEMENT

The Arizona Geological Survey is not responsible for the accuracy of the records, information, or opinions that may be contained in the files. The Survey collects, catalogs, and archives data on mineral properties regardless of its views of the veracity or accuracy of those data.

AMERICAN SMELTING AND REFINING COMPANY
Tucson Arizona

November 23, 1966

J. H. C.

NOV 32 1966

TO: J. H. COURTRIGHT

FROM: J. R. WOJCIK

GEOPHYSICAL FILE
Lon Stringfield -
American Ranches
Yavapai Co., Arizona

~~WES BAN~~
READ AND RETURN
PREPARE ANSWERS HANDLE
FILE ☒ INITIALS

Sec. 11
T15N, R3W.

In the course of helicopter reconnaissance north of Prescott on October 12, 1966, B. Watson and J. Wojcik examined a very weakly altered area of granite that appeared to increase in width to the northeast as it went under cover. The hills are lightly stained reddish from the breakdown of the ferromagnesian minerals and contain minor quartz veinlets. The feldspars are sufficiently altered to clays to permit a smoothly weathered outcrop pattern as contrasted to the blocky pattern of the unaltered rock. No evidence of sulfide mineralization or copper stain was noted. Granite bedrock should not be buried deeply for some distance to the east so geophysical investigation should determine the merit of this altered zone.

J. R. Wojcik

J. R. WOJCIK

JRW/kw

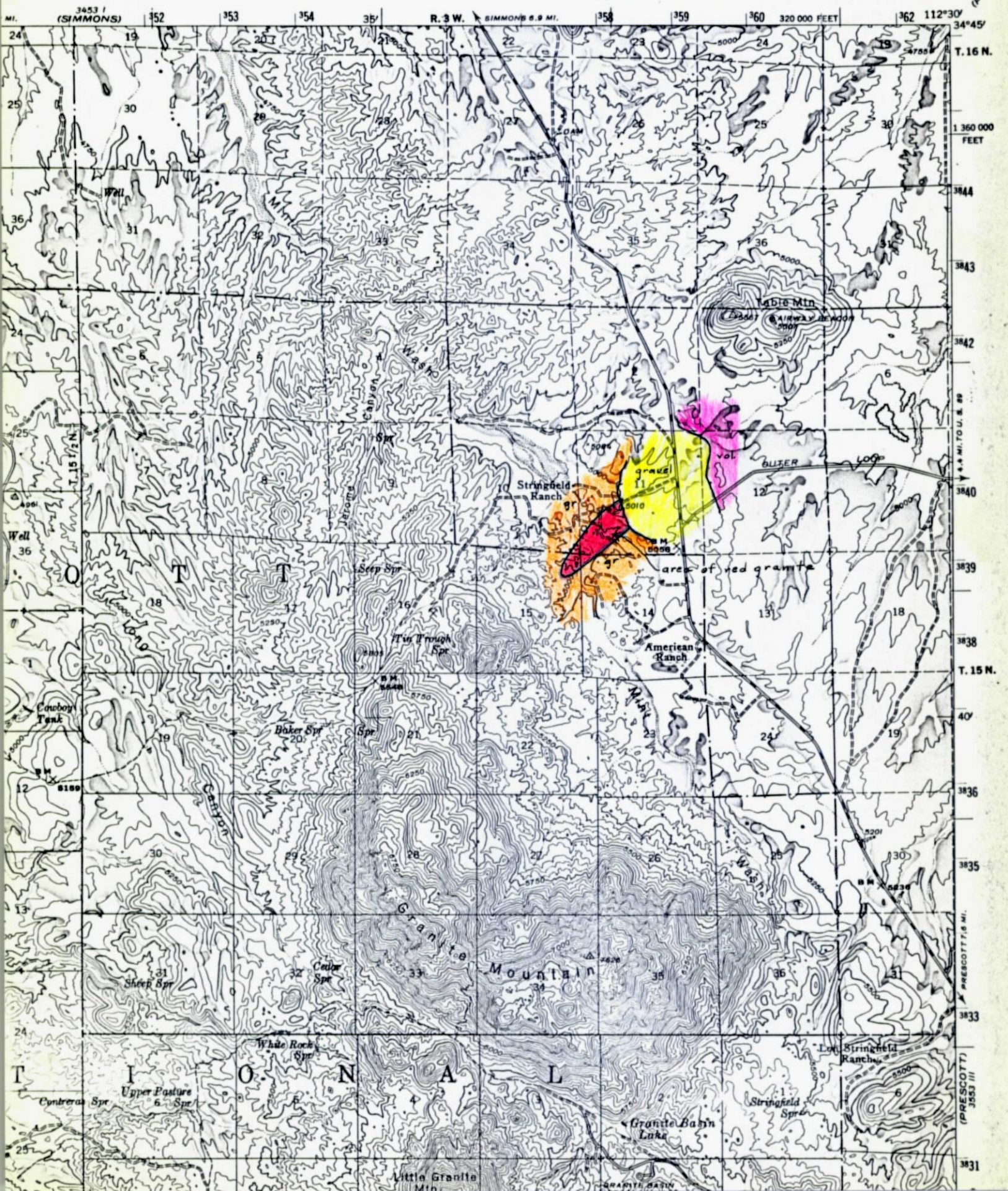
Attachment: map

~~Route~~ to WGFarley

Copy

UNITED STATES
DEPARTMENT OF AGRICULTURE
FOREST SERVICE

IRON SPRINGS QUADRANGLE
ARIZONA-YAVAPAI CO.
15 MINUTE SERIES (TOPOGRAPHIC)



J. H. Courtright

RECEIVED

OCT 11 1971

EXPLORATION DEPT.

J. H. C.

NOV 1 1971

Air Mail

October 6, 1971

Mr. C. K. Moss
Chief Geophysicist
Asarco - Salt Lake City

Dear Cal:

Although your letter of September 14 deals with a specific proposal for additional IP surveys in Arizona, it poses problems of exploration philosophy which are of general concern.

Fundamentally, we do not believe that our search for minerals can or should be split into separate categories of "geological exploration" and "geophysical exploration." We realize that in attempting to generate worthwhile exploration projects, which is the concern of all of us, it is natural for those with dominantly geophysical or geological backgrounds to think along somewhat different lines. However, there are a great many other disciplines also involved to some extent in any exploration program (law, economics, chemistry, etc.) and we are organized to apply all of them through our regional offices.

From the above it follows that, although we urge you and your expert staff to attempt to work up possible exploration projects anywhere in the world, these will have to have the approval and backing of the division supervisors. Geophysical proposals for field work will need the cooperation of the regional office.

The multidiscipline approach should of course work in both directions, and we expect the supervisors and local staffs to give sound reasons for or against the use of geophysical techniques. They must not sidestep your proposals since they have responsibility for their regions.

Very truly yours,

Original Signed By
John J. Collins

John J. Collins

CC-Division Supervisors (USA only)

J. H. C.
SEP 2 1971

August 12, 1971

MEMORANDUM

TO: Geologists

FROM: W. L. Kurtz

ASARCO I.P. SURVEYS

During the last several years, many, many line miles of I.P. have been conducted in the southwest by our Asarco I.P. crew working out of the Tucson office. The coverage has been on a day in day out basis, in a blind pediment or blanket coverage approach. In spite of the fact many of these surveys have been conducted along "porphyry copper lineaments" or "magnetic gradients", no good drilling targets have been generated. Because of this fact, in a month or so, I am terminating the I.P. crew based in Tucson.

Henceforth, I.P. work will be done only in those areas - - - usually of restricted size, recommended by you, and approved by me. The physical surveys will be conducted by one of the local contractors, or "in-house" by our Salt Lake office.

W L Kurtz
W. L. Kurtz

WLK:van

cc: JJCcollins
JHCourtright
CKMoss
KAvondenSteinen