



CONTACT INFORMATION
Mining Records Curator
Arizona Geological Survey
416 W. Congress St., Suite 100
Tucson, Arizona 85701
602-771-1601
<http://www.azgs.az.gov>
inquiries@azgs.az.gov

The following file is part of the JABA, Inc. Tombstone Mining Records

ACCESS STATEMENT

These digitized collections are accessible for purposes of education and research. We have indicated what we know about copyright and rights of privacy, publicity, or trademark. Due to the nature of archival collections, we are not always able to identify this information. We are eager to hear from any rights owners, so that we may obtain accurate information. Upon request, we will remove material from public view while we address a rights issue.

CONSTRAINTS STATEMENT

The Arizona Geological Survey does not claim to control all rights for all materials in its collection. These rights include, but are not limited to: copyright, privacy rights, and cultural protection rights. The User hereby assumes all responsibility for obtaining any rights to use the material in excess of "fair use."

The Survey makes no intellectual property claims to the products created by individual authors in the manuscript collections, except when the author deeded those rights to the Survey or when those authors were employed by the State of Arizona and created intellectual products as a function of their official duties. The Survey does maintain property rights to the physical and digital representations of the works.

QUALITY STATEMENT

The Arizona Geological Survey is not responsible for the accuracy of the records, information, or opinions that may be contained in the files. The Survey collects, catalogs, and archives data on mineral properties regardless of its views of the veracity or accuracy of those data.

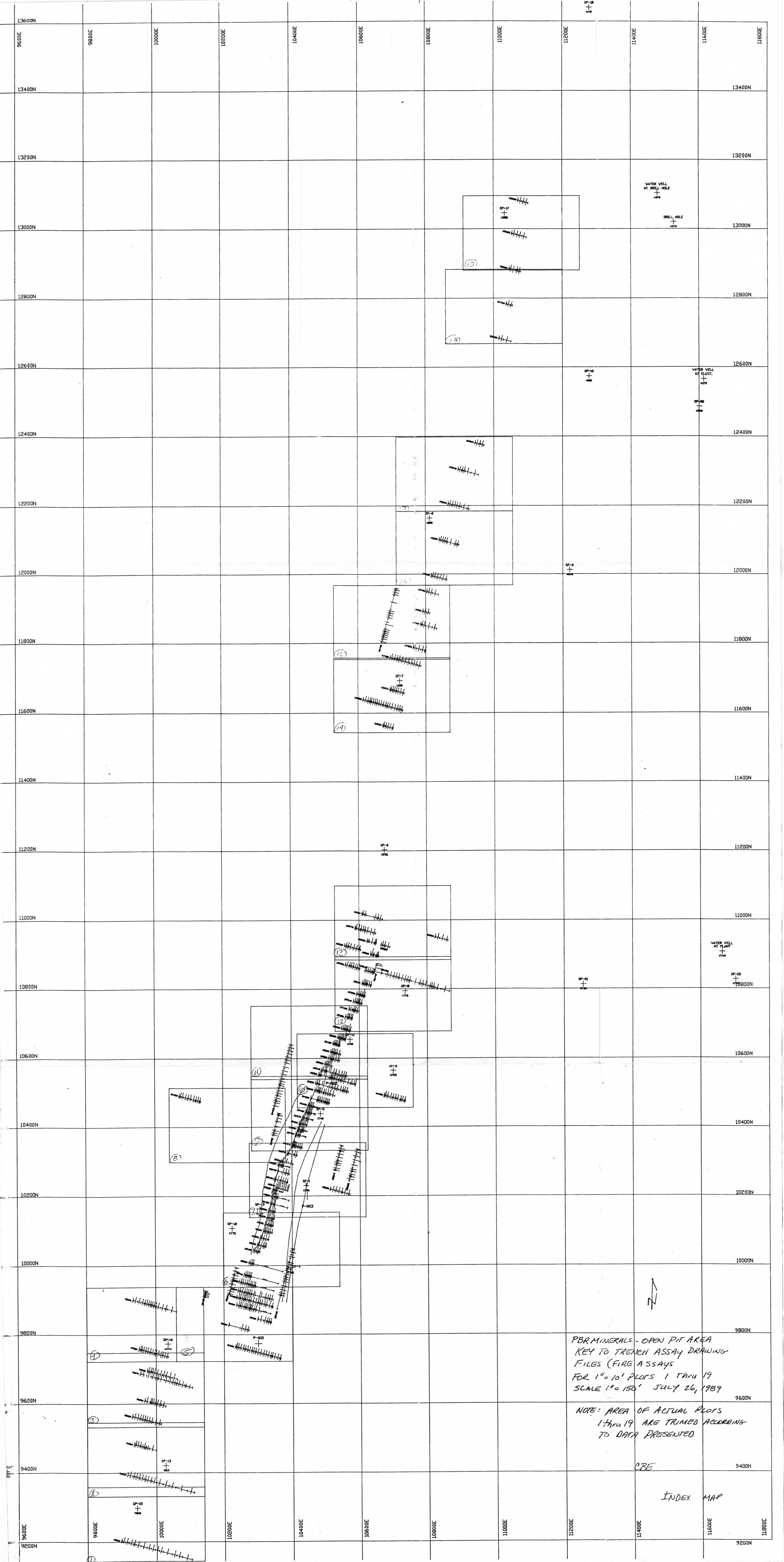
VOLUME 3
BOOK ~~13~~ 19

219

**TOMBSTONE MINING DISTRICT
COCHISE CO., ARIZONA**

**PBR, INC.
TRENCHING DATA & MAPS**

**COPY #2
MVP/TOMBSTONE OFFICE**



SP-15

4826

10000E

9203N

AU Ag

TR 0.06

TR 0.04

TR 0.10

.004 0.21

.002 0.09

TR 0.14

TR 0.02

TR 0.04

.001 0.16

TR 0.09

TR 0.07

TR 0.09

TR 0.05

TR 0.05

N

9200N
MAP#1
SCALE: 1"=10'
DATE: 7/26/89
CBE

MAP#1

9900E

9500N

9482N

Au Ag

.003 0.14

.001 0.12

.002 0.06

TR TR

TR 0.09

TR TR

TR TR

.004 0.42

10000E

.007

.01

.0

.005 0.

10100E

9500N

SP-13

4810

9400N

9394N

Au Ag

.002 0.24

.006 0.37

.002 0.30

.003 0.44

.006 0.51

.002 0.06

.004 0.08

.003 0.07

.008 0.43

.000 0.08

.000 0.15

.000 0.07

.003 0.12

.000 0.11

2000E

10000E

10000E

N

MAP #2

SCALE: 1" = 10'

DATE: 7/26/89

C.B.E.

9200E

90100E

9700N

9700N

9687N
Au Ag
0.003 0.18 0.51

TR 0.10 TR 0.03
TR 0.03 0.31
TR 0.05 0.44
TR 0.04 0.17
TR 0.10
TR 0.04 TR 0.10
TR 0.07 TR 0.09
TR 0.08
TR 0.11 TR 0.12
TR 0.07
TR 0.14 TR 0.07
TR 0.03 0.11
TR 0.15
TR 0.05 0.47
TR 0.05
TR TR
TR TR

9600N

9600N

9609N
Au Ag
TR 0.11

TR 0.09
TR 0.10
TR 0.01 0.14
TR 0.04 0.22
TR 0.02 0.18
TR 0.04 0.26
TR 0.02 0.08

9563N
Au Ag
TR 0.06

TR 0.01 0.15
TR 0.16
TR 0.14
TR 0.14
TR 0.03 0.26
TR 0.06 0.21
TR 0.12 0.70
TR 0.07 0.38
TR 0.05 0.31



MAP #3
SCALE: 1" = 10'
DATE: 7/26/89
CBE

9200E

90100E

9900N

Au Ag

.003 0.28

.008 0.55

.005 0.22

.004 0.26

TR 0.18

.004 0.28

.006 0.45

.008 1.13

.004 0.26

.004 0.35

TR 0.10

TR 0.05

.003 0.14

TR 0.05

9800N

9800N

SP-16

+

4774

9750N

Au Ag

TR 0.11

.002 0.21

.002 0.39

.005 0.53

TR 0.17

TR 0.08

TR 0.06

TR 0.10

TR 0.06

TR 0.12

TR 0.05

.009 0.54

.005 0.21

.020 0.80

N

MAP# 4
SCALE 1"=10'
DATE 7-26-89
BAILEY ESCARPMENT

9900N
10142E
Au Ag
.010 0.52
.016 0.26
.132 0.32
.020 0.04

10200E

10216E
9927N
9908N
Au Ag
.022 0.30
.004 0.17
.000 0.14
.000 0.25
.006 0.46
.000 0.14
.004 0.56
.000 0.26
.000 0.29
.000 0.22
.018 0.64
.012 0.32
.024 0.92
.020 1.08
.020 0.60
.018 0.64

9886N
Au Ag
.020 0.18
.022 0.20
.016 0.10
.016 0.09
.020 0.18
.014 0.14
.016 0.16
.016 0.24
.020 0.24
.020 0.20
.003 0.11
.010 0.12
.004 0.13
Fill

9845N
Au Ag
.010 0.15
.012 0.14
.010 0.14
.016 0.20
.011 0.18

9828N
Au Ag
.008 0.35
.004 0.20
.010 0.20

P-801

9765N
Au Ag
.006 0.02
.008 0.03
.002 0.02
.002 0.02
.006 0.52
.000 0.02
.002 0.02
.002 0.10
.000 0.01
.000 0.05
.000 0.04
.000 0.04
.000 0.03
.000 0.03
.012 0.22
.008 0.10
.020 0.16
.017 0.08
.003 0.10
.005 0.12

10300E

MAP #5
SCALE: 1"=10'
DATE: 7/26/89
CBE

10400E
9900N
0.003 0.09
0.005 0.11
0.005 0.34
Fast Pit Road

Fast Pit Road

9900N

10400E

SP-12

10,100N

4773

10'

10043N

10017

10008N

10,000N

Au Ag

.006 0.14

.008 0.14

.020 0.31

.006 0.08

.002 0.14

.004 0.14

9973N

Au Ag

.004 0.10

.010 0.82

.010 0.10

.010 0.64

.008 0.86

Au Ag

.002 0.06

.004 0.08

.004 0.14

.088 0.54

.068 20.00

.008 1.04

.008 1.88

.12 1.00

0 0.46

10,300E

10120N

10100N

10080N

10060N

WEST PT
TOE

Au Ag

.004 0.02

.006 0.12

.014 0.58

Fill

Au Ag

.000 0.01

.004 0.02

.004 0.02

.004 0.06

Fill

Au Ag

.008 0.08

.002 0.04

.004 0.32

Fill

Fill

Fill

Au Ag

.03 0.62

.010 0.10

.010 0.10

.011 0.08

.016 0.10

.010 0.5

Fill

Au Ag

.002 0.02

.006 0.06

.006 0.26

.006 3.68

.008 8.80

Fill

Au Ag

.004 0.02

.006 0.12

.014 0.58

Fill

Au

Ag

.004 0.06

.010 0.08

.022 0.50

.007 0.09

.020 0.11

.042 0.08

.006 0.15

.001 0.23

.001 0.10

.006 0.10

.004 0.22

.007 0.10

East Pt Toe

East Pt (West)

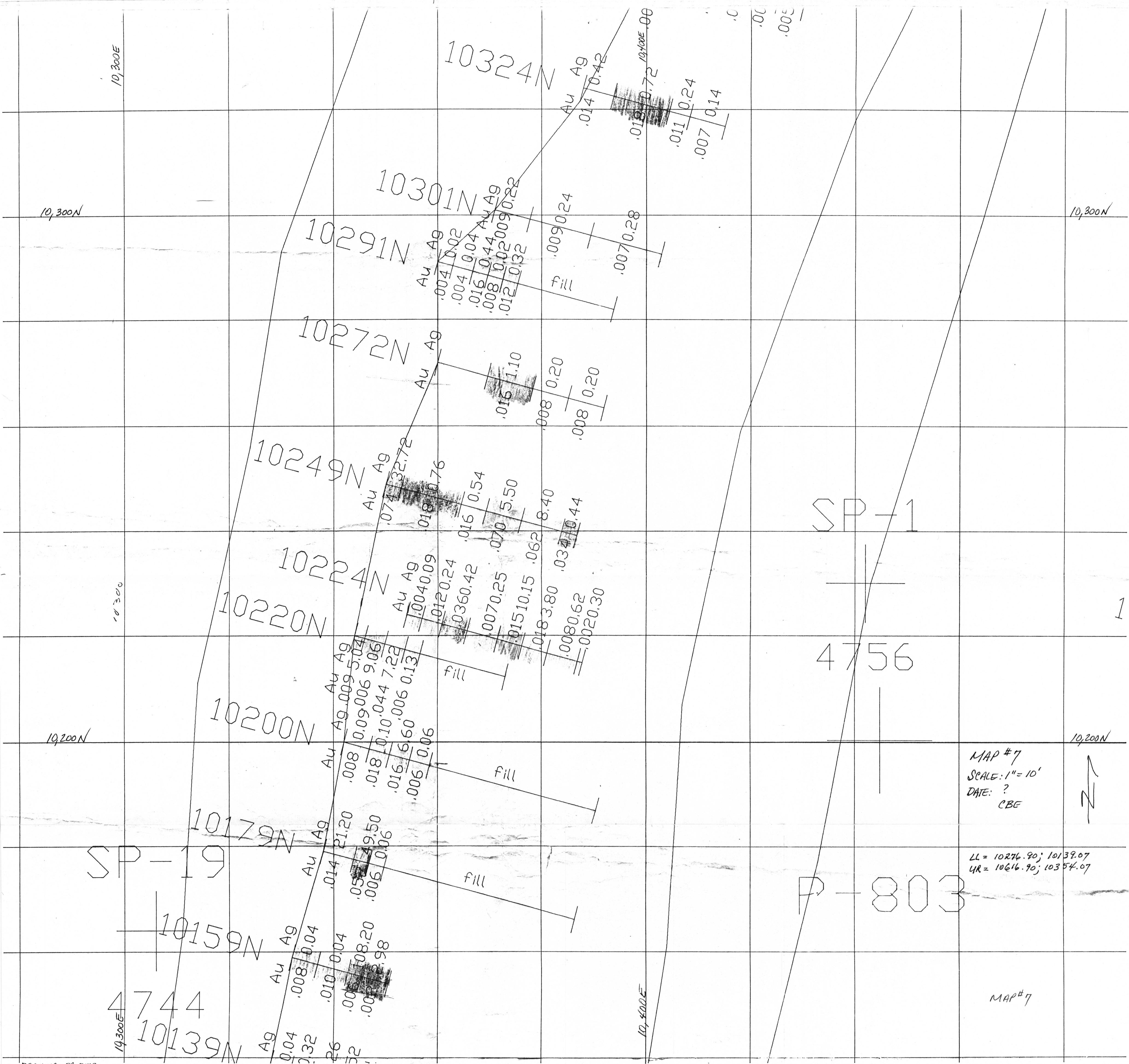
10,400E

SP-4

4726

N

MAP# 6
SCALE: 1"=10'
DATE: 7/26/89
CBE



10,500 N

10,500 N

10490N

Au Ag
0.020 0.22

0.012 0.12

0.008 0.11

0.024 0.36

0.020 0.20

0.022 0.21

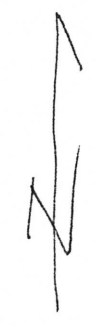
0.022 0.22

0.026 0.45

0.020 0.13

10,100 E

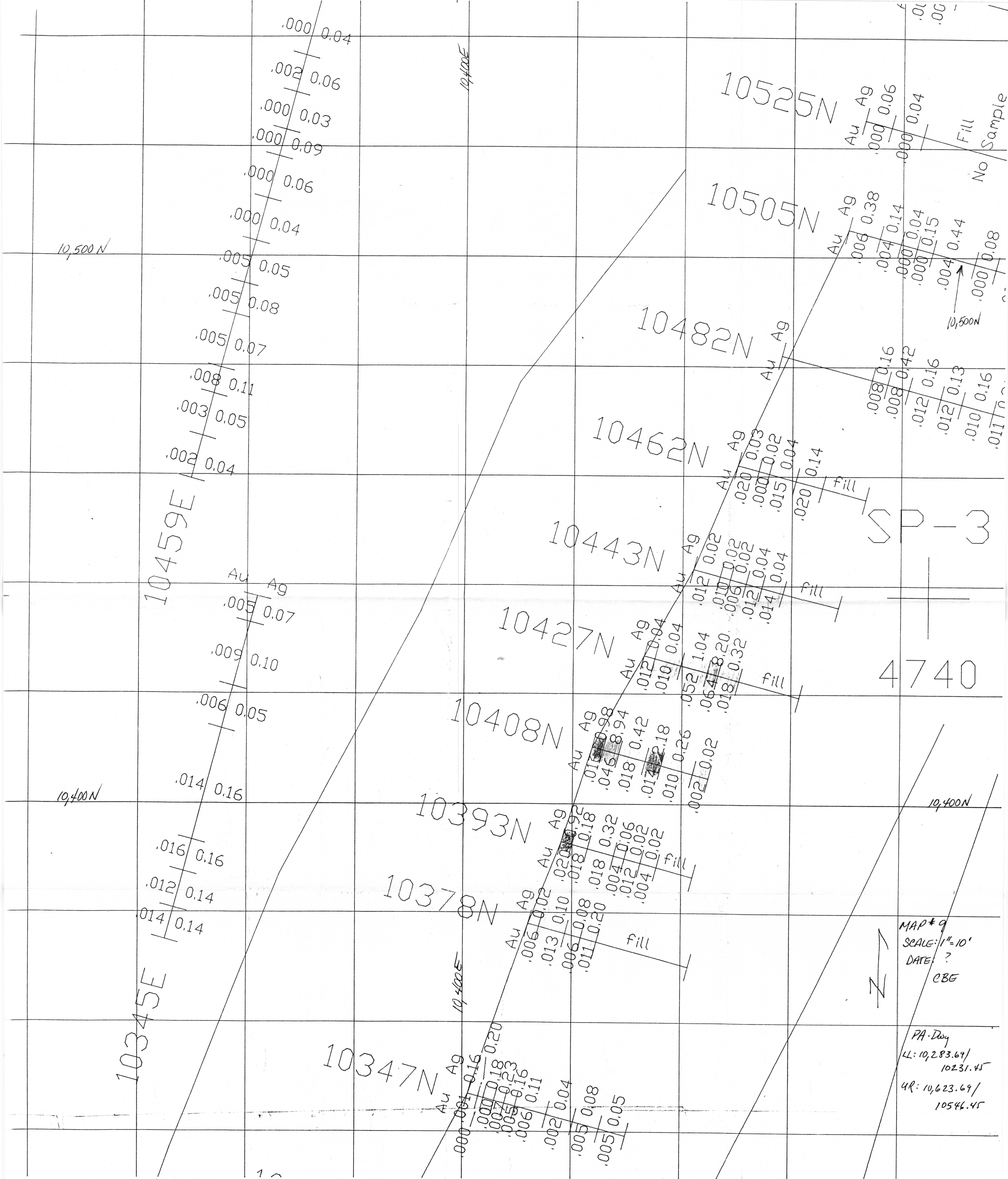
10,100 E



MAP # 8
SCALE: 1" = 10'
DATE: ?
CBE
PA Dwg
LL: 10,041.67 / 10,297.50
UR: 10,381.67 / 10,512.50

10,400 N

10,400 N



SP-3

4740

MAP# 9
SCALE: 1"=10'
DATE: ?
CBE

PA- Day
LL: 10,283.69/
10231.45
QR: 10,623.69/
10546.45

10462N

10482N

10505N

10525N

10550N

10564N

10582N

10600N

10618N

10642N

10660N

Au Ag
0.020 0.003
0.001 0.002
15 0.04
10 0.14
Fill

.008 0.16
.008 0.42
.012 0.16
.012 0.13
.010 0.16
.011 0.28
.012 0.20
.014 0.14
.030 0.49

Au Ag
.006 0.38
.004 0.14
.000 0.04
.004 0.44
.000 0.08
.000 0.18
.005 0.73
.004 0.35
.000 0.07

Fill
No Sample
P 8002
.003 0.28
.002 0.15
.000 0.09
.000 0.04

Au Ag
.003 0.06
.005 0.04
Fill
No Sample
No Sample
.000 0.00
.000 0.00
.000 0.00
.000 0.00
.002 0.05
.001 0.08
.000 0.09
.000 0.04

Au Ag
.000 0.04
.000 0.05
Fill
No Sample
No Sample
.000 0.00
.000 0.00
.000 0.00
.000 0.00
.002 0.16
.002 0.08

Au Ag
.002 0.04
.004 0.04
.002 0.08
No Sample
.006 11.88

Au Ag
.002 0.10
.000 0.12
No Sample
.002 0.22
.001 0.14

Au Ag
.002 0.04
.002 0.08
.002 0.10
.002 1.08
.004 0.16

Au Ag
.000 0.04
.002 0.10
.035 0.06
No Sample
.008 0.54

Au Ag
.000 0.02
.000 0.06
.000 0.09
.003 0.10
No Sample
.005 1.04

.000 0.11

.000 0.03
.000 0.16
.000 0.12

.000 0.01
.000 0.01
Fill
No Sample

10490N

Au Ag
.020 0.22
.012 0.12
.008 0.11
.024 0.36
.020 0.20
.022 0.21
.022 0.22
.026 0.45

MAP # 10
SCALE: 1"=50'
DATE: 8/3/89
CBE
PA. DWG
LL: 10,419.14/
10,455.95
QR: 10,757.14/
10670.95

SP-2

4739

4710

SP-11

10,600N

10,600N

10,600E

10,600E

10,700E

10,500N

10,500E

10,400E
10,700N
10,600N
10,400E
Au Ag
0.000 0.04
0.000 0.02
0.000 0.07
0.002 0.04
0.002 0.12
0.00 0.03
0.000 0.06
0.004 0.08
0.000 0.05
0.000 0.04

10550N

10564N

10582N

10600N

10618N

10642N

10660N

10686N

10720N

10742N

Au Ag
0.003 0.06
0.005 0.04

Au Ag
0.000 0.04
0.000 0.02

Au Ag
0.002 0.04
0.004 0.04
0.002 0.08
No Sample
0.006 11.88

Au Ag
0.002 0.10
0.000 0.12

Au Ag
0.002 0.04
0.002 0.08
0.002 0.10
0.002 1.08

Au Ag
0.000 0.04
0.002 0.10
0.035 0.06
No Sample
0.008 0.54

Au Ag
0.000 0.02
0.000 0.06
0.000 0.09
0.003 0.10
No Sample
0.005 1.04

Au Ag
0.000 0.04
0.000 0.05
0.000 0.06
0.000 0.14
No Sample
0.005 0.30

Au Ag
TR 0.08
TR 0.06
TR 0.02
TR 0.02
TR 0.07

Au Ag
TR 0.03
TR 0.02
TR 0.06
0.002 0.13

SP-11

4710

MAP #11
SCALE: 1"=10'
DATE: 8/3/89
CBE

PA-Dug
LK: 10,283.69 / 10,537.44
UR: 10,623.69 / 10,752.44

N

10869N

Au Ag
.008 0.67
.010 .010
.010 0.40
.009 0.25
.008 0.22
.006 0.14
.005 0.14

10854N

Au Ag
TR 0.06
TR 0.14
.014 2.10
TR 0.14
TR 0.05
.002 0.16
.003 0.20
.002 0.21

10846N

Au Ag
.014 0.12
.008 0.10
.012 0.14
.016 0.20
.018 0.14
.002 0.06
.013 0.34
.007 0.11
.012 0.74
.006 0.14
.004 0.10
.003 0.48
.001 0.23
.000 0.09
.000 0.11
.000 0.08
.000 0.08

10817N

Au Ag
TR 0.06
TR 0.05
.002 0.12
.008 0.90
.004 0.22
.002 0.14

10644E

10,800N

10785N

Au Ag
.000 0.09
.000 0.06
.000 0.10
No Sample
.018 0.98

10764N

Au Ag
.000 0.06
.000 0.08
.000 0.12
.000 0.36
.022 1.68

10742N

Au Ag
TR 0.03
TR 0.02
TR 0.06
.002 0.13
.004 0.20

10720N

Au Ag
TR 0.08
TR 0.06
TR 0.02
TR 0.02
TR 0.07

10,700N

10866N

Au Ag
.000 0.04
.000 0.05
.000 0.06
.000 0.14
No Sample
579.30

10,600E

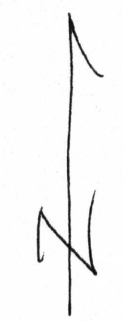
10,700E

10,700N

10,800E

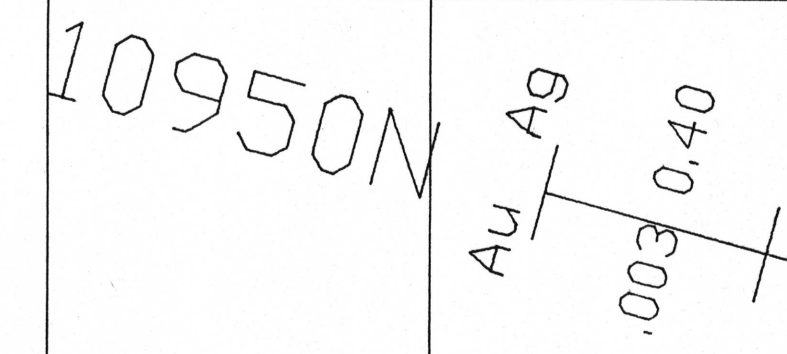
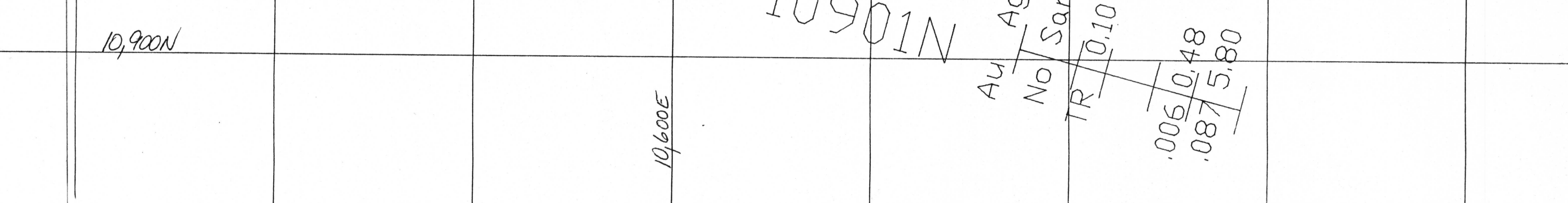
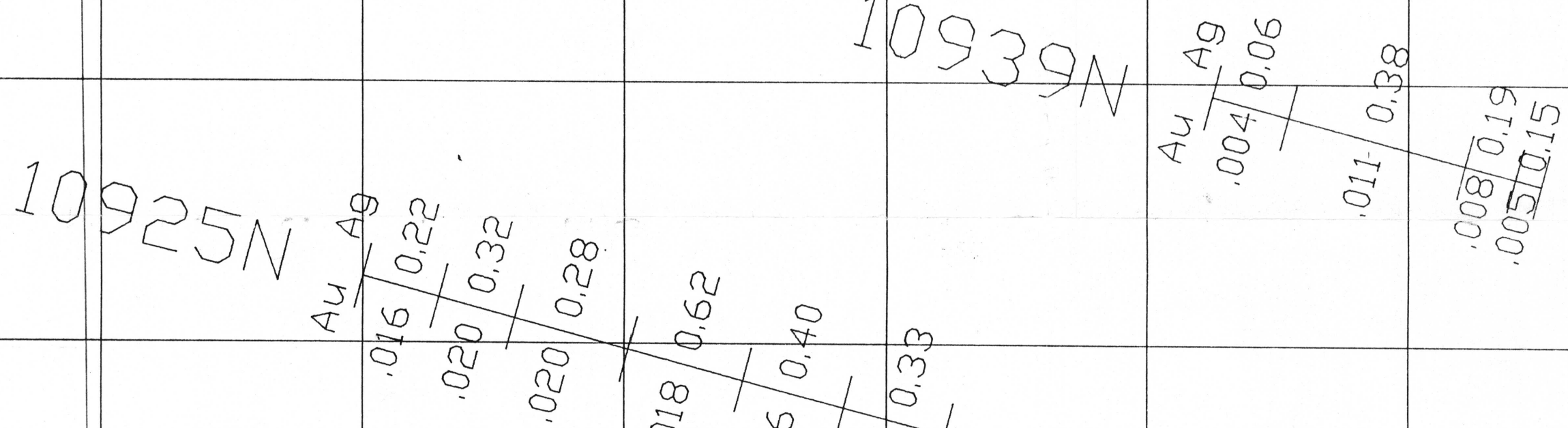
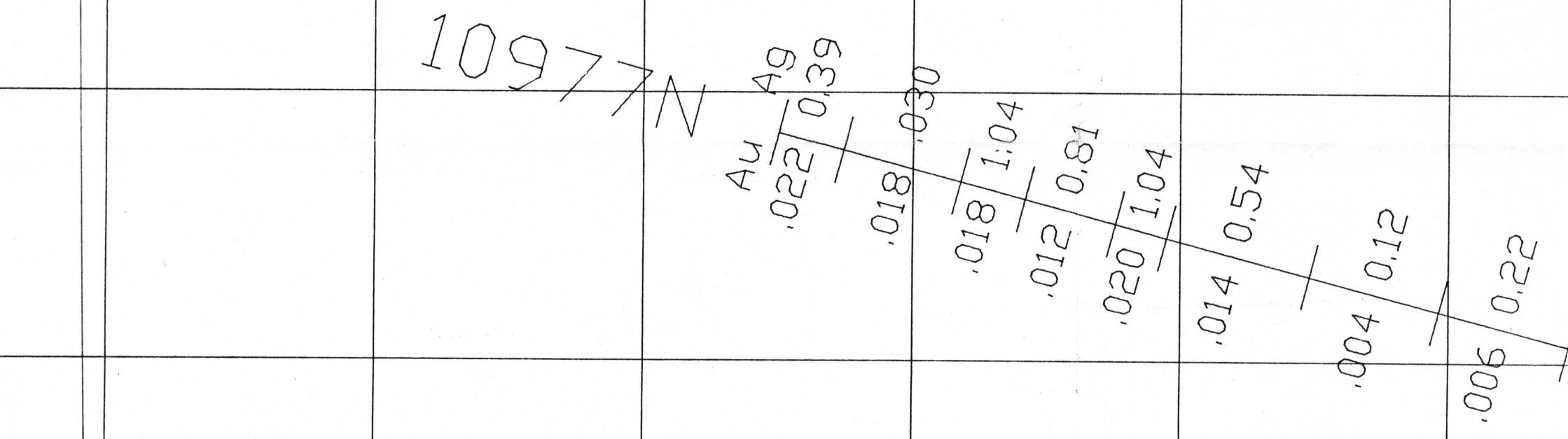
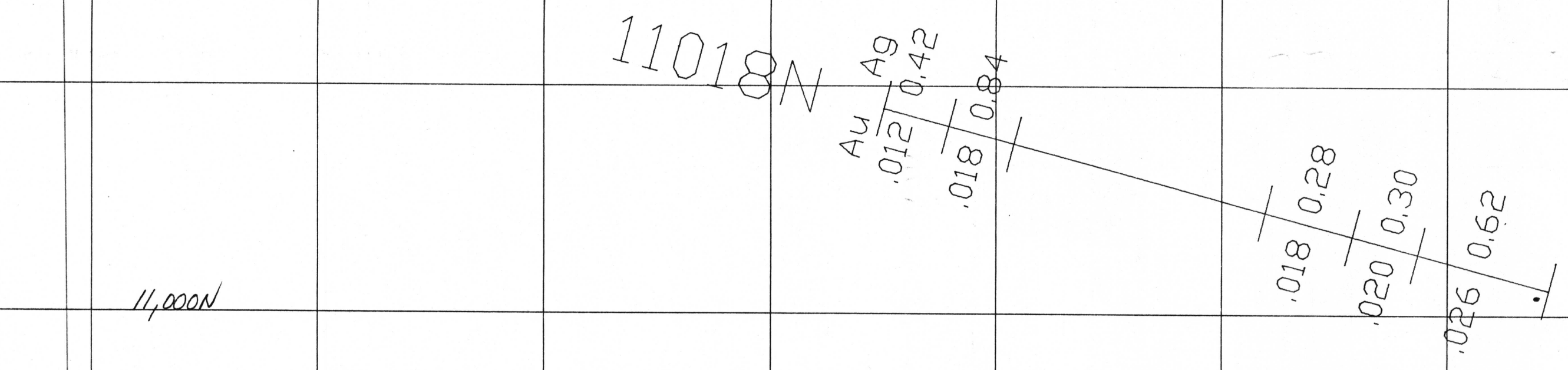
SP-5

4716



MAP #12
SCALE: 1" = 10'
DATE: ?
CBE

LL: 10,530.23/10,677.77
UR: 10,870.23/10,892.77



MAP#13
SCALE: 1"=10'
DATE: 8/3/89
CBE
PA-DWG
LL: 10,530.23/10,883.79
UR: 10,870.23/11,757.52

11,700N

10,600E

SP-7

4602

11,700N

10,800E

11667N

Au Ag
.004 0.07
.002 0.07
.002 0.08
.012 0.28
.016 0.28
.008 0.14
.008 0.12

11638N

Au Ag
.030 0.51
.028 0.38
.018 0.22
.026 0.40
.010 0.20
.004 0.06
.008 0.03
.000 0.06
.000 0.05
.008 0.11
.014 0.29
.014 0.30
.010 0.12
.012 0.18
.008 0.06
.015 0.38
.028 0.86
.020 0.27

11,600N

11,600N

11563N

Au Ag
.006 0.10
.008 0.11
.036 0.36
.014 0.12
.016 0.30

MAP #14
SCALE: 1" = 10'
DATE: 8/3/89
CBE
PA-Dwg

LL: 10,530.23 / 11,542.52
UR: 10,870.23 / 11,757.52

10,600E

10,800E

11,900 N

10,000 E
Au Ag
.002 0.07
.002 0.08
.004 0.11

.003 0.08

.004 0.12
.005 0.10
.008 0.14
.006 0.10

Fill
No Sample

.003 0.09
.001 0.06
.002 0.07
.002 0.08
.000 0.06
.000 0.06
.006 0.16

11,800 N

10670 E

11758 N

10,700 E
Au Ag
22 0.38
3 0.29
2.05
2.60

48

11787 N

10,000 E
Au Ag
.010 .018
.009 0.10
.005 0.06
.006 0.04

11949 N

10,000 E
Au Ag
.010 0.16
.012 0.09
.012 0.10

11,900 N

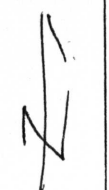
11892 N

Au Ag
.004 0.04
.010 0.16

11854 N

Au Ag
.012 0.10
.014 0.12
.014 0.20
.014 0.10

11,800 N



MAP# 15
SCALE: 1"=10'
DATE: 8/3/89
CBE

PA: Dwg
LL: 10,530.23/11,752.99
UR: 10,870.23/11,967.99

SP-8
+
4600

10,800E

10,900E

12,100N

12,100N

12102N

Au Ag
.008 0.05
.004 0.14
.006 0.16
.012 0.14
.008 0.04
.005 0.14
.005 0.04

12,000N

12,000N

11995N

Au Ag
.015 0.14
.010 0.11
.008 0.12
.020 0.22
.018 0.22
.006 0.16

10,800E

10,900E



MAP#16
SCALE: 1"=10'
DATE: 8/3/89
CBE
PA-Dwg

LL: 10,713.47/11,968.00
UR: 11,053.45/12,183.00

12,300 N

12304N

Au Ag

.006 0.04

.004 0.04

.008 0.06

.016 0.24

.005 0.16

12,300 N

12,200 N

12205N

Au Ag

.007 0.16

.006 0.03

.010 0.38

.018 0.44

.018 0.33

.008 0.06

.010 0.06

11,000 E

12,200 N

11,000 E

12380N

Au Ag

.008 0.10

.004 0.06

.006 0.05

MAP#17
SCALE: 1" = 10'
DATE: 8/3/89
CBE

PA. Dwy
LL: 10,713.47 / 12/83 02
UR: 11,053.47 / 12/398.02

MAP#17

11,000 E

12,800 N

12784 N

Au Ag

.014 0.26

.008 0.24

Au

.010

.008

.007 0.1

.005 0.10

11,100 E

12,800 N

12,700 N

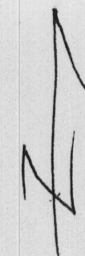
12682 N

Au Ag

.006 0.06

.000 0.10

11,000 E



MAP #18
SCALE: 1"=10'
DATE: 8/3/89
CBE

12,700 N

LH. 10359.65/12,667.92
UR. 11,199.65/12,882.92

11,100 E

11,000

13082N

Au Ag

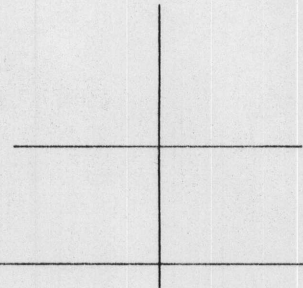
.006 0.10

.004 0.14

.007 0.18

11,100

SP-17



4582

13,000N

13,000N

12986N

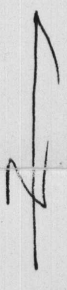
Au Ag

.006 0.16

.005 0.22

.003 0.12

.004 0.08



MAP#19
SCALE: 1"=10'
DATE: 8/3/89
CBE

PA. DWG

LL. 10,910.94 / 12,880.87
UR. 11,250.44 / 13,095.87

12,900N

12,900N

11,000E

12884N

Au Ag

0 0.18

0.28

18

0

11,000E

MAP#19