



CONTACT INFORMATION
Mining Records Curator
Arizona Geological Survey
416 W. Congress St., Suite 100
Tucson, Arizona 85701
602-771-1601
<http://www.azgs.az.gov>
inquiries@azgs.az.gov

The following file is part of the JABA, Inc. Tombstone Mining Records

ACCESS STATEMENT

These digitized collections are accessible for purposes of education and research. We have indicated what we know about copyright and rights of privacy, publicity, or trademark. Due to the nature of archival collections, we are not always able to identify this information. We are eager to hear from any rights owners, so that we may obtain accurate information. Upon request, we will remove material from public view while we address a rights issue.

CONSTRAINTS STATEMENT

The Arizona Geological Survey does not claim to control all rights for all materials in its collection. These rights include, but are not limited to: copyright, privacy rights, and cultural protection rights. The User hereby assumes all responsibility for obtaining any rights to use the material in excess of "fair use."

The Survey makes no intellectual property claims to the products created by individual authors in the manuscript collections, except when the author deeded those rights to the Survey or when those authors were employed by the State of Arizona and created intellectual products as a function of their official duties. The Survey does maintain property rights to the physical and digital representations of the works.

QUALITY STATEMENT

The Arizona Geological Survey is not responsible for the accuracy of the records, information, or opinions that may be contained in the files. The Survey collects, catalogs, and archives data on mineral properties regardless of its views of the veracity or accuracy of those data.

Volume 7 ; Book 16

0096

TOMBSTONE

Mining District

Cochise County

ARIZONA

Misc. Land Status Maps
Pre-1970 to 1981

LAND & CLAIM
MAP ARE 1976

1960's Maps

LAND MAPS
1973-ERA

MISC CRAND
MAPS



Southwestern Exploration Associates

COUNTY NOTEBOOK RESEARCH SYSTEM

4500 E. Speedway, Suite 14
Tucson, Arizona 85712
(602) 795-6097

CONSULTING SERVICES IN:

literature research
mineral exploration
geothermal exploration
geophysical exploration
multispectral aerial photography
space imagery search and retrieval
image enhancement and processing
remote sensing and interpretation
environmental studies

VOL. 1

METAL PRICE LIST

COUNTY NOTEBOOK INVENTORY LIST

Volume 1: County Summary Material

1. Mining District index map with USGS quadrangle overlay
2. County bibliography list with explanations
3. Target listing
4. Listing of all deposits with current exploration status
5. Map indexes to various commodities and a generalized land status map
6. County report by State Bureau of Mines
7. Information on industrial mineral occurrences within the county
8. General articles filed alphabetically, preceded by bibliography list
9. Metal price list

Volume 2: Thesis Material

1. Index map of available theses
2. Theses arranged alphabetically by author

Volume 3: U.S.G.S. Reduced Topographic Sheets

1. Reduced A.M.S. sheets
2. Reduced 7½ and 15 minute quad sheets with list of mines located on each quad sheet

Volume 4: U.S.G.S. Geologic, Geophysical, Geochemical and Open File Maps

1. Index to maps in Volume 4
2. Geologic maps
3. Geophysical maps
4. Geochemical maps
5. Photo index maps

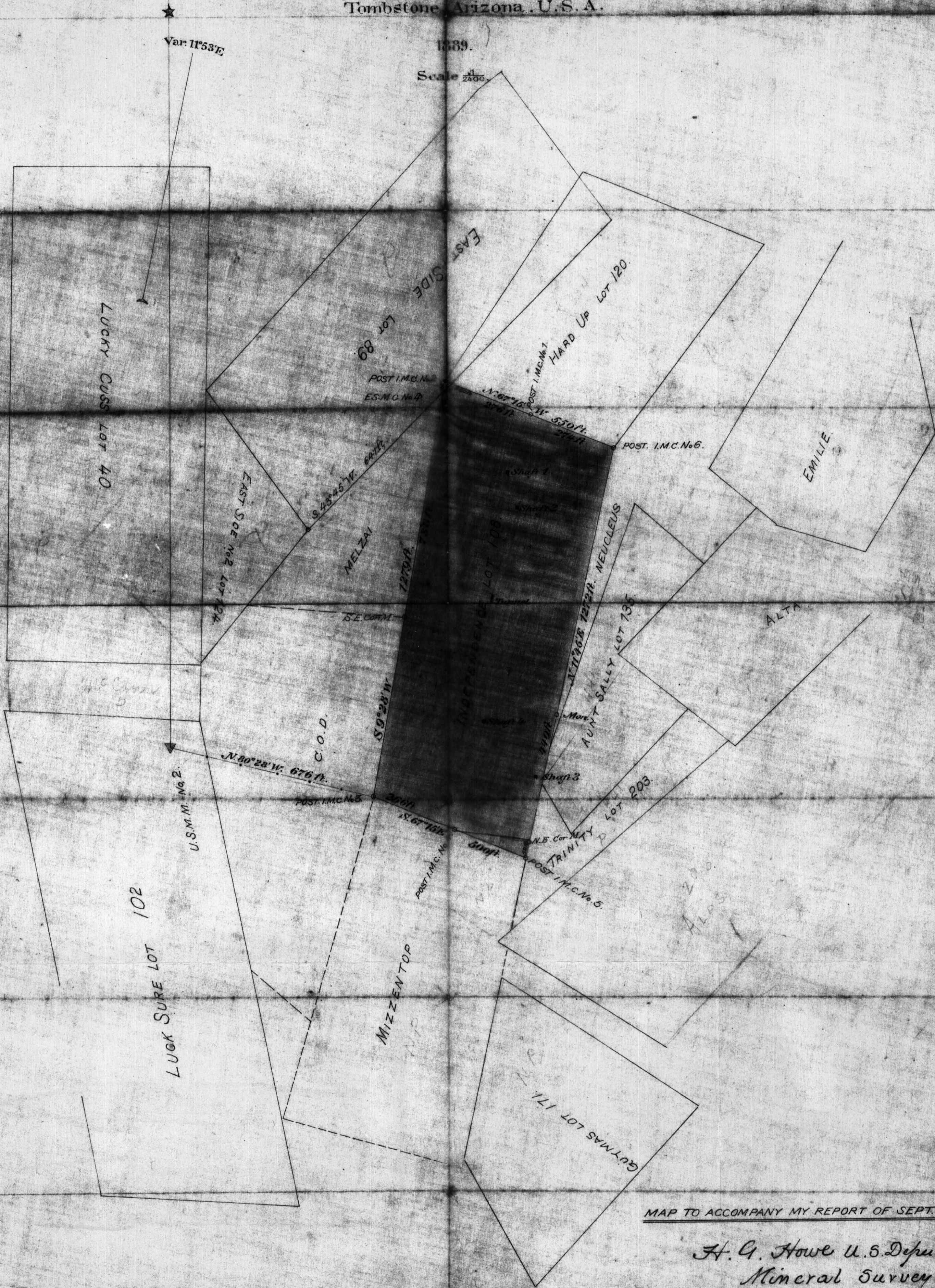
Volume 5: Mining District Notebooks

1. Mining district summary sheet
2. Mint records, mineral resources material, Weed's Copper Handbook (colored sheets separate these sections)
3. Mining district articles listed alphabetically
4. Bibliography
5. Mine summary sheets with geologic data
6. Land status

LOT N° 108
INDEPENDENCE MINE

belonging to
B. Rinehart, A. Baron & J.H. Striedinger.

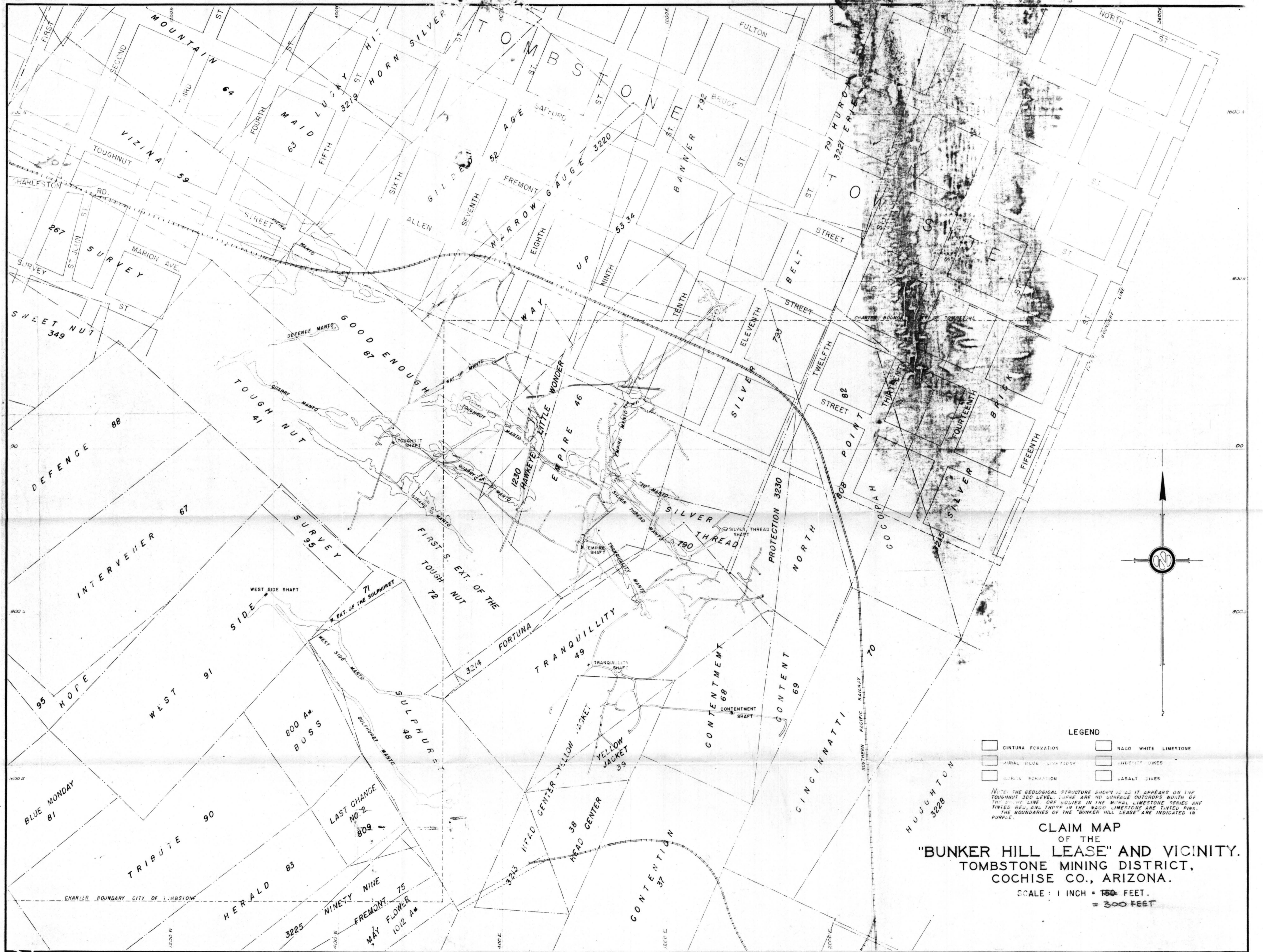
Tombstone, Arizona, U.S.A.



MAP TO ACCOMPANY MY REPORT OF SEPT. 27. 1889.

H. G. Howe U.S. Deputy
Mineral Surveyor,
Tombstone, Arizona.

Sec 4 - Dep 205 By 22
Tombstone, Arizona
No 108



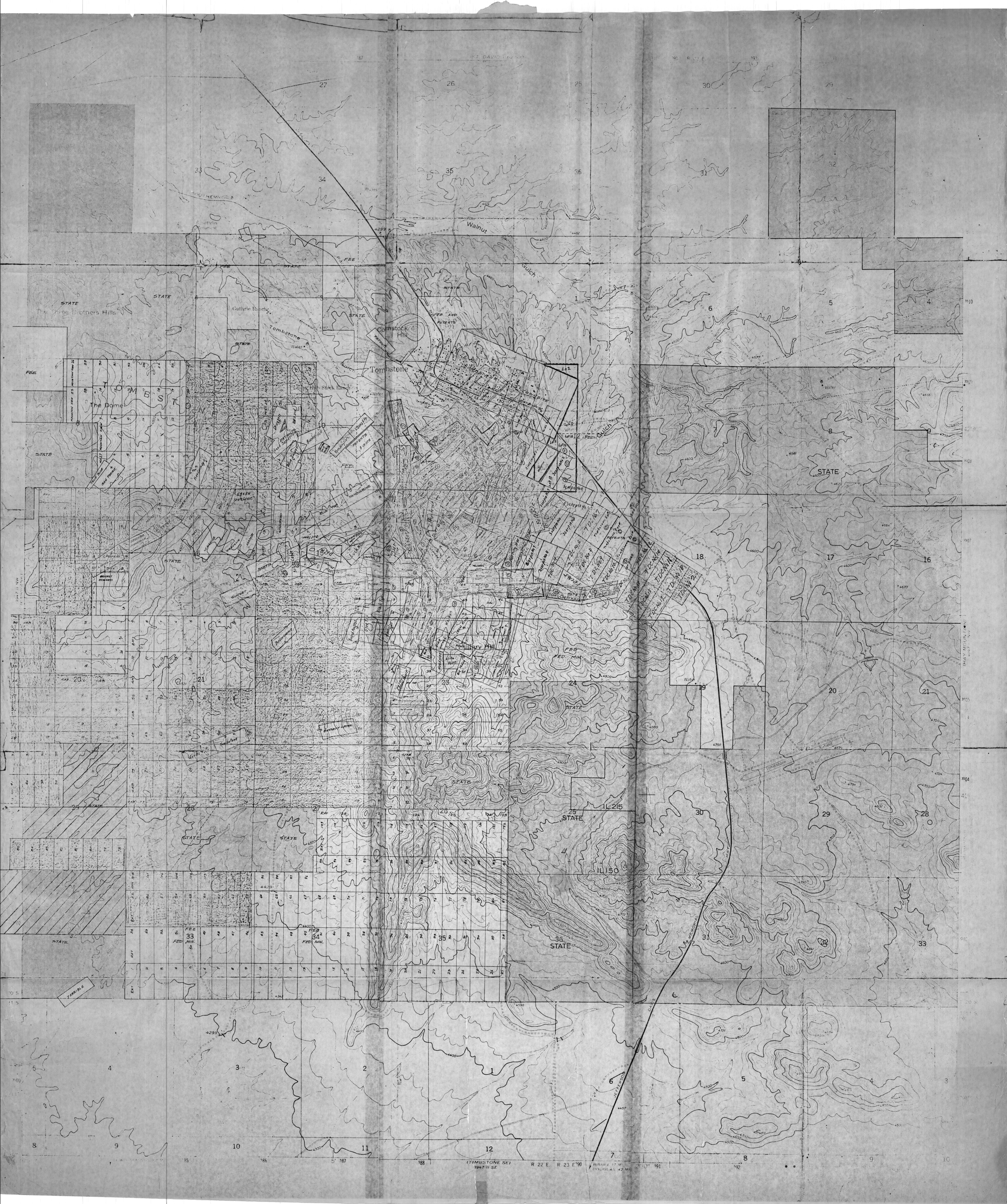
LEGEND

	CINTURA FORMATION		NACO WHITE LIMESTONE
	AURAL BLUE LIMESTONE		LIGNITE DIKES
	MARBLE FORMATION		BASALT DIKES

NOTE: THE GEOLOGICAL STRUCTURE SHOWN IS AS IT APPEARS ON THE TROUGH NUT 300 LEVEL. THERE ARE NO SURFACE OUTCROPS NORTH OF THE POINT LINE. ORE BODIES IN THE MARBLE LIMESTONE SERIES ARE TINTED RED, AND THOSE IN THE NACO LIMESTONE ARE TINTED PINK. THE BOUNDARIES OF THE "BUNKER HILL LEASE" ARE INDICATED IN PURPLE.

**CLAIM MAP
OF THE
"BUNKER HILL LEASE" AND VICINITY.
TOMBSTONE MINING DISTRICT,
COCHISE CO., ARIZONA.**

SCALE: 1 INCH = 150 FEET.
= 300 FEET



(TOMBSTONE SE)
1925 11 SE

R 22 E R 23 E 90

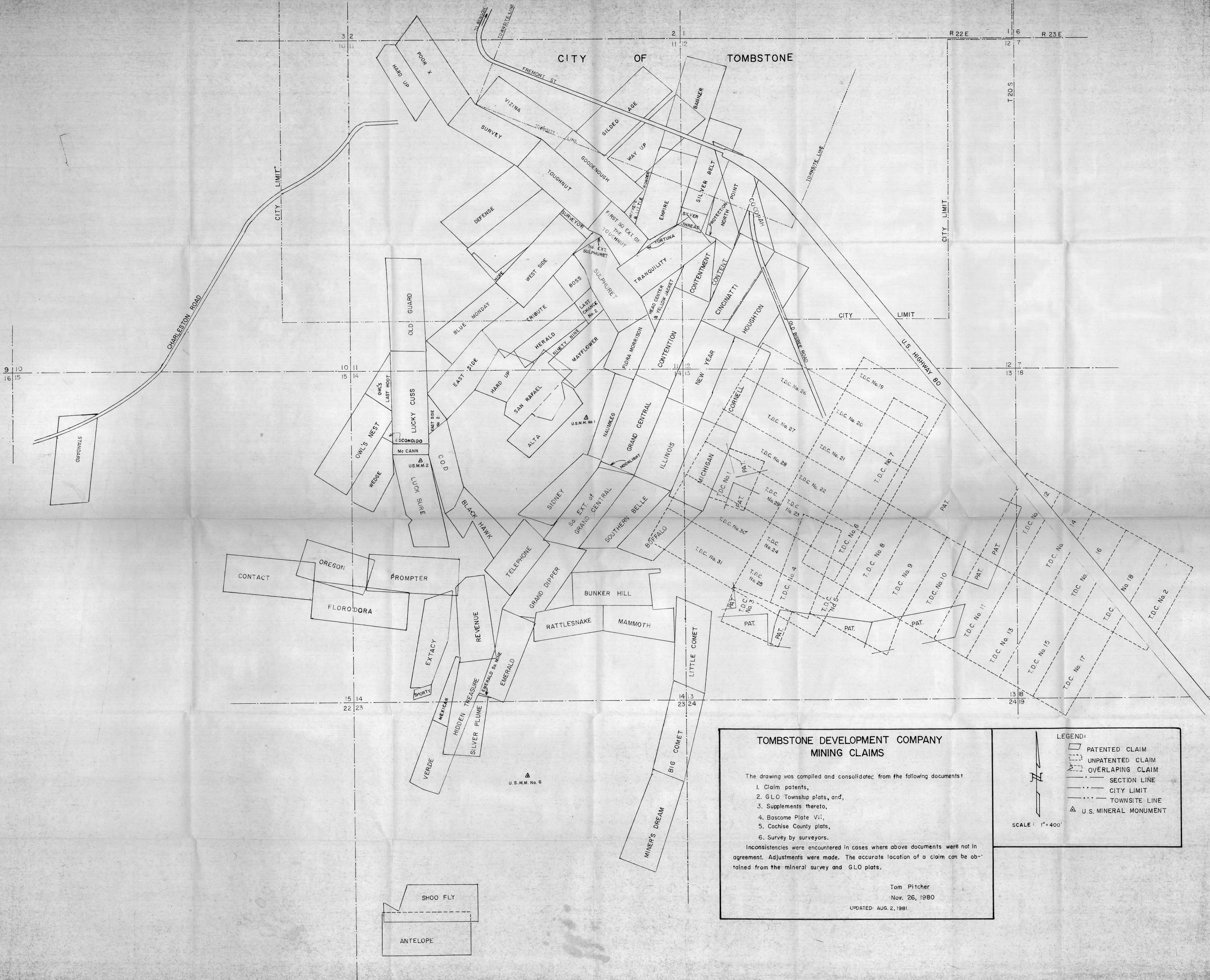
1:50,000
DOUGLAS 42 M

25 01 591

42

10

Arizona Co. Inc.
Tombstone, U.S.A.
1881-1882
Tombstone, Arizona
1881-1882



**TOMBSTONE DEVELOPMENT COMPANY
MINING CLAIMS**

The drawing was compiled and consolidated from the following documents:

1. Claim patents,
2. G.L.O. Township plats, and,
3. Supplements thereto,
4. Bascome Plate VII,
5. Cochise County plats,
6. Survey by surveyors.

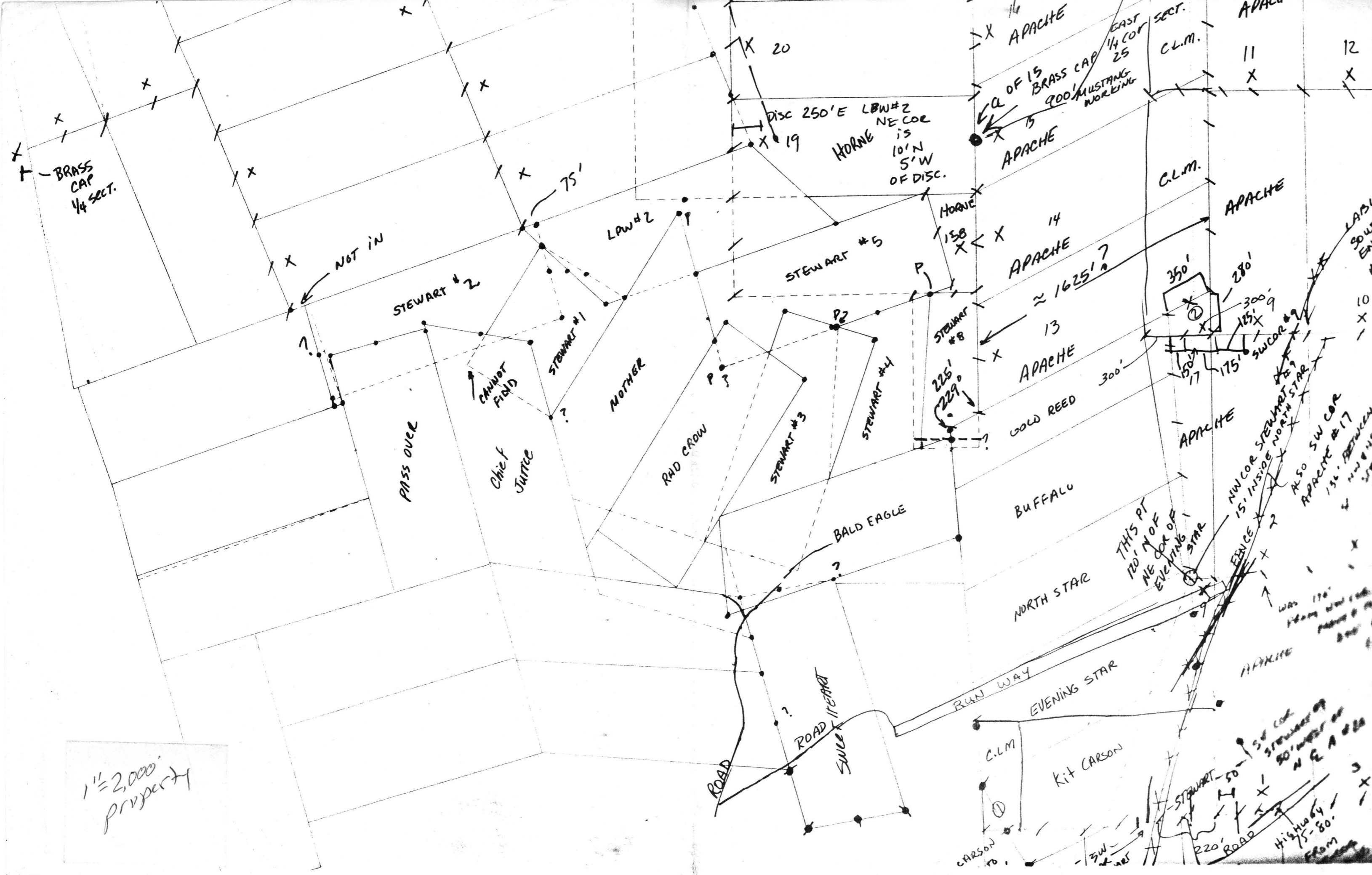
Inconsistencies were encountered in cases where above documents were not in agreement. Adjustments were made. The accurate location of a claim can be obtained from the mineral survey and G.L.O. plats.

Tom Pitcher
Nov. 26, 1980
UPDATED: AUG. 2, 1981

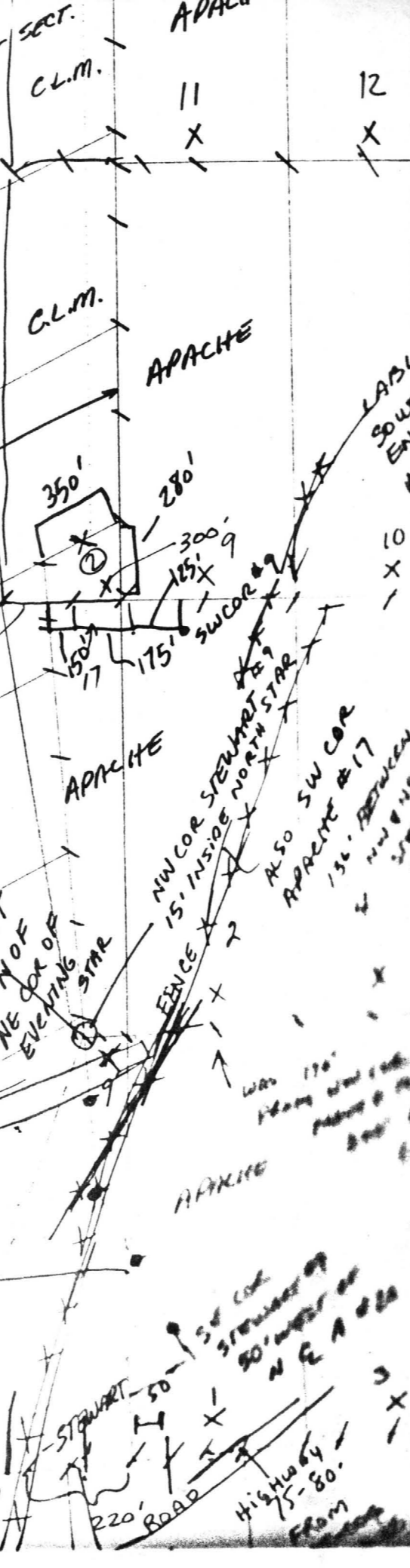
LEGEND:

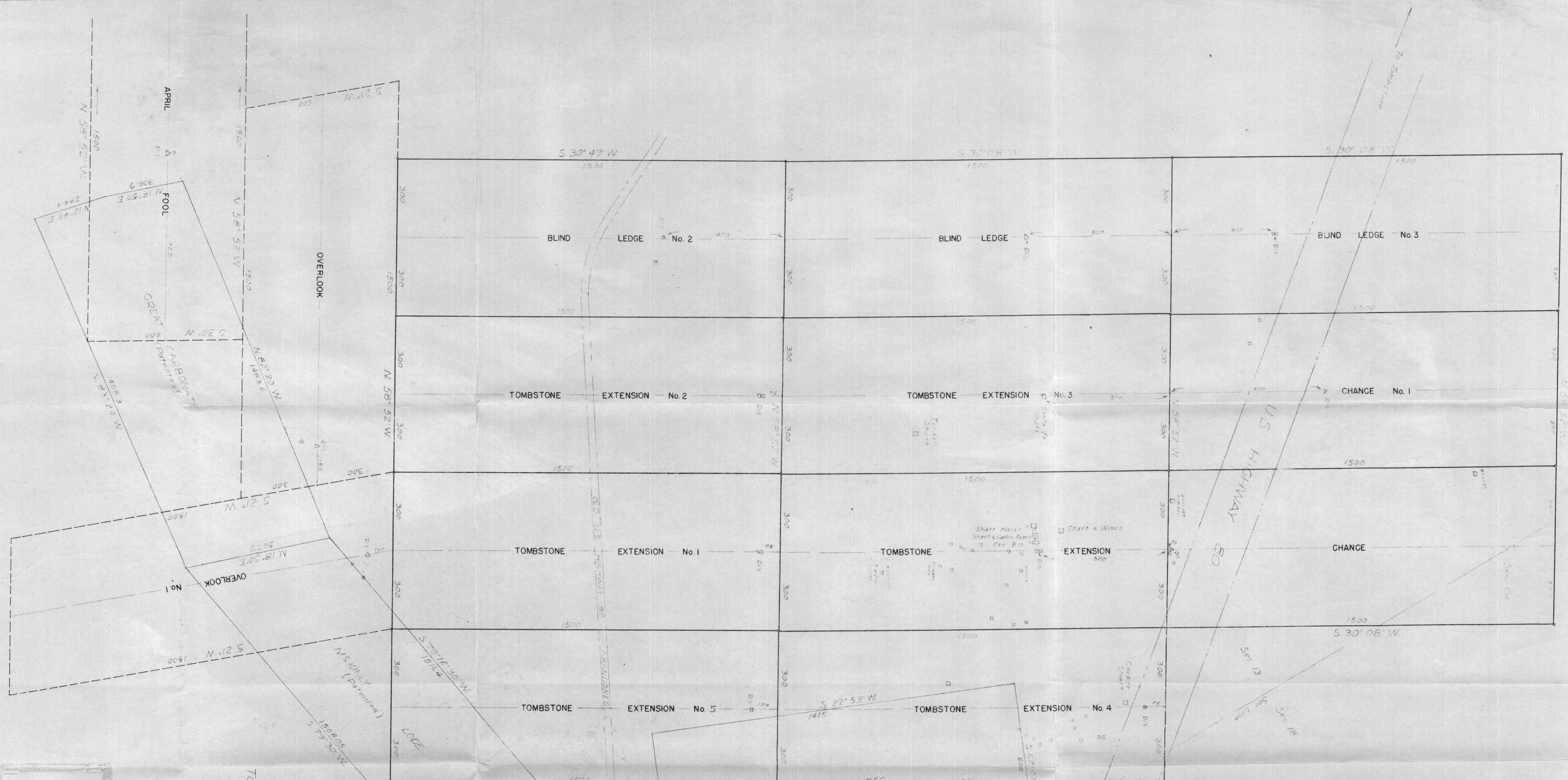
- PATENTED CLAIM
- UNPATENTED CLAIM
- OVERLAPPING CLAIM
- SECTION LINE
- CITY LIMIT
- TOWNSITE LINE
- U.S. MINERAL MONUMENT

SCALE: 1" = 400'



1" = 2,000' property





MAP SHOWING
TOMBSTONE EXTENSION GROUP
TOMBSTONE MINING DIST.
For
C.M. Autremont
May 1923
Scale 1" = 200'

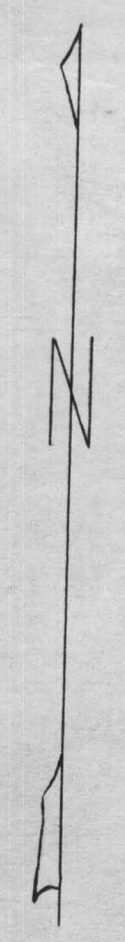
C.M. Autremont
Dwg. Engr.

DRAWING NUMBER			
D. N.	R. P.	F.	LOC.
2522	0418	AF	S16A1

MAP SHOWING TOMBSTONE EXTENSION GROUP 2-1-11
Tombstone Mining District
For C. W. d'Autremont
Dated: May 1953 T. N. Stevens
Scale: 1" = 200'

CLAIM MAP

MAR & MORT GROUPS
TOMBSTONE, ARIZ.



R.22.E
R.23.E

LEGEND

- Discovery Monument
- ⊙ Suggested Amended Discovery
- End Lines not surveyed (Previous monuments from Fowler Survey used)
- - - Patent Townsite Line (From Map)
- Section Line " "

Scale: 1" = 300'

Survey Control taken from South End Line of the Cincinnati patented lode claim
 Mar Claims Nos 1-14 dated May 26 1953
 Mar Claims Nos 15-20 dated May 29 1953
 Mort State Claims dated May 29 1953

Survey by: R.J. Searls

CLAIM MAP
MAR & MORT
Tombstone, Ariz.

2-1-10

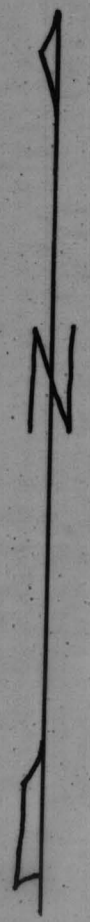
CLAIM MAP - MAR & MORT CLAIMS
Tombstone, Ariz.

Survey: R. J. Searls
Scale: 1" = 300'

Mar Claims Nos. 1 - 14 dated May 26, 1953
Mar Claims Nos. 15 - 20 dated May 29, 1953
Mort State Claims dated May 29, 1953
Survey Control taken from South End Line
of the Cincinnatti patented lode claim

CLAIM MAP

MAR & MORT GROUPS
TOMBSTONE, ARIZ.



R-22-E
R-23-E

116
127

T-20-S



LEGEND

- Discovery Monument
- ◉ Suggested Amended Discovery
- End Lines not surveyed (Previous monuments from Fowler Survey used)
- Patent Townsite Line (From Map)
- Section Line
- Tombstone Corporate Limits (From map by J.A. Rockfellow)

Scale: 1" = 300'

Survey Control taken from South End Line of the Cincinnati patented lode claim
Mar Claims Nos 1-14 dated May 26 1953
Mar Claims Nos 15-20 dated May 29 1953
Mort State Claims dated May 29 1953

Survey by: R.J. Searls

70 - CINCINNATI

AC 2