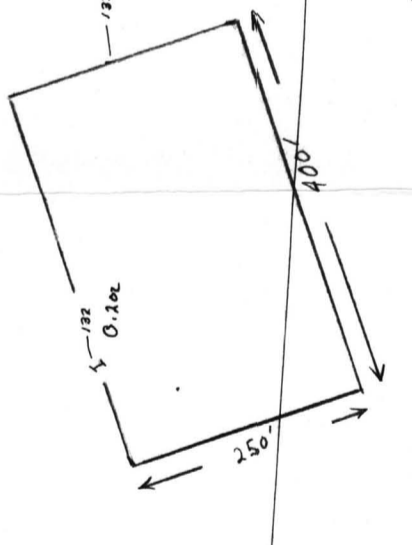




The above average net including as silver and about 500 as gold price and \$100 being a \$25 gold stock would have a value of \$425 intervals the width of 10 feet out or over 64 feet.



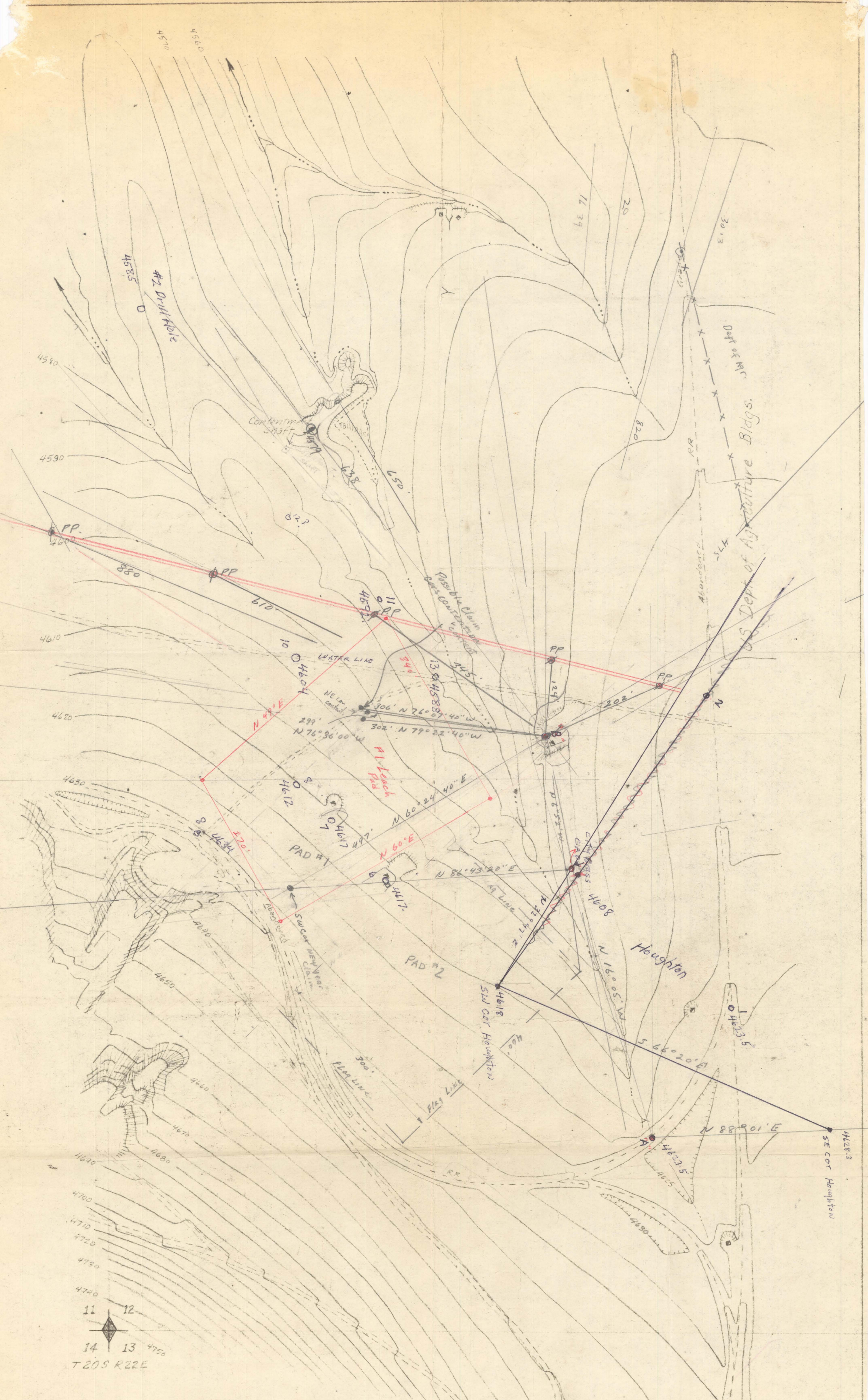
The above average net including as silver and about 500 as gold price and \$100 being a \$25 gold stock would have a value of \$425 intervals the width of 10 feet out or over 64 feet.

Stone 1" x 20"

REVISIONS	
DATE	BY
1993	
APPROVED	

DATE	BY	DATE	BY
1993			
APPROVED			

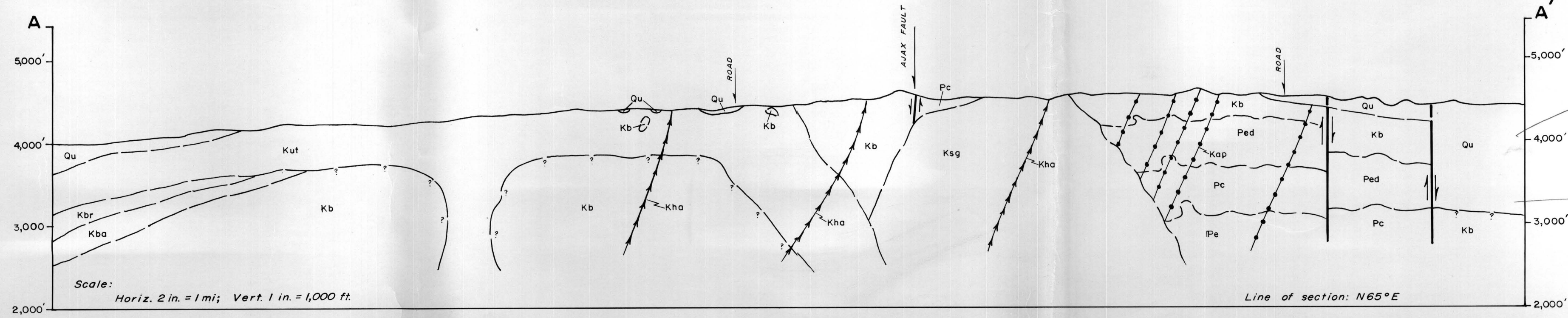
COUNTRY: USA
STATE: New York
COUNTY: Sullivan
TOWNSHIP: Catskill
MUNICIPALITY: Catskill
MUNICIPALITY: Catskill



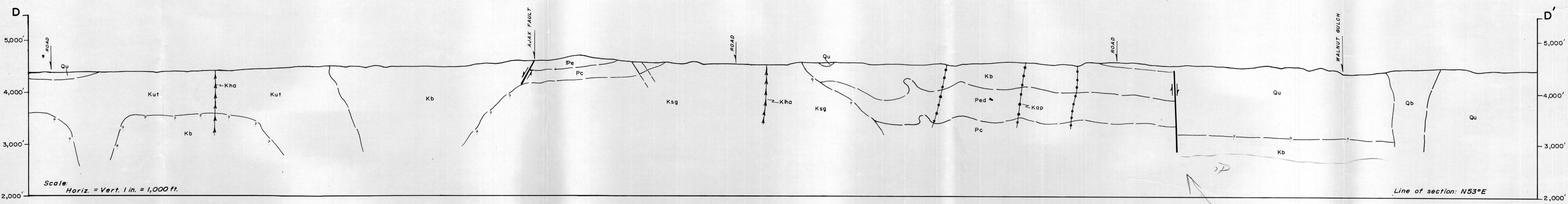
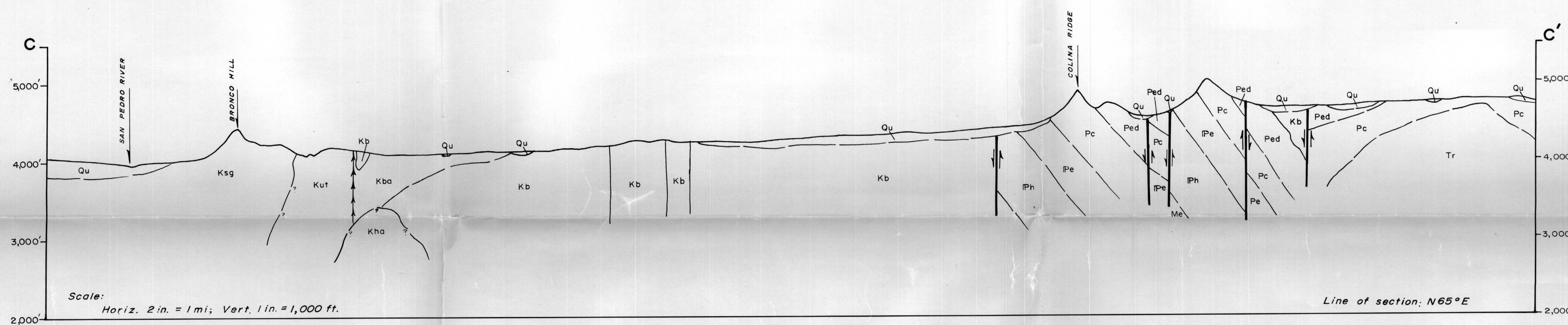
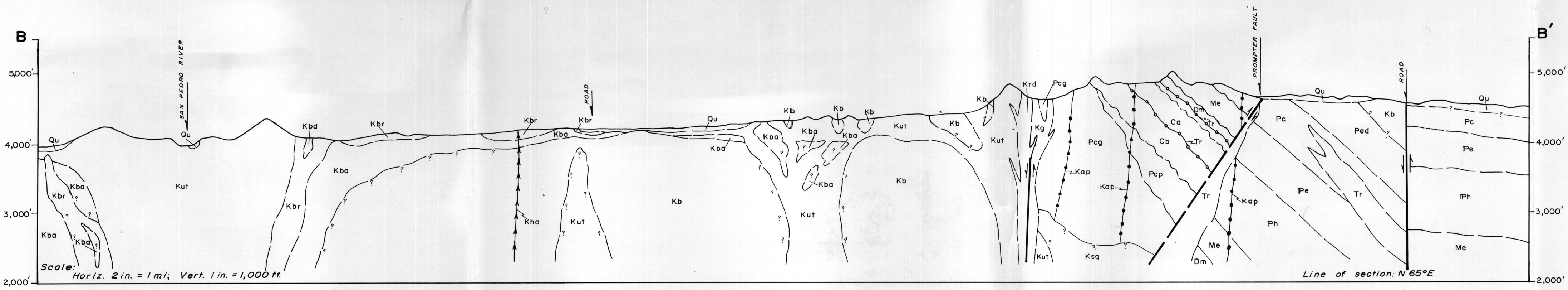
Topographic Map
 Heap Leach Test Area
 Tombstone Ariz.
 Scale 1 inch = 100 feet
 contour interval 5 ft.

data from USGS-1908
 & air photos-1973
 J.R. Beeder Dec 5, 1974

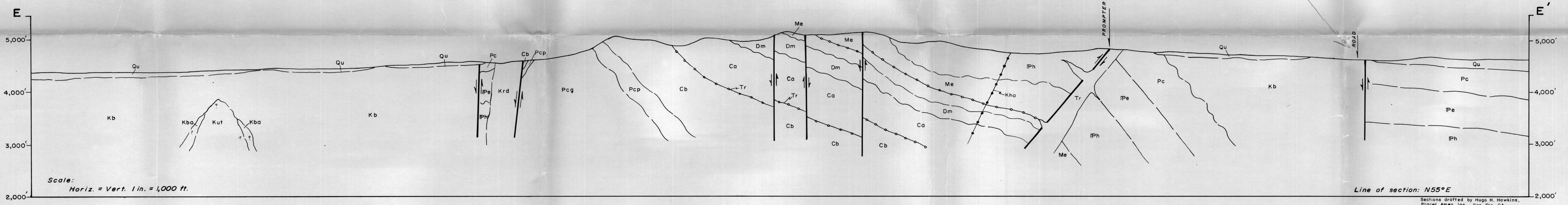
**HEAP LEACH TEST AREA
 TOMBSTONE, AZ
 1"=100'**

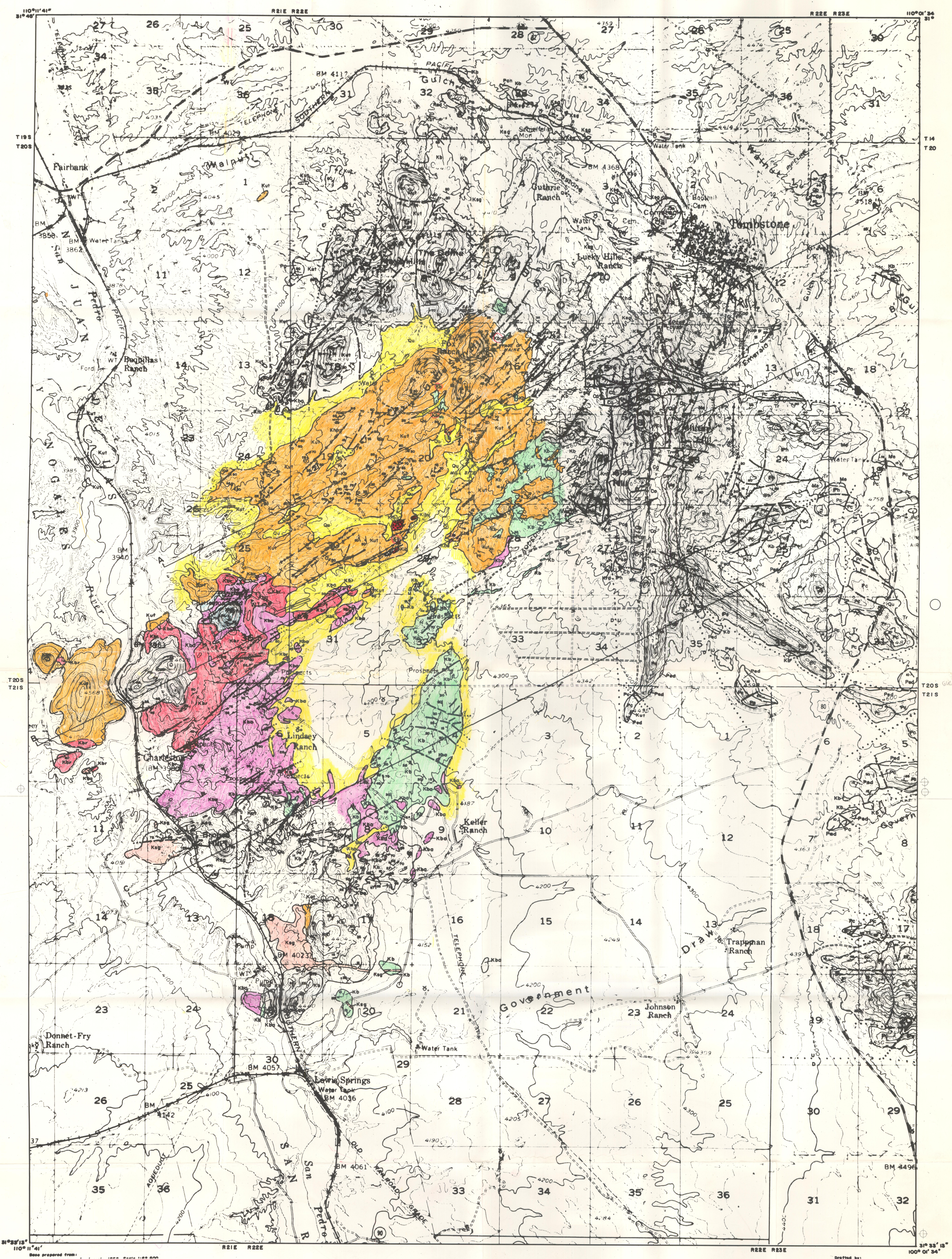


*W of A gravity
stasis
Rogers & Linn 2/25/51
this line*

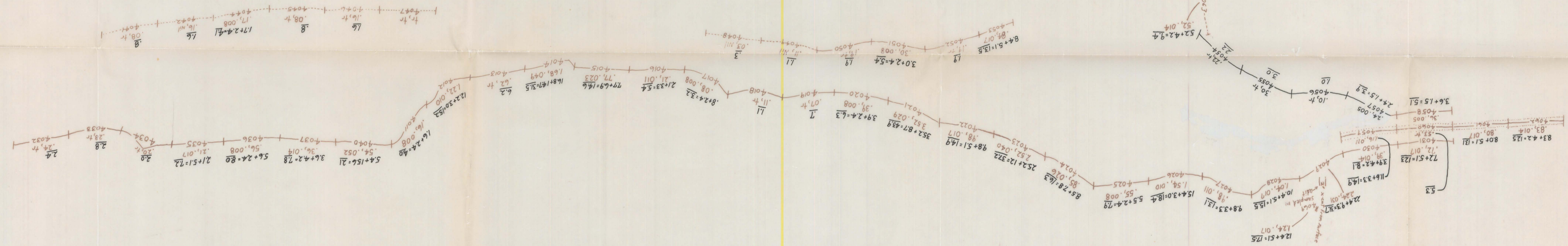
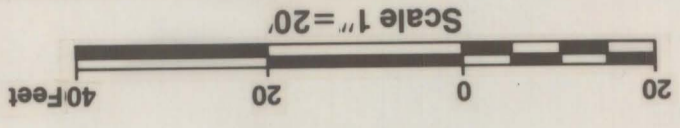


*Same fault
2 diff. directions
of movement*

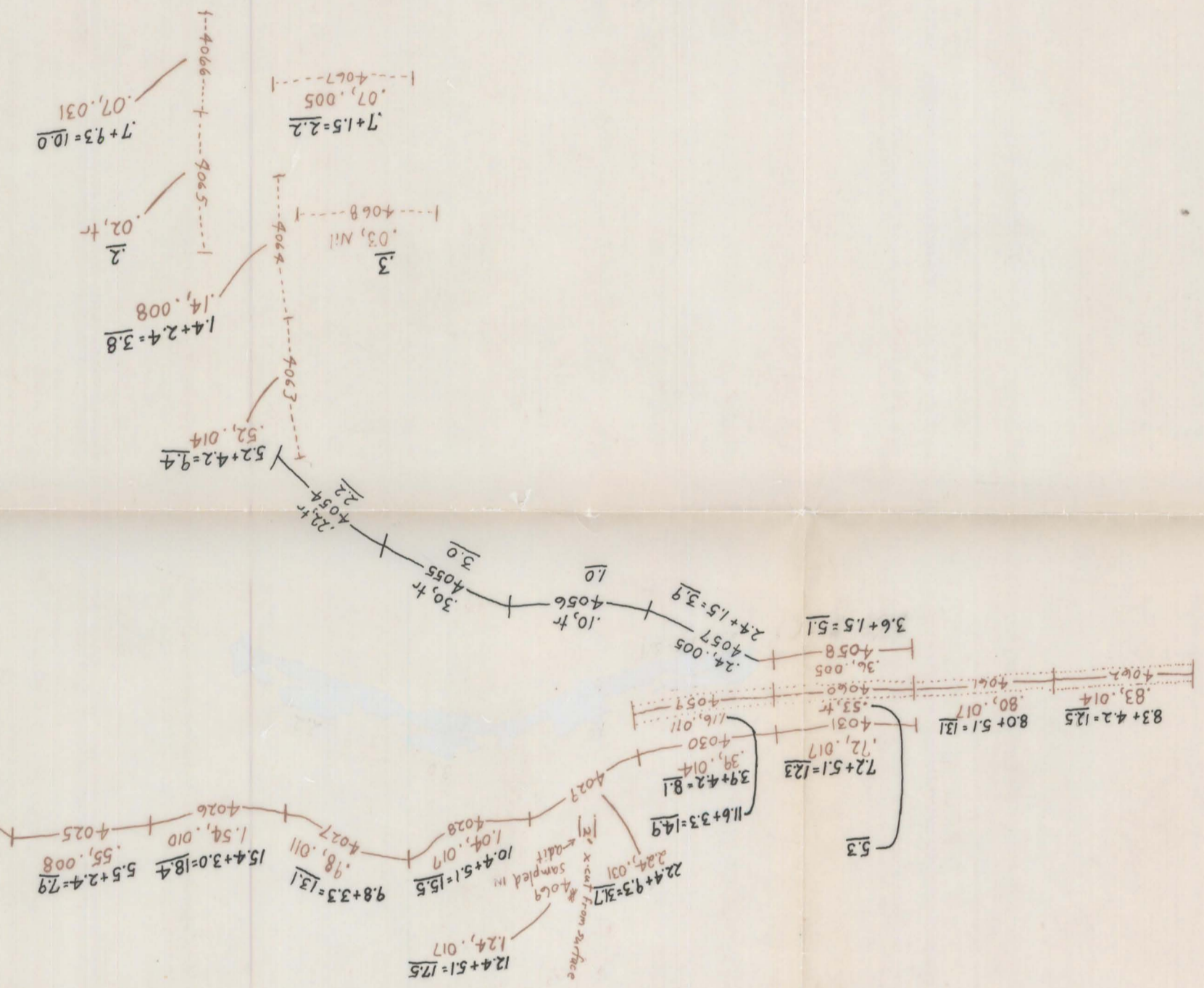


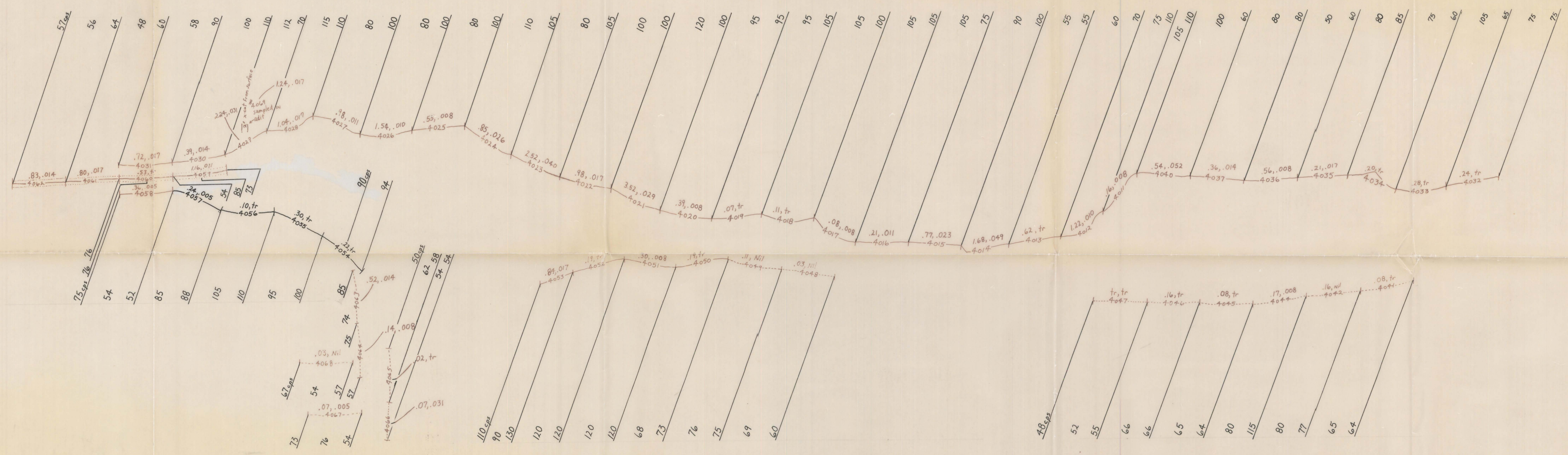


DATE: 8/78		REVISIONS	
DRAWN BY: B.M.P.	DATE NUMB. BY	DATE NUMB. BY	DATE NUMB. BY
COUNTRY: USA			
GEOLOGY BY:			
Tombstone, Arizona			
CENTENTON FAULT-Open Cut Trench			
APPROVED:		DRAWING NUMBER	
COUNTY: Cochise	STATE: Arizona	MOUNTAIN RANGE: Tombstone	
MINING DISTRICT: Tombstone		SOUTHERN ASSOCIATION, INC.	

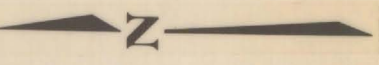
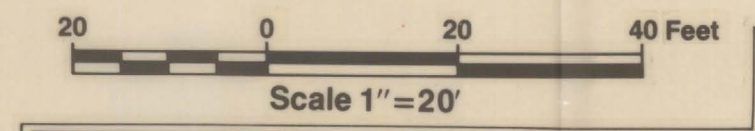


Dollar Values Calculated Assuming: \$10/tray oz. Ag.
 500/tray oz. Au.
 Ag, Au Assay Values
 1.7 + 2.4 = 4.1
 Total \$ Value
 4044
 Sample Number





NOTE:
 - ALL READINGS REPRESENT COUNTS PER SECOND (cps)
 - ALL READINGS WERE TAKEN
 1- ALONG OUTCROP FACE,
 2- IN AVERAGE OF 15 FEET BELOW THE SURFACE, AND,
 3- IN AVERAGE OF 4 FEET ABOVE THE PRESENT BASE LEVEL
 OF THE TRENCH.
 - SCINT. READINGS TAKEN ON 10 FOOT INTERVAL



DATE: 9-79				REVISIONS				COUNTRY: USA		GEOLOGY BY:
DRAWN BY:		DATE	NUMB.	BY		DATE	NUMB.	STATE: ARIZONA		
APPROVED:		DRAWING NUMBER						COUNTY: COCHISE		
D.N.	R.	P.	F.	LOC.		MOUNTAIN RANGE: TOMBIERNE HILLS		MINING DISTRICT: TOMBIERNE		Southwestern Exploration Associates, Inc. Tombstone, Arizona
		418								