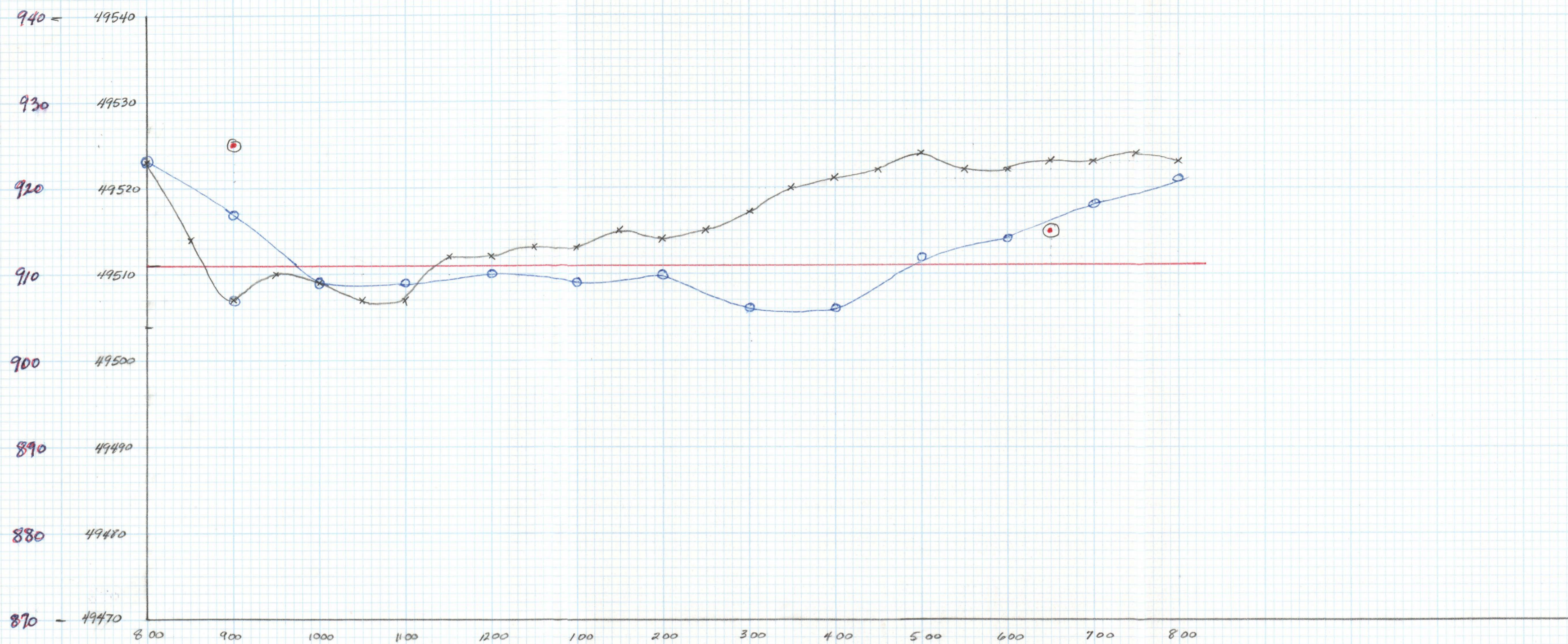
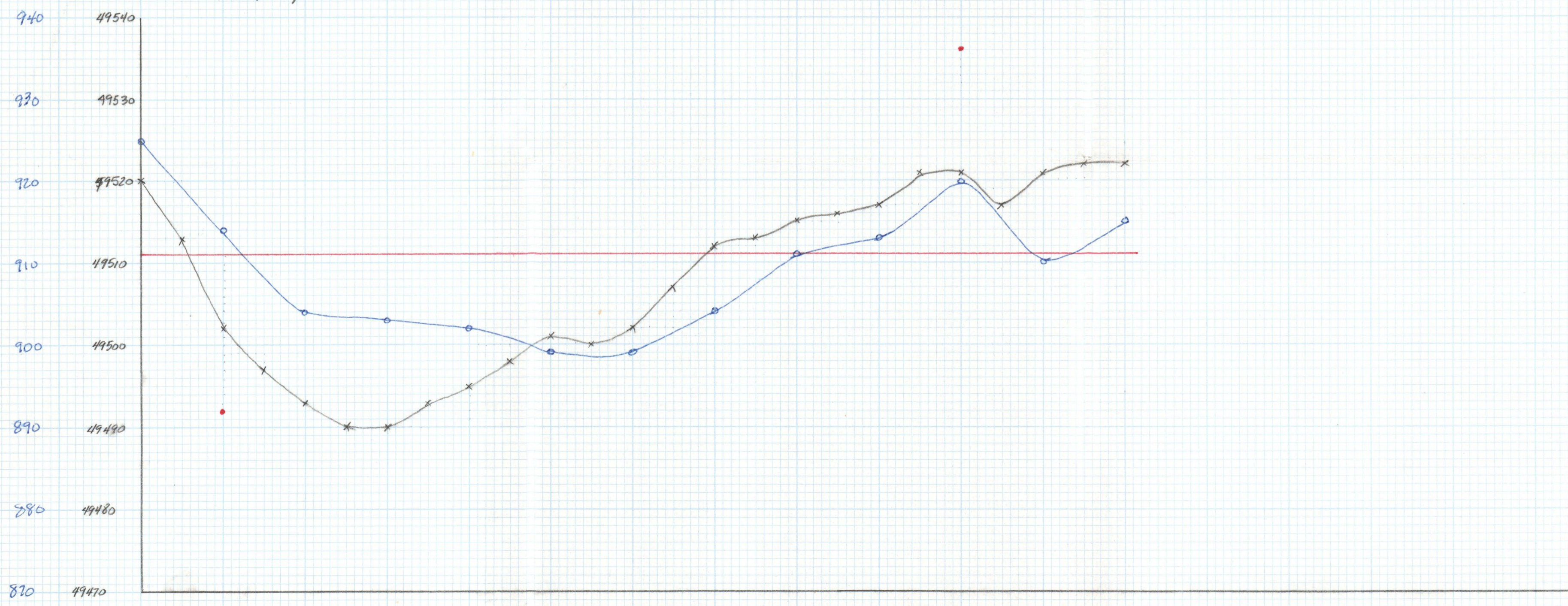


MAY 2, 1983

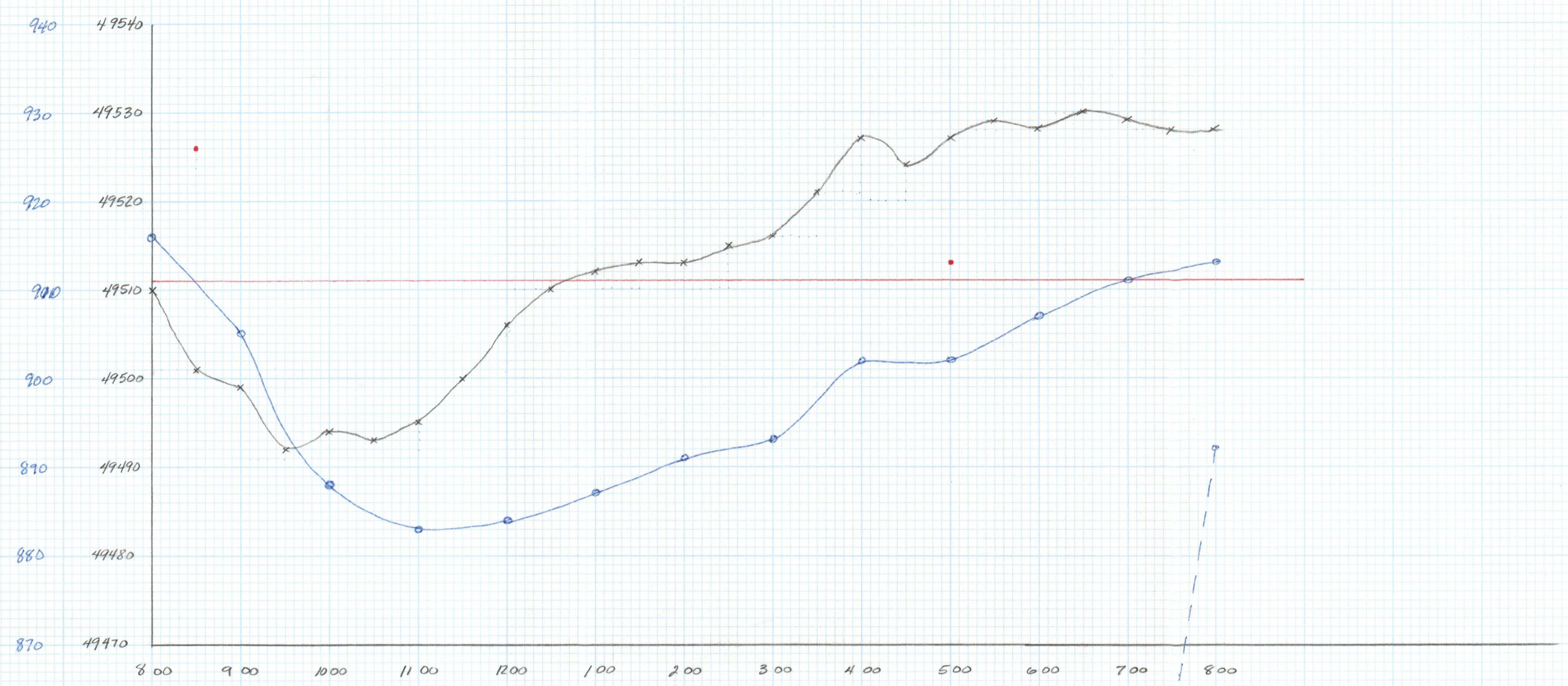


MAY 3, 1983

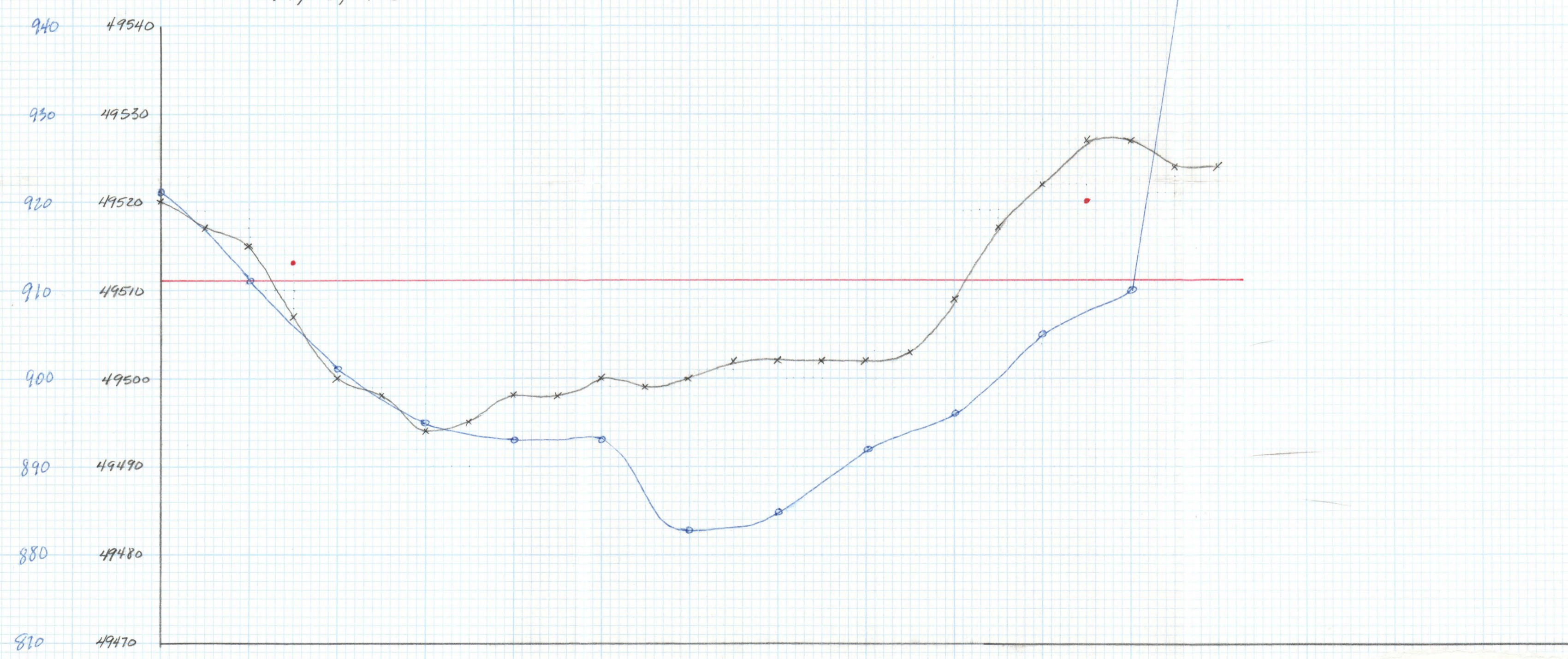




MAY 4, 1983



MAY 5, 1983

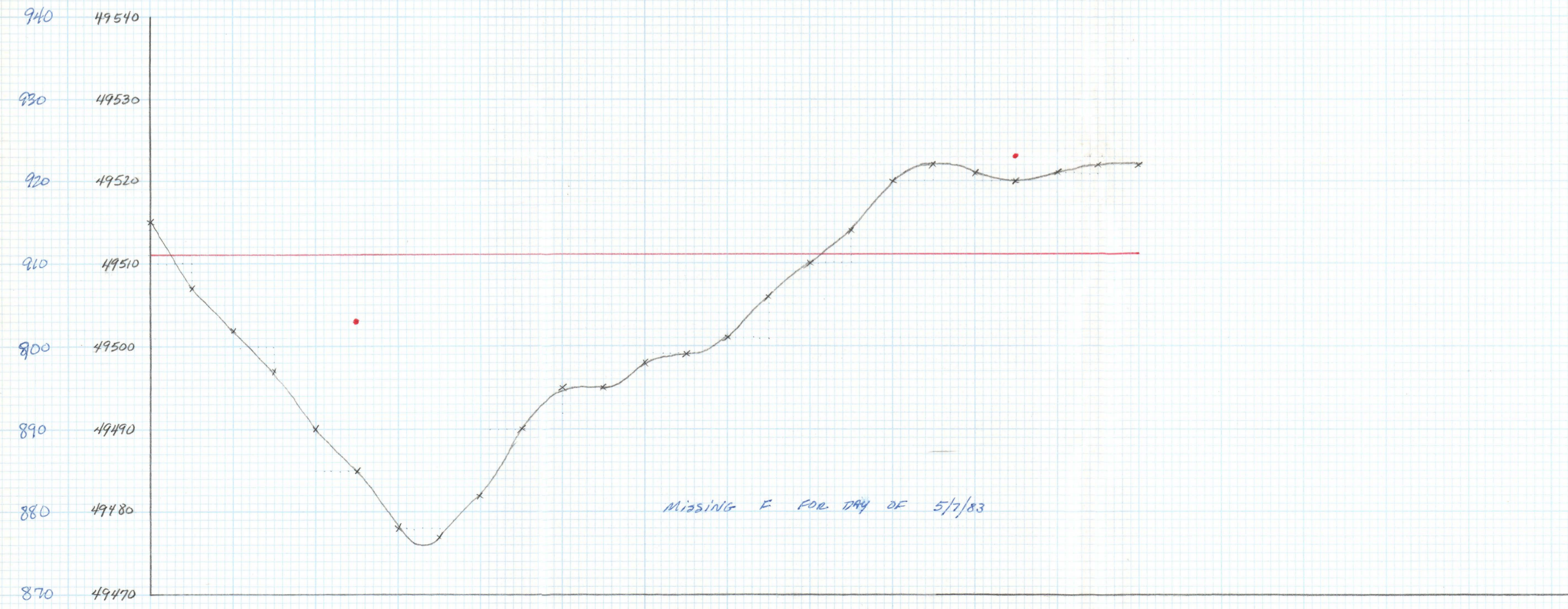




MAY 6, 1983

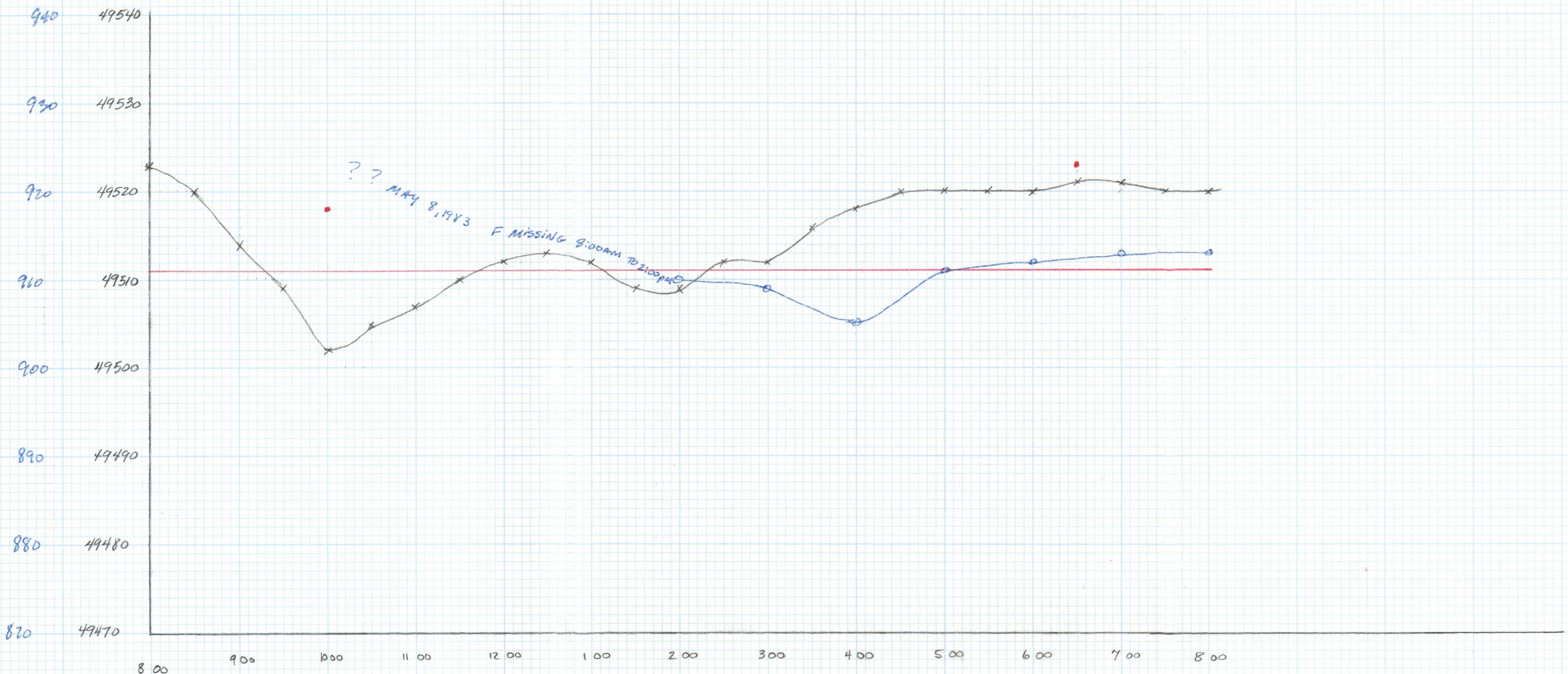


MAY 7, 1983

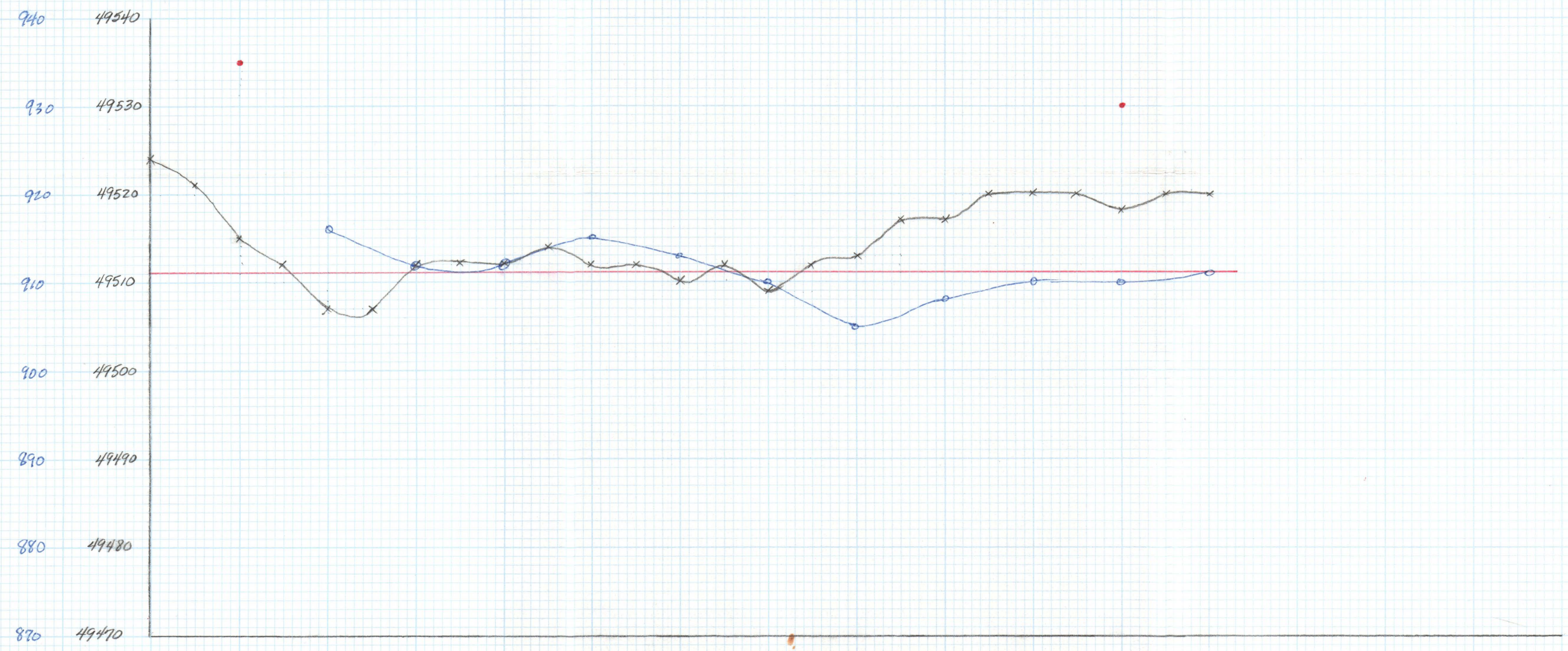




MAY 8, 1983

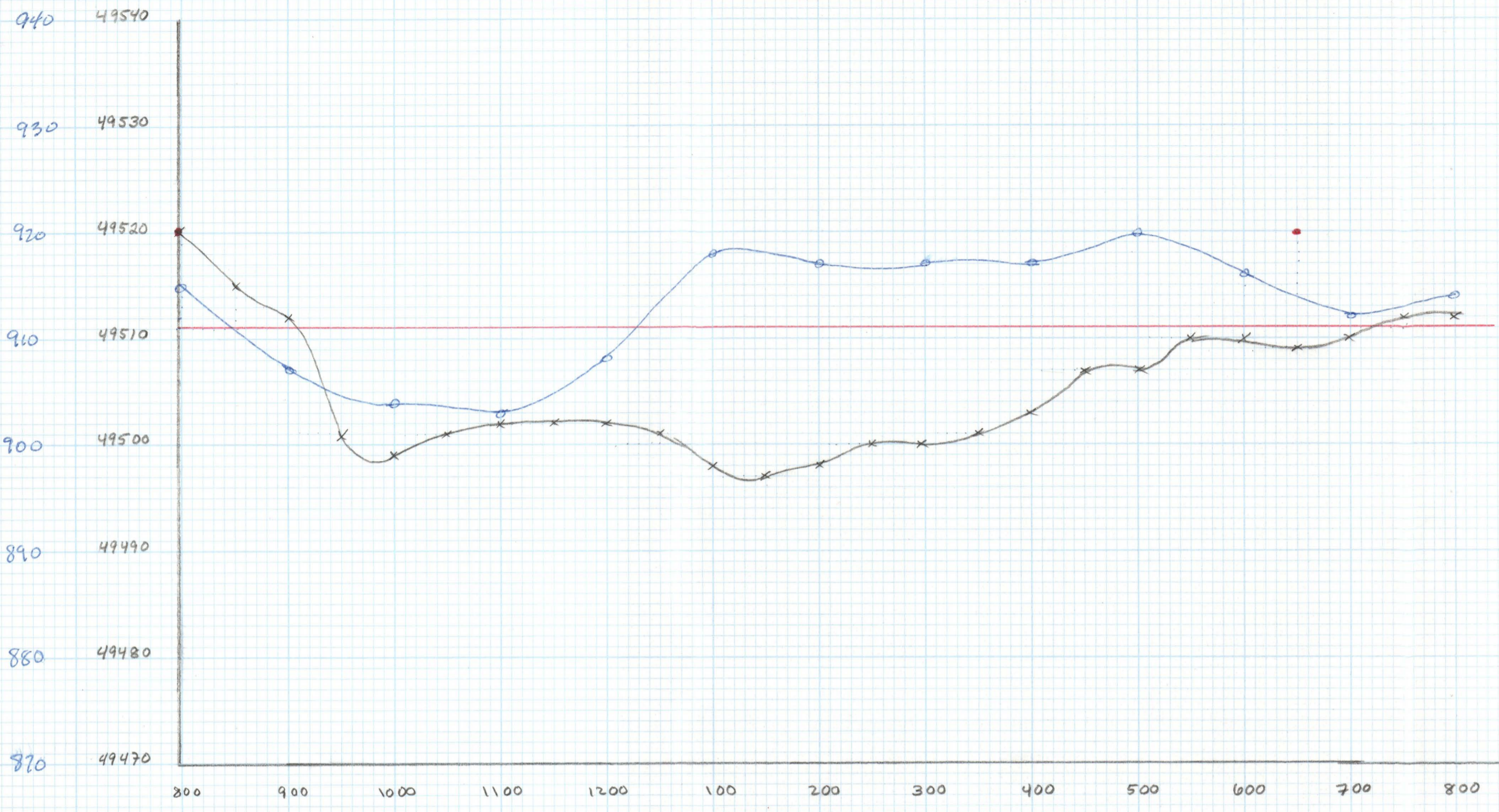


MAY 9, 1983

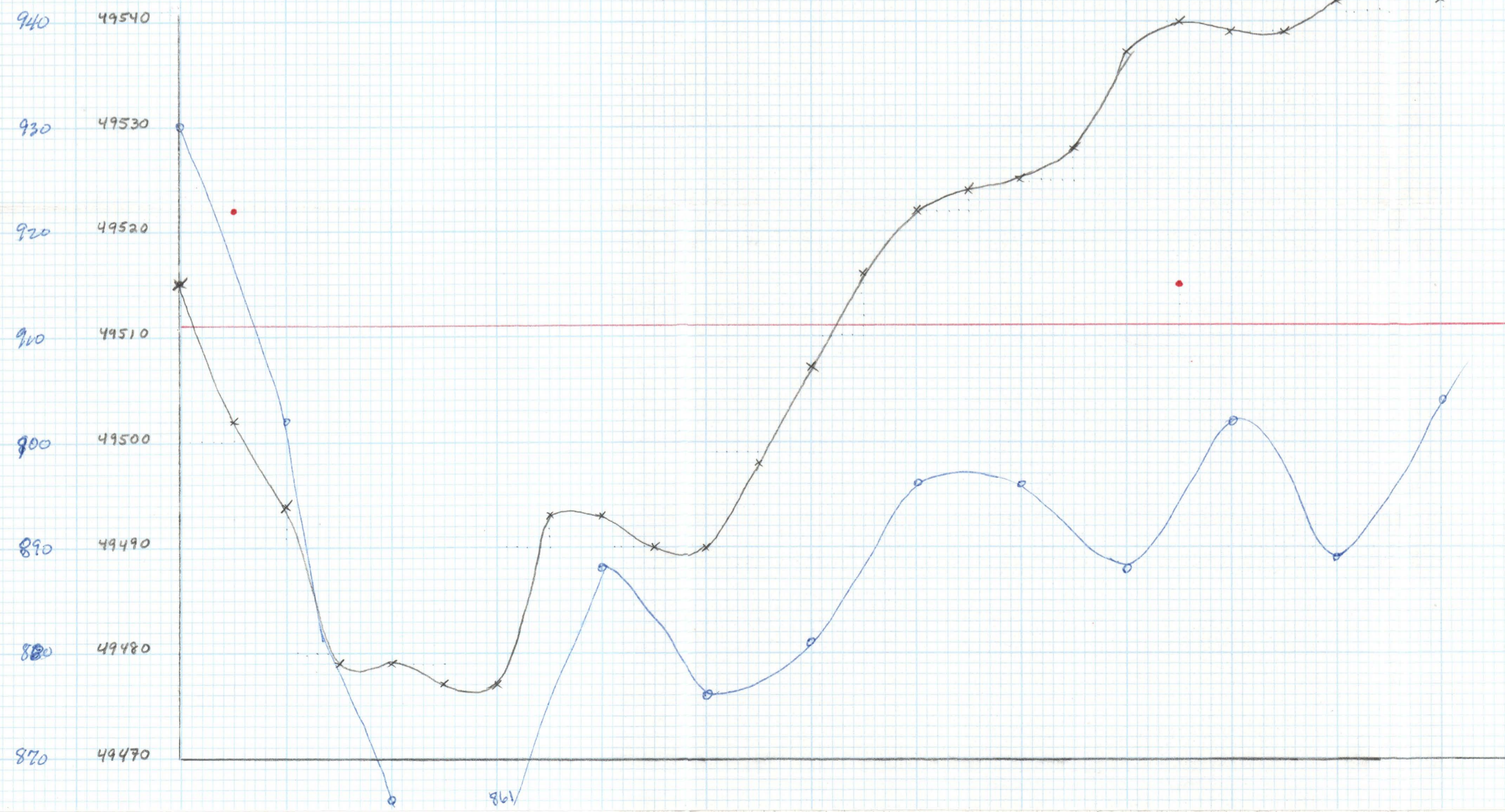




MAY 10, 1983

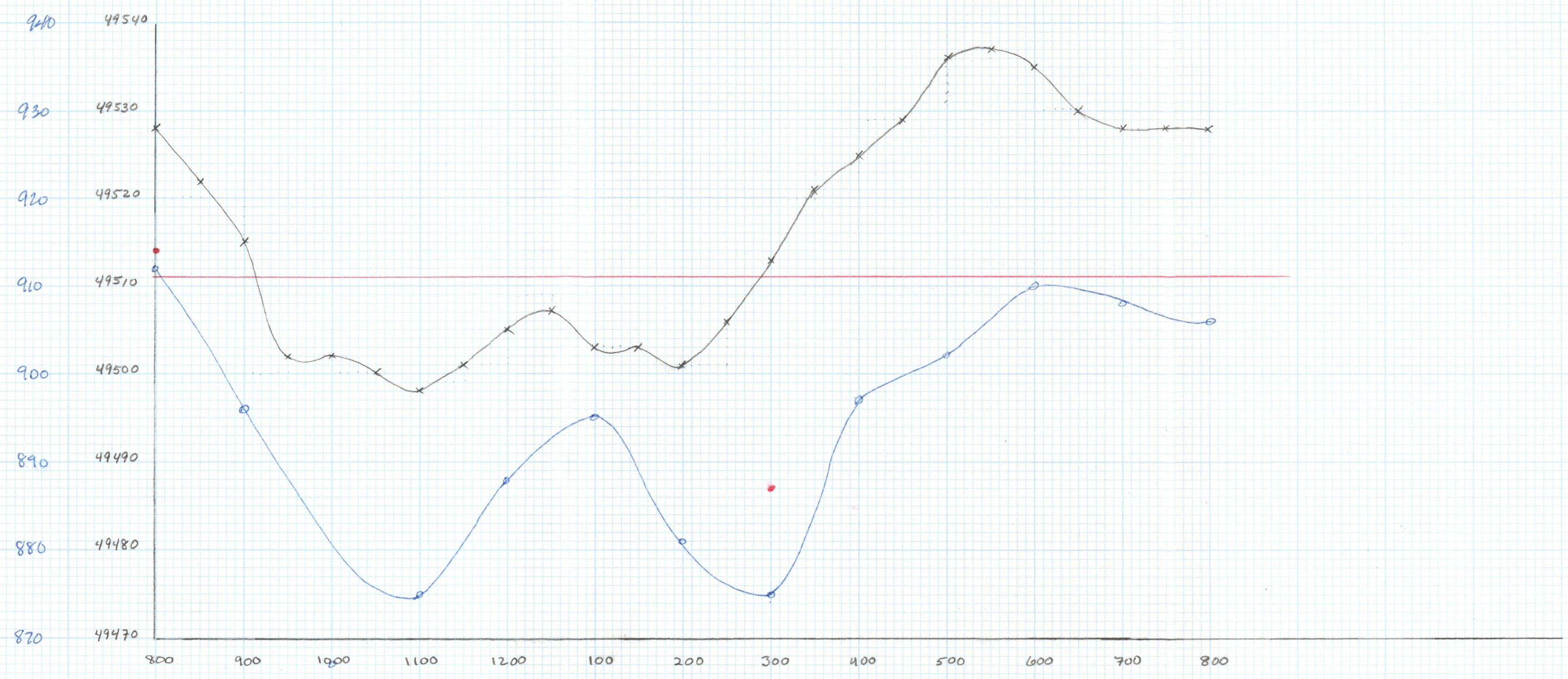


MAY 11, 1983





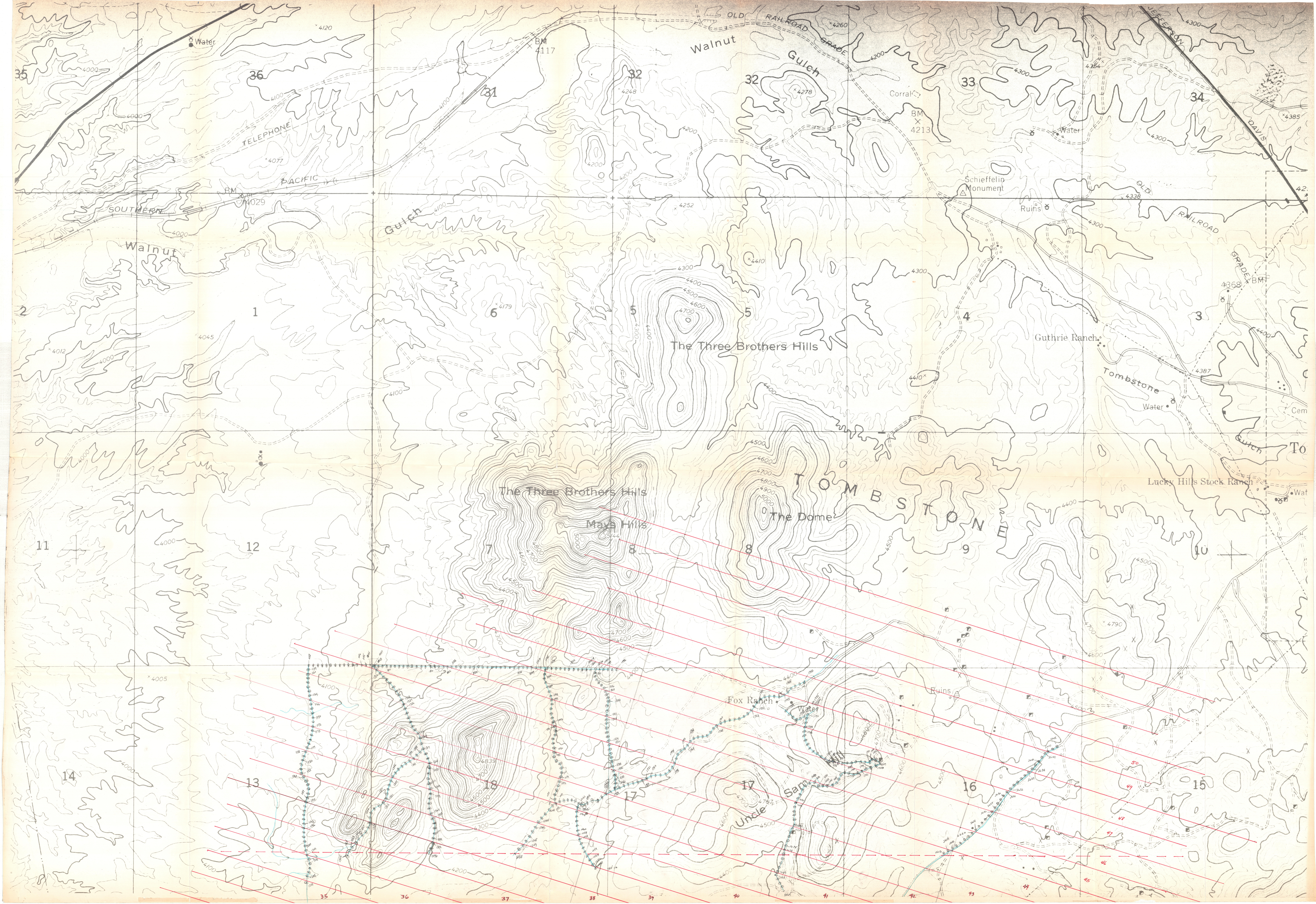
MAY 12, 1983











The Three Brothers Hills

The Three Brothers Hills

Mays Hills

The Dome

Fox Ranch

Uncle Sam

Guthrie Ranch

Tombstone

Lucky Hills Stock Ranch

Schiefelin Monument

Ruins

Ruins

Walnut Gulch

Gulch

Walnut Gulch

Gulch

Walnut Gulch

Gulch

To

Water

Water

Water

Wat

BM 41029

BM 4117

BM 4213

BM 4368

11

12

7

8

8

9

10

14

13

18

17

17

16

15

35

36

31

32

32

33

34

2

1

6

5

5

4

3

35

36

37

38

39

40

41

42

43

44

45

46

47

48

42

42

Cem

To

Wat

Ruins

15

48



Tombstone Az  
Ground Magnetic  
Map  
N 1/2

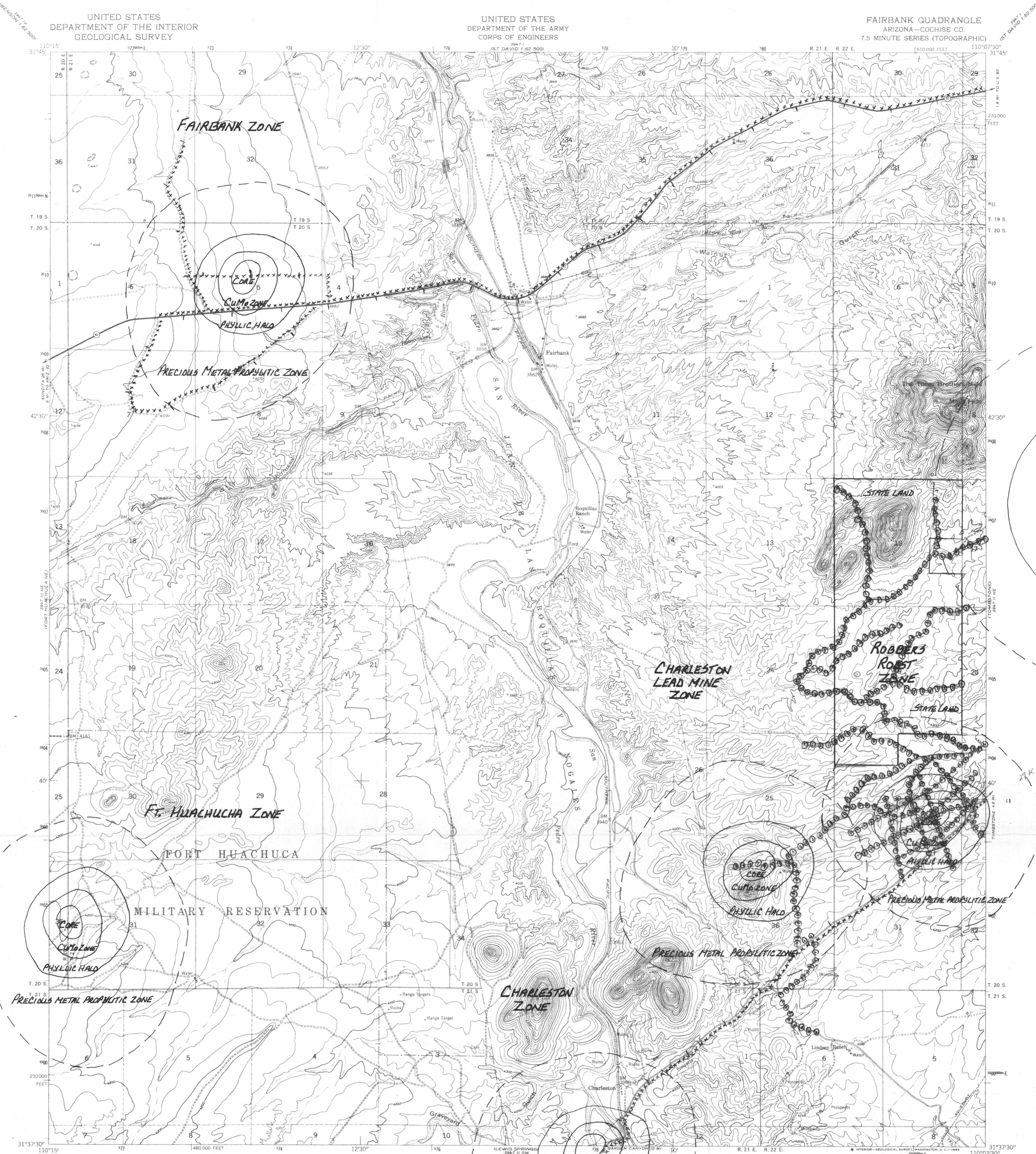
Prepared by T.E.  
Waltrip Jr.  
1983

Aeromagnetic  
map of Tombstone and  
vicinity  
Cochise and Santa  
Cruz Counties, Arizona  
D.C. Anderson  
C.M. Mitchell  
N.S. Tyson  
Scale 1:125,000  
1965  
Flour 9000' Barometer  
Elevation  
1964

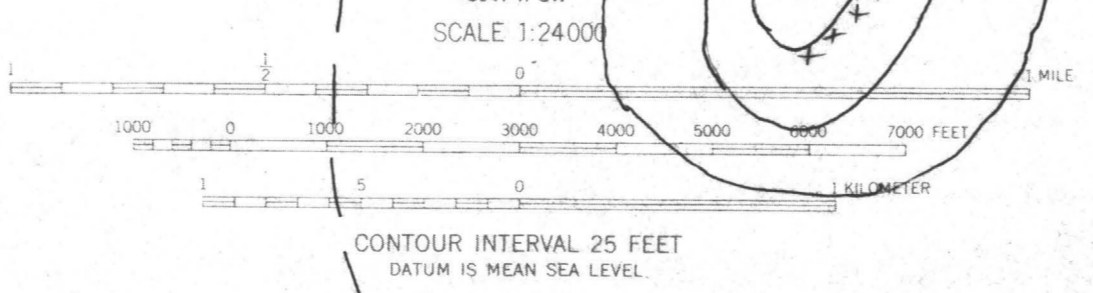
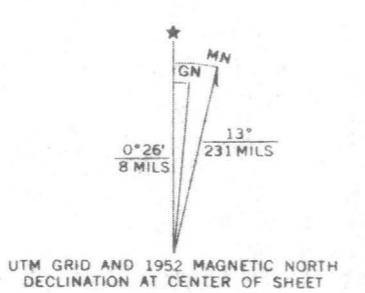








Mapped by the Army Map Service  
Published for civil use by the Geological Survey  
Control by USGS, USC&GS, and USCE  
Topography from aerial photographs by photogrammetric methods  
Aerial photographs taken 1951. Field check 1952  
Polyconic projection. 1927 North American datum  
10,000-foot grid based on Arizona coordinate system,  
east zone  
Unchecked elevations are shown in brown  
Dashed land lines indicate approximate locations  
1000-meter Universal Transverse Mercator grid ticks,  
zone 12, shown in blue

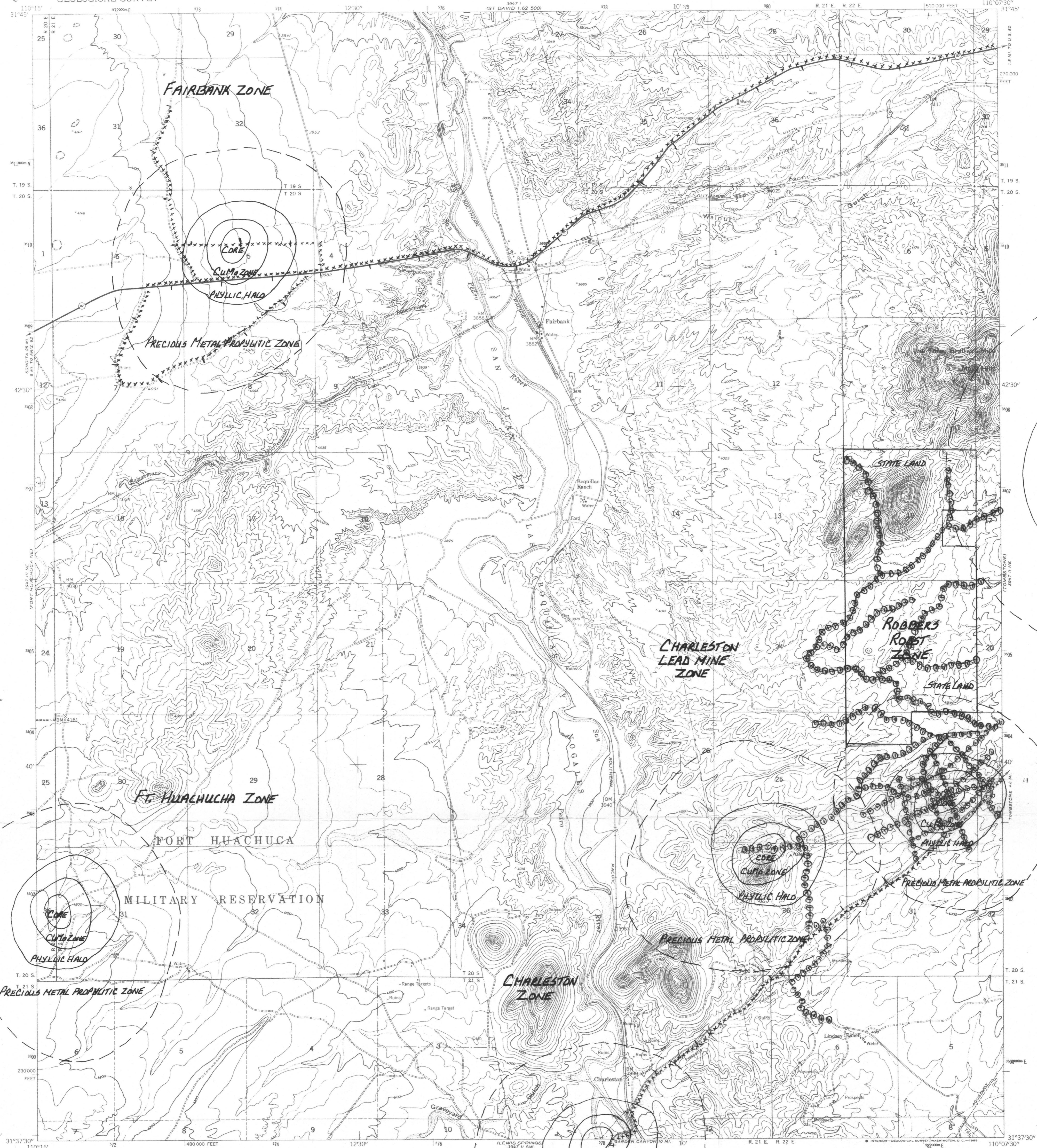


ROAD CLASSIFICATION

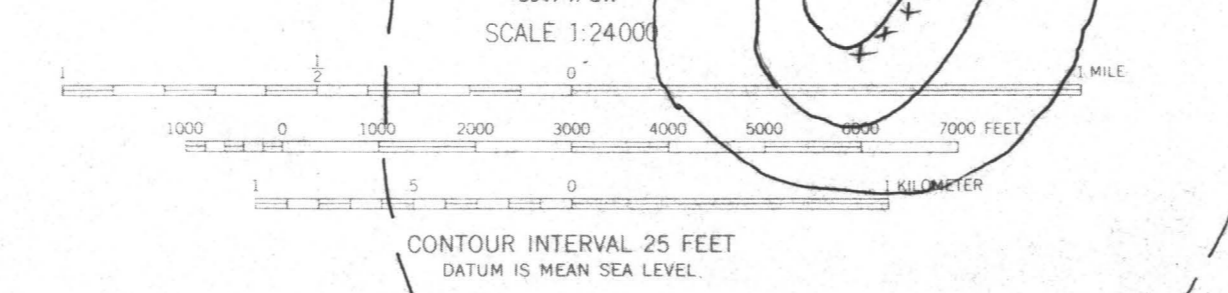
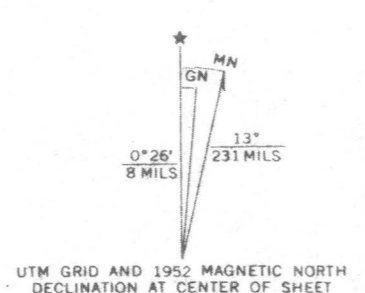
Heavy-duty	LANE 6 LANE	Light-duty
Medium-duty	LANE 6 LANE	Unimproved dirt
U. S. Route		State Route

FAIRBANK, ARIZ.  
N 3137 5—W 11007 5/7 5





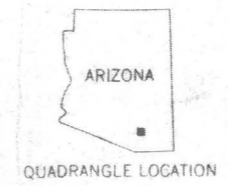
Map by the Army Map Service  
Published for civil use by the Geological Survey  
Control by USGS, USC&GS, and USCE  
Topography from aerial photographs by photogrammetric methods  
Aerial photographs taken 1951. Field check 1952  
Polyconic projection. 1927 North American datum  
10,000-foot grid based on Arizona coordinate system,  
east zone  
Unchecked elevations are shown in brown  
Dashed land lines indicate approximate locations  
1000-meter Universal Transverse Mercator grid ticks,  
zone 12, shown in blue



ROAD CLASSIFICATION

Heavy-duty	4 LANE 16 LANE	Light-duty
Medium-duty	2 LANE 8 LANE	Unimproved dirt

U.S. Route      State Route

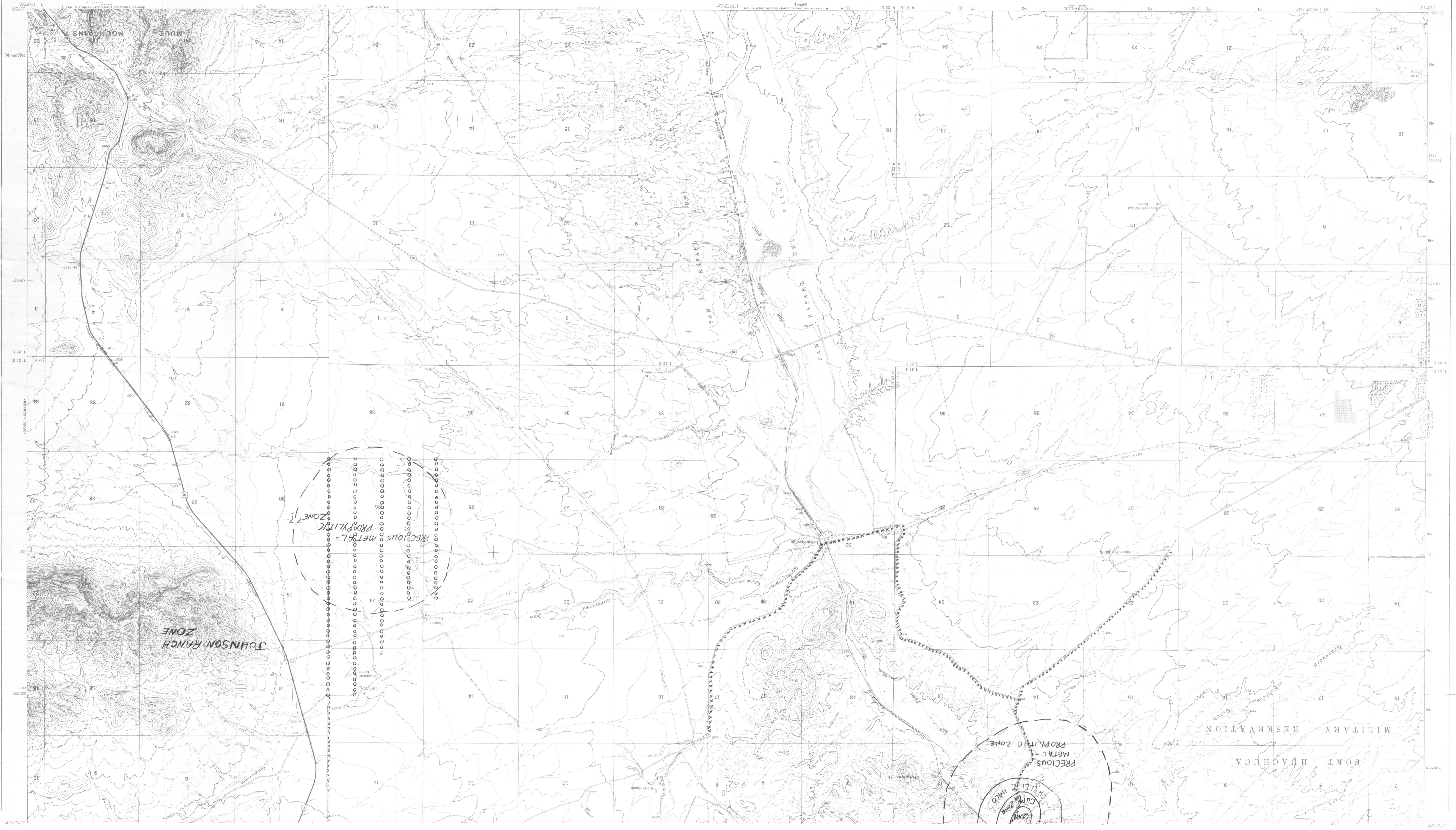


THIS MAP COMPLIES WITH NATIONAL MAP ACCURACY STANDARDS  
FOR SALE BY U.S. GEOLOGICAL SURVEY, DENVER, COLORADO 80225, OR WASHINGTON, D.C. 20242  
A FOLDER DESCRIBING TOPOGRAPHIC MAPS AND SYMBOLS IS AVAILABLE ON REQUEST

FAIRBANK, ARIZ.  
N3137.5—W11007.5/7.5  
1952  
AMS 3947 II NW—SERIES V898



700  
H



JOHNSON RANCH ZONE

PRECIOUS METAL ZONE

PRECIOUS METAL ZONE

PRECIOUS METAL ZONE  
HMO

FORT HUACHUCA

MILITARY RESERVATION

SAN RAFAEL VALLEY

SAN RAFAEL VALLEY

GOVERNMENT

GOVERNMENT

GOVERNMENT

GOVERNMENT

GOVERNMENT

GOVERNMENT

GOVERNMENT

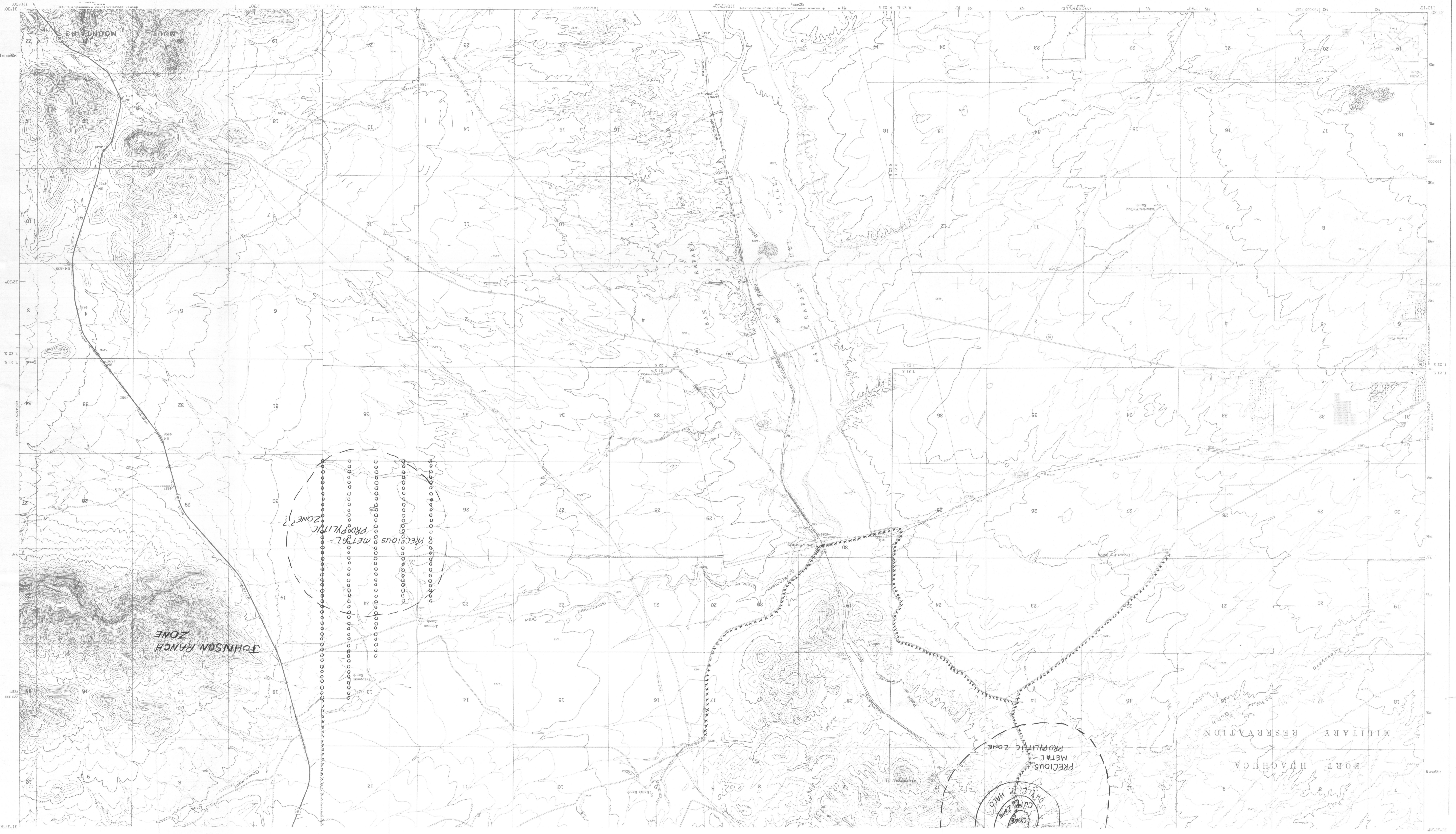
GOVERNMENT

GOVERNMENT

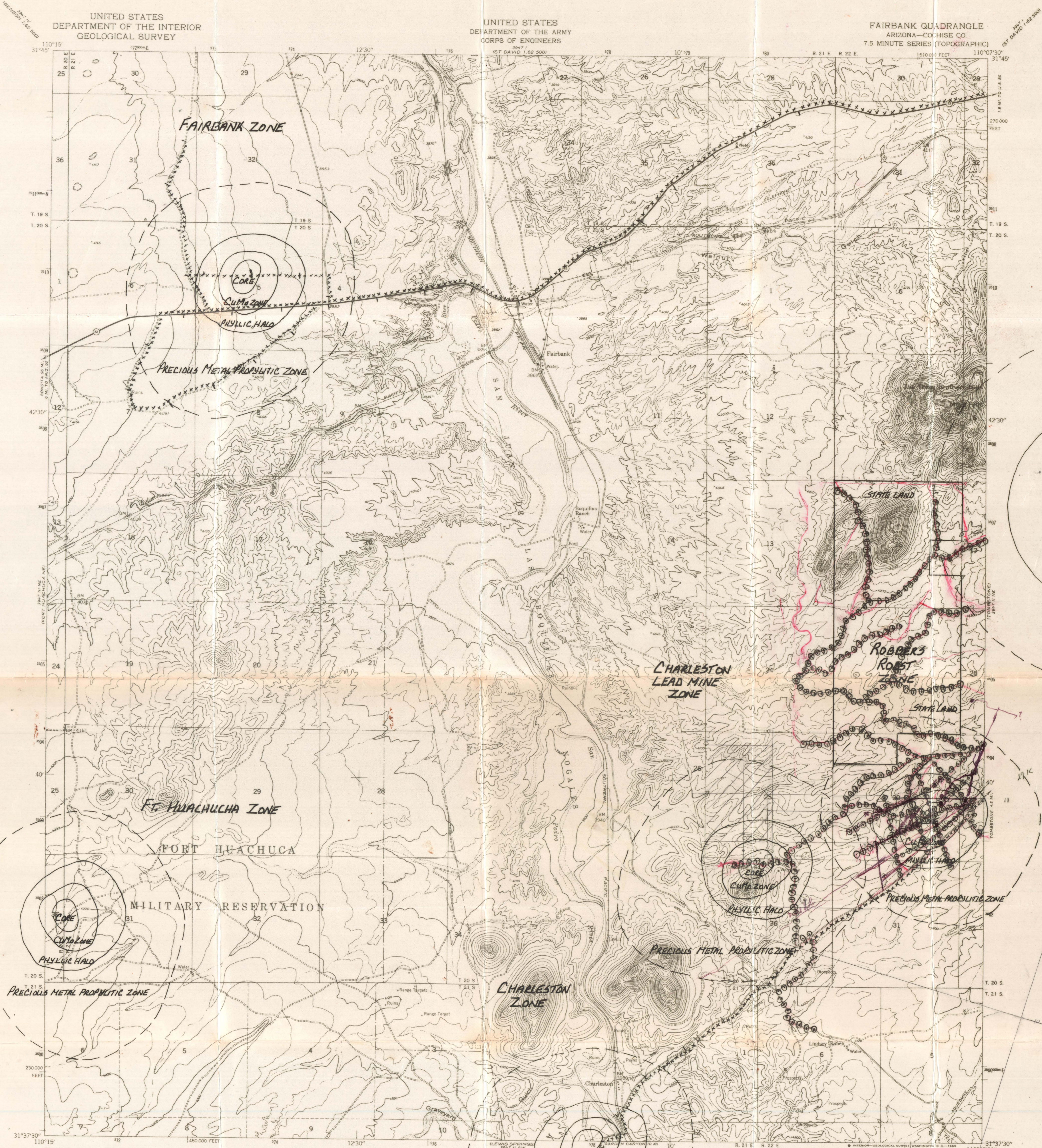
GOVERNMENT

GOVERNMENT

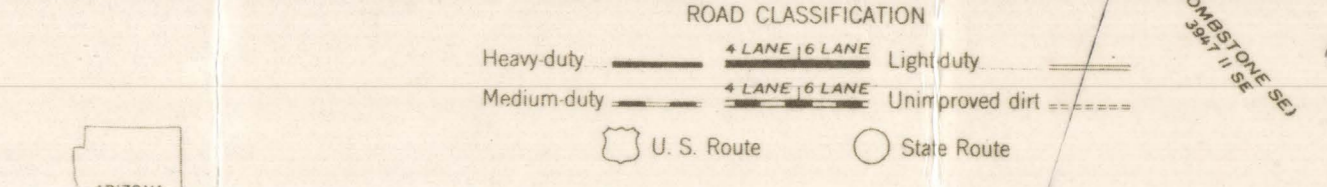
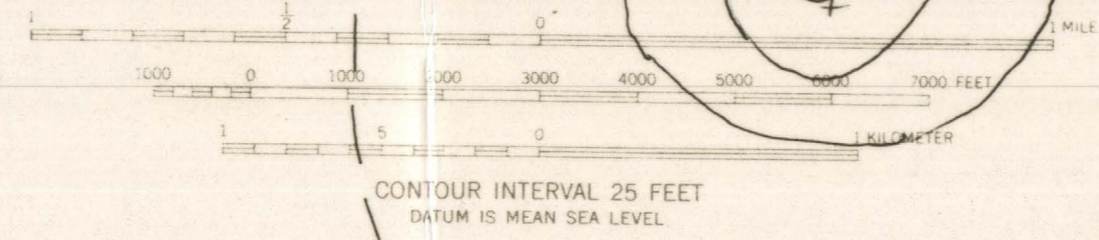
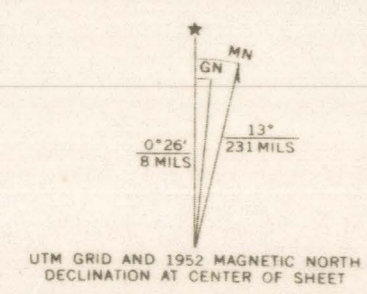
GOVERNMENT







Mapped by the Army Map Service  
Published for civil use by the Geological Survey  
Control by USGS, USC&GS, and USCE  
Topography from aerial photographs by photogrammetric methods  
Aerial photographs taken 1951. Field check 1952  
Polyconic projection 1927 North American datum  
10,000-foot grid based on Arizona coordinate system,  
east zone  
Unchecked elevations are shown in brown  
Dashed land lines indicate approximate locations  
1000-meter Universal Transverse Mercator grid ticks,  
zone 12, shown in blue



THIS MAP COMPLIES WITH NATIONAL MAP ACCURACY STANDARDS  
FOR SALE BY U.S. GEOLOGICAL SURVEY, DENVER, COLORADO 80225, OR WASHINGTON, D.C. 20242  
A FOLDER DESCRIBING TOPOGRAPHIC MAPS AND SYMBOLS IS AVAILABLE ON REQUEST

FAIRBANK, ARIZ.  
N31375-W110075/7.5  
1952  
AMS 3947 11 NW-SERIES V898

550  
48



XXXX = magnetic/mercury survey 1 station / 300 feet Mercury  
4 1 station every 100 feet Magnetic

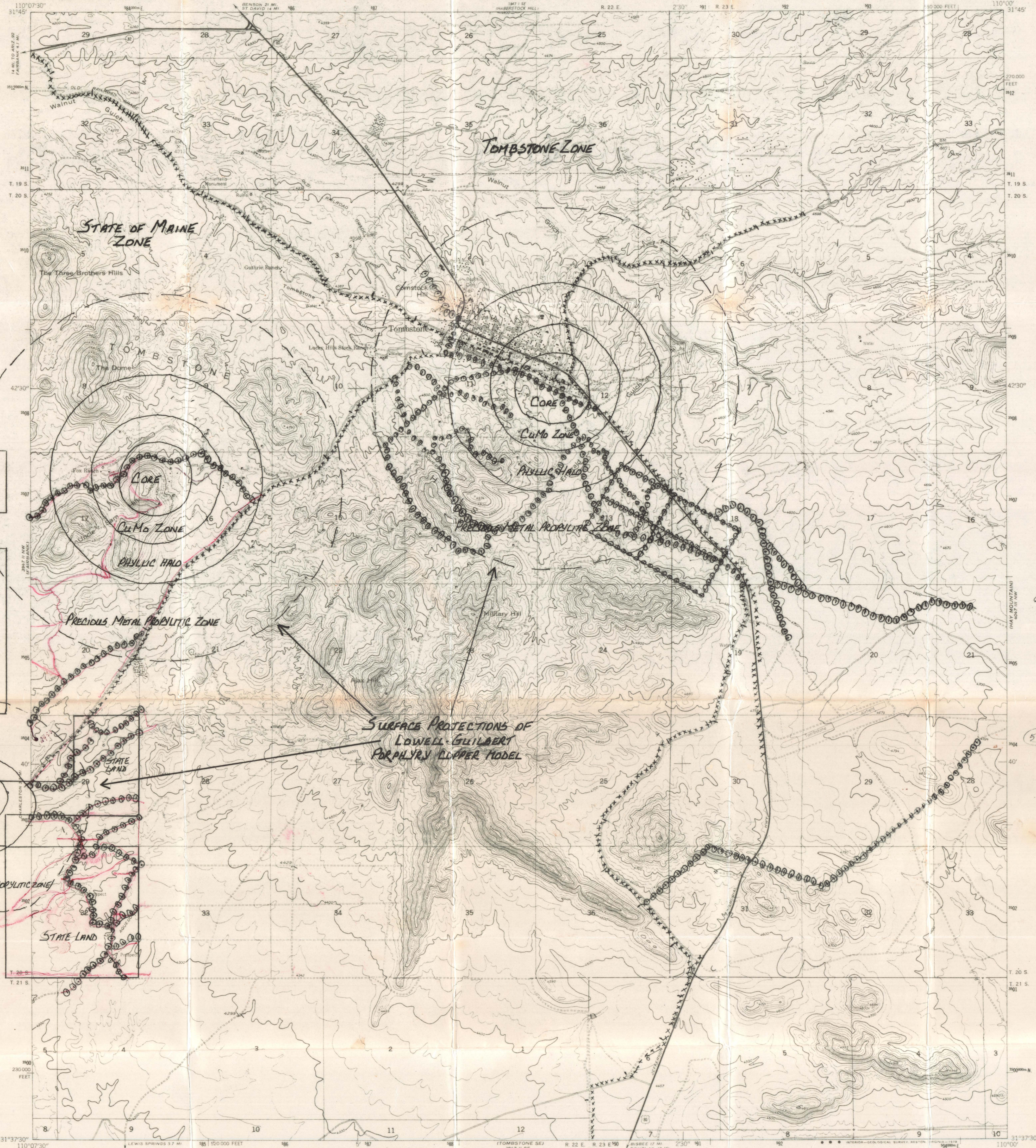
119

UNITED STATES  
DEPARTMENT OF THE INTERIOR  
GEOLOGICAL SURVEY

UNITED STATES  
DEPARTMENT OF THE ARMY  
CORPS OF ENGINEERS

TOMBSTONE QUADRANGLE  
ARIZONA-COCHISE CO.  
7.5 MINUTE SERIES (TOPOGRAPHIC)  
NE 4 TOMBSTONE 15' QUADRANGLE

1:50,000 FEET



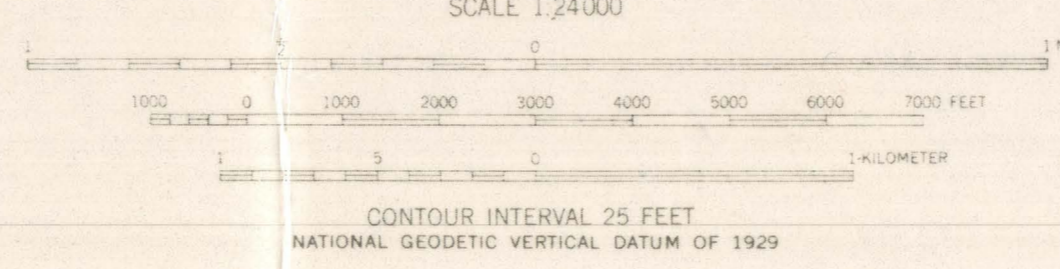
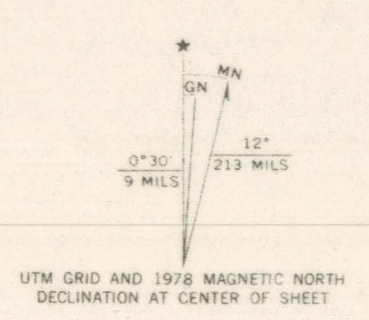
STATE LAND

STATE LAND

STATE LAND

SURFACE PROJECTIONS OF  
LOWELL GUILBERT  
PARALYRN CLIPPER MODEL

Map by the Army Map Service  
Published for civil use by the Geological Survey  
Control by USGS, USC&GS, and USCE  
Topography from aerial photographs by photogrammetric methods  
Aerial photographs taken 1951. Field check 1952  
Polyconic projection. 1927 North American datum  
10,000-foot grid based on Arizona coordinate system, east zone  
1000-meter Universal Transverse Mercator grid ticks,  
zone 12, shown in blue  
Unchecked elevations are shown in brown  
Revisions shown in purple compiled by the Geological Survey from  
aerial photographs taken 1976. This information not field checked  
Map edited 1978



THIS MAP COMPLIES WITH NATIONAL MAP ACCURACY STANDARDS  
FOR SALE BY U.S. GEOLOGICAL SURVEY, DENVER, COLORADO 80225, OR RESTON, VIRGINIA 22092  
A FOLDER DESCRIBING TOPOGRAPHIC MAPS AND SYMBOLS IS AVAILABLE ON REQUEST

TOMBSTONE, ARIZ.  
NE 4 TOMBSTONE 15' QUADRANGLE  
N3137.5-W11000/7.5  
1952  
PHOTOREVISED 1978  
AMS 3947 II NE-SERIES V898

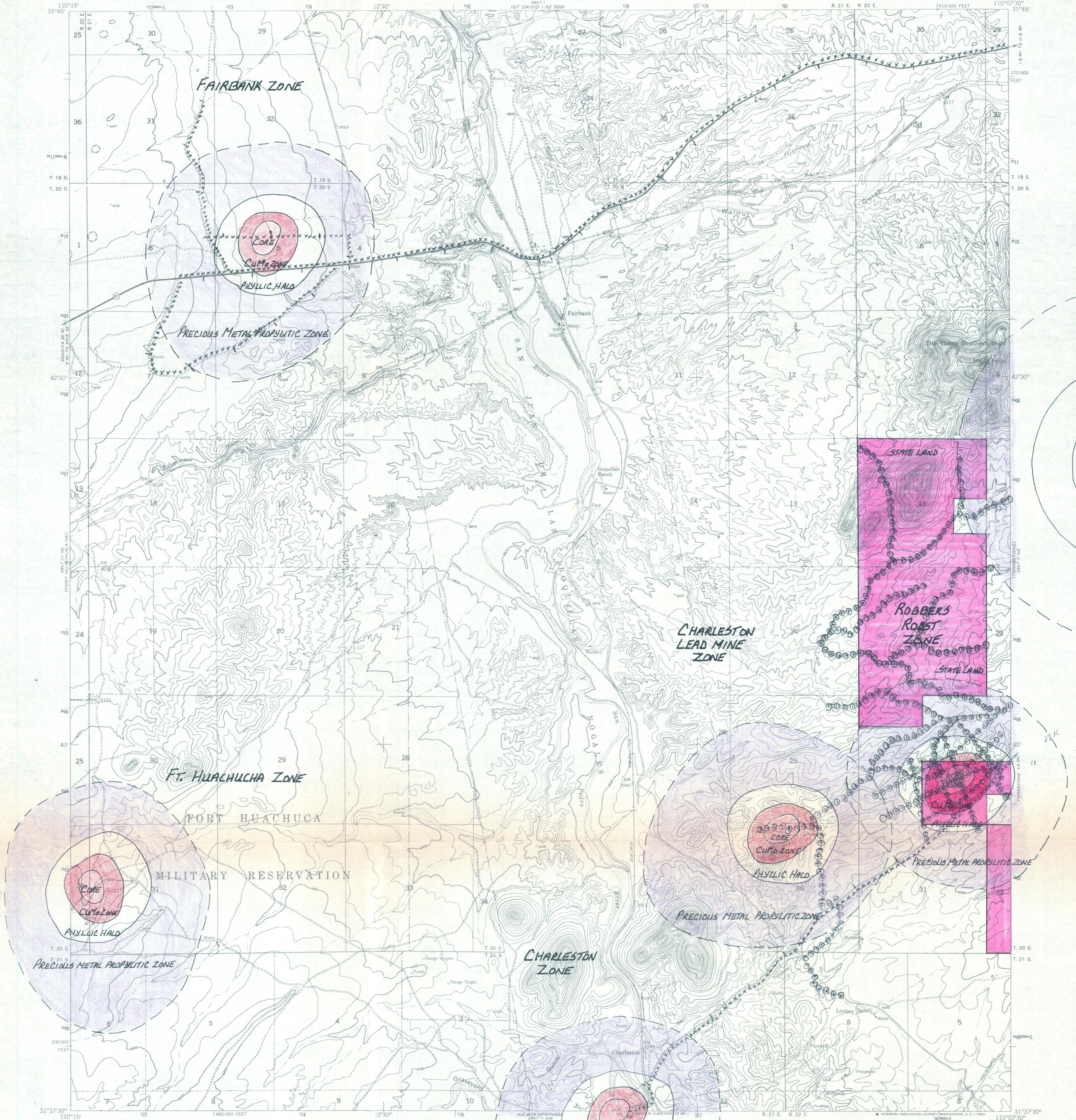
ELZ



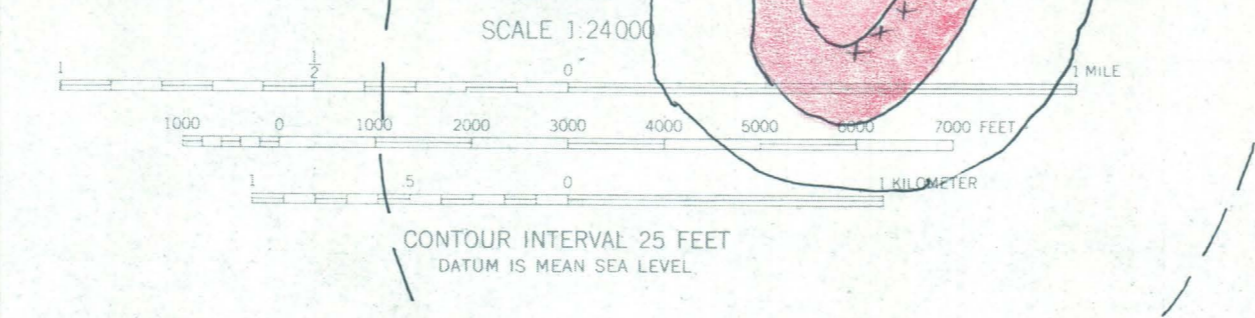
UNITED STATES  
DEPARTMENT OF THE INTERIOR  
GEOLOGICAL SURVEY

UNITED STATES  
DEPARTMENT OF THE ARMY  
CORPS OF ENGINEERS

FAIRBANK QUADRANGLE  
ARIZONA—COCHISE CO.  
7.5 MINUTE SERIES (TOPOGRAPHIC)



Mapped by the Army Map Service  
Published for civil use by the Geological Survey  
Control by USGS, USC&GS, and USCE  
Topography from aerial photographs by photogrammetric methods  
Aerial photographs taken 1951. Field check 1952  
Polyconic projection. 1927 North American datum  
10,000-foot grid based on Arizona coordinate system,  
east zone  
Unchecked elevations are shown in brown  
Dashed land lines indicate approximate locations  
1000-meter Universal Transverse Mercator grid ticks,  
zone 12, shown in blue



ROAD CLASSIFICATION  
Heavy-duty 4 LANE 6 LANE Light-duty  
Medium-duty 4 LANE 6 LANE Unimproved dirt  
U.S. Route State Route



FAIRBANK, ARIZ.  
N3137.5—W11007.5/7.5

1952  
AMS 3947 II NW—SERIES V898

THIS MAP COMPLIES WITH NATIONAL MAP ACCURACY STANDARDS  
FOR SALE BY U.S. GEOLOGICAL SURVEY, DENVER, COLORADO 80225, OR WASHINGTON, D.C. 20242  
A FOLDER DESCRIBING TOPOGRAPHIC MAPS AND SYMBOLS IS AVAILABLE ON REQUEST



