



#### CONTACT INFORMATION

Mining Records Curator  
Arizona Geological Survey  
416 W. Congress St., Suite 100  
Tucson, Arizona 85701  
602-771-1601  
<http://www.azgs.az.gov>  
[inquiries@azgs.az.gov](mailto:inquiries@azgs.az.gov)

The following file is part of the Kelsey Boltz Mining Collection

#### ACCESS STATEMENT

These digitized collections are accessible for purposes of education and research. We have indicated what we know about copyright and rights of privacy, publicity, or trademark. Due to the nature of archival collections, we are not always able to identify this information. We are eager to hear from any rights owners, so that we may obtain accurate information. Upon request, we will remove material from public view while we address a rights issue.

#### CONSTRAINTS STATEMENT

The Arizona Geological Survey does not claim to control all rights for all materials in its collection. These rights include, but are not limited to: copyright, privacy rights, and cultural protection rights. The User hereby assumes all responsibility for obtaining any rights to use the material in excess of "fair use."

The Survey makes no intellectual property claims to the products created by individual authors in the manuscript collections, except when the author deeded those rights to the Survey or when those authors were employed by the State of Arizona and created intellectual products as a function of their official duties. The Survey does maintain property rights to the physical and digital representations of the works.

#### QUALITY STATEMENT

The Arizona Geological Survey is not responsible for the accuracy of the records, information, or opinions that may be contained in the files. The Survey collects, catalogs, and archives data on mineral properties regardless of its views of the veracity or accuracy of those data.

HARRISON SCHMITT  
MINING GEOLOGIST  
COTTAGE SANATORIUM ROAD  
SILVER CITY, NEW MEXICO

April 12, 1957

Lewisohn Copper Corp.  
128 North Church Street  
Tucson, Arizona

**Subject:** Interim appraisal of the Peach-Elgin disseminated copper mineralization for open cast exploitation based on the past and current drilling results and the most recent geological information.

**SUMMARY OF CONCLUSIONS**

The development work on the Peach and Elgin areas at Helvetia is still not sufficiently advanced to form a basis for an accurate interim valuation. Mill concentration problems have been emphasized by the heavy oxidation disclosed, especially in the Peach area. Special research on the ore is required and for this, fresh bulk samples from underground workings will be needed. The churn drill sludges cannot be relied upon for definite conclusions. Test milling recoveries from them are likely to be too low.

The Elgin area is an excellent prospect for an additional tonnage of copper mineralization that is less oxidized than that at the Peach. Successful development of such mineralization could reduce the emphasis on the oxidized copper mineralization problem and at the same time, possibly make an ore body available for direct shipment to the operating and/or projected concentration plants in the Twin Buttes area.

The above program would not cover the Broad Top Butte area which appears to deserve testing by drilling.

The fact that the limits of the Peach area have not been defined to the east and northeast over a north-south distance of approximately 2400 ft., which includes a possible extension into the newly acquired Tip Top area and the large block of ground between the Peach and Elgin blocks, indicates the justification for a large ultimate drilling program which would start with around fifty holes. Part of this ground is about a hundred feet lower than the Peach and may be less oxidized.

The expense for the limited program proposed for the first stage would be around \$100,000. This plus the expense for the more complete program that can now be foreseen would be around \$432,000. The total time required would be around fourteen months.



## TEXT

At this date 27 churn drill and 17 diamond drill vertical surface holes have been completed in the Peach-Elgin area. Assay results are available up to and including hole C-49. The sampling of the churn drill holes was done according to standard procedure (Appendix 5). The diamond drill holes did not give satisfactory samples, and some of the locations may need to be re-drilled by churn drills.

Arthur Heyman made detailed geological studies of the area during the past twelve months or so. Substantial use of his work has been made when compiling the reserves, i. e., tonnage, grade, and distribution of the copper mineralization (Appendix 3). His summary of the geological setting is given in Appendix 4.

Tests of the milling or concentration characteristics of the churn drill hole sludges and diamond drill core samples have been made by Howard Hendricks. It is appreciated that sludge samples are not normally suitable for mill testing, but no other material has been available. Before underground openings for sampling could be planned, however, the position and size of the body of copper mineralization had to be determined. The substantial funds needed for such openings, furthermore, competed with the need of funds for the minimum of drilling required.

The drilling now completed indicates the high probability that the minimum tonnage believed to be required for a profitable operation, namely 20,000,000 tons of 0.8 to 0.9% copper will be blocked out or proved if drilling is continued. The minimum grade that is commercial depends, to a large degree, upon the maximum recovery of copper by milling. The uncertainty of obtaining an adequate recovery from a substantial part of the Peach mineralization, as confirmed by recent drilling, overshadows the need for immediate expansion of the drilling pattern. The Peach mineralization as now outlined appears to be around 40% oxidized. Among other things, milling recovery is decreased by the presence of chrysocolla and coated sulphides. An adequate recovery by standard flotation methods appears doubtful. The above facts, then, lead to immediate major problems: (1) the need for good samples for mill testing, and (2) the initiation of a research testing job on these samples.

Appended to this report are cross-sections through the Peach area of mineralization showing drill holes, individual assays, pertinent geology and a possible pit outline. The data are based on surveys by Robert Fordham and were compiled by Heyman, Fordham and me. Also appended is a plan map showing the locations of the cross-sections and the pertinent surface geological data.

The cross-sections transect some parts of the block of mineralization that are nearly or fully drilled out and others that are insufficiently drilled. In the first case, the largely geometrical standard terms proved (or positive),

probable and possible are used. In the second case a fourth term, geologically probable, is used. Here the geologic aspect assumes relatively great importance when judging and estimating the volume of mineralization.

CDH No. 49 was completed after the tonnage estimates were made. Its location and accompanying assays are shown on the plan map and Section 8482. A height of 250 ft. of copper mineralization includes a height of 205 ft. that assays 0.7% copper. The overburden is 185 ft. thick and waste-"ore" ratio is 230 to 205. There is 30 ft. of material in the capping that assays 0.63% copper. Possibly this material can be stockpiled and eventually milled.

The good results of this hole and of hole 38, along with fair results of hole 39, indicate the high probability that the Peach mineralization at the south end is curving eastward and pointing toward the Elgin area. CDH No. 46 was drilled on the extreme south side of the in-between area and cut 80 ft. of 0.65% copper.

The distribution of the holes suggests that the zone or belt of mineralization may be wider in this in-between area (see the surface map Appendix 1). Many more test holes are justified in this area.

The east side of the Peach mineralized area has by no means been defined. The drilling pattern is incomplete; and the diamond drill holes, especially 7, 8, 9, and 10, are of doubtful validity because the sludge was not consistent in volume or adequately recovered. Normally, the sludge assays higher than the core, especially where the core recovery is low. Holes 7 through 10, then, should be redrilled with churn drill rigs.

The data given on most of the cross-sections are largely self-explanatory. The "cut-off" grade used is around 0.4% copper depending on local conditions. A maximum backslope angle of 45 degrees is assumed for the east side where much of the area is massive limestone. On the west side, because of the known geological conditions, the backslope used can be at a very low angle with no loss of tonnage.

The more important blocks of waste in the drill holes are indicated. They have been removed from the tonnage and grade estimates and added to the waste tonnage. The tonnage reserve blocks on each cross-section were measured with a planimeter and the third dimension for obtaining the volume was derived by using the sum of one-half the distances to each of the two adjoining sections.

The grade of the copper mineralization of each cross-section was obtained by weighting the average grade of the intercept in each drill hole by the length of the intercept. The average grade of each of the main areas A (north Peach) and B (south Peach) was obtained by weighting the grade of each block of mineralization of a given category (proved, probable, etc.) by the tonnage represented.



The Elgin area, Area C, is partially developed by four drill holes, three at the apices of a 285 ft. equilateral triangle and a fourth about 1000 ft. west of the triangle. The area of outcropping favorable capping is 800,000 sq. ft, in round numbers. The average thickness of the waste and overburden in the three holes is 25 ft., and of the "ore" 143 ft., but the good ground may extend northwestward under the mantle rock there and westward may connect with the Peach area. The apparent favorable area calculates to 1,670,000 tons of waste and 10,400,000 tons of "ore" of an average grade of 0.73% copper. This area and the possible extensions noted is, of course, inadequately drilled. The drill hole pattern needs to be filled out for the apparent favorable area and extensions sought out. In the tabulations this tonnage of copper mineralization also is called geologically probable. The grade of the block as finally outlined, because of the variation usually expected in test holes, will probably be higher or lower than the average calculated for the above holes.

It should be emphasized that the weighting of the grade of the three areas, A, B and C, is distorted by the Elgin, or area C, because the true grade of the large geologically probable tonnage of the Elgin has not been established. In other words, the combined grade for the three areas may be higher.

The critical data pertaining to the above discussion are tabulated in Appendix 3.

The value of the property will remain indefinite until exhaustive milling or concentrating tests are made on the "ore," especially the "ore" on the Peach that is so heavily oxidized, and until the drilling outlines a minimum of 20,000,000 tons or, indeed, until the maximum limits of the mineralized areas are found. The latest drilling on much or all of the east side of the Peach has yet to find the limit in that direction.

The Broad Top Butte area, in the eastern part of the area owned by the Company, is one of widespread brecciation and copper staining. This area should be kept in mind as one that has a good chance of containing another block of commercial copper mineralization. The local rock is brecciated quartzite and porphyry so standard leaching methods should be feasible on any oxidized blocks of mineralization as may be found.

Previous estimates using depletion, amortization and taxation factors have indicated that an adequate profit can be made if the following minimum basis is used:

Tonnage	20,000,000
Grade	0.9% copper
Price of copper	\$0.30 per pound
Stripping ratio	1 to 1
Recovery	80%
Rate of milling	2,500 per day



The milling tests so far made by Howard Hendricks are listed in Appendix 6. The average recovery by flotation was 66.1%. The leaching tests indicate that the pulps have a high acid neutralizing power.

### Conclusions.

The activity at Helvetia is still one of development of mineralized ground that cannot yet be called an ore body or ore bodies. The two chief current problems are (1), the most important, the development of a milling method that will give an adequate recovery of copper from the bulk of the Peach mine mineralization and, (2) the completion of the drilling program. The latter work, at first at least, would seem to require most immediate emphasis on the Elgin area (Area C). This is because the development of a large amount of less oxidized ground such as has so far been revealed there, would take the emphasis away from the substantially oxidized Peach "ore" and raise the overall average of anticipated mill recovery. Furthermore, the development of some millions of tons of high-recovery copper mineralization with a low overburden-to-"ore" ratio would probably make feasible an enterprise of shipping ore by truck to the Duval Sulphur and Potash Company's proposed mill at Twin Buttes or to the Mineral Hill and/or the Pima Mine Mills in the same district.

The estimated minimum reserves of proved, probable, possible and geologically probable blocks in the Peach area are 9,538,758 tons with a grade of 0.869% copper (Appendix 3, Table III). Certain possibilities east of this block are not included in this total. On the Elgin ground, because of the size of the area of favorable capping and the good results of the first drill holes, there is a high geological probability of a minimum of ten million tons of high mill recovery, low waste ratio "ore" in this area. The possibilities of the area between the Elgin and the Peach are not included in this estimate.

It is proposed that, at first at least, up to 500 ft. of adit workings in the Peach area be planned and executed for the purpose of obtaining bulk samples for mill concentration testing. The two adits already started should be extended. The work proposed would be too limited to obtain a "fair assay sample" of the bulk of the mineralization. But a mineralogical sample suitable for mill testing could be obtained with roughly the average proportion of the different minerals and ores. The testing should be done on a research basis that should go beyond routine flotation treatment. Leaching methods should of course be considered. The neutralizing limestone present might swing the emphasis to ammonia leaching, although ammonia will not leach chrysocolla according to George H. Roseveare, of the State Bureau of Mines. He also stated that since chrysocolla absorbs soluble copper, a small amount of copper sulphate added to the pulp might promote the flotation of that mineral. In any case a new approach is needed.

The direct expense, for the work proposed above, would be around \$15,000 for the adit driving and possibly \$10,000 for the mill testing.

For the short term, only slightly less in immediate importance, is the continuation of the development of the Elgin area by drilling. Ten more holes averaging about 300 ft. deep would outline the possibilities. These holes would total around 3,000 ft. and would cost around \$15 a foot for direct cost. The total direct expense, then, to carry out the suggested underground development test work and drilling would be around \$70,000. This program would take about six months. For this period about \$30,000 additional would be required for overhead. The total expense, then, would be around \$100,000.

This above work, however, is really only a proposed immediate next step. To largely fill in the drilling pattern now indicated as needed where the limits of the "ore" have not been found and to extend it to areas now indicated as geologically favorable, would require a minimum of fifty additional holes averaging 350 ft. deep. This 17,500 ft. of hole would cost \$262,500 and take around eight months for completion. At the same time, the underground work needed for checking the sampling of the holes, proving continuity between holes and obtaining adequate samples for mill testing, could proceed. This program, which would be an extension of the 500 ft. of work proposed as a preliminary need to obtain samples for immediate mill testing work would require an additional 1000 ft. of headings, raises and winzes and the necessary operating expense of an accompanying sampling plant. Such a plant is owned by the Company and is now set up at one of the adits.

If all the above indicated work is done, the total expense would be around \$432,000. This breaks down as follows: First stage and/or minimum stage as described above, \$100,000. Expense of additional drilling to presently indicated completion, \$262,000. Expense of additional underground work, \$30,000. Overhead for an additional eight months, \$40,000. Total expense - \$432,000.

If the completion of all this work still does not define the ultimate limits of the ore body or bodies, correspondingly more drilling will be required, but this might proceed as a plant was being built and/or mining was taking place. The tonnage developed that exceeds the immediate target of 20,000,000 tons of proved ore will accelerate the justification of still further drilling because, everything being equal, the value of the property will increase at a rate greater than the increase in tonnage.

Harrison A. Schmitt





# APPENDIX 3

## Tabulation of Results of Tonnage and Grade Calculations

### TABLE I

Tonnage and Grade, Area A (North Peach)

Section Number	Copper Mineralization							Waste Tonnage <sup>2</sup>
		Proved		Probable		Possible		
	Block Number	Tonnage <sup>1</sup>	Grade (% Cu)	Tonnage <sup>1</sup>	Grade (% Cu)	Tonnage <sup>1</sup>	Grade (% Cu)	
10,380	1					91,020	0.764	231,394
	2			92,250	0.764			
	3					16,912	0.764	
10,264	4					144,590	0.970	582,403
	5			104,566	0.970			
	6					110,041	0.970	
10,161	7					153,600	0.956	561,785
	8	402,300	0.956					
	9			57,600	0.956			
	10	239,400	0.956					
10,000	11	1,013,841						1,410,177
9,851	12					212,244	0.914	442,245
	13	762,710	0.914					
9,759	14					74,983	0.841	730,659
	15	702,293	0.841					
9,602	16					75,123	0.717	479,081 <sup>3</sup>
	17			360,405	0.717			
9,497	18					52,473	0.627	315,550 <sup>3</sup>
	19			168,770	0.627			
	20					65,621	0.627	
9,380	21			206,427	0.759			308,501 <sup>3</sup>
	22					74,029	0.759	
9,236	23					155,952	0.891	846,494
	24	447,998	0.891					
9,123	25					132,699	0.882	1,080,481
	26	508,295	0.882					
TOTAL		4,076,837	0.926	990,018	0.758	1,359,287	0.868	6,988,770
Combined Total:		6,424,142 Tons		0.888% Copper		6,988,770		

1. Eleven cubic feet per ton of copper mineralization.

2. Twelve cubic feet per ton of waste.

3. Waste tonnage determined by using same ratio of ore to waste as found in average of all Sections, except 9602, 9497 and 9380.



Please reply to:

POST OFFICE BOX 20766  
2871 SKY HARBOR BLVD.  
PHOENIX, ARIZONA 85034  
PHONE 602 267-0605

## NUCLEAR DYNAMICS, INC.

POST OFFICE BOX 2337  
100 EAST UNION STREET  
PRESCOTT, ARIZONA 86301  
PHONE 602 445-0834

April 27, 1970

Mr. Leon A. Brossier, Treasurer  
Leisure Planning Corporation  
1700 Broadway  
New York, New York 10019

Re: Leisure Planning--Lewisohn  
Purchase Contract

Dear Mr. Brossier:

Enclosed please find three (3) blueline prints of a map prepared by Hamilton A. Higbie, a Registered Professional Geologist, whom we engaged to decipher some of the Lewisohn-Leisure Planning Corporation holdings in the Helvetia district.

You will note that the exact locations of many of the claims cannot be determined without an "on the ground" survey. This procedure would be prohibitively expensive at this time. Therefore Mr. Higbie included a narrative description of the locations of these various claims in order to convey an idea as to their relationships to the claims displayed.

A statement of Mr. Higbie's services is enclosed. The cost to Leisure Planning Corporation is 50% of that amount or \$459.01.

Sincerely,

NUCLEAR DYNAMICS, INC.



Kelsey L. Boltz  
Vice President

KLB:jsh

Enclosures

The Lewisohn Claim Group Map is filed

~~44~~ A6.

F4F6

*Lewisohn Proj.*

- ✓ 1. Ruby Claim - The length of the claim is 1500 feet, 300 feet in a southerly direction and 1200 feet in a northerly direction from this location notice together with 300 feet in width on each side. Surface boundaries are as follows: <sup>*founded*</sup> on the east in part by four claims. Northerly, Four Spades; west in part by Pat claims; the Gap and
- ✓ 2. Irish Claim - The length is 1,000 feet, 250 feet in a southerly direction and 750 feet in a northerly direction together with 80 feet in width on each side of the center of said claims. Claim is bounded on the south by PAT claims *Elgin* Algae and west by PAT claim Monitor, the north by PAT claim Gap and on the east by
3. Axe Claim: The length of this claim is 1300 feet with 650 feet in a northerly direction and 650 feet in a southerly direction together with 300 feet in width on each side of the center of said claim. Said claim is approximately 1/2 mile northerwesterly from the old Helvetia Post Office and about 3/4 mile southerly from the old \_\_\_\_\_ Ranch. Boundary of said claim is as follows: Beginning point in a northeasterly direction 650 feet from the discovery shaft being in the center of the northeast end line, east southeasterly 165 feet to a monument of stone being the NE corner of said claim; thence southwesterly 1300 feet to a monument being at the SW corner of said claim; thence ~~north-~~  
~~easterly 1300 feet southwesterly 165 feet to the place of beginning.~~ northeasterly 1300 feet to a monument; thence southeasterly 165 feet to the place of beginning.
- ✓ 4. Adolph Lewisohn - The claim is 1500 feet long by 600 feet in width. The southwest corner and the NW corner of this claim are common to the SE corner NE corner, respectively, Lafayette patented mining claim. End lines also run parallel to the Lafayette. Surface boundaries are as follows: Beginning at a post in a southerly direction 750 feet from the discovery shaft at ~~xx~~ which this notice is posted being the center of the south end line, thence 300 feet to a post being the SW corner of said claim; thence 1500 feet north 12°30' west to a post being the NW corner of said claim; thence 300 feet south 87°45' east to a post at the center of the N end of said claim; thence 300 feet to a post being the NE corner of the said claim; thence 1500 feet to a post at the SE corner of said claim; thence 300 feet to the place of beginning.
- ✓ 5. Rosemont - 1500 feet by 600 feet southwest and NW corners of this claim are common to the SE and NE corners, respectively, of the R. C. Ingersol, a patented mining claim. The surface boundaries are as follows: Beginning at a post at a point in a southerly direction 750 feet from the discovery shaft being in the center of the S. end line; thence 300 feet to a post being the SW corner thence 1500 feet north 3°15' east to a post being at the NW corner; thence 300 feet south 87°45' east to a post at the center of the north end; thence 300 to a post being at the NE corner of the claim; thence 1500 feet to a post at the SE corner of said claim; thence 300 feet to the place of beginning.
- ( 6. Albert Steinfeld - The length is 1500 feet by 600 feet. The ~~NE~~ NW corner the north end center and the NE corner of this claim are common to the SW corner, the south end center and the SE corners, respectively, of the Lafayette - a patented mining claim. The side lines are also parallel to that claim.

- ✓ 7. Hugh Young - 1500' x 600'. The W side line of this claim lies parallel and 600' removed from the E side line of the Lafayette. The end lines of this claim lie along the lines of extension of the Lafayette claim.
- ✓ 8. Fred Bennett - 1500' x 600'. This claim adjoins the R. J. Ingersol patented mining claim on the west ~~side~~ with parallel sides and end lines., ~~SSS~~ i. e., the north end line of the Fred Bennett is a western extension of the R. J. Ingersol.
- ✓ 9. Ethel = 1500' x 600'. ~~SSS~~ The north end line of this claim lies along the east side line of the Patrick Henry patented. The east side lines lie parallel to the side lines of the Lafayette patented, through a point SW of the west side line of the Lafayette and 600' deep.
- ✓ 10. Albert - 1500' x 600'. The N end line of this claim lies along the E side line of the Patrick Henry patented and the east side line ~~of the~~ and the east side line lies along the line of the west side line of the Lafayette patented.
11. Rosemont #23 - 1500' x 600'. situated 1 mile east and north from U. S. mineral monument 1299 in T18S, R16E.
12. Rosemont #24 - 1500' x 600'. a mile north and east from U. S. Mineral Monument 1299 in T18S, R16E.
13. Rosemont #4 - 1500' x 600'. A mile north and east from U. S. Min. Mon. 1299, T18 S, R16E.
14. Rosemont #20 - 1500' x 600' about a mile east and north from U. S. Min. Mon. 1299, T18S, R16E.
15. Rosemont #2 - 1500' x 600' approx. a mile north and east from U. S. Min. Mon. 1299, T18S, R16E.
16. Rosemont #25 - 1500' x 600' one mile east and north from U. S. Min. Mon. 1299, T18S, R16 E.
17. Rosemont ~~#2~~ #3 - 1500' x 600' approx./east and north from U. S. Min. Mon. 1299, T18S, R16E.
18. Rosemont #1 - 1500' x 600' approx. a mile east and north from U. S. Min. Mon. 1299, T18S, R16E.
- 2 ✓ 19. Flat Top - no dimensions given. Surface boundaries as follows: Beginning at open ground situated so that it is bounded E by the Newman, W by the Gap and Monitor, S. by the Elgin - all are patented claims.
- 2 ✓ 20. Round Top - no dimensions given. Beginning at open ground situated so that it is bounded on the E. by the Gap, W. by the Peach and south end and on the south by the Monitor - all being patented claims.



21. Alachua - 1500' x 600'. one mile in a westerly direction from <sup>Helvetia</sup> ~~Alachua.~~  
Surface boundaries are as follows: ~~XXXXX~~ Beginning at a monument 100'  
x in a westerly direction from the discovery shaft being in the center of the  
westerly line of said claim; thence 750' to a mon. being SW cor. of said  
claim, thence easterly to side line of Boston claim; thence along side line  
of Boston and South End claims to center line south to a side line of the S.  
end; thence southerly 850 feet to a mon. to the center of said claim which  
is point of beginning.
22. Baker - ~~XXX~~ 1500' x 600'. One mile westerly from <sup>Helvetia</sup> ~~Alachua.~~
23. Dade - 1500' x 600' One mile westerly from <sup>Helvetia</sup> ~~Alachua.~~
24. Eustis - 1500' x 600' about one mile in a westerly direction from <sup>Helvetia</sup> ~~Alachua.~~
25. Flagler - 1500' x 600'. About one mile in a westerly direction from <sup>Helvetia</sup> ~~Alachua.~~
26. Glades - 1500' x 600'. About one mile in a westerly direction from <sup>Helvetia</sup> ~~Alachua.~~
27. Hillsborough - 1500' x 600'. About one mile in a westerly direction from  
~~Alachua.~~ <sup>Helvetia.</sup>
28. Indian River - 1500' x 600'. About one mile in a westerly direction from  
~~Alachua.~~ <sup>Helvetia.</sup>
29. Jackson - 1500' x 600'. About one mile in a westerly direction from  
~~Alachua.~~ <sup>Helvetia.</sup>
30. Kissimmee - 1500' x 600'. One mile in a westerly direction from <sup>Helvetia</sup> ~~Alachua.~~
- ✓ 31. Liberty - 1500' x 600'. About one mile in a westerly direction from <sup>Helvetia</sup> ~~Alachua.~~  
Surface boundaries are as follows: Beginning at a monument at a point in  
a southerly direction 100' from discovery shaft being the center of the south end  
line of said claims; thence easterly to center of west side line South End claim;  
thence northerly along west side line Boston and Peak claims to a point 1400'  
north of beginning monument; thence westerly to NE corner of Kissimmee claim;  
thence 1500' \_\_\_\_\_ being at the SW corner; thence easterly  
300' to ~~xxx~~ point of beginning.
- ✓ 32. Manatee - 1500' x 600'. About one mile westerly from <sup>Helvetia</sup> ~~Alachua.~~ Surface  
boundaries being as follows: Beginning at monument at a point in a westerly  
direction 100' from discovery shaft being in the center of the west end line of  
said claims; thence 300' to a mon. being SW cor.; thence easterly to the west  
line of Peach claim; thence northerly along west side line to Peach claim to  
a point 300 north of beginning monument. Thence westerly to the NE corner of  
Putman claim; thence 300' southerly to point of beginning.
- ✓ 33. Nassau - 1500' x 600' about one mile westerly from <sup>Helvetia</sup> ~~Alachua.~~ Surface boundaries  
as follows: Beg. at mon. at point in a westerly direction 100' from the discovery  
shaft being in the center of the W. end line; thence 300' to a mon. being the  
SW cor. of said claim. Thence easterly to west line of Peach claim; thence

northerly along west line of Peach claim. to a point 300' N. of beginning monument; thence westerly to NE cor. of Okechobee claim; thence 300' southerly to point of beginning.

34. Okeechobee - 1500' x 600'. About one mile in a westerly direction from Helvetia.
35. Putnam - 1500' x 600'. About one mile in a westerly direction from Helvetia.
- ✓ 36. Duzy - 1500' x 600'. 1/2 mile in a westerly direction from Helvetia. Surface boundaries being as follows: Bounded on the North by the Monitor, on the West by the Boston, South by the Telephone and Sunset, and on the East by the Elgin - all claims being patented.
- ✓ 37. The Suzy - no dimensions given. About 1/4 mile westerly from Helvetia. Surface boundaries being as follows: Bounded ~~by~~ on the west by the South End, on the south by the Boston, on the east by the Monitor - all patented claims.
38. Rosemont - 1500' x 600'. About 1/2 mile in a southerly direction from the Rosemont.
39. Adolph Lewisohn - 1500' x 600'. About one mile in a southerly direction from Rosemont.
40. - Rosemont #11 - 1500' x 600'. About one mile in a northeasterly direction from U. S. Min. Mon #1.
- 41 Rosemont #7 - 1500' x 600'. About one mile in a southeast direction from Rosemont.
42. Hugh Young - 1500' x 600'. About one mile in a northeasterly direction from U. S. Min. Mon. #1.
43. Rosemont #8 - 1500' x 600'. One and 1/2 mile in a southeasterly direction from Rosemont.
44. Rosemont #9 - 1500' x 600'. About two miles in a southeasterly direction from Helvetia.
45. Fred Bennett - 1500' x 600'. 1/2 mile in a southerly direction from Rosemont.
46. Rx - 1500' x 600'. 1/2 mile in a westerly direction from Rosemont.
47. Albert Steinfeld - 1500' x 600'. About 1-1/2 mile in a southerly, southeasterly direction from the Rosemont.
48. Rosemont #14 - 1500' x 600'. About 1-1/2 mile in a southeast direction from Rosemont.

64. Leon - 1500' x 600' About 1-1/2 mile NW from Helvetia.
65. Brevard - 1500' x 600'. About 2 miles NWly from Helvetia.
66. Gadsden - 1500' x 600'. About 2 miles NWly from Helvetia.
67. Pasco - 1500' x 600'. About 2 miles NWly from Helvetia.
68. Seminole - 1500' x 600'. About 2 miles NW from Helvetia.
69. Marion - 1500' x 600'. About 2 miles NWly from Helvetia.
70. Lee - 1500' x 600'. 9 miles NWly from Helvatia.
71. Palm - 1500' x 600'. About 1 mile westerly from Helvetia.
72. Union - 1500' x 600'. About 2 miles NW from Helvetia.
73. Hendry - 1500' x 600'. About 2 miles NWly from Helvetia.
74. Wakulla - 1500' x 600'. About 2 miles in a westerly direction from Helvetia.
75. DeSoto - 1500' x 600'. About 9 miles ~~westerly~~ northerly from Helvetia.
76. Esplande - 1500' x 600'. About 4 miles northerly from Helvetia.
77. Cord - 1500' x 600'. About 3-1/2/miles northerly from Helvetia.
78. Franklin - 1500' x 600'. About 4-1/2 miles in a northerly direction from Helvetia.
79. Ford - 1500' x 600'. About 4-1/2 miles in a northerly direction from Helvetia.
80. Fiat - 1500' x 600'. About 4-1/2 miles in a northerly direction from Helvetia.
81. Buick - 1500' x 600'. About 3 miles northerly from Helvetia.
82. Bantam - 1500' x 600. about 3 miles northerly from Helvetia.
83. Carter Car - 1500' x 600'/ About 3-1/2 miles northerly from Helvetia.
84. Cunningham - 1500' x 600'. About 3-1/2 miles northerly from Helvetia.
85. Durant - 1500' x 600'. About 4 miles in northerly direction from Helvetia.
86. Dodge - 1500' x 600'. About 4 miles in northerly direction from Helvetia.
87. Electric - 1500' x 600' About 4-1/2 miles northerly from Helvetia.
88. Everant - 1500' x 600'. About 4-1/2 miles northerly from Helvetia.
89. Austin - 1500' x 600'. About 10 miles northerly from Helvetia.
90. Auburn - 1500' x 600'x. About 2-1/2 miles NWly from Helvetia.



49. Rosemont #15 - 1500' x 600'. About 1-1/2 mile in a southeasterly direction from Rosemont.
50. Rosemont #16 - 1500' x 600'. About 1-3/4 mile in a SE direction from Rosemont.
51. Rosemont #12 - 1500' x 600'. About 1-1/2 mile in a SEly direction from Rosemont.
52. Rosemont #17 - 1500' x 600'. About 1-1/2 mile in a SE direction from Rosemont.
- 53 - Rosemont #18 - 1500' x 600'. About 1-3/4 mile in a SE direction from Rosemont.
54. - Rosemont #13 - 1500' x 600'. About 1-3/4 mile in a SE direction from Rosemont.
55. - Rosemont #19 - 1500' x 600'. About 3 miles in a SEly direction from Rosemont.
56. - Rosemont #20 - 1500' x 600'. About 3 miles NEly from Rosemont.
57. - Rosemont #21 - 1500' x 600'. about 1 mile in SEly direction from Rosemont.
58. - Rosemont #22 - 1500/x600' About 3 miles SEly from Rosemont.
59. - Waltham aka Walthum - 930' long. 465' in SEly direction and 465' in NWly direction from center of ~~discovery~~ discovery shaft. together with ~~255' x~~ 225' in width on & surface ground on each side of center of said claim. Claim is situated in Helvetia Mining District and lies immediately W of and adjoins the Elgin patented mining claim. Lies S. of and adjoins the Monitor, lies NEly of and adjoins the Boston and lies NWly of and adjoins the Telephone, all patented claims. The NWly end line of this claim adjoins the SEly end line of said Monitor claim. The NEly side line of this claim adjoins the SWly side line of Elgin. The surface boundaries are as follows: Beg. at a stone mon. at a point in the SEly end line of said Monitor claim in a NWly direction 465' from the discovery shaft being in the center of the NWly end line of this claim; thence SWly along SEly end line of the Monitor claim about 250' to a point to the NEly side line of the Boston claim; thence SEly about 930' along the NEly side line of the Boston ~~claim~~ claim to a point in the westerly end line of the Telephone claim; thence NEly and parallel with the NWly end line of this claim 250' to a point which is the center of the NEly end line of this claim; thence NEly and parallel with the NWly end line of this claim, a ~~difference of about~~ distance of about 250' to a point in the SWly side line of the Elgin claim - this point is the SEly cor. of this claim; thence along ~~with~~ the SWly side line of the Elgin claim about 930' to a point in the SEly end line of the Monitor claim - this point is the SEly corner of this claim; thence SWly along the SEly end line of the Monitor claim to the point of beginning.
60. Polk - 1500' x 600'. About 1 mile westerly from Helvetia.
- 61 - Orange - 1500' x 600'. About 1-1/2 mile in a northerly direction from Helvetia.
62. Volusia - 1500' x 600'. About 1-1/2 mile westerly from Helvetia.
63. Escambia - 1500' x 600'. About 1-1/2 mile in a NWly direction from Helvetia.

- 7 ✓ 91. Jim - 1500' x 600'. About 1-1/2 miles easterly from Helvetia. Surface boundaries as follows: Bounded on the north by King and Exile and on the south by <sup>8500'</sup>Dog Top and <sup>East</sup>East by ~~XXXXX~~ Malachite - all claims named being patented.
- ✓ 92. Ben - 1500' x 600'. 1-1/2 miles easterly from Helvetia. Bounded on the NW by ADT and Indian Club, on the east by the King and south by the King - all claims being patented.
- ✓ 93. Bob - 1500' x 600'. 1-1/2 miles easterly from Helvetia. Bounded on the west by Omega, and Isle Royale; east by Vulture and Exile, on the south by Eclipse Copper - all claims are patented.
- ✓ 94. Pete - 1500' x 600'. One mile easterly from Helvetia. Bounded on the west by the Pilot, on the <sup>west</sup>east by the AOT and King and on the east by Arcoa. Claim is also parallel to ADT. All claims named are patented.
- ✓ 95. John - 1500' x 600'. About 1-1/2 miles easterly from Helvetia. Bounded on the east by the Cupid, on the south by the Amole, on the west by the Bonnie Blue - all claims named are patented.
- ✓ 96. Joe - 1500' x 600'. 1-1/2 miles easterly from Helvetia. Bounded on the south by Bonnie Blue, on the west by Arcola. All claims named are patented.
97. Sam - 1500' x 600'. Two miles easterly from Helvetia.
98. Fred. - 1500 x 600. 2-1/2 miles easterly from Helvetia.
99. Art - 1500' x 600'. 2-1/2 miles easterly from Helvetia.
100. Al - 1500' x 600'. 2 miles easterly from Helvetia.
- 101 - Bert - 1500' x 600'. 2-1/2 miles easterly from Helvetia.

The following are all unpatented millsites situated in the Helvetia Mining District, Pima County, Arizona

102. Ward Mill Site - About 1-1/2 miles westerly from Helvetia, surface boundaries being as follows: Beg. at a point in a southerly direction 50' from the location monument being the center of the S. end line; thence westerly 162.5 feet to a mon. being the SW cor. of said claim; thence northerly 670' to a mon. being NW cor. of said claim; thence easterly 825' to a mon. being NE cor. of said claim; thence southerly 670' to a mon. being the SE cor. of said claim; thence westerly 862.5' to the point of beginning.
- ✓ 103. Mohawk Silver Mill Site - 775' x 50' one mile in westerly direction from Helvetia, surface boundaries as follows: Beginning at a point in a southerly direction 50' from the location monument being in the center of the south end line of said claim; thence westerly 162.5' to a mon. being the SW cor. of said claim; thence northerly 775' to a mon. being the NW cor. of said claim and that point being on the west side line of the Boston patented claim; thence SEly on west side line of Boston claim to a mon. being the NE corner of claim;
- 314, 750

southerly 331.1' to a mon. at the SE cor. of said claim; thence westerly 162.5' to a mon. being the point of beginning.

104. Lafayette Mill Site - 670' x 162.5' on each side of the center boundary. About one mile westerly from Helvetia.
- 105 - Erie Mill Site - 670' x 162.5' on each side of the center boundary. About one mile westerly from Helvetia.
106. Duprite Mill Site - 670' x 162.5' on each side of the center boundary. About 1-1/2 miles westerly from Helvetia.
107. Central Mill Site - 670' x 162.5' on each side of the center monument. About one mile westerly from Helvetia.
108. Black Mill Site - 670' x 162.5' on each side of the center monument. About 1-1/2 mile westerly from Helvetia.
109. Baltimore Mill Site 670' x 162.5' on each side of the center monument. About 1-1/2 mile westerly from Helvetia.
110. Antelope Mill Site - 670' x 162.5' on each side of the center monument. About 1-1/2 miles westerly from Helvetia.
111. Altamont Mill Site - <sup>Same</sup> ~~No~~ dimensions. About two miles westerly from Helvetia.
112. Alta Copper Mill Site - <sup>Same</sup> ~~No~~ dimensions. About 1-1/2 mile westerly from Helvetia.
113. Arcola Mill Site - Same dimensions. About 1-1/2 mile westerly from Helvetia.
114. Bonnie Blue Mill Site - Same demensions. About 1-1/2 mile westerly from Helvetia.
115. Blue Point Mill Site. - Same dimensions. About 1-1/2 mile westerly from Helvetia.
116. Cushing Mill Site - Same dimensions. About 1-1/2 mile westerly from Helvetia.
117. Cuba Mill Site - Same demensions. About one mile westerly from Helvetia.
118. Potomac Mill Site aka Patomac - Same dimensions. One mile westerly from Helvetia.
119. Dan Webster - Same dimensions. About one mile westerly from Helvetia.
- 120 - Daylight Mill Site - Same dimensions. About one mile westerly from Helvetia.
- 121 - Exile Mill Site - Same dimensions. About one mile westerly from Helvetia.
- 122 - Falls Mill Site - Same dimensions. About one mile westerly from Helvetia.



123. Peach Mill Site - Same dimensions. About one mile westerly from Helvetia.
124. Waltham Mill Site - Same dimensions. About one mile westerly from Helvetia.
125. Mohawk Mill Site - Same dimensions. About one mile westerly from Helvetia.



That certain patented lode mining claim situated in the Helvetia Mining District, Pima County, State of Arizona, known as the SUNSETTE, <sup>sheet 362</sup> designated by Surveyor General as Lot No. 2061, and particularly described in the United States patent therefor, which is recorded in Book No. 26, Deeds of Mines, at page 590, in the office of the County Recorder of Pima County, State of Arizona.

Also, those certain unpatented lode mining claims situated in the Helvetia Mining District, Pima County, State of Arizona, of which the names, together with the numbers of books and pages of Records of Mines in the office of said County Recorder of Pima County, Arizona, where their location notices are recorded, are as follows:

<u>NAME</u>	<u>BOOK</u>	<u>PAGE</u>
✓ Ruby	287	256
✓ Irish	287	259
✓ Axe	287	258
✓ Adolph Lewisoohn	710	346
✓ Rosemont	710	347
✓ Albert Steinfeld	710	348
✓ Hugh Young	712	108
✓ Fred Bennett	712	107
✓ Ethel	712	109
✓ Albert	712	110
✓ Rosemont #23 11	908	497
✓ Rosemont #24 12	908	498
✓ Rosemont #4 13	908	499
✓ Rosemont #20 14	908	500
✓ Rosemont #2 15	908	501
✓ Rosemont #25 16	908	502
✓ Rosemont #3 17	908	503
✓ Rosemont #1 18	908	504
✓ Flat Top 19	913	600
✓ Round Top 20	914	1
✓ Alachua 21	916	549
✓ Baker 22	916	550
✓ Dade 23	916	551
✓ Eustis 24	916	552
✓ Flagler 25	916	553
✓ Glades 26	916	554
✓ Hillsborough 27	916	555
✓ Indian River 28	916	556
✓ Jackson 29	916	557
✓ Kissimmee 30	916	558

LEWISOHN GROUP

<u>NAME</u>	<u>BOOK</u>	<u>PAGE</u>
✓Liberty 31	916	559
✓Manatee 32	916	560
✓Nassau 33	916	561
✓Okeechobee 34	916	562
✓Putnam 35	916	563
✓Duzy 36	932	231
✓Suzy 37	934	536
✓Rosemont 38	936	418
✓Adolph Lewisohn 39	936	419
✓Rosemont #11 40	936	420
✓Rosemont #7 41	936	421
✓Hugh Young 42	936	422
✓Rosemont #8 43	936	423
✓Rosemont #9 44	936	424
✓Fred Bennett 45	936	425
✓Rx 46	936	426
✓Albert Steinfeld 47	936	427
✓Rosemont #14 48	936	428
✓Rosemont #15 49	936	429
✓Rosemont #16 50	936	430
✓Rosemont #12 51	936	431
✓Rosemont #17 52	936	432
✓Rosemont #18 53	936	433
✓Rosemont #13 54	936	434
✓Rosemont #19 55	964	200
✓Rosemont #20 56	964	201
✓Rosemont #21 57	964	202
✓Rosemont #22 58	964	203
✓Waltham aka Walthum 59	942	87
✓Polk 60	948	23
✓Orange 61	948	24
✓Volusia 62	948	25
✓Escambia 63	948	26
✓Leon 64	948	27
✓Brevard 65	948	28
✓Gadsden 66	948	29
✓Pasco 67	948	30
✓Seminole 68	948	31
✓Marion 69	948	32
✓Lee 70	948	33
✓Palm 71	948	34
✓Union 72	948	469
✓Hendry 73	948	470
✓Wakulla 74	948	471
✓DeSoto 75	979	349
✓Esplande 76	979	350
✓Cord 77	979	351
✓Franklin 78	979	352
✓Ford 79	979	353
✓Fiat 80	979	354
✓Buick 81	979	355
✓Bantam 82	979	356
✓Carter Car 83	979	357
✓Cunningham 84	979	358
✓Durant 85	979	359
✓Dodge 86	979	360
✓Electric 87	979	361
✓Everant 88	979	362

LEWISOHN GROUP

<u>NAME</u>	<u>BOOK</u>	<u>PAGE</u>
✓Austin 89	979	363
✓Auburn 90	979	364
✓Jim 91	995	391
✓Ben 92	995	392
✓Bob 93	995	393
✓Pete 94	995	394
✓John 95	995	395
✓Joe 96	995	396
✓Sam 97	1009	439
✓Fred 98	1009	440
✓Art 99	1009	441
✓Al 100	1009	442
✓Bert 101	1009	443

Also, those certain unpatented mill sites situated in the Helvetia Mining District, Pima County, State of Arizona, of which the names, together with the numbers of Books and pages of Records of Mines in the office of said County Recorder of Pima County, Arizona, where their location notices are recorded, are as follows:

<u>NAME</u>	<u>BOOK</u>	<u>PAGE</u>
✓Ward Mill Site 102	1044	505
✓Mohawk Silver Mill Site 103	1044	506
✓LaFayette Mill Site 104	1044	507
✓Erie Mill Site 105	1044	508
✓Cuprite Mill Site 106	1044	509
✓Central Mill Site 107	1044	510
✓Black Mill Site 108	1044	511
✓Baltimore Mill Site 109	1044	512
✓Antelope Mill Site 110	1044	513
✓Altamont Mill Site 111	1044	514
✓Alta Copper Mill Site 112	1044	515
✓Arcola Mill Site 113	1044	516
✓Bonnie Blue Mill Site 114	1044	517
✓Blue Point Mill Site 115	1044	518
✓Cushing Mill Site 116	1044	519
✓Cuba Mill Site 117	1044	520
✓Potomac Mill Site aka Patomac 118	1044	521
✓Dan Webster 119	1044	522
✓Daylight Mill Site 120	1044	523
✓Exile Mill Site 121	1044	524
✓Falls Mill Site 122	1044	525
✓Peach Mill Site 123	1044	526
✓Waltham Mill Site 124	1044	527
Mohawk Mill Site 125	1044	528

EXHIBIT "A"

REPLY

October 26, 1970

JOE F. WALTON  
PRESIDENT

MEMORANDUM

TO: KELSEY L. BOLTZ

FROM: JOE F. WALTON

Re: Leisure Planning Corporation - Lewisohn Properties

It is impossible for the Trustee and the Bankruptcy Court to give a Warranty Deed as to liens or encumbrances except that the Court's Order will warrant the properties to be free and clear of any lien or encumbrance arising out of any claim filed in connection with the bankruptcy proceeding.

If there are any tax liens or other encumbrances of record against the Lewisohn properties we will have to determine what they are and specifically reserve an amount to cover such liens so that we can require that the same be paid from a separate check given to the Trustee for such purpose or that we take the property subject to such encumbrance and will, therefore, have the obligation to clear the same ourselves in order to effect our Chase Manhattan loan.

Joe F. Walton

Note: Copy of this Memo to PCF with instruction that a mortgagee's title search be obtained immediately so that we can know the condition of the property upon executing the formal offer being forwarded by the Trustee in Bankruptcy.

JFW



1282 572

IN THE SUPERIOR COURT OF THE STATE OF ARIZONA

IN AND FOR THE COUNTY OF PIMA

FILED  
1958 JUN 9 AM 10  
GRACE GIBSON O'NEAL  
CLERK SUPERIOR COURT  
No. 22870 BY D. Thompson  
DEPUTY

IN THE MATTER OF THE ESTATE OF

DEWEY F. FORBES,  
Deceased.

Division No. \_\_\_\_\_

DECREE OF DISTRIBUTION OF ESTATE

Catherine H. Forbes, Administratrix with Will Annexed  
of the Estate of Dewey F. Forbes.

deceased, having on the 26th day of May, 19 58,  
filed in this Court her petition, setting forth among  
other matters that all accounts have been finally  
settled, and that said estate is in a condition to be closed, and  
that a portion of said estate remains to be divided among the legatees  
and devisees of said deceased; said matters coming on regularly  
to be heard this 9th day of June, 19 58, the Court  
proceeded to the hearing of said petition; and it appearing to the  
satisfaction of the Court that the residue of said estate, consisting  
of the property hereinafter particularly described, is now ready  
for distribution, and that said estate is now in a condition to be  
closed; and it duly appearing to said Court that since, the rendition  
of her said final account sum of no dollars  
has come into the hands of said Administratrix  
and the sum of no dollars has been expended  
by said Administratrix as necessary expenses  
of administration; and that the estimated expenses of closing said  
estate will amount to the sum of no dollars.

That the said Dewey F. Forbes  
died testate, leaving his surviving  
ELIZABETH FORBES, his widow. That all of said property of deceased is  
separate property and by the terms of his will, CATHERINE H. FORBES,  
mother of deceased is  
entitled to all of the residue of said estate and all and  
singular the law and the premises being by the Court seen, heard,  
understood and fully considered; whereupon.

IT IS HEREBY ADJUDGED AND DECREED, that all the acts and pro-  
ceedings of said Administratrix as  
appearing upon the records hereof, and the same are hereby approved  
and confirmed, and the residue of said estate of Dewey F.  
Forbes deceased, hereinafter particularly described, and now  
remaining in the hands of said Administratrix

any other property not known or discovered, which may belong to said estate, or in which the said estate may have any interest, be the same is hereby distributed as follows, to-wit: \_\_\_\_\_

To Catherine M. Forbes, - All of residue of said estate

The following is a particular description of the said residue of the said estate referred to in this decree, and of which distribution is ordered, adjudged and decreed, as aforesaid, to-wit:  
TO CATHERINE M. FORBES:

Cash (located since filing Inventory and Appraisement), . . . \$33.38  
same being located in Arizona Savings & Loan Association.

Mining Claims:

Unpatented (Patented)  
Irish (Unpatented)  
Axe (Unpatented)  
Ruby (Unpatented).

AND IT IS FURTHER ORDERED AND DECREED, that the said \_\_\_\_\_  
Administratrix, \_\_\_\_\_ upon payment and delivery of said residue  
hereinbefore ordered, and upon filing due and proper vouchers and  
receipts therefor in this Court, be fully and finally discharged from  
her trust as such Administratrix, and that her  
shall thereupon and thenceforth be discharged from all  
liabilities for her future acts.

Done in open Court this 9th day of JUNE, 19 58.

Robert S. Tullar  
Judge of the Superior Court.



1232 574

STATE OF ARIZONA, )  
 ) ss.  
COUNTY OF PINA. )

I, GRAYCE GIBSON O'NEILL, CLERK OF THE SUPERIOR COURT  
OF THE STATE OF ARIZONA, IN AND FOR THE COUNTY OF PINA, DO  
HEREBY CERTIFY THAT I HAVE COMPARED THE FOREGOING COPY OF  
DECREE OF DISTRIBUTION OF ESTATE

IN CASE NO. 22870, ENTITLED In the Matter  
Of the Estate Of DENVER F. FORBES, Deceased

WITH THE ORIGINAL RECORD OF THE SAME REMAINING IN THIS  
OFFICE, AND THAT THE SAME IS A TRUE AND CORRECT TRANSCRIPT  
THEREFROM.

WITNESS MY HAND AND THE SEAL OF SAID COURT AFFIXED  
THIS 9th DAY OF June 1958.

GRAYCE GIBSON O'NEILL  
CLERK

BY Doris M. Sullinger  
DEPUTY CLERK

39931

DEED

For 325

INDEXED	FILED	COPIES	MAILED
Ed			188

State of Arizona }  
County of Pima }

I hereby certify that the within instrument  
was filed for record at request

of TANNENBAUM & TANNENBAUM

1958 JUN 27 PM 3:03 M.

Book 1282

Page 572-574

Witness my hand and Official Seal  
day and year above written

ANNA SULLINGER, County Recorder

Doris M. Sullinger  
Deputy



November 20, 1970

The title of the 101 unpatented claims and 1 patented claim and 24 millsite claims rests with Lewisohn Copper Corp., (See attached list for how held)

Chattles, Conditionals Sales etc, 1965 to date (including UCC) (Mortgagors)  
Federal Tax Leins to date from 53  
State Tax Leins to date ( one filed in 1961 but released 8-2-61)  
Employment Security Commission to date  
Industrial Commission to date  
Judgement Leins to date from 1955

None found to be in force

There was an Agreement with American Exploration and Mining Company on part of Lewisohn group at 1012 p 114-116, added to previous of 2-15-56, doc.974, p. 176 on Rosemont Group.(group #1 on attached list) *no release found*  
Assessment for the years 64-65 thru 69-70 with spot check was filed by Anaconda with reference to the fact that claims were held by agreement with Banner and assessment was by terms. (1969-1970 docket 3681, p. 109 on one contiguous group.)

[illegible]

Lewisohn to Banner docket 1844, ps. 156-164 (1849,p215-217)

Lewisohn Notice of non liability 1799, p 175-178

Banner to Anaconda 2065 beginning page 220, re Lewisohn group 246-248

March 1, 1963

?2246, p243-245

CONTRACT OF SALE AND PURCHASE

THIS AGREEMENT, made and entered into as of the 1st day of April, 1961 by and between LEWISOHN COPPER CORP., a Delaware corporation qualified to transact business in Pima County, State of Arizona, hereinafter called "Seller", and BANNER MINING COMPANY, a Nevada corporation qualified to transact business in Pima County, State of Arizona, hereinafter called "Buyer".

## W I T N E S S E T H:

1. REPRESENTATIONS: Seller represents to Buyer:

(a) Corporate Status: Seller is a corporation organized and existing under and by virtue of the laws of the State of Delaware and is duly qualified to transact business in Pima County, State of Arizona.

(b) Authorization and Approval: Seller agrees to call a meeting of its stockholders to secure the authorization and approval of said stockholders of the execution by Seller of this agreement on the terms and conditions provided herein.

(c) Seller is the owner of one (1) patented lode mining claim, and one hundred one (101) unpatented lode mining claims, and twenty-four (24) unpatented mill sites situated in the Helvetia Mining District, Pima County, Arizona, which claims are more particularly described under the heading, "Lewisohn Group", in Exhibit "A" attached hereto and made a part hereof; and is the owner and holder of that certain Lease and Option Agreement made and entered into as of the 11th day of October, 1955, by and between Frederick Lewisohn, Southern Arizona Bank and Trust Company, as Administrator with the Will Annexed of the Estate of Leonard Lewisohn, Deceased, and David M. Heyman, John G. Greenburgh, Eustace Seligman and Alfred

**NOTICE OF NON-LIABILITY FOR LABOR  
AND MATERIALS FURNISHED**

NOTICE IS HEREBY GIVEN to all persons that LEWISOHN COPPER CORP., a Delaware corporation, is the owner of that certain patented lode mining claim and those certain unpatented mining claims and mill sites situate in the Helvetia Mining District, Pima County, Arizona, particularly described in Exhibit "A" attached hereto and made a part hereof.

That said mine, mining claims and mill sites will be placed in possession of and be worked and operated by Banner Mining Company, a Nevada corporation, on and after the 1st day of June, 1961, pursuant to a Contract of Sale and Purchase made and executed by the above named owner in favor of said Banner Mining Company dated as of the 1st day of April, 1961. Said Contract of Sale and Purchase may be in force to and including March 1, 1966.

The aforesaid owner is not working or operating said mine or mining claims, or any part thereof, and do not intend to work or operate said mine or mining claims, or any part thereof, or purchase supplies or materials therefor during the life of said contract with said Banner Mining Company, and hereby give notice that said owner will not be liable for labor, materials or merchandise furnished to or performed in the operation and development of said mine or mining claims, and that said mine or mining claims will not be subject to a lien therefor, and will not be subject to the lien provided for in Section 33-989, Arizona Revised Statutes.

IN WITNESS WHEREOF, the said owner has caused this notice to be executed by its Secretary this 24 day of June, 1961.

LEWISOHN COPPER CORP.

By [Signature]  
Its Secretary

STATE OF ARIZONA  
COUNTY OF PIMA } ss.

On this, the 24 day of June, 1961, before me, the undersigned officer, personally appeared ROYD M. MORSE, who acknowledged himself to be the Secretary of LEWISOHN COPPER CORP., and acknowledged that he, as such Secretary, being authorized so to do, executed the foregoing instrument for the purposes therein contained by signing the name of the corporation by himself as Secretary.

IN WITNESS WHEREOF, I hereunto set my hand and official seal.

My Commission Expires:

Nov. 7, 1964

[Signature]  
Notary Public



100 176  
LEWISOHN GROUP

That certain patented lode mining claims situated in the Helvetia Mining District, Pima County, State of Arizona, known as the SUNSETTE, particularly described in the United States patent therefor, which is recorded in Book No. 26, Deeds of Mines, at page 590, in the office of the County Recorder of Pima County, State of Arizona.

Also, those certain unpatented lode mining claims situated in the Helvetia Mining District, Pima County, State of Arizona, of which the names, together with the numbers of Books and pages of Records of Mines in the office of said County Recorder of Pima County, Arizona, where their location notices are recorded, are as follows:

<u>NAME</u>	<u>BOOK</u>	<u>PAGE</u>
Ruby	287	256
Irish	287	259
Axe	287	258
Adolph Lewisohn	710	346
Rosemont	710	347
Albert Steinfeld	710	348
Hugh Young	712	108
Fred Bennett	712	107
Ethel	712	109
Albert	712	110
Rosemont #23	908	497
Rosemont #24	908	498
Rosemont #4	908	499
Rosemont #20	908	500
Rosemont #2	908	501
Rosemont #25	908	502
Rosemont #3	908	503
Rosemont #1	908	504
Flat Top	913	600
Round Top	914	1
Alachua	916	549
Baker	916	550
Dade	916	551
Eustis	916	552
Flagler	916	553
Glades	916	554
Hillsborough	916	555
Indian River	916	556
Jackson	916	557
Kissimmee	916	558
Liberty	916	559

<u>NAME</u>	<u>BOOK</u>	<u>PAGE</u>
Manatee	916	560
Nassau	916	561
Okeechobee	916	562
Putnam	916	563
Duzy	932	231
Suzy	934	536
Rosemont	936	418
Adolph Lewisohn	936	419
Rosemont #11	936	420
Rosemont #7	936	421
Hugh Young	936	422
Rosemont #8	936	423
Rosemont #9	936	424
Fred Bennett	936	425
Rx	936	426
Albert Steinfeld	936	427
Rosemont #14	936	428
Rosemont #15	936	429
Rosemont #16	936	430
Rosemont #12	936	431
Rosemont #17	936	432
Rosemont #18	936	433
Rosemont #13	936	434
Rosemont #19	964	200
Rosemont #20	964	201
Rosemont #21	964	202
Rosemont #22	964	203
Waltham aka Walthum	942	87
Polk	948	23
Orange	948	24
Volusia	948	25
Escambia	948	26
Leon	948	27
Brevard	948	28
Gadsden	948	29
Pasco	948	30
Seminole	948	31
Marion	948	32
Lee	948	33
Palm	948	34
Union	948	469
Hendry	948	470
Wakulla	948	471
DeSoto	979	349
Esplande	979	350
Cord	979	351
Franklin	979	352
Ford	979	353
Fiat	979	354
Buick	979	355
Bantam	979	356
Carter Car	979	357
Cunningham	979	358
Durant	979	359
Dodge	979	360



NAME	BOOK	PAGE
Electric	979	361
Everant	979	362
Austin	979	363
Auburn	979	364
Jim	995	391
Ben	995	392
Bob	995	393
Pete	995	394
John	995	395
Joe	995	396
Sam	1009	439
Fred	1009	440
Art	1009	441
Al	1009	442
Bert	1009	443

Also, those certain unpatented millsites situated in the Helvetia Mining District, Pima County, State of Arizona, of which the names, together with the numbers of Books and pages of Records of Mines in the office of said County Recorder of Pima County, Arizona, where their location notices are recorded, are as follows:

NAME	BOOK	PAGE
Ward Mill Site	1044	505
Mohawk Silver Mill Site	1044	506
LaFayette Mill Site	1044	507
Erie Mill Site	1044	508
Cuprite Mill Site	1044	509
Central Mill Site	1044	510
Black Mill Site	1044	511
Baltimore Mill Site	1044	512
Antelope Mill Site	1044	513
Altamont Mill Site	1044	514
Alta Copper Mill Site	1044	515
Arcola Mill Site	1044	516
Bonnie Blue Mill Site	1044	517
Blue Point Mill Site	1044	518
Cushing Mill Site	1044	519
Cuba Mill Site	1044	520
Patomac Mill Site aka Patomac	1044	521
Dan Webster Mill Site	1044	522
Daylight Mill Site	1044	523
Exile Mill Site	1044	524
Falls Mill Site	1044	525
Peach Mill Site	1044	526
Waltham Mill Site	1044	527
Mohawk Mill Site	1044	528

MISCELLANEOUS

STATE OF ARIZONA

COUNTY OF PIMA

Witness my hand and Official Seal:

I hereby certify that the within No. 44035  
instrument was filed for record  
in Pima County, State of Arizona Book 1799 Page 178

ANNA SULLINGER,  
County Recorder

Date 1961 JUL 5 AM 10:34

Received of: Boyd M. Thorne

By Deputy

Fee: \$1.00

Indexed	Paged	Filed

EXHIBIT "A"



1018 564

STATE OF ARIZONA

COUNTY OF PIMA

Witness my hand and seal

Index	Page	Record
1018	564	1018

## Mining Deed

THIS INDENTURE, Made the 2 day of August  
in the year of our Lord One Thousand Nine Hundred and Fifty-six, between  
FELIZ RUELAS, P. R. RUELAS, and CLEOFE RUELAS,

the parties of the first part, and LEWISOHN COPPER CORP., a Delaware  
corporation, qualified and doing business in the State of Arizona,

the party of the second part,

WITNESSETH: That the said parties of the first part, for and in consideration of the  
sum of TEN and no/100 -----DOLLARS,  
~~at the State of Arizona~~ to them in  
hand paid by the said party of the second part, the receipt whereof is hereby acknowl-  
edged, have granted, bargained, sold, remised, released and forever quitclaimed, and by  
these presents do grant, bargain, sell, remise, release and forever quitclaim unto the said  
party of the second part, and to its heirs and assigns that certain unpatented  
mining claim, Location Notice of which is of record in the Office of the County  
Recorder of Pima County, Arizona, in Book GG of Location Notices, at page  
157 thereof, said claim being located in Helvetia Mining District, Pima County,  
Arizona, and being all of the area bounded by the Monitor, Elgin, Sunsetting,  
Telephone and Boston patented mining claims. A re-location of said mining  
claims by said Feliz Ruelas was made under Location Notice filed in the Office  
of the Pima County Recorder, State of Arizona, in Book        at page        and  
recorded on       , 1956, to which reference is hereby made only  
for further description of the said property, it being intended by the parties  
hereto that any and all right, title and interest to said mining claim which they  
now have or ever have had claim or right to of any nature whatsoever is being  
conveyed to second party hereby.



Together with all the dips, spurs, and angles, and also all the metals, ores, gold and silver-bearing quartz, rock and earth therein; and all the rights, privileges and franchises thereto incident, appendant and appurtenant, or therewith usually had and enjoyed; and also, all and singular the tenements, hereditaments and appurtenances thereto belonging, or otherwise appertaining, and the rents, issues and profits thereof, and also all the estate, right, title, interest, property, possession, claim and demand whatsoever, as well in law as in equity, of the said parties... of the first part, of, in or to the said premises and every part and parcel thereto with the appurtenances.



1918 2256

TO HAVE AND TO HOLD, all and singular, the said premises, together with the appurtenances and privileges thereunto incident, unto the said party of the second part, its heirs and assigns forever:

Parties of the first part hereby covenant and warrant that between them they are the owners of said unpatented mining claim free and clear of any encumbrance of any nature or description and that said mining claim is a valid and existing mining location under applicable Arizona and United States statutes.

IN WITNESS WHEREOF, the said parties of the first part have hereunto set their hands the day and year first above written.

*Feliz Ruelas*  
*P. R. Ruelas*  
*Cleofe Ruelas*

STATE OF ARIZONA  
County of PIMA ss.  
On this the 2nd day of August, 1956, before me  
Beth H. Bowers, the undersigned  
Notary Public, personally appeared FELIZ RUELAS, P. R. RUELAS, AND

~~XXXXXXXXXXXX~~, known to me to be the  
persons whose names are subscribed to the foregoing instrument, and acknowledged to  
me that they executed the same for the purposes therein contained.

IN WITNESS WHEREOF, I hereunto set my hand and official seal.

My Commission Expires:

Oct. 15, 1958.

*Beth H. Bowers*  
Notary Public

STATE OF ARIZONA  
County of PIMA ss.  
On this the 3rd day of August, 1956, before me  
CARLOS C. ROBLES, the undersigned  
Notary Public, personally appeared CLEOFE RUELAS

person whose name is subscribed to the foregoing instrument, and acknowledged to  
me that she executed the same for the purposes therein contained.

IN WITNESS WHEREOF, I hereunto set my hand and official seal.

My Commission Expires:

MARCH 15, 1958.

*Carlos C. Robles*  
Notary Public



QUITCLAIM MINING DEED

THIS INDENTURE, made this 31<sup>st</sup> day of January, 1962, by and between MATILDE RUELAS (sometimes known as Tilly Ruelas), child of Feliz Ruelas and Cleofe Ruelas, hereinafter called "Grantor", and LEWISOHN COPPER CORPORATION, a Delaware corporation licensed to transact business in Arizona, hereinafter called "Grantee",

W I T N E S S E T H:

Grantor, for and in consideration of Ten Dollars (\$10.00) and other good and valuable consideration to her in hand paid by Grantee, the receipt of which is hereby acknowledged, hereby releases and quitclaims unto Grantee all of Grantor's right, title and interest in and to the WALTHAM unpatented mining claim (sometimes called "Waltham"), located in the Helvetia Mining District, Pima County, State of Arizona, originally located by location notice recorded in the Office of the County Recorder of Pima County, Arizona, in CG of Records of Mines at page 157 thereof, and relocated under the same name by Feliz Ruelas by a location notice recorded in the Office of the County Recorder of Pima County, Arizona, in Docket 942 at page 87 thereof; TOGETHER WITH all dips, spurs and angles, and all veins, lodes and ledges and all minerals and mineral-bearing earth and rock therein, all extralateral rights and all hereditaments and appurtenances thereunto belonging or in anywise appertaining, and the rents, issues and profits thereof.

TO HAVE AND TO HOLD said mining claim and all rights appurtenant thereto unto Grantee, its successors and assigns forever.

IN WITNESS WHEREOF, Grantor has executed this Quitclaim

BOOK 1891 PAGE 494

Mining Deed as of the day and year first above written.

NO DOCUMENTARY STAMPS REQUIRED  
CONSIDERATION DOES NOT EXCEED \$100.00

Matilde Ruelas  
Matilde Ruelas

Grantor

STATE OF ARIZONA

County of Pima

ss.

On this the 31<sup>st</sup> day of January, 1962, before me, the undersigned Notary Public, personally appeared MATILDE RUELAS (sometimes known as Tilly Ruelas), known to me (or satisfactorily proven) to be the person whose name is subscribed to the foregoing instrument, and acknowledged that she executed the same for the purposes therein contained.

IN WITNESS WHEREOF, I hereunto set my hand and official seal.

Adrian B. B. B.  
Notary Public

My Commission Expires:

March 10, 1963

9386 Mail

MINING DEED

Fee \$ 8.50

1052 FEB 9 AM 9:11

Book 1891

Page 493-494

Witness my hand and official seal

Alma S. Sullivan, County Recorder

Alma S. Sullivan  
Deputy

of Banner Mining Co.

P.O. Box 5605



1801  
44

Lewisohn Cu Corp from Richard E Chilson  
Mining Deed to LCC  
located by Chilson for Lewisohn

I  
2nd revised

6-30-61

7-10-61

3  
revised

Round Top  
Flat Top  
Dazzy

Mining Deed  
984 115  
May 11, 1956

11-July 56  
12 July 56

1008 533

Mining Deed

II

1 on revised

Quit Claim & Disclaimer of lease & Option  
& Mining Claims Alice E Chilson  
doc 959 p 15



2095

347

2063

222

1329

p388

A

Lewisohn Cu Corp from Catherine M Forbes  
16-Oct '58 Mining Deed  
Sunset  
Oct 23-58

1329

390

B

Lewisohn Cu Corp from Catherine M Forbes  
a widow

Irish  
Axe  
Ruby

10-16-58

10-23-58

Catherine M Forbes gets all  
mother test of Denver F Forbes  
6-9-58 1282 572  
of husband Albert 570

names by name

from  
Denver

Sunset  
Irish  
Axe  
Ruby

from  
Albert } Tip Top Group

Sunset 1907 2061 Bk 26 p 590

Peter Lauterback & John Murphy  
Murphy leave 1/2 to Lauterback 26 p. 592  
Peter Lauterback had full by above B26, 592

Catherine Forbes from Denver Forbes 1283, 572

Denver

Lauterback Peter et al to Joseph M Muhaim  
1920 30 - 24

31 158

25	00	374	—	64	65
27	B1	209	—	65	66
29	60	160	—	66	66
<del>27</del>	<del>51</del>	<del>209</del>			
32	20	133		67	68
34	59	107	—	68	69
36	81	109	—	69	70

Anaconda  
Assessment  
spot check



T185 R16E  
Secs 19, 20, 30

LEWISOHN GROUP

T185, R 15E  
Secs: 13, 14, 15, 22, 23, 24, 25, 36

That certain patented lode mining claim situated in the Helvetia Mining District, Pima County, State of Arizona, known as the SUNSETTE, designated by Surveyor General as Lot No. 2061, and particularly described in the United States patent therefor, which is recorded in Book No. 26, Deeds of Mines, at page 590, in the office of the County Recorder of Pima County, State of Arizona.

Also, those certain unpatented lode mining claims situated in the Helvetia Mining District, Pima County, State of Arizona, of which the names, together with the numbers of books and pages of Records of Mines in the office of said County Recorder of Pima County, Arizona, where their location notices are recorded, are as follows:

NAME	BOOK	PAGE
<i>Sunsette Forbes to Lewisohn Oct 23, 1958 docket 1329 p 385</i>		
Ruby <i>Forbes to Lewisohn Oct 23, 1958 docket 1329 p 390</i>	287	256
Irish	287	259
Axe	287	258
Adolph Lewisohn	710	346
Rosemont <i>Chilson to Lewisohn</i>	710	347
Albert Steinfeld <i>Copper Corp</i>	710	348
Hugh Young <i>Mining Deed</i>	712	108
Fred Bennett <i>11 July 1956 recorded</i>	712	107
Ethel	712	109
Albert <i>Docket 1008 p 533</i>	712	110
Rosemont #23 <i>Chilson to Lewisohn</i>	908	497
Rosemont #24	908	498
Rosemont #4 <i>Copper Corp</i>	908	499
Rosemont #20 <i>Mining Deed</i>	908	500
Rosemont #2 <i>10 July 1961 recorded</i>	908	501
Rosemont #25	908	502
Rosemont #3	908	503
Rosemont #1 <i>Docket 1801 p 44</i>	908	504
Flat Top <i>Mining Deed Chilson to Lewisohn Corp</i>	913	600
Round Top <i>Docket 984 p 115</i>	914	1
Alachua	916	549
Baker	916	550
Dade <i>Lewisohn staked</i>	916	551
Eustis <i>11-29-55</i>	916	552
Flagler	916	553
Glades	916	554
Hillsborough	916	555
Indian River	916	556
Jackson	916	557
Kissimmee	916	558

LEWISOHN GROUP

<u>NAME</u>	<u>BOOK</u>	<u>PAGE</u>
Liberty	916	559
Manatee	916	560
Nassau	916	561
Okeechobee	916	562
Putnam	916	563
3 Duzy <i>see Round Top p 1</i>	932	231
Suzy	934	536
Rosemont	936	418
Adolph Lewisohn	936	419
Rosemont #11	936	420
Rosemont #7	936	421
Hugh Young	936	422
Rosemont #8	936	423
Rosemont #9	936	424
Fred Bennett	936	425
Rx <i>Lewisohn staked</i>	936	426
Albert Steinfeld	936	427
Rosemont #14 <i>1-19-56</i>	936	428
Rosemont #15	936	429
Rosemont #16	936	430
Rosemont #12	936	431
Rosemont #17	936	432
Rosemont #18	936	433
Rosemont #13	936	434
Rosemont #19 <i>Lewisohn staked</i>	964	200
Rosemont #20	964	201
Rosemont #21 <i>3-26-56</i>	964	202
Rosemont #22	964	203
4 Waltham aka Walthum <i>Ruehlus to Lewisohn</i>	942	<i>Missing Deeds 1956 # 87 1962 see attached</i>
Polk	948	23
Orange	948	24
Volusia	948	25
Escambia	948	26
Leon	948	27
Brevard <i>Lewisohn staked</i>	948	28
Gadsden <i>2-16-56</i>	948	29
Pasco	948	30
Seminole	948	31
Marion	948	32
Lee	948	33
Palm	948	34
Union	948	469
Hendry	948	470
Wakulla	948	471
DeSoto <i>Lewisohn staked</i>	979	349
Esplande	979	350
Cord <i>4-30-56</i>	979	351
Franklin	979	352
Ford	979	353
Fiat	979	354
Buick	979	355
Bantam	979	356
Carter Car	979	357
Cunningham	979	358
Durant	979	359
Dodge	979	360
Electric	979	361
Everant	979	362

<u>NAME</u>	<u>BOOK</u>	<u>PAGE</u>
Austin	979	363
Auburn	979	364
Jim	995	391
Ben	995	392
Bob	995	393
Pete	995	394
John	995	395
Joe	995	396
Sam	1009	439
Fred	1009	440
Art	1009	441
Al	1009	442
Bert	1009	443

Also, those certain unpatented mill sites situated in the Helvetia Mining District, Pima County, State of Arizona, of which the names, together with the numbers of Books and pages of Records of Mines in the office of said County Recorder of Pima County, Arizona, where their location notices are recorded, are as follows:

*Lewisohn staked 10-15-56 recorded*

<u>NAME</u>	<u>BOOK</u>	<u>PAGE</u>
Ward Mill Site	1044	505
Mohawk Silver Mill Site	1044	506
LaFayette Mill Site	1044	507
Erie Mill Site	1044	508
Cuprite Mill Site	1044	509
Central Mill Site	1044	510
Black Mill Site	1044	511
Baltimore Mill Site	1044	512
Antelope Mill Site	1044	513
Altamont Mill Site	1044	514
Alta Copper Mill Site	1044	515
Arcola Mill Site	1044	516
Bonnie Blue Mill Site	1044	517
Blue Point Mill Site	1044	518
Cushing Mill Site	1044	519
Cuba Mill Site	1044	520
Potomac Mill Site aka Patomac	1044	521
Dan Webster	1044	522
Daylight Mill Site	1044	523
Exile Mill Site	1044	524
Falls Mill Site	1044	525
Peach Mill Site	1044	526
Waltham Mill Site	1044	527
Mohawk Mill Site	1044	528



11-20-70

LEWISOHN GROUP

*Lewisohn Copper Corp*

That certain patented lode mining claim situated in the Helvetia Mining District, Pima County, State of Arizona, known as the SUNSETE, designated by Surveyor General as Lot No. 2061, and particularly described in the United States patent therefor, which is recorded in Book No. 26, Deeds of Mines, at page 590, in the office of the County Recorder of Pima County, State of Arizona.

*Mar 6/1907  
Pat # 43765*

Also, those certain unpatented lode mining claims situated in the Helvetia Mining District, Pima County, State of Arizona, of which the names, together with the numbers of books and pages of Records of Mines in the office of said County Recorder of Pima County, Arizona, where their location notices are recorded, are as follows:

<u>NAME</u>	<u>BOOK</u>	<u>PAGE</u>
<i>Denver F Forbes</i> <i>9-25-50</i>		
Ruby	287	256
Irish	287	259
Axe	287	258
Adolph Lewisohn	710	346
Rosemont	710	347
Albert Steinfeld	710	348
Hugh Young	712	108
Fred Bennett	712	107
Ethel	712	109
Albert	712	110
Rosemont #23	908	497
Rosemont #24	908	498
Rosemont #4	908	499
Rosemont #20	908	500
Rosemont #2	908	501
Rosemont #25	908	502
Rosemont #3	908	503
Rosemont #1	908	504
Flat Top	913	600
Round Top	914	1
Alachua	916	549
Baker	916	550
Dade	916	551
Eustis	916	552
Flagler	916	553
Glades	916	554
Hillsborough	916	555
Indian River	916	556
Jackson	916	557
Kissimmee	916	558

*R Chilton*

*Levenson*

*R. Chilton  
for Levenson*

*11-5-55*

*11-18-50*

*Lewisohn Co*

*11-29-55*

*Granton*

## LEWISOHN GROUP

NAME

BOOK

PAGE

NAME	BOOK	PAGE
Liberty	916	559
Manatee	916	560
Nassau	916	561
Okeechobee	916	562
Putnam	916	563
Duzy LCC 1-10-56	932	231. R. Chiles 984/115
Suzy	934	536
Rosemont	936	418
Adolph Lewisohn	936	419
Rosemont #11	936	420
Rosemont #7	936	421
Hugh Young	936	422
Rosemont #8	936	423
Rosemont #9	936	424
Fred Bennett	936	425
Rx	936	426
Albert Steinfeld 1-19-56	936	427
Rosemont #14	936	428
Rosemont #15	936	429
Rosemont #16	936	430
Rosemont #12	936	431
Rosemont #17	936	432
Rosemont #18	936	433
Rosemont #13	936	434
Rosemont #19 LCC	964	200
Rosemont #20	964	201
Rosemont #21 3-26-56	964	202
Rosemont #22	964	203
Waltham aka Walthum	942	87
Polk	948	23
Orange	948	24
Volusia	948	25
Escambia	948	26
Leon	948	27
Brevard	948	28
Gadsden	948	29
Pasco	948	30
Seminole	948	31
Marion	948	32
Lee	948	33
Palm	948	34
Union	948	469
Hendry LCC 2-17-56	948	470
Wakulla	948	471
DeSoto	979	349
Esplande	979	350
Cord LCC	979	351
Franklin	979	352
Ford	979	353
Fiat	979	354
Buick	979	355
Bantam	979	356
Carter Car	979	357
Cunningham	979	358
Durant 4-30-56	979	359
Dodge	979	360
Electric	979	361
Everant	979	362

<u>NAME</u>	<u>BOOK</u>	<u>PAGE</u>
Austin <i>LCC 4-30-56</i>	979	363
Auburn	979	364
Jim	995	391
Ben <i>LCC</i>	995	392
Bob	995	393
Pete <i>4-30-56</i>	995	394
John	995	395
Joe	995	396
Sam	1009	439
Fred <i>LCC</i>	1009	440
Art <i>6-14-56</i>	1009	441
Al	1009	442
Bert	1009	443

Also, those certain unpatented mill sites situated in the Helvetia Mining District, Pima County, State of Arizona, of which the names, together with the numbers of Books and pages of Records of Mines in the office of said County Recorder of Pima County, Arizona, where their location notices are recorded, are as follows:

<u>NAME</u>	<u>BOOK</u>	<u>PAGE</u>
Ward Mill Site	1044	505
Mohawk Silver Mill Site	1044	506
LaFayette Mill Site	1044	507
Erie Mill Site	1044	508
Cuprite Mill Site	1044	509
Central Mill Site	1044	510
Black Mill Site	1044	511
Baltimore Mill Site	1044	512
Antelope Mill Site	1044	513
Altamont Mill Site	1044	514
Alta Copper Mill Site	1044	515
Arcola Mill Site	1044	516
Bonnie Blue Mill Site	1044	517
Blue Point Mill Site	1044	518
Cushing Mill Site	1044	519
Cuba Mill Site	1044	520
Potomac Mill Site aka Patomac	1044	521
Dan Webster	1044	522
Daylight Mill Site	1044	523
Exile Mill Site	1044	524
Falls Mill Site	1044	525
Peach Mill Site	1044	526
Waltham Mill Site	1044	527
Mohawk Mill Site	1044	528

*By Lewisohn Co Corp  
9-15-56 record 10-15-56*



ROSEMONT GROUP

Those certain patented lode mining claims and mill sites situated in the Helvetia Mining District, Pima County, State of Arizona, more particularly described as follows, to wit:

The COCONINO, OREGON COPPER, CHICAGO, ERIE, CUSHING, MARION, FRANKLIN, OLD PUT CON, OLD PAP COPPER, CENTRAL, FALLS, AJAX CONSOLIDATED, CUBA, HILO CONSOLIDATED, YORK, DAYLIGHT, POTOMAC, DAN WEBSTER, PATRICK HENRY, LaFAYETTE and R. G. INGERSOLL patented mining claims, designated by the Surveyor General as Lots Number 1297A and Number 1297B, and particularly described in the United States Patent therefor which is recorded in Book No. 22, Deeds of Mines, at pages 401 et. seq., reference to which is hereby made for a full description.

Also, the WARD, ALTA COPPER, BROADTOP, EXILE, KING, MALACHITE, BONNIE BLUE, AMOLE, CUPRITE, ARCOLA and BLUE POINT patented mining claims, designated by the Surveyor General as Lot Number 1308, and particularly described in the United States patent therefor which is recorded in Book No. 22, Deeds of Mines, at pages 377, et. seq., reference to which is hereby made for a fuller description.

Also, the GAP, MONITOR, SOUTH END and PEACH patented mining claims, designated by the Surveyor General as Lot Number 1305, and particularly described in the United States patent therefor which is recorded in Book No. 22, Deeds of Mines, at pages 383, et. seq., reference to which is hereby made for a fuller description.

Also, the MOHAWK SILVER and EMPIRE patented mining claims, designated by the Surveyor General as Lot Number 1299, and particularly described in the United States patent therefor which is recorded in Book No. 22, Deeds of Mines, at pages 386, et. seq., reference to which is hereby made for a fuller description.

Also, the BALTIMORE patented mining claim designated by the Surveyor General as Lot Number 1312, and particularly described in the United States patent thereof which is recorded in Book No. 22, Deeds of Mines, at pages 389, et. seq., reference to which is hereby made for a fuller description.

Also, the TREMONT patented mining claim, designated by the Surveyor General as Lot Number 1302, and particularly described in the United States patent therefor which is recorded in Book No. 22, Deeds of Mines, at pages 390, et. seq., reference to which is hereby made for a full description.

EXHIBIT "A"

Also, the MOHAWK patented mining claim, designated by the Surveyor General as Lot Number 1300, and particularly described in the United States patent therefor which is recorded in Book No. 22, Deeds of Mines, at pages 392, et. seq., reference to which is hereby made for a fuller description.

Also, the ALTAMONT patented mining claim, designated by the Surveyor General as Lot Number 1301, and particularly described in the United States patent therefor which is recorded in Book No. 22, Deeds of Mines, at pages 394, et. seq., reference to which is hereby made for a fuller description.

Also, the BLACK BESS patented mining claim, designated by the Surveyor General as Lot Number 1303, and particularly described in the United States Patent therefor which is recorded in Book No. 22, Deeds of Mines, at pages 396, et. seq., reference to which is hereby made for a fuller description.

Also, the NEWMAN patented mining claim, designated by the Surveyor General as Lot Number 1304, and particularly described in the United States patent therefor which is recorded in Book No. 22, Deeds of Mines, at pages 397, et. seq., reference to which is hereby made for a fuller description.

Also, the ANTELOPE patented mining claim, designated by the Surveyor General as Lot Number 1311, and particularly described in the United States patent therefor which is recorded in Book No. 22, Deeds of Mines, at pages 399, et. seq., reference to which is hereby made for a fuller description.

Also, the COCONINO, CHICAGO, OREGON, OLD PUT, AJAX CONSOLIDATED, OLD PAP and FRANKLIN patented mill sites, designated by the Surveyor General as Lots Number 1297A and Number 1297B, and particularly described in the United States Patent therefor which is recorded in Book No. 22, Deeds of Mines, at pages 401, et. seq., reference to which is hereby made for a fuller description.

The above mentioned Deeds of Mines being an official record in the office of the County Recorder of Pima County, State of Arizona.

TIP TOP GROUP

Those certain unpatented lode mining claims situate in the Helvetia Mining District in Pima County, State of Arizona, of which the names, together with the numbers of books and pages of Records of Mines in the office of the County Recorder of said Pima County, Arizona, where their location notices are recorded, are as follows:

<u>NAME</u>	<u>ORIGINAL</u>		<u>AMENDED</u>	
	<u>BOOK</u>	<u>PAGE</u>	<u>BOOK</u>	<u>PAGE</u>
Alta No. 1, aka Alta	MMM	294	464	65
America No. 1	MMM	295	464	63
America No. 2	MMM	293	464	64
Apricot	MMM	292	464	60
French King	MMM	289	464	67
Alexander	MMM	290	464	59
Italian Queen	MMM	291	464	71
Shovel	MMM	331	464	70
Four Queens	287	257		
Annie No. 1, aka Anne No. 1	MMM	333	464	61
Annie No. 2, aka Anne No. 2	MMM	334	464	62
Corner Stone	MMM	464		
Corner Stone No. 1	MMM	465	464	68
Corner Stone No. 3	MMM	467	464	69
Cherry	MMM	330	464	66

EXHIBIT "A"

Exhibit C



BLANKENSHIP GROUP

Those certain patented lode mining claims and mill sites situated in the Helvetia Mining District, Pima County, State of Arizona, more particularly described as follows, to-wit:

The TELEPHONE, ELGIN, DAN GENERAL, HATTIE, WEST END, BLACK HAWK, CHANCE, TELEMETER, BACK BONE, SLIDE, SILVER SPUR, RECORDER, WEDGE, OLD DICK, AMERICAN, LIGHT WEIGHT, HEAVY WEIGHT, BUZZARD, FLYING DUTCHMAN, WISCONSIN, WATER WISH, NEW MEXICO, GRIZZLY, LEADER, EXCHANGE, EXCHANGE NO. 2, COPPER WORLD, TALLYHO, COPPER FEND, OWOSKO, BLACK HORSE, BRUNSWICK, LITTLE DAVE, ISLE ROYALE, INDIAN CLUB, PILOT, A.O.T., and VULTURE patented mining claims, designated on Mineral Survey 1388A, and particularly described in the United States Patent therefor No. 32859, recorded in Docket 1705 at page 92 in the Office of the County Recorder of Pima County, State of Arizona.

Also, the ELGIN, RECORDER, AMERICAN, WEDGE, DAN, TELEPHONE, HEAVY WEIGHT, and OLD DICK patented mill sites, designated on Mineral Survey 1388B, and particularly described in the United States Patent therefor No. 32859, recorded in Docket 1705 at page 92 in the Office of the County Recorder of Pima County, State of Arizona.

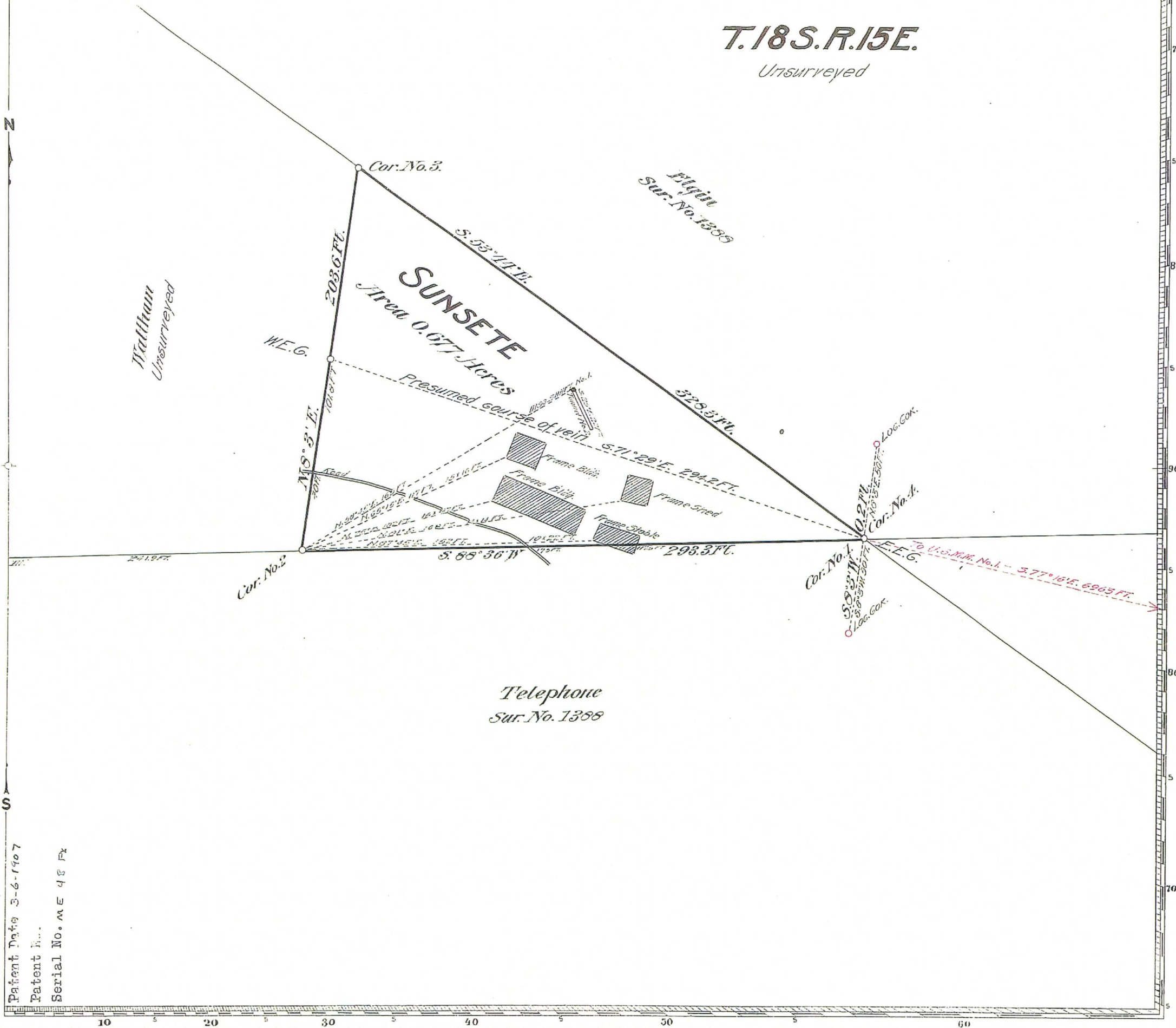
That certain one (1) unpatented lode mining claim named Boston situated in Helvetia Mining District, Pima County, State of Arizona location notice of which is recorded in the Office of the County Recorder of Pima County in Book 1750 at page 237.

That certain one (1) unpatented mill site named Boston situated in Helvetia Mining District, Pima County, Arizona location notice of which is recorded in the Office of the County Recorder of Pima County in Book 1750 at page 238.

EXHIBIT "A"

T.18S.R.15E.

Unsurveyed



Mineral Survey No 2061

L.O.T. No

Atla

Land District.

PLAT

OF THE CLAIM OF

Peter Lauterbach and John Murphy  
KNOWN AS THE

SUNSETE

IN Helvetia MINING DISTRICT,  
Pima COUNTY, Arizona  
Containing an Area of 0.677 Acres.  
Scale of 50 Feet to the inch.  
Variation 15° East  
SURVEYED June 20th 1905 BY  
Philip Gortzen  
U.S. Deputy Mineral Surveyor.

The Original Field Notes of the Survey of the Mining Claim of  
Peter Lauterbach and John Murphy  
known as the

Sunsete

from which this plat has been made under my direction,  
have been examined and approved, and are on file in this office;  
and I hereby certify that they furnish such an accurate descrip-  
tion of said Mining Claim as will, if incorporated into a patent,  
serve fully to identify the premises, and that such reference  
is made therein to natural objects or permanent monuments  
as will perpetuate and fix the locus thereof.

I further certify that Five Hundred Dollars worth of labor has  
been expended or improvements made upon said Mining  
Claim by claimants or their grantors, and that  
said improvements consist of Disc. shaft No. 1, 4x6x31 Ft.  
and tunnel No. 2, 4x6x22 Ft. valued at \$500.00

that the location of said improvements is correctly shown  
upon this plat, and that no portion of said labor or im-  
provements has been included in the estimate of expendi-  
tures upon any other claim.

And I further certify that this is a correct plat of said Mining  
Claim made in conformity with said original field notes of the  
survey thereof, and the same is hereby approved.

U.S. Surveyor General's Office. Frank J. Sargent  
Phoenix, Arizona. U.S. Surveyor General for  
Aug. 3rd, 1905 ARIZONA

Patent Date 3-6-1907  
Patent No.  
Serial No. ME 48 Fx



15

14

13

18

22

23

24

19

19097 ACRES OWNED BY THE HELVETIA COPPER CO

PRODUCTION FROM HELVETIA DISTRICT UP TO 1957 BY MINE<sup>1</sup>

NAME OF MINE	COPPER lb.	SILVER oz.
Narragansett & Daylight <sup>2</sup>	6,300,000	63,000
King & Bonnie Blue <sup>3</sup>	4,500,000	42,000
Tip Top (Alta I)	2,750,000	8,000
Isle Royal	2,400,000	?
Copper World	2,000,000	10,000
Elgin	2,000,000	100,000
Mohawk	1,180,000	26,000
Old Dick & American	950,000	10,000
Peach	900,000	45,000
Leader <sup>4</sup>	560,000	6,500
Omega	500,000	10,000
Heavy Weight	300,000	?
Bulldozer	300,000	?
Oregon Copper	250,000	?
Saratoga (Sweet Bye and Bye)	200,000	?
Old Pap Copper	160,000	?
Chicago	120,000	?
American I (Copper Duke)	100,000	?
Black Horse	100,000	?
Newman	90,000	?
Falls	35,000	?
Old Put Con.	15,000	?
Codonino	10,000	?
Excelsior	?	?
Last Chance 2	?	?
Humbug	?	?
Hunter	?	?
La Fayette	?	?
South End	?	?
American 2 (Noonday)	?	?
Chance	?	?
Silver Spur	?	?
Recorder	?	?
Exchange	?	?
Indian Club	?	?
Pilot	?	?
Eclipse Copper (Eclipse)	?	?
Olcott (Triangle)	?	?
Eldon (Backbone)	?	?
Broadtop & Alta Copper	?	?

1. All figures are approximate. Total production from Helvetia District 1908-1953 from Arizona Metals Production and Minerals Yearbook: Gold, \$33,301; Zinc, 1,100,580 pounds; Lead, 426,032 pounds. Approximate totals of copper and silver production up to 1957 are 25,000,000 pounds and 330,000 ounces, respectively.
2. Also 750,000 pounds combined lead and zinc.
3. Also 50,000 pounds zinc and 7 ounces gold.
4. Also 6.5 tons 90% MoS<sub>2</sub> concentrate and 21 ounces gold.
5. Less than 100,000 pounds or production unknown.

TOTAL PRODUCTION

MORE THAN 1,000,000 LBS.

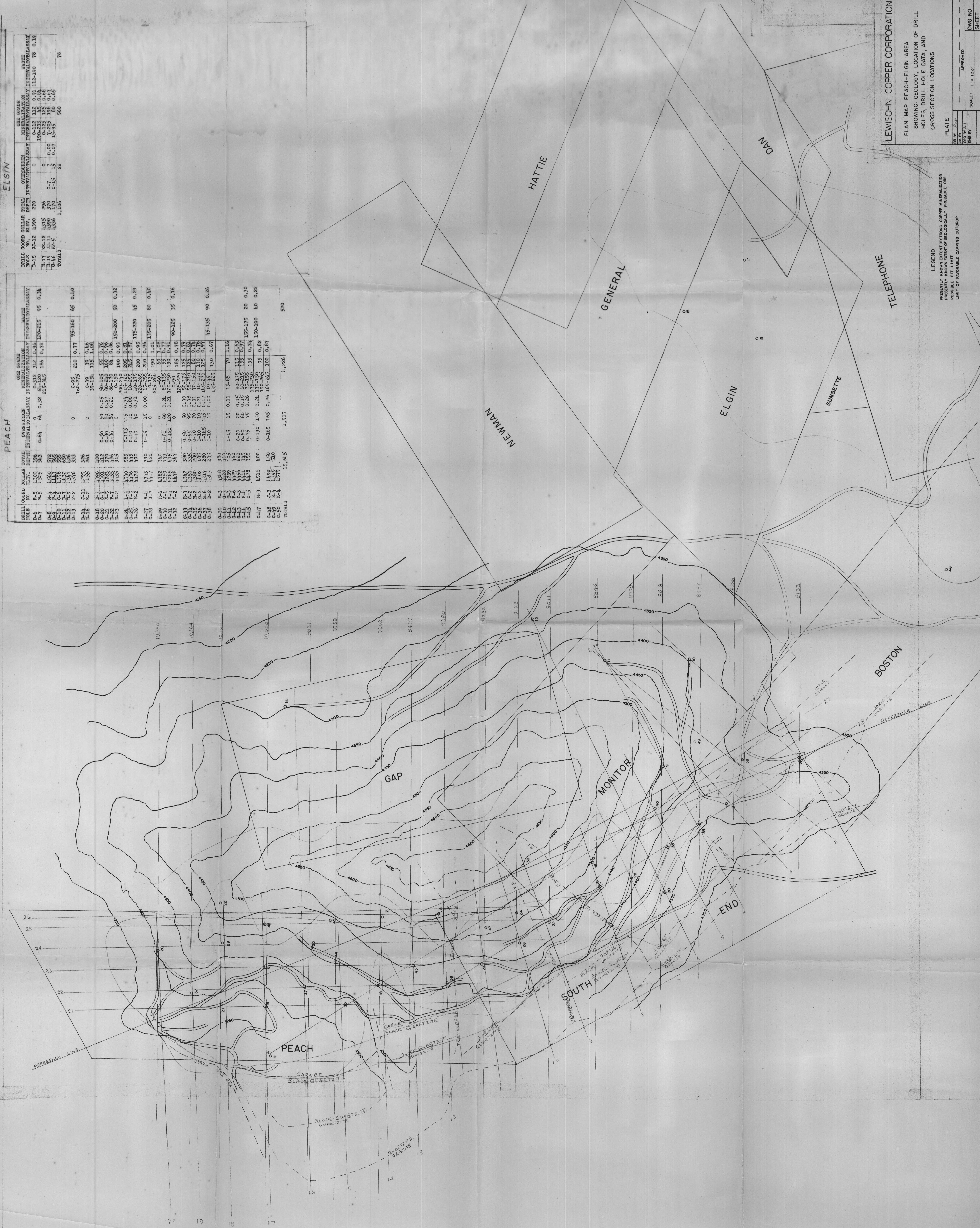
1,000,000 LBS. TO 100,000 LBS.

LESS THAN 100,000 LBS.

SCALE: 1" = 1,200' (APPROX)





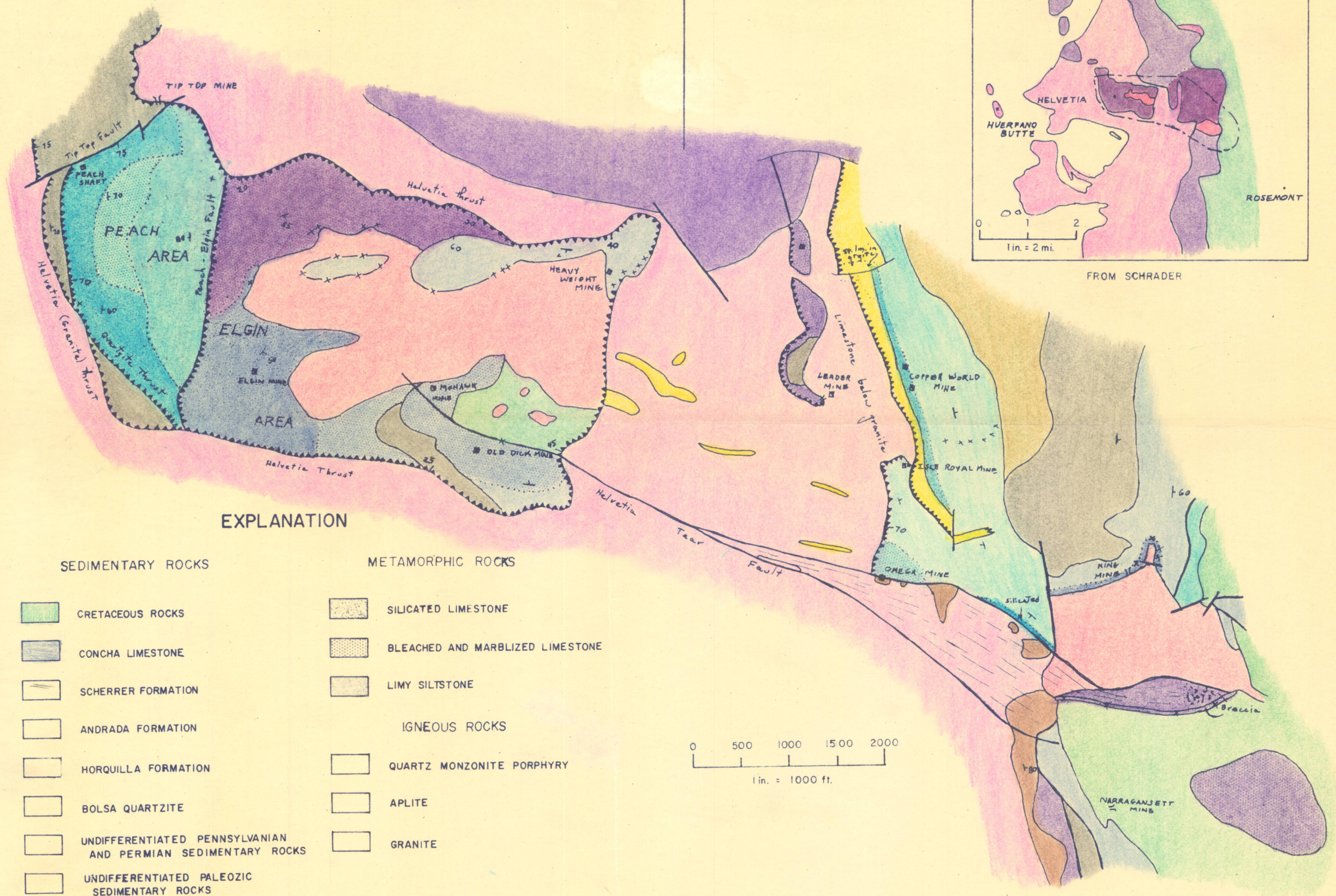


PEACH				ELGIN			
DRILL	COORD	COLLAR	NO.	DRILL	COORD	COLLAR	NO.
D-1	100	100	100	D-1	100	100	100
D-2	100	100	100	D-2	100	100	100
D-3	100	100	100	D-3	100	100	100
D-4	100	100	100	D-4	100	100	100
D-5	100	100	100	D-5	100	100	100
D-6	100	100	100	D-6	100	100	100
D-7	100	100	100	D-7	100	100	100
D-8	100	100	100	D-8	100	100	100
D-9	100	100	100	D-9	100	100	100
D-10	100	100	100	D-10	100	100	100
D-11	100	100	100	D-11	100	100	100
D-12	100	100	100	D-12	100	100	100
D-13	100	100	100	D-13	100	100	100
D-14	100	100	100	D-14	100	100	100
D-15	100	100	100	D-15	100	100	100
D-16	100	100	100	D-16	100	100	100
D-17	100	100	100	D-17	100	100	100
D-18	100	100	100	D-18	100	100	100
D-19	100	100	100	D-19	100	100	100
D-20	100	100	100	D-20	100	100	100
D-21	100	100	100	D-21	100	100	100
D-22	100	100	100	D-22	100	100	100
D-23	100	100	100	D-23	100	100	100
D-24	100	100	100	D-24	100	100	100
D-25	100	100	100	D-25	100	100	100
D-26	100	100	100	D-26	100	100	100
D-27	100	100	100	D-27	100	100	100
D-28	100	100	100	D-28	100	100	100
D-29	100	100	100	D-29	100	100	100
D-30	100	100	100	D-30	100	100	100
D-31	100	100	100	D-31	100	100	100
D-32	100	100	100	D-32	100	100	100
D-33	100	100	100	D-33	100	100	100
D-34	100	100	100	D-34	100	100	100
D-35	100	100	100	D-35	100	100	100
D-36	100	100	100	D-36	100	100	100
D-37	100	100	100	D-37	100	100	100
D-38	100	100	100	D-38	100	100	100
D-39	100	100	100	D-39	100	100	100
D-40	100	100	100	D-40	100	100	100
D-41	100	100	100	D-41	100	100	100
D-42	100	100	100	D-42	100	100	100
D-43	100	100	100	D-43	100	100	100
D-44	100	100	100	D-44	100	100	100
D-45	100	100	100	D-45	100	100	100
D-46	100	100	100	D-46	100	100	100
D-47	100	100	100	D-47	100	100	100
D-48	100	100	100	D-48	100	100	100
D-49	100	100	100	D-49	100	100	100
D-50	100	100	100	D-50	100	100	100
D-51	100	100	100	D-51	100	100	100
D-52	100	100	100	D-52	100	100	100
D-53	100	100	100	D-53	100	100	100
D-54	100	100	100	D-54	100	100	100
D-55	100	100	100	D-55	100	100	100
D-56	100	100	100	D-56	100	100	100
D-57	100	100	100	D-57	100	100	100
D-58	100	100	100	D-58	100	100	100
D-59	100	100	100	D-59	100	100	100
D-60	100	100	100	D-60	100	100	100
D-61	100	100	100	D-61	100	100	100
D-62	100	100	100	D-62	100	100	100
D-63	100	100	100	D-63	100	100	100
D-64	100	100	100	D-64	100	100	100
D-65	100	100	100	D-65	100	100	100
D-66	100	100	100	D-66	100	100	100
D-67	100	100	100	D-67	100	100	100
D-68	100	100	100	D-68	100	100	100
D-69	100	100	100	D-69	100	100	100
D-70	100	100	100	D-70	100	100	100
D-71	100	100	100	D-71	100	100	100
D-72	100	100	100	D-72	100	100	100
D-73	100	100	100	D-73	100	100	100
D-74	100	100	100	D-74	100	100	100
D-75	100	100	100	D-75	100	100	100
D-76	100	100	100	D-76	100	100	100
D-77	100	100	100	D-77	100	100	100
D-78	100	100	100	D-78	100	100	100
D-79	100	100	100	D-79	100	100	100
D-80	100	100	100	D-80	100	100	100
D-81	100	100	100	D-81	100	100	100
D-82	100	100	100	D-82	100	100	100
D-83	100	100	100	D-83	100	100	100
D-84	100	100	100	D-84	100	100	100
D-85	100	100	100	D-85	100	100	100
D-86	100	100	100	D-86	100	100	100
D-87	100	100	100	D-87	100	100	100
D-88	100	100	100	D-88	100	100	100
D-89	100	100	100	D-89	100	100	100
D-90	100	100	100	D-90	100	100	100
D-91	100	100	100	D-91	100	100	100
D-92	100	100	100	D-92	100	100	100
D-93	100	100	100	D-93	100	100	100
D-94	100	100	100	D-94	100	100	100
D-95	100	100	100	D-95	100	100	100
D-96	100	100	100	D-96	100	100	100
D-97	100	100	100	D-97	100	100	100
D-98	100	100	100	D-98	100	100	100
D-99	100	100	100	D-99	100	100	100
D-100	100	100	100	D-100	100	100	100

LEWISCHN COPPER CORPORATION  
PLAN MAP PEACH-ELGIN AREA  
SHOWING GEOLOGY, LOCATION OF DRILL HOLES, DRILL HOLE DATA, AND CROSS SECTION LOCATIONS  
PLATE 1  
DWG NO. 1  
SHEET 1

LEGEND  
PRESENTLY KNOWN EXTENT OF COPPER MINERALIZATION  
PRESENTLY KNOWN EXTENT OF GEOLOGICALLY PROBABLE ORE  
LIMIT OF FAVORABLE CAPPING OUTCROP

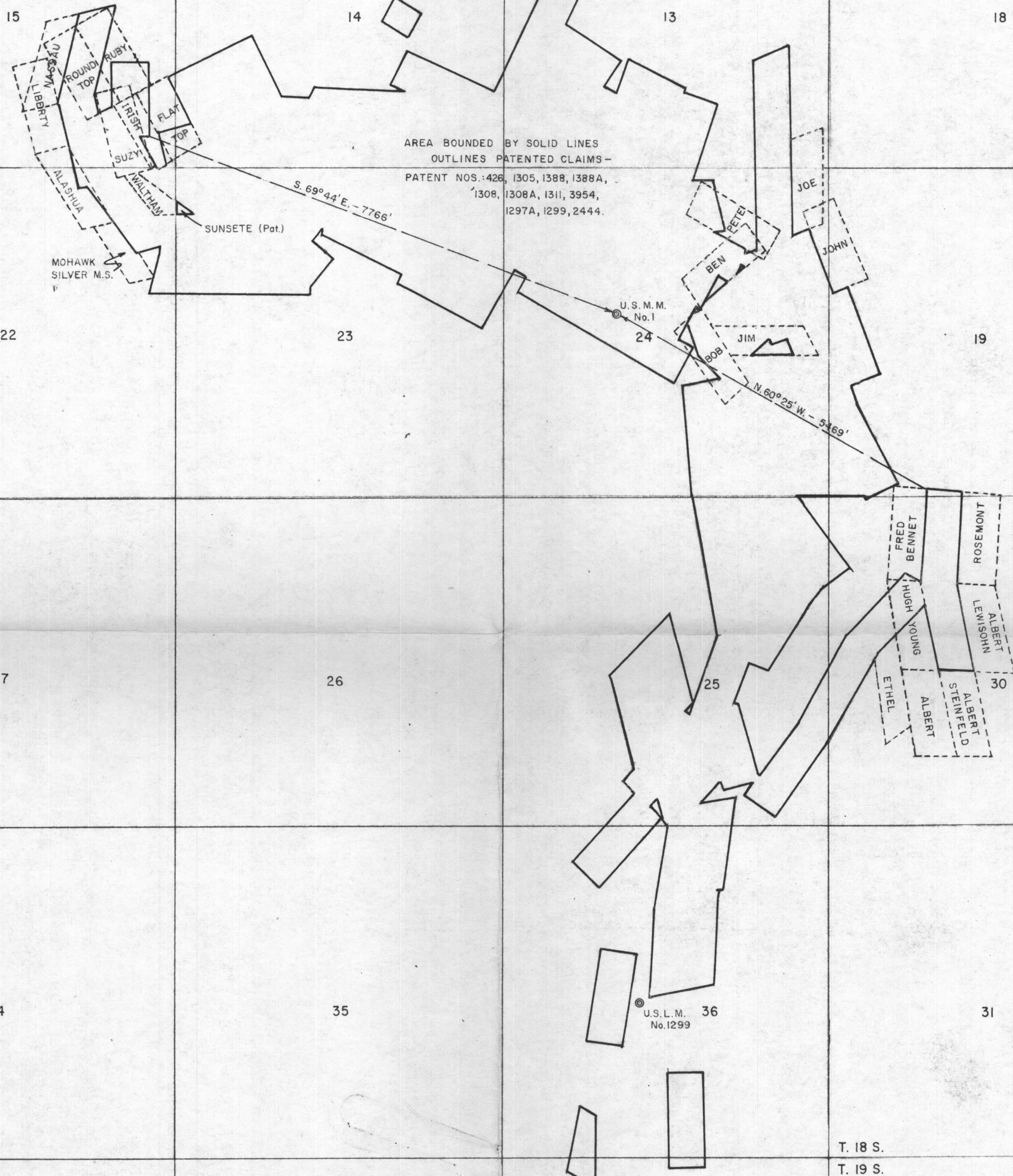




SKETCH GEOLOGIC MAP OF PART OF THE HELVETIA DISTRICT, ARIZONA



R. 15 E. R. 16 E.



NOTES:

1. Patented claim outline plotted by bearings and distances obtained from B.L.M. files in Phoenix.
2. Unpatented claims (dashed lines) plotted from Pima County Recorder's office files and can not be considered accurate.
3. Balance of unpatented Lewisohn Group of claims could not be plotted due to lack of information.

SCALE  
0 500 1000 1500 3000 4500 feet

Claim Map of  
LEWISOHN GROUP

HELVETIA MINING DISTRICT  
Pima County, Arizona

Dwn.: H.A. Higbie

April - 1970