



CONTACT INFORMATION
Mining Records Curator
Arizona Geological Survey
3550 N. Central Ave, 2nd floor
Phoenix, AZ, 85012
602-771-1601
<http://www.azgs.az.gov>
inquiries@azgs.az.gov

The following file is part of the Anderson Mine Collection

ACCESS STATEMENT

These digitized collections are accessible for purposes of education and research. We have indicated what we know about copyright and rights of privacy, publicity, or trademark. Due to the nature of archival collections, we are not always able to identify this information. We are eager to hear from any rights owners, so that we may obtain accurate information. Upon request, we will remove material from public view while we address a rights issue.

CONSTRAINTS STATEMENT

The Arizona Geological Survey does not claim to control all rights for all materials in its collection. These rights include, but are not limited to: copyright, privacy rights, and cultural protection rights. The User hereby assumes all responsibility for obtaining any rights to use the material in excess of "fair use."

The Survey makes no intellectual property claims to the products created by individual authors in the manuscript collections, except when the author deeded those rights to the Survey or when those authors were employed by the State of Arizona and created intellectual products as a function of their official duties. The Survey does maintain property rights to the physical and digital representations of the works.

QUALITY STATEMENT

The Arizona Geological Survey is not responsible for the accuracy of the records, information, or opinions that may be contained in the files. The Survey collects, catalogs, and archives data on mineral properties regardless of its views of the veracity or accuracy of those data.



SELF POTENTIAL

DENSITY

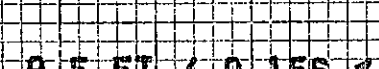
NATURAL GAMMA RAY COUNTS PER SECOND

RESISTANCE
OHMS

MIKE DODGE

DEPTH SCALE = 5 FEET/INCH

265

[illegible]

295

.1 % $\epsilon_{U_3O_8}$ /INCH
CONVERGENCE FACTOR = 0.982

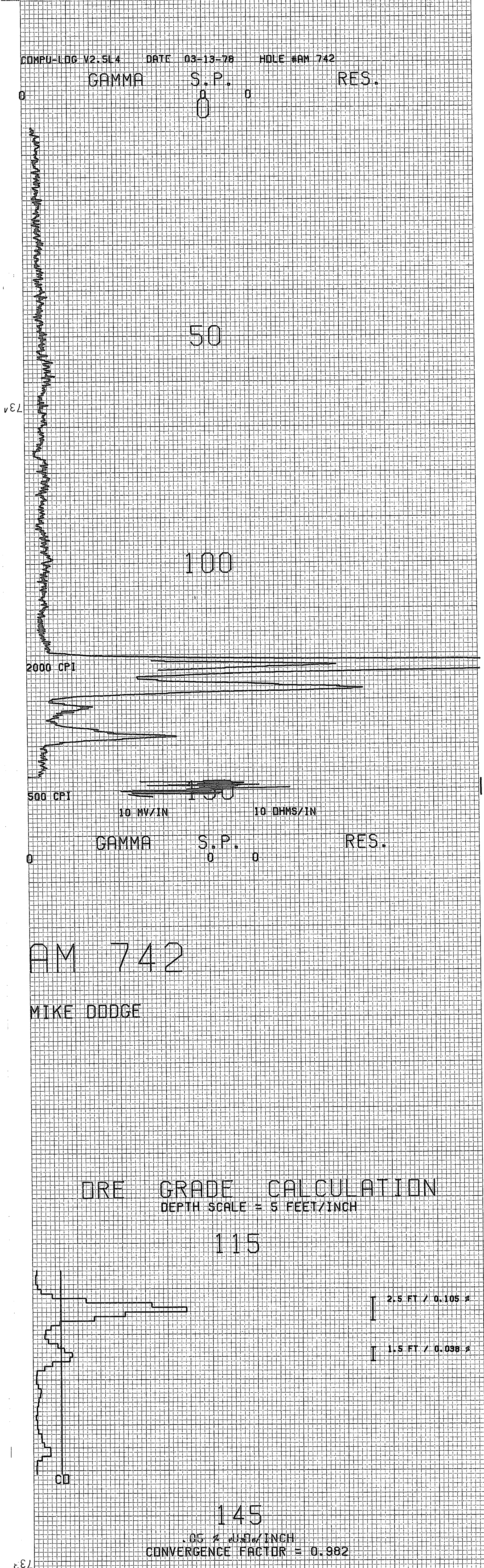
[illegible]

SELF POTENTIAL

DENSITY

NATURAL GAMMA RAY COUNTS PER-SECOND

RESISTANCE

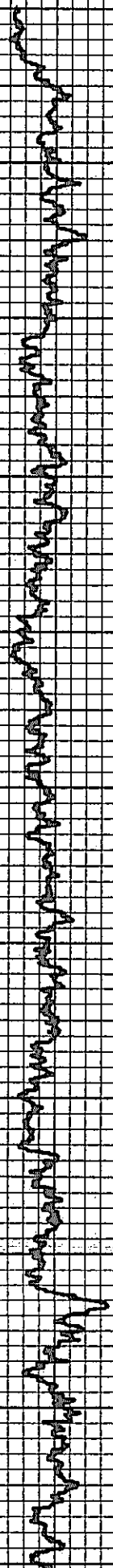


MINERALS EXPLORATION CO.

CASPER, WYOMING

HOLE NO. Am 743

LOCATION ANDERSON MINE				GAMMA SCALE	500=50CPI
COUNTY YAVAPAI STATE AZ				PROBE TYPE	SCINT
GP. ELEV.				K-FACTOR	6.00 E-5
SEC. TWP. RGE.				DEAD TIME	9.2 μ s
DATE	3-7-78			TIME CONSTANT	1
DEPTH DRILLED	125			PROBE DIA.	1 5/8
DEPTH LOGGED	102			CALIPER	-
FOOTAGE LOGGED				DIRECTIONAL SURVEY	-
HOLE DIAMETER	6			TEMPERATURE	-
WATER FACTOR	-			OPERATOR	ERICKSON
RESISTIVITY	- OHMS/INCH			DRILLER	ED
SELF POTENTIAL	- M.V./IN.			CONTRACTOR	VENTURE
RERUNS	1ST. RUN	2ND. RUN	3RD. RUN	LAST A.E.C. PIT RUN	2-24-78
BOTTOM				FLUID LEVEL	
TOP				REMARKS:	
TOTAL FEET					
SCALE RUN					



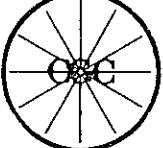
0

50

102

500=50CPI
TC1

AM 743



C-366-E SP 11748B

COMPANY

BORE HOLE

AREA

COUNTY

SECTION

TOWNSHIP

RANGE

LOG MEASURED FROM

DATE

3-16-78

HOLE NO.

AM 744

SEC.

TWP.

RANGE

AREA

ANDERSON MINE

COUNTY

YAVAPAI

STATE

ARIZONA

COMPANY

MINERALS EXPLOR.

DATE

3-16-78

TOTAL FOOTAGE LOGGED

98'

T.D. DRILLED

100'

BIT SIZE

5 1/8 in.

CASING

—

BORE HOLE FLUID

H₂O + mud

DENSITY

VISCOSITY

RESISTIVITY

OPERATOR

M. DODGE

UNIT NO.

7750

LOCATION

WICKENBERG, AZ.

DRIVE

0.25 Hrs.

TIME IN

0930

STAND BY

—

TIME OUT

1000

LOGGING

0.5 Hrs.

TOTAL

0.75 Hrs.

ROUNDTRIP

MILEAGE

Miles

CHARGEABLE

STANDBY

Hrs.

INITIAL RUN	
T.D. LOGGED	98'
GAMMA SCALE	
= 500 Cps. Per In.	
TIME CONSTANT	LOGGING SPEED
	60 Ft./Min.
CALIBRATION & PROBE DATA	
SOURCE NO.	SOURCE VALUE
PROBE NO.	PROBE SIZE
9055-23	1 7/8 in.
DETECTOR	TYPE & SIZE
NAI SCINT. XTAL 7/8" x 4"	
DEAD TIME	K FACTOR
1.075 μsec.	5.58 x 10 ⁻⁶
WATER FACTOR	AIR FACTOR
1.135	1.00
RES. SCALE	
20 ohms per 1 inches	
S.P.	
10 mv/in.	

GAMMA RERUNS (Initial run offscale)		
SCALE	SCALE	SCALE
= Cps. Per In.	= Cps. Per In.	= Cps. Per In.
T.C.	LOGGING SPEED	T.C.
Sec.	Ft./Min.	Sec.
FROM	FROM	FROM
TO	TO	TO
FI.	FI.	FI.
TOTAL	TOTAL	TOTAL

TRACK USED: #1

PROBE K-FACTOR FROM E.R.O.A. PITS 3-10-78: 5.695×10^{-6}

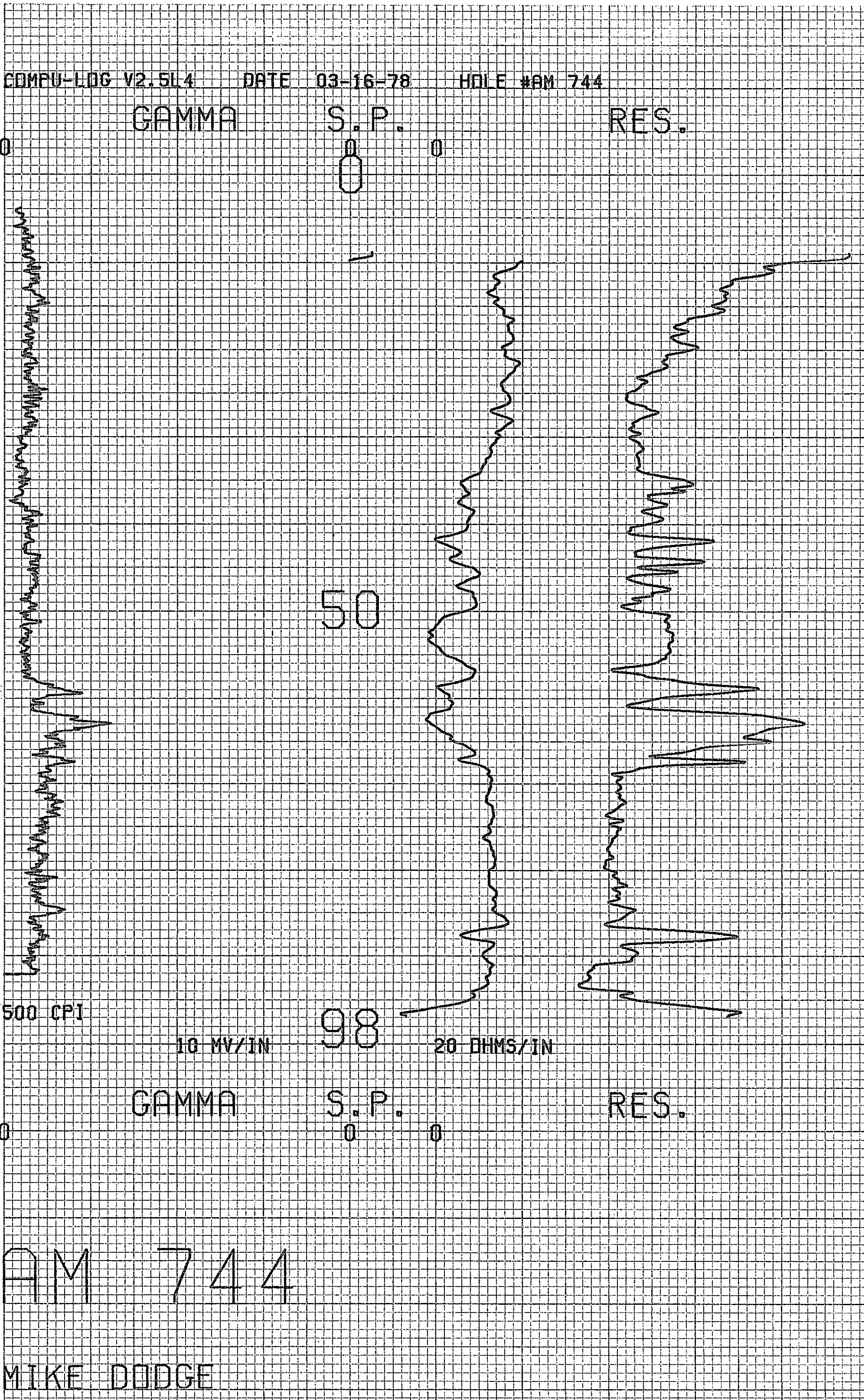
RIG: HARRIS (VERN)

SELF POTENTIAL

DENSITY

NATURAL GAMMA RAY
COUNTS PER SECOND

RESISTANCE
OHMS

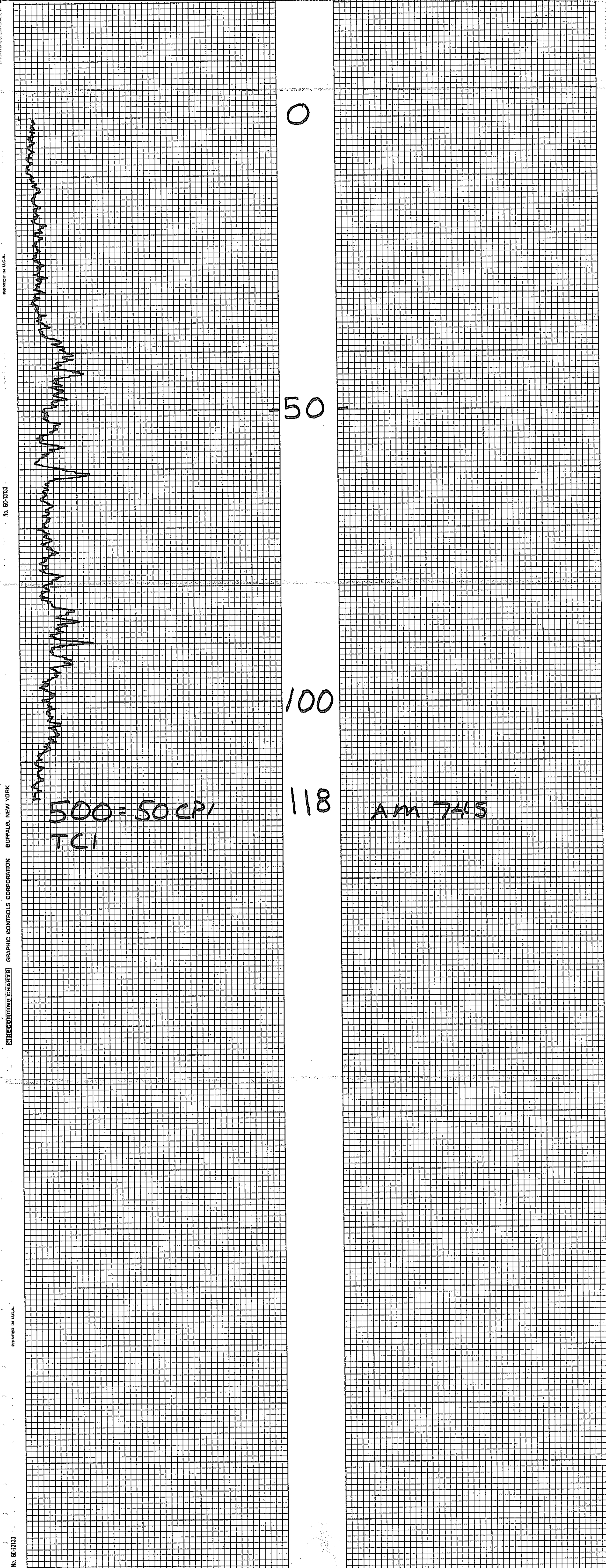


MINERALS EXPLORATION CO.

CASPER, WYOMING

HOLE NO. AM 745

LOCATION ANDERSON MINE				GAMMA SCALE	500 = 50 CPI
COUNTY YAVAPI STATE AZ				PROBE TYPE	SCINT
GP. ELEV.				K-FACTOR	6.00E-5
SEC. TWP. RGE.				DEAD TIME	9.2 MS
DATE	3-7-78			TIME CONSTANT	1
DEPTH DRILLED	725			PROBE DIA.	1 5/8
DEPTH LOGGED	118			CALIPER	-
FOOTAGE LOGGED				DIRECTIONAL SURVEY	-
HOLE DIAMETER	5 1/2			TEMPERATURE	-
WATER FACTOR	-			OPERATOR	ERICKSON
RESISTIVITY	- OHMS/INCH			DRILLER	FRED
SELF POTENTIAL	- M.V./IN.			CONTRACTOR	COBRA
RERUNS	1ST. RUN	2ND. RUN	3RD. RUN	LAST A.E.C. PIT RUN	2-24-78
BOTTOM				FLUID LEVEL	
TOP				REMARKS:	
TOTAL FEET					
SCALE RUN					



PRINTED IN U.S.A.

No. BC-1313

RECORDING CHARTS GRAPHIC CONTROLS CORPORATION BUFFALO, NEW YORK

PRINTED IN U.S.A.

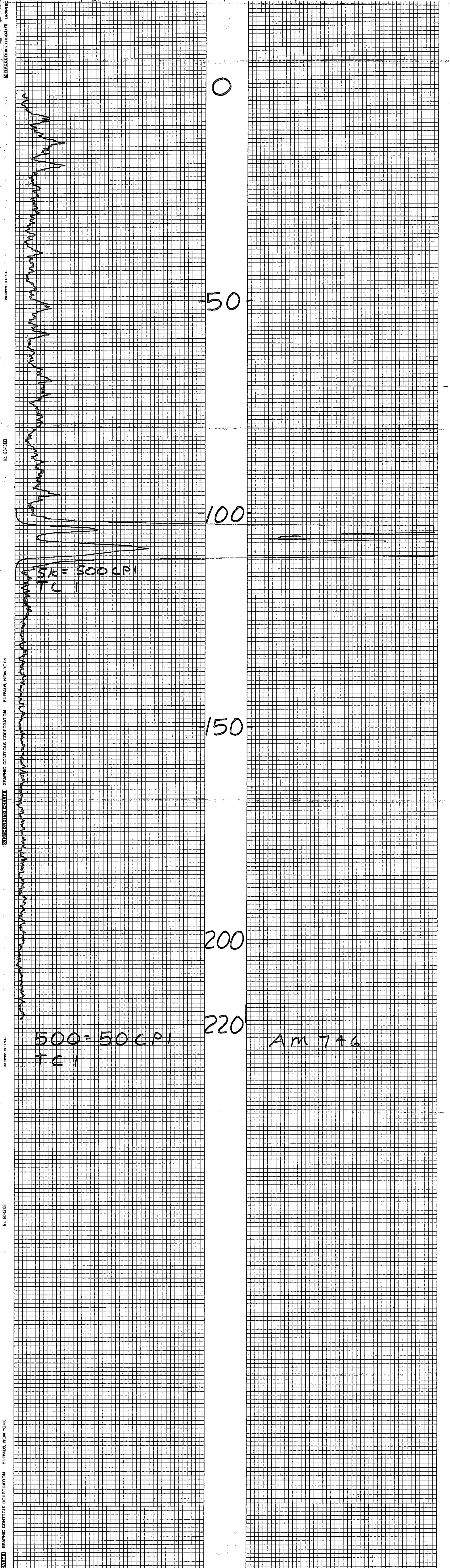
No. BC-1313

MINERALS EXPLORATION CO.

CASPER, WYOMING

HOLE NO. Am 746

LOCATION ANDERSON MINE				GAMMA SCALE	500=50CPI
COUNTY YAVAPAI STATE AZ				PROBE TYPE	SCINT
GP.				K-FACTOR	6.00E-5
ELEV.				DEAD TIME	9.2us
SEC. TWP. RGE.				TIME CONSTANT	1
DATE	4-2-78			PROBE DIA.	1 5/8
DEPTH DRILLED	220			CALIPER	-
DEPTH LOGGED	220			DIRECTIONAL SURVEY	-
FOOTAGE LOGGED				TEMPERATURE	-
HOLE DIAMETER	5 1/8			OPERATOR	ERICKSON
WATER FACTOR	-			DRILLER	CLYDE
RESISTIVITY	-			CONTRACTOR	HARRIS
SELF POTENTIAL	-			LAST A.E.C. PIT RUN	2-24-78
RERUNS	1ST. RUN	2ND. RUN	3RD. RUN	FLUID LEVEL	
BOTTOM	115			REMARKS:	
TOP	100				
TOTAL FEET	15				
SCALE RUN	5K				

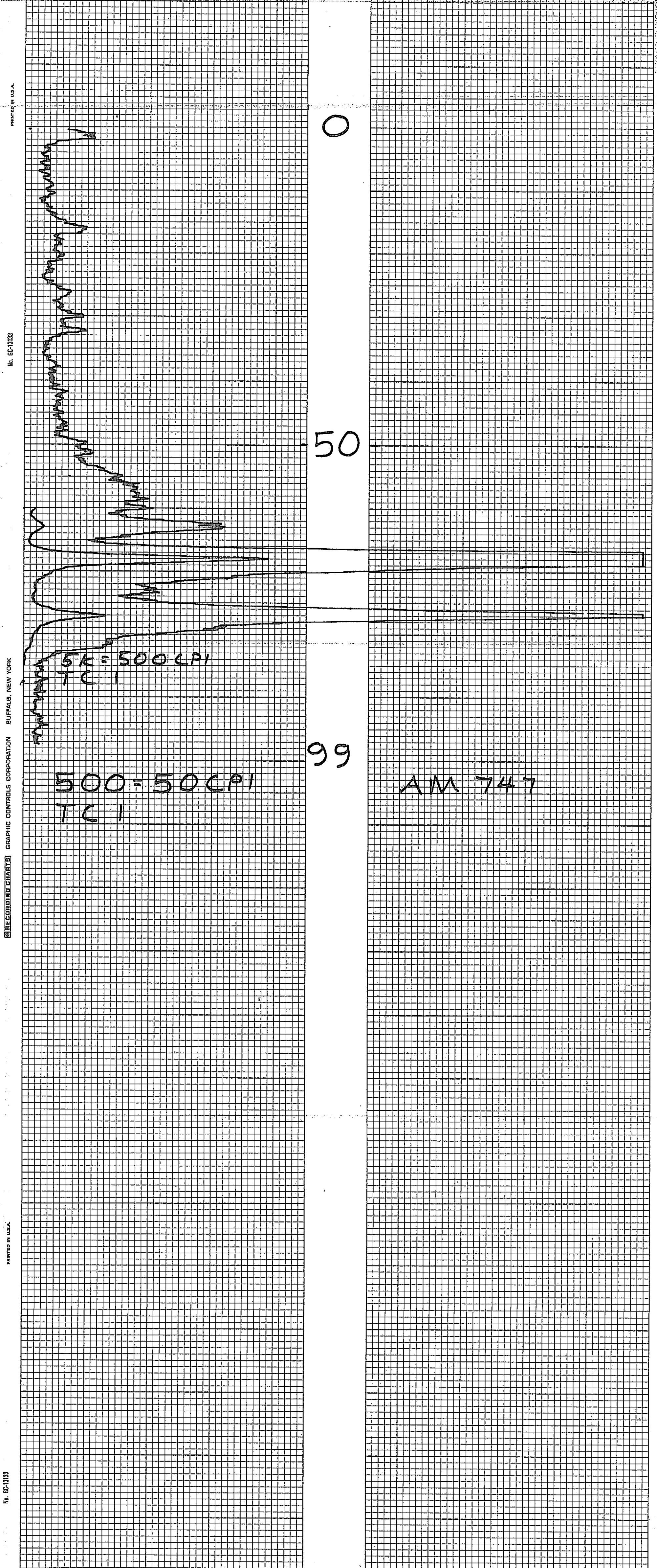


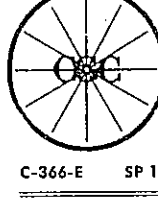
MINERALS EXPLORATION CO.

CASPER, WYOMING

HOLE NO. AM 747

LOCATION ANDERSON MINE				GAMMA SCALE	500=50CPI
COUNTY YAVAPAI STATE AZ				PROBE TYPE	SCINT
GP.				K-FACTOR	6.00 E-5
ELEV.				DEAD TIME	9.2 ms
SEC.				TIME CONSTANT	1
TWP.				PROBE DIA.	1 5/8
RGE.				CALIPER	-
DATE	3-31-78			DIRECTIONAL SURVEY	-
DEPTH DRILLED	100			TEMPERATURE	-
DEPTH LOGGED	99			OPERATOR	ERICKSON
FOOTAGE LOGGED				DRILLER	ED
HOLE DIAMETER	6			CONTRACTOR	VENTURE
WATER FACTOR	-			LAST A.E.C. PIT RUN	2-24-78
RESISTIVITY	-			OHMS/INCH	
SELF POTENTIAL	-			M.V./IN.	
RERUNS	1ST. RUN	2ND. RUN	3RD. RUN	FLUID LEVEL	
BOTTOM	85			REMARKS:	
TOP	60				
TOTAL FEET	25				
SCALE RUN	5k				

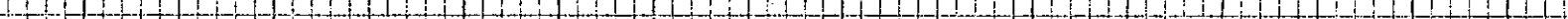
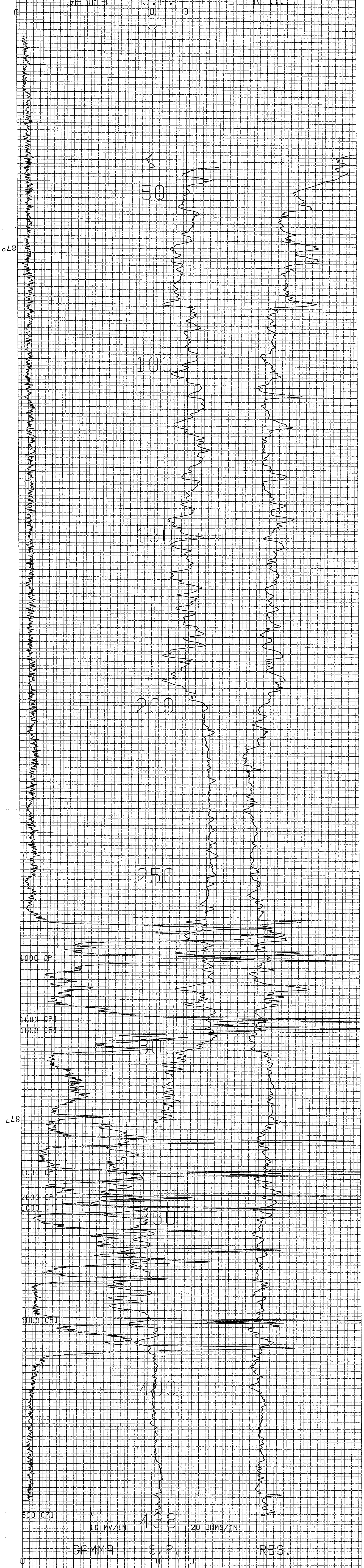




3364-6 EP 1177403		3-20-78		ANDERSON MINE		R.O. + mud	
COMPANY MINERALS EXPLORATION				COUNT YAVAPAI		SECURITY	
BORE HOLE AM 748				STATE ARIZONA		RESISTIVITY	
AREA ANDERSON MINE				COUNT MINERALS EXPLOR		OPERATOR M. DODGE	
COUNT YAVAPAI				DATE 3-20-78		UNIT NO. 7750	
SECTION		TOWNSHIP		RANGE		LOCATION	
				LOG MEASURED FROM GROUND LEVEL		WICKENBURG, AZ.	
INITIAL RUN				GAMMA BEAMS (initial run - alternate)			
T.D. LOGGED 438'		SCALE		SCALE		SCALE	
= Cpt. Per In.		= Cpt. Per In.		= Cpt. Per In.		= Cpt. Per In.	
GAMMA SCALE		LOGGING SPEED		LOGGING SPEED		LOGGING SPEED	
500 Cpt. Per In.		Ft./Min.		Ft./Min.		Ft./Min.	
TIME CONSTANT		FROM		FROM		FROM	
60 Sec.		Ft.		Ft.		Ft.	
CALIBRATION & PROBE DATA				TOTAL			
LOGGING SPEED		Ft./Min.		Ft.		Ft.	
PROBE		Ft.		Ft.		Ft.	
SOURCE NO.				TOTAL			
SOURCE VALUE		TOTAL		TOTAL		TOTAL	
PROBE NO.		PROBE SIZE		PROBE NO.		PROBE SIZE	
9855-23		1 7/8 In.		9855-23		1 7/8 In.	
DETECTOR		TYPE & SIZE		DETECTOR		TYPE & SIZE	
NAI SCINT. KRM		18" x 4"		NAI SCINT. KRM		18" x 4"	
COUNT RATE		K/SEC.		COUNT RATE		K/SEC.	
1.05 USEC.		5.58 x 10 ⁻⁶		1.05 USEC.		5.58 x 10 ⁻⁶	
WATER FACTOR		AIR FACTOR		WATER FACTOR		AIR FACTOR	
1.135		1.00		1.135		1.00	
REL. SCALE		20 ohm per 1 inch		REL. SCALE		20 ohm per 1 inch	
S.P.		10 Mv/in.		S.P.		10 Mv/in.	
SELF POTENTIAL				DENSITY			
+ -				+ -			
NATURAL GAMMA RAY COUNTS PER SECOND				RESISTANCE OHMS			

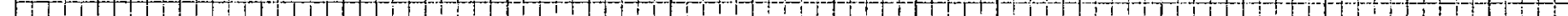
[illegible]

COMPU LOG V2.5L4	DATE 03-20-78	HALE #AM 748
COMM	S P	BES



AM 748

MIKE DODGE

[illegible]

PRE-CODE CALCULATION

LINE GRADE CALCULATION
DEPTH SCALE = 5 FEET/INCH

260

1.5 FT / 0.040 %

2.0 FT / 0.044 %

Year	Number of people
1990	100
1991	90
1992	95
1993	90
1994	95
1995	90
1996	95
1997	90
1998	95
1999	90
2000	95

A cross-section diagram of a road. The road has a central paved area and two shoulders. The right shoulder is labeled with a width of 2.0 FT / 0.070 m. The diagram shows the road's profile with a slight dip in the center and a slight rise on the shoulders.

A large grid for drawing a picture related to the problem. The grid is 20 units wide and 10 units high. A small, irregular shape is drawn in the top-left corner, consisting of several connected squares.

4.5 FT / 0.062 ft

A large grid for drawing a picture, consisting of 20 columns and 10 rows of squares.

A large grid for drawing a picture, consisting of 20 columns and 10 rows of small squares. The grid is empty, with a vertical line separating it from the text area on the left.

A blank sheet of graph paper with a grid pattern. The grid consists of small squares, with a larger square area defined by a double-line border on the left side, likely intended for writing labels or notes.

1.0 FT / 0.094 %

Year	Number of people in the workforce (in millions)
1970	55
1975	65
1980	60
1985	70
1990	80
1995	85
2000	85

1.5 FT / 0.097 %

Year	Percentage of population aged 65 and over
1970	10
1980	12
1990	15
2000	18
2010	22


± 0.5 FT / 0.095 m

1.0 FT / 0.048 x

1.0 FT / 0.033 s

1.0 FT / 0.033 s

1 0.15 FT / 0.090 %




T = 1.5 FT / 0.069 s

1.5 FT / 0.045 x

395
 .02 ± .003 INCH
 395/5005 11550378 0.005

CONVERGENCE FACTOR = 0.980

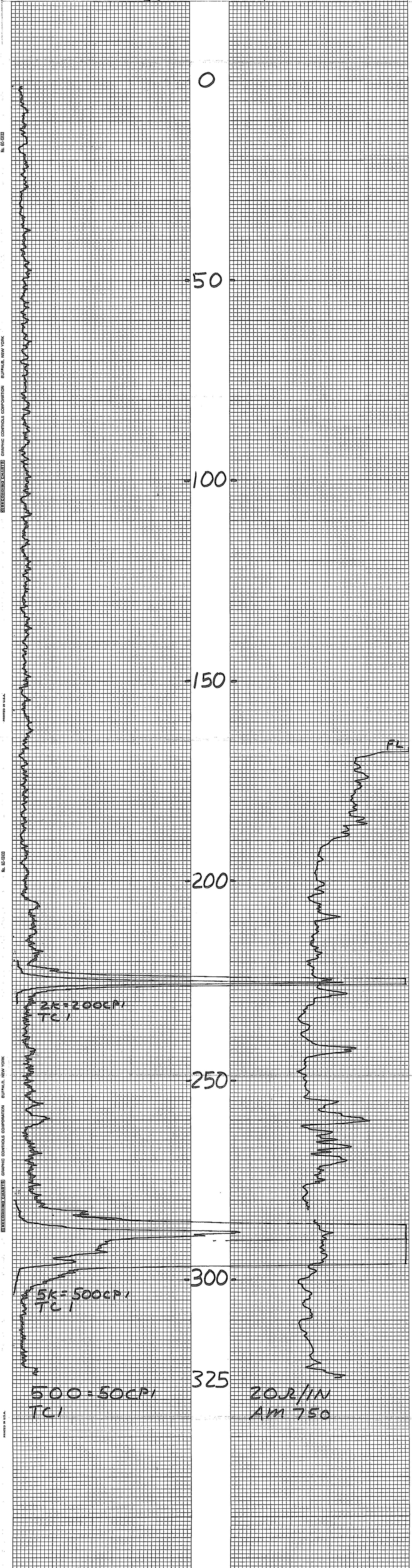


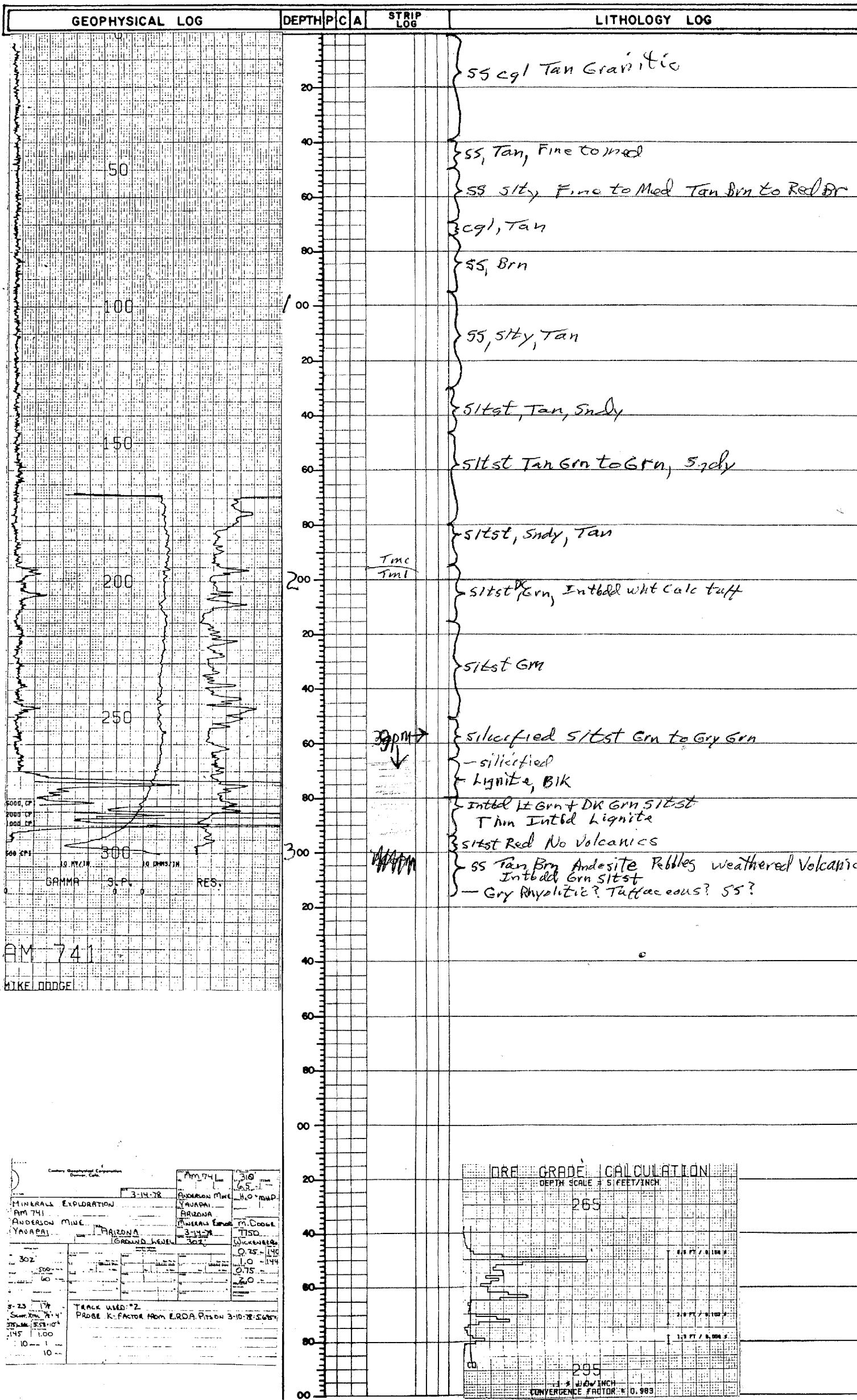
MINERALS EXPLORATION CO.

CASPER, WYOMING

HOLE NO. AM 750

LOCATION ANDERSON MINE				GAMMA SCALE	500=50CP1
COUNTY YAVAPAI STATE AZ				PROBE TYPE	SCINT
GP.				K-FACTOR	6.00E-5
ELEV.				DEAD TIME	9.2MS
SEC. TWP. RGE.				TIME CONSTANT	1
DATE	3-16-78			PROBE DIA.	1 5/8
DEPTH DRILLED	325			CALIPER	-
DEPTH LOGGED	325			DIRECTIONAL SURVEY	-
FOOTAGE LOGGED				TEMPERATURE	-
HOLE DIAMETER	6			OPERATOR	ERICKSON
WATER FACTOR	1.2			DRILLER	ED
RESISTIVITY	20 OHMS/INCH			CONTRACTOR	VENTURE
SELF POTENTIAL	- M.V./IN.			LAST A.E.C. PIT RUN	2-24-78
RERUNS	1ST. RUN	2ND. RUN	3RD. RUN	FLUID LEVEL	168
BOTTOM	300	230		REMARKS:	
TOP	280	220			
TOTAL FEET	20	10			
SCALE RUN	5K	2K			





[illegible]

PROJECT ANDERSON MINE HOLE SIZE _____ ☐ AIR ☐ WATER HOLE NO. 743
ELEVATION _____ NORTH _____ EAST _____ LOGGED BY K. TAYLOR DATE 3/7/78
SECTION _____ TOWNSHIP _____ RANGE _____ T.D. 105 P.D. _____

GEOPHYSICAL LOG		DEPTH	P	C	A	STRIP LOG	LITHOLOGY LOG		
<div><div></div><div>500 = 50 EPI TC</div></div>	<div>50</div> <div>102</div> <div>APM 743</div>	0					olive green mudstone, white calc silty ls zones		
		20							grey calc mudst.
		40							
		60						white silty ls (?)	
		80						brown red sandy mudstone	
		100							
		120							
		140							
		160							
		180							
200									
220									
240									
260									
280									
300									
320									
340									
360									
380									
400									
420									
440									
460									
480									
500									

MINERALS EXPLORATION CO.

CASPER, WYOMING

LOCATION ANDERSON MINE

COUNTY YAVAPAL STATE AZ

SP. REV.

DATE 7-2-78

WELL DEPTH 125

WELL LOGGED 122

WELL DIAMETER 6

WATER FACTOR -

RESISTIVITY -

NO. POTENTIAL -

DEPTH

1ST. RUN

2ND. RUN

3RD. RUN

4TH. RUN

5TH. RUN

6TH. RUN

7TH. RUN

8TH. RUN

9TH. RUN

10TH. RUN

11TH. RUN

12TH. RUN

13TH. RUN

14TH. RUN

15TH. RUN

16TH. RUN

17TH. RUN

18TH. RUN

19TH. RUN

20TH. RUN

21TH. RUN

22TH. RUN

23TH. RUN

24TH. RUN

25TH. RUN

26TH. RUN

27TH. RUN

28TH. RUN

29TH. RUN

30TH. RUN

31TH. RUN

32TH. RUN

33TH. RUN

34TH. RUN

35TH. RUN

36TH. RUN

37TH. RUN

38TH. RUN

39TH. RUN

40TH. RUN

41TH. RUN

42TH. RUN

43TH. RUN

44TH. RUN

45TH. RUN

46TH. RUN

47TH. RUN

48TH. RUN

49TH. RUN

50TH. RUN

51TH. RUN

52TH. RUN

53TH. RUN

54TH. RUN

55TH. RUN

56TH. RUN

57TH. RUN

58TH. RUN

59TH. RUN

60TH. RUN

61TH. RUN

62TH. RUN

63TH. RUN

64TH. RUN

65TH. RUN

66TH. RUN

67TH. RUN

68TH. RUN

69TH. RUN

70TH. RUN

71TH. RUN

72TH. RUN

73TH. RUN

74TH. RUN

75TH. RUN

76TH. RUN

77TH. RUN

78TH. RUN

79TH. RUN

80TH. RUN

81TH. RUN

82TH. RUN

83TH. RUN

84TH. RUN

85TH. RUN

86TH. RUN

87TH. RUN

88TH. RUN

89TH. RUN

90TH. RUN

91TH. RUN

92TH. RUN

93TH. RUN

94TH. RUN

95TH. RUN

96TH. RUN

97TH. RUN

98TH. RUN

99TH. RUN

100TH. RUN

101TH. RUN

102TH. RUN

103TH. RUN

104TH. RUN

105TH. RUN

106TH. RUN

107TH. RUN

108TH. RUN

109TH. RUN

110TH. RUN

111TH. RUN

112TH. RUN

113TH. RUN

114TH. RUN

115TH. RUN

116TH. RUN

117TH. RUN

118TH. RUN

119TH. RUN

120TH. RUN

121TH. RUN

122TH. RUN

123TH. RUN

124TH. RUN

125TH. RUN

126TH. RUN

127TH. RUN

128TH. RUN

129TH. RUN

130TH. RUN

131TH. RUN

132TH. RUN

133TH. RUN

134TH. RUN

135TH. RUN

136TH. RUN

137TH. RUN

138TH. RUN

139TH. RUN

140TH. RUN

141TH. RUN

142TH. RUN

143TH. RUN

144TH. RUN

145TH. RUN

146TH. RUN

147TH. RUN

148TH. RUN

149TH. RUN

150TH. RUN

151TH. RUN

152TH. RUN

153TH. RUN

154TH. RUN

155TH. RUN

156TH. RUN

157TH. RUN

158TH. RUN

159TH. RUN

160TH. RUN

161TH. RUN

162TH. RUN

163TH. RUN

164TH. RUN

165TH. RUN

166TH. RUN

167TH. RUN

168TH. RUN

169TH. RUN

170TH. RUN

171TH. RUN

172TH. RUN

173TH. RUN

174TH. RUN

175TH. RUN

176TH. RUN

177TH. RUN

178TH. RUN

179TH. RUN

180TH. RUN

181TH. RUN

182TH. RUN

183TH. RUN

184TH. RUN

185TH. RUN

186TH. RUN

187TH. RUN

188TH. RUN

189TH. RUN

190TH. RUN

191TH. RUN

192TH. RUN

193TH. RUN

194TH. RUN

195TH. RUN

196TH. RUN

197TH. RUN

198TH. RUN

199TH. RUN

200TH. RUN

201TH. RUN

202TH. RUN

203TH. RUN

204TH. RUN

205TH. RUN

206TH. RUN

207TH. RUN

208TH. RUN

209TH. RUN

210TH. RUN

211TH. RUN

212TH. RUN

213TH. RUN

214TH. RUN

215TH. RUN

216TH. RUN

217TH. RUN

218TH. RUN

219TH. RUN

220TH. RUN

221TH. RUN

222TH. RUN

223TH. RUN

224TH. RUN

225TH. RUN

226TH. RUN

227TH. RUN

228TH. RUN

229TH. RUN

230TH. RUN

231TH. RUN

232TH. RUN

233TH. RUN

234TH. RUN

235TH. RUN

236TH. RUN

237TH. RUN

238TH. RUN

239TH. RUN

240TH. RUN

241TH. RUN

242TH. RUN

243TH. RUN

244TH. RUN

245TH. RUN

246TH. RUN

247TH. RUN

248TH. RUN

249TH. RUN

250TH. RUN

251TH. RUN

252TH. RUN

253TH. RUN

254TH. RUN

255TH. RUN

256TH. RUN

257TH. RUN

258TH. RUN

259TH. RUN

260TH. RUN

261TH. RUN

262TH. RUN

263TH. RUN

264TH. RUN

265TH. RUN

266TH. RUN

267TH. RUN

268TH. RUN

26

MINERALS EXPLORATION CO.				HOLE NO. <u>Am 743</u>	
JASPER, WYOMING					
LOCATION <u>ANDERSON, MINA</u>				HAMMA SCALE <u>500-750</u>	
COUNTY <u>YAVAPAI</u> STATE <u>AZ</u>				PHONE TYPE <u>SCINT</u>	
SP. <u>ELV.</u>				F FACTOR <u>6.00E-3</u>	
				DEAD TIME <u>9.641</u>	
				TIME CONSTANT <u>1</u>	
RC <u>TYPE</u> <u>BOL</u>				PHONE DIAL <u>124</u>	
DATE <u>2-2-78</u>				CALIPER <u>—</u>	
4FT# DRILLED <u>125</u>				DIRECTIONAL SURVEY <u>—</u>	
4FT# LOGGED <u>102</u>				TEMPERATURE <u>—</u>	
DISTANCE LOGGING <u>—</u>				OPERATOR <u>ERICKSON</u>	
CORA DIAMETER <u>G</u>				DRILLER <u>ED</u>	
WATER FLOW <u>—</u>				CONTRACTOR <u>HEATHING</u>	
SISTIVITY <u>—</u> OHMS/INCH				LAST A.C. FT RUN <u>6-4-78</u>	
R/P POTENTIAL <u>—</u> M.V./IN				FLUID LEVEL <u>—</u>	
BRUINS		1ST. RUN	2ND. RUN	3RD. RUN	REMARKS:
OFTON					
OF					
OTAL FEET					
CALS RUN					

GEOPHYSICAL LOG			DEPTH	P	C	A	STRIP LOG	LITHOLOGY LOG
			20					SS, Tan
			40					siltst, Grn
			60					silicified siltst, Grn, Gry Chert
			80					mdst, Grn
			100					silicified siltst, Grn, Grn + Gry Chert
			120					Andesitic Volcanics, Gry Brn
			140					
			160					
			180					
			200					
			220					
			240					
			260					
			280					
			300					
			320					
			340					
			360					
			380					
			400					
			420					
			440					
			460					
			480					
			500					
			520					
			540					
			560					
			580					
			600					
			620					
			640					
			660					
			680					
			700					
			720					
			740					
			760					
			780					
			800					
			820					
			840					
			860					
			880					
			900					
			920					
			940					
			960					
			980					
			1000					

Century Geophysical Corporation
Denver, Colo.

AM 744
3-16-78
ANDERSON MINE
YAVAPAI
ARIZONA
MINERALS EXPLORATION
MIKE DODGE
GROUND LEVEL 98'

100
5/11
1150
225 - 100
0.5
0.75
100
20
10

TRACE USED: #1
PROB. C-THOR FROM E.R.O.A. PHS 3-10-78. S.W.S. 10"
RIG: HARRIS (UEN)

GEOPHYSICAL LOG		DEPTH	P	C	A	STRIP LOG	LITHOLOGY LOG
		0					red brown silt, sand, gravel
		20					
		40					
		60					hard silty olive green mudstone, interbedded white calcareous layers, silicified zones orange chert frags
		80					
		100					
		120					red brown sandy siltstone redish purple sandy siltstone, andesite frags
		140					
		160					
		180					
200							
220							
240							
260							
280							
300							
320							
340							
360							
380							
400							
420							
440							
460							
480							
500							

MINERALS EXPLORATION CO.

ASPER, WYOMING

HOLE NO. AM 745

LOCATION	<u>ANDERSON MINE</u>		GAUGING SCALE	<u>500-5000</u>
COUNTY	<u>YAVAPAI STATE AZ.</u>		PROBE TYPE	<u>SCINT</u>
IP.	<u>BLVD.</u>		REACTOR	<u>GOODES</u>
IC.	TWP.	DOB.	DRAD TIME	<u>9.2 sec</u>
ATE	<u>3-7-78</u>		TIME CONSTANT	<u>1</u>
DEPTH DRILLED	<u>725</u>		PROBE DIA.	<u>1 1/2</u>
DEPTH LOGGED	<u>118</u>		CALIBER	<u>-</u>
DOTAGE LOGGED	<u>67</u>		DIRECTIONAL SURVEY	<u>-</u>
LOG QUALITY	<u>67</u>		TEMPERATURE	<u>-</u>
WATER FACTOR	<u>-</u>		OPERATOR	<u>ERICKSON</u>
RESISTIVITY	<u>-</u>		CONTRACTOR	<u>ERICKSON</u>
TEMPERATURE	<u>-</u>		LAST A.S.C. PT. RUN	<u>2-24-78</u>
FLUID LEVEL	<u>-</u>		REMARKS	
1ST RUN	2ND RUN	3RD RUN		
4TH RUN	5TH RUN	6TH RUN		
7TH RUN	8TH RUN	9TH RUN		
10TH RUN	11TH RUN	12TH RUN		

PROJECT ANDE-ESON MINE

HOLE SIZE

☒ AIR ☐ WATER

HOLE NO. AM 746

ELEVATION _____

NORTH _____

EAST _____

LOGGED BY K. TAYLOR DATE 4/2/77

SECTION _____

TOWNSHIP _____

RANGE _____

T.D. 220 P.D. _____

HARRIS

[illegible]

GEOPHYSICAL LOG		DEPTH	P	C	A	STRIP LOG	LITHOLOGY LOG	
		0					silicified siltst, Gvy, Gvy Chert Wht Calc Tuff	
		20						
		40						silicified siltst Gvy to Gvy Grn Gvy + Brn Chert
		60						siltst, DK Grn
		80						Carbonaceous siltst DK Grn to DK Gvy w/Thin lignite Layers
		100						siltst Red Brn weathered Andesite Frags
		120						
		140						
		160						
		180						
		200						
		220						
		240						
		260						
		280						
		300						
		320						
		340						
		360						
		380						
		400						
		420						
		440						
		460						
		480						
		500						
		520						
		540						
		560						
		580						
		600						
		620						
		640						
		660						
		680						
		700						
		720						
		740						
		760						
		780						
		800						
		820						
		840						
		860						
		880						
		900						
		920						
		940						
		960						
		980						
		1000						
		1020						
		1040						
		1060						
		1080						
		1100						
		1120						
		1140						
		1160						
		1180						
		1200						
		1220						
		1240						
		1260						
		1280						
		1300						
		1320						
		1340						
		1360						
		1380						
		1400						
		1420						
		1440						
		1460						
		1480						
		1500						
		1520						
		1540						
		1560						
		1580						
		1600						
		1620						
		1640						
		1660						
		1680						
		1700						
		1720						
		1740						
		1760						
		1780						
		1800						
		1820						
		1840						
		1860						
		1880						
		1900						
		1920						
		1940						
		1960						
		1980						
		2000						
		2020						
		2040						
		2060						
		2080						
		2100						
		2120						
		2140						
		2160						
		2180						
		2200						
		2220						
		2240						
		2260						
		2280						
		2300						
		2320						
		2340						
		2360						
		2380						
		2400						
		2420						
		2440						
		2460						
		2480						
		2500						
		2520						
		2540						
		2560						
		2580						
		2600						
		2620						
		2640						
		2660						
		2680						
		2700						
		2720						
		2740						
		2760						
		2780						
		2800						
		2820						
		2840						
		2860						
		2880						
		2900						
		2920						
		2940						
		2960						
		2980						
		3000						
		3020						
		3040						
		3060						
		3080						
		3100						
		3120						
		3140						
		3160						
		3180						
		3200						
		3220						
		3240						
		3260						
		3280						
		3300						
		3320						
		3340						
		3360						
		3380						
		3400						
		3420						
		3440						
		3460						
		3480						
		3500						
		3520						
		3540						
		3560						
		3580						
		3600						
		3620						
		3640						
		3660						
		3680						
		3700						
		3720						
		3740						
		3760						
		3780						
		3800						
		3820						
		3840						
		3860						
		3880						
		3900						
		3920						
		3940						
		3960						
		3980						
		4000						
		4020						
		4040						
		4060						
		4080						
		4100						
		4120						
		4140						
		4160						
		4180						
		4200						
		4220						
		4240						
		4260						
		4280						
		4300						
		4320						
		4340						
		4360						
		4380						
		4400						
		4420						
		4440						
		4460						
		4480						
		4500						
		4520						
		4540						
		4560						
		4580						
		4600						
		4620						
		4640						
		4660						
		4680						
		4700						
		4720						
		4740						
		4760						
		4780						
		4800						
		4820						
		4840						
		4860						
		4880						
		4900						
		4920						
		4940						
		4960						
		4980						
		5000						
		5020						
		5040						
		5060						
		5080						
		5100						
		5120						
		5140						
		5160						
		5180						
		5200						
		5220						
		5240						
		5260						
		5280						
		5300						
		5320						
		5340						
		5360						
		5380						
		5400						
		5420						
		5440						
		5460						
		5480						
		5500						
		5520						
		5540						
		5560						
		5580						
		5600						
		5620						
		5640						
		5660						
		5680						
		5700						
		5720						
		5740						
		5760						
		5780						
		5800						
		5820						
		5840						
		5860						
		5880						
		5900						
		5920						
		5940						
		5960						
		5980						
		6000						
		6020						
		6040						
		6060						
		6080						
		6100						
		6120						
		6140						
		6160						
		6180						
		6200						
		6220						
		6240						
		6260						
		6280						
		6300						
		6320						
		6340						
		6360						
		6380						
		6400						
		6420						
		6440						
		6460						
		6480						
		6500						
		6520						
		6540						
		6560						
		6580						
		6600						
		6620						
		6640						
		6660						
		6680						
		6700						
		6720						
		6740						
		6760						
		6780						
		6800						
		6820						
		6840						
		6860						
		6880						
		6900						
		6920						
		6940						
		6960						
		6980						
		7000						

PROJECT _____ HOLE SIZE _____ ~~WATER~~ WATER HOLE NO. 1111 148
ELEVATION _____ NORTH 1205 ~~300~~ EAST _____ LOGGED BY LUCHT DATE 20 MAR 78
SECTION 11 TOWNSHIP 11 N RANGE 10 W T.D. 440 P.D. _____

ELEVATION _____

NORTH 1209

EAST

LOGGED BY LA 191

DATE 20 JUL 10

SECTION 11

TOWNSHIP 11 N

RANGE 10 u

T.D. 770

P. D. _____

GEOPHYSICAL LOG

DEPTH

P C A

STRIP LOG

LITHOLOGY LOG

0-50 BROWN CONG.

50-215 RUSTY RED SAND

215-265 BROWN SILTY CLAY

265-300 DK GRAY SHALE AND BLACK LIGNITIC SHALE

300-365 DARK GRAY CARBONACEOUS SILT

365-395 OLIVE GREEN CLAY

395-405 BROWN CLAY

405-430 ANDESITIC AGGLOM.

430-440 ANDESITE

ORE GRADE CALCULATION

DEPTH SCALE = 5 FEET/INCH

260

250

200

150

100

50

0

500 CP

1000 CP

2000 CP

3000 CP

4000 CP

5000 CP

6000 CP

7000 CP

8000 CP

9000 CP

10000 CP

11000 CP

12000 CP

13000 CP

14000 CP

15000 CP

16000 CP

17000 CP

18000 CP

19000 CP

20000 CP

21000 CP

22000 CP

23000 CP

24000 CP

25000 CP

26000 CP

27000 CP

28000 CP

29000 CP

30000 CP

31000 CP

32000 CP

33000 CP

34000 CP

35000 CP

36000 CP

37000 CP

38000 CP

39000 CP

40000 CP

41000 CP

42000 CP

43000 CP

44000 CP

45000 CP

46000 CP

47000 CP

48000 CP

49000 CP

50000 CP

51000 CP

52000 CP

53000 CP

54000 CP

55000 CP

56000 CP

57000 CP

58000 CP

59000 CP

60000 CP

61000 CP

62000 CP

63000 CP

64000 CP

65000 CP

66000 CP

67000 CP

68000 CP

69000 CP

70000 CP

71000 CP

72000 CP

73000 CP

74000 CP

75000 CP

76000 CP

77000 CP

78000 CP

79000 CP

80000 CP

81000 CP

82000 CP

83000 CP

84000 CP

85000 CP

86000 CP

87000 CP

88000 CP

89000 CP

90000 CP

91000 CP

92000 CP

93000 CP

94000 CP

95000 CP

96000 CP

97000 CP

98000 CP

99000 CP

100000 CP

101000 CP

102000 CP

103000 CP

104000 CP

105000 CP

106000 CP

107000 CP

108000 CP

109000 CP

110000 CP

111000 CP

112000 CP

113000 CP

114000 CP

115000 CP

116000 CP

117000 CP

118000 CP

119000 CP

120000 CP

121000 CP

122000 CP

123000 CP

124000 CP

125000 CP

126000 CP

127000 CP

128000 CP

129000 CP

130000 CP

131000 CP

132000 CP

133000 CP

134000 CP

135000 CP

136000 CP

137000 CP

138000 CP

139000 CP

140000 CP

141000 CP

142000 CP

143000 CP

144000 CP

145000 CP

146000 CP

147000 CP

148000 CP

149000 CP

150000 CP

151000 CP

152000 CP

153000 CP

154000 CP

155000 CP

156000 CP

157000 CP

158000 CP

159000 CP

160000 CP

161000 CP

162000 CP

163000 CP

164000 CP

165000 CP

166000 CP

167000 CP

168000 CP

169000 CP

170000 CP

171000 CP

172000 CP

173000 CP

174000 CP

175000 CP

176000 CP

177000 CP

178000 CP

179000 CP

180000 CP

181000 CP

182000 CP

183000 CP

184000 CP

185000 CP

186000 CP

187000 CP

188000 CP

189000 CP

190000 CP

191000 CP

192000 CP

193000 CP

194000 CP

195000 CP

196000 CP

197000 CP

198000 CP

199000 CP

200000 CP

201000 CP

202000 CP

203000 CP

204000 CP

205000 CP

206000 CP

207000 CP

208000 CP

209000 CP

210000 CP

211000 CP

212000 CP

213000 CP

214000 CP

215000 CP

216000 CP

217000 CP

218000 CP

219000 CP

220000 CP

221000 CP

222000 CP

223000 CP

224000 CP

225000 CP

226000 CP

227000 CP

228000 CP

229000 CP

230000 CP

231000 CP

232000 CP

233000 CP

234000 CP

235000 CP

236000 CP

237000 CP

238000 CP

239000 CP

240000 CP

241000 CP

242000 CP

243000 CP

244000 CP

245000 CP

246000 CP

247000 CP

248000 CP

249000 CP

250000 CP

251000 CP

252000 CP

253000 CP

254000 CP

255000 CP

256000 CP

257000 CP

258000 CP

259000 CP

260000 CP

261000 CP

262000 CP

263000 CP

264000 CP

265000 CP

266000 CP

267000 CP

268000 CP

269000 CP

270000 CP

271000 CP

272000 CP

273000 CP

274000 CP

275000 CP

276000 CP

277000 CP

278000 CP

279000 CP

280000 CP

281000 CP

282000 CP

283000 CP

284000 CP

285000 CP

286000 CP

287000 CP

288000 CP

289000 CP

290000 CP

291000 CP

292000 CP

293000 CP

294000 CP

295000 CP

296000 CP

297000 CP

298000 CP

299000 CP

300000 CP

301000 CP

302000 CP

303000 CP

304000 CP

305000 CP

306000 CP

307000 CP

308000 CP

309000 CP

310000 CP

311000 CP

312000 CP

313000 CP

314000 CP

315000 CP

316000 CP

317000 CP

318000 CP

319000 CP

320000 CP

321000 CP

322000 CP

323000 CP

324000 CP

AM 748

MIKE DODGE

395

02-1/2 INCH
CONVERGENCE FACTOR = 0.980

[illegible]

VENTURE

LITHOLOGY LOG



TD-325

MINERALS EXPLORATION CO