



CONTACT INFORMATION
Mining Records Curator
Arizona Geological Survey
3550 N. Central Ave, 2nd floor
Phoenix, AZ, 85012
602-771-1601
<http://www.azgs.az.gov>
inquiries@azgs.az.gov

The following file is part of the Anderson Mine Collection

ACCESS STATEMENT

These digitized collections are accessible for purposes of education and research. We have indicated what we know about copyright and rights of privacy, publicity, or trademark. Due to the nature of archival collections, we are not always able to identify this information. We are eager to hear from any rights owners, so that we may obtain accurate information. Upon request, we will remove material from public view while we address a rights issue.

CONSTRAINTS STATEMENT

The Arizona Geological Survey does not claim to control all rights for all materials in its collection. These rights include, but are not limited to: copyright, privacy rights, and cultural protection rights. The User hereby assumes all responsibility for obtaining any rights to use the material in excess of "fair use."

The Survey makes no intellectual property claims to the products created by individual authors in the manuscript collections, except when the author deeded those rights to the Survey or when those authors were employed by the State of Arizona and created intellectual products as a function of their official duties. The Survey does maintain property rights to the physical and digital representations of the works.

QUALITY STATEMENT

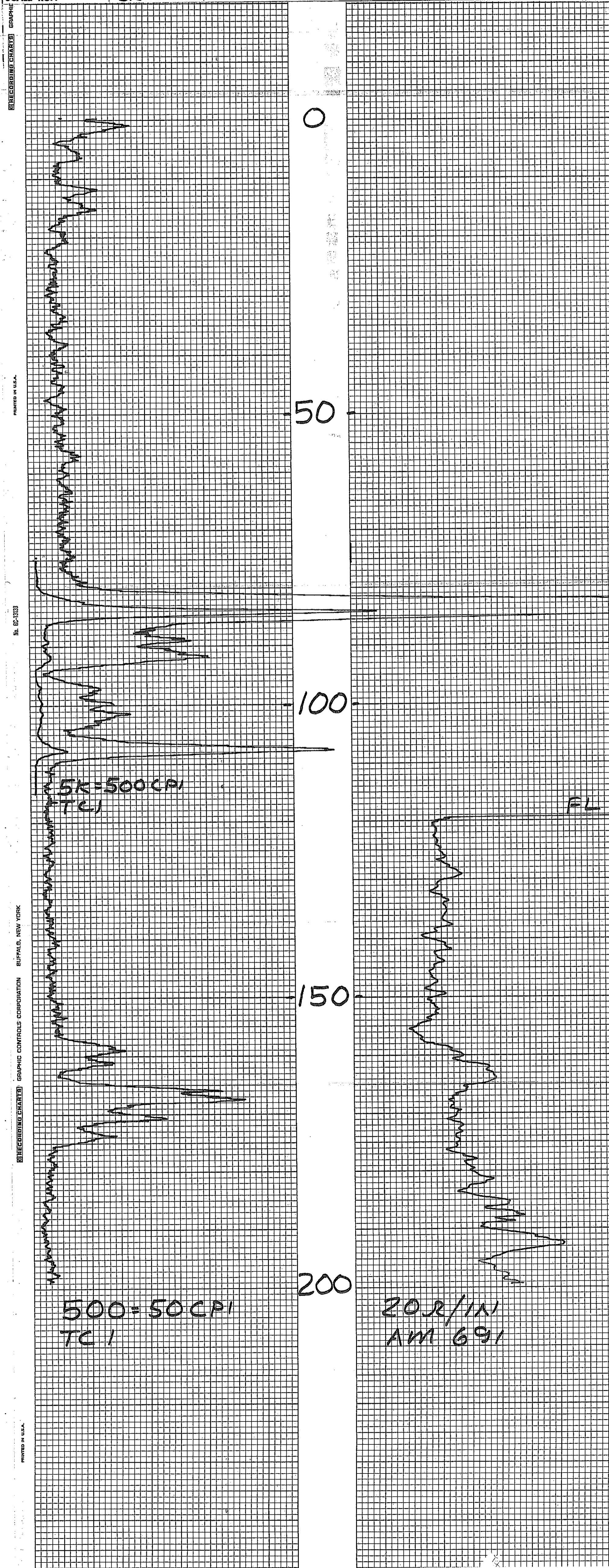
The Arizona Geological Survey is not responsible for the accuracy of the records, information, or opinions that may be contained in the files. The Survey collects, catalogs, and archives data on mineral properties regardless of its views of the veracity or accuracy of those data.

MINERALS EXPLORATION CO.

CASPER, WYOMING

HOLE NO. Am 691

LOCATION ANDERSON MINE				GAMMA SCALE	500 = 50CPI
COUNTY YAVAPAI STATE AZ				PROBE TYPE	SCINT
GP.				K-FACTOR	6.00E-5
ELEV.				DEAD TIME	9.4us
SEC.				TIME CONSTANT	1
TWP.				PROBE DIA.	1 5/8
RGE.				CALIPER	-
DATE	3-3-78			DIRECTIONAL SURVEY	-
DEPTH DRILLED	200			TEMPERATURE	-
DEPTH LOGGED	200			OPERATOR	ERICKSON
FOOTAGE LOGGED				DRILLER	
HOLE DIAMETER	6			CONTRACTOR	VENTURE
WATER FACTOR	1.2			LAST A.E.C. PIT RUN	2-24-78
RESISTIVITY	20 OHMS/INCH			FLUID LEVEL	120
SELF POTENTIAL	M.V./IN.				
RERUNS	1ST. RUN	2ND. RUN	3RD. RUN	REMARKS:	
BOTTOM	115				
TOP	75				
TOTAL FEET	40				
SCALE RUN	5k				

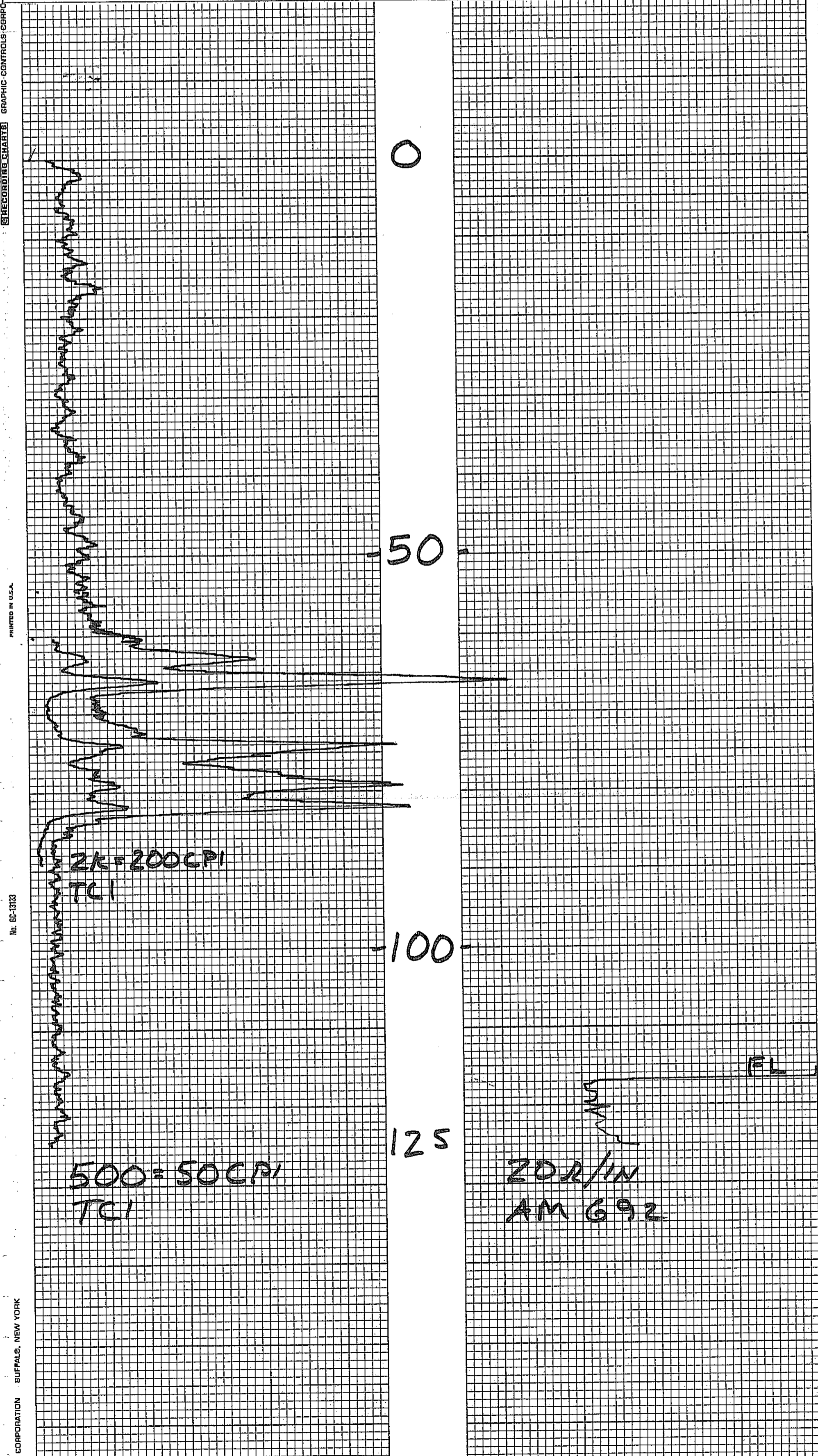


MINERALS EXPLORATION CO.

CASPER, WYOMING

HOLE NO. Am 692

LOCATION ANDERSON MINE				GAMMA SCALE	500=50CPI
COUNTY YAVAPAI STATE AZ				PROBE TYPE	SCINT
GP.				K-FACTOR	6.00E-5
ELEV.				DEAD TIME	9.2us
SEC.				TIME CONSTANT	1
TWP.				PROBE DIA.	1 5/8
RGE.				CALIPER	-
DATE	3-7-78			DIRECTIONAL SURVEY	-
DEPTH DRILLED	125			TEMPERATURE	-
DEPTH LOGGED	125			OPERATOR	ERICKSON
FOOTAGE LOGGED				DRILLER	DENNIS
HOLE DIAMETER	6			CONTRACTOR	VENTURE
WATER FACTOR	-			LAST A.E.C. PIT RUN	2-24-78
RESISTIVITY	-			FLUID LEVEL	117
SELF POTENTIAL	-			REMARKS:	
RERUNS	1ST. RUN	2ND. RUN	3RD. RUN		
BOTTOM	90				
TOP	60				
TOTAL FEET	30				
SCALE RUN	2k				

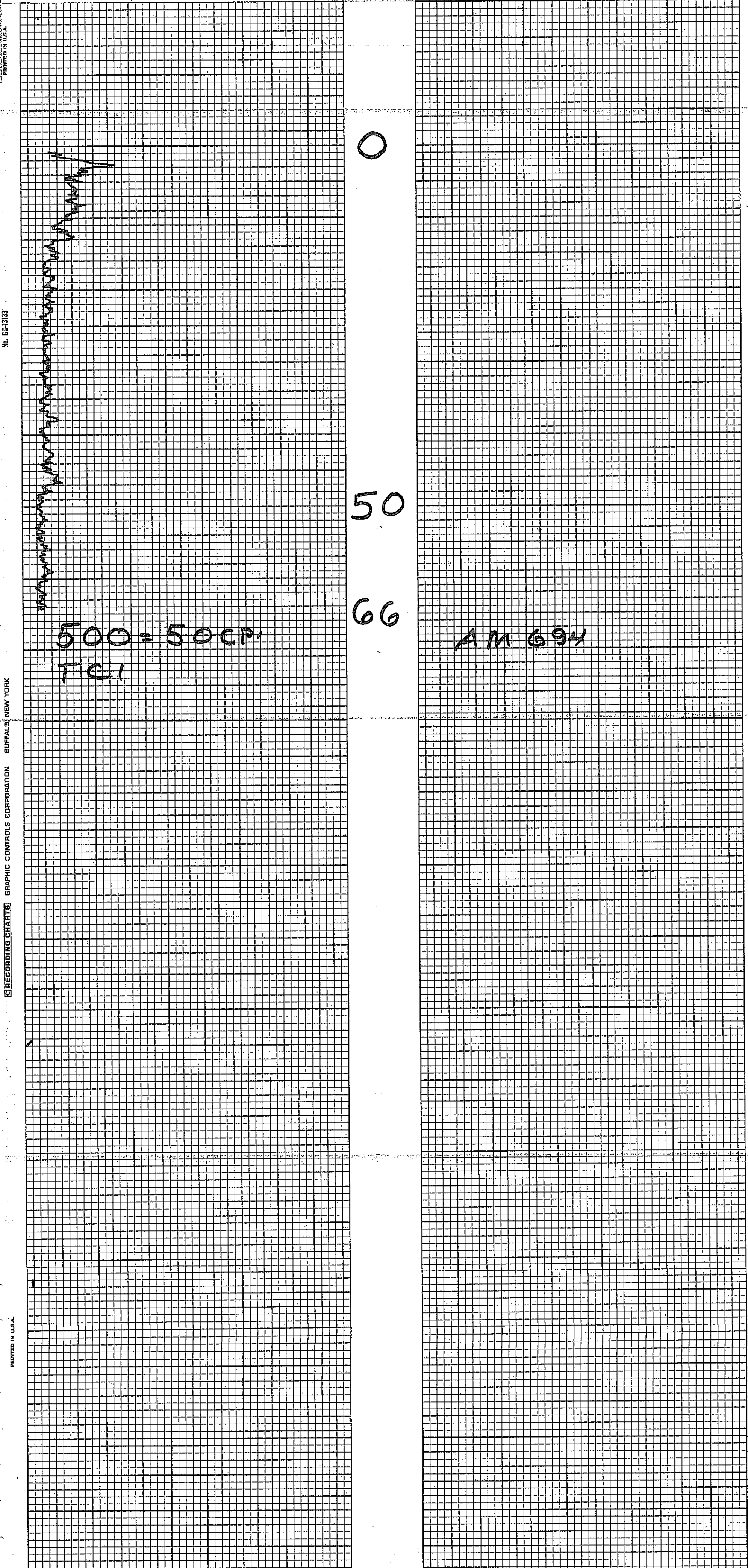


MINERALS EXPLORATION CO.

CASPER, WYOMING

HOLE NO. AM 694

LOCATION ANDERSON MINE				GAMMA SCALE	500 = 50CP1
COUNTY YAVAPAI STATE AZ				PROBE TYPE	SCINT
GP.				K-FACTOR	6.00E-5
ELEV.				DEAD TIME	9.2us
SEC.				TIME CONSTANT	1
TWP.				PROBE DIA.	1 5/8
RGE.				CALIPER	-
DATE	3-14-78			DIRECTIONAL SURVEY	-
DEPTH DRILLED	70			TEMPERATURE	-
DEPTH LOGGED	66			OPERATOR	ERICKSON
FOOTAGE LOGGED				DRILLER	DENNIS
HOLE DIAMETER	6			CONTRACTOR	VENTURE
WATER FACTOR	-			LAST A.E.C. PIT RUN	2-24-78
RESISTIVITY	-			FLUID LEVEL	-
SELF POTENTIAL	-			REMARKS:	
OHMS/INCH					
M.V./IN.					
RERUNS	1ST. RUN	2ND. RUN	3RD. RUN		
BOTTOM					
TOP					
TOTAL FEET					
SCALE RUN					



PRINTED IN U.S.A.

No. GC-1313

BUFFALO NEW YORK

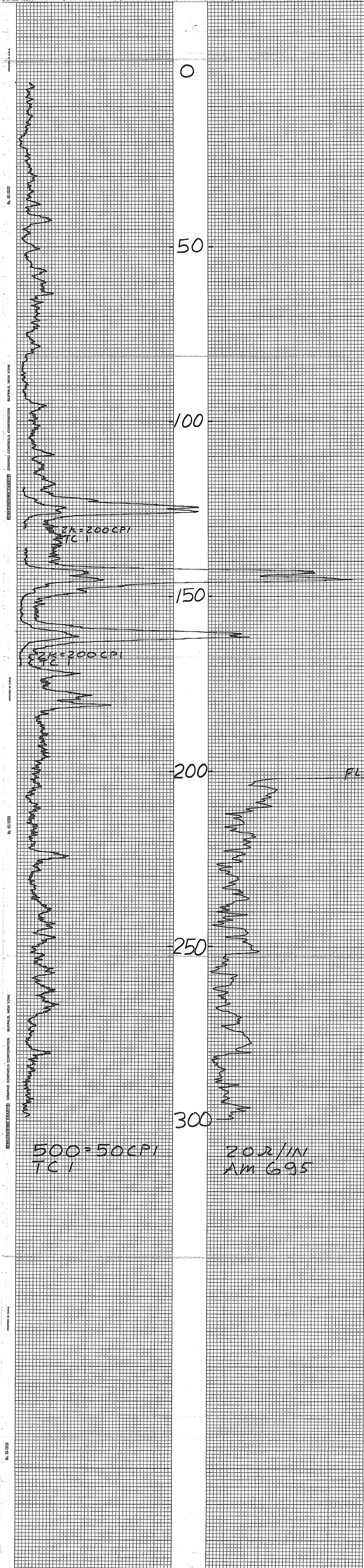
GRAPHIC CONTROLS CORPORATION

RECORDING CHARTS

PRINTED IN U.S.A.

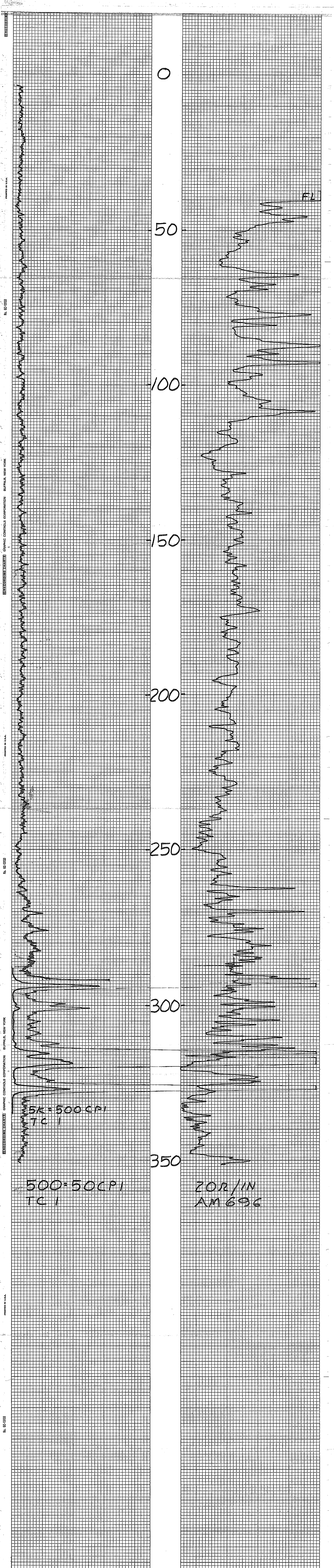
MINERALS EXPLORATION CO.

CASPER, WYOMING				HOLE NO. Am 695	
LOCATION ANDERSON MINE				GAMMA SCALE	500=50CPI
COUNTY YAVAPAI STATE AZ				PROBE TYPE	SCINT
GP.				K-FACTOR	6.00E-5
ELEV.				DEAD TIME	9.2 μs
SEC.				TIME CONSTANT	1
TWP.				PROBE DIA.	1 5/8
RGE.				CALIPER	-
DATE	3-31-78			DIRECTIONAL SURVEY	-
DEPTH DRILLED	300			TEMPERATURE	-
DEPTH LOGGED	300			OPERATOR	ERICKSON
FOOTAGE LOGGED				DRILLER	AL
HOLE DIAMETER	5 1/8			CONTRACTOR	UNIVERSAL
WATER FACTOR	1.2			LAST A.E.C. PIT RUN	2-24-78
RESISTIVITY	20 OHMS/INCH			FLUID LEVEL	202
SELF POTENTIAL	- M.V./IN.			REMARKS:	
1ST. RUN	2ND. RUN		3RD. RUN		
BOTTOM	170		130		
TOP	135		120		
TOTAL FEET	35		10		
SCALE RUN	2K		2K		



MINERALS EXPLORATION CO.

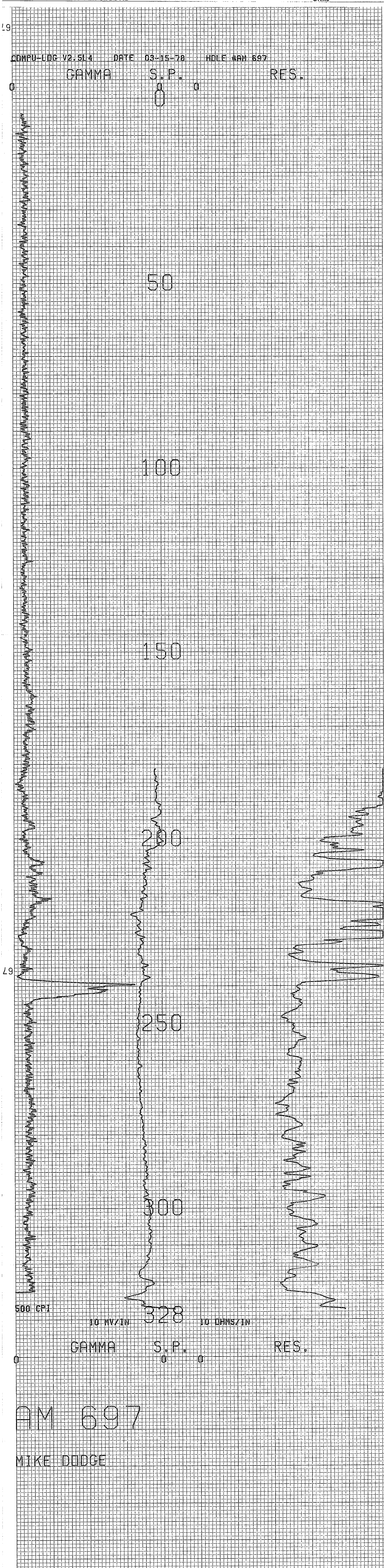
CASPER, WYOMING				HOLE NO. AM 696	
LOCATION ANDERSON MINE				GAMMA SCALE	500=50CPI
COUNTY YAVAPAI STATE AZ				PROBE TYPE	SCINT
GP.				K-FACTOR	6.3 E-5
ELEV.				DEAD TIME	9.2ms
SEC.	TWP.	RGE.		TIME CONSTANT	1
DATE	4-11-78				
DEPTH DRILLED	355				
DEPTH LOGGED	352				
FOOTAGE LOGGED					
HOLE DIAMETER	5 1/8				
WATER FACTOR	1.2				
RESISTIVITY	20		OHMS/INCH		
SELF POTENTIAL	-		M.V./IN.		
REURNS	1ST. RUN	2ND. RUN	3RD. RUN	REMARKS:	
BOTTOM	335				
TOP	290				
TOTAL FEET	45				
SCALE RUN	5K				
				OPERATOR	ERICKSON
				DRILLER	VERN
				CONTRACTOR	HARRIS
				LAST A.E.C. PIT RUN	2-24-78
				FLUID LEVEL	40



COMPANY MINERALS EXPLORATION		DATE 3-15-78		HOLE NO. AM 697		T.D. DRILLED 335'	
ORE HOLE AM 697		STATE ARIZONA		AREA ANDERSON MINE		BIT SIZE 5 1/8"	
TOWNSHIP YAVAPAI		LOG MEASURED FROM GROUND LEVEL		COUNTY YAVAPAI		BORE HOLE FLUID H2O + mud	
STATE ARIZONA		TOTAL FOOTAGE LOGGED 328'		STATION ARIZONA		CASING —	
COMPANY MINERALS EXPLOR		UNIT NO. 7750		OPERATOR M. Dodge		RESISTIVITY	
LOCATION WICKENBERG, AZ.		DRIVE 0.5		TIME IN 0830		TIME OUT 0915	
LOGGING 0.75		TOTAL 1.25		ROUNDTRIP MILEAGE		Miles	
CHARGEABLE STANDBY		Hrs.					
ROBE NO. 7055-23		PROBE SIZE 1 1/8"		TRACK USED: # 4			
DETECTOR IAI SCINT. XTAL 7/8" x 4"		K FACTOR 5.58 x 10^-6		PROBE K-FACTOR FROM E.R.D.A. PITS 3-10-78: 5.695 x 10^-6			
LEAD TIME 1.075 μsec.		AIR FACTOR 1.00					
WATER FACTOR 1.135							
ES. SCALE 10		inches 1					
F.P. 10		Mv/in. 10					

SELF POTENTIAL

DENSITY

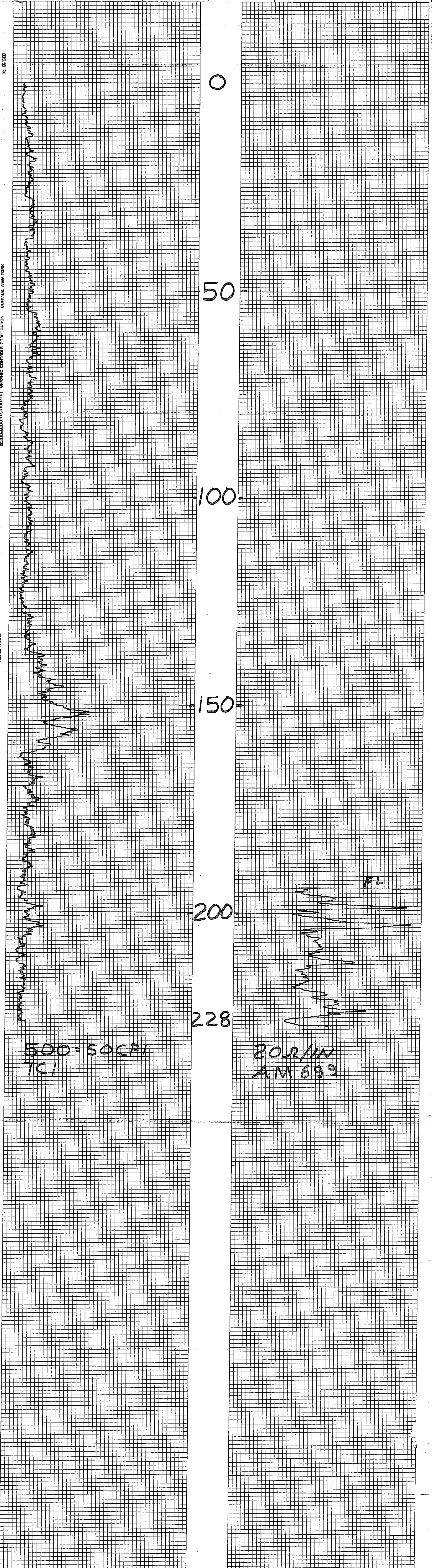
NATURAL GAMMA RAY
COUNTS PER SECONDRESISTANCE
OHMS

MINERALS EXPLORATION CO.

CASPER, WYOMING

HOLE NO. Am 699

LOCATION ANDERSON MINE				GAMMA SCALE	500=SOCP1
COUNTY YAUAPAI STATE AZ				PROBE TYPE	SCINT
GP.				K-FACTOR	6.00 E-5
ELEV.				DEAD TIME	9.2 MS
SEC. TWP. RGE.				TIME CONSTANT	1
DATE	3-15-78			PROBE DIA.	1 5/8
DEPTH DRILLED	230			CALIPER	-
DEPTH LOGGED	228			DIRECTIONAL SURVEY	-
FOOTAGE LOGGED				TEMPERATURE	-
HOLE DIAMETER	5 1/8			OPERATOR	ERICKSON
WATER FACTOR	1.2			DRILLER	FRED
RESISTIVITY	20 OHMS/INCH			CONTRACTOR	COBRA
SELF POTENTIAL	- M.V./IN.			LAST A.E.C. PIT RUN	2-24-78
RERUNS	1ST. RUN	2ND. RUN	3RD. RUN	FLUID LEVEL	194
BOTTOM				REMARKS:	
TOP					
TOTAL FEET					
SCALE RUN					



C-366-E SP 11749B		HOLE NO. Am 700		T.D. DRILLED 130	
COMPANY MINERALS EXPLORATION		SEC. Am 700		BIT SIZE 5 1/8 In. CASING —	
BORE HOLE Am 700		AREA ANDERSON MINE		BORE HOLE FLUID H₂O + mud	
AREA ANDERSON MINE		COUNTY YAVAPAI		DENSITY —	
COUNTY YAVAPAI		STATE ARIZONA		RESISTIVITY —	
SECTION GROUND LEVEL		DATE 3-16-78		OPERATOR M. DODGE	
TOWNSHIP —		TOTAL FOOTAGE LOGGED 167		UNIT NO. 7750	
RANGE —		LOCATION WICKENBERG, AZ.		DRIVE —	
INITIAL RUN		GAMMA RERUNS (Initial run offscale)		STAND BY 0.25 Hrs. 1745	
T.D. LOGGED 167'		SCALE		TIME OUT 1830	
GAMMA SCALE = 500 Cps. Per In.		T.C. — Cps. Per In. LOGGING SPEED — Ft./Min.		LOGGING 0.75 Hrs.	
TIME CONSTANT 60 Sec.		FROM — TO —		TOTAL 1.0 Hrs.	
CALIBRATION & PROBE DATA		TOTAL —		ROUNDTRIP MILEAGE — Miles	
SOURCE NO. —		TOTAL —		CHARGEABLE —	
SOURCE VALUE —		TOTAL —		STANDBY —	
PROBE NO. 9055-23		PROBE SIZE 1 7/8 In.		TRACK USED: #3	
DETECTOR NAI SCINT. XAL 7/8 x 4		K FACTOR 5.58 x 10⁻⁶		PROBE K-FACTOR FROM E.R.D.A. PITS 3-10-78: 5.685 x 10⁻⁶	
DEAD TIME 1075 μsec.		AIR FACTOR 1.00		RIG: FREDDIE	
WATER FACTOR 1.135		RES. SCALE 10 ohms per 1 inch			
S.P. 10 mV/in.					

SELF POTENTIAL

DENSITY

NATURAL GAMMA RAY
COUNTS PER SECONDRESISTANCE
OHMS

CIRCUIT=LOG V2.5L4 DATE 03-16-78 HOLE #AM 700

GAMMA

S.P.

RES.

50

100

150

167

10 MV/IN

10 OHMS/IN

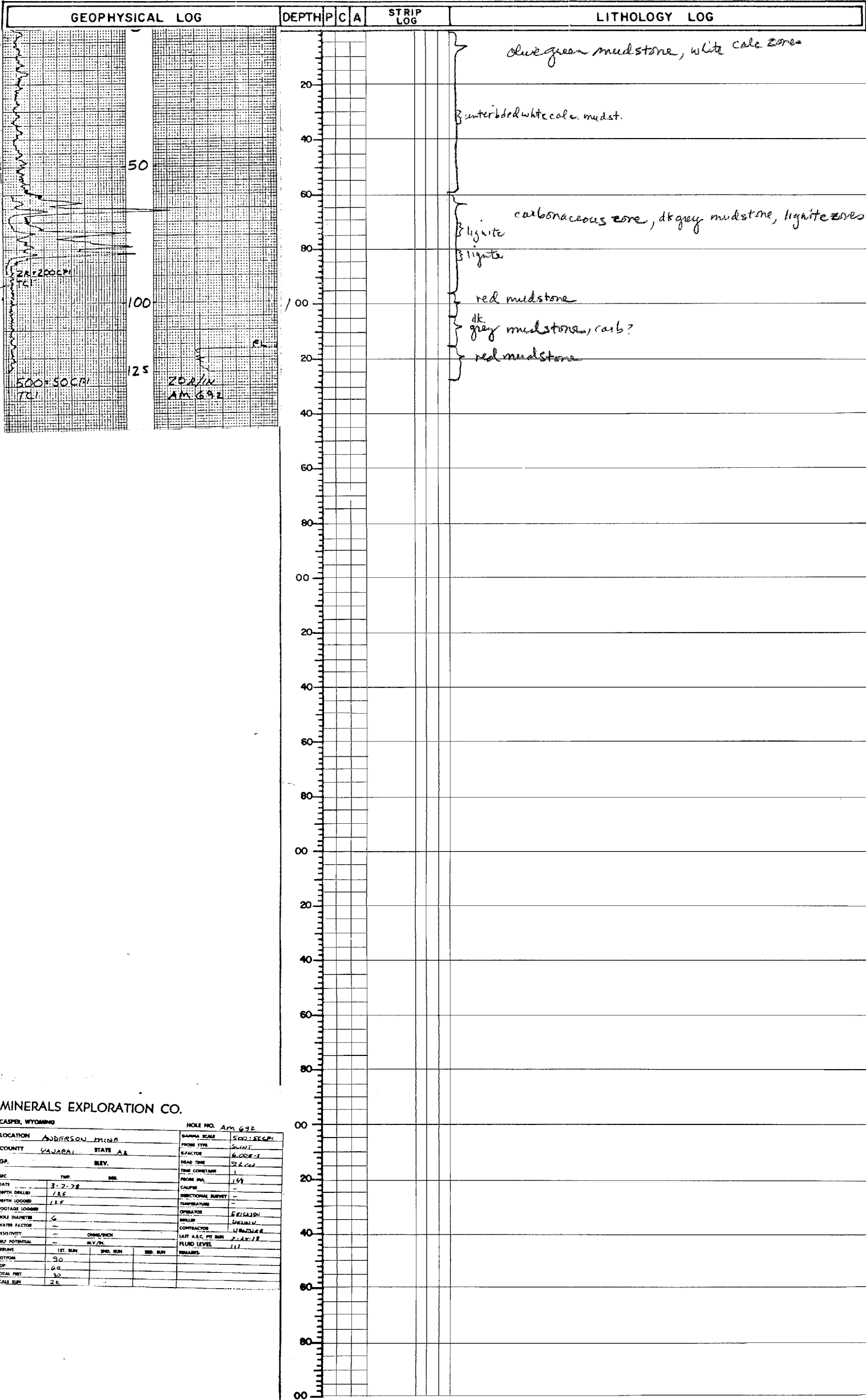
GAMMA

S.P.

RES.

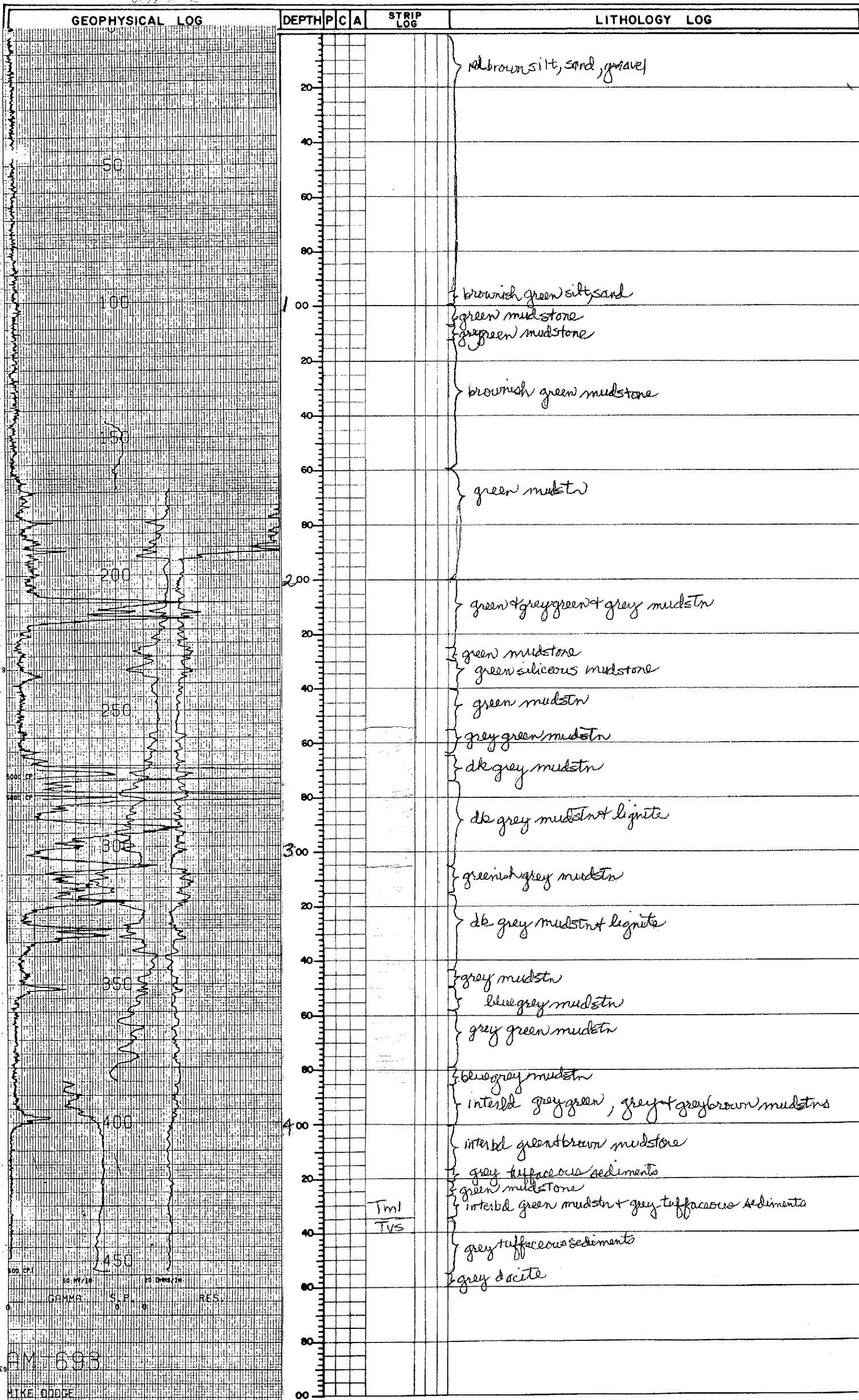
AM 700

MIKE DODGE



MINERALS EXPLORATION CO.

CASPER, WYOMING		HOLE NO. <u>Am 692</u>	
LOCATION <u>ANDERSON MINE</u>		GAMMA SCALE <u>500-5000</u>	
COUNTY <u>SARAFI</u>	STATE <u>WY</u>	PROBE TYPE <u>SCINT</u>	
GP. <u> </u>	BLEV. <u> </u>	EXACTOR <u> </u>	
SEC. <u> </u>	TWP. <u> </u>	DEAD TIME <u> </u>	
DATE <u>3-2-78</u>	REL. <u> </u>	TIME CONSTANT <u> </u>	
DEPTH DRILLED <u>125</u>		PROBE IN. <u>159</u>	
DEPTH LOGGED <u>125</u>		CALIB. <u> </u>	
FOOTAGE LOGGED <u> </u>		DIRECTIONAL SURVEY <u> </u>	
HOLE DIAMETER <u>6</u>		TEMPERATURE <u> </u>	
WATER FACTOR <u> </u>		OPERATOR <u> </u>	
RESISTIVITY <u> </u>		WIRE <u> </u>	
SELF POTENTIAL <u> </u>		CONTRACTOR <u> </u>	
PERMS <u> </u>		LAST A.C. TEST RUN <u>2-28-78</u>	
1ST RUN	2ND RUN	FLUID LEVEL <u> </u>	
3RD RUN	REMARKS <u> </u>		
DEPTH <u>90</u>			
TIME <u>60</u>			
TOTAL PSI <u>90</u>			
SCALE RUN <u>25</u>			



GEOPHYSICAL LOG		DEPTH	P	C	A	STRIP LOG	LITHOLOGY LOG
<div>500-5000 FCI</div>	<div>50 66 AM 694</div>	0					Sitst, Grn
		20					Sitst, Brn
		40					Sitst Red Brn V. Weathered Volcanics
		60					Andesitic Volcanics Gry Brn
		80					Sitst Red Brn Volcanic Frags Abnt
		100					
		120					
		140					
		160					
		180					
		200					
		220					
		240					
		260					
		280					
		300					
		320					
		340					
		360					
		380					
		400					
		420					
		440					
		460					
		480					
		500					
		520					
		540					
		560					
		580					
		600					
		620					
		640					
		660					
		680					
		700					
		720					
		740					
		760					
		780					
		800					
		820					
		840					
		860					
		880					
		900					
		920					
		940					
		960					
		980					
		1000					
		1020					
		1040					
		1060					
		1080					
		1100					
		1120					
		1140					
		1160					
		1180					
		1200					
		1220					
		1240					
		1260					
		1280					
		1300					
		1320					
		1340					
		1360					
		1380					
		1400					
		1420					
		1440					
		1460					
		1480					
		1500					
		1520					
		1540					
		1560					
		1580					
		1600					
		1620					
		1640					
		1660					
		1680					
		1700					
		1720					
		1740					
		1760					
		1780					
		1800					
		1820					
		1840					
		1860					
		1880					
		1900					
		1920					
		1940					
		1960					
		1980					
		2000					
		2020					
		2040					
		2060					
		2080					
		2100					
		2120					
		2140					
		2160					
		2180					
		2200					
		2220					
		2240					
		2260					
		2280					
		2300					
		2320					
		2340					
		2360					
		2380					
		2400					
		2420					
		2440					
		2460					
		2480					
		2500					
		2520					
		2540					
		2560					
		2580					
		2600					
		2620					
		2640					
		2660					
		2680					
		2700					
		2720					
		2740					
		2760					
		2780					
		2800					
		2820					
		2840					
		2860					
		2880					
		2900					
		2920					
		2940					
		2960					
		2980					
		3000					
		3020					
		3040					
		3060					
		3080					
		3100					
		3120					
		3140					
		3160					
		3180					
		3200					
		3220					
		3240					
		3260					
		3280					
		3300					
		3320					
		3340					
		3360					
		3380					
		3400					
		3420					
		3440					
		3460					
		3480					
		3500					
		3520					
		3540					
		3560					
		3580					
		3600					
		3620					
		3640					
		3660					
		3680					
		3700					
		3720					
		3740					
		3760					
		3780					
		3800					
		3820					
		3840					
		3860					
		3880					
		3900					
		3920					
		3940					
		3960					
		3980					
		4000					
		4020					
		4040					
		4060					
		4080					
		4100					
		4120					
		4140					
		4160					
		4180					
		4200					
		4220					
		4240					
		4260					
		4280					
		4300					
		4320					
		4340					
		4360					
		4380					
		4400					
		4420					
		4440					
		4460					
		4480					
		4500					
		4520					
		4540					
		4560					
		4580					
		4600					
		4620					
		4640					
		4660					
		4680					
		4700					
		4720					
		4740					
		4760					
		4780					
		4800					
		4820					
		4840					
		4860					
		4880					
		4900					
		4920					
4940							
4960							
4980							
5000							

MINERALS EXPLORATION CO.

CASPER, WYOMING

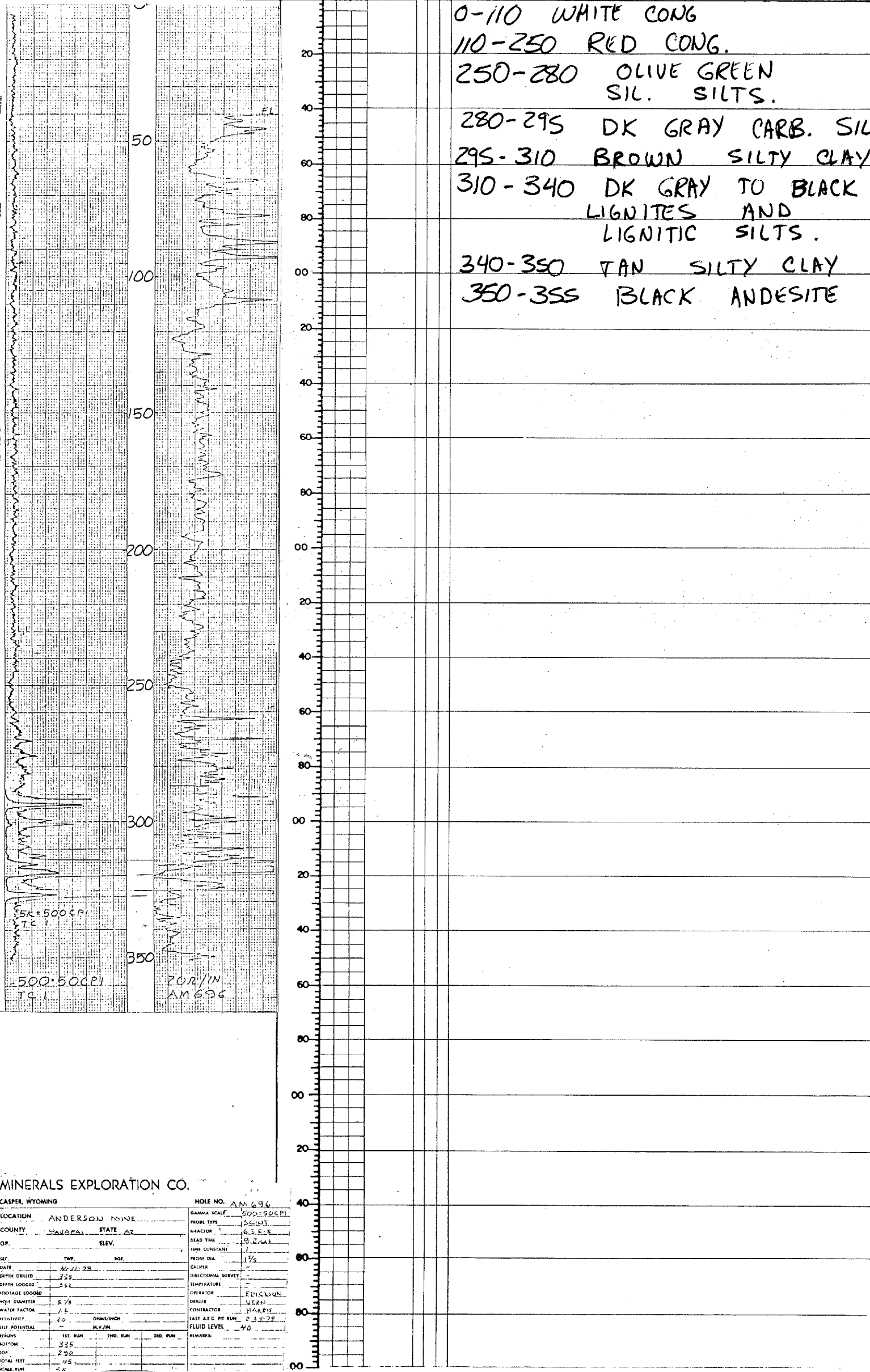
LOG NO. AM 694

LOCATION	ANDERSON 20206	SECTION	20206
COUNTY	WYOMING	STATE	WY
GP.	20206	SECTION	20206
DATE	7/2/78	SECTION	20206
DEPTH	70	SECTION	20206
TEMPERATURE	70	SECTION	20206
WATER	70	SECTION	20206
WATER	70	SECTION	20206
WATER	70	SECTION	20206
WATER	70	SECTION	20206
WATER	70	SECTION	20206
WATER	70	SECTION	20206
WATER	70	SECTION	20206
WATER	70	SECTION	20206
WATER	70	SECTION	20206
WATER	70	SECTION	20206
WATER	70	SECTION	20206
WATER	70	SECTION	20206
WATER	70	SECTION	20206
WATER	70	SECTION	20206
WATER	70	SECTION	20206
WATER	70	SECTION	20206
WATER	70	SECTION	20206
WATER	70	SECTION	20206
WATER	70	SECTION	20206
WATER	70	SECTION	20206
WATER	70	SECTION	20206
WATER	70	SECTION	20206
WATER	70	SECTION	20206
WATER	70	SECTION	20206
WATER	70	SECTION	20206
WATER	70	SECTION	20206
WATER	70	SECTION	20206
WATER	70	SECTION	20206
WATER	70	SECTION	20206
WATER	70	SECTION	20206
WATER	70	SECTION	20206
WATER	70	SECTION	20206
WATER	70	SECTION	20206
WATER	70	SECTION	20206
WATER	70	SECTION	20206
WATER	70	SECTION	20206
WATER	70	SECTION	20206
WATER	70	SECTION	20206
WATER	70	SECTION	20206
WATER	70	SECTION	20206
WATER	70	SECTION	20206
WATER	70	SECTION	20206
WATER	70	SECTION	20206
WATER	70	SECTION	20206
WATER	70	SECTION	20206
WATER	70	SECTION	20206
WATER	70	SECTION	20206
WATER	70	SECTION	20206
WATER	70	SECTION	20206
WATER	70	SECTION	20206
WATER	70	SECTION	20206
WATER	70	SECTION	20206
WATER	70	SECTION	20206
WATER	70	SECTION	20206
WATER	70	SECTION	20206
WATER	70	SECTION	20206
WATER	70	SECTION	20206
WATER	70	SECTION	20206
WATER	70	SECTION	20206
WATER	70	SECTION	20206
WATER	70	SECTION	20206
WATER	70	SECTION	20206
WATER	70	SECTION	20206
WATER	70	SECTION	20206
WATER	70	SECTION	20206
WATER	70	SECTION	20206
WATER	70	SECTION	20206
WATER	70	SECTION	20206
WATER	70	SECTION	20206
WATER	70	SECTION	20206
WATER	70	SECTION	20206
WATER	70	SECTION	20206
WATER	70	SECTION	20206
WATER	70	SECTION	20206
WATER	70	SECTION	20206
WATER	70	SECTION	20206
WATER	70	SECTION	20206</

[illegible]

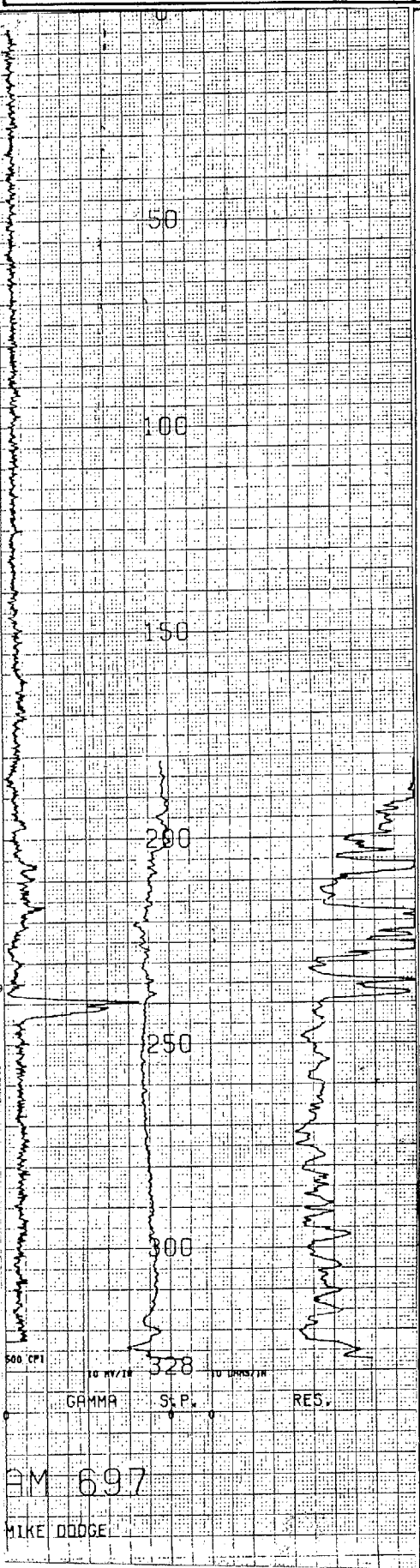
PROJECT ANDERSON MINE HOLE SIZE 5 ☐ AIR ☒ WATER HOLE NO. AM 696
ELEVATION _____ NORTH _____ EAST _____ LOGGED BY LUCHT DATE 11 APRIL 78
SECTION _____ TOWNSHIP _____ RANGE _____ T.D. 355 P.D. _____
HARRIS - MINERALS #61

GEOPHYSICAL LOG	DEPTH	P	C	A	STRIP LOG	LITHOLOGY LOG
-----------------	-------	---	---	---	-----------	---------------



MINERALS EXPLORATION CO.

CASPER, WYOMING		HOLE NO. <u>AM 696</u>	
LOCATION <u>ANDERSON MINE</u>		DIAMETER SCALE <u>500-5000 OHM-CM</u>	
COUNTY <u>SAVANA</u>	STATE <u>AZ</u>	PROBE TYPE <u>SC-21</u>	
OP. _____	ELEV. _____	A-FACTOR <u>0.25-5</u>	
DATE <u>6/11/78</u>		DEAD TIME <u>0.2003</u>	
DEPTH DRILLED <u>355</u>		TIME CONSTANT <u>1</u>	
DEPTH LOGGED <u>352</u>		PROBE DIA. <u>1 1/2</u>	
PORTAGE LOGGED _____		CALIBER _____	
HOLE DIAMETER <u>5/8</u>		DIRECTIONAL SURVEY _____	
WATER FACTOR <u>1.2</u>		TEMPERATURE _____	
RESISTIVITY <u>20</u>	OHMS/INCH	OPERATOR <u>EDISON</u>	
SELF POTENTIAL _____	MLV/IN	DRILLER <u>VERO</u>	
REMARKS		CONTRACTOR <u>HARRIS</u>	
1ST. RUN <u>335</u>		LAST A.C. PT. RUN <u>234-28</u>	
2ND. RUN _____		FLUID LEVEL <u>40</u>	
3RD. RUN _____		REMARKS _____	
TOP <u>238</u>			
TOTAL FEET <u>45</u>			
SCALE RUN <u>5K</u>			

GEOPHYSICAL LOG	DEPTH	P	C	A	STRIP LOG	LITHOLOGY LOG
	0					
	20					SS Fine to med Tal,
	40					
	60					SS, silty, Tan Brn
	80					
	100					SS, Brn, silty
	120					
	140					Siltst Brn Sndy
	160					
	180					Siltst, Grn, Bentonitic layers
	200					
	220					Intbed Grn siltst & wht calc Tuff
	240					
	260					Carbonaceous siltst & lignite blk to dk gry
	280					
	300					Siltst, Red Brn
	320					Siltst Tan Brn
	340					Siltst Brn to Vel Grn
	360					Sndy Siltst w/ Gry Brn Andesitic Volcanics
	380					
	400					
	420					
	440					
	460					
	480					
	500					

318

300

280

260

240

220

200

180

160

140

120

100

80

60

40

20

0

3-15-78

AM 697

ANDERSON MINE

YAVAPAI

ARIZONA

MINERALS EXPLORATION

GROUND LEVEL

3-15-78

328

335

58

11.0

TTSD

WICKHAM, A

0.5

0.55

0.75

1.25

355-23

1 1/4

1 1/2

1 3/4

2

2 1/4

2 1/2

2 3/4

3

3 1/4

3 1/2

3 3/4

4

4 1/4

4 1/2

4 3/4

5

5 1/4

5 1/2

5 3/4

6

6 1/4

6 1/2

6 3/4

7

7 1/4

7 1/2

7 3/4

8

8 1/4

8 1/2

8 3/4

9

9 1/4

9 1/2

9 3/4

10

10 1/4

10 1/2

10 3/4

11

11 1/4

11 1/2

11 3/4

12

12 1/4

12 1/2

12 3/4

13

13 1/4

13 1/2

13 3/4

14

14 1/4

14 1/2

14 3/4

15

15 1/4

15 1/2

15 3/4

16

16 1/4

16 1/2

16 3/4

17

17 1/4

17 1/2

17 3/4

18

18 1/4

18 1/2

18 3/4

19

19 1/4

19 1/2

19 3/4

20

20 1/4

20 1/2

20 3/4

21

21 1/4

21 1/2

21 3/4

22

22 1/4

22 1/2

22 3/4

23

23 1/4

23 1/2

23 3/4

24

24 1/4

24 1/2

24 3/4

25

25 1/4

25 1/2

25 3/4

26

26 1/4

26 1/2

26 3/4

27

27 1/4

27 1/2

27 3/4

28

28 1/4

28 1/2

28 3/4

29

29 1/4

29 1/2

29 3/4

30

30 1/4

30 1/2

30 3/4

31

31 1/4

31 1/2

31 3/4

32

32 1/4

32 1/2

32 3/4

33

33 1/4

33 1/2

33 3/4

34

34 1/4

34 1/2

34 3/4

35

35 1/4

35 1/2

35 3/4

36

36 1/4

36 1/2

36 3/4

37

37 1/4

37 1/2

37 3/4

38

38 1/4

38 1/2

38 3/4

39

39 1/4

39 1/2

39 3/4

40

40 1/4

40 1/2

40 3/4

41

41 1/4

41 1/2

41 3/4

42

42 1/4

42 1/2

42 3/4

43

43 1/4

43 1/2

43 3/4

44

44 1/4

44 1/2

44 3/4

45

45 1/4

45 1/2

45 3/4

46

46 1/4

46 1/2

46 3/4

47

47 1/4

47 1/2

47 3/4

48

48 1/4

48 1/2

48 3/4

49

49 1/4

49 1/2

49 3/4

50

50 1/4

50 1/2

50 3/4

51

51 1/4

51 1/2

51 3/4

52

52 1/4

52 1/2

52 3/4

53

53 1/4

53 1/2

53 3/4

54

54 1/4

54 1/2

54 3/4

55

55 1/4

55 1/2

55 3/4

56

56 1/4

56 1/2

56 3/4

57

57 1/4

57 1/2

57 3/4

58

58 1/4

58 1/2

58 3/4

59

59 1/4

59 1/2

59 3/4

60

60 1/4

60 1/2

60 3/4

61

61 1/4

61 1/2

61 3/4

62

62 1/4

62 1/2

62 3/4

63

63 1/4

63 1/2

63 3/4

64

64 1/4

64 1/2

64 3/4

65

65 1/4

65 1/2

65 3/4

66

66 1/4

66 1/2

66 3/4

67

67 1/4

67 1/2

67 3/4

68

68 1/4

68 1/2

68 3/4

69

69 1/4

69 1/2

69 3/4

70

70 1/4

70 1/2

70 3/4

71

71 1/4

71 1/2

71 3/4

72

72 1/4

72 1/2

72 3/4

73

73 1/4

73 1/2

73 3/4

74

74 1/4

74 1/2

74 3/4

75

75 1/4

75 1/2

75 3/4

76

76 1/4

76 1/2

76 3/4

77

77 1/4

77 1/2

77 3/4

78

78 1/4

78 1/2

78 3/4

79

79 1/4

79 1/2

79 3/4

80

80 1/4

80 1/2

80 3/4

81

81 1/4

81 1/2

81 3/4

82

82 1/4

82 1/2

82 3/4

83

83 1/4

83 1/2

83 3/4

84

84 1/4

84 1/2

84 3/4

85

85 1/4

85 1/2

85 3/4

86

86 1/4

86 1/2

86 3/4

87

87 1/4

87 1/2

87 3/4

88

88 1/4

88 1/2

88 3/4

89

89 1/4

89 1/2

89 3/4

90

90 1/4

90 1/2

90 3/4

91

91 1/4

91 1/2

91 3/4

92

92 1/4

92 1/2

92 3/4

93

93 1/4

93 1/2

93 3/4

94

94 1/4

94 1/2

94 3/4

95

95 1/4

95 1/2

95 3/4

96

96 1/4

96 1/2

96 3/4

97

97 1/4

97 1/2

97 3/4

98

98 1/4

98 1/2

98 3/4

99

99 1/4

99 1/2

99 3/4

100

100 1/4

100 1/2

100 3/4

TRACK USED: 1.4

PROBE X-FACTOR FROM ERDAP: 3-10-78: 649510

PROJECT ANDERSON MINE

HOLE SIZE 0.5 ☒ AIR ☒ WATER

HOLE NO. AM 698

NORTH _____

EAST

LOGGED BY CCM DATE 17 MAR 1964

TOWNSHIP 11 N

RANGE 10 W

T.D. 6/20 P.D. 6/20

VENTURE DRILLING

[illegible]

PROJECT Anderson Mine

☐ AIR ☒ WATER

HOLE NO. Am 699

NORTH _____

LOGGED BY C-216 DATE 3-15-78

TOWNSHIP _____

T.D. 230 P.D. _____

GEOPHYSICAL LOG		DEPTH	P	C	A	STRIP LOG	LITHOLOGY LOG
	0						{ Cg/ Tan Brn & AL? BIK Basalt Chunks
	20						{ ss, silt, to v.s. silt, Tan, Fine
	40						
	60						
	80						{ siltst, Grn to Grn Tan sandy at Top
	100						{ siltst Grn w/Intbd Buff Marlst
120							
140							
160						{ Silicified siltst, Grn w/Gry, Grn + Brn Chert, Intbd Thin wht calc Tuft	
180						{ Mdsl, Grn	
200							
220							
230 TD						{ siltst, Red Brn	
						{ siltst, Grn.	
						{ Andesitic volcanics, Gry Brn	

MINERALS EXPLORATION CO.

CASPER, WYOMING

HOLE NO. AM 699

LOCATION	ANDERSON MINE	GAMMA SCALE	500-800
COUNTY	KAYAPA STATE AZ	PROBE TYPE	SCINT
GP.	ELEV.	REACTOR	6.008-F
DATE	3-15-78	DEAD TIME	9.2%
DEPTH DRILLED	220	TIME CONSTANT	1
DEPTH LOGGED	228	PROBE DIA.	1 1/8
FOOTAGE LOGGED	5.75	CALIBER	-
HOLE DIAMETER	1.5	DIRECTIONAL SURVEY	-
WATER FACTOR	20	TEMPERATURE	-
RESISTIVITY	20 OHM-INCH	OPERATOR	ERICKSON
SURF. POTENTIAL	M.V./IN.	DESIGN	FRED
BURNS	1ST RUN	CONTRACTOR	COBAC
BOTTOM	2ND RUN	LAST A.C. FT. RUN	244.18
TOTAL FEET	3RD RUN	FLUID LEVEL	124
SCALE RUN		REMARKS	

P.D.

