



CONTACT INFORMATION  
Mining Records Curator  
Arizona Geological Survey  
3550 N. Central Ave, 2nd floor  
Phoenix, AZ, 85012  
602-771-1601  
<http://www.azgs.az.gov>  
[inquiries@azgs.az.gov](mailto:inquiries@azgs.az.gov)

The following file is part of the Anderson Mine Collection

### **ACCESS STATEMENT**

These digitized collections are accessible for purposes of education and research. We have indicated what we know about copyright and rights of privacy, publicity, or trademark. Due to the nature of archival collections, we are not always able to identify this information. We are eager to hear from any rights owners, so that we may obtain accurate information. Upon request, we will remove material from public view while we address a rights issue.

### **CONSTRAINTS STATEMENT**

The Arizona Geological Survey does not claim to control all rights for all materials in its collection. These rights include, but are not limited to: copyright, privacy rights, and cultural protection rights. The User hereby assumes all responsibility for obtaining any rights to use the material in excess of "fair use."

The Survey makes no intellectual property claims to the products created by individual authors in the manuscript collections, except when the author deeded those rights to the Survey or when those authors were employed by the State of Arizona and created intellectual products as a function of their official duties. The Survey does maintain property rights to the physical and digital representations of the works.

### **QUALITY STATEMENT**

The Arizona Geological Survey is not responsible for the accuracy of the records, information, or opinions that may be contained in the files. The Survey collects, catalogs, and archives data on mineral properties regardless of its views of the veracity or accuracy of those data.







MINERALS EXPLORATION CO.

CASPER, WYOMING

HOLE NO. AM-622

LOCATION ANDERSON MINE				GAMMA SCALE	500 = 50 CPS/in
COUNTY YAVAPAI STATE ARIZ				PROBE TYPE	SCINT
GP.				K-FACTOR	6.00 x 10 <sup>-5</sup>
ELEV.				DEAD TIME	9.4 μSEC
SEC.				TIME CONSTANT	1
TWP.				PROBE DIA.	1 5/8"
RGE.				CALIPER	-
DATE	2-27-78			DIRECTIONAL SURVEY	-
DEPTH DRILLED	200'			TEMPERATURE	-
DEPTH LOGGED	200'			OPERATOR	BRADLEY
FOOTAGE LOGGED	240'			DRILLER	FRED
HOLE DIAMETER	5 1/8"			CONTRACTOR	COBRA
WATER FACTOR	1.20			LAST A.E.C. PIT RUN	2-24-78
RESISTIVITY	15.2 OHMS/INCH			FLUID LEVEL	87'
SELF POTENTIAL	- M.V./IN.			REMARKS:	
RERUNS	1ST. RUN	2ND. RUN	3RD. RUN		
BOTTOM	110'				
TOP	70'				
TOTAL FEET	40'				
SCALE RUN					

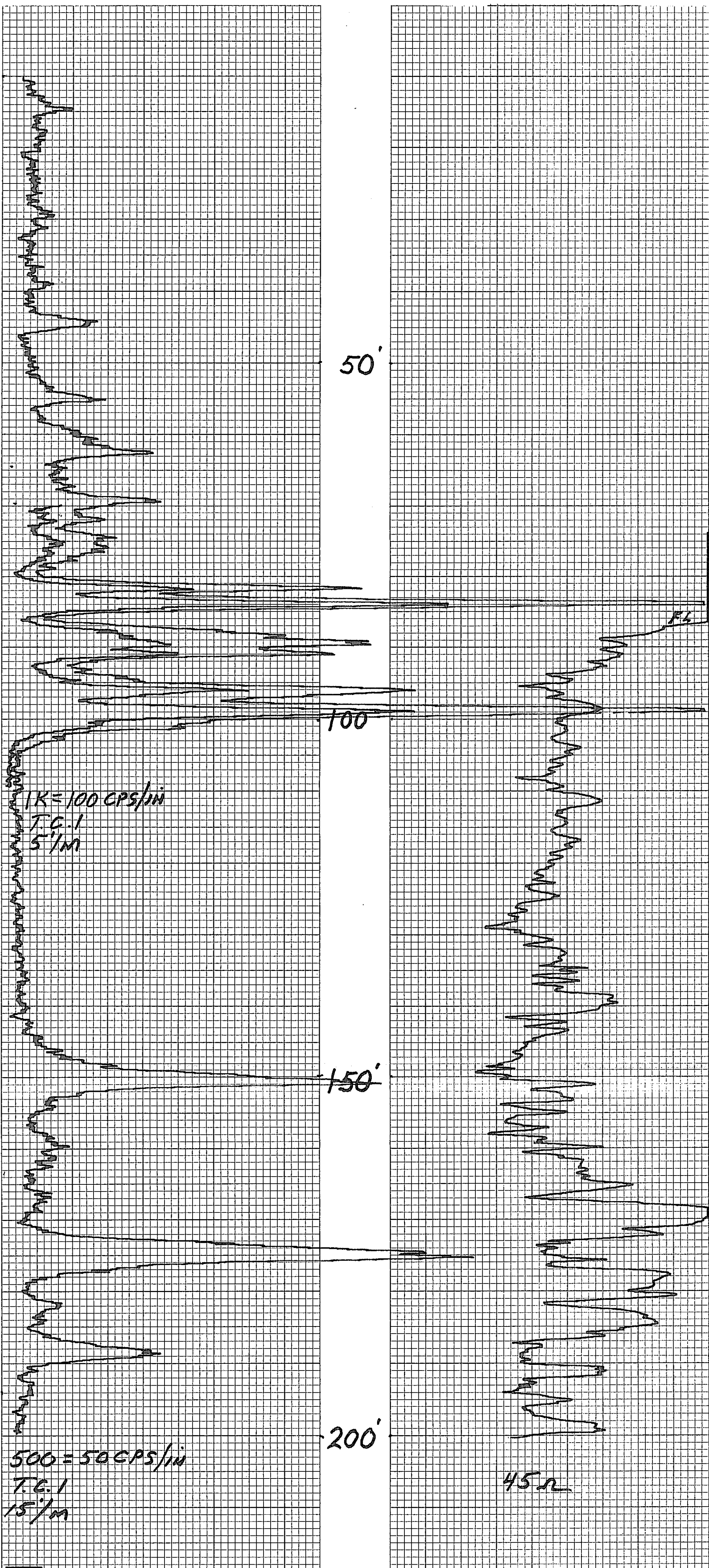
No. GC-1333

GRAPHIC CHARTS GRAPHIC CONTROLS CORPORATION BUFFALO, NEW YORK

PRINTED IN U.S.A.

No. GC-1333

GRAPHIC CHARTS GRAPHIC CONTROLS CORPORATION BUFFALO, NEW YORK

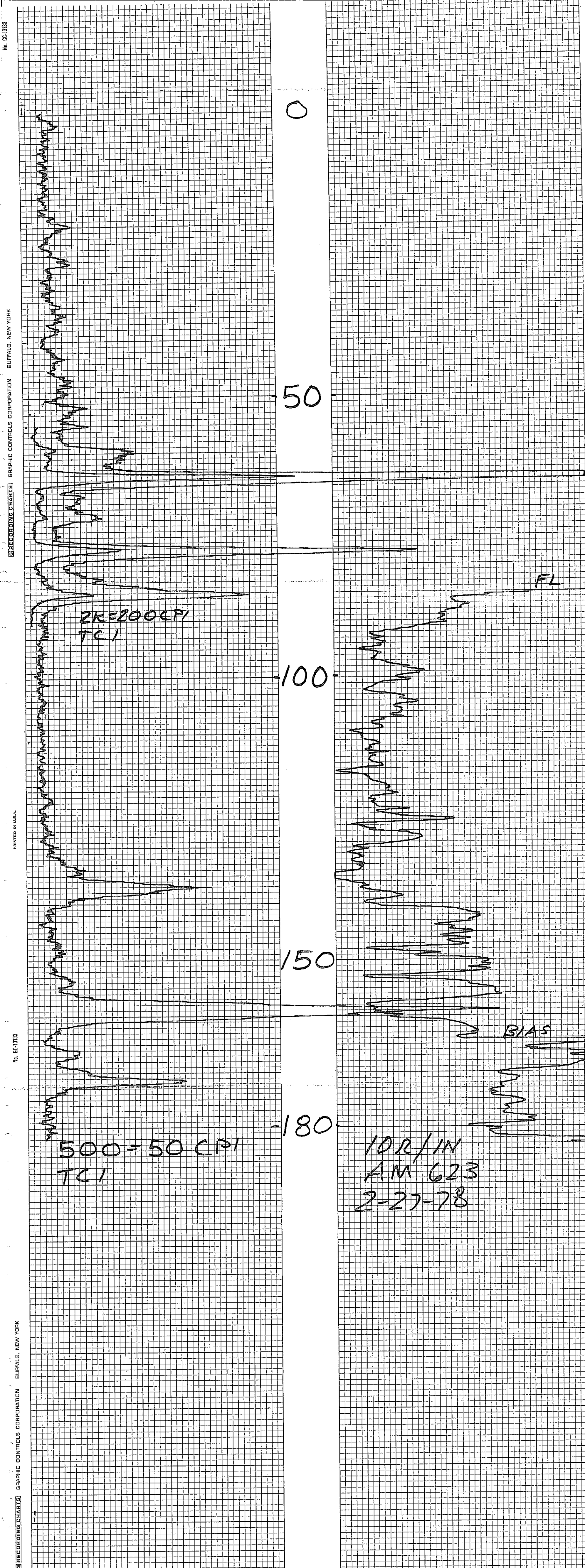


MINERALS EXPLORATION CO.

CASPER, WYOMING

HOLE NO. AM 623

LOCATION ANDERSON MINE				GAMMA SCALE	500=50CPI
COUNTY YAVAPAI STATE AZ				PROBE TYPE	SCINT
GP. ELEV.				K-FACTOR	6.000 E-5
SEC. TWP. RGE.				DEAD TIME	9.394 US
DATE 2-27-78				TIME CONSTANT	1 SEC
DEPTH DRILLED 185				PROBE DIA.	
DEPTH LOGGED 183				CALIPER	
FOOTAGE LOGGED 218				DIRECTIONAL SURVEY	
HOLE DIAMETER 5 1/8				TEMPERATURE	
WATER FACTOR 1.12				OPERATOR	ERICKSON
RESISTIVITY 10 OHMS/INCH				DRILLER	FREDDY
SELF POTENTIAL - M.V./IN.				CONTRACTOR	
RERUNS 1ST. RUN 2ND. RUN 3RD. RUN				LAST A.E.C. PIT RUN	
BOTTOM 90				FLUID LEVEL	85'
TOP 55				REMARKS:	
TOTAL FEET 35					
SCALE RUN 2K=200CPI					



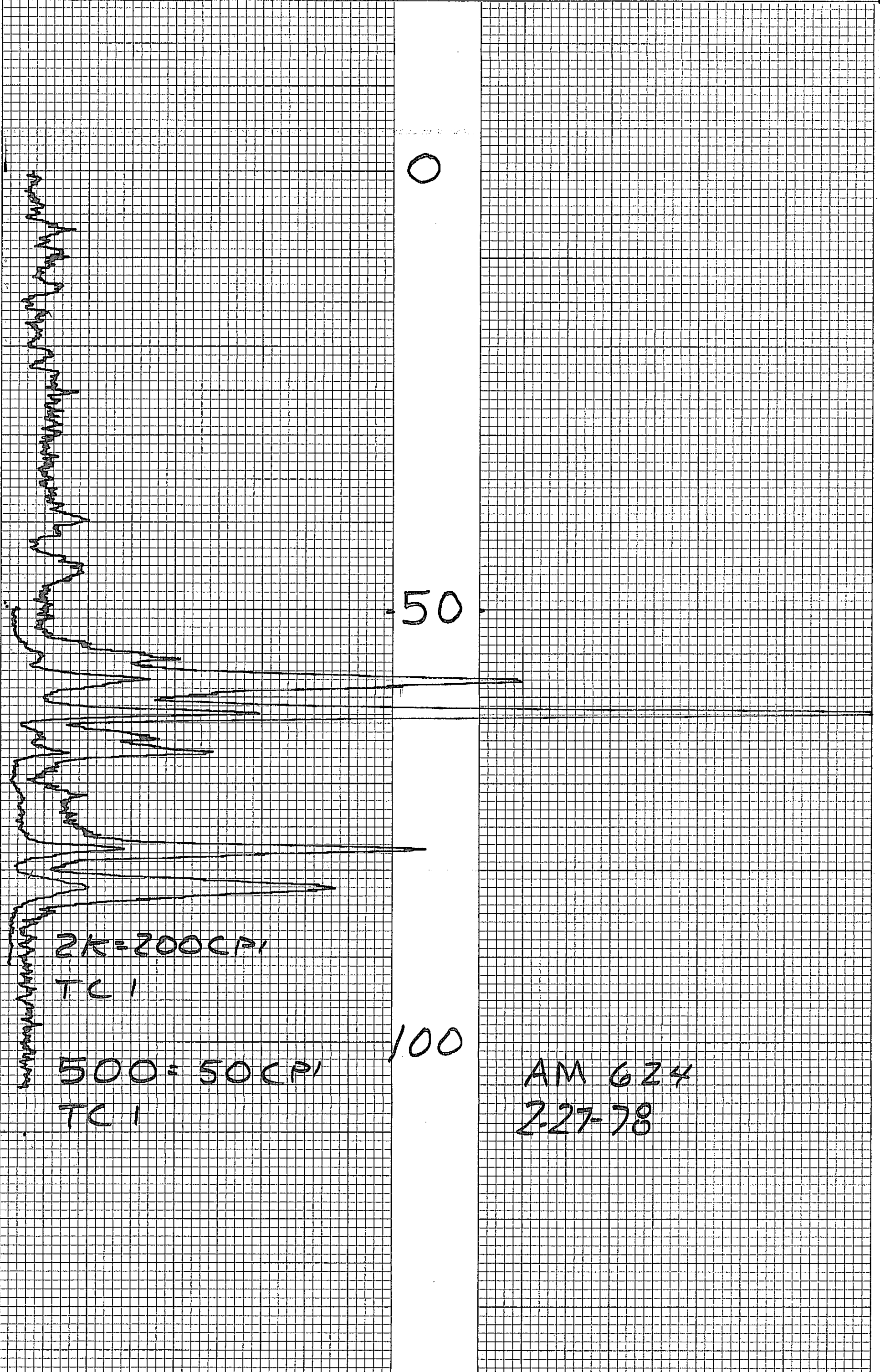


MINERALS EXPLORATION CO.

CASPER, WYOMING

HOLE NO. AM 624

LOCATION ANDERSON MINE				GAMMA SCALE	500=50CPI
COUNTY YAVAPAI STATE AZ				PROBE TYPE	SCINT
GP. ELEV.				K-FACTOR	6.000E-5
SEC. TWP. RGE.				DEAD TIME	9.394 USEC
DATE 2-27-78				TIME CONSTANT	1 SEC
DEPTH DRILLED 120				PROBE DIA.	
DEPTH LOGGED 105				CALIPER	
FOOTAGE LOGGED 150				DIRECTIONAL SURVEY	
HOLE DIAMETER 5 1/8				TEMPERATURE	
WATER FACTOR -				OPERATOR	ERICKSON
RESISTIVITY - OHMS/INCH				DRILLER	FREDDY
SELF POTENTIAL - M.V./IN.				CONTRACTOR	
RERUNS 1ST. RUN 2ND. RUN 3RD. RUN				LAST A.E.C. PIT RUN	
BOTTOM 90				FLUID LEVEL -	
TOP 45				REMARKS:	
TOTAL FEET 45					
SCALE RUN 2K=200CPI					



PRINTED IN U.S.A.

No. GC-13133

GRAPHIC CONTROLS CORPORATION BUFFALO, NEW YORK

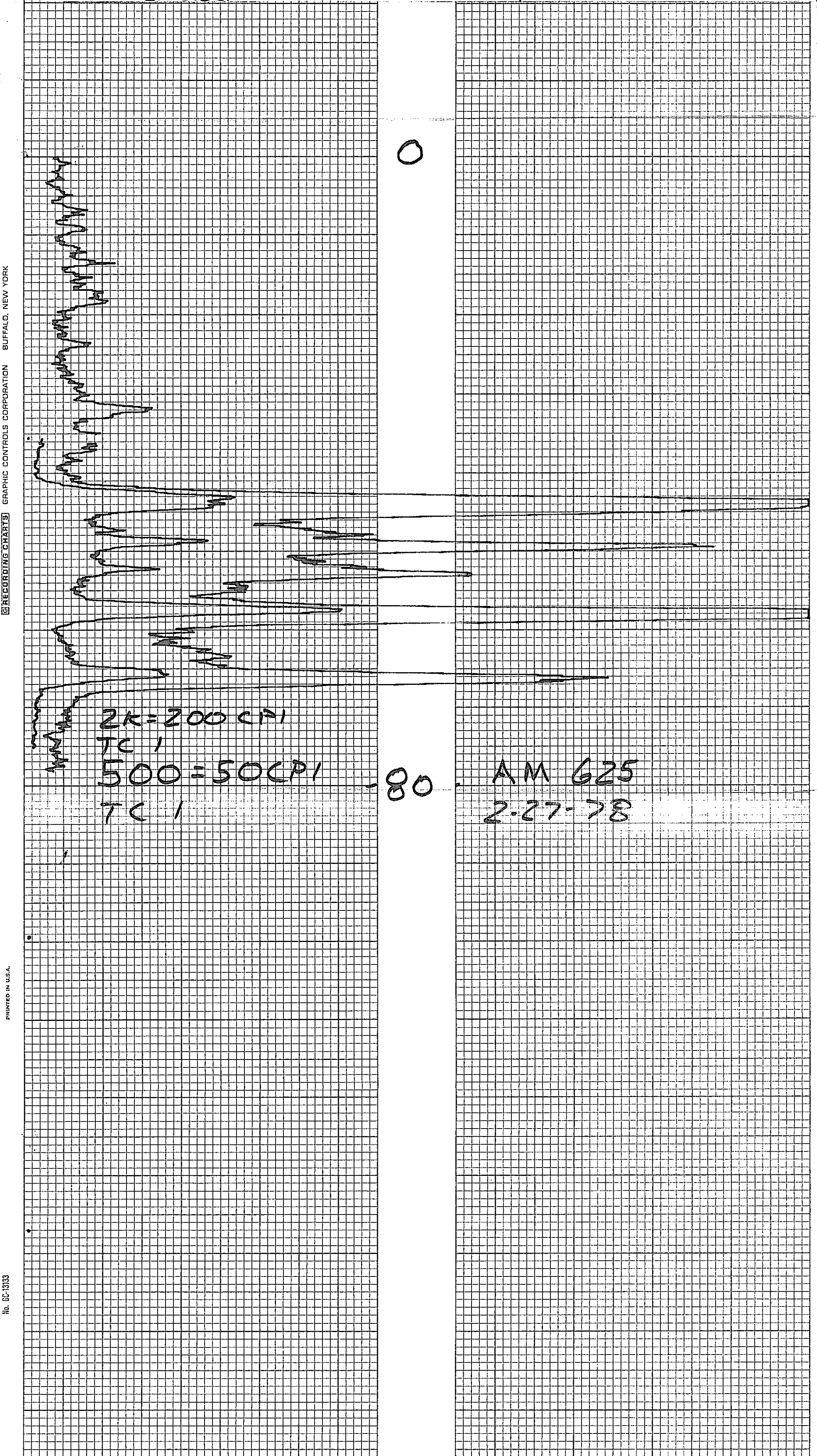
RECORDING CHARTS

MINERALS EXPLORATION CO.

CASPER, WYOMING

HOLE NO. AM 625

LOCATION ANDERSON MINE				GAMMA SCALE	500=50CPI
COUNTY YAVAPAI STATE AZ				PROBE TYPE	SCINT
GP. ELEV.				K-FACTOR	5.000 E-5
SEC. TWP. RGE.				DEAD TIME	9.394 USEC
DATE 2-27-78				TIME CONSTANT	1 SEC
DEPTH DRILLED 80				PROBE DIA.	
DEPTH LOGGED 80				CALIPER	
FOOTAGE LOGGED 120				DIRECTIONAL SURVEY	
HOLE DIAMETER 5 1/8				TEMPERATURE	
WATER FACTOR N/A				OPERATOR	ERICKSON
RESISTIVITY N/A OHMS/INCH				DRILLER	FREDDY
SELF POTENTIAL M.V./IN.				CONTRACTOR	
RERUNS 1ST. RUN 2ND. RUN 3RD. RUN				LAST A.E.C. PIT RUN	
BOTTOM 75				FLUID LEVEL N/A	
TOP 35				REMARKS:	
TOTAL FEET 40					
SCALE RUN 2K=200CPI					

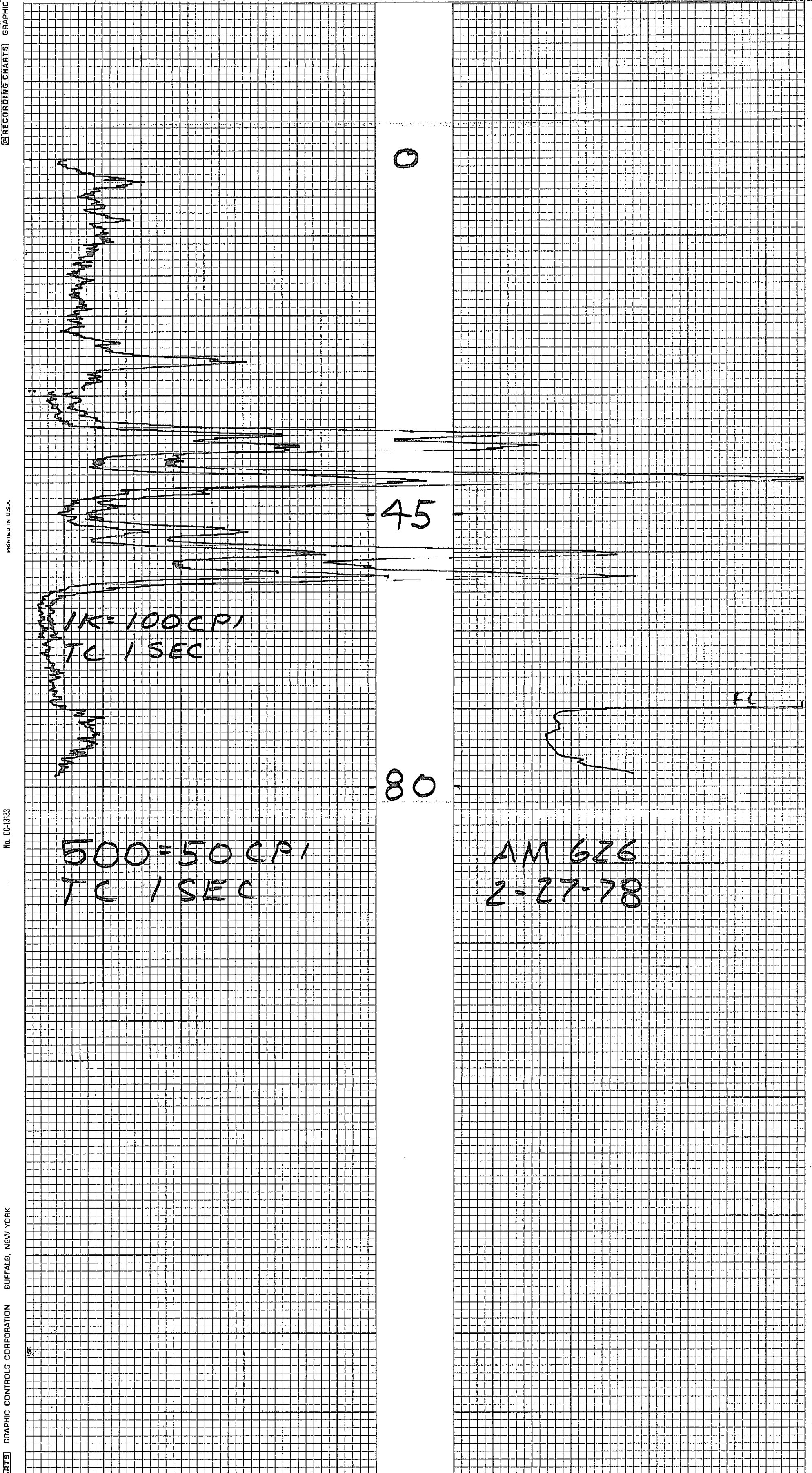


MINERALS EXPLORATION CO.

CASPER, WYOMING

HOLE NO. AM 626

LOCATION ANDERSON MINE				GAMMA SCALE	500=50CPI
COUNTY YAVAPAI STATE AZ				PROBE TYPE	SCINT
GP.				K-FACTOR	5.000 E-5
ELEV.				DEAD TIME	9.394 USEC
SEC.				TIME CONSTANT	1 SEC
TWP.				PROBE DIA.	
RGE.				CALIPER	
DATE		2-27-78		DIRECTIONAL SURVEY	
DEPTH DRILLED		80		TEMPERATURE	°
DEPTH LOGGED		80		OPERATOR	ERICKSON
FOOTAGE LOGGED				DRILLER	FREDDY
HOLE DIAMETER		5 1/8		CONTRACTOR	
WATER FACTOR		1.20		LAST A.E.C. PIT RUN	
RESISTIVITY		100 OHMS/INCH		FLUID LEVEL 70'	
SELF POTENTIAL		M.V./IN.		REMARKS:	
RERUNS	1ST. RUN	2ND. RUN	3RD. RUN		
BOTTOM	60				
TOP	30				
TOTAL FEET	30				
SCALE RUN	1K=100CPI				



GRAPHIC RECORDING CHARTS

PRINTED IN U.S.A.

No. GC-13133

GRAPHIC CONTROLS CORPORATION

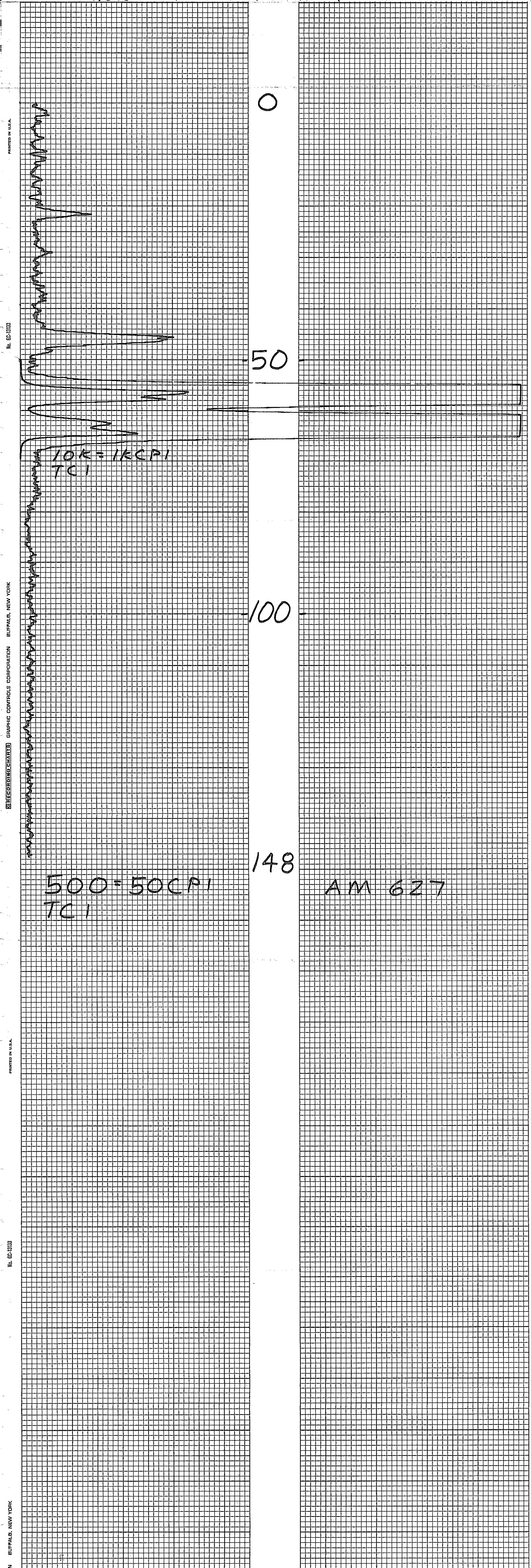
BUFFALO, NEW YORK



CASPER, WYOMING

HOLE NO. Am 627

LOCATION ANDERSON MINE				GAMMA SCALE	500=50CPI
COUNTY YAVAPAI STATE AZ				PROBE TYPE	SCINT
GP. ELEV.				K-FACTOR	6.00E-5
SEC. TWP. RGE.				DEAD TIME	9.2us
DATE 3-31-78				TIME CONSTANT	1
DEPTH DRILLED 150				PROBE DIA.	1 5/8
DEPTH LOGGED 148				CALIPER	-
FOOTAGE LOGGED				DIRECTIONAL SURVEY	-
HOLE DIAMETER 6				TEMPERATURE	-
WATER FACTOR -				OPERATOR	ERICKSON
RESISTIVITY - OHMS/INCH				DRILLER	DENNIS
SELF POTENTIAL - M.V./IN.				CONTRACTOR	VENTURE
RERUNS	1ST. RUN	2ND. RUN	3RD. RUN	LAST A.E.C. PIT RUN 2-24-78	
BOTTOM	70			FLUID LEVEL	
TOP	50			REMARKS:	
TOTAL FEET	20				
SCALE RUN	10K				



PRINTED IN U.S.A.

No. GC-1333

GRAPHIC CONTROLS CORPORATION BUFFALO, NEW YORK

RECORDING CHARTS

PRINTED IN U.S.A.

No. GC-1333

BUFFALO, NEW YORK

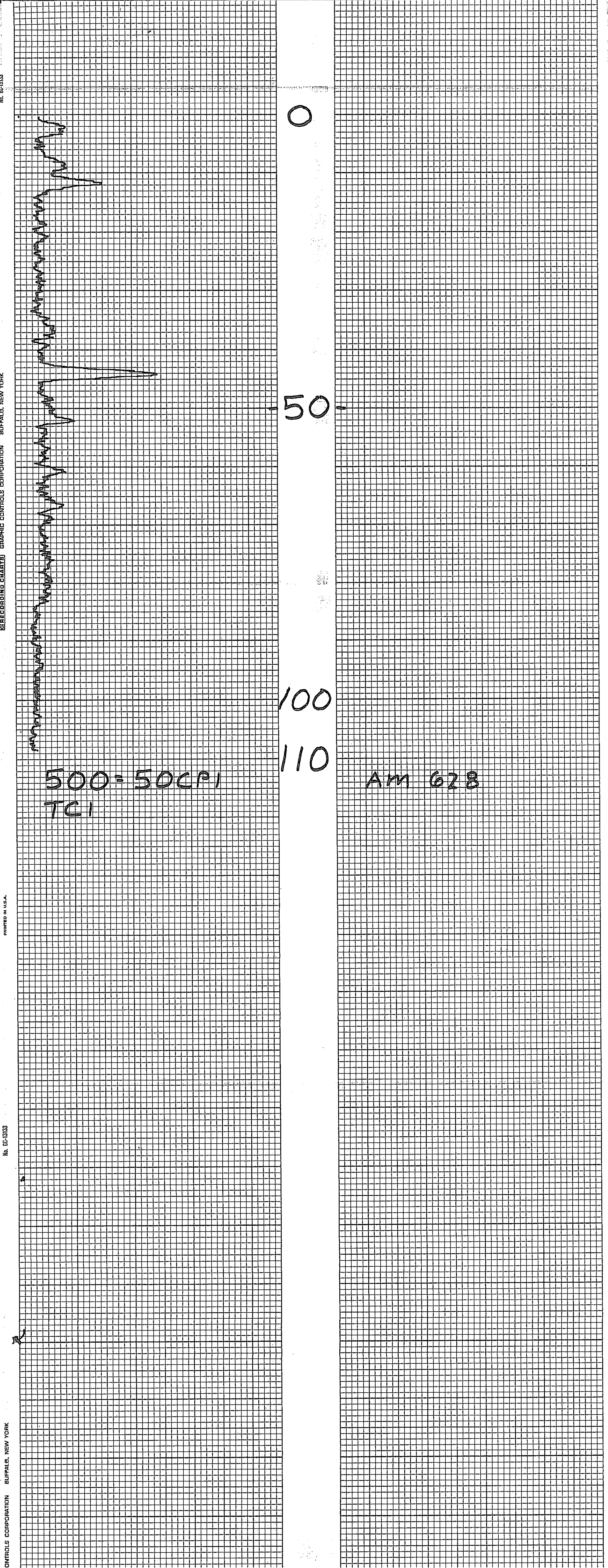


MINERALS EXPLORATION CO.

CASPER, WYOMING

HOLE NO. Am 628

LOCATION ANDERSON MINE				GAMMA SCALE	500=50CPI
COUNTY YAVAPAI STATE AZ				PROBE TYPE	SCINT
GP. ELEV.				K-FACTOR	6.00E-5
SEC. TWP. RGE.				DEAD TIME	92ms
DATE	3-14-78			TIME CONSTANT	1
DEPTH DRILLED	115			PROBE DIA.	1 5/8
DEPTH LOGGED	110			CALIPER	-
FOOTAGE LOGGED				DIRECTIONAL SURVEY	-
HOLE DIAMETER	6			TEMPERATURE	-
WATER FACTOR	-			OPERATOR	ERICKSON
RESISTIVITY	- OHMS/INCH			DRILLER	DENNIS
SELF POTENTIAL	- M.V./IN.			CONTRACTOR	VENTURE
RERUNS	1ST. RUN	2ND. RUN	3RD. RUN	LAST A.E.C. PIT RUN	2-24-78
BOTTOM				FLUID LEVEL	
TOP				REMARKS:	
TOTAL FEET					
SCALE RUN					

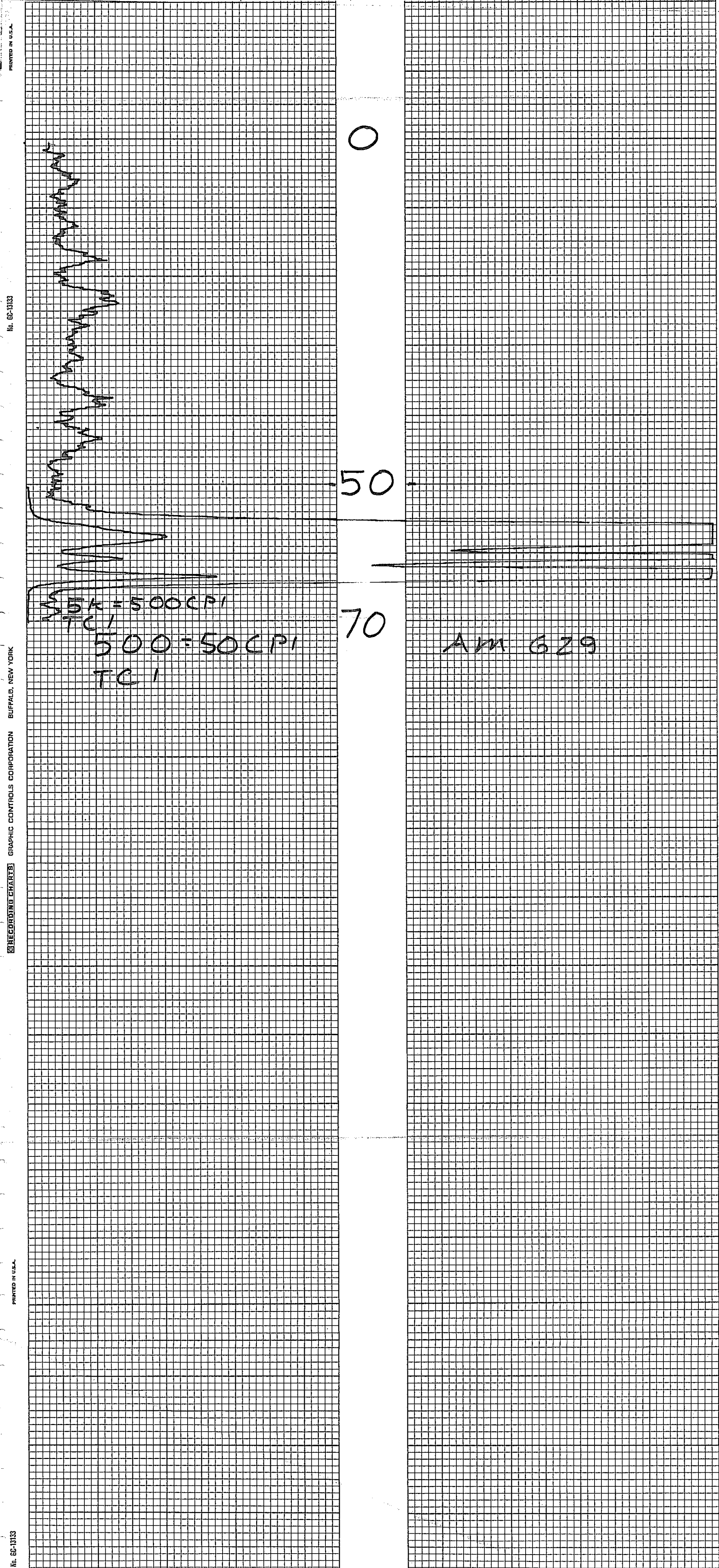


MINERALS EXPLORATION CO.

CASPER, WYOMING

HOLE NO. AM 629

LOCATION ANDERSON MINE				GAMMA SCALE	500=50CPI
COUNTY YAVAPAI STATE AZ				PROBE TYPE	SCINT
GP. ELEV.				K-FACTOR	6.00 E-5
SEC. TWP. RGE.				DEAD TIME	9.2us
DATE	8-4-1-78			TIME CONSTANT	1
DEPTH DRILLED	75			PROBE DIA.	1 5/8
DEPTH LOGGED	71			CALIPER	-
FOOTAGE LOGGED				DIRECTIONAL SURVEY	-
HOLE DIAMETER	6			TEMPERATURE	-
WATER FACTOR	-			OPERATOR	ERICKSON
RESISTIVITY	-			DRILLER	DENNIS
SELF POTENTIAL	-			CONTRACTOR	VENTURE
	OHMS/INCH			LAST A.E.C. PIT RUN	2-24-78
	M.V./IN.			FLUID LEVEL	
RERUNS	1ST. RUN	2ND. RUN	3RD. RUN	REMARKS:	
BOTTOM	70				
TOP	50				
TOTAL FEET	20				
SCALE RUN	5K				



PRINTED IN U.S.A.

No. GC-13133

GRAPHIC CONTROLS CORPORATION BUFFALO, NEW YORK

RECORDING CHARTS

PRINTED IN U.S.A.

No. GC-13133

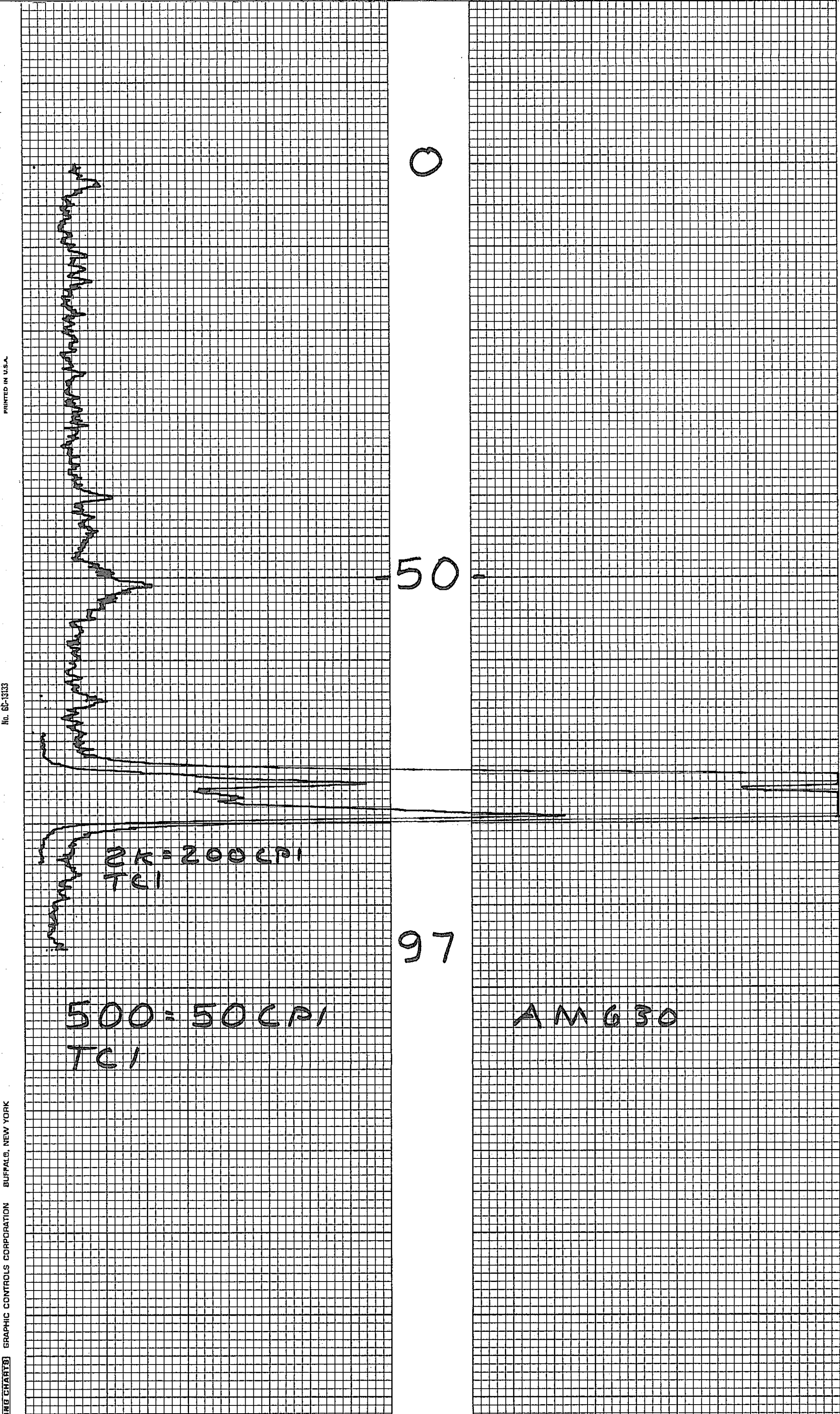


MINERALS EXPLORATION CO.

CASPER, WYOMING

HOLE NO. AM 630

LOCATION ANDERSON MINE				GAMMA SCALE	500=50CPI
COUNTY YAVAPAI STATE AZ				PROBE TYPE	SCINT
GP.				K-FACTOR	6.00F-5
ELEV.				DEAD TIME	9.2us
SEC.				TIME CONSTANT	1
TWP.				PROBE DIA.	1 5/8
RGE.				CALIPER	-
DATE	3-16-78			DIRECTIONAL SURVEY	-
DEPTH DRILLED	100			TEMPERATURE	-
DEPTH LOGGED	97			OPERATOR	ERICKSON
FOOTAGE LOGGED				DRILLER	DENNIS
HOLE DIAMETER	6			CONTRACTOR	VENTURE
WATER FACTOR	-			LAST A.E.C. PIT RUN	2-24-78
RESISTIVITY	-			OHMS/INCH	
SELF POTENTIAL	-			M.V./IN.	
RERUNS	1ST. RUN	2ND. RUN	3RD. RUN	FLUID LEVEL	
BOTTOM	85			REMARKS:	
TOP	70				
TOTAL FEET	15				
SCALE RUN	2k				



PRINTED IN U.S.A.

No. 60-1313

BUFFALO, NEW YORK

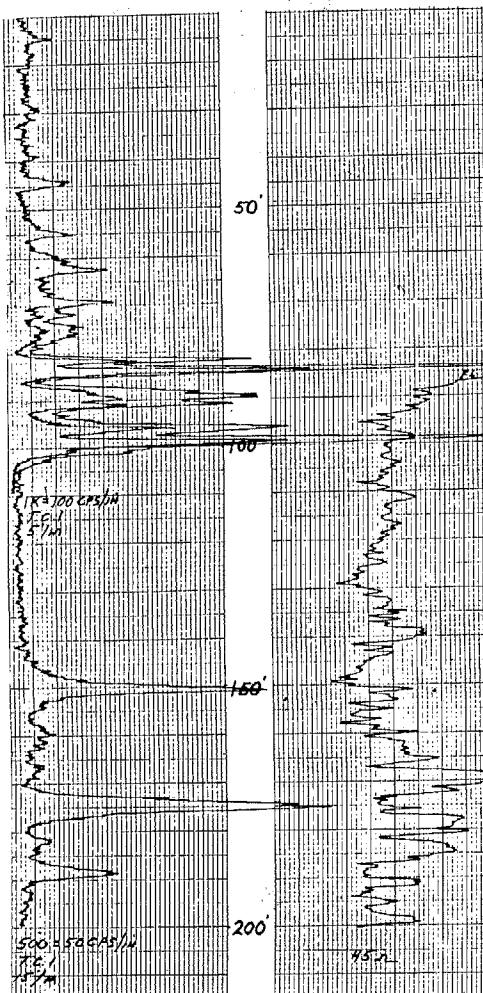
GRAPHIC CONTROLS CORPORATION

ING CHARTS





PROJECT Anderson Mine HOLE SIZE \_\_\_\_\_ ☒ AIR ☐ WATER HOLE NO. Am 622  
 ELEVATION \_\_\_\_\_ NORTH \_\_\_\_\_ EAST \_\_\_\_\_ LOGGED BY 2H DATE 2-27-78  
 SECTION \_\_\_\_\_ TOWNSHIP \_\_\_\_\_ RANGE \_\_\_\_\_ T.D. 195 P.D. \_\_\_\_\_

GEOPHYSICAL LOG		DEPTH	P	C	A	STRIP LOG	LITHOLOGY LOG
		20					siltst Grn w/ Gvy Chert
		40					Whit Calc Tuff
		60					siltst, Grn, Intld. whit Tuff
		80					Grn siltst Grn sub chert
		100					LS, Whit
		120					siltst Gvy Yellow chert
		140					siltst Silty (Mn) Lino stain Mn
		160					siltst Grn
		180					Lignite Rk
		200					siltst Blu Grn
		220					siltst Tan
		240					carb siltst, Earthy Rk
		260					siltst Red, No volcanics
		280					siltst Vol Grn
		300					siltst Grn Tan
		320					Carbonaceous siltst
		340					siltst Red Andesitic Volcanic frags

PROJECT Anderson Mine

HOLE SIZE 5-8

☒ AIR ☐ WATERHOLE NO. AM 623

**ELEVATION**

**NORTH**

**EAST**

LOGGED BY

DATE \_\_\_\_\_

## SECTION

TOWNSHIP

## RANGE

T.D.

**P.D.**

Geophysical log plot showing depth (0-100 feet) versus resistivity (log scale, 100 to 100,000 ohm-ft). The plot includes a gamma ray log (GR) and a resistivity log (R). The lithology column on the right describes the rock units: 0-20 ft: siltst, Grn, Gry Grn Chert; 20-40 ft: Red Brn chert, Ls, Whit; 40-60 ft: siltst, Grn, Cherty, Limy; 60-80 ft: Ls, Whit; 80-100 ft: siltst Grn Gry chert, Ls, Whit, siltst Tan Thin Lignite, carb siltst Grn Gry, siltst Tan Sand, carb siltst Earthy, siltst Dk Grn to Blu Grn, siltst Lavender. Below 100 ft, the lithology is siltst Red No Volcanics, siltst Grn, Bentonite, siltst Vel Tan, carb siltst? Gry Grn Contamination, siltst Vel Grn, and siltst Red Brn w/ Andesitic Volcanic Frags. The geophysical data shows a significant resistivity increase around 80-90 feet depth, corresponding to the 'siltst Red' units. The gamma ray log shows a peak around 80-90 feet depth, indicating a high clay content. The resistivity log shows a sharp increase around 80-90 feet depth, indicating a high resistivity unit. The plot is labeled with '2000 CM' and '500-50 CM' on the left side, and '100 IN AM 623' and '2-27-78' on the right side. The plot is titled 'GEOPHYSICAL LOG' and 'LITHOLOGY LOG'.

DEPTH	P	C	A	STRIP LOG	LITHOLOGY LOG
0					siltst, Grn, Gry Grn Chert
20					Red Brn chert
40					Ls, Whit
60					siltst, Grn, Cherty, Limy
80					Ls, Whit
100					siltst Grn Gry chert
120					Ls, Whit
140					siltst Tan Thin Lignite
160					carb siltst Grn Gry
180					siltst Tan Sand
200					carb siltst Earthy
220					siltst Dk Grn to Blu Grn
240					siltst Lavender
260					siltst Red No Volcanics
280					siltst Grn
300					Bentonite
320					siltst Vel Tan
340					carb siltst? Gry Grn Contamination
360					siltst Vel Grn
380					siltst Red Brn w/ Andesitic Volcanic Frags



PROJECT Anderson Mine HOLE SIZE 5 1/8 ☒ AIR ☐ WATER HOLE NO. AM 624  
ELEVATION \_\_\_\_\_ NORTH \_\_\_\_\_ EAST \_\_\_\_\_ LOGGED BY CZP DATE 2-27-78  
SECTION \_\_\_\_\_ TOWNSHIP \_\_\_\_\_ RANGE \_\_\_\_\_ T.D. 110 P.D. \_\_\_\_\_

GEOPHYSICAL LOG		DEPTH	P	C	A	STRIP LOG	LITHOLOGY LOG
	<p>500-500 CM 100 AM 624 2-27-78</p>	0					51stst, Gry Grn, Gry Chert
		10					51stst Grn Trace Silicification
		20					2 Red Brn chert
		30					<del>LS</del> LS sily wht to wht Grn
		40					
		50					51stst Grn, Gry Chert Hent
		60					LS, wht
		70					Lignite Bk
		80					carb 51stst Gry silicified
		90					51stst, Gry Tan, Brn Chert
		100					51stst Gry Grn to Blu Grn
		110					carb 51stst + Lignite DK Gry to Bk, earthy
							51stst Gry Grn + Red Brn
							51stst Gryish Red Brn, Andesite Frags
							51stst Red Andesitic Volcanics
							<del>51stst Red Andesitic Frags</del>

MINERALS EXPLORATION CO.

CASPER, WYOMING		HOLE NO. AM 624	
LOCATION	ANDERSON MINE	DIAMETER	500-500 CM
COUNTY	YAVAPAI STATE AZ	PROBE TYPE	SCANT
OP.	ELEV.	READ TIME	9.332 MIN
		TIME CONSTANT	1165
DATE	2-27-78	PHONE NO.	
DEPTH DRILLED	120	CAUSE	
DEPTH LOGGED	105	DIRECTIONAL SURVEY	
FOOTAGE LOGGED	150	TEMPERATURE	
HOLE DIAMETER	5/8	OPERATOR	ERICKSON
WATER FACTOR	-	DRILLER	EREBBY
RESISTIVITY	-	CONTRACTOR	
SELF POTENTIAL	-	LAST ALLC. PT. RUN	
		FLUID LEVEL	
REMARKS			
1ST. RUN		2ND. RUN	
3RD. RUN			
4TH. RUN			
5TH. RUN			
6TH. RUN			
7TH. RUN			
8TH. RUN			
9TH. RUN			
10TH. RUN			
11TH. RUN			
12TH. RUN			
13TH. RUN			
14TH. RUN			
15TH. RUN			
16TH. RUN			
17TH. RUN			
18TH. RUN			
19TH. RUN			
20TH. RUN			

GEOPHYSICAL LOG		DEPTH	P	C	A	STRIP LOG	LITHOLOGY LOG
<div><div><div>2K=200CF</div><div>500=50CF</div><div>70</div></div><div>80</div><div>AM 625</div><div>2-27-78</div></div>							<div>Ls, wht, Rd Br Chert 15' Gry Grn Chert throughout Silicified siltst Silicified, Gry, Gry Grn Chert siltst Grn Gry Chert Ls wht, Cherty -intd Grn siltst carb siltst + lignite siltst, Tan, Red Brn Grn, Bk Silicified Chert siltst Carbonaceous Silicified Bk Layers Tan siltst Lignite Bk, Carb Trash siltst Grn, Gry Grn trace Red siltst siltst Gry + Red → weathered Volcanics? siltst Red w/ Andesitic volcanic frags</div>
		20					
		40					
		60					
		80					
		100					
		20					
		40					
		60					
		80					
		100					
		20					
		40					
		60					
		80					
		100					
		20					
		40					
		60					
		80					
		100					
		20					
		40					
		60					
		80					
		100					
		20					
		40					
		60					
		80					
		100					
		20					
		40					
		60					
		80					
		100					
		20					
		40					
		60					
		80					
		100					
		20					
		40					
		60					
		80					
		100					
		20					
		40					
		60					
		80					
		100					
		20					
		40					
		60					
		80					
		100					
		20					
		40					
		60					
		80					
		100					
		20					
		40					
		60					
		80					
		100					
		20					
		40					
		60					
		80					
		100					
		20					
		40					
		60					
		80					
		100					
		20					
		40					
		60					
		80					
		100					
		20					
		40					
		60					
		80					
		100					
		20					
		40					
		60					
		80					
		100					
		20					
		40					
		60					
		80					
		100					
		20					
		40					
		60					
		80					
		100					
		20					
		40					
		60					
		80					
		100					
		20					
		40					
		60					
		80					
		100					
		20					
		40					
		60					
		80					
		100					
		20					
		40					
		60					
		80					
		100					
		20					
		40					
		60					
		80					
		100					
		20					
		40					
		60					
		80					
		100					
		20					
		40					
		60					
		80					
		100					
		20					
		40					
		60					
		80					
		100					
		20					
		40					
		60					
		80					
		100					
		20					
		40					
		60					
		80					
		100					
		20					
		40					
		60					
		80					
		100					
		20					
		40					
		60					
		80					
		100					
		20					
		40					
		60					
		80					
		100					
		20					
		40					
		60					
		80					
		100					
		20					
		40					
		60					
		80					
		100					
		20					
		40					
		60					
		80					
		100					
		20					
		40					
		60					
		80					
		100					
		20					
		40					
		60					
		80					
		100					
		20					
		40					
		60					
		80					
		100					
		20					
		40					
		60					
		80					
		100					
		20					
		40					
		60					
		80					
		100					
		20					
		40					
		60					
		80					
		100					
		20					
		40					
		60					
		80					
		100					
		20					
		40					
		60					
		80					
		100					
		20					
		40					
		60					
		80					
		100					
		20					
		40					
		60					
		80					
		100					
		20					
		40					
		60					
		80					
		100					
		20					
		40					
		60					
		80					
		100					
		20					
		40					
		60					
		80					
		100					
		20					
		40					
		60					
		80					
		100					
		20					
		40					
		60					
		80					
		100					
		20					
		40					
		60					
		80					
		100					
		20					
		40					
		60					
		80					
		100					
		20					
		40					
		60					
		80					
		100					
		20					
		40					
		60					
		80					
		100					
		20					
		40					
		60					
		80					
		100					
		20					
		40					
		60					
		80					
		100					
		20					
		40					
		60					
		80					
		100					
		20					
		40					
		60					
		80					
		100					
		20					
		40					
		60					
		80					
		100					
		20					
		40					
		60					
		80					
		100					
		20					
		40					
		60					
		8					



GEOPHYSICAL LOG		DEPTH	P	C	A	STRIP LOG	LITHOLOGY LOG
							<div>sitst, Gry, silic, Red Brn Chert, Limy?</div> <div>sitst / Mdst, Gry Grn,</div> <div>Mdst, Grn, silty</div> <div>sitst, Lign, Gry Chert, silic</div> <div>LS, wht</div> <div>carb sitst + Lignite Blk to gry</div> <div>sitst Grn + Tan Tracete (carb) Carb</div> <div>sitst Gry Tan, Red Brn clay 10%</div> <div>sitst + Red Brn Andesite frags</div>
		20					
		40					
		60					
		80					
		00					
		20					
		40					
		60					
		80					
		00					
		20					
		40					
		60					
		80					
		00					
		20					
		40					
		60					
		80					
		00					
		20					
		40					
		60					
		80					
		00					
		20					
		40					
		60					
		80					
		00					
		20					
		40					
		60					
		80					
		00					
		20					
		40					
		60					
		80					
		00					
		20					
		40					
		60					
		80					
		00					
		20					
		40					
		60					
		80					
		00					
		20					
		40					
		60					
		80					
		00					
		20					
		40					
		60					
		80					
		00					
		20					
		40					
		60					
		80					
		00					
		20					
		40					
		60					
		80					
		00					
		20					
		40					
		60					
		80					
		00					
		20					
		40					
		60					
		80					
		00					
		20					
		40					
		60					
		80					
		00					
		20					
		40					
		60					
		80					
		00					
		20					
		40					
		60					
		80					
		00					
		20					
		40					
		60					
		80					
		00					
		20					
		40					
		60					
		80					
		00					
		20					
		40					
		60					
		80					
		00					
		20					
		40					
		60					
		80					
		00					
		20					
		40					
		60					
		80					
		00					
		20					
		40					
		60					
		80					
		00					
		20					
		40					
		60					
		80					
		00					
		20					
		40					
		60					
		80					
		00					
		20					
		40					
		60					
		80					
		00					
		20					
		40					
		60					
		80					
		00					
		20					
		40					
		60					
		80					
		00					
		20					
		40					
		60					
		80					
		00					
		20					
		40					
		60					
		80					
		00					
		20					
		40					
		60					
		80					
		00					
		20					
		40					
		60					
		80					
		00					
		20					
		40					
		60					
		80					
		00					
		20					
		40					
		60					
		80					
		00					
		20					
		40					
		60					
		80					
		00					
		20					
		40					
		60					
		80					
		00					
		20					
		40					
		60					
		80					
		00					
		20					
		40					
		60					
		80					
		00					
		20					
		40					
		60					
		80					
		00					
		20					
		40					
		60					
		80					
		00					
		20					
		40					
		60					
		80					
		00					
		20					
		40					
		60					
		80					
		00					
		20					
		40					
		60					
		80					
		00					
		20					
		40					
		60					
		80					
		00					
		20					
		40					
		60					
		80					
		00					
		20					
		40					
		60					
		80					
		00					
		20					
		40					
		60					
		80					
		00					
		20					
		40					
		60					
		80					
		00					
		20					
		40					
		60					
		80					
		00					
		20					
		40					
		60					
		80					
		00					
		20					
		40					
		60					
		80					
		00					
		20					
		40					
		60					
		80					
		00					
		20					
		40					
		60					
		80					
		00					
		20					
		40					
		60					
		80					
		00					
		20					
		40					
		60					
		80					
		00					
		20					
		40					
		60					
		80					
		00					
		20					
		40					
		60					
		80					
		00					
		20					
		40					
		60					
		80					
		00					
		20					
		40					
		60					

ELEVATION \_\_\_\_\_ NORTH \_\_\_\_\_ EAST \_\_\_\_\_ LOGGED BY \_\_\_\_\_ DATE \_\_\_\_\_  
SECTION \_\_\_\_\_ TOWNSHIP \_\_\_\_\_ RANGE \_\_\_\_\_ T.D. 150 P.D. \_\_\_\_\_

GEOPHYSICAL LOG		DEPTH	P	C	A	STRIP LOG	LITHOLOGY LOG
	148 AM 627	0					Silicified sltst, Gry Grn, Gry Chert sltst, Grn Wht calc Tuff sltst Grn Lignite, Bk sltst Red Brn Andesite or False Basement
		20					
		40					SAMPLES WASHED OVER
		60					
		80					Very Poor
		100					
		120					SAMPLES DESTROYED
		140					
		160					

[illegible]



PROJECT ANDERSON MINEHOLE SIZE 6.5"☒ AIR ☐ WATERHOLE NO. AM 628

ELEVATION \_\_\_\_\_

NORTH \_\_\_\_\_

EAST \_\_\_\_\_

LOGGED BY LUCHT DATE 14 MAR 78

SECTION \_\_\_\_\_

TOWNSHIP \_\_\_\_\_

RANGE \_\_\_\_\_

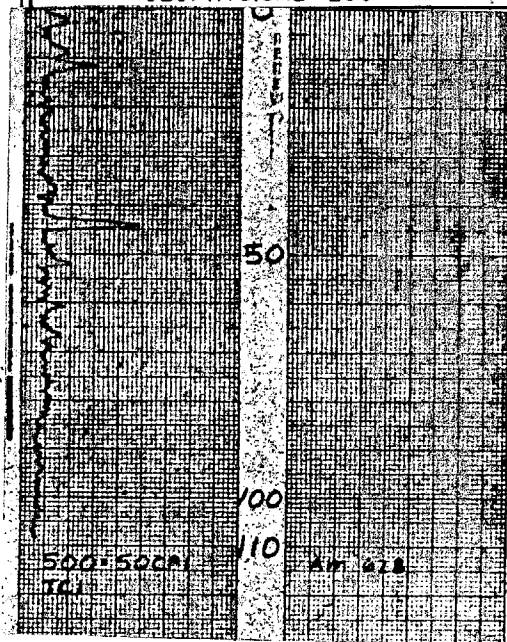
T.D. 115 P.D. 110MINERALS # 61 VENTURE DRUG

GEOPHYSICAL LOG

DEPTH P C A

STRIP  
LOG

LITHOLOGY LOG



0-25 WHITE SILICEOUS LAKEBEDS

25-40 BROWN SILT

40-65 WHITE SILICEOUS LAKEBEDS

65-105 REDDISH BROWN SILT

105-115 ANDESITIC AGGLOMERATE

TD 115

DRY HOLE

PROJECT ANDERSON MINE

**HOLE SIZE**

☒ AIR ☐ WATER

HOLE NO. AM 629

ELEVATION \_\_\_\_\_ NORTH \_\_\_\_\_

**EAST** \_\_\_\_\_

LOGGED BY K. TAYLOR DATE 4/1/78

SECTION \_\_\_\_\_ TOWNSHIP \_\_\_\_\_

**RANGE** \_\_\_\_\_

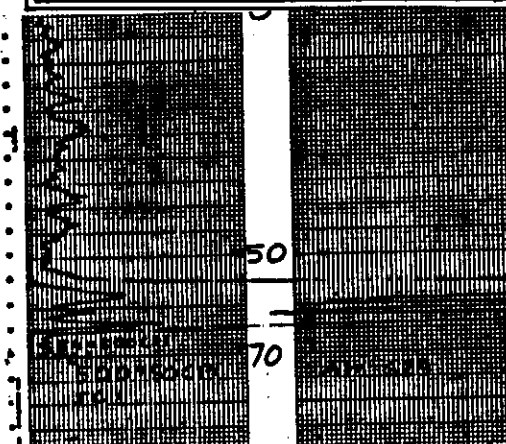
T.D. 751 P.D. \_\_\_\_\_

# GEOPHYSICAL LOG

DEPTH	P	C	A
-------	---	---	---

**STRIP**  
**LOG**

# LITHOLOGY LOG



interior green to lt. green to lt. grey green mud str.  
moderately siliceous

4 ft brown mud str.

brown mudstn.

7 brownish red mudston

**MINERALS EXPLORATION CO.**

[illegible]



GEOPHYSICAL LOG		DEPTH		P	C	A	STRIP LOG	LITHOLOGY LOG	
<div><div><div>500-500CM</div><div>TC</div></div><div>50</div><div>97</div><div>AM 630</div></div>								<div>Silicified Siltst, Gry, w/ Wht + Grn Chert</div> <div>Siltst, Yel Tan</div> <div>Wht calc Tuff + Silicified siltst</div> <div>Yel Brn + Brn Chert</div> <div>Siltst, Grn</div> <div>Lignite + Carbonaceous siltst blk to dk Gry</div> <div>Siltst Red Brn And Andesitic Volcanics Gry</div>	
		20							
		40							
		60							
		80							
		100							
		20							
		40							
		60							
		80							
		100							
		20							
		40							
		60							
		80							
		100							
		20							
		40							
		60							
		80							
		100							
		20							
		40							
		60							
		80							
		100							
		20							
		40							
		60							
		80							
		100							
		20							
		40							
		60							
		80							
		100							
		20							
		40							
		60							
		80							
		100							
		20							
		40							
		60							
		80							
		100							
		20							
		40							
		60							
		80							
		100							
		20							
		40							
		60							
		80							
		100							
		20							
		40							
		60							
		80							
		100							
		20							
		40							
		60							
		80							
		100							
		20							
		40							
		60							
		80							
		100							
		20							
		40							
		60							
		80							
		100							
		20							
		40							
		60							
		80							
		100							
		20							
		40							
		60							
		80							
		100							
		20							
		40							
		60							
		80							
		100							
		20							
		40							
		60							
		80							
		100							
		20							
		40							
		60							
		80							
		100							
		20							
		40							
		60							
		80							
		100							
		20							
		40							
		60							
		80							
		100							
		20							
		40							
		60							
		80							
		100							
		20							
		40							
		60							
		80							
		100							
		20							
		40							
		60							
		80							
		100							
		20							
		40							
		60							
		80							
		100							
		20							
		40							
		60							
		80							
		100							
		20							
		40							
		60							
		80							
		100							
		20							
		40							
		60							
		80							
		100							
		20							
		40							
		60							
		80							
		100							
		20							
		40							
		60							
		80							
		100							
		20							
		40							
		60							
		80							
		100							
		20							
		40							
		60							
		80							
		100							
		20							
		40							
		60							
		80							
		100							
		20							
		40							
		60							
		80							
		100							
		20							
		40							
		60							
		80							
		100							
		20							
		40							
		60							
		80							
		100							
		20							
		40							
		60							
		80							
		100							
		20							
		40							
		60							
		80							
		100							
		20							
		40							
		60							
		80							
		100							
		20							
		40							
		60							
		80							
		100							
		20							
		40							
		60							
		80							
		100							
		20							
		40							
		60							
		80							
		100							
		20							
		40							
		60							
		80							
		100							
		20							
		40							
		60							
		80							
		100							
		20							
		40							
		60							
		80							
		100							
		20							
		40							
		60							
		80							
		100							
		20							
		40							
		60							
		80							
		100							
		20							
		40							
		60							
		80							
		100							
		20							
		40							
		60							
		80							
		100							
		20							
		40							
		60							
		80							
		100							
		20							
		40							
		60							
		80							
		100							
		20							
		40							
		60							
		80							
		100							
		20							
		40							