



CONTACT INFORMATION
Mining Records Curator
Arizona Geological Survey
3550 N. Central Ave, 2nd floor
Phoenix, AZ, 85012
602-771-1601
<http://www.azgs.az.gov>
inquiries@azgs.az.gov

The following file is part of the Anderson Mine Collection

ACCESS STATEMENT

These digitized collections are accessible for purposes of education and research. We have indicated what we know about copyright and rights of privacy, publicity, or trademark. Due to the nature of archival collections, we are not always able to identify this information. We are eager to hear from any rights owners, so that we may obtain accurate information. Upon request, we will remove material from public view while we address a rights issue.

CONSTRAINTS STATEMENT

The Arizona Geological Survey does not claim to control all rights for all materials in its collection. These rights include, but are not limited to: copyright, privacy rights, and cultural protection rights. The User hereby assumes all responsibility for obtaining any rights to use the material in excess of "fair use."

The Survey makes no intellectual property claims to the products created by individual authors in the manuscript collections, except when the author deeded those rights to the Survey or when those authors were employed by the State of Arizona and created intellectual products as a function of their official duties. The Survey does maintain property rights to the physical and digital representations of the works.

QUALITY STATEMENT

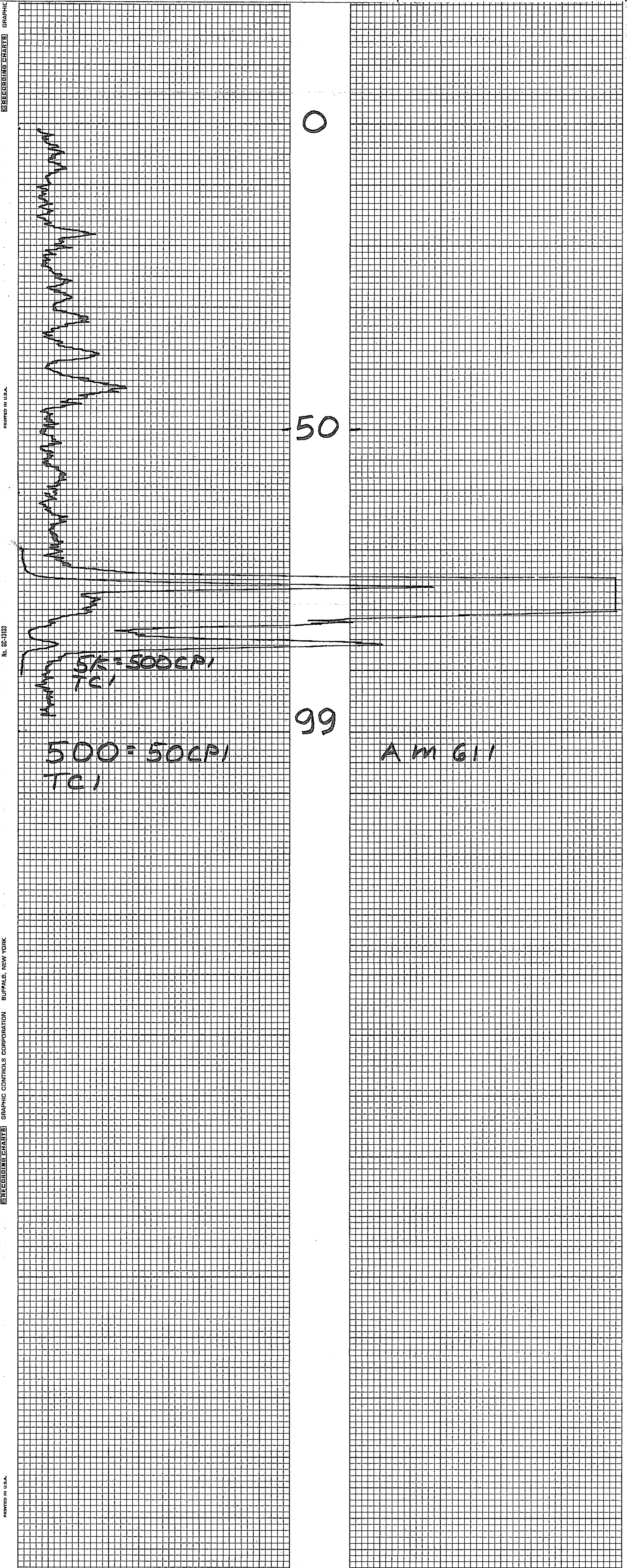
The Arizona Geological Survey is not responsible for the accuracy of the records, information, or opinions that may be contained in the files. The Survey collects, catalogs, and archives data on mineral properties regardless of its views of the veracity or accuracy of those data.

MINERALS EXPLORATION CO.

CASPER, WYOMING

HOLE NO. AM 611

| | | | | | |
|-------------------------|-----------|----------|----------|---------------------|-----------|
| LOCATION ANDERSON MINE | | | | GAMMA SCALE | 500=50CPI |
| COUNTY YAVAPAI STATE AZ | | | | PROBE TYPE | SCINT |
| GP. ELEV. | | | | K-FACTOR | 6.00 F-5 |
| SEC. TWP. RGE. | | | | DEAD TIME | 9.2ms |
| DATE | 3-16-78 | | | TIME CONSTANT | 1 |
| DEPTH DRILLED | 100 | | | PROBE DIA. | 1 5/8 |
| DEPTH LOGGED | 99 | | | CALIPER | - |
| FOOTAGE LOGGED | | | | DIRECTIONAL SURVEY | - |
| HOLE DIAMETER | 6 | | | TEMPERATURE | - |
| WATER FACTOR | - | | | OPERATOR | ERICKSON |
| RESISTIVITY | - | | | DRILLER | DENNIS |
| SELF POTENTIAL | - | | | CONTRACTOR | VENTURE |
| | OHMS/INCH | | | LAST A.E.C. PIT RUN | 2-24-78 |
| | M.V./IN. | | | FLUID LEVEL | |
| RERUNS | 1ST. RUN | 2ND. RUN | 3RD. RUN | REMARKS: | |
| BOTTOM | 80 | | | | |
| TOP | 65 | | | | |
| TOTAL FEET | 15 | | | | |
| SCALE RUN | 5K | | | | |



RECORDING CHARTS GRAPHIC

PRINTED IN U.S.A.

No. 50-1313

BUFFALO, NEW YORK

GRAPHIC CONTROLS CORPORATION

RECORDING CHARTS

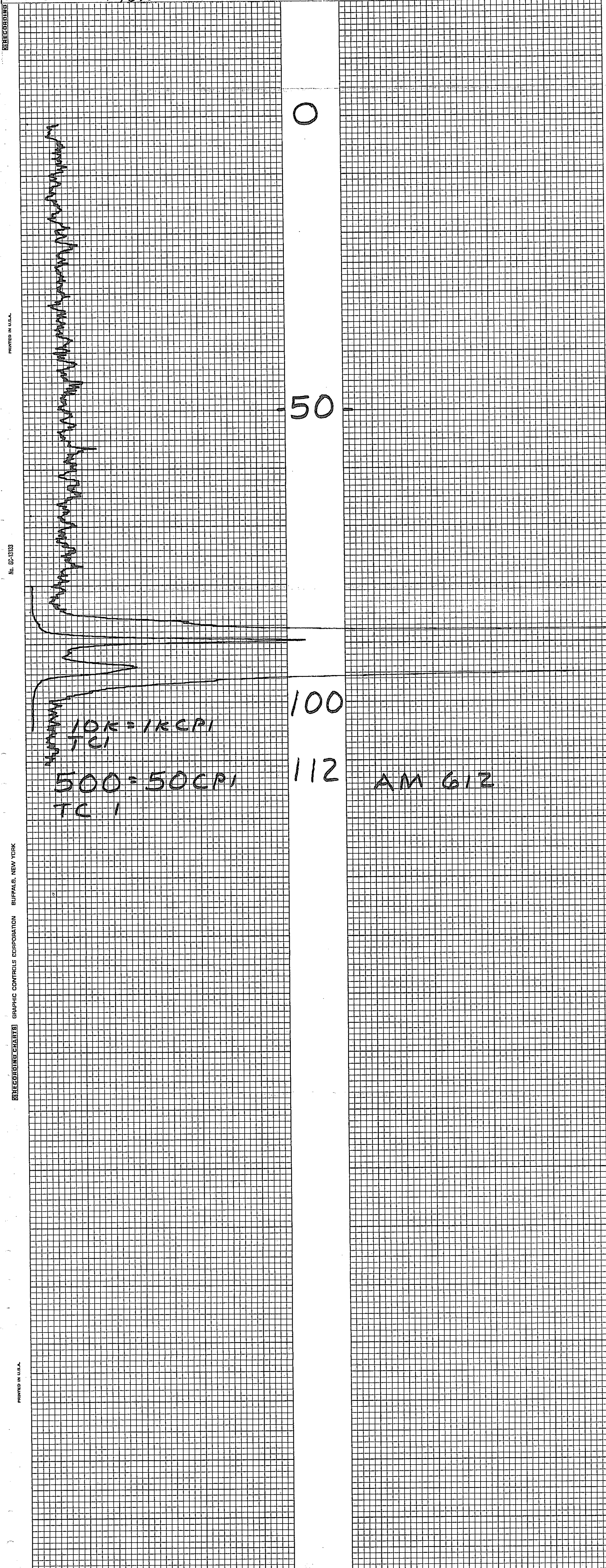
PRINTED IN U.S.A.

MINERALS EXPLORATION CO.

CASPER, WYOMING

HOLE NO. Am 612

| | | | | | |
|-------------------------|-------------|----------|----------|-----------------------------|-----------|
| LOCATION ANDERSON MINE | | | | GAMMA SCALE | 500=50CPI |
| COUNTY YAVAPAI STATE AZ | | | | PROBE TYPE | SCINT |
| GP. ELEV. | | | | K-FACTOR | 6.00E-5 |
| SEC. TWP. RGE. | | | | DEAD TIME | 9.245 |
| DATE | 3-16-78 | | | TIME CONSTANT | 1 |
| DEPTH DRILLED | 115 | | | PROBE DIA. | 1 5/8 |
| DEPTH LOGGED | 112 | | | CALIPER | - |
| FOOTAGE LOGGED | | | | DIRECTIONAL SURVEY | - |
| HOLE DIAMETER | 6 | | | TEMPERATURE | - |
| WATER FACTOR | - | | | OPERATOR | ERICKSON |
| RESISTIVITY | - OHMS/INCH | | | DRILLER | DEANIS |
| SELF POTENTIAL | - M.V./IN. | | | CONTRACTOR | VENTURE |
| RERUNS | 1ST. RUN | 2ND. RUN | 3RD. RUN | LAST A.E.C. PIT RUN 2-24-78 | |
| BOTTOM | 105 | | | FLUID LEVEL | |
| TOP | 80 | | | REMARKS: | |
| TOTAL FEET | 25 | | | | |
| SCALE RUN | 10K | | | | |



RECORDING

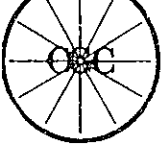
PRINTED IN U.S.A.

No. 65-13133

BUFFALO, NEW YORK

GRAPHIC CONTROLS CORPORATION

PRINTED IN U.S.A.



C-366-E SP 11748B

COMPANY MINERALS EXPLORATION

BORE HOLE AM 613

AREA ANDERSON MINE

COUNTY YAVAPAI

STATE ARIZONA

SECTION TOWNSHIP RANGE LOG MEASURED FROM GROUND LEVEL

DATE 4-1-78

HOLE NO. AM 613
SEC. TWP. RANGE
AREA ANDERSON MINE
COUNTY YAVAPAI
STATE ARIZONA
COMPANY MINERALS EXPLOR
DATE 4-1-78
TOTAL FOOTAGE LOGGED 58'

I.D. DRILLER 60
BIT SIZE 6.5 in.
CASING -
BORE HOLE FLUID DRY
DENSITY
VISCOSITY
RESISTIVITY
OPERATOR M. DODGE
UNIT NO. 7750
LOCATION WICKENBERG, AZ.

| | | | | | | | | | |
|--------------------------|------------------|--|---------------|-------|---------------|-------|---------------|-------------------|----------|
| INITIAL RUN | | GAMMA RERUNS (Initial run offscale) | | | | | | | |
| T.D. LOGGED | 58' | SCALE | | SCALE | | SCALE | | DRIVE | TIME IN |
| GAMMA SCALE | 500 Cps. Per In. | T.C. | LOGGING SPEED | T.C. | LOGGING SPEED | T.C. | LOGGING SPEED | STAND BY | TIME OUT |
| TIME CONSTANT | 60 | FROM | TO | FROM | TO | FROM | TO | LOGGING | |
| CALIBRATION & PROBE DATA | | TOTAL | | TOTAL | | TOTAL | | TOTAL | |
| SOURCE NO. | SOURCE VALUE | TOTAL | | TOTAL | | TOTAL | | ROUNDTRIP MILEAGE | Miles |
| PROBE NO. | 9055-23 | TOTAL | | TOTAL | | TOTAL | | CHARGEABLE | Hrs. |
| DETECTOR | NAI SCINT | TOTAL | | TOTAL | | TOTAL | | STANDBY | |
| DEAD TIME | 1.075 μSEC. | TOTAL | | TOTAL | | TOTAL | | | |
| WATER FACTOR | 1.00 | TOTAL | | TOTAL | | TOTAL | | | |
| RES. SCALE | | TOTAL | | TOTAL | | TOTAL | | | |
| S.P. | | TOTAL | | TOTAL | | TOTAL | | | |

SELF POTENTIAL

DENSITY

NATURAL GAMMA RAY
COUNTS PER SECOND

RESISTANCE
OHMS

COMPU-LOG V2.5L4 DATE 04-01-78 HOLE #AM 613

GAMMA

S.P.

RES.

0 0 0

500 CPI

50

10 MV/IN

10 OHMS/IN

GAMMA

S.P.

RES.

0 0 0

AM 613

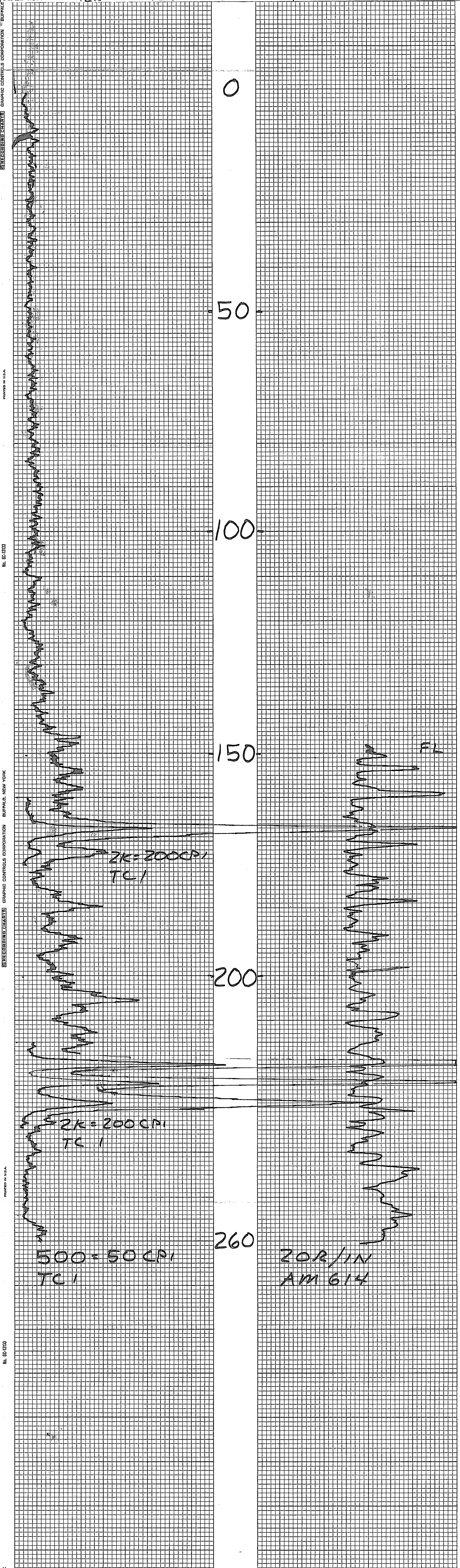
MIKE DODGE

MINERALS EXPLORATION CO.

CASPER, WYOMING

HOLE NO. AM 614

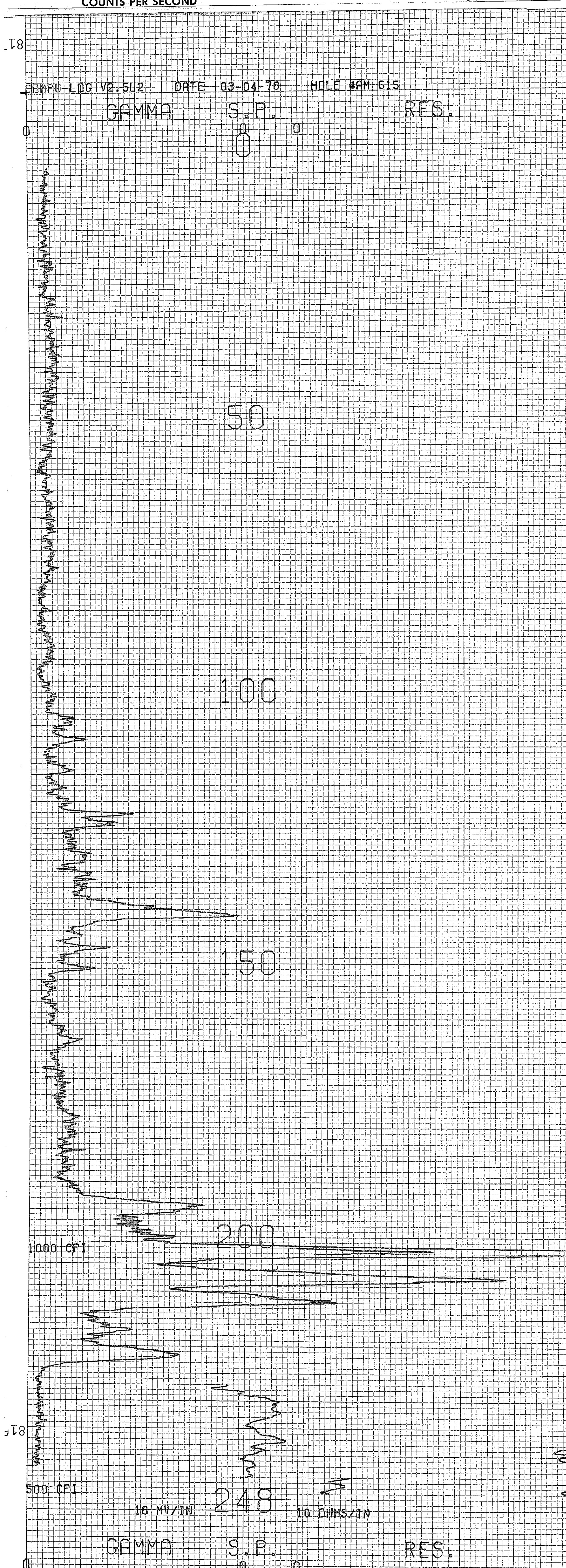
| | | | | | |
|---------------------------|----------|----------|----------|---------------------|-----------|
| LOCATION ANDERSON MINE | | | | GAMMA SCALE | 500=50CPI |
| COUNTY YAVAPAI STATE AZ | | | | PROBE TYPE | SCINT |
| GP. | | | | K-FACTOR | 6.00 E-S |
| ELEV. | | | | DEAD TIME | 9.4 MS |
| SEC. TWP. RGE. | | | | TIME CONSTANT | 1 |
| DATE 3-3-78 | | | | PROBE DIA. | 1 5/8 |
| DEPTH DRILLED 260 | | | | CALIPER | - |
| DEPTH LOGGED 260 | | | | DIRECTIONAL SURVEY | - |
| FOOTAGE LOGGED | | | | TEMPERATURE | - |
| HOLE DIAMETER 5/8 | | | | OPERATOR | ERICKSON |
| WATER FACTOR 1.2 | | | | DRILLER | JERRY |
| RESISTIVITY 20 OHMS/INCH | | | | CONTRACTOR | HARRIS |
| SELF POTENTIAL - M.V./IN. | | | | LAST A.E.C. PIT RUN | 2-24-78 |
| | | | | FLUID LEVEL | 150 |
| RERUNS | 1ST. RUN | 2ND. RUN | 3RD. RUN | REMARKS: | |
| BOTTOM | 235 | 175 | | | |
| TOP | 215 | 160 | | | |
| TOTAL FEET | 20 | 15 | | | |
| SCALE RUN | 2K | 2K | | | |



| | | | | | | |
|---------------------------------------|--|----------------|--|---------------|---|-----------------------|
| C-366-E SP 11748B | | DATE 3-4-78 | SEC. Aml615 | TWP. RANGE | BIT SIZE 240 | CASING 5 1/8 In. |
| COMPANY MINERALS EXPLORATION | | | AREA ANDERSON MINE | | BORE HOLE FLUID H ₂ O + mud | |
| BORE HOLE AM 615 | | | COUNTRY YAVAPAI | | DENSITY 120 | |
| AREA ANDERSON MINE | | | STATE ARIZONA | | RESISTIVITY | |
| COUNTY YAVAPAI | | | LOG MEASURED FROM GROUND LEVEL | | OPERATOR M. DODGE | |
| SECTION | | | TOWNSHIP | | UNIT NO. 7750 | |
| RANGE | | | TOTAL FOOTAGE LOGGED 248' | | LOCATION WICKENBURG, AZ. | |
| INITIAL RUN | | | GAMMA RERUNS (Initial run offscale) | | | STAND BY 0.25 Hrs. |
| T.D. LOGGED 248' | | | SCALE | | | TIME OUT 1245 |
| GAMMA SCALE 500 Cps. Per In. | | | T.C. LOGGING SPEED Ft./Min. | | | LOGGING 0.25 Hrs. |
| TIME CONSTANT 60 | | | FROM | | | 0.75 Hrs. |
| CALIBRATION & PROBE DATA | | | TO | | | TOTAL 1.25 Hrs. |
| SOURCE NO. | | | TOTAL | | | ROUND TRIP Mileage |
| SOURCE VALUE | | | TOTAL | | | CHARGEABLE STANDBY |
| PROBE NO. 9055-46 | | | PROBE SIZE 1 7/8 In. | | | |
| DETECTOR NAI SCINT. XTAL 7/8" x 4" | | | K FACTOR 5.59 x 10 ⁻⁶ | | | |
| DEAD TIME > 1.5 SEC. | | | WATER FACTOR 1.135 | | | |
| AIR FACTOR 1.00 | | | RES. SCALE 10 ohms per 1 inch | | | |
| S.P. 10 Mv/In. | | | S.P. 10 Mv/In. | | | |

SELF POTENTIAL

DENSITY

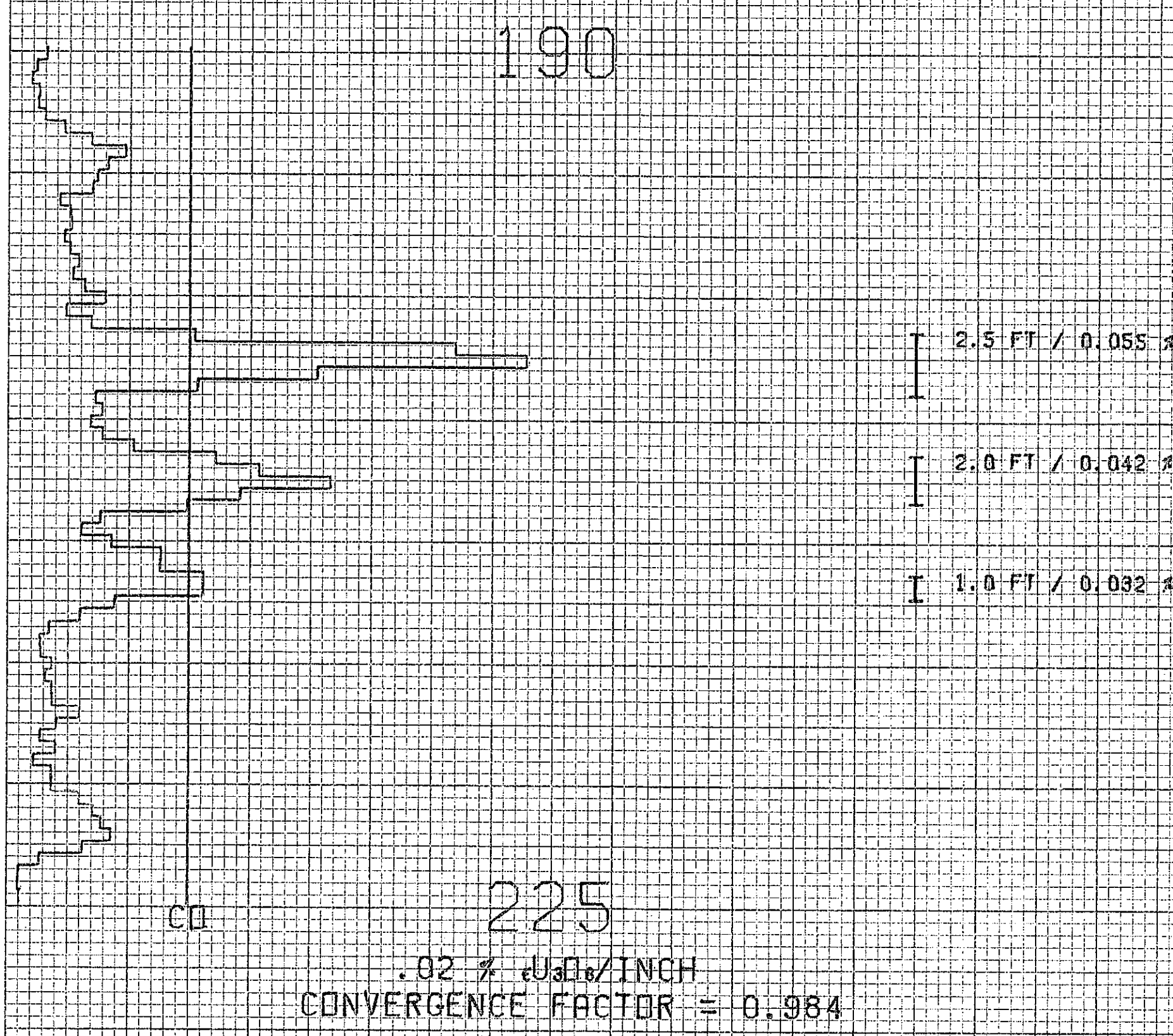
NATURAL GAMMA RAY
COUNTS PER SECONDRESISTANCE
OHMS

AM 615

MIKE DODGE

ORE GRADE CALCULATION

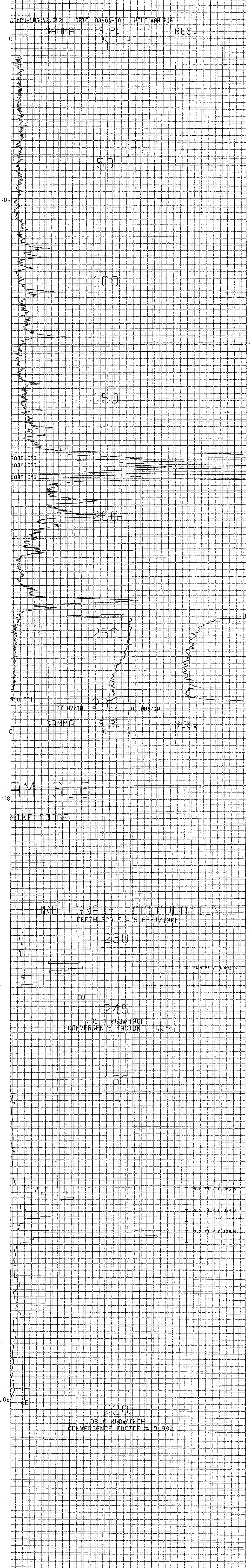
DEPTH SCALE = 5 FEET/INCH



| | | | | | | | | | | | | |
|--------------------------|--|------|--------|---------------------------------|---------|-------------------|----------------------|-----------------|------------------------|---------|-----------|--|
| C-366-E SP 17748B | | DATE | 3-4-78 | AREA | AM 616 | RANGE | 280 | BIT SIZE | 5/8 | CASING | - | |
| COMPANY | | | | ANDERSON MINE | YAVAPAI | STATE | ARIZONA | BORE HOLE FLUID | H ₂ O - MUD | DENSITY | VISCOSITY | |
| BORE HOLE | | | | MINERALS EXPLORATION | YAVAPAI | RESISTIVITY | | | | | | |
| AREA | | | | AM 616 | ARIZONA | COMPANY | MINERALS EXPLOR. | OPERATOR | M. DODGE | | | |
| COUNTY | | | | YAVAPAI | STATE | DATE | 3-4-78 | UNIT NO. | 7750 | | | |
| SECTION | | | | TOWNSHIP | RANGE | LOG MEASURED FROM | TOTAL FOOTAGE LOGGED | LOCATION | WICKENSBERG AZ | | | |
| INITIAL RUN | | | | GAMMA RUNS (Initial run offset) | | | | DRIVE | 0.25 | | | |
| T.D. LOGGED | | | | SCALE | | | | STAND BY | 1600 | | | |
| GAMMA SCALE | | | | LOGGING SPEED | | | | LOGGING SPEED | 1645 | | | |
| TIME CONSTANT | | | | FROM | | | | TO | TOTAL | | | |
| CALIBRATION & PROBE DATA | | | | TO | | | | TO | ROUNDTRIP | | | |
| SOURCE NO. | | | | TOTAL | | | | TO | MILEAGE | | | |
| PROBE NO. | | | | PROBE SIZE | | | | TRACK USED: #3 | | | | |
| DETECTOR | | | | TYPE & SIZE | | | | | | | | |
| DEAD TIME | | | | K FACTOR | | | | | | | | |
| WATER FACTOR | | | | AIR FACTOR | | | | | | | | |
| RES. SCALE | | | | S.P. | | | | | | | | |
| S.P. | | | | OHMS | | | | | | | | |

SELF POTENTIAL
NATURAL GAMMA RAY
COUNTS PER SECOND

DENSITY
RESISTANCE
OHMS

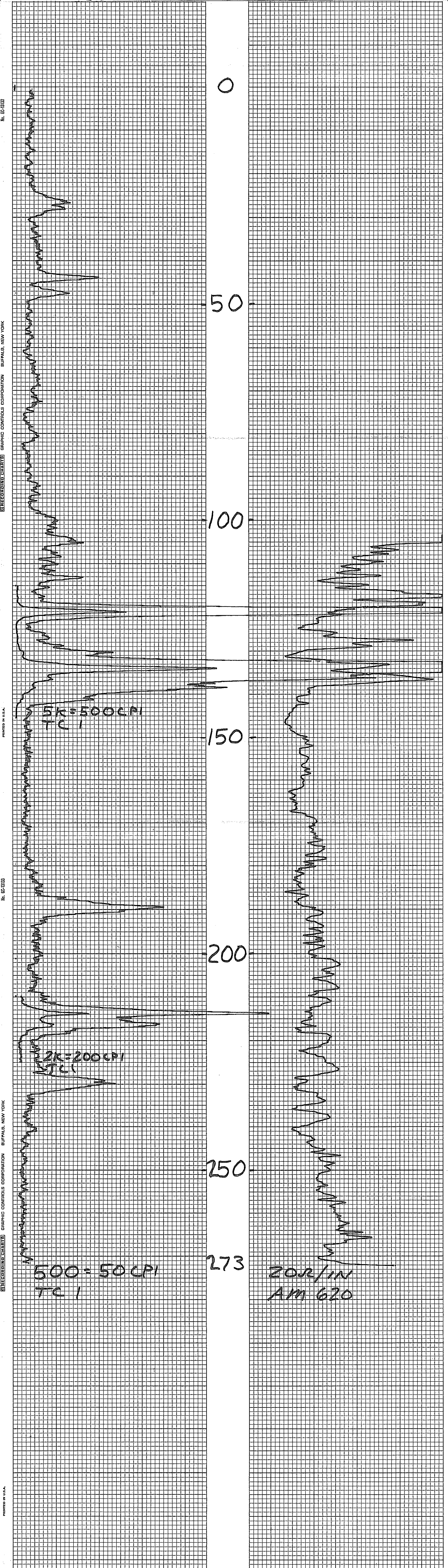


MINERALS EXPLORATION CO.

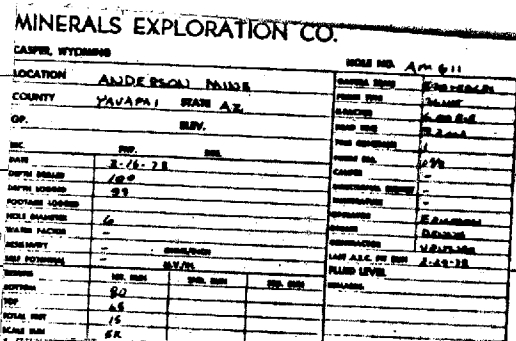
CASPER, WYOMING

HOLE NO. AM 620

| | | | | | |
|-----------------------------------|--|--|--|---------------------|-----------|
| LOCATION ANDERSON MINE | | | | GAMMA SCALE | 500=50CPI |
| COUNTY YAVAPAI STATE AZ | | | | PROBE TYPE | SCINT |
| GP. ELEV. | | | | K-FACTOR | 6.00E-5 |
| SEC. TWP. RGE. | | | | DEAD TIME | 9.411S |
| DATE 3-3-78 | | | | TIME CONSTANT | 1 |
| DEPTH DRILLED 280 | | | | PROBE DIA. | 1 5/8 |
| DEPTH LOGGED 273 | | | | CALIPER | — |
| FOOTAGE LOGGED | | | | DIRECTIONAL SURVEY | — |
| HOLE DIAMETER 5 1/8 | | | | TEMPERATURE | — |
| WATER FACTOR 1.2 | | | | OPERATOR | ERICKSON |
| RESISTIVITY 20 OHMS/INCH | | | | DRILLER | JIM |
| SELF POTENTIAL — M.V./IN. | | | | CONTRACTOR | COBRA |
| RERUNS 1ST. RUN 2ND. RUN 3RD. RUN | | | | LAST A.E.C. PIT RUN | 2-24-78 |
| BOTTOM 225 145 | | | | FLUID LEVEL | 105 |
| TOP 210 115 | | | | REMARKS: | |
| TOTAL FEET 15 30 | | | | | |
| SCALE RUN 2K 5K | | | | | |



| | | | | | | | | |
|-----------------|--|-------|---|---|---|-----------|---------------|--|
| GEOPHYSICAL LOG | | DEPTH | P | C | A | STRIP LOG | LITHOLOGY LOG | |
|-----------------|--|-------|---|---|---|-----------|---------------|--|



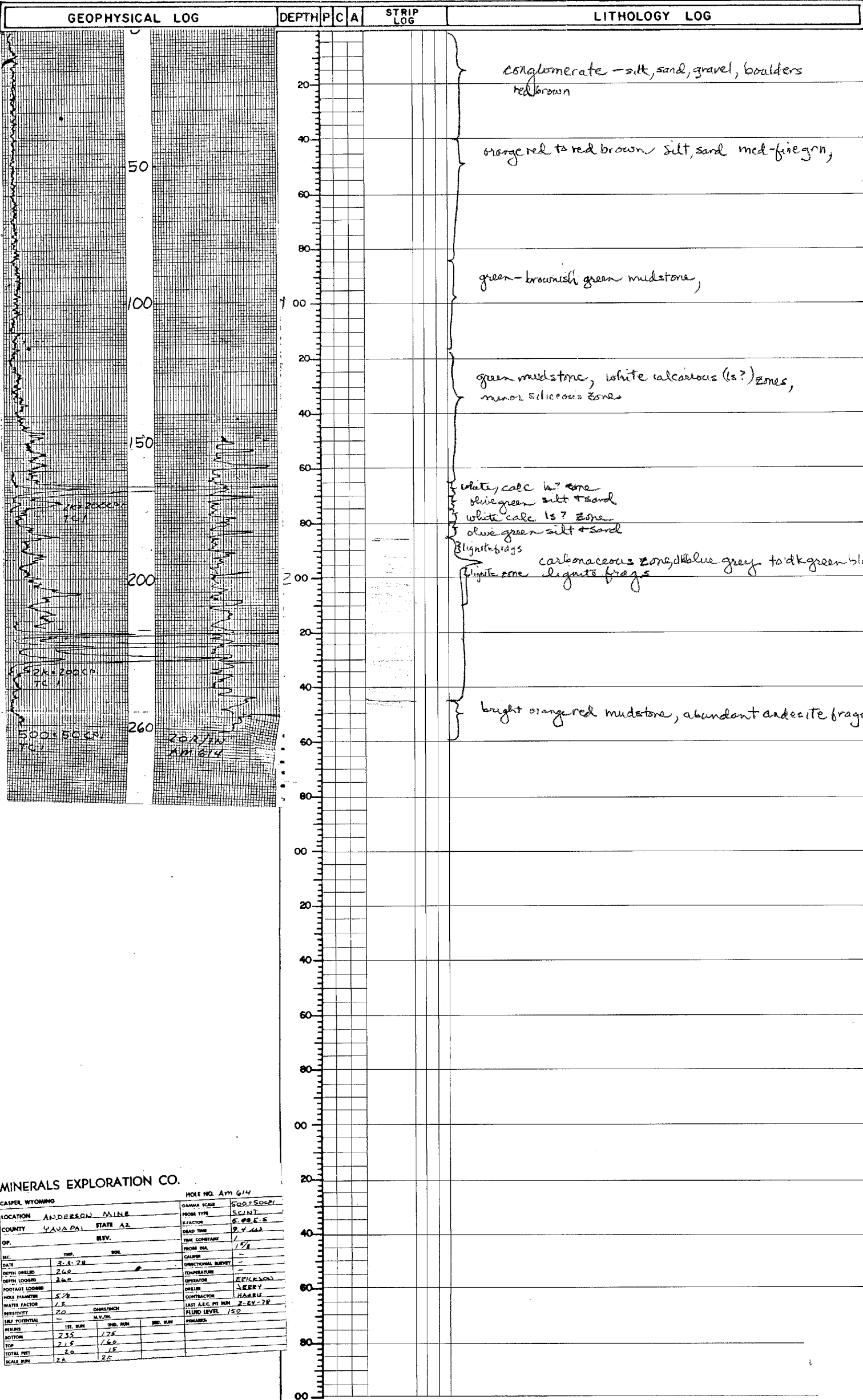
P.D. _____

[illegible]

PROJECT ANDERSON MINE HOLE SIZE ☒ AIR ☐ WATER HOLE NO. AM 613
ELEVATION NORTH EAST LOGGED BY K. TAYLOR DATE 4/1/78
SECTION TOWNSHIP RANGE T.D. 65 P.D.

| GEOPHYSICAL LOG | DEPTH | P | C | A | STRIP LOG | LITHOLOGY LOG |
|-----------------|-------|---|---|---|-----------|--|
| | 0 | | | | | brownish greens to lt green mudstn |
| | 20 | | | | | |
| | 40 | | | | | |
| | 50 | | | | | greenish brown mudstn. |
| | 60 | | | | | |
| | 70 | | | | | brownish red mudstn, dk greyish red andesite |
| | 80 | | | | | |
| | 90 | | | | | |
| | 100 | | | | | |
| | 110 | | | | | |

| | | | |
|----------------------|--|---------------|-----|
| 4-1-78 | | Anderson Mine | Day |
| Minerals Exploration | | Anderson | Day |
| Am 613 | | Anderson | Day |
| Anderson Mine | | Anderson | Day |
| Yankee | | Anderson | Day |
| F. Anderson | | Anderson | Day |
| Ground Level | | Anderson | Day |
| 51 | | Anderson | Day |
| 52 | | Anderson | Day |
| 53 | | Anderson | Day |
| 54 | | Anderson | Day |
| 55 | | Anderson | Day |
| 56 | | Anderson | Day |
| 57 | | Anderson | Day |
| 58 | | Anderson | Day |
| 59 | | Anderson | Day |
| 60 | | Anderson | Day |
| 61 | | Anderson | Day |
| 62 | | Anderson | Day |
| 63 | | Anderson | Day |
| 64 | | Anderson | Day |
| 65 | | Anderson | Day |
| 66 | | Anderson | Day |
| 67 | | Anderson | Day |
| 68 | | Anderson | Day |
| 69 | | Anderson | Day |
| 70 | | Anderson | Day |
| 71 | | Anderson | Day |
| 72 | | Anderson | Day |
| 73 | | Anderson | Day |
| 74 | | Anderson | Day |
| 75 | | Anderson | Day |
| 76 | | Anderson | Day |
| 77 | | Anderson | Day |
| 78 | | Anderson | Day |
| 79 | | Anderson | Day |
| 80 | | Anderson | Day |
| 81 | | Anderson | Day |
| 82 | | Anderson | Day |
| 83 | | Anderson | Day |
| 84 | | Anderson | Day |
| 85 | | Anderson | Day |
| 86 | | Anderson | Day |
| 87 | | Anderson | Day |
| 88 | | Anderson | Day |
| 89 | | Anderson | Day |
| 90 | | Anderson | Day |
| 91 | | Anderson | Day |
| 92 | | Anderson | Day |
| 93 | | Anderson | Day |
| 94 | | Anderson | Day |
| 95 | | Anderson | Day |
| 96 | | Anderson | Day |
| 97 | | Anderson | Day |
| 98 | | Anderson | Day |
| 99 | | Anderson | Day |
| 100 | | Anderson | Day |



MINERALS EXPLORATION CO.

CASPER, WYOMING

HOLE NO. AM 614

LOCATION ANDERSON MINE

COUNTY YUVAAPAI STATE AZ

OP. REV.

DATE 3-3-78

DEPTH DRILLED 260

DEPTH LOGGED 260

FOOTAGE LOGGED

WATER FACTOR 1.5

RESISTIVITY 2.0

TEMPERATURE

DRILLER HARRY

CONTRACTOR HARRY

LAST REC. PT. RUN 2-24-78

FLUID LEVEL 150

PERMITS

1ST RUN 2.5

2ND RUN 2.5

3RD RUN

4TH RUN

5TH RUN

6TH RUN

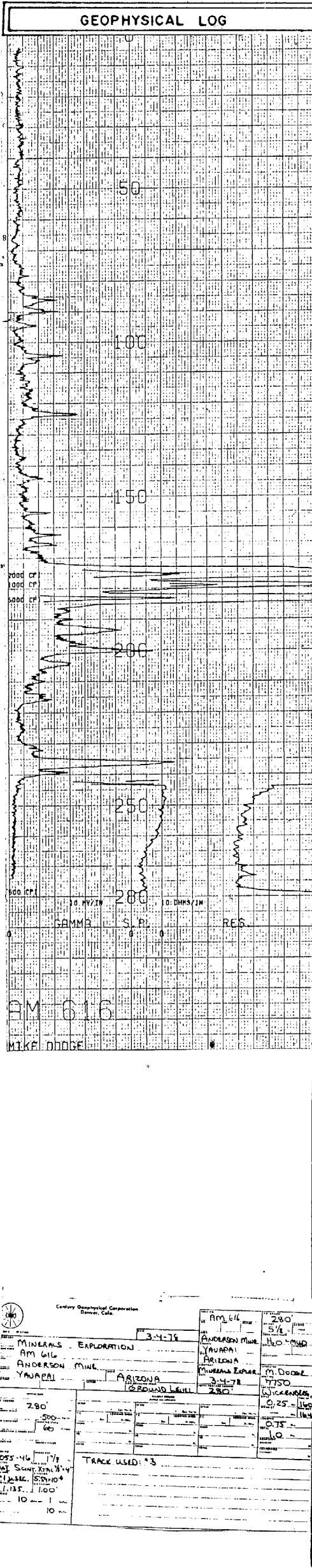
7TH RUN


8TH RUN

9TH RUN

10TH RUN

SECTION _____ TOWNSHIP _____ RANGE _____ T.D. 260 P.D. _____

| GEOPHYSICAL LOG | DEPTH | P | C | A | STRIP LOG | LITHOLOGY LOG |
|---|-------|---|---|---|-----------|---|
|  | | | | | | <p>Brown silt, sand, gravel</p> <p>green, olive green, greenish brown to lt grey brn mudstones, calcareous, minor siliceous zones</p> <p>Carbonaceous zone, dk grey, black lignite grey brown, grey green mudstones, lignitic zones, lignite frags (interbedded)</p> <p>brown-greenish brown mudstones w/ med grn sand</p> <p>lt grey volcanics, waxy look w/ black flecks to lt grey tuffaceous frags, red andesite frags, host block volcanic frags</p> |



Century Geophysical Corporation
Denver, Colo.

| | | |
|------------------------|---------------|--------------|
| MINERALS - EXPLORATION | AM 616 | 280' |
| AM 616 | 3-4-78 | 5/1 |
| ANDERSON MINE | ANDERSON MINE | 110' - 1150' |
| YAVAPAI | YAVAPAI | 1150' |
| ARIZONA | ARIZONA | 1150' |
| MINERALS EXPLOR. | M. DOONE | 1150' |
| 3-4-78 | 280' | 0.25 - 1150' |
| GROUND LEVEL | 280' | 0.75 - 1150' |
| 280' | | 1.00 - 1150' |
| 500' | | |
| 1000' | | |
| 2000' | | |

TRACK USED: 13

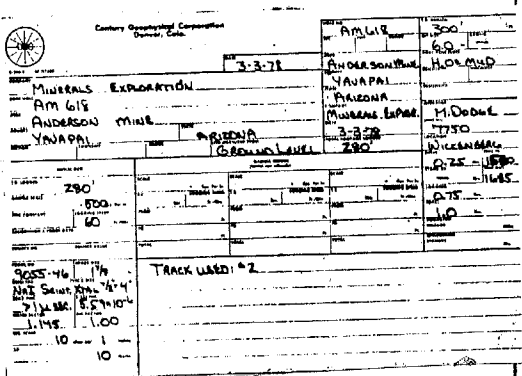
| GEOPHYSICAL LOG | | | DEPTH | P | C | A | STRIP LOG | LITHOLOGY LOG |
|-----------------|--|--|-------|---|---|---|-----------|--|
| | | | 0 | | | | | brown silt, sand, gravel |
| | | | 20 | | | | | gray brown mudst |
| | | | 40 | | | | | |
| | | | 50 | | | | | olive green to brown green mudstone |
| | | | 60 | | | | | siliceous zones, white calc ls? zones |
| | | | 80 | | | | | white calc mudst. layers |
| | | | 100 | | | | | brownish orange chert |
| | | | 120 | | | | | white calc layers |
| | | | 140 | | | | | |
| | | | 160 | | | | | white calcareous layers |
| | | | 180 | | | | | carbonaceous zone; grey black, blue grey mudstones, lignitic zones |
| | | | 200 | | | | | lignite frags |
| | | | 220 | | | | | lignite frags |
| | | | 240 | | | | | |
| | | | 260 | | | | | red brown mudstone |
| | | | 280 | | | | | green mudstone |
| | | | 300 | | | | | brown to green-brown mudstone |
| | | | 320 | | | | | blue grey mudst. and med grn. sand (carb.?) |
| | | | 340 | | | | | tan mudst and med grn sand |
| | | | 360 | | | | | brown red mudst. med grn. sand |
| | | | 380 | | | | | red mudst.; arkosite frags |
| | | | 400 | | | | | |
| | | | 420 | | | | | |
| | | | 440 | | | | | |
| | | | 460 | | | | | |
| | | | 480 | | | | | |
| | | | 500 | | | | | |

Century Geophysical Corporation
Denver, Colo.

AM 617 305
3-4-78
ANDERSON MINE
YAVAPAI
ARIZONA
MINERALS EXPLOR.

MIKE DODGE
JANUARY 1950
JULY 1950
OCT 1950
FEB 1951
MAY 1951
AUG 1951
NOV 1951
FEB 1952
MAY 1952
AUG 1952
NOV 1952
FEB 1953
MAY 1953
AUG 1953
NOV 1953
FEB 1954
MAY 1954
AUG 1954
NOV 1954
FEB 1955
MAY 1955
AUG 1955
NOV 1955
FEB 1956
MAY 1956
AUG 1956
NOV 1956
FEB 1957
MAY 1957
AUG 1957
NOV 1957
FEB 1958
MAY 1958
AUG 1958
NOV 1958
FEB 1959
MAY 1959
AUG 1959
NOV 1959
FEB 1960
MAY 1960
AUG 1960
NOV 1960
FEB 1961
MAY 1961
AUG 1961
NOV 1961
FEB 1962
MAY 1962
AUG 1962
NOV 1962
FEB 1963
MAY 1963
AUG 1963
NOV 1963
FEB 1964
MAY 1964
AUG 1964
NOV 1964
FEB 1965
MAY 1965
AUG 1965
NOV 1965
FEB 1966
MAY 1966
AUG 1966
NOV 1966
FEB 1967
MAY 1967
AUG 1967
NOV 1967
FEB 1968
MAY 1968
AUG 1968
NOV 1968
FEB 1969
MAY 1969
AUG 1969
NOV 1969
FEB 1970
MAY 1970
AUG 1970
NOV 1970
FEB 1971
MAY 1971
AUG 1971
NOV 1971
FEB 1972
MAY 1972
AUG 1972
NOV 1972
FEB 1973
MAY 1973
AUG 1973
NOV 1973
FEB 1974
MAY 1974
AUG 1974
NOV 1974
FEB 1975
MAY 1975
AUG 1975
NOV 1975
FEB 1976
MAY 1976
AUG 1976
NOV 1976
FEB 1977
MAY 1977
AUG 1977
NOV 1977
FEB 1978
MAY 1978
AUG 1978
NOV 1978
FEB 1979
MAY 1979
AUG 1979
NOV 1979
FEB 1980
MAY 1980
AUG 1980
NOV 1980
FEB 1981
MAY 1981
AUG 1981
NOV 1981
FEB 1982
MAY 1982
AUG 1982
NOV 1982
FEB 1983
MAY 1983
AUG 1983
NOV 1983
FEB 1984
MAY 1984
AUG 1984
NOV 1984
FEB 1985
MAY 1985
AUG 1985
NOV 1985
FEB 1986
MAY 1986
AUG 1986
NOV 1986
FEB 1987
MAY 1987
AUG 1987
NOV 1987
FEB 1988
MAY 1988
AUG 1988
NOV 1988
FEB 1989
MAY 1989
AUG 1989
NOV 1989
FEB 1990
MAY 1990
AUG 1990
NOV 1990
FEB 1991
MAY 1991
AUG 1991
NOV 1991
FEB 1992
MAY 1992
AUG 1992
NOV 1992
FEB 1993
MAY 1993
AUG 1993
NOV 1993
FEB 1994
MAY 1994
AUG 1994
NOV 1994
FEB 1995
MAY 1995
AUG 1995
NOV 1995
FEB 1996
MAY 1996
AUG 1996
NOV 1996
FEB 1997
MAY 1997
AUG 1997
NOV 1997
FEB 1998
MAY 1998
AUG 1998
NOV 1998
FEB 1999
MAY 1999
AUG 1999
NOV 1999
FEB 2000
MAY 2000
AUG 2000
NOV 2000
FEB 2001
MAY 2001
AUG 2001
NOV 2001
FEB 2002
MAY 2002
AUG 2002
NOV 2002
FEB 2003
MAY 2003
AUG 2003
NOV 2003
FEB 2004
MAY 2004
AUG 2004
NOV 2004
FEB 2005
MAY 2005
AUG 2005
NOV 2005
FEB 2006
MAY 2006
AUG 2006
NOV 2006
FEB 2007
MAY 2007
AUG 2007
NOV 2007
FEB 2008
MAY 2008
AUG 2008
NOV 2008
FEB 2009
MAY 2009
AUG 2009
NOV 2009
FEB 2010
MAY 2010
AUG 2010
NOV 2010
FEB 2011
MAY 2011
AUG 2011
NOV 2011
FEB 2012
MAY 2012
AUG 2012
NOV 2012
FEB 2013
MAY 2013
AUG 2013
NOV 2013
FEB 2014
MAY 2014
AUG 2014
NOV 2014
FEB 2015
MAY 2015
AUG 2015
NOV 2015
FEB 2016
MAY 2016
AUG 2016
NOV 2016
FEB 2017
MAY 2017
AUG 2017
NOV 2017
FEB 2018
MAY 2018
AUG 2018
NOV 2018
FEB 2019
MAY 2019
AUG 2019
NOV 2019
FEB 2020
MAY 2020
AUG 2020
NOV 2020
FEB 2021
MAY 2021
AUG 2021
NOV 2021
FEB 2022
MAY 2022
AUG 2022
NOV 2022
FEB 2023
MAY 2023
AUG 2023
NOV 2023
FEB 2024
MAY 2024
AUG 2024
NOV 2024
FEB 2025
MAY 2025
AUG 2025
NOV 2025
FEB 2026
MAY 2026
AUG 2026
NOV 2026
FEB 2027
MAY 2027
AUG 2027
NOV 2027
FEB 2028
MAY 2028
AUG 2028
NOV 2028
FEB 2029
MAY 2029
AUG 2029
NOV 2029
FEB 2030
MAY 2030
AUG 2030
NOV 2030
FEB 2031
MAY 2031
AUG 2031
NOV 2031
FEB 2032
MAY 2032
AUG 2032
NOV 2032
FEB 2033
MAY 2033
AUG 2033
NOV 2033
FEB 2034
MAY 2034
AUG 2034
NOV 2034
FEB 2035
MAY 2035
AUG 2035
NOV 2035
FEB 2036
MAY 2036
AUG 2036
NOV 2036
FEB 2037
MAY 2037
AUG 2037
NOV 2037
FEB 2038
MAY 2038
AUG 2038
NOV 2038
FEB 2039
MAY 2039
AUG 2039
NOV 2039
FEB 2040
MAY 2040
AUG 2040
NOV 2040
FEB 2041
MAY 2041
AUG 2041
NOV 2041
FEB 2042
MAY 2042
AUG 2042
NOV 2042
FEB 2043
MAY 2043
AUG 2043
NOV 2043
FEB 2044
MAY 2044
AUG 2044
NOV 2044
FEB 2045
MAY 2045
AUG 2045
NOV 2045
FEB 2046
MAY 2046
AUG 2046
NOV 2046
FEB 2047
MAY 2047
AUG 2047
NOV 2047
FEB 2048
MAY 2048
AUG 2048
NOV 2048
FEB 2049
MAY 2049
AUG 2049
NOV 2049
FEB 2050
MAY 2050
AUG 2050
NOV 2050
FEB 2051
MAY 2051
AUG 2051
NOV 2051
FEB 2052
MAY 2052
AUG 2052
NOV 2052
FEB 2053
MAY 2053
AUG 2053
NOV 2053
FEB 2054
MAY 2054
AUG 2054
NOV 2054
FEB 2055
MAY 2055
AUG 2055
NOV 2055
FEB 2056
MAY 2056
AUG 2056
NOV 2056
FEB 2057
MAY 2057
AUG 2057
NOV 2057
FEB 2058
MAY 2058
AUG 2058
NOV 2058
FEB 2059
MAY 2059
AUG 2059
NOV 2059
FEB 2060
MAY 2060
AUG 2060
NOV 2060
FEB 2061
MAY 2061
AUG 2061
NOV 2061
FEB 2062
MAY 2062
AUG 2062
NOV 2062
FEB 2063
MAY 2063
AUG 2063
NOV 2063
FEB 2064
MAY 2064
AUG 2064
NOV 2064
FEB 2065
MAY 2065
AUG 2065
NOV 2065
FEB 2066
MAY 2066
AUG 2066
NOV 2066
FEB 2067
MAY 2067
AUG 2067
NOV 2067
FEB 2068
MAY 2068
AUG 2068
NOV 2068
FEB 2069
MAY 2069
AUG 2069
NOV 2069
FEB 2070
MAY 2070
AUG 2070
NOV 2070
FEB 2071
MAY 2071
AUG 2071
NOV 2071
FEB 2072
MAY 2072
AUG 2072
NOV 2072
FEB 2073
MAY 2073
AUG 2073
NOV 2073
FEB 2074
MAY 2074
AUG 2074
NOV 2074
FEB 2075
MAY 2075
AUG 2075
NOV 2075
FEB 2076
MAY 2076
AUG 2076
NOV 2076
FEB 2077
MAY 2077
AUG 2077
NOV 2077
FEB 2078
MAY 2078
AUG 2078
NOV 2078
FEB 2079
MAY 2079
AUG 2079
NOV 2079
FEB 2080
MAY 2080
AUG 2080
NOV 2080
FEB 2081
MAY 2081
AUG 2081
NOV 2081
FEB 2082
MAY 2082
AUG 2082
NOV 2082
FEB 2083
MAY 2083
AUG 2083
NOV 2083
FEB 2084
MAY 2084
AUG 2084
NOV 2084
FEB 2085
MAY 2085
AUG 2085
NOV 2085
FEB 2086
MAY 2086
AUG 2086
NOV 2086
FEB 2087
MAY 2087
AUG 2087
NOV 2087
FEB 2088
MAY 2088
AUG 2088
NOV 2088
FEB 2089
MAY 2089
AUG 2089
NOV 2089
FEB 2090
MAY 2090
AUG 2090
NOV 2090
FEB 2091
MAY 2091
AUG 2091
NOV 2091
FEB 2092
MAY 2092
AUG 2092
NOV 2092
FEB 2093
MAY 2093
AUG 2093
NOV 2093
FEB 2094
MAY 2094
AUG 2094
NOV 2094
FEB 2095
MAY 2095
AUG 2095
NOV 2095
FEB 2096
MAY 2096
AUG 2096
NOV 2096
FEB 2097
MAY 2097
AUG 2097
NOV 2097
FEB 2098
MAY 2098
AUG 2098
NOV 2098
FEB 2099
MAY 2099
AUG 2099
NOV 2099
FEB 2100
MAY 2100
AUG 2100
NOV 2100
FEB 2101
MAY 2101
AUG 2101
NOV 2101
FEB 2102
MAY 2102
AUG 2102
NOV 2102
FEB 2103
MAY 2103
AUG 2103
NOV 2103
FEB 2104
MAY 2104
AUG 2104
NOV 2104
FEB 2105
MAY 2105
AUG 2105
NOV 2105
FEB 2106
MAY 2106
AUG 2106
NOV 2106
FEB 2107
MAY 2107
AUG 2107
NOV 2107
FEB 2108
MAY 2108
AUG 2108
NOV 2108
FEB 2109
MAY 2109
AUG 2109
NOV 2109
FEB 2110
MAY 2110
AUG 2110
NOV 2110
FEB 2111
MAY 2111
AUG 2111
NOV 2111
FEB 2112
MAY 2112
AUG 2112
NOV 2112
FEB 2113
MAY 2113
AUG 2113
NOV 2113
FEB 2114
MAY 2114
AUG 2114
NOV 2114
FEB 2115
MAY 2115
AUG 2115
NOV 2115
FEB 2116
MAY 2116
AUG 2116
NOV 2116
FEB 2117
MAY 2117
AUG 2117
NOV 2117
FEB 2118
MAY 2118
AUG 2118
NOV 2118
FEB 2119
MAY 2119
AUG 2119
NOV 2119
FEB 2120
MAY 2120
AUG 2120
NOV 2120
FEB 2121
MAY 2121
AUG 2121
NOV 2121
FEB 2122
MAY 2122
AUG 2122
NOV 2122
FEB 2123
MAY 2123
AUG 2123
NOV 2123
FEB 2124
MAY 2124
AUG 2124
NOV 2124
FEB 2125
MAY 2125
AUG 2125
NOV 2125
FEB 2126
MAY 2126
AUG 2126
NOV 2126
FEB 2127
MAY 2127
AUG 2127
NOV 2127
FEB 2128
MAY 2128
AUG 2128
NOV 2128
FEB 2129
MAY 2129
AUG 2129
NOV 2129
FEB 2130
MAY 2130
AUG 2130
NOV 2130
FEB 2131
MAY 2131
AUG 2131
NOV 2131
FEB 2132
MAY 2132
AUG 2132
NOV 2132
FEB 2133
MAY 2133
AUG 2133
NOV 2133
FEB 2134
MAY 2134
AUG 2134
NOV 2134
FEB 2135
MAY 2135
AUG 2135
NOV 2135
FEB 2136
MAY 2136
AUG 2136
NOV 2136
FEB 2137
MAY 2137
AUG 2137
NOV 2137
FEB 2138
MAY 2138
AUG 2138
NOV 2138
FEB 2139
MAY 2139
AUG 2139
NOV 2139
FEB 2140
MAY 2140
AUG 2140
NOV 2140
FEB 2141
MAY 2141
AUG 2141
NOV 2141
FEB 2142
MAY 2142
AUG 2142
NOV 2142
FEB 2143
MAY 2143
AUG 2143
NOV 2143
FEB 2144
MAY 2144
AUG 2144
NOV 2144
FEB 2145
MAY 2145
AUG 2145
NOV 2145
FEB 2146
MAY 2146
AUG 2146
NOV 2146
FEB 2147
MAY 2147
AUG 2147
NOV 2147
FEB 2148
MAY 2148
AUG 2148
NOV 2148
FEB 2149
MAY 2149
AUG 2149
NOV 2149
FEB 2150
MAY 2150
AUG 2150
NOV 2150
FEB 2151
MAY 2151
AUG 2151
NOV 2151
FEB 2152
MAY 2152
AUG 2152
NOV 2152
FEB 2153
MAY 2153
AUG 2153
NOV 2153
FEB 2154
MAY 2154
AUG 2154
NOV 2154
FEB 2155
MAY 2155
AUG 2155
NOV 2155
FEB 2156
MAY 2156
AUG 2156
NOV 2156
FEB 2157
MAY 2157
AUG 2157
NOV 2157
FEB 2158
MAY 2158
AUG 2158
NOV 2158
FEB 2159
MAY 2159
AUG 2159
NOV 2159
FEB 2160
MAY 2160
AUG 2160
NOV 2160
FEB 2161
MAY 2161
AUG 2161
NOV 2161
FEB 2162
MAY 2162
AUG 2162
NOV 2162
FEB 2163
MAY 2163
AUG 2163
NOV 2163
FEB 2164
MAY 2164
AUG 2164
NOV 2164
FEB 2165
MAY 2165
AUG 2165
NOV 2165
FEB 2166
MAY 2166
AUG 2166
NOV 2166
FEB 2167
MAY 2167
AUG 2167
NOV 2167
FEB 2168
MAY 2168
AUG 2168
NOV 2168
FEB 2169
MAY 2169
AUG 2169
NOV 2169
FEB 2170
MAY 2170
AUG 2170
NOV 2170
FEB 2171
MAY 2171
AUG 2171
NOV 2171
FEB 2172
MAY 2172
AUG 2172
NOV 2172
FEB 2173
MAY 2173
AUG 2173
NOV 2173
FEB 2174
MAY 2174
AUG 2174
NOV 2174
FEB 2175
MAY 2175
AUG 2175
NOV 2175
FEB 2176
MAY 2176
AUG 2176
NOV 2176
FEB 2177
MAY 2177
AUG 2177
NOV 2177
FEB 2178
MAY 2178
AUG 2178
NOV 2178
FEB 2179
MAY 2179
AUG 2179
NOV 2179
FEB 2180
MAY 2180
AUG 2180
NOV 2180
FEB 2181
MAY 2181
AUG 2181
NOV 2181
FEB 2182
MAY 2182
AUG 2182
NOV 2182
FEB 2183
MAY 2183
AUG 2183
NOV 2183
FEB 2184
MAY 2184
AUG 2184
NOV 2184
FEB 2185
MAY 2185
AUG 2185
NOV 2185
FEB 2186
MAY 2186
AUG 2186
NOV 2186
FEB 2187
MAY 2187
AUG 2187
NOV 2187
FEB 2188
MAY 2188
AUG 2188
NOV 2188
FEB 2189
MAY 2189
AUG 2189
NOV 2189
FEB 2190
MAY 2190
AUG 2190
NOV 2190
FEB 2191
MAY 2191
AUG 2191
NOV 2191
FEB 2192
MAY 2192
AUG 2192
NOV 2192
FEB 2193
MAY 2193
AUG 2193
NOV 2193
FEB 2194
MAY 2194
AUG 2194
NOV 2194
FEB 2195
MAY 2195
AUG 2195
NOV 2195
FEB 2196
MAY 2196
AUG 2196
NOV 2196
FEB 2197
MAY 2197
AUG 2197
NOV 2197
FEB 2198
MAY 2198
AUG 2198
NOV 2198
FEB 2199
MAY 2199
AUG 2199
NOV 2199
FEB 2200
MAY 2200
AUG 2200
NOV 2200
FEB 2201
MAY 2201
AUG 2201
NOV 2201
FEB 2202
MAY 2202
AUG 2202
NOV 2202
FEB 2203
MAY 2203
AUG 2203
NOV 2203
FEB 2204
MAY 2204
AUG 2204
NOV 2204
FEB 2205
MAY 2205
AUG 2205
NOV 2205
FEB 2206
MAY 2206
AUG 2206
NOV 2206
FEB 2207
MAY 2207
AUG 2207
NOV 2207
FEB 2208
MAY 2208
AUG 2208
NOV 2208
FEB 2209
MAY 2209
AUG 2209
NOV 2209
FEB 2210
MAY 2210
AUG 2210
NOV 2210
FEB 2211
MAY 2211
AUG 2211
NOV 2211
FEB 2212
MAY 2212
AUG 2212
NOV 2212
FEB 2213
MAY 2213
AUG 2213
NOV 2213
FEB 2214
MAY 2214
AUG 2214
NOV 2214
FEB 2215
MAY 2215
AUG 2215
NOV 2215
FEB 2216
MAY 2216
AUG 2216
NOV 2216
FEB 2217
MAY 2217
AUG 2217
NOV 2217
FEB 2218
MAY 2218
AUG 2218
NOV 2218
FEB 2219
MAY 2219
AUG 2219
NOV 2219
FEB 2220
MAY 2220
AUG 2220
NOV 2220
FEB 2221
MAY 2221
AUG 2221
NOV 2221
FEB 2222
MAY 2222
AUG 2222
NOV 2222
FEB 2223
MAY 2223
AUG 2223
NOV 2223
FEB 2224
MAY 2224
AUG 2224
NOV 2224
FEB 2225
MAY 2225
AUG 2225
NOV 2225
FEB 2226
MAY 2226
AUG 2226
NOV 2226
FEB 2227
MAY 2227
AUG 2227
NOV 2227
FEB 2228
MAY 2228
AUG 2228
NOV 2228
FEB 2229
MAY 2229
AUG 2229
NOV 2229
FEB 2230
MAY 2230
AUG 2230
NOV 2230
FEB 2231
MAY 2231
AUG 2231
NOV 2231
FEB 2232
MAY 2232
AUG 2232
NOV 2232
FEB 2233
MAY 2233
AUG 2233
NOV 2233
FEB 2234
MAY 2234
AUG 2234
NOV 2234
FEB 22

P. D.



PROJECT ANDERSON MINE

HOLE SIZE

☐ AIR ☐ WATER

HOLE NO. AM 619

ELEVATION

NORTH

EAST

LOGGED BY K. TAYLOR

DATE 2/27/78

SECTION

TOWNSHIP

RANGE

T.D.

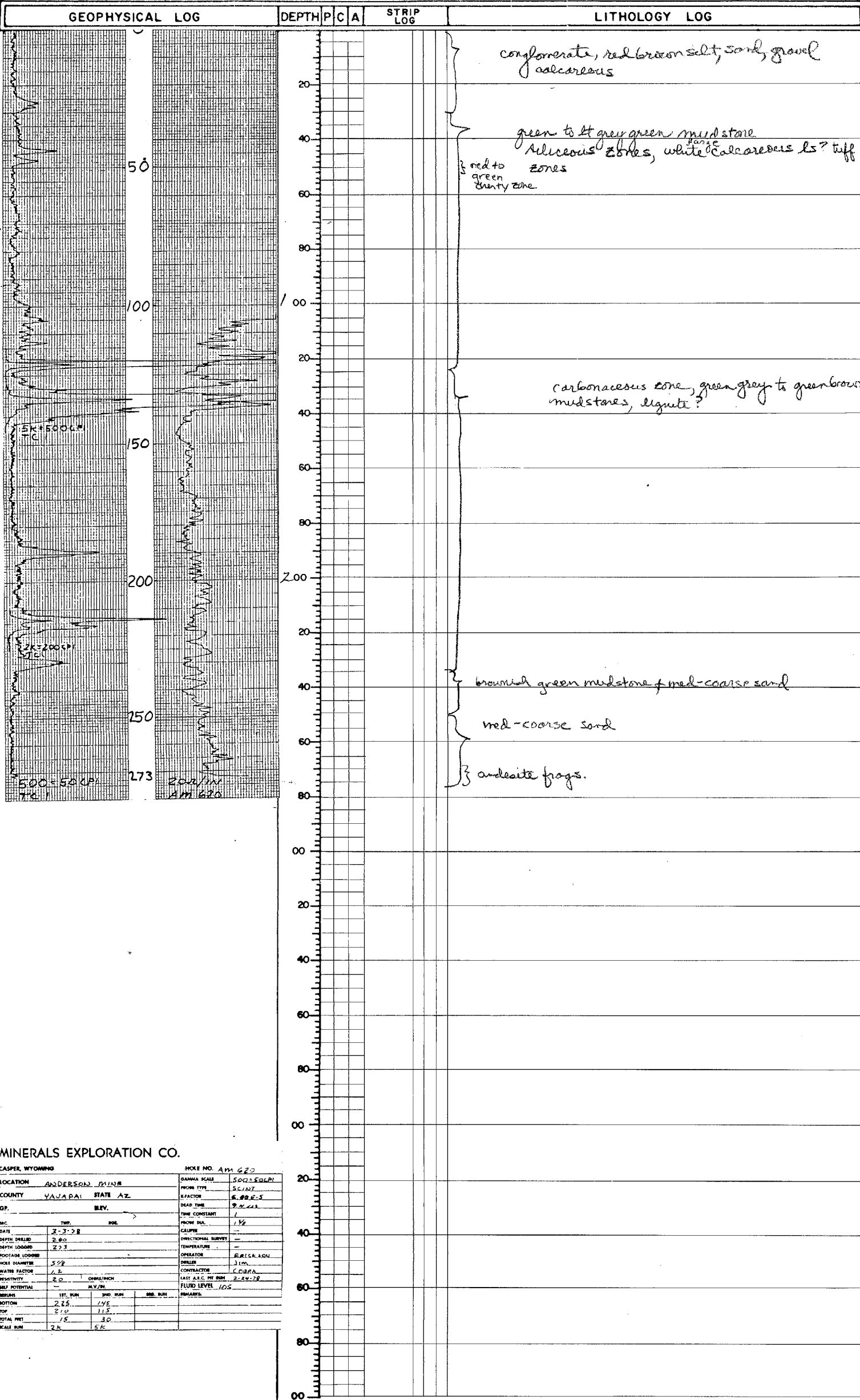
P. D.

| GEOPHYSICAL LOG | | DEPTH | P | C | A | STRIP LOG | LITHOLOGY LOG |
|-----------------|--|-------|---|---|---|--------------|---|
| | | 0 | | | | | conglomerate; red brown silt, sand, gravel qtz, seidelogen volcanics |
| | | 20 | | | | | mudstone, green, siliceous zones, (white hard + red brn) white or fusaceous? |
| | | 40 | | | | | |
| | | 60 | | | | | |
| | | 80 | | | | | |
| | | 100 | | | | | olive green mudstone |
| | | 120 | | | | | |
| | | 140 | | | | | bluegreen mudstone |
| | | 160 | | | | | |
| | | 180 | | | | | lignitic zone |
| | | 200 | | | | | red mudstone, green mudstone, some andesitic pebbles |
| | | 220 | | | | | yellow ^{green} to blue green mudstone |
| | | 240 | | | | | yellow green, blue green, red mudstone siliceous zones |
| | | 260 | | | | | |
| | | 280 | | | | | mudstones w/ andesitic frags |
| | | 300 | | | | | |
| | | 320 | | | | | |
| | | 340 | | | | | |
| | | 360 | | | | | |
| | | 380 | | | | | |
| | | 400 | | | | | |
| | | 420 | | | | | |
| | | 440 | | | | | |
| | | 460 | | | | | |
| | | 480 | | | | | |
| | | 500 | | | | | |

Century Geophysical Corporation
Denver, Colo.

AM 619
Z-27-78
ANDERSON MINE
YAVAPAI
ARIZONA
MINERALS Exp.
M. DOOGUE
WICKENBACH, ARIZONA
260'

Track used = 2



MINERALS EXPLORATION CO.

CASPER, WYOMING

HOLE NO. AM 620

LOCATION ANDERSON MINE

COUNTY YAVAPAI STATE AZ

OP. REV.

DATE 3-3-78

DEPTH (FEET) 273

HOIST (FOOTING) 528

WATER FACTOR 1.2

RESISTIVITY 20

SELF POTENTIAL -

REMARKS

DIAMETER SCALE 500-500P

PROBE TYPE SCINT

SPACER 6.00E-3

DEAD TIME 9.24E-3

TIME CONSTANT 1

PROBE DIA. 1.56

CLIPPER -

DIRECTIONAL SURVEY -

TEMPERATURE -

OPERATOR ERIKS. AGN

DRILLER 30M

CONTRACTOR COBPA

LAST A.C. PT. RUN 2-24-78

FLUID LEVEL 105

REMARKS

1ST. RUN 275

2ND. RUN 145

3RD. RUN 115

4TH. RUN 30

5TH. RUN 15

6TH. RUN 24

7TH. RUN 56