



CONTACT INFORMATION
Mining Records Curator
Arizona Geological Survey
3550 N. Central Ave, 2nd floor
Phoenix, AZ, 85012
602-771-1601
<http://www.azgs.az.gov>
inquiries@azgs.az.gov

The following file is part of the Anderson Mine Collection

ACCESS STATEMENT

These digitized collections are accessible for purposes of education and research. We have indicated what we know about copyright and rights of privacy, publicity, or trademark. Due to the nature of archival collections, we are not always able to identify this information. We are eager to hear from any rights owners, so that we may obtain accurate information. Upon request, we will remove material from public view while we address a rights issue.

CONSTRAINTS STATEMENT

The Arizona Geological Survey does not claim to control all rights for all materials in its collection. These rights include, but are not limited to: copyright, privacy rights, and cultural protection rights. The User hereby assumes all responsibility for obtaining any rights to use the material in excess of "fair use."

The Survey makes no intellectual property claims to the products created by individual authors in the manuscript collections, except when the author deeded those rights to the Survey or when those authors were employed by the State of Arizona and created intellectual products as a function of their official duties. The Survey does maintain property rights to the physical and digital representations of the works.

QUALITY STATEMENT

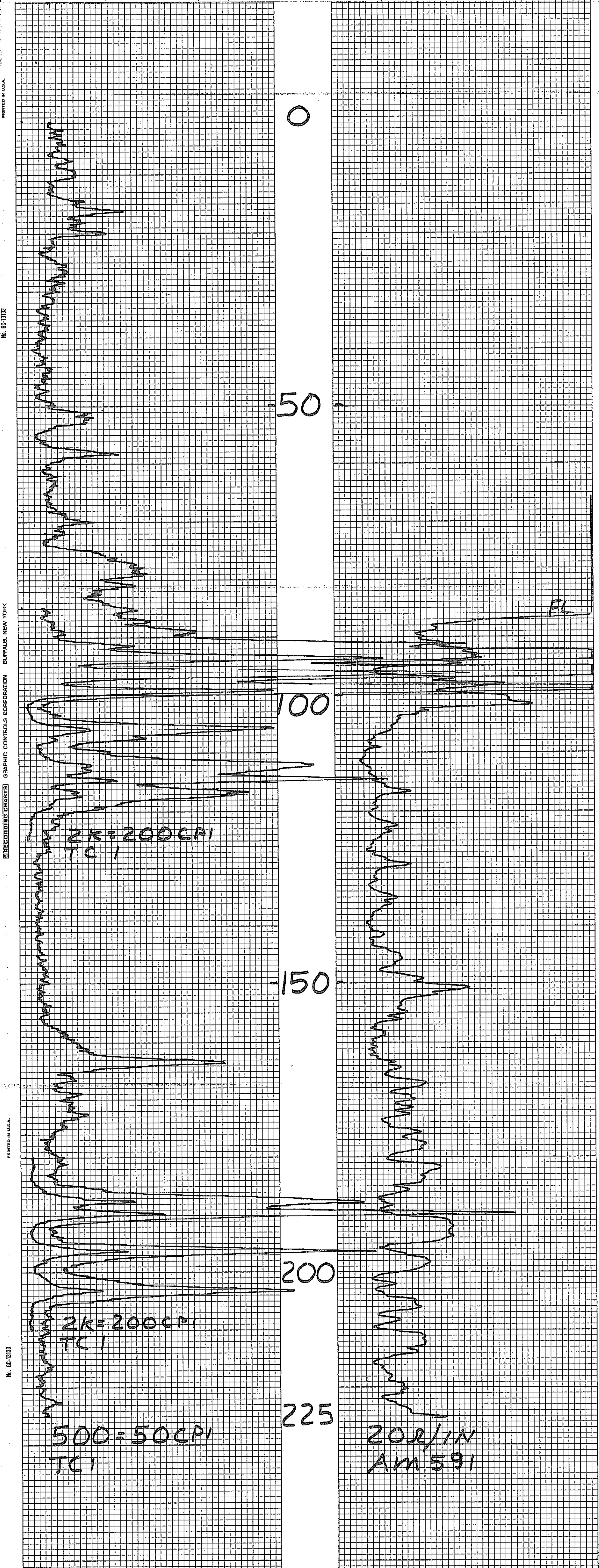
The Arizona Geological Survey is not responsible for the accuracy of the records, information, or opinions that may be contained in the files. The Survey collects, catalogs, and archives data on mineral properties regardless of its views of the veracity or accuracy of those data.

MINERALS EXPLORATION CO.

CASPER, WYOMING

HOLE NO. FM 591

LOCATION ANDERSON MINE				GAMMA SCALE	500=50CPI
COUNTY YAVAPAI STATE AZ				PROBE TYPE	SCINT
GP. ELEV.				K-FACTOR	6.00E-5
				DEAD TIME	9.2us
				TIME CONSTANT	1
SEC. TWP. RGE.				PROBE DIA.	1 5/8
DATE	3-7-78			CALIPER	-
DEPTH DRILLED	225			DIRECTIONAL SURVEY	-
DEPTH LOGGED	225			TEMPERATURE	-
FOOTAGE LOGGED				OPERATOR	ERICKSON
HOLE DIAMETER 5				DRILLER	AL
WATER FACTOR 1.2				CONTRACTOR	UNIVERSAL
RESISTIVITY 20 OHMS/INCH				LAST A.E.C. PIT RUN 2-24-78	
SELF POTENTIAL - M.V./IN.				FLUID LEVEL 85	
RERUNS	1ST. RUN	2ND. RUN	3RD. RUN	REMARKS:	
BOTTOM	210	125			
TOP	180	85			
TOTAL FEET	30	40			
SCALE RUN	2k	2k			

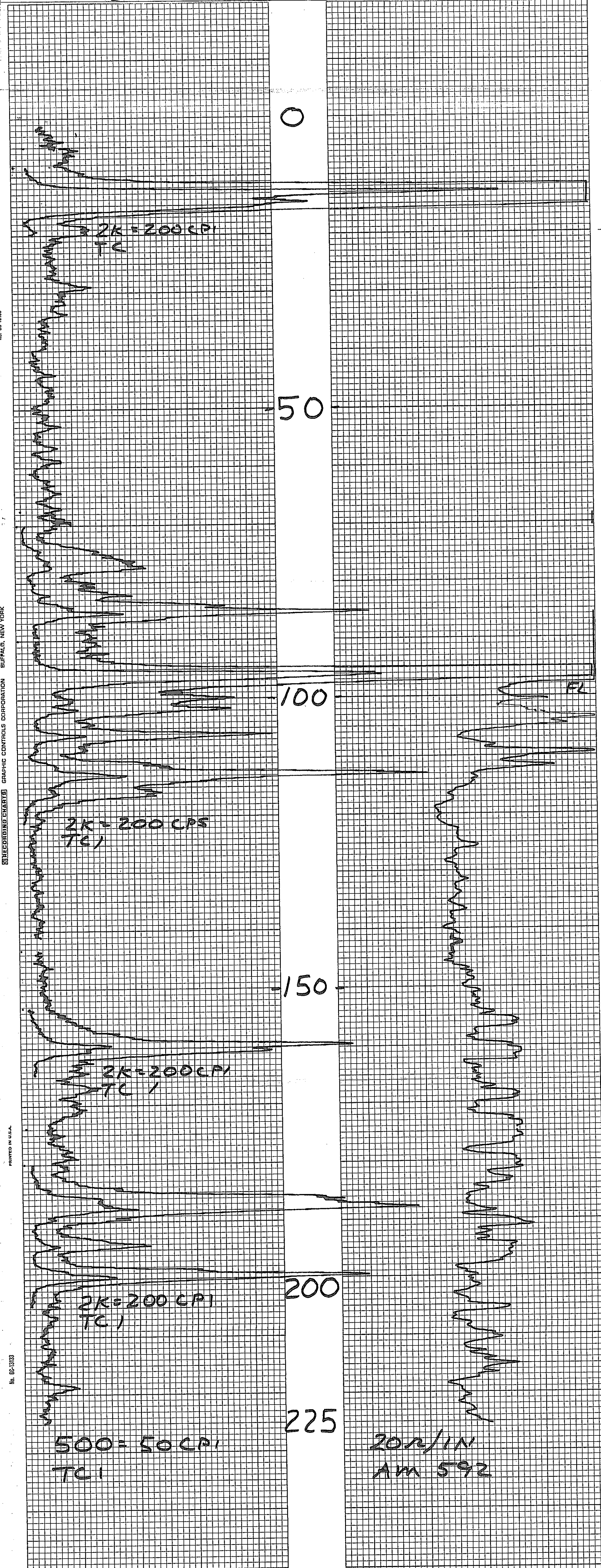


MINERALS EXPLORATION CO.

CASPER, WYOMING

HOLE NO. AM 592

LOCATION ANDERSON MINE				GAMMA SCALE	500=50CPI
COUNTY YAVAPI STATE AZ				PROBE TYPE	SCINT
GP. ELEV.				K-FACTOR	6.00 E-5
SEC. TWP. RGE.				DEAD TIME	9.4 μ S
DATE	3-1-78			TIME CONSTANT	1
DEPTH DRILLED				PROBE DIA.	1 5/8
DEPTH LOGGED	225			CALIPER	-
FOOTAGE LOGGED				DIRECTIONAL SURVEY	-
HOLE DIAMETER	5 1/8			TEMPERATURE	-
WATER FACTOR	1.2			OPERATOR	ERICKSON
RESISTIVITY	20 OHMS/INCH			DRILLER	AL
SELF POTENTIAL	- M.V./IN.			CONTRACTOR	UNIVERSAL
RERUNS	1ST. RUN	2ND. RUN	3RD. RUN	LAST A.E.C. PIT RUN	2-24-78
BOTTOM	205	165	120	FLUID LEVEL	98
TOP	180	155	70	REMARKS: 4th RUN	
TOTAL FEET	25	10	50		
SCALE RUN	2K	2K	2K		

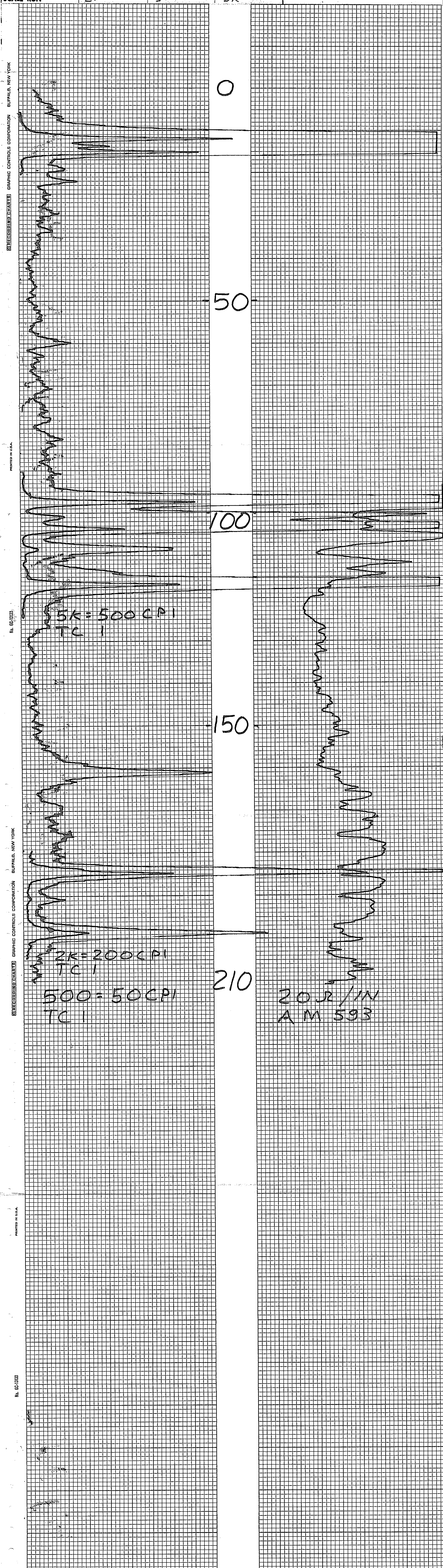


MINERALS EXPLORATION CO.

CASPER, WYOMING

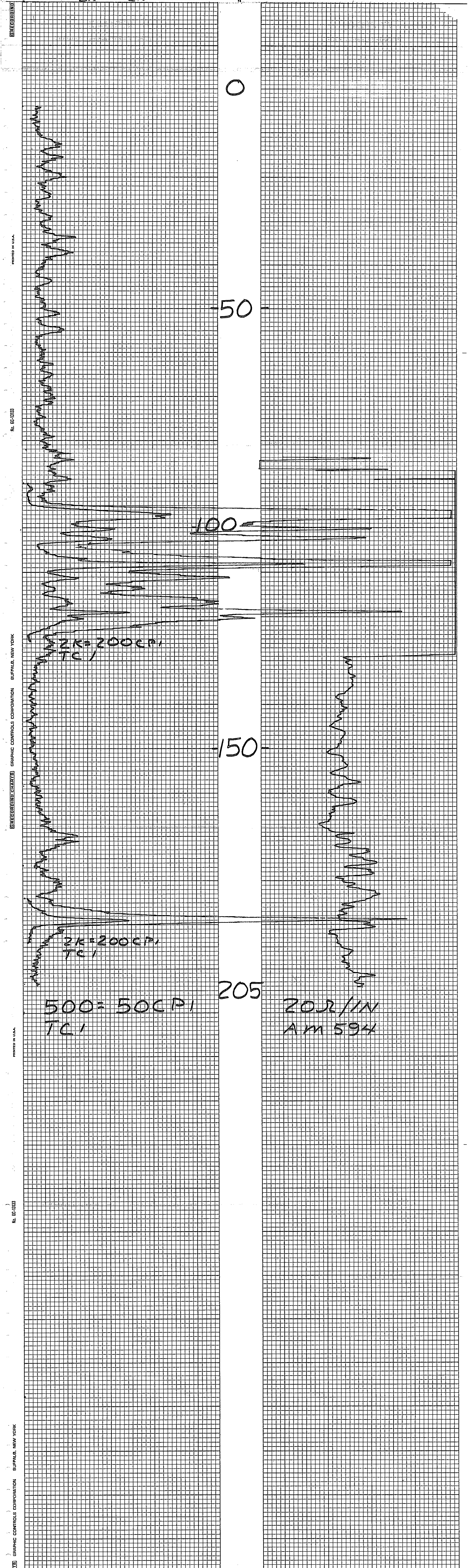
HOLE NO. AM593

LOCATION ANDERSON MINE				GAMMA SCALE	500=50 CPI
COUNTY YAVAPAI STATE AZ				PROBE TYPE	SCINT
GP.				K-FACTOR	6.00E-5
ELEV.				DEAD TIME	9.2ms
SEC.				TIME CONSTANT	1
TWP.				PROBE DIA.	1 5/8
RGE.				CALIPER	-
DATE	3-31-78			DIRECTIONAL SURVEY	-
DEPTH DRILLED	210			TEMPERATURE	-
DEPTH LOGGED	210			OPERATOR	ERICKSON
FOOTAGE LOGGED				DRILLER	CLYDE
HOLE DIAMETER	5 1/8			CONTRACTOR	HARRIS
WATER FACTOR	1.2			LAST A.E.C. PIT RUN	2-24-78
RESISTIVITY	20 OHMS/INCH			FLUID LEVEL	
SELF POTENTIAL	- M.V./IN.			REMARKS:	
RERUNS	1ST. RUN	2ND. RUN	3RD. RUN		
BOTTOM	205	125	20		
TOP	180	90	5		
TOTAL FEET	26	35	15		
SCALE RUN	2K	5K	5K		



AREA ANDERSON MINE			
GRID POINT	ELEVATION	HOLE NO. Am 594	
COUNTY YAVAPAI	STATE AZ	GAMMA GAMMA DENSITY	
SEC.	TWP.	RGE.	

BOREHOLE DATA		LOG DATA	
DATE	3-18-78	TOTAL DEPTH LOGGED	205 FT.
DRILLER	AL/UNIVERSAL	TOTAL FOOTAGE LOGGED	250 FT.
DRILLER DEPTH	205 FT.	LOG SPEED	15 FT./MIN.
BIT SIZE	5/8 IN.	LOG SCALE	500:50 CPS/IN. T.C. 1
FLUID LEVEL	FT.	DETECTOR TYPE	SCINT
CSG.	K=6.00E-5, Dt=9.2115	DETECTOR SIZE	
REMARKS	PERUN	DECENTRALIZED	CENTRALIZED
	BOT 195 125	SOURCE TYPE	SOURCE SIZE
	TOP 185 90	TRK. NO.	61
	TOT 10 35	OPERATOR	ERICKSON
	8 2K 2K		

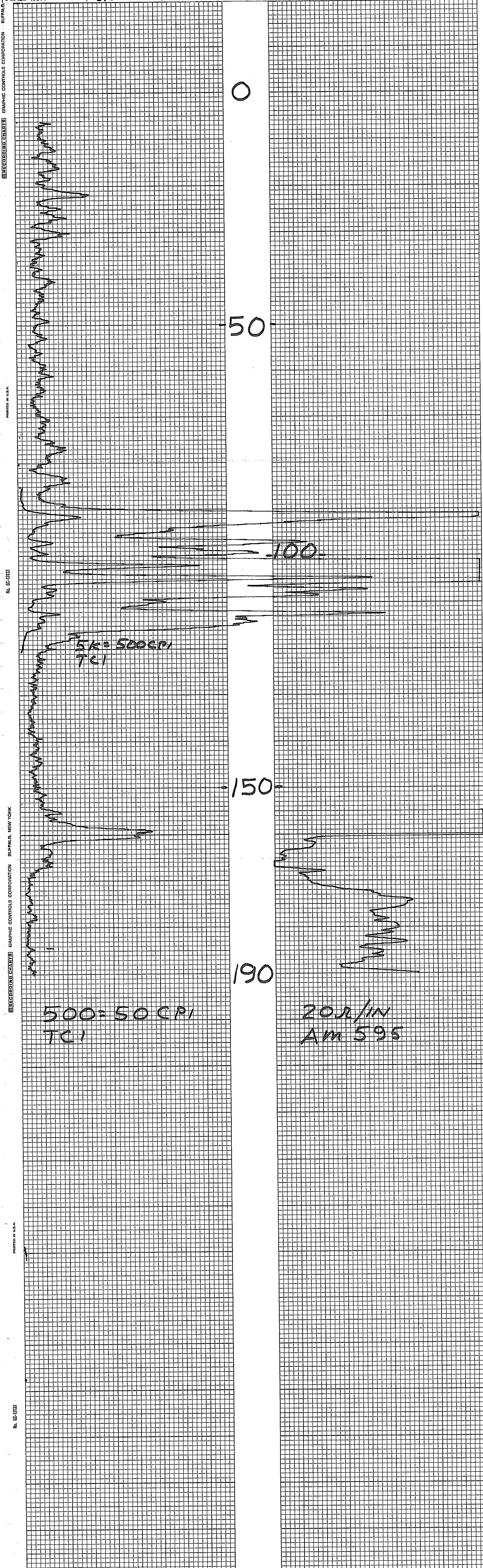


MINERALS EXPLORATION CO.

CASPER, WYOMING

HOLE NO. AM 595

LOCATION ANDERSON MINE				GAMMA SCALE	500 = 50 C/P
COUNTY YAVAPAI STATE AZ				PROBE TYPE	SCINT
GP.				K-FACTOR	6.00 E-5
ELEV.				DEAD TIME	9.2 μs
SEC.				TIME CONSTANT	1
TWP.				PROBE DIA.	1 5/8
RGE.				CALIPER	
DATE	3-12-78			DIRECTIONAL SURVEY	
DEPTH DRILLED	195			TEMPERATURE	
DEPTH LOGGED	190			OPERATOR	
FOOTAGE LOGGED				DRILLER	AL
HOLE DIAMETER	5 1/8			CONTRACTOR	UNIVERSAL
WATER FACTOR	1.2			LAST A.E.C. PIT RUN	2-24-78
RESISTIVITY	20 OHMS/INCH			FLUID LEVEL	160
SELF POTENTIAL	- M.V./IN.			REMARKS:	
RERUNS	1ST. RUN	2ND. RUN	3RD. RUN		
BOTTOM	120				
TOP	85				
TOTAL FEET	35				
SCALE RUN	5K				



MINERALS EXPLORATION CO.

CASPER, WYOMING

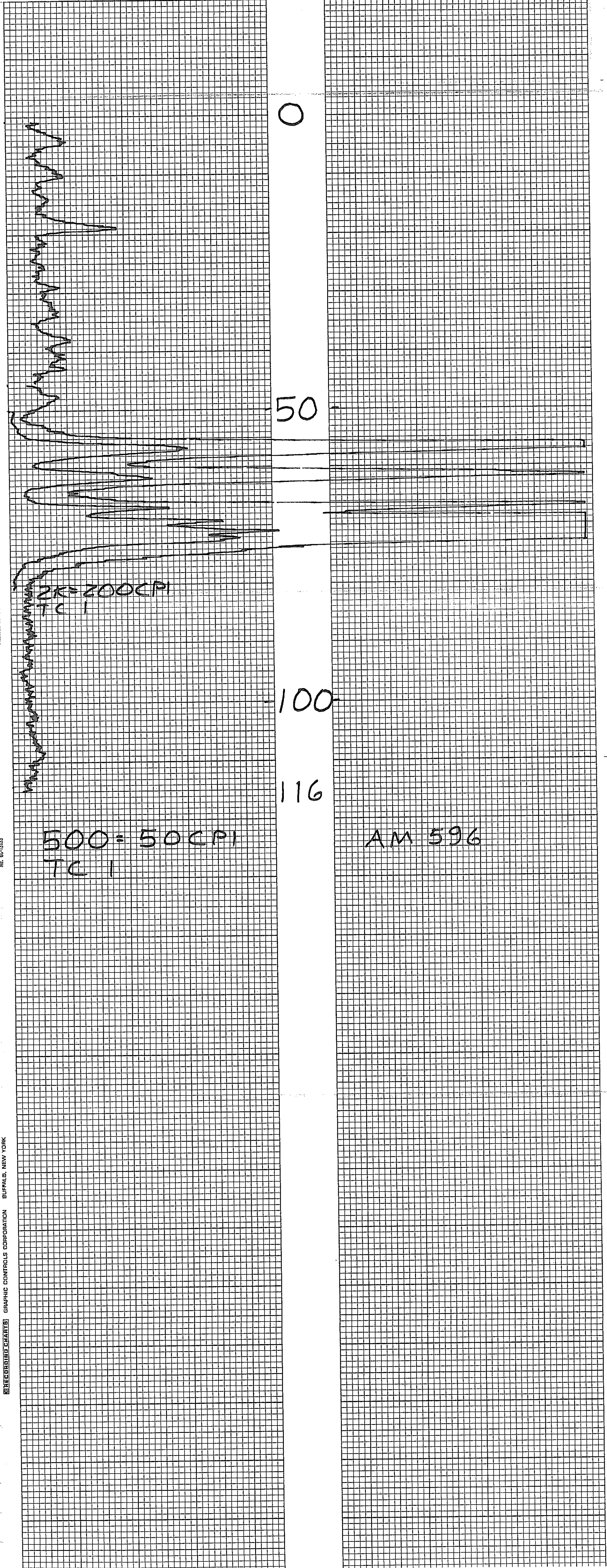
HOLE NO. Am 596

LOCATION ANDERSON MINE				GAMMA SCALE	500=50CPI
COUNTY YAVAPAI STATE AZ				PROBE TYPE	SCINT
GP. ELEV.				K-FACTOR	6.00 F-5
SEC. TWP. RGE.				DEAD TIME	9.2 us
DATE	3-31-78			TIME CONSTANT	1
DEPTH DRILLED	125			PROBE DIA.	1 5/8
DEPTH LOGGED	116			CALIPER	-
FOOTAGE LOGGED				DIRECTIONAL SURVEY	-
HOLE DIAMETER	6			TEMPERATURE	-
WATER FACTOR	-			OPERATOR	ERICKSON
RESISTIVITY	-			DRILLER	DENNIS
SELF POTENTIAL	-			CONTRACTOR	VENTURE
	OHMS/INCH			LAST A.E.C. PIT RUN	2-24-78
	M.V./IN.			FLUID LEVEL	
RERUNS	1ST. RUN	2ND. RUN	3RD. RUN	REMARKS:	
BOTTOM	80				
TOP	50				
TOTAL FEET	30				
SCALE RUN	2K				

RECORDING CHARTS GRAPHIC CONTROLS CORPORATION BUFFALO, NEW YORK

PRINTED IN U.S.A.

10-60-3133



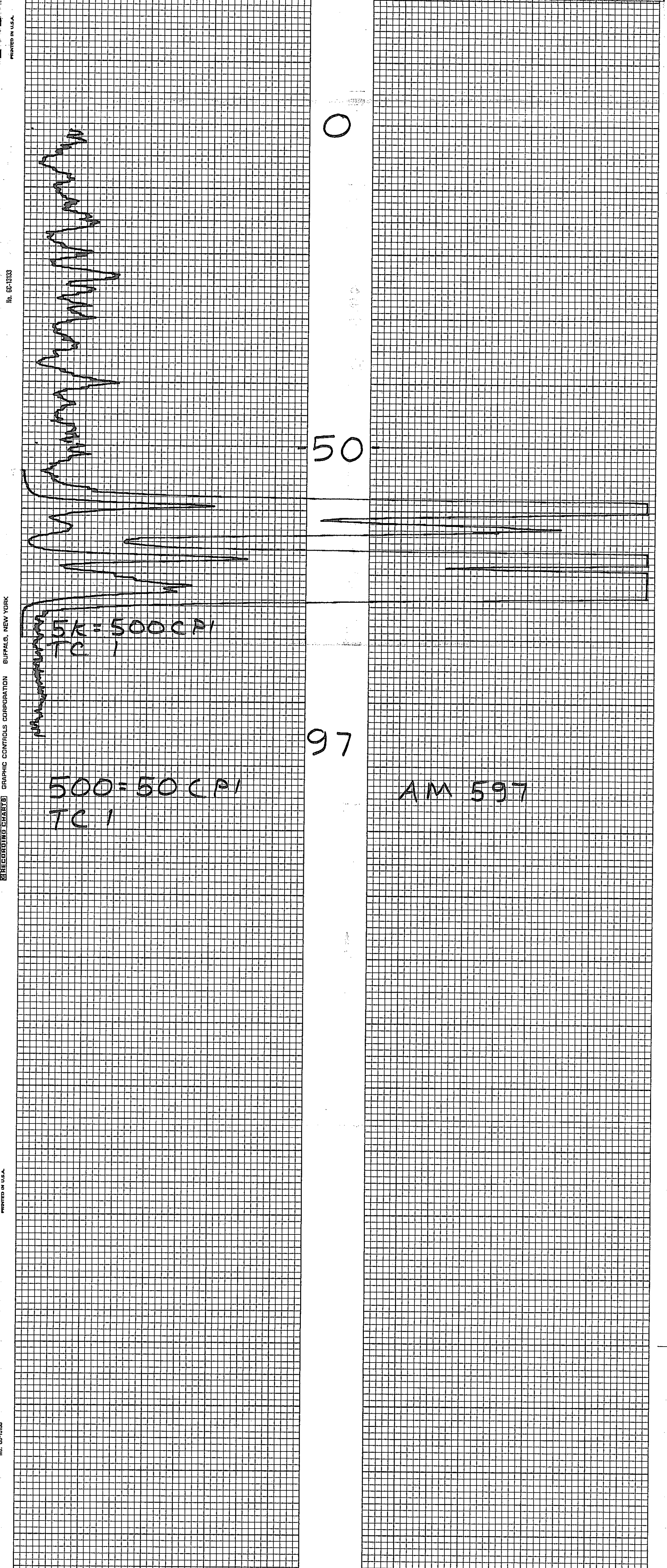
RECORDING CHARTS GRAPHIC CONTROLS CORPORATION BUFFALO, NEW YORK

MINERALS EXPLORATION CO.

CASPER, WYOMING

HOLE NO. Am 597

LOCATION ANDERSON MINE				GAMMA SCALE	500=50CPI
COUNTY YAVAPAI STATE AZ				PROBE TYPE	SCINT
GP.				K-FACTOR	6.00 E-5
ELEV.				DEAD TIME	9.2 us
SEC.				TIME CONSTANT	1
TWP.				PROBE DIA.	1 5/8
RGE.				CALIPER	-
DATE	3-30-78			DIRECTIONAL SURVEY	-
DEPTH DRILLED	100			TEMPERATURE	-
DEPTH LOGGED	97			OPERATOR	ERICKSON
FOOTAGE LOGGED				DRILLER	DENNIS
HOLE DIAMETER	6			CONTRACTOR	VENTURE
WATER FACTOR	-			LAST A.E.C. PIT RUN	2-24-78
RESISTIVITY	-			FLUID LEVEL	
SELF POTENTIAL	-			REMARKS:	
OHMS/INCH					
M.V./IN.					
RERUNS	1ST. RUN	2ND. RUN	3RD. RUN		
BOTTOM	80				
TOP	55				
TOTAL FEET	25				
SCALE RUN	5K				



PRINTED IN U.S.A.

No. GC-13133

RECORDING CHARTS GRAPHIC CONTROLS CORPORATION BUFFALO, NEW YORK

PRINTED IN U.S.A.

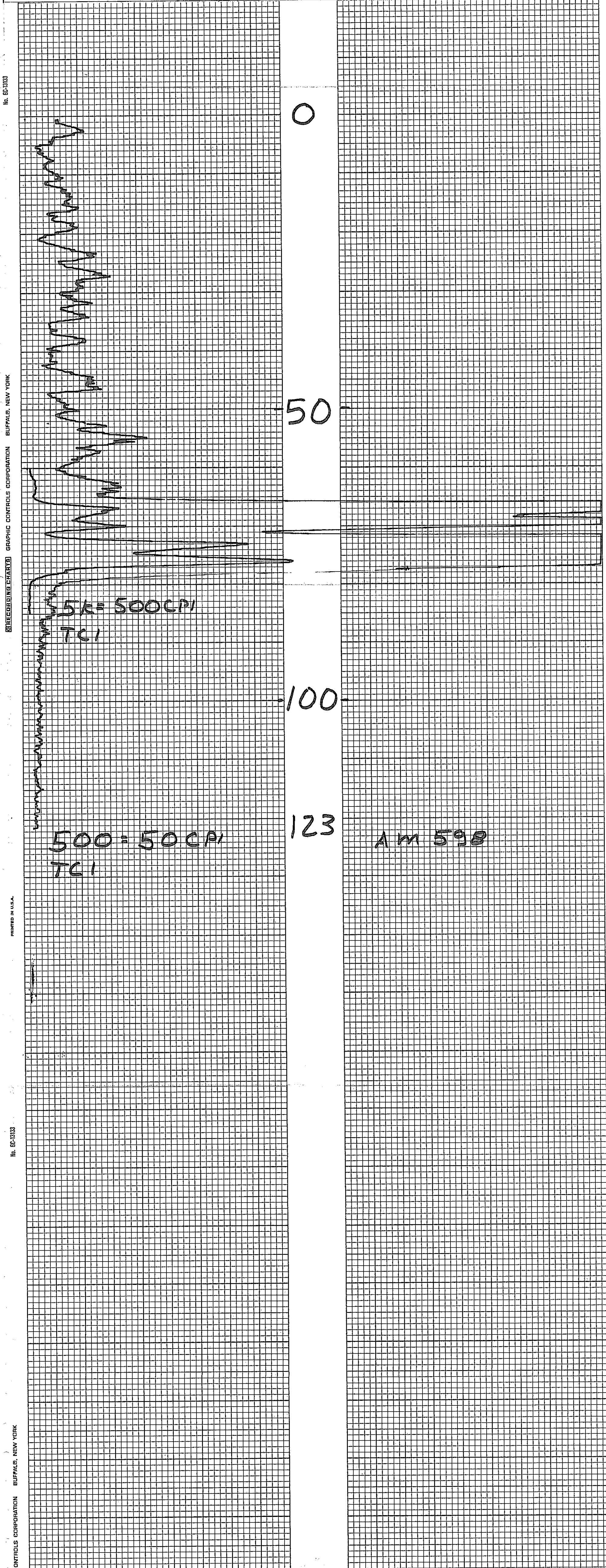
No. GC-13133

MINERALS EXPLORATION CO.

CASPER, WYOMING

HOLE NO. 548? Am 598

LOCATION ANDERSON MINE				GAMMA SCALE	500 = 50 CPI
COUNTY YAVAPAI STATE AZ				PROBE TYPE	SCINT
GP. ELEV.				K-FACTOR	6.00 E-5
SEC. TWP. RGE.				DEAD TIME	92 us
DATE	3-7-78			TIME CONSTANT	1
DEPTH DRILLED	125			PROBE DIA.	1 5/8
DEPTH LOGGED	123			CALIPER	-
FOOTAGE LOGGED				DIRECTIONAL SURVEY	-
HOLE DIAMETER	5 1/8			TEMPERATURE	-
WATER FACTOR	-			OPERATOR	ERICKSON
RESISTIVITY	- OHMS/INCH			DRILLER	AL
SELF POTENTIAL	- M.V./IN.			CONTRACTOR	UNIVERSAL
RERUNS	1ST. RUN	2ND. RUN	3RD. RUN	LAST A.E.C. PIT RUN	2-24-78
BOTTOM	85			FLUID LEVEL	
TOP	60			REMARKS:	
TOTAL FEET	15				
SCALE RUN	5K				



No. 6C-13133

RECORDING CHARTS GRAPHIC CONTROLS CORPORATION BUFFALO, NEW YORK

PRINTED IN U.S.A.

No. 6C-13133

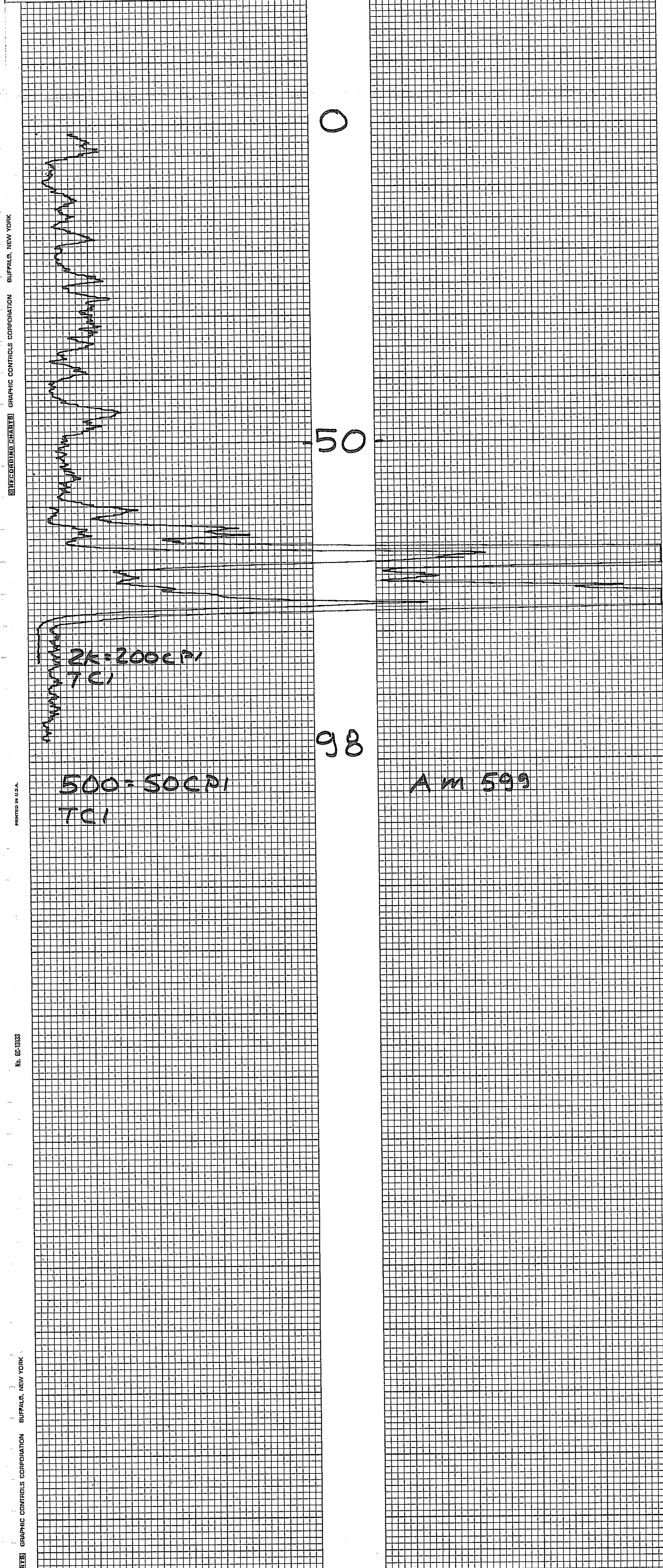
GRAPHIC CONTROLS CORPORATION BUFFALO, NEW YORK

MINERALS EXPLORATION CO.

CASPER, WYOMING

HOLE NO. Am 599

LOCATION ANDERSON MINE				GAMMA SCALE	500=50CPI
COUNTY YAVAPAI STATE AZ				PROBE TYPE	SCINT
GP. ELEV.				K-FACTOR	6.00E-5
SEC. TWP. RGE.				DEAD TIME	9.2ms
DATE	3-15-78			TIME CONSTANT	1
DEPTH DRILLED	100			PROBE DIA.	1 5/8
DEPTH LOGGED	98			CALIPER	-
FOOTAGE LOGGED				DIRECTIONAL SURVEY	-
HOLE DIAMETER	6			TEMPERATURE	-
WATER FACTOR	-			OPERATOR	ERICKSON
RESISTIVITY	-			DRILLER	DENNIS
SELF POTENTIAL	-			CONTRACTOR	VENTURE
	OHMS/INCH			LAST A.E.C. PIT RUN	2-24-78
	M.V./IN.			FLUID LEVEL	-
RERUNS	1ST. RUN	2ND. RUN	3RD. RUN	REMARKS:	
BOTTOM	85				
TOP	60				
TOTAL FEET	25				
SCALE RUN	2K				



RECORDING CHARTS GRAPHIC CONTROLS CORPORATION BUFFALO, NEW YORK

PRINTED IN U.S.A.

No. GC-13133

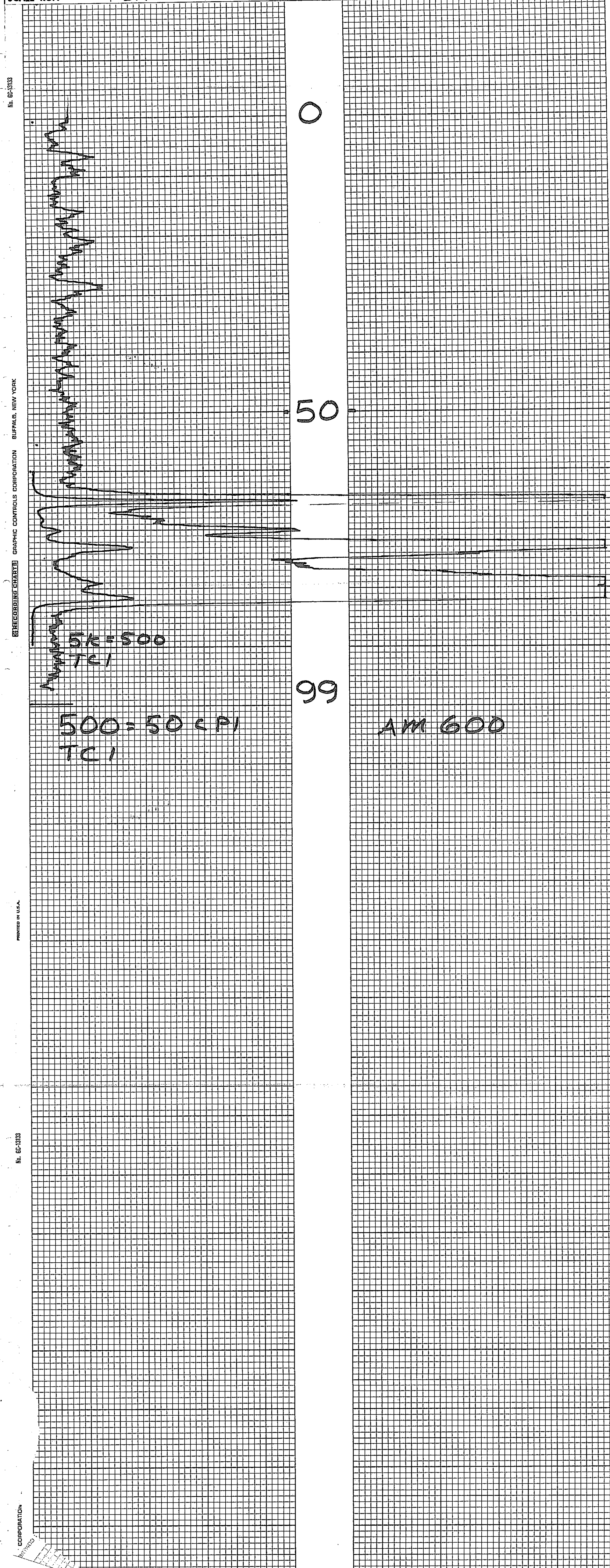
GRAPHIC CONTROLS CORPORATION BUFFALO, NEW YORK

MINERALS EXPLORATION CO.

CASPER, WYOMING

HOLE NO. AM 600

LOCATION ANDERSON MINE				GAMMA SCALE	500=50CPI
COUNTY YAVAPAI STATE AZ				PROBE TYPE	SCINT
GP. ELEV.				K-FACTOR	6.00E-5
SEC. TWP. RGE.				DEAD TIME	9.2US
DATE	3-16-78			TIME CONSTANT	1
DEPTH DRILLED	100			PROBE DIA.	1 5/8
DEPTH LOGGED	99			CALIPER	-
FOOTAGE LOGGED				DIRECTIONAL SURVEY	-
HOLE DIAMETER	6			TEMPERATURE	-
WATER FACTOR	-			OPERATOR	ERICKSON
RESISTIVITY	-			DRILLER	DENNIS
SELF POTENTIAL	-			CONTRACTOR	VENTURE
	OHMS/INCH			LAST A.E.C. PIT RUN	2-24-78
	M.V./IN.			FLUID LEVEL	
RERUNS	1ST. RUN	2ND. RUN	3RD. RUN	REMARKS:	
BOTTOM	80				
TOP	60				
TOTAL FEET	30				
SCALE RUN	5K				



No. 6C-3133

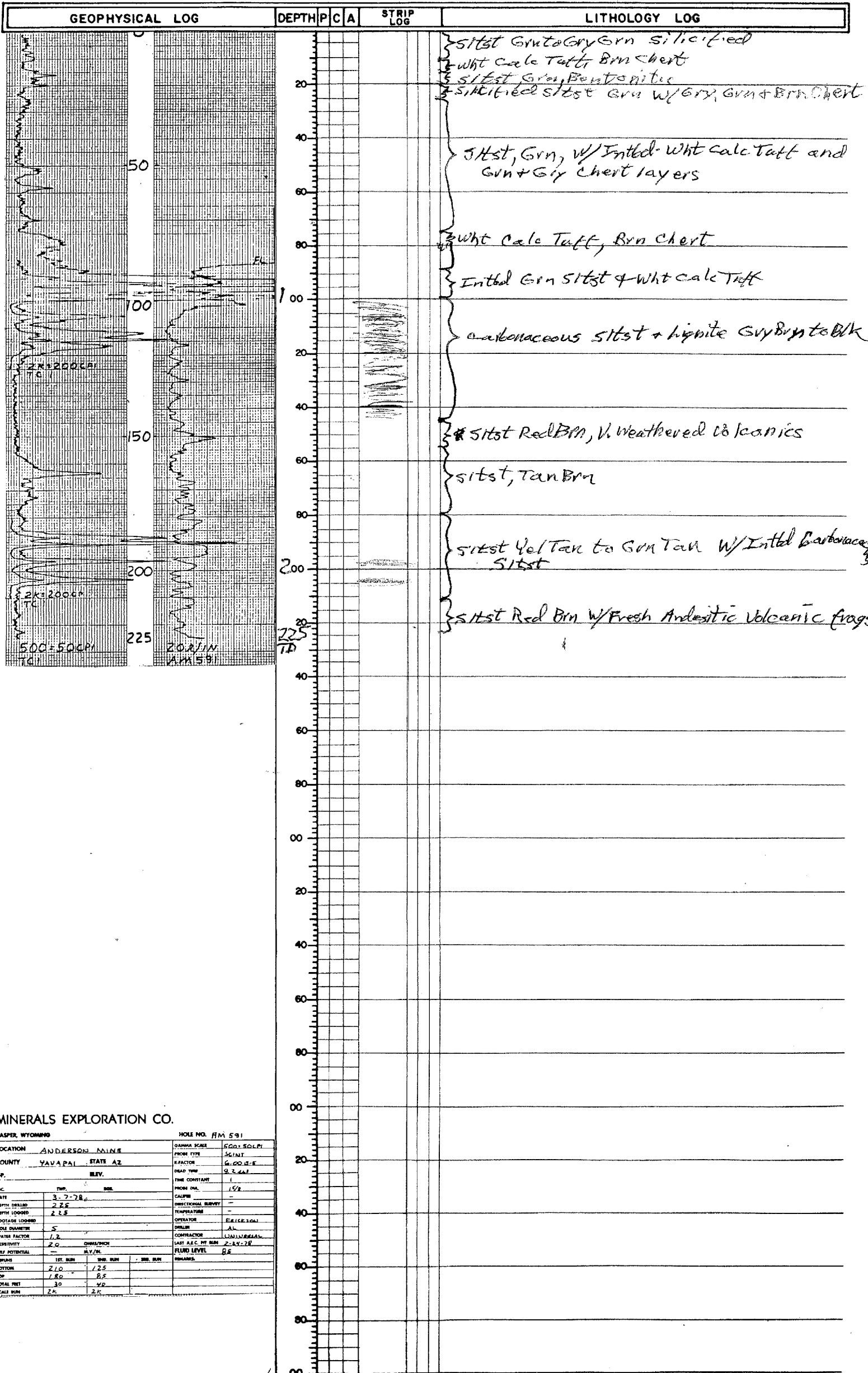
GRAPHIC CONTROLS CORPORATION BUFFALO, NEW YORK

RECORDING CHARTS

PRINTED IN U.S.A.

No. 6C-3133

CORPORATION



MINERALS EXPLORATION CO.

CASPER, WYOMING		HOLE NO. AM 591	
LOCATION	ANDERSON MINE	GAMMA SCALE	500:500 FT
COUNTY	YAVAPAI STATE AZ	PROB TYPE	SKINT
OP.	BLV.	EXFACOR	6.00:5.5
DATE	3-7-78	DEAD TYP	9.3.41
DEPTH DRILLED	225	TIME CONSTANT	1
DEPTH LOGGED	225	PROB DIA	1 1/2
FOOTAGE LOGGED		CALIBR	-
WELL DIAMETER	5	DIRECTIONAL SURVEY	-
WATER FACTOR	1.2	TEMPERATURE	-
RESISTIVITY	2.0 OHMS/INCH	OPERATOR	ERICKSON
SELF POTENTIAL	ALY/M	DRILLER	AL
INCHES	1ST RUN 2ND RUN 3RD RUN	CONTRACTOR	UNIVERSAL
FEET	210 125	LAST A.C. FT RUN	224-28
TOP	180 85	FLUID LEVEL	85
TOTAL FEET	30 40	REMARKS	
SCALE RUN	25 25		

GEOPHYSICAL LOG		DEPTH	P	C	A	STRIP LOG	LITHOLOGY LOG
		0					
		20					samples destroyed
		40					olive green mudstone, siliceous zones
		60					olive green mudstone, calcareous white, tuffaceous(?) layers
		80					carbonaceous zone blue grey - grey mudstone
		100					
		120					samples destroyed
		140					brownish red - brownish green mudstone
		160					carbonaceous zone, lignite frag
		180					red-brown - brown green mudstone
		200					
		220					samples destroyed
		240					
		260					
		280					
		300					
		320					
		340					
		360					
		380					
		400					
		420					
		440					
		460					
		480					
		500					
		520					
		540					
		560					
		580					
		600					
		620					
		640					
		660					
		680					
		700					
		720					
		740					
		760					
		780					
		800					
		820					
		840					
		860					
		880					
		900					
		920					
		940					
		960					
		980					
		1000					
		1020					
		1040					
		1060					
		1080					
		1100					
		1120					
		1140					
		1160					
		1180					
		1200					
		1220					
		1240					
		1260					
		1280					
		1300					
		1320					
		1340					
		1360					
		1380					
		1400					
		1420					
		1440					
		1460					
		1480					
		1500					
		1520					
		1540					
		1560					
		1580					
		1600					
		1620					
		1640					
		1660					
		1680					
		1700					
		1720					
		1740					
		1760					
		1780					
		1800					
		1820					
		1840					
		1860					
		1880					
		1900					
		1920					
		1940					
		1960					
		1980					
		2000					
		2020					
		2040					
		2060					
		2080					
		2100					
		2120					
		2140					
		2160					
		2180					
		2200					
		2220					
		2240					
		2260					
		2280					
		2300					
		2320					
		2340					
		2360					
		2380					
		2400					
		2420					
		2440					
		2460					
		2480					
		2500					
		2520					
		2540					
		2560					
		2580					
		2600					
		2620					
		2640					
		2660					
		2680					
		2700					
		2720					
		2740					
		2760					
		2780					
		2800					
		2820					
		2840					
		2860					
		2880					
		2900					
		2920					
		2940					
		2960					
		2980					
		3000					
		3020					
		3040					
		3060					
		3080					
		3100					
		3120					
		3140					
		3160					
		3180					
		3200					
		3220					
		3240					
		3260					
		3280					
		3300					
		3320					
		3340					
		3360					
		3380					
		3400					
		3420					
		3440					
		3460					
		3480					
		3500					
		3520					
		3540					
		3560					
		3580					
		3600					
		3620					
		3640					
		3660					
		3680					
		3700					
		3720					
		3740					
		3760					
		3780					
		3800					
		3820					
		3840					
		3860					
		3880					
		3900					
		3920					
		3940					
		3960					
		3980					
		4000					
		4020					
		4040					
		4060					
		4080					
		4100					
		4120					
		4140					
		4160					
		4180					
		4200					
		4220					
		4240					
		4260					
		4280					
		4300					
		4320					
		4340					
		4360					
		4380					
		4400					
		4420					
		4440					
		4460					
		4480					
		4500					
		4520					
		4540					
		4560					
		4580					
		4600					
		4620					
		4640					
		4660					
		4680					
		4700					
		4720					
		4740					
		4760					
		4780					
		4800					
		4820					
		4840					
		4860					
		4880					

GEOPHYSICAL LOG		DEPTH	P	C	A	STRIP LOG	LITHOLOGY LOG
							cgl, Qal, Tan
							siltst, Gint to Gry Grn, Carbonaceous
		20					silicified siltst, Grgy chert
		40					Intal Grn siltst + Whit Calc Tuff Bentonitic
		60					
		80					silicified siltst Gry Grn to Grn, Grn, Gry
		100					and Red Brn Chert
		120					Carbonaceous siltst + Lignite Blk to DK Gry
		140					siltst, DK Grn, Carbonaceous
		160					siltst Brn w/Weathered Andesitic Volcanic Fraggs
		180					siltst, Gry Brn
		200					siltst Grn
		210					siltst Yel Tan
		220					siltst, Grn, Sndy
		230					Carbonaceous siltst + Lignite DK Gry to Blk
		240					siltst, Grn
		250					Andesitic Volcanics Gry Brn + Red Brn
		260					
		270					
		280					
		290					
		300					
		310					
		320					
		330					
		340					
		350					
		360					
		370					
		380					
		390					
		400					
		410					
		420					
		430					
		440					
		450					
		460					
		470					
		480					
		490					
		500					
		510					
		520					
		530					
		540					
		550					
		560					
		570					
		580					
		590					
		600					
		610					
		620					
		630					
		640					
		650					
		660					
		670					
		680					
		690					
		700					
		710					
		720					
		730					
		740					
		750					
		760					
		770					
		780					
		790					
		800					
		810					
		820					
		830					
		840					
		850					
		860					
		870					
		880					
		890					
		900					
		910					
		920					
		930					
		940					
		950					
		960					
		970					
		980					
		990					
		1000					

MINERALS EXPLORATION CO.

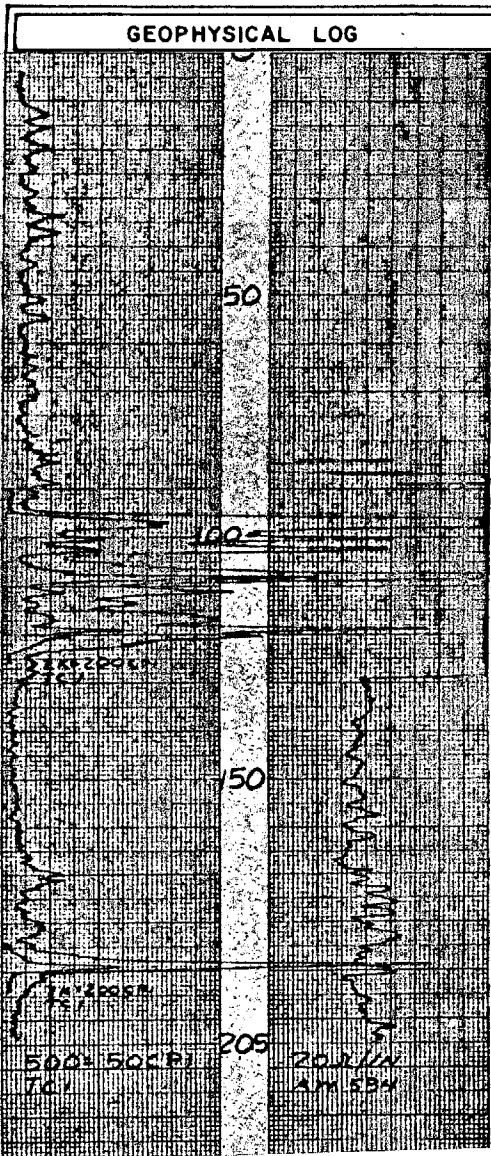
CAMPBELL, WYOMING

HOLE NO. AM 593

LOCATION	ANDERSON MINE	DATE	3-31-78
COUNTY	WYOMING	STATE	WY
SECTION	210	TOWNSHIP	210
RANGE	210	DEGREE	210
DEGREE	210	MINUTE	210
MINUTE	210	SECOND	210
SECOND	210	THIRD	210
THIRD	210	FOURTH	210
FOURTH	210	FIFTH	210
FIFTH	210	SIXTH	210
SIXTH	210	SEVENTH	210
SEVENTH	210	EIGHTH	210
EIGHTH	210	NINTH	210
NINTH	210	TENTH	210
TENTH	210	ELEVENTH	210
ELEVENTH	210	TWELFTH	210
TWELFTH	210	THIRTEENTH	210
THIRTEENTH	210	FOURTEENTH	210
FOURTEENTH	210	FIFTEENTH	210
FIFTEENTH	210	SIXTEENTH	210
SIXTEENTH	210	SEVENTEENTH	210
SEVENTEENTH	210	EIGHTEENTH	210
EIGHTEENTH	210	NINETEENTH	210
NINETEENTH	210	TWENTIETH	210
TWENTIETH	210	ONE AND TWENTY	210
ONE AND TWENTY	210	TWO AND TWENTY	210
TWO AND TWENTY	210	THREE AND TWENTY	210
THREE AND TWENTY	210	FOUR AND TWENTY	210
FOUR AND TWENTY	210	FIVE AND TWENTY	210
FIVE AND TWENTY	210	SIX AND TWENTY	210
SIX AND TWENTY	210	SEVEN AND TWENTY	210
SEVEN AND TWENTY	210	EIGHT AND TWENTY	210
EIGHT AND TWENTY	210	NINE AND TWENTY	210
NINE AND TWENTY	210	TEN AND TWENTY	210
TEN AND TWENTY	210	ELEVEN AND TWENTY	210
ELEVEN AND TWENTY	210	TWELVE AND TWENTY	210
TWELVE AND TWENTY	210	THIRTEEN AND TWENTY	210
THIRTEEN AND TWENTY	210	FOURTEEN AND TWENTY	210
FOURTEEN AND TWENTY	210	FIFTEEN AND TWENTY	210
FIFTEEN AND TWENTY	210	SIXTEEN AND TWENTY	210
SIXTEEN AND TWENTY	210	SEVENTEEN AND TWENTY	210
SEVENTEEN AND TWENTY	210	EIGHTEEN AND TWENTY	210
EIGHTEEN AND TWENTY	210	NINETEEN AND TWENTY	210
NINETEEN AND TWENTY	210	TWENTY AND TWENTY	210
TWENTY AND TWENTY	210	ONE AND TWENTY	210
ONE AND TWENTY	210	TWO AND TWENTY	210
TWO AND TWENTY	210	THREE AND TWENTY	210
THREE AND TWENTY	210	FOUR AND TWENTY	210
FOUR AND TWENTY	210	FIVE AND TWENTY	210
FIVE AND TWENTY	210	SIX AND TWENTY	210
SIX AND TWENTY	210	SEVEN AND TWENTY	210
SEVEN AND TWENTY	210	EIGHT AND TWENTY	210
EIGHT AND TWENTY	210	NINE AND TWENTY	210
NINE AND TWENTY	210	TEN AND TWENTY	210
TEN AND TWENTY	210	ELEVEN AND TWENTY	210
ELEVEN AND TWENTY	210	TWELVE AND TWENTY	210
TWELVE AND TWENTY	210	THIRTEEN AND TWENTY	210
THIRTEEN AND TWENTY	210	FOURTEEN AND TWENTY	210
FOURTEEN AND TWENTY	210	FIFTEEN AND TWENTY	210
FIFTEEN AND TWENTY	210	SIXTEEN AND TWENTY	210
SIXTEEN AND TWENTY	210	SEVENTEEN AND TWENTY	210
SEVENTEEN AND TWENTY	210	EIGHTEEN AND TWENTY	210
EIGHTEEN AND TWENTY	210	NINETEEN AND TWENTY	210
NINETEEN AND TWENTY	210	TWENTY AND TWENTY	210
TWENTY AND TWENTY	210	ONE AND TWENTY	210
ONE AND TWENTY	210	TWO AND TWENTY	210
TWO AND TWENTY	210	THREE AND TWENTY	210
THREE AND TWENTY	210	FOUR AND TWENTY	210
FOUR AND TWENTY	210	FIVE AND TWENTY	210
FIVE AND TWENTY	210	SIX AND TWENTY	210
SIX AND TWENTY	210	SEVEN AND TWENTY	210
SEVEN AND TWENTY	210	EIGHT AND TWENTY	210
EIGHT AND TWENTY	210	NINE AND TWENTY	210
NINE AND TWENTY	210	TEN AND TWENTY	210
TEN AND TWENTY	210	ELEVEN AND TWENTY	210
ELEVEN AND TWENTY	210	TWELVE AND TWENTY	210
TWELVE AND TWENTY	210	THIRTEEN AND TWENTY	210
THIRTEEN AND TWENTY	210	FOURTEEN AND TWENTY	210
FOURTEEN AND TWENTY	210	FIFTEEN AND TWENTY	210
FIFTEEN AND TWENTY	210	SIXTEEN AND TWENTY	210
SIXTEEN AND TWENTY	210	SEVENTEEN AND TWENTY	210
SEVENTEEN AND TWENTY	210	EIGHTEEN AND TWENTY	210
EIGHTEEN AND TWENTY	210	NINETEEN AND TWENTY	210
NINETEEN AND TWENTY	210	TWENTY AND TWENTY	210
TWENTY AND TWENTY	210	ONE AND TWENTY	210
ONE AND TWENTY	210	TWO AND TWENTY	210
TWO AND TWENTY	210	THREE AND TWENTY	210
THREE AND TWENTY	210	FOUR AND TWENTY	210
FOUR AND TWENTY	210	FIVE AND TWENTY	210
FIVE AND TWENTY	210	SIX AND TWENTY	210
SIX AND TWENTY	210	SEVEN AND TWENTY	210
SEVEN AND TWENTY	210	EIGHT AND TWENTY	210
EIGHT AND TWENTY	210	NINE AND TWENTY	210
NINE AND TWENTY	210	TEN AND TWENTY	210
TEN AND TWENTY	210	ELEVEN AND TWENTY	210
ELEVEN AND TWENTY	210	TWELVE AND TWENTY	210
TWELVE AND TWENTY	210	THIRTEEN AND TWENTY	210
THIRTEEN AND TWENTY	210	FOURTEEN AND TWENTY	210
FOURTEEN AND TWENTY	210	FIFTEEN AND TWENTY	210
FIFTEEN AND TWENTY	210	SIXTEEN AND TWENTY	210
SIXTEEN AND TWENTY	210	SEVENTEEN AND TWENTY	210
SEVENTEEN AND TWENTY	210	EIGHTEEN AND TWENTY	210
EIGHTEEN AND TWENTY	210	NINETEEN AND TWENTY	210
NINETEEN AND TWENTY	210	TWENTY AND TWENTY	210
TWENTY AND TWENTY	210	ONE AND TWENTY	210
ONE AND TWENTY	210	TWO AND TWENTY	210
TWO AND TWENTY	210	THREE AND TWENTY	210
THREE AND TWENTY	210	FOUR AND TWENTY	210
FOUR AND TWENTY	210	FIVE AND TWENTY	210
FIVE AND TWENTY	210	SIX AND TWENTY	210
SIX AND TWENTY	210	SEVEN AND TWENTY	210
SEVEN AND TWENTY	210	EIGHT AND TWENTY	210
EIGHT AND TWENTY	210	NINE AND TWENTY	210
NINE AND TWENTY	210	TEN AND TWENTY	210
TEN AND TWENTY	210	ELEVEN AND TWENTY	210
ELEVEN AND TWENTY	210	TWELVE AND TWENTY	210
TWELVE AND TWENTY	210	THIRTEEN AND TWENTY	210
THIRTEEN AND TWENTY	210	FOURTEEN AND TWENTY	210
FOURTEEN AND TWENTY	210	FIFTEEN AND TWENTY	210
FIFTEEN AND TWENTY	210	SIXTEEN AND TWENTY	210
SIXTEEN AND TWENTY	210	SEVENTEEN AND TWENTY	210
SEVENTEEN AND TWENTY	210	EIGHTEEN AND TWENTY	210
EIGHTEEN AND TWENTY	210	NINETEEN AND TWENTY	210
NINETEEN AND TWENTY	210	TWENTY AND TWENTY	210
TWENTY AND TWENTY	210	ONE AND TWENTY	210
ONE AND TWENTY	210	TWO AND TWENTY	210
TWO AND TWENTY	210	THREE AND TWENTY	210
THREE AND TWENTY	210	FOUR AND TWENTY	210
FOUR AND TWENTY	210	FIVE AND TWENTY	210
FIVE AND TWENTY	210	SIX AND TWENTY	210
SIX AND TWENTY	210	SEVEN AND TWENTY	210
SEVEN AND TWENTY	210	EIGHT AND TWENTY	210
EIGHT AND TWENTY	210	NINE AND TWENTY	210
NINE AND TWENTY	210	TEN AND TWENTY	210
TEN AND TWENTY	210	ELEVEN AND TWENTY	210
ELEVEN AND TWENTY	210	TWELVE AND TWENTY	210
TWELVE AND TWENTY	210	THIRTEEN AND TWENTY	210
THIRTEEN AND TWENTY	210	FOURTEEN AND TWENTY	210
FOURTEEN AND TWENTY	210	FIFTEEN AND TWENTY	210
FIFTEEN AND TWENTY	210	SIXTEEN AND TWENTY	210
SIXTEEN AND TWENTY	210	SEVENTEEN AND TWENTY	210
SEVENTEEN AND TWENTY	210	EIGHTEEN AND TWENTY	210
EIGHTEEN AND TWENTY	210	NINETEEN AND TWENTY	210
NINETEEN AND TWENTY	210	TWENTY AND TWENTY	210
TWENTY AND TWENTY	210	ONE AND TWENTY	210
ONE AND TWENTY	210	TWO AND TWENTY	210
TWO AND TWENTY	210	THREE AND TWENTY	210
THREE AND TWENTY	210	FOUR AND TWENTY	210
FOUR AND TWENTY	210	FIVE AND TWENTY	210
FIVE AND TWENTY	210	SIX AND TWENTY	210
SIX AND TWENTY	210	SEVEN AND TWENTY	210
SEVEN AND TWENTY	210	EIGHT AND TWENTY	210
EIGHT AND TWENTY	210	NINE AND TWENTY	210
NINE AND TWENTY	210	TEN AND TWENTY	210
TEN AND TWENTY	210	ELEVEN AND TWENTY	210
ELEVEN AND TWENTY	210	TWELVE AND TWENTY	210
TWELVE AND TWENTY	210	THIRTEEN AND TWENTY	210
THIRTEEN AND TWENTY	210	FOURTEEN AND TWENTY	210
FOURTEEN AND TWENTY	210	FIFTEEN AND TWENTY	210
FIFTEEN AND TWENTY	210	SIXTEEN AND TWENTY	210
SIXTEEN AND TWENTY	210	SEVENTEEN AND TWENTY	210
SEVENTEEN AND TWENTY	210	EIGHTEEN AND TWENTY	210
EIGHTEEN AND TWENTY	210	NINETEEN AND TWENTY	210
NINETEEN AND TWENTY	210	TWENTY AND TWENTY	210
TWENTY AND TWENTY	210	ONE AND TWENTY	210
ONE AND TWENTY	210	TWO AND TWENTY	210

SECTION _____ TOWNSHIP _____ RANGE _____ T.D. 200 P.D. _____

SECTION _____ TOWNSHIP _____ RANGE _____ T.D. 200 P.D. _____



DEPTH	LITHOLOGY	GEOCHEMISTRY
0-20	white ls red brown silt, sand, gravel	
20-40	olive green mudstone, siliceous zones siliceous zone	
40-60		
60-80	siliceous, red chert frags siliceous	
80-90	siliceous, red chert frags	
90-100	lignite	
100-120	lignite carbonaceous zone, black to grey mudstone, lignite zones	
120-140	interbd lignite	
140-160	interbd dk grey (carb) mudst + reddish brown mudstone + lignite	
160-180	interbd. grey brown mudst + dk grey mudst. (carb) + lignite	
180-200	interbd yellow-brown mudst + dk grey mudst + lignite	
200-220	interbd grey mudst, green mudst, yellow mudst, red mudst.	
220-240		
240-260		
260-280		
280-300		
300-320		
320-340		
340-360		
360-380		
380-400		
400-420		
420-440		
440-460		
460-480		
480-500		
500-520		
520-540		
540-560		
560-580		
580-600		
600-620		
620-640		
640-660		
660-680		
680-700		
700-720		
720-740		
740-760		
760-780		
780-800		
800-820		
820-840		
840-860		
860-880		
880-900		
900-920		
920-940		
940-960		
960-980		
980-1000		

MINERALS EXPLORATION CO. CASPER, WYOMING

AREA	SECTION	SHEET
GRID POINT	ELEVATION	NORTHING EASTING
COUNTY	TOWNSHIP	RANGE
SEC.	TWP.	R.

BOREHOLE DATA		LOG DATA	
HOLE NO.	DATE	WELL NAME	TYPE
DRILLER	LOGGERS	WELL DEPTH	WELL DIA.
TEST DATE	TEST TIME	WELL STATUS	WELL TYPE
TEST RESULTS	TEST COMMENTS	WELL LOCATION	WELL OWNER

MINERALS EXPLORATION CO.				CASPER, WYOMING	
AREA <u>ANDERSON</u>		SHEET <u>100</u>			
GRID POINT <u>100</u>		ELEVATION <u>100</u>		DATE <u>100</u>	
COUNTY <u>WYOMING</u>		TOWNSHIP <u>100</u>		RANGE <u>100</u>	
SEC. <u>100</u>		TWP. <u>100</u>		R. <u>100</u>	
<div style="display: flex; justify-content: space-between;"> <div> <p>BOROHOLE DATA</p> <p>DATE <u>100</u></p> <p>DRILLER <u>100</u></p> <p>DRILL TYPE <u>100</u></p> <p>DR. DIA. <u>100</u></p> <p>DRILL DEPTH <u>100</u></p> <p>LOG <u>100</u></p> <p>REMARKS <u>100</u></p> </div> <div> <p>LOG DATA</p> <p>LOG NO. <u>100</u></p> <p>LOG DATE <u>100</u></p> <p>LOG TIME <u>100</u></p> <p>LOG TYPE <u>100</u></p> <p>LOG BY <u>100</u></p> <p>LOG FOR <u>100</u></p> <p>LOG OF <u>100</u></p> <p>LOG BY <u>100</u></p> <p>LOG FOR <u>100</u></p> <p>LOG OF <u>100</u></p> </div> </div>					

PROJECT Anderson Mine HOLE SIZE _____ ☒ AIR ☐ WATER HOLE NO. AM 595
ELEVATION _____ NORTH _____ EAST _____ LOGGED BY CEH DATE 3-7-78
SECTION _____ TOWNSHIP _____ RANGE _____ T.D. 195 P.D. _____

Geophysical Log

DEPTH

PC A

STRIP LOG

LITHOLOGY LOG

500=500CR
TCL

20A/IN
AM 595

195

200

20

40

60

80

100

120

140

160

180

200

220

240

260

280

300

320

340

360

380

400

420

440

460

480

500

520

540

560

580

600

620

640

660

680

700

720

740

760

780

800

820

840

860

880

900

920

940

960

980

1000

1020

1040

1060

1080

1100

1120

1140

1160

1180

1200

1220

1240

1260

1280

1300

1320

1340

1360

1380

1400

1420

1440

1460

1480

1500

1520

1540

1560

1580

1600

1620

1640

1660

1680

1700

1720

1740

1760

1780

1800

1820

1840

1860

1880

1900

1920

1940

1960

1980

2000

2020

2040

2060

2080

2100

2120

2140

2160

2180

2200

2220

2240

2260

2280

2300

2320

2340

2360

2380

2400

2420

2440

2460

2480

2500

2520

2540

2560

2580

2600

2620

2640

2660

2680

2700

2720

2740

2760

2780

2800

2820

2840

2860

2880

2900

2920

2940

2960

2980

3000

3020

3040

3060

3080

3100

3120

3140

3160

3180

3200

3220

3240

3260

3280

3300

3320

3340

3360

3380

3400

3420

3440

3460

3480

3500

3520

3540

3560

3580

3600

3620

3640

3660

3680

3700

3720

3740

3760

3780

3800

3820

3840

3860

3880

3900

3920

3940

3960

3980

4000

4020

4040

4060

4080

4100

4120

4140

4160

4180

4200

4220

4240

4260

4280

4300

4320

4340

4360

4380

4400

4420

4440

4460

4480

4500

4520

4540

4560

4580

4600

4620

4640

4660

4680

4700

4720

4740

4760

4780

4800

4820

4840

4860

4880

4900

4920

4940

4960

4980

5000

5020

5040

5060

5080

5100

5120

5140

5160

5180

5200

5220

5240

5260

5280

5300

5320

5340

5360

5380

5400

5420

5440

5460

5480

5500

5520

5540

5560

5580

5600

5620

5640

5660

5680

5700

5720

5740

5760

5780

5800

5820

5840

5860

5880

5900

5920

5940

5960

5980

6000

6020

6040

6060

6080

6100

6120

6140

6160

6180

6200

6220

6240

6260

6280

6300

6320

6340

6360

6380

6400

6420

6440

6460

6480

6500

6520

6540

6560

6580

6600

6620

6640

6660

6680

6700

6720

6740

6760

6780

6800

6820

6840

6860

6880

6900

6920

6940

6960

6980

7000

7020

7040

7060

7080

7100

7120

7140

7160

7180

7200

7220

7240

7260

7280

7300

7320

7340

7360

7380

7400

7420

7440

7460

7480

7500

7520

7540

7560

7580

7600

7620

7640

7660

7680

7700

7720

7740

7760

7780

7800

7820

7840

7860

7880

7900

7920

7940

7960

7980

8000

8020

8040

8060

8080

8100

8120

8140

8160

8180

8200

8220

8240

8260

8280

8300

8320

8340

8360

8380

8400

8420

8440

8460

8480

8500

8520

8540

8560

8580

8600

8620

8640

8660

8680

8700

8720

8740

8760

8780

8800

8820

8840

8860

8880

8900

8920

8940

8960

898

PROJECT ANDERSON MINE

HOLE SIZE

☒ AIR ☐ WATER

HOLE NO.

AM 596

ELEVATION

NORTH

EAST

LOGGED BY J.C. TAYLOR

DATE 3/31/72

SECTION

TOWNSHIP

RANGE

T.D. 120

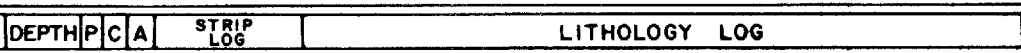
P. D.

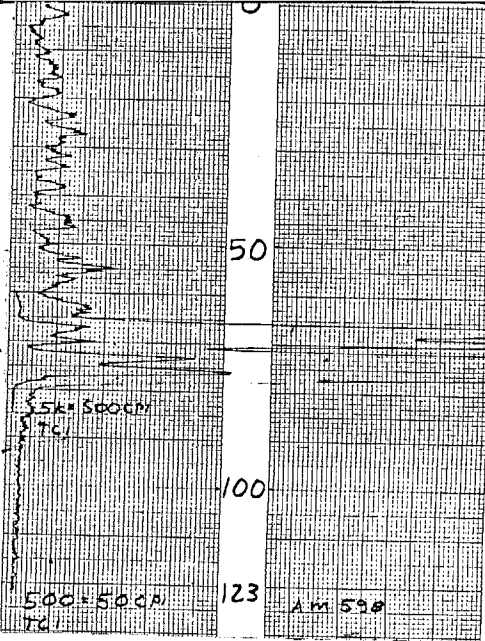
VENTURE

Geophysical log and lithology log for well AM 596. The geophysical log shows resistivity and depth. The lithology log describes the rock formations encountered during drilling.

DEPTH	P	C	A	STRIP LOG	LITHOLOGY LOG
0					grey green siliceous mudstone
20					lt green to lt grey siliceous mudstn.
40					green mudstn.
60					lt green to lt grey mudstn.
80					grey to blue grey mudstn (some lignite)
100					grey, brownish grey, blue grey mudstn w/ interbed lignite
120					grey mudstn.
140					lt grey green mudstn.
160					red brown, greenish brown mudstn.
180					red brownish red mudstn.
200					interbed brownish red mudstn & green mudstn.
220					brownish green mudstn.
240					reddish brown mudstn
260					lt grey andesite frags.

GEOPHYSICAL LOG	DEPTH	P	C	A	STRIP LOG	LITHOLOGY LOG
-----------------	-------	---	---	---	-----------	---------------

[illegible]

GEOPHYSICAL LOG		DEPTH	P	C	A	STRIP LOG	LITHOLOGY LOG
		0					siliceous zones calc. calc. veins
		20					olive green mudstone
		40					
		60					siliceous zone
		80					interbedded orange calc. mudst. Fe stain?
		100					lignite
		120					interbedded lignite
		140					carbonaceous zone, black to grey mudstone, lignitic zones
		160					
		180					greyish purple silt, dk purplish black andesite frags.
		200					
		220					
		240					
		260					
		280					
		300					
		320					
		340					
		360					
		380					
		400					
		420					
		440					
		460					
		480					
		500					

MINERALS EXPLORATION CO.

CASPER, WYOMING

HOLE NO. AM 598

LOCATION ANDERSON MINE

COUNTY YAVAPAI STATE AZ

GP. _____ ELEV. _____

DATE 3-7-78

DEPTH DRILLED 182

DEPTH LOGGED 182

FOOTAGE LOGGED _____

HOLE DIAMETER 5 7/8

WATER FACTOR _____

RESISTIVITY _____

SELF POTENTIAL _____

REMARKS

1ST RUN

2ND RUN

3RD RUN

4TH RUN

5TH RUN

6TH RUN

7TH RUN

8TH RUN

9TH RUN

10TH RUN

11TH RUN

12TH RUN

13TH RUN

14TH RUN

15TH RUN

16TH RUN

17TH RUN

18TH RUN

19TH RUN

20TH RUN

21TH RUN

22TH RUN

23TH RUN

24TH RUN

25TH RUN

26TH RUN

27TH RUN

28TH RUN

29TH RUN

30TH RUN

31TH RUN

32TH RUN

33TH RUN

34TH RUN

35TH RUN

36TH RUN

37TH RUN

38TH RUN

39TH RUN

40TH RUN

41TH RUN

42TH RUN

43TH RUN

44TH RUN

45TH RUN

46TH RUN

47TH RUN

48TH RUN

49TH RUN

50TH RUN

51TH RUN

52TH RUN

53TH RUN

54TH RUN

55TH RUN

56TH RUN

57TH RUN

58TH RUN

59TH RUN

60TH RUN

61TH RUN

62TH RUN

63TH RUN

64TH RUN

65TH RUN

66TH RUN

67TH RUN

68TH RUN

69TH RUN

70TH RUN

71TH RUN

72TH RUN

73TH RUN

74TH RUN

75TH RUN

76TH RUN

77TH RUN

78TH RUN

79TH RUN

80TH RUN

81TH RUN

82TH RUN

83TH RUN

84TH RUN

85TH RUN

86TH RUN

87TH RUN

88TH RUN

89TH RUN

90TH RUN

91TH RUN

92TH RUN

93TH RUN

94TH RUN

95TH RUN

96TH RUN

97TH RUN

98TH RUN

99TH RUN

100TH RUN

P.D. _____

[illegible]