



CONTACT INFORMATION
Mining Records Curator
Arizona Geological Survey
3550 N. Central Ave, 2nd floor
Phoenix, AZ, 85012
602-771-1601
<http://www.azgs.az.gov>
inquiries@azgs.az.gov

The following file is part of the Anderson Mine Collection

ACCESS STATEMENT

These digitized collections are accessible for purposes of education and research. We have indicated what we know about copyright and rights of privacy, publicity, or trademark. Due to the nature of archival collections, we are not always able to identify this information. We are eager to hear from any rights owners, so that we may obtain accurate information. Upon request, we will remove material from public view while we address a rights issue.

CONSTRAINTS STATEMENT

The Arizona Geological Survey does not claim to control all rights for all materials in its collection. These rights include, but are not limited to: copyright, privacy rights, and cultural protection rights. The User hereby assumes all responsibility for obtaining any rights to use the material in excess of "fair use."

The Survey makes no intellectual property claims to the products created by individual authors in the manuscript collections, except when the author deeded those rights to the Survey or when those authors were employed by the State of Arizona and created intellectual products as a function of their official duties. The Survey does maintain property rights to the physical and digital representations of the works.

QUALITY STATEMENT

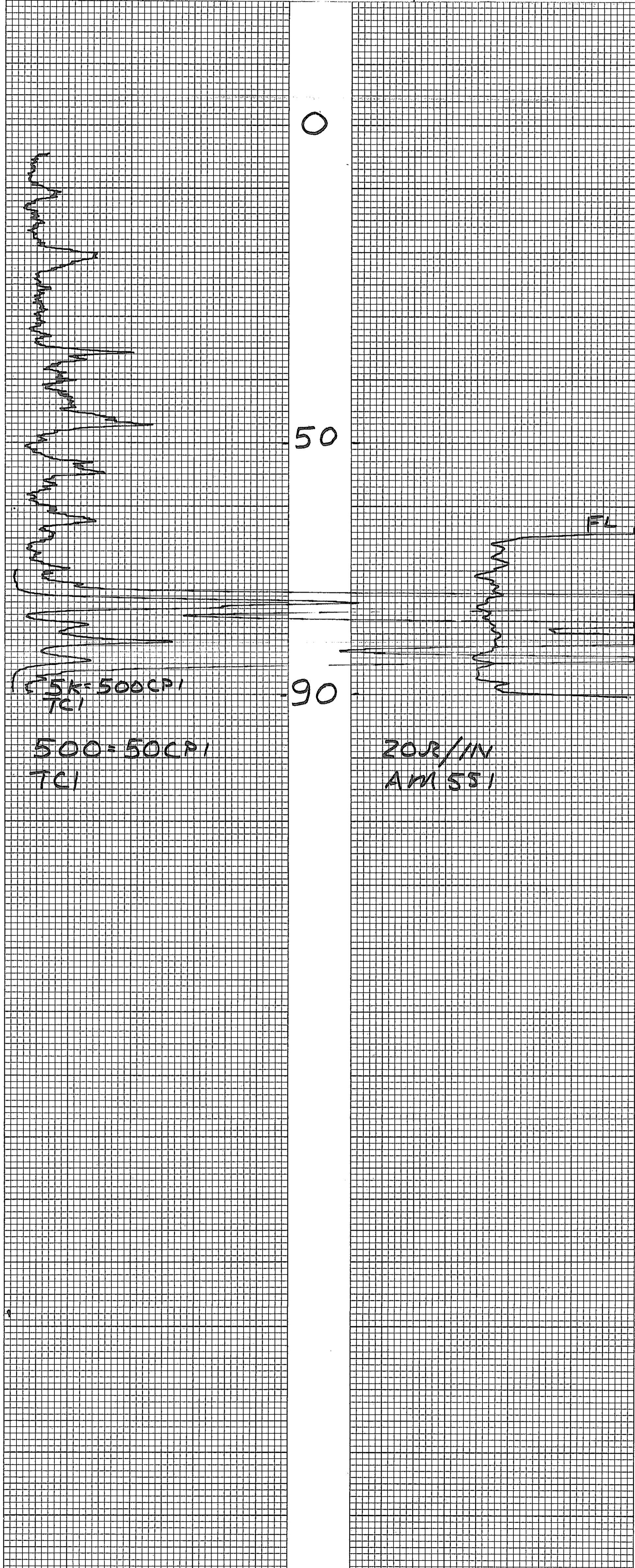
The Arizona Geological Survey is not responsible for the accuracy of the records, information, or opinions that may be contained in the files. The Survey collects, catalogs, and archives data on mineral properties regardless of its views of the veracity or accuracy of those data.

MINERALS EXPLORATION CO.

CASPER, WYOMING

HOLE NO. AM 551

LOCATION ANDERSON MINE				GAMMA SCALE	500=50CPI
COUNTY YAUAPAI STATE AZ				PROBE TYPE	SCINT
GP.				K-FACTOR	6.00E-5
ELEV.				DEAD TIME	9.243
SEC.				TIME CONSTANT	1
TWP.				PROBE DIA.	1 5/8
RGE.				CALIPER	-
DATE	3-13-78			DIRECTIONAL SURVEY	-
DEPTH DRILLED	90			TEMPERATURE	-
DEPTH LOGGED	91			OPERATOR	ERICKSON
FOOTAGE LOGGED				DRILLER	AL
HOLE DIAMETER	5 1/8			CONTRACTOR	UNIVERSAL
WATER FACTOR	1.2			LAST A.E.C. PIT RUN	
RESISTIVITY	20 OHMS/INCH			FLUID LEVEL	64
SELF POTENTIAL	M.V./IN.			REMARKS:	
RERUNS	1ST. RUN	2ND. RUN	3RD. RUN		
BOTTOM	90				
TOP	70				
TOTAL FEET	20				
SCALE RUN	5K				

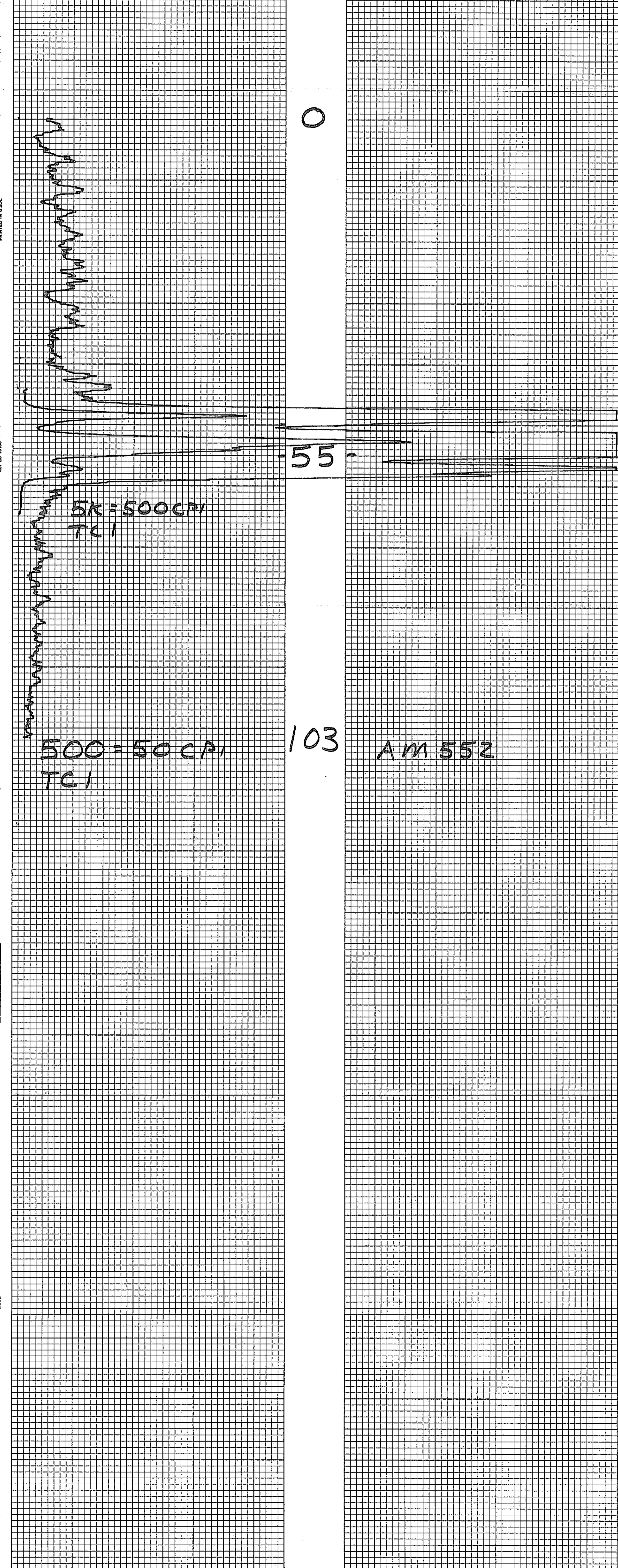


MINERALS EXPLORATION CO.

CASPER, WYOMING

HOLE NO. Am 552

LOCATION ANDERSON MINE				GAMMA SCALE	500=50CPI
COUNTY YAVAPAI STATE AZ				PROBE TYPE	SCINT
GP.				K-FACTOR	6.00E-5
ELEV.				DEAD TIME	9.2 MS
SEC.				TIME CONSTANT	1
TWP.				PROBE DIA.	1 5/8
RGE.				CALIPER	-
DATE	3-8-78			DIRECTIONAL SURVEY	-
DEPTH DRILLED	105			TEMPERATURE	-
DEPTH LOGGED	103			OPERATOR	ERICKSON
FOOTAGE LOGGED				DRILLER	AL
HOLE DIAMETER	5 1/8			CONTRACTOR	UNIVERSAL
WATER FACTOR	-			LAST A.E.C. PIT RUN	2-24-78
RESISTIVITY	- OHMS/INCH			FLUID LEVEL	
SELF POTENTIAL	- M.V./IN.			REMARKS:	
RERUNS	1ST. RUN	2ND. RUN	3RD. RUN		
BOTTOM	65				
TOP	45				
TOTAL FEET	20				
SCALE RUN	5K				



PRINTED IN U.S.A.

No. GC-1333

GRAPHIC CONTROLS CORPORATION BUFFALO, NEW YORK

RECORDING CHARTS

PRINTED IN U.S.A.

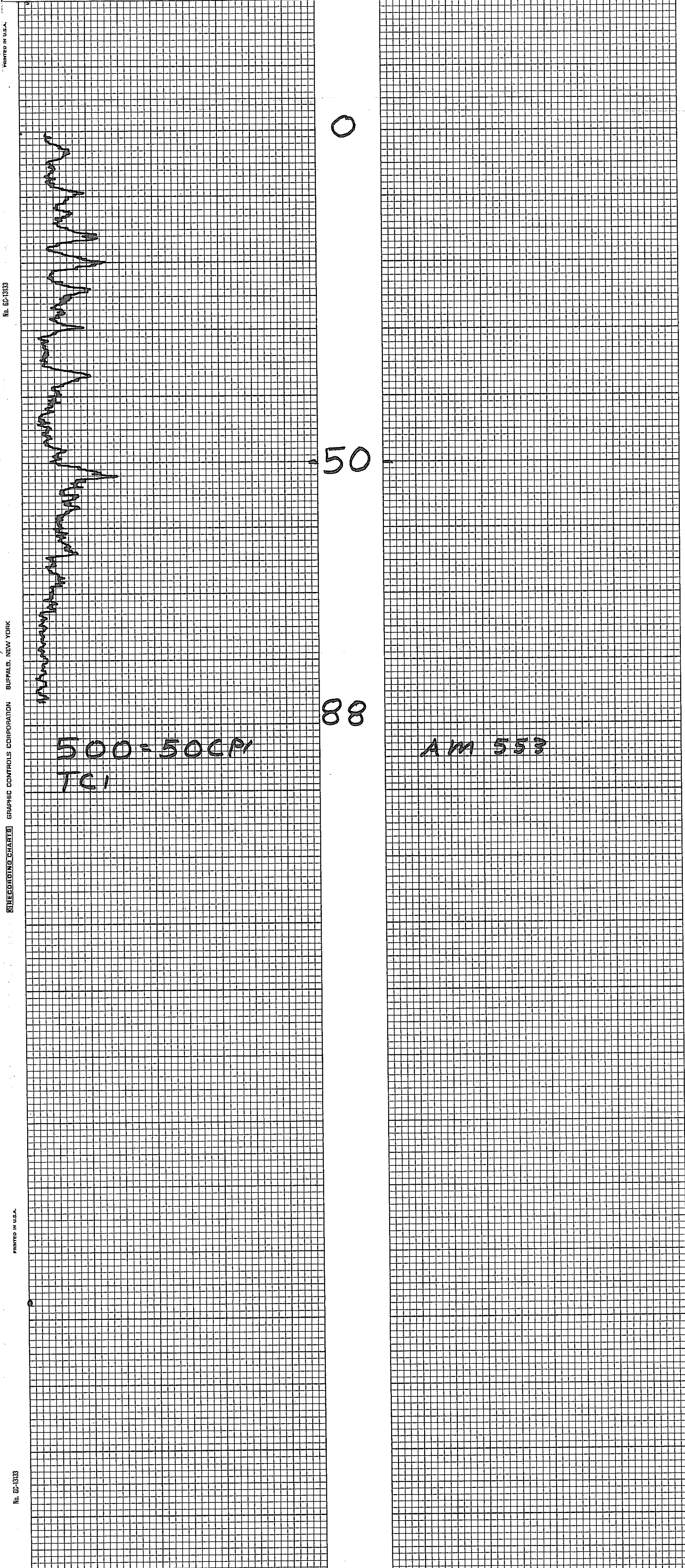
No. GC-1333

MINERALS EXPLORATION CO.

CASPER, WYOMING

HOLE NO. AM 553

LOCATION ANDERSON MINE				GAMMA SCALE	500=50CPI
COUNTY YAVAPI STATE AZ				PROBE TYPE	SCINT
GP. ELEV.				K-FACTOR	6.00E-5
SEC. TWP. RGE.				DEAD TIME	9.2MS
DATE 3-17-78				TIME CONSTANT	1
DEPTH DRILLED 90				PROBE DIA.	1 5/8
DEPTH LOGGED 88				CALIPER	
FOOTAGE LOGGED				DIRECTIONAL SURVEY	
HOLE DIAMETER 6				TEMPERATURE	
WATER FACTOR -				OPERATOR	
RESISTIVITY - OHMS/INCH				DRILLER	DENNIS
SELF POTENTIAL - M.V./IN.				CONTRACTOR	VENTURE
RERUNS 1ST. RUN 2ND. RUN 3RD. RUN				LAST A.E.C. PIT RUN	2-24-78
BOTTOM				FLUID LEVEL	
TOP				REMARKS:	
TOTAL FEET					
SCALE RUN					

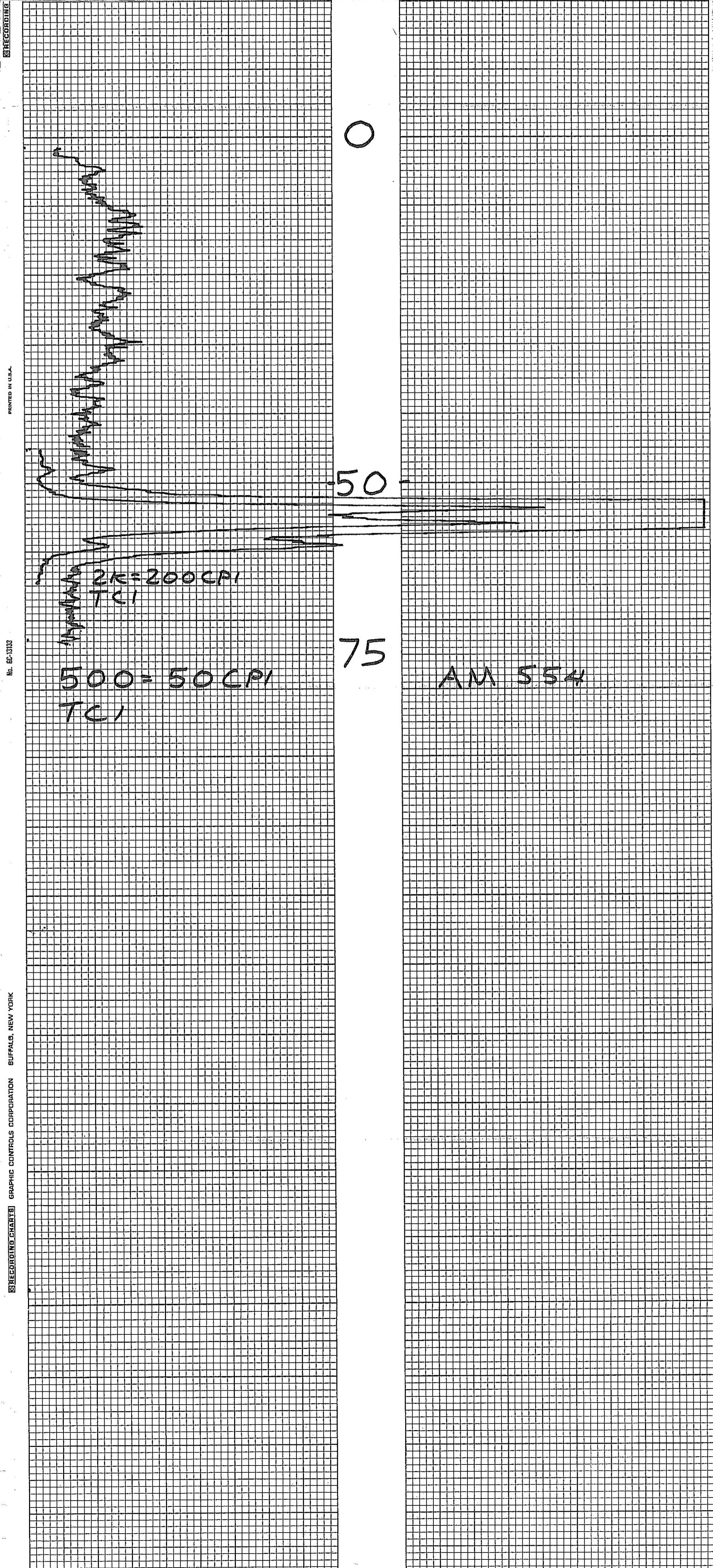


MINERALS EXPLORATION CO.

CASPER, WYOMING

HOLE NO. AM 554

LOCATION ANDERSON MINE				GAMMA SCALE	500=50CPI
COUNTY YAVAPAI STATE AZ				PROBE TYPE	SCINT
GP. ELEV.				K-FACTOR	6.00E-5
SEC. TWP. RGE.				DEAD TIME	9.2US
DATE 3-17-78				TIME CONSTANT	1
DEPTH DRILLED 75				PROBE DIA.	1 5/8
DEPTH LOGGED 75				CALIPER	
FOOTAGE LOGGED				DIRECTIONAL SURVEY	
HOLE DIAMETER 6				TEMPERATURE	
WATER FACTOR -				OPERATOR	
RESISTIVITY - OHMS/INCH				DRILLER	DENNIS
SELF POTENTIAL - M.V./IN.				CONTRACTOR	VENTURE
RERUNS 1ST. RUN 2ND. RUN 3RD. RUN				LAST A.E.C. PIT RUN	2-24-78
BOTTOM 65				FLUID LEVEL	
TOP 45				REMARKS:	
TOTAL FEET 20					
SCALE RUN 2K					

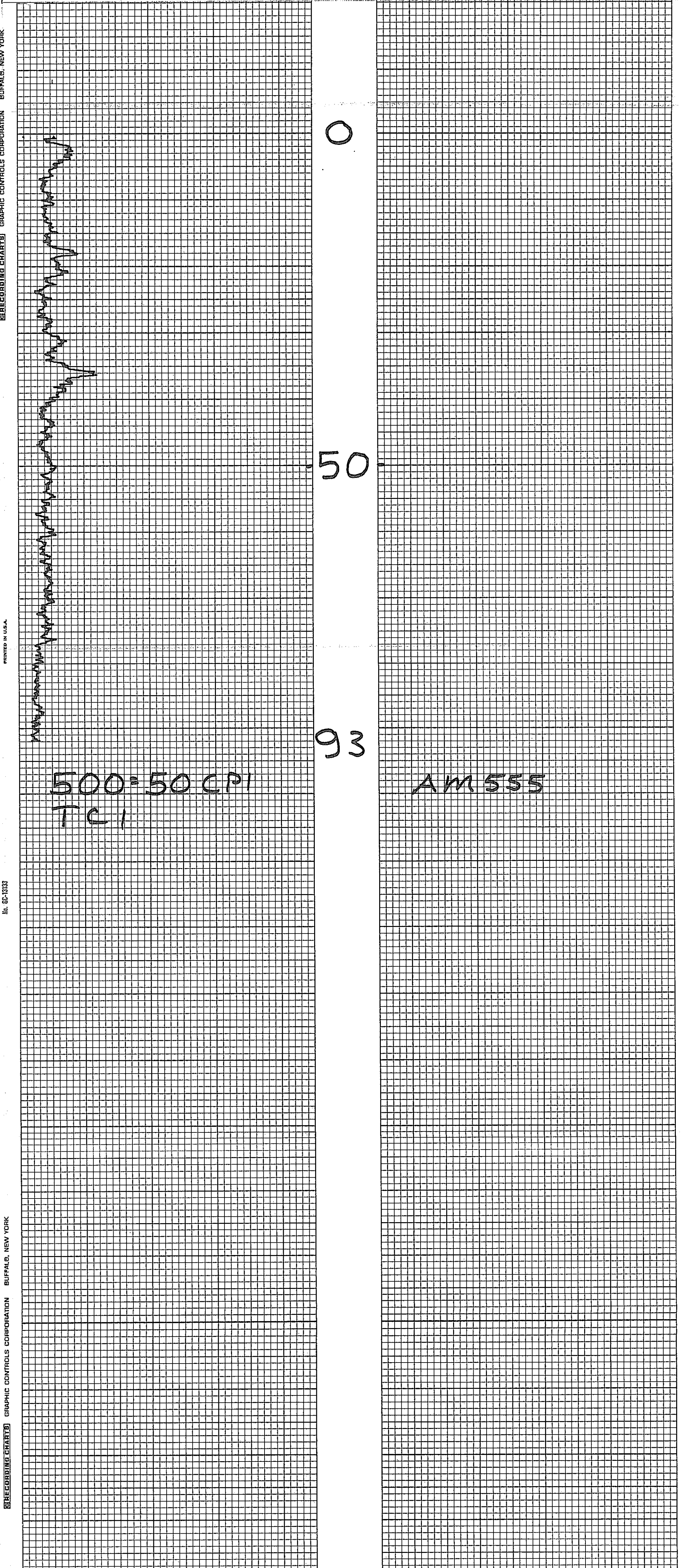


MINERALS EXPLORATION CO.

CASPER, WYOMING

HOLE NO. AM 555

LOCATION ANDERSON MINE				GAMMA SCALE	500=50CPI
COUNTY YAVAPI STATE AZ				PROBE TYPE	SCINT
GP.				K-FACTOR	6.00E-5
ELEV.				DEAD TIME	9.2ms
SEC.				TIME CONSTANT	1
TWP.				PROBE DIA.	1 5/8
RGE.				CALIPER	-
DATE	3-15-78			DIRECTIONAL SURVEY	-
DEPTH DRILLED	100			TEMPERATURE	-
DEPTH LOGGED	93			OPERATOR	ERICKSON
FOOTAGE LOGGED				DRILLER	DENNIS
HOLE DIAMETER	6			CONTRACTOR	VENTURE
WATER FACTOR	-			LAST A.E.C. PIT RUN	2-24-78
RESISTIVITY	-			OHMS/INCH	
SELF POTENTIAL	-			M.V./IN.	
RERUNS	1ST. RUN	2ND. RUN	3RD. RUN	REMARKS:	
BOTTOM					
TOP					
TOTAL FEET					
SCALE RUN					

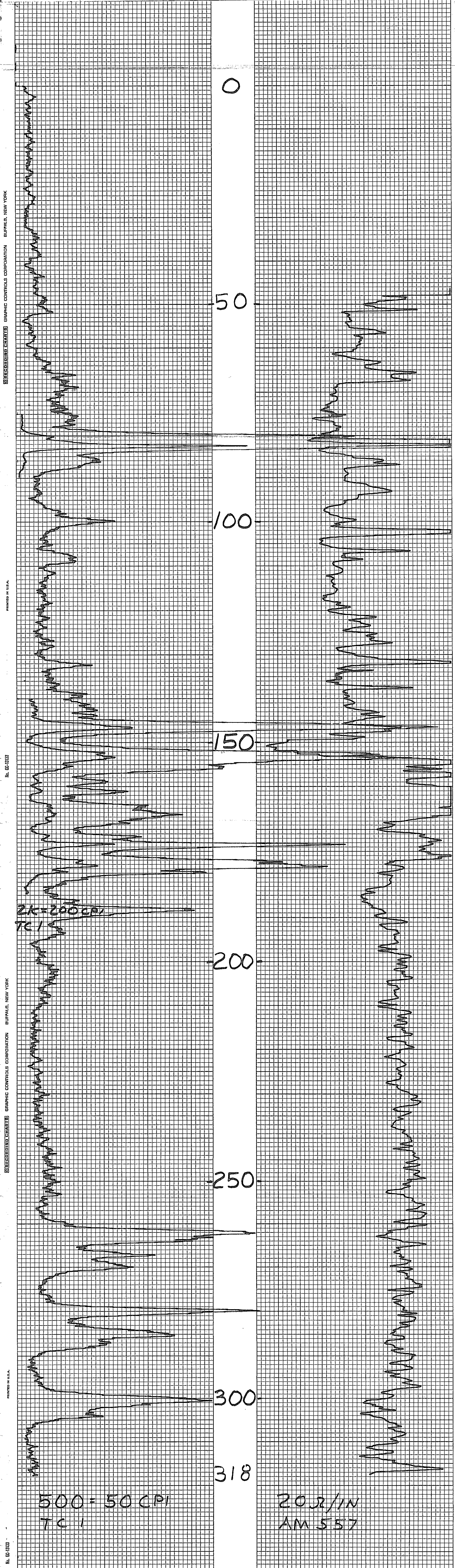


MINERALS EXPLORATION CO.

CASPER, WYOMING

HOLE NO. AM 557

LOCATION ANDERSON MINE				GAMMA SCALE	500=50CPI
COUNTY YAVAPAI STATE AZ				PROBE TYPE	SCINT
GP.				K-FACTOR	6.00E-5
ELEV.				DEAD TIME	9.4 μSEC
SEC.				TIME CONSTANT	1 SEC
TWP.				PROBE DIA.	1 5/8
RGE.				CALIPER	-
DATE	2-28-78			DIRECTIONAL SURVEY	-
DEPTH DRILLED	320			TEMPERATURE	-
DEPTH LOGGED	318			OPERATOR	ERICKSON
FOOTAGE LOGGED	378			DRILLER	JIM
HOLE DIAMETER	5/8			CONTRACTOR	HARRIS
WATER FACTOR	12			LAST A.E.C. PIT RUN	2-24-78
RESISTIVITY	20 OHMS/INCH			FLUID LEVEL	40
SELF POTENTIAL	- M.V./IN.			REMARKS:	
1ST. RUN	2ND. RUN	3RD. RUN			
BOTTOM	185	90			
TOP	140	75			
TOTAL FEET	45	15			
SCALE RUN	2K	5K			

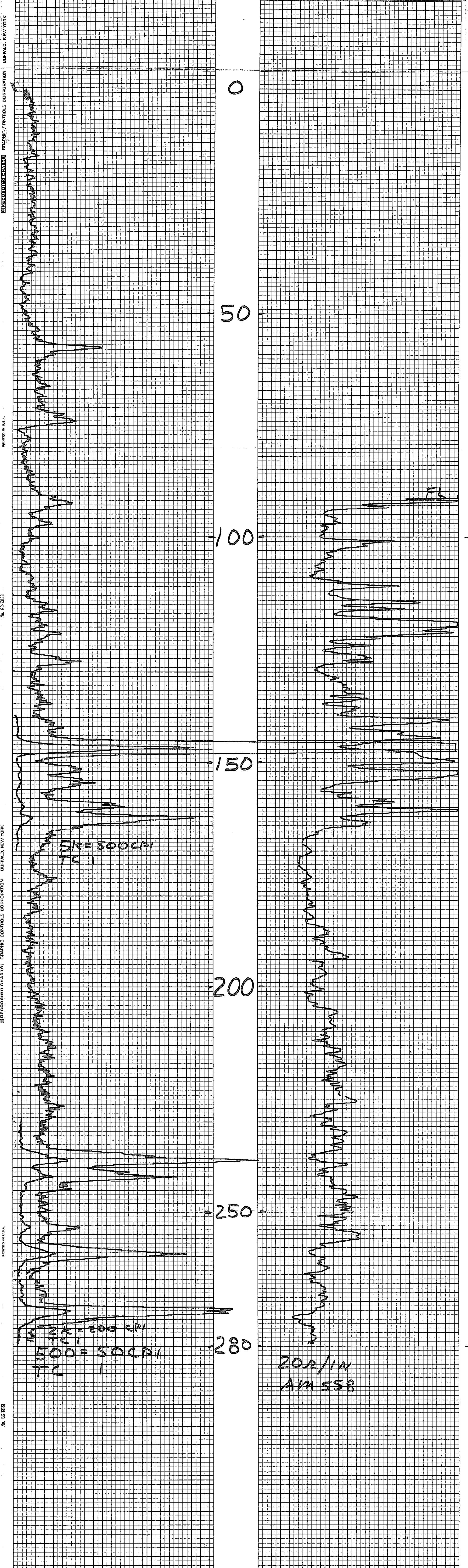


MINERALS EXPLORATION CO.

CASPER, WYOMING

HOLE NO. AM 558

LOCATION ANDERSON MINE				GAMMA SCALE	500=50CPI
COUNTY YAVAPAI STATE AZ				PROBE TYPE	SCINT
GP. ELEV.				K-FACTOR	6.00 E-5
SEC. TWP. RGE.				DEAD TIME	9.4 MS
DATE	3-1-78			TIME CONSTANT	1
DEPTH DRILLED	290			PROBE DIA.	1 5/8
DEPTH LOGGED	280			CALIPER	—
FOOTAGE LOGGED				DIRECTIONAL SURVEY	—
HOLE DIAMETER	5 1/8			TEMPERATURE	—
WATER FACTOR	1.2			OPERATOR	ERICKSON
RESISTIVITY	20 OHMS/INCH			DRILLER	JIM
SELF POTENTIAL	— M.V./IN.			CONTRACTOR	UNIVERSAL
RERUNS	1ST. RUN	2ND. RUN	3RD. RUN	LAST A.E.C. PIT RUN	2-24-78
BOTTOM	280	265	170	FLUID LEVEL	90
TOP	265	230	140	REMARKS:	
TOTAL FEET	15	35	30		
SCALE RUN	2K	2K	5K		



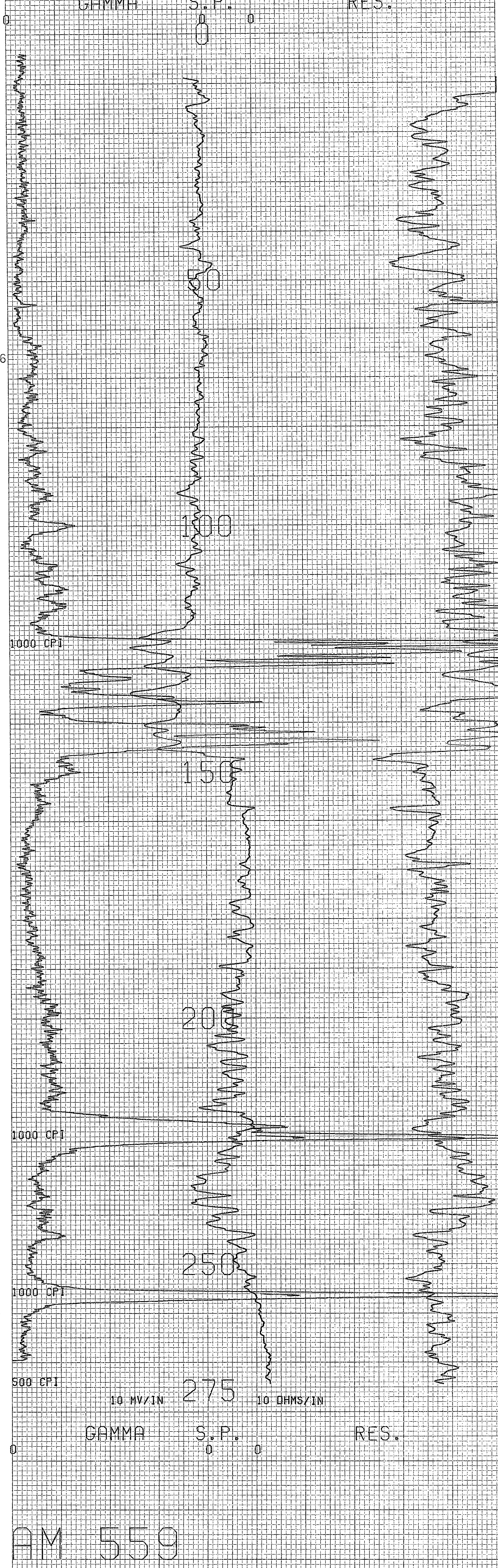
MINERALS EXPLORATION		DATE	3-17-78	SEC.	AM 559	TWP.	280	RANGE	51	IN.	10'
AREA		ANDERSON MINE		AREA	ANDERSON MINE		BIT SIZE	51			CASING
COUNTY		YAVAPAI		COUNTY	YAVAPAI		BORE HOLE FLUID	H ₂ O + MUD			VISCOSITY
STATE		ARIZONA		STATE	ARIZONA		DENSITY				
COMPANY		MINERALS EXPLOR.		COMPANY	MINERALS EXPLOR.		OPERATOR	M. DODGE			
DATE		3-17-78		DATE	3-17-78		UNIT NO.	7750			
SECTION		TOWNSHIP		RANGE	ARIZONA		TOTAL FOOTAGE LOGGED	275'			LOCATION
INITIAL RUN		GAMMA BEAMS		GAMMA BEAMS		GAMMA BEAMS		GAMMA BEAMS			WICKENS 686 AZ.
T.D. LOGGED		275'		SCALE	SCALE		SCALE	SCALE		STAND BY	TIME OUT
GAMMA SCALE		500 Cps. Per In.		T.C.	T.C.		T.C.	T.C.		LOGGING	TIME
LOGGING SPEED		60 Ft./Min.		FROM	FROM		FROM	FROM		0.75 Hrs.	2130
CALIBRATION & PROBE DATA		TO		TO	TO		TO	TO		1.0 Hrs.	
SOURCE NO.		SOURCE VALUE		TOTAL	TOTAL		TOTAL	TOTAL		CHARGEABLE	STANDBY
PROBE NO.		9055-23		PROBE SIZE	17/8		PROBE K-FACTOR	5.58 x 10 ⁻⁶		RES. SCALE	1.00
DETECTOR		NaI SCINT. XAL		TYPE & SIZE	7/8 x 4		WATER FACTOR	1.00		RES. SCALE	1.00
READ TIME		1.075 USEC		WATER FACTOR	1.00		RES. SCALE	1.00		RES. SCALE	1.00
WATER FACTOR		1.00		RES. SCALE	1.00		RES. SCALE	1.00		RES. SCALE	1.00
RES. SCALE		1.00		RES. SCALE	1.00		RES. SCALE	1.00		RES. SCALE	1.00
S.P.		10		S.P.	10		S.P.	10		S.P.	10

SELF POTENTIAL

DENSITY

NATURAL GAMMA RAY
COUNTS PER SECOND

RESISTANCE
OHMS



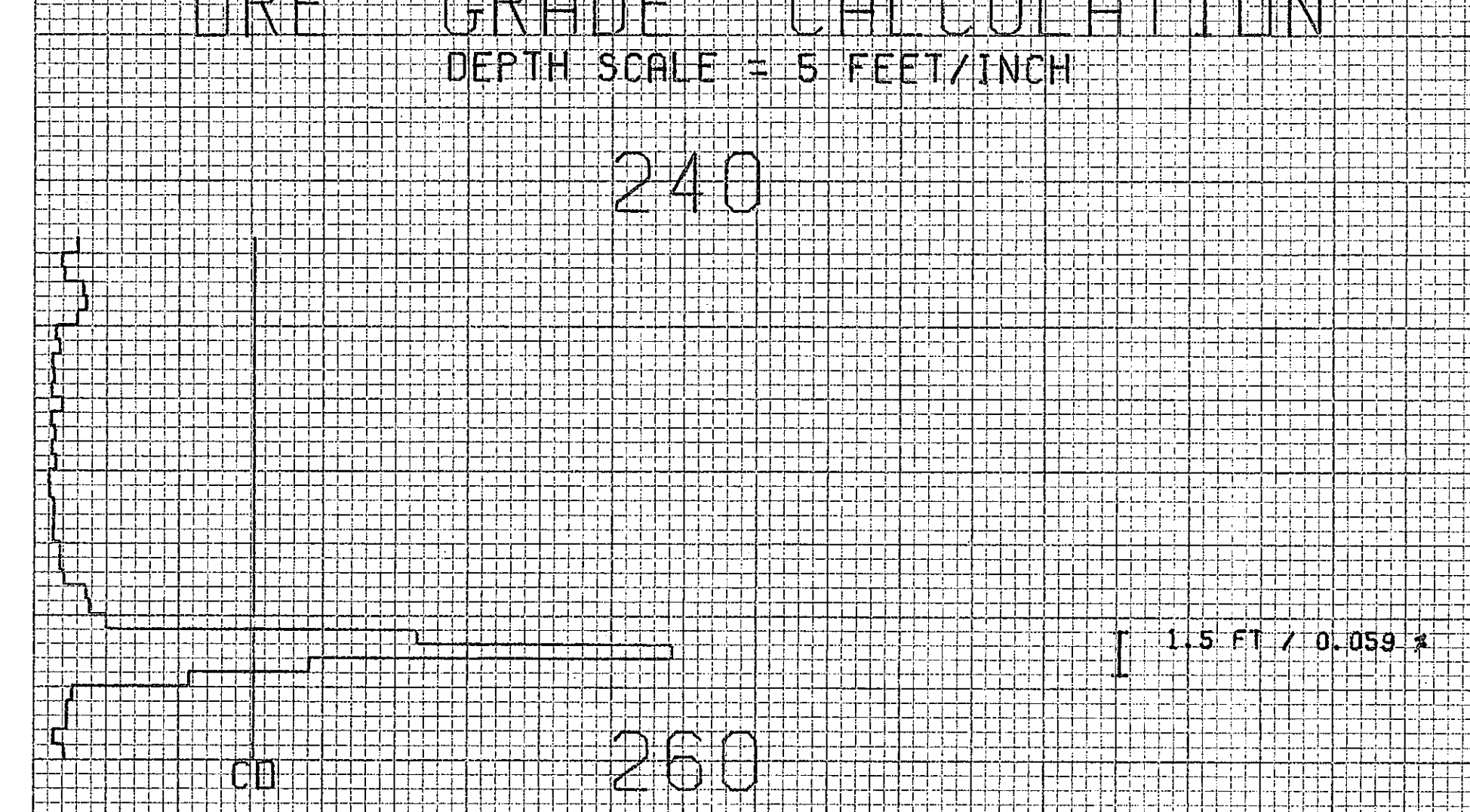
AM 559

MIKE DODGE

DRE GRADE CALCULATION

DEPTH SCALE = 5 FEET/INCH

240

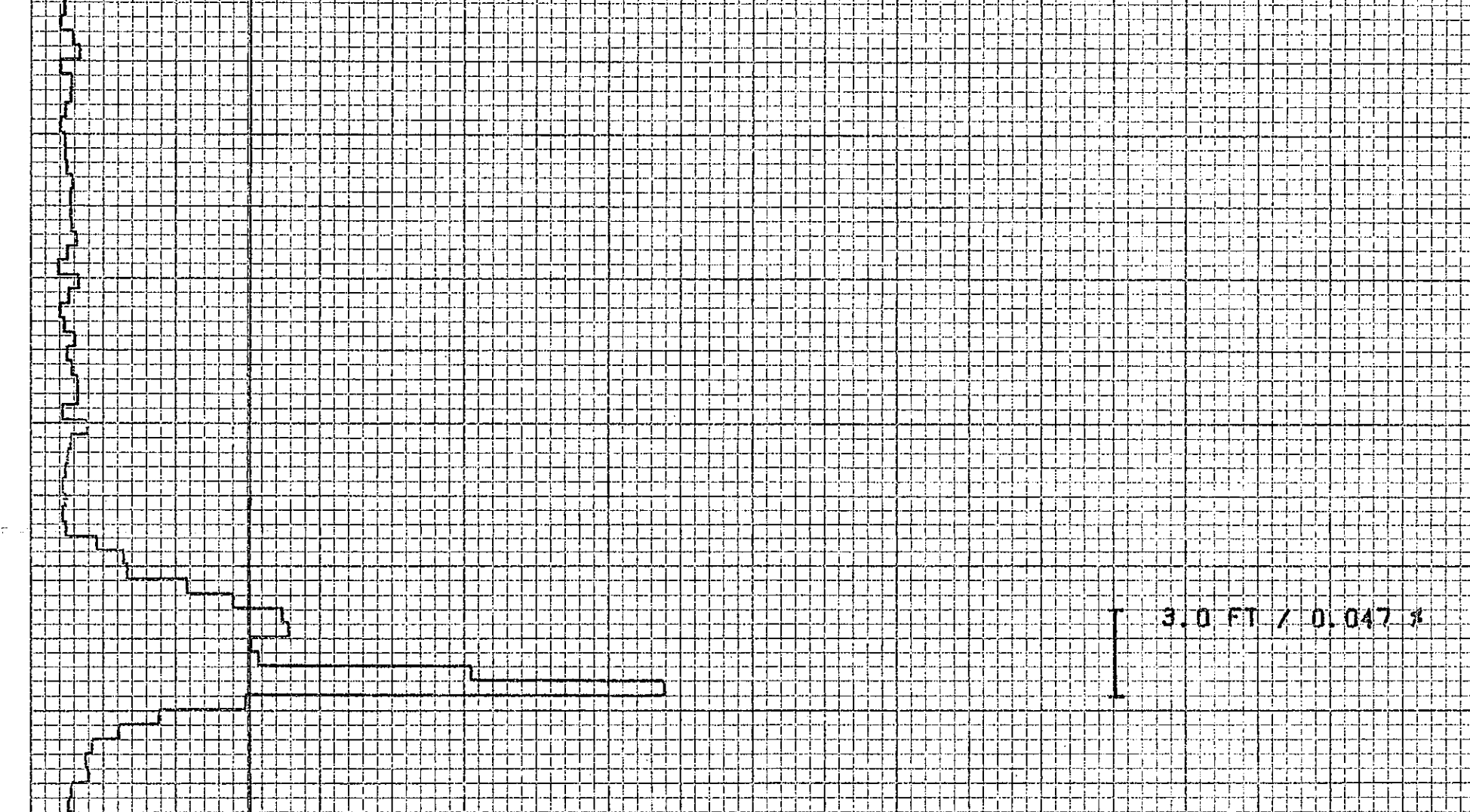


260

.02 % μ SD/INCH

CONVERGENCE FACTOR = 0.975

195

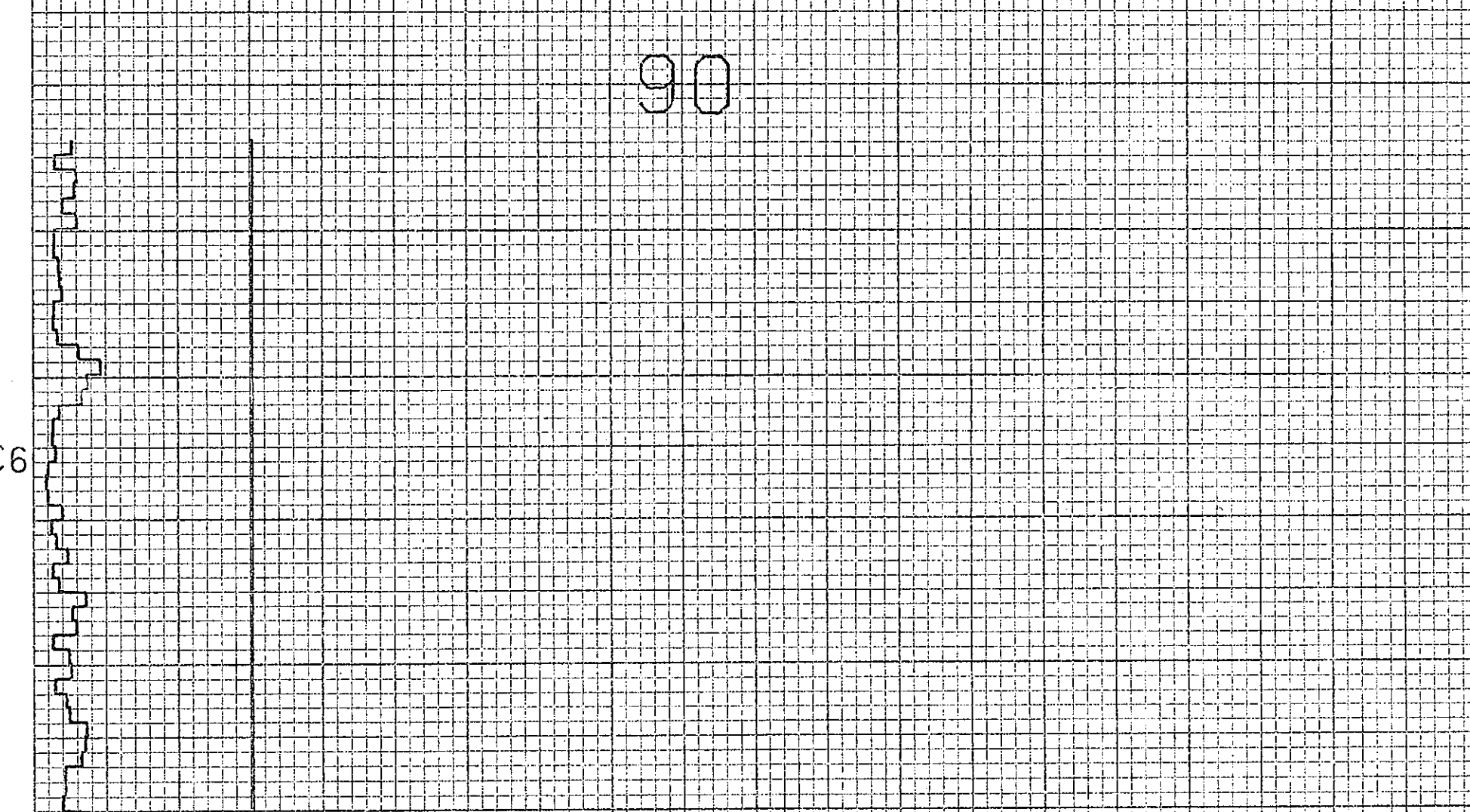


235

.02 % μ SD/INCH

CONVERGENCE FACTOR = 0.979

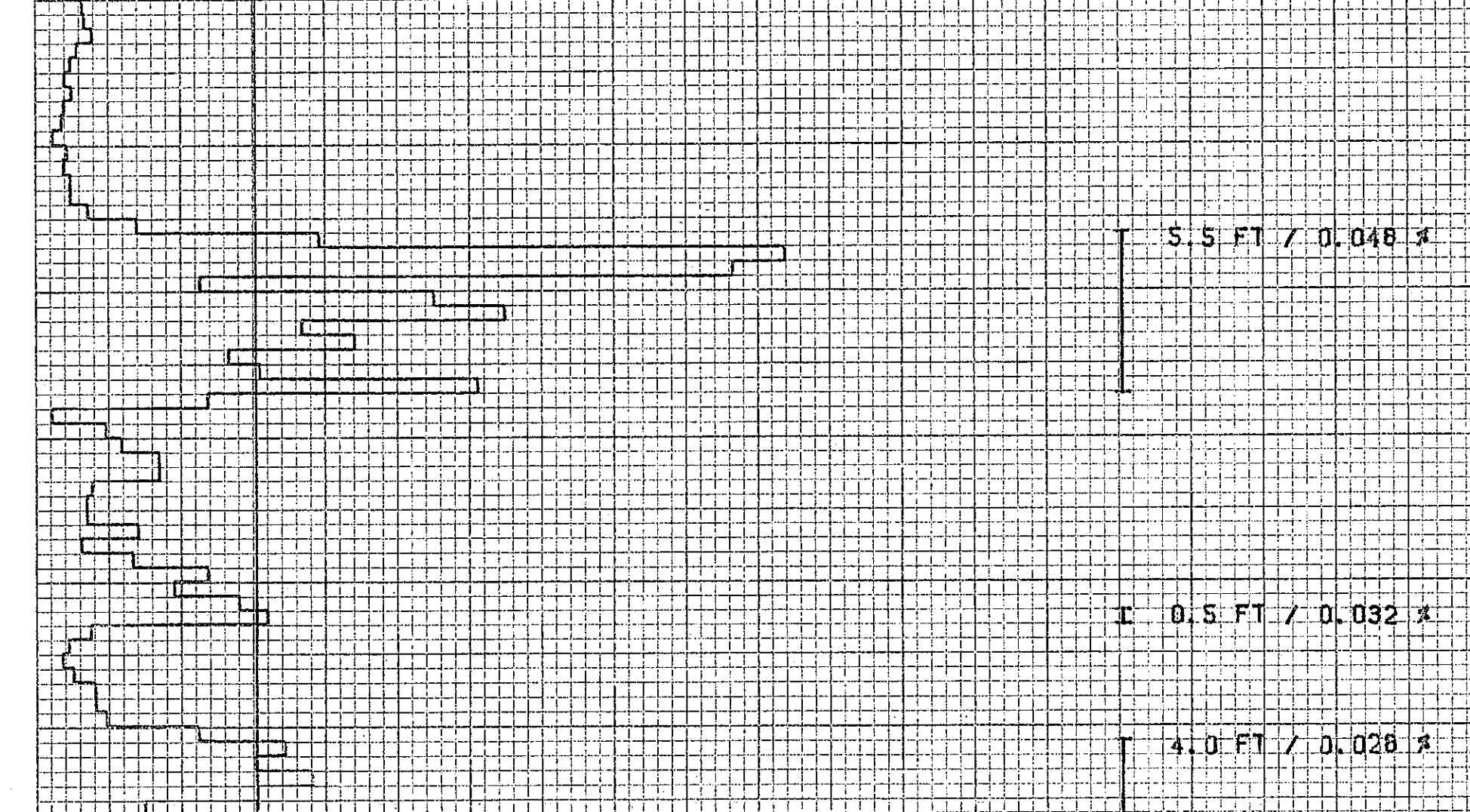
90



155

.02 % μ SD/INCH

CONVERGENCE FACTOR = 0.979



[illegible]

PROJECT ANDERSON MINE HOLE SIZE _____ ☐ AIR ☐ WATER HOLE NO. AM 552
ELEVATION _____ NORTH _____ EAST _____ LOGGED BY K. TAYLOR DATE 3/8/78
SECTION _____ TOWNSHIP _____ RANGE _____ T.D. 105 P.D. _____

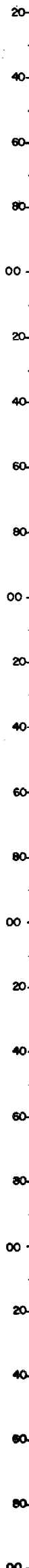
[illegible]

MINERALS EXPLORATION CO.

ASPEL WYTHING		HOLE NO. Am 552	
LOCATION	ANDERSON MINE	BARING SCALE	500.00 LPS
COUNTY	YAVAPAI STATE 42	PIPING TYPE	SLUENT
P.	BLV.	HEAD TIME	1.0000
		THRU CONSTANT	3.0000
C	TIME	PHONE DEL.	1/2 H
17M	2.8.38	CAULPER	-
17M DRILLER	103	DIRECTIONAL SURVEY	-
17M LOGGERS	52	TEMPERATURE	-
NOTED LOGGERS		OPERATOR	ERICKSON
OLD DIAMETER		DRILLER	A
WATER FACTOR		CONTRACTOR	LONGHORN
1567071	CHARGE/POW	LAST A.C. MT RUN	2.24.28
15.7 POTENTIAL	BLV. / IN.	FLUID LEVEL	
		REMARKS	
17M	1ST RUN	2ND RUN	3RD RUN
OTOM	63		
OP	75		
OTAT PIST	60		
CASE RUN	65		

T.D. 12 P.O. 123456789

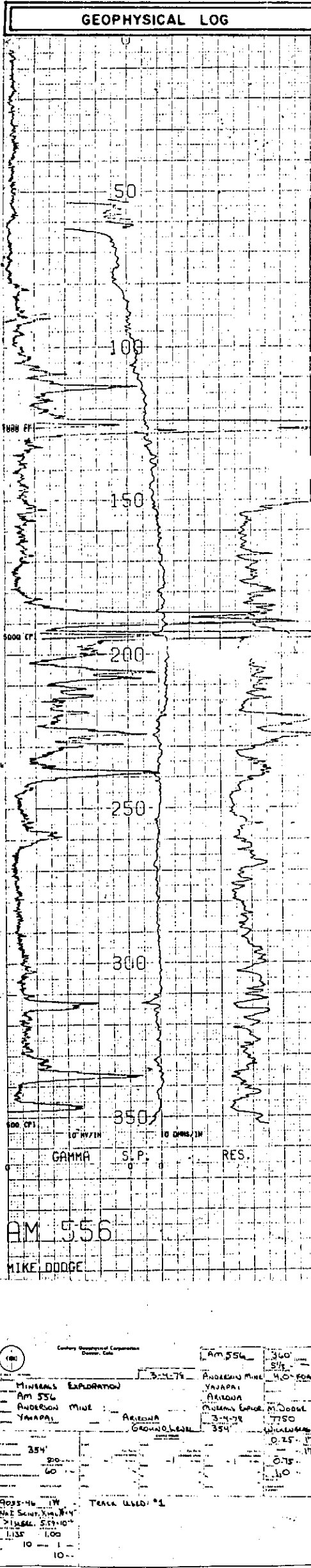
LITHOLOGY LOG



DRY

MINERALS EXPLORATION CO.				HOLE NO. AM-554	
COWEE, WISCONSIN					
LOCATION		ANDERSON MINE		DIAGRAM SCALE	
COUNTRY		YAVAPAI STATE AZ		FOOT TYPE	
QZ.		ELSV.		FACIES	
				START TIME	
				TIME CONSUMED	
				PROBE DIA.	
				CALIBER	
DATE		TIME		DIRECTIONAL SURVEY	
DUTCH CIRCLE		7-11-78		TEMPERATURE	
DEPTH LOGGED		75		CHARTS	
PROFILER LOGGED		75		DRILL	
HOLE CHARACTER		6		CONTRACTOR	
TESTER FACTOR		-		LAST A.T.C. PT. DOWN	
425 VELOCITY		-		FLUID LEVEL	
30' POSITIONAL		STANDARD		PUSHING	
		REV. MIN		REV. MIN	
REV. MIN		65		REV. MIN	
BOTTOM		45		REV. MIN	
TOP		20		REV. MIN	
TOTAL FEET		20		REV. MIN	
SCALE INCH		20		REV. MIN	

SECTION _____ TOWNSHIP _____ RANGE _____ T.D. 100 P.D. _____

GEOPHYSICAL LOG		DEPTH	P	C	A	STRIP LOG	LITHOLOGY LOG
							red brown silt sand, gravel
		20					olive green to brownish green mudstone, white calcareous marlstone zones, minor siliceous zones
		40					
		60					
		80					
		100					siliceous zone, hard green frogs
		120					siliceous zone
		140					
		160					siliceous zone
		180					
		200					lignite carbonaceous zone, grey, grey green, black, mudstones, lignite zones
		220					
		240					lignite frags.
		260					
		280					yellow brown silt, med-coarse sand
		300					
		320					
		340					
		360					red brown, med-coarse sand
							blue grey mudstone, med-coarse sand
							brown med-coarse sand
							red mudstone, abundant oolite frags, sand

PROJECT ANDERSON MINE

☐ AIR ☐ WATER

HOLE NO. AM 557

NORTH

LOGGED BY K. TAYLOR

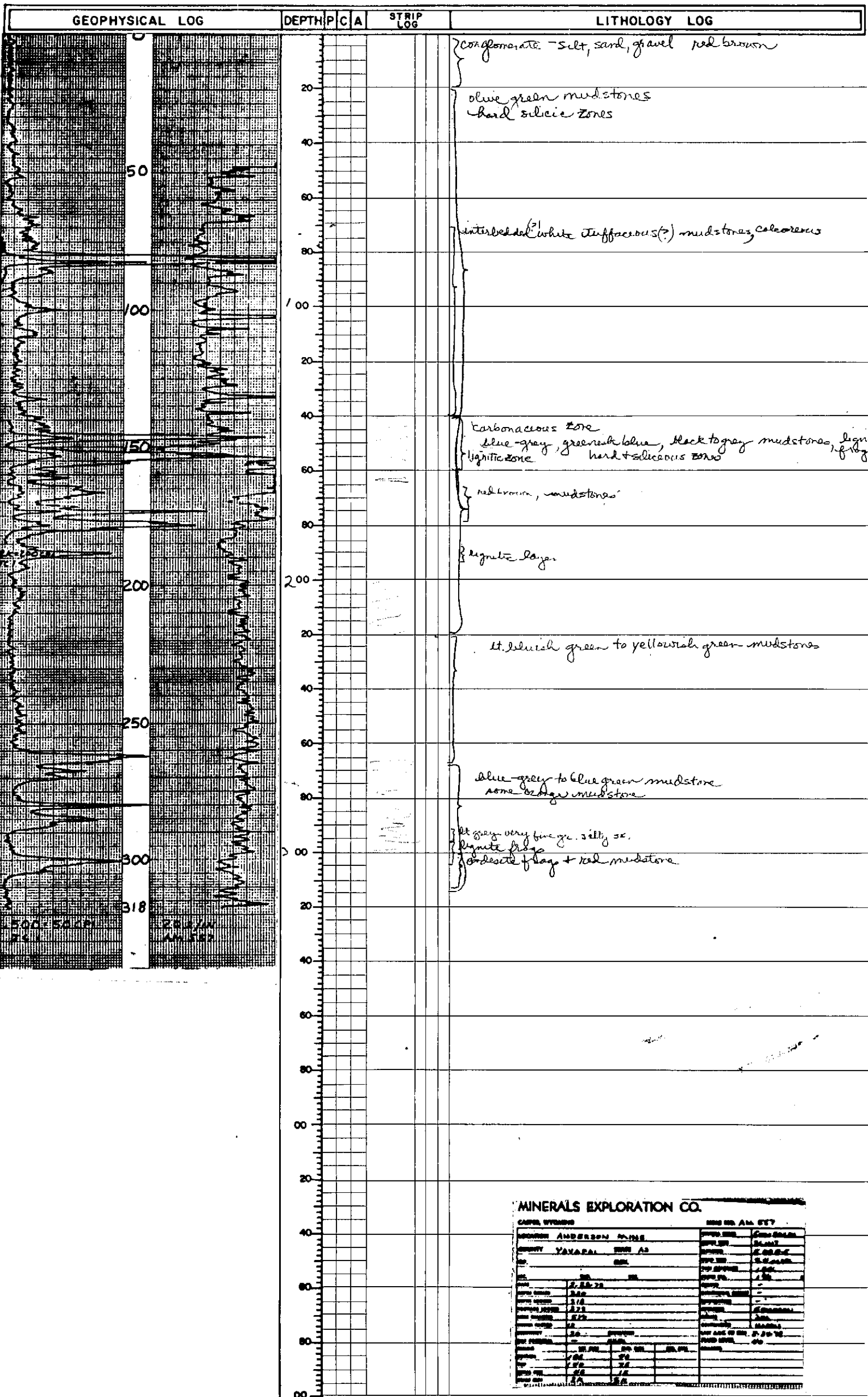
DATE 2/28/18

TOWNSHIP

RANGE

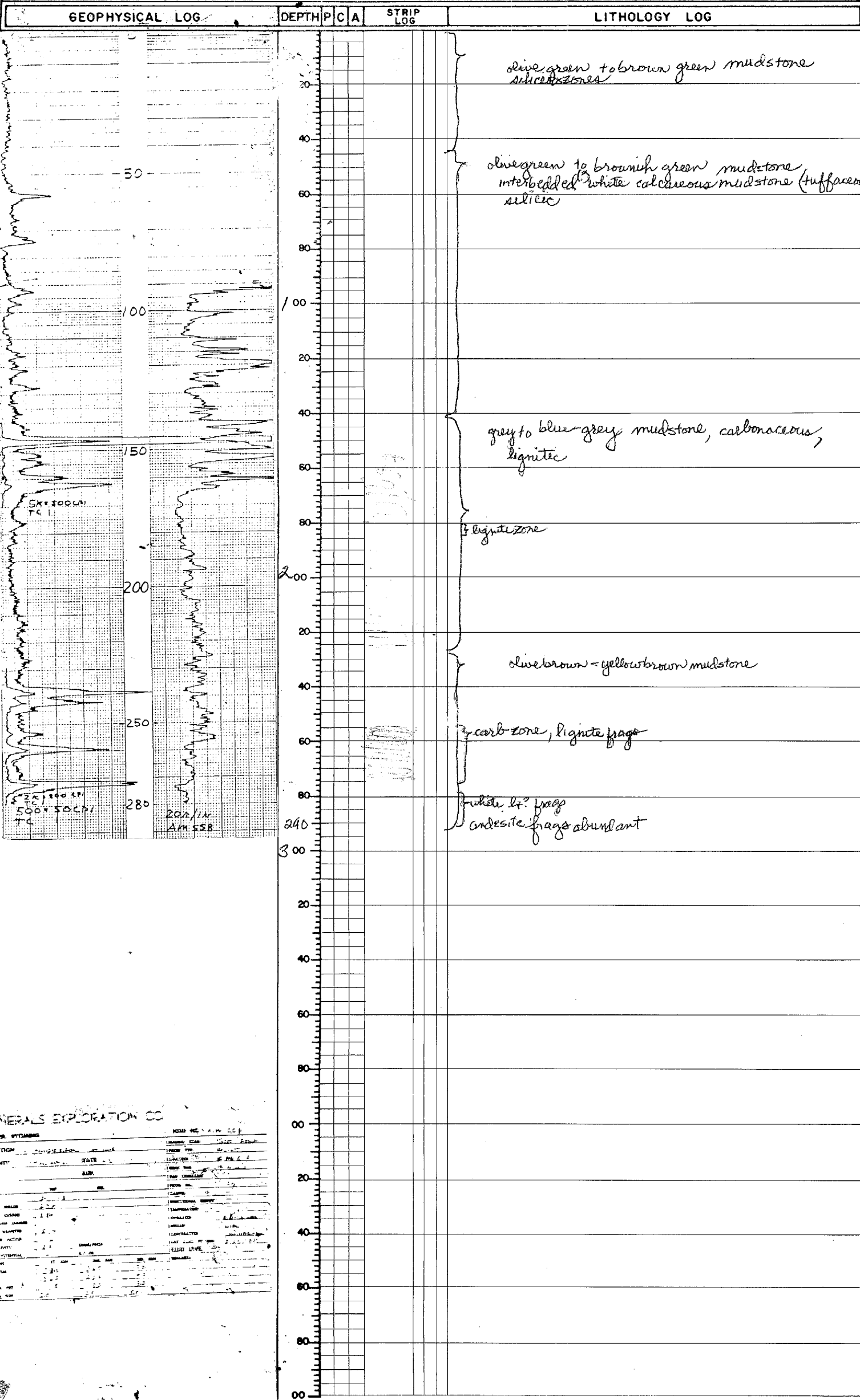
T.D. 3/5

P.D.



MINERALS EXPLORATION CO.

[illegible]



MINERALS EXPLORATION CO.

LOG NO. AM 558

LOCATION Anderson Mine

DATE 3/1/78

LOGGED BY K TAYLOR

SECTION _____

TOWNSHIP _____

RANGE _____

DEPTH 290'

DIAMETER 5"

LOG TYPE _____

LOG SCALE _____

LOG INTERVAL _____

LOG START _____

LOG END _____

LOG TOTAL _____

LOG AVERAGE _____

LOG STANDARD _____

LOG VARIATION _____

LOG CORRECTION _____

LOG COMMENTS _____

ADDRESS REQUESTING AGENCIES FBI - LA		AM 559	
3-17-78		ANDERSON, Muel YUWAPAI ARIZONA MUSEUMS, PAPER 3-17-78 2715	
3-17-78		380 51 - 10 H - 10 H - 10 M. DAVIS 7150 WICKESMAN, AL 9 - 25 - 77 2715 2130 075 - 10 -	
2715 90 - 60		TRACK LOST: 04 DASH 5-10000 FROM L.R.D.A. PITS 3-10-78: 5-10000 RIG - VERM	
23 7 15 10		1000 1000 1000	
SELF POSITIONAL 10 - 01 NORTHERN GAMMA RAY NUCLEAR WASTE TESTING		DENSITY RESISTANCE 01000	

PROJECT _____ HOLE SIZE 6.5 ☒ AIR ☐ WATER HOLE NO. AM 360
ELEVATION _____ NORTH _____ EAST _____ LOGGED BY LUENT DATE 17 MAR 78
SECTION _____ TOWNSHIP _____ RANGE _____ T.D. 250 P.D. _____

ELEVATION

NORTH

EAST

LOGGED BY

HOLE NO

AM 560

SECTION

TOWNSHIP

RANGE

T.D.

P.D.

T.D. ²⁵⁰ P.D.
CENTURY - VENTURE

[illegible][illegible]