



CONTACT INFORMATION  
Mining Records Curator  
Arizona Geological Survey  
3550 N. Central Ave, 2nd floor  
Phoenix, AZ, 85012  
602-771-1601  
<http://www.azgs.az.gov>  
[inquiries@azgs.az.gov](mailto:inquiries@azgs.az.gov)

The following file is part of the Anderson Mine Collection

#### **ACCESS STATEMENT**

These digitized collections are accessible for purposes of education and research. We have indicated what we know about copyright and rights of privacy, publicity, or trademark. Due to the nature of archival collections, we are not always able to identify this information. We are eager to hear from any rights owners, so that we may obtain accurate information. Upon request, we will remove material from public view while we address a rights issue.

#### **CONSTRAINTS STATEMENT**

The Arizona Geological Survey does not claim to control all rights for all materials in its collection. These rights include, but are not limited to: copyright, privacy rights, and cultural protection rights. The User hereby assumes all responsibility for obtaining any rights to use the material in excess of "fair use."

The Survey makes no intellectual property claims to the products created by individual authors in the manuscript collections, except when the author deeded those rights to the Survey or when those authors were employed by the State of Arizona and created intellectual products as a function of their official duties. The Survey does maintain property rights to the physical and digital representations of the works.

#### **QUALITY STATEMENT**

The Arizona Geological Survey is not responsible for the accuracy of the records, information, or opinions that may be contained in the files. The Survey collects, catalogs, and archives data on mineral properties regardless of its views of the veracity or accuracy of those data.

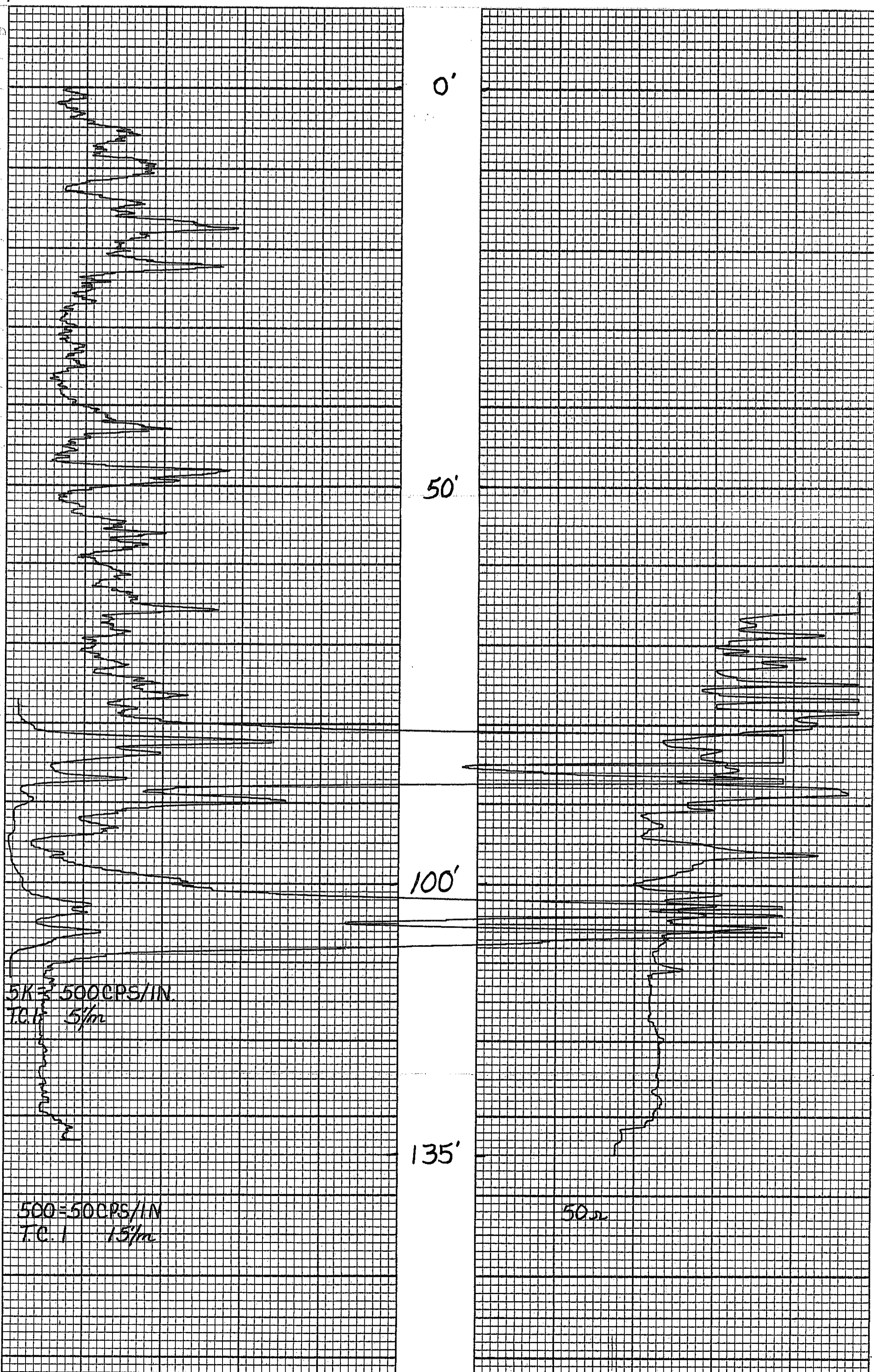
# MINERALS EXPLORATION CO.

CASPER, WYOMING

1206403.01N  
87 953.78E

HOLE NO. AM-121

LOCATION ANDERSON MINE		GAMMA SCALE	500 = 500 CPS/IN.
COUNTY Navajo	STATE ARIZONA	PROBE TYPE	Scint.
GP. <del>1206403.01N</del> 641.598E	ELEV. 1796'	K-FACTOR	2.25 <sup>10-5</sup>
SEC.	TWP. 11N	DEAD TIME	9.6 $\mu$ sec.
	RGE. 10W	TIME CONSTANT	1
DATE	Dec. 22, 1975	PROBE DIA.	1 1/8"
DEPTH DRILLED	135'	CALIPER	
DEPTH LOGGED	135'	DIRECTIONAL SURVEY	
FOOTAGE LOGGED	170'	TEMPERATURE	
HOLE DIAMETER	5 1/8" To 135'	OPERATOR	Hudson
WATER FACTOR	1.157	DRILLER	STARNER
RESISTIVITY	10 OHMS/INCH	CONTRACTOR	REID
SELF POTENTIAL	M.V./IN.	LAST A.E.C. PIT RUN	Aug. 2, 1975
RERUNS	1ST. RUN	2ND. RUN	3RD. RUN
BOTTOM	112'	REMARKS:	
TOP	77'	FLUID LEVEL 66'	
TOTAL FEET	35'		
SCALE RUN	5K = 500 CPS/IN.		



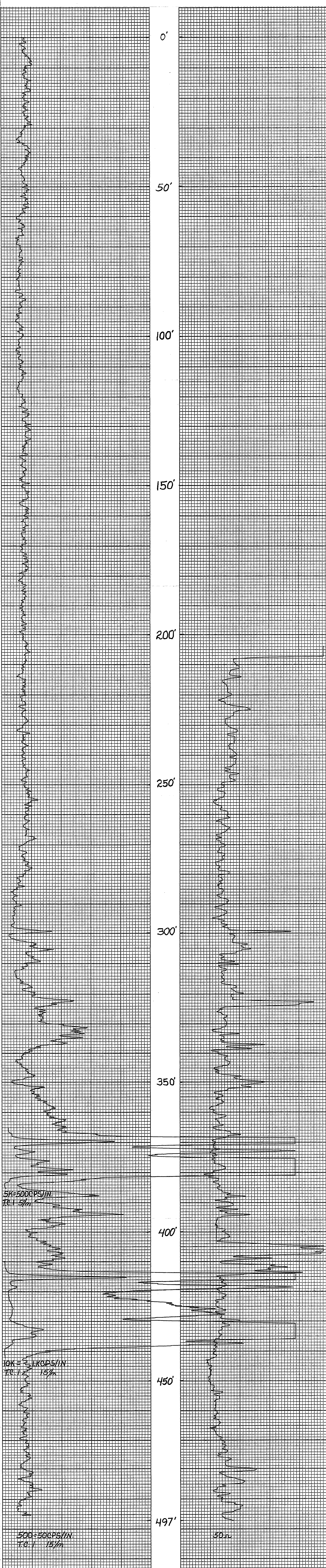
# MINERALS EXPLORATION CO.

1205 210.77N  
87 51.28E

CASPER, WYOMING

HOLE NO. *AM-122*

LOCATION <i>ANDERSON MINE</i>			GAMMA SCALE	<i>500=50CPS/IN.</i>
COUNTY <i>Navajo</i> STATE <i>ARIZONA</i>			PROBE TYPE	<i>Scint.</i>
GP. <i>1,202,806N</i> <i>641,177E</i>			K-FACTOR	<i>2.25<sup>10-5</sup></i>
ELEV. <i>1924'</i>			DEAD TIME	<i>9.6 μsec.</i>
SEC.	TWP. <i>11N</i>	RGE. <i>10W</i>	TIME CONSTANT	<i>1</i>
DATE	<i>Dec. 22, 1975</i>		PROBE DIA.	<i>1 1/8"</i>
DEPTH DRILLED	<i>500'</i>		CALIPER	
DEPTH LOGGED	<i>497'</i>		DIRECTIONAL SURVEY	
FOOTAGE LOGGED	<i>549'</i>		TEMPERATURE	
HOLE DIAMETER	<i>5 1/8" to 500'</i>		OPERATOR	<i>Hudson</i>
WATER FACTOR	<i>1.157</i>		DRILLER	<i>Starnes</i>
RESISTIVITY	<i>10 OHMS/INCH</i>		CONTRACTOR	<i>REID</i>
SELF POTENTIAL	<i>M.V./IN.</i>		LAST A.E.C. PIT RUN	<i>Aug. 2, 1975</i>
RERUNS	1ST. RUN	2ND. RUN	3RD. RUN	FLUID LEVEL <i>208'</i>
BOTTOM	<i>442'</i>	<i>385'</i>		REMARKS:
TOP	<i>410'</i>	<i>365'</i>		
TOTAL FEET	<i>32'</i>	<i>20'</i>		
SCALE RUN	<i>10K = 1KCPS/IN.</i>	<i>5K = 50CPS/IN.</i>		



# MINERALS EXPLORATION CO.

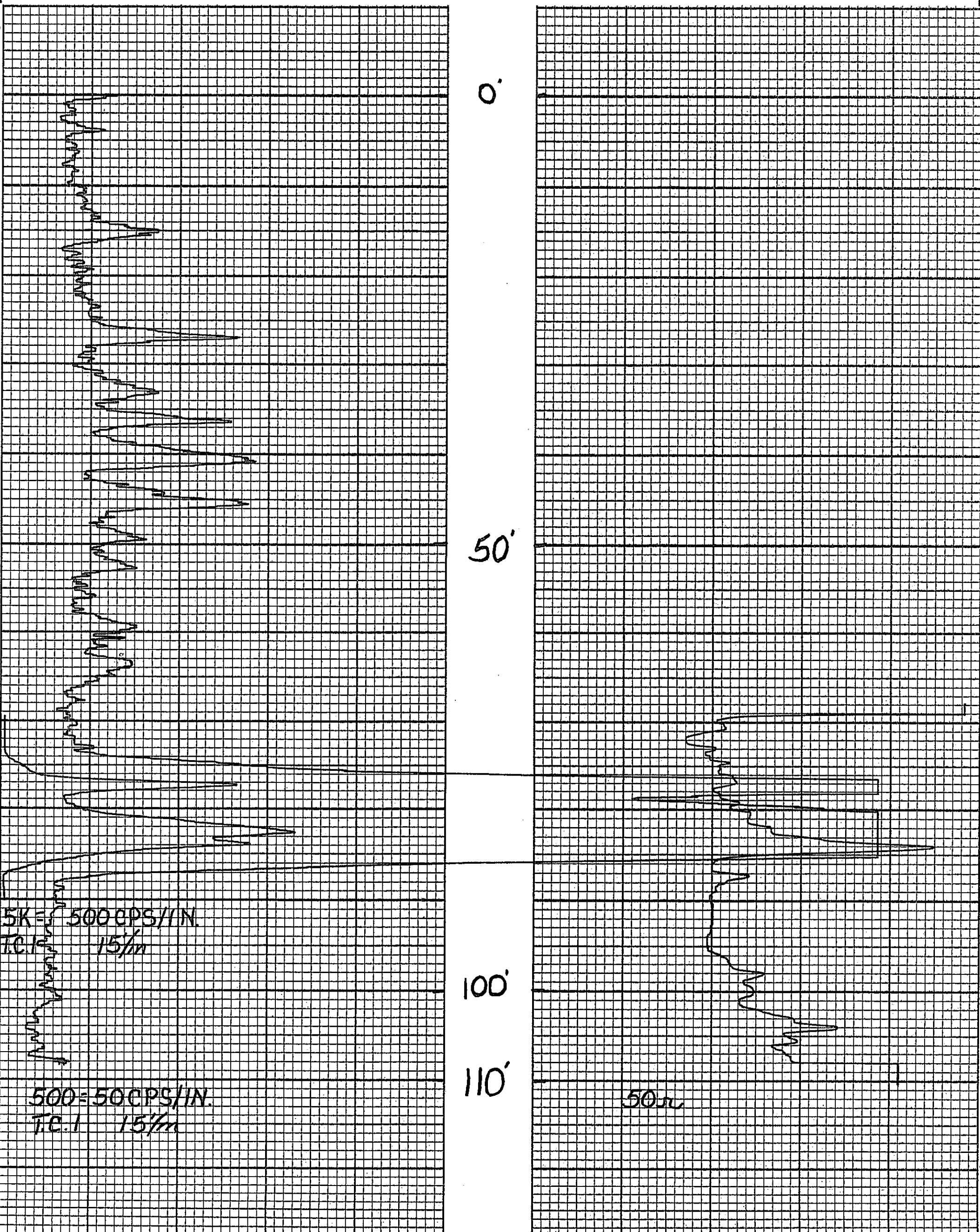
1207 189.54N

CASPER, WYOMING

88 376.98E

HOLE NO. AM-123

LOCATION ANDERSON MINE			GAMMA SCALE	500=500PS/IN.
COUNTY Yavapai STATE ARIZONA			PROBE TYPE	ScINT.
GP. <del>1,204,800N</del> 642,007E			K-FACTOR	$2.25 \cdot 10^{-5}$
ELEV. 1868'			DEAD TIME	9.6 $\mu$ sec.
SEC. TWP. 11N RGE. 10W			TIME CONSTANT	1
DATE	Dec. 22, 1975		PROBE DIA.	1 1/4"
DEPTH DRILLED	115'		CALIPER	
DEPTH LOGGED	110'		DIRECTIONAL SURVEY	
FOOTAGE LOGGED	130'		TEMPERATURE	
HOLE DIAMETER	5 1/2" To 115'		OPERATOR	Hudson
WATER FACTOR	1.172		DRILLER	Roberts
RESISTIVITY	10 OHMS/INCH		CONTRACTOR	REID
SELF POTENTIAL	M.V./IN.		LAST A.E.C. PIT RUN	Aug. 2, 1975
RERUNS	1ST. RUN	2ND. RUN	3RD. RUN	REMARKS:
BOTTOM	90'			
TOP	70'			
TOTAL FEET	20'			
SCALE RUN	5K=500CPS/IN.			



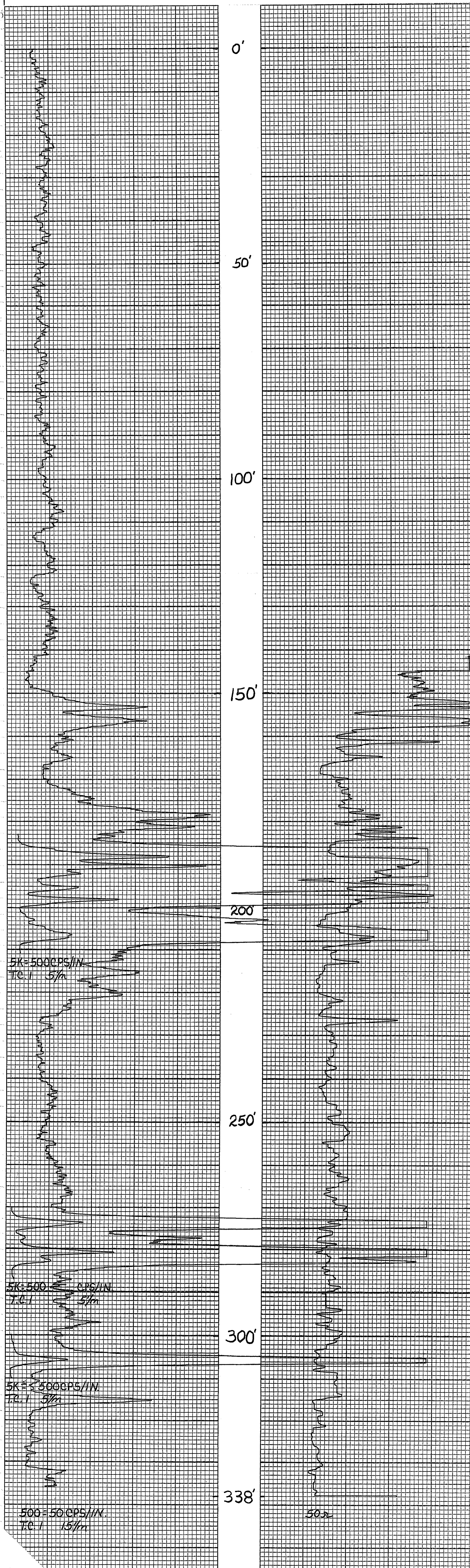
# MINERALS EXPLORATION CO.

1205 579.38N  
88 816.11E

CASPER, WYOMING

HOLE NO. AM-124

LOCATION <i>ANDERSON MINE</i>			GAMMA SCALE	500=50CPS/IN.
COUNTY <i>Navajo</i> STATE <i>ARIZONA</i>			PROBE TYPE	ScINT.
GP. <i>T.203198N</i>			K-FACTOR	$2.25 \times 10^{-5}$
<i>642,475E</i> ELEV. <i>1863'</i>			DEAD TIME	9.6 $\mu$ Sec.
SEC.	TWP. <i>11N</i>	RGE. <i>10W</i>	TIME CONSTANT	1
DATE	<i>Dec. 22, 1975</i>		PROBE DIA.	1 1/8"
DEPTH DRILLED	<i>340'</i>		CALIPER	
DEPTH LOGGED	<i>338'</i>		DIRECTIONAL SURVEY	
FOOTAGE LOGGED	<i>393'</i>		TEMPERATURE	
HOLE DIAMETER	<i>5 3/8" to 340'</i>		OPERATOR	<i>Hudson</i>
WATER FACTOR	<i>1.177</i>		DRILLER	<i>Sharpe</i>
RESISTIVITY	<i>10 OHMS/INCH</i>		CONTRACTOR	<i>REID</i>
SELF POTENTIAL	<i>M.V./IN.</i>		LAST A.E.C. PIT RUN	<i>Aug. 2, 1975</i>
RERUNS	1ST. RUN	2ND. RUN	3RD. RUN	REMARKS:
BOTTOM	<i>310'</i>	<i>287'</i>	<i>211'</i>	
TOP	<i>300'</i>	<i>270'</i>	<i>183'</i>	
TOTAL FEET	<i>10'</i>	<i>17'</i>	<i>28'</i>	
SCALE RUN	<i>5K=500CPS/IN. 5K=500CPS/IN. 5K=500CPS/IN</i>			



# MINERALS EXPLORATION CO.

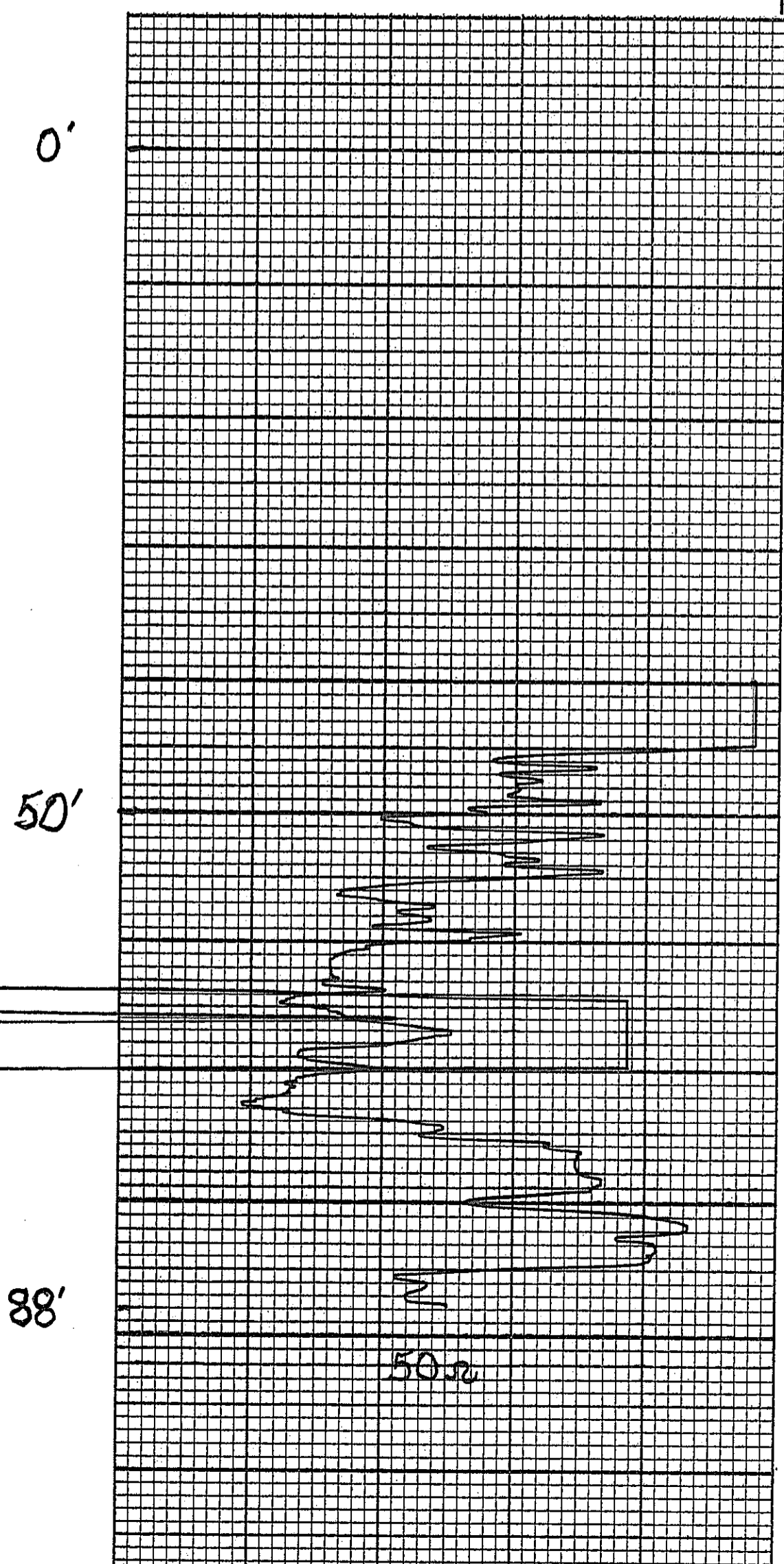
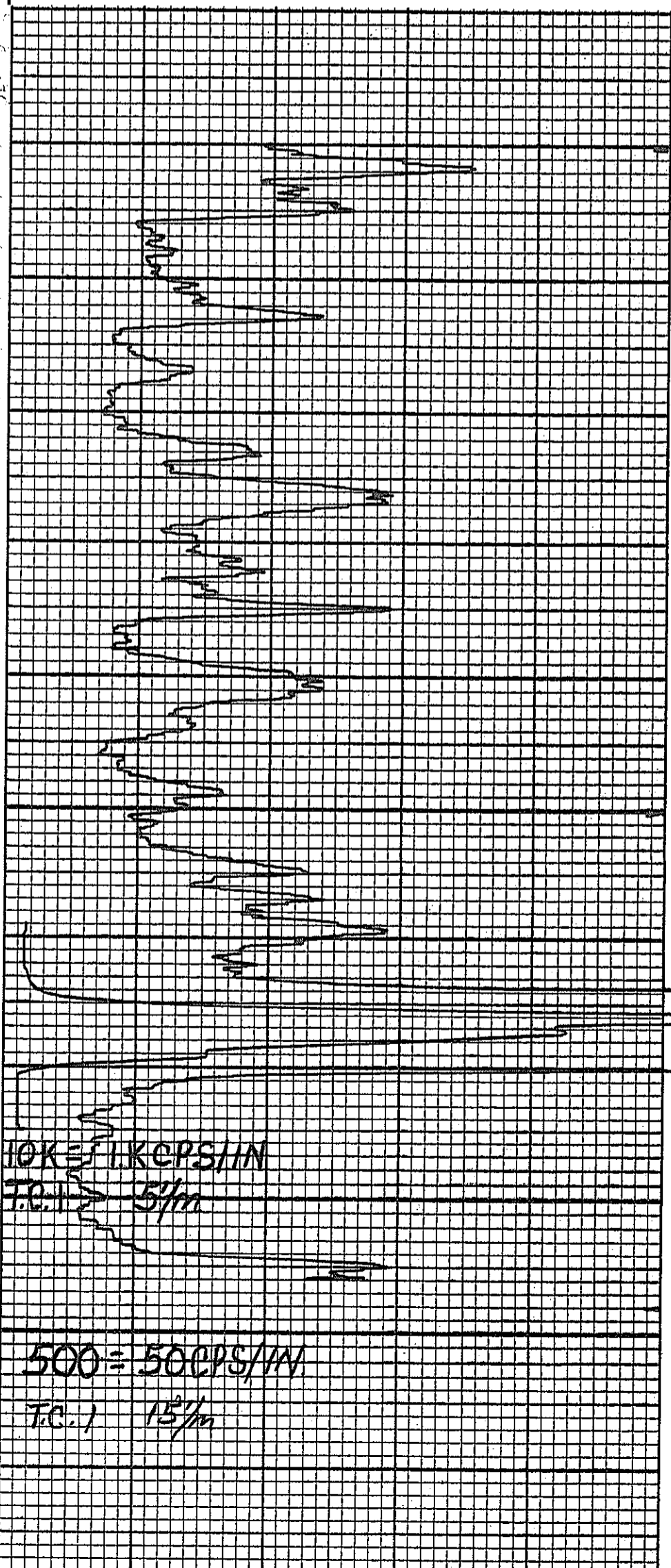
1206790.52N

88763.87E

CASPER, WYOMING

HOLE NO. *AM-125*

LOCATION <i>ANDERSON MINE</i>			GAMMA SCALE	<i>500 CPS=50CPS/IN.</i>
COUNTY <i>YAVAPAI</i>	STATE <i>ARIZONA</i>		PROBE TYPE	<i>SCINT.</i>
GP. <i>1,204,468N</i> <i>642,401E</i>	ELEV. <i>1809'</i>		K-FACTOR	<i>2.25<sup>10-5</sup></i>
SEC.	TWP. <i>11N</i>	RGE. <i>10W</i>	DEAD TIME	<i>9.6 μsec.</i>
DATE	<i>Dec. 22, 1975</i>		TIME CONSTANT	<i>1</i>
DEPTH DRILLED	<i>90'</i>		PROBE DIA.	<i>1 1/16"</i>
DEPTH LOGGED	<i>88'</i>		CALIPER	
FOOTAGE LOGGED	<i>103'</i>		DIRECTIONAL SURVEY	
HOLE DIAMETER	<i>5 1/2" to 90'</i>		TEMPERATURE	
WATER FACTOR	<i>1.172</i>		OPERATOR	<i>Hudson</i>
RESISTIVITY	<i>10 OHMS/INCH</i>		DRILLER	<i>Roberts</i>
SELF POTENTIAL	<i>M.V./IN.</i>		CONTRACTOR	<i>REID</i>
RERUNS	1ST. RUN	2ND. RUN	3RD. RUN	LAST A.E.C. PIT RUN <i>Aug. 2, 1975</i>
BOTTOM	<i>75'</i>			FLUID LEVEL <i>45'</i>
TOP	<i>60'</i>			REMARKS:
TOTAL FEET	<i>15'</i>			
SCALE RUN	<i>10K=1.KCPS/IN.</i>			



RECORDING CHARTS GRAPHIC CONTENTS CORPORATION

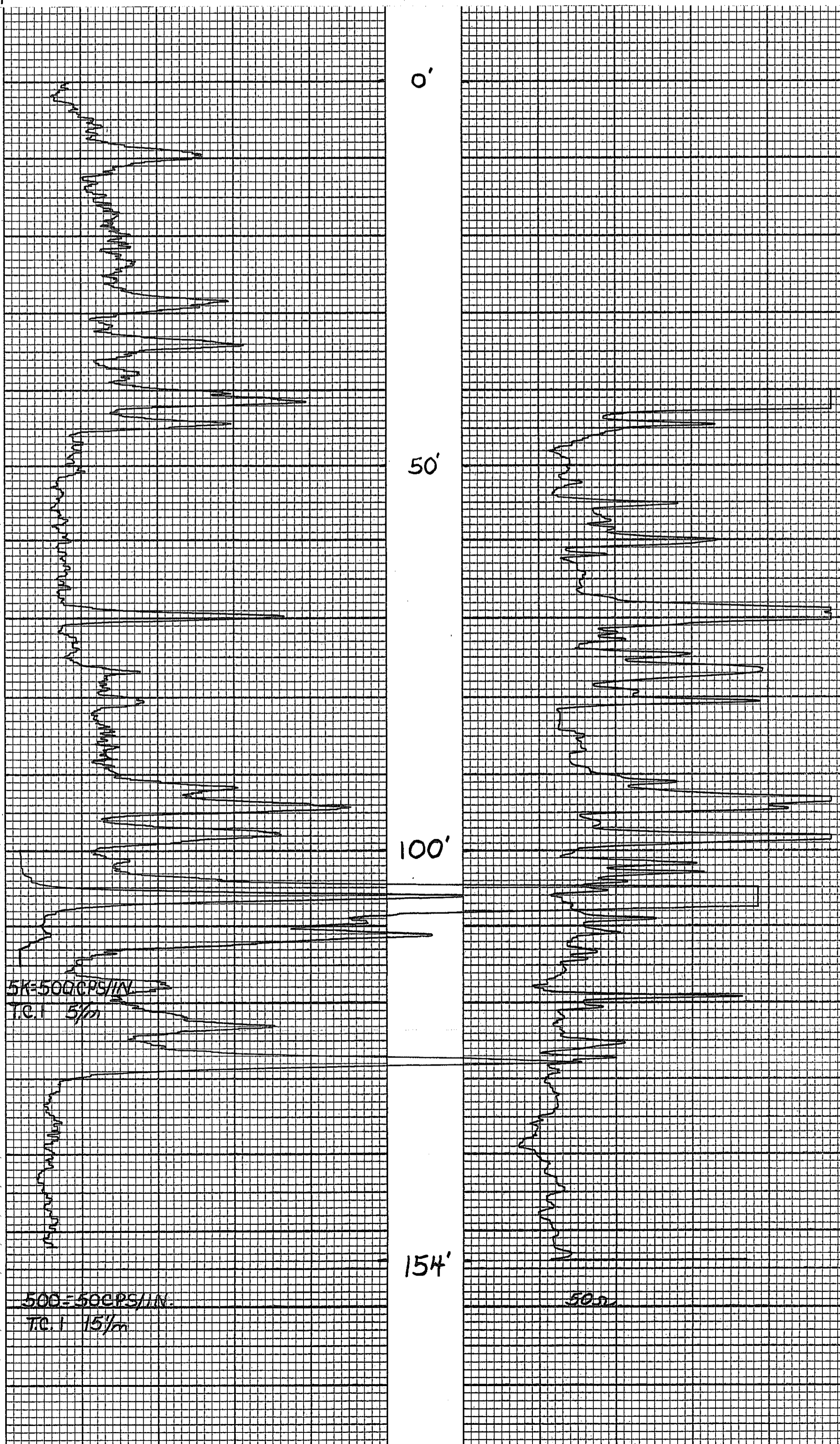
# MINERALS EXPLORATION CO.

1206407.10N  
87559.79E

CASPER, WYOMING

HOLE NO. AM-126

LOCATION		ANDERSON MINE		GAMMA SCALE	500=500CPS/IN.
COUNTY		Yavapai STATE ARIZONA		PROBE TYPE	SciNT.
GP. 1,204,003N 641,204E		ELEV. 1792'		K-FACTOR	2.25 <sup>10-5</sup>
SEC.		TWP. 11N	RGE. 10W	DEAD TIME	9.6 μ sec.
DATE	Dec. 22, 1975			TIME CONSTANT	1
DEPTH DRILLED	155'			PROBE DIA.	1 1/8"
DEPTH LOGGED	154'			CALIPER	
FOOTAGE LOGGED	169'			DIRECTIONAL SURVEY	
HOLE DIAMETER	5 1/2" To 155'			TEMPERATURE	
WATER FACTOR	1.157			OPERATOR	Hudson
RESISTIVITY	10 OHMS/INCH			DRILLER	STARNER
SELF POTENTIAL	M.V./IN.			CONTRACTOR	REID
RERUNS	1ST. RUN	2ND. RUN	3RD. RUN	LAST A.E.C. PIT RUN	Aug. 2, 1975
BOTTOM	115			FLUID LEVEL	42'
TOP	100'			REMARKS:	
TOTAL FEET	15'				
SCALE RUN	5K=500CPS/IN.				



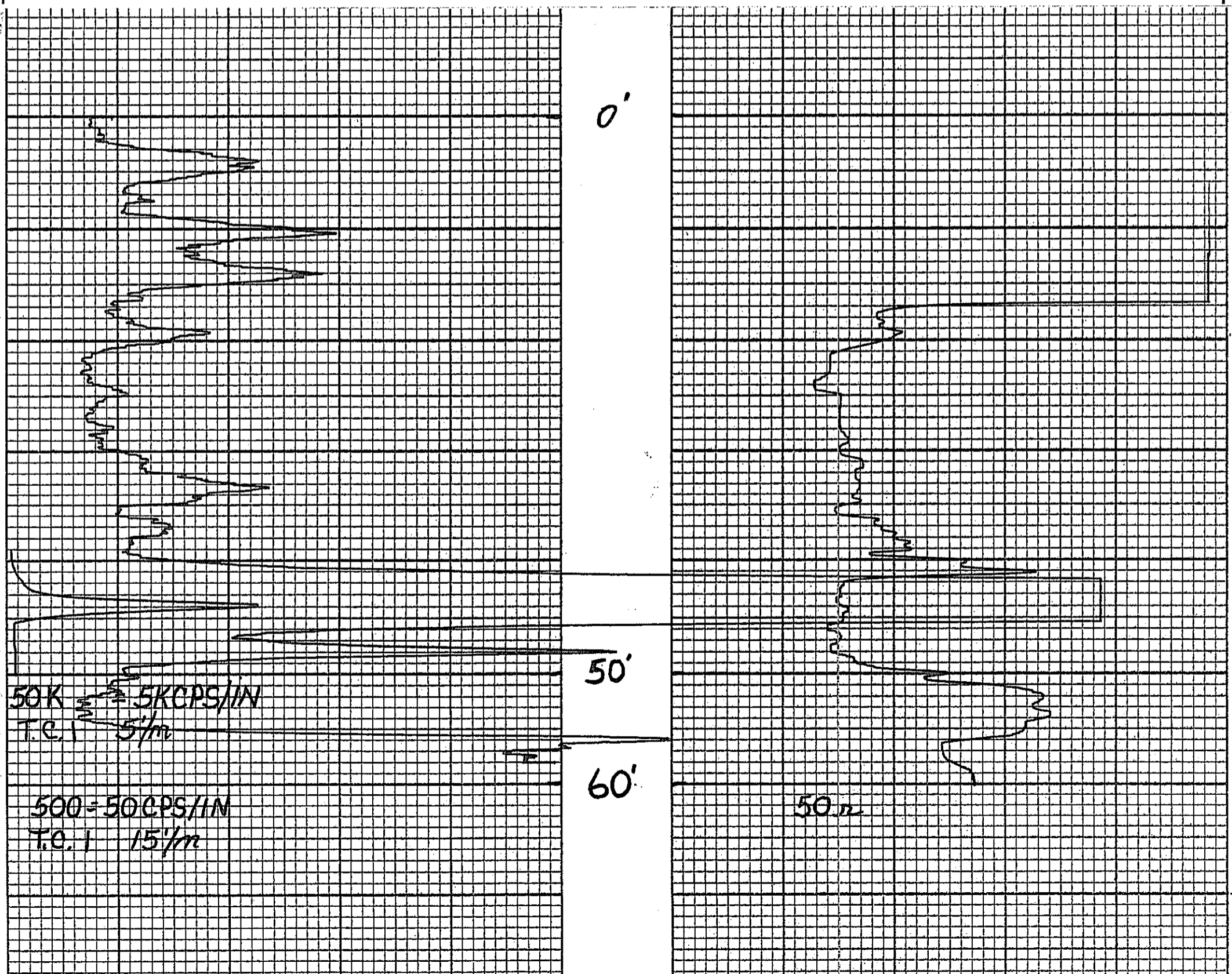
# MINERALS EXPLORATION CO.

1207190.25N

88 782.06E HOLE NO. AM-127

CASPER, WYOMING

LOCATION <i>ANDERSON MINE</i>			GAMMA SCALE	<i>500 = 50 CPS/IN.</i>
COUNTY <i>Navajo</i> STATE <i>ARIZONA</i>			PROBE TYPE	<i>Scint.</i>
GP. <i>1,204,808N</i> <i>642,412E</i>			K-FACTOR	<i>2.25<sup>10-5</sup></i>
ELEV. <i>1867'</i>			DEAD TIME	<i>9.6 usec.</i>
SEC. TWP. <i>11N</i> RGE. <i>10W</i>			TIME CONSTANT	<i>1</i>
DATE	<i>Dec. 22, 1975</i>		PROBE DIA.	<i>1 1/8"</i>
DEPTH DRILLED	<i>60'</i>		CALIPER	
DEPTH LOGGED	<i>60'</i>		DIRECTIONAL SURVEY	
FOOTAGE LOGGED	<i>70'</i>		TEMPERATURE	
HOLE DIAMETER	<i>5 1/2" To 60'</i>		OPERATOR	<i>Hudson</i>
WATER FACTOR	<i>1.172</i>		DRILLER	<i>Roberts</i>
RESISTIVITY	<i>10 OHMS/INCH</i>		CONTRACTOR	<i>REID</i>
SELF POTENTIAL	<i>M.V./IN.</i>		LAST A.E.C. PIT RUN	<i>Aug. 2, 1975</i>
RERUNS	1ST. RUN	2ND. RUN	3RD. RUN	REMARKS:
BOTTOM	<i>50'</i>			
TOP	<i>40'</i>			
TOTAL FEET	<i>10'</i>			
SCALE RUN	<i>50K = 5K CPS/IN.</i>			





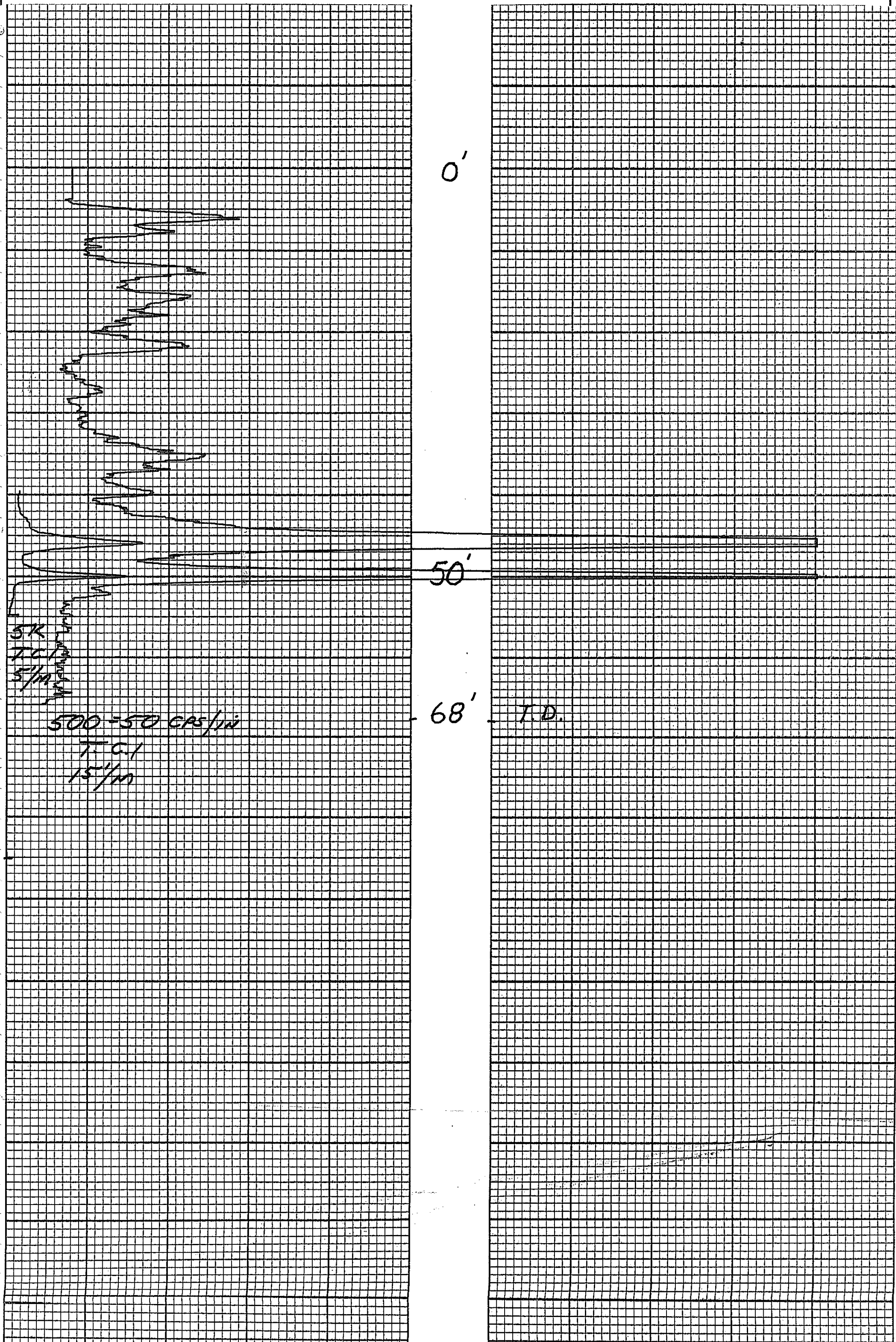
# MINERALS EXPLORATION CO.

1207186.31N  
88 778.99E

CASPER, WYOMING

HOLE NO. AM-127C

LOCATION <i>ANDERSON MINE</i>			GAMMA SCALE	<i>500=50 CPS/in</i>
COUNTY <i>YAVAPAI</i> STATE <i>ARIZONA</i>			PROBE TYPE	<i>SCINT</i>
GP. <del><i>1-204.804N</i></del> <i>642,409E</i>			K-FACTOR	<i>2.25 x 10<sup>-5</sup></i>
ELEV. <i>1868</i>			DEAD TIME	<i>9.6 USEC</i>
SEC.	TWP. <i>11N</i>	RGE. <i>10W</i>	TIME CONSTANT	<i>1</i>
DATE	<i>1-23-76</i>		PROBE DIA.	<i>1 1/16"</i>
DEPTH DRILLED	<i>68'</i>		CALIPER	<i>-</i>
DEPTH LOGGED	<i>68'</i>		DIRECTIONAL SURVEY	<i>-</i>
FOOTAGE LOGGED	<i>83'</i>		TEMPERATURE	<i>-</i>
HOLE DIAMETER	<i>5"</i>		OPERATOR	<i>D. BRADLEY</i>
WATER FACTOR	<i>1.152</i>		DRILLER	<i>STEVE</i>
RESISTIVITY	<i>-</i>	OHMS/INCH	CONTRACTOR	<i>UNIVERSAL</i>
SELF POTENTIAL	<i>-</i>	M.V./IN.	LAST A.E.C. PIT RUN	<i>11-1-75</i>
RERUNS	1ST. RUN	2ND. RUN	3RD. RUN	REMARKS:
BOTTOM	<i>55'</i>			
TOP	<i>40'</i>			
TOTAL FEET	<i>15'</i>			
SCALE RUN	<i>5K</i>			



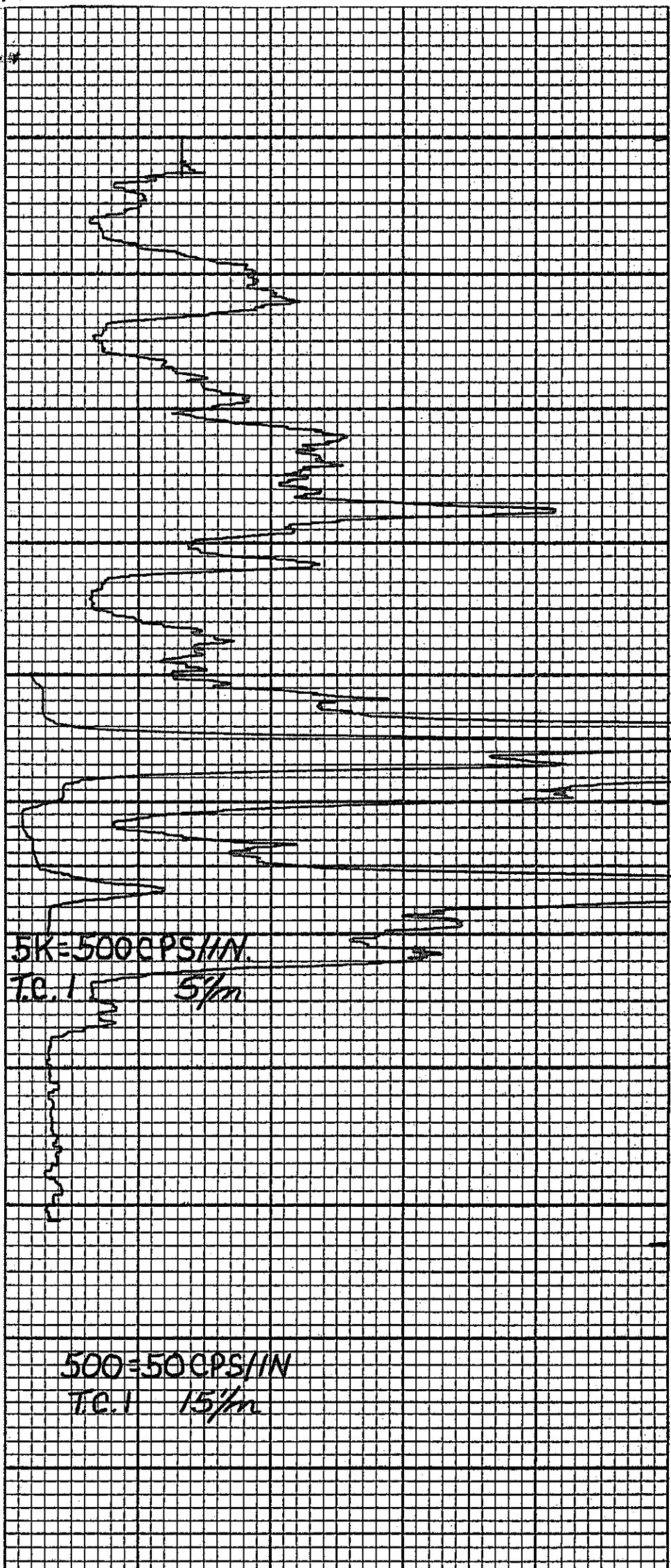
# MINERALS EXPLORATION CO.

1206 792.01N  
87 957.77E

CASPER, WYOMING

HOLE NO. AM-128

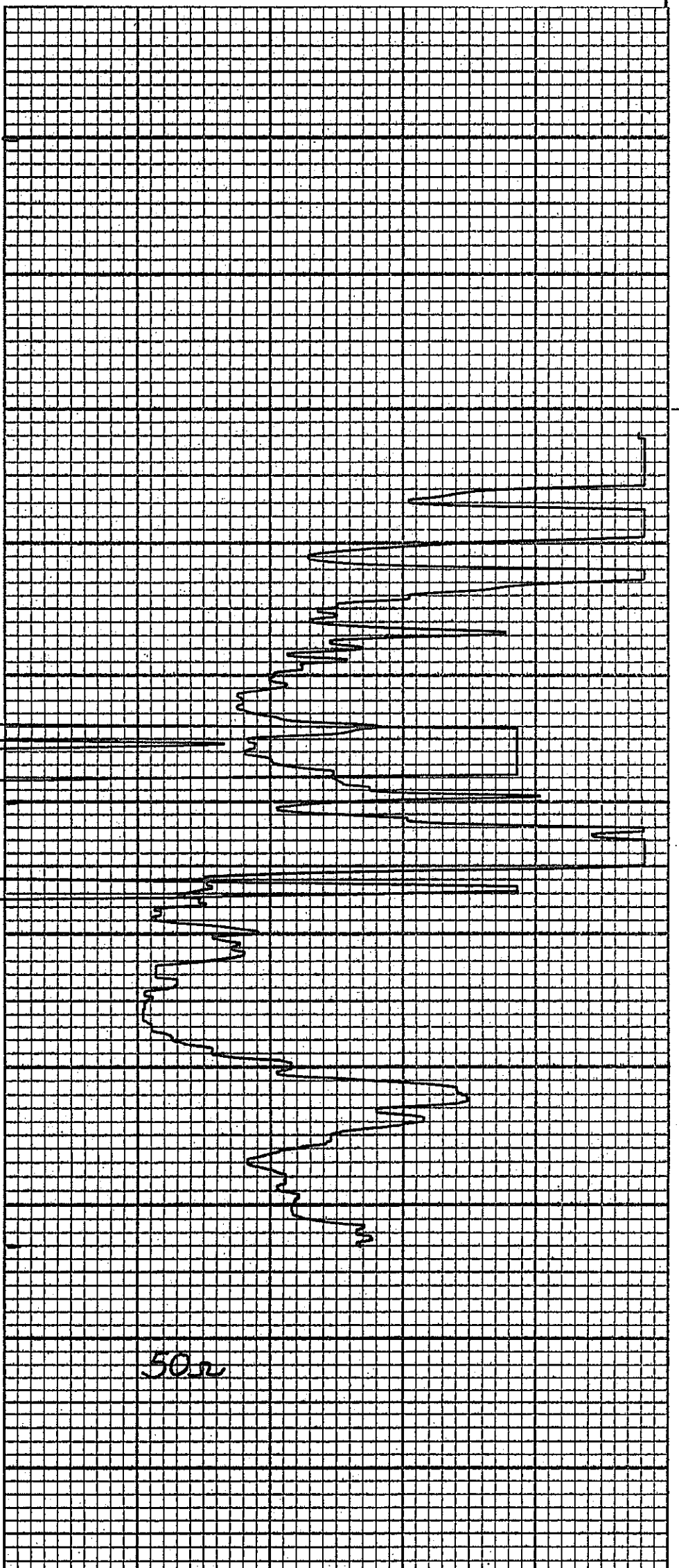
LOCATION <i>ANDERSON MINE</i>			GAMMA SCALE	<i>500=50 CPS/IN.</i>
COUNTY <i>Yavapai</i>	STATE <i>ARIZONA</i>		PROBE TYPE	<i>Scint.</i>
GP. <i>1,204, 595 N</i> <i>641, 595 E</i>	ELEV. <i>1749</i>		K-FACTOR	<i>2.25<sup>10-5</sup></i>
SEC.	TWP. <i>11N</i>	RGE. <i>10W</i>	DEAD TIME	<i>9.6 μ sec.</i>
DATE	<i>Dec. 22, 1975</i>		TIME CONSTANT	<i>1</i>
DEPTH DRILLED	<i>85'</i>		PROBE DIA.	<i>1 1/16"</i>
DEPTH LOGGED	<i>83'</i>		CALIPER	
FOOTAGE LOGGED	<i>██████' 103'</i>		DIRECTIONAL SURVEY	
HOLE DIAMETER	<i>5 1/2" To 85'</i>		TEMPERATURE	
WATER FACTOR	<i>1.172</i>		OPERATOR	<i>Hudson</i>
RESISTIVITY	<i>10</i>	OHMS/INCH	DRILLER	<i>Roberts</i>
SELF POTENTIAL	M.V./IN.		CONTRACTOR	<i>REID</i>
RERUNS	1ST. RUN	2ND. RUN	3RD. RUN	LAST A.E.C. PIT RUN <i>Aug. 2, 1975</i>
BOTTOM	<i>60'</i>			FLUID LEVEL <i>26'</i>
TOP	<i>40'</i>			REMARKS:
TOTAL FEET	<i>20'</i>			
SCALE RUN	<i>5K=500 CPS/IN.</i>			



0'

50'

83'



50m

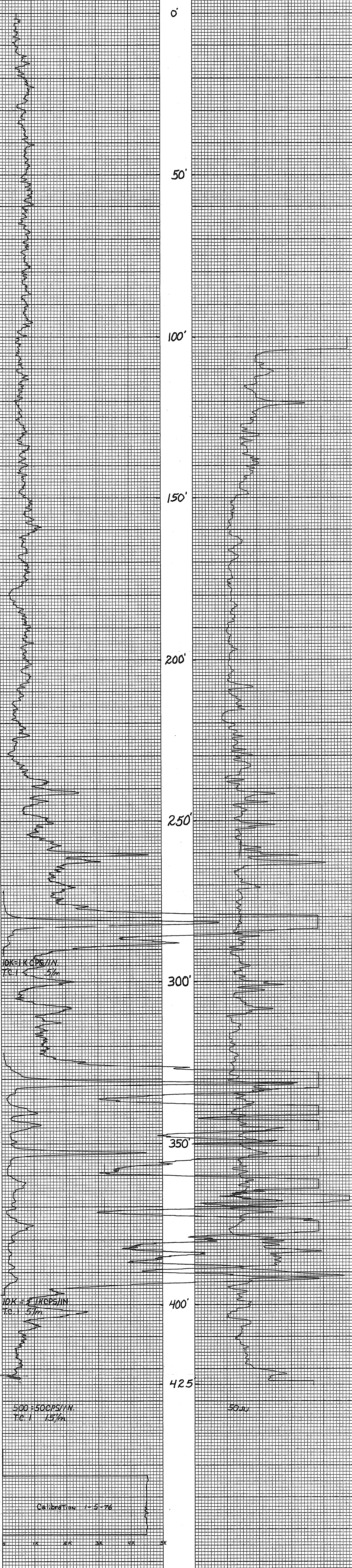
# MINERALS EXPLORATION CO.

CASPER, WYOMING

1205198.80x  
88 344.20E

HOLE NO. AM-129

LOCATION <i>ANDERSON MINE</i>			GAMMA SCALE	500 = 50 CPS/IN.
COUNTY <i>Navajo</i>	STATE <i>ARIZONA</i>		PROBE TYPE	Scint.
GP. <i>1,202, 809 N 642, 010 E</i>	ELEV. <i>1869'</i>		K-FACTOR	$2.25 \cdot 10^{-5}$
SEC.	TWP.	RGE.	DEAD TIME	9.6 $\mu$ sec.
DATE	<i>1-5-76</i>		TIME CONSTANT	1
DEPTH DRILLED	<i>430'</i>		PROBE DIA.	1 1/8"
DEPTH LOGGED	<i>425'</i>		CALIPER	
FOOTAGE LOGGED	<i>520'</i>		DIRECTIONAL SURVEY	
HOLE DIAMETER	<i>5 1/8" To 4.25"</i>		TEMPERATURE	
WATER FACTOR	<i>1.157</i>		OPERATOR	<i>Hudson</i>
RESISTIVITY	<i>50 OHMS/INCH</i>		DRILLER	<i>Sharpe</i>
SELF POTENTIAL	<i>M.V./IN.</i>		CONTRACTOR	<i>REIB</i>
RERUNS	1ST. RUN	2ND. RUN	3RD. RUN	LAST A.E.C. PIT RUN <i>Aug. 2, 1975</i>
BOTTOM	<i>397'</i>	<i>292'</i>		FLUID LEVEL <i>104'</i>
TOP	<i>322'</i>	<i>272'</i>		REMARKS:
TOTAL FEET	<i>75'</i>	<i>20'</i>		
SCALE RUN	<i>10K=1 KCPS/IN. 10K=1 KCPS/IN.</i>			



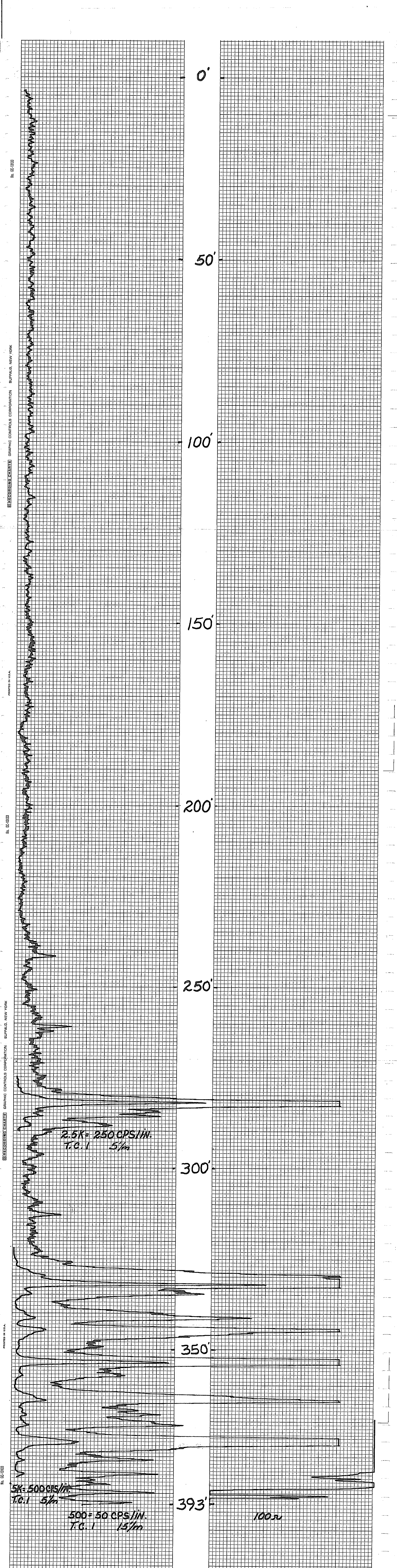
REPRODUCING CHARTERED GRAPHIC CONTROLS CORPORATION BUFFALO, NEW YORK  
 PRINTED IN U.S.A.  
 NO. GC 12101

# MINERALS EXPLORATION CO.

CASPER, WYOMING

HOLE NO. *AM-129C*

LOCATION <i>ANDERSON MINE</i>			GAMMA SCALE	<i>500=50 CPS/in.</i>
COUNTY <i>Yavapai</i>	STATE <i>ARIZ.</i>		PROBE TYPE	<i>Scint.</i>
GP.	ELEV.		K-FACTOR	<i>5.4<sup>10-5</sup></i>
SEC.	TWP.	RGE.	DEAD TIME	<i>7.6 μsec.</i>
DATE	<i>9-14-77</i>		TIME CONSTANT	<i>1</i>
DEPTH DRILLED	<i>396'</i>		PROBE DIA.	<i>1 3/8"</i>
DEPTH LOGGED	<i>393'</i>		CALIPER	
FOOTAGE LOGGED	<i>471'</i>		DIRECTIONAL SURVEY	
HOLE DIAMETER	<i>4"</i>		TEMPERATURE	
WATER FACTOR			OPERATOR	<i>Hudson</i>
RESISTIVITY	<i>100 OHMS/INCH</i>		DRILLER	<i>Bayles</i>
SELF POTENTIAL	<i>M.V./IN.</i>		CONTRACTOR	
RE RUNS	1ST. RUN	2ND. RUN	3RD. RUN	LAST A.E.C. PIT RUN <i>9-29-77</i>
BOTTOM	<i>385'</i>	<i>290'</i>		FLUID LEVEL
TOP	<i>322'</i>	<i>275'</i>		REMARKS:
TOTAL FEET	<i>63'</i>	<i>15'</i>		
SCALE RUN	<i>5K=500CPS/in. 2.5K=250CPS/in.</i>			



# MINERALS EXPLORATION CO.

CASPER, WYOMING

1206 056.12N  
87 110.41E

HOLE NO. AM-130

LOCATION ANDERSON MINE			GAMMA SCALE	500=50 CPS/IN.	
COUNTY	YAVAPAI	STATE	ARIZONA	PROBE TYPE	Scint.
GP.	T. 203.674N R. 640.761E	ELEV.	1870'	K-FACTOR	2.25 <sup>10-5</sup>
SEC.	TWP.	RGE.		DEAD TIME	9.6 μsec.
DATE	1-5-76			TIME CONSTANT	1
DEPTH DRILLED	310'			PROBE DIA.	1 1/8"
DEPTH LOGGED	311'			CALIPER	
FOOTAGE LOGGED	321'			DIRECTIONAL SURVEY	
HOLE DIAMETER	5 1/2" To 65'	5" To 310'		TEMPERATURE	
WATER FACTOR	1.172	1.152		OPERATOR	Hudson
RESISTIVITY	50 OHMS/INCH			DRILLER	Roberts
SELF POTENTIAL	M.V./IN.			CONTRACTOR	REID
RERUNS	1ST. RUN	2ND. RUN	3RD. RUN	LAST A.E.C. PIT RUN	Aug. 2, 1975
BOTTOM	212'			FLUID LEVEL	136'
TOP	202'			REMARKS:	
TOTAL FEET	10'				
SCALE RUN	5K=500 CPS/IN.				

