



CONTACT INFORMATION  
Mining Records Curator  
Arizona Geological Survey  
3550 N. Central Ave, 2nd floor  
Phoenix, AZ, 85012  
602-771-1601  
<http://www.azgs.az.gov>  
[inquiries@azgs.az.gov](mailto:inquiries@azgs.az.gov)

The following file is part of the Anderson Mine Collection

#### **ACCESS STATEMENT**

These digitized collections are accessible for purposes of education and research. We have indicated what we know about copyright and rights of privacy, publicity, or trademark. Due to the nature of archival collections, we are not always able to identify this information. We are eager to hear from any rights owners, so that we may obtain accurate information. Upon request, we will remove material from public view while we address a rights issue.

#### **CONSTRAINTS STATEMENT**

The Arizona Geological Survey does not claim to control all rights for all materials in its collection. These rights include, but are not limited to: copyright, privacy rights, and cultural protection rights. The User hereby assumes all responsibility for obtaining any rights to use the material in excess of "fair use."

The Survey makes no intellectual property claims to the products created by individual authors in the manuscript collections, except when the author deeded those rights to the Survey or when those authors were employed by the State of Arizona and created intellectual products as a function of their official duties. The Survey does maintain property rights to the physical and digital representations of the works.

#### **QUALITY STATEMENT**

The Arizona Geological Survey is not responsible for the accuracy of the records, information, or opinions that may be contained in the files. The Survey collects, catalogs, and archives data on mineral properties regardless of its views of the veracity or accuracy of those data.

Q.A.0.1 AM # 201

Century Geophysical Corporation  
 Tube O-10-100

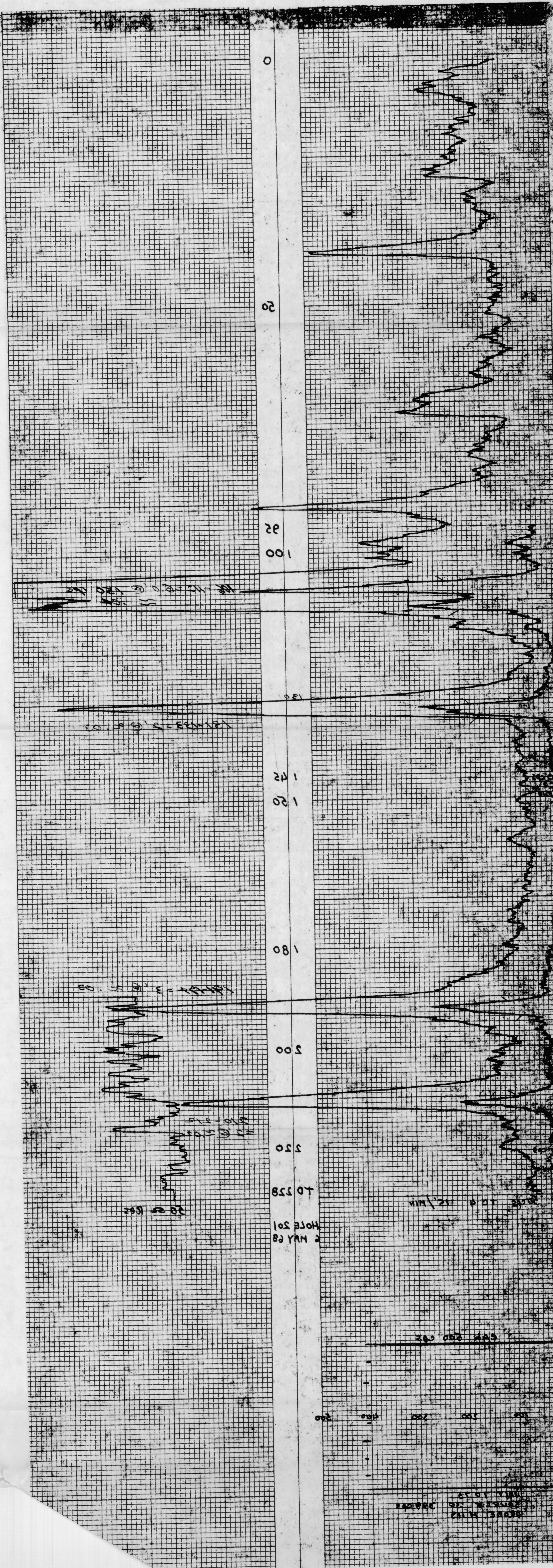


1504007 N 64133 E

HOLE NO. 201	DATE MAY 28	COMPANY BETTY OIL CO
T.D. DRILLED 2304	LOG MEASURED FROM 2150	AREA Anderson Mine
WELL SIZE 4 1/2	LOG MEASURED TO 318	COUNTY YAVAPAI
BORE HOLE FLUID AIR DRILLED	LOG MEASURED FROM 2150	STATE ARIZONA
RESISTIVITY	LOG MEASURED TO 318	OPERATOR CITY OIL CO
RESISTIVITY	LOG MEASURED FROM 2150	UNIT NO. STORES
RESISTIVITY	LOG MEASURED TO 318	LOCATION 1213
RESISTIVITY	LOG MEASURED FROM 2150	DRIVE WICKENBURG HWY
RESISTIVITY	LOG MEASURED TO 318	TIME IN 10:00
RESISTIVITY	LOG MEASURED FROM 2150	TIME OUT 10:20
RESISTIVITY	LOG MEASURED TO 318	LOGGING SPEED 0.3
RESISTIVITY	LOG MEASURED FROM 2150	TOTAL 5.1
RESISTIVITY	LOG MEASURED TO 318	ROUNDTRIP
RESISTIVITY	LOG MEASURED FROM 2150	MILEAGE
RESISTIVITY	LOG MEASURED TO 318	STANDARD
RESISTIVITY	LOG MEASURED FROM 2150	CHANGES
RESISTIVITY	LOG MEASURED TO 318	HR.

NATURAL GAMMA RAY  
 COUNTS PER SECOND

RESISTANCE  
 CALIBER



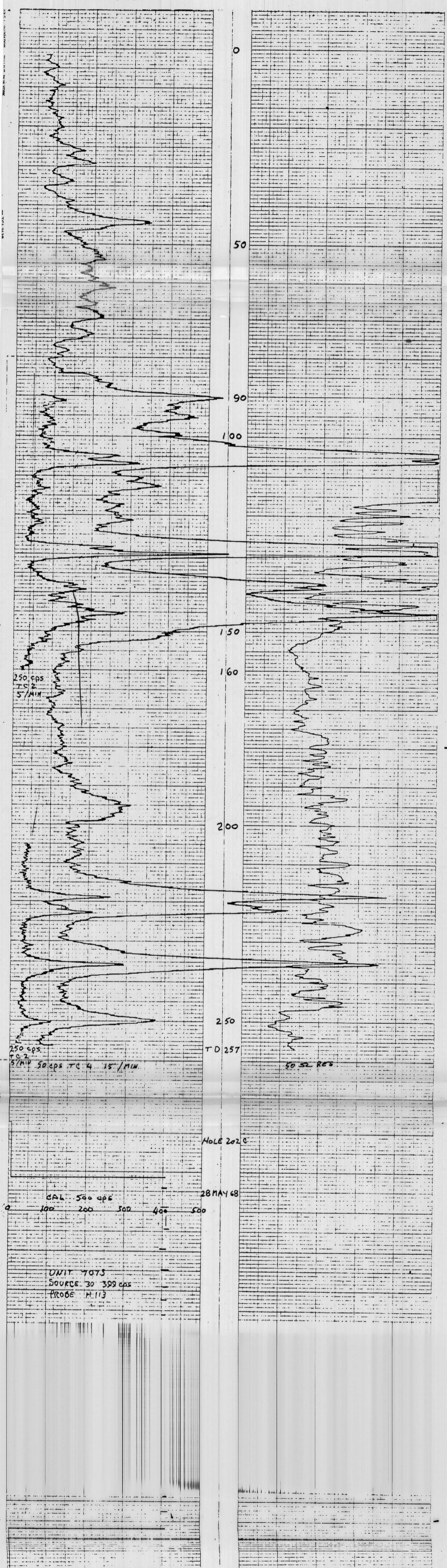
202C



COMPANY: BETTY OIL CO  
 SURF NO: 202C  
 AREA: ANDERSON MINE  
 COUNTY: YAVAPAI  
 SECTION: ARIZONA  
 TOWNSHIP: SURFACE  
 DATE: 28 MAY 68  
 WELL NO: ANDERSON MINE AIR DRILLER  
 STATE: ARIZONA  
 CITY: BETTY OIL CO  
 DATE: 28 MAY 68  
 DEPTH: 378  
 WIRELOG NO: 1121  
 SCALE: 3.0 0.145  
 0.5 0.845  
 1.0  
 4.5  
 500 cps  
 SOURCE 30 399 cps  
 PROBE SIZE 18  
 RTS FULL SCALE 50  
 PROBE M113

SELF POTENTIAL  
 NATURAL GAMMA RAY  
 COUNTS PER SECOND

CALIPER  
 RESISTANCE

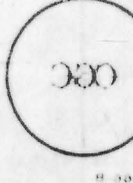


RECORDING CHARTS MANUFACTURED BY CENTURY GEOPHYSICAL CORPORATION BUFFALO, NEW YORK

Q. 10.1

# AM 203

1503207 N 841515 E

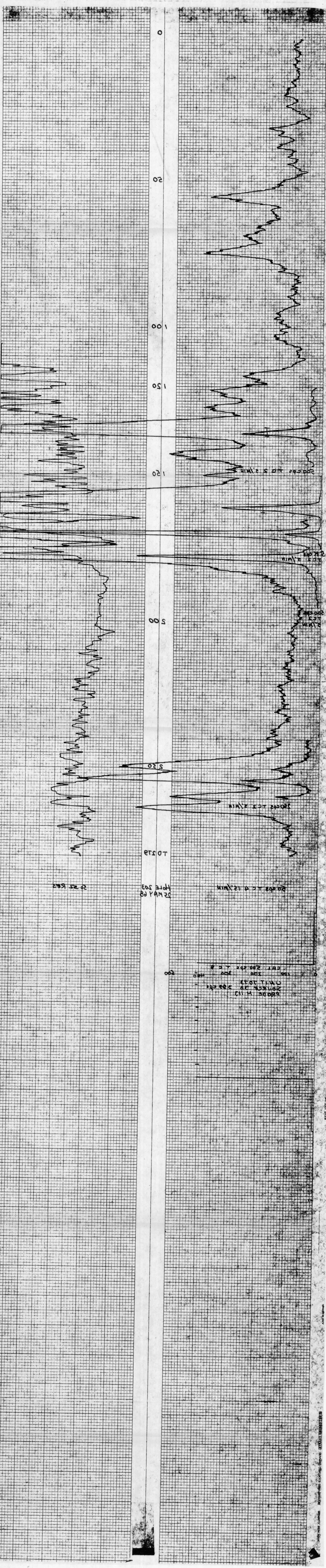


SECTION	YAVAPAI	TOWNSHIP	381	RANGE	2	STATE	ARIZONA
COUNTY	YAVAPAI	TOTAL FEET LOGGED		TOTAL FEET LOGGED		DATE	
AREA	ANDERSON MINE	381 WICKENBURG		381		23 MAY 68	
BORE HOLE	203	GERTY CIR NO		GERTY CIR NO		CONTRACTOR	
COMPARA	203	STOKES		STOKES		OPERATOR	
DATE	23 MAY 68	GERTY CIR NO		GERTY CIR NO		UNIT NO	
TIME CONSTANT	20	GERTY CIR NO		GERTY CIR NO		LOCATION	
GAMMA TUBE SCALE	30	GERTY CIR NO		GERTY CIR NO		TIME IN	
FROM	147	GERTY CIR NO		GERTY CIR NO		TIME OUT	
TO	140	GERTY CIR NO		GERTY CIR NO		STANDBY	
TOTAL	27	GERTY CIR NO		GERTY CIR NO		LOGGING SPEED	
INITIAL RUN	50	GERTY CIR NO		GERTY CIR NO		TOTAL	
T. D. LOGGED	279	GERTY CIR NO		GERTY CIR NO		LOGGING SPEED	
GAMMA TUBE SCALE	20	GERTY CIR NO		GERTY CIR NO		TOTAL	
TIME CONSTANT	20	GERTY CIR NO		GERTY CIR NO		LOGGING SPEED	
LOGGING SPEED	200	GERTY CIR NO		GERTY CIR NO		TOTAL	
CALIBRATION	12	GERTY CIR NO		GERTY CIR NO		LOGGING SPEED	
SOURCE NO	30	GERTY CIR NO		GERTY CIR NO		TOTAL	
PORE SIZE	30	GERTY CIR NO		GERTY CIR NO		LOGGING SPEED	
RES. TUBE SCALE	30	GERTY CIR NO		GERTY CIR NO		TOTAL	
FROM	147	GERTY CIR NO		GERTY CIR NO		LOGGING SPEED	
TO	140	GERTY CIR NO		GERTY CIR NO		TOTAL	
TOTAL	27	GERTY CIR NO		GERTY CIR NO		LOGGING SPEED	

NOTE: AT 130 TO 140 ON 200 CPS. FURTHER ON TO 4 REASON ON T.C. 2. CALIBER

SELF POTENTIAL NATURAL GAMMA RAY COUNTS PER SECOND

RESISTANCE OHMS

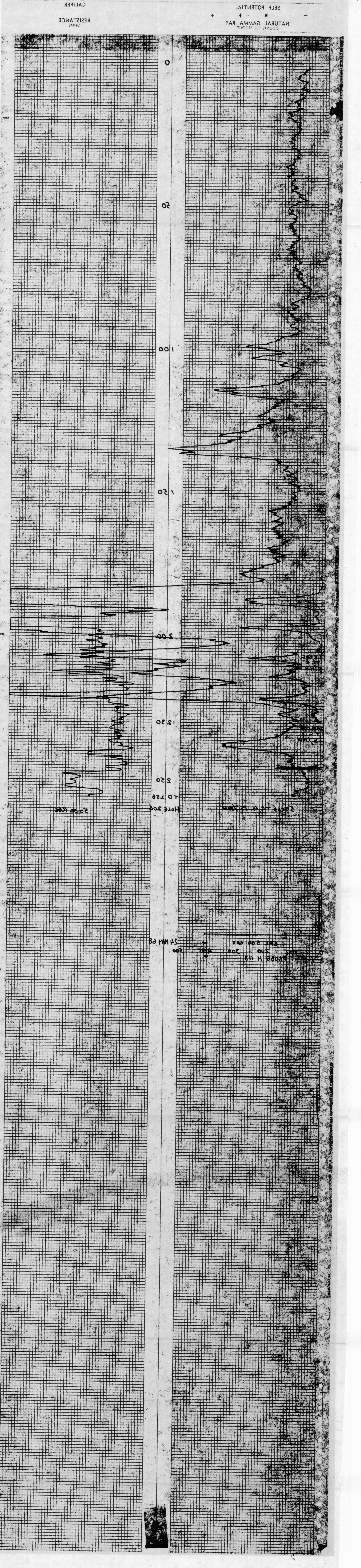


402 # AM # 204

150330 N 041712 E

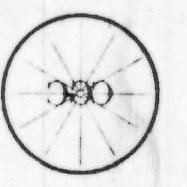
Century Geophysical Corporation  
 150330 N 041712 E  
 24 MAY 68  
 YAVAPAI ARIZONA  
 ANDERSON MINE  
 GETTY OIL CO  
 310 MICHELETTA AVE  
 TOWNSHIP RANGE  
 SURFACE 1817  
 T D LOGGED 250  
 GAMMA TUBE SCALE 20  
 TIME CONSTANT 4  
 LOGGING SPEED 12  
 CALIBRATION TOTAL 25  
 SOURCE NO 200092  
 SOURCE AVE 30  
 PROBE SIZE 1 1/8  
 PROBE H 113  
 COMPANY GETTY OIL CO  
 AREA ANDERSON MINE  
 BORE HOLE 204  
 SECTION YAVAPAI ARIZONA  
 COUNTY ANDERSON MINE  
 STATE YAVAPAI  
 DATE 24 MAY 68  
 WELL NO 204  
 LOCATION 310 MICHELETTA AVE  
 TOWNSHIP RANGE SURFACE 1817  
 DATE 24 MAY 68  
 COMPANY GETTY OIL CO  
 AREA ANDERSON MINE  
 BORE HOLE 204  
 SECTION YAVAPAI ARIZONA  
 COUNTY ANDERSON MINE  
 STATE YAVAPAI  
 DATE 24 MAY 68  
 WELL NO 204  
 LOCATION 310 MICHELETTA AVE  
 TOWNSHIP RANGE SURFACE 1817

SCALE	250	250
LOGGING SPEED	2	2
TIME CONSTANT	5	5
TOTAL	25	25



505 # MA

Q. 0.1



Century Geophysical Corporation  
Tulsa, Oklahoma

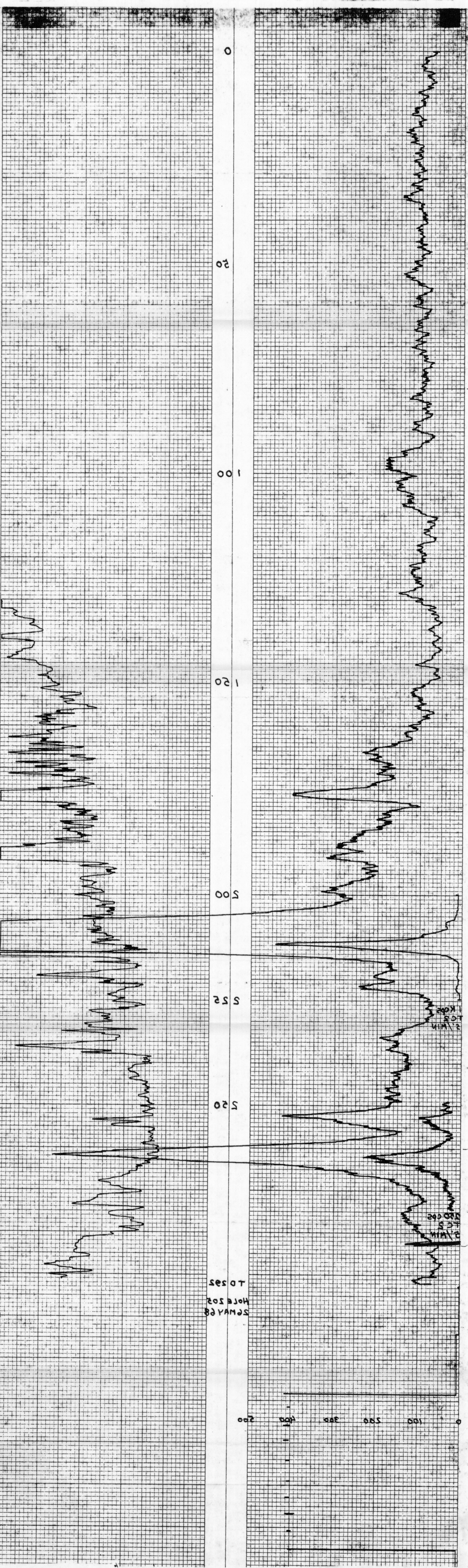
HOLE NO. 505		DATE 26 MAY 68	
T D DRILLED 300 FT.		COUNTRY YAVAPAI	
BIT SIZE 5 7/8 IN.		STATE ARIZONA	
CASING 1 1/2 IN.		COUNTY YAVAPAI	
BORE HOLE FLUID AIR DRILLED		RANGE SURFACE 1823	
DENSITY		TOWNSHIP	
RESISTIVITY		SECTION	
OPERATOR		TOWN	
GETTY OIL CO		RANGE	
UNIT NO. 203		COUNTY	
LOCATION 345 WIGWAG AVE		AREA	
DIVISION		BORER HOLE	
TIME IN 3.0 HR.		505	
TIME OUT 12:00		200	
STANDBY 0.2 HR.		200	
LOGGING SPEED 0.7 HR.		4	
TOTAL 4.5 HR.		12	
MILEAGE		CALIBRATION	
STANDARD		SOURCE VALUE	
CHARACTER		200	
MILE		30	
HOLE		1/2	
RES. FULL SCALE		20	
PROBE SIZE		PROBE M13	
PROB. 2151		2 P.	
SOURCE NO. 30		M.V.	
CORR. 300			

NATURAL GAMMA RAY  
COUNTS PER SECOND

RESISTANCE  
OHMS

SELF POTENTIAL

CALIPER



SMAYERS  
HOLE 505  
T0525

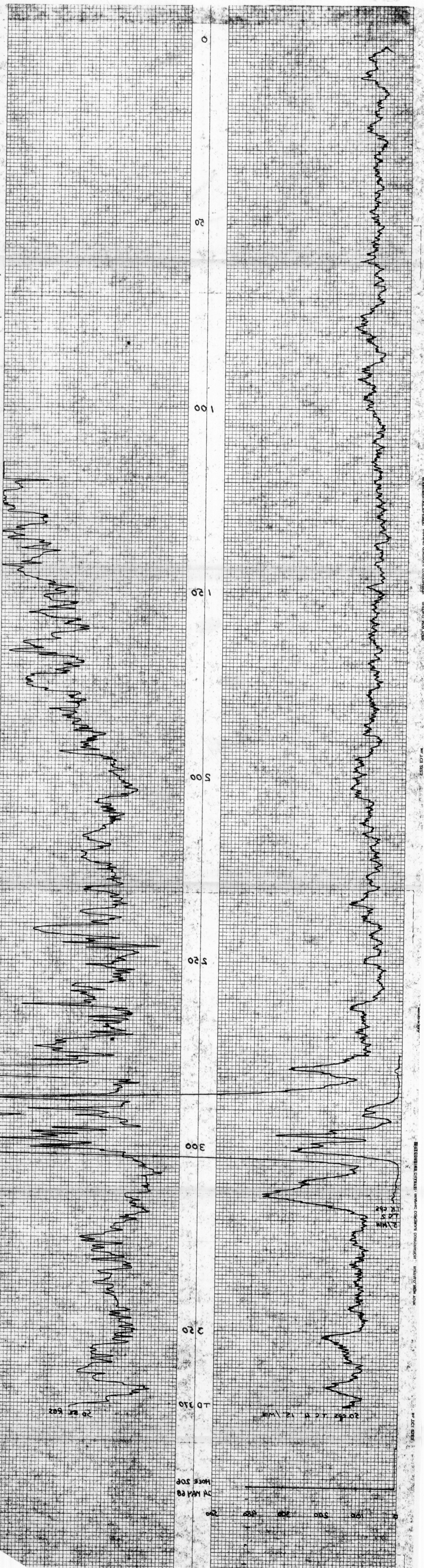
Gully Oil

AM #206

150507 N 84121 E

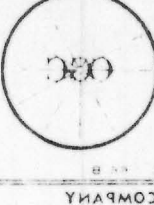
HOLE NO. 306		T.D. DRILLED 380 FT.	
SEC. 306		TWP. 30 N. R. 12 E.	
RANGE 12 E.		COUNTY YAVAPAI	
STATE ARIZONA		DATE 24 MAY 68	
AREA ANDERSON MINE		COMPANY GULLEY OIL CO.	
OPERATOR STORES		UNIT NO. 2013	
LOCATION 24 MAY 68		RANGE 12 E.	
MILEAGE 41.8		TOWNSHIP 30 N.	
DRIVE WILSONS AIR		SECTION 30	
TIME IN 1.1 HR.		TIME OUT 11:32	
SCALE 1 K. OHM		SCALE 310 FT.	
LOGGING SPEED 2 SEC.		LOGGING SPEED 5 SEC.	
TOTAL 1.1 HR.		TOTAL 315 FT.	
MILEAGE 41.8		TOTAL 315 FT.	
CALIBRATION 40		TOTAL 315 FT.	
PROJECT NO. 30		PROJECT AVAIL. 30	
PROB. SIZE 1.5		RES. FULL SCALE 30	
M. 113		P. 113	

NATURAL GAMMA RAY  
 COUNTER SECOND  
 SELF POTENTIAL  
 RESISTANCE  
 CALIBER



Oil Well # 207  
Getty

150331N 44121E



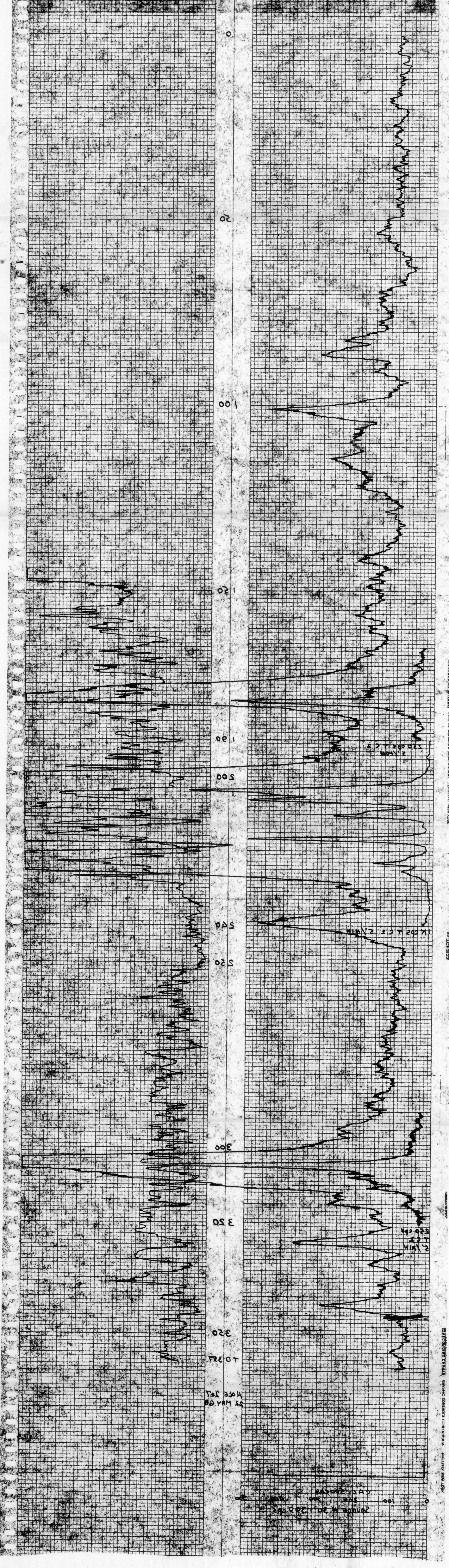
Century Geophysical Corporation  
Tulsa, Oklahoma

WELL NO. 207		DATE 22 MAY 68		COMPANY BETTY OIL CO
SEC. 360	TWP. 20N	RANGE 18E	COUNTY YAVAPAI	STATE ARIZONA
AREA ANDERSON MINE AIRDRIFTED				
OPERATOR GETTY OIL CO				
UNIT NO. 207				
TOTAL FEET LOGGED 1855'		STATE ARIZONA	COUNTY YAVAPAI	TOWNSHIP ANDERSON MINE
SURFACE 1855'				
INITIAL RUN				
TOTAL 30	TO 12	FROM 4	LOGGING SPEED 5	SCALE 520
TOTAL 20	TO 15	FROM 10	LOGGING SPEED 5	SCALE 1K
TOTAL 52	TO 10	FROM 15	LOGGING SPEED 2	SCALE 520
CALIBRATION SOURCE NO. 300092				
SOURCE VALUE 300092				
PROBE SIZE 1 7/8"				
BIS. FULL SCALE 20				
WELL				

540-360 H 1/2  
0-540 28  
811 size

RESISTANCE  
CHMS

SELF POTENTIAL  
NATURAL GAMMA RAY  
COUNTS PER SECOND



RECORDED ON GRID - GEOPHYSICAL CORPORATION - BUFFALO, NEW YORK



Q.H. 0.1 AM # 208

1503101 N 84121E

Century Geophysical Corporation  
 TULSA, OKLAHOMA

COMPANY: GETTY OIL Co  
 AREA: 208  
 SECTION: YAVAPAI  
 LOCATION: ANDERSON MINE  
 STATE: ARIZONA  
 DATE: 23 MAY 68  
 WELL: ANDERSON MINE AIR DRILLED  
 FILT SIZE: 5  
 LOGGING SPEED: 2000  
 LOGGING RATE: 2  
 LOGGING TIME: 1.3

INITIAL RUN: 13  
 TOTAL: 22  
 CARBONATION: 12  
 TO: 202  
 FROM: 180  
 SCALE: 2000  
 SCALE: 2000  
 PROBE H 112 TOTAL 22

DEPTH	LOGGING SPEED	LOGGING RATE	LOGGING TIME
2000	2	1.3	2000
2000	2	1.3	2000
2000	2	1.3	2000

