



CONTACT INFORMATION
Mining Records Curator
Arizona Geological Survey
3550 N. Central Ave, 2nd floor
Phoenix, AZ, 85012
602-771-1601
<http://www.azgs.az.gov>
inquiries@azgs.az.gov

The following file is part of the Anderson Mine Collection

ACCESS STATEMENT

These digitized collections are accessible for purposes of education and research. We have indicated what we know about copyright and rights of privacy, publicity, or trademark. Due to the nature of archival collections, we are not always able to identify this information. We are eager to hear from any rights owners, so that we may obtain accurate information. Upon request, we will remove material from public view while we address a rights issue.

CONSTRAINTS STATEMENT

The Arizona Geological Survey does not claim to control all rights for all materials in its collection. These rights include, but are not limited to: copyright, privacy rights, and cultural protection rights. The User hereby assumes all responsibility for obtaining any rights to use the material in excess of "fair use."

The Survey makes no intellectual property claims to the products created by individual authors in the manuscript collections, except when the author deeded those rights to the Survey or when those authors were employed by the State of Arizona and created intellectual products as a function of their official duties. The Survey does maintain property rights to the physical and digital representations of the works.

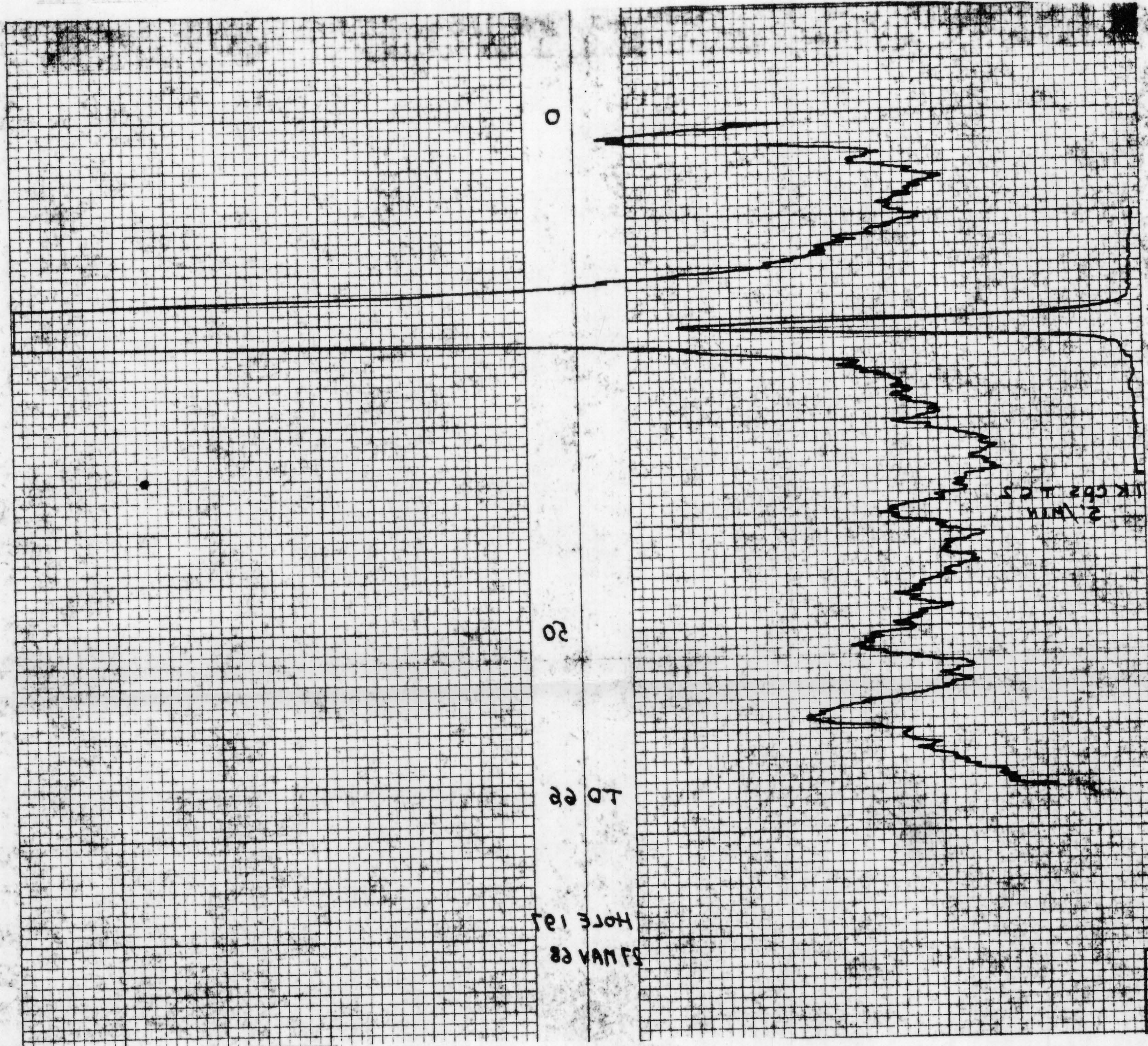
QUALITY STATEMENT

The Arizona Geological Survey is not responsible for the accuracy of the records, information, or opinions that may be contained in the files. The Survey collects, catalogs, and archives data on mineral properties regardless of its views of the veracity or accuracy of those data.

15035051

RESISTANCE
CALIPER

SELF POTENTIAL
NATURAL GAMMA RAY
COUNTS PER SECOND



14 MAY 68

192

193

4

ANDERSON MINE AIR CRIMES

YAVAPAI

ARIZONA

GETTY OIL CO

STONES

24 MAY 68

1013

312 WICKRENDEN HALL

2.0-13.45

2.3-14.35

6.9

6.1

35

30



COMPANY

GETTY OIL CO

DATE

19L

WELL

ANDERSON MINE

COUNTY

YAVAPAI

STATE

ARIZONA

SURFACE

INITIAL RUN

TIME

279

250

5

1K

2.3-14.35

GAMMA RAY

50

2

5

2

5

6.9

TIME CONSTANT

4

205

135

65

6.1

COUNTY

15

16

135

35

30

CALIBRATION

500cps TC 8

45

WELL NO.

30 399cp

PROBE SIZE

18

WELL TYPE

50

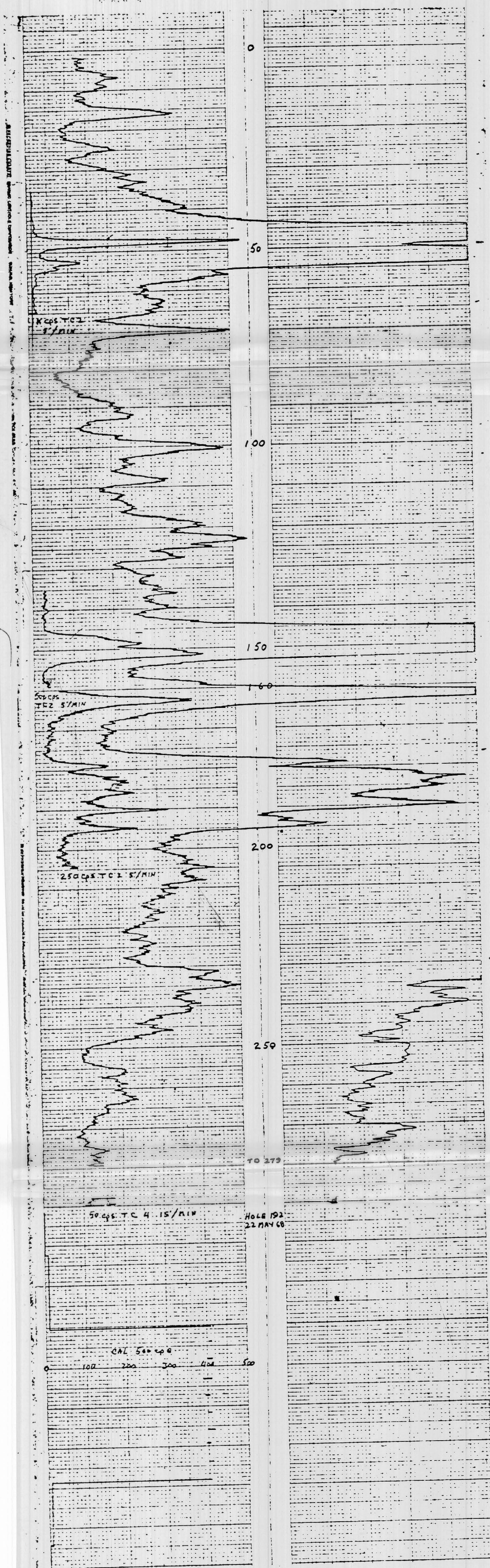
PROBE 1115

SELF POTENTIAL

CALIPER

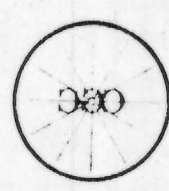
NATURAL GAMMA RAY

RESISTANCE



Getty 0.1 AM #193

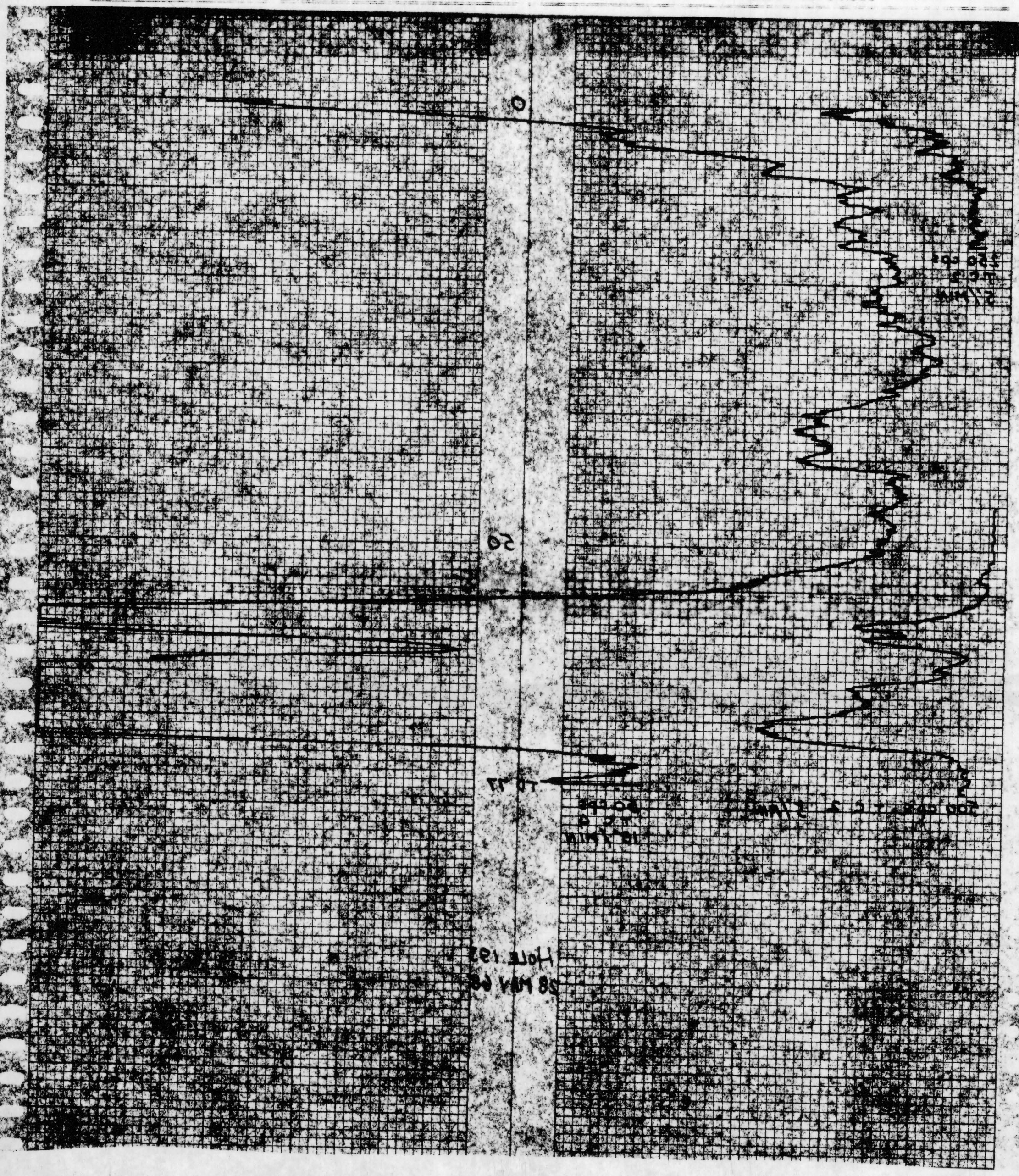
1503217 W 643821 E



Century Geophysical Corporation
Tulsa, Oklahoma

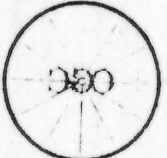
HOLE NO. 193		DATE 28 MAY 68		TOWNSHIP		RANGE		LOG MEASURED FROM SURFACE 1890'		TOTAL FEET LOGGED 154		LOCATION WICKENBURG ARIZ		UNIT NO. 7073		OPERATOR STOKES		COMPANY GETTY OIL CO		STATE ARIZONA		COUNTY YAVAPAI		BORER HOLE 193		COMPANY GETTY OIL CO	
T. D. DRILLED		BIT SIZE 2 1/2		Casing		80		AREA		YAVAPAI		WICKENBURG ARIZ		UNIT NO. 7073		OPERATOR STOKES		COMPANY GETTY OIL CO		STATE ARIZONA		COUNTY YAVAPAI		BORER HOLE 193		COMPANY GETTY OIL CO	
T. D. LOGGED		77		SCALE		200		LOGGING SPEED		2		T. C.		2		FROM		17		TO		42		LOGGING SPEED		12	
GAMMA (FULL SCALE)		20		SCALE		200		LOGGING SPEED		2		T. C.		2		FROM		17		TO		42		LOGGING SPEED		12	
TIME CONSTANT		4		SCALE		200		LOGGING SPEED		2		T. C.		2		FROM		17		TO		42		LOGGING SPEED		12	
CALIBRATION		200		SCALE		200		LOGGING SPEED		2		T. C.		2		FROM		17		TO		42		LOGGING SPEED		12	
SOURCE NO.		30		SCALE		200		LOGGING SPEED		2		T. C.		2		FROM		17		TO		42		LOGGING SPEED		12	
PROBE SIZE		1/8		SCALE		200		LOGGING SPEED		2		T. C.		2		FROM		17		TO		42		LOGGING SPEED		12	
RES. FULL SCALE		1/8		SCALE		200		LOGGING SPEED		2		T. C.		2		FROM		17		TO		42		LOGGING SPEED		12	
2. P.		1/8		SCALE		200		LOGGING SPEED		2		T. C.		2		FROM		17		TO		42		LOGGING SPEED		12	
M.V./in.		1/8		SCALE		200		LOGGING SPEED		2		T. C.		2		FROM		17		TO		42		LOGGING SPEED		12	
Pore H113		1/8		SCALE		200		LOGGING SPEED		2		T. C.		2		FROM		17		TO		42		LOGGING SPEED		12	

SELF POTENTIAL
NATURAL GAMMA RAY
COUNTS PER SECOND
RESISTANCE
OHMS
CALIPER



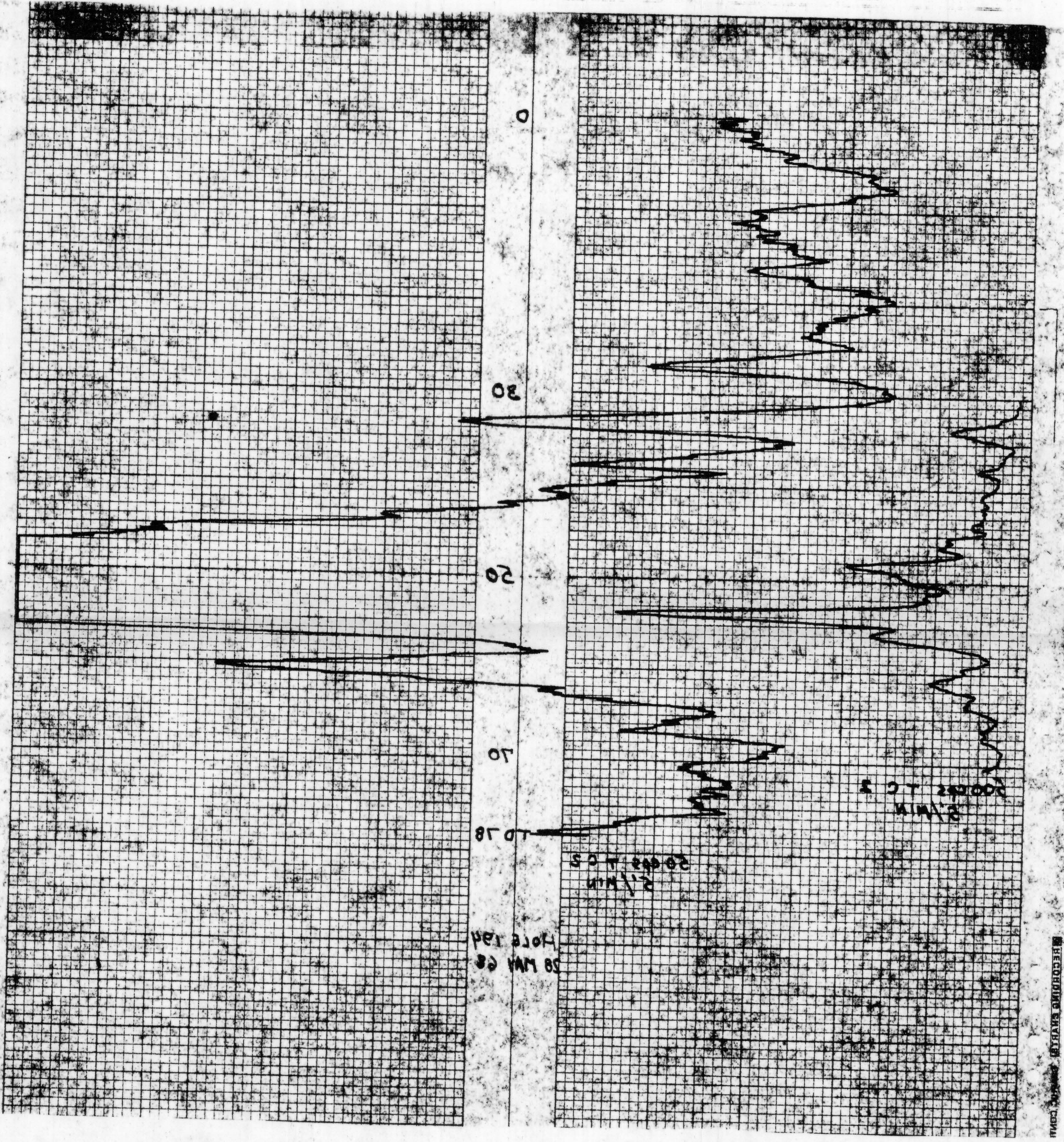
1503407 N 64321 E 4194 AM 0:10 PM

Century Geophysical Corporation
Tulsa, Oklahoma



DATE 28 MAY 68		COUNTY YAVAPAI		TOWNSHIP 18N		RANGE 18E		LOG MEASURED FROM SURFACE		TOTAL FEET LOGGED 118		DATE 28 MAY 68		COUNTY YAVAPAI		TOWNSHIP 18N		RANGE 18E		LOG MEASURED FROM SURFACE		TOTAL FEET LOGGED 118	
AREA ANDERSON MINE		STATE ARIZONA		COMPANY GETTY OIL CO		OPERATOR STORES		RESISTIVITY		DENSITY		BORE HOLE FLUID AIR		BIT SIZE 5 1/8"		T.D. DRILLED 80 FT		HOLE NO. 181					
INITIAL RUN		T.D. LOGGED 78 FT		GAMMA (FULL SCALE) 20 Cps		TIME CONSTANT A		LOGGING SPEED 12 Ft./Min.		TOTAL 40 3/4		CALIBRATION 200 Cps		SOURCE NO. 30		PROBE SIZE 1 3/8"		RES. (FULL SCALE)					
SCALE		SCALE		SCALE		SCALE		SCALE		SCALE		SCALE		SCALE		SCALE		SCALE		SCALE		SCALE	
LOGGING SPEED 200 Cps		LOGGING SPEED 20 Cps		LOGGING SPEED 20 Cps		LOGGING SPEED 20 Cps		LOGGING SPEED 20 Cps		LOGGING SPEED 20 Cps		LOGGING SPEED 20 Cps		LOGGING SPEED 20 Cps		LOGGING SPEED 20 Cps		LOGGING SPEED 20 Cps		LOGGING SPEED 20 Cps		LOGGING SPEED 20 Cps	
FROM 70 FT		FROM 30 FT		FROM 70 FT		FROM 30 FT		FROM 70 FT		FROM 30 FT		FROM 70 FT		FROM 30 FT		FROM 70 FT		FROM 30 FT		FROM 70 FT		FROM 30 FT	
TO 30 FT		TO 70 FT		TO 30 FT		TO 70 FT		TO 30 FT		TO 70 FT		TO 30 FT		TO 70 FT		TO 30 FT		TO 70 FT		TO 30 FT		TO 70 FT	
TOTAL 40 3/4		TOTAL 40 3/4		TOTAL 40 3/4		TOTAL 40 3/4		TOTAL 40 3/4		TOTAL 40 3/4		TOTAL 40 3/4		TOTAL 40 3/4		TOTAL 40 3/4		TOTAL 40 3/4		TOTAL 40 3/4		TOTAL 40 3/4	
STANDBY 0.7 Hr		STANDBY 0.7 Hr		STANDBY 0.7 Hr		STANDBY 0.7 Hr		STANDBY 0.7 Hr		STANDBY 0.7 Hr		STANDBY 0.7 Hr		STANDBY 0.7 Hr		STANDBY 0.7 Hr		STANDBY 0.7 Hr		STANDBY 0.7 Hr		STANDBY 0.7 Hr	
TIME IN 13:52		TIME IN 13:52		TIME IN 13:52		TIME IN 13:52		TIME IN 13:52		TIME IN 13:52		TIME IN 13:52		TIME IN 13:52		TIME IN 13:52		TIME IN 13:52		TIME IN 13:52		TIME IN 13:52	
TIME OUT 13:40		TIME OUT 13:40		TIME OUT 13:40		TIME OUT 13:40		TIME OUT 13:40		TIME OUT 13:40		TIME OUT 13:40		TIME OUT 13:40		TIME OUT 13:40		TIME OUT 13:40		TIME OUT 13:40		TIME OUT 13:40	
CHARGEABLE 1.0 Hr		CHARGEABLE 1.0 Hr		CHARGEABLE 1.0 Hr		CHARGEABLE 1.0 Hr		CHARGEABLE 1.0 Hr		CHARGEABLE 1.0 Hr		CHARGEABLE 1.0 Hr		CHARGEABLE 1.0 Hr		CHARGEABLE 1.0 Hr		CHARGEABLE 1.0 Hr		CHARGEABLE 1.0 Hr		CHARGEABLE 1.0 Hr	
ROUNDTRIP 0.2 Hr		ROUNDTRIP 0.2 Hr		ROUNDTRIP 0.2 Hr		ROUNDTRIP 0.2 Hr		ROUNDTRIP 0.2 Hr		ROUNDTRIP 0.2 Hr		ROUNDTRIP 0.2 Hr		ROUNDTRIP 0.2 Hr		ROUNDTRIP 0.2 Hr		ROUNDTRIP 0.2 Hr		ROUNDTRIP 0.2 Hr		ROUNDTRIP 0.2 Hr	
MILEAGE 1.0		MILEAGE 1.0		MILEAGE 1.0		MILEAGE 1.0		MILEAGE 1.0		MILEAGE 1.0		MILEAGE 1.0		MILEAGE 1.0		MILEAGE 1.0		MILEAGE 1.0		MILEAGE 1.0		MILEAGE 1.0	
WHEELS 1.0		WHEELS 1.0		WHEELS 1.0		WHEELS 1.0		WHEELS 1.0		WHEELS 1.0		WHEELS 1.0		WHEELS 1.0		WHEELS 1.0		WHEELS 1.0		WHEELS 1.0		WHEELS 1.0	
Hr.		Hr.		Hr.		Hr.		Hr.		Hr.		Hr.		Hr.		Hr.		Hr.		Hr.		Hr.	

SELF POTENTIAL
NATURAL GAMMA RAY
COUNTS PER SECOND
+
RESISTANCE
OHMS
CALIPER



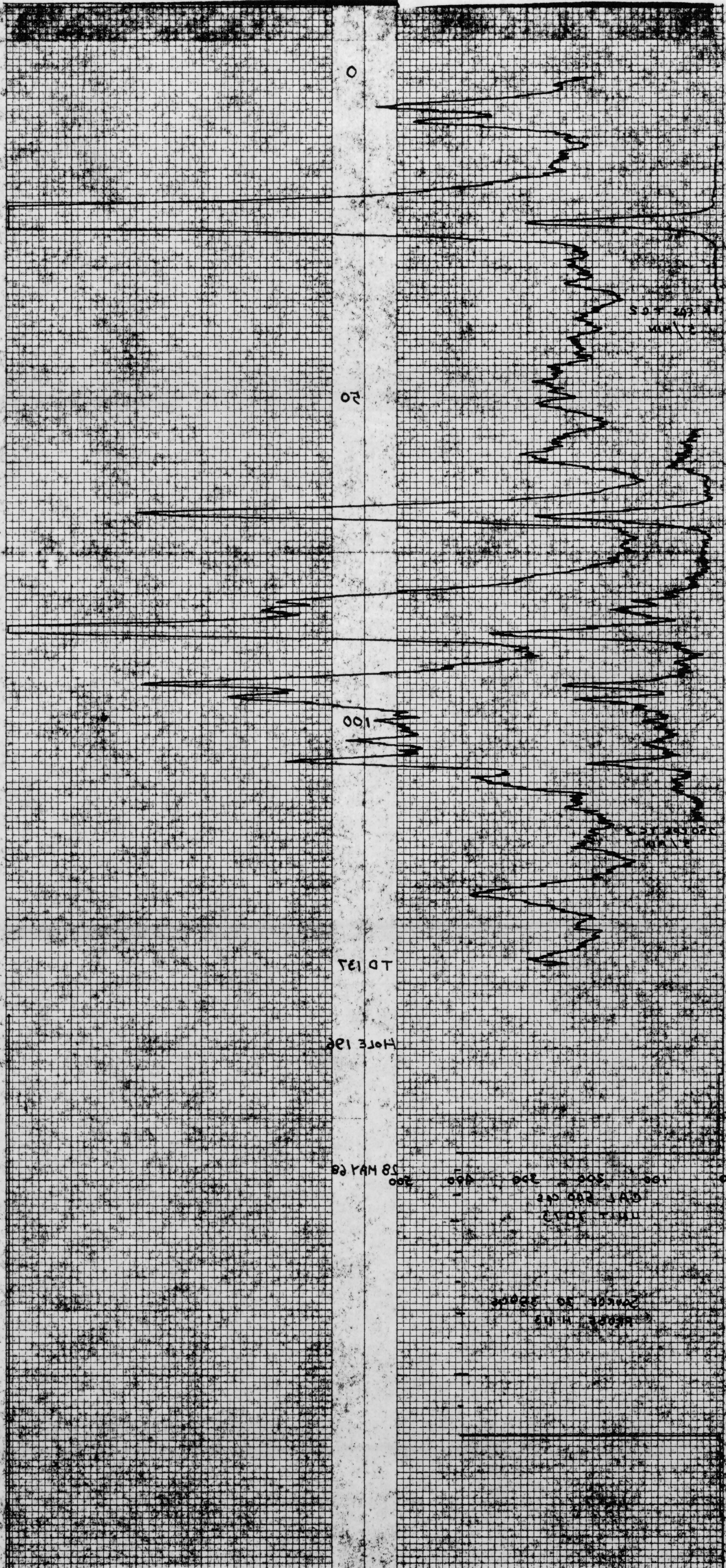
Q.H. 0:1
AM 196

1503607 N 643221E

HOLE NO. 196		DATE 28 MAY 68		CENTURY GEOPHYSICAL CORPORATION Tulsa, Oklahoma	
TWP. 12S		RANGE 18E		COUNTY YAVAPAI	
BORE HOLE FLUID 28		AREA ANDERSON MINE AIR		COMPANY GETTY OIL CO	
VISCOSITY		STATE ARIZONA		BORER NAME 196	
RESISTIVITY		COMPANY GETTY OIL CO		SECTION YAVAPAI	
UNIT NO. 2012		DATE 28 MAY 68		TOWNSHIP	
LOCATION NICKENBURG AREA		LOG MEASURED FROM SURFACE 1955'		RANGE	
TIME IN		TIME OUT		INITIAL RUN	
0.10		0.04		T. D. LOGGED	
0.04		0.04		GAMMA FULL SCALE	
0.04		0.04		TIME CONSTANT	
0.04		0.04		LOGGING SPEED	
0.04		0.04		CALIBRATION	
0.04		0.04		SOURCE NO. 30	
0.04		0.04		SOURCE VALUE 322 cgs	
0.04		0.04		PROBE SIZE 1/8	
0.04		0.04		REF. FULL SCALE	
0.04		0.04		2. H.	
0.04		0.04		WATER	
0.04		0.04		PROBE H113	

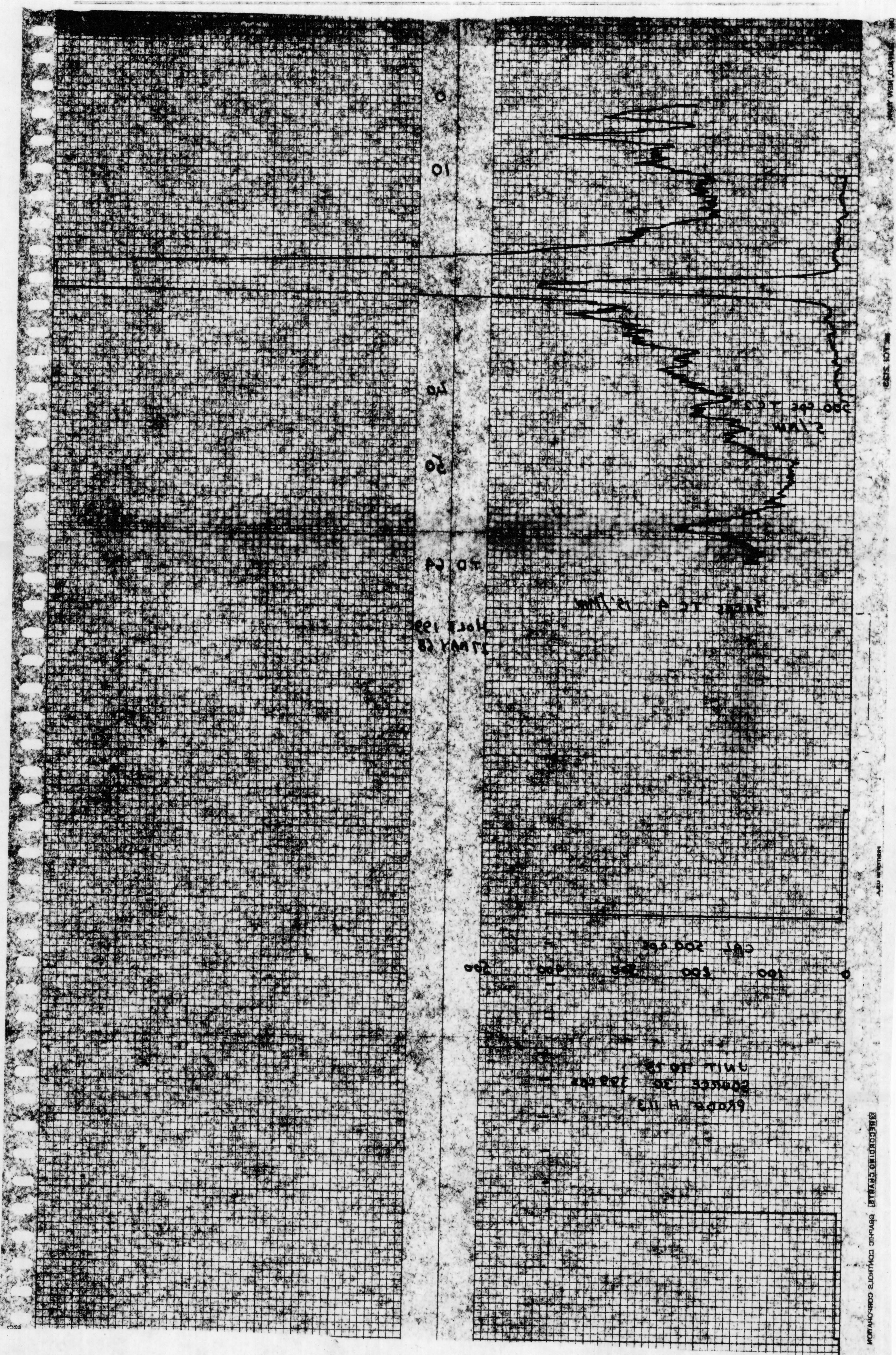
CALIPER
RESISTANCE
OHMS

SELF POTENTIAL
NATURAL GAMMA RAY
COUNTS PER SECOND



TOTAL				STANDY CHARGEABLE		Miles	
Ft.		Ft.		MILEAGE			
FROM		TOTAL		ROUNDTRIP			
n.		Ft.		Htz.	4.7		
SEC.		Ft./Min.		LOGGING	0.3		
T.C.		LOGGING SPEED		STANDY	1.3		
Cbr.		LOGGING		TIME OUT	1000		
SCALE		DRIVE		TIME IN	0042		
DATE 27 MAY 68							
UNIT NO. 7073							
OPERATOR STOKES							
STATE ARIZONA							
COUNTY YAVAPAI							
AREA ANDERSON MINE							
BORE HOLE FLUID AIR							
SEC.		RANGE		BIT SIZE 1 7/8"		CASING	
HOLE NO.		T.D. DRILLED		92		Ft.	

600E H113	Wavelength	
	Optical Density	
	Probe Size	1.8
	Probe No.	30
	Source Av. No.	20000

[illegible]

AM # 200

[illegible]

RESISTANCE
CALIPER

SELF POTENTIAL

