



CONTACT INFORMATION
Mining Records Curator
Arizona Geological Survey
3550 N. Central Ave, 2nd floor
Phoenix, AZ, 85012
602-771-1601
<http://www.azgs.az.gov>
inquiries@azgs.az.gov

The following file is part of the Anderson Mine Collection

ACCESS STATEMENT

These digitized collections are accessible for purposes of education and research. We have indicated what we know about copyright and rights of privacy, publicity, or trademark. Due to the nature of archival collections, we are not always able to identify this information. We are eager to hear from any rights owners, so that we may obtain accurate information. Upon request, we will remove material from public view while we address a rights issue.

CONSTRAINTS STATEMENT

The Arizona Geological Survey does not claim to control all rights for all materials in its collection. These rights include, but are not limited to: copyright, privacy rights, and cultural protection rights. The User hereby assumes all responsibility for obtaining any rights to use the material in excess of "fair use."

The Survey makes no intellectual property claims to the products created by individual authors in the manuscript collections, except when the author deeded those rights to the Survey or when those authors were employed by the State of Arizona and created intellectual products as a function of their official duties. The Survey does maintain property rights to the physical and digital representations of the works.

QUALITY STATEMENT

The Arizona Geological Survey is not responsible for the accuracy of the records, information, or opinions that may be contained in the files. The Survey collects, catalogs, and archives data on mineral properties regardless of its views of the veracity or accuracy of those data.

161

$$43,210 \div 77,200$$

2 MAY. 68

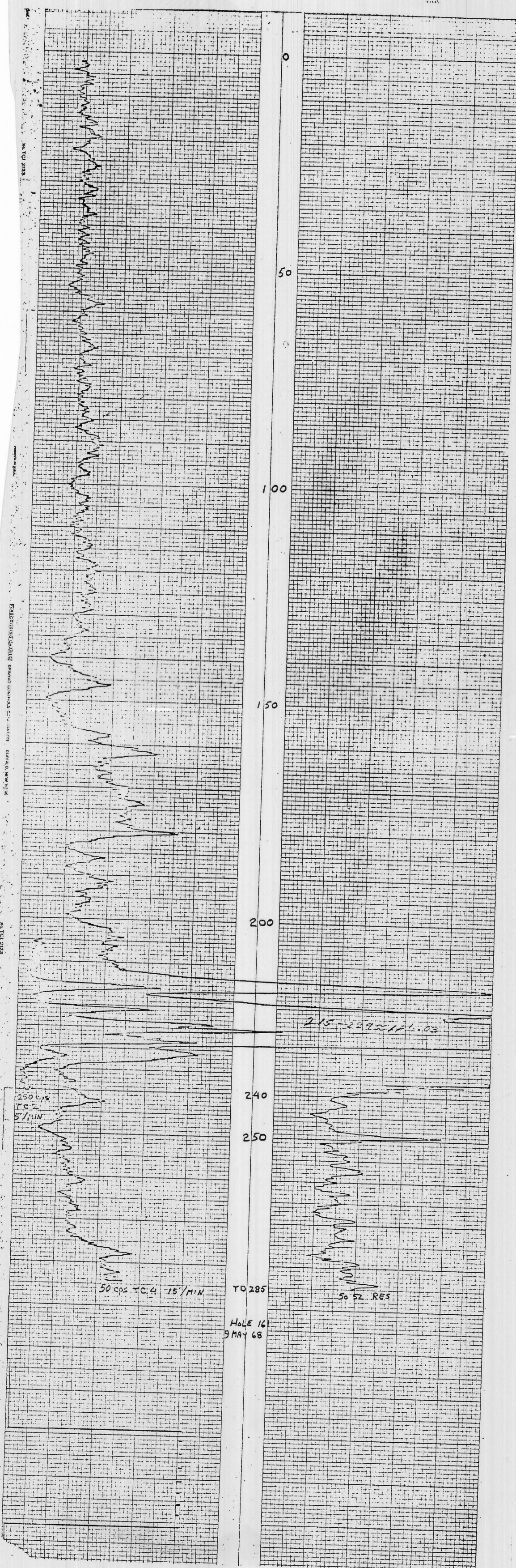
[illegible][illegible]

PROBE 11.11

SELF POTENTIAL
NATURAL GAMMA RAY

CALIPER -

RESISTANCE



42, 480 N: 77, 380 E
~~42, 480 N: 77, 380 E~~
 10 MAY 68

162

350

COMPANY
 HOLE NO. 162
 AREA
 COUNTY YAVAPAI
 SECTION TOWNSHIP RANGE
 INITIAL RUN
 SCALE
 GAMMA FULL SCALE 327
 TIME CONSTANT 50
 LOGGING SPEED 4
 LOGGING SPEED 15
 CALIBRATION
 SOURCE NO. 30
 PHORA SIZE 18
 RES FULL SCALE 50

162
 HOLE NO. 162
 AREA
 COUNTY YAVAPAI
 SECTION TOWNSHIP RANGE
 INITIAL RUN
 SCALE
 GAMMA FULL SCALE 327
 TIME CONSTANT 50
 LOGGING SPEED 4
 LOGGING SPEED 15
 CALIBRATION
 SOURCE NO. 30
 PHORA SIZE 18
 RES FULL SCALE 50

HOLE NO. 162
 AREA
 COUNTY YAVAPAI
 SECTION TOWNSHIP RANGE
 INITIAL RUN
 SCALE
 GAMMA FULL SCALE 327
 TIME CONSTANT 50
 LOGGING SPEED 4
 LOGGING SPEED 15
 CALIBRATION
 SOURCE NO. 30
 PHORA SIZE 18
 RES FULL SCALE 50

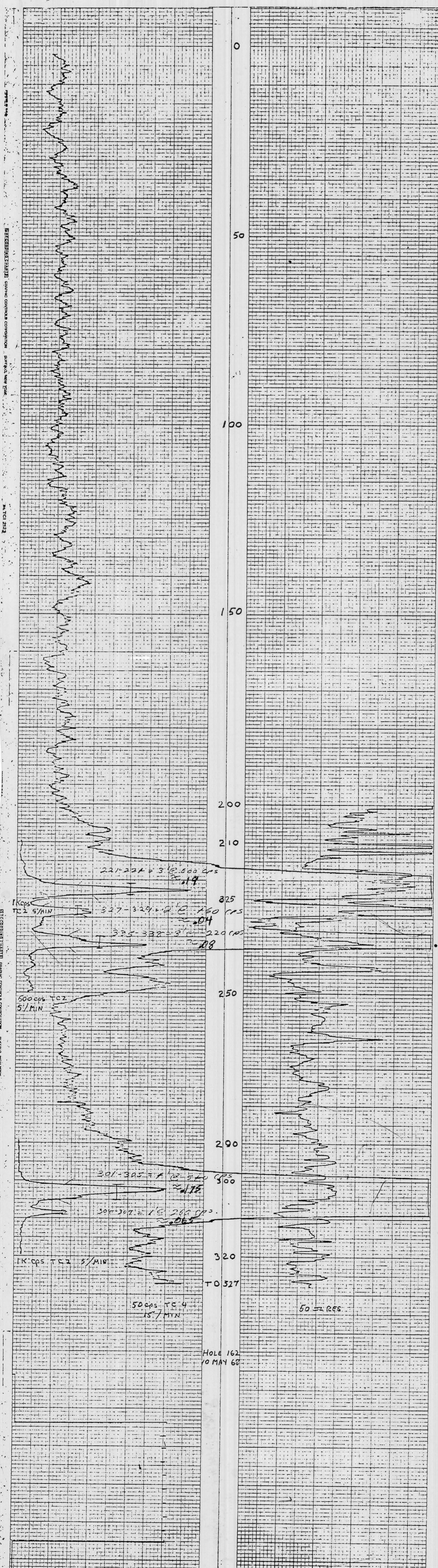
PROBE HITS

SELF POTENTIAL

CALIPER

NATURAL GAMMA RAY

RESISTANCE

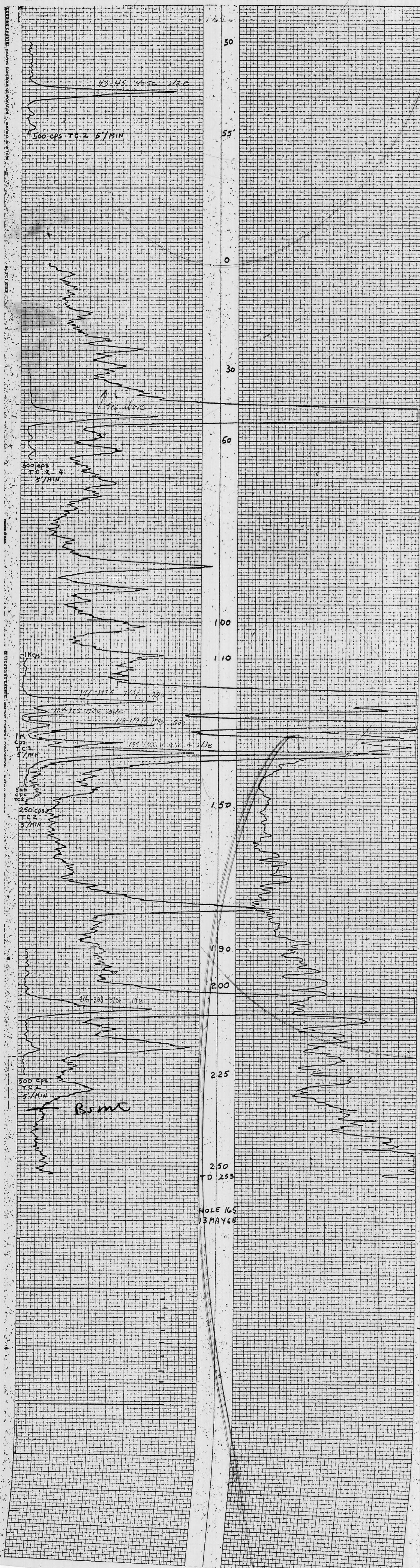


165 165

Century Geophysical Corporation				HOLE NO.		T B DRILLED		260	
LOG NO. 43610; 77,000				DATE 13 MAY 68		LOC. 1		CASHING	
COMPANY GETTY OIL CO				AREA ANDERSON MINE		HOLE NO. FLUID		AIR DRILLED	
BORE HOLE 165				COUNTY YAVAPAI		DENSITY		VISCOSITY	
AREA ANDERSON MINE				STATE ARIZONA		RESISTIVITY			
COMPANY GETTY OIL CO				DATE 13 MAY 68		LOCATION		STAKES	
COUNTY YAVAPAI				TOTAL FEET LOGGED 373		DIST. NO.		1073	
SECTION TOWNSHIP RANGE				LOG MEASURED FROM SURFACE		WICKENBURG		AKIZ	
INITIAL RUN				GAMMA READER		TIME IN		1545	
T D LOGGED				SCALE 500' IN 10' MIN		STANDBY		TIME OUT 1640	
GAMMA - FULL SCALE				LOGGING SPEED		LOGGING		TOTAL	
253' T.C. 500' IN 10' MIN				250' T.C. 500' IN 10' MIN		0.3' IN 10' MIN		1640	
50' FROM 2 SEC 5' IN 10' MIN				50' FROM 2 SEC 5' IN 10' MIN		0.9' IN 10' MIN			
TIME CONSTANT 4' TO 225'				150'		145'		1.2' IN 10' MIN	
LOGGING SPEED 15' IN 10' MIN				125'		130'			
CALIBRATION				TOTAL		TOTAL		UNRECOVERABLE STAKES	
500cps				35		25		15	
SOURCE NO 30				SCALE 1 K cps		SCALE 500 cps		BIT SIZE	
PROBE SIZE 1 1/8" I.C. 2				5' MIN		5' MIN		0-162 5/8"	
RIS - FULL SCALE 50' FROM 130'				FROM 55'		160-260		4 1/2"	
S.P. TO 110'				TO 30'					
PROBE H 115' TOTAL 20'				TOTAL 25'					

SELF POTENTIAL
NATURAL GAMMA RAY
COUNTS PER SECOND

CALIPER

RESISTANCE
Ciba 45 ✓

167

43,410:37000

DATE 7 MAY 64

HENDERSON HOLE

COMPAN

BETTY

BORE HOLE

167

AREA

HENDERSON HOLE

COUNTRY

YAGHAI

STATE

ALABAMA

SECTION

TOWN

RANGE

SECTION

SECTION

SECTION

SECTION

SECTION

SECTION

SECTION

T.D. LOGGED

263

263

2.5

2.5

2.5

2.5

GAMMA FULL SCALE

500

500

500

500

500

500

TIME CONSTANT

4

4

4

4

4

4

LOGGING SPEED

10

10

10

10

10

10

SOURCE NO

500

500

500

500

500

500

PHORE SIZE

30

30

30

30

30

30

RES FULL SCALE

30

30

30

30

30

30

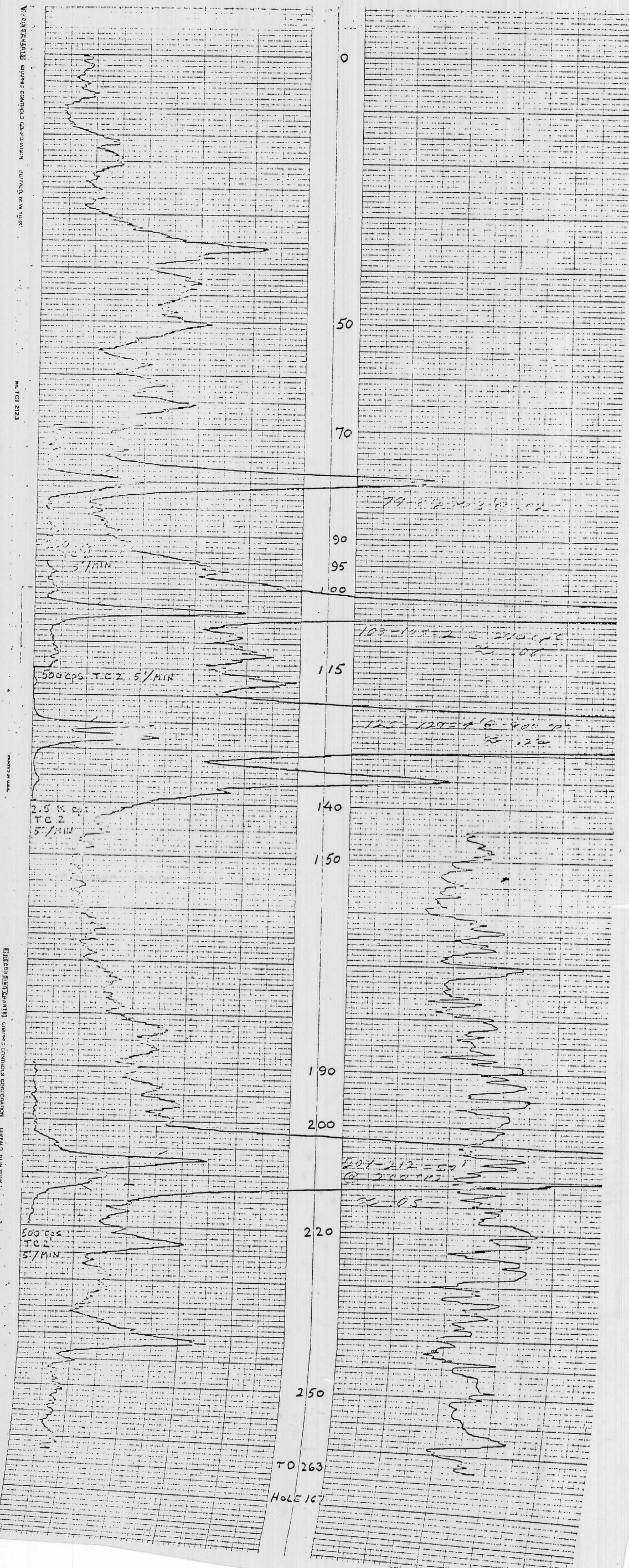
PHORES 1115 TOTAL 20

SELF POTENTIAL

CALIPER

NATURAL GAMMA RAY

RESISTANCE



168



43,190: 21,000.

2 14Y 65

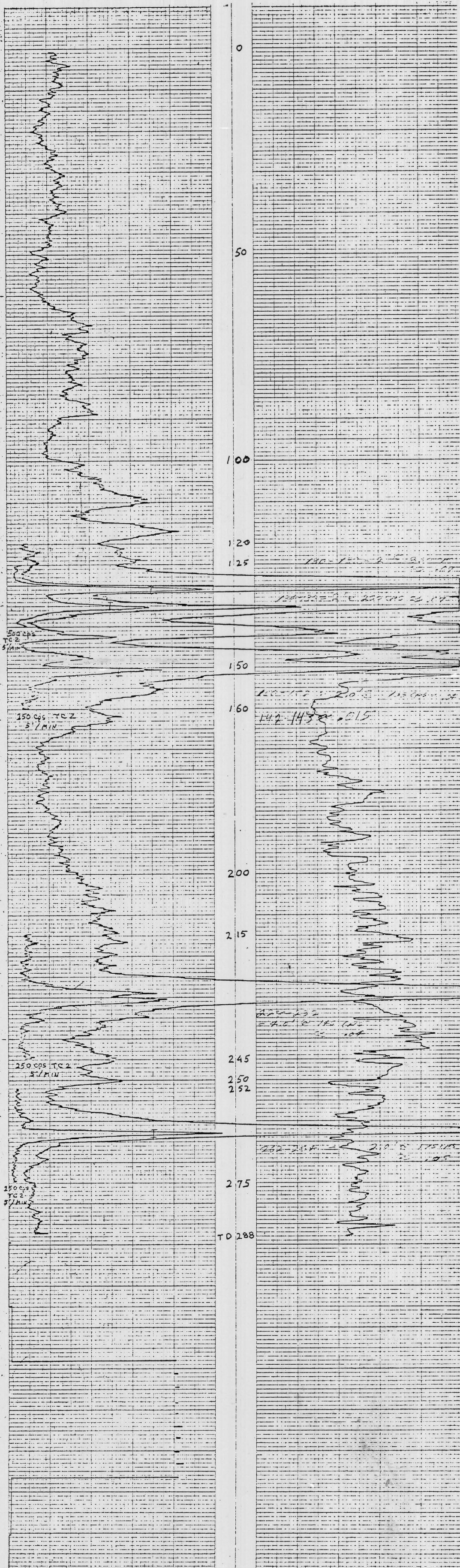
[illegible][illegible]

SELF POTENTIAL

CALIBER

NATURAL GAMMA RAY

RESISTANCE



Qty 0:1

1503402 N 045121 E

[illegible]

CALLIPER

SELF POTENTIAL

NATURAL GAMMA RAY
COUNTS PER SECOND

RESISTANCE

