



CONTACT INFORMATION
Mining Records Curator
Arizona Geological Survey
3550 N. Central Ave, 2nd floor
Phoenix, AZ, 85012
602-771-1601
<http://www.azgs.az.gov>
inquiries@azgs.az.gov

The following file is part of the Anderson Mine Collection

ACCESS STATEMENT

These digitized collections are accessible for purposes of education and research. We have indicated what we know about copyright and rights of privacy, publicity, or trademark. Due to the nature of archival collections, we are not always able to identify this information. We are eager to hear from any rights owners, so that we may obtain accurate information. Upon request, we will remove material from public view while we address a rights issue.

CONSTRAINTS STATEMENT

The Arizona Geological Survey does not claim to control all rights for all materials in its collection. These rights include, but are not limited to: copyright, privacy rights, and cultural protection rights. The User hereby assumes all responsibility for obtaining any rights to use the material in excess of "fair use."

The Survey makes no intellectual property claims to the products created by individual authors in the manuscript collections, except when the author deeded those rights to the Survey or when those authors were employed by the State of Arizona and created intellectual products as a function of their official duties. The Survey does maintain property rights to the physical and digital representations of the works.

QUALITY STATEMENT

The Arizona Geological Survey is not responsible for the accuracy of the records, information, or opinions that may be contained in the files. The Survey collects, catalogs, and archives data on mineral properties regardless of its views of the veracity or accuracy of those data.

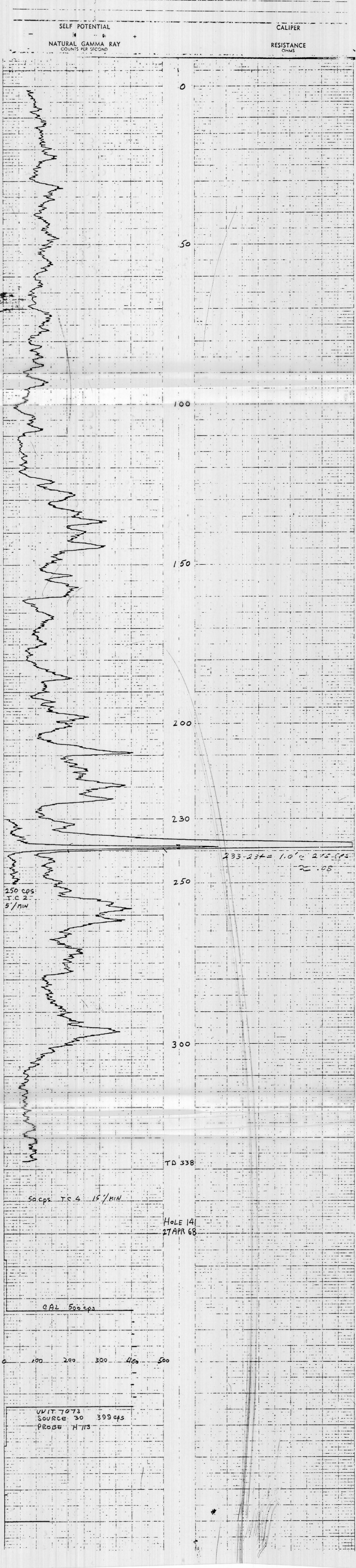


Century Geophysical Corporation
Field Division

68
141

HOLE NO. 141		T.D. DRILLED 340	
T.C. 141		Casing 4.3	
DATE 27 APR 68		AREA ANDERSON MINE	
COMPANY GETTY OIL CO.		COUNTY YAVAPAI	
STATE ARIZONA		RESISTIVITY	
OPERATOR STOKES		UNIT NO. 7073	
DATE 27 APR 68		LOCATION WICKENBURG, ARIZ	
TOTAL FEET LOGGED 358		DEPTH 3.0	
TIME IN 08:35		TIME OUT 09:15	
LOGGING SPEED 0.7		TOTAL 4.0	
CALIBRATION		STANDBY	
SOURCE NO. 30		STURCH VALUE 399 cps	
PROBE SIZE 1.5		RES. FULL SCALE	
E.P.		E.P.	

PROBES H 113

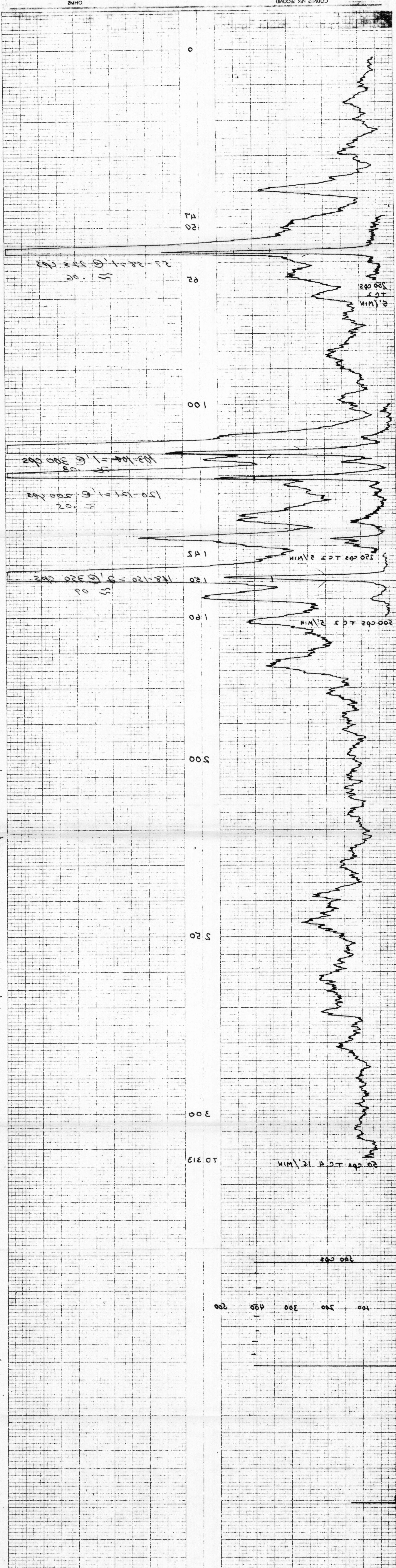


AM # 143

[illegible]

RESISTANCE
CALIPER

SELF POTENTIAL



144

144

T.D. DRILLED

152

OGC

COMPANY

GETTY OIL CO.

25 APR 68

ANDERSON MINE

AIR

BONE HOLE

144

YAVAPAI

RESISTIVITY

AREA

ANDERSON MINE

ARIZONA

OPERATION

STOKES

COUNTY

YAVAPAI

ARIZONA

GETTY OIL CO.

UNIT NO

7073

SECTION

TOWNSHIP

RANGE

LOG MEASURED FROM

25 APR 68

LOCATION

WICKENBURG, ARIZ

INITIAL RUN

SURFACE

TOTAL FEET LOGGED

152

DRIVE

TIME IN

14 20

T.D. LOGGED

152

SCALE

SCALE

SCALE

STANDBY

1.8

TIME OUT

14 40

GAMMA FULL SCALE

500

T.C.

LOGGING SPEED

T.C.

LOGGING SPEED

T.C.

LOGGING SPEED

LOGGING

TOTAL

0.6

TIME CONSTANT

4

FROM

TO

FROM

TO

FROM

TO

TOTAL

2.4

LOGGING SPEED

15

TOTAL

TOTAL

TOTAL

TOTAL

TOTAL

TOTAL

TOTAL

TOTAL

SOURCE

500 cps

SOURCE VALUE

30

399 cps

PROBE SIZE

1 3/8

RES. FULL SCALE

PROBE H 113

SELF POTENTIAL

CALIPER

NATURAL GAMMA RAY
COUNTS PER SECONDRESISTANCE
OHMS

PULSED GAMMA RAY SOURCE - LITHIUM-6 - 1000000 CPS

NO. TCI 2123

428

7073

50.0 cps TC 4 15'/MIN

150
TO 152HOLE 144
25 APR 68

CAL 500 cps

0 100 200 300 400 500

UNIT 7073
SOURCE 30 399 cps
PROBE H 113

PULSED GAMMA RAY SOURCE - LITHIUM-6 - 1000000 CPS

NO. TCI 2123

428

(X2)

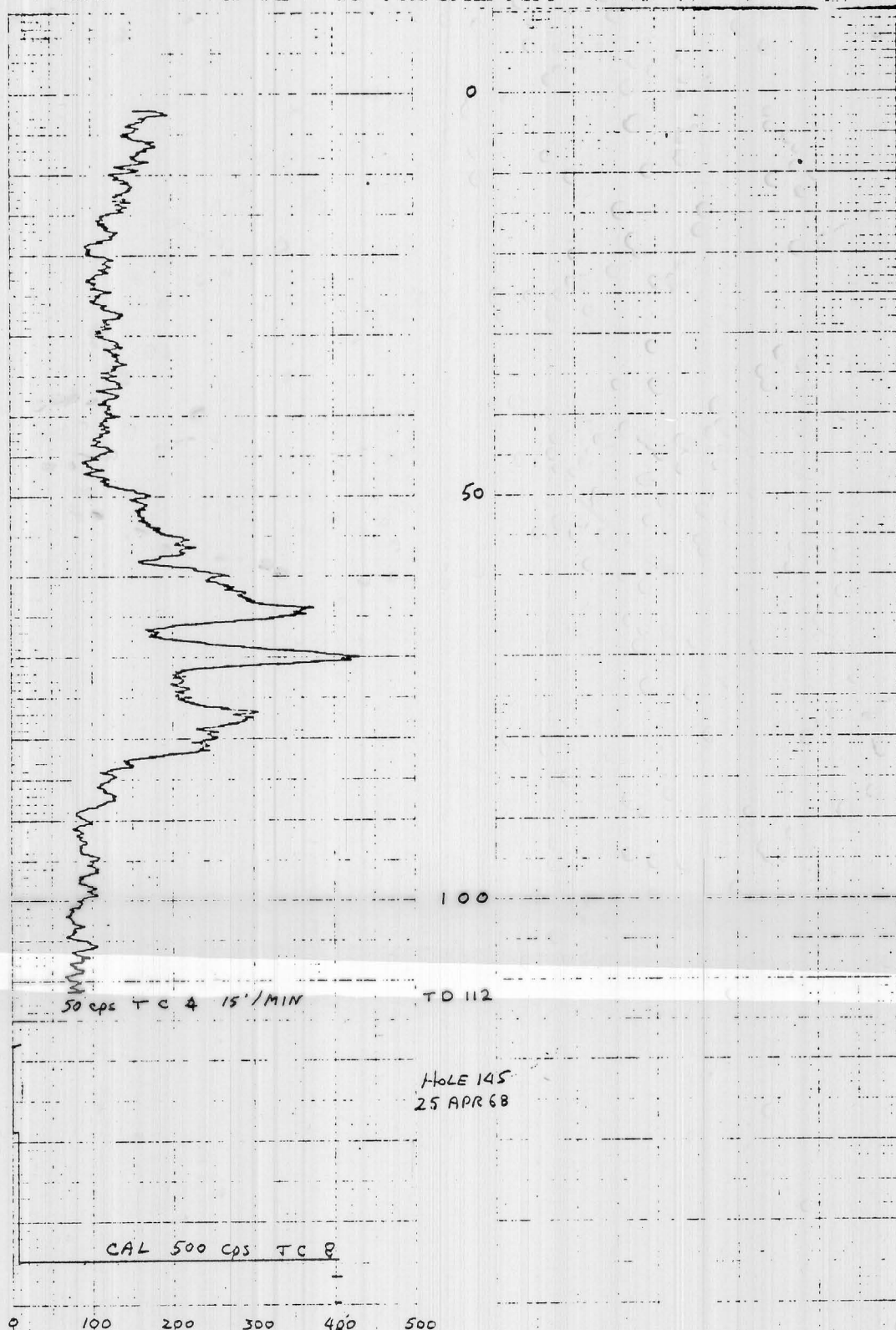
25 APR 68
ANDERSON MINE
YAVAPAI
ARIZONA
GETTY OIL CO
15 APR 68
SURFACE
112
WICKENBURG, ARIZ
3.0 mi 1030
1.0 mi 1045
0.3 mi
4.3 mi
500 cps
30
18
18

PROBE H113

SELF-POTENTIAL

CALIPER

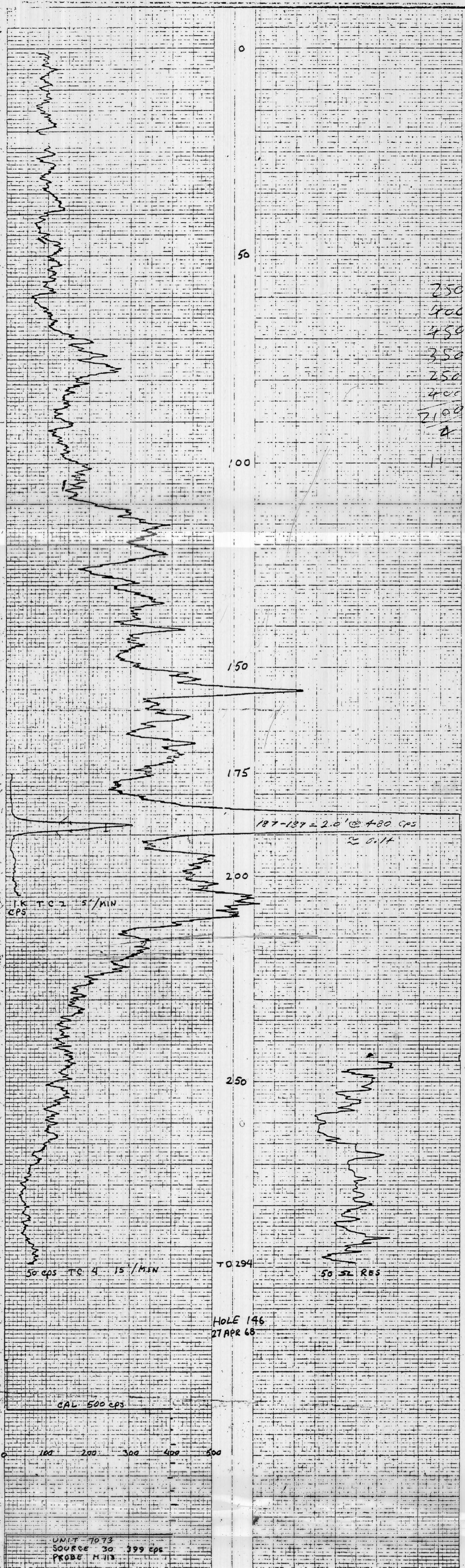
NATURAL GAMMA RAY
COUNTS PER SECOND

RESISTANCE
CHMS

HOLE 145
25 APR 68

UNIT 7073
SOURCE 30 399 cps
PROBE M 113

SELF POTENTIAL	CALIPER
NATURAL GAMMA RAY COUNTS PER SECOND	RESISTANCE OHMS



147

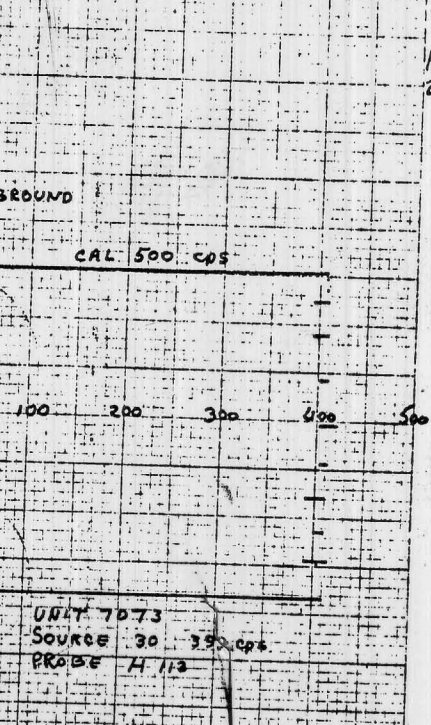
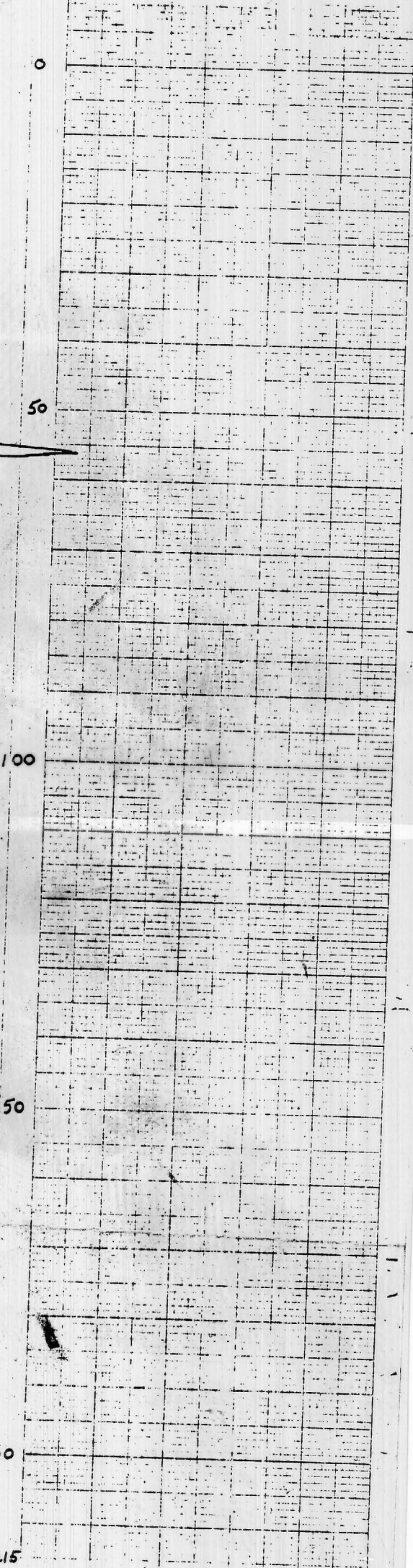
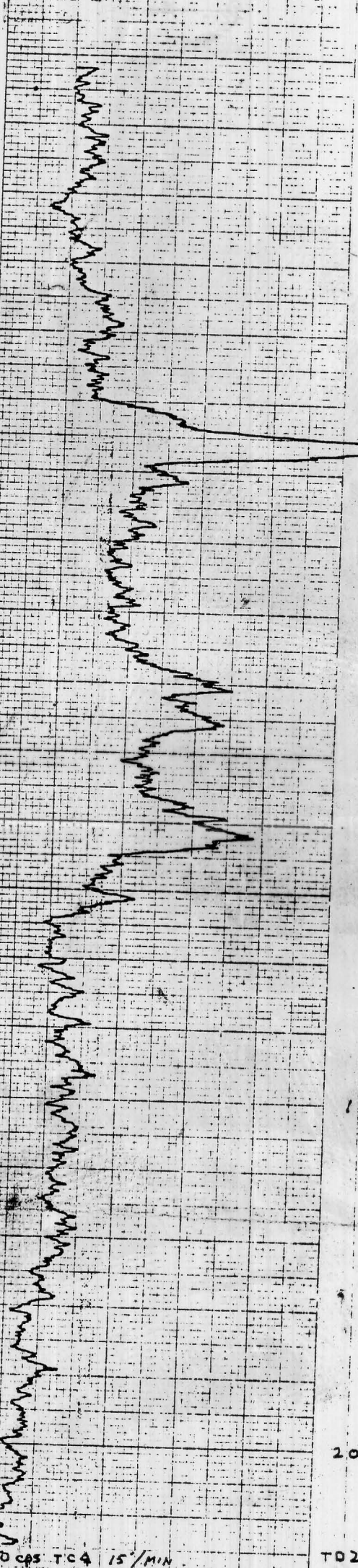


COMPANY
GETTY OIL CO
BORE HOLE
141
AREA
ANDERSON MINE
COUNTY
YAVAPAI
SECTION
TOWNSHIP
RANGE
ARIZONA
SURFACE
DATE
28 APR 68
LOG NO
147
TIME
12:30
AREA
ANDERSON MINE
COUNTY
YAVAPAI
STATE
ARIZONA
LOG NO
147
DATE
28 APR 68
TOTAL FEET LOGGED
215
LOG NO
147
TIME
12:30
AREA
ANDERSON MINE
COUNTY
YAVAPAI
STATE
ARIZONA
LOG NO
147
DATE
28 APR 68
TOTAL FEET LOGGED
215

PROBE H 113

SELF POTENTIAL
NATURAL GAMMA RAY
COUNTS PER SECOND

CALIPER
RESISTANCE



HOLE 147
28 APR 68

UNIT 7073
SOURCE 30 399 cps
PROBE H 113

MICROSCOPIC ELECTRONIC CONTROLS CORPORATION · BUFFALO, NEW YORK

Century Geophysical Corporation

149

29 APR 68

COMPANY: GETTY OIL CO

BORE HOLE: 149

AREA: ANDERSON MINE

COUNTY: YAVAPAI

SECTION: TOWNSHIP

STATE: ARIZONA

LOG MEASURED IN: SURFACE

INITIAL RUN

LOG MEASURED IN: 295

GAMMA FULL SCALE: 50

TIME CONSTANT: 4

LOGGING SPEED: 15

CAL NATION: 500

SOURCE NO: 30, 340 cps

PROBE SIZE: 1 1/8

RES FULL SCALE: 50

PROBE H113

149

295

ANDERSON MINE FRESH WATER CEMENT

YAVAPAI

ARIZONA

GETTY OIL CO

29 APR 68

TOTAL FEET LOGGED: 295

LOCATION: WICKENBURG ARIZ

DATE: 1645

TIME IN: 1115

STANDBY: 0.5

TOTAL: 1.5

LOGGING SPEED: 15

CAL NATION: 500

SOURCE NO: 30, 340 cps

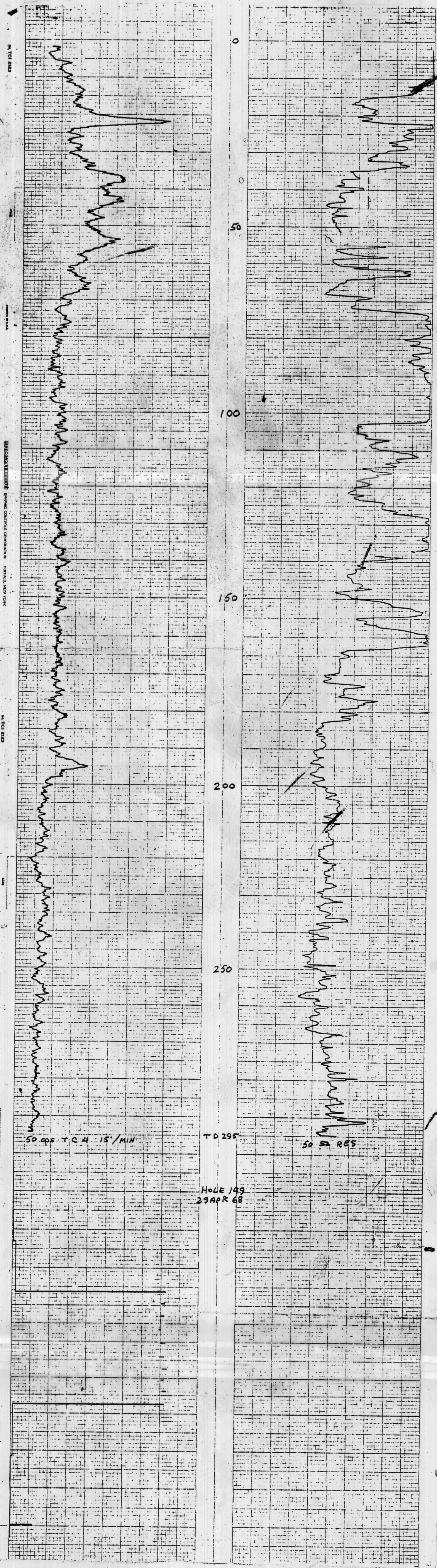
PROBE SIZE: 1 1/8

RES FULL SCALE: 50

PROBE H113

SELF POTENTIAL
NATURAL GAMMA RAY

CALIPER
RESISTANCE





150

150

4000

30 APR 68

ANDERSON MINE

COMPANY
GETTY OIL CO
HOLE NO
150
AREA
ANDERSON MINE
COUNTRY
YAVAPAI
SECTION

DATE
30 APR 68
TOTAL HOLE DEPTH
422
UNIT NO
7073
STONES

STATE
ARIZONA
SURFACE

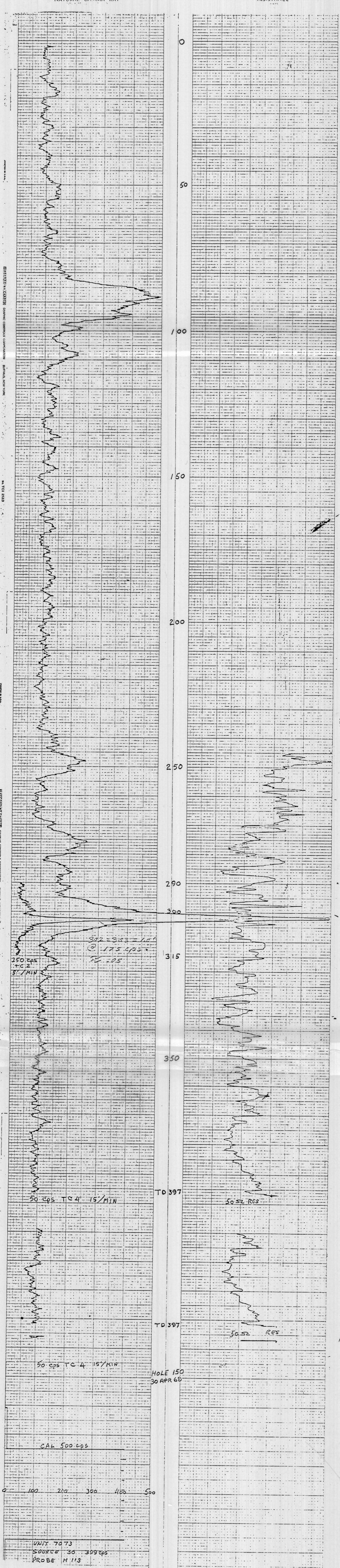
TIME CONSTANT
4
ORIGIN SPEED
15
CALIBRATION
500 cps
SOURCE NO
30 399 cps
PROBE SIZE
1.8
RES FULL SCALE
50
S.P.

TIME CONSTANT
4
ORIGIN SPEED
15
CALIBRATION
500 cps
SOURCE NO
30 399 cps
PROBE SIZE
1.8
RES FULL SCALE
50
S.P.

PROBE H 113

SELF POTENTIAL
NATURAL GAMMA RAY

CALIPER
RESISTANCE



UNIT 7073
SOURCE 30 399 cps
PROBE H 113