



CONTACT INFORMATION  
Mining Records Curator  
Arizona Geological Survey  
3550 N. Central Ave, 2nd floor  
Phoenix, AZ, 85012  
602-771-1601  
<http://www.azgs.az.gov>  
[inquiries@azgs.az.gov](mailto:inquiries@azgs.az.gov)

The following file is part of the Anderson Mine Collection

### **ACCESS STATEMENT**

These digitized collections are accessible for purposes of education and research. We have indicated what we know about copyright and rights of privacy, publicity, or trademark. Due to the nature of archival collections, we are not always able to identify this information. We are eager to hear from any rights owners, so that we may obtain accurate information. Upon request, we will remove material from public view while we address a rights issue.

### **CONSTRAINTS STATEMENT**

The Arizona Geological Survey does not claim to control all rights for all materials in its collection. These rights include, but are not limited to: copyright, privacy rights, and cultural protection rights. The User hereby assumes all responsibility for obtaining any rights to use the material in excess of "fair use."

The Survey makes no intellectual property claims to the products created by individual authors in the manuscript collections, except when the author deeded those rights to the Survey or when those authors were employed by the State of Arizona and created intellectual products as a function of their official duties. The Survey does maintain property rights to the physical and digital representations of the works.

### **QUALITY STATEMENT**

The Arizona Geological Survey is not responsible for the accuracy of the records, information, or opinions that may be contained in the files. The Survey collects, catalogs, and archives data on mineral properties regardless of its views of the veracity or accuracy of those data.

123

Century Geophysical Corporation  
Tulsa, Oklahoma



MOLE NO. 123 T. D. DRILLED 170  
SEC. 11 TWP. 11N R. 12E  
AREA ANDERSON MINE BIT SIZE 1 1/8" CASING 1 1/2"  
COUNTY YAVAPAI BORE HOLE FLUID AIR  
STATE ARIZONA DENSITY  
COMPANY GETTY OIL CO OPERATOR STOKES  
DATE 4 APR 68 UNIT NO. 7073  
RESISTIVITY  
SECTION TOWNSHIP RANGE LOG MEASURED FROM SURFACE 1836 TOTAL FEET LOGGED 277 LOCATION WICKENBURG, ARIZ

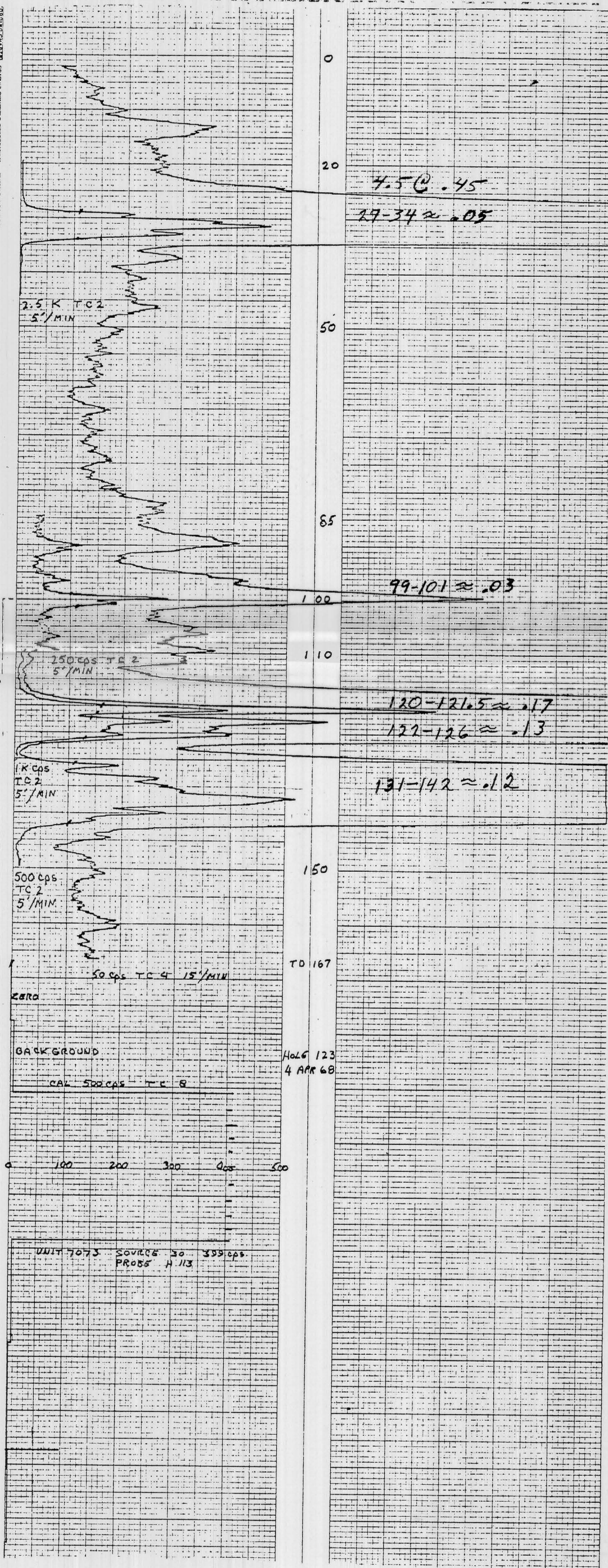
T. D. LOGGED		SCALE		SCALE		SCALE		STANDBY		TIME IN	
INITIAL RUN	SCALE	T. C.	LOGGING SPEED	T. C.	LOGGING SPEED	T. C.	LOGGING SPEED	3.0 hr	12 20	TIME OUT	TIME
167	500 cps	2	5' / MIN	1K cps	5' / MIN	250 cps	5' / MIN	3.3 hr	13 30	LOGGING	1.2 hr
50	500 cps	2	5' / MIN	1K cps	5' / MIN	250 cps	5' / MIN	TOTAL		7.5 hr	
2	500 cps	2	5' / MIN	1K cps	5' / MIN	250 cps	5' / MIN	ROUNDTrip MILEAGE		110	
15	500 cps	2	5' / MIN	1K cps	5' / MIN	250 cps	5' / MIN	CHARGEABLE STANDBY		25	
CALIBRATION		TOTAL		TOTAL		TOTAL		TOTAL		TOTAL	
500	500 cps	40	40	20	20	25	25				
SOURCE NO. 30	SOURCE VALUE 399 cps	SCALE 2.5 K cps									
PROBE SIZE 1 3/8"		TC 2 5' / MIN									
RES. FULL SCALE 1 3/8"		FROM 45'								BIT SIZE	
		TO 20'								0-20' 5 1/8"	
		TOTAL 25'								20-170' 4 3/4"	
PROBE H.113											

SELF POTENTIAL

CALIPER

NATURAL GAMMA RAY  
COUNTS PER SECOND

RESISTANCE  
OHMS



GRAPHIC CONTROLS CORPORATION BUFFALO, NEW YORK  
NO. TCI 2123

124

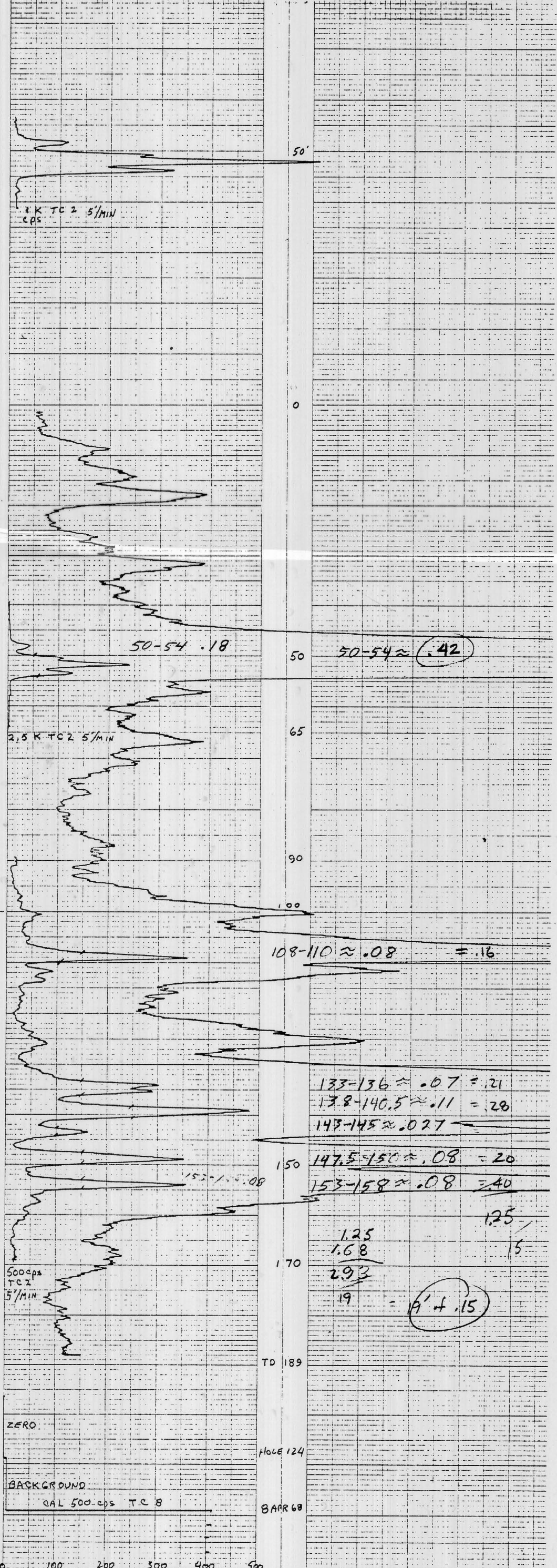


HOLE NO. 124  
 SEC. 124  
 TWP. 124  
 RANGE. 190  
 BIT SIZE. 5 7/8  
 CASING. 4 3/4  
 DATE. 8 APR 68  
 AREA. ANDERSON MINE  
 COUNTY. YAVAPAI  
 STATE. ARIZONA  
 COMPANY. GUTTY OIL CO.  
 DATE. 8 APR 68  
 TOTAL FEET LOGGED. 294  
 BORE HOLE FLUID. AIR  
 DENSITY. 7073  
 OPERATOR. STOKES  
 UNIT NO. 7073  
 LOCATION. WICKENBURG ARIZ.  
 DRIVE. 3.0 mi  
 TIME IN. 14:05  
 TIME OUT. 14:55  
 LOGGING. 0.8 hr  
 TOTAL. 8.9 hr  
 ROUNDTRIP. 25 mi  
 CHARGEABLE. 25 mi  
 BIT SIZE. 0-20' 5 7/8, 20-190' 4 3/4

43480N 7733E  
 COMPANY. GUTTY OIL CO.  
 BORE HOLE. 124  
 AREA. ANDERSON MINE  
 COUNTY. YAVAPAI  
 STATE. ARIZONA  
 SECTION. SURFACE  
 DATE. 8 APR 68  
 TOTAL FEET LOGGED. 294  
 T.D. LOGGED. 189  
 SCALE. 500  
 GAMMA FULL SCALE. 500  
 TIME CONSTANT. 4  
 LOGGING SPEED. 15  
 SOURCE NO. 30  
 PROBE SIZE. 1 3/8  
 RES. FULL CALL. 1 3/8

PROBE H 113

SELF POTENTIAL  
 NATURAL GAMMA RAY  
 CALIPER  
 RESISTANCE OHMS



0 100 200 300 400 500

UNIT 7073 SOURCE #30 399 cps  
 PROBE H 113

RECORDED ON CHARTS BY GEOPHYSICAL CORPORATION BUFFALO, NEW YORK  
 MA TC1 2123

125

Century Geophysical Corporation  
Tulsa, Oklahoma



44,420:77180

DATE 10 APR 68

HOLE NO 125

WIT SIZE 5 8

CASING 85

COMPANY GETTY OIL CO

AREA ANDERSON MINE

COUNTY YAVAPAI

STATE ARIZONA

LOG MEASURED FROM SURFACE

OPERATOR STONES

UNIT NO 1073

LOCATION WICKENBURG, ARIZ

DRIVE

TIME IN 16 25

TIME OUT 16 35

STANDBY 0.6

LOGGING 0.2

TOTAL 0.8

ROUNDTRIP MILEAGE

RECHARGEABLE STANDBY

MIN

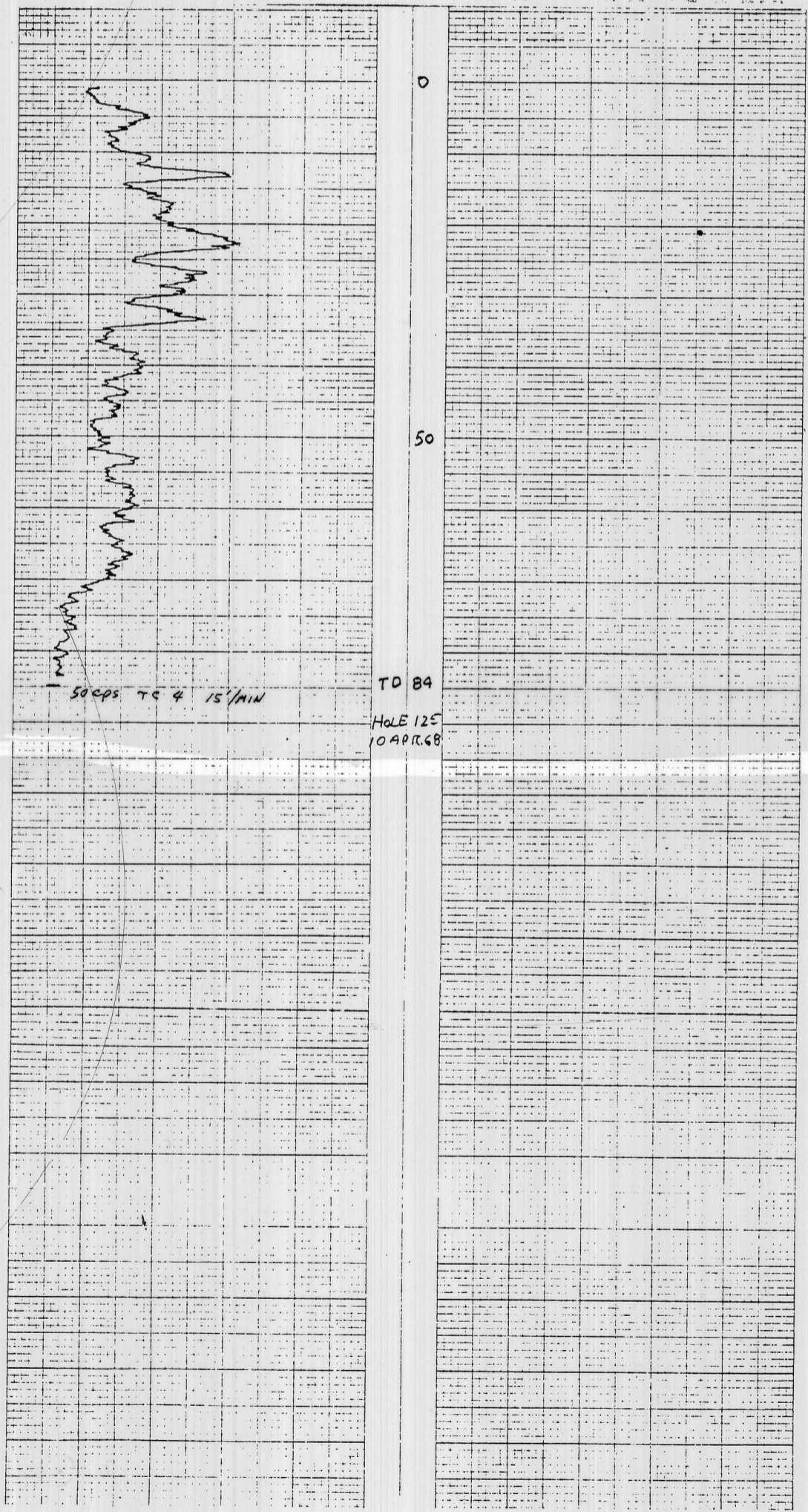
PROBE H-113

SELF POTENTIAL

NATURAL GAMMA RAY  
COUNTS PER SECOND

CALIPER

RESISTANCE  
OHMS



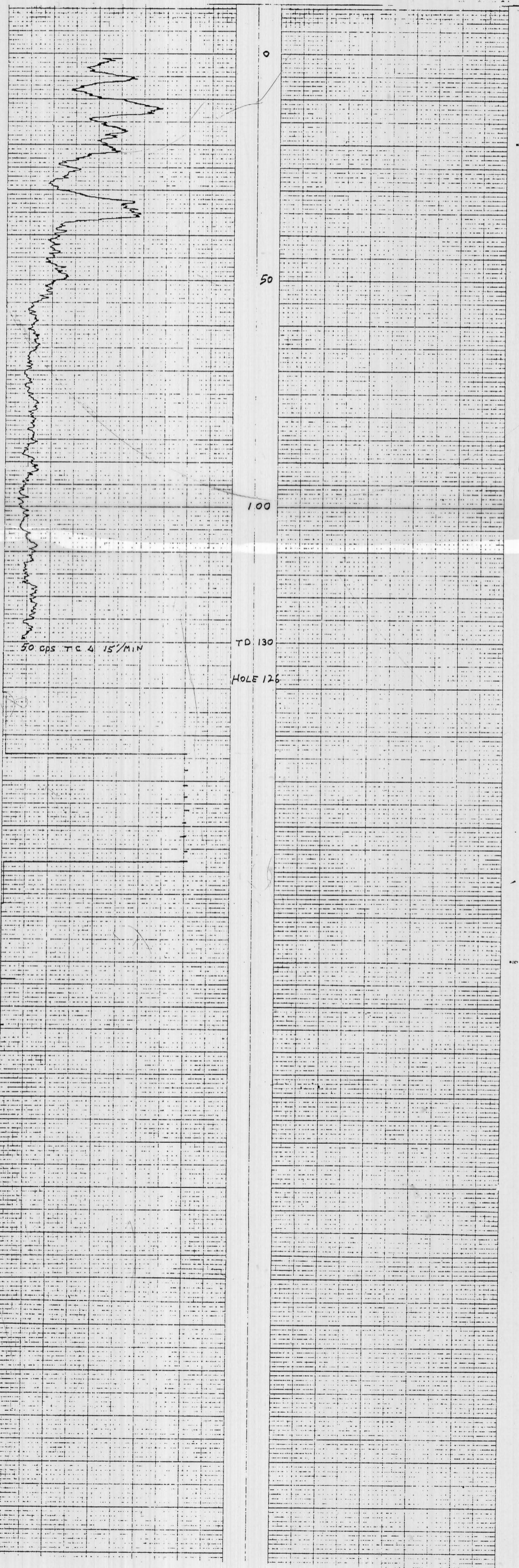
126

133

HOLE NO. 126  
 TWP. RANGE 126  
 N. D. DRILLED 130  
 BIT SIZE 5 7/8 IN.  
 LEASING AIR  
 DATE 9 APR. 68  
 AREA ANDERSON MINE  
 COUNTY YAVAPAI  
 STATE ARIZONA  
 LOG MEASURED FROM SURFACE 1857  
 COMPANY GETTY OIL CO.  
 DATE 9 APR 68  
 TOTAL FEET LOGGED 130  
 OPERATOR STOKES  
 UNIT NO. 7073  
 LOCATION WICKENBURG ARIZ  
 DRIVE  
 TIME IN 3.0 HRS  
 TIME OUT 1455  
 LOGGING 1.9 HRS  
 TOTAL 5.1 HRS  
 CHARGEABLE 1.9 HRS  
 STANDBY 3.0 HRS  
 ROUNDTRIP MESSAGE  
 CHARGEABLE STANDBY

44,400N 78000E  
 COMPANY GETTY OIL CO  
 HOLE NO. 126  
 AREA ANDERSON MINE  
 COUNTY YAVAPAI  
 STATE ARIZONA  
 LOG MEASURED FROM SURFACE 1857  
 DATE 9 APR. 68  
 TOTAL FEET LOGGED 130  
 CALIBRATION 500 cps  
 SOURCE NO. 30 SOURCE VALUE 399 cps  
 PROBE SIZE 1 3/8  
 RES. FULL SCALE  
 S.P.  
 PROBE H 113

SELF POTENTIAL  
 NATURAL GAMMA RAY  
 COUNTS PER SECOND  
 CALIPER  
 RESISTANCE  
 OHMS



Century Geophysical Corporation  
Tulsa Oklahoma



HOLE NO.	127	T. D. DRILLED	264
SEC.	YAVAPAI	BIT SIZE	4 3/4
TWP.	7S	ROCK HOLE FLUID	AIR
RANGE	7E	DENSITY	
DATE	10 APR 68	VISCOSITY	
AREA	ANDERSON MINE	RESISTIVITY	
COMPANY	GETTY OIL CO.	OPERATOR	STOKES
STATE	ARIZONA	UNIT NO.	7033
LOG MEASURED FROM	SURFACE	LOCATION	ANDERSON MINE
DATE	10 APR 68	LOGGERS	W. J. JUCKEUBERG
TOTAL FEET LOGGED	1964	STANDBY	15 10
		LOGGING	2.8
		TOTAL	15 50
		LOGGING SPEED	0.7
		FEET	3.5
		ROUNDTRIP	
		MILEAGE	
		CHARGABLE	
		STANDBY	

44 1/2" N	78" S	DATE	10 APR 68
COMPANY	GETTY OIL CO.	AREA	ANDERSON MINE
BORE HOLE	127	COUNTY	YAVAPAI
STATE	ARIZONA	LOG MEASURED FROM	SURFACE
LOG MEASURED FROM	SURFACE	DATE	10 APR 68
TOTAL FEET LOGGED	1964	LOGGERS	W. J. JUCKEUBERG

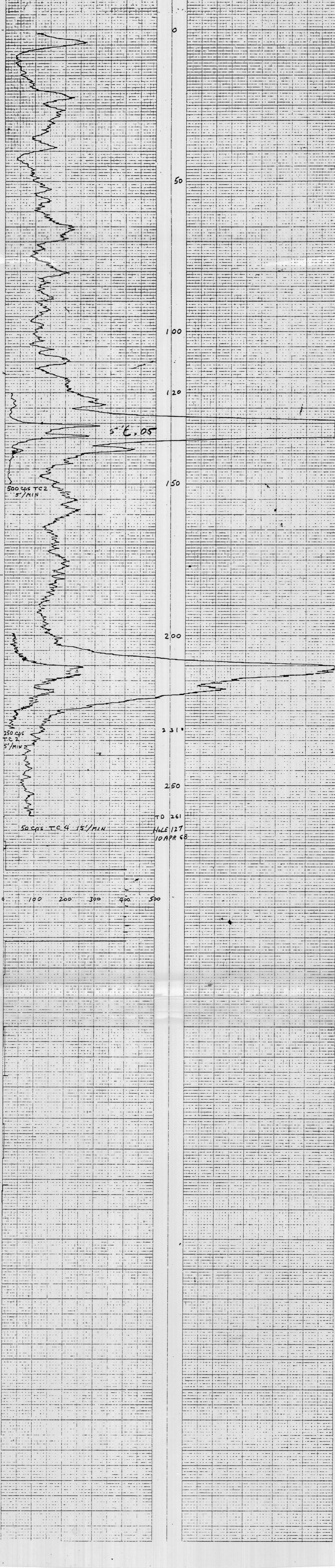
T. D. LOGGED	261	SCALE	250	SCALE	500	SCALE		STANDBY	15 10
GAMMA FULL SCALE	50	T. C.	2	LOGGING SPEED	5	T. C.	2	LOGGING	2.8
TIME CONSTANT	4	FROM	231	FROM	150	FROM	120	TOTAL	15 50
LOGGING SPEED	15	TO	200	TO	120	TO		FEET	3.5
CALIBRATION	500 cps	TOTAL	31	TOTAL	30	TOTAL		ROUNDTRIP	
SOURCE NO.	30							MILEAGE	
BIURST VALUE	399 cps							CHARGABLE	
BIURST	1 B							STANDBY	

BIT SIZE  
0-20 5/8  
20-264 4 3/4

PROBE H 113

SELF POTENTIAL  
NATURAL GAMMA RAY  
COUNTS PER SECOND

CALIPER  
RESISTANCE  
OHMS



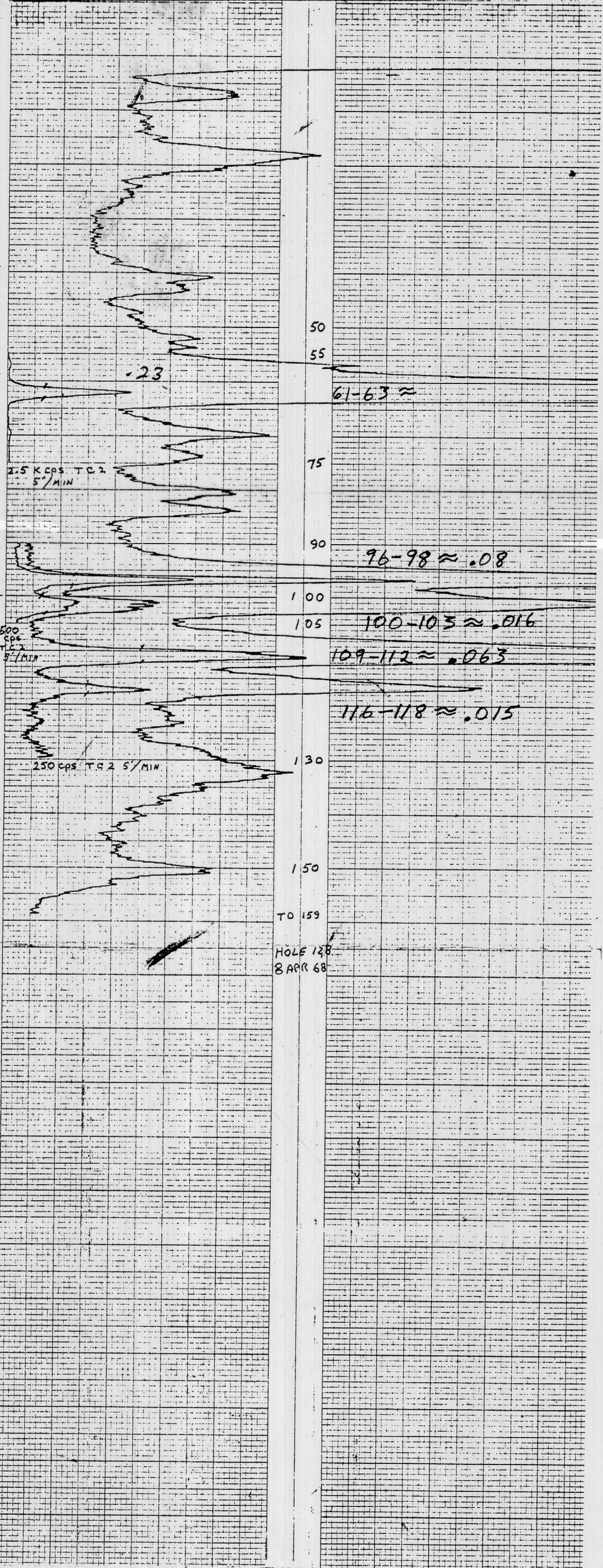
500 cps TC 2 5'/MIN  
 250 cps TC 2 5'/MIN  
 50 cps TC 4 15'/MIN

TD 261  
HOLE 127  
10 APR 68

128

43600N T80D0E DATE 8 APR 68  
COMPANY GETTY OIL CO BORE HOLE 128  
AREA ANDERSON MINE COUNTY YAVAPAI STATE ARIZONA LOG MEASURED FROM SURFACE 1835  
SECTION TOWNSHIP RANGE LOG MEASURED FROM SURFACE 1835 TOTAL FEET LOGGED 234  
INITIAL RUN  
LOGGED 159 ft SCALE 250 cps LOGGING SPEED 5 ft/min FROM 2 sec TO 130 ft TOTAL 40  
GAMMA (FULL SCALE) 500 cps SCALE 2.5K cps LOGGING SPEED 5 ft/min FROM 2 sec TO 75 ft TOTAL 15  
TIME CONSTANT 4 sec LOGGING SPEED 15 ft/min TO 90 ft TOTAL 20  
CALIBRATION 500 cps SOURCE VALUE 30 399 cps  
PROBE SIZE 1 3/8 in  
RES (FULL SCALE) S.P.  
PROBE H113

SELF POTENTIAL NATURAL GAMMA RAY COUNTS PER SECOND CALIPER RESISTANCE OHMS



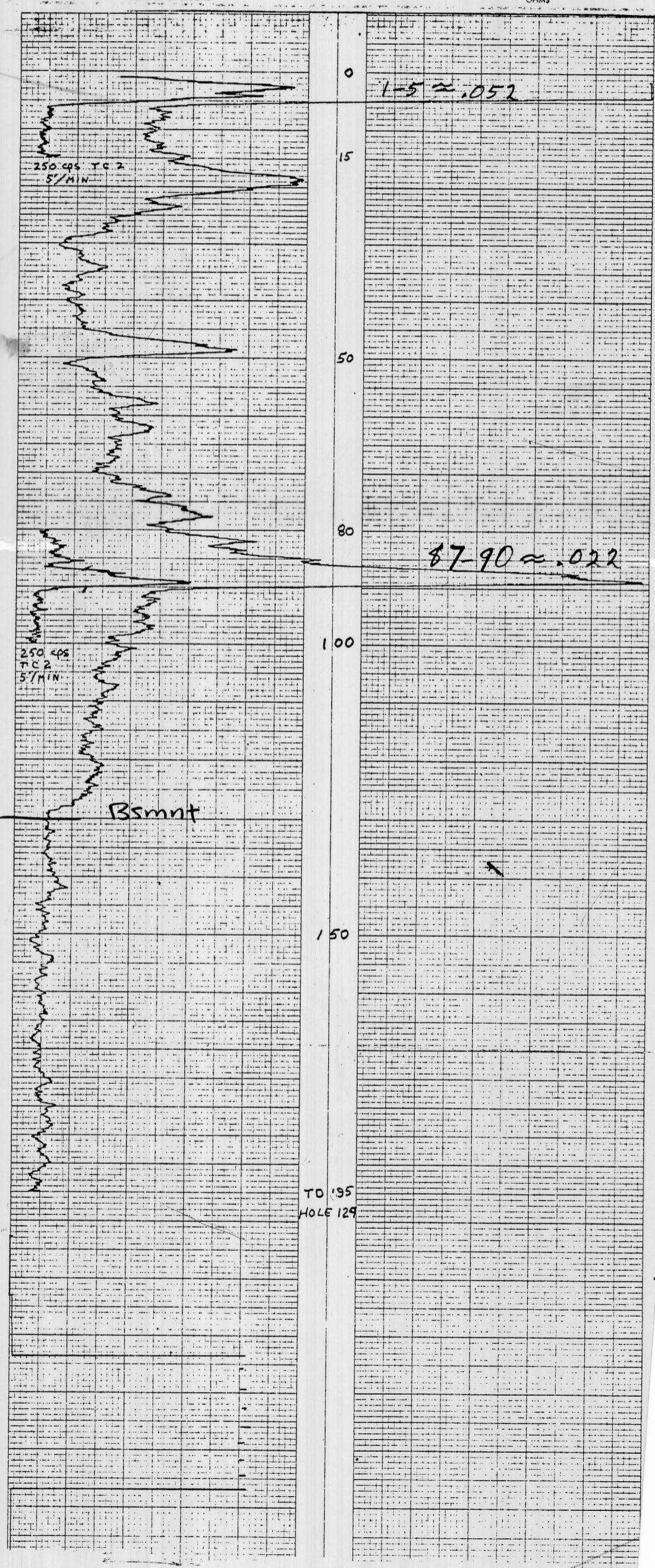
RECORDED (CHART) GEOPHYSICAL CORPORATION BUFFALO, NEW YORK NO. TC1 2123

RECORDED (CHART) GEOPHYSICAL CORPORATION BUFFALO, NEW YORK NO. TC1 2123



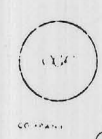
HOLE NO. 129 D. DRILLED 200 ft  
 SEC. FWP. RANGE BIT SIZE CASING  
 AREA ANDERSON MINE AIR  
 COUNTY YAVAPAI DEN. SHT. VISCOSITY  
 STATE ARIZONA RESISTIVITY  
 COMPANY GETTY OIL CO. OPERATOR STOKES  
 DATE 9 APR 68 UNIT NO. 7073  
 SECTION TOWNSHIP RANGE SURFACE 1827 TOTAL FEET LOGGED 230 LOCATION WICKREUBURG ARIZ  
 INITIAL RUN  
 T. D. LOGGED SCALE 195 250 250  
 GAMMA FULL SCALE T. C. LOGGING SPEED T. C. LOGGING SPEED T. C. LOGGING SPEED  
 TIME CONSTANT 50 2 5 2 5  
 LOGGING SPEED 4 100 15  
 LOGGING SPEED 15 80 0  
 SOURCE NO. 30 SOURCE VALUE 399 cps  
 PROBE SIZE 1 3/8  
 RES. FULL SCALE  
 S.P.  
 PROBE H 115

SELF POTENTIAL CALIPER  
 NATURAL GAMMA RAY RESISTANCE  
 COUNTS PER SECOND OHMS





130

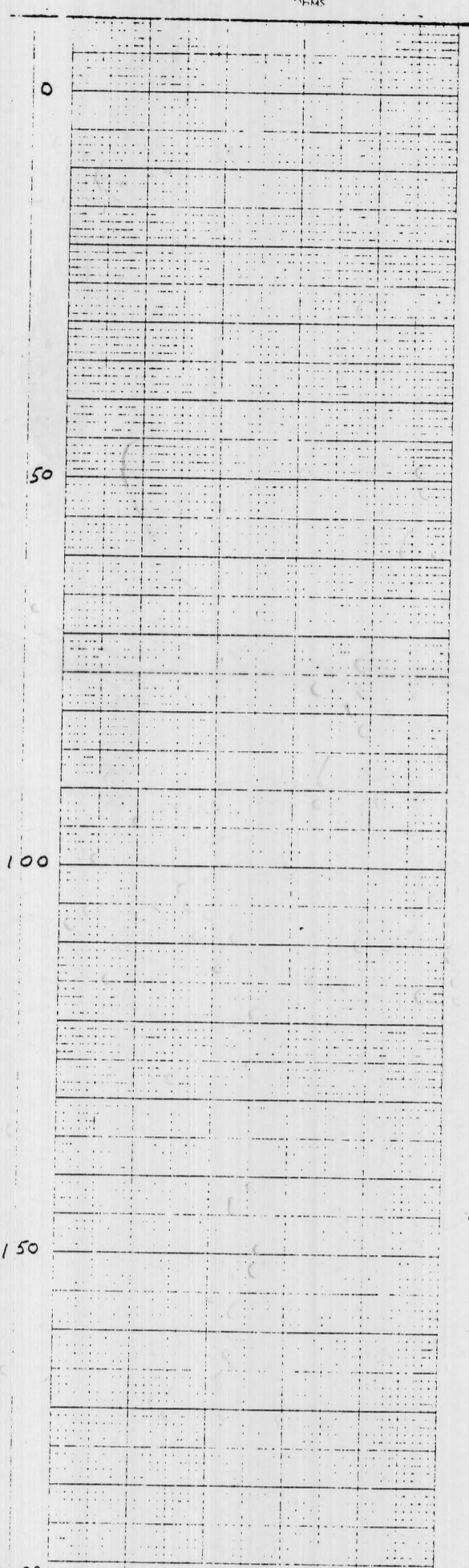
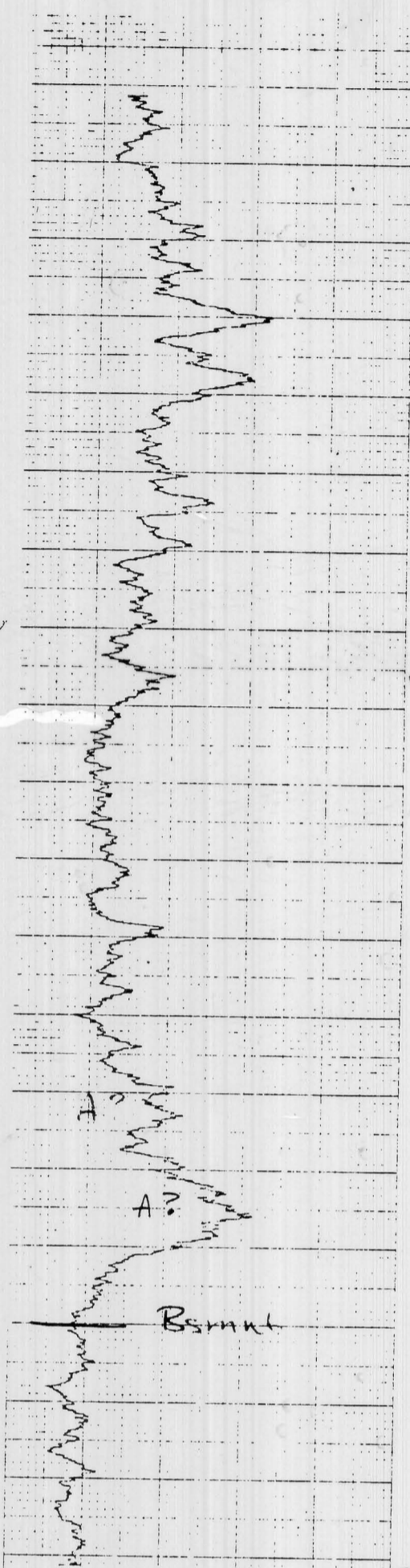


COMPANY: GETTY OIL CO.  
 HOLE NO: 130  
 AREA: ANDERSON MINE  
 COUNTY: YAVAPAI  
 SECTION: SURFACE  
 STATE: ARIZONA  
 DATE: 10 APR 68  
 LOGGING SPEED: 192  
 TIME CONSTANT: 50  
 LOGGING DEPTH: 4  
 LOGGING TIME: 15  
 SOURCE NO: 500cp  
 FLOOR SIZE: 30  
 RES FULL SET: 399cp  
 S.P.:  
 PROBE M 113

HOLE NO: 130  
 DATE: 10 APR 68  
 OPERATOR: GETTY OIL CO.  
 LOCATION: WICKENBURG, ARIZ  
 DEPTH: 192  
 LOGGING SPEED: 192  
 TIME CONSTANT: 50  
 LOGGING DEPTH: 4  
 LOGGING TIME: 15  
 SOURCE NO: 500cp  
 FLOOR SIZE: 30  
 RES FULL SET: 399cp  
 S.P.:  
 PROBE M 113

SELF POTENTIAL  
 NATURAL GAMMA RAY  
 COUNTS PER SECOND

CALIPER  
 RESISTANCE  
 OHMS



TO 192  
 HOLE 130  
 10 APR 68

