



CONTACT INFORMATION
Mining Records Curator
Arizona Geological Survey
3550 N. Central Ave, 2nd floor
Phoenix, AZ, 85012
602-771-1601
<http://www.azgs.az.gov>
inquiries@azgs.az.gov

The following file is part of the Anderson Mine Collection

ACCESS STATEMENT

These digitized collections are accessible for purposes of education and research. We have indicated what we know about copyright and rights of privacy, publicity, or trademark. Due to the nature of archival collections, we are not always able to identify this information. We are eager to hear from any rights owners, so that we may obtain accurate information. Upon request, we will remove material from public view while we address a rights issue.

CONSTRAINTS STATEMENT

The Arizona Geological Survey does not claim to control all rights for all materials in its collection. These rights include, but are not limited to: copyright, privacy rights, and cultural protection rights. The User hereby assumes all responsibility for obtaining any rights to use the material in excess of "fair use."

The Survey makes no intellectual property claims to the products created by individual authors in the manuscript collections, except when the author deeded those rights to the Survey or when those authors were employed by the State of Arizona and created intellectual products as a function of their official duties. The Survey does maintain property rights to the physical and digital representations of the works.

QUALITY STATEMENT

The Arizona Geological Survey is not responsible for the accuracy of the records, information, or opinions that may be contained in the files. The Survey collects, catalogs, and archives data on mineral properties regardless of its views of the veracity or accuracy of those data.



Century Geophysical Corporation

1204104N 641119 E

28 MAR 68

57A 181

43747N 75965E

GETTY OIL CO.

57A

ANDERSON MINE

YAVAPAI

ARIZONA

YAVAPAI

ARIZONA

ARIZONA

ARIZONA

ARIZONA

ARIZONA

ARIZONA

ARIZONA

ARIZONA

ARIZONA

ARIZONA

ARIZONA

ARIZONA

ARIZONA

ARIZONA

ARIZONA

ARIZONA

ARIZONA

ARIZONA

ARIZONA

ARIZONA

ARIZONA

ARIZONA

ARIZONA

ARIZONA

ARIZONA

ARIZONA

ARIZONA

ARIZONA

ARIZONA

ARIZONA

ARIZONA

ARIZONA

ARIZONA

ARIZONA

ARIZONA

ARIZONA

ARIZONA

ARIZONA

ARIZONA

ARIZONA

ARIZONA

ARIZONA

ARIZONA

ARIZONA

ARIZONA

ARIZONA

ARIZONA

ARIZONA

ARIZONA

ARIZONA

ARIZONA

ARIZONA

ARIZONA

ARIZONA

ARIZONA

ARIZONA

ARIZONA

ARIZONA

ARIZONA

ARIZONA

ARIZONA

ARIZONA

ARIZONA

ARIZONA

ARIZONA

ARIZONA

ARIZONA

ARIZONA

ARIZONA

ARIZONA

ARIZONA

ARIZONA

ARIZONA

ARIZONA

ARIZONA

ARIZONA

ARIZONA

ARIZONA

ARIZONA

ARIZONA

ARIZONA

ARIZONA

ARIZONA

ARIZONA

ARIZONA

ARIZONA

ARIZONA

ARIZONA

ARIZONA

ARIZONA

57A 181

57A 181

57A 181

57A 181

57A 181

57A 181

57A 181

57A 181

57A 181

57A 181

57A 181

57A 181

57A 181

57A 181

57A 181

57A 181

57A 181

57A 181

57A 181

57A 181

57A 181

57A 181

57A 181

57A 181

57A 181

57A 181

57A 181

57A 181

57A 181

57A 181

57A 181

57A 181

57A 181

57A 181

57A 181

57A 181

57A 181

57A 181

57A 181

57A 181

57A 181

57A 181

57A 181

57A 181

57A 181

57A 181

57A 181

57A 181

57A 181

57A 181

57A 181

57A 181

57A 181

57A 181

57A 181

57A 181

57A 181

57A 181

57A 181

57A 181

57A 181

57A 181

57A 181

57A 181

57A 181

57A 181

57A 181

57A 181

57A 181

57A 181

57A 181

57A 181

57A 181

57A 181

57A 181

57A 181

57A 181

57A 181

57A 181

57A 181

57A 181

57A 181

57A 181

57A 181

57A 181

57A 181

57A 181

57A 181

57A 181

57A 181

57A 181

57A 181

57A 181

57A 181

57A 181

57A 181

57A 181

57A 181

57A 181

SELF POTENTIAL

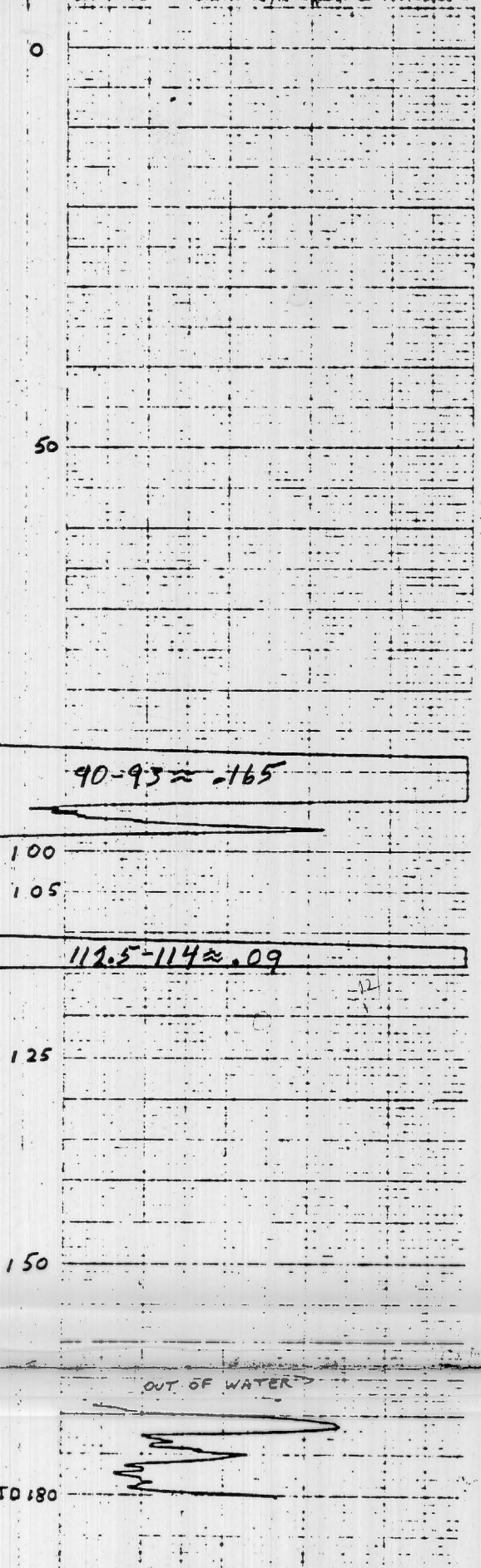
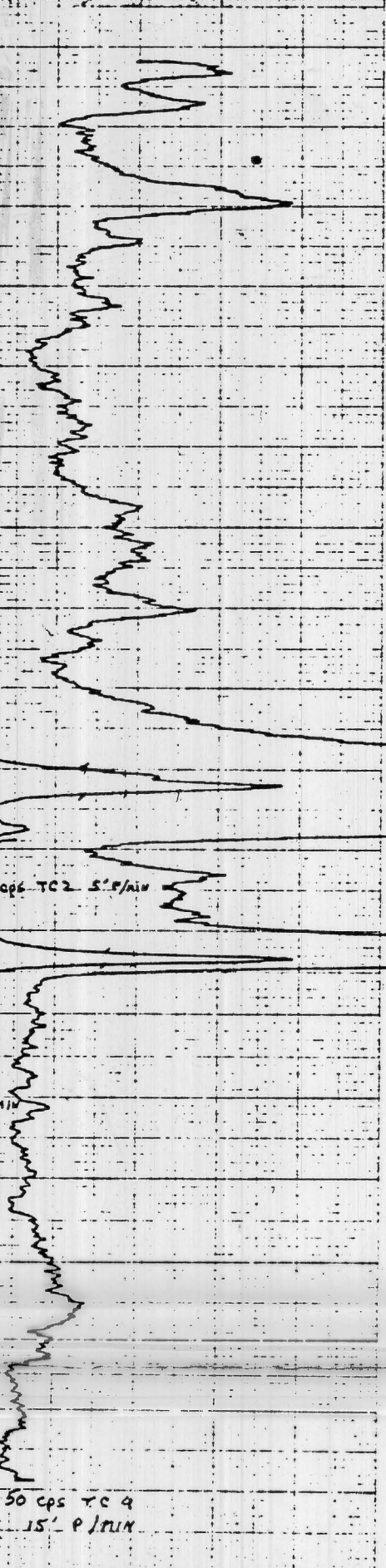
NATURAL GAMMA RAY

COUNTS PER SECOND

CALIPER

RESISTANCE

OHMS



50 cps TC 4
15' P/IN

ZERO

BACKGROUND

CAL 500 CPS TC 8

100 200 300 400 500

UNIT 7073 SOURCE 430 335 cps
PROBE 8 H 113

HOLE #57A
28 MAR 68

TD 180

OUT OF WATER

50

100

105

125

150

180

200

220

240

260

280

300

320

340

360

380

400

420

440

460