

CONTACT INFORMATION
Mining Records Curator
Arizona Geological Survey
3550 N. Central Ave, 2nd floor
Phoenix, AZ, 85012
602-771-1601
<http://www.azgs.az.gov>
inquiries@azgs.az.gov

The following file is part of the Anderson Mine Collection

ACCESS STATEMENT

These digitized collections are accessible for purposes of education and research. We have indicated what we know about copyright and rights of privacy, publicity, or trademark. Due to the nature of archival collections, we are not always able to identify this information. We are eager to hear from any rights owners, so that we may obtain accurate information. Upon request, we will remove material from public view while we address a rights issue.

CONSTRAINTS STATEMENT

The Arizona Geological Survey does not claim to control all rights for all materials in its collection. These rights include, but are not limited to: copyright, privacy rights, and cultural protection rights. The User hereby assumes all responsibility for obtaining any rights to use the material in excess of "fair use."

The Survey makes no intellectual property claims to the products created by individual authors in the manuscript collections, except when the author deeded those rights to the Survey or when those authors were employed by the State of Arizona and created intellectual products as a function of their official duties. The Survey does maintain property rights to the physical and digital representations of the works.

QUALITY STATEMENT

The Arizona Geological Survey is not responsible for the accuracy of the records, information, or opinions that may be contained in the files. The Survey collects, catalogs, and archives data on mineral properties regardless of its views of the veracity or accuracy of those data.

11 WP

42890N 78375E

20 MAR 68

ANDERSON MINE AIR DRILL

GETTY OIL CO.

YAVAPAI

ANDERSON MINE
YAVAPAI

GRILLON
SURFACE 1938

GETTY OIL CO.
20 MAR 68

STONES
1012

360 WIRELESS 4012

6.7 0955

6.3

4.6

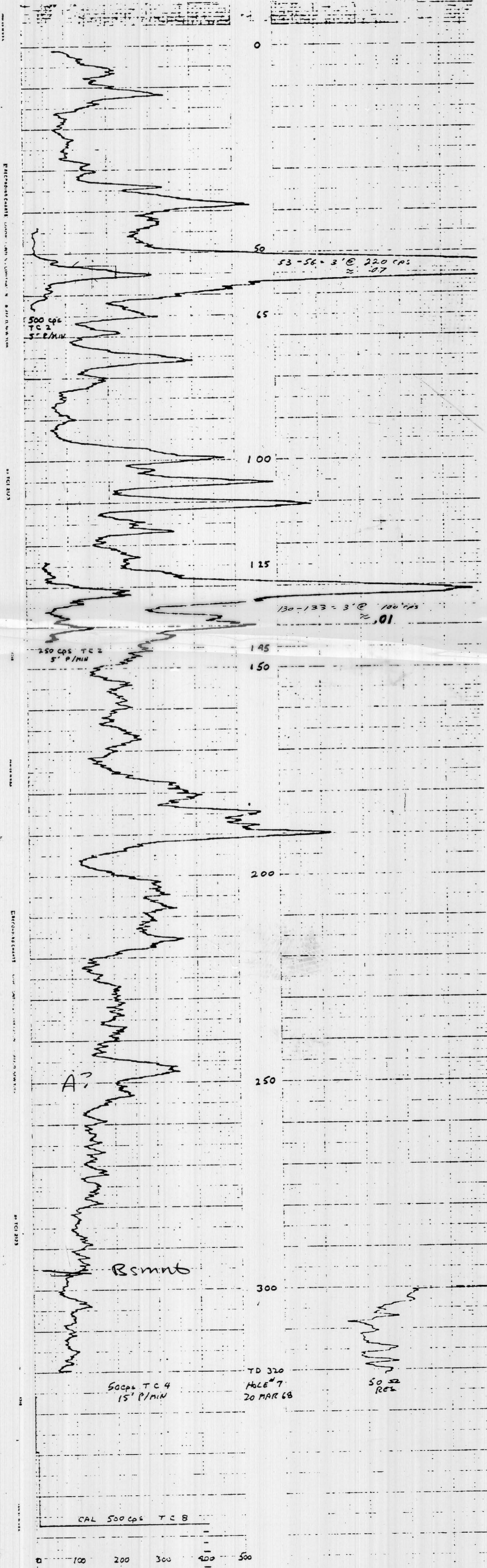
30	20	500
50	15	5
4	145	65
15	125	45
	20	10

500 cps
50 593 cps
10
50

Probe H 113

SELF POTENTIAL
NATURAL GAMMA RAY

CALIBER
RESISTANCE



UNIT 7073
SOURCE # 30 - 399 cps
PROBE H 113

51# MA

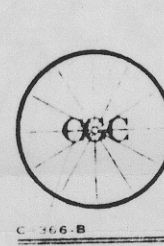
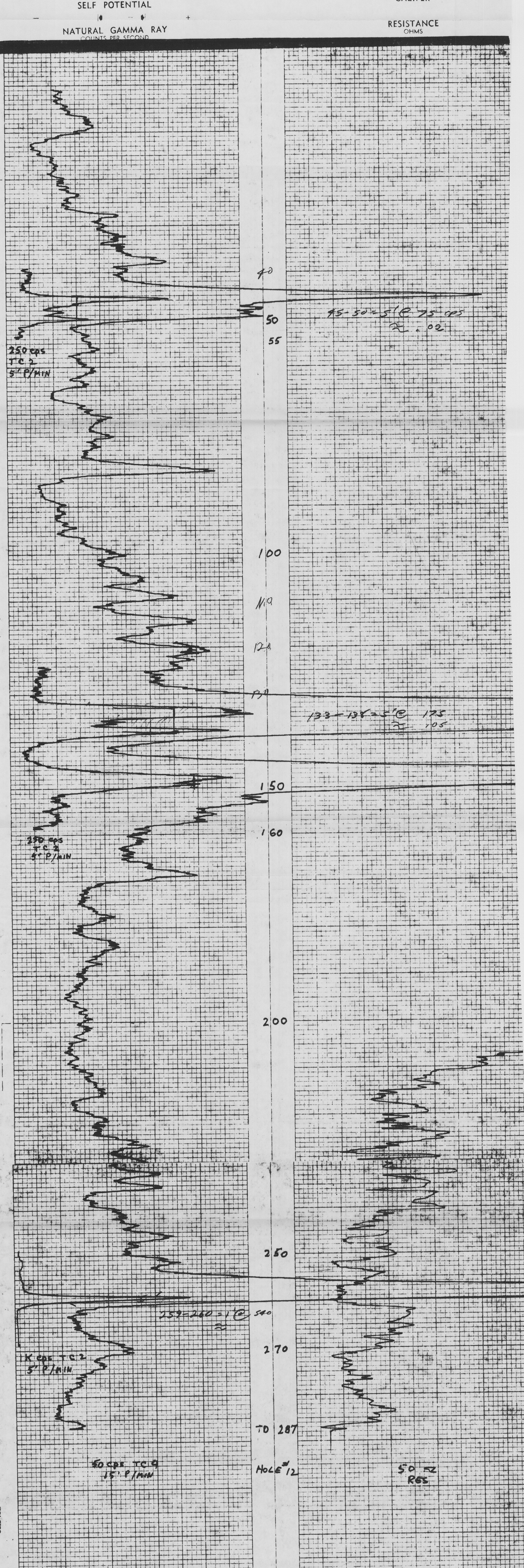
1:0 p.m.



Century Geophysical Corporation
Tulsa Oklahoma

HOLE NO	12	T D DRILLED	251	FT.
SEC.	TWP.	RANGE	BIT SIZE	CASING
			4 3/4 in.	
AREA	ANDERSON MINE		BORE HOLE FLUID	AIR DRILLED
COUNTY	YAVAPAI		DENSITY	VISCOSITY
STATE	ARIZONA		RESISTIVITY	
COMPANY	GETTY OIL CO.		OPERATOR	STOKES
DATE	18 MAR 68		UNIT NO.	7073
TOTAL FEET LOGGED	1854		LOCATION	WICKENBURG, ARIZ
			DRIVE	3.0 Hrs.
			TIME IN	
			TIME OUT	

COMPANY	GETTY OIL CO.		DATE	18 MAR 68
BORE HOLE	12			
AREA	ANDERSON MINE			
COUNTY	YAVAPAI		STATE	ARIZONA
SECTION	TOWNSHIP	RANGE	LOG MEASURED FROM	
			SURFACE 1854	



Century Geophysical Corporation
Tulsa Oklahoma

HOLE NO	12	T D DRILLED	290	FT.
SEC.	TWP.	RANGE	BIT SIZE	CASING
			4 3/4 in.	
AREA	ANDERSON MINE		BORE HOLE FLUID	AIR DRILLED
COUNTY	YAVAPAI		DENSITY	VISCOSITY
STATE	ARIZONA		RESISTIVITY	
COMPANY	GETTY OIL CO.		OPERATOR	STOKES
DATE	19 MAR 68		UNIT NO.	7073
TOTAL FEET LOGGED	77		LOCATION	WICKENBURG ARIZ
			DRIVE	16 10
			TIME IN	16 35
			LOGGING	0.4 Hrs.
			TOTAL	2.6 Hrs.
			ROUNDTrip MILEAGE	
			CHARGEABLE	
			STANDBY	

COMPANY	GETTY OIL CO.		DATE	19 MAR 68
BORE HOLE	12			
AREA	ANDERSON MINE			
COUNTY	YAVAPAI		STATE	ARIZONA
SECTION	TOWNSHIP	RANGE	LOG MEASURED FROM	
			HOLE - INITIAL RUN 287 TO 230'	

SELF POTENTIAL
NATURAL GAMMA RAY
COUNTS PER SECOND

CALIPER
RESISTANCE
OHMS

REPRODUCTION RIGHTS RESERVED BY CENTURY GEOPHYSICAL CORPORATION - BUFFALO, NEW YORK

NO. TC 2123

REPRODUCTION RIGHTS RESERVED BY CENTURY GEOPHYSICAL CORPORATION - BUFFALO, NEW YORK

NO. TC 2123

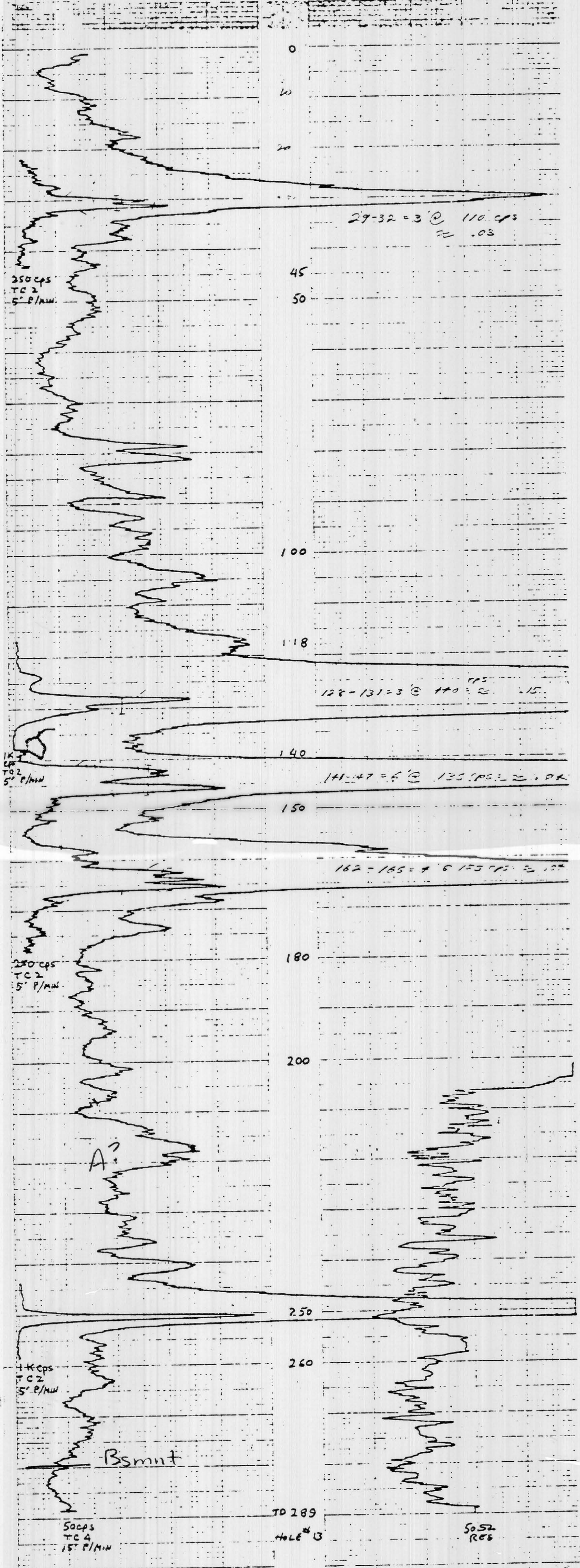


42817N 77995E 15 MAR 68 ANDERSON MINE
 BETTY CIL CO. YAVAPAI
 13 KILWA
 ANDERSON MINE SURFACE 1843 BETTY CIL CO STAKE
 YAVAPAI 19 MAR 68 1015
 WICKENS NO 1245

289	1K	250	1K	1.0	16.40
5	2	5	2	5	0.9
4	26	180	140	1.9	
15	245	135 MAX	118		
	15	45	22		

500 ft
 30 399 cps SCALE 45 cps
 1" TC 2 5" P/MIN
 5 FCSH 45
 T- 23
 PROBE H 112 TOTAL 22'

SELF POTENTIAL CALIPER
 NATURAL GAMMA RAY RESISTANCE



500 cps TC 4 15" P/MIN
 TD 289
 HOLE # 13
 5052
 RES

43015A 7700E

11 MAR 68

ANDERSON MINE

YAVAPAI

SETTY OIL CO.
14

YAVAPAI
ARIZ.

ANDERSON MINE
YAVAPAI

ARIZONA

SETTY OIL CO
17 MAR 68

STONES
1015

SURFACE 1834

339

WICKENBURG 4412.

3.0 - 0915

0.8 - 1005

0.9

4.6

209

50

250

50

2

5

2

5

4

105

100

15

120

95

500 cps

45

25

50

399 cps

1A

5

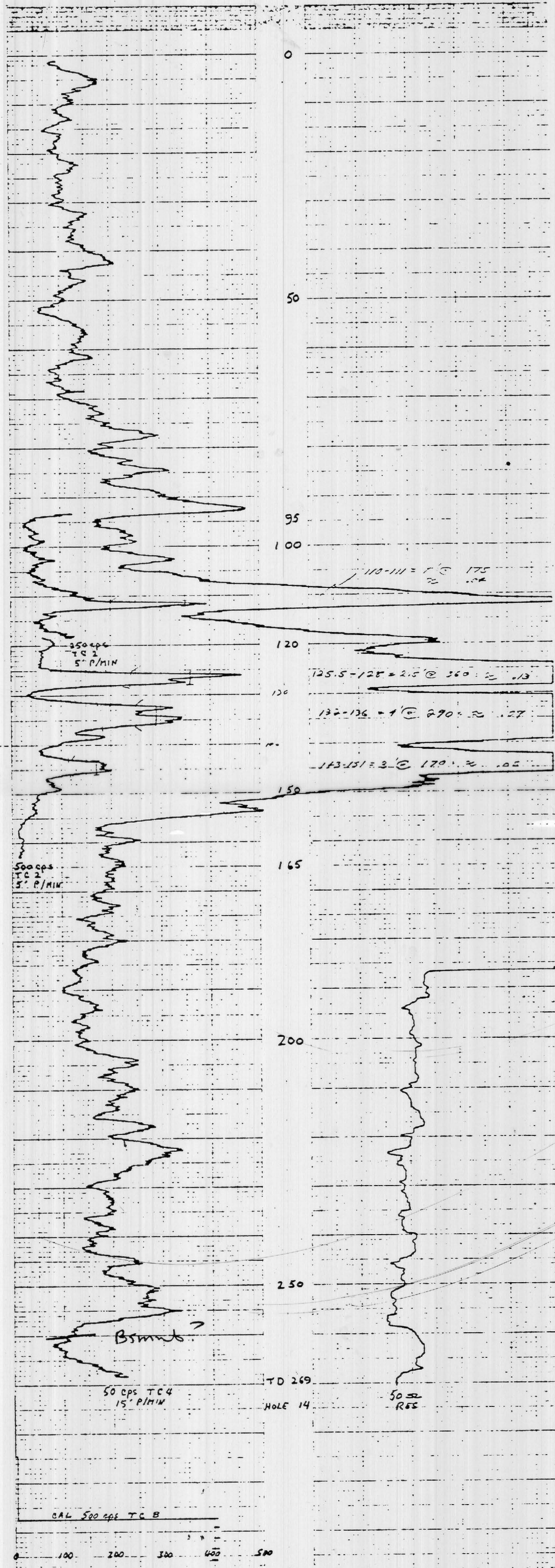
PROBE H 113

SELF POTENTIAL

CALIPER

NATURAL GAMMA RAY

RESISTANCE



CAL 500 cps TC B

0 100 200 300 400 500

UNIT 7073
SOURCE # 30 399 cps
PROBE H 113

43230N 77566E

16 MAR 68

ANDERSON MINE AIR DRILLED

GETTY OIL CO.

YAVAPAI

ARIZONA

ANDERSON MINE
YAVAPAI

ARIZONA
SURFACE 1933

GETTY OIL CO.
16 MAR 68

STATION
1015

WICKREBURG ARIZ

3.0 - 15 10

2.2 - 16 00

0.8 -

6.0 -

119	250
50	5
4	200
15	210
5000	0

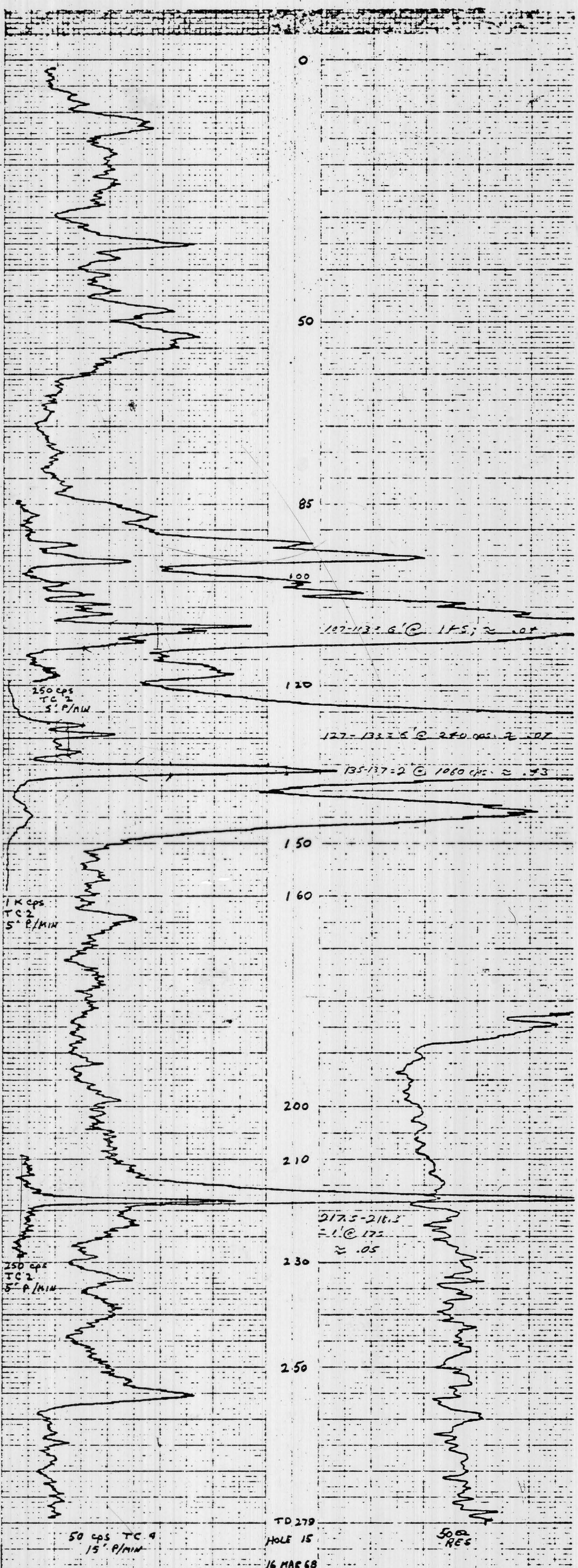
1A	250
5	5
100	100
140	85
40	35

SCOPE
50 39900
16
50

BIT SIZE
5" - 15" 5" IN.
45" - 64" 5" IN. HAMMER
64" - 69" 5" IN.

SELF POTENTIAL
NATURAL GAMMA RAY

CALIPER
RESISTANCE



ZERO
BACKGROUND
CAL 500 cps TC 8

100 200 300 400 500

UNIT 7075
SOURCE 430 399 cps
PROBE H. 113

RECORDING CHART MADE BY CONTINENTAL GEOPHYSICAL CORPORATION



43450N 77365E

12 MAR 68

ANDERSON MINE AIR DRILLED

BETTY OIL CO.

YAVAPAI

ANDERSON MINE

BETTY OIL CO.

STORES

YAVAPAI

ARIZ

12 MAR 68

7073

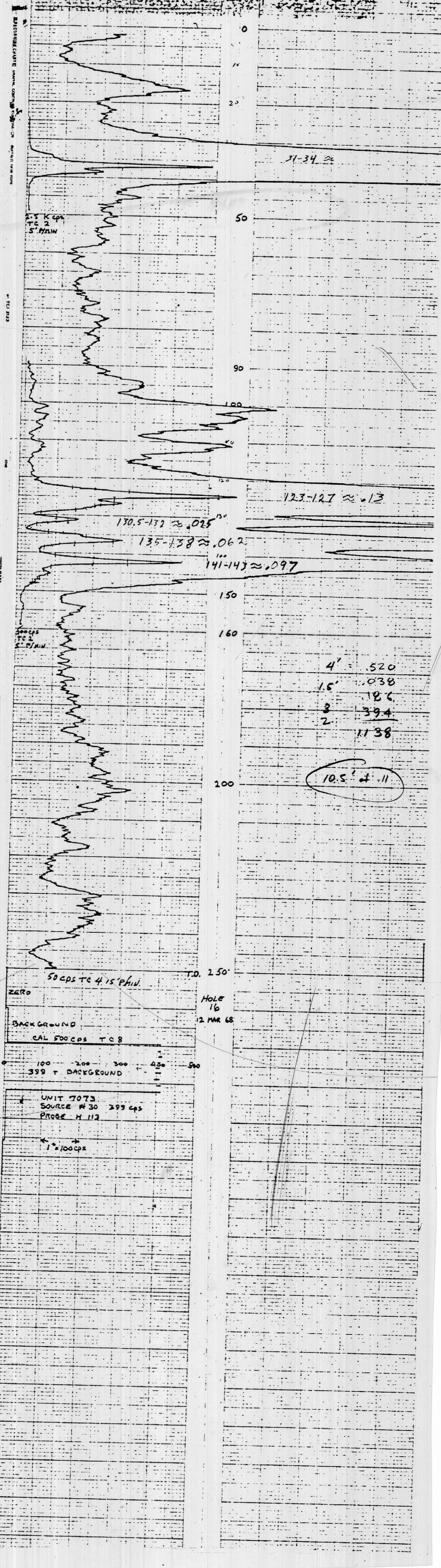
WIDEFALE 1138

345

MICROUSERS ARIZ

250	500	500	500
50	5	5	5
4	160	30	1.8
15	90	15	9.3
300 cps	70	25	
30	399 cps		
	1.8		

SELF POTENTIAL
NATURAL GAMMA RAY
CALIFER
RESISTANCE



43670 277210 14 MAR 68

ANDERSON MINE 1/2 LK LKED

JETTY OIL CO.

YAVAPAI

ARIZONA

ANDERSON MINE

YAVAPAI

ARIZONA

SURFACE

JETTY OIL CO.

14 MAR 68

Stores

1513

353

WILKINSVILLE, ARIZ.

5. 13.00

4.3. 14:05

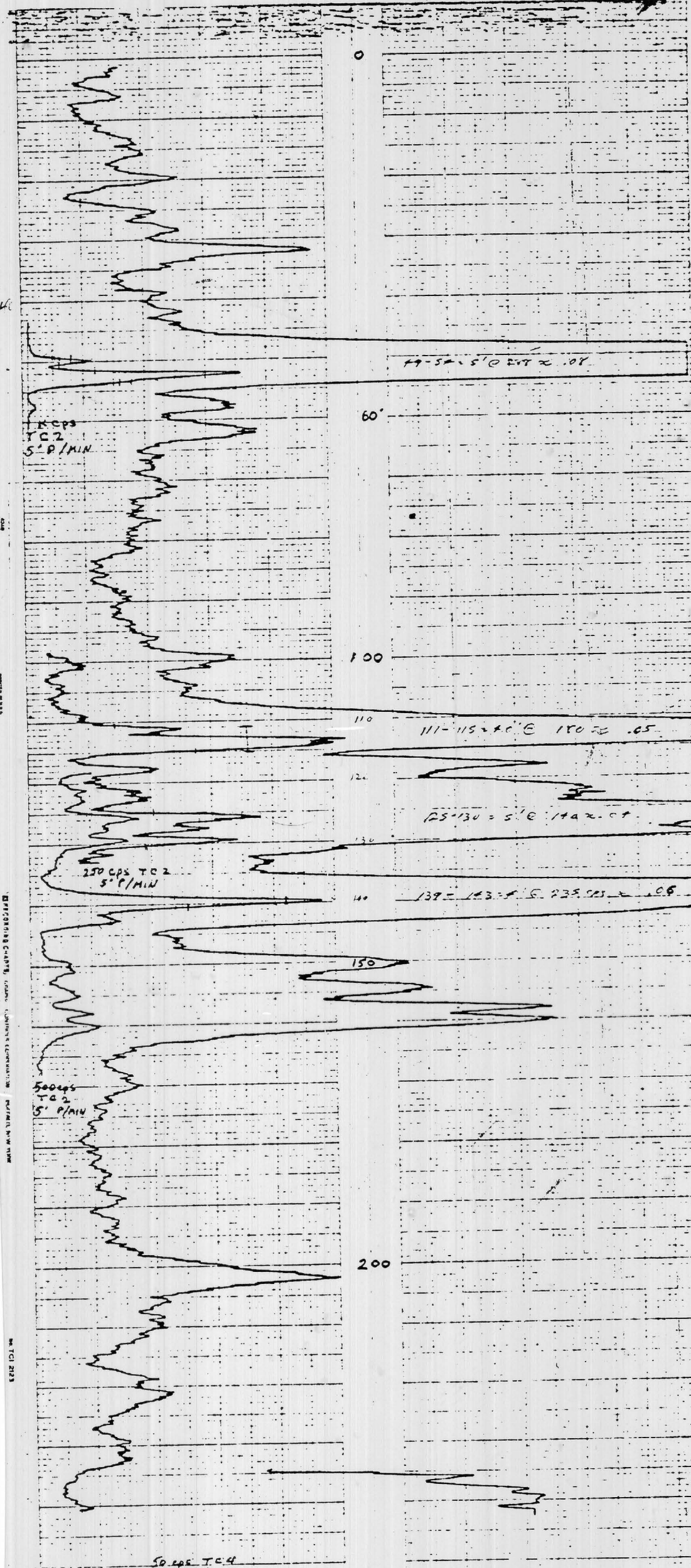
C.B.

8.1.

241	500	450	1A	4.3	14:05
50	5	5	2	5	C.B.
15	110	135	62	8.1	
	130	170	45		
	40	35	17		

SELF POTENTIAL
NATURAL GAMMA RAY

CALIPER
RESISTANCE



ZERO
BACKGROUND
CAL 500 CPS T.C. 8

UNIT 7073
SOURCE H 30 339 CPS
PROBE H 113

13 MAR 68

HOLE 17
14 MAR 68



Continental Nuclear Corporation

WETLAND 70005E

15 MAR 68

HOLENOU TIVE AIR DRILLED

GETTY OIL CO.

1424 31

18

4111

HOLENOU TIVE

GETTY OIL CO.

WIKES

44/1141

15 MAR 68

15 MAR 68

7.15

SURFACE 1727

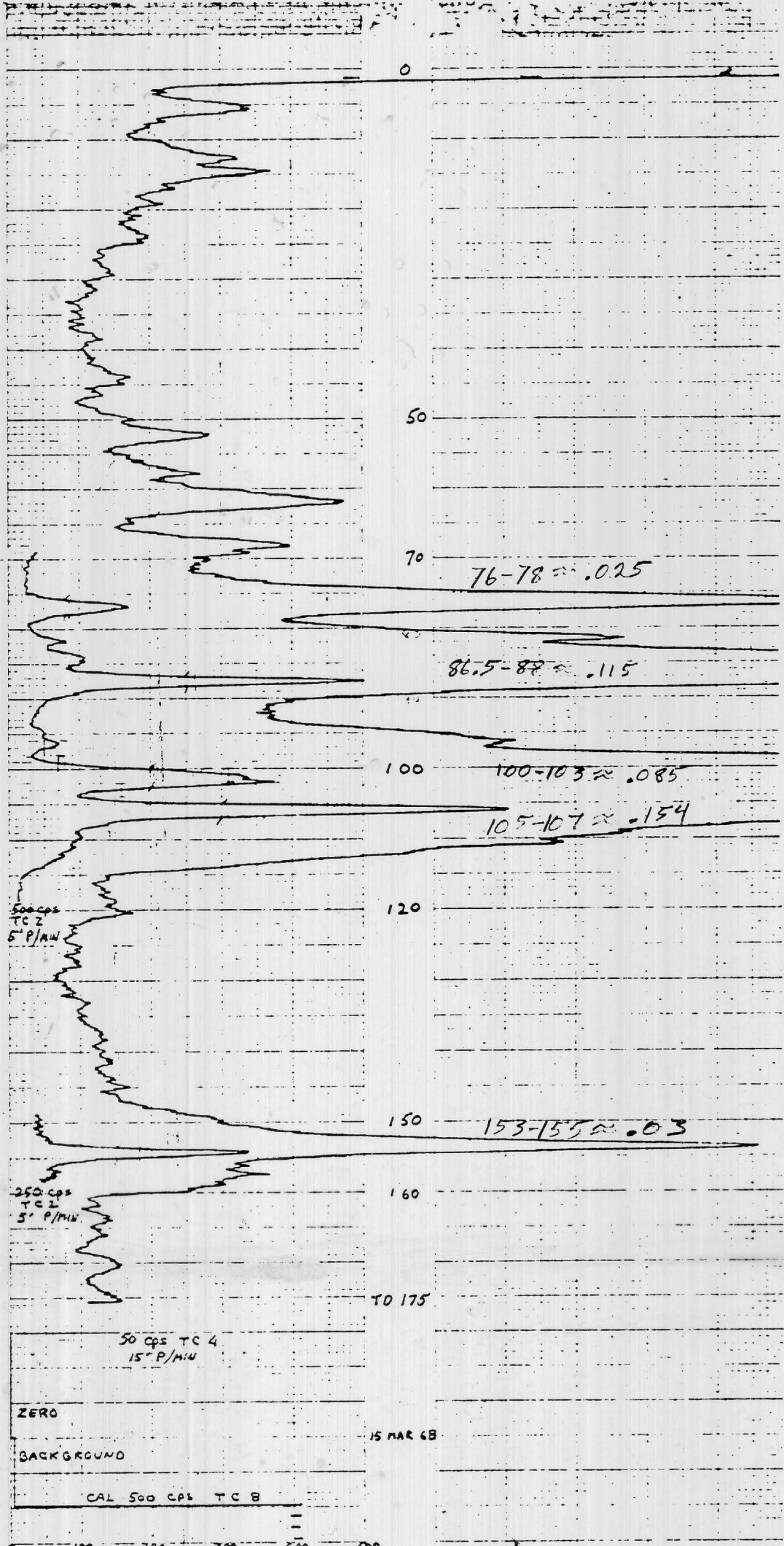
435 WIKES/SOLS. TIME

115	250	300	300	17.10
5	5	2	5	17.45
4	100	100		7.8
15	150	70		
500 cps	10	50		
500 cps	AT 2126			
	5" 10 40'			
	12 40 7. 175			

PROBE H 113

SELF POTENTIAL
NATURAL GAMMA RAY

CALIPER
RESISTANCE



UNIT 7073
SOURCE # 30 399 cps
PROBE H 113