



CONTACT INFORMATION
Mining Records Curator
Arizona Geological Survey
3550 N. Central Ave, 2nd floor
Phoenix, AZ, 85012
602-771-1601
<http://www.azgs.az.gov>
inquiries@azgs.az.gov

The following file is part of the Anderson Mine Collection

ACCESS STATEMENT

These digitized collections are accessible for purposes of education and research. We have indicated what we know about copyright and rights of privacy, publicity, or trademark. Due to the nature of archival collections, we are not always able to identify this information. We are eager to hear from any rights owners, so that we may obtain accurate information. Upon request, we will remove material from public view while we address a rights issue.

CONSTRAINTS STATEMENT

The Arizona Geological Survey does not claim to control all rights for all materials in its collection. These rights include, but are not limited to: copyright, privacy rights, and cultural protection rights. The User hereby assumes all responsibility for obtaining any rights to use the material in excess of "fair use."

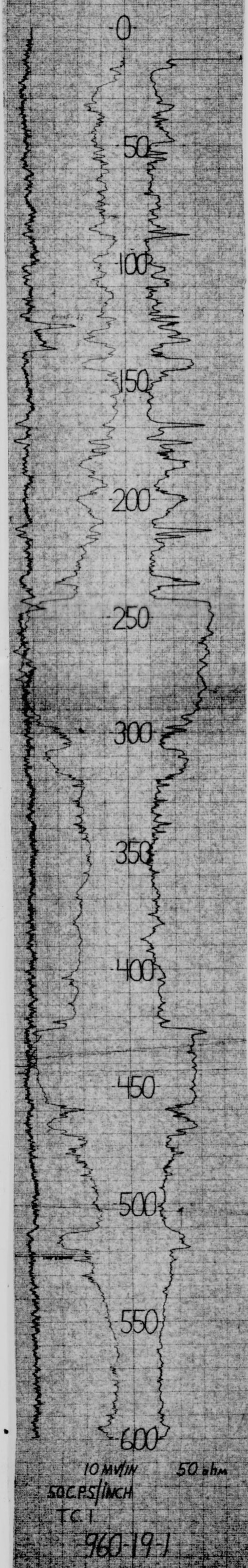
The Survey makes no intellectual property claims to the products created by individual authors in the manuscript collections, except when the author deeded those rights to the Survey or when those authors were employed by the State of Arizona and created intellectual products as a function of their official duties. The Survey does maintain property rights to the physical and digital representations of the works.

QUALITY STATEMENT

The Arizona Geological Survey is not responsible for the accuracy of the records, information, or opinions that may be contained in the files. The Survey collects, catalogs, and archives data on mineral properties regardless of its views of the veracity or accuracy of those data.

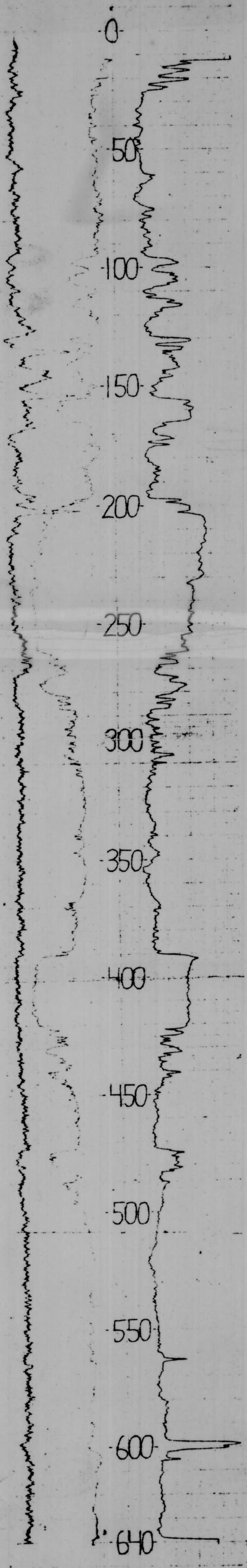
960-19-1
 19 9 70
 B.L.C. FIRST
 FIELD
 CHARGED
 CITY BLACK
 1971
 1-1-1971
 1-1-1971
 1-1-1971

960-19-1
 Elv: 4945'

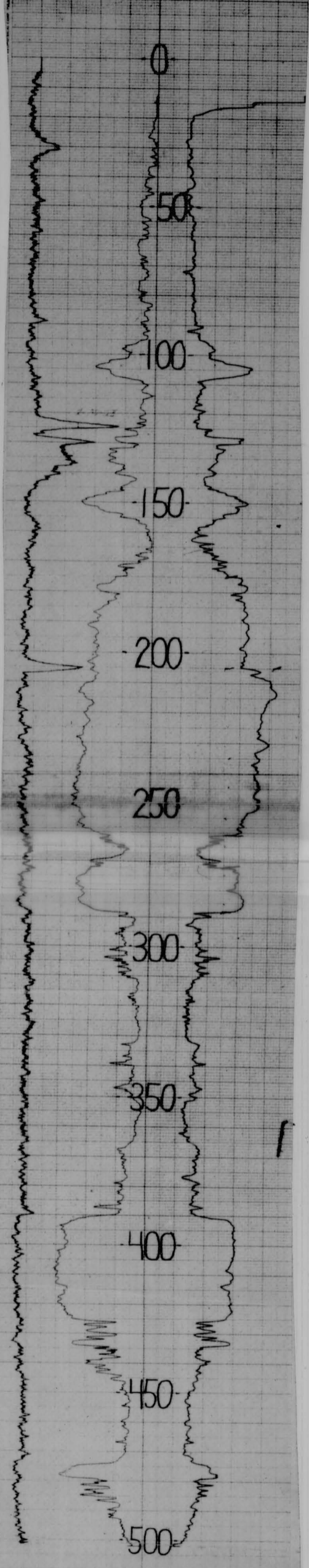


10 MV/IN 50 ohm
 50 C.P.S./INCH
 T.C. I
 960-19-1

960-29-1 690
 29 9 20 57
 JUNE 22, 1971 W.C. PAOT. H.D. JMB
 WELD
 C. C. PACO
 GETTY OIL CO. D. D. BERRY
 JUNE 22, 1971 9741
 638 638 1-118
 1528
 32.10/1000
 25
 2-70-4
 2009 1%
 50-
 10
 O.T. - 0.0
 K-1-K1/0-5
 960-29-1
 960-29-1
 EIV: 4943'



960-30-1
 Elv: 4954'
 4925
 SELF POTENTIAL
 NATURAL GAMMA RAY
 CALIBER
 RESISTANCE



10MV/IN 50 ohm

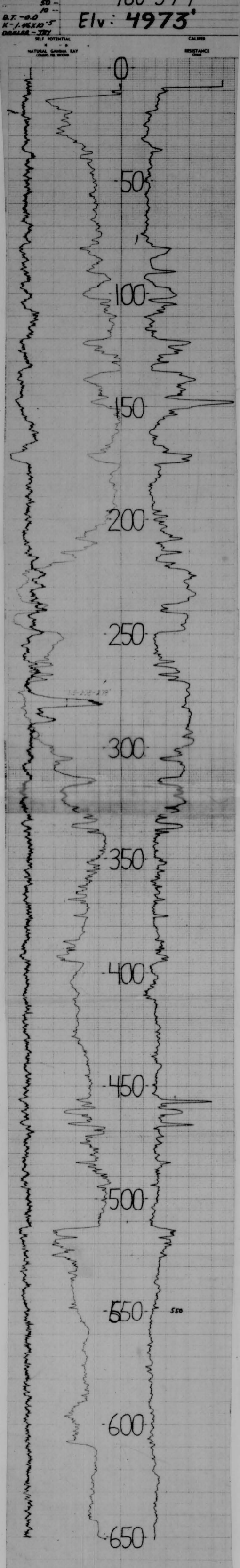
50CPS/INCH

T.C. 1

960-30-1

SOURCE 8-70-4
 DATE 20, 1971
 PAPER 6000
 100KX.25 - 20K/INCH
 T.C. 1

960-34-1
 Elv: 4973'
 1988
 D.T. - 0.0
 K - 1.46 x 10⁻⁵
 DIALER - 377



10 MV/IN 50 ohm
 50 C.P.S./INCH
 T.C.1

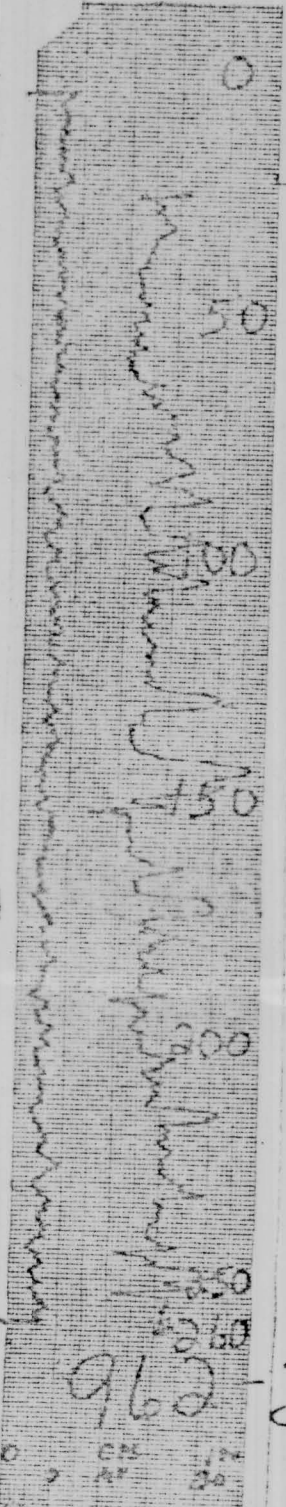
960-34-1

SPINCH 8-10-1 JUNE 23, 1971
 PAPER 6008
 UNIT 9701
 100 K.R. 25 - 2.5K/INCH
 T.C.1

FIELD - 962-20		FIELD - 962-20	
WILD CO. PRODUCT		WILD CO. PRODUCT	
CONOMOR		CONOMOR	
962-20		962-20	
EL. 5030		EL. 5030	
CPS 100		CPS 100	
AP 20		AP 20	
0-50		0-50	
962-5005			

962-20
EL. 5030

962-5005



962-20

20