



CONTACT INFORMATION
Mining Records Curator
Arizona Geological Survey
3550 N. Central Ave, 2nd floor
Phoenix, AZ, 85012
602-771-1601
<http://www.azgs.az.gov>
inquiries@azgs.az.gov

The following file is part of the Anderson Mine Collection

ACCESS STATEMENT

These digitized collections are accessible for purposes of education and research. We have indicated what we know about copyright and rights of privacy, publicity, or trademark. Due to the nature of archival collections, we are not always able to identify this information. We are eager to hear from any rights owners, so that we may obtain accurate information. Upon request, we will remove material from public view while we address a rights issue.

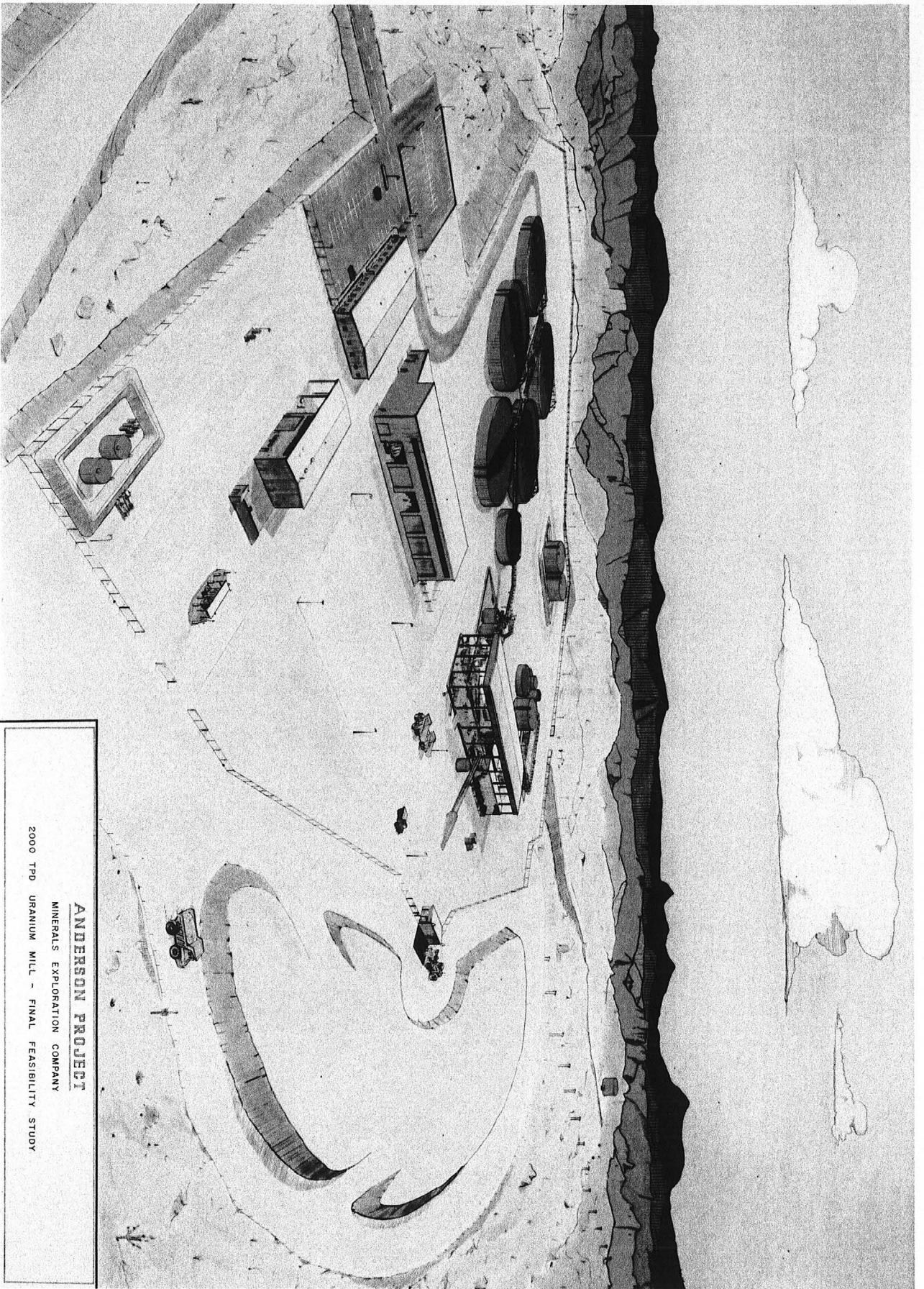
CONSTRAINTS STATEMENT

The Arizona Geological Survey does not claim to control all rights for all materials in its collection. These rights include, but are not limited to: copyright, privacy rights, and cultural protection rights. The User hereby assumes all responsibility for obtaining any rights to use the material in excess of "fair use."

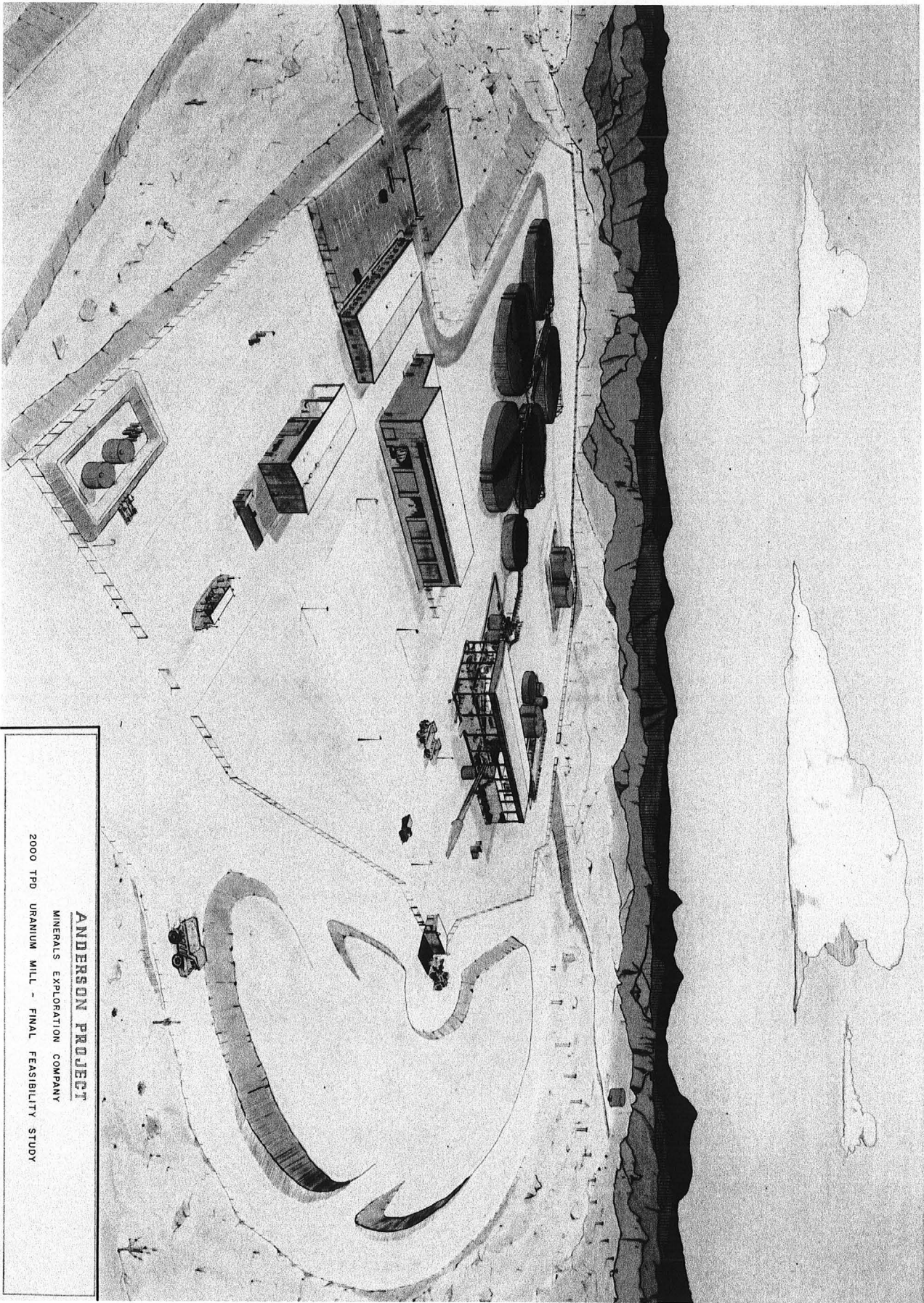
The Survey makes no intellectual property claims to the products created by individual authors in the manuscript collections, except when the author deeded those rights to the Survey or when those authors were employed by the State of Arizona and created intellectual products as a function of their official duties. The Survey does maintain property rights to the physical and digital representations of the works.

QUALITY STATEMENT

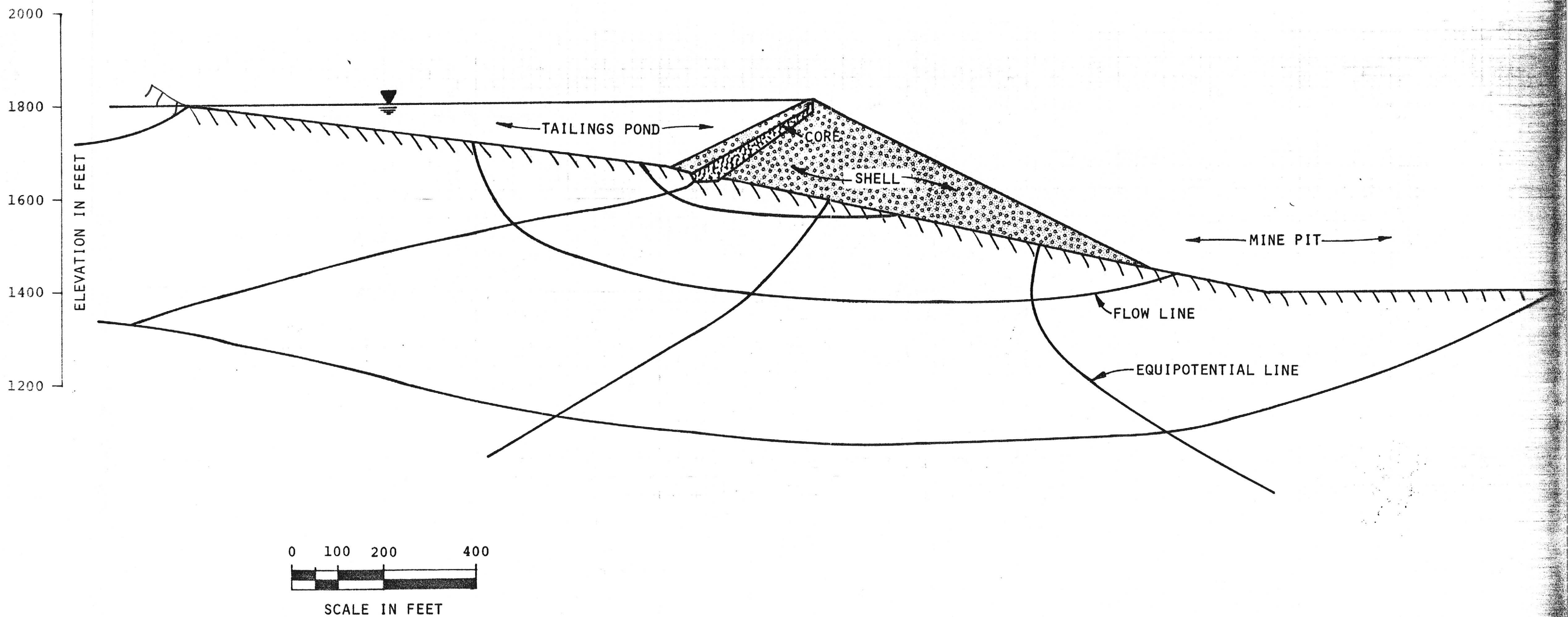
The Arizona Geological Survey is not responsible for the accuracy of the records, information, or opinions that may be contained in the files. The Survey collects, catalogs, and archives data on mineral properties regardless of its views of the veracity or accuracy of those data.



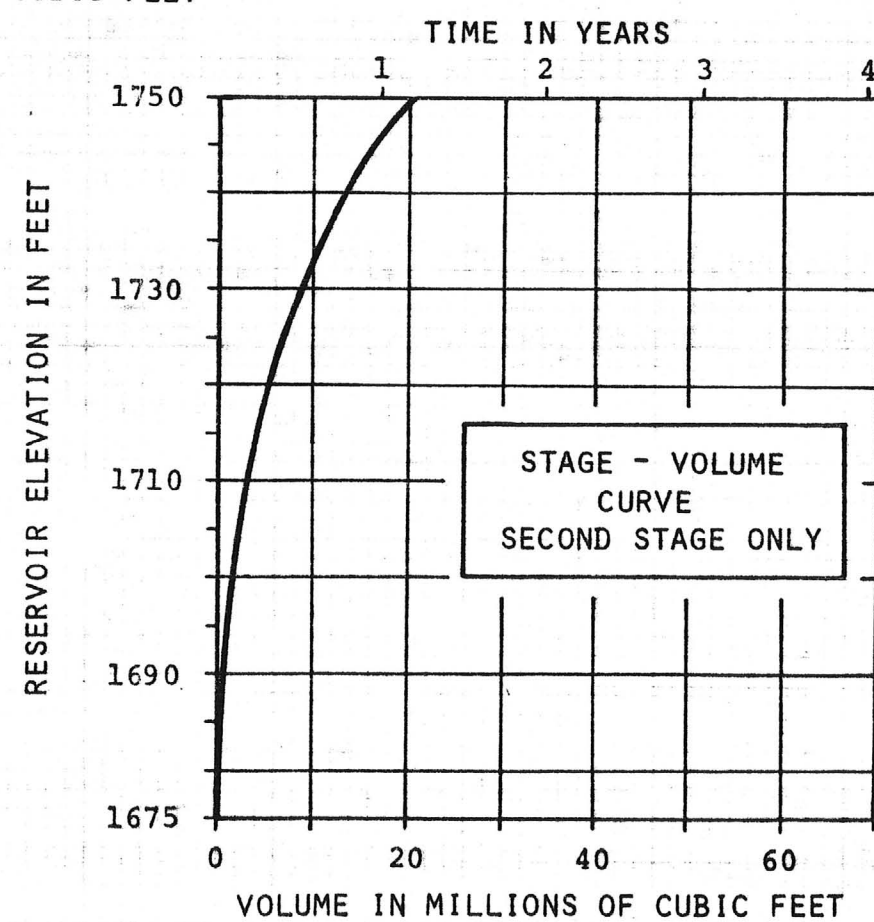
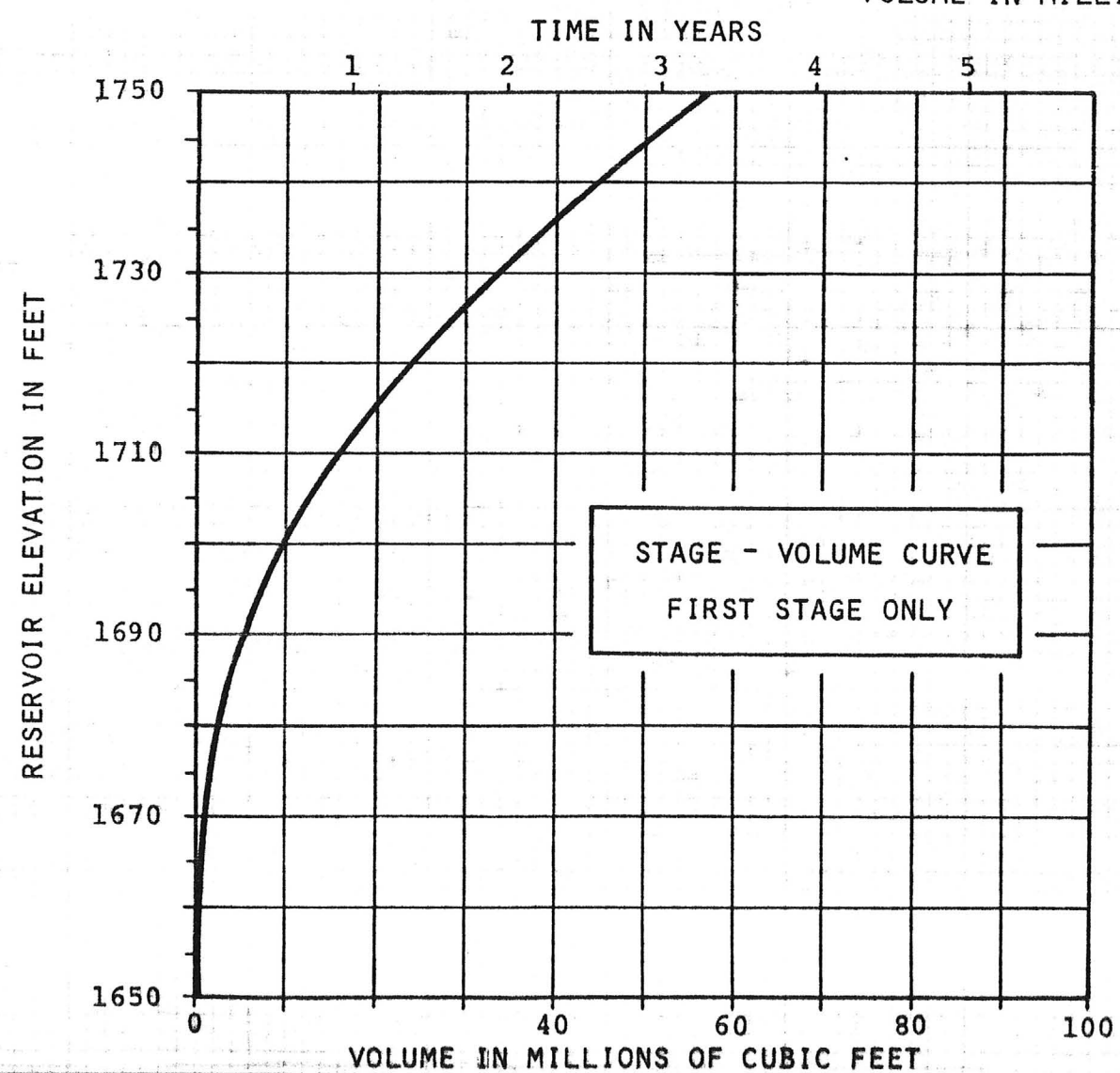
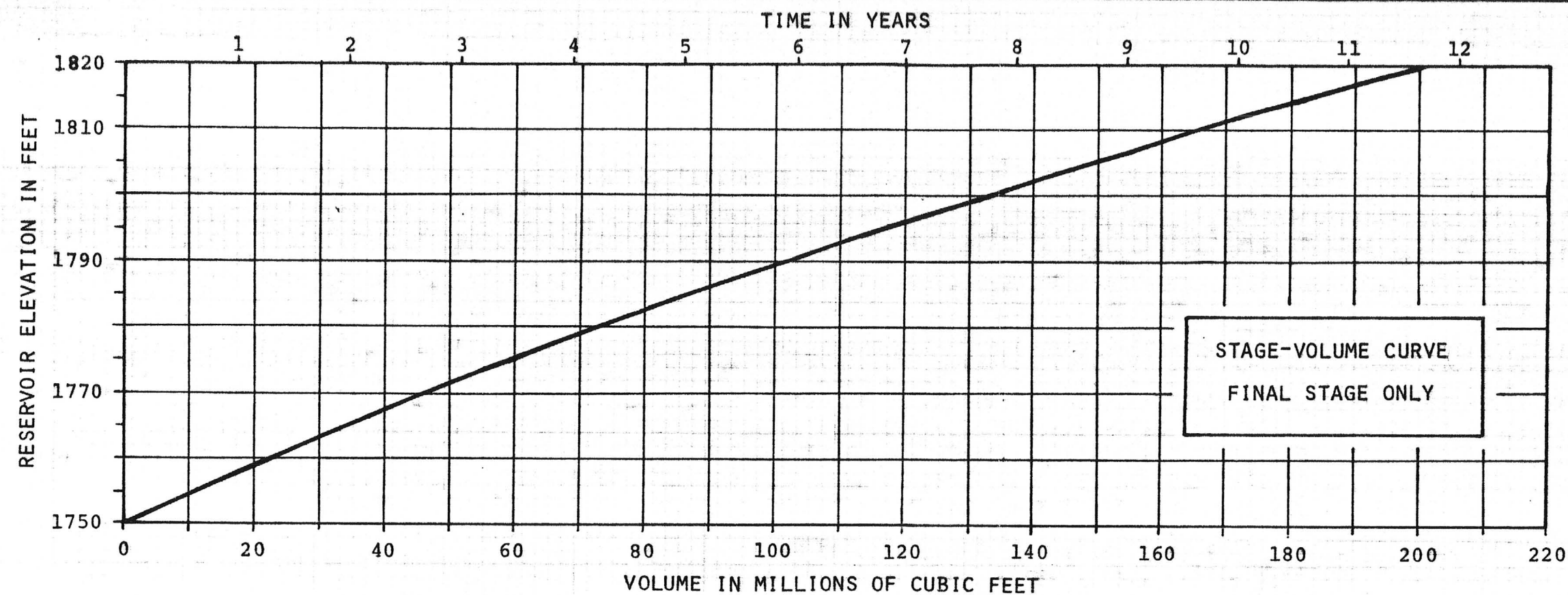
ANDERSON PROJECT
MINERALS EXPLORATION COMPANY
2000 TPD URANIUM MILL - FINAL FEASIBILITY STUDY



ANDERSON PROJECT
MINERALS EXPLORATION COMPANY
2000 TPD URANIUM MILL - FINAL FEASIBILITY STUDY



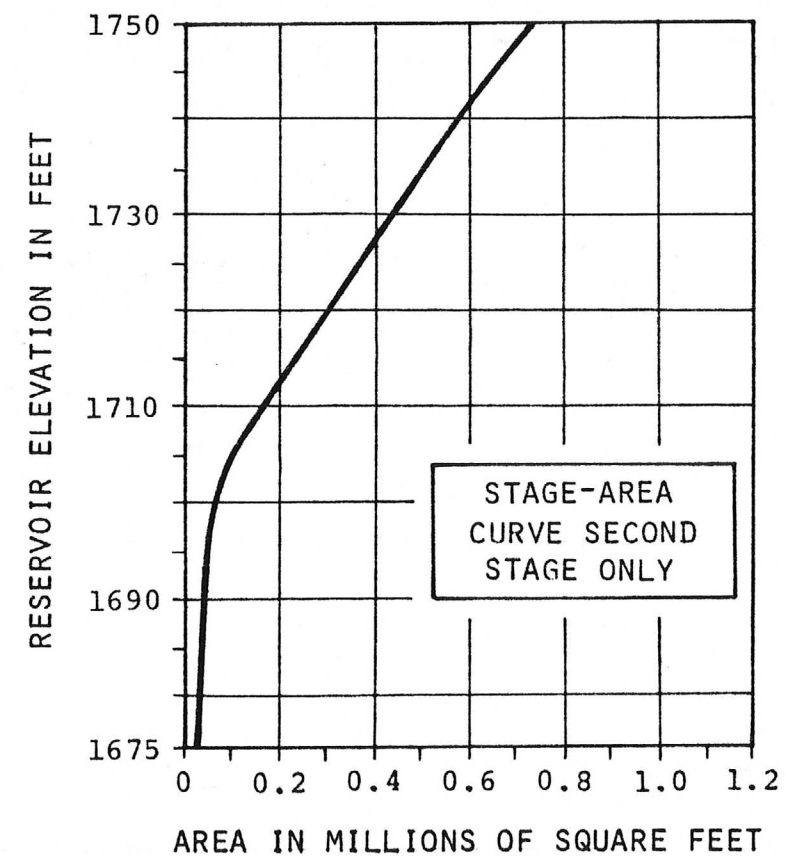
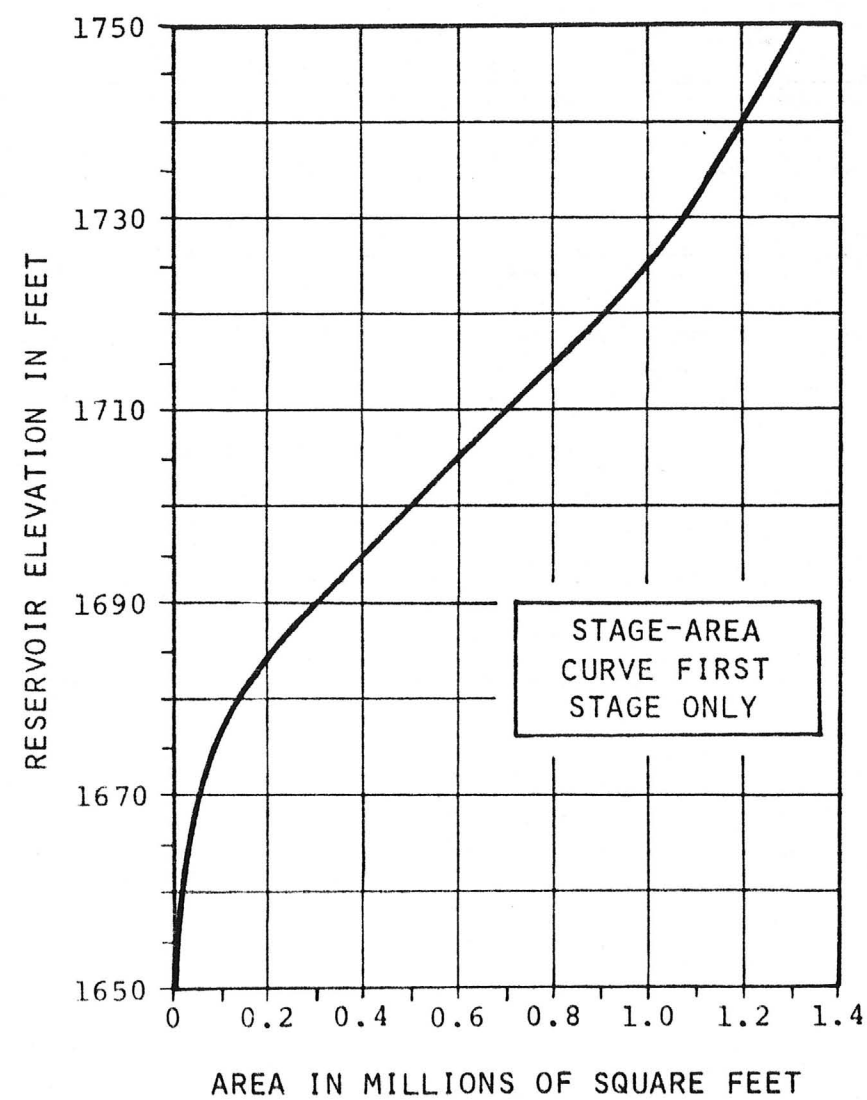
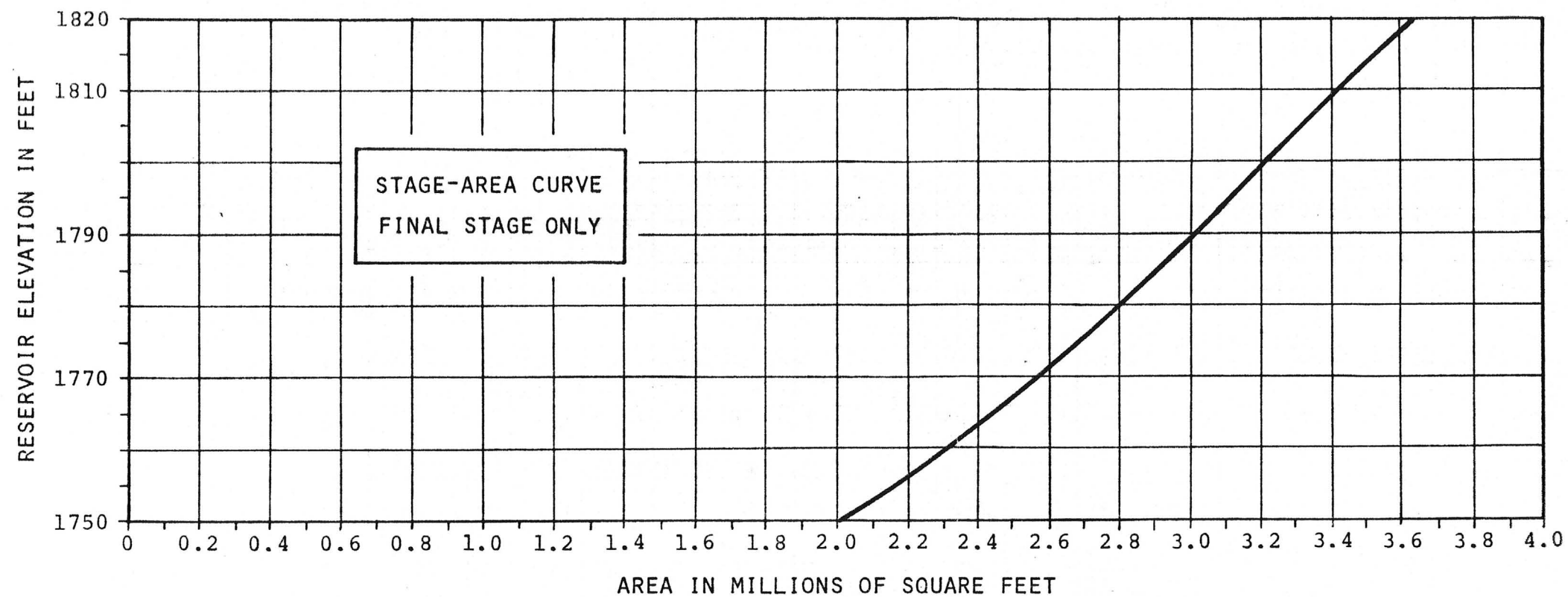
TYPICAL SECTION
SEEPAGE ANALYSIS



STAGE-VOLUME CURVES

DAMES & MOORE

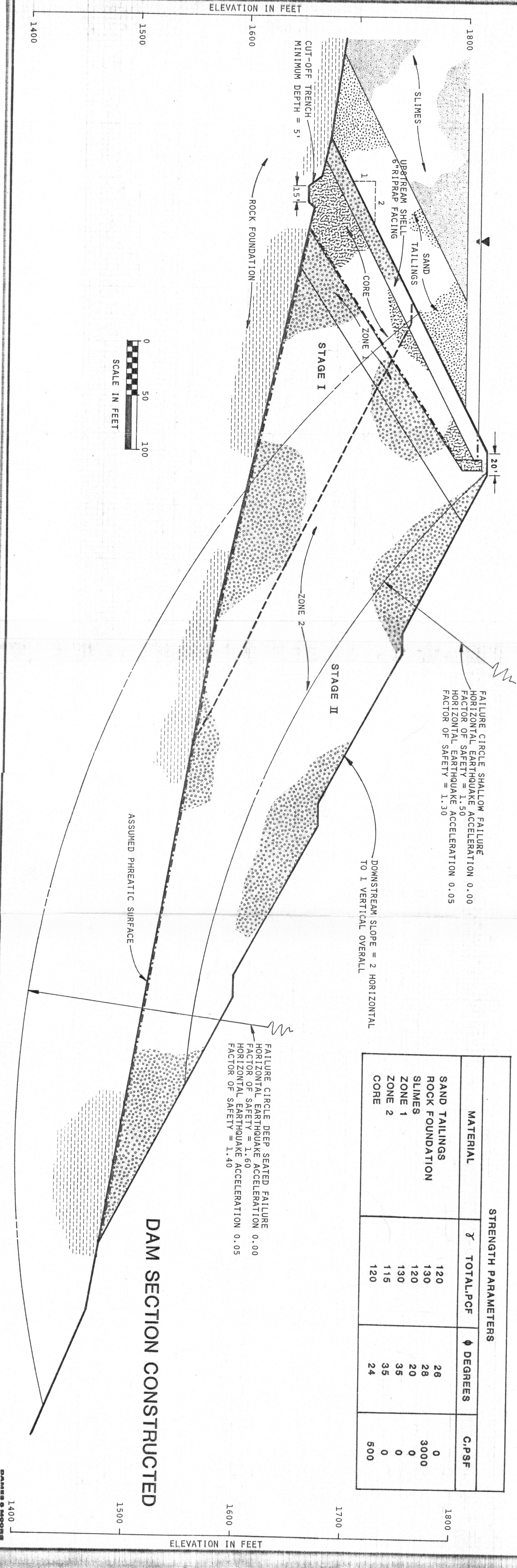
PLATE

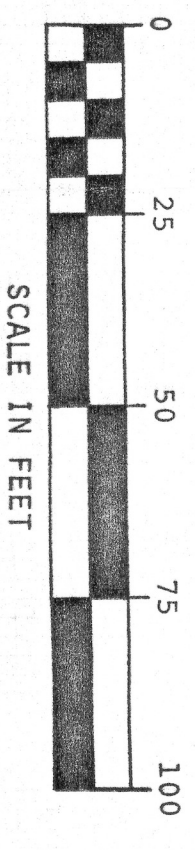
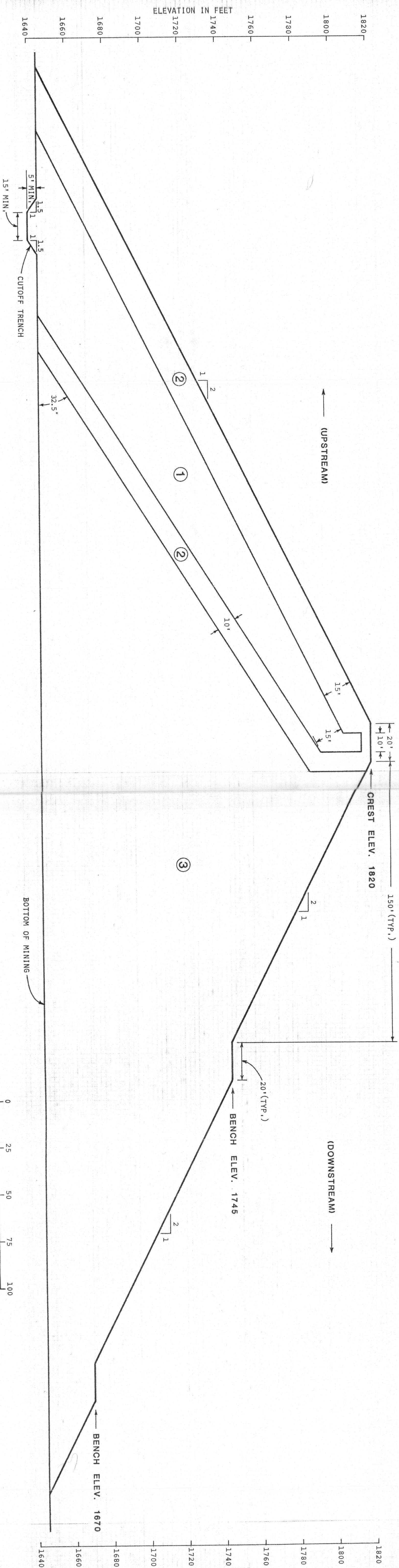


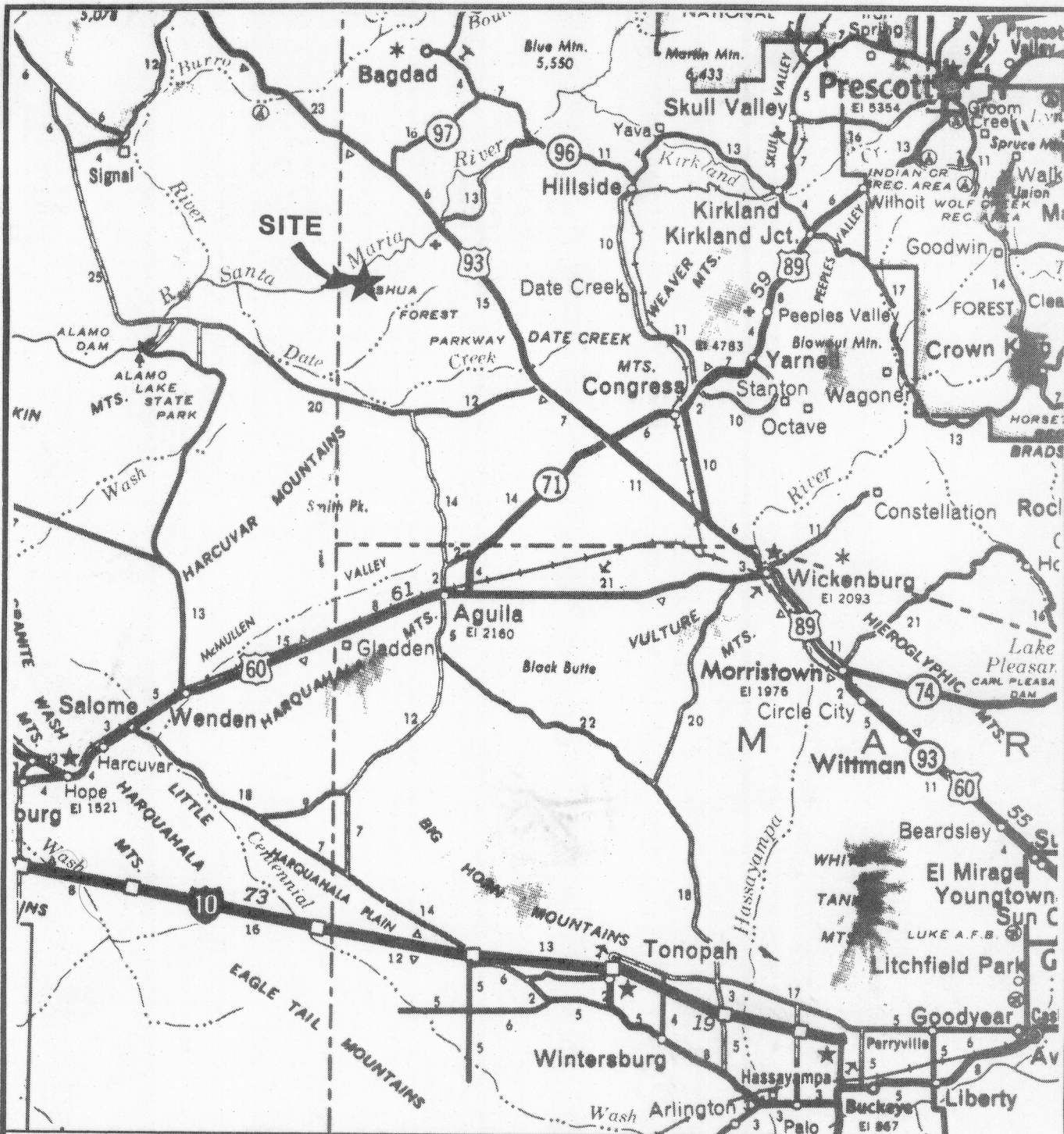
STAGE-AREA CURVES

DAMES & MOORE

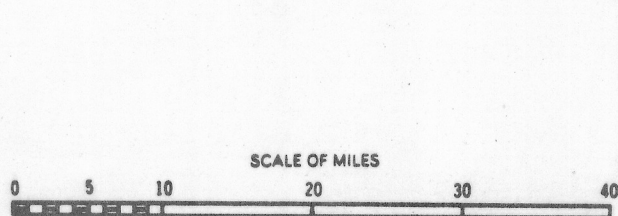
PLATE





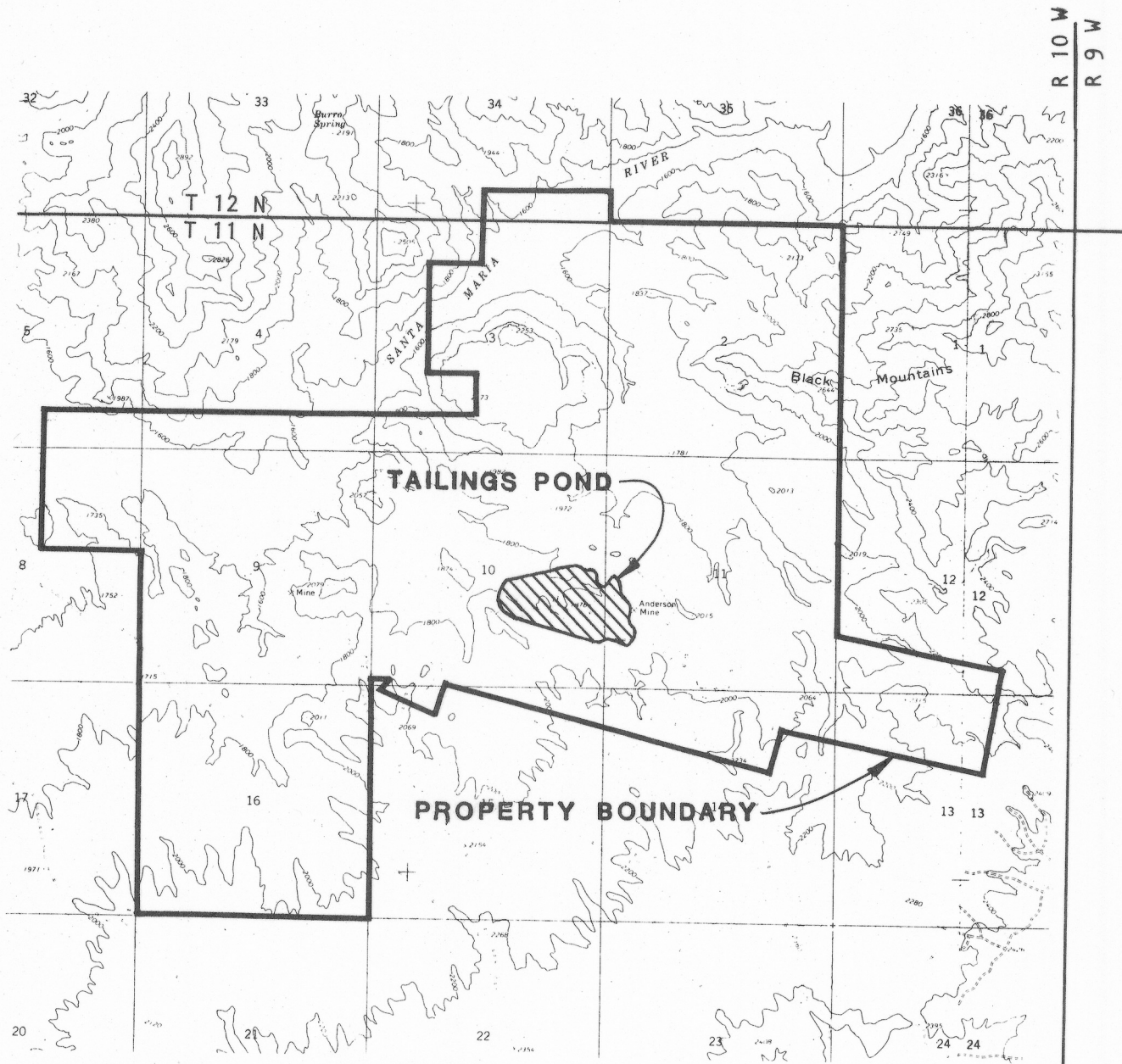


REFERENCE: 1977 "ARIZONA HIGHWAYS" ROAD MAP.

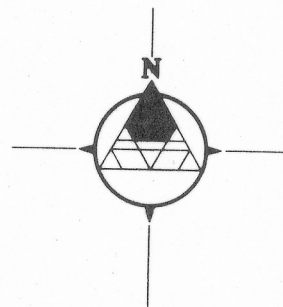


LOCATION MAP

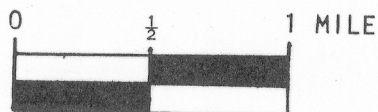
DAMES & MOORE



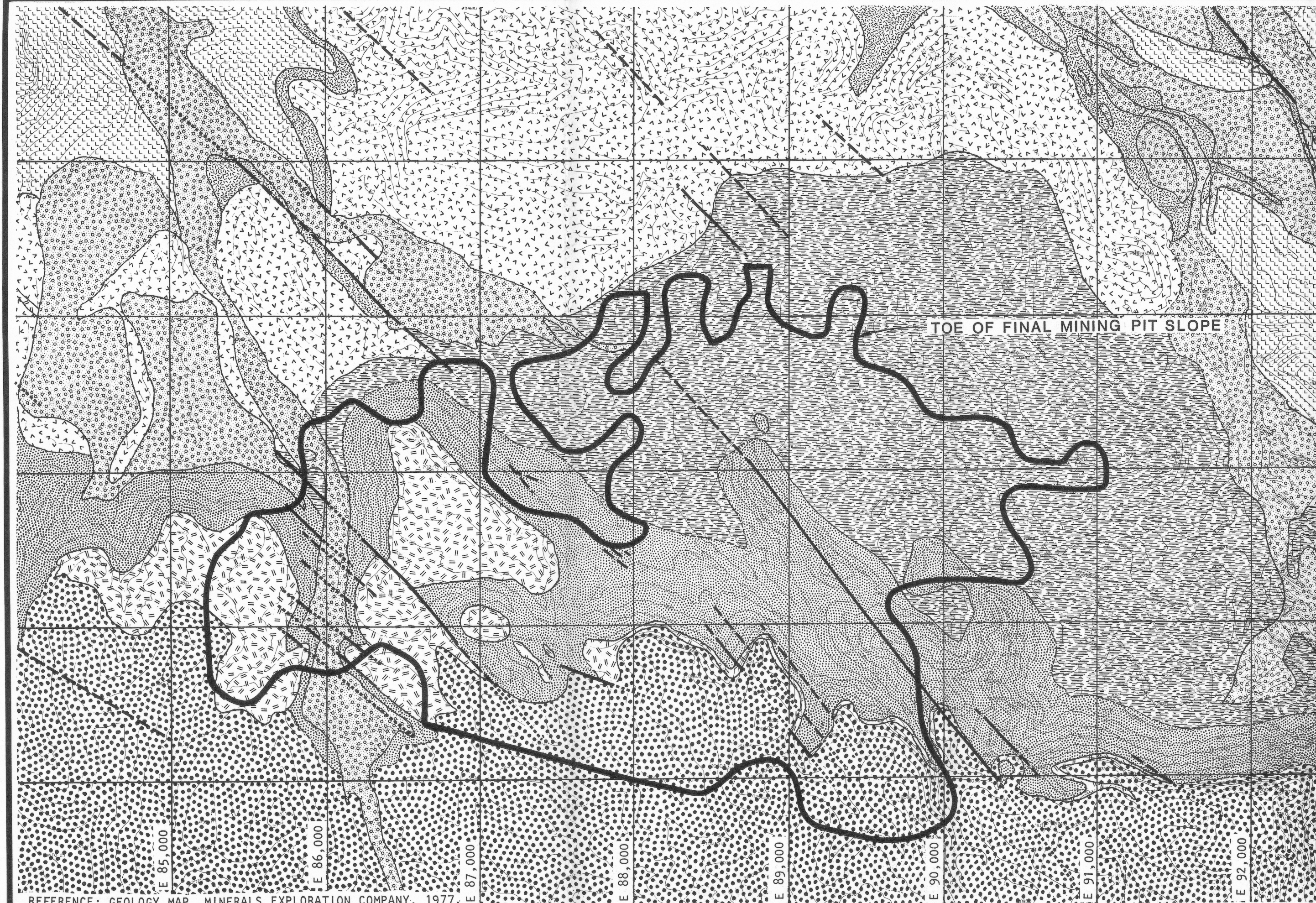
REFERENCE: USGS 7½' QUADRANGLE MAPS, 1967



VICINITY MAP



DAMES & MOORE



REFERENCE: GEOLOGY MAP, MINERALS EXPLORATION COMPANY, 1977

LEGEND

QUATERNARY

Qa1 ALLUVIUM

QUATERNARY TERTIARY

QTcg1 CAPPING CONGLOMERATE

TERTIARY

Tmb MIOCENE BASALT

Tmc MIOCENE CONGLOMERATE

Tm1 MIOCENE LACUSTRINE SEDIMENTS

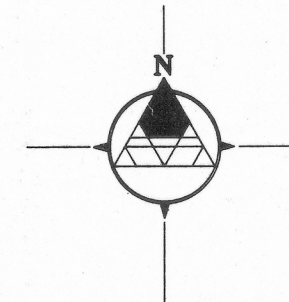
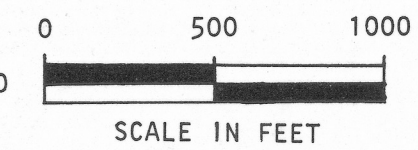
Tva ANDESITIC VOLCANICS

Tvs VOLCANICLASTIC SEDIMENTS

Tvf FELSIC VOLCANICS

- - FAULT, DASHED WHERE APPROXIMATE

..... FAULT, PROJECTED BENEATH
MAPPED UNITS



GEOLOGIC MAP

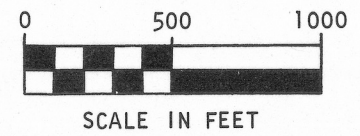
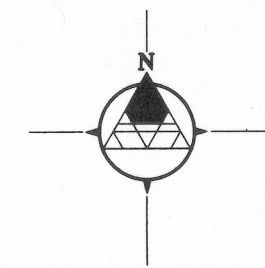
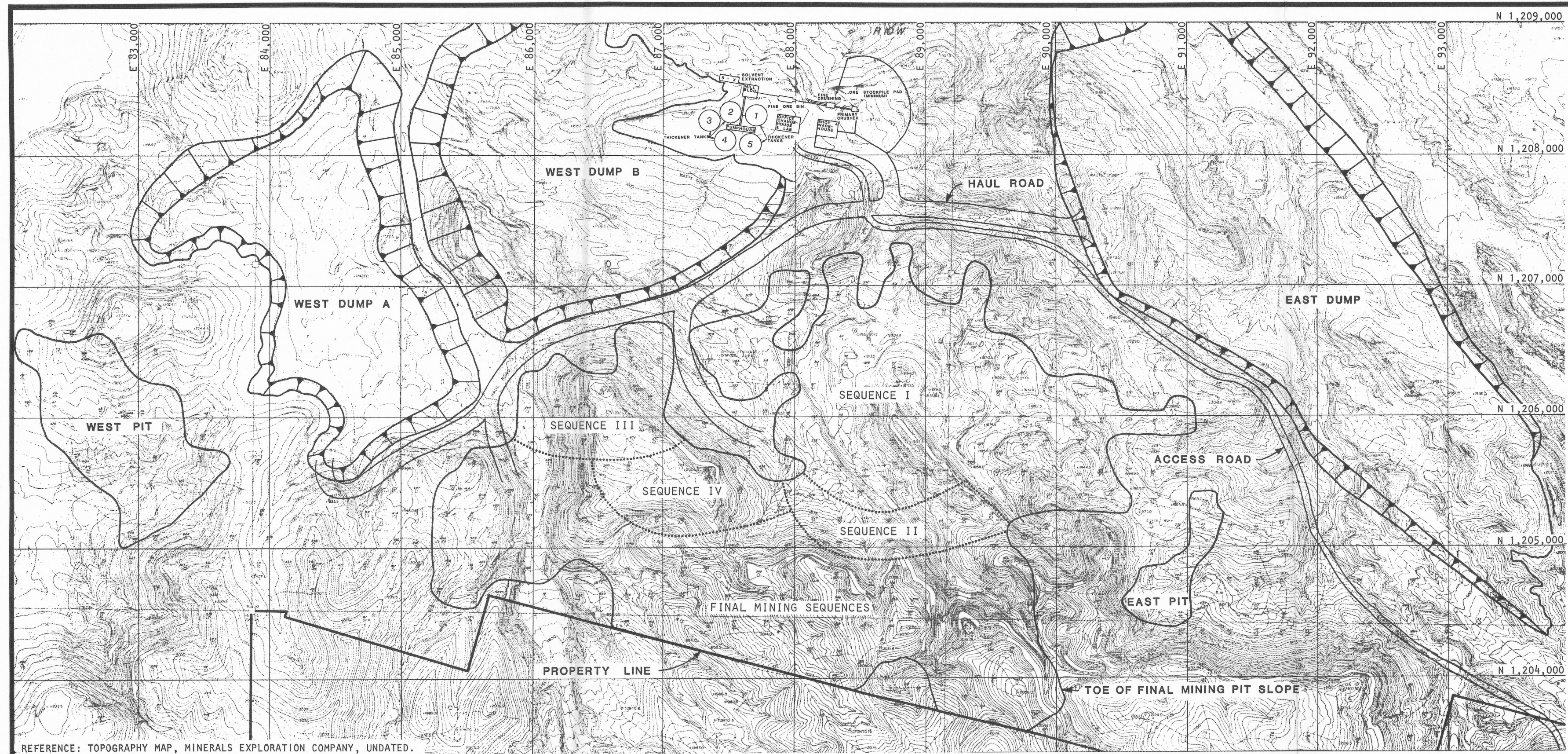
DAMES & MOORE

PLATE 3

REVISIONS
BY DATE
OF

FILE
BY DATE
CHECKED BY

466.12 (4-64)



SITE PLAN PROPOSED MINE AND MILL FACILITIES

DAMES & MOORE

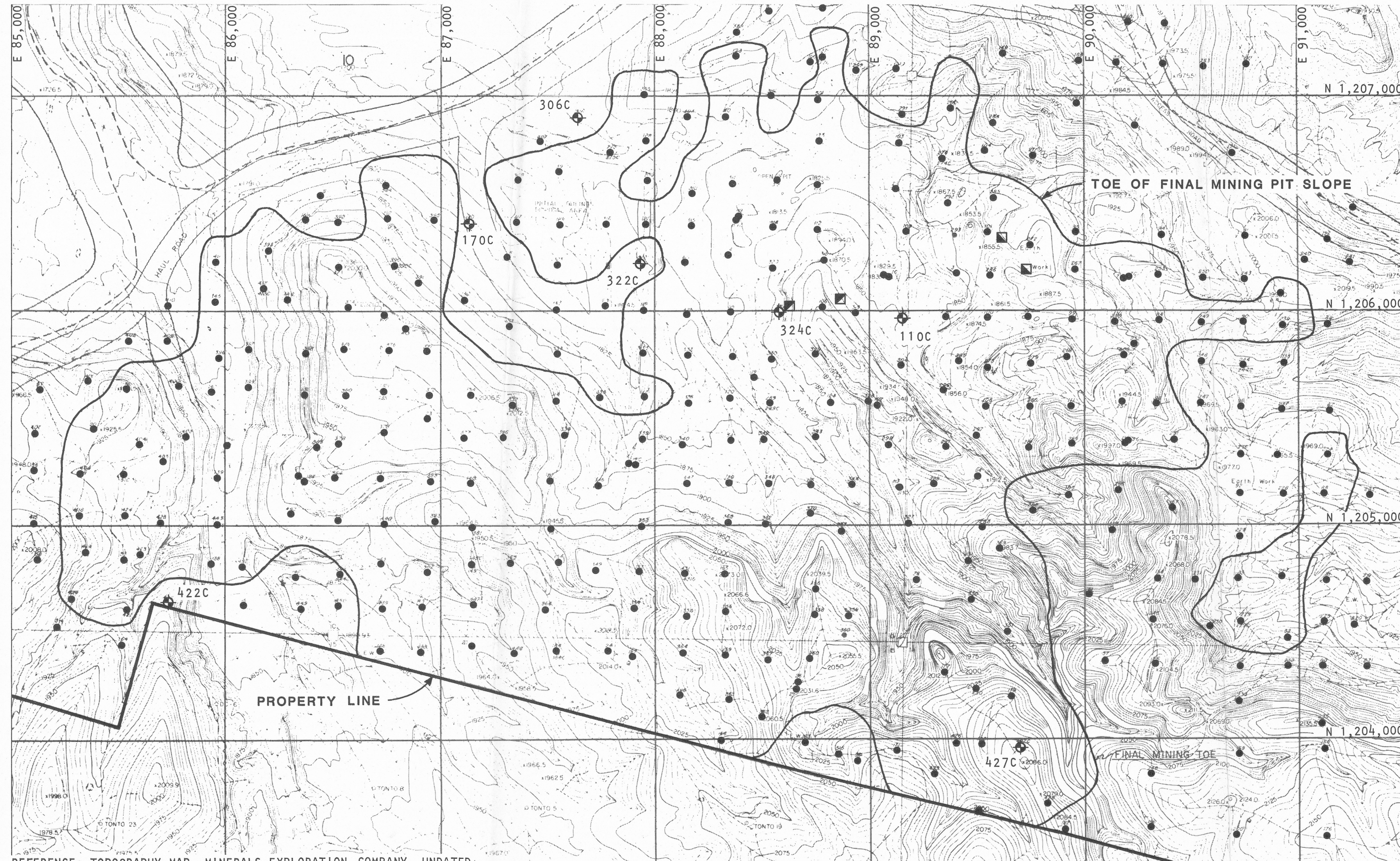
PLATE 4

REFERENCE: TOPOGRAPHY MAP, MINERALS EXPLORATION COMPANY, UNDATED.

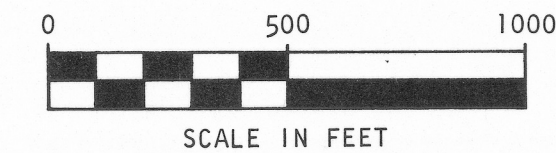
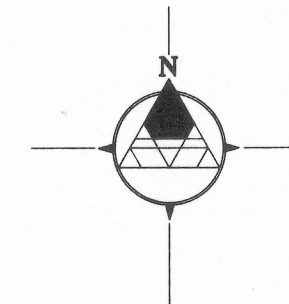
REVISIONS:
BY: _____ DATE: _____
BY: _____ DATE: _____
BY: _____ DATE: _____

FILE: _____
BY: _____ DATE: _____
CHECKED BY: _____ DATE: _____

466.12 (4-64)



REFERENCE: TOPOGRAPHY MAP, MINERALS EXPLORATION COMPANY, UNDATED



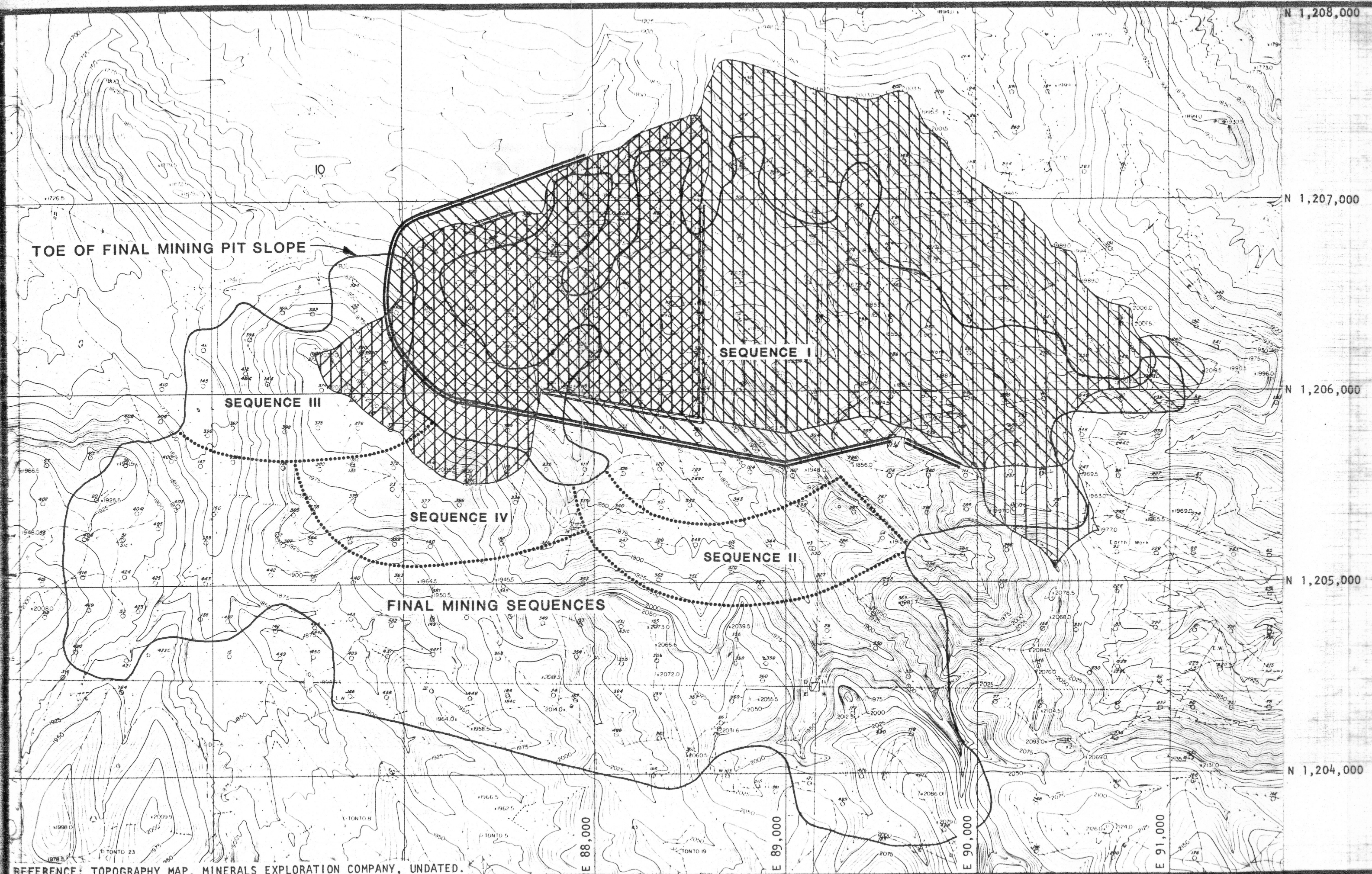
LEGEND





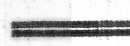
- ⊕ DAMES & MOORE BORINGS
- ORE EXPLORATION BORINGS
DRILLED BY MINERALS
EXPLORATION COMPANY
- ⊠ BULK SAMPLE
CORE MATERIAL
- ⊡ BULK SAMPLE
SHELL MATERIAL

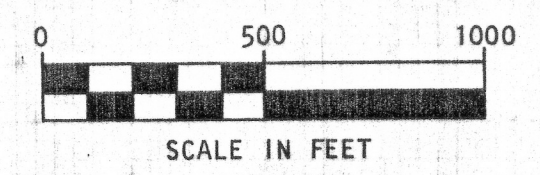
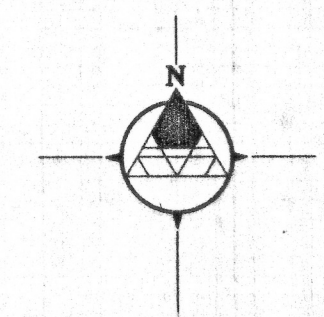
PLOT PLAN BORING LOCATIONS

DAMES & MOORE

PLATE 5

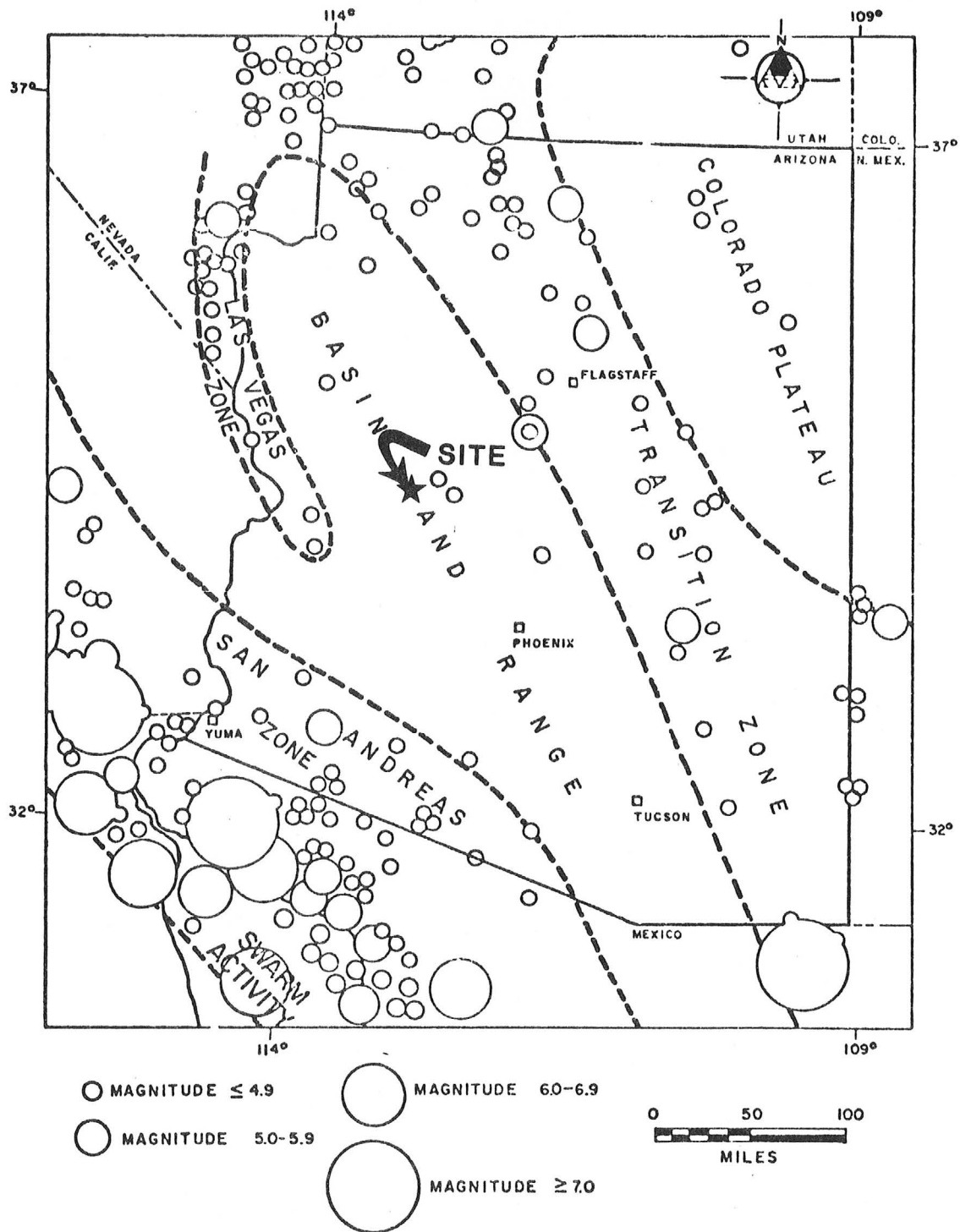


- LEGEND**
-  DRAINAGE AREA FOR FIRST STAGE DAM
 -  DRAINAGE AREA FOR SECOND STAGE DAM
 -  DRAINAGE AREA FOR FINAL STAGE DAM
 -  CREST OF FIRST STAGE DAM
 -  CREST OF FINAL STAGE DAM



DRAINAGE AREA MAP

REFERENCE: TOPOGRAPHY MAP, MINERALS EXPLORATION COMPANY, UNDATED.



EARTHQUAKE EPICENTER MAP

Reference: "Earthquakes in Arizona" by Sumner, FIELDNOTES, Vol. 6,
No. 1, March, 1976, Arizona Bureau of Mines

DAMES & MOORE

