



CONTACT INFORMATION  
Mining Records Curator  
Arizona Geological Survey  
3550 N. Central Ave, 2nd floor  
Phoenix, AZ, 85012  
602-771-1601  
<http://www.azgs.az.gov>  
[inquiries@azgs.az.gov](mailto:inquiries@azgs.az.gov)

The following file is part of the Anderson Mine Collection

### **ACCESS STATEMENT**

These digitized collections are accessible for purposes of education and research. We have indicated what we know about copyright and rights of privacy, publicity, or trademark. Due to the nature of archival collections, we are not always able to identify this information. We are eager to hear from any rights owners, so that we may obtain accurate information. Upon request, we will remove material from public view while we address a rights issue.

### **CONSTRAINTS STATEMENT**

The Arizona Geological Survey does not claim to control all rights for all materials in its collection. These rights include, but are not limited to: copyright, privacy rights, and cultural protection rights. The User hereby assumes all responsibility for obtaining any rights to use the material in excess of "fair use."

The Survey makes no intellectual property claims to the products created by individual authors in the manuscript collections, except when the author deeded those rights to the Survey or when those authors were employed by the State of Arizona and created intellectual products as a function of their official duties. The Survey does maintain property rights to the physical and digital representations of the works.

### **QUALITY STATEMENT**

The Arizona Geological Survey is not responsible for the accuracy of the records, information, or opinions that may be contained in the files. The Survey collects, catalogs, and archives data on mineral properties regardless of its views of the veracity or accuracy of those data.

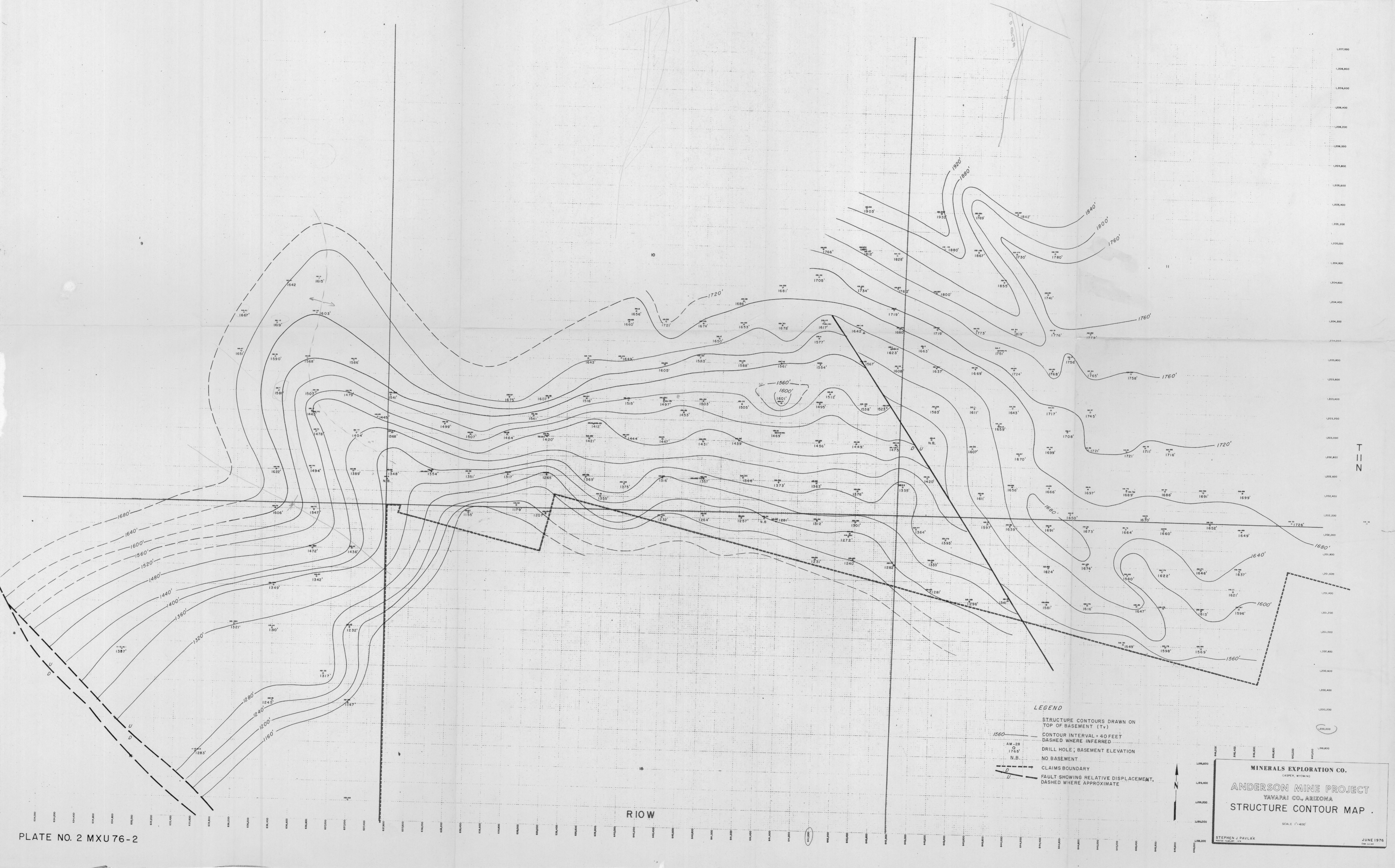


PLATE NO. 2 MXU 76-2

**LEGEND**  
 STRUCTURE CONTOURS DRAWN ON TOP OF BASEMENT (Tv)  
 CONTOUR INTERVAL = 40 FEET  
 DASHED WHERE INFERRED  
 DRILL HOLE; BASEMENT ELEVATION  
 NO BASEMENT  
 CLAIMS BOUNDARY  
 FAULT SHOWING RELATIVE DISPLACEMENT, DASHED WHERE APPROXIMATE

**MINERALS EXPLORATION CO.**  
 CASPER, WYOMING  
**ANDERSON MINE PROJECT**  
 YAVAPAI CO., ARIZONA  
**STRUCTURE CONTOUR MAP**  
 SCALE 1"=400'  
 STEPHEN J. PAVLAK  
 JUNE 1976

T  
I  
N

RIOW

Pulp Samples: Master Index

Anderson Mine Project

<u>Hole #</u>	<u>Invoice #</u>	<u>Intervals</u>
AM-113c	19491	343-44
AM-7c	" "	17'-22', 95-105
AM-17c	19491	104-108, 131-166, 193-206

---

AM 26c	19661	602-608, 621-627 629-632, 634-636 637-640, 737-38, 739-40 742-43
--------	-------	---

AM 49c	19661	613-615, 616-624, 630-638
AM 13c	19609	115-116, 119-141
AM 18c	Same	279-280, 281-291, 293-313

<u>Hole</u>	<u>Invoice #</u>	<u>Interval</u>
AM-149c	19776	350 - 353, 380 - 411
AM 51c	19776	394 - 448, 461 - 471
AM 1c	20668	63-64.5, 109-109.5, 116-117
AM 7c	Same	96-97, 102-107
AM 13c	Same	116 - 119
AM 17c	Same	130-131, 134-136, 137-138, 198-199 162-163, 164-165, 166-167, 192-193
AM 18c	20068	280-281, <del>291-292, 293-294, 295-296</del> 291-292, 293-294, 295-296 300-301, 314-315

hole

Invoice #

Internal

AM 26c

20068

601-602, 627-628, 632-633  
721-721.3

AM 49c

Same

609-612, 629-630

AM 79c

Same

40-41, 44-45, 48-~~51~~,  
59-60, 61-62

AM-113c

20068

274-278, 303-304, 316-317  
344-345

AM 119c

Same

30-31, 121-123, 130-131

A-135c

Same

377-378, 389-390, 441-462, 465-466

AM 149c

20068

411-412

Hole

Invoice #

Interval

AM 16c

15935

292.5 - 294, 299 - 312.5

246 - 247.5, 249.5 - 251

~~247.5 - 248.5~~ 251.5 - 252

267.5 - 268.5, 270 - 271

287.5 - 288, 289 - 289.5

AM 26c

20023

619 - 621, 628 - 629, 633 - 634

640 - 641, 718 - 720, 722.5 - 723

725 - 727, 733 - 737, 738 - 739

740 - 742, 743 - 744, 641 - 642,

624 - 625

Hole

Invoice #

Interval

AM 135C

19302

378-379, 382-389  
457-461, 462-465  
466-477

AM 79C

SAME

41-44, 45-48, 58-59  
60-61, 62-64

AM 119C

SAME

31-32, 34-35, 113.5-115  
116-117, 118-126, 123-124  
131-134

AM 113C

19302

272-274, 278-281, 285-286  
295-303, 317-320, 339-343