



CONTACT INFORMATION
Mining Records Curator
Arizona Geological Survey
3550 N. Central Ave, 2nd floor
Phoenix, AZ, 85012
602-771-1601
<http://www.azgs.az.gov>
inquiries@azgs.az.gov

The following file is part of the Anderson Mine Collection

ACCESS STATEMENT

These digitized collections are accessible for purposes of education and research. We have indicated what we know about copyright and rights of privacy, publicity, or trademark. Due to the nature of archival collections, we are not always able to identify this information. We are eager to hear from any rights owners, so that we may obtain accurate information. Upon request, we will remove material from public view while we address a rights issue.

CONSTRAINTS STATEMENT

The Arizona Geological Survey does not claim to control all rights for all materials in its collection. These rights include, but are not limited to: copyright, privacy rights, and cultural protection rights. The User hereby assumes all responsibility for obtaining any rights to use the material in excess of "fair use."

The Survey makes no intellectual property claims to the products created by individual authors in the manuscript collections, except when the author deeded those rights to the Survey or when those authors were employed by the State of Arizona and created intellectual products as a function of their official duties. The Survey does maintain property rights to the physical and digital representations of the works.

QUALITY STATEMENT

The Arizona Geological Survey is not responsible for the accuracy of the records, information, or opinions that may be contained in the files. The Survey collects, catalogs, and archives data on mineral properties regardless of its views of the veracity or accuracy of those data.

Received one

CAMARO

Lic # T Z M 065

From Minerals
Exploration

Company

Michael A. Jitt

Holmes Wrecker 13

Shamrock Phoenix 257 ~~1668~~

Anderson Mine Coxing Week 10/10/17 - 10/17/17

Mon 10th Oct → Drop Core Boxes at Rigs & left notes. Went to Wickenburg & Mett John Galbreath (Utah Timberline) and (Hanso Bedlerum) Gesellschaft Brumhilde and gave AM Tour. Hot springs Sibiu? Boyles completed AM 336. Shelton waiting on core barrel.

Tue 11th Oct → Forest Howland Ramparts Visited for Palmetto Ranch Water Refined G.D. Boyles on AM 345C Broke down at 330. Shelton ^{completed} 373C.

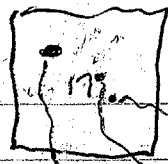
Wed Oct 12 - Boyles Drilled Past first Core Interval on AM 345C. Redrilling. Mr Wallace Anderson (Christensen) came out to see plugged up bit. Shelton moved to AM 337.

Photos Roll 1 / Souaro

1. Looking West  Flat top toward flat top.

2. Minor? Fault at 6 ← Upper Cgl. → Near Road Saddle

3. Minor? Fault at 6 ← Upper Cgl. → " " "



N-S EW

Exxon Holes

26	31	17	Slt Grn Sndy
3000	1900	17	Slt Grn
3600	1000	17	SS Thin Slt Grn
2200	4300	18	Cal TL Sndy Grn to Tan ^{at base} cross SS
19	27	18	Sndy Trace Grn silt Tan ^{at base} silt
0800	0800	18	Trace Carb in Tan Sndy Slt 220-200
0100	2500	8 or 10	SS silt silt Grn Tan ^{tan} ^{tan} ^{tan} ^{tan}
1300	?	18?	More Typical Lake Beds Grn w/ limy silt ^{tan}
1500	3800	8 or 18	Lake Beds Trace Carb? ^{minerals}
0500	3800	8 or 18	
4800	4100	17	Lake Beds
5200	4900	17	" "
4000	5000	17	" "
1000	5000	8 or 18	Thin Carb Intbed in Grn silt Typ lake

UNIVERSAL DRILLING

FOOTAGE RATE :

9610 x 3⁰⁰ / FT

28,830⁰⁰

ROCK CLAUSE :

NO COST ANTICIPATED

DRILL SUPPLIES @ COST

\$ 10,000⁰⁰

WATER TRUCK 25⁰⁰ / DAY

\$ 1,850⁰⁰

MOVE TIME 36 HOLES x 250⁰⁰

9,000⁰⁰

PER DIEM 60⁰⁰ / DAY / CREW x 74 DAYS

4,440⁰⁰

CORING 2215 FT x 75⁰⁰ / HR / 3 FT / NR

55,375⁰⁰

TOTAL COST

109,495

COBRA DRILLING

COREING	96 ⁰⁰ /HR x 738 1/3	70,880 ⁰⁰
DRILL DOWN TO CORE	9610 FT @ 3 ⁰⁰ /FT	28,830 ⁰⁰
LIVING EXPENSE		<u>2,220⁰⁰</u>

TOTAL COST

MUD BITS + MATERIALS

	\$ 101,930 ⁰⁰
+ MUD + BITS AT COST	10 000
	<u>111,930⁰⁰</u>

LONG YEAR

OVERBORDEN DRILLING 0-20' 6³⁰/FT
X 36 HOLES

\$ 4680⁰⁰

DRILL DOWN TO CORE POINT

VOLCANICS ASSUME 300'

@ \$6.40/FT

\$ 1,920⁰⁰

SEDIMENTS

9610' - 300' - 720'

8590' x 5³⁰/FT

\$ 45,527⁰⁰

CORE

2015' @ 1940/FT = \$ 42,971⁰⁰

ASSUME NO CEMENTING OR CASING

MOVING 1HR/HOLE 36 HOLES 35⁰⁰/HR =

\$ 1,396²⁰

SURVEY (LOG) TIME 1HR/HOLE 35⁰⁰/HR = \$ 1,396²⁰

WATER TRUCK 500⁰⁰/MO 3.7 MONTHS
~~37400~~

1850⁰⁰

MILAGE @ 30¢/MILE 30MILES/DAY
74 DAYS

666⁰⁰

SUPPLIES

10,000⁰⁰

TOTAL

\$ 110,406⁴⁰

ASSUMPTIONS:

3 FT / HR CORING
2215 FT CORE = 738 1/3 HR

ASSUME ALL CORE POINTS

ARE LESS THAN 300'

TOTAL DRILL CORE DOWN TO CORE 9610
74 DAYS

3 MAN CREW

1 RIG

PROBE TIME @ 1 HR / MOCE

74 DAYS

20 DAYS / MONTH

MATERIALS \$10,000

CORING

BIDS

TO DATE

ASSUMPTIONS:

3 FT / HR CORING
2215 FT CORE = 738 1/3 HR

ASSUME ALL CORE POINTS

ARE LESS THAN 300'

TOTAL DRILL CORE DOWN TO CORE 9610

74 DAYS

3 MAN CREW

1 RIG

PROBE TIME @ 1 HR / MOLE

74 DAYS

20 DAYS / MONTH

MATERIALS \$10,000

COBRA DRILLING

COREING	96 ⁰⁰ /HR x 738 1/3	70,880 ⁰⁰
DRILL DOWN TO CORE	9610 FT @ 3 ⁰⁰ /FT	28,830 ⁰⁰
LIVING EXPENSE		<u>2,220⁰⁰</u>

TOTAL COST

MUD BITS + MATERIALS

	\$ 101,930 ⁰⁰
+ MUD + BITS AT COST	10,000
	<u>111,930⁰⁰</u>

UNIVERSAL DRILLING

FOOTAGE RATE :

9610 x 3⁰⁰ / FT

28,830⁰⁰

ROCK CLAUSE :

NO COST ANTICIPATED

DRILL SUPPLIES @ COST

\$ 10,000⁰⁰

WATER TRUCK 25⁰⁰ / DAY

\$ 1,850⁰⁰

MOVE TIME 36 HOLES x 250⁰⁰

9,000⁰⁰

PER DIEM 60⁰⁰ / DAY / CREW x 74 DAYS

4,440⁰⁰

CORING 2215 FT x 75⁰⁰ / HR / 3 FT / HR

55,375⁰⁰

TOTAL COST

109,495

BOYLES BROTHERS

1	MOBILIZATION + DEMOB.		500 ⁰⁰
2	DRILL TO CORE POINT		
		9610 @ 3 ¹⁰	29,791 ⁰⁰
3.	CORING	70 ⁰⁰ /HR	51,683 ³¹
4.	PROBE TIME	36 HOLES 1 HR/HOLE	
		55 ⁰⁰ /HR	1,980 ⁰⁰
	SET UP TIME	36 HOLE 1HR/HOLE	
		55 ⁰⁰ /HR	1,980 ⁰⁰
5	WATER TRUCK	390 ⁰⁰ /mo	
		3.7 MONTHS	1,443

\$ 87,377³¹
 + BITS MUD
 CORE BOXES ECT +
 15%

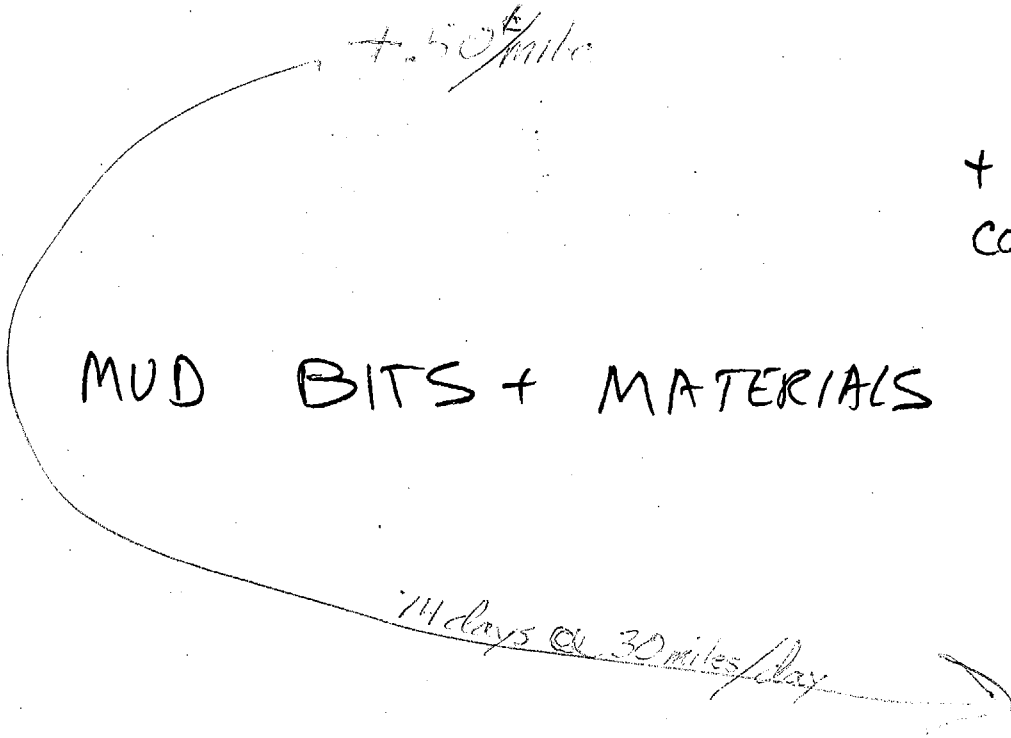
MUD BITS + MATERIALS

10000
 1500

98,877³¹

1110

99,987³¹



+ .50⁰⁰/mile

LONG YEAR

OVERBORDEN DRILLING 0-20' 6³⁰/FT
X 36 HOLES

\$ 4680⁰⁰

DRILL DOWN TO CORE POINT

VOLCANICS ASSUME 300'

@ \$6.40/FT

\$ 1,920⁰⁰

SEDIMENTS

9610' - 300' - 720'

8590' X 5³⁰/FT

\$ 45,527⁰⁰

CORE

2015' @ 1940/FT = \$ 42,971⁰⁰

ASSUME NO CEMENTING OR CASING

MOVING 1HR/HOLE 36 HOLES 35⁰⁰/HR =

\$ 1,396⁰⁰

SURVEY (LOG) TIME 1HR/HOLE 35⁰⁰/HR = \$ 1,396⁰⁰

WATER TRUCK 500⁰⁰/MO 3.7 MONTHS
~~3 MONTHS~~

~~1500⁰⁰~~
1850⁰⁰

MILAGE @ 30¢/MILE 30 MILES/DAY
74 DAYS

666⁰⁰

SUPPLIES

10,000⁰⁰

TOTAL

\$ 110,406⁴⁰

UNIVERSAL DRILLING INC.

(602) 427-3363
YARNELL, ARIZONA 85362

Project _____

Date _____

County _____

State _____

Drill Hole No. _____

Customer _____

Rig Type + No. _____

Drilling and Core Log

RECORD OF DRILLING

Drilling and Core Log			RECORD OF DRILLING		
	Feet	Hr.			
Travel to Job			Move Time-Hole to Hole		CREW
Mobilation			Standby Time		
Rotary Drilling			Reason		
Core Drilling			Repair Time		
Re Drilling			Type		
Reaming			Maintenance Time		
Casing			Travel From Job		
Washing Hole			Water Truck Lds.		
Regain Loss Cir.			Backhoe		
Cementing			Other		
					Driller
					Helper
					Helper
					Helper
					Time On
					Time Off
					Depth
					Depth

Time			Depth			Work Performed (use abbreviations)
From	To	Total	From	To	Total	
Total Above			Total Above			Day Work
						Hrs.
						Standby
						Hrs.

Remarks _____

BIT RECORD	Depth	Time Rotated	Brand	Type	Size	Serial #	Remarks

Qty	Drilling	Qty	Materials	Depth		ROCK TYPE
				From	To	Type of Groundwater Encountered
	Barafos		Drill Foam			
	Caustic Soda		Drispac			
	Cedar Fiber		Hy-Seal			
	Cellex (Hi Vis)		Jelflake			
	Cellex (Reg.)		Kwik Seal (Ex. Fine)			
	CC-16		Kwik Seal (Medium)			
	Con' Det		Q-Broxin			
	Cottonseed		Quik Foam			
	Desco		Quik Gel			
	Dextrid		Soda Ash			
	Dicks Mud Foam					
				Drill No. _____	Signed _____ Geologist	
				Water Truck No. _____	Driller or Pusher	
				Pick Up No. _____	Signed _____	
				Others _____	when starting new hole start new report.	

Cone No	Height	Drill Depth	Cone Intervals	Cone Total
1	10	60	80-120 10-30	60
2	171	625	525-550 570-625 705-735	110
3	130	200	200-215	15
4	11	60	10-30 80-120	60
5	40	60	60-80	20
6	107	260	245-295 335-355 370-385 230-265 330-345	125
7	106	295	175-190 235-275	50
8	158	220	365-455	55
9	141	365	285-310 385-395	90
10	136	300	305-345 380-395 430-445 470-480	95
11	28	380	500-520 540-625 430-525	105
12	50	520	65-130 140-165	95
13	59	430	0-25 45-105	85
14	68	175	145-260	115
15	71	90	390-410 455-465	35
16	75	145	370-390 420-485	85
17	351	430	330-365	35
18	345	400	205-225 240-260 110-125 135-145	40
19	338	330	185-160	25
20	336	220	400-455	55
21	325	120	320-335 365-390	40
22	323	135	70-90 125-155 390-410	50
23	371	400	70-85	20
24	308	70	130-145	15
25	396	105	160-175 190-210 55-70	50
26	414	390	95-120 75-100	40
27	281	160	435-455 490-510 685-700	85
28	286	80	60-85	25
29	258	60		
30	486	615		
31	2	60		
32				

Candle #	Drill Depth	Cone In Ground	Cone Total Foot
³³ 63	190	165-180 15 170-205 15 220-230 10	40
³⁴ 443	315	270-290 20 315-380 65 400-416 16	95
³⁵ 22	580	385-460 15 425-495 50 570-600 30 655-685 30	105
³⁶ 156	520	430-450 20 490-555 65 575-595 20	125

605-620 20
625-645 20

36 Holes 9715 2300

220	20
280	80
15	115
	220
	125
	<hr/>
	over 500 360ft

under 300 7880

over 300 = 1835

John Barnes
Police Plant Act.
Call Courtroom
How Much
get on it

Bob Bennett
lawyers

Chris
Thur Sept. 1
Doubletree

W.A. Schwardua 1 Sept 1

Bob
Hal
Bob King

Footage Rates	Universal 0-300 \$3.00/ft 300-600 \$4.00/ft 600-900 \$5.00/ft	Cobra \$3.00/ft	Harris 0-500 \$3.50/ft 500-1000 \$4.50/ft	Long year 0-200 \$6.50/ft 0-500 \$5.30/ft 500-1000 \$5.80/ft	Joy PR OP PE D O U T B I d i N G	Boyles Bros 0-500 \$3.10/ft 500-750 \$4.00/ft	U 17340 23640 30980 3600	C 29145 10000	H 1620 32742	L 4680 45765 550 2088	B 29000.50 1620
Hourly Rate	100.00/hr	\$96.00/hr	\$125/hr			70/hr + invoice + 10% For Bits.					
Drilling Supplies	Minerals All	Minerals For Coring	Minerals all Tools Pipes + Collars lost on Hourly charged to Minerals	Casing Lost Minerals All + 10%		Casing shoes Minerals Boyles Prices + 15%	19,000		10,000	10,000	10,000
Water	25.00/day/truck		25/hr if over 1.5hr haul	Aux Truck \$25/hr \$500/mo 30¢ mile		\$390/mo. + .50¢/mile	1850				962 1100
Move Time	\$100/hr (after 1st hr?)		125/hr over 1/2 hr	\$35.80/hr 57.40/hr		\$55/hr		3456	4500	2066	1980
Mobilization	\$250 all equipment		\$1,500/Rig one time charge	\$750/Rig + 750/Rig		\$500/Rig	500?		3000	1500	1000
Standby	75/hr		\$100/hr	\$35.80/hr		\$55/hr					
Wash out	1 free if Probe truck on location			57.40		\$70/hr + Invoicing + 10% Bits lost or Damaged					
Substance	\$60/day/crew	\$10/day/man	\$25/day/man				8800	4400	11,100		
Back hoe	\$50/day		Minerals								
Coring	\$75/hr	\$96/hr	\$125/hr	0-500 \$19.40/ft 500-1000 \$19.90/ft		\$70/hr + Invoicing + 10% For Bits	57500	73600	95833		53666
Overbit Springs Core Barrel	Minerals		core Barrel \$25/day Bits Minerals				30,000	10000		44620 10000	10,000
Rigs	1?	1?	2								
Bits	Minerals?	Minerals Coring Cobra Footage	Footage Harris Hourly Minerals Bottom Bits Minerals	Hammer Bit \$10/hr							
Penetration			Hourly if below Footage Rate								

Turn High Vol on. inches diam
 Calibration coffee
 Filter Paper on Screen
 Rubber Gasket
 500
 Plate on High Vol
 Base
 Tube
 Counter
 Plastic Tube
 Magnometer
 427-3421
 1231
 120601
 159295
 12316
 109328.50

Cave Hole #	Drill Depth	Cave Intervals	Cave Total
10	60	80-120 10-30	60
171	625	525-550 570-625 705-735	110
130	200	200-215	15
11	60	10-30 80-120	66
40	60	60-80	20
107	260	245-295 325-355 370-385 230-265 330-345	125
106	295	175-190 235-275	50
158	220	365-435	55
141	365	285-310 385-395	90
136	300	305-365 380-395 430-445 470-480	95
28	380	500-520 540-625 430-525	100
50	520	65-130 140-165	105
59	430	0-25 45-105	95
68	175	145-260	85
71	90	390-410 455-465	115
75	145	370-390 420-485	35
351	430	330-365	85
345	400	205-225 240-260	35
338	330	110-125 135-145	40
336	220	135-160	25
325	120	400-455	25
323	135	320-335 365-390	55
371	400	70-90	40
373	350	125-155	50
396	105	340-410	20
414	390	70-85	20
308	70	130-145 160-175 190-210	15
281	160	55-70 95-120	50
286	80	15-30 75-100	40
258	60	435-455 490-520	40
486	615	665-780	85
2	60	60-85	25

Core No	Drill Depth	Core Interval	Core total feet
63	190	145-180 190-205 220-230 270-290 315-380 400-418 385-440 425-495 575-595 605-620 625-645	15 10 10 20 65 10 15 50 20 20
443	315	590-688 688-700 430-450 490-555 575-595 605-620 625-645	30 10 15 65 20 20
22	580		105
156	520		125

36 Holes 9715 2300

220
280
15
90
50
100
30
100
130
130
220
80
65
325
OVER 300 = 1835

20
80
115
20
125
OVER 500 360ft

under 300 7880

John Barnes
Hydric Plant Act.
Call Countryman
Hours Much
get on it

Bob
Hal
Bob King
Bennitt
Lawyers

LA. Schedule 1 Sept 1
Thur Sept. 1
Doubletree
Chris

Anderson Mine TD's Hole Drilled 1977 Total This Page 87935 feet

1	34	67	100	133	166	199	232	265	298	331	364	397	430	463	496
2	35	68	101	134	167	200	233	266	299	332	365	398	431	464	497
3	36	69	102	135	168	201	234	267	300	333	366	399	432	465	498
4	37	70	103	136	169	202	235	268	301	334	367	400	433	466	499
5	38	71	104	137	170	203	236	269	302	335	368	401	434	467	500
6	39	72	105	138	171	204	237	270	303	336	369	402	435	468	501
7	40	73	106	139	172	205	238	271	304	337	370	403	436	469	502
8	41	74	107	140	173	206	239	272	305	338	371	404	437	470	503
9	42	75	108	141	174	207	240	273	306	339	372	405	438	471	504
10	43	76	109	142	175	208	241	274	307	340	373	406	439	472	505
11	44	77	110	143	176	209	242	275	308	341	374	407	440	473	506
12	45	78	111	144	177	210	243	276	309	342	375	408	441	474	507
13	46	79	112	145	178	211	244	277	310	343	376	409	442	475	508
14	47	80	113	146	179	212	245	278	311	344	377	410	443	476	509
15	48	81	114	147	180	213	246	279	312	345	378	411	444	477	510
16	49	82	115	148	181	214	247	280	313	346	379	412	445	478	511
17	50	83	116	149	182	215	248	281	314	347	380	413	446	479	512
18	51	84	117	150	183	216	249	282	315	348	381	414	447	480	513
19	52	85	118	151	184	217	250	283	316	349	382	415	448	481	514
20	53	86	119	152	185	218	251	284	317	350	383	416	449	482	515
21	54	87	120	153	186	219	252	285	318	351	384	417	450	483	516
22	55	88	121	154	187	220	253	286	319	352	385	418	451	484	517
23	56	89	122	155	188	221	254	287	320	353	386	419	452	485	518
24	57	90	123	156	189	222	255	288	321	354	387	420	453	486	519
25	58	91	124	157	190	223	256	289	322	355	388	421	454	487	520
26	59	92	125	158	191	224	257	290	323	356	389	422	455	488	521
27	60	93	126	159	192	225	258	291	324	357	390	423	456	489	522
28	61	94	127	160	193	226	259	292	325	358	391	424	457	490	523
29	62	95	128	161	194	227	260	293	326	359	392	425	458	491	524
30	63	96	129	162	195	228	261	294	327	360	393	426	459	492	525
31	64	97	130	163	196	229	262	295	328	361	394	427	460	493	526
32	65	98	131	164	197	230	263	296	329	362	395	428	461	494	527
33	66	99	132	165	198	231	264	297	330	363	396	429	462	495	528

Core

Venture
Dames + Moore 1977 DWH Holes

Am 2 c	85'
Am 10 c	310
Am 22 c	465
Am 28 c	415
Am 40 c	80
Am 63 c	235
Am 67 c	140
Am 68 c	165
Am 71 c	100
Am 88 c	100
Am 129 c	395
Am 136 c	390
Am 166 c	190
Am 107 c	350?
Am 156 c	640
Am 171 c	625
Am 258 c	100
Am 281 c	210
Am 286 c	120
Am 308 c	85
Am 323 c	155
Am 325 c	150
Am 336 c	260
Am 338 c	375
Am 345 c	485
Am 371 c	455

Am 373 c	185
Am 384 c	460
Am 396 c	150
Am 419 c	580
Am 443 c	495
Am 486 c	520
Am 351 c	470

Coring Program 9940 ft

97,875 ft Total

Am 110 c D+M	175'
Am 324 c D+M	235
Am 322 c D+M	150
Am 170 c D+M	140'
Am 306 c D+M	100'

Dames + Moore Coring Program 800 ft

98,675 ft Total

Am 388 c V	415
Am 22 V	300?

Venture Drilling For Holes 715 ft
No Charge

99 390 ft Total
For 1977

99 415
3/11/77

Cave Hole #	Drill Depth	Cave Intervals	Cave Total
10	60	80-120 10-30	60
171	625	525-550 570-625 705-735	110
130	200	200-215	15
11	60	10-30 80-120	60
40	60	60-80	20
107	260	245-295 325-355 370-385 230-265 330-345	125
106	295	175-190 225-275	50
158	220	365-455	55
141	365	285-310 385-395	90
136	300	305-365 380-395 430-445 470-480	95
28	380	500-520 540-625 430-525	100
50	520	65-130	105
59	430	140-165	95
68	175	0-25 45-105	85
71	90	145-260	115
75	145	390-410 455-465	35
351	430	370-390 420-485	85
345	400	330-365	35
338	330	205-225	40
336	220	240-260 110-125 135-145	25
325	120	195-160	25
323	135	400-455	55
371	400	320-335 365-390	40
373	350	70-90	50
396	105	125-155	20
414	390	340-410	15
308	70	70-85	50
281	160	130-145 160-175 190-210	40
286	80	55-70 75-120	40
258	60	15-30 75-100	40
486	615	435-455 490-520 665-700	85
2	60	60-85	25

Case No #	Drill Depth	Core Interval	Core Total Feet
63	190	145-180 140-230 220-240	40
443	315	315-380 400-416 385-460 425-495	95
22	580	570-600 555-600 430-450 490-555 575-595	105
156	520	605-620 625-645	125

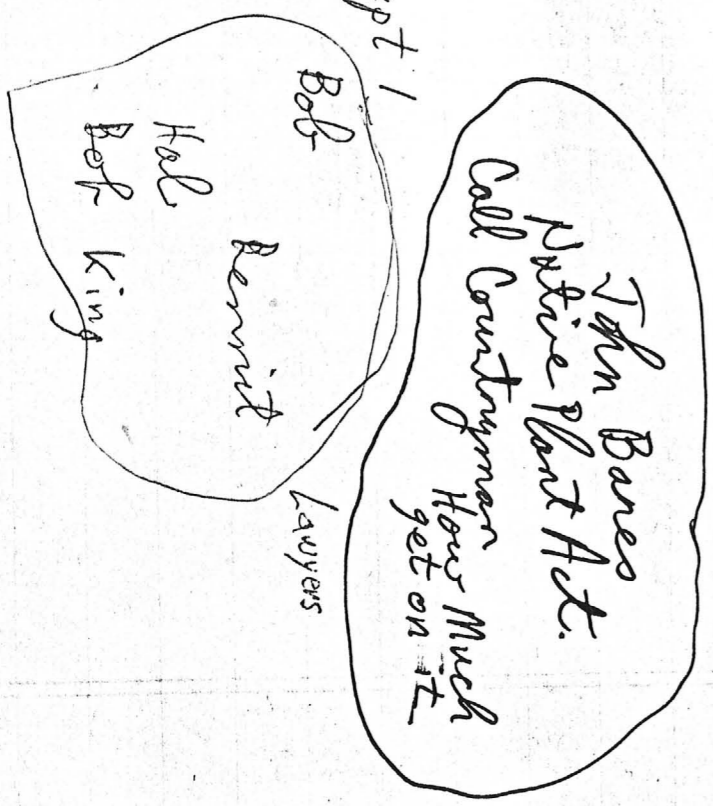
36 Holes 9715 2300

220
 280
 15
 90
 50
 100
 30
 100
 130
 130
 220
 80
 65
 325
 over 300 = 1835

20
 80
 115
 20
 125
 over 500 = 360ft

under 300 7880

LA. Schedule 1 Sept 1



Chris
 Thu Sept. 1
 Doubletree

Coral Terrace

433-438

AM 156c

4' @ .0351

.0045
.075
.038
.1405

~~450-452~~ ~~453-454~~ ~~455-456~~ ~~457-458~~ ~~459-460~~

496-499 3' @ .0717

501-504 3' @ .0307

156c

522-525 3' @ .0233

523-525 2' @ .0285

540-545 5' @ .0745

582-585 3' @ .0380

625-627 2' @ .0506

~~628-630~~ ~~631-633~~ ~~634-636~~ ~~637-639~~ ~~640-642~~

AM 129c

281-284 3' @ .0282

328-334 6' @ .0764

129c

345-348 3' @ .0547

352-355 3' @ .2147

371.4-376.3 5' @ .0316 372.2-374.5 Missing?

~~375-377~~ ~~378-380~~ ~~381-383~~ ~~384-386~~ ~~387-389~~ ~~390-392~~ ~~393-395~~ ~~396-398~~ ~~399-401~~

1111
11

AM 323c

152.2 - 152.8 .5' @ .5480

323c

142.5 147.6 5' @ .0604
~~142.5~~ - ~~147.6~~ ~~AM 323c~~
148.5 - 152.5 4' @ .0615
AM 323c

~~142.5 147.6 5' @ .0604~~
~~148.5 - 152.5 4' @ .0615~~
AM 323c

AM 171c

537-540 3' @ .0310

171c

543-545 2' @ .0365

556-559 3' @ .0273

574-579 3' @ .0467

AM 371c

371c

439-449 10' @ .1644

428-439 11' @ .1037

~~417-427~~
407-410 3' @ .0458 .0478

411-416 4' @ .0421 .0437

~~407-410~~
~~411-416~~

28c { 399-401 AM 28c
2' @ .0600 or 396-401 5' @ .0394

510-513 AM 486c
3.5 @ .1015

444-448 4' @ .0570

494-497 3' @ .0372

501-504 3' @ .0297

AM 40c

69-71 2' @ .0338

AM 308c

72-75 3' @ .0240 or 2' @ .0310

AM 325c

113-116 3' @ .0540

5' @ .6957

AM 384c

362-364 2' @ .2360

366-368 2' @ .0315

3' @ .1920

437-439 2' @ .025

443-445 2' @ .0590

~~AM 384c~~

AM 152c'

152c' { 127-129 2' @ .0270

~~~~~

AM 338c'

330-333 3' @ .0250

337-340 3' @ .0280

345-355 10' @ .0797

~~10' @ .0797~~

~~~~~

AM 373c

373c { 368-374 6' @ .0524

378- under cut off

~~~~~

AM 388c

388c { None to cut off

~~~~~

AM 127c

127c { None to cut off

~~~~~

AM 63c

63c { 191-198 7' @ .0527

219-222 3' @ .0543

~~10' @ .0527~~

~~~~~

AM 443c

443c { 275-277 2' @ .0250

319-324 5' @ .0948

328-331 3' @ .0257

~~340~~ 346 6' @ .0612

357-362 5' @ .0564

371-377 6' @ .0333

~~10' @ .0948~~
~~10' @ .0564~~

~~~~~

AM 136c

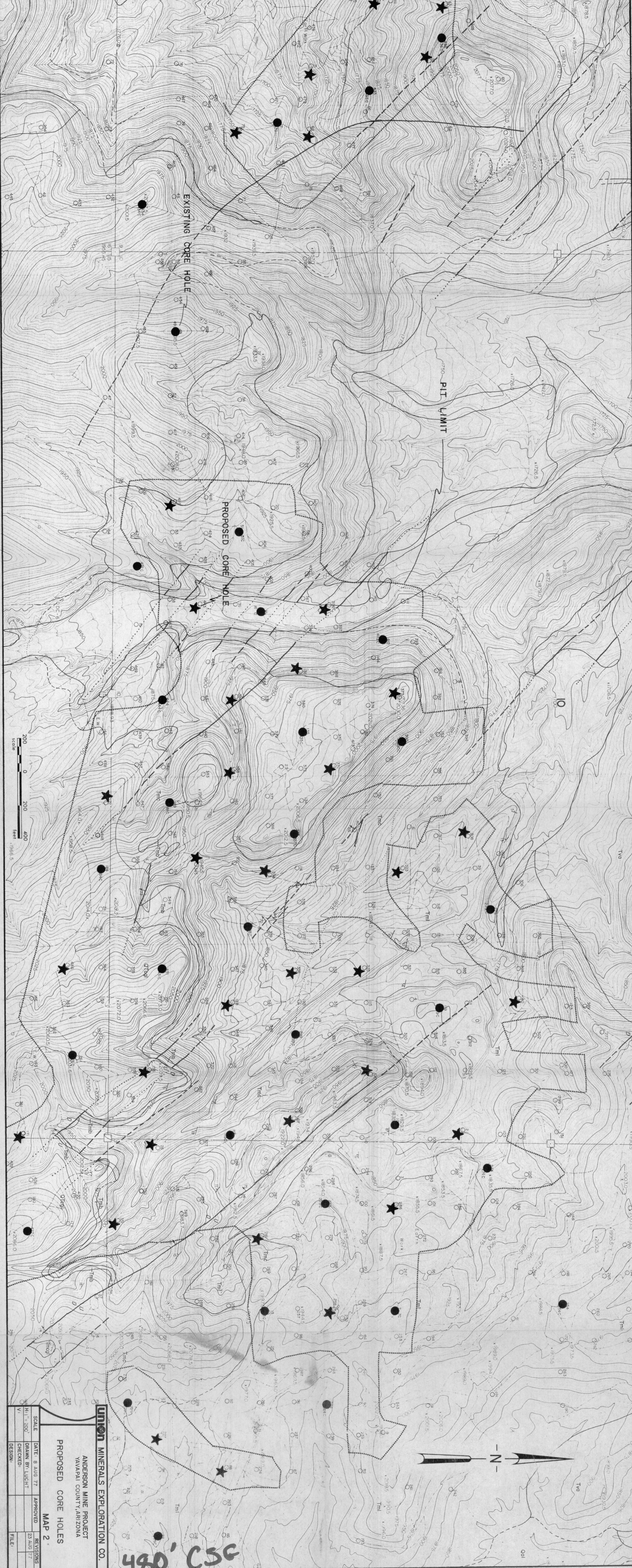
|         |      |       |                 |
|---------|------|-------|-----------------|
| 299-303 | 4' @ | .0310 | <del>136c</del> |
| 336-344 | 8' @ | .0462 | <del>136c</del> |
| 352-360 | 8' @ | .1020 | <del>136c</del> |
| 369-378 | 9' @ | .1417 | <del>136c</del> |

~~~~~

AM ~~336c~~ 336c

213-217 4' @ .0480

253.5-257 3.5' @ .0369

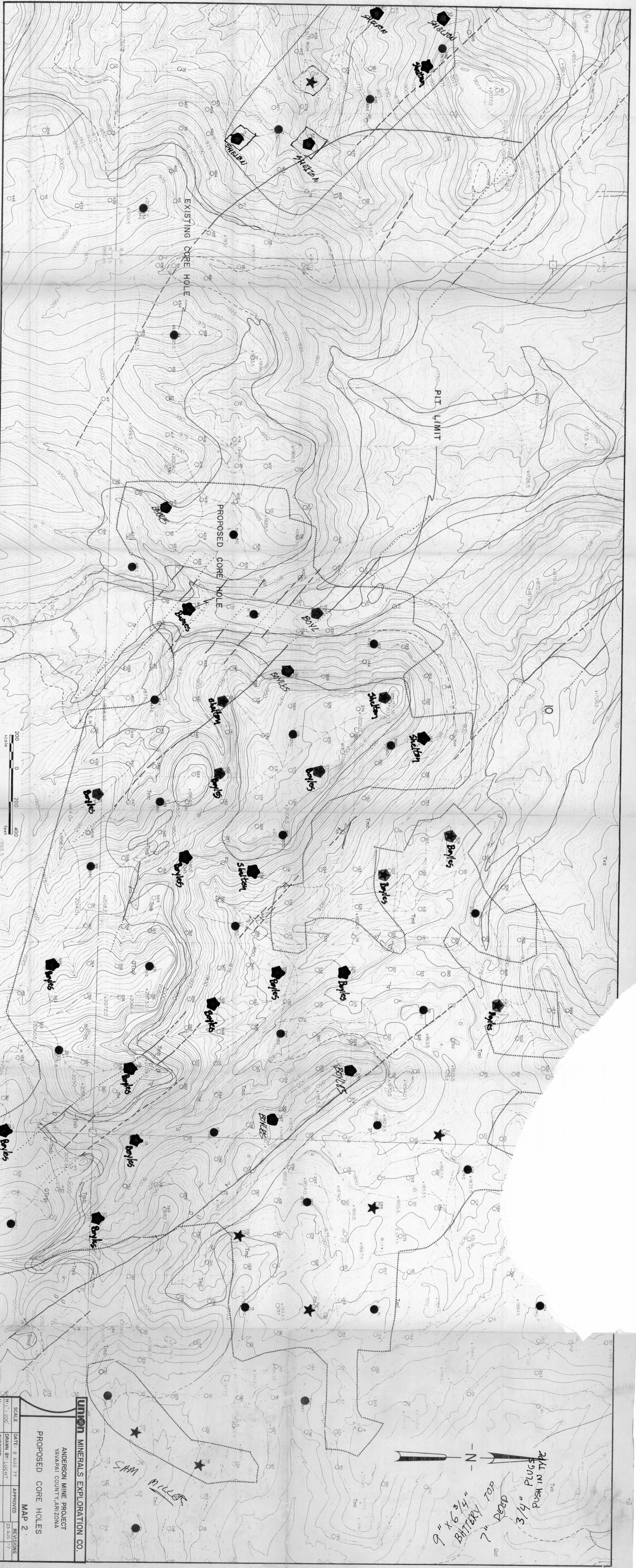


UNION MINERALS EXPLORATION CO.

ANDERSON MINE PROJECT
YAVAPAI COUNTY, ARIZONA

PROPOSED CORE HOLES
MAP 2

SCALE	DATE	APPROVED	REVISIONS
H: 1" = 200'	8 AUG 77		
V: 1" = 200'			
DESIGN:	DRAWN BY: LUCHT	CHECKED:	23 AUG 77
			FILE:



200 0 200 400
 scale
 feet
 1965.5

9" x 6 3/4" BATTERY TOP
 7" DEEP
 3/4" PLUG
 2 1/2" N HEAD
 PUG 172

UNION MINERALS EXPLORATION CO.	
ANDERSON MINE PROJECT YAVAPAI COUNTY, ARIZONA	
PROPOSED CORE HOLES MAP 2	
SCALE	DATE: 8 AUG 77
H1 = 200	DRAWN BY: LUCHT
V1	CHECKED:
DESIGN:	APPROVED:
FILE:	REVISIONS:
	23 AUG 77