

LEGEND

STRUCTURE CONTOURS DRAWN ON
 1/8" OF BASEMENT (11')

CONTOUR INTERVAL - 40 FEET

DAshed WHERE INFERRED

DRILL HOLE, BASEMENT ELEVATION

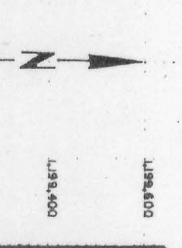
N.B. - NO BASEMENT

CLAMS BOUNDARY

FAULT SHOWING RELATIVE DISPLACEMENT,
 DASHED WHERE APPROXIMATE

AVERAGE DEPTH SURFACE - *Beschowitz* (571)

108 Miles out of 204



MINERALS EXPLORATION CO.
 ANDERSON MINE PROJECT
 YAVAPAI CO., ARIZONA

STEPHEN J. PALUX
 ENGINEER

SCALE 1" = 400'

JUNE 1978

T I N



R.I.O.W.

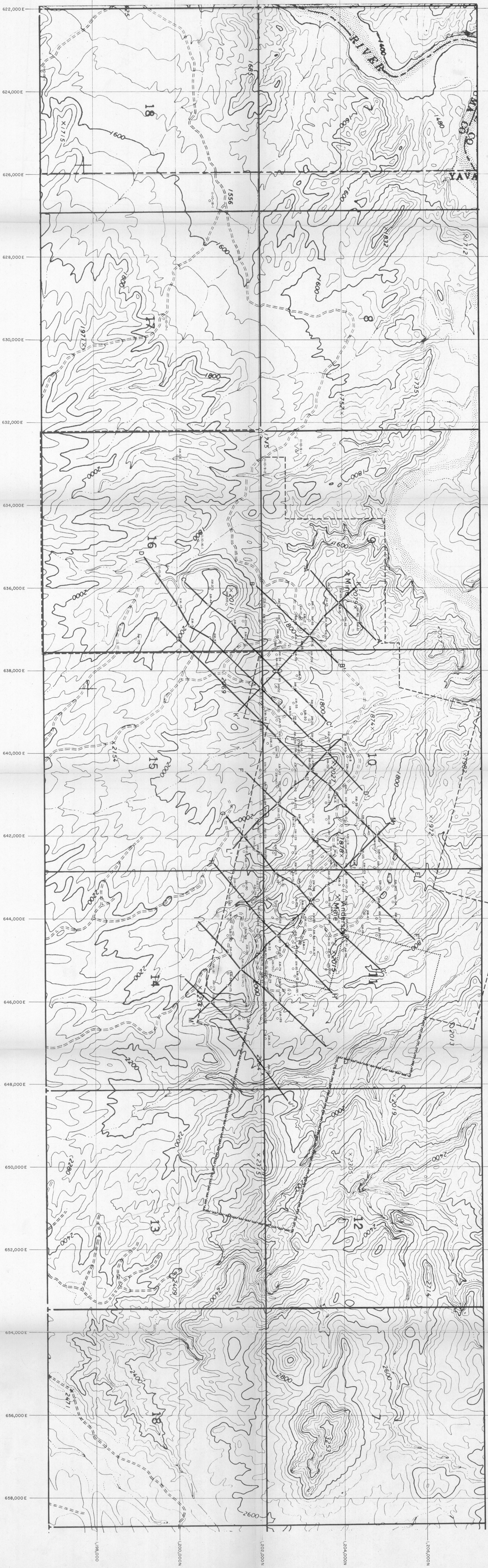
LEGEND

- STRUCTURE CONTOURS DRAWN ON TOP OF MARKER BED
- CONTOUR INTERVAL - 100 FEET
- DOTTED WHERE INFERRED
- DASHED WHERE MARKER HORIZON ELEVATION
- NORTHERN LIMIT OF MARKER BED
- CLAIMS BOUNDARY
- FAULT SHOWING RELATIVE DISPLACEMENT - DASHED WHERE APPROXIMATE

ANDERSON MINE PROJECT
 YAVAPAI CO., ARIZONA
 STRUCTURE CONTOUR MAP
 SCALE 1" = 400'

JOHN S. LIVING
 CONSULTING MINING ENGINEER
 JUNE, 1976

T I N



MINERALS EXPLORATION CO.
CASPER, WYOMING

ANDERSON MINE PROJECT
YAVAPAI CO., ARIZONA

CROSS SECTION INDEX

SCALE 1" = 800'

STEPHEN J. PAWLAK

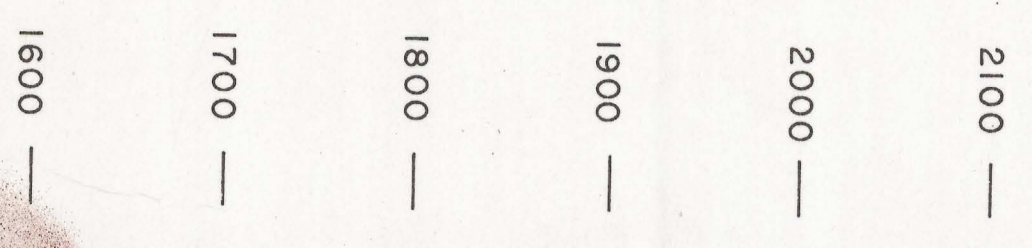
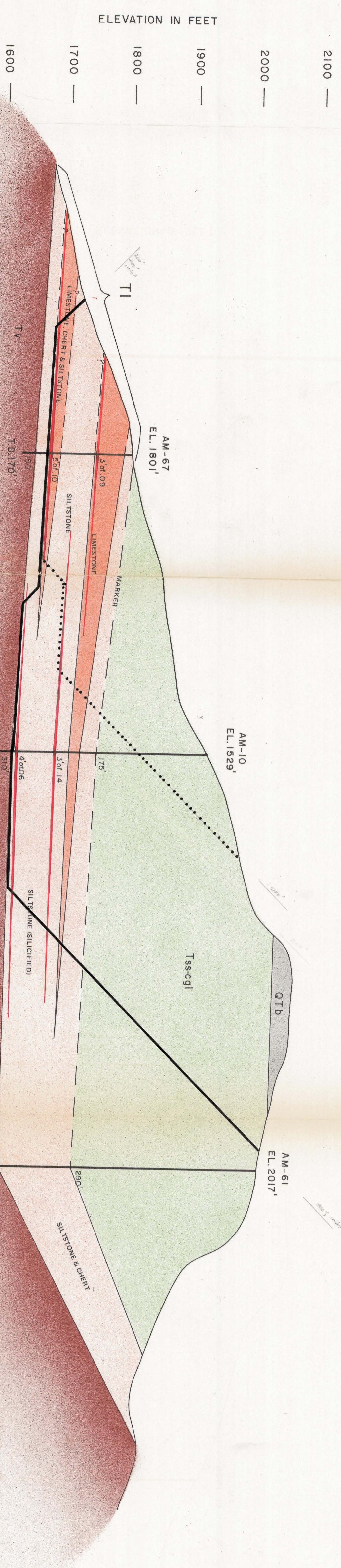
JUNE 1976
258-1100

T
I
N

SW
A

NE
A

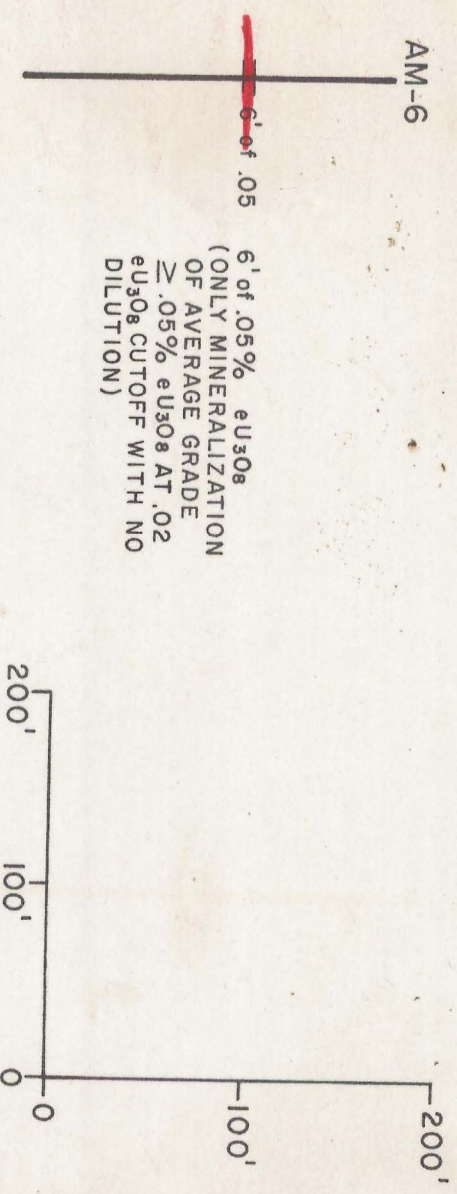
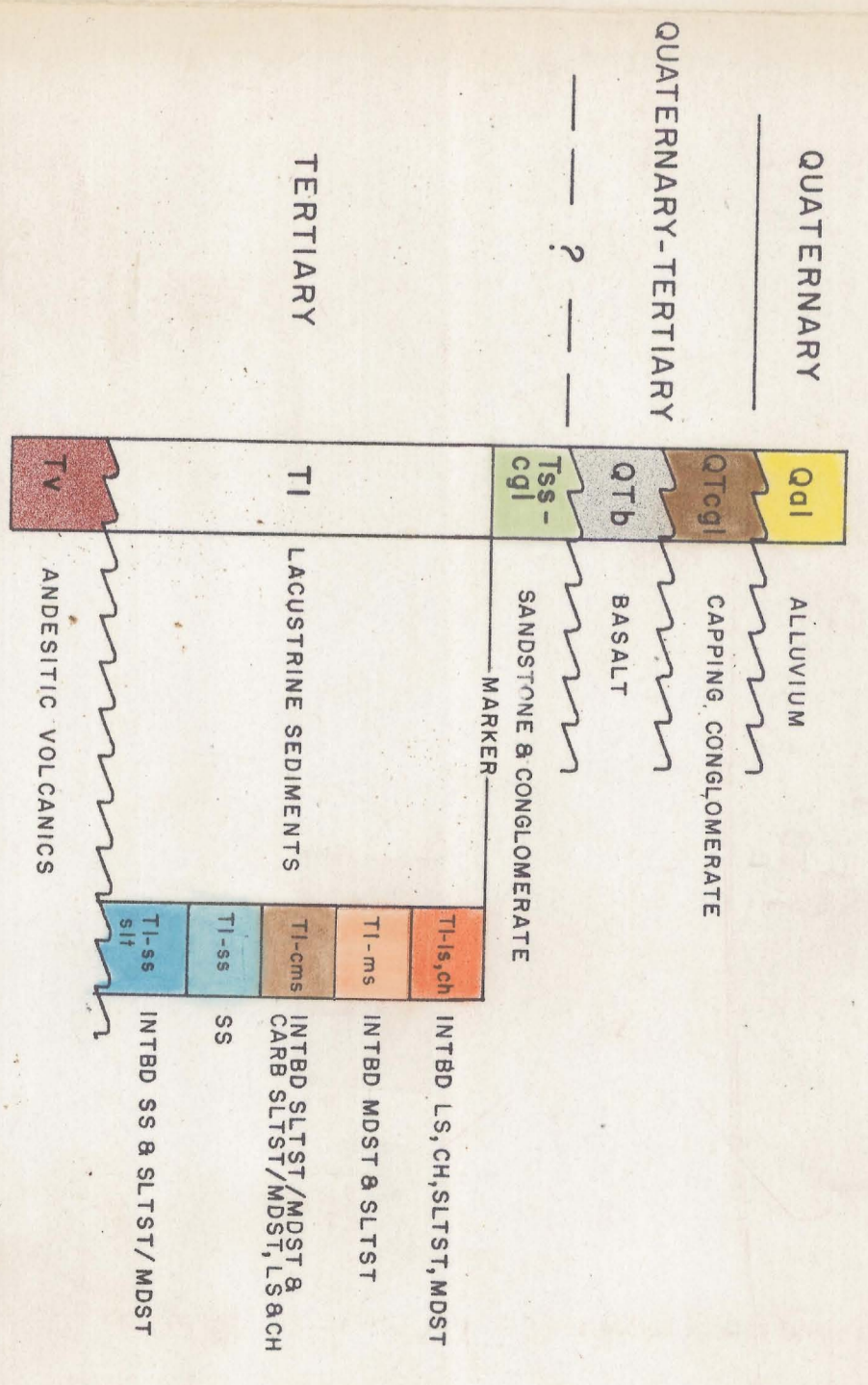
LOOKING NW



..... 200' DEPTH OPEN PIT
 - - - - 400' DEPTH OPEN PIT
 - - - - APPROX. 800' DEPTH OPEN PIT

UNITED PIT BOUNDARIES CONFORM TO SYMBOLS FOR DEEPER PIT TRACES PREVIOUSLY

LEGEND



REPORT MXU 2 76

MINERALS EXPLORATION CO.
CASPER, WYOMING

PLATE NO. 4

ANDERSON MINE CROSS-SECTION A-A'

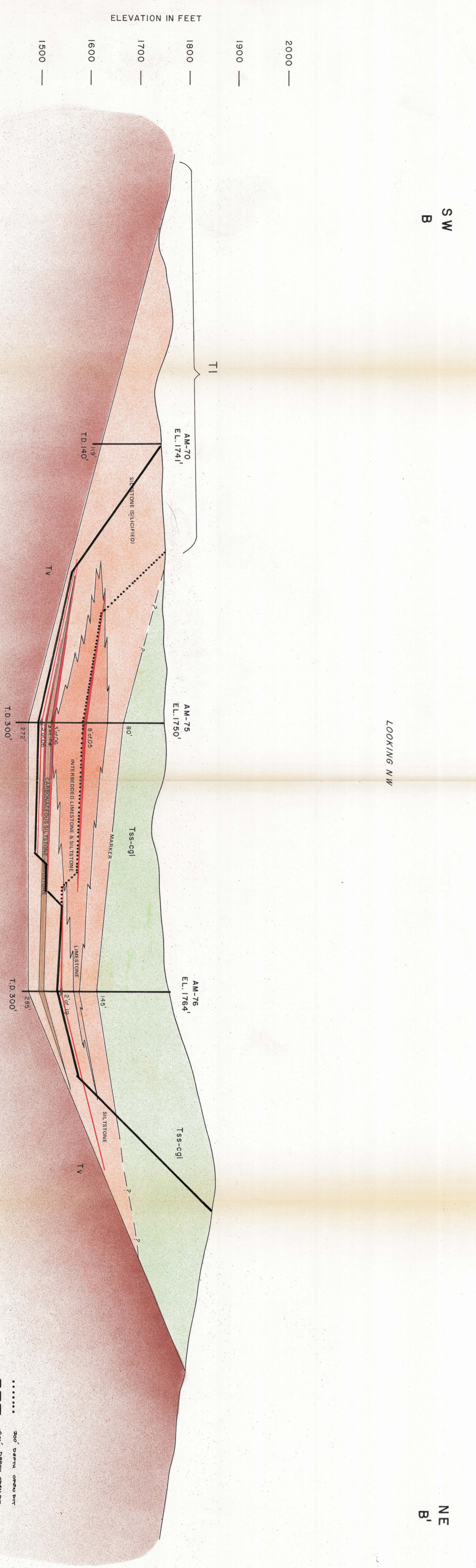
YAVAPAI CO., ARIZONA

HORIZONTAL & VERTICAL SCALES: 1" = 100'

NO VERTICAL EXAGGERATION

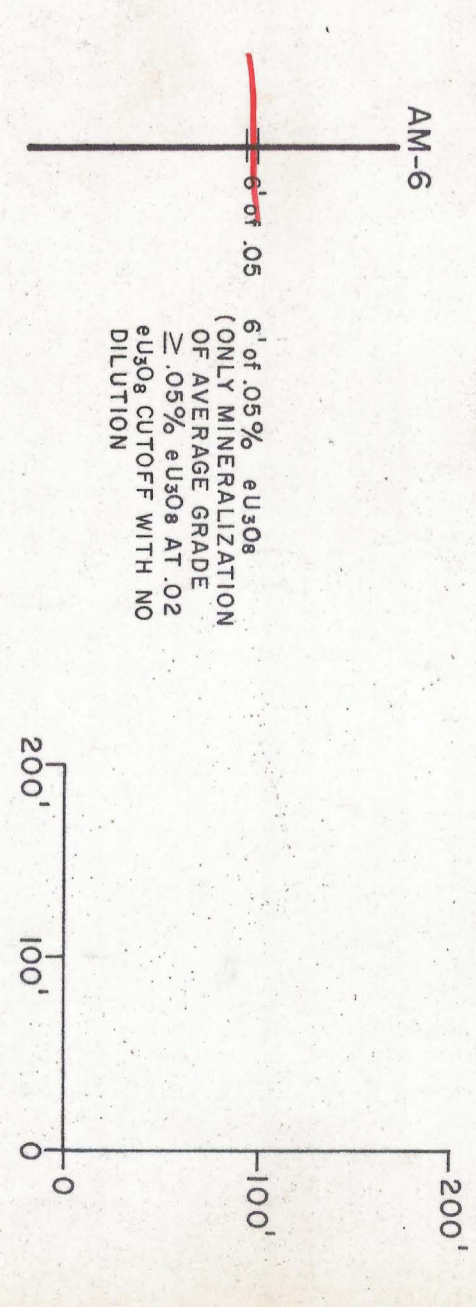
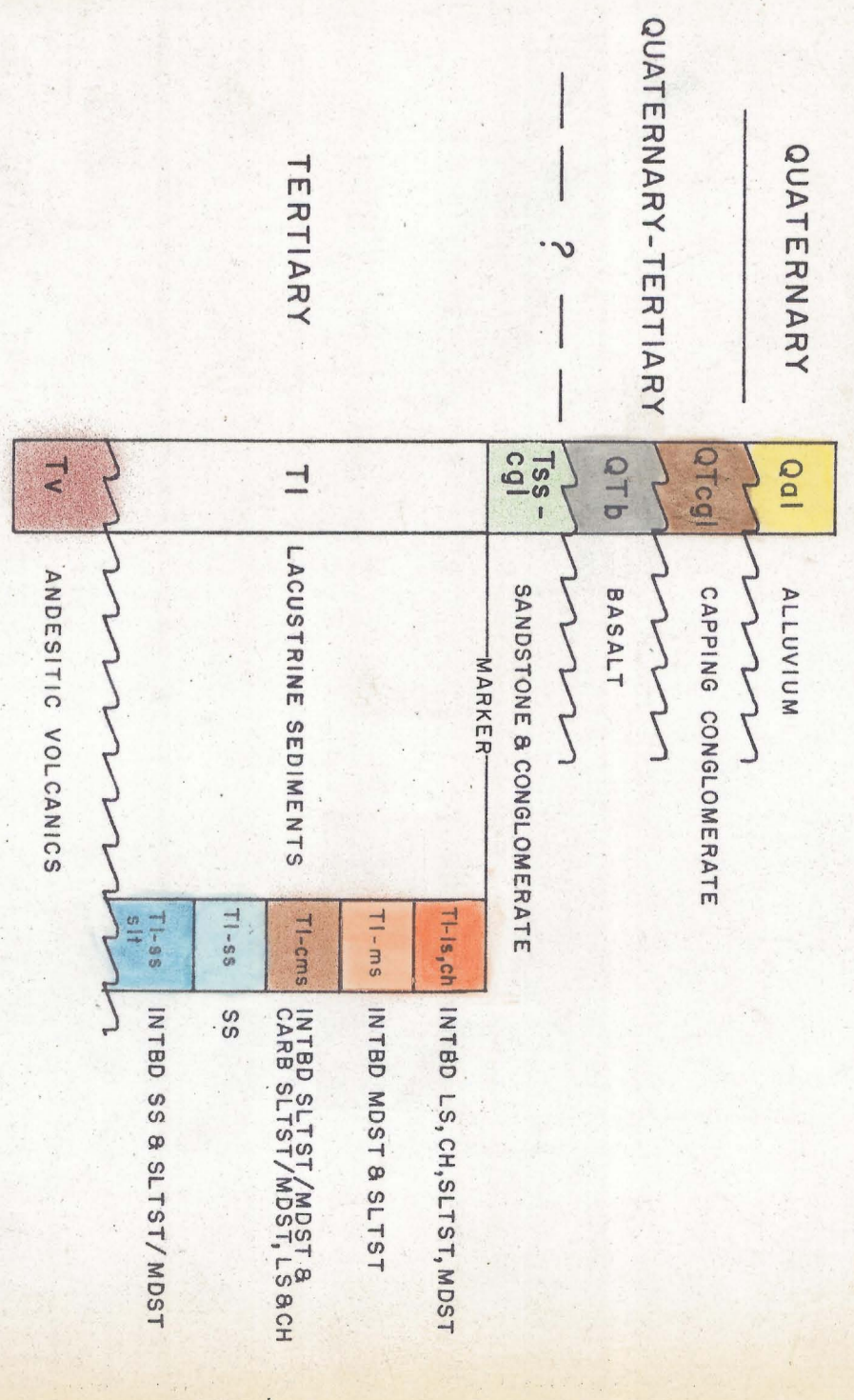
JOHN R. LUNG
STEPHEN J. PAVLAK

MAY 1976
Dec. 1976

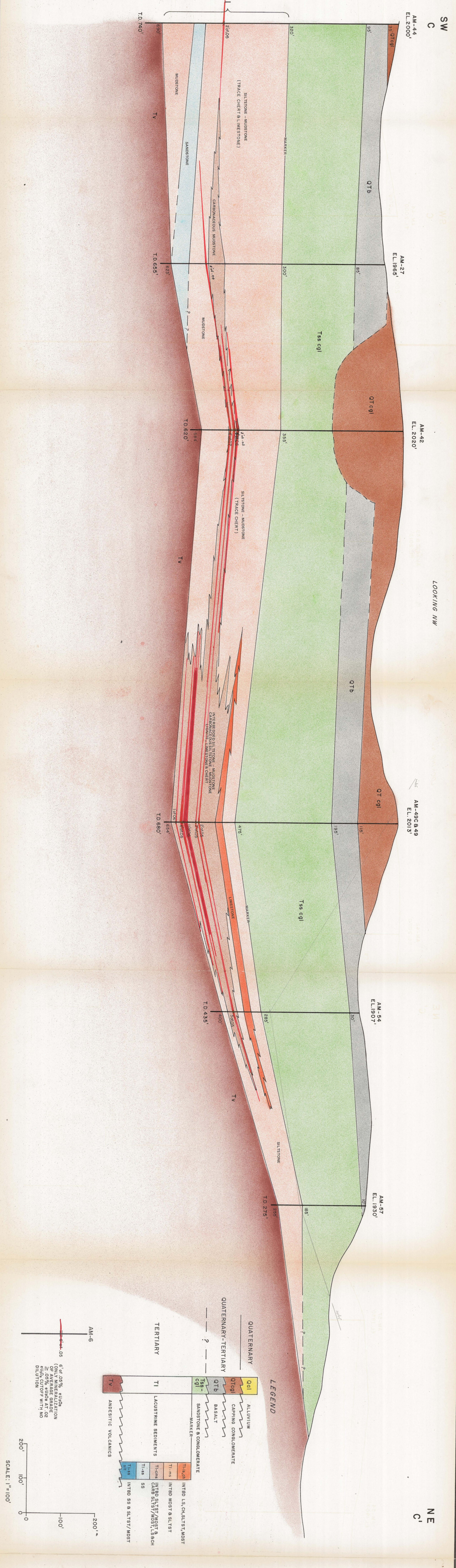


..... 200' DEPTH OPEN BIT
 - - - - - 400' DEPTH OPEN BIT
 ———— APPROX 800' DEPTH OPEN BIT
 UNFOLD BY BOUNDARIES, CONTOUR, SYMBOL
 FOR DEPTH BY TRACKS, REFERENCE

LEGEND



REPORT MXU 2 76
 MINERALS EXPLORATION CO.
 CASPER, WYOMING
 ANDERSON MINE CROSS-SECTION B-B'
 YAVAPAI CO., ARIZONA
 HORIZONTAL & VERTICAL SCALES: 1" = 100'
 NO VERTICAL EXAGGERATION
 JOHN R. LIVING
 STEPHEN J. PAYLAK
 MAY 1976
 DEE JULIEN



REPORT MXU 2 76

MINERALS EXPLORATION CO.
CASPER, WYOMING

PLATE NO. 6

ANDERSON MINE CROSS-SECTION C-C'

YAVAPAI CO., ARIZONA

HORIZONTAL & VERTICAL SCALES: 1" = 100'
NO VERTICAL EXAGGERATION

JOHN R. LINDS
STEPHEN J. PAVLAK

MAY 1976
Drs. J. Lind