



CONTACT INFORMATION  
Mining Records Curator  
Arizona Geological Survey  
3550 N. Central Ave, 2nd floor  
Phoenix, AZ, 85012  
602-771-1601  
<http://www.azgs.az.gov>  
[inquiries@azgs.az.gov](mailto:inquiries@azgs.az.gov)

The following file is part of the Walter E. Heinrichs, Jr. Mining Collection

#### **ACCESS STATEMENT**

These digitized collections are accessible for purposes of education and research. We have indicated what we know about copyright and rights of privacy, publicity, or trademark. Due to the nature of archival collections, we are not always able to identify this information. We are eager to hear from any rights owners, so that we may obtain accurate information. Upon request, we will remove material from public view while we address a rights issue.

#### **CONSTRAINTS STATEMENT**

The Arizona Geological Survey does not claim to control all rights for all materials in its collection. These rights include, but are not limited to: copyright, privacy rights, and cultural protection rights. The User hereby assumes all responsibility for obtaining any rights to use the material in excess of "fair use."

The Survey makes no intellectual property claims to the products created by individual authors in the manuscript collections, except when the author deeded those rights to the Survey or when those authors were employed by the State of Arizona and created intellectual products as a function of their official duties. The Survey does maintain property rights to the physical and digital representations of the works.

#### **QUALITY STATEMENT**

The Arizona Geological Survey is not responsible for the accuracy of the records, information, or opinions that may be contained in the files. The Survey collects, catalogs, and archives data on mineral properties regardless of its views of the veracity or accuracy of those data.

ORIGINAL COPR. 1819 BY J. C. PARKER

LADELPHIA, 7 PA. MADE IN U.S.A.

LET  
42

TR. MK. REG. U.S. PAT. OFF.

205  
22  

---

183

## Magnetic Survey For

L. Rice Page 1 11-5-64

Line S35E From N-N.Y. #1

	Sta	Scale	Read	Time
2050	0	+1	205	9:55 Top hill * also base
2300	1	"	230	
2320	2	"	232	
2420	3	"	242	
2450	4	"	245	
2350	5	"	235	
2300	6	"	230	10:10
2180	7	"	218	in wash up hill
2430	8	"	243	
2380	9	"	238	
2760	10	+2	92	10:25 Top hill
2430	11	"	81	
2280	12	"	76	
2100	13	"	70	in wash
2130	14	"	71	50' past end up hill the claim 515°E
2010	15	"	67	10:35 top hill
2310	16	"	77	
2370	17	"	79	
2460	18	"	82	
4710	19	"	157	10:50 High Polarization
1890	20	"	63	
1950	21	"	65	in wash
1890	22	"	63	
2160	23	"	72	
2160	24	"	72	
1920	25	"	64	
2550	26	"	85	11:00 end of claim

Magnetic Survey for  
L. Rice Line 2 S 80 E

(2)

	Sta	Scale	Read	Time	
2280	0	+2	76	11:10	top hill
2460	1	"	82		
2190	2	"	73		
2190	3	"	73		down of hill
2250	4	"	75		
2100	5	"	70		
1800	6	"	60		B.M.
2130	7	"	71		
2340	8	"	78	11:25	
2250	9	"	75		S. 15. E
2160	10	"	72		
2250	11	"	75		
2160	12	"	72		
2130	13	"	71		post
2190	14	"	73	11:35	end of claim
2130	15	"	71		11:40
1980	5-66'	"	66	center #4	of claim



## magnetic survey for ③

L. Rice Line 3 S. 10 E

	Sta	seals	Read	Time
	0	same	as 15-66	11:40
2070	1	+2	69	
2010	2	"	67	
2250	3	"	75	
2040	4	"	68	
2220	5	"	74	
2130	6	"	71	11:55
2220	7	"	74	
2040	8	"	68	
2100	9	"	70	"
2040	10	"	68	junk
2100	11	"	70	
2250	12	"	75	junk
2250	13	"	75	12:10
2250	14	"	75	
2580	15	"	86	12:20
2310	16	"	77	CEC 12:25
	Base + 1		206	12:50

daily { No drift correction  
to here.

overall { no overall drift

Magnetic Survey for (4)

L. Rice Line 4 N. 10 E

	Sta	Scale	Read.	Time	
2490	0	+2	83	14:25	
2250	1	"	75		
2010	2	"	67		in wash
1980	3	"	66	14:35	
2100	4	"	70	-20	To center
2100	5	"	70		
2250	6	"	75	-40	To corner
2460	7	"	82		claim
2210	8	"	77		Road
3030	9	"	101	14:50	
2690	10	"	90	-108	from here
2150	11	"	72	15:00	
2090	12	"	70		
2060	13	"	69	15:15	
2030	14	"	68		
2090	15	"	70		
1910	15-75	"	64	15:30	
	16				S. 80 E

magnetic Survey for (5)  
 L. Rice Line 5 S. 80E  
 1st scale Read. Time  
 as Line 4 13:35

2150	1	+2	72	
1970	2	"	66	-208
1970	3	"	66	
2020	4	"	68	
2140	5	"	72	
1840	6	"	62	
2080	7	"	70	
2320	8	"	78	
2140	9	"	72	
2220	10	"	75	-308

in Wash

15:45 N. E. CO  
 3 sons

magnetic survey for ⑥

L. Rice Line 6 S. 40° E

Sta Scale Read. Time  
0 as Line 5 15:45

2130	1	+2	72	
2310	2	"	78	
2070	3	"	70	16:00
2030	4	"	69	-408
2210	5	"	75	
2360	6	"	80	
2330	7	"	79	
2540	8	"	86	
2780	9	"	94	16:10 in walk
2440	10	"	83	-508 S. E corner up hill

2050 Base + 1 210 , 16:35  
3 sons

daily { -508 correction  
to here.

{ no overall drift

Magnetic Survey for <sup>(7)</sup> 11/6/64  
 L. Rice Line 7 N:S.

	Sta.	Scale	Read.	Time	
2050	Base	+1	202	9:50	+300 overall
2520	0	+2	83	10:10	S-E. Corner
1770	1	"	58		3 sons
1470	2	"	48		in road
2250	3	"	74		up of hill
1680	4	"	55		
1890	5	"	62		
3300	6	"	109		
2160	7	"	71		
2610	8	"	86		
2550	9	"	84	10:25	
1650	10	"	54		
3220	11	"	106		+ 10% from here
2020	12	"	66		
1930	13	"	63		
2890	14	"	95		

Lee's  
 Frac.  
 S.-E.  
 Corner

## Magnetic Survey for (8)

L. Price Line 8 E.W

Sta Scale Read. Time

0 as line 7

3250	1	+2	107	10:30	
2830	2	"	93		
2860	3	"	94		Road
2980	4	"	98		
2020	5	"	66		
2380	6	"	78		
2650	7	"	87		
2590	8	"	85	10:45	+200 daily
2390	9	"	78		
2510	10	"	82		
3200	10+60	"	105		S-W. corner Golde
2960	11	"	97		
2960	12	"	97		
2750	13	"	90		
3050	14	"	100	11:00	
2480	15	"	81		
2570	16	"	84		
2750	17	"	90		
2990	18	"	98	+300 daily	N. W.
2510	19	"	82		
2210	20	"	72		
2300	21	"	75		
2510	21+70	"	82	11:15	

Magnetic Survey for (9)

L. Rice Line 9 N.

Sta scale Read. Time

0 at Line 8

2150	1	L2	70	11:20
2240	2	"	73	
2210	3	"	72	
2210	4	"	72	in walk
2180	5	"	71	
2070	6	"	68	11:30

## Magnetic Survey for (10)

L. Rice Line 10 N-S of

	Sta	Scale	Read	Time	
2300	0	+2	75	12:00	N-W corner - Golde
2090	1	"	68		
2300	2	"	75		
2300	3	"	75		
3350	4	"	110		Shaft
2990	5	"	98		
2450	6	"	80	12:15	
2570	7	"	84		
2330	8	"	76		
2090	9	"	68		
2030	10	"	66		
2240	11	"	73		
2210	12	"	72		
1950	13	"	60		
2300	14	"	75		
2780	15	"	71		
2180	16	"	71	12:30	
2120	17	"	69		
2180	18	"	71		
2240	19	"	73		
2810	20	"	92		



## Magnetic Survey for (11)

L. Rice Line 11

Sta scale Road. Time

	Sta	scale	Road	Time	
	0	as	10		S. 15. W
2250	1	+2	73	12:40	+30% daily
2010	2	"	65		
2250	3	"	73		
1800	4	"	58		
2760	5	"	90		
2220	6	"	72		up hill
2100	7	"	68		down hill
2370	8	"	77		in wash
1740	9	"	56		
2370	10	"	77		
2640	11	"	86	12:55	on the Road
2460	12	"	80		
2760	12+40	"	90	13:50	S. E. corn. Golde

2050 Base +1 199 14:30

daily { +30% to here

overall { +30% overall

Magnetic Survey (12)

L	Pace	Line	12	InCC
	Sta	Scale	Read	Time
				Claim
2210	0 N	+ 2	72	15:15 N. 20 E
2150	1 N	"	70	+20% daily
2090	2 N	"	68	
2090	3 N	"	68	
2120	4 N	"	69	
2120	5 E	"	69	+10% 15:30
2120	6 S	"	69	
2120	7 S	"	69	
2210	8 S	"	72	
2210	9 S	"	72	
2120	10 W	"	69	
2050	Base	+ 1	200	+20%

daily { +20% correction to here

overall { +30% overall

# Magnetics for Rice

Rice 1

12-22-64

TR. MK. REG. U.S. PAT. OFF.

Sta	value after drift corrections	Scale	Read	Hending, East
Base		+1	21	
#2 Base		+1	46	↓
BASE		+1	22	↓
#2 Base	2300	+1	47	0
Oliver	2330	+1	50	↓
1	2060	+1	23	↓
2	2190	+1	36	↓
3	2320	+1	49	↓
4	2180	+1	35	↓
5	2440	+1	60	+1
6	2690	+1	85	↓
7	2510	+1	67	↓
8	2660	+1	82	↓
9	2840	+1	100	↓
10	2460	+1	62	↓
11	2590	+1	75	↓
12	2790	+1	94	+2
13	2550	+1	70	↓
14	2380	+1	53	↓
15	2570	+1	72	↓
Bywell	2830	+1	98	↓
17	2270	+1	42	↓
18	2520	+1	66	+3
19	3320	+1	146	↓
20	2320	+1	46	↓
Fence Line	2480	+1	62	↓

+ 183 to all readings for overall drift and mag. change.

ORIGINAL COPR. 1910 BY J. C. PARKER

LEFAX, PHILADELPHIA, 7 PA. MADE IN U.S.A.

#2

12-21-64

TR. MK. REG. U.S. PAT. OFF.

Line 2 Heading, west  
STA SCALE ROAD

0	1830	- 1	3
1	2510	+ 1	65
2	2400	+ 1	53
3	2710	+ 1	84
4	2450	+ 1	58
5	2670	+ 1	80
6	2340	+ 1	47
7	2500	+ 1	62
8	2330	+ 1	45
9	2530	+ 1	65

WASH

+ 4



40' west  
COR. of (3 sons)

+ 5



Patterson  
South

Rice 3

12-21-64

TR.MK. REG. U.S. PAT. OFF.

~~1-0~~

300' NW Golden earth

Detail	STA	Scale	Reading	
START	0	2580	+1	70
	1	2320	+1	43 +6
	2	2720	+1	83
	3	2770	+1	88
	4	2310	+1	42
	5	2620	+1	73
	6	2520	+1	62 +7
	7	2830	+1	93
	8	2860	+1	96
	9	2570	+1	67
	10	1920	+1	2
	11	2060	+1	15 +8
	12	2090	+1	18
	13	2000	+1	9
	14	2090	+1	18
	15	2240	+1	33
	16	2030	+1	11 +9
	17	2230	+1	31
	18	3640	+1	172
	19	2940	+1	102
	20	1980	+1	6

Heading west

Rice 4  
12-22-64

TR. MK. REG. U.S. PAT. OFF.

Sta.		Scale	Reading	
0	1930	+1	0	+10
1	2550	+1	62	
2	1880	<del>1</del>	5	
3	2410	+1	48	
4	2130	+1	20	
5	1900	-1	3	
6	2430	+1	49	+11
7	2220	+1	28	
8	1570	-1	37	
9	1870	-1	7	
10	2190	+1	25	
11	2020	+1	7	+12
12	2650	+1	70	
13	2340	+1	39	
14	1950	+1	0	
15	2380	+1	43	
16	2330	+1	37	+13
17	2600	+1	64	
18	2620	+1	66	
19	2640	+1	68	
3-1 20	2230	+1	27	
#2 Base	2300	+1	33	+14

RIC 6  
12-22-64

TR. MK. REG. U.S. PAT. OFF.

ORIGINAL COPR. 1910 BY J. C. PARKER

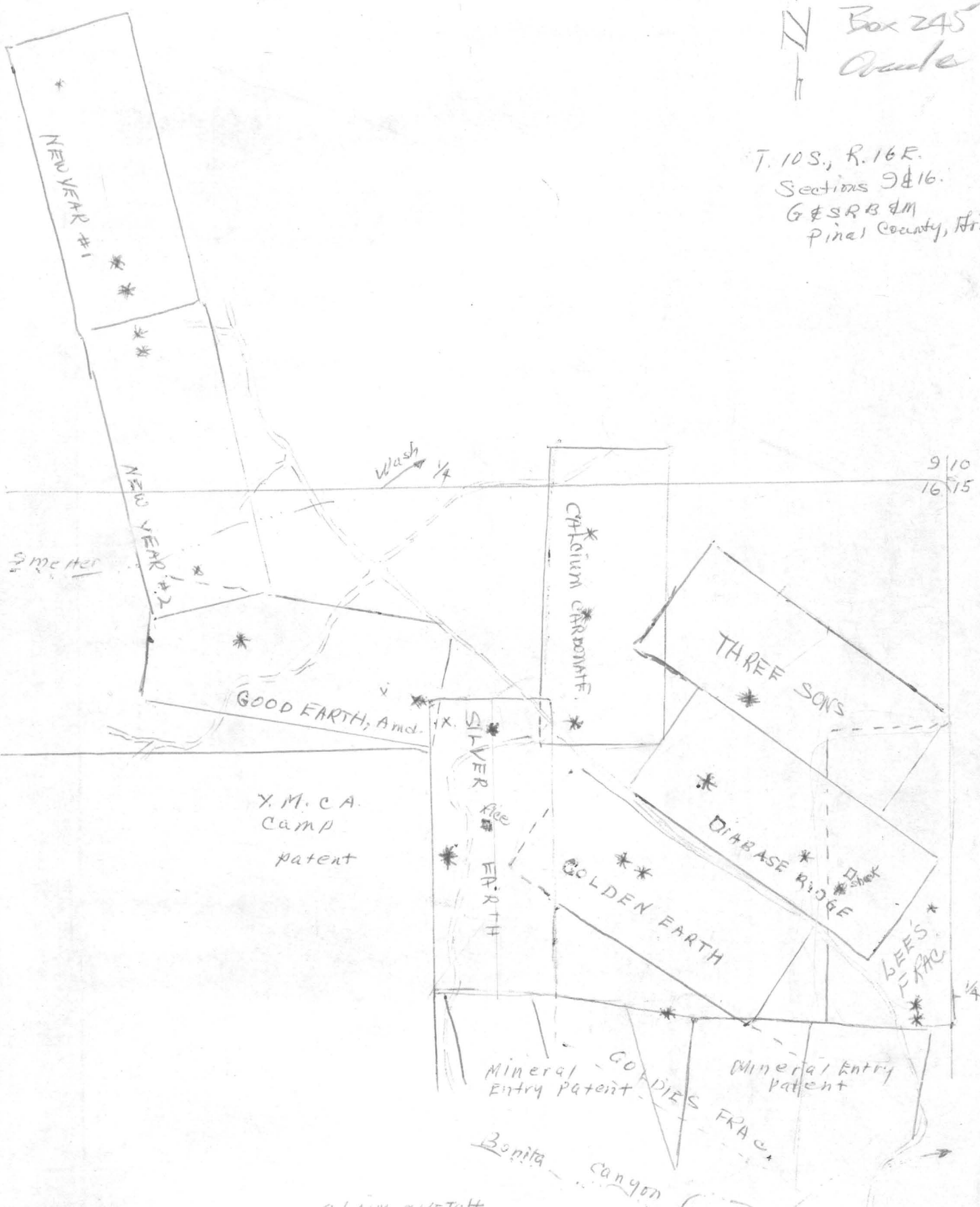
	Sta.	Scale	Read	
#2	BASE 2300	+1	25	+22
	0 2250	+1	20	
	1 2370	+1	32	
	2 2310	+1	26	
	3 2240	+1	19	
	4 2270	+1	22	
	5 2100	+1	5	
	6 2230	+1	18	
	7 2250	+1	20	
	8 2400	+1	35	
	9 2270	+1	21	+23
	10 2320	+1	26	
	11 2230	+1	17	
	12 2160	+1	10	
	13 2060	+1	0	
	14 2080	+1	2	
	15 2330	+1	27	
	16 2410	+1	35	
	17 2530	+1	47	
	18 3000	+1	93	+24
	19 2840	+1	77	"
#2	BASE 2300	+1	23	+24

LEFAX, PHILADELPHIA, 7 PA. MADE IN U.S.A.  
42

L.H. Rice  
 Box 245  
 Oracle

T. 10S., R. 16E.  
 Sections 9 & 16.  
 G & S R B & M  
 Pinal County, Ariz.

9/10  
 16/15



CLAIM SKETCH  
 lode mining claims of  
 Bee H & Goddie R. Rice

Scale 1" = 660'



December 30, 1964

Mr. Lee H. Rice  
Oracle, Arizona

Re: Letter Report  
Magnetic Survey  
Oracle, Pinal County, Arizona

Dear Mr. Rice:

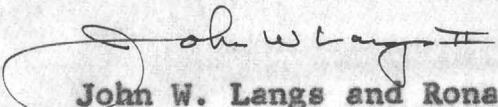
More comprehensive detailed geology, which includes sampling and susceptibility tests, may be worthwhile. Maximum benefit from magnetic data is usually derived by correlation with known geology. Of particular significance is knowing relationships between rock magnetic susceptibilities, possible mineralization, and ore controls.

Magnetic relief may, in part, result from magnetite segregation of granite, or relate to magnetites in faults or contacts. Quartz rich dikes, which are locally of economic interest, should be checked for contrasting susceptibility.

Ground checks have been recommended in areas of greater magnetic relief and merit geologic reconnaissance.

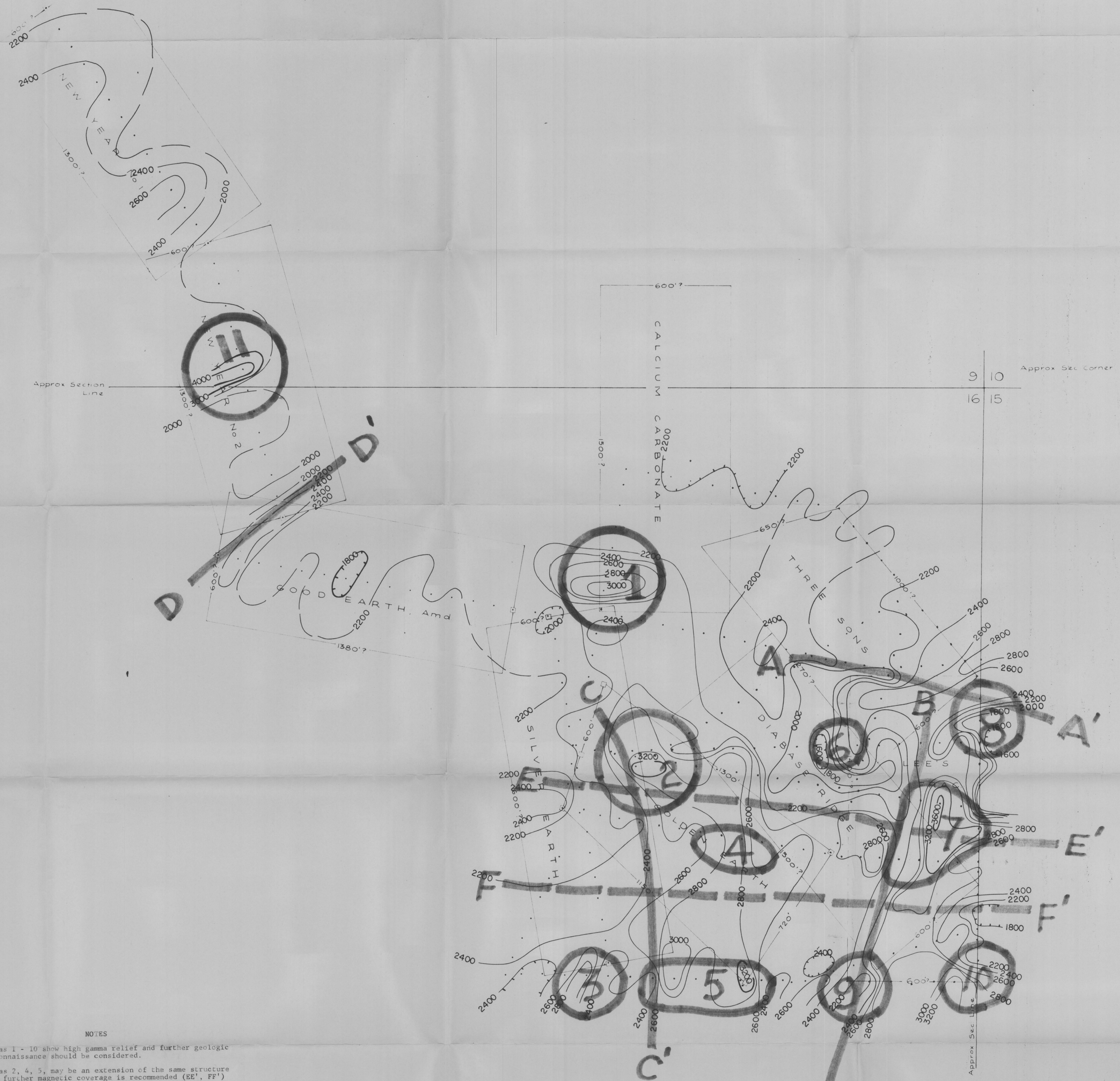
Very truly yours,

HEINRICHS GEOEXPLORATION COMPANY

  
John W. Langs and Ronald Palmer

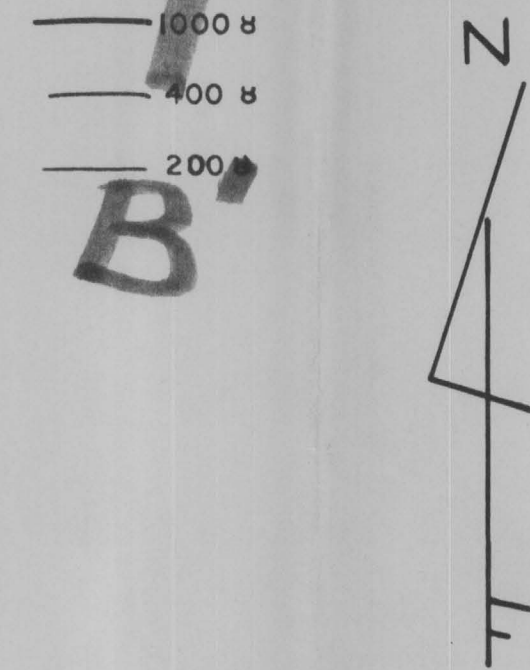
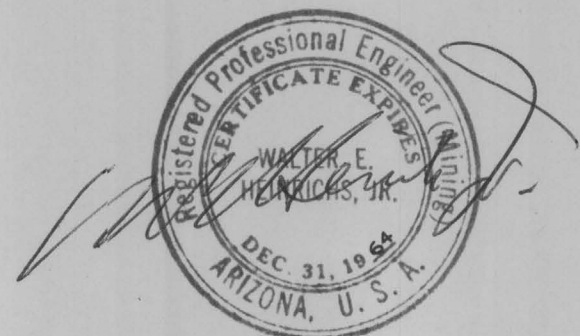






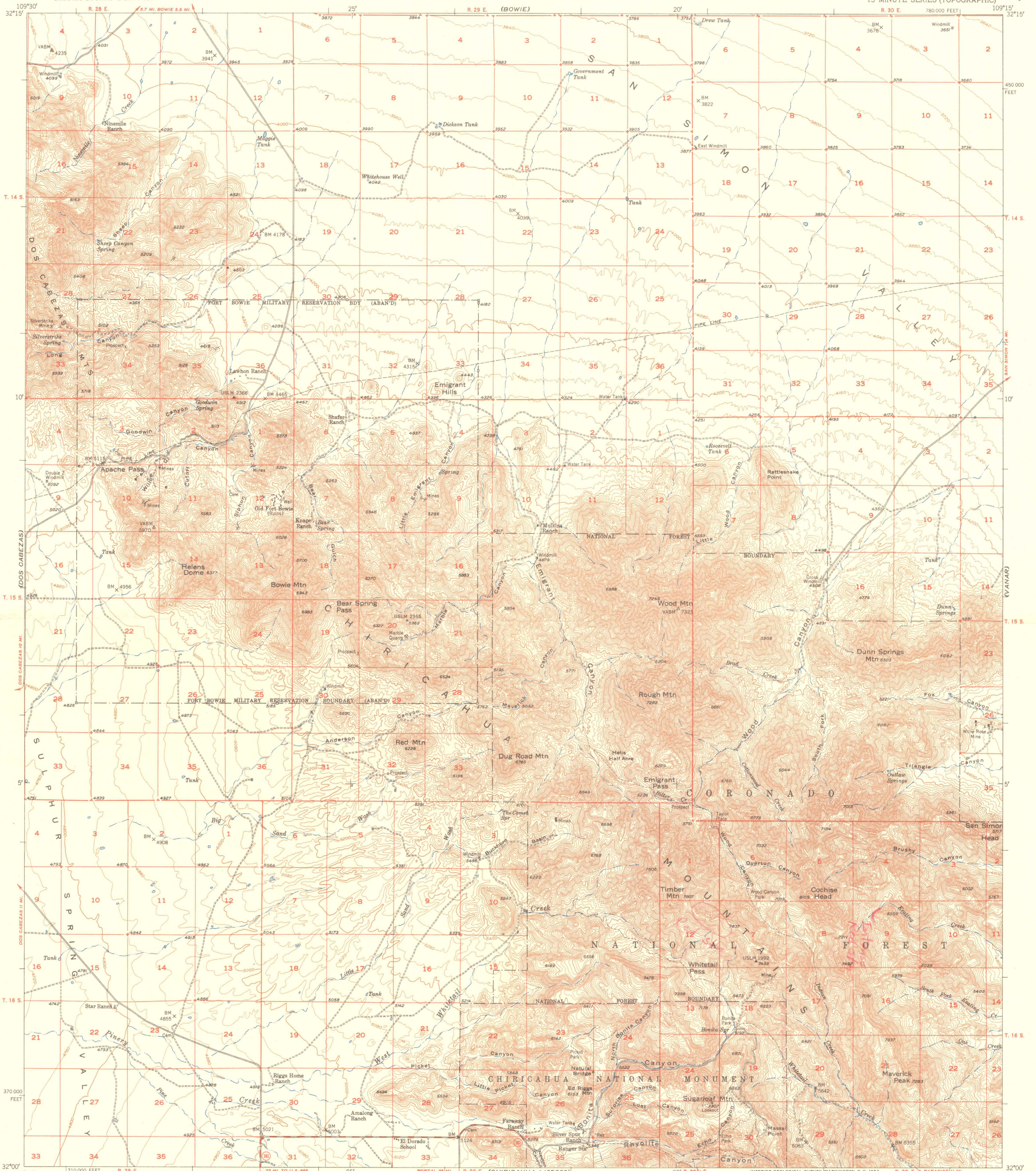
NOTES

1. Areas 1 - 10 show high gamma relief and further geologic reconnaissance should be considered.
2. Areas 2, 4, 5, may be an extension of the same structure and further magnetic coverage is recommended (EE', FF') pending results of geologic investigation.
3. Area 11 is probably a result of surface rock type and identification of this may aid interpretation of other magnetic highs.
4. Areas 6 and 8 show magnetic lows, as well as highs, and should be checked for hydrothermal alteration.

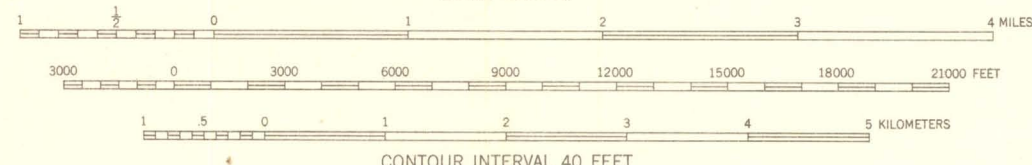
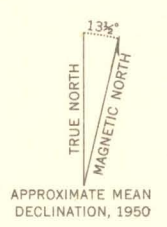


HEINRICHS GEOEXPLORATION COMPANY P.O. Box 5671 Tucson, Arizona		
MAGNETIC SURVEY VERTICAL INTENSITY FOR L. H. RICE		
PINAL COUNTY, ARIZONA		
SCALE: 1" = 200'	CONTOUR INTERVAL: MULTIPLE	REVISIONS
DATE: DEC. 1964	SHEET OF	
DRAWN BY:	DRAWING NO.:	FILE





Maped, edited, and published by the Geological Survey  
Control by USGS and USC&GS  
Topography from aerial photographs by multiplex methods  
and by plane-table surveys 1950. Aerial photographs taken 1947  
Polyconic projection. 1927 North American datum  
10,000-foot grid based on Arizona coordinate system, east zone  
Unchecked elevations are shown in brown



ROAD CLASSIFICATION

Heavy-duty	4 LANE (6 LANE)	Light-duty
Medium-duty	4 LANE (6 LANE)	Unimproved dirt
U. S. Route		State Route

CONTOUR INTERVAL 40 FEET  
DATUM IS MEAN SEA LEVEL  
THIS MAP COMPLIES WITH NATIONAL MAP ACCURACY STANDARDS  
FOR SALE BY U. S. GEOLOGICAL SURVEY, FEDERAL CENTER, DENVER, COLORADO OR WASHINGTON 25, D. C.  
A FOLDER DESCRIBING TOPOGRAPHIC MAPS AND SYMBOLS IS AVAILABLE ON REQUEST

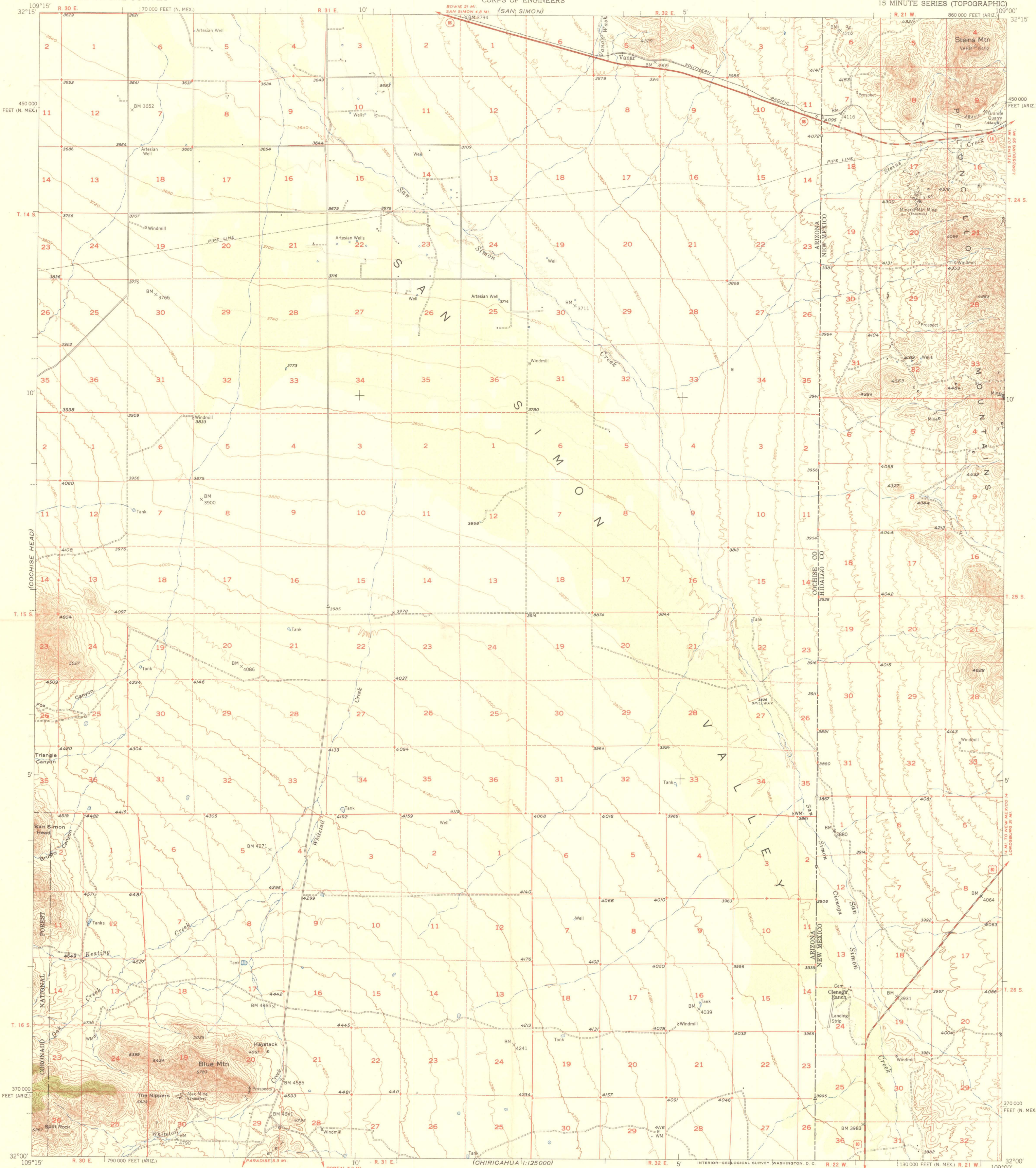


(BOWIE)

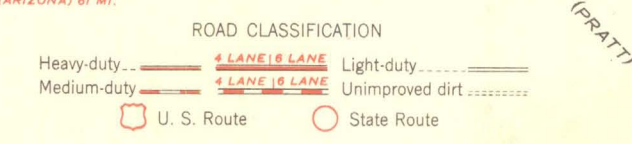
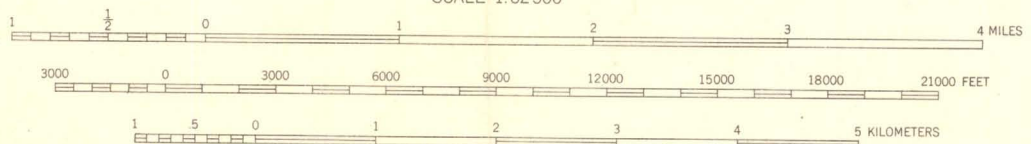
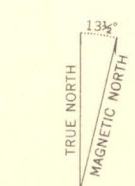
UNITED STATES DEPARTMENT OF THE INTERIOR GEOLOGICAL SURVEY

UNITED STATES DEPARTMENT OF THE ARMY CORPS OF ENGINEERS (SAN SIMON)

VANAR QUADRANGLE ARIZONA-NEW MEXICO 15 MINUTE SERIES (TOPOGRAPHIC)



Mapped, edited, and published by the Geological Survey Control by USGS and USC&GS. Topography from aerial photographs by multiplex methods and by plane-table surveys 1950. Aerial photographs taken 1947. Polyconic projection. 1927 North American datum 10,000-foot grid based on Arizona coordinate system, east zone, and New Mexico coordinate system, west zone. Dashed land lines indicate approximate location.



CONTOUR INTERVAL 40 FEET. DOTTED LINES REPRESENT HALF-INTERVAL CONTOURS. DATUM IS MEAN SEA LEVEL. THIS MAP COMPLIES WITH NATIONAL MAP ACCURACY STANDARDS. FOR SALE BY U. S. GEOLOGICAL SURVEY, FEDERAL CENTER, DENVER, COLORADO OR WASHINGTON 25, D. C. A FOLDER DESCRIBING TOPOGRAPHIC MAPS AND SYMBOLS IS AVAILABLE ON REQUEST.

VANAR, ARIZ.-N. MEX. N3200-W10900/15. EDITION OF 1951.



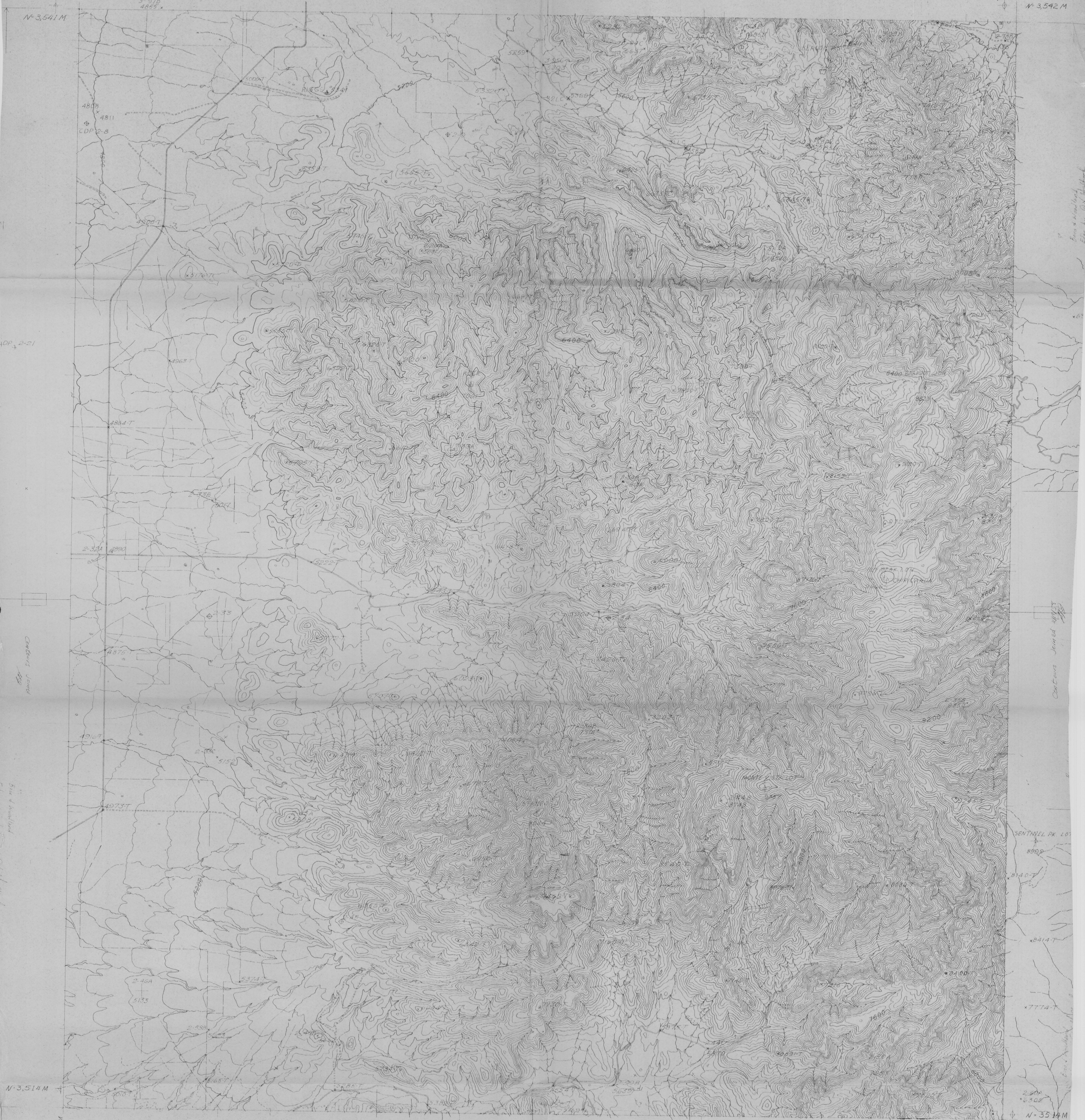




Base & contour  
from Aerial  
photo  
by  
C. H. Johnson

**BEFORE FIELD COMPLETION**  
This is a copy of a U. S. Geological Survey manuscript compiled by photogrammetric methods. It does not include information to be obtained during field completion surveys.

**RUCKER, ARIZ.**  
N 3145 W 0915/15  
SCALE 1:48,000 C.I.-40



Contours joined  
by  
C. H. Johnson

Base & contour  
from Aerial  
photo  
by  
C. H. Johnson

Contours joined  
by  
C. H. Johnson

Base & contour  
from Aerial  
photo  
by  
C. H. Johnson

**RUCKER, ARIZ.**  
N 3145 W 0915/15  
SCALE 1:48,000 C.I.-40

109° 15' 00"