



CONTACT INFORMATION  
Mining Records Curator  
Arizona Geological Survey  
3550 N. Central Ave, 2nd floor  
Phoenix, AZ, 85012  
602-771-1601  
<http://www.azgs.az.gov>  
[inquiries@azgs.az.gov](mailto:inquiries@azgs.az.gov)

The following file is part of the Walter E. Heinrichs, Jr. Mining Collection

#### **ACCESS STATEMENT**

These digitized collections are accessible for purposes of education and research. We have indicated what we know about copyright and rights of privacy, publicity, or trademark. Due to the nature of archival collections, we are not always able to identify this information. We are eager to hear from any rights owners, so that we may obtain accurate information. Upon request, we will remove material from public view while we address a rights issue.

#### **CONSTRAINTS STATEMENT**

The Arizona Geological Survey does not claim to control all rights for all materials in its collection. These rights include, but are not limited to: copyright, privacy rights, and cultural protection rights. The User hereby assumes all responsibility for obtaining any rights to use the material in excess of "fair use."

The Survey makes no intellectual property claims to the products created by individual authors in the manuscript collections, except when the author deeded those rights to the Survey or when those authors were employed by the State of Arizona and created intellectual products as a function of their official duties. The Survey does maintain property rights to the physical and digital representations of the works.

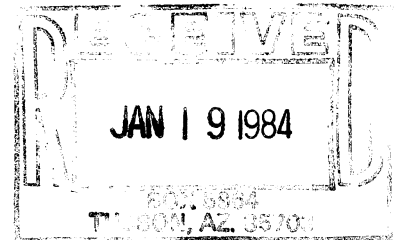
#### **QUALITY STATEMENT**

The Arizona Geological Survey is not responsible for the accuracy of the records, information, or opinions that may be contained in the files. The Survey collects, catalogs, and archives data on mineral properties regardless of its views of the veracity or accuracy of those data.

**SUPERIOR OIL**



January 17, 1984



Mr. Walter Heinrichs  
HEINRICHS GEOEXPLORATION CO.  
810 W. Grant Rd.,  
P.O. Box 5671  
Tucson, Arizona 85703

Dear Mr. Heinrichs:

Thanks again for checking your files on the Johnson Camp-Dragoon Project.

Please find enclosed your copy of memo dated 1/10/84.

Sincerely,

SUPERIOR OIL

Steve Dalton,  
Technician

SD/lg

Encl.

GEOEX #1680

TO Steve Daton  
Superior Minerals  
Tucson, AZ

HEINRICH'S  
GEOEX



GEOPHYSICAL ENGINEERS  
TUCSON, ARIZONA

HEINRICH'S GEOEXPLORATION COMPANY

810-808 W. GRANT ROAD - P. O. BOX 5671

TUCSON, ARIZONA 85703

Area Code 602 Phone 623-0578

Geophysical Exploration Research Engineering

SUBJECT: Early '70's Johnson-Dragoon Dist Cochise DATE: 1/10/84  
County, AZ. Old GEOEX Job file data.

2ND FOLD

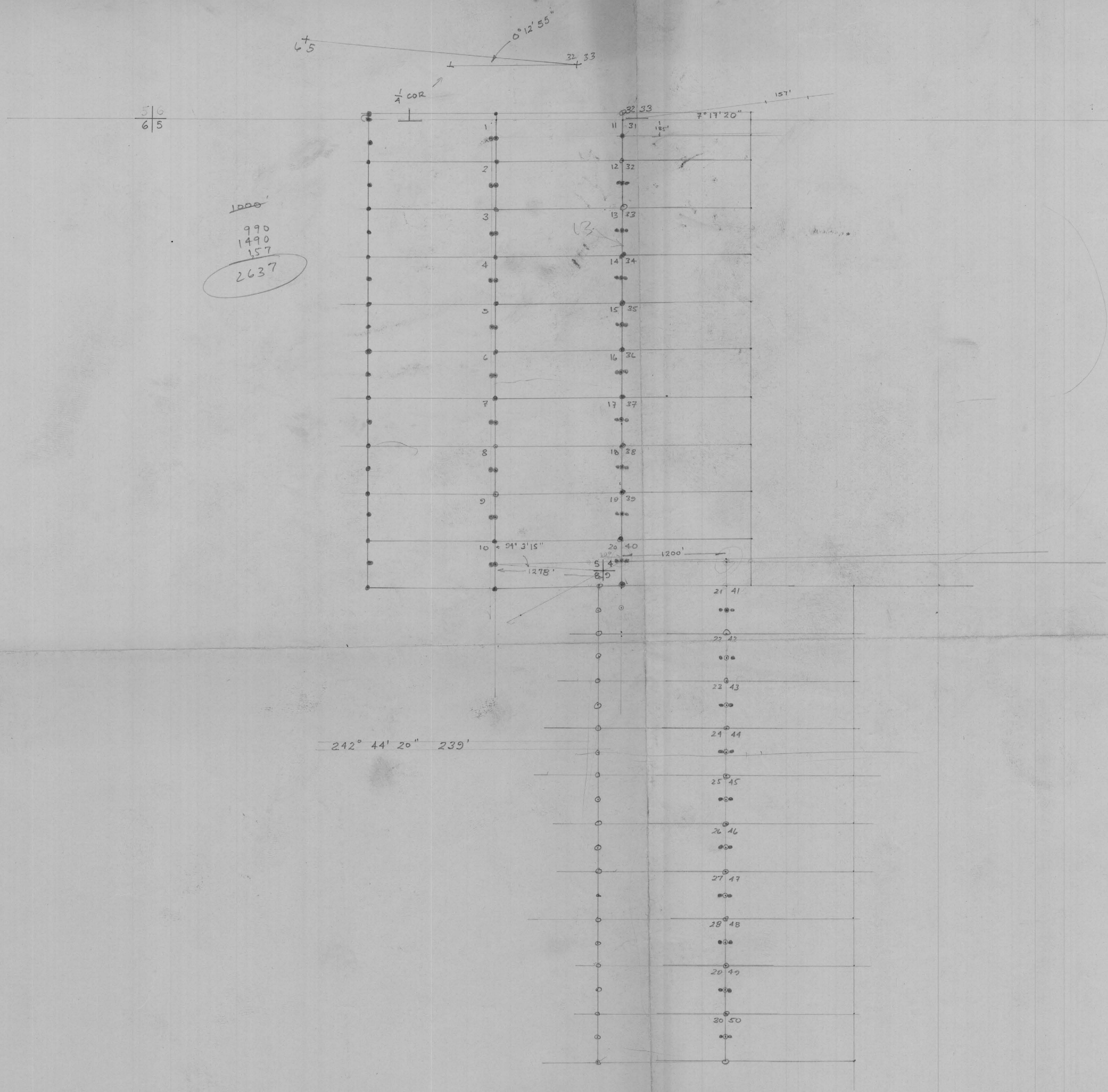
Dear Steve: A review of our "archive" files etc. yielded three Jobs of this vintage and location. #672 of 11/2/71. a claim staking job - probably at one time or another part of Cyprus joint venture but I am not sure about this. We have a reproducible pencil copy; #709 of 4/24/72 titled Dragoon Magnetics. We interpreted U.S.S. aerial mag of this area in 1963-1964 then did ground detail follow up in 1972 and subsequently evolved into from this Job # 811 of 3/12/73 which was <sup>more detailed</sup> expanded version of #709 which covered much of Johnson-Dragoon and definitely was at least in part a Cyprus joint venture. Files indicate all material except some field notes and correspondence and accounting was returned to

1ST FOLD

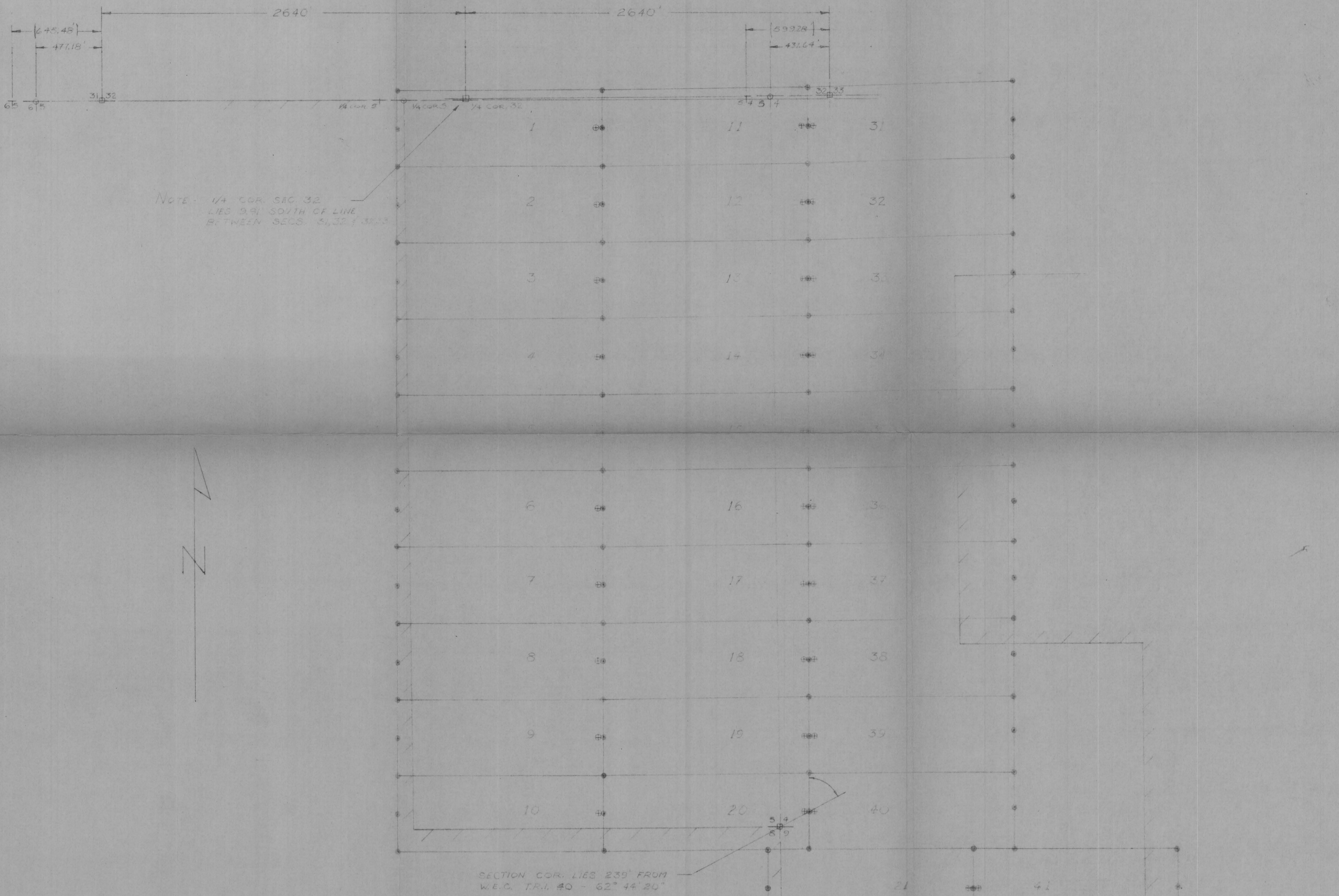
PLEASE REPLY TO → SIGNED  
Superior as per contract. Same applies to 1963-1964 work - Report copies (text only) of this work is attached with/ together some interoffice correspondence copies etc. related to same. I do not find any originals or reproducible of the (5) five maps referred to in the table of Contents of the 1963 report and record indicates these all went to Client in due course. Hope to give this to Poulter or Dummeth at A.G.S. tonight. Please let me know that you received it and holder if we can be of any further help. Walt. Heinrichs.

DATE

SIGNED

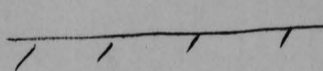


21  
 21  
 21  
 41  
 41  
 31  
 ---  
 197



EXPLANATION

- ⊕ SECTION CORNER LOCATED IN FIELD
- ⊕ QUARTER CORNER LOCATED IN FIELD
- ⊕ INFERRED LOCATION OF SECTION CORNER FROM 1918 SURVEY PLAT
- ⊕ INFERRED LOCATION OF QUARTER CORNER FROM 1918 SURVEY PLAT
- ⊕ INFERRED LOCATION OF SECTION CORNER OR QUARTER CORNER FROM 1897 SURVEY PLAT
- 2640' DISTANCE FROM 1918 SURVEY PLAT
- (2640') DISTANCE FROM 1897 SURVEY PLAT
- LOCATED CLAIM CORNERS OR END CENTERS
- ⊕ LOCATED DISCOVERY MONUMENTS
- # CLAIM AND NUMBER

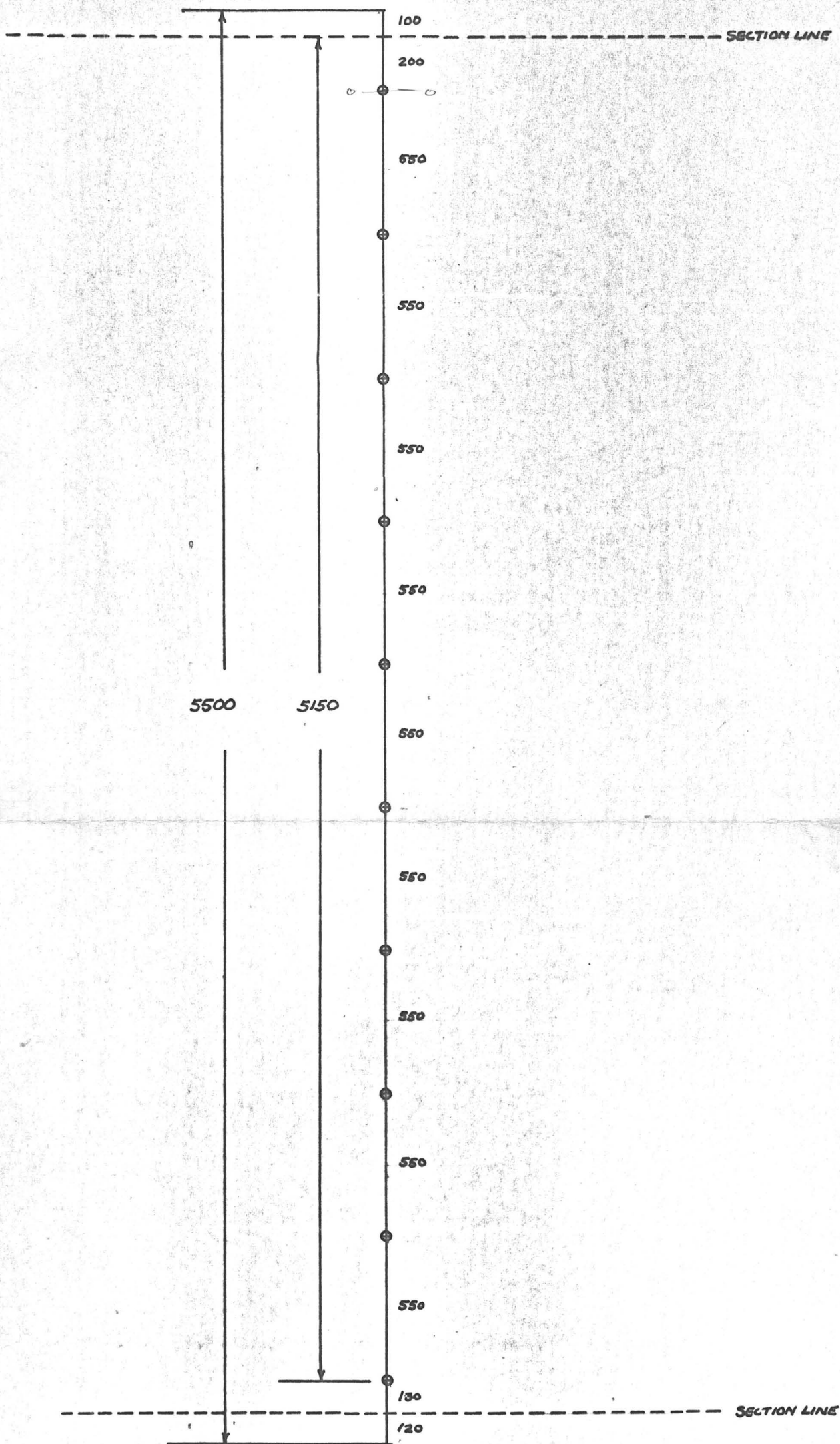


APPROXIMATE STATE LAND BOUNDARY

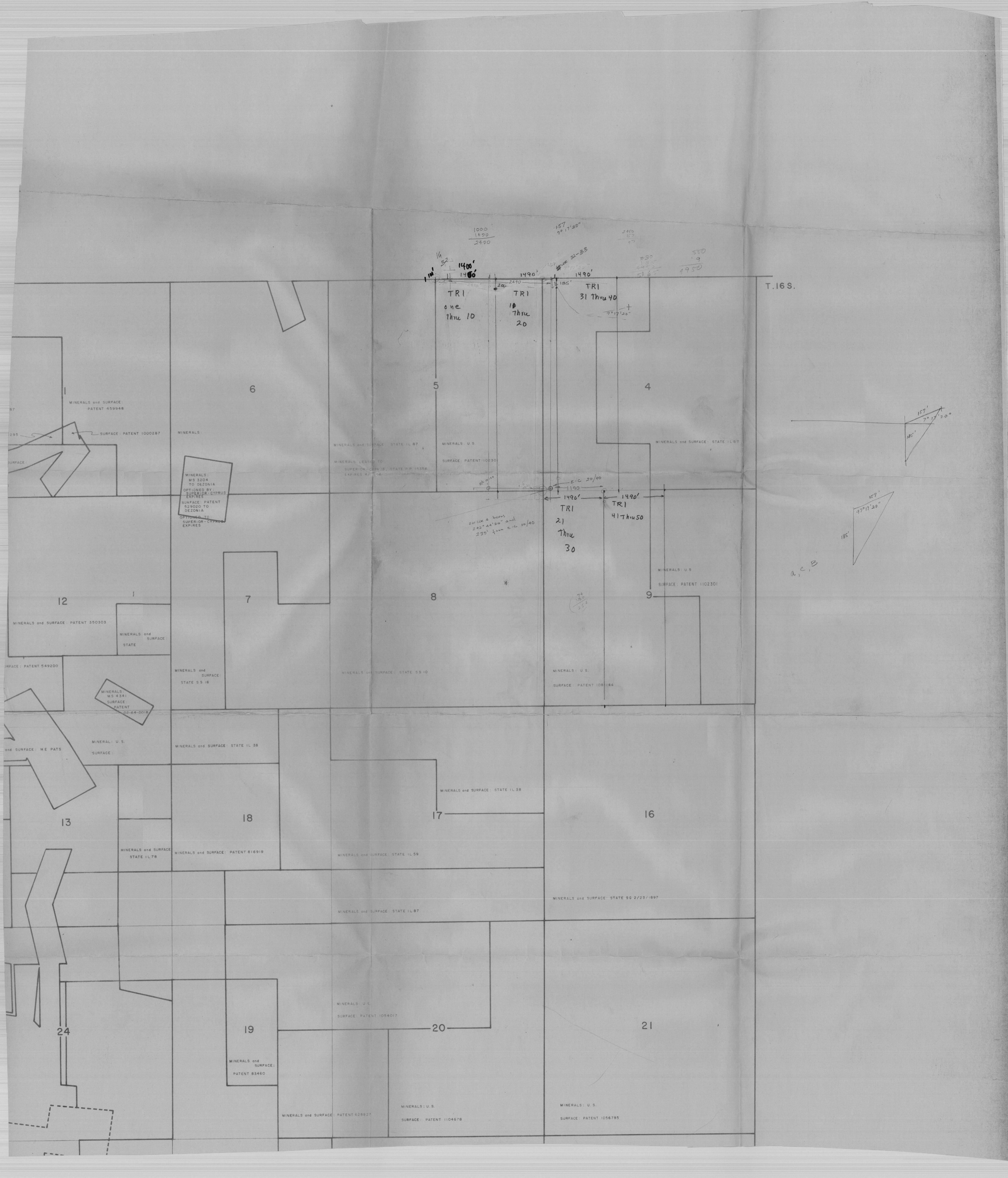
SCALE: 1" = 500'  
NOVEMBER 1971

CLAIM LOCATION MAP  
of  
TRI CLAIM GROUP  
COCHISE COUNTY, ARIZONA  
for  
THE SUPERIOR OIL COMPANY

REVISED - 11-19-71



1" = 500'



1000  
1+20  
2400

157  
77°17'20"

2450  
E7  
47

530  
'9  
4950

TRI  
one  
thru 10

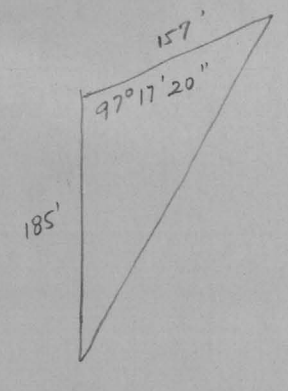
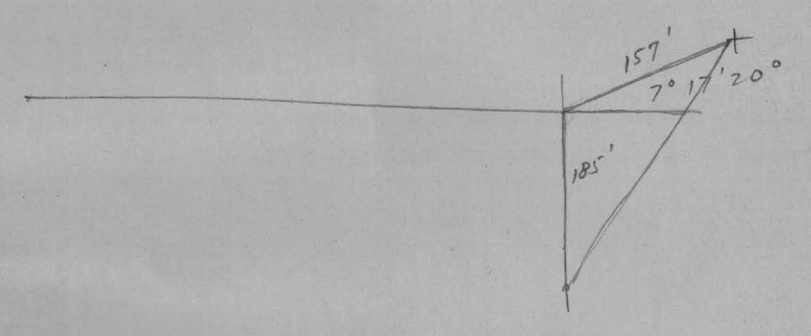
TRI  
10  
thru  
20

TRI  
31 thru 40

T.16S.

MINERALS:  
MS 3204  
TO DEZONIA  
OPTIONED BY  
SUPERIOR-CYPRUS  
EXPIRES  
SURFACE: PATENT  
529020 TO  
DEZONIA  
OPTIONED TO  
SUPERIOR-CYPRUS  
EXPIRES

Success 4 bears  
245° at 20" and  
230' from E-C 20/40



a, c, B

MINERALS and SURFACE:  
PATENT 459948

SURFACE: PATENT 1000287

MINERALS:

MINERALS and SURFACE: STATE IL 87

MINERALS: U.S.

MINERALS and SURFACE: STATE IL 87

MINERALS LEASO TO  
SUPERIOR-CYPRUS, STATE IL 10358  
EXPIRES 4/1/74

SURFACE: PATENT 102301

MINERALS and SURFACE: PATENT 350303

MINERALS and SURFACE:  
STATE

MINERALS and SURFACE:  
STATE 55 16

MINERALS and SURFACE: STATE 55 10

MINERALS: U.S.  
SURFACE: PATENT 108144

SURFACE: PATENT 549200

MINERALS  
MS 4341  
SURFACE  
PATENT  
02-64-0019

MINERALS and SURFACE: STATE IL 38

MINERALS and SURFACE: STATE IL 38

MINERALS: U.S.  
SURFACE: ME PATS

13

MINERALS and SURFACE:  
STATE IL 78

MINERALS and SURFACE: PATENT 816919

MINERALS and SURFACE: STATE IL 59

MINERALS and SURFACE: STATE 50 2/23/1897

24

19

MINERALS and SURFACE:  
PATENT 85460

MINERALS: U.S.  
SURFACE: PATENT 1054017

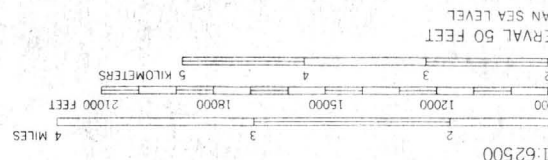
20

MINERALS: U.S.  
SURFACE: PATENT 1104678

MINERALS: U.S.  
SURFACE: PATENT 1056785

MINERALS and SURFACE: PATENT 628827

1958  
DRAGON, ARIZ.  
N3200-W11000/15



ROAD CLASSIFICATION  
Heavy-duty  
Medium-duty  
Light-duty  
Unimproved dirt  
State Route

2640 from 12.1  
Jan 12.1  
2690



174.5  
55° 12' 40"  
3.2' south  
1490  
89° 52' 28"

4100'

PEARCE

DAVID



November 19, 1971

Mr. Maurice Brady  
Superior Oil Company  
Minerals Division  
P.O. Box 12487  
Tucson, Arizona 85711

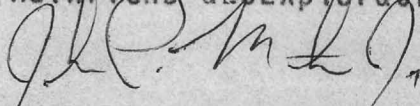
Re: GEOEX Job # 672

Dear Mr. Brady:

Enclosed are two blueline prints showing the location of the T.R.I. claim group, near Johnson, Cochise County, Arizona. Please destroy the preliminary copy presently in your possession as it has several errors and omissions which have been corrected on the final print.

If you have any questions, or if we can be of further assistance, please let us know.

Very truly yours,  
Heinrichs GEOExploration Company

  
John P. Matthews, Jr.  
Geophysicist

JPM:dm  
Enclosures: 2 prints

Superior Oil

Job 672-711

296-5433

11/2/71

Maurice Brady (Mining Engr.)

6520 E. 22nd St.

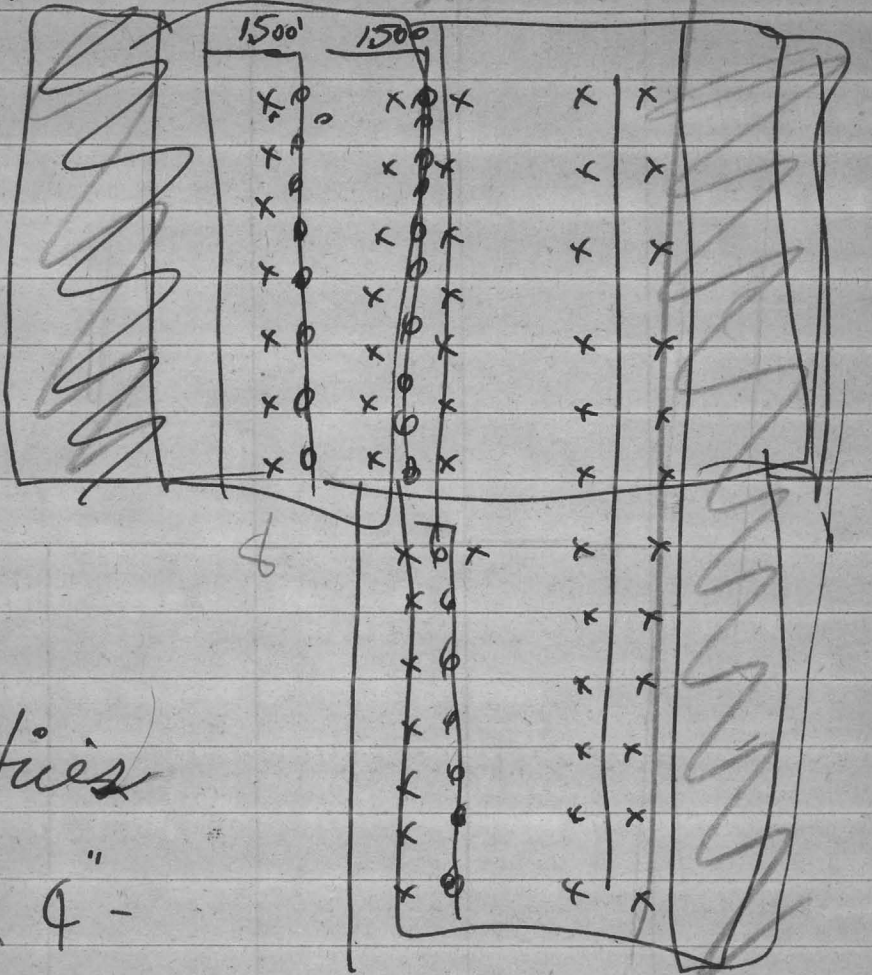
30

15

posts

Up on

hill?



Notices

4" x 4"

52 claims.

\$175<sup>00</sup> / 3 man crew workday  
+ exp.