



CONTACT INFORMATION
Mining Records Curator
Arizona Geological Survey
3550 N. Central Ave, 2nd floor
Phoenix, AZ, 85012
602-771-1601
<http://www.azgs.az.gov>
inquiries@azgs.az.gov

The following file is part of the Cambior Exploration USA Inc. records

ACCESS STATEMENT

These digitized collections are accessible for purposes of education and research. We have indicated what we know about copyright and rights of privacy, publicity, or trademark. Due to the nature of archival collections, we are not always able to identify this information. We are eager to hear from any rights owners, so that we may obtain accurate information. Upon request, we will remove material from public view while we address a rights issue.

CONSTRAINTS STATEMENT

The Arizona Geological Survey does not claim to control all rights for all materials in its collection. These rights include, but are not limited to: copyright, privacy rights, and cultural protection rights. The User hereby assumes all responsibility for obtaining any rights to use the material in excess of "fair use."

The Survey makes no intellectual property claims to the products created by individual authors in the manuscript collections, except when the author deeded those rights to the Survey or when those authors were employed by the State of Arizona and created intellectual products as a function of their official duties. The Survey does maintain property rights to the physical and digital representations of the works.

QUALITY STATEMENT

The Arizona Geological Survey is not responsible for the accuracy of the records, information, or opinions that may be contained in the files. The Survey collects, catalogs, and archives data on mineral properties regardless of its views of the veracity or accuracy of those data.



SPRING CREEK MINE - PLATE 1

EXPLANATION

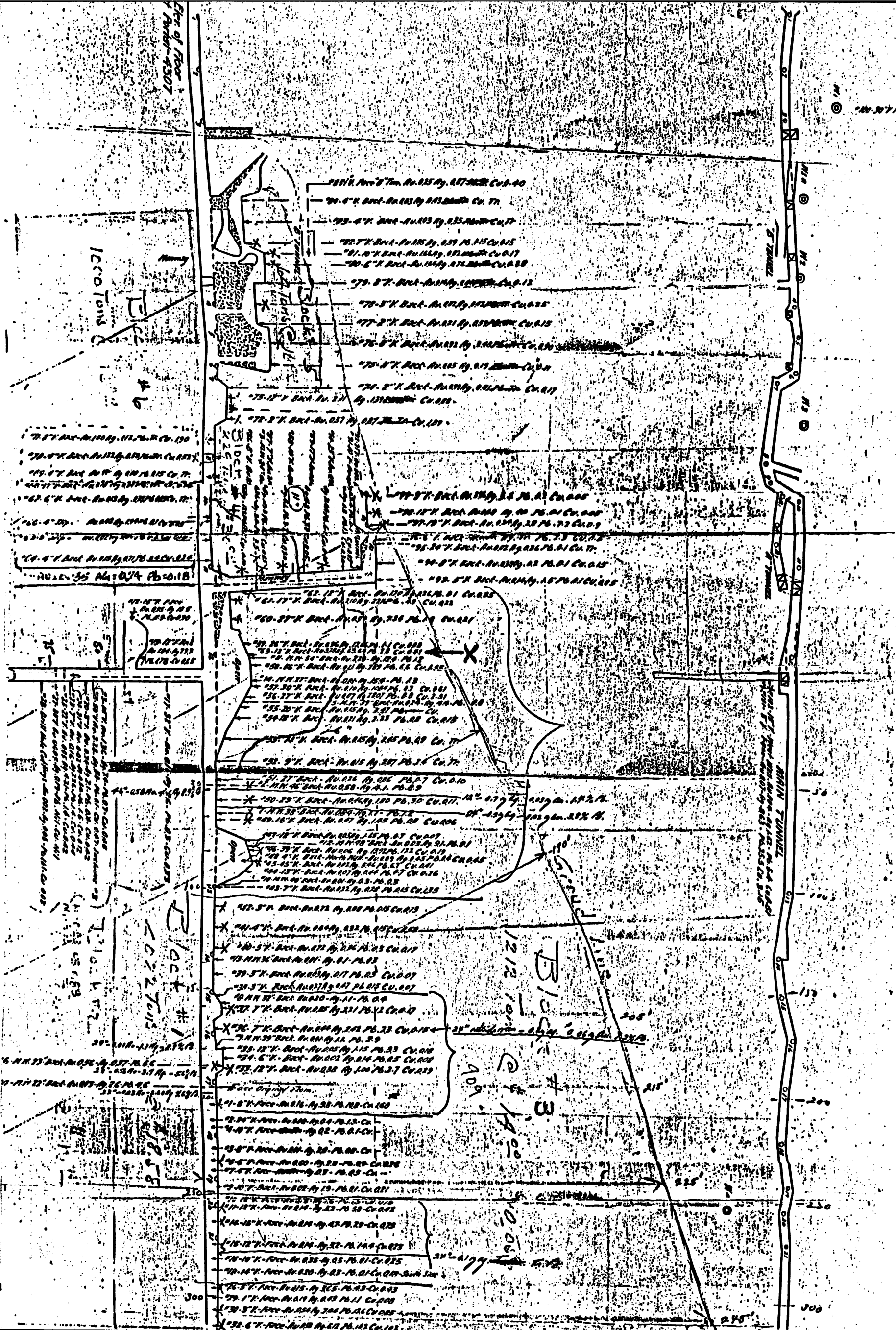
- ↓ 10" 0.35 0.50 = Sample width, Au (oz/t), Ag (oz/t) Old samples (1929?)
- └ 17" 0.45 7.5 = Sample width, Au (oz/t), Ag (oz/t) Channel samples (1987)
- Mineralized shear zones, or veins.
- 15 Survey points 1111 Timbered
- (7" 0.24 2.42) = Sample width, Au (oz/t), Ag (oz/t) Selected old samples in plan view

Scale: 1" = 30'

EXHIBIT "A"

SLM SERIAL NUMBER	NAME OF CLAIM	DOCKET PAGE	NOTICE OF LOCATION POSTED SECTION, TOWNSHIP, RANGE
A MC 66561	Yankee Dollar #1 Amended	483-Pg576,577	Sec.36, T.9N.,R.12E.
A MC 66562	Yankee Dollar #1 Yankee Dollar #2 Amended	499-Pg314-316 483-Pg578&579	Sec.36, T.9N.,R.12E. Sec.36, T.9N.,R.12E.
A MC 66563	Yankee Dollar #2 Yankee Dollar #3 Amended	499-Pg318&319 483-Pg580&581	Sec.36, T.9N.,R.12E. Sec.36, T.9N.,R.12E.
A MC 98676	Yankee Dollar #3	499-Pg320,321&322	Sec.36, T.9N.,R.12E.
A MC 98677	Yankee Dollar #4	495-Pg355&356	Sec.36, T.9N.,R.12E.
A MC 98678	Yankee Dollar #5	495-Pg357&358	Sec.36, T.9N.,R.12E.
A MC 98679	Yankee Dollar #6	495-Pg359&360	Sec.36, T.9N.,R.12E.
A MC 98680	Yankee Dollar #7	495-Pg361&362	Sec.36, T.9N.,R.12E.
A MC 98681	Yankee Dollar #8	495-Pg363&364	Sec.36, T.9N.,R.12E.
A MC 98682	Yankee Dollar #9	495-Pg365&366	Sec.36, T.9N.,R.12E.
A MC 101913	Yankee Dollar #10	495-Pg367&368	Sec.36, T.9N.,R.12E.
A MC 101914	Yankee Dollar #11	499-Pg323,324&325	Sec.36, T.9N.,R.12E.
	Yankee Dollar #12	499-Pg326,327&328	Sec.36, T.9N.,R.12E. G. & S.R.M.

The Yankee Dollar Lode Claims 1 thru 12 are contiguous, consisting of a group

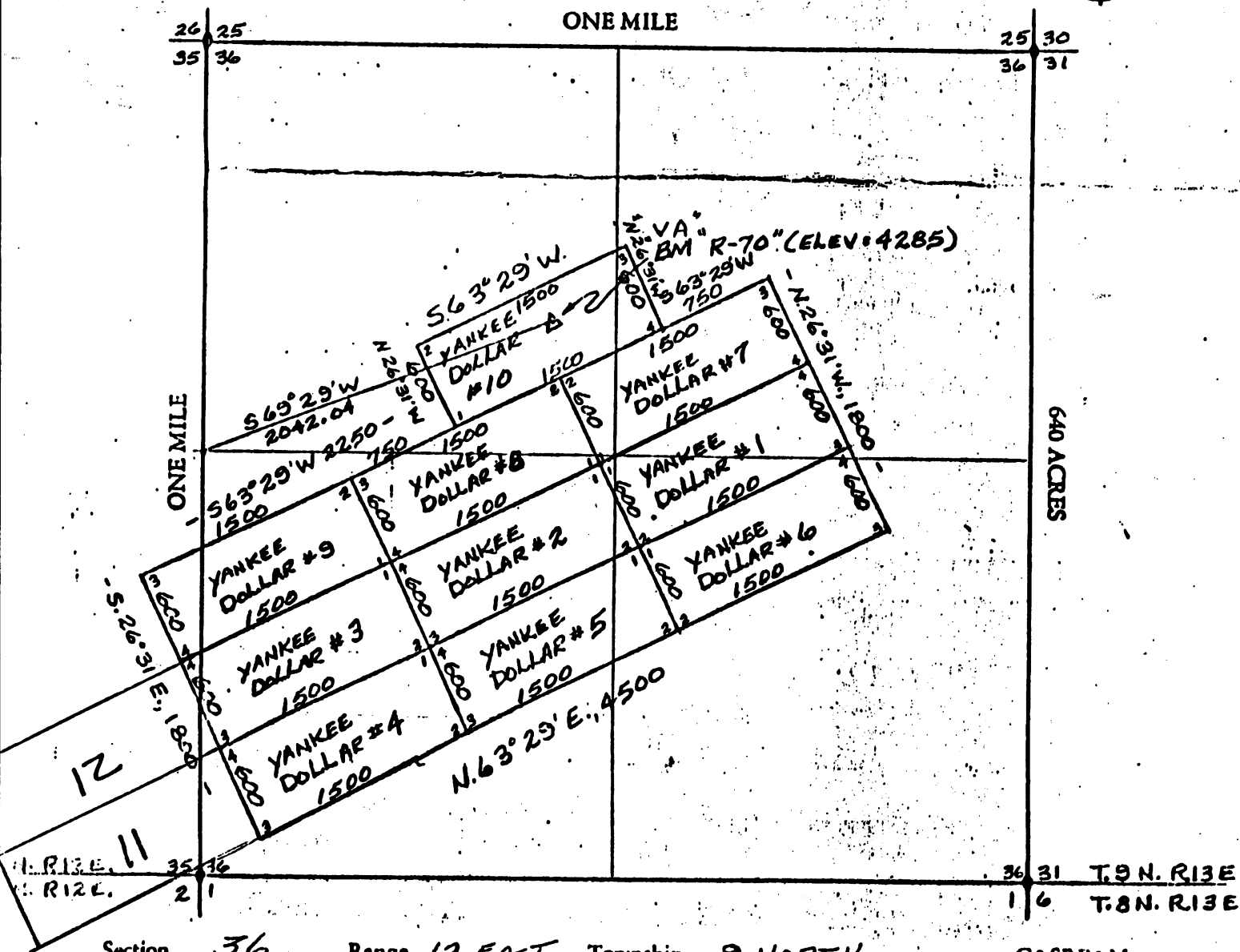


corner of the claim, 600 feet in a N26°31'W direction to the N.W. COR. #2 corner, then 1500 feet in a N63°29'E direction to the N.E. COR. #3 corner, then 600 feet in a S26°31'W direction to the S.E. COR. #4 corner, then 1500 feet in a S63°29'W direction to the point of beginning.

MAP

One inch = One thousand feet.

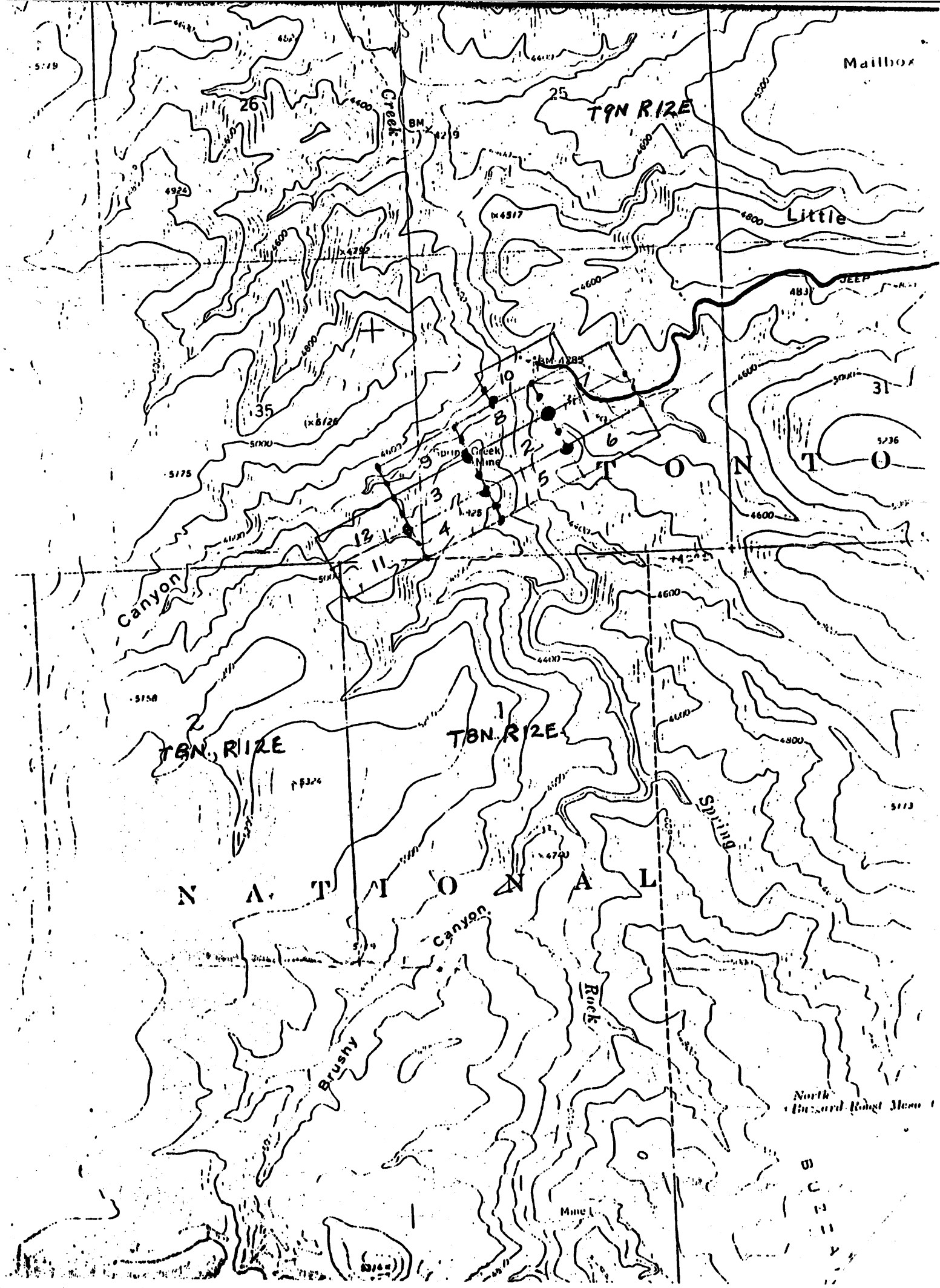
North Arrow



Section 36 Range 12 EAST Township 9 NORTH G&SRB&M

Date March 1, 1980

Lee Fooks
Grant O. Bump
 Signature



Dear Mr Dummett

On 3-25-88 I talked to Mr Paul Taylor in Denver and he suggested I send the enclosed data to you in Tucson.

Enclosed is data on a gold prospect in central AZ that Westmont may be interested in. I represent the owner and have seen the property. In my opinion it is an excellent prospect with the potential of becoming a good small underground gold producer. The mineralization is all oxidized and exposed in the adit and would be amenable to leaching.

If you are interested please let me know at home (602) 425-7200 or daytime (602) 473-2421.

Several months ago we had the underground channel sampling checked and the values appear to be real. Also the property has never been drilled or well mapped.

Sincerely

Clyde Carviness

Clyde Carviness

Geological Eng.

RT 1 Box 98, Globe AZ

Globe AZ 85501

Table 1

Comparison of Two Sets of Sampling Results - Spring Creek Project

OLD SAMPLES			NEW SAMPLES			Diff. (%) of New as compared to Old data. (width x oz/t)
width (in.)	oz/t Au	oz/t x width	width (in.)	oz/t Au	oz/t x width	
2	0.99	1.980	8	0.021	1.680	- 15
2	1.40	2.800	8	0.246	1.968	- 30
16	0.58	9.280	5	2.031	10.155	+ 9
16	0.47	7.520	10	0.704	7.040	- 6
7	0.22	1.540	17	0.063	1.071	- 30
3	0.72	2.160	4	0.425	1.700	- 21
4	0.64	2.560	17	0.007	0.119	- 95
36	0.001	0.036	38	0.012	0.456	+ 92
3	0.003	0.009	40	0.007	0.280	+ 97
3	0.27	0.810	8	0.087	0.696	- 14
7	0.44	3.080	8	1.170	9.360	+ 67
29	0.01	0.290	24	0.029	0.696	+ 58
8	0.36	2.880	14	0.205	2.870	- 0.3
22	0.15	3.30	28	0.022	0.616	- 81
8	0.16	1.28	15	0.033	0.495	- 61
24	0.08	1.92	11	0.040	0.440	- 77
8	0.01	0.08	10	0.248	2.480	+ 96
12	0.15	1.800	11	0.277	3.047	+ 41
10	0.35*	3.500	3	0.262	0.786	- 78
10	0.35*	3.500	12	0.046	0.552	- 98
1	0.19	0.190	16	0.460	7.360	+ 99
6	0.58	3.48	10	0.065	0.650	- 81
237	0.228	53.995	317	0.172	54.517	+ 1 % *

* Based on comparison of the sum the products of widths x oz/t Au of New and Old data.

Nyde Carviness
RT 1 Box 98
Globe AZ 85501

POST PAID

Hugh Dimmick
Westmont Mines
2341 S. Freher #12
Tucson AZ 85713

