



CONTACT INFORMATION  
Mining Records Curator  
Arizona Geological Survey  
416 W. Congress St., Suite 100  
Tucson, Arizona 85701  
602-771-1601  
<http://www.azgs.az.gov>  
[inquiries@azgs.az.gov](mailto:inquiries@azgs.az.gov)

The following file is part of the Fred Hohne Mining Collection

#### **ACCESS STATEMENT**

These digitized collections are accessible for purposes of education and research. We have indicated what we know about copyright and rights of privacy, publicity, or trademark. Due to the nature of archival collections, we are not always able to identify this information. We are eager to hear from any rights owners, so that we may obtain accurate information. Upon request, we will remove material from public view while we address a rights issue.

#### **CONSTRAINTS STATEMENT**

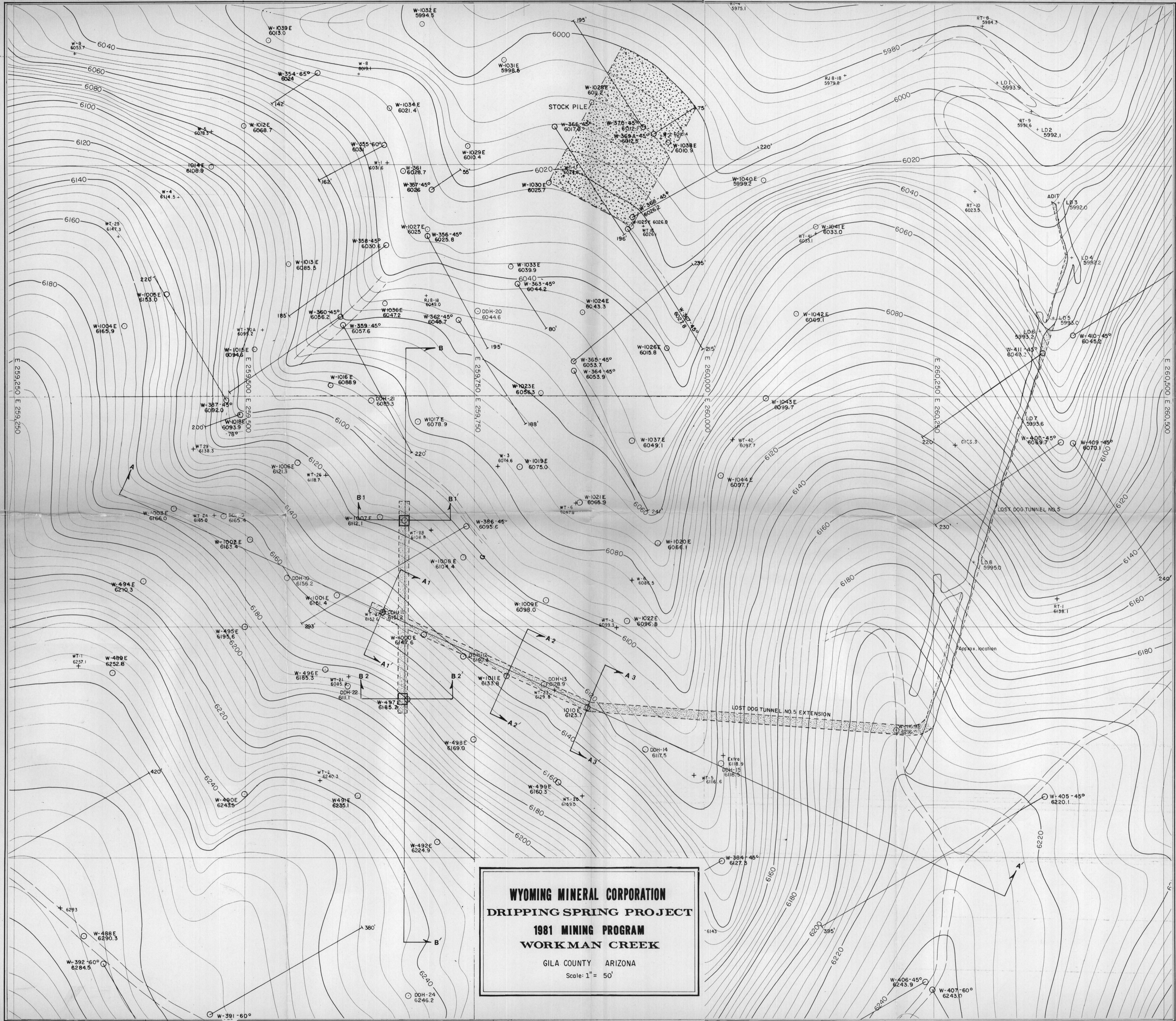
The Arizona Geological Survey does not claim to control all rights for all materials in its collection. These rights include, but are not limited to: copyright, privacy rights, and cultural protection rights. The User hereby assumes all responsibility for obtaining any rights to use the material in excess of "fair use."

The Survey makes no intellectual property claims to the products created by individual authors in the manuscript collections, except when the author deeded those rights to the Survey or when those authors were employed by the State of Arizona and created intellectual products as a function of their official duties. The Survey does maintain property rights to the physical and digital representations of the works.

#### **QUALITY STATEMENT**

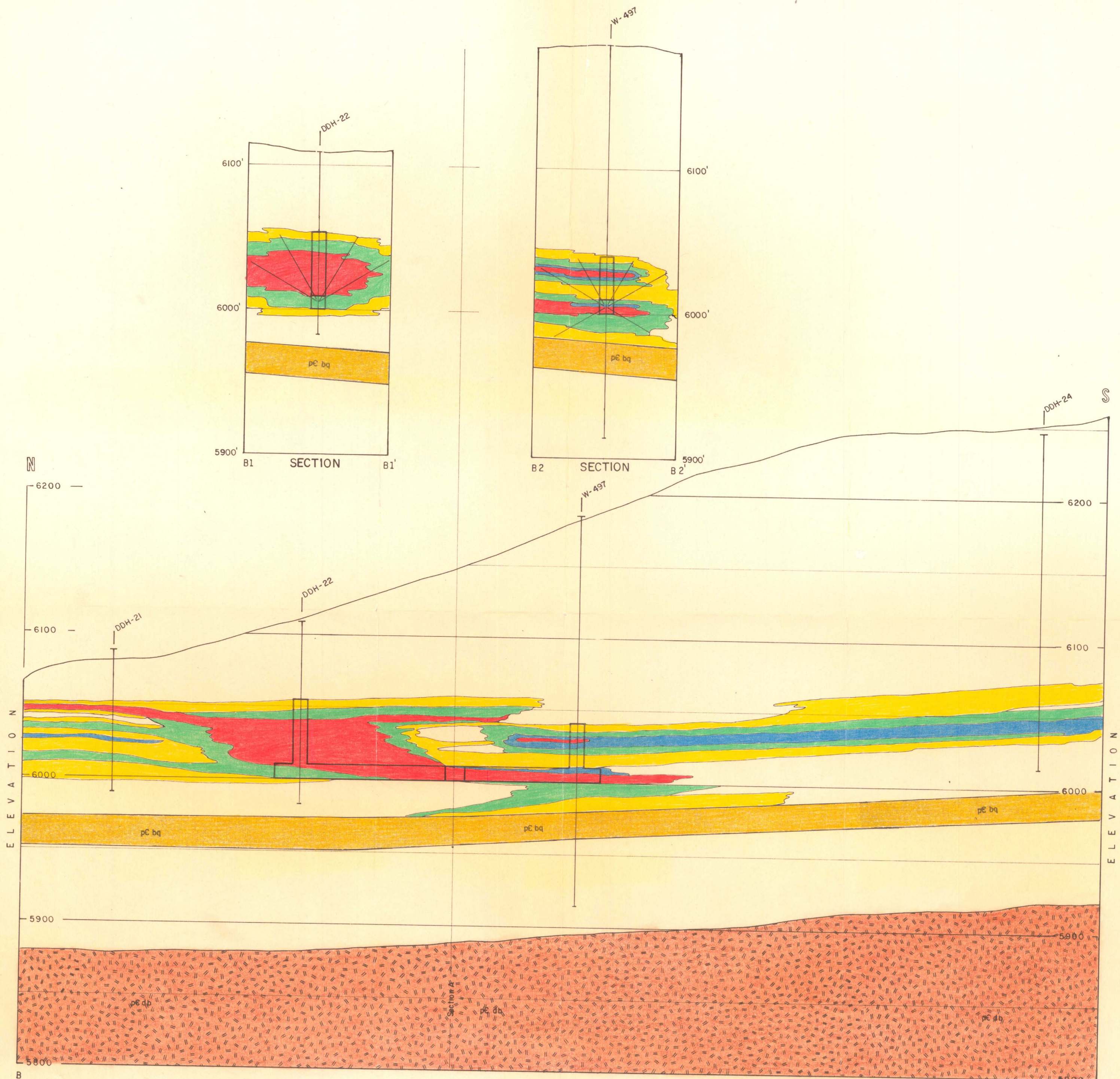
The Arizona Geological Survey is not responsible for the accuracy of the records, information, or opinions that may be contained in the files. The Survey collects, catalogs, and archives data on mineral properties regardless of its views of the veracity or accuracy of those data.











**WYOMING MINERAL CORPORATION**  
**DRIPPING SPRING PROJECT**  
**1981 MINING PROGRAM**  
**WORKMAN CREEK**  
GILA COUNTY ARIZONA  
Scale: 1" = 50'



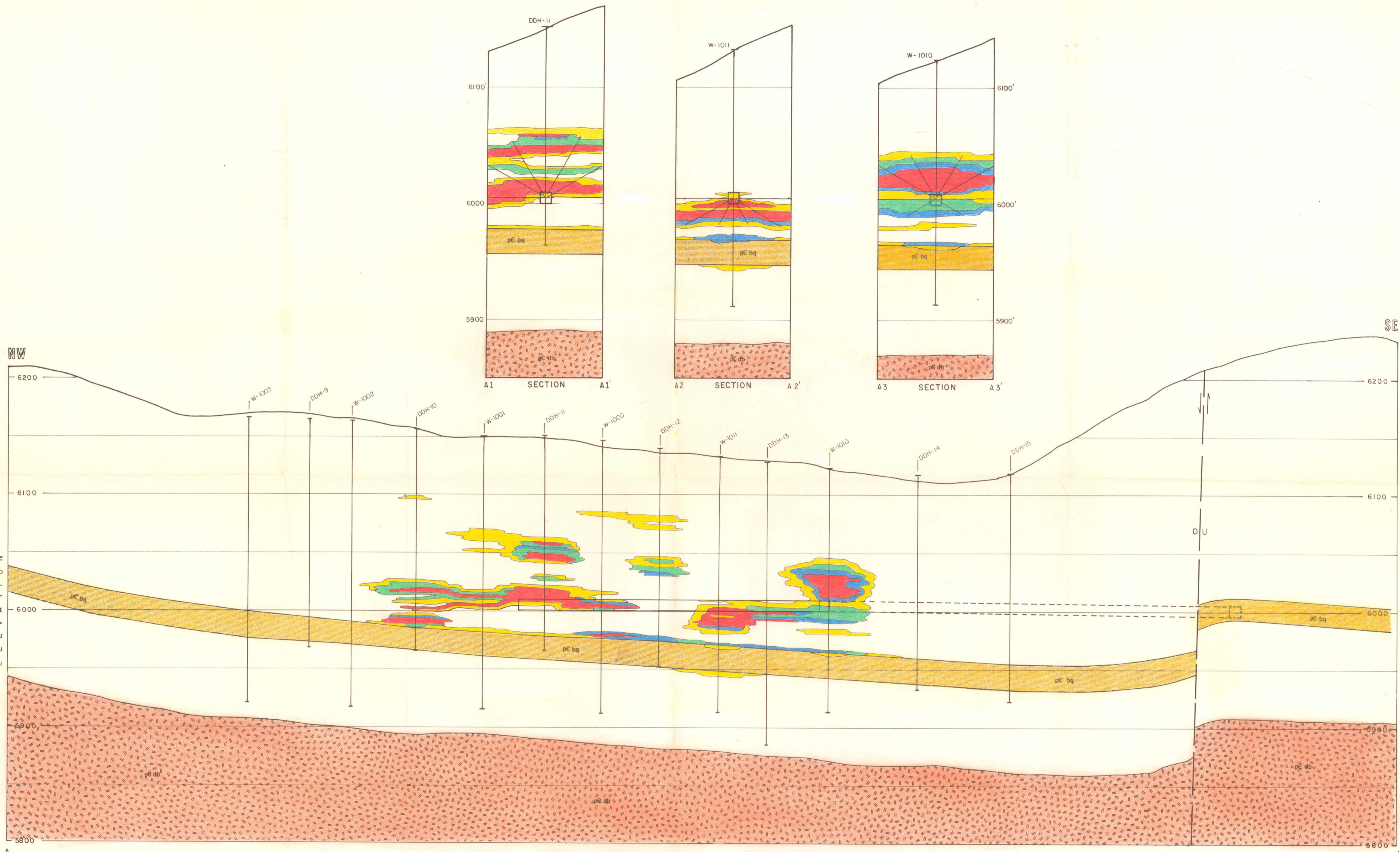


**SECTION B-B'**  
 LOOKING EAST  
 SO. WORKMAN CREEK  
 DRIPPING SPRING PROJECT  
 GILA COUNTY, ARIZONA  
 Scale: 1" = 50'

**EXPLANATION**

	- 0.02 - 0.049		Barren quartzite
	- 0.05 - 0.074		Diabase
	- 0.75 - 0.10		
	> 0.10		





**SECTION A-A'**  
 LOOKING NE  
**SO. WORKMAN CREEK**  
**DRIPPING SPRING PROJECT**  
 GILA COUNTY, ARIZONA  
 Scale: 1" = 50'

EXPLANATION	
ORE GRADES	
[Yellow Box]	- 0.02 - 0.049
[Green Box]	- 0.05 - 0.074
[Blue Box]	- 0.75 - 0.10
[Red Box]	> 0.10
[Yellow Box with 'pc bq' label]	Barran quartzite
[Red Box with 'pc db' label]	Diabase