

CONTACT INFORMATION
Mining Records Curator
Arizona Geological Survey
3550 N. Central Ave, 2nd floor
Phoenix, AZ, 85012
602-771-1601
<http://www.azgs.az.gov>
inquiries@azgs.az.gov

The following file is part of the John E. Kinnison mining collection

ACCESS STATEMENT

These digitized collections are accessible for purposes of education and research. We have indicated what we know about copyright and rights of privacy, publicity, or trademark. Due to the nature of archival collections, we are not always able to identify this information. We are eager to hear from any rights owners, so that we may obtain accurate information. Upon request, we will remove material from public view while we address a rights issue.

CONSTRAINTS STATEMENT

The Arizona Geological Survey does not claim to control all rights for all materials in its collection. These rights include, but are not limited to: copyright, privacy rights, and cultural protection rights. The User hereby assumes all responsibility for obtaining any rights to use the material in excess of "fair use."

The Survey makes no intellectual property claims to the products created by individual authors in the manuscript collections, except when the author deeded those rights to the Survey or when those authors were employed by the State of Arizona and created intellectual products as a function of their official duties. The Survey does maintain property rights to the physical and digital representations of the works.

QUALITY STATEMENT

The Arizona Geological Survey is not responsible for the accuracy of the records, information, or opinions that may be contained in the files. The Survey collects, catalogs, and archives data on mineral properties regardless of its views of the veracity or accuracy of those data.



SCALE 1:62,500

1 2 3 4 MILES

3000 0 3000 6000 9000 12000 15000 18000 21000 FEET

1 2 3 4 5 KILOMETERS

ROAD CLASSIFICATION

Light duty _____ Unimproved dirt

CONTOUR INTERVAL 80 FEET
DOTTED LINES REPRESENT 40-FOOT CONTOURS
DATUM IS MEAN SEA LEVEL

LOST BASIN GOLD PLACERS

sampled by *JE Kirkman*
S. Zelazny
June, 1968

ARIZONA

LOCALITY LOCATION

GARNET MTN., ARIZ.
N3545-W1400/15

1960

THIS MAP COMPLIES WITH NATIONAL MAP ACCURACY STANDARDS
FOR SALE BY U.S. GEOLOGICAL SURVEY, DENVER, COLORADO 80225 OR WASHINGTON, D.C. 20242
A FOLDER DESCRIBING TOPOGRAPHIC MAPS AND SYMBOLS IS AVAILABLE ON REQUEST

AMS 3155 I—SERIES V798

Gold Basin.

Upper Mountain Mine - U_3O_8 , Cu

Cyclops Group - Au, min

Senator & Salt Springs.

20 Porets

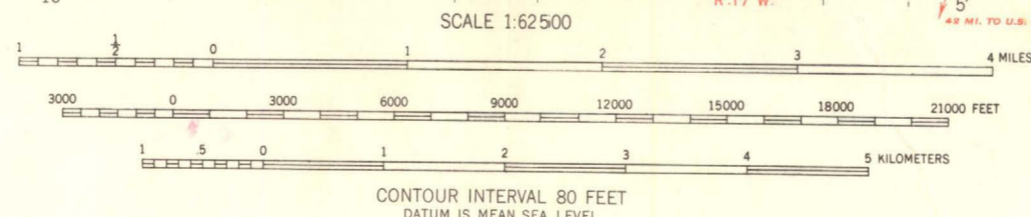
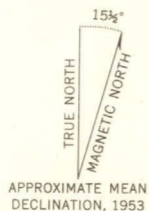
OVERTON BEACH

UNITED STATES
DEPARTMENT OF THE INTERIOR
GEOLOGICAL SURVEY

ICEBERG CANYON QUADRANGLE
NEVADA—ARIZONA
15 MINUTE SERIES (TOPOGRAPHIC)



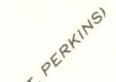
Mapped, edited and published by the Geological Survey
Control by USGS and USC&GS
Topography from aerial photographs by multiplex methods
Aerial photographs taken 1950. Field check 1953
Underwater contours compiled from USDA maps
and later sedimentation studies
Polyconic projection. 1927 North American datum
10,000-foot grid based on Nevada coordinate system, east zone
and Arizona coordinate system, west zone
Dashed land lines indicate approximate locations
Unchecked elevations are shown in brown



ROAD CLASSIFICATION
Heavy-duty ——— 4 LANE 16 LANE Light-duty ———
Medium-duty ——— 4 LANE 16 LANE Unimproved dirt ———
U. S. Route ——— State Route ———

ICEBERG CANYON, NEV.—ARIZ.
N3600—W11400/15
1953

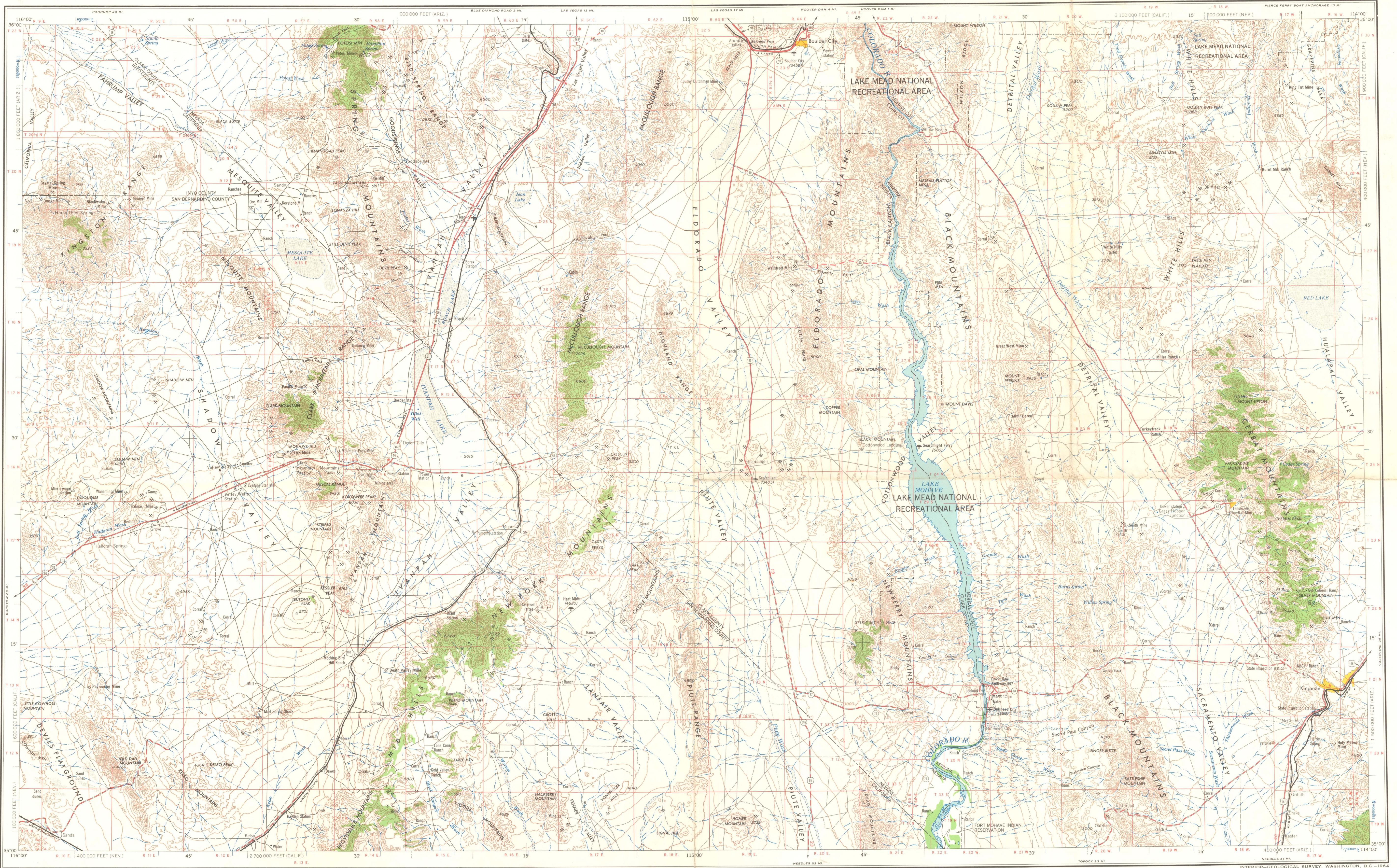
THIS MAP COMPLIES WITH NATIONAL MAP ACCURACY STANDARDS
FOR SALE BY U. S. GEOLOGICAL SURVEY, FEDERAL CENTER, DENVER, COLORADO OR WASHINGTON 25, D. C.
A FOLDER DESCRIBING TOPOGRAPHIC MAPS AND SYMBOLS IS AVAILABLE ON REQUEST



SENATOR MOUNTAIN, ARIZ.
N3545—W11415/15

1960

THIS MAP COMPLIES WITH NATIONAL MAP ACCURACY STANDARDS
FOR SALE BY U.S. GEOLOGICAL SURVEY, DENVER 25, COLORADO OR WASHINGTON 25, D. C.
A FOLDER DESCRIBING TOPOGRAPHIC MAPS AND SYMBOLS IS AVAILABLE ON REQUEST



Prepared by the Army Map Service (GSA), Corps of Engineers, U.S. Army, Washington, D.C. Compiled in 1956 by U.S. Coast and Geodetic Survey by photogrammetric methods and from USGS quadrangle, 1:62,500, 1950. Planimetric detail revised by photogrammetric methods. Horizontal and vertical control by USGS, USCGS and USGS. Photographic field annotated 1954. Limited revision by U.S. Geological Survey, 1963.

100,000-foot grids based on California coordinate system, zone 5, on Arizona coordinate system, west zone, and on Nevada coordinate system, east zone.

10,000-meter Universal Transverse Mercator grid ticks, zone 11, shown in blue.

