

CONTACT INFORMATION
Mining Records Curator
Arizona Geological Survey
3550 N. Central Ave, 2nd floor
Phoenix, AZ, 85012
602-771-1601
<http://www.azgs.az.gov>
inquiries@azgs.az.gov

The following file is part of the John E. Kinnison mining collection

ACCESS STATEMENT

These digitized collections are accessible for purposes of education and research. We have indicated what we know about copyright and rights of privacy, publicity, or trademark. Due to the nature of archival collections, we are not always able to identify this information. We are eager to hear from any rights owners, so that we may obtain accurate information. Upon request, we will remove material from public view while we address a rights issue.

CONSTRAINTS STATEMENT

The Arizona Geological Survey does not claim to control all rights for all materials in its collection. These rights include, but are not limited to: copyright, privacy rights, and cultural protection rights. The User hereby assumes all responsibility for obtaining any rights to use the material in excess of "fair use."

The Survey makes no intellectual property claims to the products created by individual authors in the manuscript collections, except when the author deeded those rights to the Survey or when those authors were employed by the State of Arizona and created intellectual products as a function of their official duties. The Survey does maintain property rights to the physical and digital representations of the works.

QUALITY STATEMENT

The Arizona Geological Survey is not responsible for the accuracy of the records, information, or opinions that may be contained in the files. The Survey collects, catalogs, and archives data on mineral properties regardless of its views of the veracity or accuracy of those data.

ORIGINAL
EAST PIMA
WORK SECTIONS

E-W

Kinnison

SAN XAVIER INDIAN RESERVATION

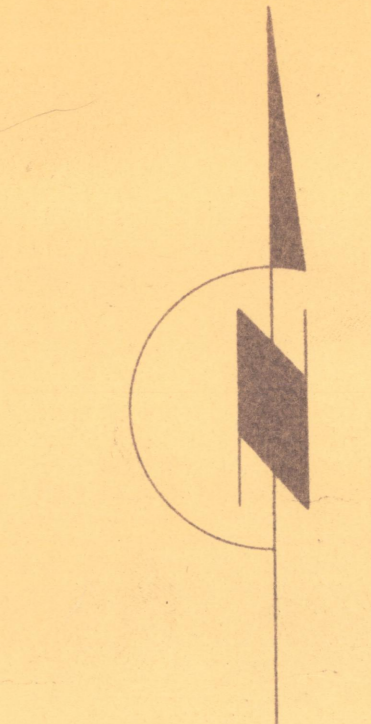
ORE BODY
 Calculation of August 16, 1956

EXTENSIONS

1
 2
 3
 4
 5
 6
 7
 8
 9
 10
 11
 12
 13
 14
 15
 16
 17
 18
 19
 20
 21
 22
 23
 24
 25
 26
 27
 28
 29
 30
 31
 32
 33
 34
 35
 36
 37
 38
 39
 40
 41
 42
 43
 44
 45
 46
 47
 48
 49
 50
 51
 52
 53
 54
 55
 56
 57
 58
 59
 60
 61
 62
 63
 64
 65
 66
 67
 68
 69
 70
 71
 72
 73
 74
 75
 76
 77
 78
 79
 80
 81
 82
 83
 84
 85
 86
 87
 88
 89
 90
 91
 92
 93
 94
 95
 96
 97
 98
 99
 100

Calculation of January 9, 1957

Calculation of April 19, 1957



EXPLANATION

GEOLOGIC NOTES

Existing marble, all rock types are hydrothermally altered and replaced by pyrite, copper sulfides, and various silicates.

Geology projected to flat laying sub-outcrop or bedrock surface at elevations of 3050 to 3070.

Outlines of primary chalcocite ore (1-60% Cu) which existed at present bedrock surface prior to leaching and enrichment.

Quartz-feldspar matrix

Sedimentary rock recrystallized to produce igneous-like texture.

Met limestone

Metasomized limestone (replaced by silicates and sulphides).

ORE INTERCEPTS IN DRILL HOLES

- Depth to top of ore
 - Length of ore intercept
 - Average % Cu (1:40 cutoff)
 - Possible open pit ore (122 intercept includes a 2' layer of low grade in the average grade of 1.1% Cu)
 - Total depth of hole
 - Holes with intercepts of indicated open pit ore.
 - Holes with intercepts of ore grade material, probably too deep for open pit mining.
 - ✓ Holes drifting
- DDH 141 NO ORE 303 TD
- DDH 142 NO ORE 306 TD
- DDH 143 NO ORE 306 TD
- DDH 144 NO ORE 306 TD
- DDH 145 NO ORE 306 TD

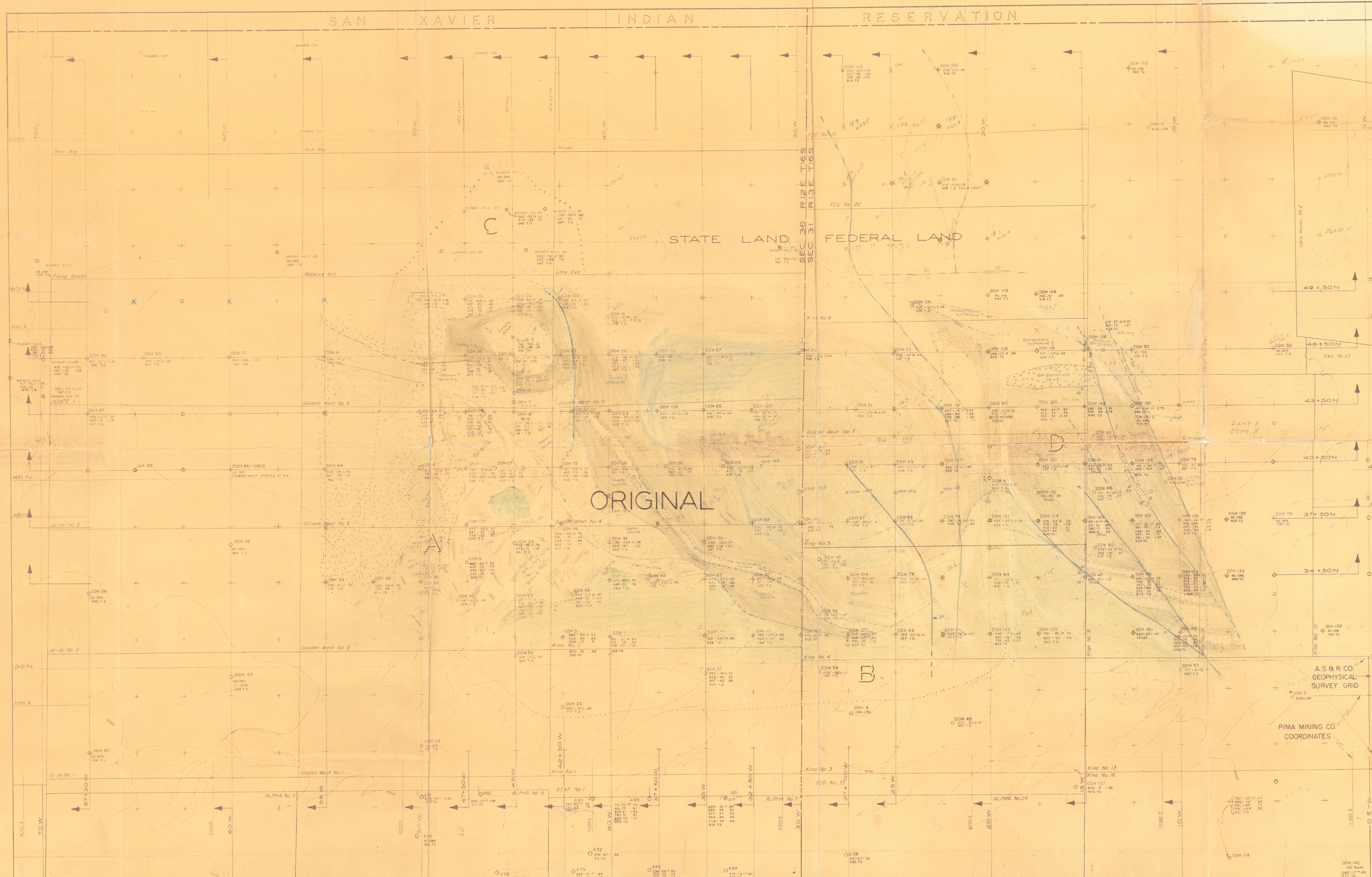
PROPOSED DRILL HOLES

- Locations prepared
- To be drilled next
- Additional proposed holes

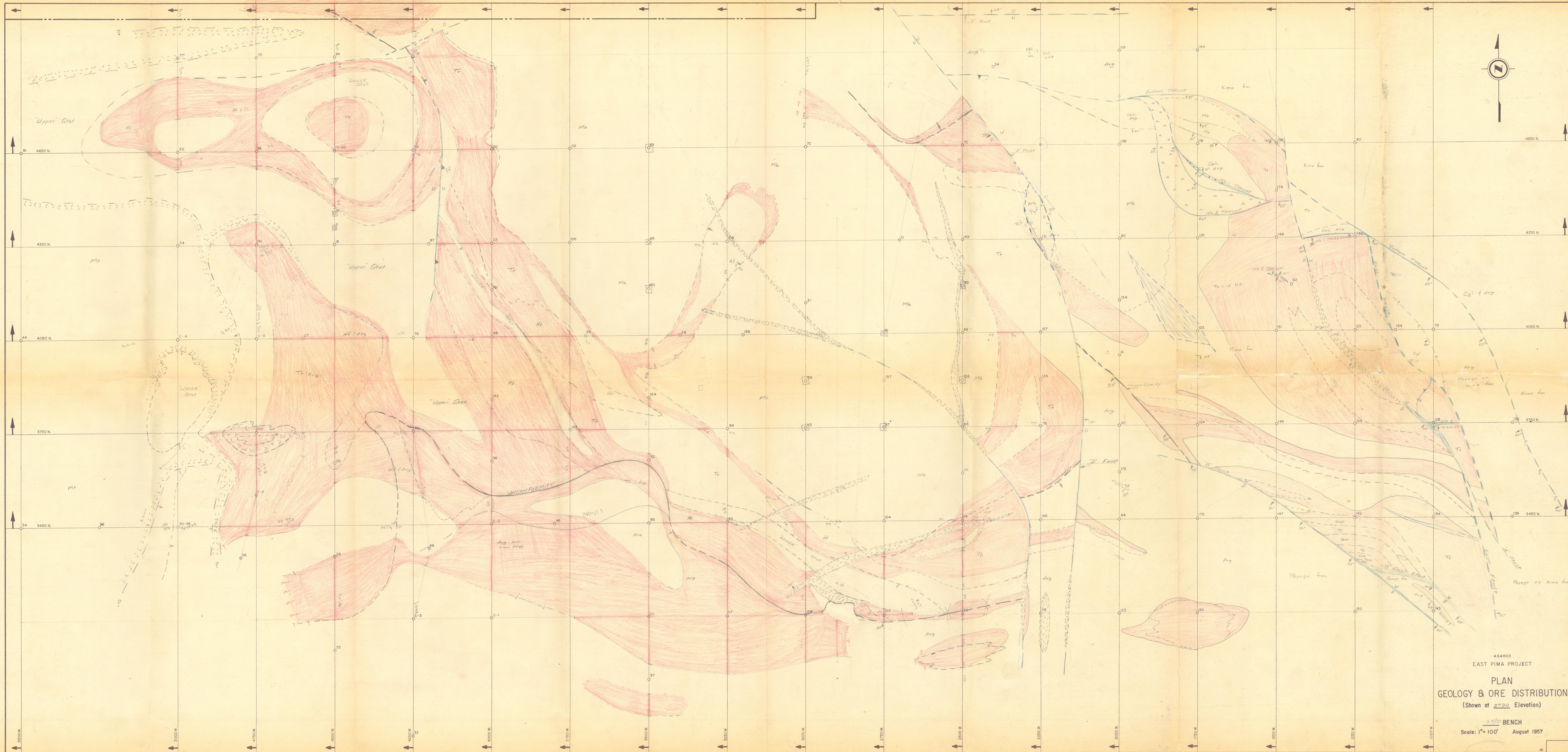
A.S. & R. CO. GEOPHYSICAL SURVEY GRID

PIMA MINING CO. COORDINATES

2800 LEVEL GEOLOGY



ORIGINAL



ASARCO
EAST PIMA PROJECT
PLAN
GEOLOGY & ORE DISTRIBUTION
(Shown at 2730 Elevation)
2770 BENCH
Scale: 1" = 100' August 1957

WOOD

WOOD

WOOD

WOOD

WOOD

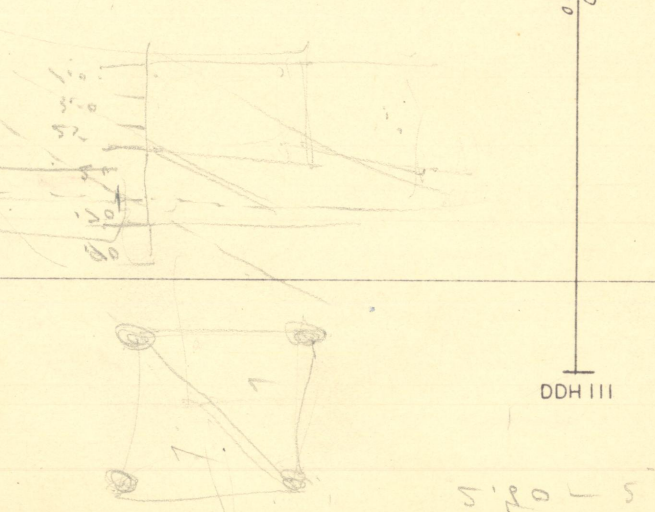
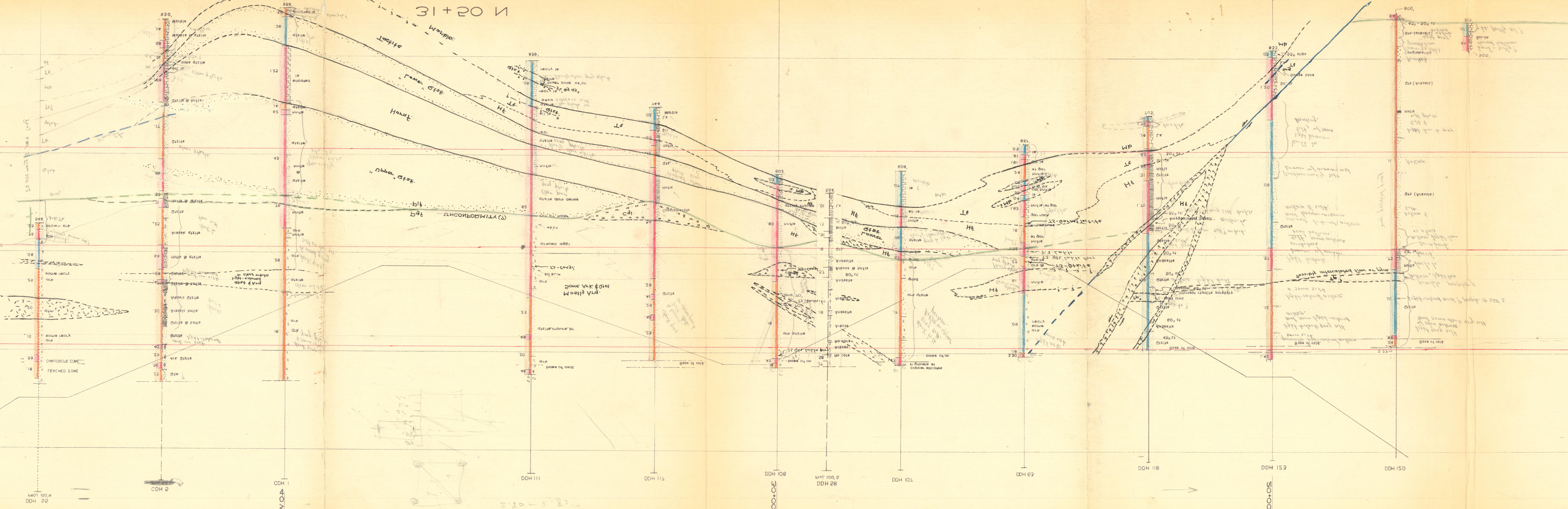
WOOD

WOOD

5400
5000
5800
6000
6500

5400
5000
5800
6000
6500

016 Reserve Estimate 8-18-26
Open Pit det



Handwritten notes and annotations at the bottom center, including the number '100' and other illegible characters.

31+20 N

31+20 N

