



CONTACT INFORMATION  
Mining Records Curator  
Arizona Geological Survey  
416 W. Congress St., Suite 100  
Tucson, Arizona 85701  
602-771-1601  
<http://www.azgs.az.gov>  
[inquiries@azgs.az.gov](mailto:inquiries@azgs.az.gov)

The following file is part of the Grover Heinrichs Mining Collection

#### **ACCESS STATEMENT**

These digitized collections are accessible for purposes of education and research. We have indicated what we know about copyright and rights of privacy, publicity, or trademark. Due to the nature of archival collections, we are not always able to identify this information. We are eager to hear from any rights owners, so that we may obtain accurate information. Upon request, we will remove material from public view while we address a rights issue.

#### **CONSTRAINTS STATEMENT**

The Arizona Geological Survey does not claim to control all rights for all materials in its collection. These rights include, but are not limited to: copyright, privacy rights, and cultural protection rights. The User hereby assumes all responsibility for obtaining any rights to use the material in excess of "fair use."

The Survey makes no intellectual property claims to the products created by individual authors in the manuscript collections, except when the author deeded those rights to the Survey or when those authors were employed by the State of Arizona and created intellectual products as a function of their official duties. The Survey does maintain property rights to the physical and digital representations of the works.

#### **QUALITY STATEMENT**

The Arizona Geological Survey is not responsible for the accuracy of the records, information, or opinions that may be contained in the files. The Survey collects, catalogs, and archives data on mineral properties regardless of its views of the veracity or accuracy of those data.

DEPARTMENT OF THE INTERIOR  
UNITED STATES GEOLOGICAL SURVEY

AEROMAGNETIC MAP OF THE CENTRAL PART OF  
SAN MIGUEL COUNTY, NEW MEXICO

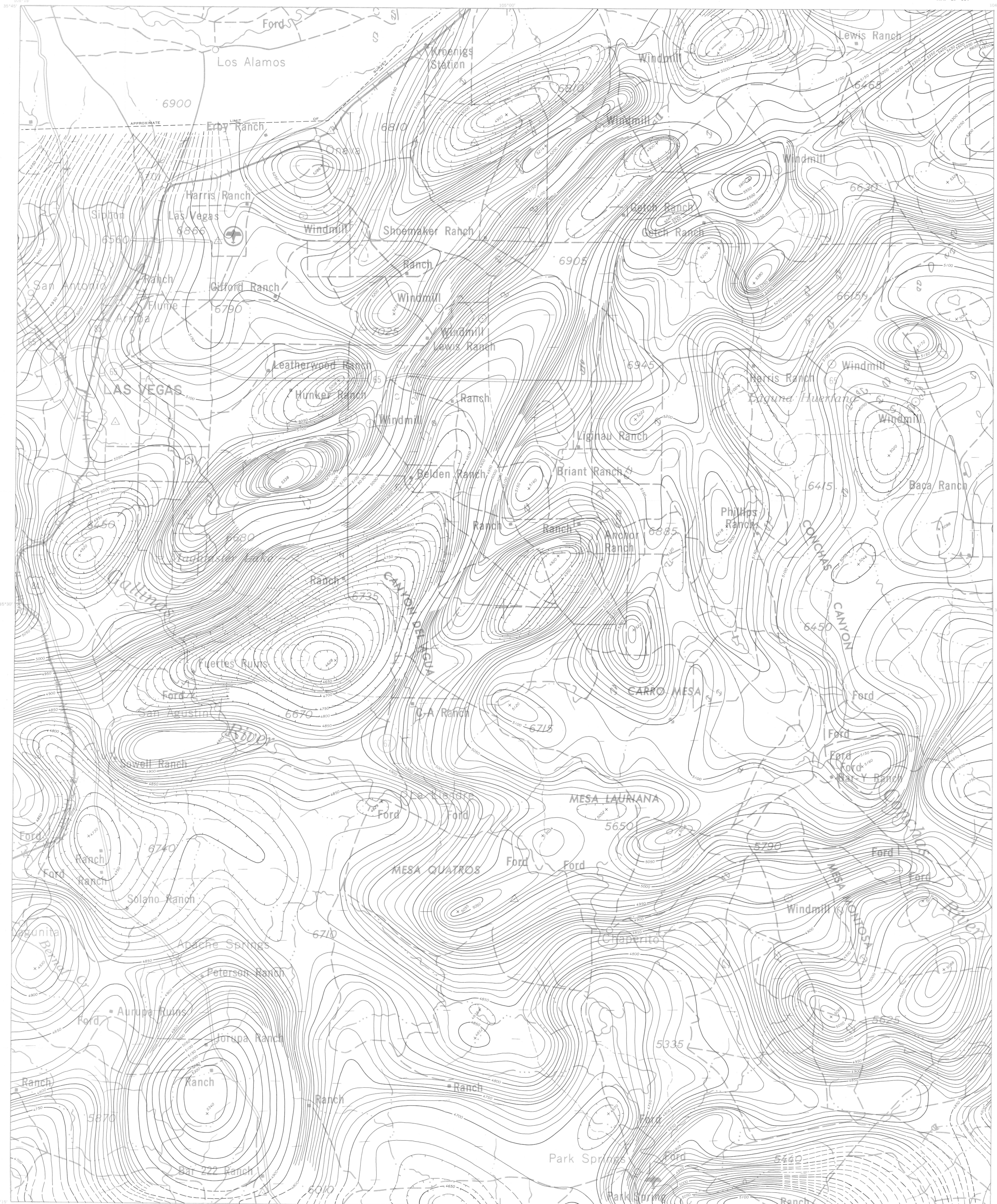
By

William J. Dempsey, Frank A. Petrafeso, and others

GEOPHYSICAL INVESTIGATIONS  
MAP GP-357



PUBLISHED BY THE U. S. GEOLOGICAL SURVEY  
WASHINGTON, D. C.  
1963



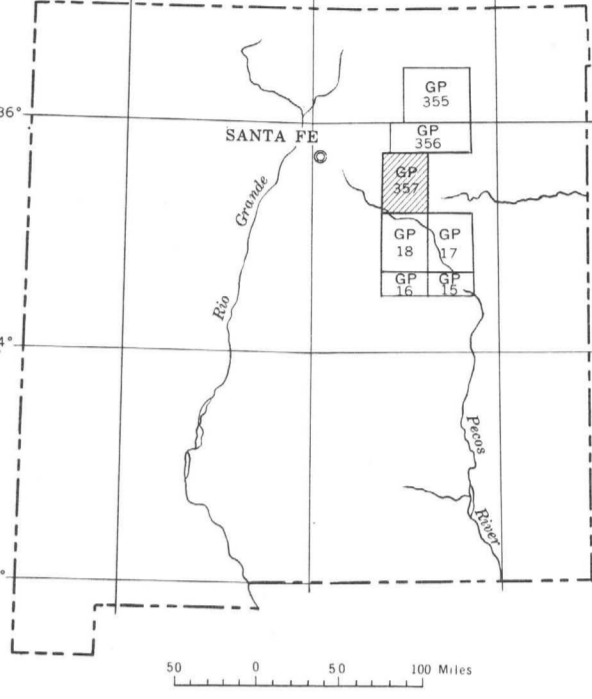
EXPLANATION

Magnetic contours showing total intensity magnetic field of the earth in gammas relative to arbitrary datum  
Hachured to indicate closed areas of lower magnetic intensity, dashed where data are incomplete

Measured maximum or minimum intensity within closed high or closed low

Flight path  
Showing location and spacing of data

NOTE  
Aeromagnetic data are obtained and compiled along a continuous line, whereas ground magnetic surveys are made of separate points. Errors within the normal limits of any magnetic measurement may cause slight discrepancies between flight lines on an aeromagnetic map, which would be more obvious than similar discrepancies between points in a ground magnetic map. For this reason as much care should be exercised in evaluating magnetic features that appear as elongations along a single aeromagnetic traverse as in interpreting an anomaly indicated by a single ground station.



INDEX MAP OF NEW MEXICO SHOWING AEROMAGNETIC MAPS PUBLISHED BY THE U.S. GEOLOGICAL SURVEY

AEROMAGNETIC MAP OF THE CENTRAL PART OF SAN MIGUEL COUNTY, NEW MEXICO

By  
William J. Dempsey, Frank A. Petrafeso, and others

