



CONTACT INFORMATION
Mining Records Curator
Arizona Geological Survey
416 W. Congress St., Suite 100
Tucson, Arizona 85701
602-771-1601
<http://www.azgs.az.gov>
inquiries@azgs.az.gov

The following file is part of the Grover Heinrichs Mining Collection

ACCESS STATEMENT

These digitized collections are accessible for purposes of education and research. We have indicated what we know about copyright and rights of privacy, publicity, or trademark. Due to the nature of archival collections, we are not always able to identify this information. We are eager to hear from any rights owners, so that we may obtain accurate information. Upon request, we will remove material from public view while we address a rights issue.

CONSTRAINTS STATEMENT

The Arizona Geological Survey does not claim to control all rights for all materials in its collection. These rights include, but are not limited to: copyright, privacy rights, and cultural protection rights. The User hereby assumes all responsibility for obtaining any rights to use the material in excess of "fair use."

The Survey makes no intellectual property claims to the products created by individual authors in the manuscript collections, except when the author deeded those rights to the Survey or when those authors were employed by the State of Arizona and created intellectual products as a function of their official duties. The Survey does maintain property rights to the physical and digital representations of the works.

QUALITY STATEMENT

The Arizona Geological Survey is not responsible for the accuracy of the records, information, or opinions that may be contained in the files. The Survey collects, catalogs, and archives data on mineral properties regardless of its views of the veracity or accuracy of those data.


GSA Bull. vol. 20, 1959,

p. 1788

CALDERA SUBSIDENCE IN THE CREEDE AREA, SAN JUAN MOUNTAINS,
COLORADO

✓
Thomas A. Steven and James C. Ratté

U. S. Geological Survey, Denver Federal Center, Denver, Colo.



GSA Bull. vol. 71, 1960, p. 1825



ibidem, p 1958

PRIMARY FLUID INCLUSIONS IN SPHALERITE CRYSTALS FROM THE OH VEIN,
CREEDE, COLORADO

Edwin Roedder

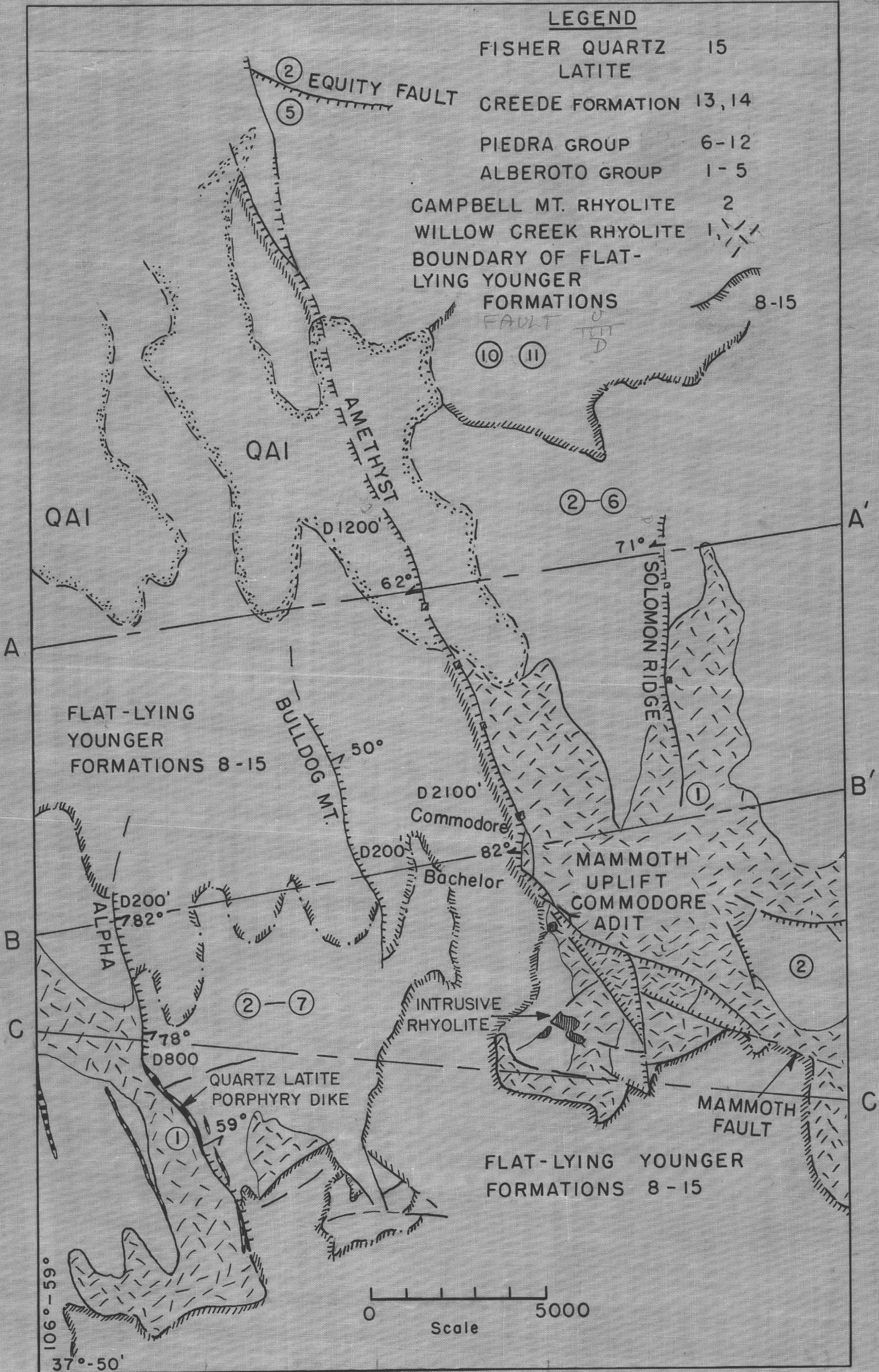


W. 20

LEGEND

- FISHER QUARTZ LATITE 15
- CREEDE FORMATION 13, 14
- PIEDRA GROUP 6-12
- ALBEROTO GROUP 1-5
- CAMPBELL MT. RHYOLITE 2
- WILLOW CREEK RHYOLITE 1
- BOUNDARY OF FLAT-LYING YOUNGER FORMATIONS 8-15

FAULT
TFT
D

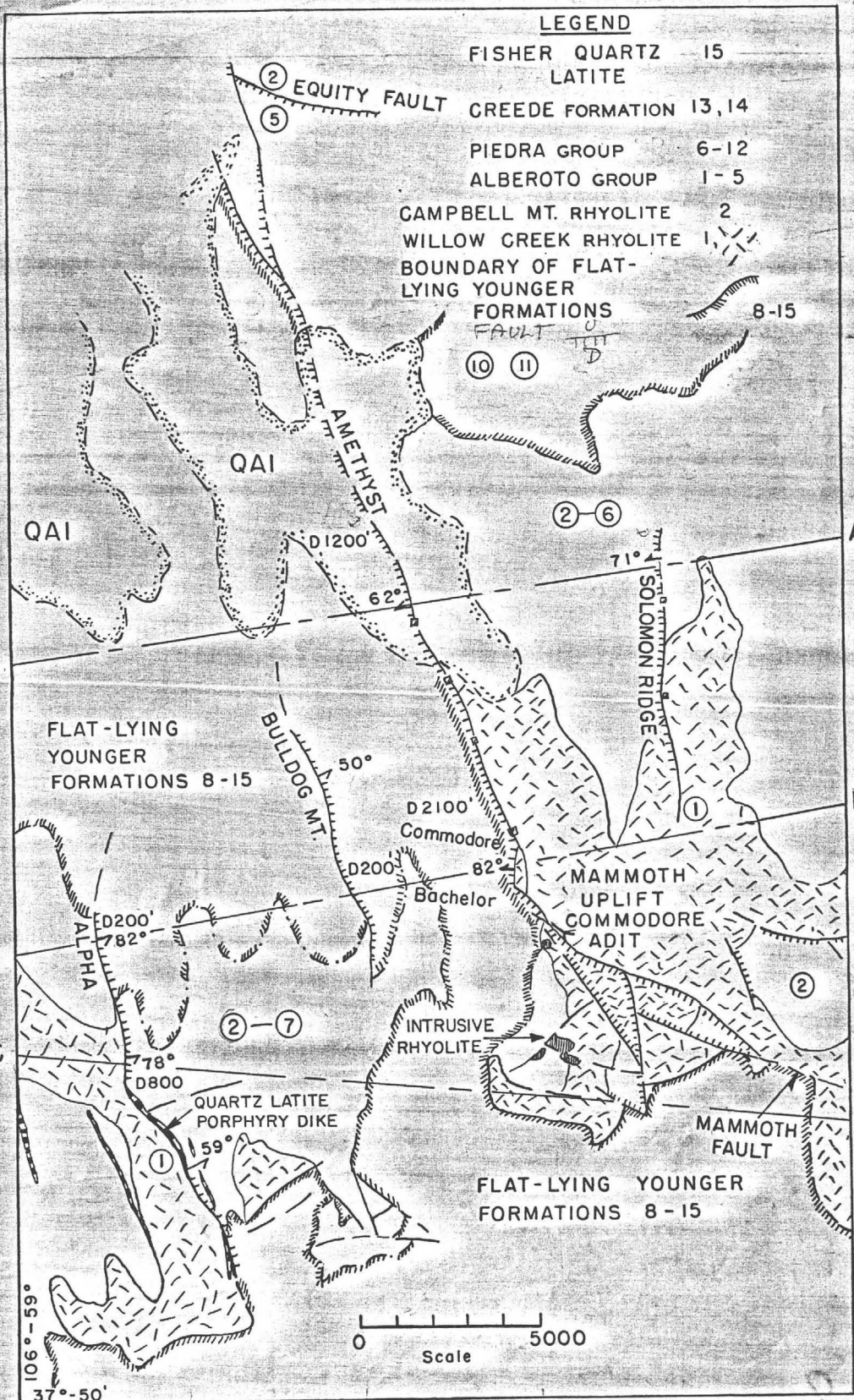


106°-59'
37°-50'

0 Scale 5000

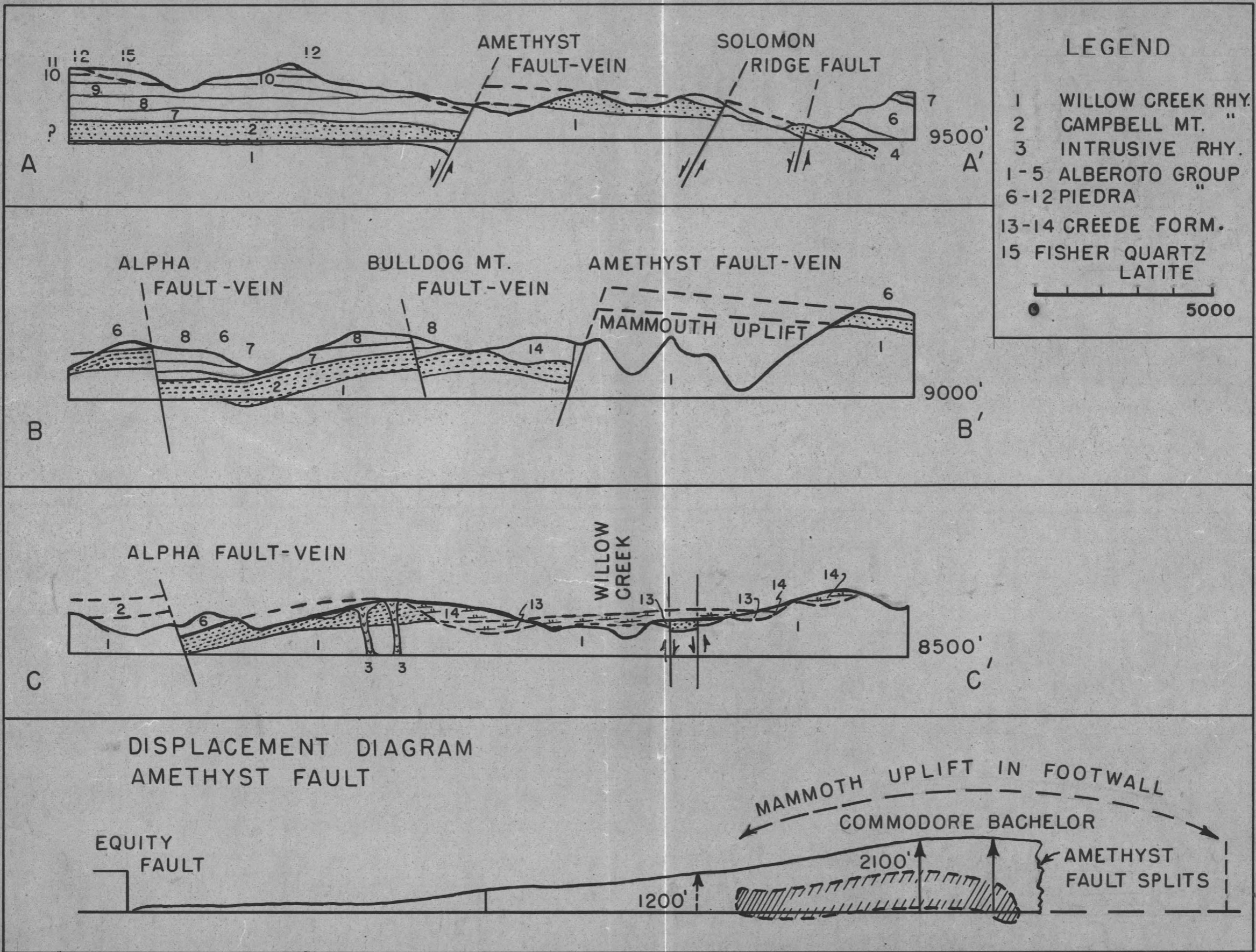
28.5

Geon page facing FIG. 20 Reduc 50 5000 = 1/2



Geological map facing FIG. 20 Reduce to 5000' = 1" 28.5

Wasser



Reduce 50
5000'
1/2"

28.5

Print on page facing
Fig. 20

FIG. 21-B