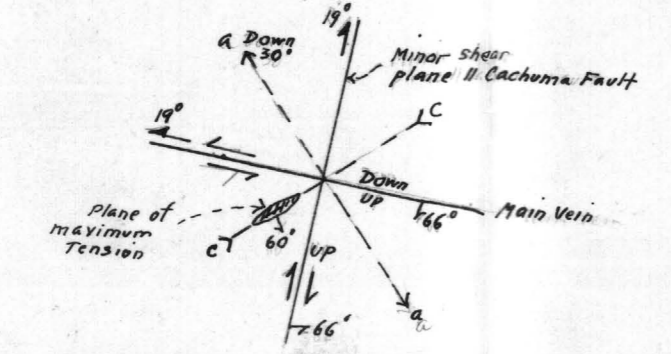
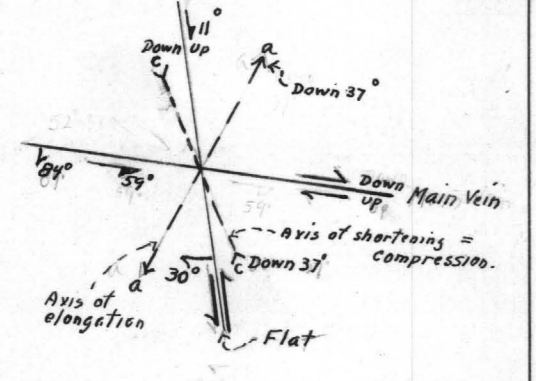


RED ROCK MINE  
 SANTA BARBARA CO., CALIF  
 GEOLOGIC PLAN OF 6 LEVEL  
 Scale: 1" = 30'  
 For legend see plan of 5 Lev.



a. Early deformation connected with folding. Formation of N-S faults + NE Flats.

b. Later deformation associated with Cachuma reverse fault + with big mineralization. Movement of blocks up dip of Flats + up 1/2 N on Main Vein took place at this time.

STRESS DIAGRAMS.

900S

750S

600S

450S

300S

150S

00

150E

300E





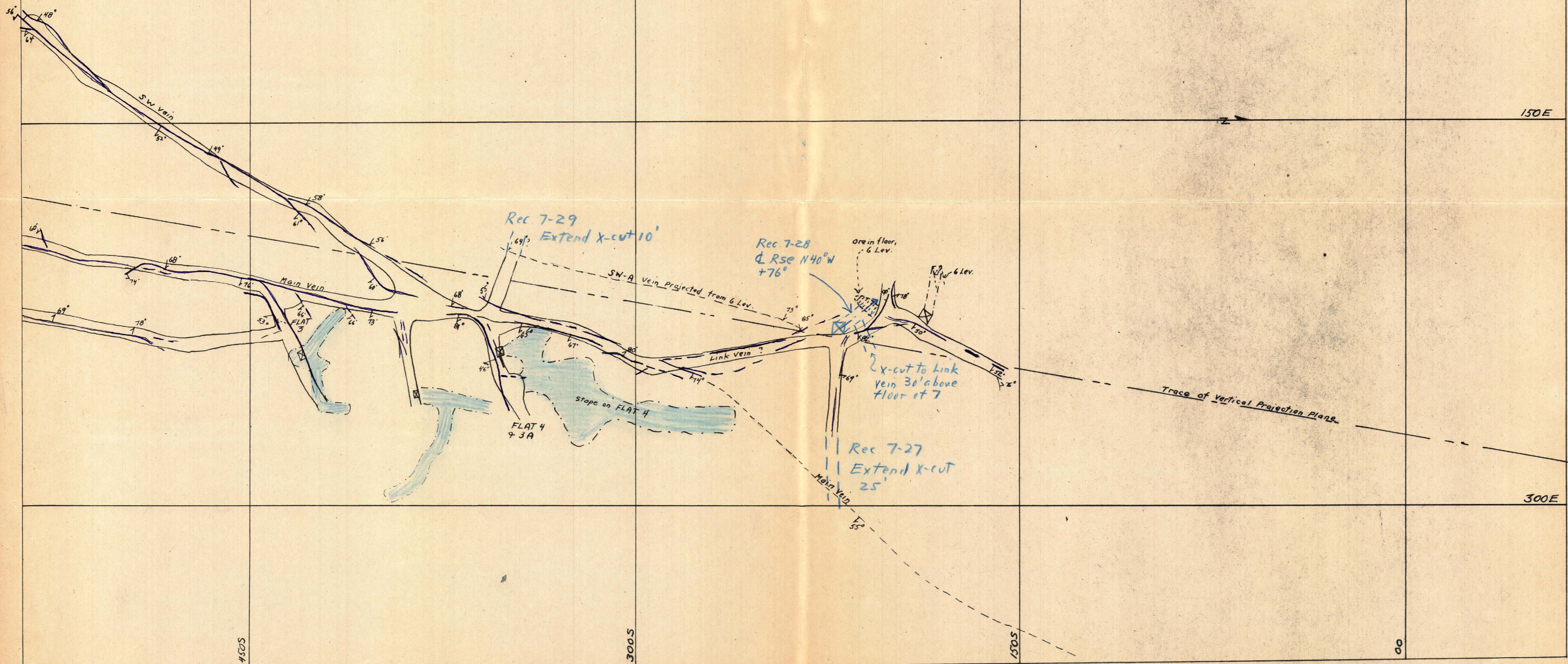


6 Level





CACHUMA MINING COMPANY  
 RED ROCK MINE  
 GEOLOGIC PLAN, NORTH END 7 LEVEL  
 Scale: 1"=30'  
 JUNE 16, 1943



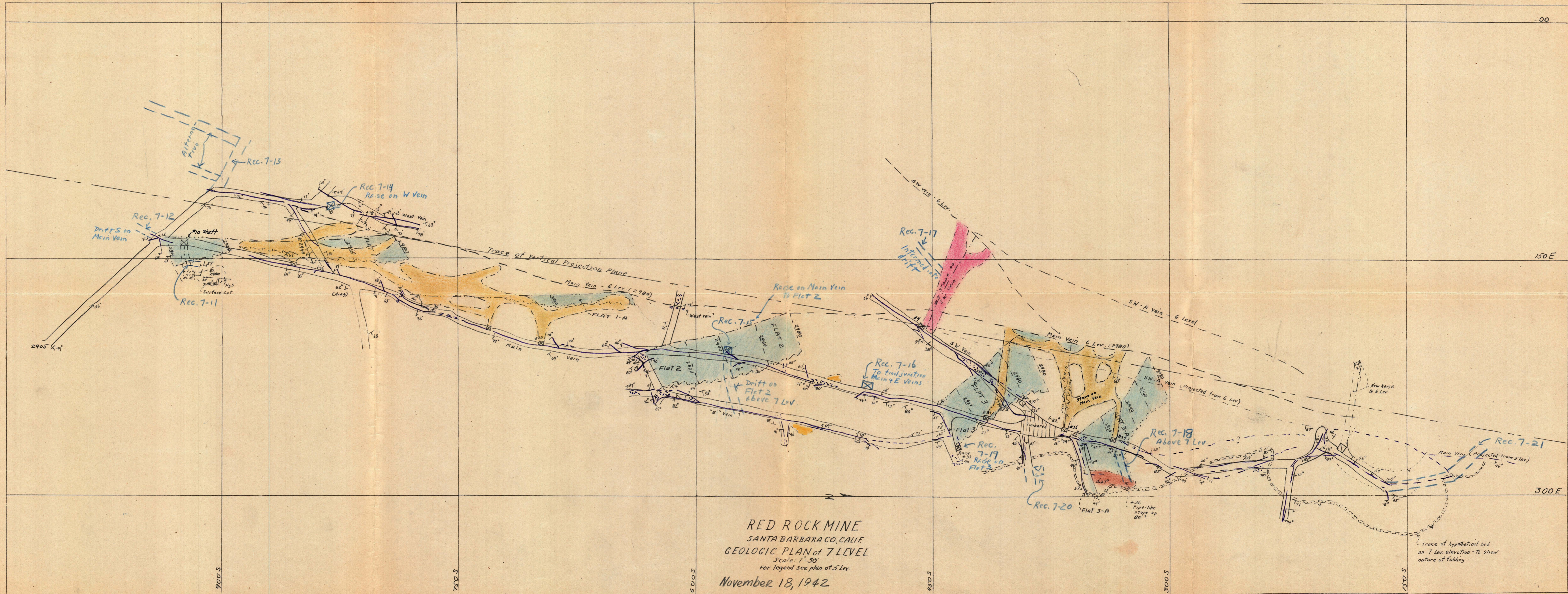


7 Level

7/16/73



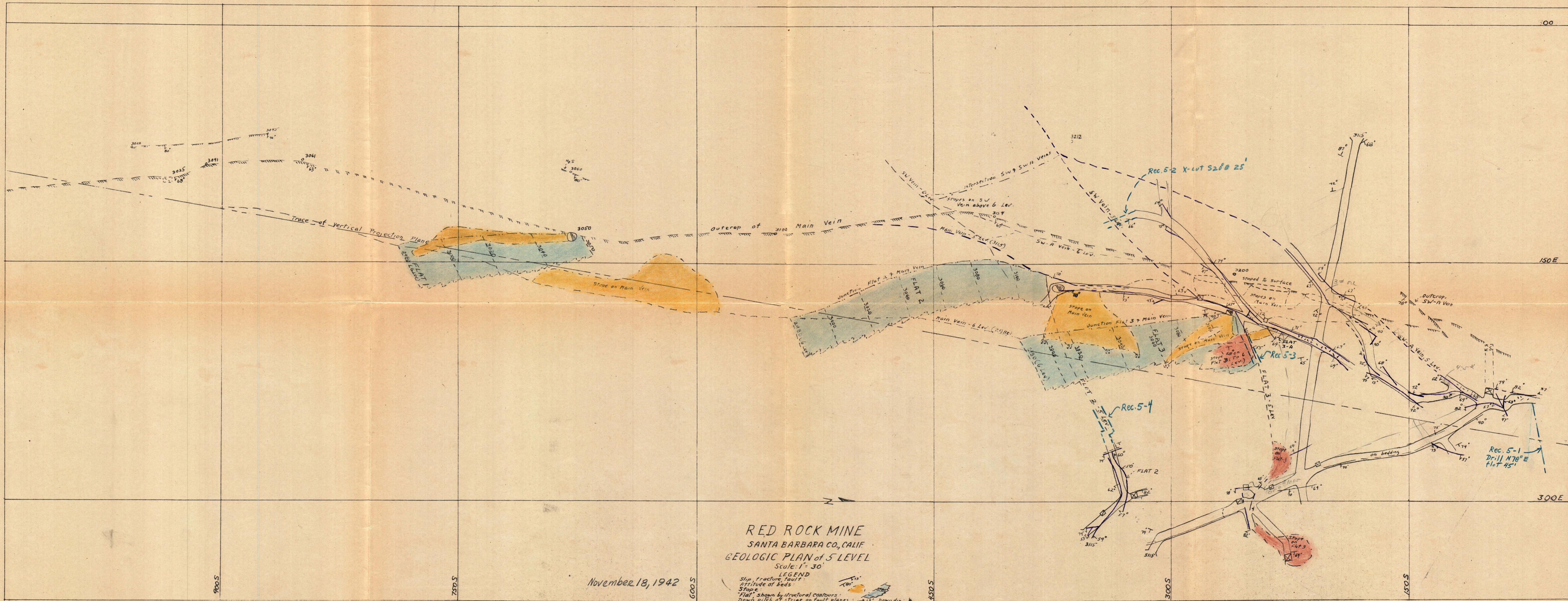




RED ROCK MINE  
 SANTA BARBARA CO., CALIF.  
 GEOLOGIC PLAN of 7 LEVEL  
 Scale: 1"=30'  
 For legend see plan of 5 Lev.  
 November 18, 1942

Trace of hypothetical bed  
 on 7 level elevation - to show  
 nature of folding.





RED ROCK MINE  
 SANTA BARBARA CO., CALIF.  
 GEOLOGIC PLAN of 5 LEVEL  
 Scale: 1" = 30'

November 18, 1942

LEGEND  
 Slip, fracture, fault:  
 Attitude of beds:  
 Slope:  
 "Flat" shown by structural contours:  
 Down pitch of strike on fault planes: 15° Down dip

900S

750S

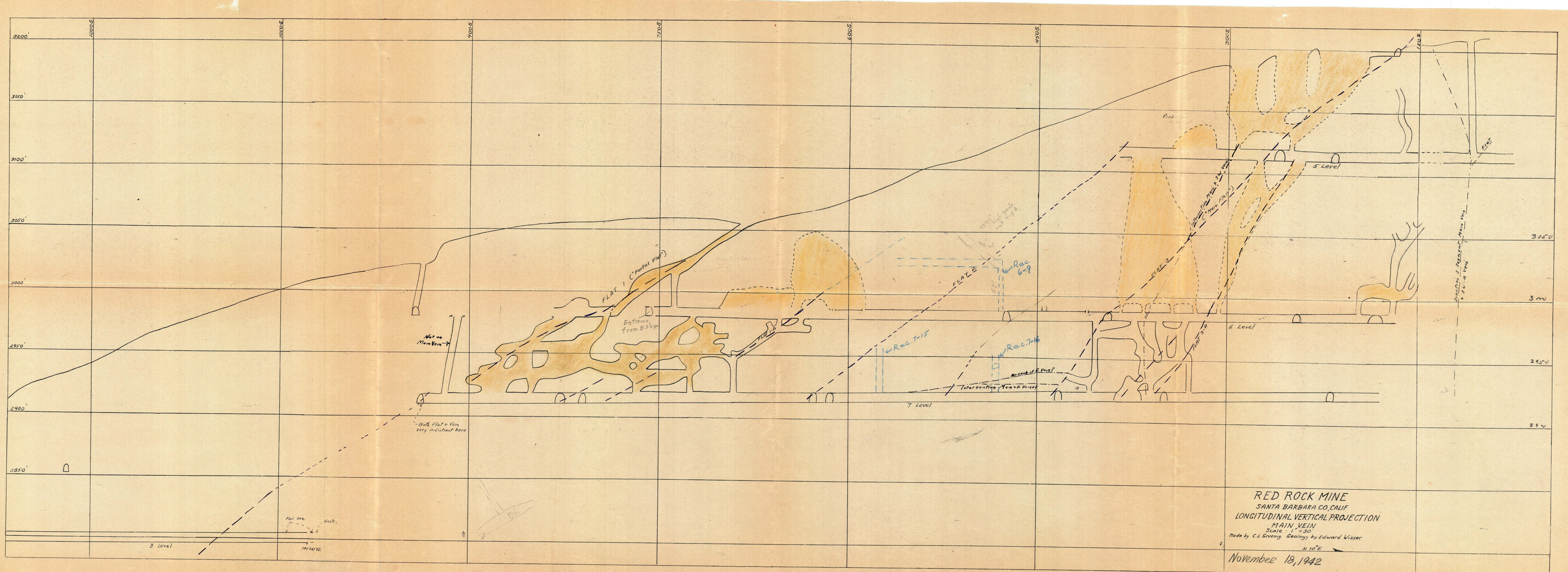
600S

450S

300E

150E

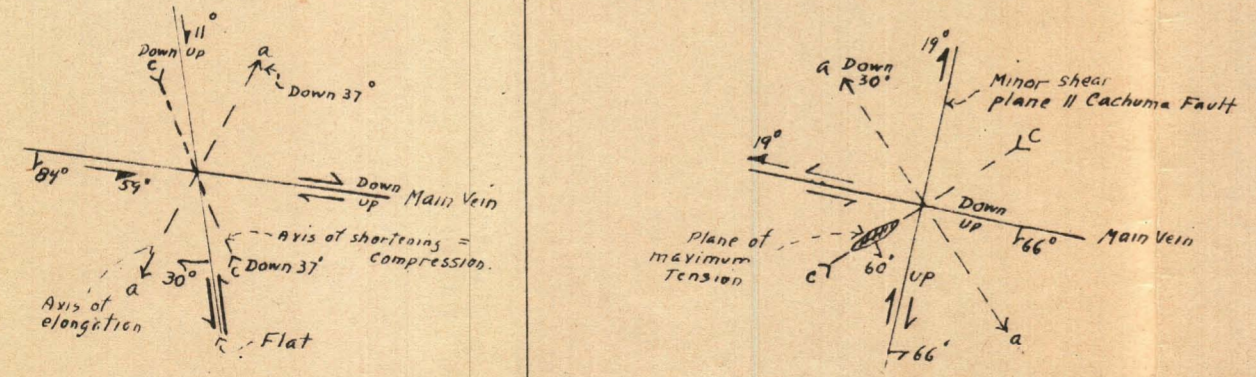
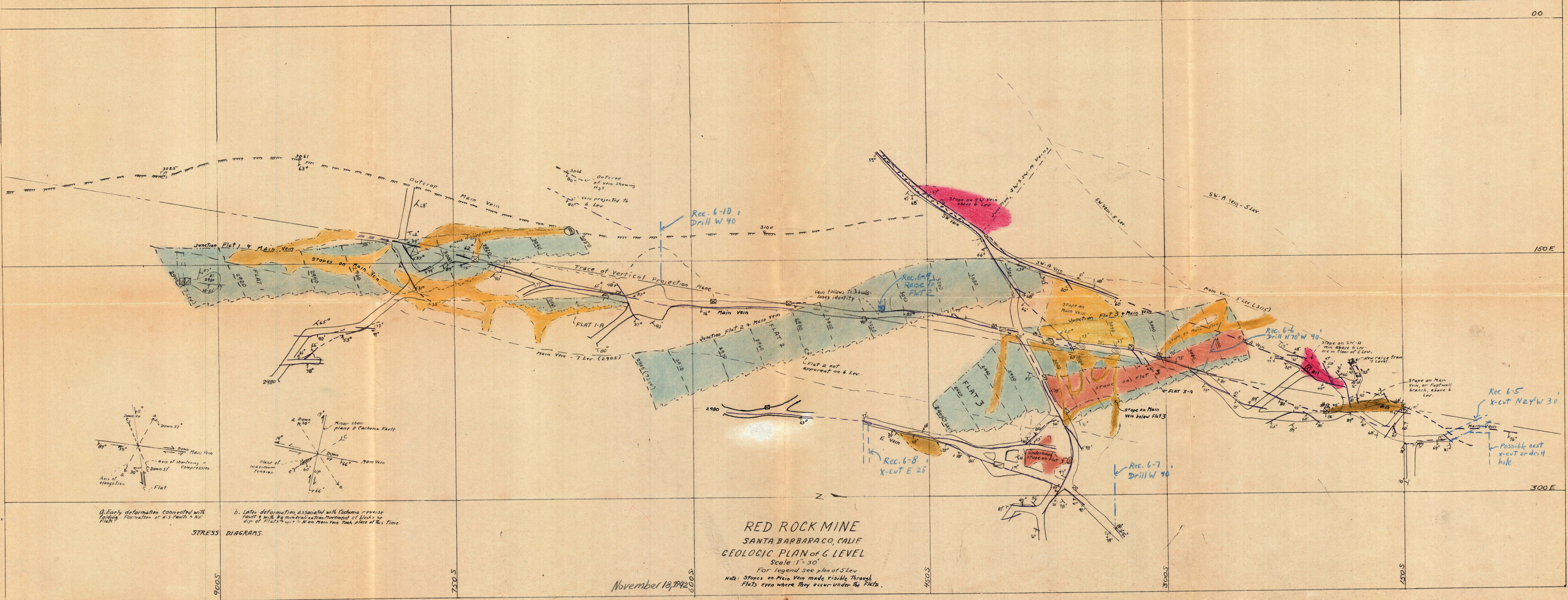
Geologic Plan of 5 Lev.  
1"=30'



RED ROCK MINE  
 SANTA BARBARA CO., CALIF.  
 LONGITUDINAL VERTICAL PROJECTION  
 MAIN VEIN  
 Scale: 1" = 30'  
 Made by C.L. Gruening, Geology by Edward Visser.  
 N 10° E  
 November 18, 1942







**STRESS DIAGRAMS.**  
 a. Early deformation connected with folding. Formation of N-S faults & NE dip of flats & up to N on Main Vein took place at this time.  
 b. Later deformation associated with Cachuma reverse fault & with the mineralization. Movement of blocks up dip of flats & up to N on Main Vein took place at this time.

**RED ROCK MINE**  
 SANTA BARBARA CO., CALIF.  
 GEOLOGIC PLAN of 6 LEVEL  
 Scale 1"=30'  
 For legend see plan of 5 Lev.  
 Note: Stopes on Main Vein made visible through flats even where they occur under the flats.

November 18, 1942