



CONTACT INFORMATION
Mining Records Curator
Arizona Geological Survey
3550 N. Central Ave, 2nd floor
Phoenix, AZ, 85012
602-771-1601
<http://www.azgs.az.gov>
inquiries@azgs.az.gov

The following file is part of the Grover Heinrichs Mining Collection

ACCESS STATEMENT

These digitized collections are accessible for purposes of education and research. We have indicated what we know about copyright and rights of privacy, publicity, or trademark. Due to the nature of archival collections, we are not always able to identify this information. We are eager to hear from any rights owners, so that we may obtain accurate information. Upon request, we will remove material from public view while we address a rights issue.

CONSTRAINTS STATEMENT

The Arizona Geological Survey does not claim to control all rights for all materials in its collection. These rights include, but are not limited to: copyright, privacy rights, and cultural protection rights. The User hereby assumes all responsibility for obtaining any rights to use the material in excess of "fair use."

The Survey makes no intellectual property claims to the products created by individual authors in the manuscript collections, except when the author deeded those rights to the Survey or when those authors were employed by the State of Arizona and created intellectual products as a function of their official duties. The Survey does maintain property rights to the physical and digital representations of the works.

QUALITY STATEMENT

The Arizona Geological Survey is not responsible for the accuracy of the records, information, or opinions that may be contained in the files. The Survey collects, catalogs, and archives data on mineral properties regardless of its views of the veracity or accuracy of those data.

SAFFORD PROJECT

PROPERTY AND EXPLORATION
SUMMARY PREPARED FOR
CHEVRON OIL COMPANY

June 12, 1975

C. H.

ESSE

SAFFORD PROJECT

Monthly Report - November 1971

Drill Hole ES-1 was terminated at 3281 feet in andesite porphyry containing predominant biotite-chlorite alteration and sulfide mineralization in the form of pyrite and chalcopyrite with minor bornite. Biotite was first noted at approximately 1970 feet. The first sulfides occurred at 2676 feet and oxidation ceased at approximately 2750 feet.

Sulfide occurrences were mostly restricted to veinlets and fractures, particularly at depth. A sharp increase in the chalcopyrite to pyrite ratio was noted at 3018 feet. Many veinlets carried good chalcopyrite but due to their low frequency of occurrence the total copper content, as well as total sulfide content, was low. Complete assay reports are not yet available.

Drill Hole ES-2 should be collared by the first of the week beginning December 6.

Geologic mapping is in progress along the northern boundary of Essex' property and the adjacent property of Phelps-Dodge and Producers Mineral Corp.

SXM

NOV 5 1973

RECEIVED

Safford Project

Monthly Report - October 1973

Compilation of drill hole and assay data from the San Juan continued. Some very tentative ore reserves will be calculated as information becomes available. A drilling program is being prepared to 1) extend oxide ore reserves, 2) test for new oxide ore, 3) explore for sulfides. This program can be implemented immediately upon PMC being removed from the property.

The Kim Again 4 claim was validated on October 9. The encounter with P-D personnel was described in a memo.

No Essey employees have visited the San Juan property since October 8 in compliance with a request from Judge Mahoney. There is good evidence PMC intends to start crushing again. Other property owners are welcome to visit the mine anytime.

Strong drilling activity continues east of Safford. The enclosed sketch map indicates approximate location of various drills. Ted Faulkner showed me some core from 1500 feet in his first hole. The rock was andesite agglomerate displaying moderate chlorite alteration.

and weak disseminated pyrite. They also sketch a geologic section of the drill hole based on rotary cuttings with minor amounts of core. The section is reproduced in my diary but their interpretation poses many questions, some of which may be answered by their second hole which they have just collared. Mike Riebold is supplying drilling money.

A program of relocating all the Bohemia, Nail Keg, Melody, etc. claims was initiated on October 29. Leo claims will be located to cover fractions ~~of~~ ~~the~~ ~~claims~~

MORENCI
X

TO CLIFTON

TO DUNCAN

EXION

RIEBOLD

AMBY
PD

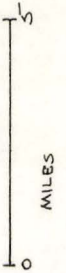
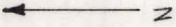
INSPIRATION
X

KCC
X

SAN JUAN
X

PD
X

SAFFORD



a v o

TO	Howard Lanier	LOCATION	Ft. Wayne, Ind.
FROM	Paul I. Eimon	LOCATION	Tucson, Ariz.
SUBJ.	Exploration & Mines Development Dept. Report May 1973	DATE	June 4, 1973

C
O
P
Y
T
OSummary

During May 1973 the Tucson office concentrated on the geological and legal aspects of the Safford project. All available data on the optioned claims and the San Juan Mine was organized and correlated in order to evaluate Essex' position and provide necessary background for decisions on future action. Results of this work are included and attached to this report and will be reviewed further in mid-June.

Lyall Lichty partially completed a metallurgical engineering study of the San Juan Mine at Safford, Arizona based on assumed reserved figures. This report will be completed the second week of June.

Additional activity included continued field investigations and negotiations for an option of the Hassayampa properties near Prescott, Arizona; completion of the assessment work on the optioned claim holdings at Morenci; definition of an exploration target in Southeastern California; discussions with two representatives of Mineroperu who came to Tucson the first week of May to arrange for feasibility studies at Cerro Verde, Peru; continued data accumulation and analysis for possible corporate acquisition considerations; and completion of a general review of the status of the Essex exploration program.

Milford geologic work during May included logging of the Anaconda Valley core, drilling of the Intermountain ground, mapping and surveying.

Safford Project No. A021P8-771

Optioned Claims

A brief report by J.K. Jones is attached summarizing results of Essex' exploration in the northwest portion of the optioned claim group adjacent to Tract 37. A more detailed geologic report including maps and cross sections is nearly complete and will be available for the discussions scheduled in June.

Surveying of the unpatented mining claims in the northwest part of the optioned claim group continued during the month.

Safford Project No. A021P8-771

Optioned Claims - continued

Phelps-Dodge has denied allegations made by the defendants, Essex and the State of Arizona, with respect to Section 32. John Lacy, attorney acting for Essex, anticipates filing a motion for dismissal because of failure of Phelps=Dodge to include the United States as a party to the suit.

Phelps-Dodge has submitted a motion to survey Essex' drill hole ES-9 and 20 near the boundary of Tract 37. In exchange Essex has retained a licensed Mineral Surveyor to survey and establish the south boundary of Tract 37.

San Juan Mine

Geologic data gathered from logging of much of the San Juan drill core has been posted to newly created maps and cross sections, and assaying of selected drill core samples has been completed. Analysis of this information indicates that reports of an ore reserve of 15 million tons at 0.52% copper may be reasonable. However, much more information must be obtained to confirm this ore reserve.

On April 30 and May 25 hearings were held at Florence, Arizona, before Judge Mahoney, concerning the motion for summary judgment on 1) Guy Anderson et al vs Producers Minerals Corp. to terminate the mining lease, and 2) Essex International, Inc., vs Producers Minerals Corp. to discuss the counter-claim. The judge denied the motions in both cases and agreed that the cases should come to trial. Pre-trial hearing will be held about September 15 and the jury trial will start on about October 1, 1973. The lawyers estimate that the trial will last approximately three weeks.

Lyall Lichty has assumed responsibility for overseeing legal aspects of the legal action involving the San Juan Mine.

Exploration Considerations

Hassayampa Property, Yavapai County, Arizona - Field work was continued and negotiations started to determine if a reasonable option can be obtained. Drill holes by other companies have cut scattered zones of 0.4% to 0.5% copper mineralization at a shallow depth, but have not adequately determined the extent of this mineralization. The possibility that one or more shallow, low-grade chalcocite orebodies of sufficient size to support a medium-sized open pit mine could be

Exploration Considerations

Hassayampa Property - continued

developed seems good enough to justify additional investigation.

Copper Basin and Adjacent Areas, San Bernardino County, California -

Analysis of Earth Satellite Resource photography recently obtained has indicated anomalous features related both to previous Essex exploration target ideas and to recent copper discoveries in this area that warrants follow-up field investigation by Essex personnel. This will be done in late June or July when proper arrangements are made to contend with the isolated desert conditions.

Peru - Mr. Brian Wolfe and Javier Diaz of Minero-Peru visited Tucson during May to interview engineering firms for feasibility studies of the sulfide potential at Cerro Verde, Peru. Minero-Peru is anxious to move the development of Cerro Verde ahead quite rapidly but is having serious management and planning problems. Reports from Canada indicate difficulties with the Wright Engineers contract. Continued low key Essex interest in this development is recommended.

Morenci Project A015P4-1070

Assessment work has been completed and an affidavit filed with the State of Arizona on Lease M-438. Also the rent for the period of June 1, 1973 through May 31, 1974 has been paid.

Assessment work on Els-Beth 1-6 has also been completed and affidavits are now being prepared for filing prior to the Sept. 1, 1973 deadline.

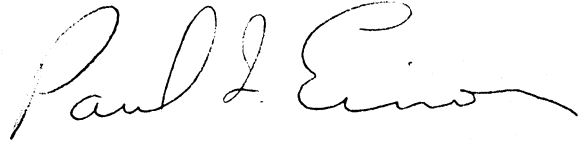
The expenditures to complete the work on the Morenci properties was approximately double the normal cost because Phelps-Dodge denied access by road to Area 1 and flood water prevented road access to Area 2. The only alternative within the limited time available was helicopter transport of men and equipment to the property.

Milford Project U001P9-1171

Drill hole E1M-1 was collared on claims optioned from Intermountain Exploration Company about one-half mile east of the OK Mine and advanced to a depth of 645 feet. This hole will be continued to a depth of about 750 feet and several additional shallower holes will be drilled to satisfy contract commitments. Traces of bornite and chalcopyrite are being encountered, but assays contain only about 0.1% copper. Logging of the Anaconda core from the Valley area was continued, and mapping and surveying were undertaken in the OK and Maria pits.

Evaluation Review

A review of the Essex exploration program during May has generated the attached program outline for discussion.

A handwritten signature in cursive script that reads "Paul I. Eimon". The signature is written in dark ink and is positioned to the right of the typed name.

Paul I. Eimon

PIE:td
June 4, 1973

Attachments (3)

Monthly Report
Safford Project
June 1973

Work continued on the Safford report and logging of the San Juan core. Surveillance of the San Juan property resumed on June 14 after a thirty day lapse. Preliminary plans for assessment work were discussed and necessary action taken.

Bob Helming

Planning preparator to

~~one outside~~

Cuttings of block 2 west prospect
examined

Negotiations with KCC for assessment
work and event aerial photography

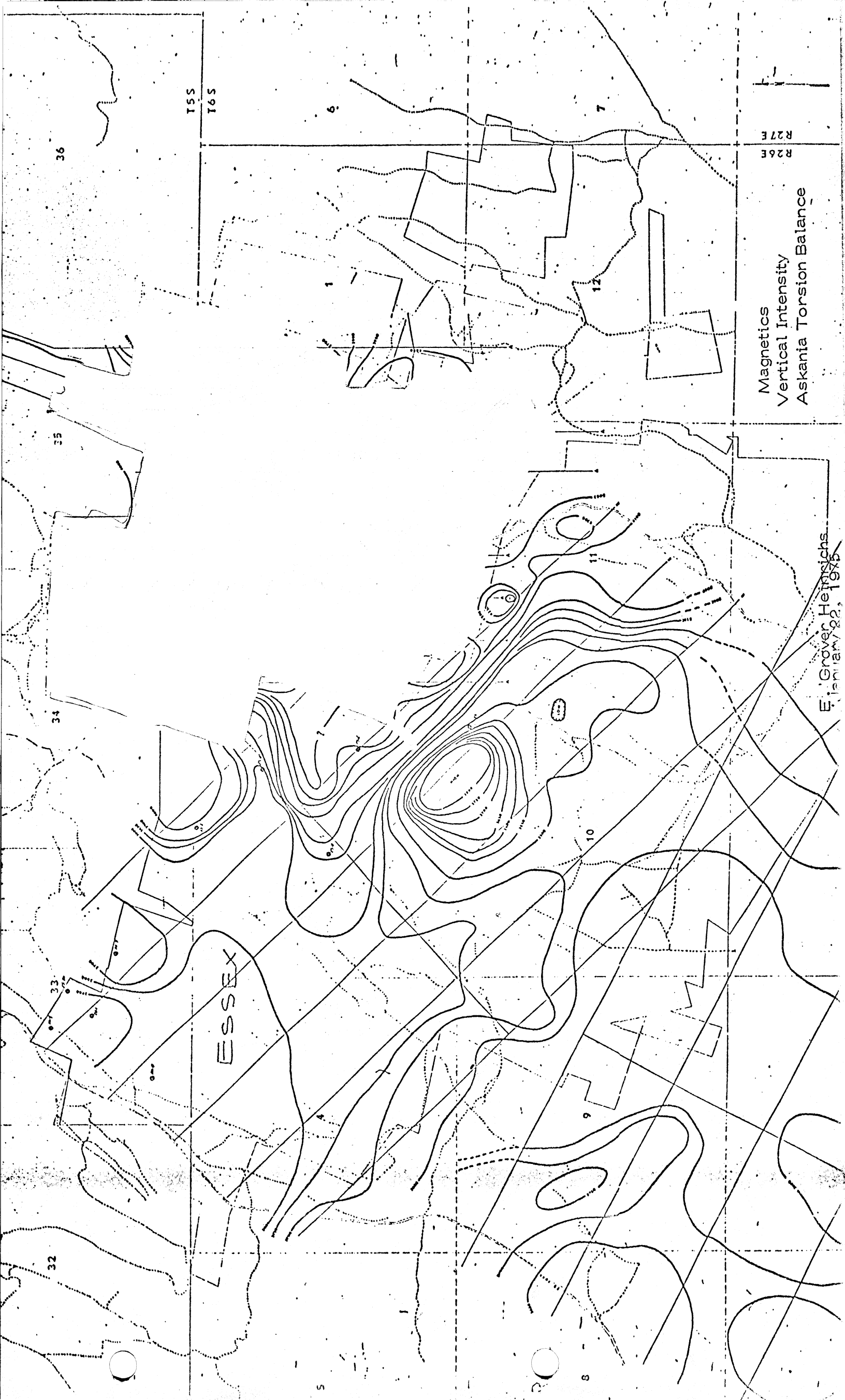
P.D. Surveys of tract 37 continued

SAFFORD PROJECT

PROPERTY AND EXPLORATION SUMMARY
PREPARED FOR

CHEVRON OIL COMPANY

June 12, 1975



Magnetics
Vertical Intensity
Askania Torsion Balance

E. Grover Heimlich
January 22, 1975

T55
T65

R26E
R27E

ESSEX

36

35

34

33

32

6

7

12

10

9

8

1

11

4

5

P.D.

36

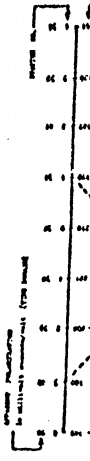
Resistivity in Ohm Meters

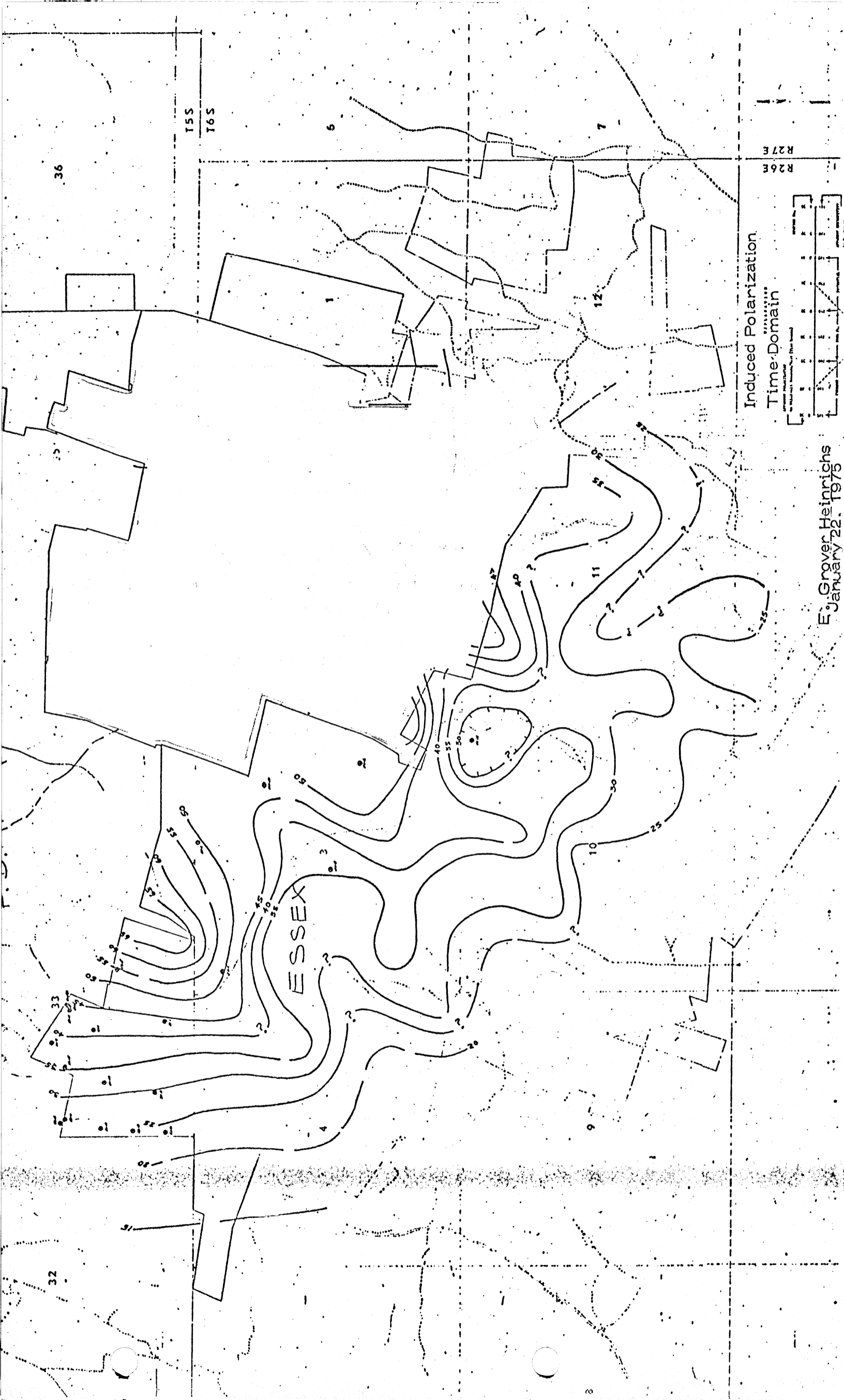
T55
T65



E. Grover Heinrichs
January 22, 1975

R27E
R26E

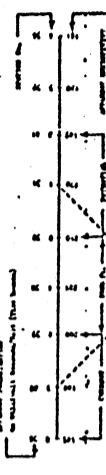




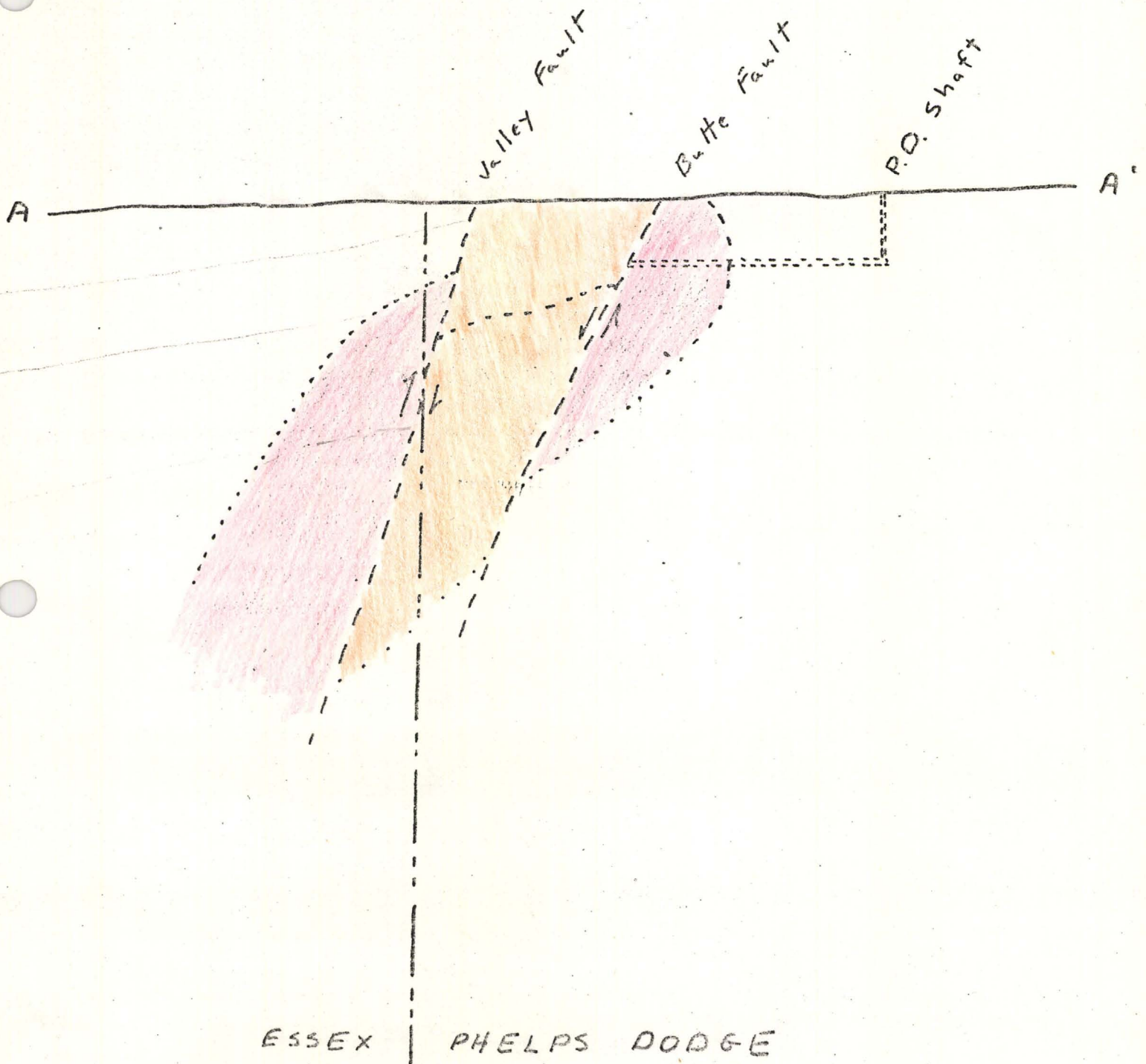
R27E
R26E

Induced Polarization

Time Domain



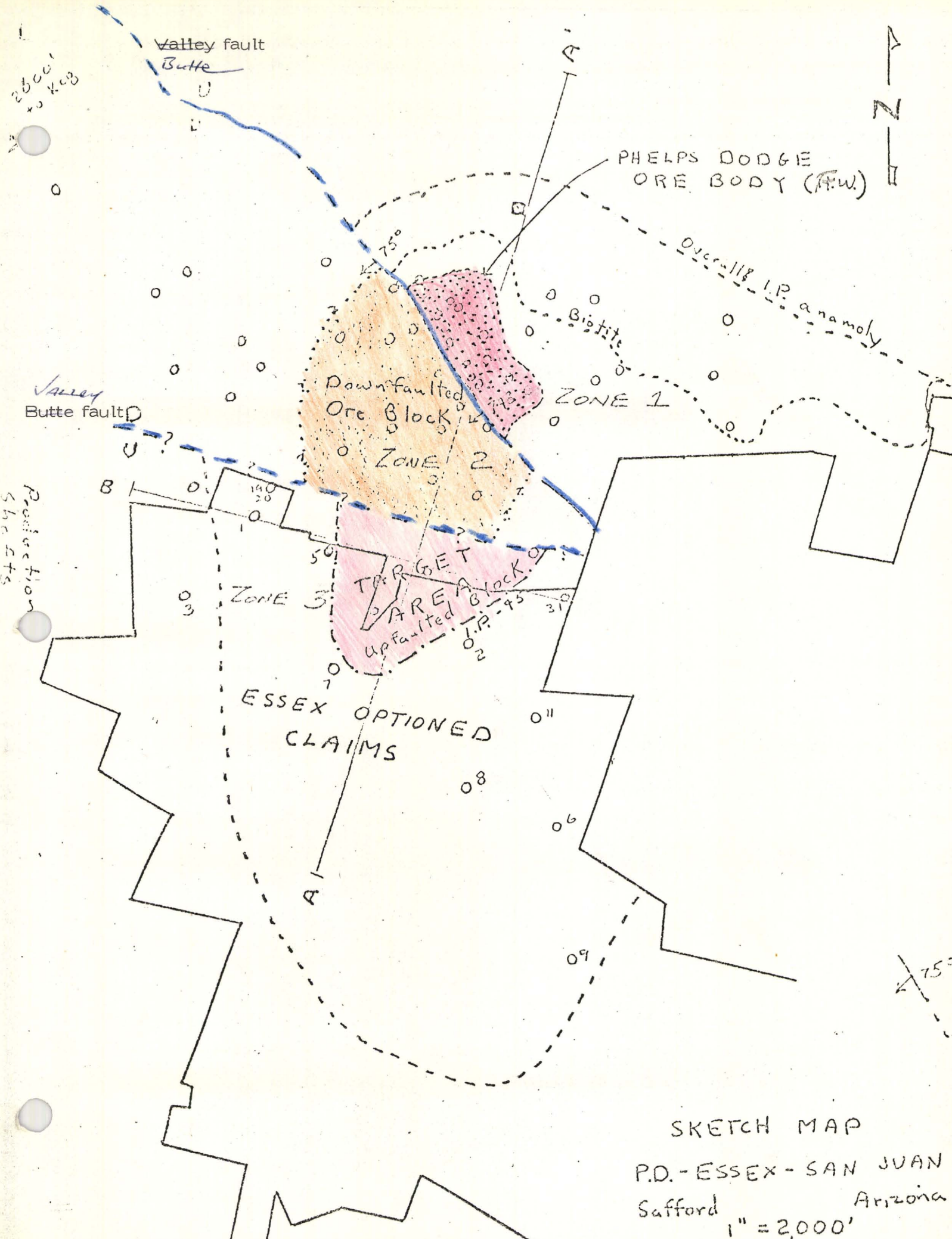
E. Grover Heinrichs
January 22, 1973



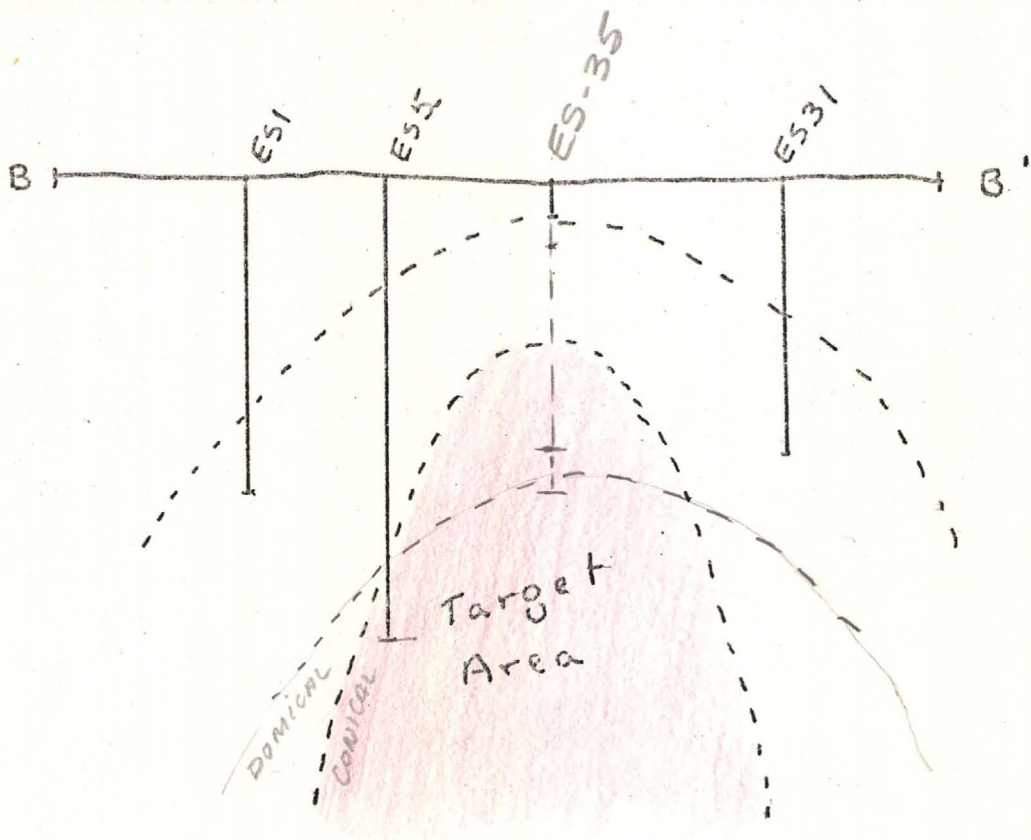
SKETCH SECTION
A - A'

P. Eimion

Jan. 19, 1975



SKETCH MAP
 P.D. - ESSEX - SAN JUAN
 Safford Arizona
 1" = 2,000'



Scale
1" = 2,000'

SKETCH SECTION
B - B'

P. Eimon Jan 20, 1975