



CONTACT INFORMATION
Mining Records Curator
Arizona Geological Survey
3550 N. Central Ave, 2nd floor
Phoenix, AZ, 85012
602-771-1601
<http://www.azgs.az.gov>
inquiries@azgs.az.gov

The following file is part of the Grover Heinrichs Mining Collection

ACCESS STATEMENT

These digitized collections are accessible for purposes of education and research. We have indicated what we know about copyright and rights of privacy, publicity, or trademark. Due to the nature of archival collections, we are not always able to identify this information. We are eager to hear from any rights owners, so that we may obtain accurate information. Upon request, we will remove material from public view while we address a rights issue.

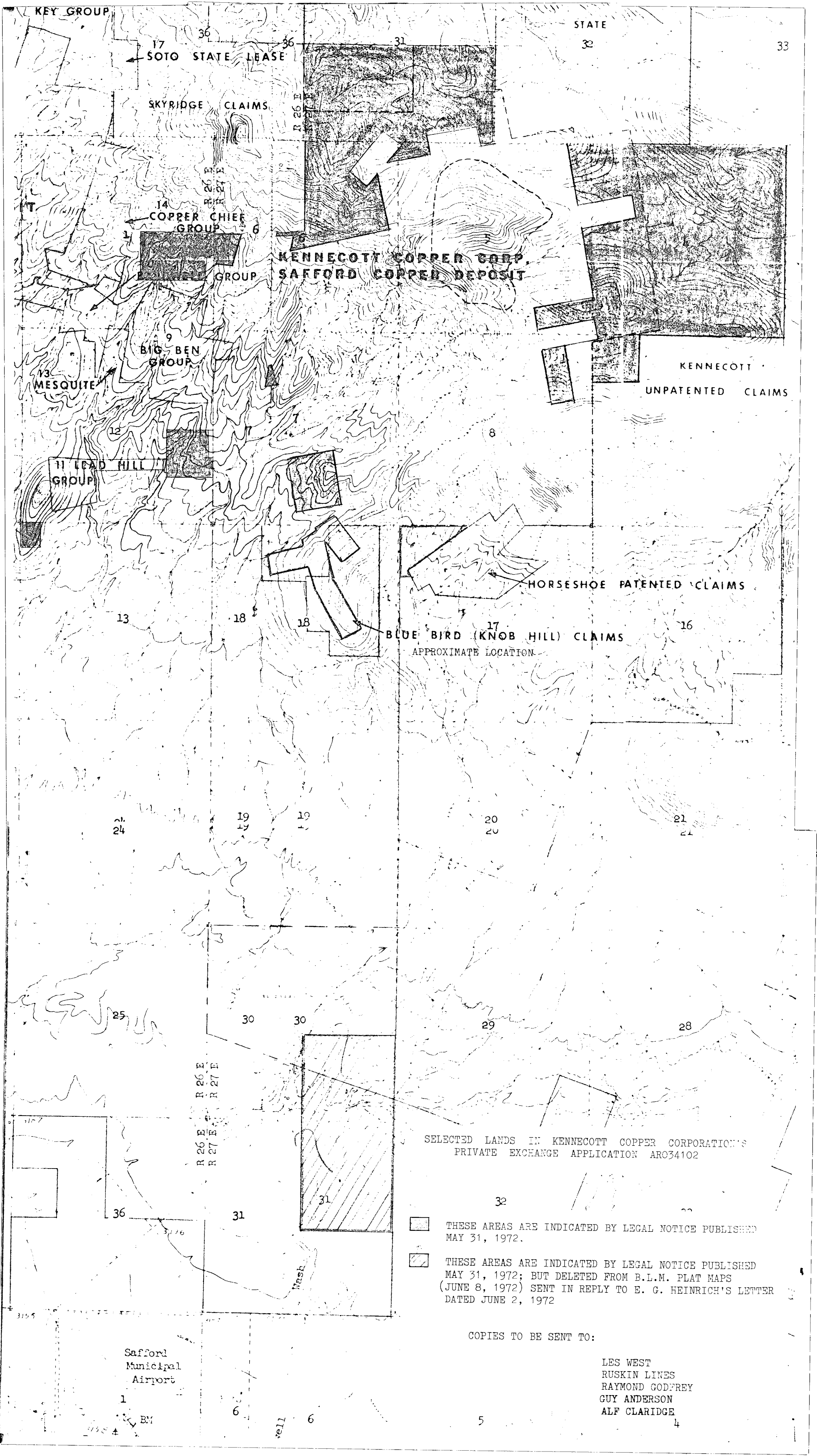
CONSTRAINTS STATEMENT

The Arizona Geological Survey does not claim to control all rights for all materials in its collection. These rights include, but are not limited to: copyright, privacy rights, and cultural protection rights. The User hereby assumes all responsibility for obtaining any rights to use the material in excess of "fair use."

The Survey makes no intellectual property claims to the products created by individual authors in the manuscript collections, except when the author deeded those rights to the Survey or when those authors were employed by the State of Arizona and created intellectual products as a function of their official duties. The Survey does maintain property rights to the physical and digital representations of the works.

QUALITY STATEMENT

The Arizona Geological Survey is not responsible for the accuracy of the records, information, or opinions that may be contained in the files. The Survey collects, catalogs, and archives data on mineral properties regardless of its views of the veracity or accuracy of those data.



KENNECOTT COPPER CORP.
SAFFORD COPPER DEPOSIT

KENNECOTT
UNPATENTED CLAIMS

HORSESHOE PATENTED CLAIMS

BLUE BIRD (KNOB HILL) CLAIMS
APPROXIMATE LOCATION

SELECTED LANDS IN KENNECOTT COPPER CORPORATION'S
PRIVATE EXCHANGE APPLICATION ARO34102

- THESE AREAS ARE INDICATED BY LEGAL NOTICE PUBLISHED MAY 31, 1972.
- THESE AREAS ARE INDICATED BY LEGAL NOTICE PUBLISHED MAY 31, 1972; BUT DELETED FROM B.L.M. PLAT MAPS (JUNE 8, 1972) SENT IN REPLY TO E. G. HEINRICH'S LETTER DATED JUNE 2, 1972

COPIES TO BE SENT TO:

LES WEST
RUSKIN LINES
RAYMOND GODFREY
GUY ANDERSON
ALF CLARIDGE

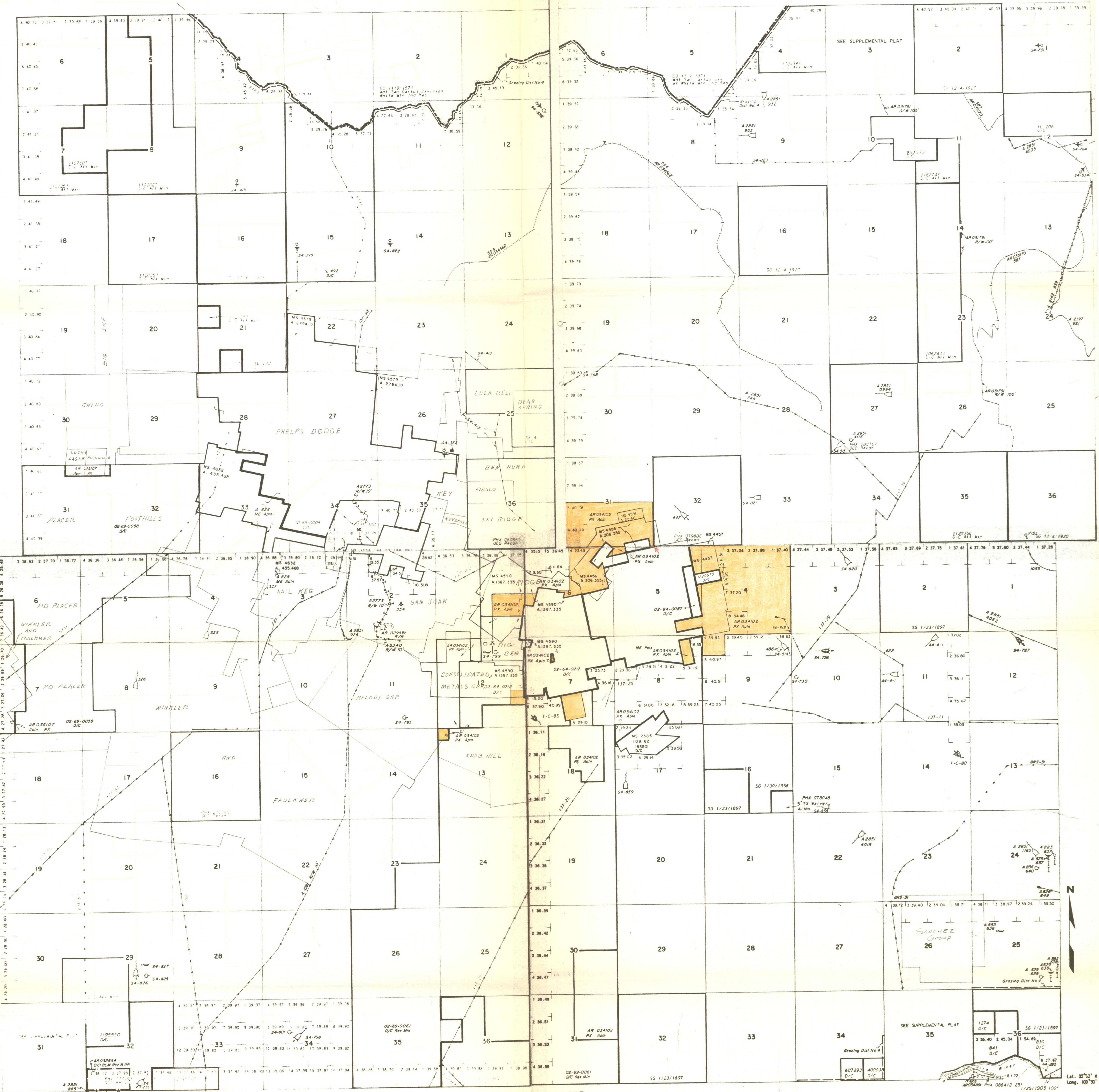
Safford
Municipal
Airport

1
BM

6
vell 6

5

4



R26E R27E

SCALE
 0 10 20 30 40
 30 chains to the inch

Reduced from Original
 to 2" = 1 mi.

SCALE
 0 10 20 30 40
 30 chains to the inch

ESSEX

ESSEX INTERNATIONAL, INC.
 1704 WEST GRANT RD., TUCSON, ARIZONA 85705
 PHONE (602) 624-7421

LAND STATUS 2/17/71

LONE STAR MINING DISTRICT
 SAFFORD, ARIZONA AREA

Information from Public Records
 M.J. Knier, Verbal Communications

- WINKLER AND FAULKNER
- PHELPS DODGE
- KENNECOTT
- INSPIRATION
- A. CLARIDGE et al
(May include West & Anderson etc.)
- MINERAL PRODUCERS CO.
(A. Claridge, Anderson & Scruggs et al)

Lat. 32°52' N
 Long. 109°30' W

