

CONTACT INFORMATION
Mining Records Curator
Arizona Geological Survey
3550 N. Central Ave, 2nd floor
Phoenix, AZ, 85012
602-771-1601
<http://www.azgs.az.gov>
inquiries@azgs.az.gov

The following file is part of the Grover Heinrichs Mining Collection

ACCESS STATEMENT

These digitized collections are accessible for purposes of education and research. We have indicated what we know about copyright and rights of privacy, publicity, or trademark. Due to the nature of archival collections, we are not always able to identify this information. We are eager to hear from any rights owners, so that we may obtain accurate information. Upon request, we will remove material from public view while we address a rights issue.

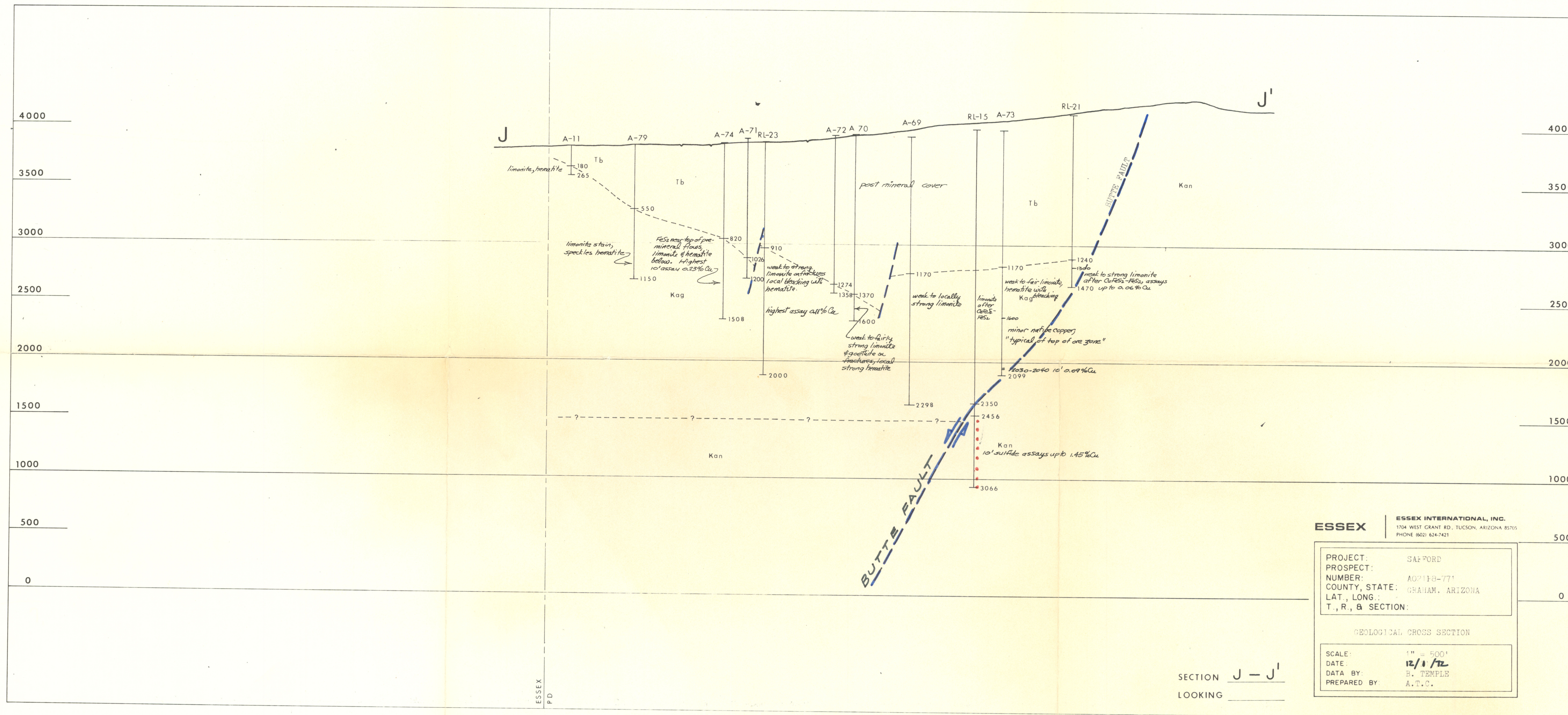
CONSTRAINTS STATEMENT

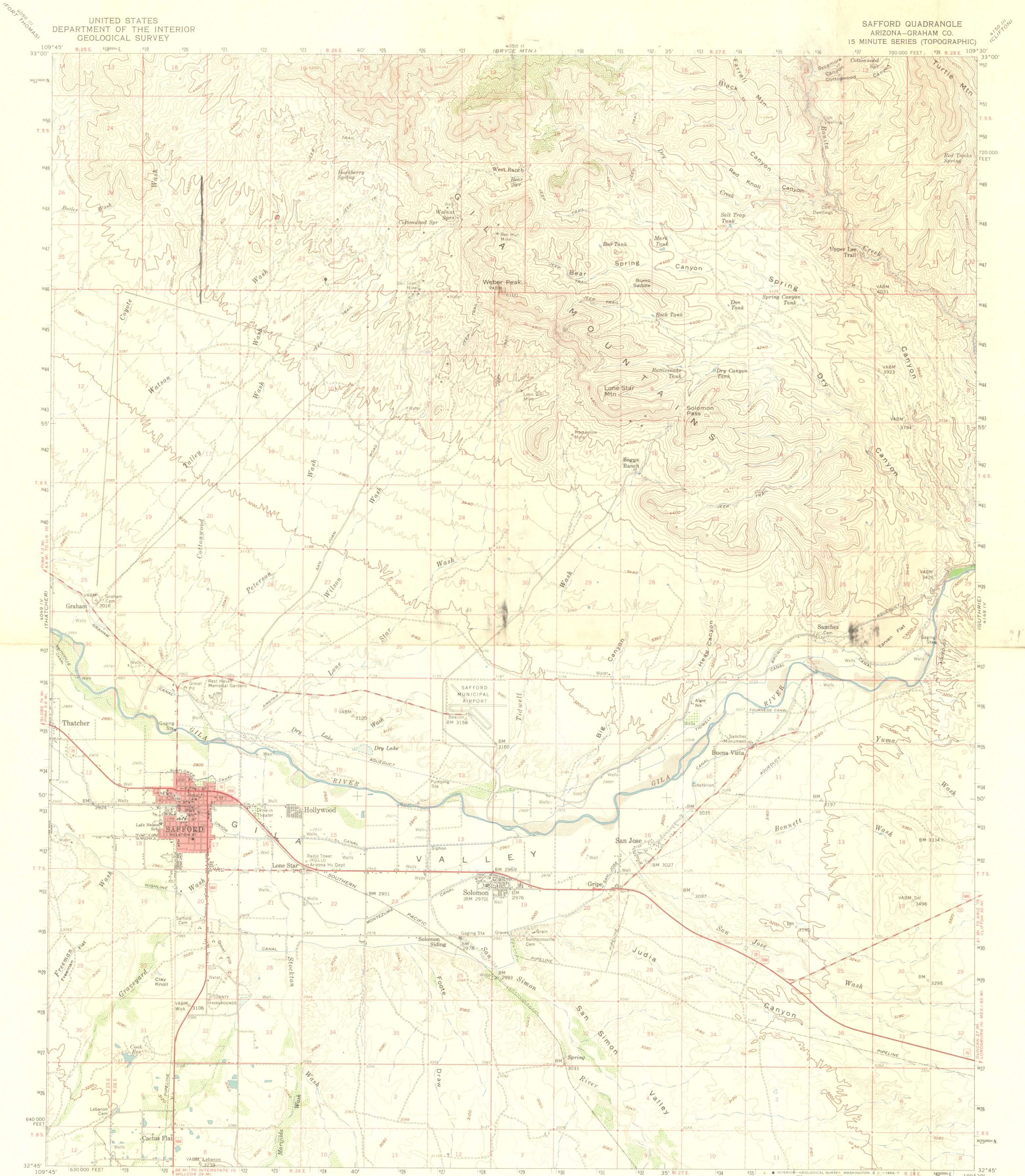
The Arizona Geological Survey does not claim to control all rights for all materials in its collection. These rights include, but are not limited to: copyright, privacy rights, and cultural protection rights. The User hereby assumes all responsibility for obtaining any rights to use the material in excess of "fair use."

The Survey makes no intellectual property claims to the products created by individual authors in the manuscript collections, except when the author deeded those rights to the Survey or when those authors were employed by the State of Arizona and created intellectual products as a function of their official duties. The Survey does maintain property rights to the physical and digital representations of the works.

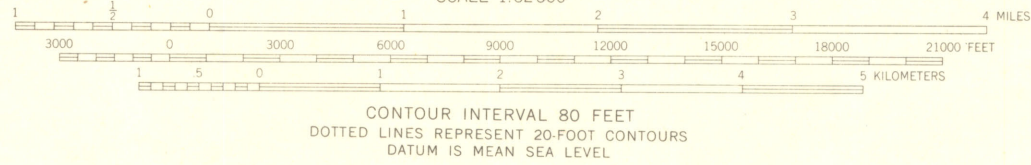
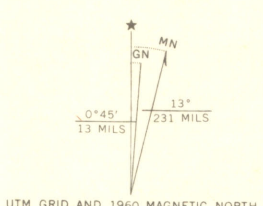
QUALITY STATEMENT

The Arizona Geological Survey is not responsible for the accuracy of the records, information, or opinions that may be contained in the files. The Survey collects, catalogs, and archives data on mineral properties regardless of its views of the veracity or accuracy of those data.





Mapped, edited, and published by the Geological Survey
Control by USGS and USC&GS
Topography from aerial photographs by photogrammetric methods
and by planetable surveys 1960. Aerial photographs taken 1957
Polyconic projection. 1927 North American datum
10,000-foot grid based on Arizona coordinate system, east zone
1000-meter Universal Transverse Mercator grid ticks,
zone 12, shown in blue
Red tint indicates area in which only
landmark buildings are shown
Where omitted, land lines have not been established



ROAD CLASSIFICATION
Heavy-duty ——— Light-duty ———
Medium-duty ——— Unimproved dirt ———
U.S. Route ———

SAFFORD, ARIZ.
N3245-W10930/15
1960
AMS 4049 I-SERIES V798

THIS MAP COMPLIES WITH NATIONAL MAP ACCURACY STANDARDS
FOR SALE BY U.S. GEOLOGICAL SURVEY, DENVER, COLORADO 80225, OR WASHINGTON, D.C. 20242
A FOLDER DESCRIBING TOPOGRAPHIC MAPS AND SYMBOLS IS AVAILABLE ON REQUEST

Essex should not explore the Scorpion claim. E. Grover Heinrichs assured

Bowen that the Kim 2 had been located on December 13, the same day as

Kim 1. Bowen was asked if a location on Kim 1 outside the barricade

would be acceptable as a drill site, and Bowen said, "Happy drilling."

The drill was then moved to a site outside the barricade determined to

be on mining claim Kim 1 and drilling was started. *A second front end loader arrived and parked with the other loader and bulldozer a few feet north of the opening made in the earthen barricade.*

JK Jones
Dec. 18, 1972

PHILIPS DODGE SURFACE - STATE MINERAL
RESTRICTED FROM MINERAL ENTRY.
(P.D. VERSES STATE OF ARIZONA.)

PHILIPS DODGE SURFACE - STATE MINERAL
(RESTRICTED FROM MINERAL ENTRY.
(P.D. VERSES STATE OF ARIZONA.)

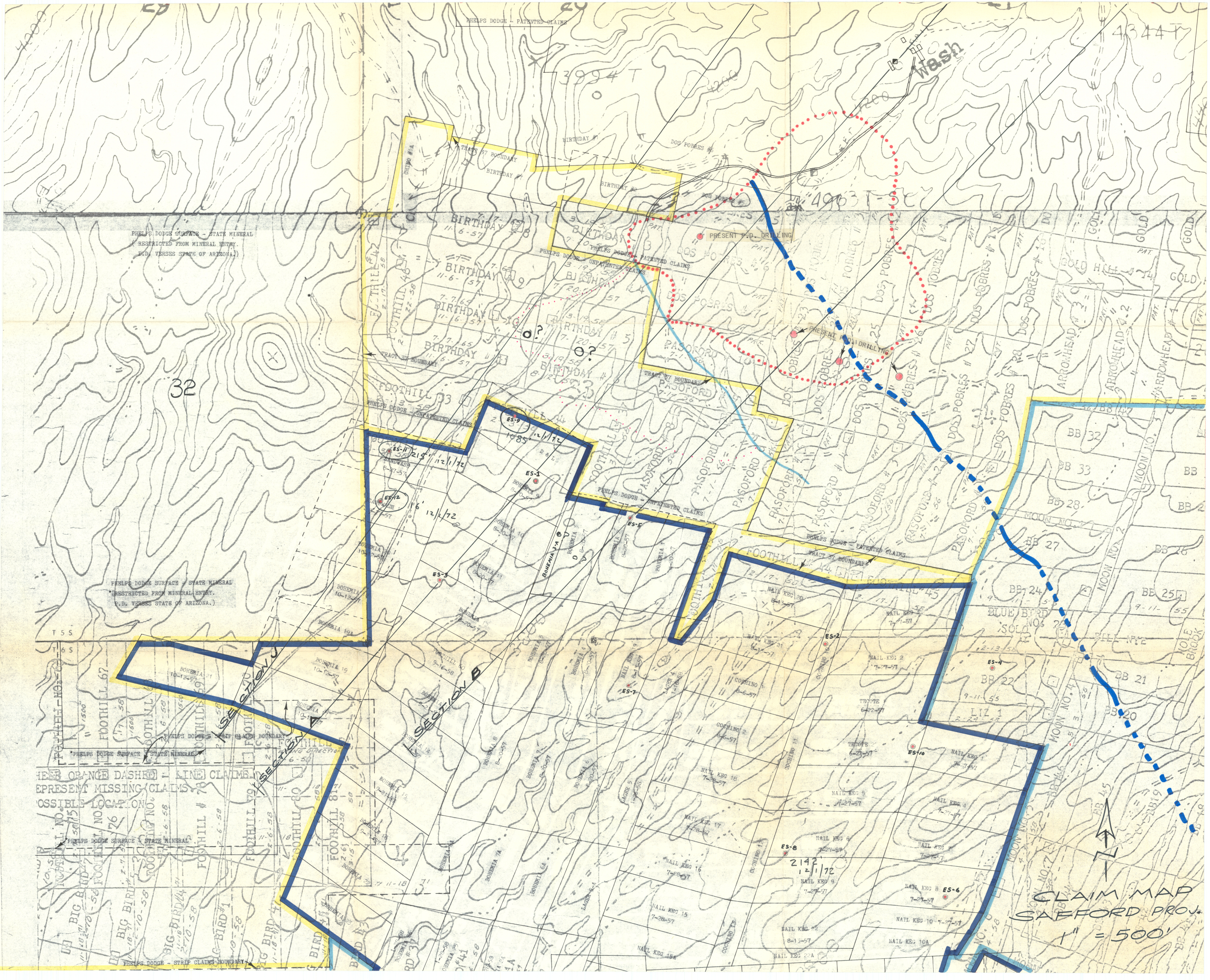
HERE ORANGE DASHED LINE CLAIMS
REPRESENT MISSING CLAIMS
POSSIBLE LOCATION

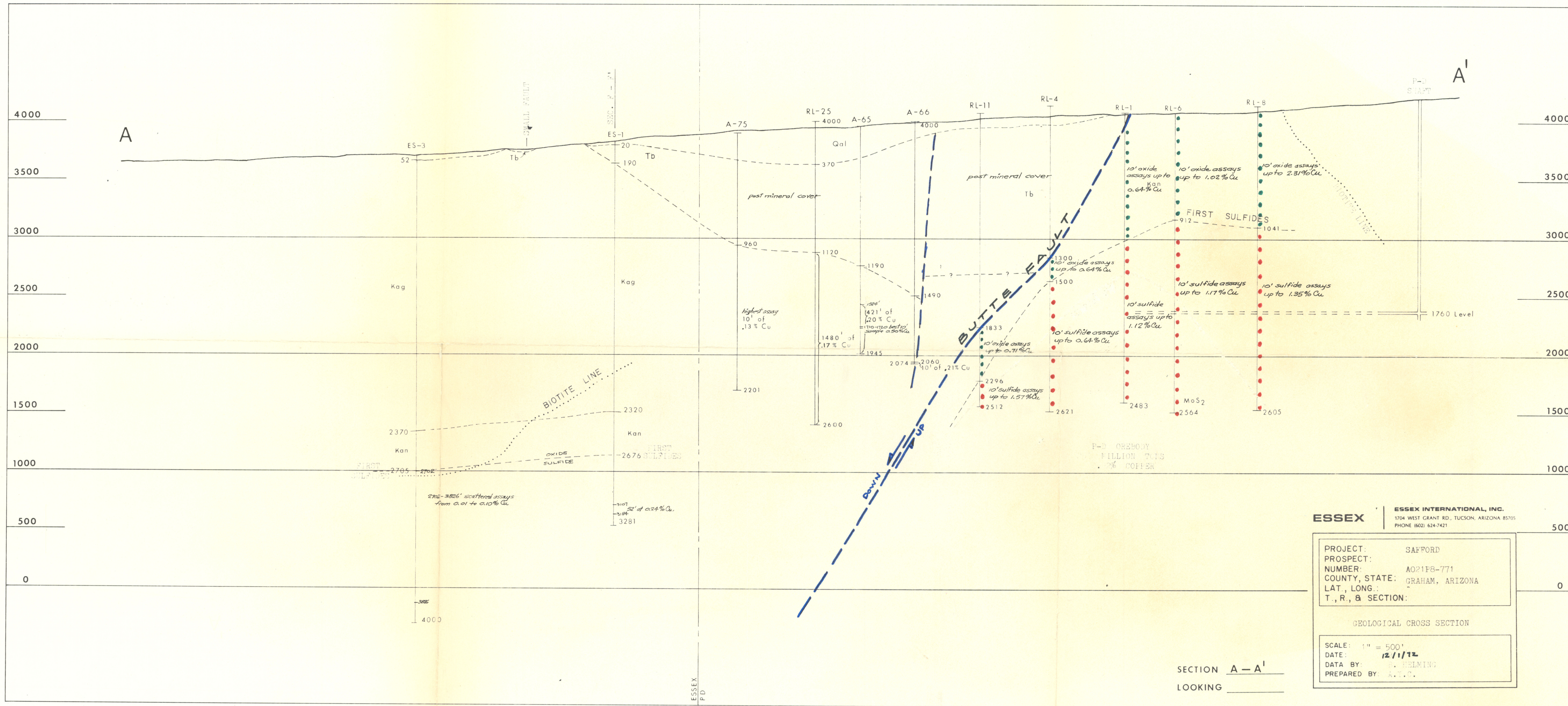
PHILIPS DODGE SURFACE - STATE MINERAL

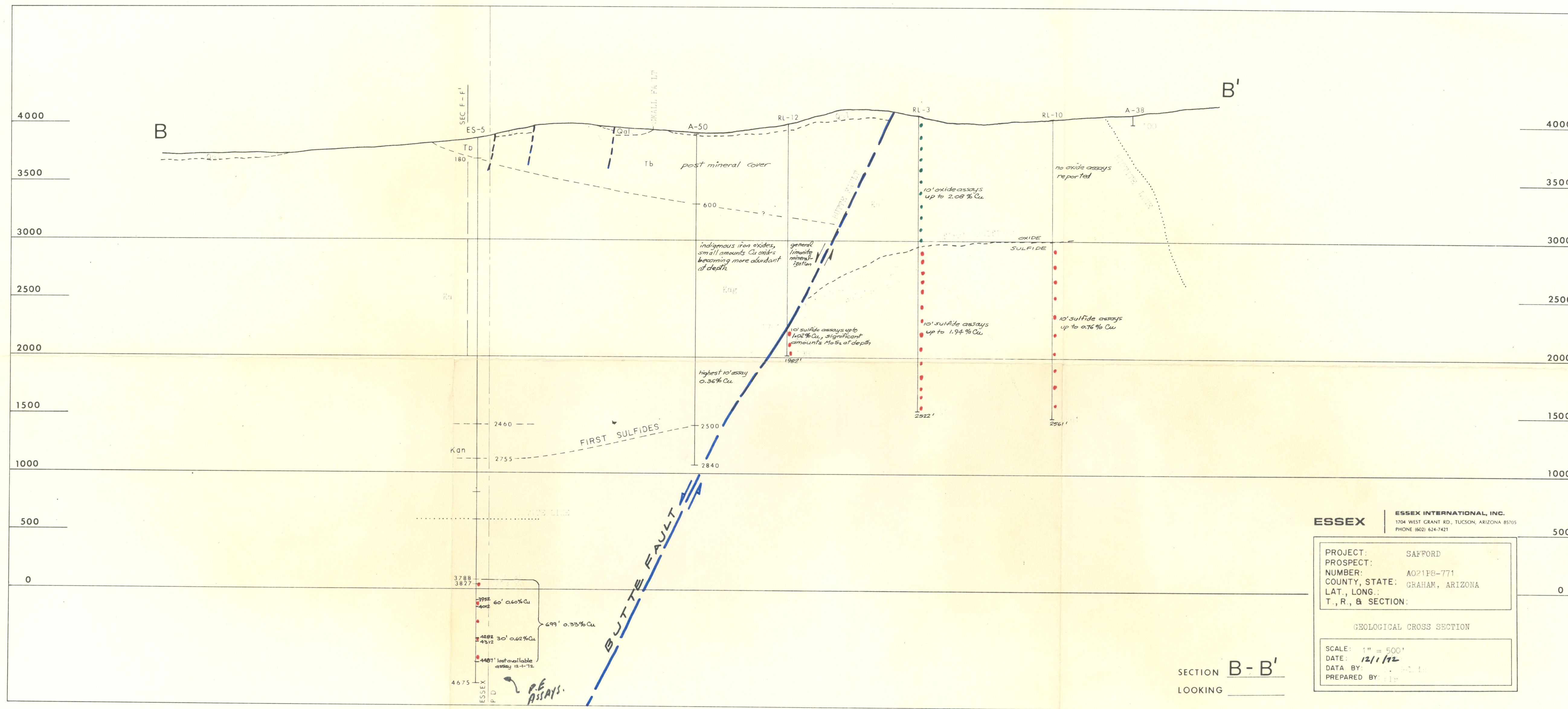
PHILIPS DODGE - STRIP CLAIMS BOUNDARY

PHILIPS DODGE - PATENTED CLAIMS

CLAIM MAP
SAFFORD PROV.
1" = 500'







December 15, 1972

6:25 am A front end loader leased to Essex International, Inc. opened a roadway in the earthen barricade blocking access to a portion of the Kim 1 mining claim and Tract 37. Led by E. Grover Heinrichs, Bob Helming, and Bill Brown on foot, the loader proceeded through the opening in the barrier. Closely following the loader was a Boyles Bros. Drilling Company truck mounted drill rig and a supply truck accompanied by J.K. Jones and D.C. Temple on foot.

6:30 am Approximately 250 feet inside the earthen barricade a guard stood in the roadway and prohibited further entry. The guard was asked by E. Grover Heinrichs on what authority Essex entry was being denied, and he responded that his actions were based on authority of Phelps-Dodge Corporation. Heinrichs then stated that Essex did not recognize that authority in this situation, and was entering the area for the purpose of prospecting on the public domain. The guard responded to this statement by displaying a hand gun and stating, "I have a gun and know how to use it." The drill and supply truck were then backed

ARIZONA DAILY STAR
DEC 16 1972



up to a position approximately 150 feet inside the earthen barricade where terrain was level enough for the drill to be set up. The front end loader was released and departed from the area.

6:43 am The guard ordered Essex personnel not to raise the mast on the drill.

All activity was halted except for activation of a portable heater.

7:00 AM

7:05 am A pickup truck appeared several hundred yards to the northeast. The guard turned away from the drill and fired his hand gun into the air.

The pickup, marked with a sign, "O.B. Willis Co."; proceeded down the hill to the drill.

7:08 am

The guard ^{himself} identified ^{and in the presence of} as Hank Briggs, ~~accompanied by~~ the driver of the pickup ^{who identified himself as} Clifford Willis, stated that as an agent of Phelps-Dodge Corporation he was ordering us to leave Phelps-Dodge property.

J.K. Jones responded that Essex was attempting to prospect on public domain.

7:12 am

Clifford Willis told the guard that he had done his job and both men departed in the pickup. At that time an order was given by J.K. Jones to the drill crew to start the engine, raise the mast, and prepare to drill.

7:15 am The drill mast was raised and drilling started at a location /// feet in a N 49° E direction from the location monument of mining claim Kim 1.

7:17 am Bill Bowen, Phelps-Dodge Corporation geologist, arrived ~~at the drill~~ ^{stated} ~~site~~ and ~~advised~~ ^{ESSEX} that the drill was situated on Tract 37 belonging to Phelps-Dodge Corporation. E. Grover Heinrichs responded that Essex was aware that the drill was on Tract 37, and J.K. Jones stated that entry had been made in order to prospect on the public domain. Bowen informed us of existence of the mining claim named "Scorpion" located between Tract 37 and the D&L claim, and Heinrichs advised Bowen of existence of mining claims Kim 1 and Kim 2. Bowen then departed.

7:25 am Skip Clark, manager of the Safford project for Phelps-Dodge Corporation, arrived at the drill, advised us that he was moving a bulldozer down to the area, and made an inspection on foot of claim posts and survey markers in the vicinity. Clark then returned to his pickup truck several hundred feet away and remained at that location.

7:45 am A bulldozer and another ~~p~~pickup approached from the northeast and stopped at Skip Clark's pickup.

7:50 am Paul Eimon and Howard Lanier arrived. Lanier took the notes describing events back to Safford. A front end loader arrived and parked behind the bulldozer.

8:05 am Bill Bowen, Skip Clark, Clifford Willis, and one other man came to the drill and advised us that they would give us a reasonable time to cease drilling and move the drill rig off their property or they would bring the bulldozer down and push the drill off the property. Paul Eimon ordered the drillers to cease drilling, lower the mast, and move the drill to a position approximately 150 feet southeast of its present location to a spot still inside the barricade but on the ~~Essex~~ Kim 1 claim. The drill ^{drilling hole} stopped at a depth of 15 feet and moved as ordered.

8:15 am Clark Hirshi, field superintendent for Boyles Bros. Drilling Company, arrived and said that at 7:40 am he had been contacted by phone by Bill Bowen of Phelps-Dodge who threatened to destroy the drill rig unless it was moved off Phelps-Dodge property. As the drill mast started to

raise on the new site on Kim 1, Bowen, Willis, and others began walking to the Essex drill beside the bulldozer advancing with its blade down. The bulldozer was stopped on a signal from Bowen approximately 3 feet from Paul Eimon who had placed himself between the bulldozer and the drill rig. Bowen again identified himself as an agent for Phelps-Dodge and stated that the rig must be moved outside of the barricade in 15 minutes or he would order the bulldozer operator to push the rig into the wash. Orders were then given to the drillers to cease operation and remove the drill to a position outside of the barricade.

8:30 am Eimon, Heinrichs and Jones established the position of the south edge of the Kim 1 claim. *Brown and Temple were sent to patrol other portions of the ESSEX claim group.* Numerous Phelps-Dodge personnel inspected claim corners in the area. Bowen approached and stated that the land in dispute, Tract 37, was part of the exchange and that Phelps-Dodge had retained old mineral rights and claimed mineral ownership of the parcel. Bowen refused to say that the barricade was the boundary of Tract 37. Bowen stated that the Kim 2 had not been located yesterday and that

SOUTHWESTERN ASSAYERS & CHEMISTS, Inc.

REGISTERED ASSAYERS

FELIX K. DURAZO
WIL WRIGHT
ARIZONA REG. NO. 5875

P.O. BOX 7517
TUCSON, ARIZONA 85725

710 E. EVANS BLVD.
PHONE 602-294-5811

Still, Lowell, Still
5115 N. Oracle Road
Tucson, Arizona 85704

JOB # 013493
RECEIVED 4-9-73
REPORTED 4-11-73

SAMPLE NUMBER	GOLD OZ.*	SILVER OZ.*	LEAD %	COPPER %	ZINC %		MOLYBDENUM %
5488				.30			
5489				.37			
5490				.22			
5491				.18			
5492				.18			
5493				.07			
5494				.07			
5495				.13			
5496				.24			
5497				.38			
5498				.10			
5499				.16			
5500				.20			
5501				.10			
5502				.12			
5503				.16			

SXM

APR 12 1973

RECEIVED

PROJECT NO.	
PROSPECT NO.	
BUDGET NO.	
APPROVED BY	DATE

CHARGE \$ 32.00

* Gold and Silver reported in troy oz. per 2,000 lb. ton.

INVOICE

SOUTHWESTERN ASSAYERS & CHEMISTS, Inc.

REGISTERED ASSAYERS

FELIX K. DURAZO
WIL WRIGHT
ARIZONA REG. NO. 5875

P.O. BOX 7517
TUCSON, ARIZONA 85725

710 E. EVANS BLVD.
PHONE 602-294-5811

Still, Lowell, Still
5115 N. Oracle Road
Tucson, Arizona 85704

JOB # 013493
RECEIVED 4-9-73
REPORTED 4-11-73

SAMPLE NUMBER	GOLD OZ.*	SILVER OZ.*	LEAD %	COPPER %	ZINC %		MOLYBDENUM %
5488				.30			
5489				.37			
5490				.22			
5491				.18			
5492				.18			
5493				.07			
5494				.07			
5495				.13			
5496				.24			
5497				.38			
5498				.10			
5499				.16			
5500				.20			
5501				.10			
5502				.12			
5503				.16			

SXM
APR 12 1973
RECEIVED

PROJECT NO. _____

PROSPECT NO. _____

BUDGET NO. _____

APPROVED BY _____ DATE _____

CHARGE \$ 32.00

* Gold and Silver reported in troy oz. per 2,000 lb. ton.

INVOICE