



CONTACT INFORMATION  
Mining Records Curator  
Arizona Geological Survey  
3550 N. Central Ave, 2nd floor  
Phoenix, AZ, 85012  
602-771-1601  
<http://www.azgs.az.gov>  
[inquiries@azgs.az.gov](mailto:inquiries@azgs.az.gov)

The following file is part of the Grover Heinrichs Mining Collection

### **ACCESS STATEMENT**

These digitized collections are accessible for purposes of education and research. We have indicated what we know about copyright and rights of privacy, publicity, or trademark. Due to the nature of archival collections, we are not always able to identify this information. We are eager to hear from any rights owners, so that we may obtain accurate information. Upon request, we will remove material from public view while we address a rights issue.

### **CONSTRAINTS STATEMENT**

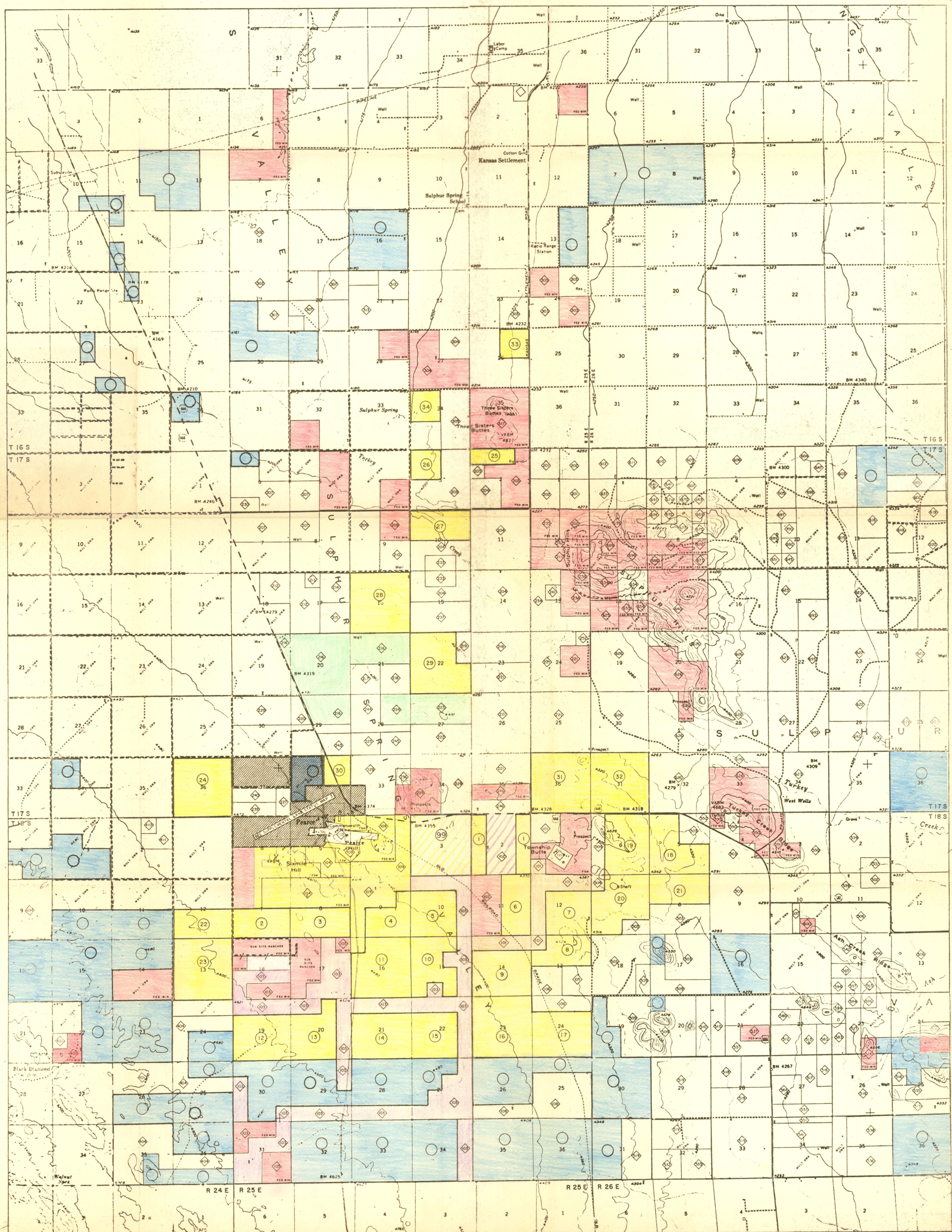
The Arizona Geological Survey does not claim to control all rights for all materials in its collection. These rights include, but are not limited to: copyright, privacy rights, and cultural protection rights. The User hereby assumes all responsibility for obtaining any rights to use the material in excess of "fair use."

The Survey makes no intellectual property claims to the products created by individual authors in the manuscript collections, except when the author deeded those rights to the Survey or when those authors were employed by the State of Arizona and created intellectual products as a function of their official duties. The Survey does maintain property rights to the physical and digital representations of the works.

### **QUALITY STATEMENT**

The Arizona Geological Survey is not responsible for the accuracy of the records, information, or opinions that may be contained in the files. The Survey collects, catalogs, and archives data on mineral properties regardless of its views of the veracity or accuracy of those data.



[illegible]



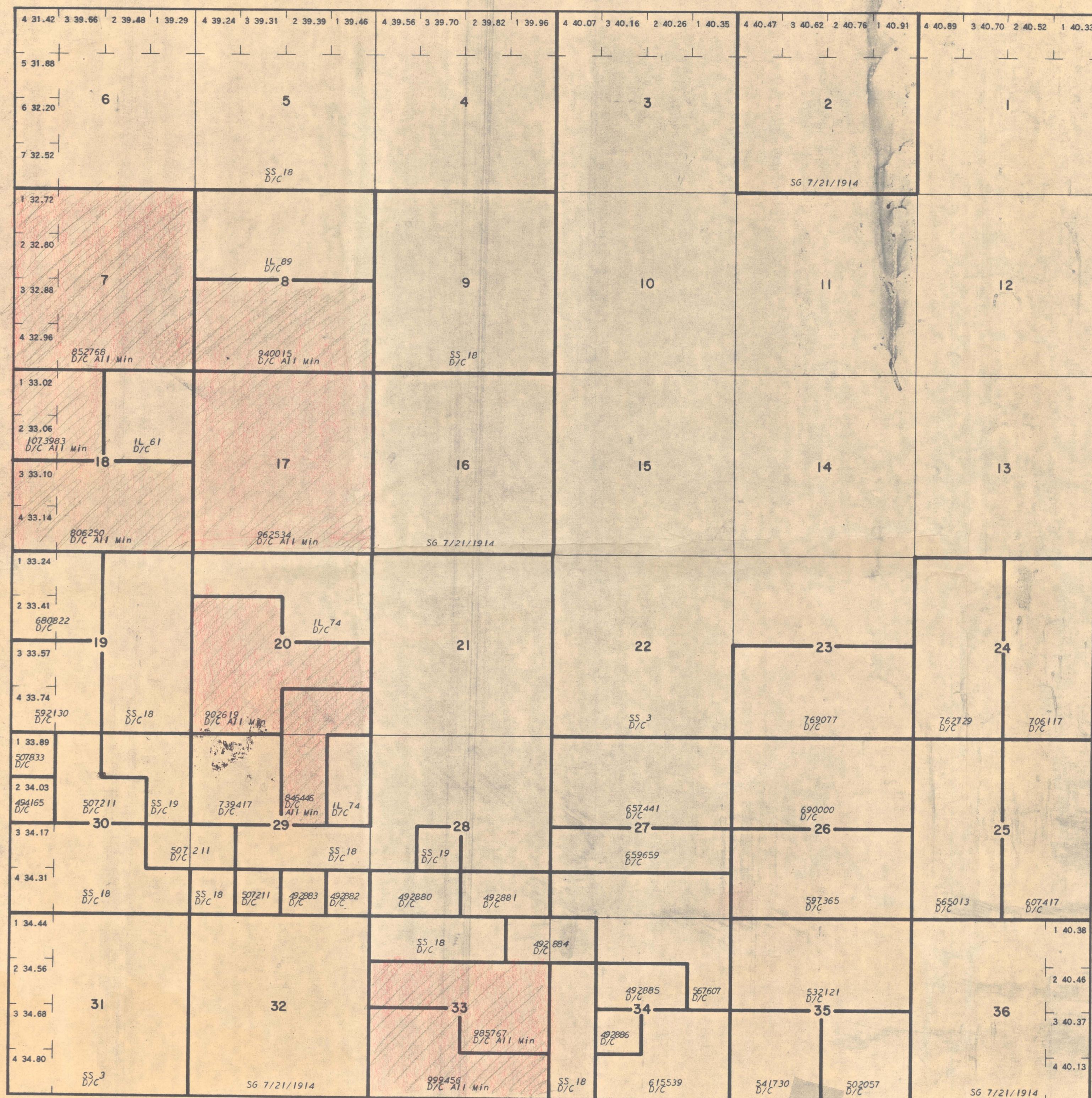
## STATUS OF PUBLIC DOMAIN LAND AND MINERAL TITLES

COCHISE COUNTY

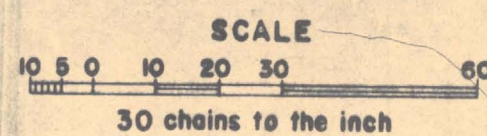
[illegible]

FOR ORDERS EFFECTING DISPOSAL OR USE OF  
UNIDENTIFIED LANDS WITHDRAWN FOR CLASSIFICATION,  
MINERALS, WATER AND/OR OTHER PUBLIC PURPOSES,  
REFER TO INDEX OF MISCELLANEOUS DOCUMENTS.

DIST NO. 4



Lat.  $31^{\circ}53'44''$  N  
Long.  $109^{\circ}39'09''$  W

[illegible]

T. 17S  
R. 26E

File D-1



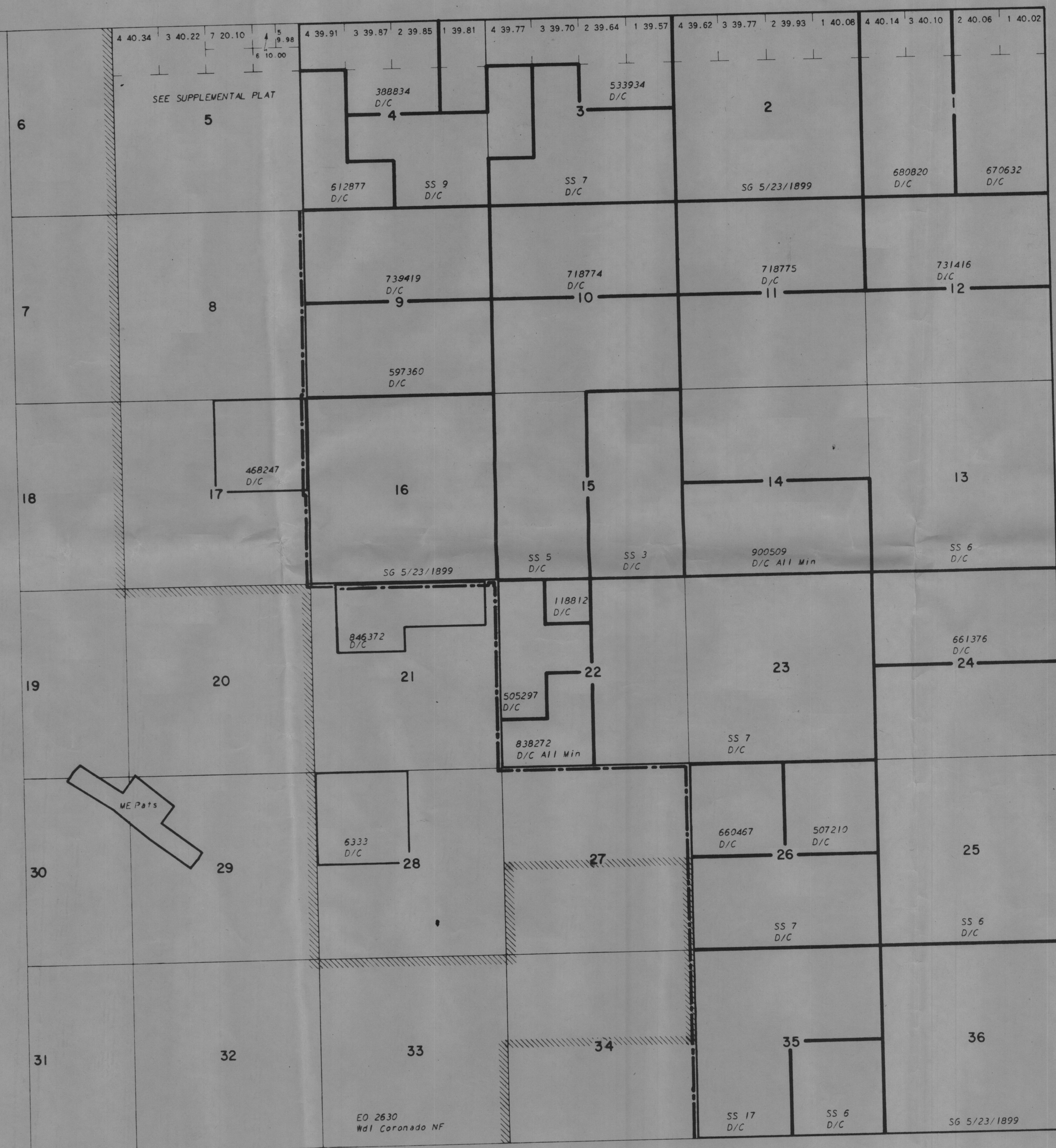
# STATUS OF PUBLIC DOMAIN LAND AND MINERAL TITLES

[illegible]

PROTRACTION DIAGRAM NO. 78A

DIST NO. 4 (Sec's 1 thru 4, 9 thru 16, 22 thru 26, 35, 36)

MDS 798 SW



Lat.  $31^{\circ}49' N$   
Long.  $109^{\circ}51' W$

SCALE

10 5 0 10 20 30 60

30 chains to the inch

[illegible]

18 S  
24 E

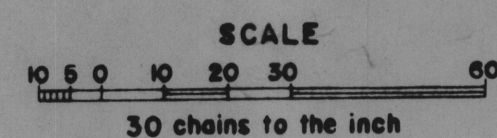
File D-1



## STATUS OF PUBLIC DOMAIN LAND AND MINERAL TITLES

[illegible]

DIST NO. 4

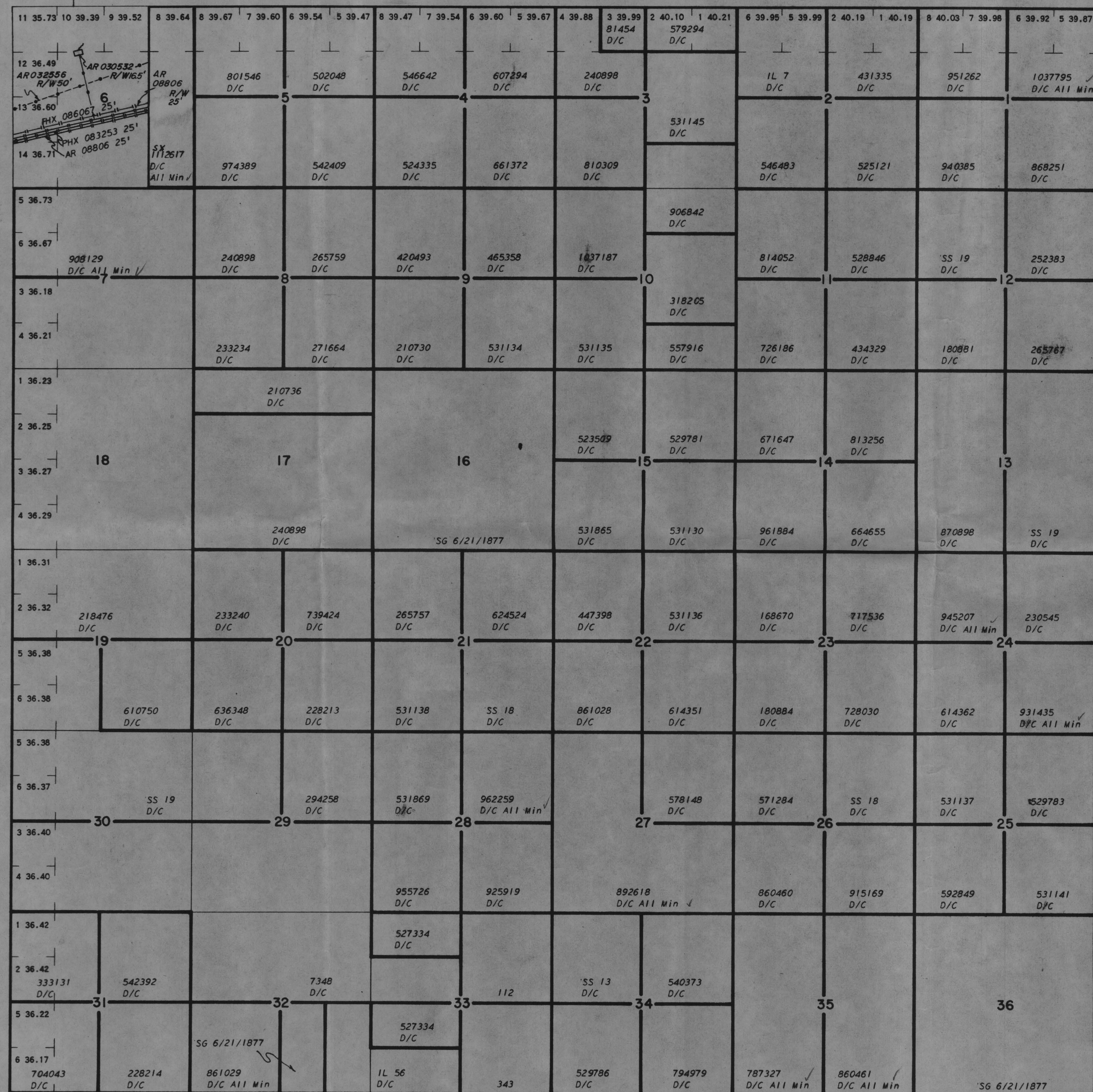
[illegible]

T. 18 S  
R. 26 E

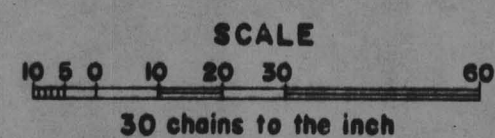
File D-1



## COCHISE COUNTY

[illegible]DIST NO. 4

Lat.  $31^{\circ}59'12''$  N  
Long.  $109^{\circ}44'32''$  W

[illegible]

16 S  
25 E

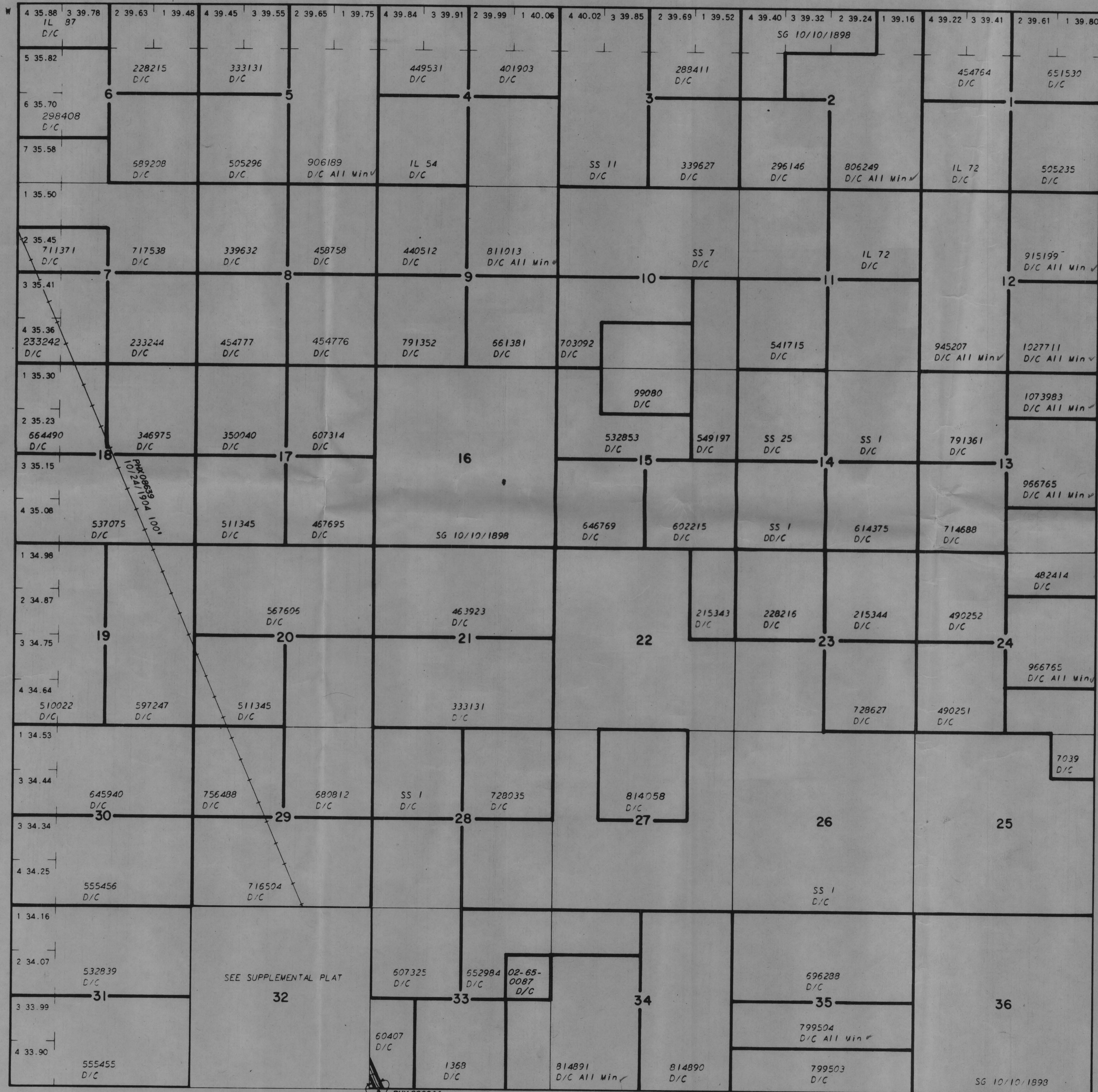
File D-1



## STATUS OF PUBLIC DOMAIN LAND AND MINERAL TITLES

COCHISE COUNTY

Lat. 32° N  
Long. 109° 50' W

[illegible]

FOR ORDERS EFFECTING DISPOSAL OR USE OF  
UNIDENTIFIED LANDS WITHDRAWN FOR CLASSIFICATION,  
MINERALS, WATER AND/OR OTHER PUBLIC PURPOSES,  
REFER TO INDEX OF MISCELLANEOUS DOCUMENTS.

DIST NO. 4

[illegible]

17 S  
25 E

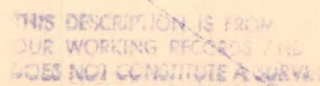
File D-1

SCALE

10 5 0 10 20 30 60

30 chains to the inch



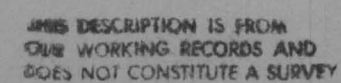






THIS DESCRIPTION IS FROM  
OUR WORKING RECORDS AND  
DOES NOT CONSTITUTE A SURVEY



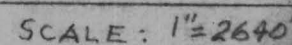


SCALE  
1"=2640'



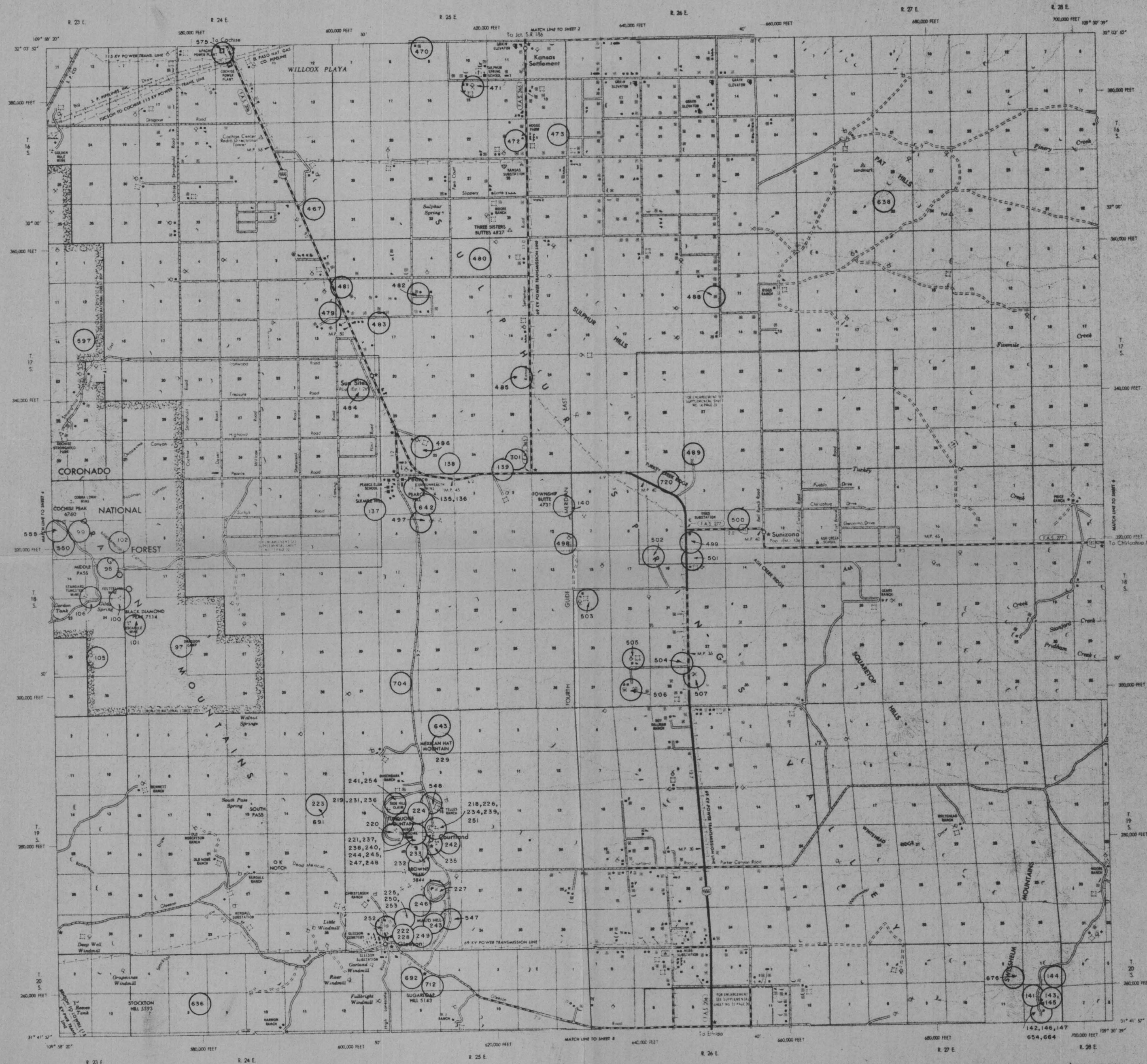






COUNTY ASSESSOR'S MAP

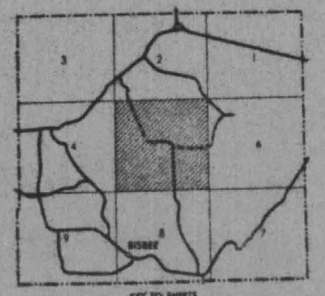




TRANSVERSE MERCATOR PROJECTION, ARIZONA EAST ZONE  
COMPILED BY PHOTOGRAMMETRIC METHODS  
CONTROL BY U. S. COAST AND GEODETIC SURVEY, U. S. GEOLOGICAL SURVEY  
U. S. FOREST SERVICE AND BUREAU OF LAND MANAGEMENT  
INVENTORY 1963

PUBLISHED 1964

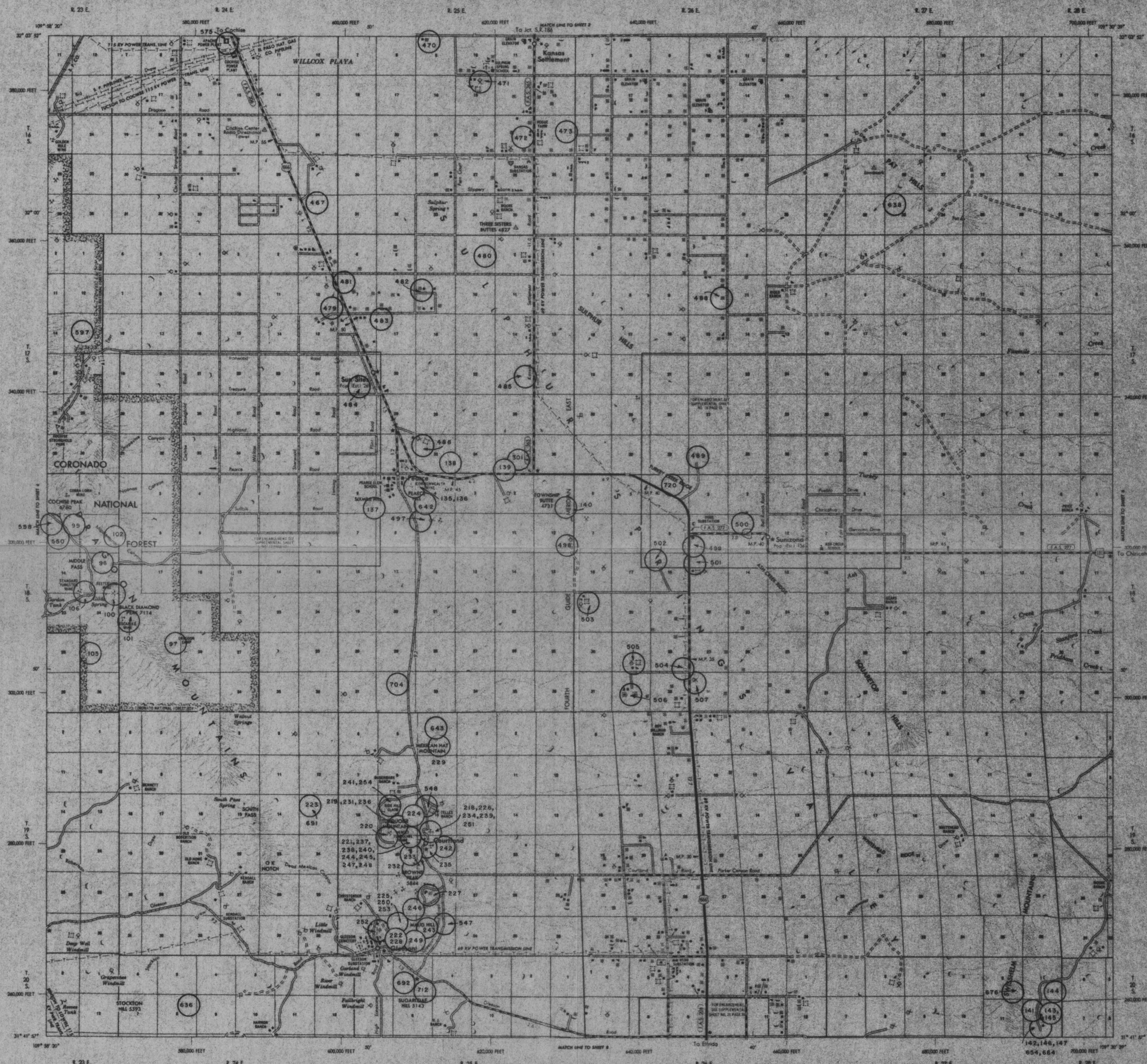
GENERAL HIGHWAY MAP  
COCHISE COUNTY, ARIZONA  
ARIZONA STATE HIGHWAY DEPARTMENT  
PHOTOGRAMMETRY AND MAPPING DIVISION  
IN COOPERATION WITH THE  
UNITED STATES DEPARTMENT OF COMMERCE  
BUREAU OF PUBLIC ROADS  
1963



COPYRIGHT ARIZONA HIGHWAY DEPARTMENT 1964

SHEET 5 OF 9 MAP SHEETS AND 33 SUPPLEMENTAL SHEETS

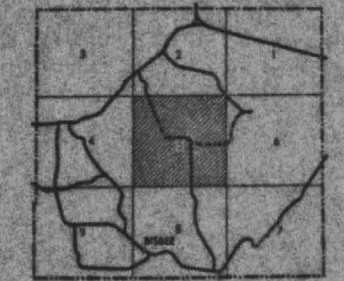




TRANSVERSE MERCATOR PROJECTION, ARIZONA EAST ZONE  
COMPILED BY PHOTOGRAMMETRIC METHODS  
CONTROL BY U. S. COAST AND GEODETIC SURVEY, U. S. GEOLOGICAL SURVEY  
U. S. FOREST SERVICE AND BUREAU OF LAND MANAGEMENT  
INVENTORY 1963

PUBLISHED 1966

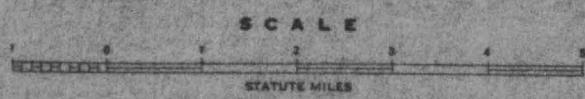
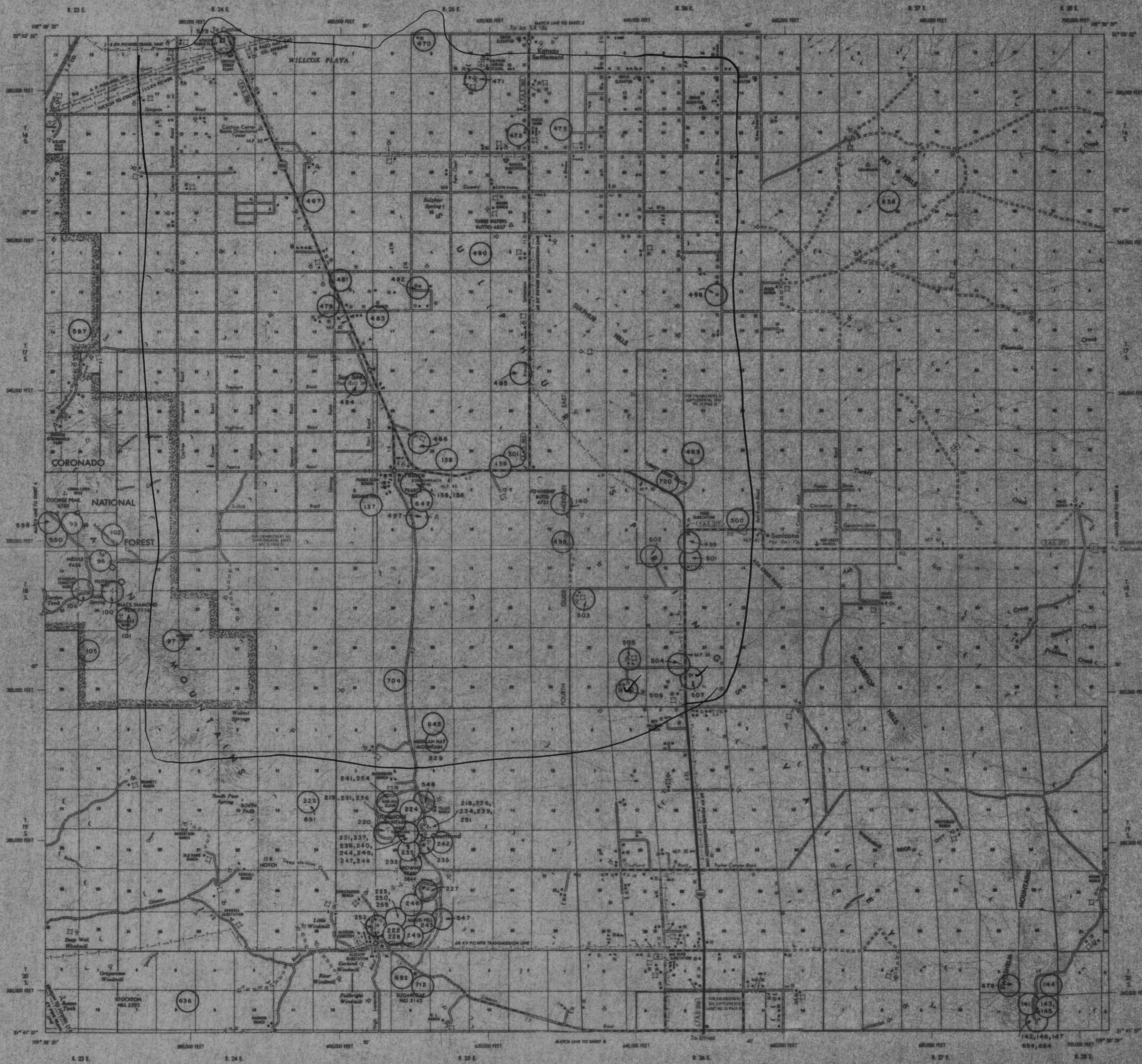
GENERAL HIGHWAY MAP  
COCHISE COUNTY, ARIZONA  
ARIZONA STATE HIGHWAY DEPARTMENT  
PHOTOGRAMMETRY AND MAPPING DIVISION  
IN COOPERATION WITH THE  
UNITED STATES DEPARTMENT OF COMMERCE  
BUREAU OF PUBLIC ROADS  
1965



COPYRIGHT ARIZONA HIGHWAY DEPARTMENT 1966

SHEET 5 OF 9 MAP SHEETS AND 33 SUPPLEMENTAL SHEETS





TRANSVERSE MERCATOR PROJECTION, ARIZONA EAST ZONE  
COMPILED BY PHOTOGRAMMETRIC METHODS  
CONTROL BY U. S. COAST AND GEODETIC SURVEY & GEOLOGICAL SURVEY  
U. S. FOREST SERVICE AND BUREAU OF LAND MANAGEMENT  
INVENTORY 1965

PUBLISHED 1966

GENERAL HIGHWAY MAP  
COCHISE COUNTY, ARIZONA  
ARIZONA STATE HIGHWAY DEPARTMENT  
PHOTOGRAMMETRY AND MAPPING DIVISION  
IN COOPERATION WITH THE  
UNITED STATES DEPARTMENT OF COMMERCE  
BUREAU OF PUBLIC ROADS  
1965



COPYRIGHT ARIZONA HIGHWAY DEPARTMENT 1966

SHEET 5 OF 9 MAP SHEETS AND 33 SUPPLEMENTAL SHEETS



C. Colvane Henrichs  
4 Associates





## ARIZONA STATE LAND DEPARTMENT

### STATE TRUST LANDS SURFACE

#### LEGEND



STATE



BLM



OTHER

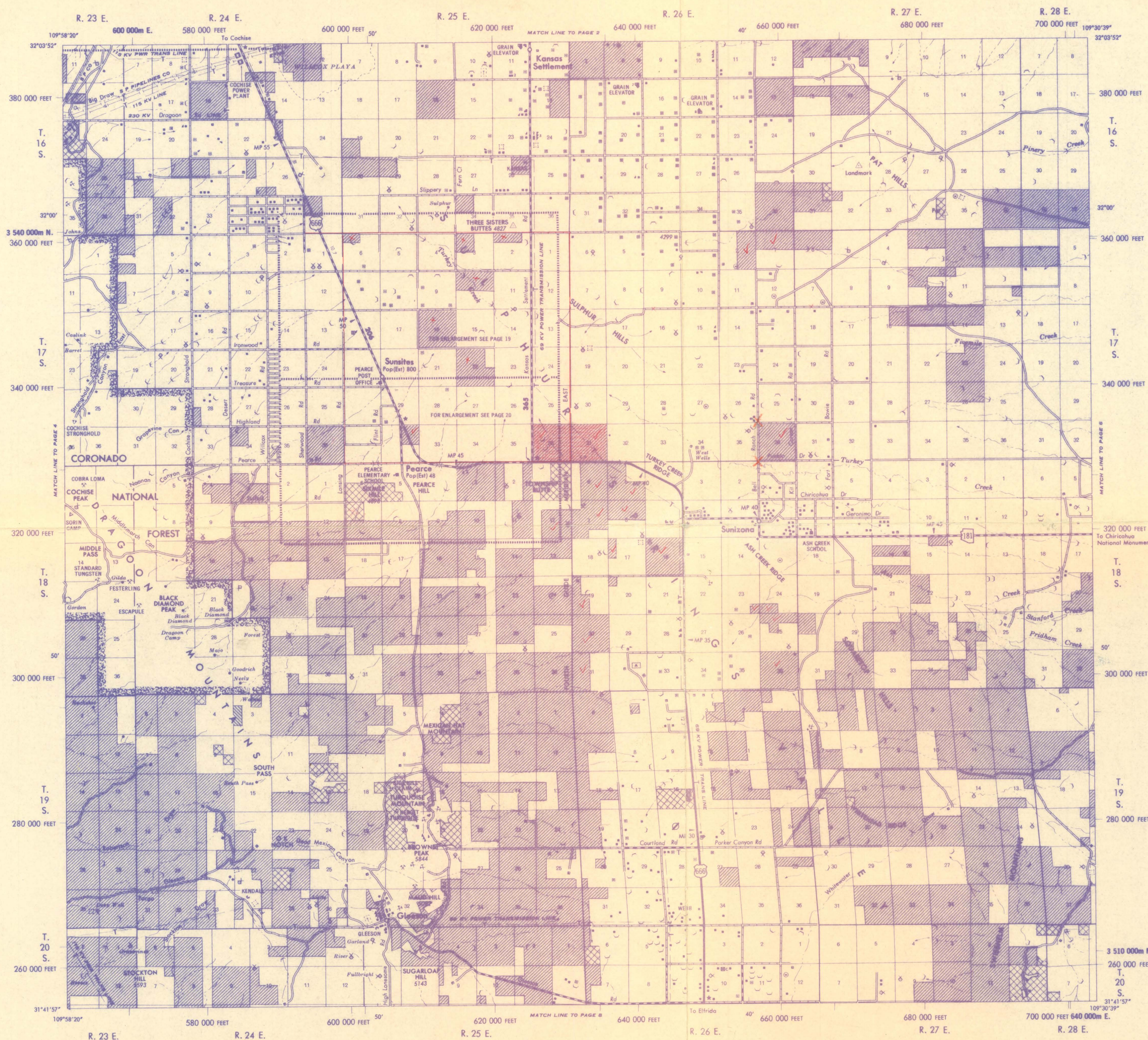
(PRIVATE, IND. & MIL. RES.,  
NAT'L. & ST. PARKS & MON'S.,  
NAT'L FORESTS)

DATE 5/5/80

COUNTY COCHISE

SHEET 5

The Arizona State Land Department  
and The Bureau of Land Management  
make no warranties, implied or  
expressed, with respect to information  
shown on these maps.



#### GENERAL HIGHWAY MAP COCHISE COUNTY, ARIZONA

ARIZONA DEPARTMENT OF TRANSPORTATION  
HIGHWAYS DIVISION  
PHOTOGRAMMETRY & MAPPING SERVICES  
IN COOPERATION WITH THE  
U.S. DEPARTMENT OF TRANSPORTATION  
FEDERAL HIGHWAY ADMINISTRATION  
1977

© ADOT

GENERAL HIGHWAY MAP COCHISE COUNTY ARIZONA



Supplemental plats of  
Sec 4 T18S R25E  
available from BLM