



CONTACT INFORMATION
Mining Records Curator
Arizona Geological Survey
3550 N. Central Ave, 2nd floor
Phoenix, AZ, 85012
602-771-1601
<http://www.azgs.az.gov>
inquiries@azgs.az.gov

The following file is part of the Grover Heinrichs Mining Collection

ACCESS STATEMENT

These digitized collections are accessible for purposes of education and research. We have indicated what we know about copyright and rights of privacy, publicity, or trademark. Due to the nature of archival collections, we are not always able to identify this information. We are eager to hear from any rights owners, so that we may obtain accurate information. Upon request, we will remove material from public view while we address a rights issue.

CONSTRAINTS STATEMENT

The Arizona Geological Survey does not claim to control all rights for all materials in its collection. These rights include, but are not limited to: copyright, privacy rights, and cultural protection rights. The User hereby assumes all responsibility for obtaining any rights to use the material in excess of "fair use."

The Survey makes no intellectual property claims to the products created by individual authors in the manuscript collections, except when the author deeded those rights to the Survey or when those authors were employed by the State of Arizona and created intellectual products as a function of their official duties. The Survey does maintain property rights to the physical and digital representations of the works.

QUALITY STATEMENT

The Arizona Geological Survey is not responsible for the accuracy of the records, information, or opinions that may be contained in the files. The Survey collects, catalogs, and archives data on mineral properties regardless of its views of the veracity or accuracy of those data.

Platoro Mines, Inc.

1802 W. Grant Road
Tucson, Arizona 85705

Sept. 8, 1976.

To the Shareholders of Platoro Mines Inc.

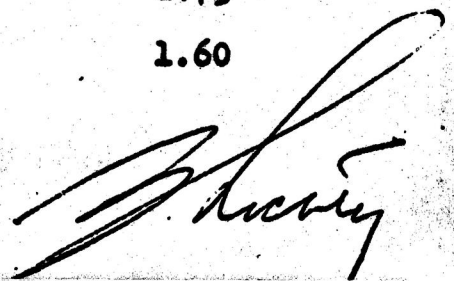
The following are the results of the recent campaign of drilling at the Commonwealth property by Bethlehem Copper. The locations of their holes are shown on the enclosed sketch which also has our drill hole locations.

- DDH-1 Diamond drill hole - 45 degree angle hole directed due north - ran into open workings and stopped drilling.
- DDH-2 Diamond drill hole - 45 degree angle hole directed due north hoping to drill under open workings of DDH-1. Also ran into open workings and stopped drilling.
- P-76-6 Percussion hole 6" dia. - vertical - drilled 650 feet
Values - 2.15 ozs. Ag/ton from 125 to 132 feet.
- P-76-7 Percussion hole 6" dia. - vertical - drilled 500 feet
Values - 3.65 ozs Ag/ton from 340 to 360 feet.
Other scattered values up to 2 oz Ag/ton in hole.
- P-76-8 Percussion hole 6" dia. - vertical - drilled 290 feet
Values - 2.25 ozs. Ag/ton from 285 to 290 feet.
At 290 feet entered old workings and stopped.
- P-76-9 Percussion hole 6" dia. - vertical - drilled 255 feet
and entered old workings.
Values 2.0 ozs. Ag/ton from 50 to 65 feet
1.5 ozs. Ag/ton from 125 to 140 feet.
- P-76-10 Percussion hole 6" dia. - vertical - drilled 500 feet
1.4 oz Ag/ton highest assay.
- P-76-3 Diamond drill hole 45 degree angle hole directed due north - ran into open workings and stopped drilling.

P-76-11

Percussion hole 6" dia. - Vertical - 500 feet deep.

<u>Depth</u>	<u>Silver - oz/T.</u>
135-140	1.25
140-145	1.85
145-150	1.50
150-155	2.00
155-160	1.55
160-165	1.60
165-170	1.55
170-175	.70
175-180	8.55
180-185	2.15
185-190	2.00
190-195	3.00
195-200	1.75
200-205	.25
205-210	.70
210-215	.65
215-220	.15
220-225	1.50
225-230	1.85
230-235	1.30
235-240	3.50
240-245	1.65
245-250	1.35
330-335	1.75
335-340	1.60



Platoro Mines, Inc.

1802 W. Grant Road
Tucson, Arizona 85705

Sept. 8, 1976.

To the Shareholders of Platoro Mines Inc.

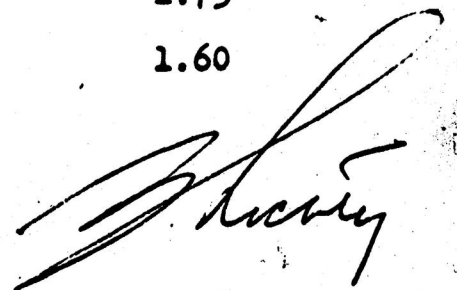
The following are the results of the recent campaign of drilling at the Commonwealth property by Bethlehem Copper. The locations of their holes are shown on the enclosed sketch which also has our drill hole locations.

- DDH-1 Diamond drill hole - 45 degree angle hole directed due north - ran into open workings and stopped drilling.
- DDH-2 Diamond drill hole - 45 degree angle hole directed due north hoping to drill under open workings of DDH-1. Also ran into open workings and stopped drilling.
- P-76-6 Percussion hole 6" dia. - vertical - drilled 650 feet
Values - 2.15 ozs. Ag/ton from 125 to 132 feet.
- P-76-7 Percussion hole 6" dia. - vertical - drilled 500 feet
Values - 3.65 ozs Ag/ton from 340 to 360 feet.
Other scattered values up to 2 oz Ag/ton in hole.
- P-76-8 Percussion hole 6" dia. - vertical - drilled 290 feet
Values - 2.25 ozs. Ag/ton from 285 to 290 feet.
At 290 feet entered old workings and stopped.
- P-76-9 Percussion hole 6" dia. - vertical - drilled 255 feet
and entered old workings.
Values 2.0 ozs. Ag/ton from 50 to 65 feet
1.5 ozs. Ag/ton from 125 to 140 feet.
- P-76-10 Percussion hole 6" dia. - vertical - drilled 500 feet
1.4 oz Ag/ton highest assay.
- P-76-3 Diamond drill hole 45 degree angle hole directed due north - ran into open workings and stopped drilling.

P-76-11

Percussion hole 6" dia. - Vertical - 500 feet deep.

<u>Depth</u>	<u>Silver - oz/T.</u>
135-140	1.25
140-145	1.85
145-150	1.50
150-155	2.00
155-160	1.55
160-165	1.60
165-170	1.55
170-175	.70
175-180	8.55
180-185	2.15
185-190	2.00
190-195	3.00
195-200	1.75
200-205	.25
205-210	.70
210-215	.65
215-220	.15
220-225	1.50
225-230	1.85
230-235	1.30
235-240	3.50
240-245	1.65
245-250	1.35
330-335	1.75
335-340	1.60

A handwritten signature in black ink, appearing to read "Shively", is located in the bottom right corner of the page.

HOLE CS-1

Sample #	Depth	oz./T		Sample #	Depth	oz./T	
		Au	Ag			Au	Ag
201	0-6	T	.35	230	145-150	T	.10
2	6-10	T	.10	31	150-155	.005	.55
3	10-15	T	.25	32	155-160	T	.30
4	15-20	T	.15	33	160-165	T	.10
5	20-25	.005	.40	34	165-170	T	.25
6	25-30	.005	.25	35	170-175	T	.20
7	30-35	T	.30	36	175-180	T	.10
8	35-40	T	.10	37	180-185	T	.65
9	40-45	.005	.15	38	185-190	.02	2.35
210	45-50	T	.15	39	190-195	.01	2.00
11	50-55	.005	.35	240	195-200	.01	2.25
12	55-60	.005	.85	41	200-205	.005	1.60
13	60-65	.01	1.85	42	205-210	.02	3.05
14	65-70	.03	7.25	43	210-215	.02	3.55
15	70-75	.04	9.10	44	215-220	.01	2.40
16	75-80	.02	7.85	45	220-225	.015	4.10
17	80-85	.04	21.75	46	225-230	.01	3.35
18	85-90	.015	6.10	47	230-235	.015	3.60
19	90-95	.02	6.50	48	235-240	.02	4.25
220	95-100	.01	3.35	49	240-245	.015	3.45
21	100-105	.005	1.85	250	245-250	.01	2.80
22	105-110	.02	5.20	51	250-255	.015	3.40
23	110-115	.01	2.50	52	255-260	.01	2.45
24	115-120	T	.95	53	260-265	.005	2.30
25	120-125	.01	1.45	254	265-270	.005	2.75
26	125-130	.005	1.00		E.O.H. 270'		
27	130-135	T	.55				
28	135-140	T	.20				
29	140-145	.005	.25				

HOLE CS-2

Sample #	Depth	oz./T		Sample #	Depth	oz./T	
		Au	Ag			Au	Ag
255	0-6	T					
56	6-10	T	.15	282	135-140	T	.20
57	10-15		.20	83	140-145	.005	.40
58	15-20	.005	.20	84	145-150	.005	.75
59	20-25	T	.10	85	150-155	T	.65
260	25-30	T	.15	286	155-160	.01	.90
61	30-35	.005	.25				
62	35-40	T	.50				
63	40-45	.005	1.35				
64	45-50	.01	.85				
65	50-55	.005	1.15				
66	55-60	T	.35				
67	60-65	T	.40				
68	65-70	T	.20				
69	70-75	T	.25				
270	75-80	.01	1.75				
71	80-85	T	.25				
72	85-90	T	.15				
73	90-95	.005	.35				
74	95-100	T	.20				
75	100-105	.005	.50				
76	105-110	.01	1.45				
77	110-115	T	.25				
78	115-120	.005	1.70				
79	120-125	T	.70				
280	125-130	T	.35				
81	130-135	T	.15				
		T	.25				

HOLE CS-3

Sample #	Depth	oz./T		Sample #	Depth	oz./T	
		Au	Ag			Au	Ag
287	0-5	.01	.85	16	145-150	T	2.15
88	5-10	.005	.70	17	150-155	.005	2.30
89	10-15	T	.85	18	155-160	.02	5.05
290	15-20	T	.60	19	160-165	.02	6.20
91	20-25	T	.65	320	165-170	.01	3.25
92	25-30	.005	.60	21	170-175	.01	2.40
93	30-35	.005	.50	22	175-180	.02	3.35
94	35-40	T	.55	23	180-185	.005	2.90
95	40-45	T	.65	24	185-190	.005	3.00
96	45-50	.005	.70	25	190-195	.01	4.05
97	50-55	T	.45	26	195-200	.02	2.80
98	55-60	.005	1.95	27	200-205	.01	4.10
99	60-65	T	1.50	28	205-210	.01	3.35
300	65-70	.005	2.45	29	210-215	.02	3.35
1	70-75	.01	3.35	330	215-220	.005	2.55
2	75-80	.005	2.40	31	220-225	.005	1.40
3	80-85	.005	1.90	32	225-230	.01	2.30
4	85-90	T	1.85	33	230-235	.01	3.25
5	90-95	.01	3.50	34	235-240	.02	3.50
6	95-100	.01	6.35	35	240-245	.02	4.75
7	100-105	.01	6.45	36	245-250	.01	3.65
8	105-110	T	3.85	37	250-255	.02	3.60
9	110-115	.005	3.00	38	255-260	T	3.45
310	115-120	.005	1.60	39	260-265	.005	2.55
11	120-125	.T	1.45	340	265-270	T	2.20
12	125-130	.005	1.70		E.O.H. 270'		
13	130-135	T	1.45				
14	135-140	T	1.65				
15	140-145	.005	2.40				

HOLE CS-4

Sample #	Depth	oz./T		Sample #	Depth	oz./T	
		Au	Ag			Au	Ag
341	0-5	T	.60	370	145-150	.005	2.25
42	5-10	T	.55	71	150-155	.01	2.00
43	10-15	T	.20	72	155-160	.005	2.95
44	15-20	T	.45	73	160-165	.01	3.35
45	20-25	T	.55	74	165-170	.01	2.60
46	25-30	T	.50	75	170-175	.03	5.15
47	30-35	T	.45	76	175-180	.01	2.85
48	35-40	T	.70	77	180-185	.03	3.20
49	40-45	T	.60	78	185-190	.005	1.15
350	45-50	.005	.85	79	190-195	.005	.85
51	50-55	.005	.70	380	195-200	T	1.60
52	55-60	T	.80		E.O.H.		
53	60-65	T	.75		200'		
54	65-70	.005	2.00				
55	70-75	.005	2.55				
56	75-80	.01	3.00				
57	80-85	.005	2.10				
58	85-90	.005	2.75				
59	90-95	T	2.60				
360	95-100	T	2.65				
61	100-105	T	2.20				
62	105-110	.005	1.75				
63	110-115	.005	1.50				
64	115-120	T	1.40				
65	120-125	T	1.00				
66	125-130	T	1.85				
67	130-135	.005	.90				
68	135-140	.01	3.15				
69	140-145	.01	5.35				

HOLE CS-5

Sample #	Depth	oz./T		Sample #	Depth	oz./T	
		Au	Ag			Au	Ag
331	0-5	T	.65	410	145-150	.01	2.15
82	5-10	T	.20	11	150-155	.005	1.55
83	10-15	T	.55	12	155-160	T	1.30
84	15-20	T	.20	13	160-165	.03	4.25
85	20-25	T	.15	14	165-170	.02	4.40
86	25-30	T	.50	15	170-175	.01	2.15
87	30-35	T	.85	16	175-180	.01	1.90
88	35-40	T	.60	17	180-185	.005	1.25
89	40-45	T	.35	18	185-190	T	.70
390	45-50	.005	.95	19	190-195	T	1.45
91	50-55	T	.15	420	195-200	.07	8.95
92	55-60	.005	.65	21	200-205	.03	6.70
93	60-65	.005	.60	22	205-210	.01	3.30
94	65-70	.01	2.10	23	210-215	.03	8.35
95	70-75	.01	2.70	24	215-220	.01	2.65
96	75-80	.01	4.10	25	220-225	.01	2.10
97	80-85	.01	2.75	26	225-230	.005	1.35
98	85-90	.005	1.70	27	230-235	.005	2.00
99	90-95	T	.85	28	235-240	.005	2.45
400	95-100	T	.40	29	240-245	.01	6.40
	100-105	T	1.05	430	245-250	.03	4.15
02	105-110	T	1.00				
03	110-115	T	.80				
04	115-120	.005	1.75				
05	120-125	T	1.15				
06	125-130	T	.50				
07	130-135	.005	1.20				
08	135-140	.005	1.70				
09	140-145	.01	2.10				

E.O.H. 250'

Commonwealth Drilling - Bethlehem

8/23/76

5 holes completed

Percussive

P-1 200' S of CS#1

P-2 - 100' E of P1

P-3 - 100' E of P2

P-4 100' E of P3
ran into 7th level
drift

P-5 - 30' ~~S~~ of P4

P-6 200' N of P4

difficulties drilling \$6.25 per foot

Drawing sections
draft sections

Mike Grace

Commonwealth Drilling Bethex.

0 - 123'

20' lacking

	Au	Ag (oz)
1st bunch	tr.	.15, 5 - .6 oz.
108)	.01	1.5
113)	.01	1.8
118)		
123)	.01	2.15

MISSING ASSAYS FROM WESTERN STATES HOLES

WC 10 195 - 365

WC 12B 0 - 85

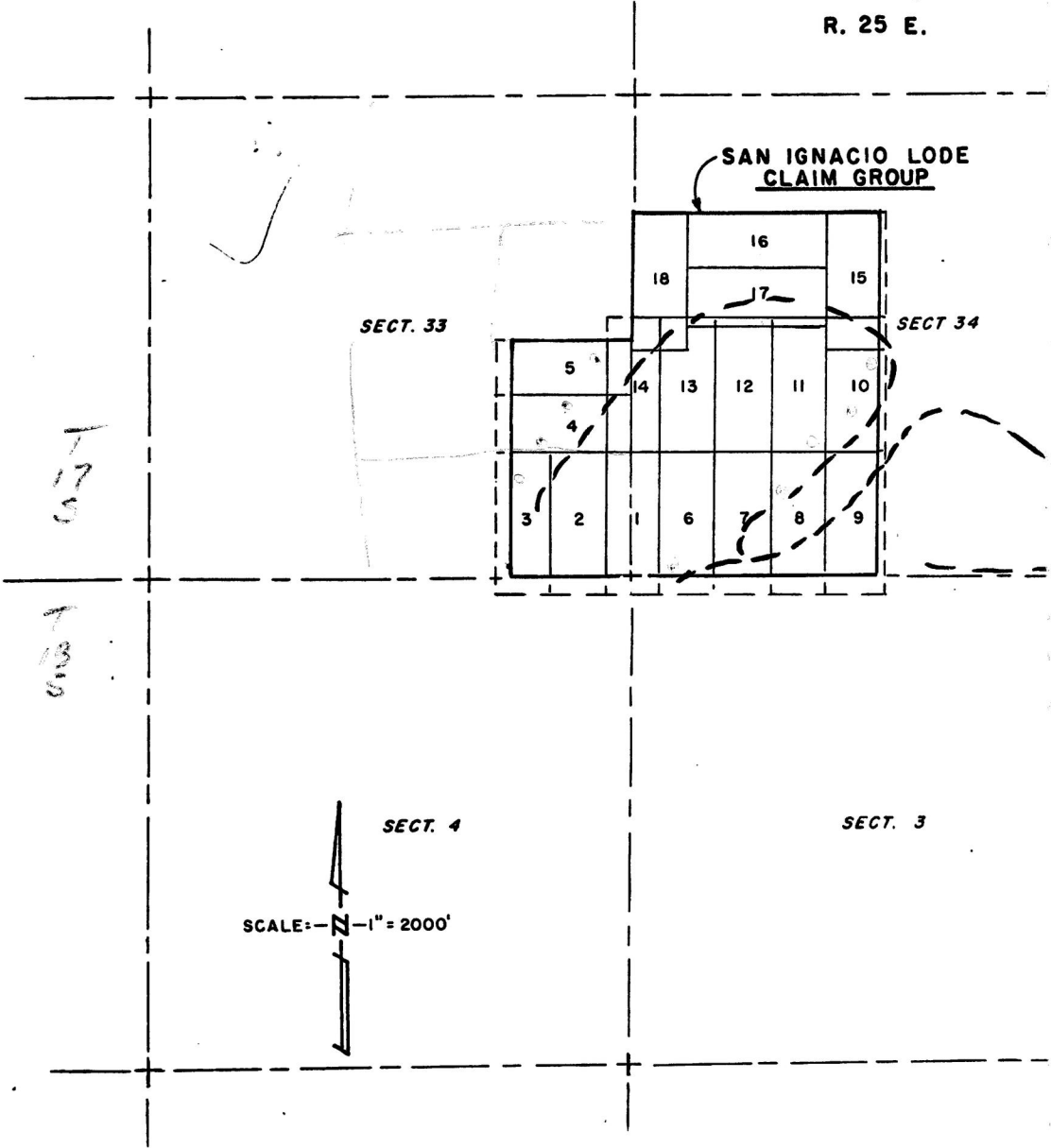
WC 13 NO ASSAYS SHOWN (WAS IT DRILLED)?

WC 14 0 - 305

WC 15 0 - 220

COCHISE COUNTY, ARIZON
R. 25 E.

SAN IGNACIO LODE
CLAIM GROUP



SECT. 33

SECT 34

SECT. 4

SECT. 3

SCALE: 1" = 2000'

T
17
S

T
13
S

Call Lyall & Grover^{Sin.}

California Bureau of Mines
Ash Peak Publications

Glasses - Temple.

Hole 100' south
of CS 4

(a) 193' ran into
old drift

(1) 150' S of CS 4
45°

(2) 200' S of CS 4

(4) 200 E 2 holes

(5)

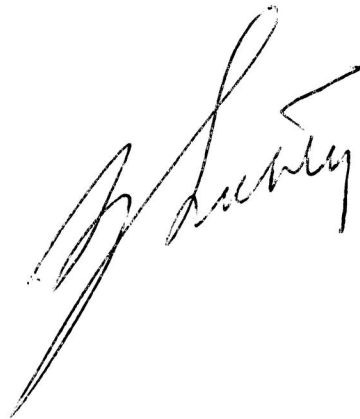
Platoro Mines, Inc.

1802 W. Grant Road
Tucson, Arizona 85705

July 9, 1976

MEMO TO: Paul Eimon
 W. D. Cole
 L. A. Galyen

Enclosed is a sketch of the section at Commonwealth which Bethex is drilling. Hole No. 1 at 143 feet entered an opening underground and lost the drilling water so they discontinued this hole. Hole No. 2 was started 50' south of Hole No. 1 at a 45 degree angle and is drilling now. Neil Jorgensen, their geologist told me they had gone through several "ore" zones in Hole No. 1. He has split the core and is taking the samples to Jacobs Assay office today. I will attempt to keep you up-to-date.



LJL:lh
Enclosure

4400

4350

Legend

Tertiary

10 Post Volcanic Sediments

9 Equigranular Andesite

4300

4250

8 Quartz Vein

7 Porphyritic Dacite

4200

6 Upper Andesite

5 Middle Andesite

4150

4 Lower Andesite

3 Rhyolitic Tuff-Breccia

4100

2 Bottom Andesite

Cretaceous

1 Bisbee Group

4050

4000

Ag oz./Ton

0-0.99

1.00-1.99

2.00-2.99

+ 3.00

3950

PRELIMINARY COPY ONLY
DATE: NOV 17 1976

3900

3850

97+50 N

TITLE - COMMONWEALTH PROJECT
GEOLOGICAL DRILL HOLE SECTION (M)

ethlehem
opper
CORPORATION

VANCOUVER

BRITISH COLUMBIA

CP-76-14

SECTION (113+6)

52

*
P-76-12

*
P-76-16

N.D.	.006
N.D.	.012
N.D.	.012
N.D.	.053
.015	.140
N.D.	.169
N.D.	.070
N.D.	.018
.0025	.125
Tr.	.175
.0025	.15
Tr.	.075
.0025	.10
.0025	.05

conglomerate
unconsolidated zone
sandstone

N.D.	.012
N.D.	.012
N.D.	.012
N.D.	.006
N.D.	.064
N.D.	.08
.03	.27
.025	.22
Tr.	.206
.025	.150
.025	.075
.005	.10
.025	.10
.005	.125

Tr.	.067
Tr.	.05
.005	.125
Tr.	.10
.005	.125
.0025	.05
Tr.	.05

conglomerate

Tr.	.05
.015	.125
Tr.	.125
.005	.075
.005	.075
.025	.075
.005	.075
.005	.05
.015	.075
.025	.075
Tr.	.175
.025	.175
Tr.	.125
.025	.10
.008	.15
.005	.125

conglomerate
sandstone
conglomerate

.0025 .15 ^{TOP}

Tr	.15
.0025	.78
Tr	.15
.0025	.20
.0025	.075
.0025	.10
Tr	.10
.005	.125
.0025	.15
.0025	.10
Tr	.05
.0025	.10
.0025	.10
Tr	.05
.0025	.125
.005	.10
Tr	.075
.0025	4 .125
Tr	.05
.0025	.15
.005	.125
.0025	.075
Tr	.05
.005	.075
.0025	.10
Tr	.125
.005	.125
.005	.075
.01	.25
.01	.225
.008	.075
.01	.075
.01	.075
.005	.075
.005	.10
Tr	3 .075
.008	.075
.008	.075
.0025	.075
.005	.10
.008	.10
.008	.15
.008	.075

P-76-13

Legend

Tertiary

- 10 Post Volcanic Sediments
 - 9 Equigranular Andesite
 - 8 Quartz Vein
 - 7 Porphyritic Dacite
 - 6 Upper Andesite
 - 5 Middle Andesite
 - 4 Lower Andesite
 - 3 Rhyolitic Tuff - Breccia
 - 2 Bottom Andesite
- Cretaceous
- 1 Bisbee Group

4

450

445

440

435

430

425

420

415

410

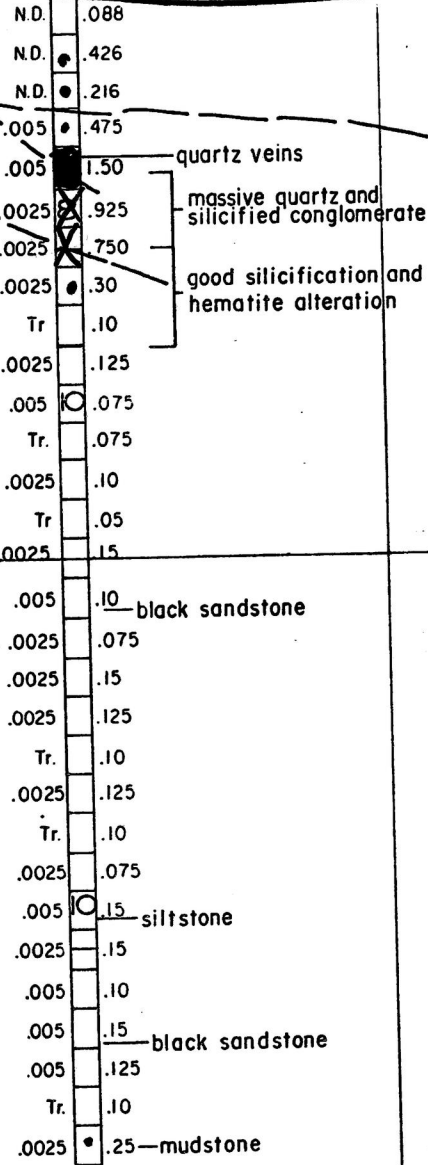
405

400

*
P-76-15

North
Vein

OVERBURDEN

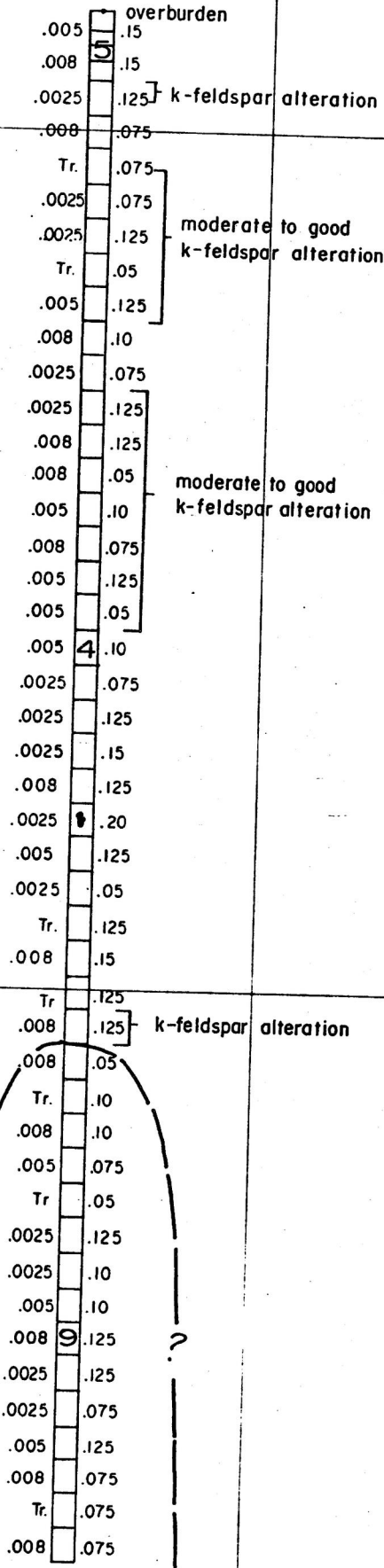


5

*
P-76-14
16' E. OF SECT.

4

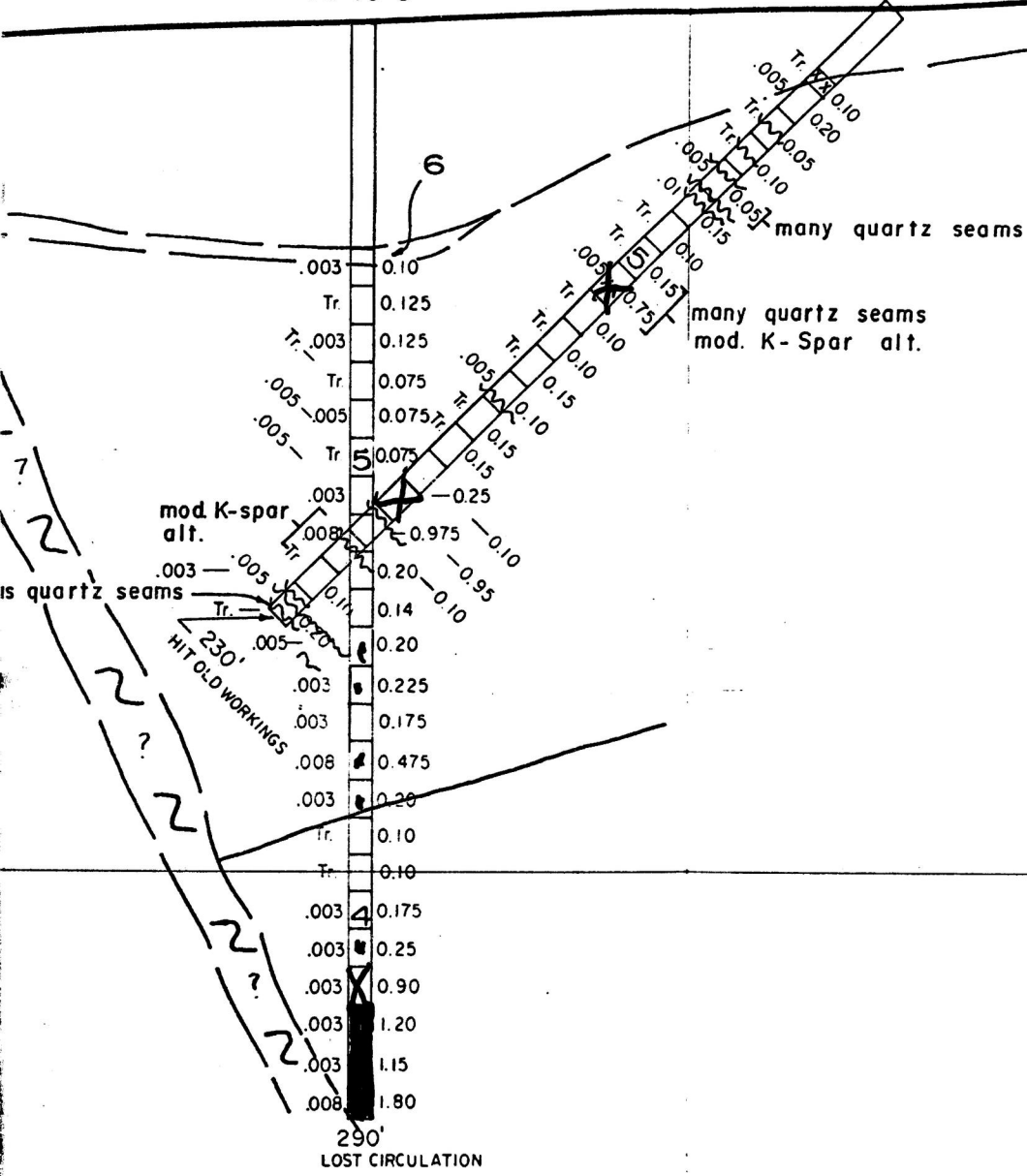
4



6

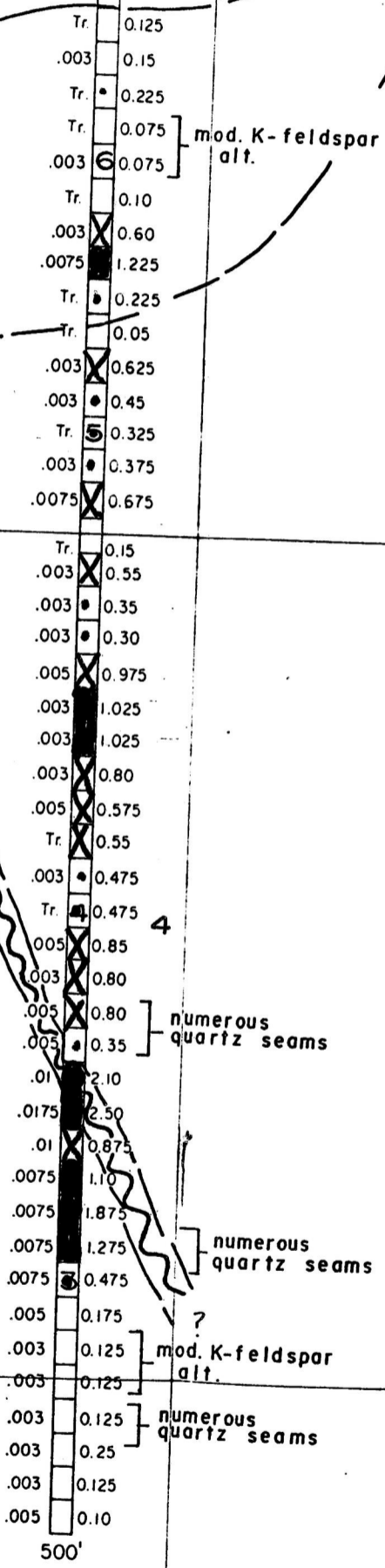
(26' E. of Sect.)
PC-76-8

DD-76-3



*
P-76-10

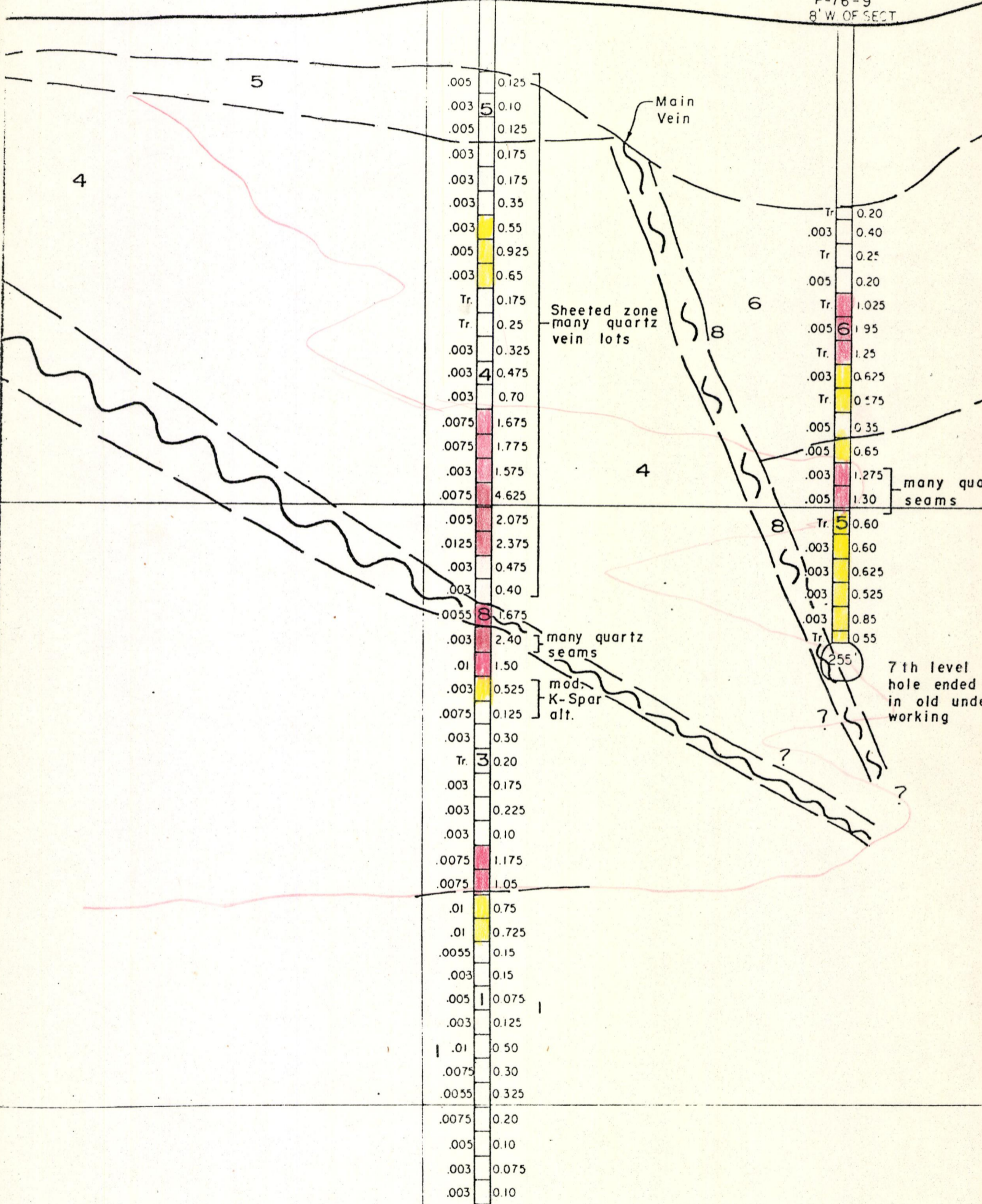
Main Vein



8

*
P-76-11
15' E. OF SECT.

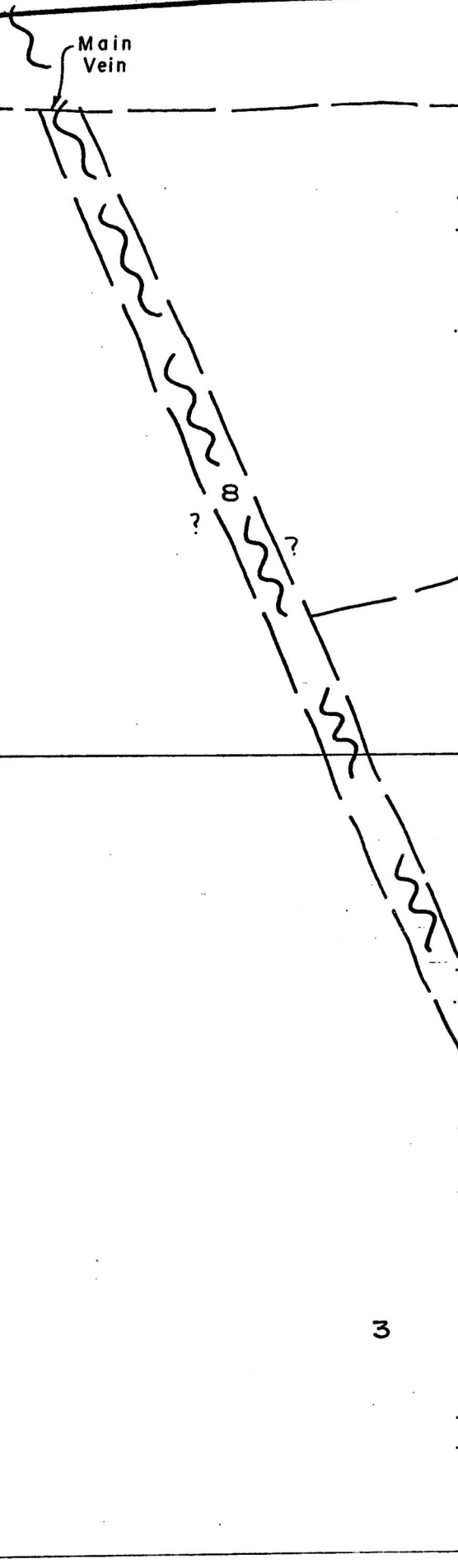
*
P-76-9
8' W OF SECT.



500'

9

Main Vein



Tr.	0.05
Tr.	0.10
.005	0.25
.005	0.55
Tr.	1.35
.01	1.50
.005	1.10
.01	2.55
.01	2.10
Tr.	1.60
Tr.	1.10
Tr.	0.60
.005	0.90
.01	1.55
Tr.	0.70
Tr.	0.30
Tr.	0.70
.005	0.95
Tr.	0.60
Tr.	1.15
.01	1.35
.01	1.70
Tr.	0.45
Tr.	0.45
.01	1.45
.005	1.40
.005	1.20
.005	1.70
.01	1.50
.01	1.60
Tr.	3.40
.005	4.00
.01	2.35
.015	2.15
.01	1.15
.015	1.25
.01	0.95
.015	1.30
.01	2.15
.015	3.05
.015	1.50
.015	0.75
.01	0.10
.01	0.15
.01	0.15
Tr.	0.10

numerous quartz seams

mod. K-Spar Alt.

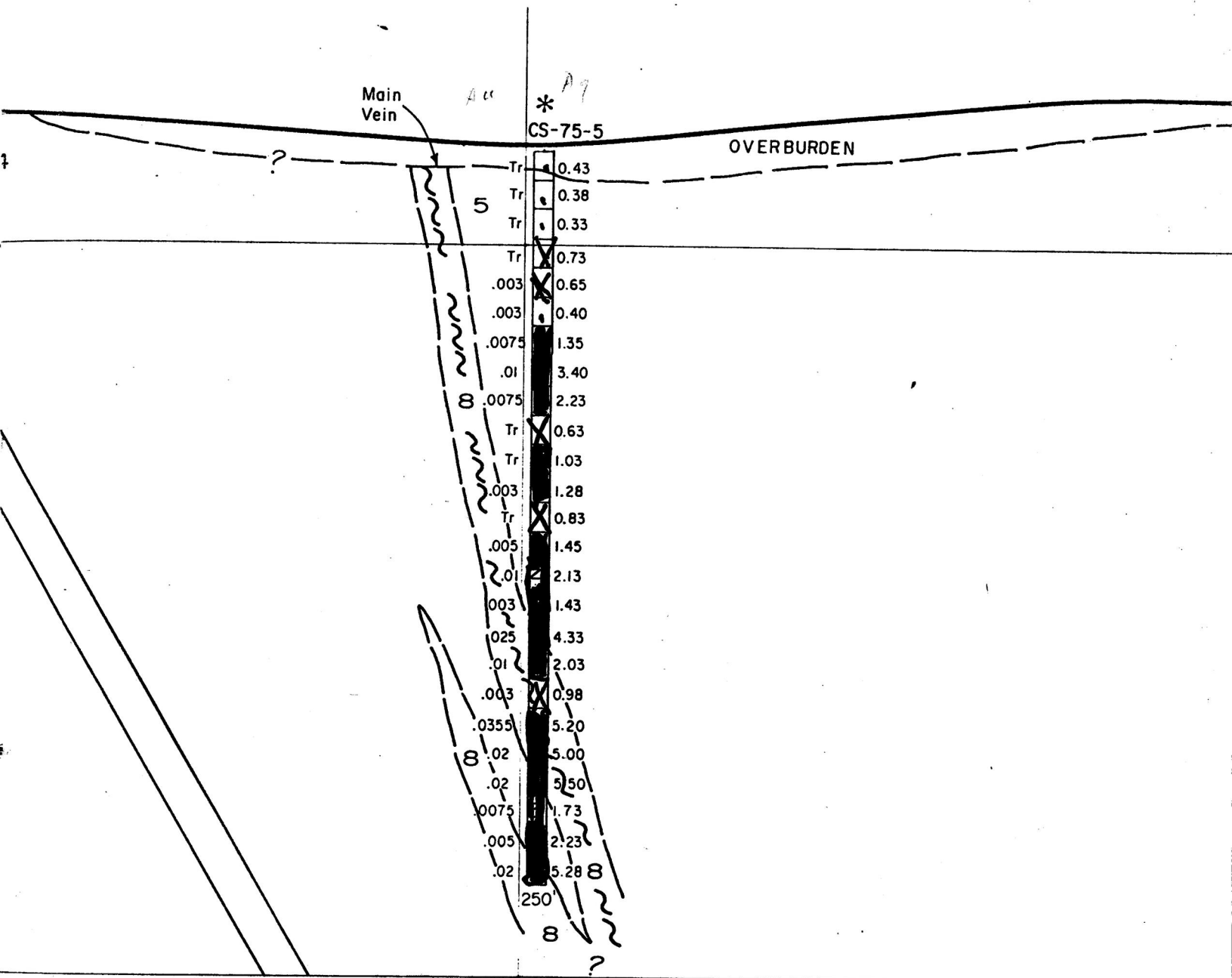
numerous quartz seams mod. K-Spar Alt.

numerous quartz seams

strong silicification hematite, and K-feldspar alteration numerous quartz

3

500'



(11)

Main Vein

Glory Hole Vein

*
CS-75-3

Smith Vein

.0075	X	0.775
Tr.	X	0.725
.003	X	0.625
.003	X	0.525
.003	X	0.675
.003	X	1.20
.003	X	1.975
.0075	X	2.875
.003	X	1.875
.01	X	4.925
.0055	X	5.15
.005	X	2.30
.003	X	1.575
Tr.	X	1.55
.003	X	2.275
.0125	X	3.675
.015	X	4.725
.015	X	2.875
.005	X	2.95
.015	X	3.425
.01	X	3.725
.0125	X	2.95
.0075	X	1.85
.015	X	3.375
.015	X	4.20
.0105	X	3.525
.003	X	2.375

270'

STONE -

SELECTED Ag ASSAYS

DRILL HOLE NO.	FOOTAGE FROM - TO	ASSAYS Ag Oz./T
CS-1	60 - 115	6.66
	185 - 205	2.05
	205 - 255	3.40
	255 - 270	2.50
CS-2	40 - 50	1.00
	70 - 80	1.00
	110 - 120	1.20
CS-3	55 - 90	2.20
	90 - 115	4.63
	115 - 155	1.85
	155 - 215	3.64
	215 - 230	2.08
	230 - 260	3.68
CS-4	260 - 270	2.37
	65 - 105	2.48
	105 - 135	1.60
	135 - 185	3.28
	185 - 200	1.20

DRILL HOLE NO.	FOOTAGE FROM - TO	ASSAYS Ag Oz./T
CS-5	65 - 85	2.91
	85 - 160	1.29
	160 - 180	3.17
	180 - 195	1.13
	195 - 215	6.82
	215 - 240	1.71
	240 - 250	5.17
P-76-6	110 - 130	1.20
P-76-7	80 - 110	1.32
	110 - 130	2.33
	130 - 150	1.35
	230 - 260	1.40
	280 - 340	1.48
	340 - 360	3.75
	360 - 380	2.25
P-76-8	388 - 400	1.20
	410 - 450	2.23
	255 - 285	1.19
	285 - 290	2.25

DRILL HOLE NO.	FOOTAGE FROM - TO	ASSAYS Ag Oz./T
P-76-9	115 - 135	2.75
	180 - 200	1.29
P-76-10	115 - 130	1.20
	245 - 255	1.00
	325 - 345	1.00
	365 - 370	1.70
	370 - 385	2.50
	390 - 420	1.48
P-76-11	165 - 200	1.61
	205 - 210	8.55
	210 - 230	2.23
	250 - 280	1.83
	355 - 365	1.68
P-76-16	40 - 55	1.35

B

C

13

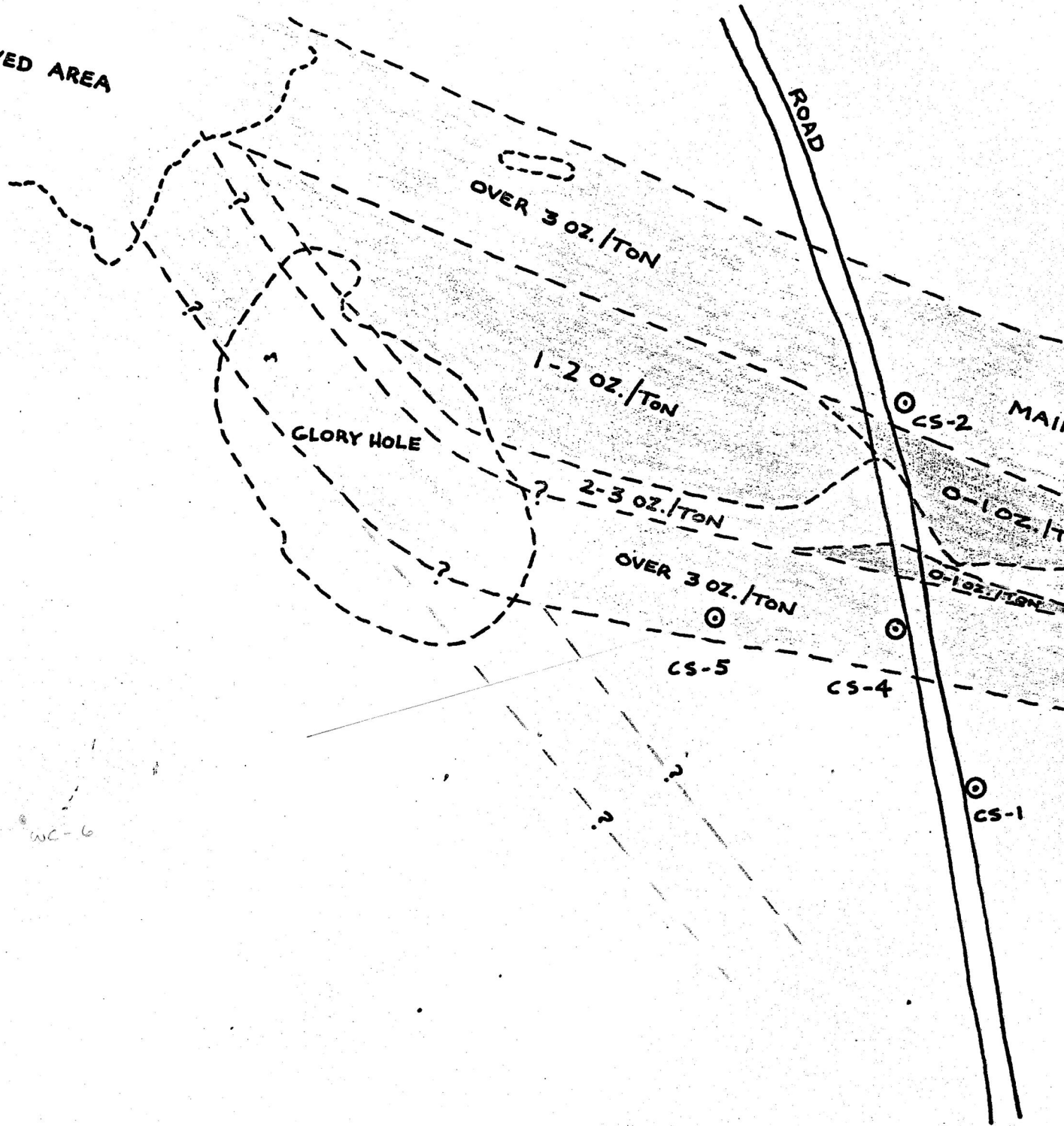
Y

D SHAFT



CAVED AREA

ROAD

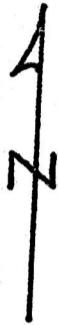


COMMONWEALTH MINE

PROJECTION OF VEINS TO SURFACE

1" = 50'

14



PROJECTED STRIKE OF KNOX FAULT (SMITH)

MAIN VEIN OVER 3 oz./TON

1-2 oz./TON

GLORY HOLE VEIN

TARGET

CS-3

SHAFT

AG.

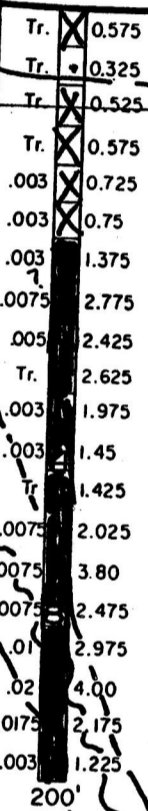
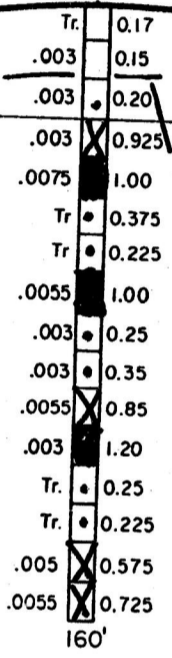
	0-1 oz./TON
	1-2 oz./TON
	2-3 oz./TON
	OVER 3 oz./TON

107 +50N

* CS-75-2

Main Vein

* CS-75-4



4

5

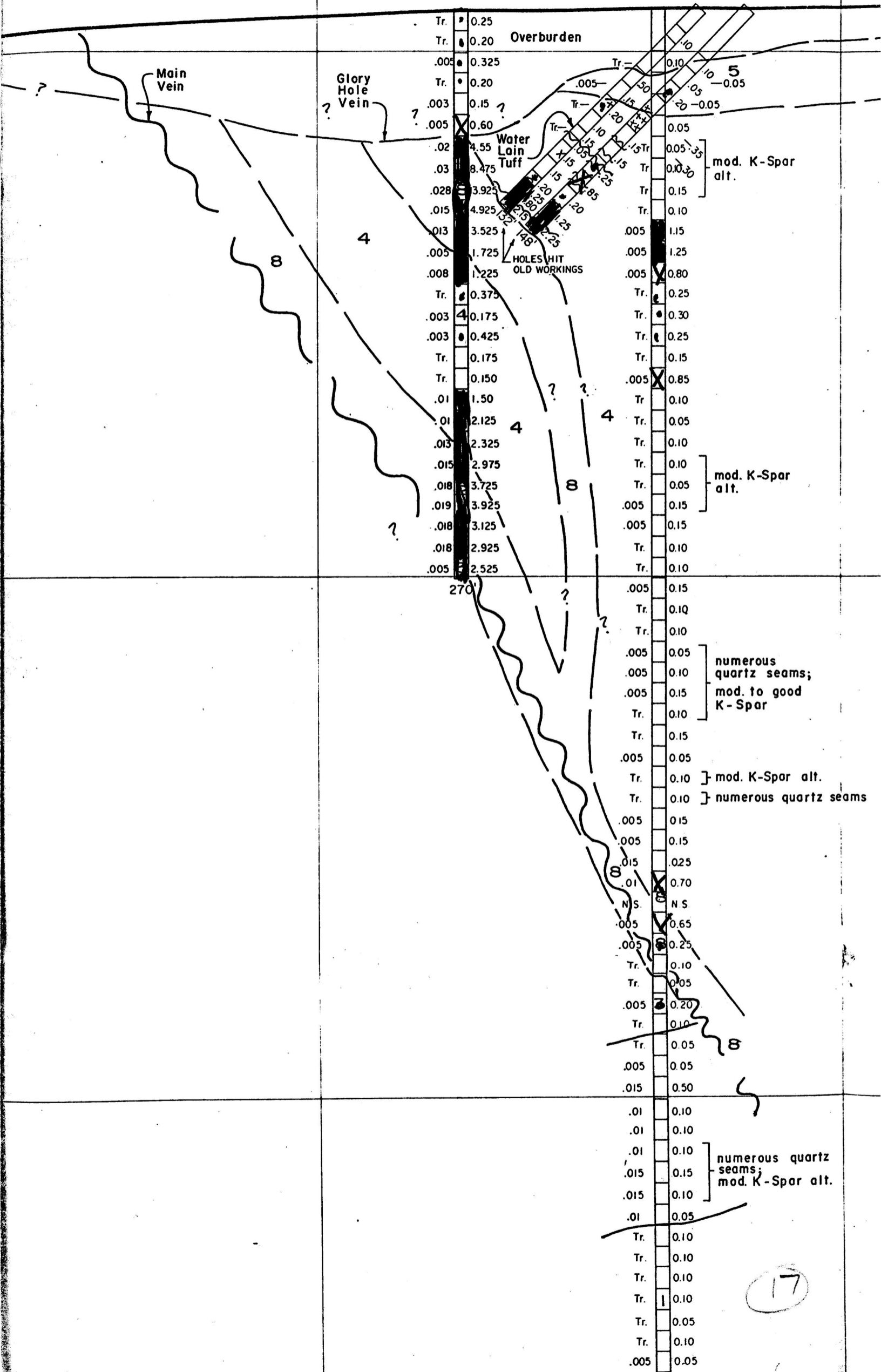
8

3

16

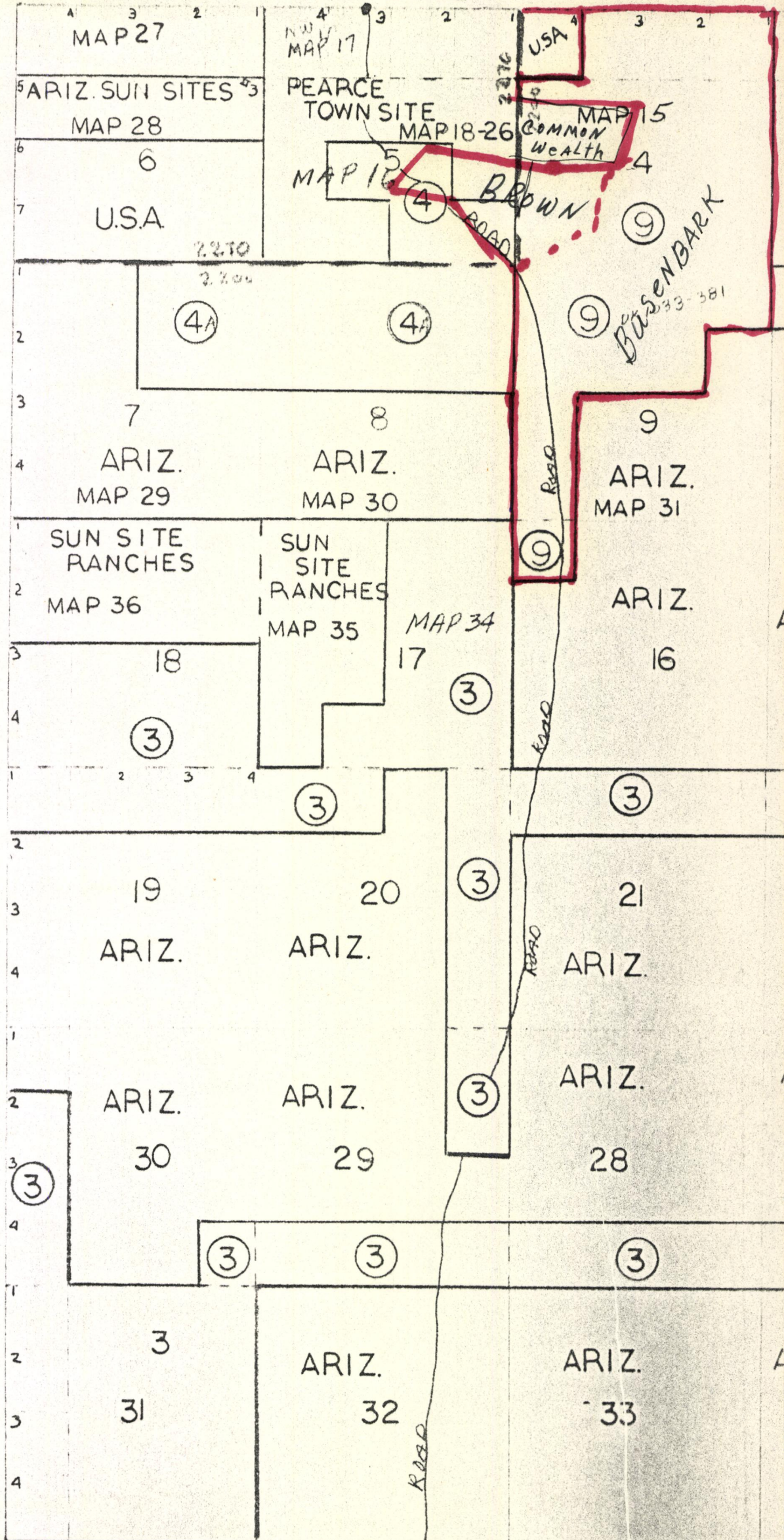
*
CS-75-1

P-76-6 DD-76-1 DD-76-2



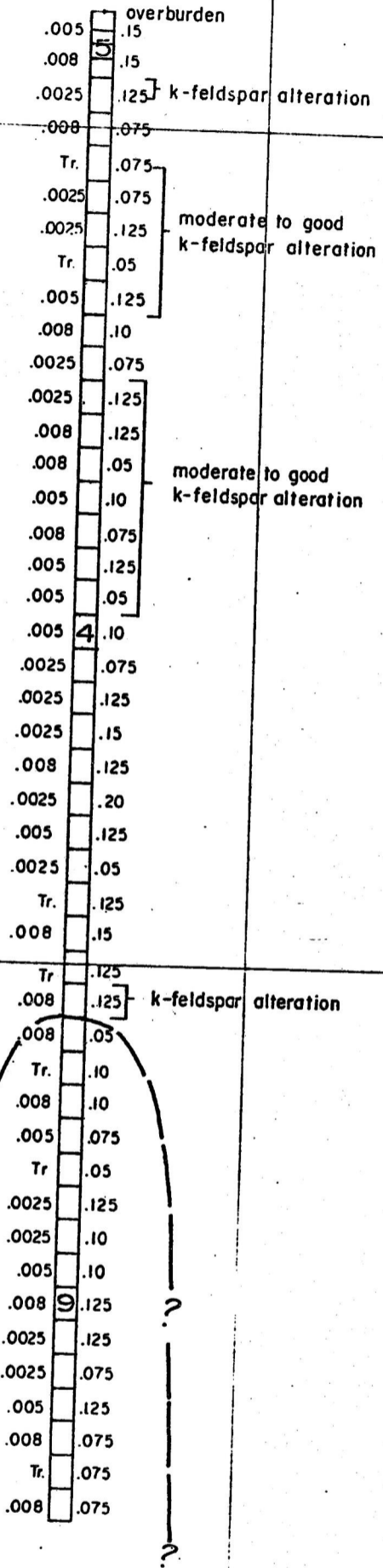
17

PEARCE



*
P-76-14
16' E. OF SECT

4



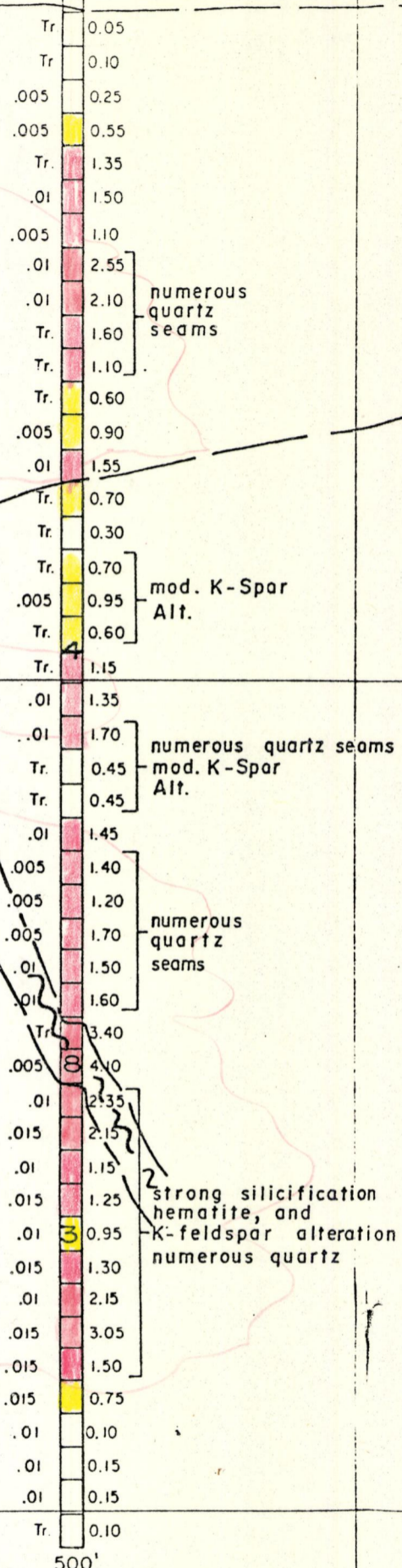
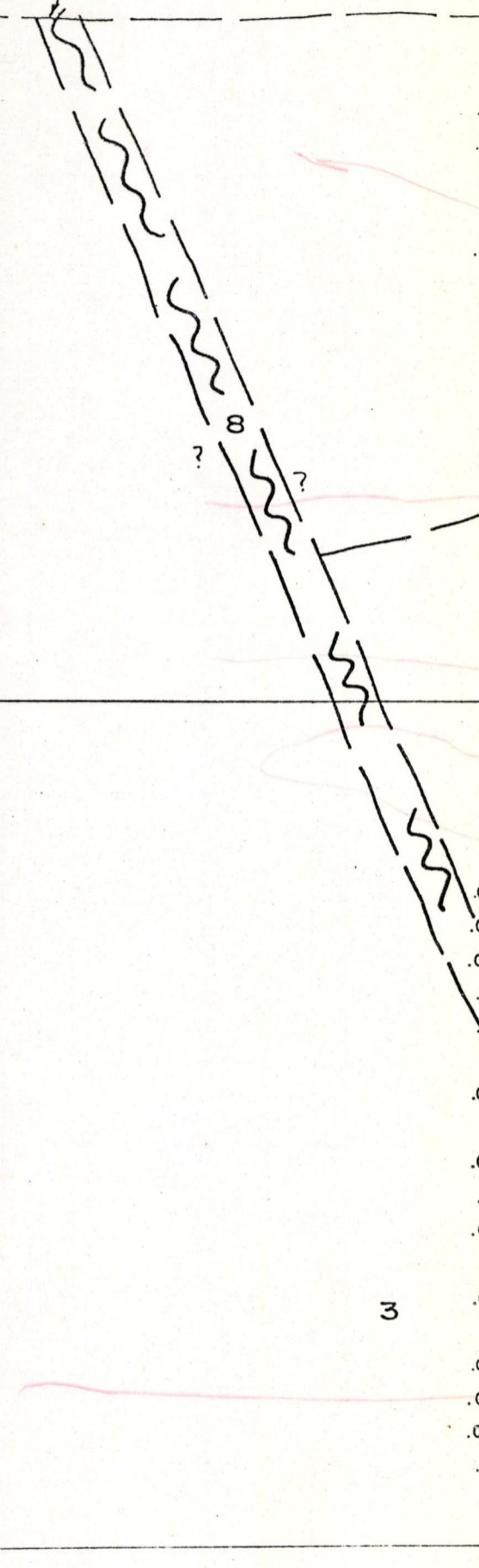
*
P-76-12

*
P-76-16

N D	.006
N.D.	.012
N D	.012
N.D.	.053
.015	.140
N.D.	.169
N.D.	.070
N.D.	.018
.0025	.125 conglomerate
Tr.	.175
.0025	.15 unconsolidated zone
Tr.	.075
.0025	.10 sandstone
.0025	.05
Tr.	.067
Tr.	.05
.005	.125
Tr.	.10 conglomerate
.005	.125
.0025	.05
Tr.	.05

N D	.012
N.D.	.012
N.D.	.012
N.D.	.006
N.D.	.064
N.D.	.08
.03	.27
.025	.22
Tr.	.206
.025	.150
.025	.075
.005	.10
.025	.10
.005	.125
Tr.	.05
.015	.125
Tr.	.125 conglomerate
.005	.075
.005	.075
.025	.075
.005	.075
.005	.05
.015	.075
.025	.075
Tr.	.175
.025	.175 sandstone
Tr.	.125
.025	.10
.008	.15 conglomerate
.005	.125

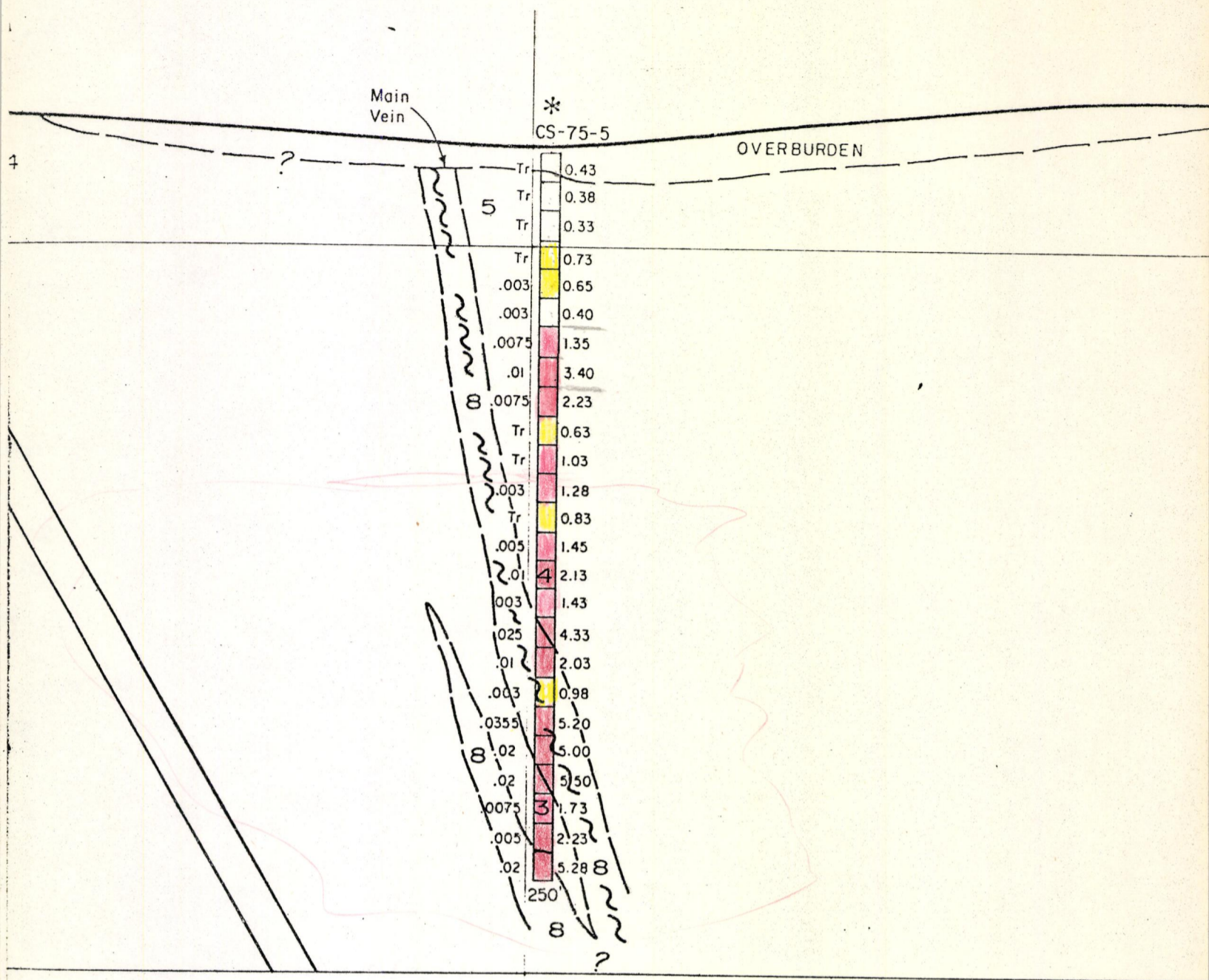
Main Vein



3

500'

22

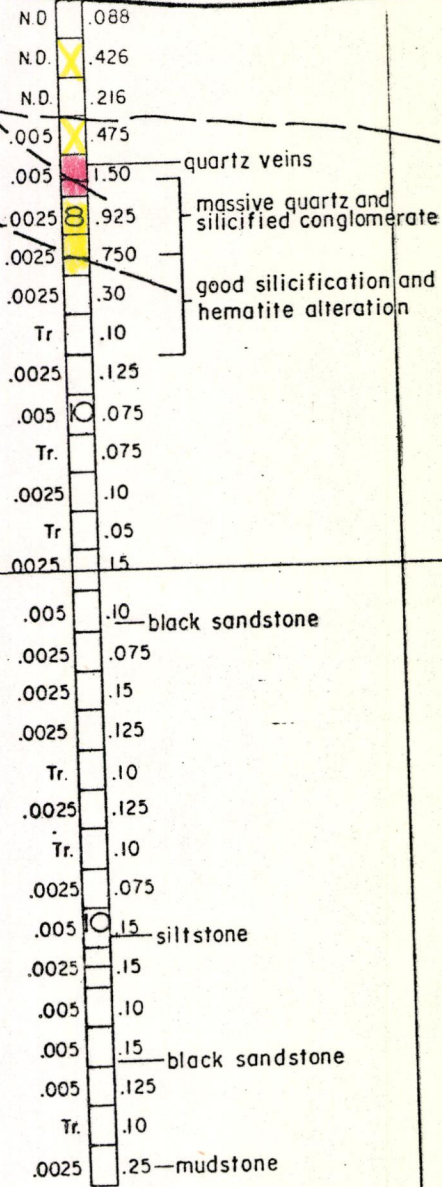


23

*
P-76-15

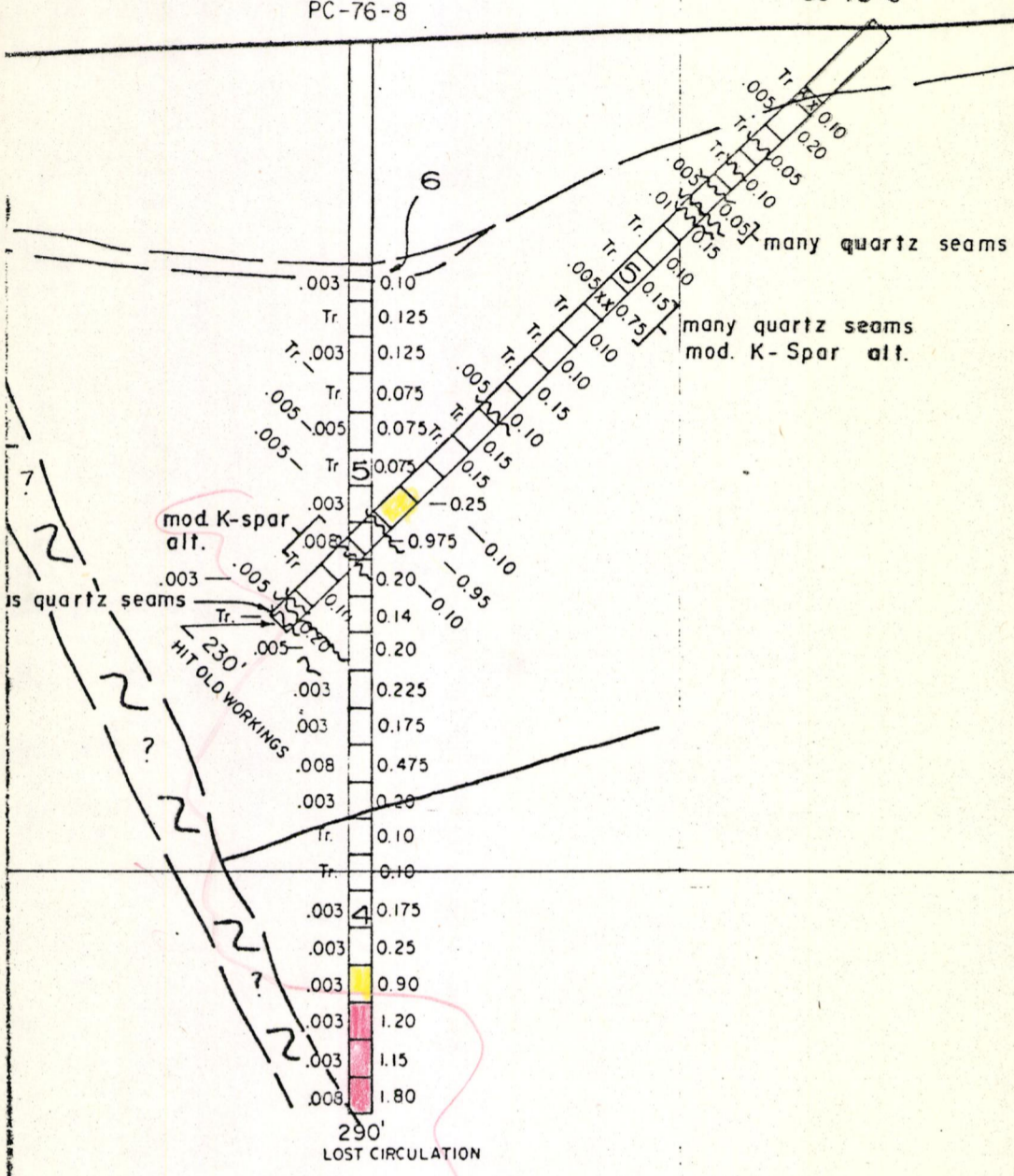
North
Vein

OVERBURDEN



(26' E. of Sect.)
PC-76-8

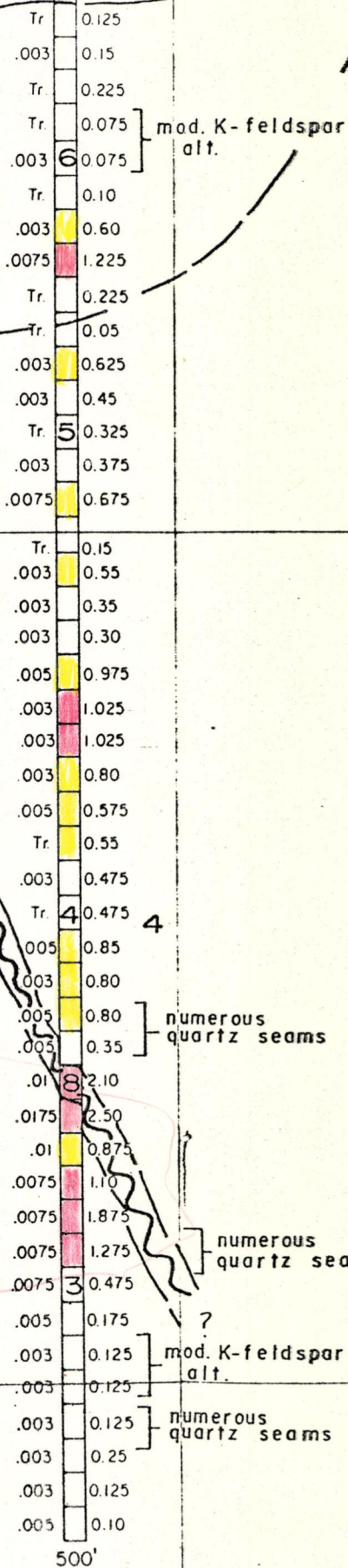
DD-76-3



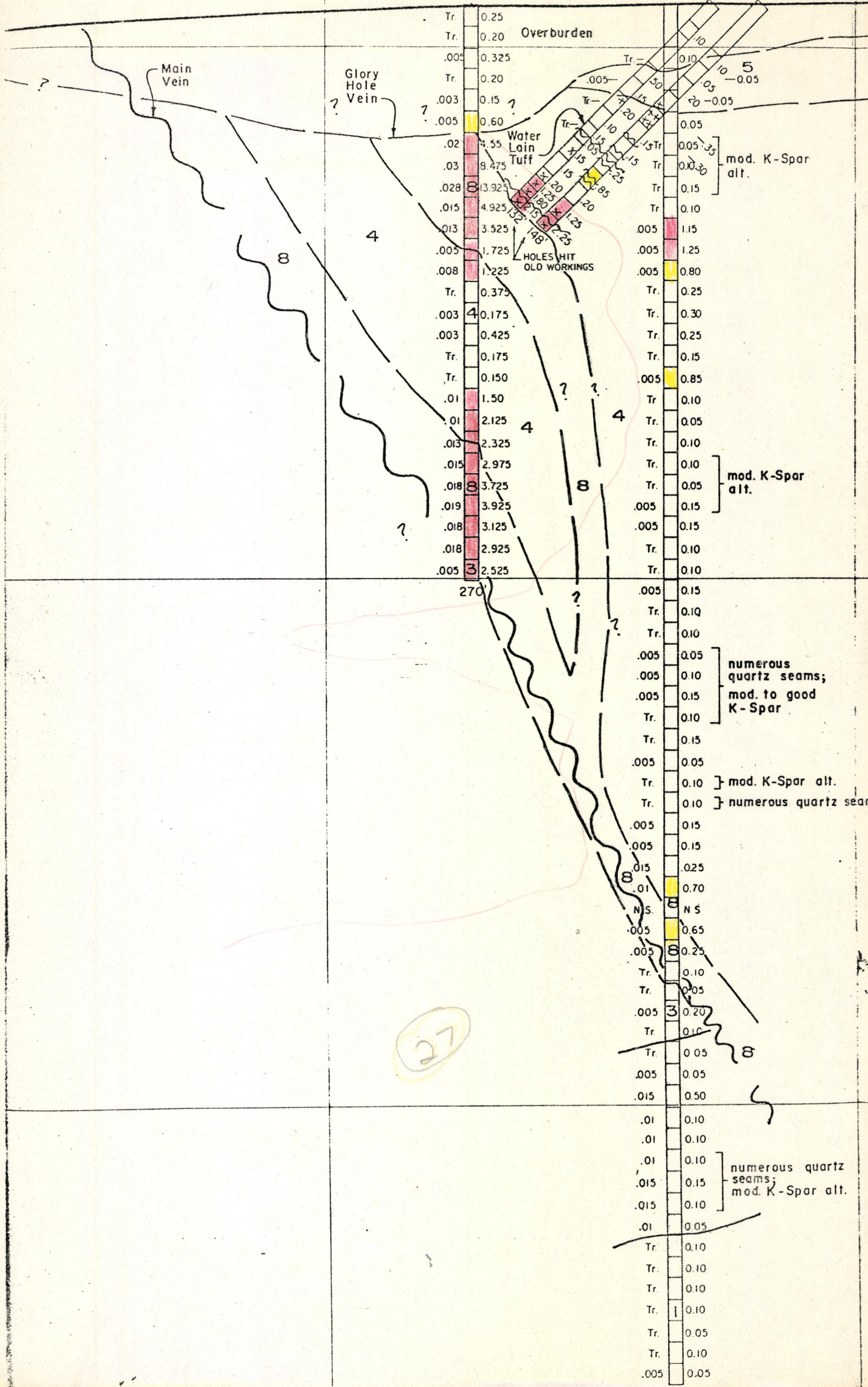
25

*
P-76-10

Main Vein



26



107-50N

* CS-75-2

Main Vein

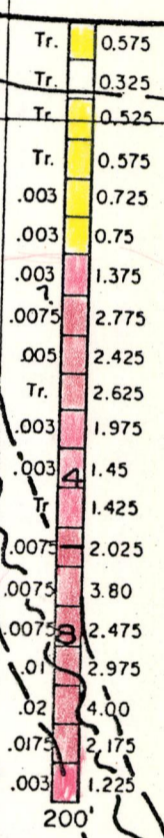
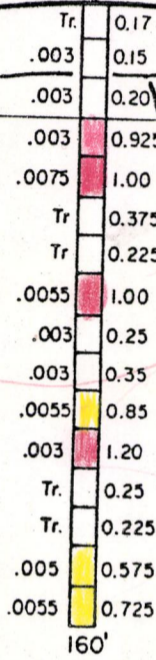
* CS-75-4

?
4

5

8

3

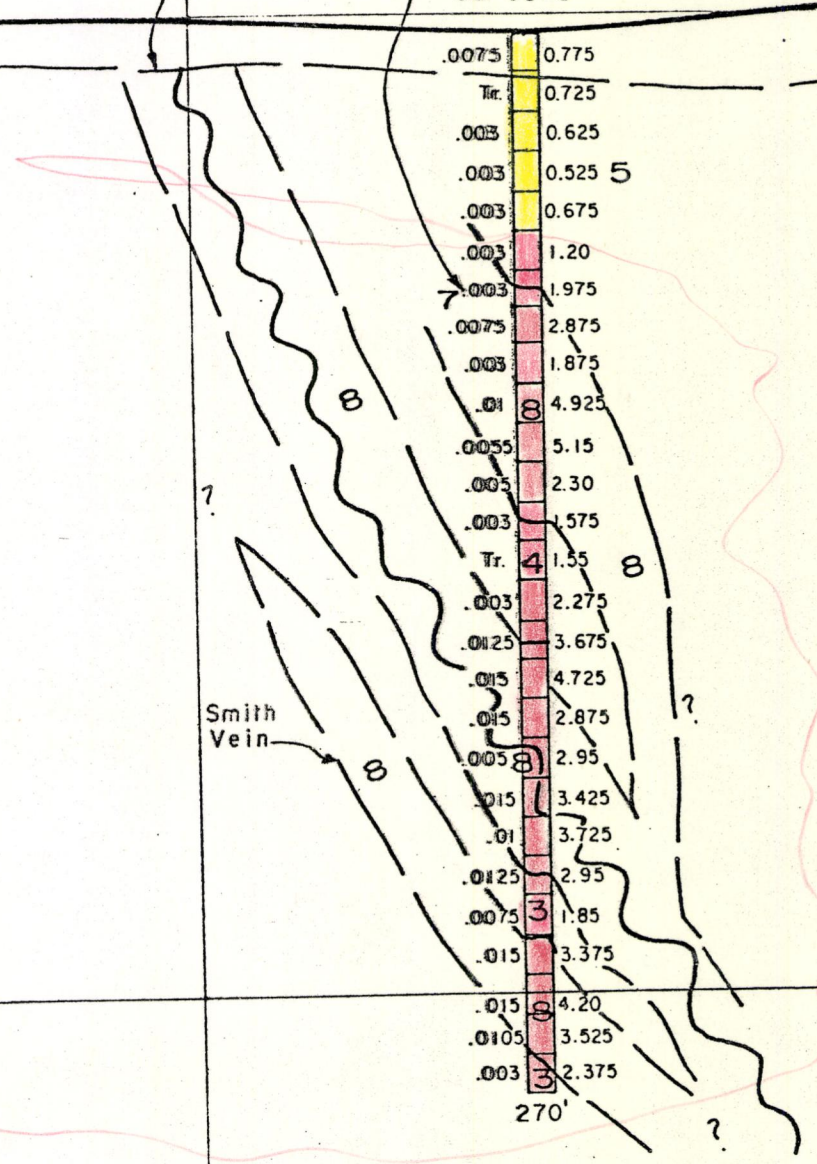


28

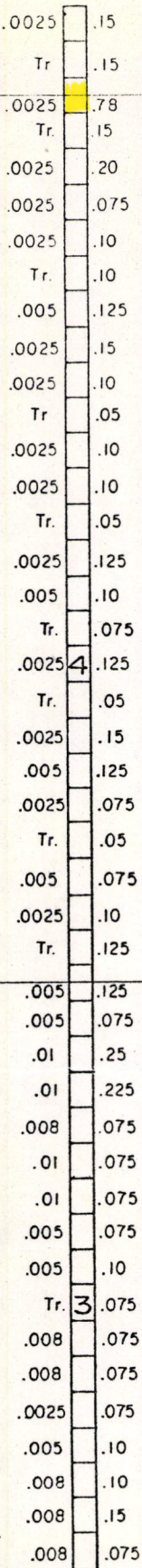
Main Vein

Glory Hole Vein

*
CS-75-3



29



P-76-13

Legend

Tertiary

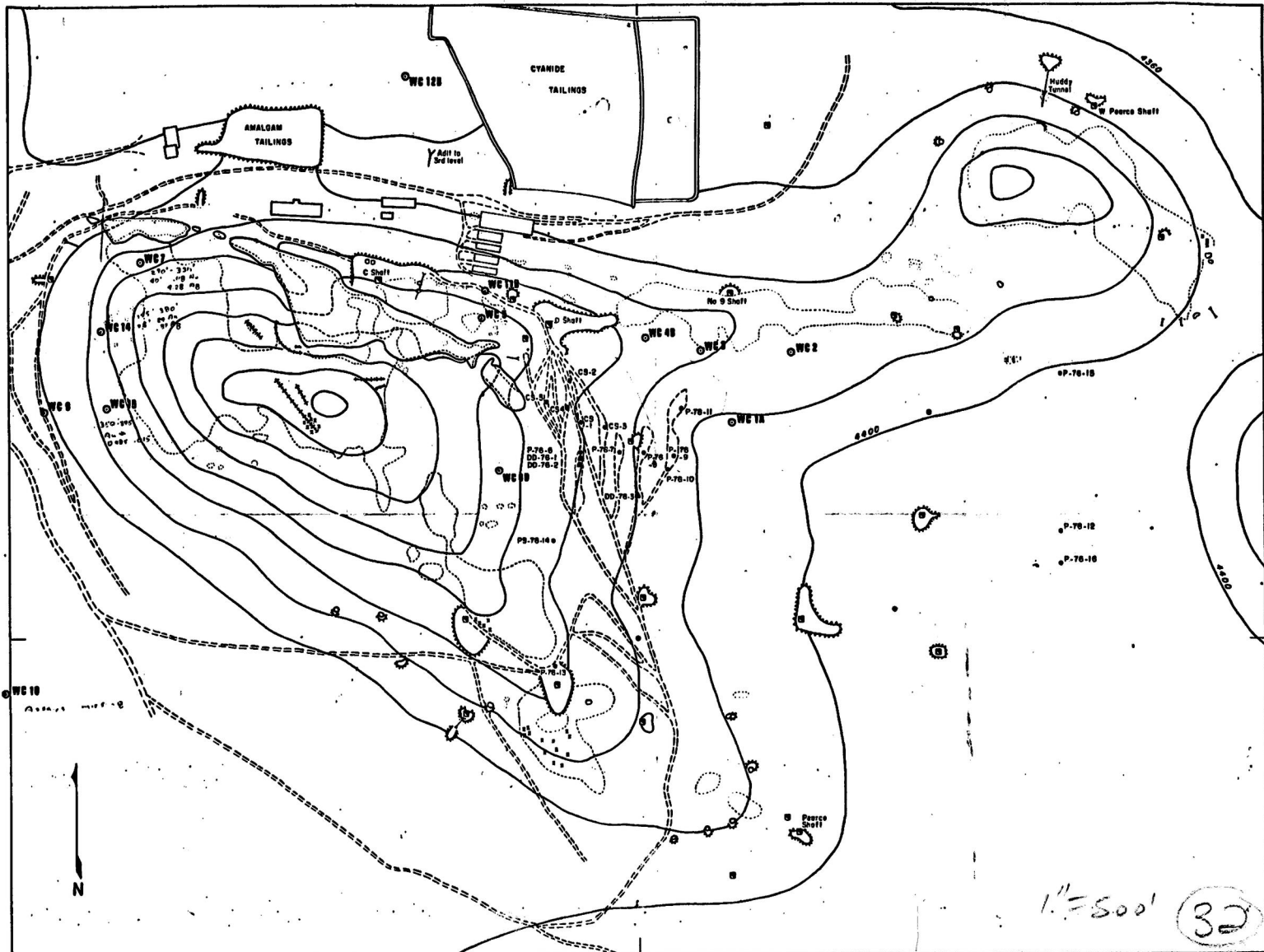
- 10 Post Volcanic Sediments
- 9 Equigranular Andesite
- 8 Quartz Vein
- 7 Porphyritic Dacite
- 6 Upper Andesite
- 5 Middle Andesite
- 4 Lower Andesite
- 3 Rhyolitic Tuff-Breccia
- 2 Bottom Andesite

Cretaceous

- 1 Bisbee Group

> .5 < 1 oz
 1 - 2 oz
 > 2 oz

30



Dump
 Area of Subsidence
 Outcrop
 Adit

Trench
 Substance Fracture
 Shaft
 Road

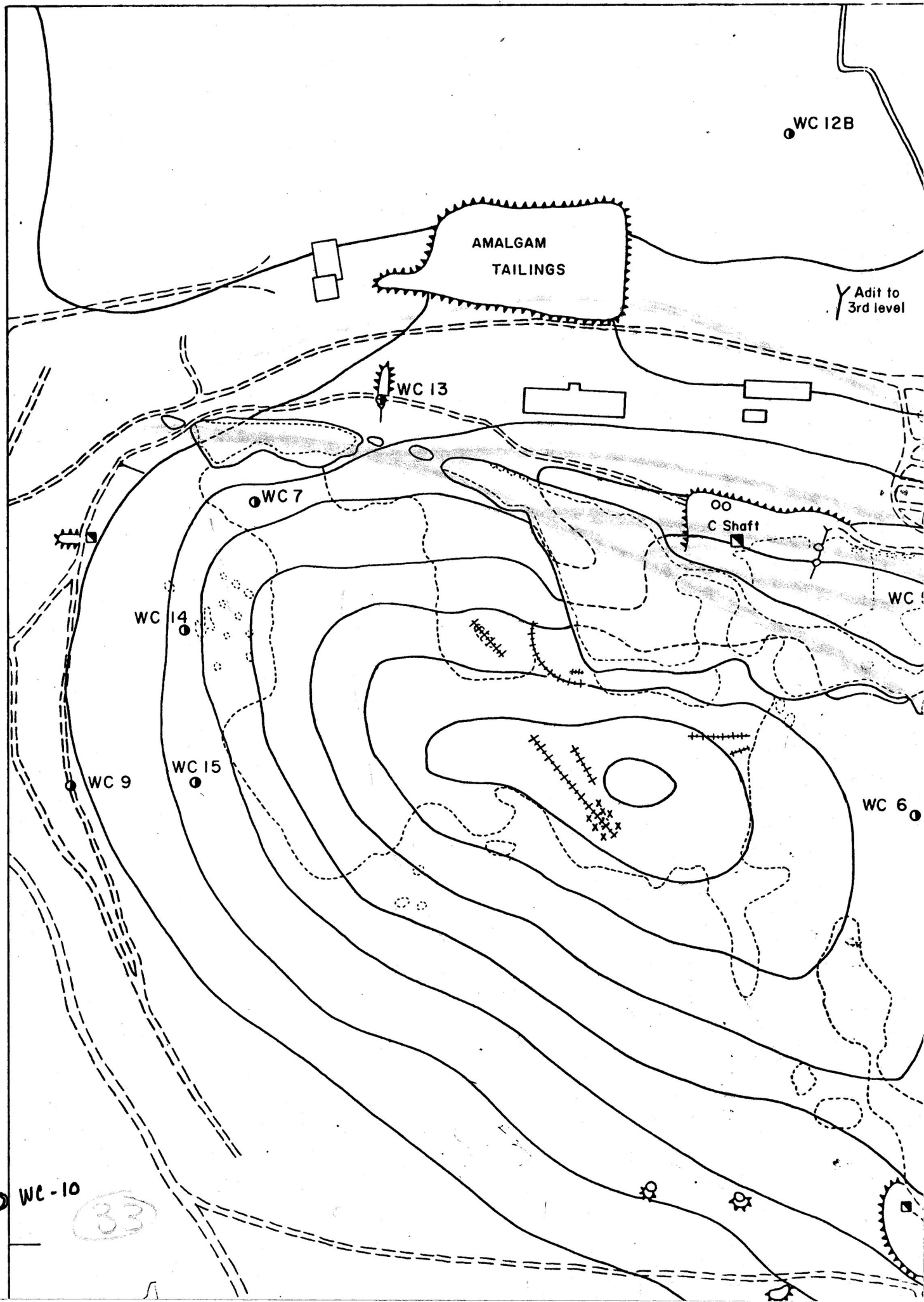
LEGEND

Percussion Drill Hole
 Diamond Drill Hole
 Contour Line
 Prospects

Completed Drill Holes ○

PLAN
 SCALE 1" = 200'
 CONTOUR INTERVAL 40'

WESTERN STATES MINERALS CORPORATION
 COMMONWEALTH PROJECT
 PEARCE, ARIZONA



STONE

SELECTED Ag ASSAYS

DRILL HOLE NO.	FOOTAGE FROM - TO	ASSAYS Ag Oz./T
CS-1	60 - 115	6.66
	185 - 205	2.05
	205 - 255	3.40
	255 - 270	2.50
CS-2	40 - 50	1.00
	70 - 80	1.00
	110 - 120	1.20
CS-3	55 - 90	2.20
	90 - 115	4.63
	115 - 155	1.85
	155 - 215	3.64
	215 - 230	2.08
	230 - 260	3.68
CS-4	260 - 270	2.37
	65 - 105	2.48
	105 - 135	1.60
	135 - 185	3.28
185 - 200	1.20	

DRILL HOLE NO.	FOOTAGE FROM - TO	ASSAYS Ag Oz./T
CS-5	65 - 85	2.91
	85 - 160	1.29
	160 - 180	3.17
	180 - 195	1.13
	195 - 215	6.82
P-76-6	215 - 240	1.71
	240 - 250	5.17
	110 - 130	1.20
P-76-7	80 - 110	1.32
	110 - 130	2.33
	130 - 150	1.35
	230 - 260	1.40
	280 - 340	1.48
	340 - 360	3.75
P-76-8	360 - 380	2.25
	388 - 400	1.20
	410 - 450	2.23
P-76-8	255 - 285	1.19
	285 - 290	2.25

DRILL HOLE NO.	FOOTAGE FROM - TO	ASSAYS Ag Oz./T
P-76-9	115 - 135	2.75
	180 - 200	1.29
P-76-10	115 - 130	1.20
	245 - 255	1.14
	325 - 345	1.00
	365 - 370	1.70
	370 - 385	2.50
	390 - 420	1.48
P-76-11	165 - 200	1.61
	205 - 210	8.55
	210 - 230	2.23
	250 - 280	1.83
P-76-16	355 - 365	1.68
	40 - 55	1.35

B

C

35

ASTONE

SELECTED Ag ASSAYS

DRILL HOLE NO.	FOOTAGE FROM - TO	ASSAYS Ag Oz./T
CS-1	60 - 115	6.66
	185 - 205	2.05
	205 - 255	3.40
	255 - 270	2.50
CS-2	40 - 50	1.00
	70 - 80	1.00
	110 - 120	1.20
CS-3	55 - 90	2.20
	90 - 115	4.63
	115 - 155	1.85
	155 - 215	3.64
	215 - 230	2.08
	230 - 260	3.68
	260 - 270	2.37
CS-4	65 - 105	2.48
	105 - 135	1.60
	135 - 185	3.28
	185 - 200	1.20

DRILL HOLE NO.	FOOTAGE FROM - TO	ASSAYS Ag Oz./T
CS-5	65 - 85	2.91
	85 - 160	1.29
	160 - 180	3.17
	180 - 195	1.13
	195 - 215	6.82
	215 - 240	1.71
	240 - 250	5.17
P-76-6	110 - 130	1.20
P-76-7	80 - 110	1.32
	110 - 130	2.33
	130 - 150	1.35
	230 - 260	1.40
	280 - 340	1.48
	340 - 360	3.75
	360 - 380	2.25
P-76-8	388 - 400	1.20
	410 - 450	2.23
	255 - 285	1.19
	285 - 290	2.25

DRILL HOLE NO.	FOOTAGE FROM - TO	ASSAYS Ag Oz./T
P-76-9	115 - 135	2.75
	180 - 200	1.29
P-76-10	115 - 130	1.20
	245 - 255	1.08
	325 - 345	1.00
	365 - 370	1.70
	370 - 385	2.50
	390 - 420	1.48
P-76-11	165 - 200	1.61
	205 - 210	8.55
	210 - 230	2.23
	250 - 280	1.83
	355 - 365	1.68
P-76-16	40 - 55	1.35

B

C

37

D-Shaft



CS-2



CS-5



CS-4



CS-1



CS-3



No. 8 Shaft



P-76-6



DD-76-1



DD-76-2



P-76-7



P-76-8



P-76-9



P-76-10



DD-76-3



P-76-11



P-76-14



Commonwealth Extension No. 2 Shaft

Survey Marker

P-76-13



38

STONE

SELECTED Ag ASSAYS

DRILL HOLE NO.	FOOTAGE FROM - TO	ASSAYS Ag Oz./T
CS-1	60 - 115	6.66
	185 - 205	2.05
	205 - 255	3.40
	255 - 270	2.50
CS-2	40 - 50	1.00
	70 - 80	1.00
	110 - 120	1.20
CS-3	55 - 90	2.20
	90 - 115	4.63
	115 - 155	1.85
	155 - 215	3.64
	215 - 230	2.08
	230 - 260	3.68
	260 - 270	2.37
CS-4	65 - 105	2.48
	105 - 135	1.60
	135 - 185	3.28
	185 - 200	1.20

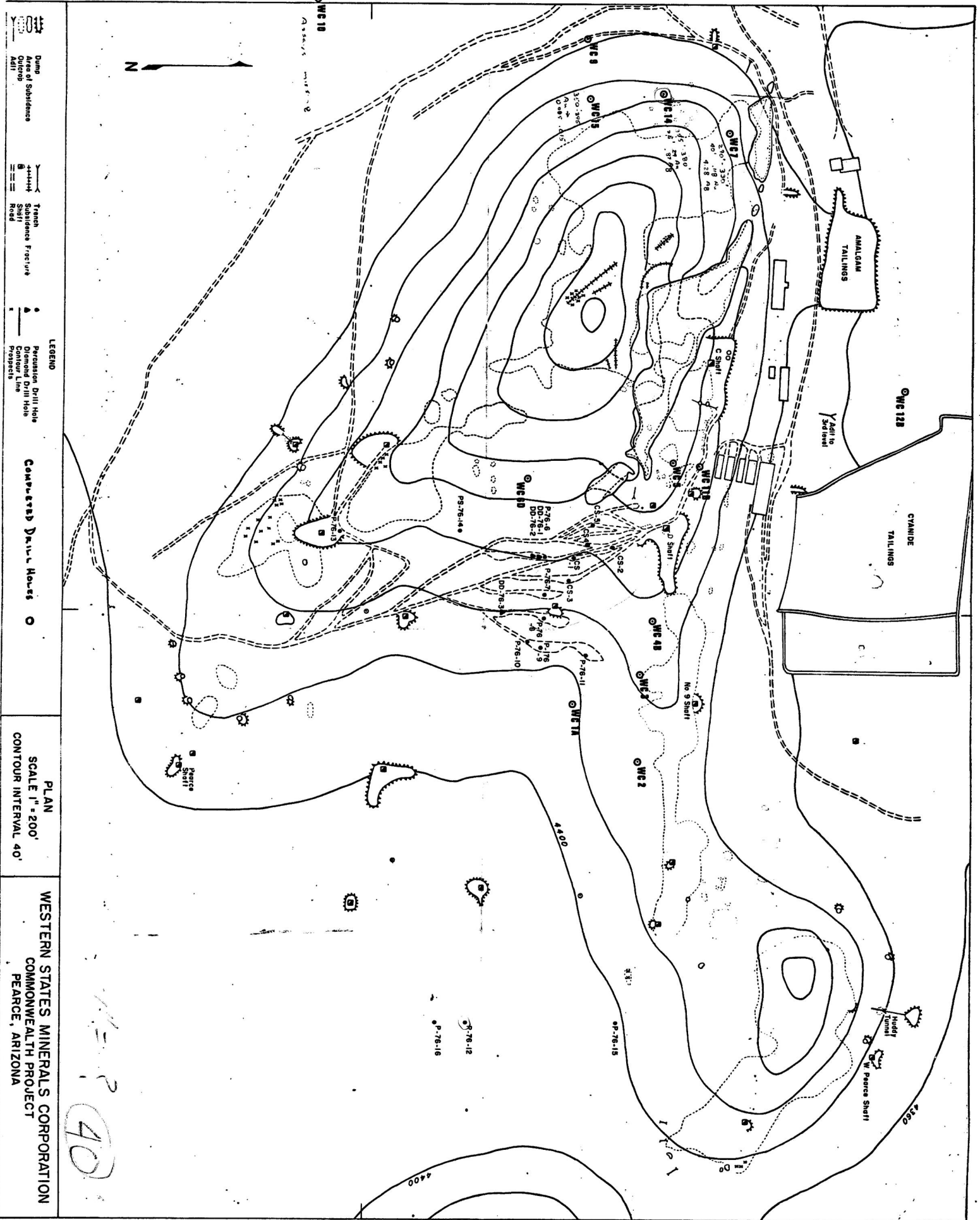
DRILL HOLE NO.	FOOTAGE FROM - TO	ASSAYS Ag Oz./T
CS-5	65 - 85	2.91
	85 - 160	1.29
	160 - 180	3.17
	180 - 195	1.13
	195 - 215	6.82
P-76-6	215 - 240	1.71
	240 - 250	5.17
	110 - 130	1.20
P-76-7	80 - 110	1.32
	110 - 130	2.33
	130 - 150	1.35
	230 - 260	1.40
	280 - 340	1.46
	340 - 360	3.75
P-76-8	360 - 380	2.25
	388 - 400	1.20
	410 - 450	2.23
P-76-8	255 - 285	1.19
	285 - 290	2.25

DRILL HOLE NO.	FOOTAGE FROM - TO	ASSAYS Ag Oz./T
P-76-9	115 - 135	2.75
	180 - 200	1.29
P-76-10	115 - 130	1.20
	245 - 255	1.00
	325 - 345	1.00
	365 - 370	1.70
	370 - 385	2.50
	390 - 420	1.48
P-76-11	165 - 200	1.61
	205 - 210	8.55
	210 - 230	2.23
	250 - 280	1.83
	355 - 365	1.68
P-76-16	40 - 55	1.35

B

C

50



100
 Dump
 Area of Subsidence
 Outcrop
 Adit

Trench
 Subsidence Fracture
 Shaft
 Road

LEGEND
 Percussion Drill Hole
 Diamond Drill Hole
 Contour Line
 Prospect

Consolidated Drill Holes

PLAN
 SCALE 1" = 200'
 CONTOUR INTERVAL 40'

WESTERN STATES MINERALS CORPORATION
 COMMONWEALTH PROJECT
 PEARCE, ARIZONA

40

STONE

SELECTED Ag ASSAYS

DRILL HOLE NO.	FOOTAGE FROM - TO	ASSAYS Ag Oz./T
CS-1	60 - 115	6.66
	185 - 205	2.05
	205 - 255	3.40
	255 - 270	2.50
CS-2	40 - 50	1.00
	70 - 80	1.00
	110 - 120	1.20
CS-3	55 - 90	2.20
	90 - 115	4.63
	115 - 155	1.85
	155 - 215	3.64
	215 - 230	2.08
	230 - 260	3.68
	260 - 270	2.37
CS-4	65 - 105	2.48
	105 - 135	1.60
	135 - 185	3.28
	185 - 200	1.20

DRILL HOLE NO.	FOOTAGE FROM - TO	ASSAYS Ag Oz./T
CS-5	65 - 85	2.91
	85 - 160	1.29
	160 - 180	3.17
	180 - 195	1.13
	195 - 215	6.82
	215 - 240	1.71
	240 - 250	5.17
P-76-6	110 - 130	1.20
P-76-7	80 - 110	1.32
	110 - 130	2.33
	130 - 150	1.35
	230 - 260	1.40
	280 - 340	1.48
	340 - 360	3.75
	360 - 380	2.75
	388 - 400	1.20
	410 - 450	2.23
P-76-8	255 - 285	1.19
	285 - 290	2.25

DRILL HOLE NO.	FOOTAGE FROM - TO	ASSAYS Ag Oz./T
P-76-9	115 - 135	2.75
	180 - 200	1.29
P-76-10	115 - 130	1.20
	245 - 255	1.08
	325 - 345	1.00
	365 - 370	1.70
	370 - 385	2.50
	390 - 420	1.48
P-76-11	165 - 200	1.61
	205 - 210	8.55
	210 - 230	2.23
	250 - 280	1.83
	355 - 365	1.68
P-76-16	40 - 55	1.35

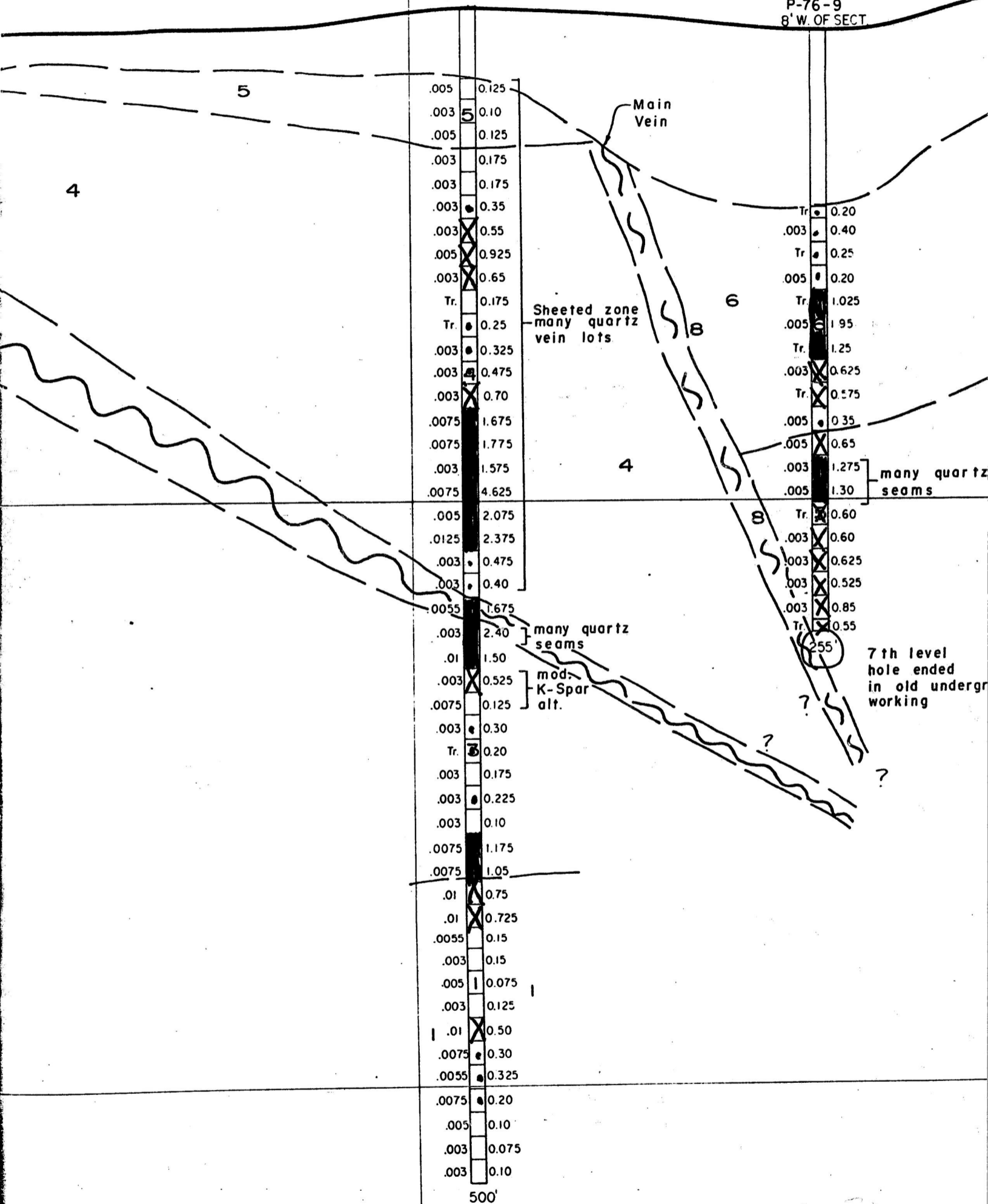
B

C

(13)

*
P-76-11
15' E. OF SECT.

*
P-76-9
8' W. OF SECT.



44

2

3

STEEP SLOPE

84

QUARTZ ON FRACTURES

3

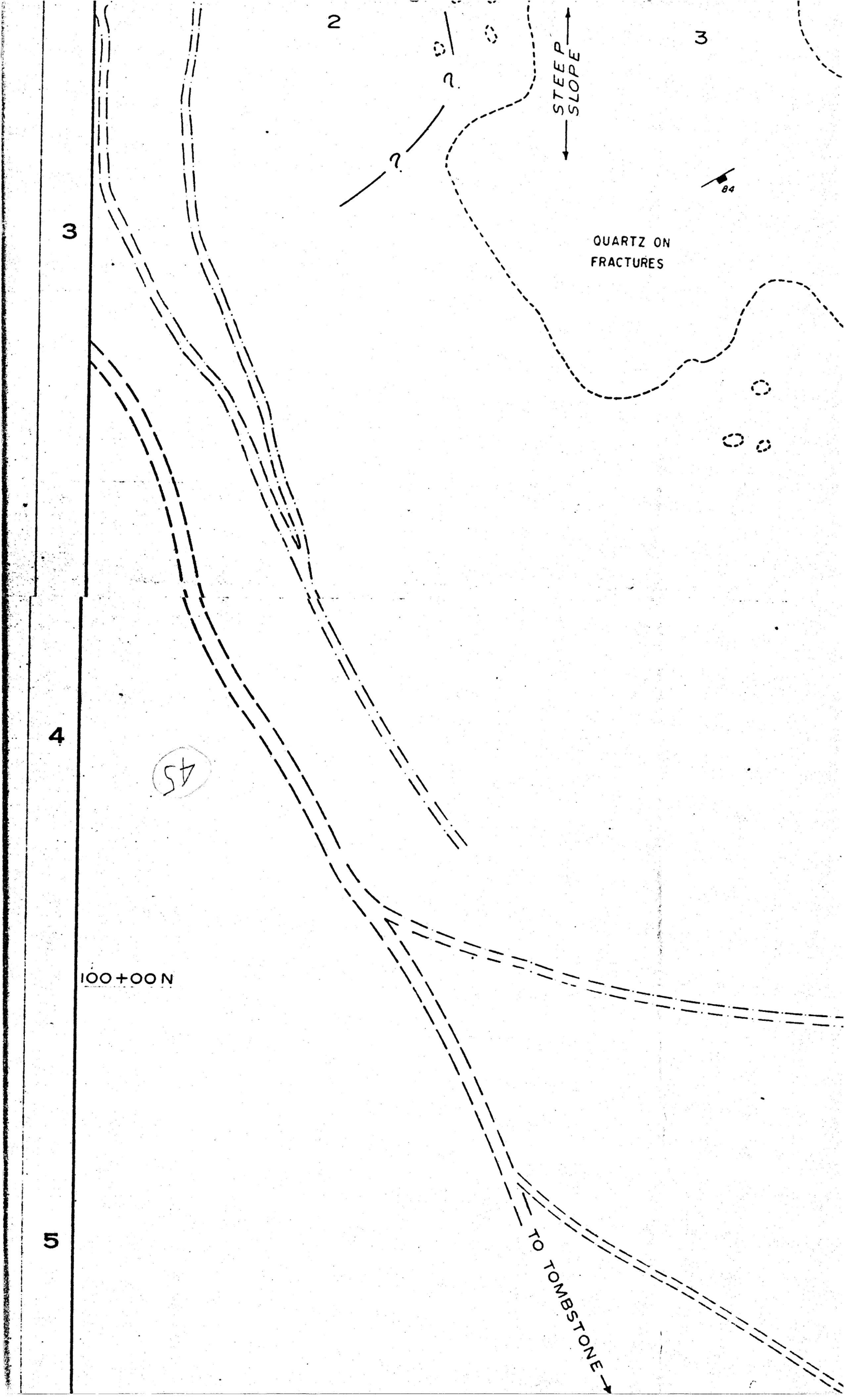
4

45

100+00N

5

TO TOMBSTONE



D-Shaft



CS-2



CS-5



CS-4



CS-1



CS-3



No. 8 Shaft



P-76-6



DD-76-1



DD-76-2



P-76-7



P-76-8



P-76-9



P-76-10



DD-76-3



46

P-76-14



Commonwealth Extension No. 2 Shaft

Survey Marker

P-76-13



COMMONWEALTH
EXTENSION No 2 Shaft



47

B

C

100+00 N

5

TO TOMBSTONE →

6

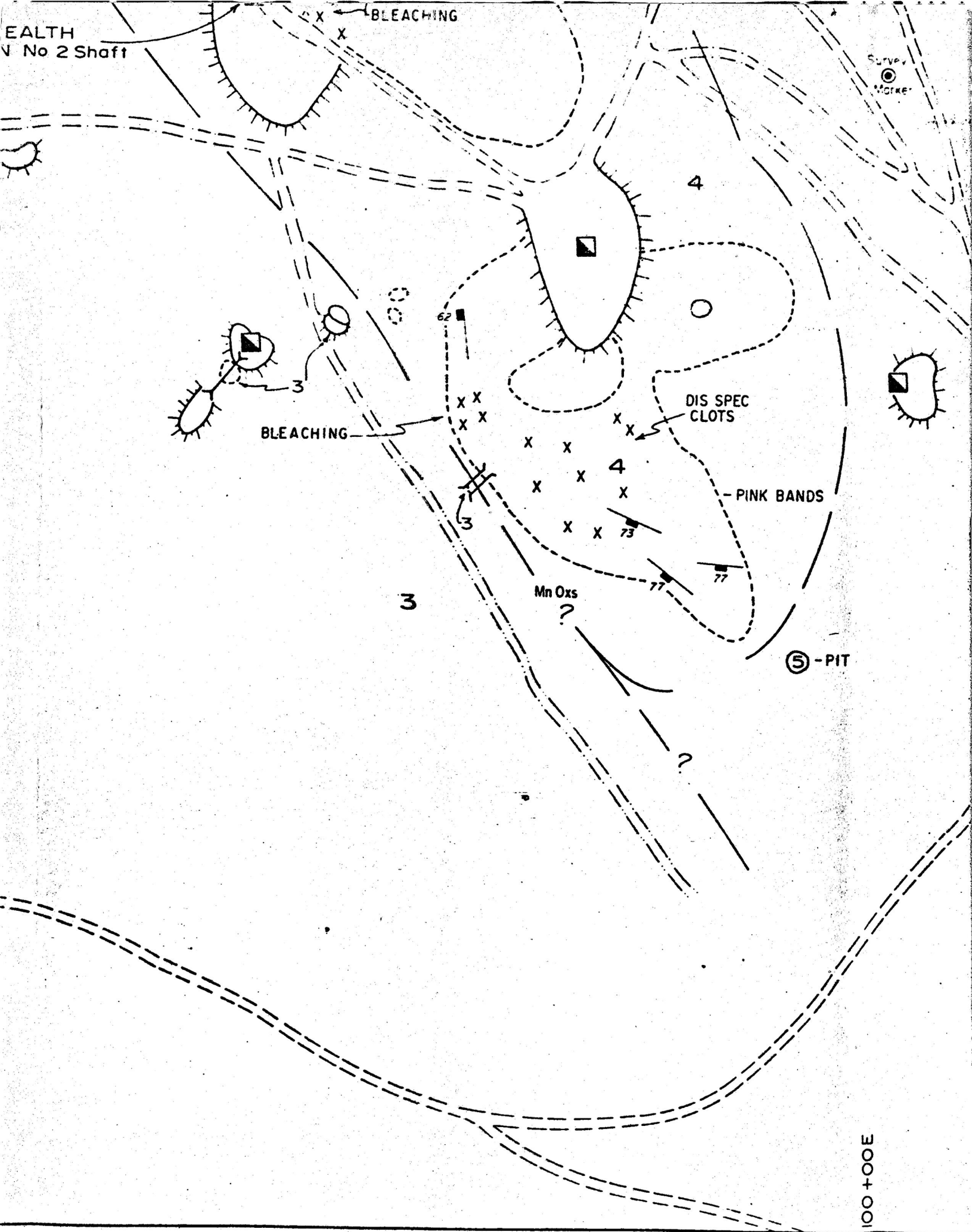
48

A

EALTH
V No 2 Shaft

BLEACHING

Survey
WORK



3

BLEACHING

4

DIS SPEC
CLOTS

PINK BANDS

Mn Oxs
?

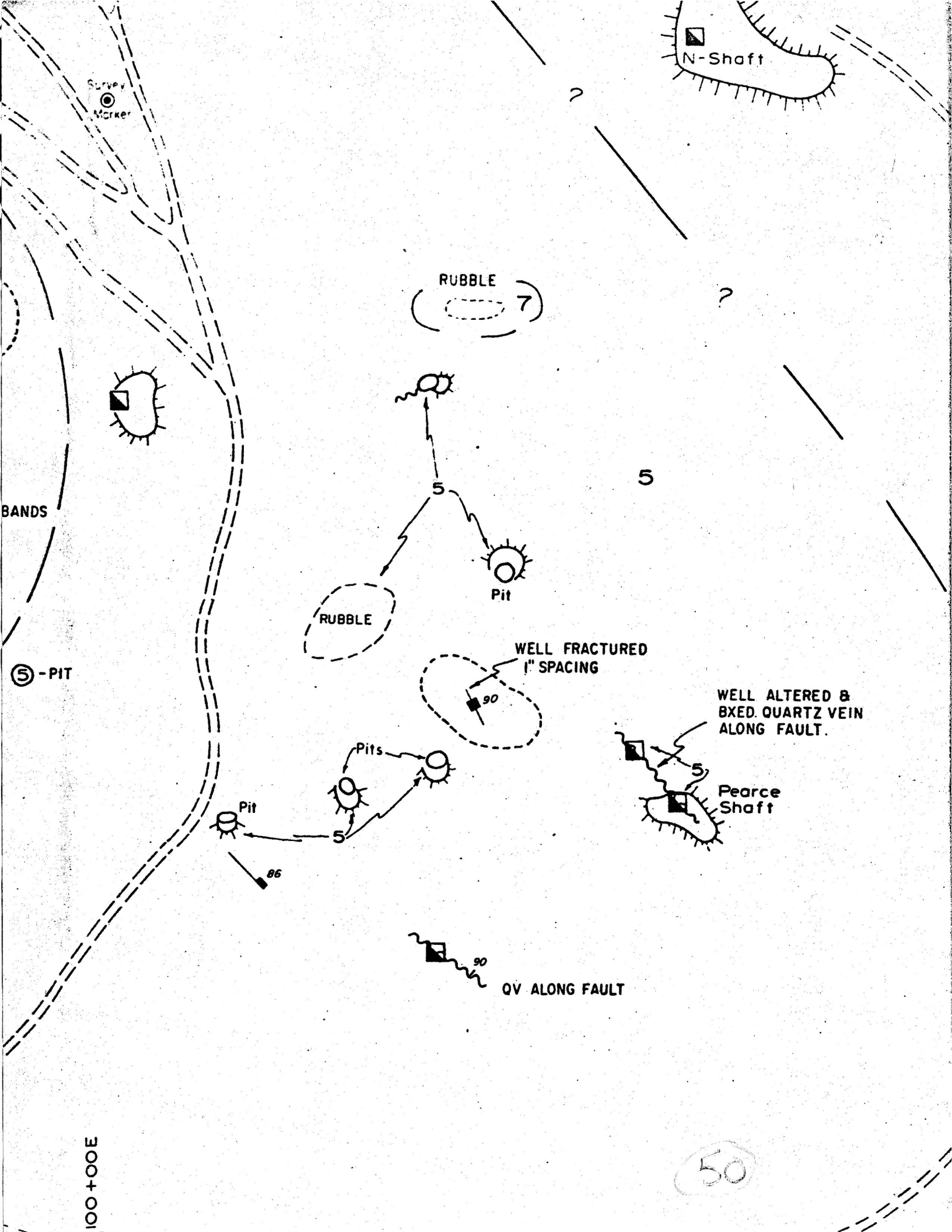
5 - PIT

100+00E

D

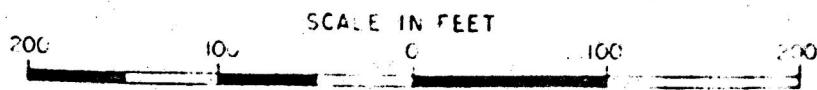
49

200



E

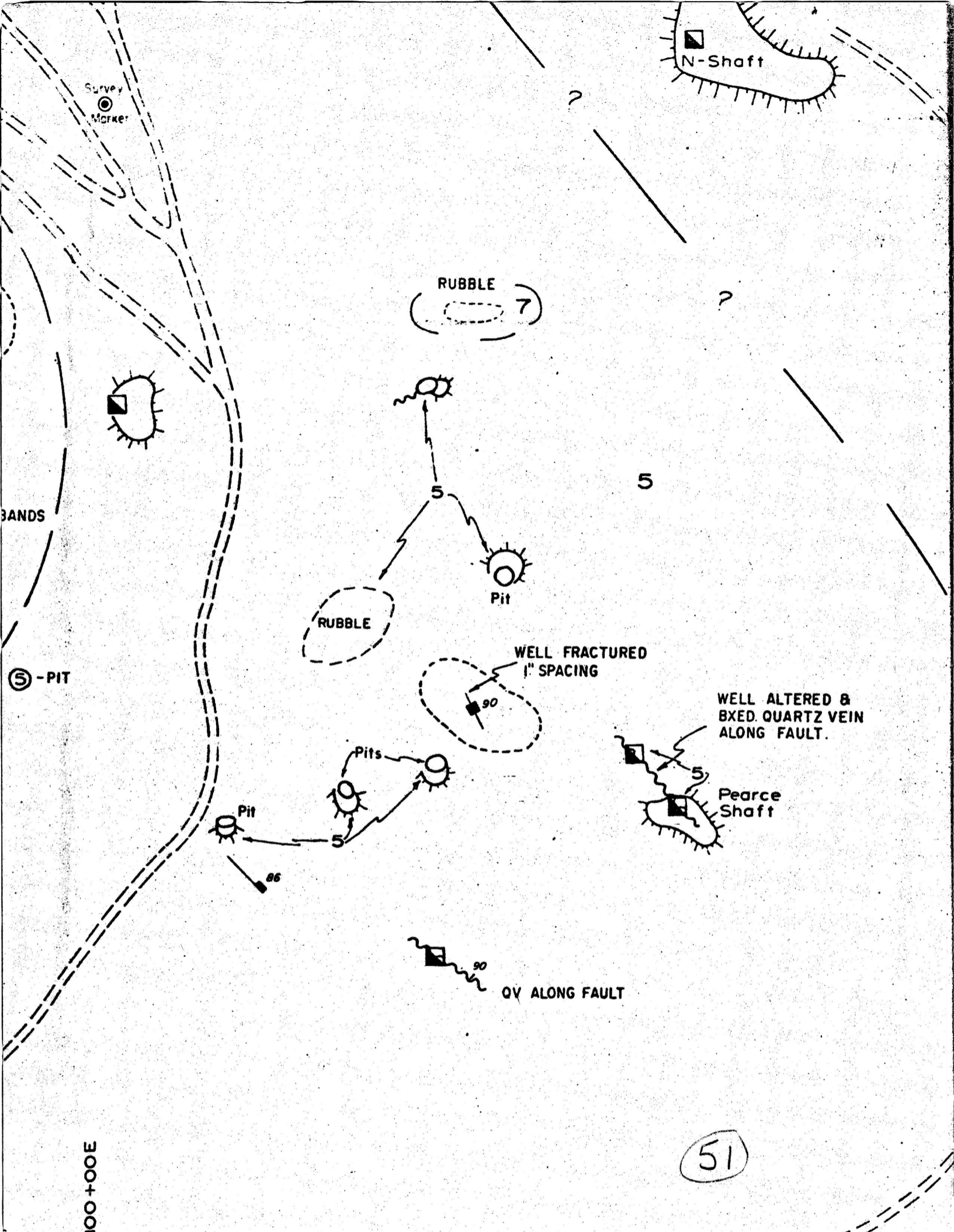
F



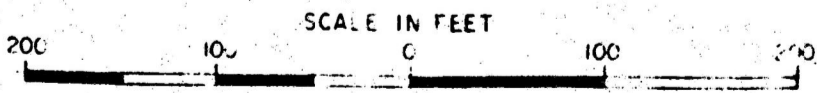
DATE REVISED

BY

DATE REVISED	BY



E



DATE REVISSED

BY

DATE REVISSED	BY

4400

4350

Legend

Tertiary

10 Post Volcanic Sediments

9 Equigranular Andesite

4300

4250

8 Quartz Vein

7 Porphyritic Dacite

4200

6 Upper Andesite

5 Middle Andesite

4150

4 Lower Andesite

3 Rhyolitic Tuff-Breccia

4100

2 Bottom Andesite

Cretaceous

1 Bisbee Group

4050

4000

Ag oz./Ton

0-0.99

1.00-1.99

2.00-2.99

+ 3.00

3950

**PRELIMINARY
COPY ONLY**
DATE: NOV 17 1976

3900

3850

97+50 N

53

TITLE — COMMONWEALTH PROJECT
GEOLOGICAL DRILL HOLE SECTION (

**ethlehem
opper**

CP-76-14

SECTION (113+6

CORPORATION
VANCOUVER

BRITISH COLUMBIA