

CONTACT INFORMATION  
Mining Records Curator  
Arizona Geological Survey  
416 W. Congress St., Suite 100  
Tucson, Arizona 85701  
520-770-3500  
<http://www.azgs.az.gov>  
[inquiries@azgs.az.gov](mailto:inquiries@azgs.az.gov)

The following file is part of the  
Richard Mieritz Mining Collection

### **ACCESS STATEMENT**

These digitized collections are accessible for purposes of education and research. We have indicated what we know about copyright and rights of privacy, publicity, or trademark. Due to the nature of archival collections, we are not always able to identify this information. We are eager to hear from any rights owners, so that we may obtain accurate information. Upon request, we will remove material from public view while we address a rights issue.

### **CONSTRAINTS STATEMENT**

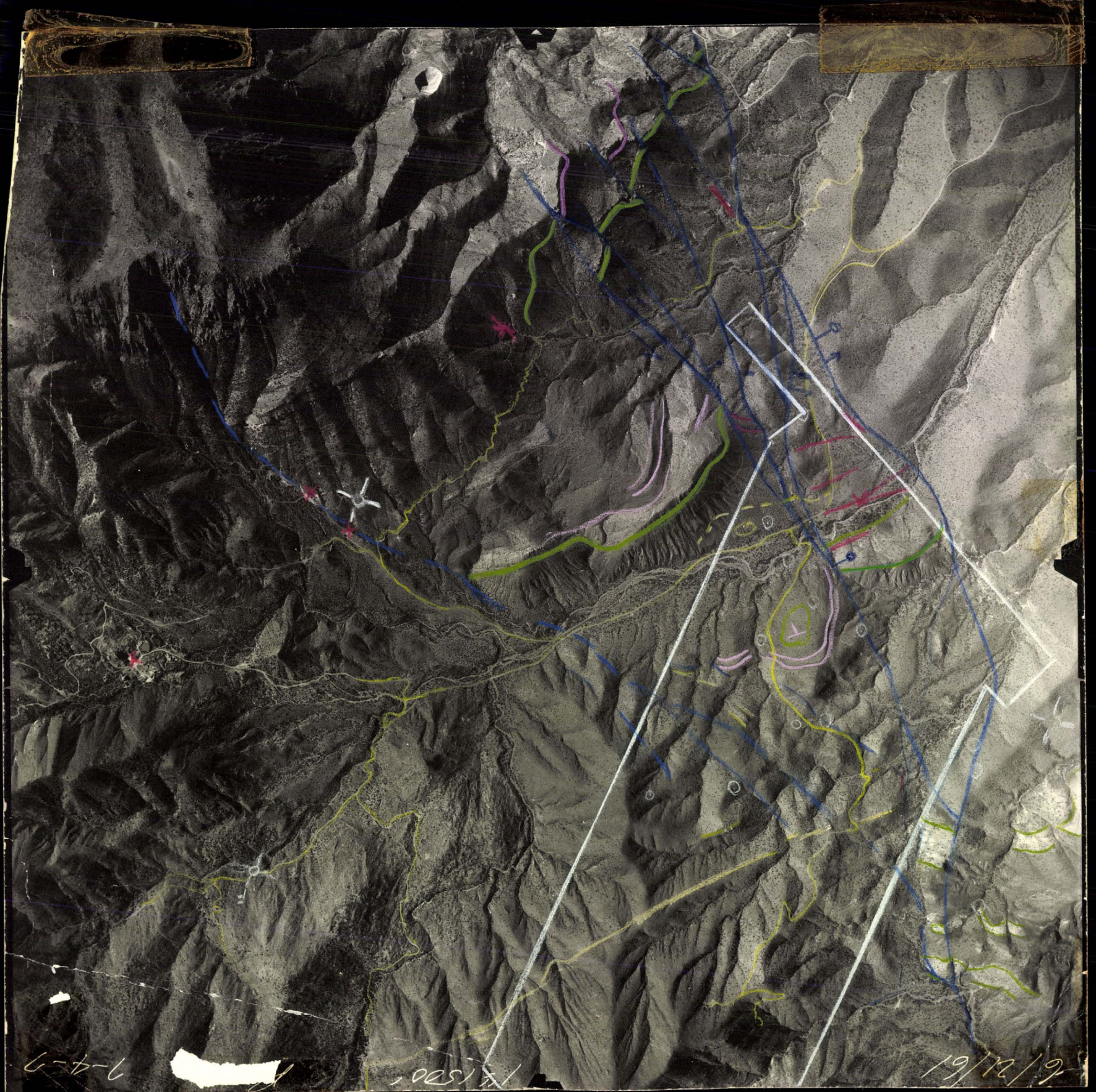
The Arizona Geological Survey does not claim to control all rights for all materials in its collection. These rights include, but are not limited to: copyright, privacy rights, and cultural protection rights. The User hereby assumes all responsibility for obtaining any rights to use the material in excess of "fair use."

The Survey makes no intellectual property claims to the products created by individual authors in the manuscript collections, except when the author deeded those rights to the Survey or when those authors were employed by the State of Arizona and created intellectual products as a function of their official duties. The Survey does maintain property rights to the physical and digital representations of the works.

### **QUALITY STATEMENT**

The Arizona Geological Survey is not responsible for the accuracy of the records, information, or opinions that may be contained in the files. The Survey collects, catalogs, and archives data on mineral properties regardless of its views of the veracity or accuracy of those data.





6-4-7

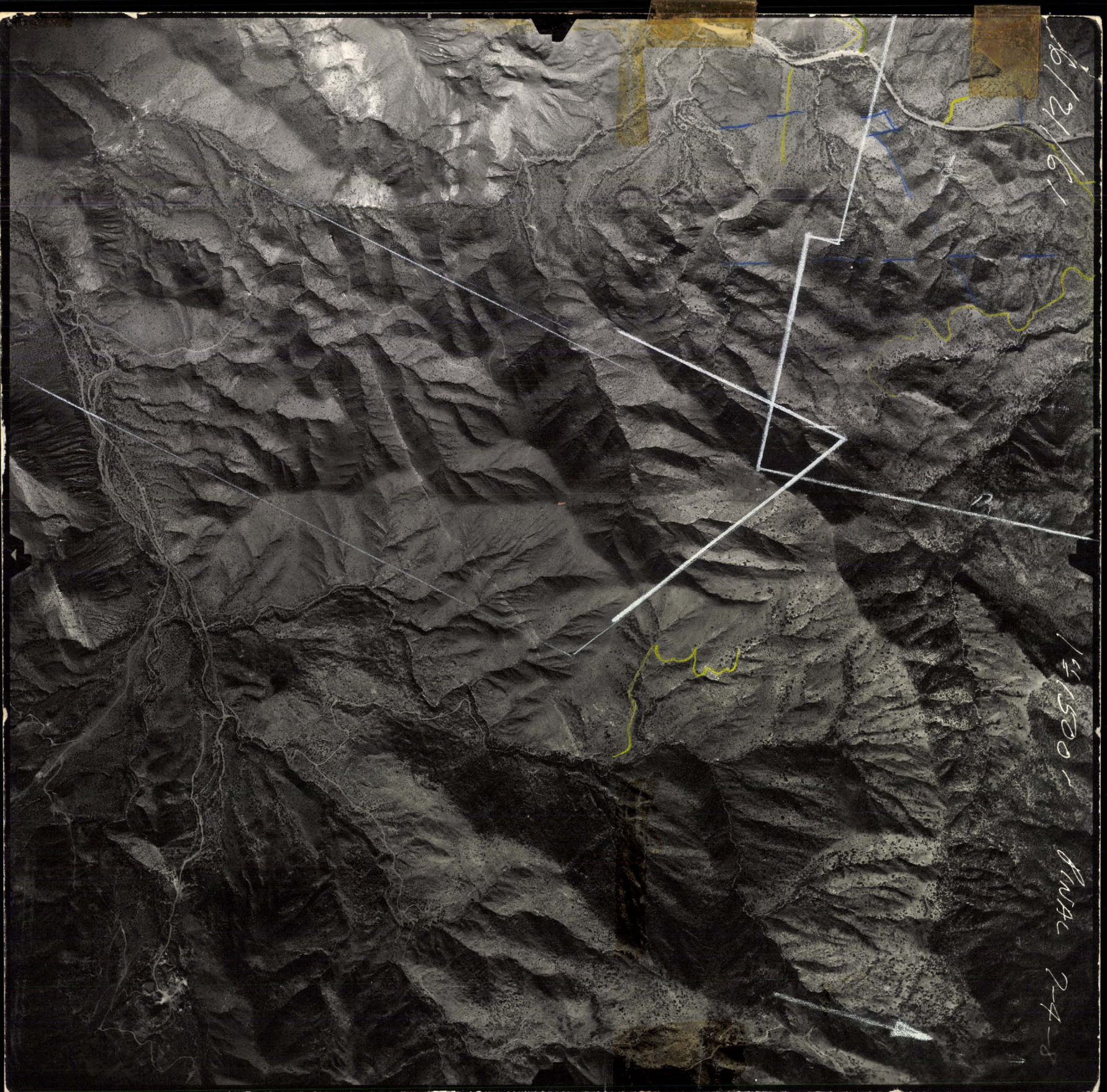
14500

6/21/61



6/21/61

141500 - RUMH 7-4-8

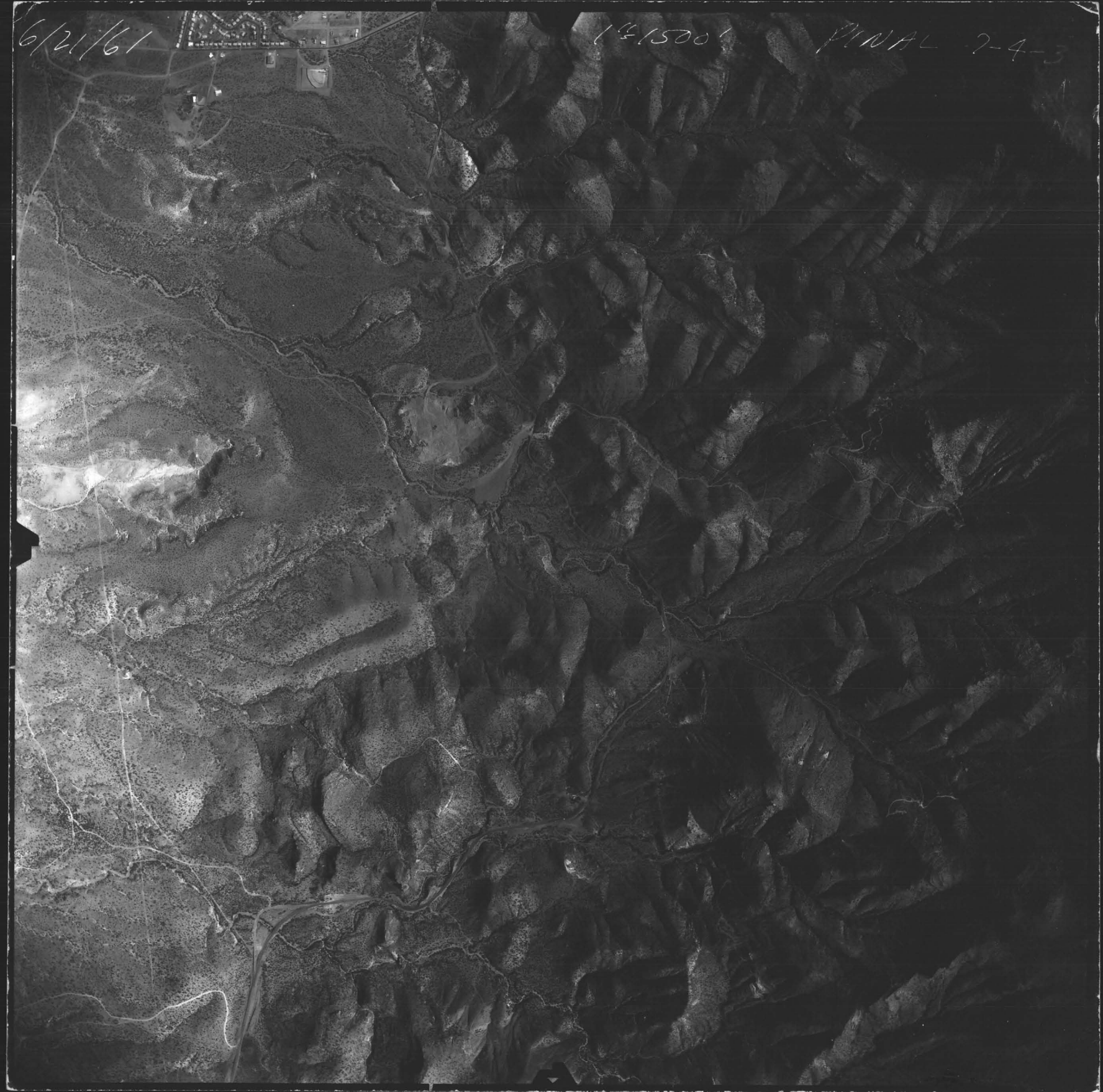




6/21/61

14-1500'

PINAL 2-4-3

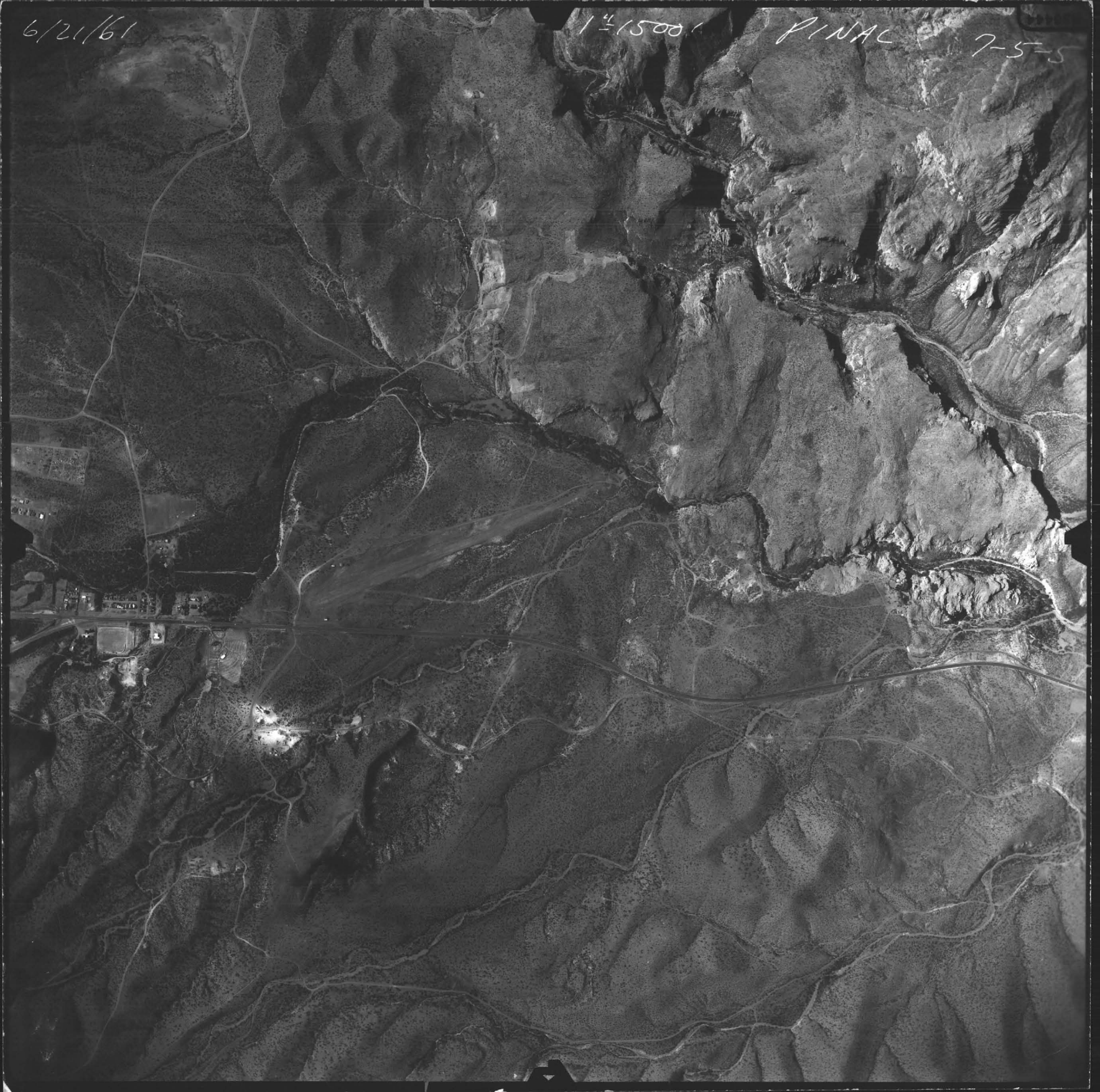


6/21/61

1:1500

PINAL

7-5-5

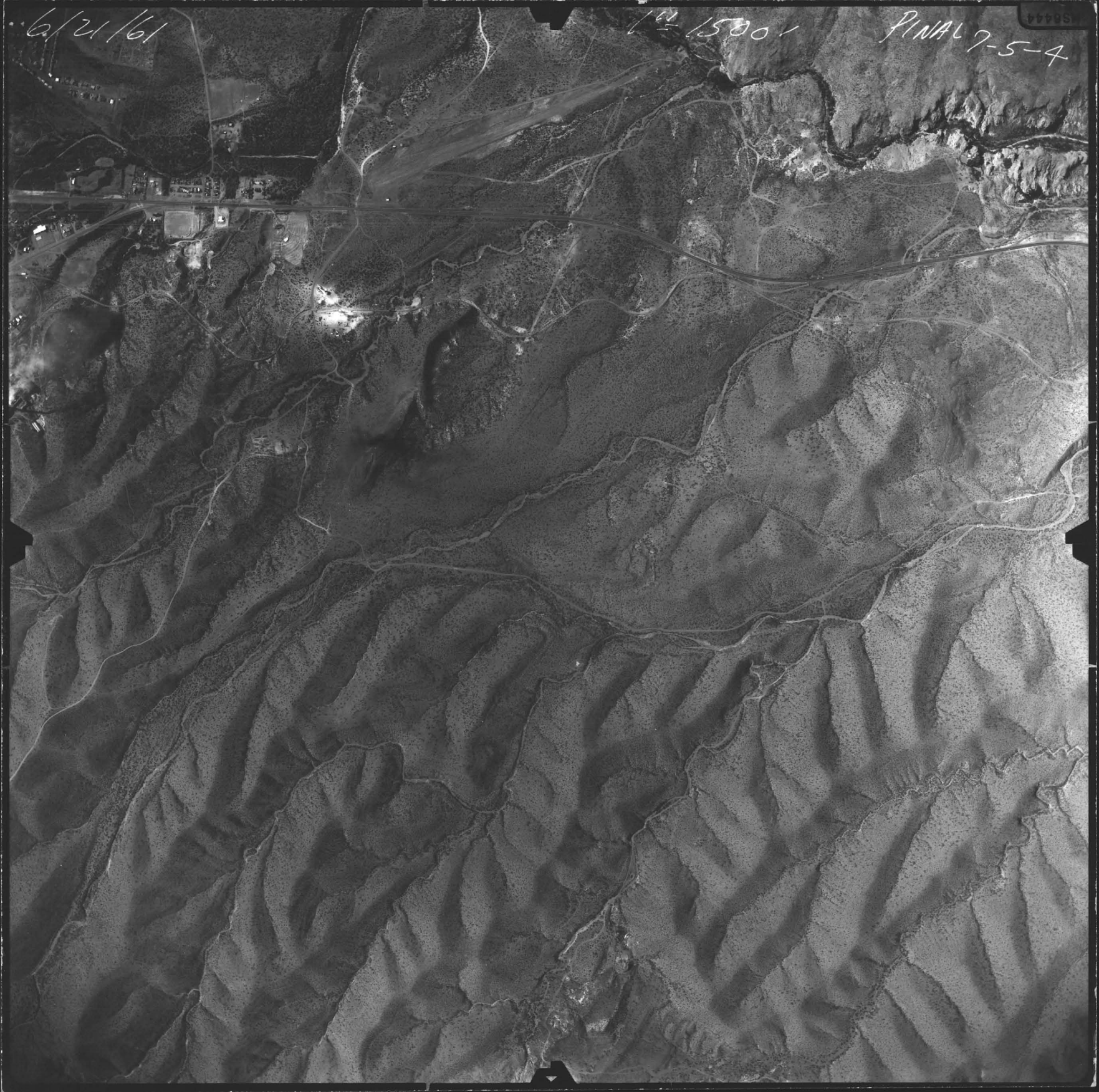




6/21/61

1500'

PINAL 7-5-4



6/21/61

1<sup>1/2</sup> 15001

PINAL

7-5-3



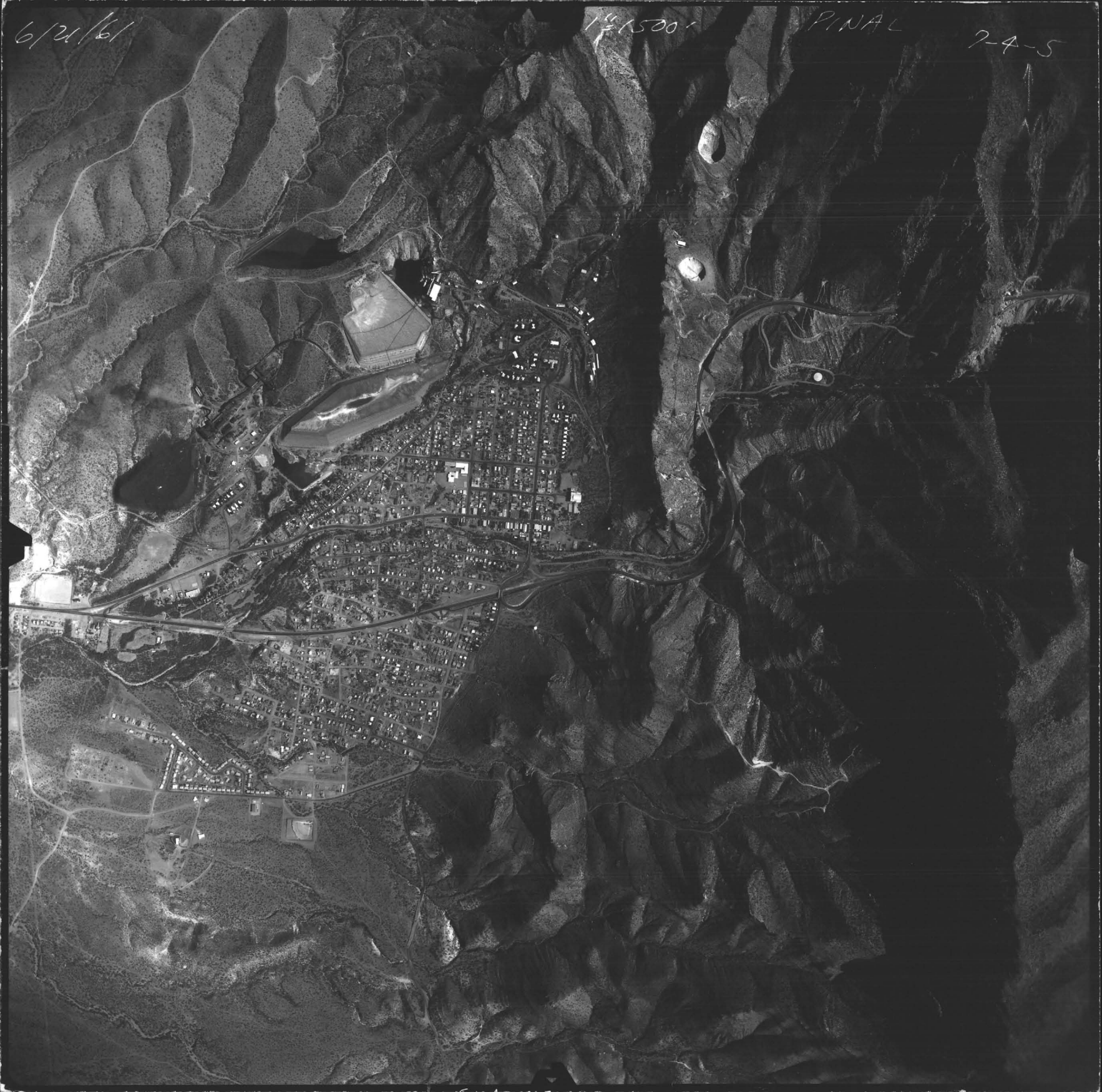


6/24/61

1 1/2 1500'

PINAL

7-4-5



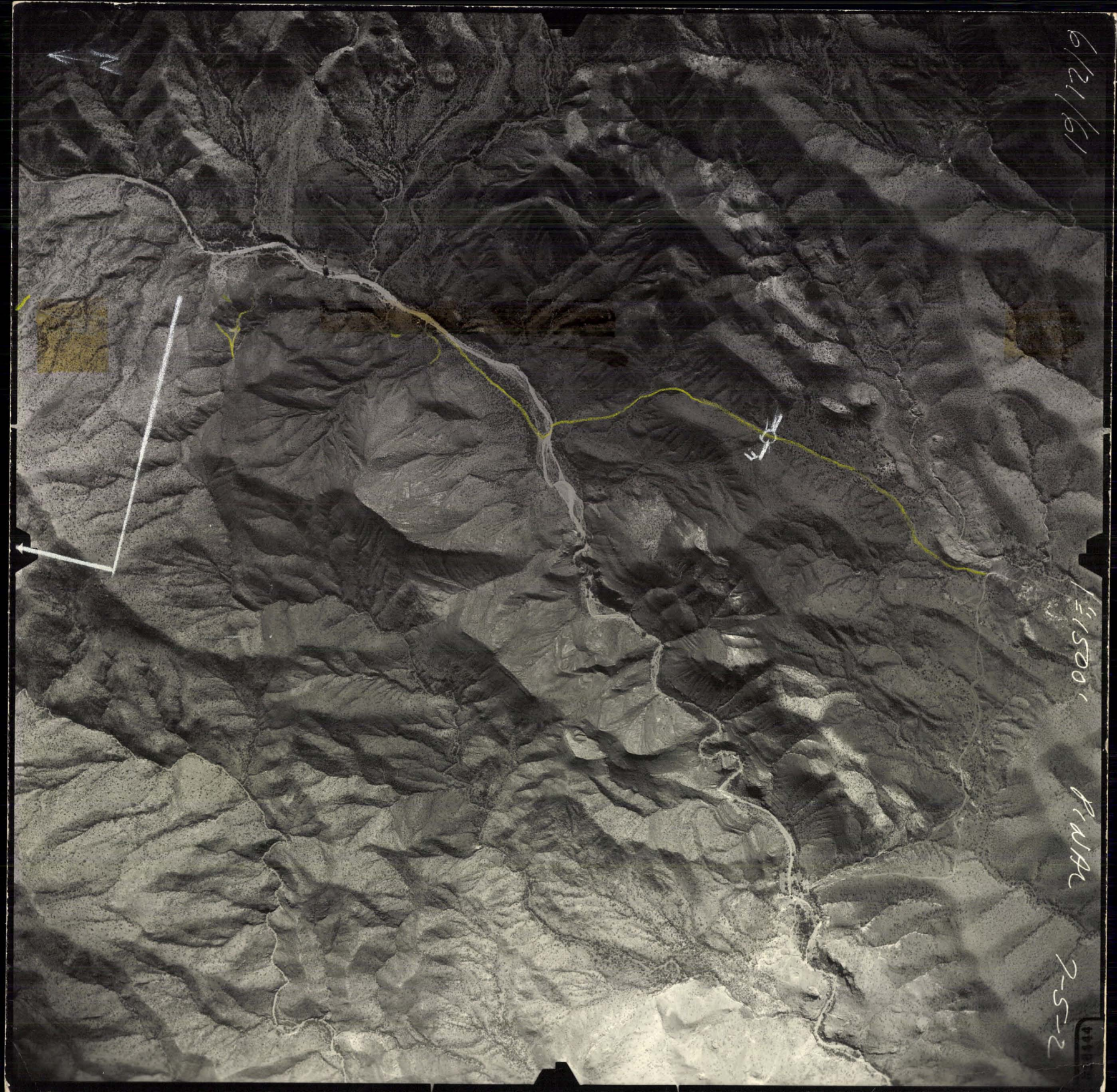


6/21/61

1500'

R1WA

7-5-2





6/21/61

14-1500 ✓

PINAL 7-5-4

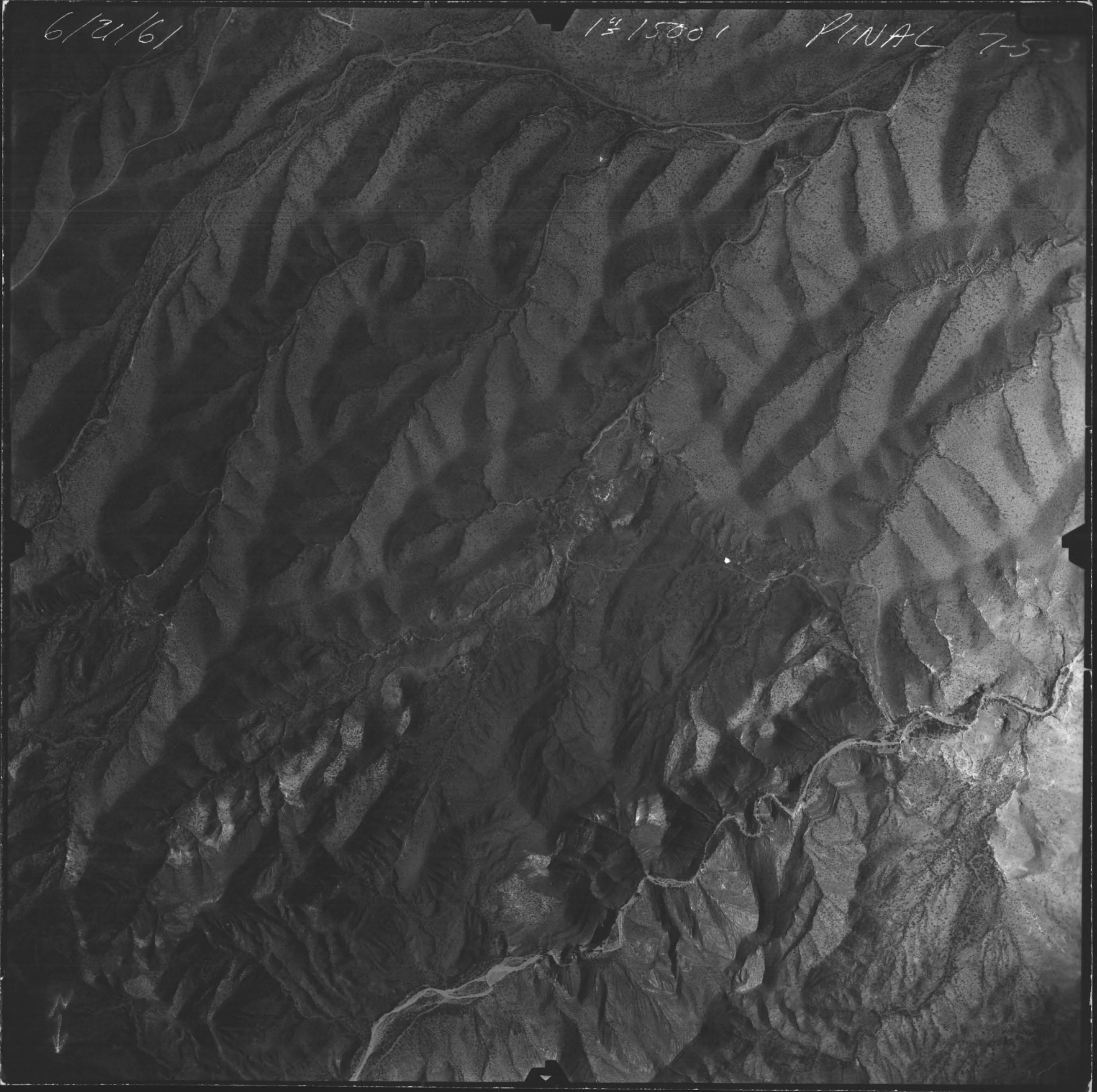




6/21/61

1<sup>1/2</sup> 15001

PINAL 7-5



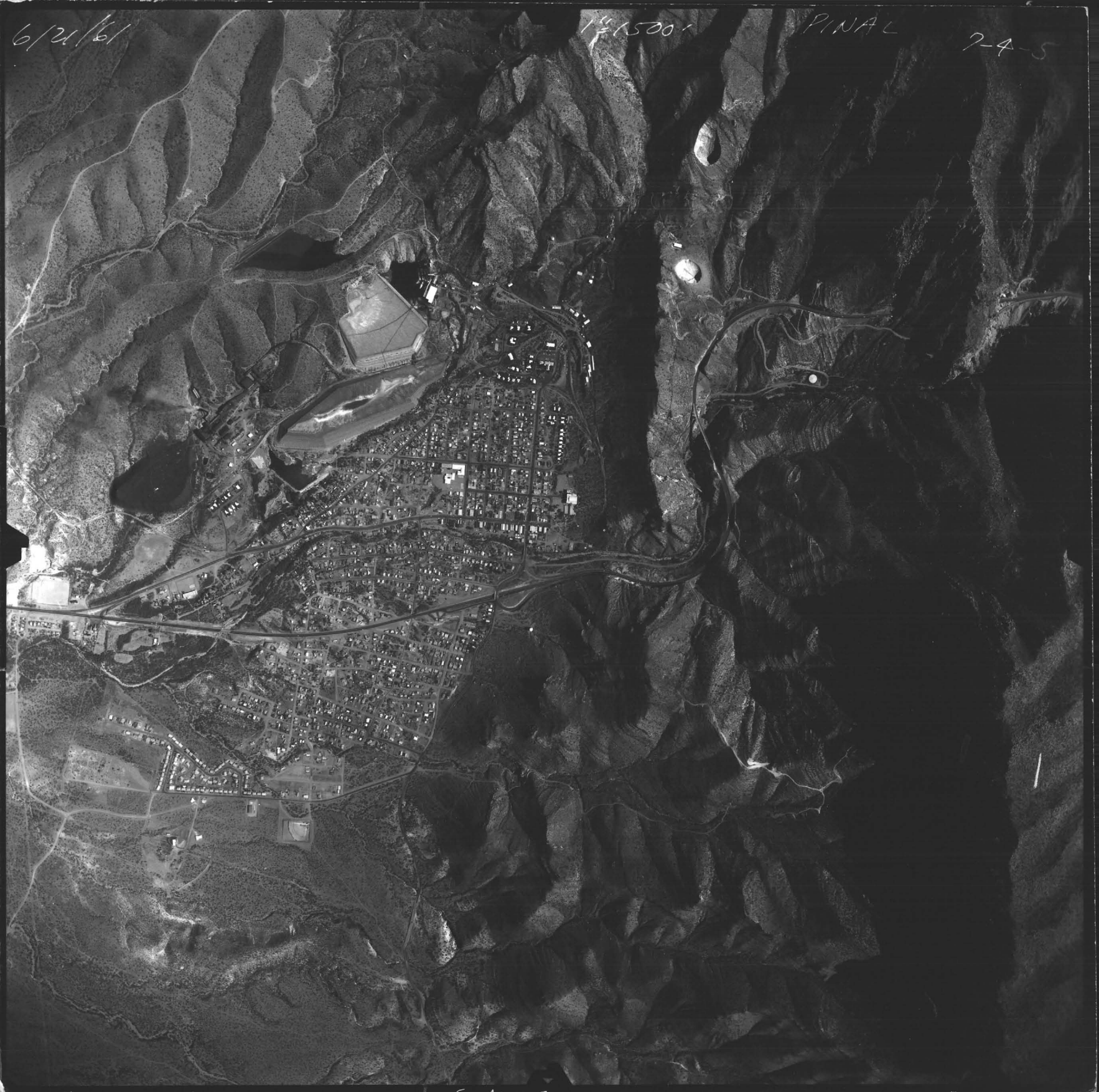


6/24/61

1:1500

PINAL

7-4-5





6/21/61

1515001

81NAL

7-4-6





6/21/61

1415001 PINAC 7-4-4

