



CONTACT INFORMATION
Mining Records Curator
Arizona Geological Survey
416 W. Congress St., Suite 100
Tucson, Arizona 85701
520-770-3500
<http://www.azgs.az.gov>
inquiries@azgs.az.gov

The following file is part of the
Richard Mieritz Mining Collection

ACCESS STATEMENT

These digitized collections are accessible for purposes of education and research. We have indicated what we know about copyright and rights of privacy, publicity, or trademark. Due to the nature of archival collections, we are not always able to identify this information. We are eager to hear from any rights owners, so that we may obtain accurate information. Upon request, we will remove material from public view while we address a rights issue.

CONSTRAINTS STATEMENT

The Arizona Geological Survey does not claim to control all rights for all materials in its collection. These rights include, but are not limited to: copyright, privacy rights, and cultural protection rights. The User hereby assumes all responsibility for obtaining any rights to use the material in excess of "fair use."

The Survey makes no intellectual property claims to the products created by individual authors in the manuscript collections, except when the author deeded those rights to the Survey or when those authors were employed by the State of Arizona and created intellectual products as a function of their official duties. The Survey does maintain property rights to the physical and digital representations of the works.

QUALITY STATEMENT

The Arizona Geological Survey is not responsible for the accuracy of the records, information, or opinions that may be contained in the files. The Survey collects, catalogs, and archives data on mineral properties regardless of its views of the veracity or accuracy of those data.

A REPORT

on the

SAMPLING

PROGRAM and PROCEEDURE

at the

DOROTHY "B" PLACER PROPERTY

Graham County, Arizona

by

Richard E. Mieritz
Mining Consultant
Sun City, Arizona

June 11, 1971

INTRODUCTION:

Mr. Frank Hallis, Scottsdale, Arizona, requested and authorized the writer to complete such work as necessary to check the gold-silver value merit of the Dorothy "B" placer claims located in Sections 16, 17, 20, 21, 22, 27, 28, 29 and 30 of T. 6 S., R. 28 E., G. & S. R. B. & M., twenty miles northeast of Safford, Graham County, Arizona.

As suggested by the writer, six representative, wide spaced samples were taken in an area designated by Mr. R. H. Vahrenkaap, Consulting Engineer, as containing precious metal values as so indicated in his report on the property dated January 6, 1930.

This report explains the sampling procedure used and the results obtained by the writer.

CONCLUSIONS:

Based on the results of the six samples and the writers knowledge of placer deposits in Arizona, the following conclusions are submitted for your consideration:

- (1) - The two most obvious, accessible and minable "benches" were tested by six samples. This area does not contain sufficient gold-silver values to be of economical importance, in fact, the samples show very negative results, and,
- (2) - You should have no further interest in the property.

GENERAL:

The Dorothy "B" placer claims cover an area bounded on the northeast side by Bonita Creek, by Spring Creek on the southwest and by the Gila River on the south and southeast.

Leasers of the claims (old work) had concentrated their efforts in 40 acres designated as the NE/4, NE/4 of Section 28 - part of the original Dorothy "B" placer location, Docket 104, page 503, Graham County Records office.

The writers efforts of the six samples were also concentrated in this area. (See included Map - SAMPLES LOCATIONS).

SURFACE EXPRESSIONS:

Recent and late past erosion has created three or four distinct terraces or benches northwesterly from the southwest flowing portion of the Gila River. The trend of these benches is northeasterly and create nearly horizontal mesas up to 1000 feet or more in width. The first bench rises some 50 to 75 feet above the present water level of the Gila River. The second bench is 35 to 50 feet vertically higher in elevation above the first bench.

GRAVEL CHARACTERISTICS:

The gravels of the two benches are very similar geologically, containing sand and boulders of the many igneous and sedimentary rocks of the area from which these gravels originated.

Roundness and smoothness of the pebbles and boulders indicate considerable travel. Boulder sizes range to 16 and 18 inch diameters. Sample measurements indicate that material greater than $\frac{1}{4}$ inch in size approximates 75% of the weight in a cubic yard and that a cubic yard of gravel will approximate 2850 to 2900 pounds, or almost 1.5 tons.

Samples also indicate that there is usually greater magnetite contents near the Gila River level than on the elevations above. In all cases however, the magnetite is extremely fine in size.

SAMPLE LOCATIONS:

Six samples were taken as shown on the included map. Their locations were surveyed by using a "range finder" for distance and brunton compass for directions as traverses from the silver painted 4" x 4" claim corner or discovery monument, as a reference point.

Choice of these sample locations were made by the writer as being representative of the "potential ground" and the most accessible ground operation-wise -- if it reached that point, and to test two of the benches horizontally and vertically. Sample locations were flagged using a 4 ft. lath and yellow engineers flagging tape. The sample number was marked on the lath. A description of each sample is:

First Bench (lowest above river level)

Sample 1107: A 2' x 4' x 1' sample ($\frac{1}{2}$ cubic yard) was taken from the east wall near the bottom of a 7 ft. deep dozer or backhoe trench and 5 ft. below the surface of the top of the first bench. Largest boulder was 6" x 6" x 10".

Sample 1108: A 3.5' x 1.5' x 2' sample, ($\frac{1}{2}$ cubic yard) was taken near the bottom from the east wall of a 230 foot long and 8 ft. deep, N-S trench and 6 feet below the surface. This location represents the lower portion of the first bench. Largest boulder in sample was 5" x 5" x 8".

Sample 1109: A 2' x 3' x 1.5' sample from an old pit on a small narrow mesa midway vertically up the first bench, was taken, thus testing the middle portion of the bench. Largest boulder was 6" x 8" x 11".

Second Bench

Sample 1110: A 4' x 2' x 1' sample near base of second bench north of the drilled water well. Largest boulder 4" x 6" x 10".

Sample 1111: A 4' x 2' x 1.1' sample, also near the base of the second bench approximately 8 feet above the top of first bench and southeast of the drilled water well. Largest boulder 6" x 8" x 14".

Sample 1112: A 3' x 2' x 1.3' sample of north wall, 5 feet below surface and near base of 7 foot deep E-W dozer trench on mesa representing the top of the second bench. Largest boulder 8" x 8" x 14".

SAMPLE TAKING and PREPARATION PROCEDURE:

The normal sampling procedure utilized a wooden box of 6.75 cubic feet (2.03' x 1.83' x 1.81') for volume measurement ($\frac{1}{4}$ cubic yard), a Jones type dry splitter, a $\frac{1}{4}$ inch screen, a 1/16 inch screen and a bathroom type scale for weight measurement to the nearest pound.

All samples were taken and prepared in the same manner. In some instances some steps were eliminated when sufficient, reliable, correlating statistical information had been obtained. The procedure followed, after selection of the location, was:

- (1) Mark out on the ground the area of material to be removed.
- (2) Shovel material into box, heaping to offset expansion of volume from "in place" to "disturbed".
- (3) Screen entire volume through or over $\frac{1}{4}$ inch screen (weigh boulders and pebbles and $-\frac{1}{4}$ inch size material. This provides correlation between fines and coarse material. Coarse material (boulders, pebbles, etc.) not weighed for samples 1109, 1110 and 1111.
- (4) Split fine material by $\frac{1}{4}$ using splitter and weighing resulting quarter as check on splitting accuracy.
- (5) Fines ($-\frac{1}{4}$ inch size) of samples 1107 and 1108 totally panned and a concentrate of magnetite and fine size silica (sand) grains obtained. Care being taken to observe for free gold and collected if necessary.
- (6) Fines of samples 1109, 1110, 1111 and 1112 were split in half and screened over 1/16 inch screen.
- (7) One half of the split fines was weighed as check on splitting accuracy.
- (8) Coarse material ($-\frac{1}{4}$, + 1/16 inch sizes) was panned and observed for free gold speck or nuggets. None were found nor was a concentrate obtained, not even of larger magnetite pieces.
- (9) Fine material ($-1/16$ inch size) was panned and a concentrate of fine sand grains and magnetite collected.
- (10) Panning was carried to completion as much as possible with little to no loss of magnetite.
- (11) Concentrates were sun dried and sent to Jacobs Assay Office to be weighed in grams and assayed for gold and silver content per ton. Samples 1107 and 1108 were also assayed for natural iron, in order to determine the approximate magnetite percentage in the panned concentrates.

The facts and figures relating to the samples and the assay results are shown in Table I.

Respectfully submitted,

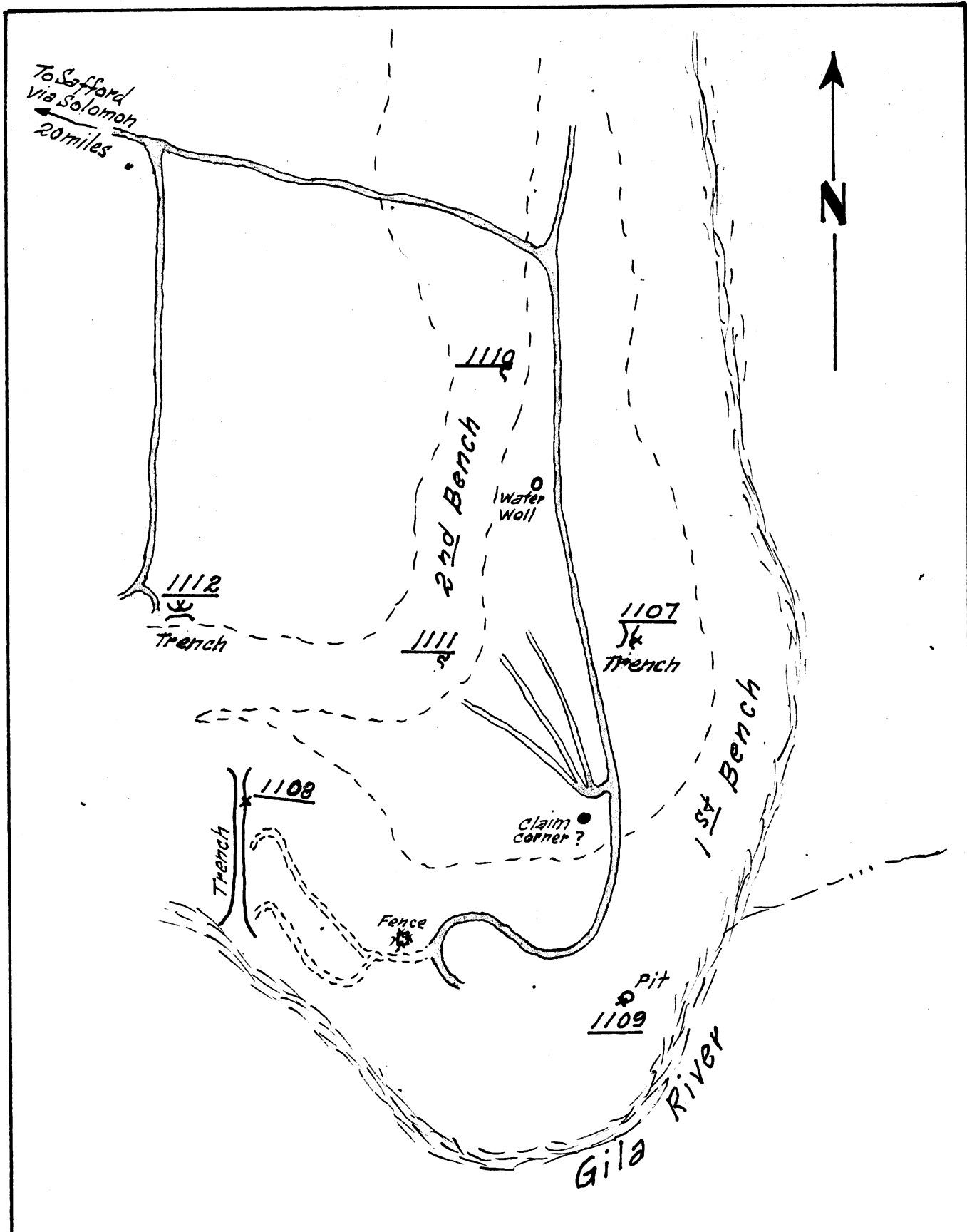
R. E. Mieritz,
Mining Consultant,
June 11, 1971

TABLE I
SAMPLE INFORMATION

	<u>Sample Numbers</u>					
	<u>1107</u>	<u>1108</u>	<u>1109</u>	<u>1110</u>	<u>1111</u>	<u>1112</u>
Measured weight, $\frac{1}{4}$ cu. yd.	724	792				704
Calc. weight, cubic yard	2896	3168				2816
Weight, $-\frac{1}{4}$ inch size, cu. yd.	2812	800	992	672	640	608
Weight, $-\frac{1}{4}$ inch, $\frac{1}{4}$ cu. yd.	203	200	248	168	160	152
No. of splits, $-\frac{1}{4}$ inch size	2	2	3	3	3	3
Weight $-\frac{1}{4}$ inch size, panning	51	50	31	21	20	19
Weight, panned conc., grams.	140	90	56	33	16	25
Weight, panned conc., pounds	0.308	0.198	0.123	0.073	0.035	0.055
Splitting Factor, above times	16	16	32	32	32	32
Weight, lbs conc./ cu. yd.	4.93	3.17	3.94	2.34	1.12	1.76
Natural Iron, Percent, assayed	28.35	38.40	N. A.	N. A.	N. A.	N. A.
Magnetite in Conc., percent	39.2	53.0				
Magnetite in Conc., pounds per cu. yd.	1.93	1.68	1.80 (Est.)			

SAMPLE RESULTS

Free gold in Concentrate	3 colors	None	None	None	None	None
Gold per ton, Conc. Assay	Tr.	0.005	0.16	Tr.	Tr.	Tr.
Silver per ton, Conc. Assay	0.05	0.05	0.15	Tr.	Tr.	Tr.
Yds req'd for 1 ton conc	965	1190	1111			
Value, gold per cu. yd.	\$0.00	0.00	0.011	0.00	0.00	0.00
Value, silver/ cu. yd.	\$0.00	0.00	0.0005	0.00	0.00	0.00
Total value/ cu. yd.	\$0.00	0.00	0.0115	0.00	0.00	0.00

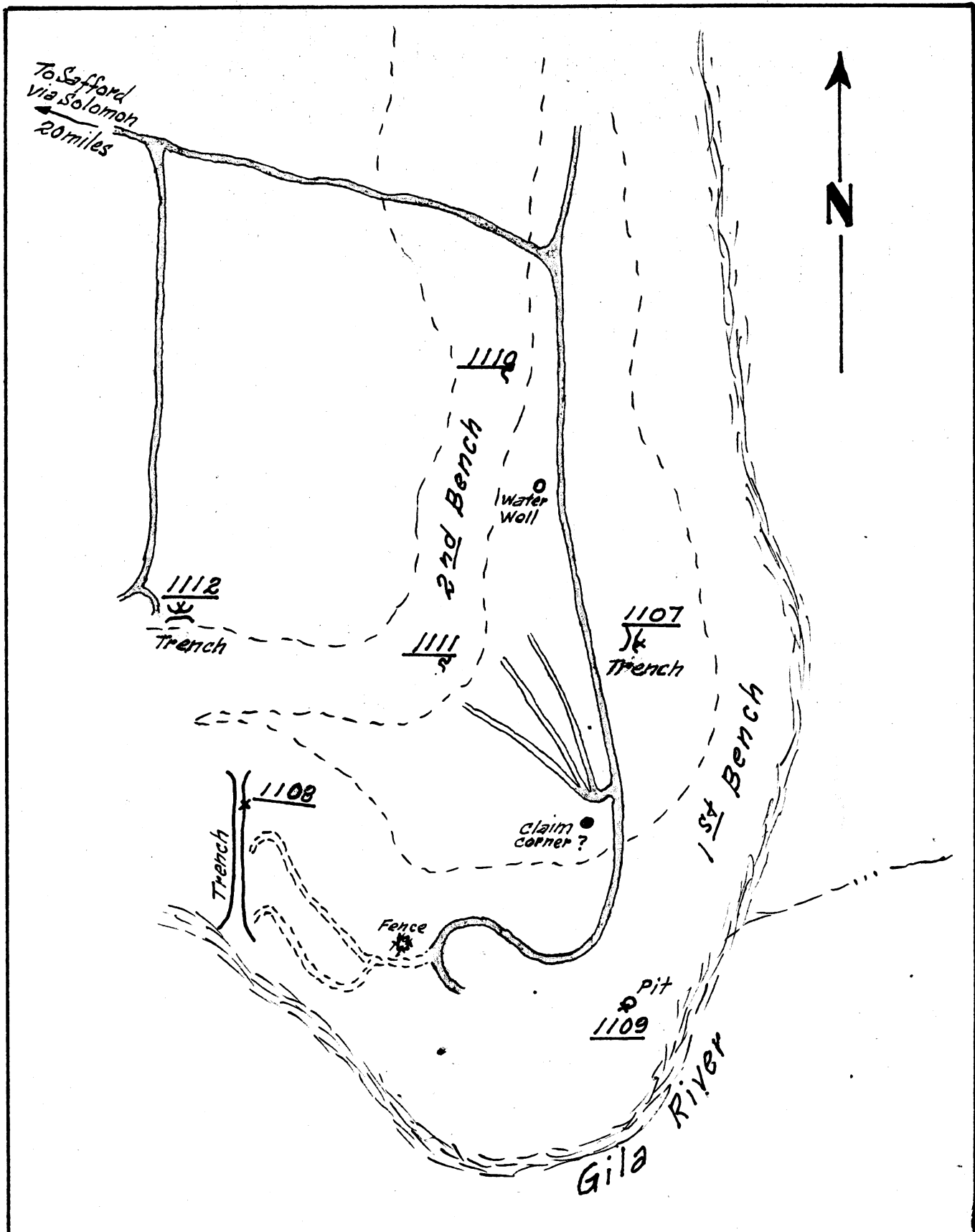


SAMPLE LOCATION MAP

Portion of
DOROTHY "B" PLACER CLAIMS
Graham County, Arizona

Scale: 1" = 400 Ft.

June 11, 1971 REM



SAMPLE LOCATION MAP

Portion of
DOROTHY "B" PLACER CLAIMS
Graham County, Arizona

Scale: 1" = 400 Ft.

June 11, 1971 REM

1435 S. 10th AVE.

P. O. BOX 1289

Jacobs Assay Office

PHONE 622-0810

Registered Assayers



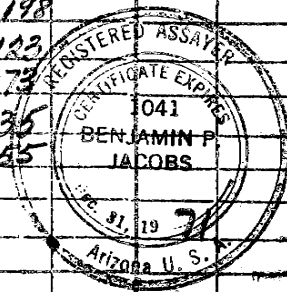
Certificate No. 58748

TUCSON, ARIZONA 85702

June 10th 1971

Sample Submitted by Mr. R E Meritz

SAMPLE MARKED	GOLD		SILVER		COPPER		LEAD	
	Ozs. per ton ore	Value per ton ore	Ozs. per ton ore	Per cent Wet Assay	Per cent Wet Assay	Per cent Wet Assay	Per cent Wet Assay	
<u>Fe</u>		\$						
						<u>WEIGHT</u>		
						<u>- GRAMS -</u>		
# 1107	<u>28.25</u>	Trace	0.05	.095		140	.305	
1108	<u>38.40</u>	0.005 ^{30.175}	0.05	.095		90	.198	
1109		0.16 ^{5.60}	0.15	.285		56	.123	
1110		Trace	Trace			33	.073	
1111		Trace	Trace			16	.035	
1112		Trace	Trace			25	.055	



* Gold Figured ^{1.50} \$35.00 per oz. Troy

Charges \$ 21.00

Very respectfully

Ben P. Jacobs

Received United Bank of Arizona Cashiers check
#11006 in the amount of \$100.00 (Seven hundred and
no/100 dollars) ————— from Mr. Frank Hallis,
Scottsdale, Ariz. as advance partial payment for
consulting work of sampling of the Dorothy B.
Plecker claims approximately 14 miles northeast of
Safford, Graham County, Arizona.

Richard E. Williams

Consulting Geologist
Phoenix - Tempe, Ariz.

May 27, 1971

#1107 - Dis. Pit - East side - 5' below surface - Hole 2x4x1.5 -

Mat-sand to boulders. 6"x6"x10" - Full box.

Screened $\frac{1}{32}$ " (-) = 30 #s panned - $\frac{1}{2}$ " conc - 3 explor.

~~Panned~~ mid May

split $\frac{1}{4}$
= 50.5

23.9%

100	}	20.3
75		
77		
80		
70		
82		
37		
28		
34		
51		
724	#	
2896		

#1108 - Long Trench - N-S. Sample 3.5x1.5x2. - 6' below Surf.

E side of trench. dip ~~10~~ 10° W boulders 5"x5"x8"

~~Used~~ 2615
~~Panned~~ August
May

$\frac{1}{4}$ = $\frac{78}{200}$
 $\frac{71}{51}$ } Fines
25.2%

80	}	gravel
81		
80		
87		
89		
70		
88		
17		
592		
200		
792		
3		
3168		

#1109 - old Pit - Box - fines - $\frac{1}{4}$ split = 62 lbs - very fine.

a good assortment all sizes boulders - pebbles.

~~Panned~~ split $\frac{1}{4}$ more (= $\frac{15.5}{18}$) = 15.5 lbs. = 30.0 #
use

#1110 - base of 2nd Terrace - much clay soil - $\frac{1}{4}$ split = 42 #s

boulders - 4x6x10 - very few intermediate size boulders.

~~Panned~~ some angular - sample Pit - 4' x 2' x 0.8' - ~~to~~
split $\frac{1}{4}$ more = ~~70.0 #s~~
 $\frac{1}{8}$ 20.00 - use

#1111 base of 2nd Terrace. - 2' x 4' x 1.1 deep - $\frac{1}{4}$ Split = 40 lbs.

clay-fine - fair dist. of boulders - largest = 6"x8"x14" -

mostly surface.

~~Panned~~ split $\frac{1}{4}$ more = ($\frac{10.0}{18}$) = 10.0 #
 $\frac{1}{8}$ = 20.0 #

#1112 Tr - Pit 1.3 x 3.0 x 2' - many large
 boulders - 1 @ 8 x 8 x 14 - 5' below surface.
 layers horizontal - N. bank of Tr.

86	}	1/4 Split = 38 lbs
56		
71		
75		
71		
100		
69		
75		
49		
552		
152		34
		152
		404
		2816

split ^{1/2} ~~1/4~~ = $(\frac{1}{2}) = 9.5\%$
 small amt
 mag. $\frac{1}{8} = 19\%$

Sampling & Examination Charges (Approximate)

Sampling - Phase I

2 days field - 2 1st 2 days @ \$150 = \$450		
1 day office } 2 2 days @ \$125	\$12.50	
		<u>762.50</u>
1 helper - 2 days. \$35.00/day.	\$105.00	105.00
Hotel & Meal Expenses, 2 men		
\$40.00/day - 2 days	\$120.00	120.00
Sample assaying charges.	\$50.00	50.00
Auto use ± 600 miles @ 12¢/mi	72.00	72.00
		<u>1,009.50</u>

Examination (If results of Phase I indicate acceptable values)

2 days Field Time @ \$125.00/day	}	\$600.00
2 days office Time @ \$125.00/day		
Hotel & Meal Expenses	\$	30.00
Auto Expenses. ± 500 mi @ \$12¢/mi.	\$	60.00
		<u>\$1899.50</u>

Completion of above 2 Phases would include preparation of an evaluation Report of the property and projected plans and recommendations for an exploration program.

W. M. Murray 2/22/71

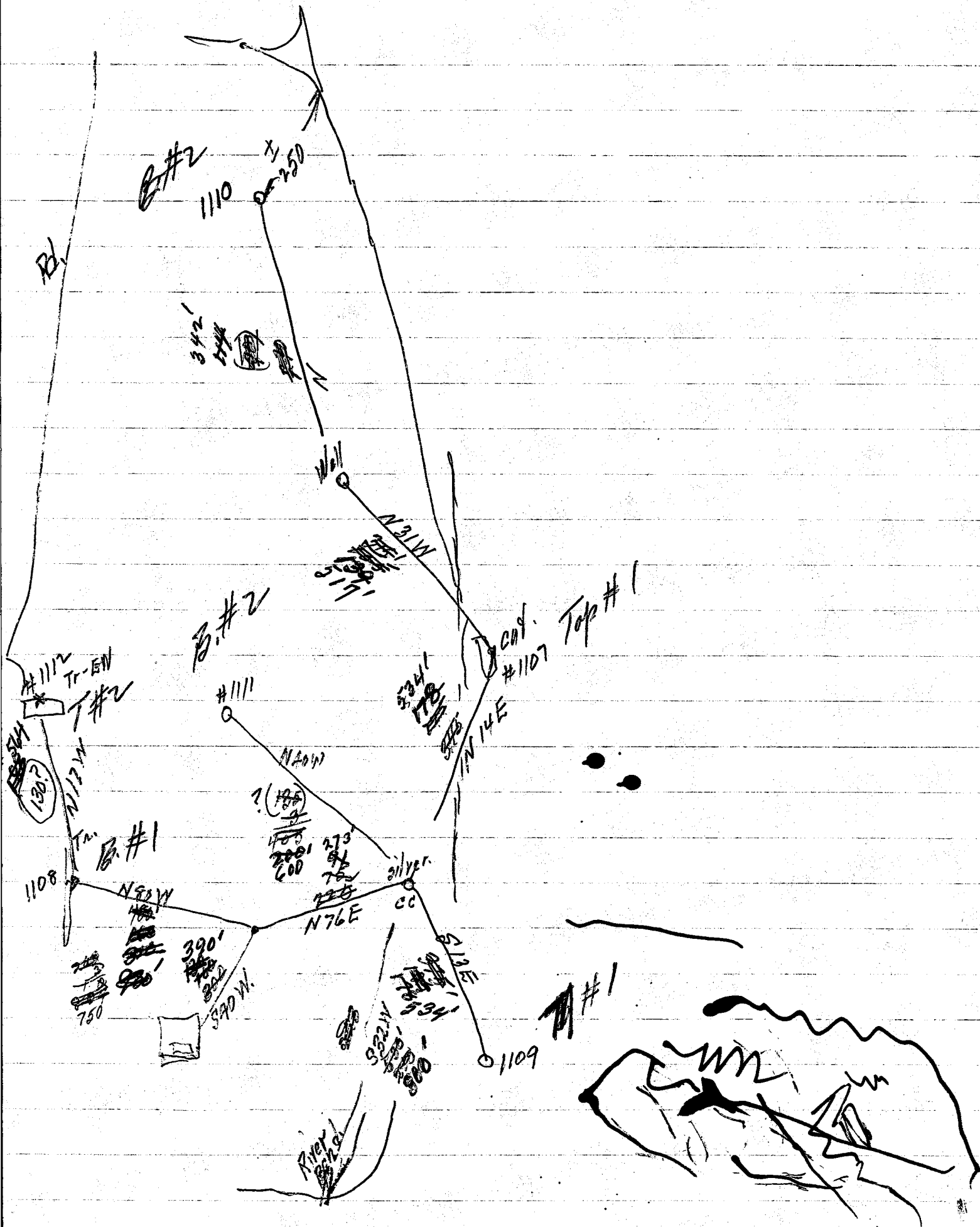
Sample No.	on yd. weight	weight of conc. (Panned)	Pounds conc. on yd.	% Fe	% Magnetite	lbs Mag. per cu yd.	Free gold	oz gold/ton (conc Assay)	oz silver/ton (conc Assay)	oz Au to oz Ag
1107 724	2896	812 ²⁰³ 51.808 x 16	4.93	28.35	39.2 (50.3)	$\frac{193}{2.72}$	3 colors	Tr.	0.05	965
1108 792	3168	800 ²⁰⁰ 50.198 x 16	3.17	38.40	53.0 (45.6)	$\frac{1.68}{2.18}$	NONE	0.005	0.05	1190
1109	N.M.	992 ²⁴⁸ 91.123 x 32	3.94	NA		1.8 wt.	NONE	0.16	0.15	1177
1110	N.M.	672 ¹⁶⁸ 21.073 x 32	2.34	NA			NONE	Tr.	Tr	
1111	N.M.	640 ¹⁶⁰ 20.035 x 32	1.12	NA			NONE	Tr	Tr	
1112 704	2814	608 ¹⁵² 19.055 x 32	1.76	NA			NONE	Tr	Tr	

	gold value per yd	silver value per yd	Total value per yd
1107	0.0	0.0	0.0
1108	0.0	0.0	0.0
1109	\$ 0.011	0.0005	0.0115
1110	0.0	0.0	0.0
1111	0.0	0.0	0.0
1112	0.0	0.0	0.0

85
54
31

9
6
54

Sample Information '18



B.#2
1110

342'
344'

250

N 31 W

B.#2

Top #1

#1112 Tr-EN

#1111

334'

#1107

130.7

273
274
275
276
277
278
279
280
281
282
283
284
285
286
287
288
289
290

silver

1108

N 9 W

N 76 E

cc

390'

1109

#1

River



534 miles @ 12¢ = 65.08

~~Friday~~
 April 18 - 1 day
 June 2 - 1 "
 3 - 1 "
 4 - 1 "
 5 - 1 "
 7 - 1/2 day
 10 - 1/2 day

450.-	450
125.-	} 250
125.-	
42.50	} 125.-
42.50	
887.50	
<u>825</u>	

~~887.00~~
 211.39
~~1078.39~~

Helper
 Auto
 Exp.
 Assays

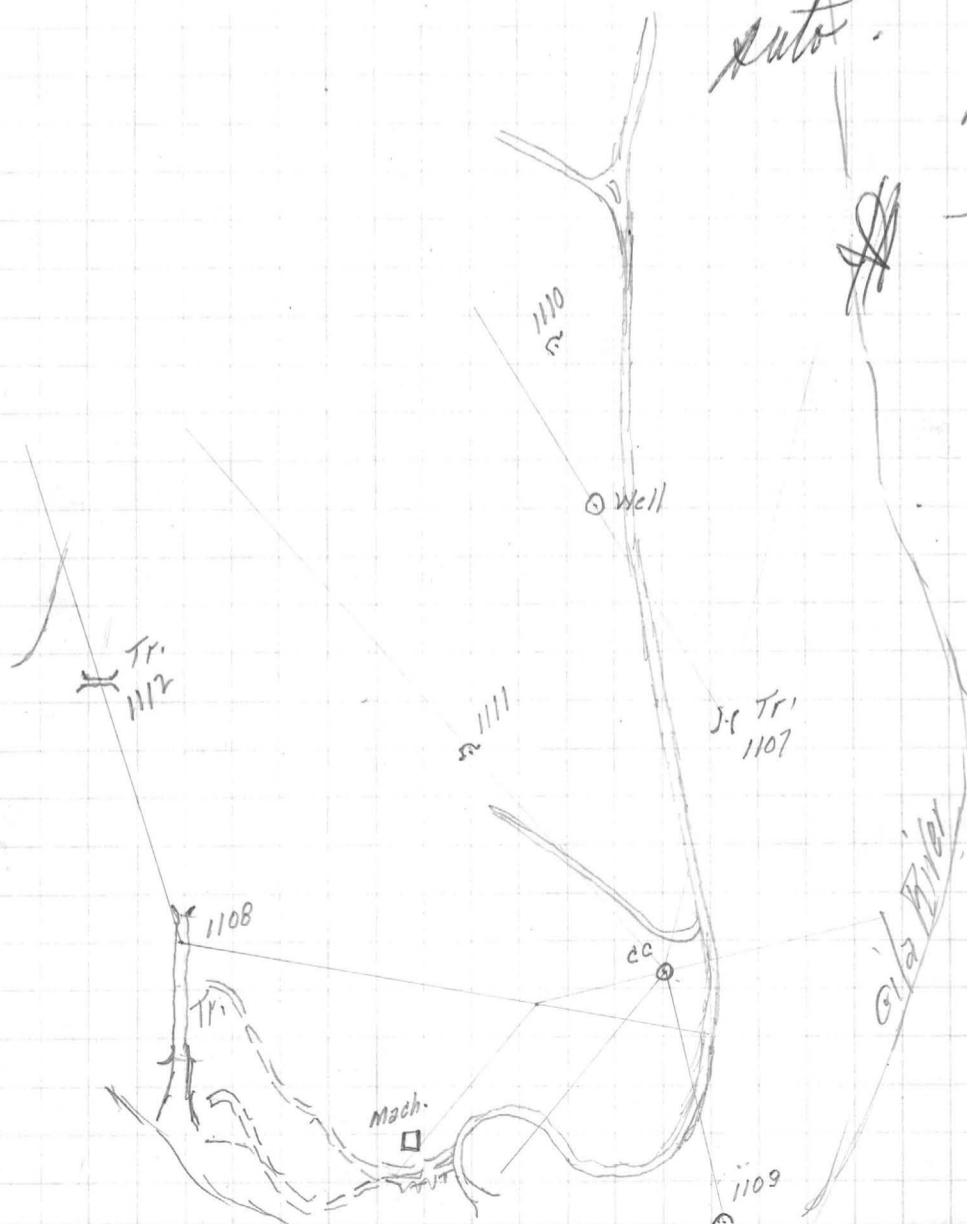
~~205.00~~
~~45.08~~
~~80.37~~
1138.95

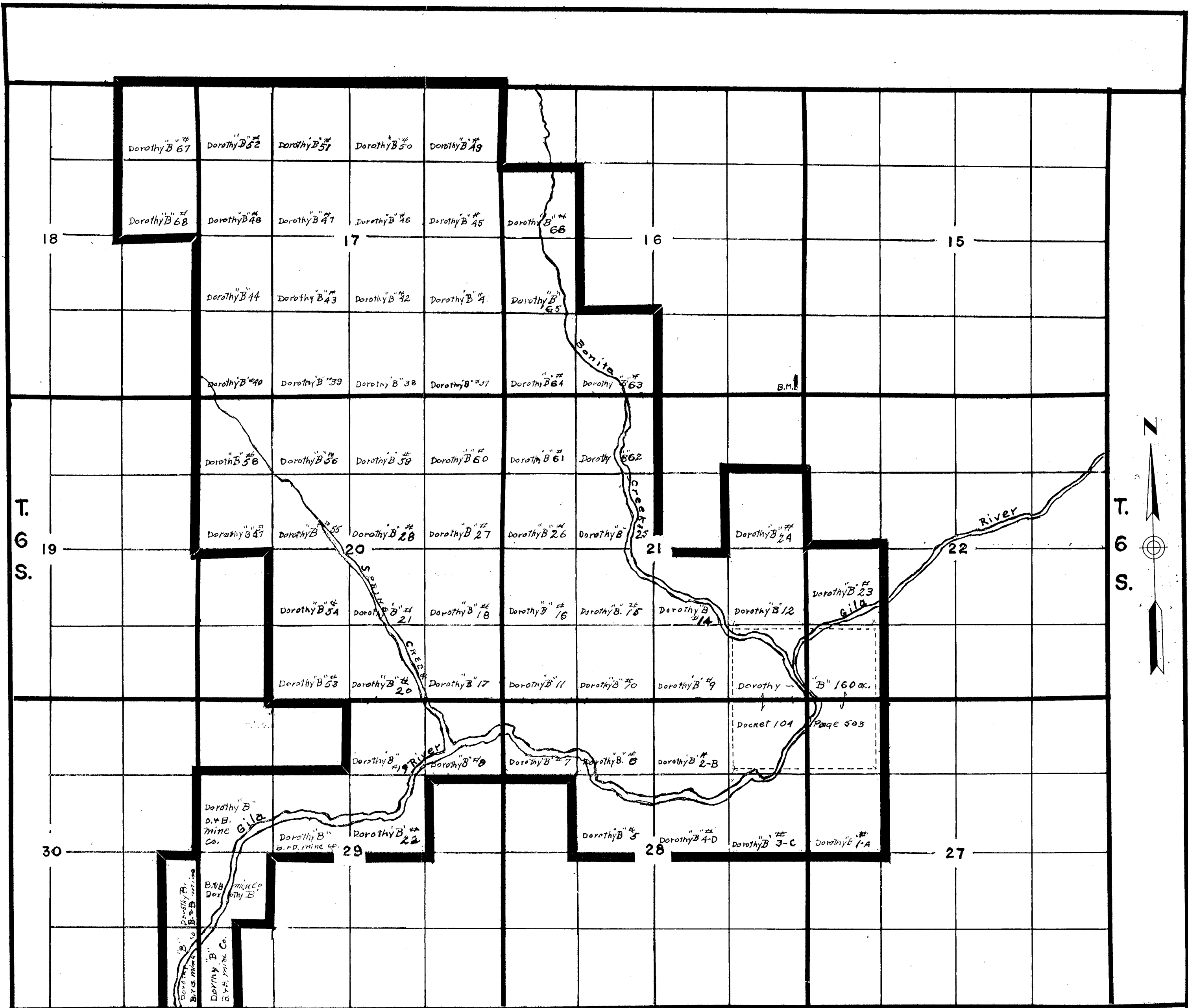
450
 375
825

~~825~~
~~211.39~~
~~1036.39~~
~~700~~
~~336.39~~

1036.39 ✓
 65.08 ✓
1101.47
 700.
401.47

Auto. ✓
 Feb. Exp. ✓





R. 28 E.

Scale 4 inches = 1 mile

DOROTHY "B" PLACER CLAIMS
GRAHAM COUNTY, ARIZONA